



SANTA MONICA-MALIBU UNIFIED SCHOOL DISTRICT

# Roosevelt Elementary School

Sept. 25, 2024



# Overview/agenda

- Carey Upton, Chief Operations Officer, Intro
- Dr. Amy Onyendu, Principal, Discuss the Why Factor
- Campus Master Plan
- Historical Resources
- CEQA Compliance
- Questions



SANTA MONICA-MALIBU UNIFIED SCHOOL DISTRICT

# Roosevelt Elementary School Master Plan

**CEQA Draft EIR Presentation**

**September 25, 2024**

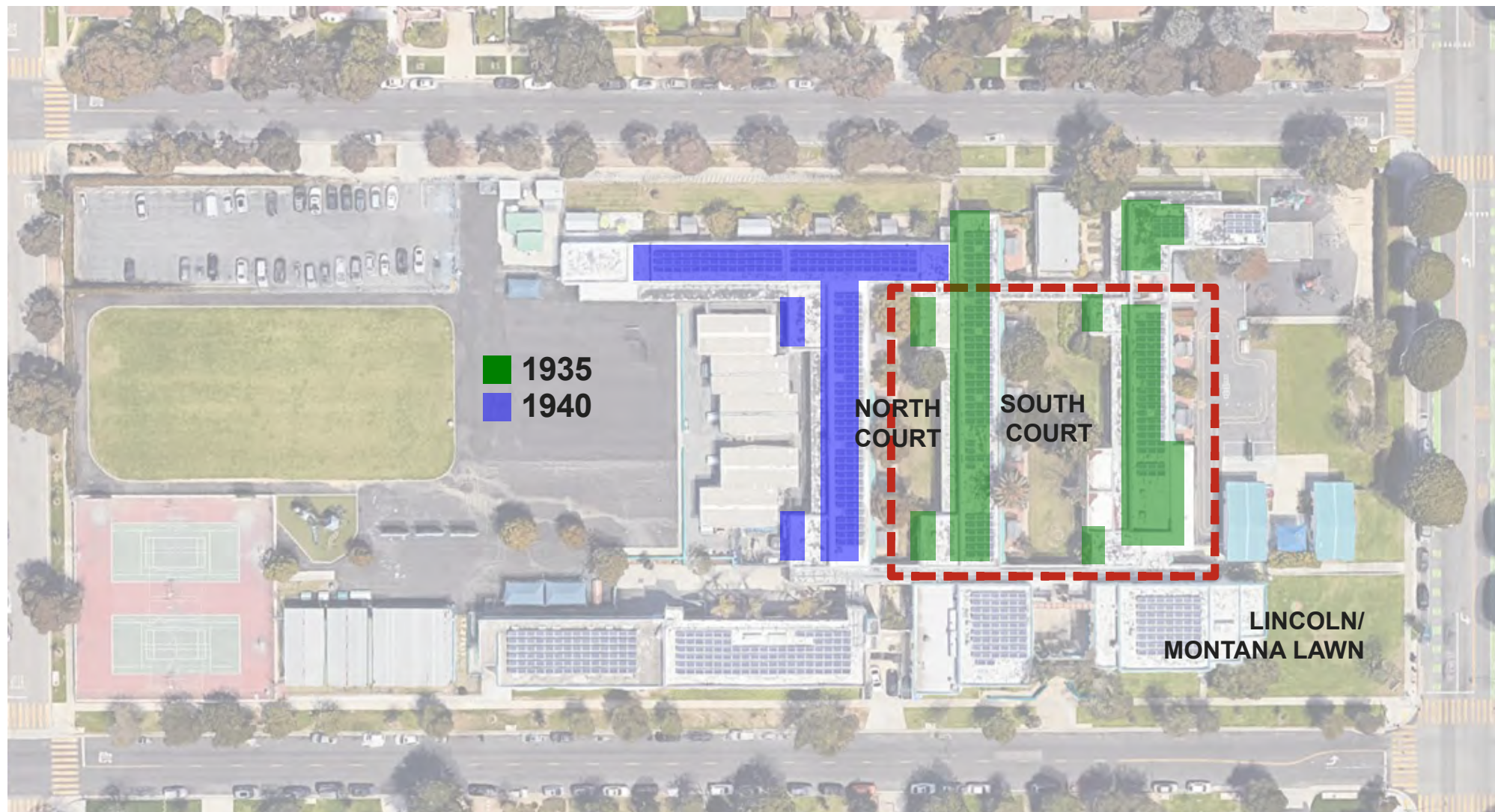


# Existing Condition



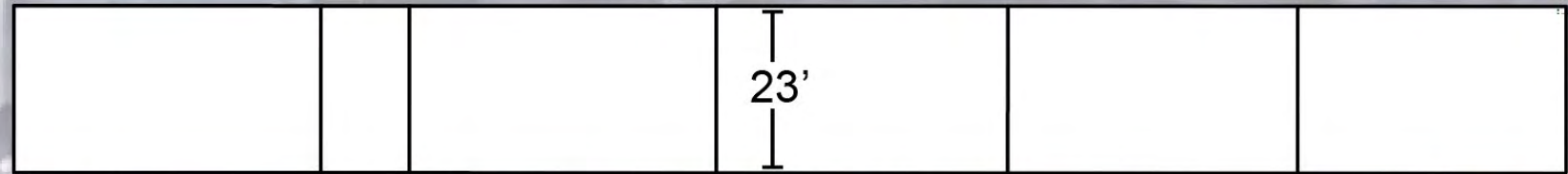


# Historic District





**TYPICAL EXISTING CLASSROOM SIZE: 890 SF**



23'

42'

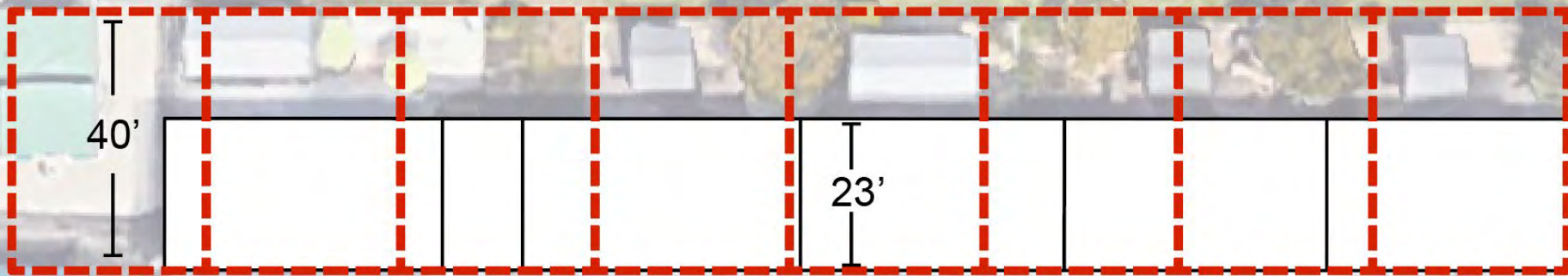
EXISTING  
CLASSROOM  
AREA: 890 SF

**ROOSEVELT ELEMENTARY SCHOOL  
MASTER PLAN**

**ADAPTIVE REUSE STUDY**



# ED SPECS CLASSROOM SIZE: 1,200 SF



30'  
40'  
PROPOSED  
CLASSROOM  
AREA: 1,200 SF

23'  
42'  
EXISTING  
CLASSROOM  
AREA: 890 SF

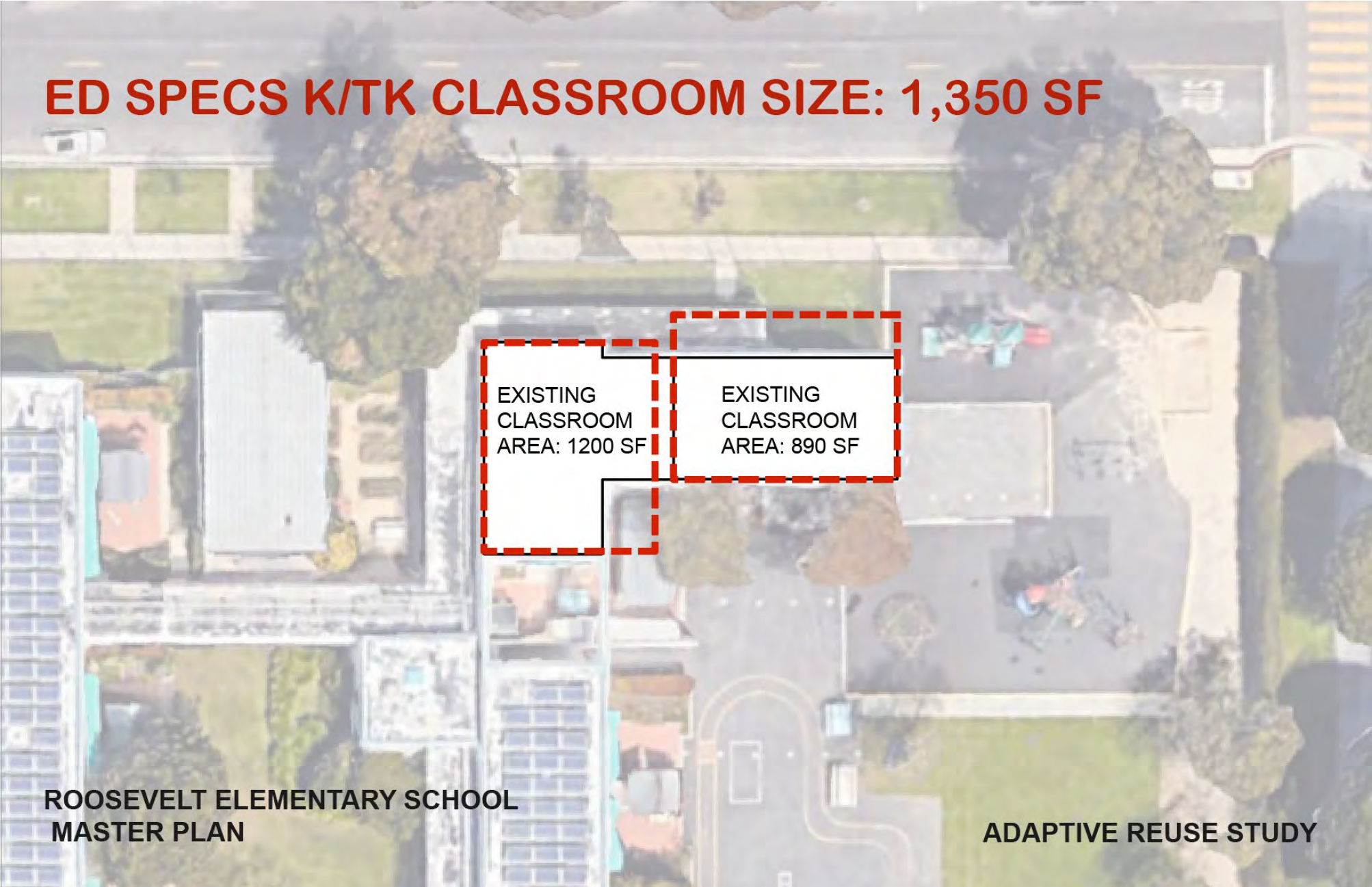
ROOSEVELT ELEMENTARY SCHOOL  
MASTER PLAN

ADAPTIVE REUSE STUDY





## ED SPECS K/TK CLASSROOM SIZE: 1,350 SF



EXISTING  
CLASSROOM  
AREA: 1200 SF

EXISTING  
CLASSROOM  
AREA: 890 SF

**ROOSEVELT ELEMENTARY SCHOOL  
MASTER PLAN**

**ADAPTIVE REUSE STUDY**







# Front Entrance, 1936





# Front Entrance, 2022





# Front Entrance, proposed





# Front Entrance, proposed





# Rendered Aerial View, 1935





# Aerial View, 2022





# Aerial View, proposed





# South Court, 1936









# South Court, proposed

















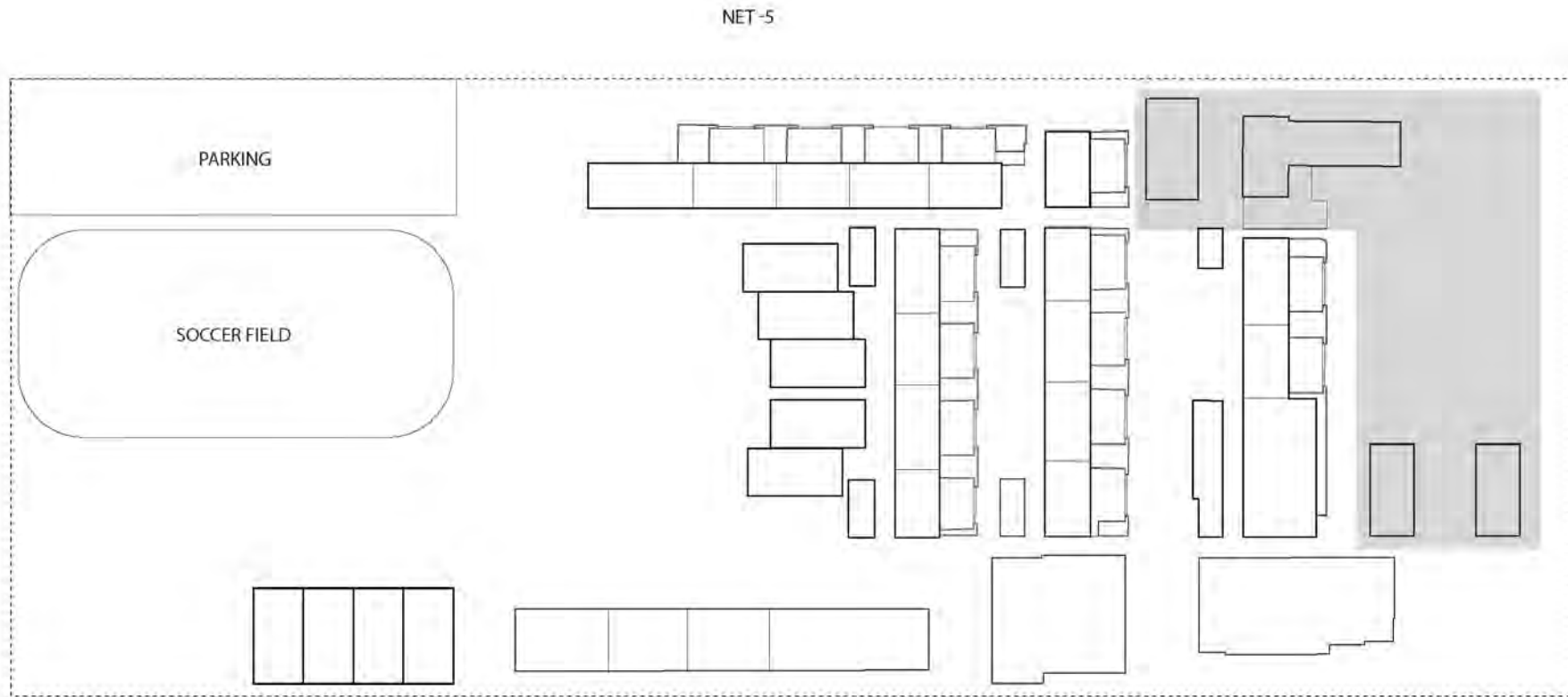








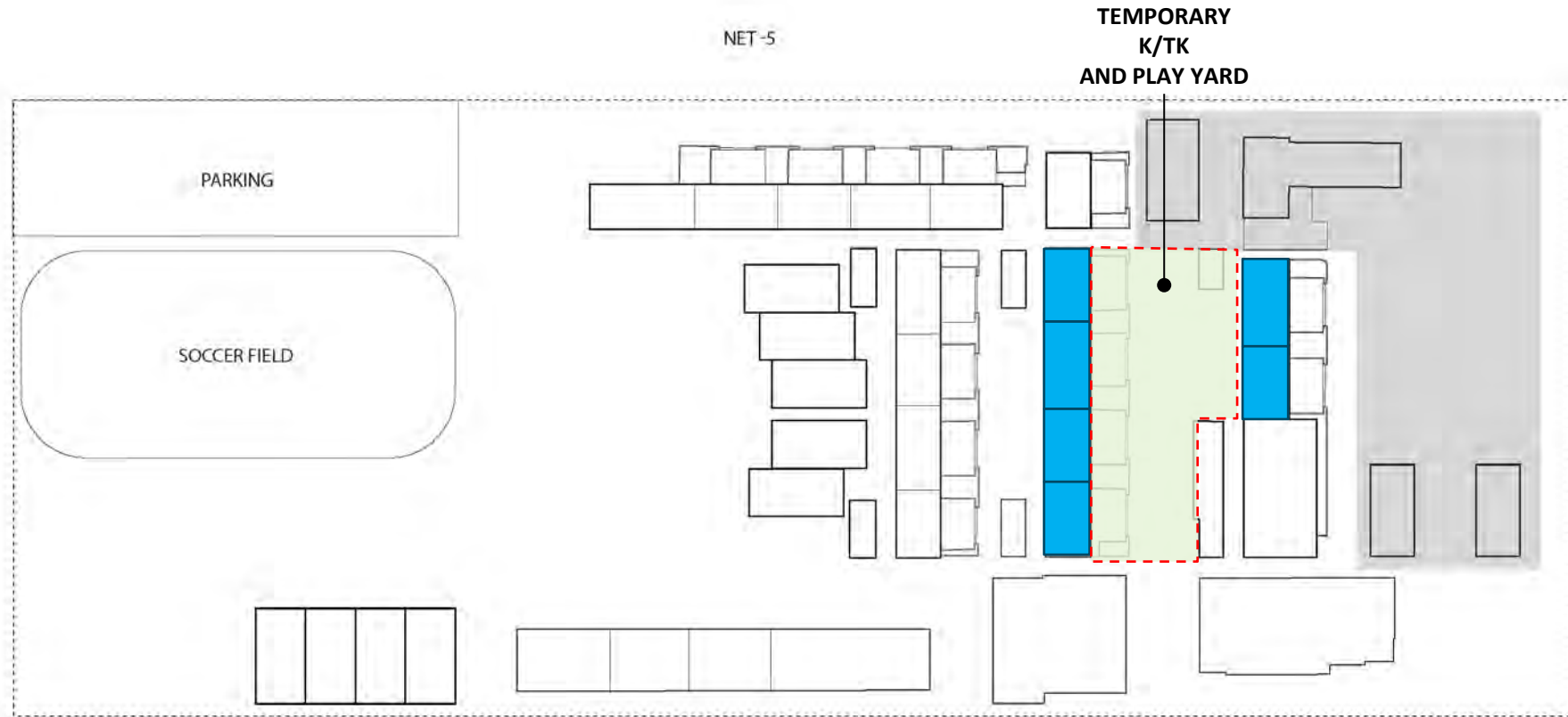
# Proposed Phasing



PHASE 1 DEMO

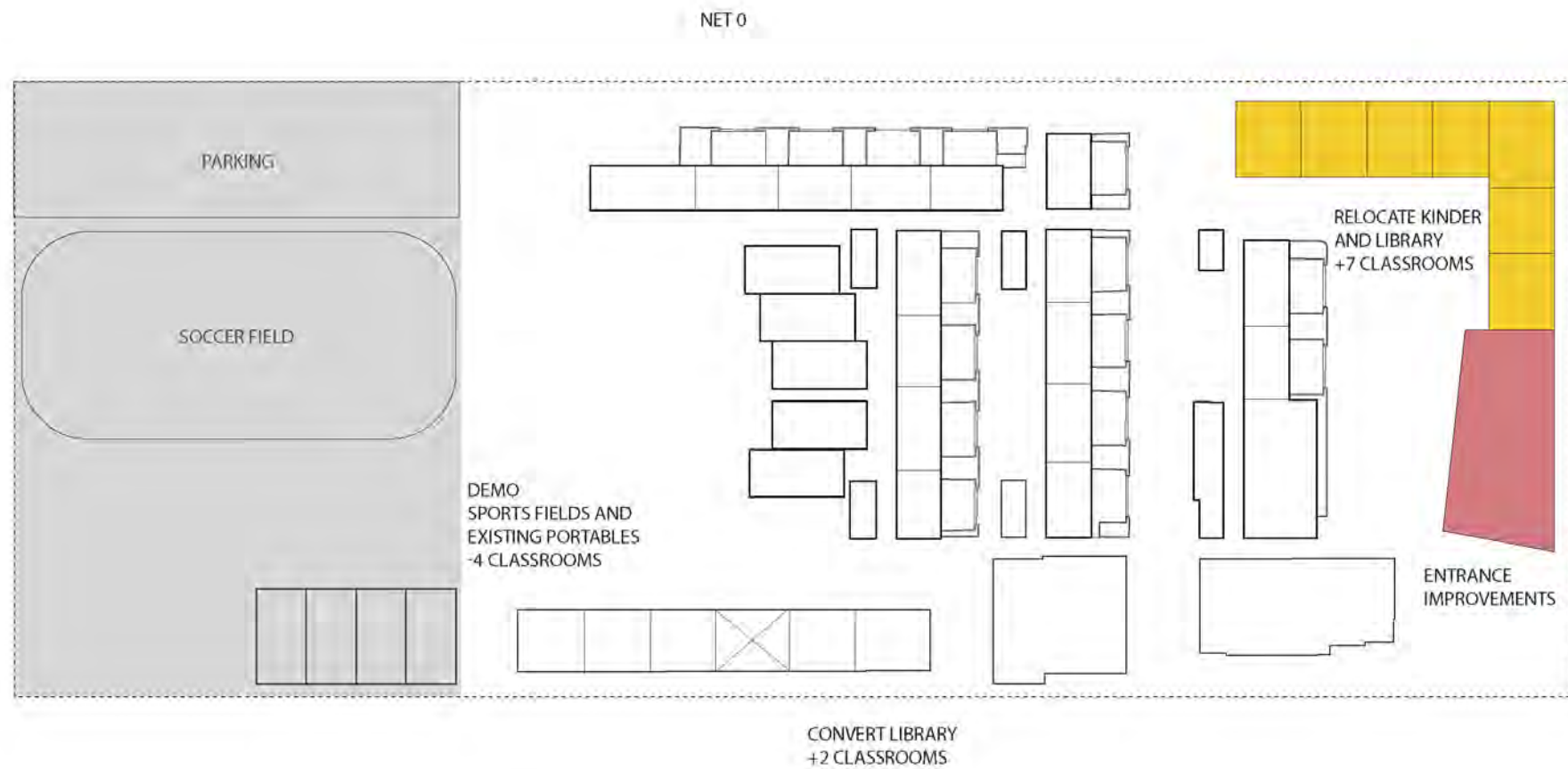


# Proposed Phasing



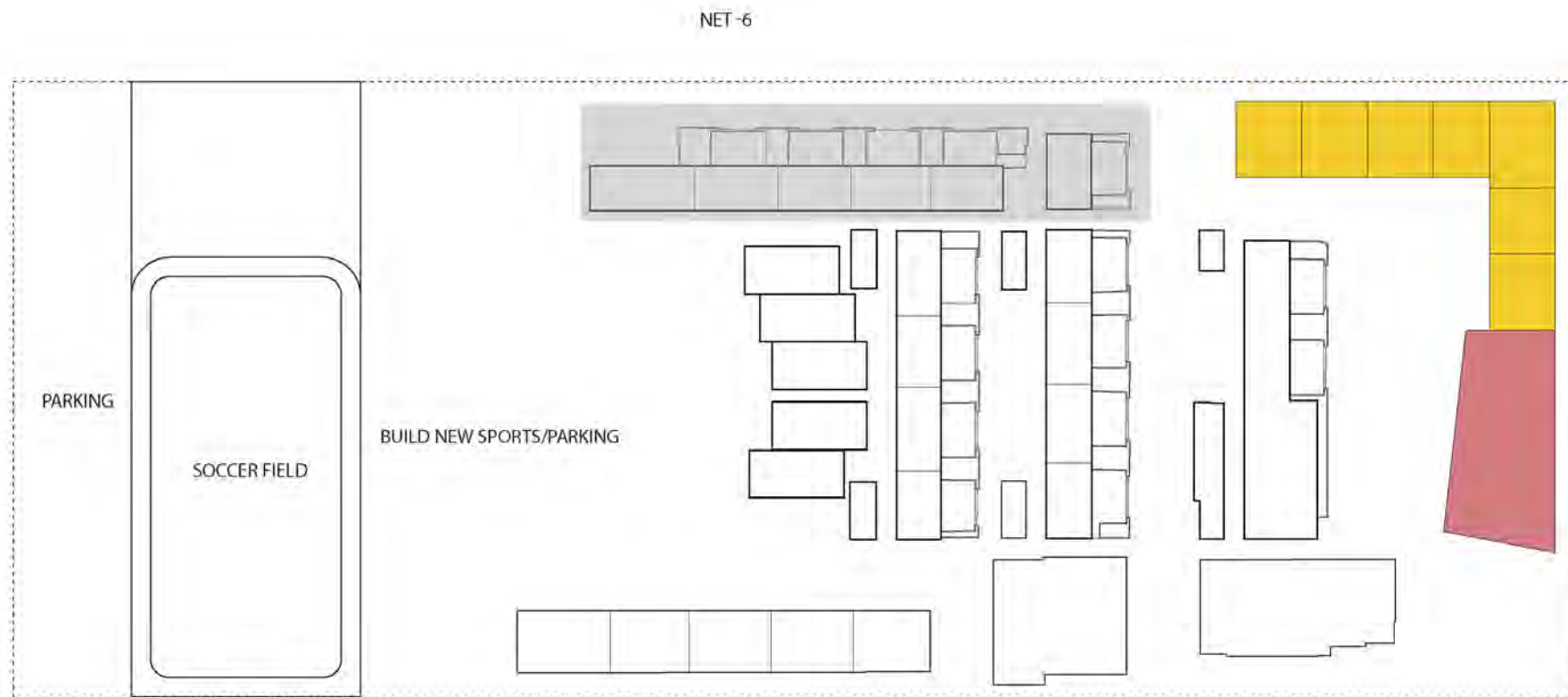
PHASE 1 DEMO





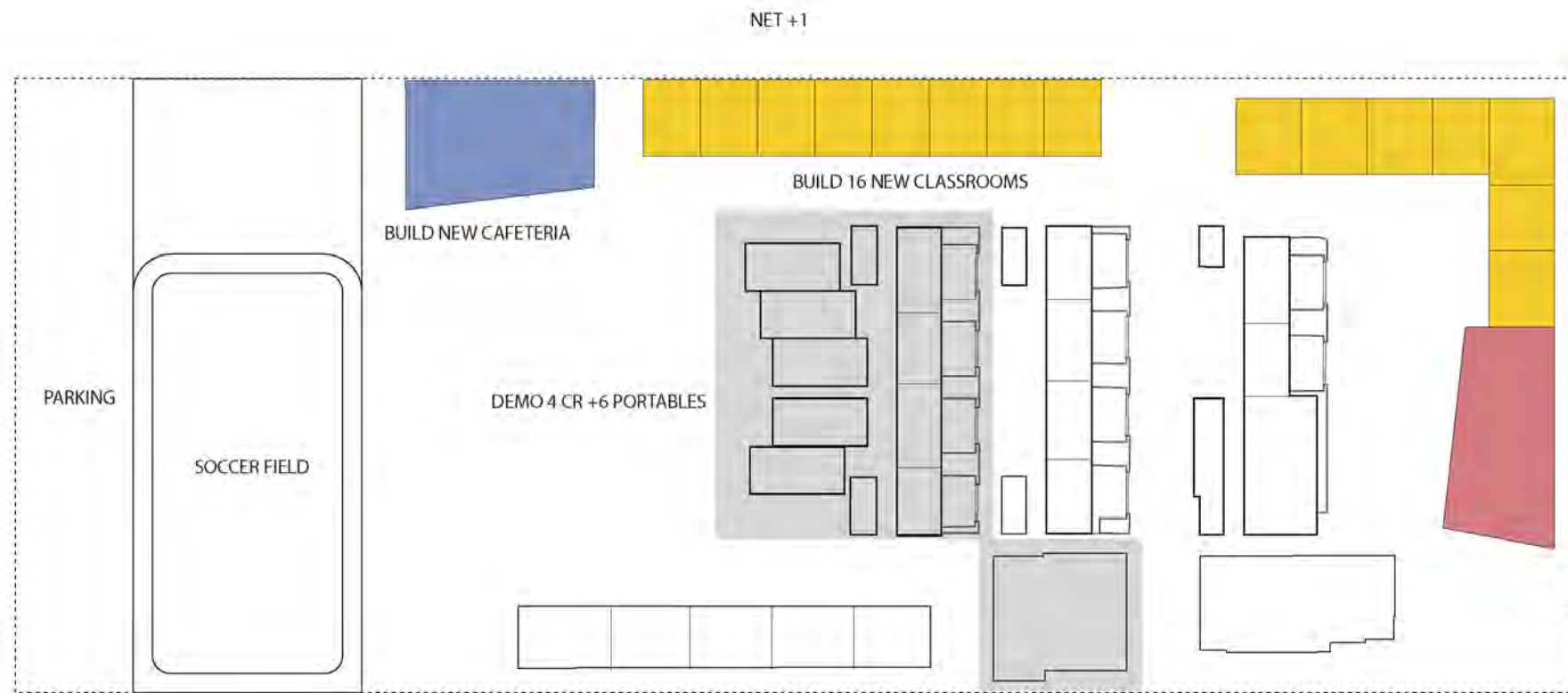
PHASE 1 BUILD + PHASE 2 DEMO





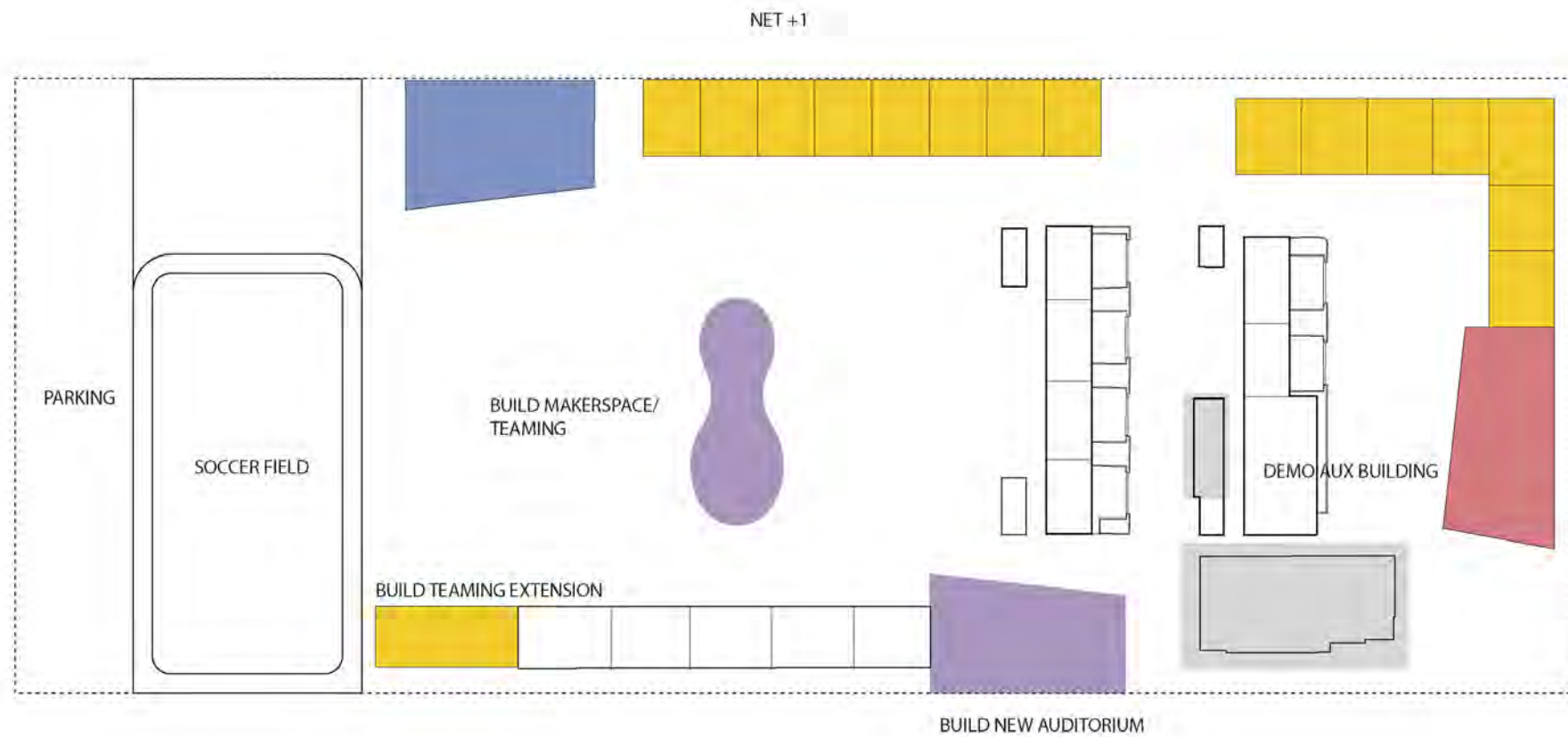
PHASE 2 BUILD + PHASE 3 DEMO





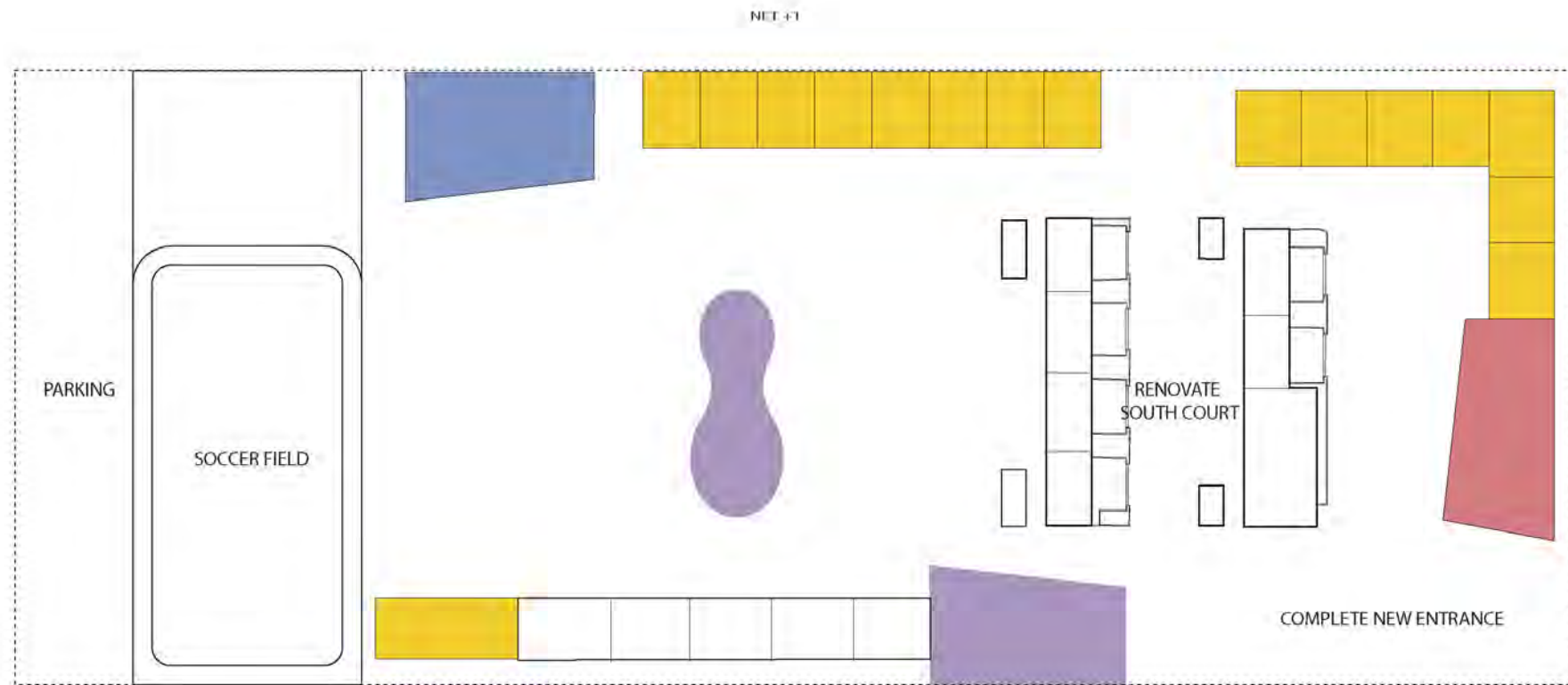
PHASE 3 BUILD + PHASE 4 DEMO





PHASE 4 BUILD + PHASE 5 DEMO





PHASE 5 BUILD



# Phase I: Kindergarten and Library





# Phase I Site Plan





# Kindergarten





# Classroom Interior





# Library Interior





# Thank You!







SANTA MONICA-MALIBU UNIFIED SCHOOL DISTRICT



# Roosevelt Elementary School

Historic Resources



# Introduction

- Development History
- Eligibility & Period of Significance
- Findings: Historic District
- Project and Technical Analysis





# Selected Chronology

- **1907:** First Roosevelt School Opens
- **1933:** Long Beach Earthquake damages school
- **1934:** Marsh, Smith & Powell develop the “Santa Monica Plan” to design the campus: Buildings E, G, J, and K
- **1940:** Joe M. Estep designs Buildings A, B, and C; funding from the WPA
- **1951:** Building C is extended; Buildings D and H are constructed
- **1968:** Building A is built
- **2000:** Addition to Building A is built





# Long Beach Earthquake of 1933

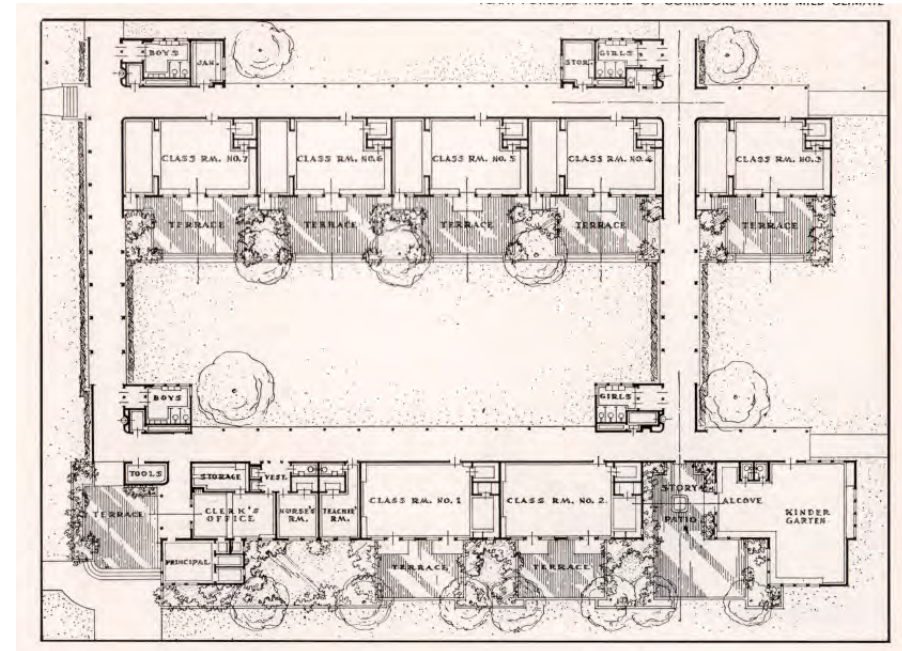
- Prior to earthquake most schools were of masonry construction
- Heavily damaged after earthquake
- Temporary tent schools
- California passed the Field Act





# “Santa Monica Plan” & Marsh, Smith & Powell

- Marsh, Smith and Powell:
  - Meet requirements for new state construction code
  - Reflect intimate, Modern design
  - Emphasis on indoor-outdoor learning
  - Lauded as a model for schools across the nation





# PWA Development

- Federal program to alleviate unemployment during the Great Depression:
- SMMUSD received 1.5\$ Million in Federal Funds
- Included expansion of Roosevelt by Joe M. Estep in 1950







# Eligibility & Period of Significance

## ▪A/1/1: 1935-1940

- Post-Long Beach Earthquake Development of School (Institutional History)
- Rise of cohesively designed campus for seismic stability
- PWA involvement- Federal program to alleviate mass unemployment during the Great Depression

## ▪C/3/4-5: 1935-1940

- PWA Moderne-style buildings designed to withstand seismic activity
- Designed by master architects Marsh, Smith & Powell with innovative “Santa Monica Plan”
  - Precedent-setting with functional teaching spaces, child-centered buildings, and plentiful outdoor spaces

# Historic District

Current Feature Name	Year Built	Integrity	Status
Buildings			
Building B	1940	Good	Contributor
Building C	1940	Good	Contributor
Building E	1935	Good	Contributor
Building G	1935	Good	Contributor
Building J	1935	Good	Contributor
Portion of Building K	1935	Good	Contributor
Site Features			
Lincoln & Montana Quad	1935	Good	Contributor
South Courtyard	1935	Good	Contributor
North Courtyard	1940	Good	Contributor
Brick Ring	1935	Fair	Contributor
Brick Wall	1935	Fair	Contributor
Additional Features			
"Theodore Roosevelt" Panel	c. 1935	Very Good	Contributor
WPA Bronze Plaque	1940	Very Good	Contributor



# Historic District





# Contributors



Building B



Building C



Building E



Building  
G



Building J



Portion of  
Building K



WPA Bronze Plaque



# Contributors



Lincoln & Montana Quad



South Courtyard



North Courtyard



Brick Flagpole Ring



Brick Wall



“Theodore Roosevelt” Panel

# Thank you!







CEQA

***California  
Environmental  
Quality Act***



# CEQA Overview and Objectives

- Disclose to decision makers and the public the significant environmental effects of proposed activities
- Identify ways to avoid or reduce environmental impacts and prevent environmental damage by requiring implementation of mitigation measures
- Disclose to the public reasons for the District's approval of projects
- Foster interagency coordination in the review of projects
- Enhance public participation



California



Environmental



Quality

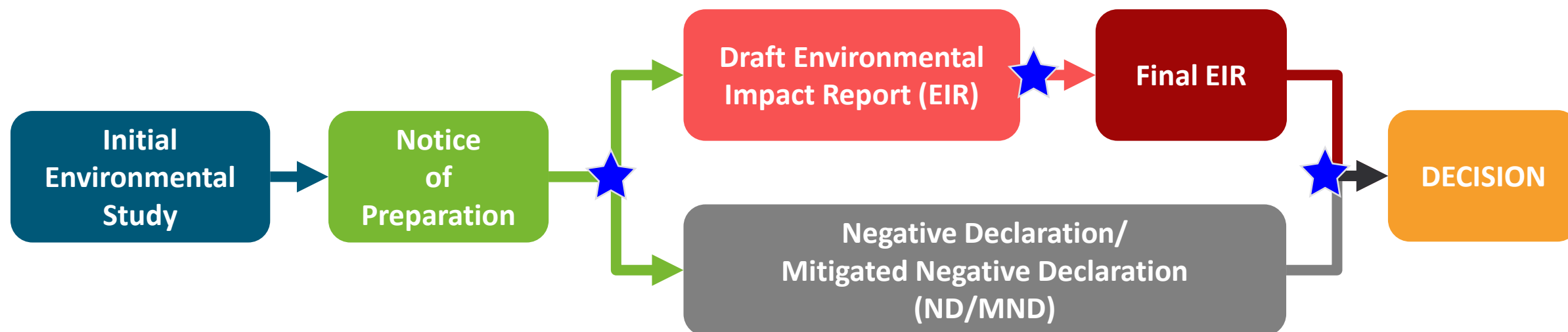


Act





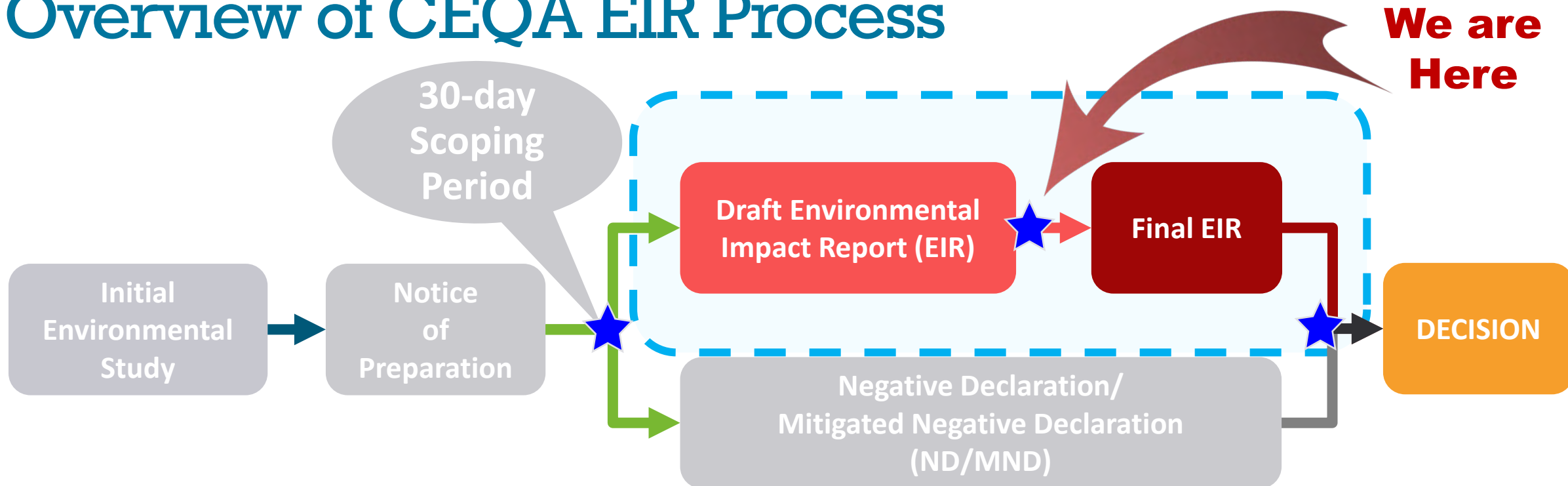
# Overview of CEQA EIR Process



*Represents a period where CEQA incorporates **Public Involvement** into the environmental review process.*



# Overview of CEQA EIR Process



Represents a period where CEQA incorporates *Public Involvement* into the environmental review process.



# 45-Day Public Review and Comment on Draft EIR

**PUBLIC REVIEW PERIOD:** September 16 – October 31, 2024




Draft EIR available for review at:

- **District website:**  
<https://www.smmusd.org/Page/5595>
- **District Offices:**  
1717 Fourth Street, Santa Monica, CA 90401



# Draft EIR Impact Findings



-  = Less than significant impacts
-  = Less than significant impacts, with mitigation
-  = Significant and unavoidable impacts, with mitigation



# Summary of the Draft EIR Mitigation Measures

## Cultural Resources

- MM CUL-1: Documentation, Historic American Building Standards
- MM CUL-2: Interpretive Program
- MM CUL-2: Architectural Historian Oversight
- MM CUL-4: Archaeologist During Ground Disturbance

## Geology & Soils

- MM GEO-1: Paleontological Oversight, Training, Monitoring, and Paleontological Resources Management Plan

## Hazards & Hazardous Materials

- MM HAZ-1: Hazardous Building Material Inspection and Abatement
- MM HAZ-2: Soil sampling for building materials and pesticides and remedial measures
- MM HAZ-3: Hazardous on-site contamination from nearby historical uses

## Noise

- MM NOI-1: Construction Noise Control Plan

## Transportation

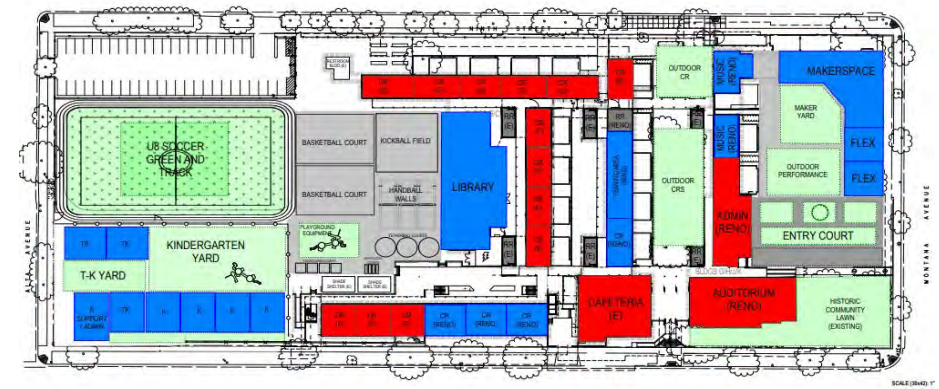
- MM TR-1: Construction Traffic Control Plan

# Project Alternatives

**Alternative 1: Partial Campus Rehabilitation**

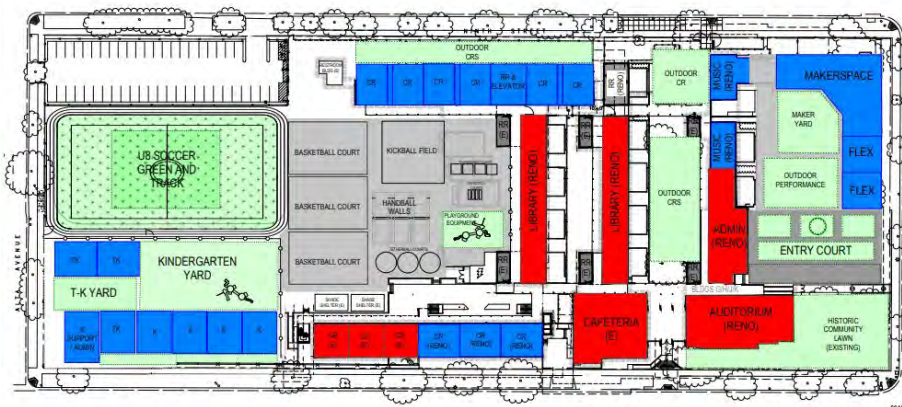


**Alternative 2: Complete Preservation Plus New Development**



**Key:**  
■ MEETS ED SPECS  
■ DOES NOT MEET ED SPECS  
■ Outdoor Areas

**Alternative 3: Majority Preservation**



**Key:**  
■ MEETS ED SPECS  
■ DOES NOT MEET ED SPECS  
■ Outdoor Areas

**Alternative 4: No Project/No Build (Existing Campus)**





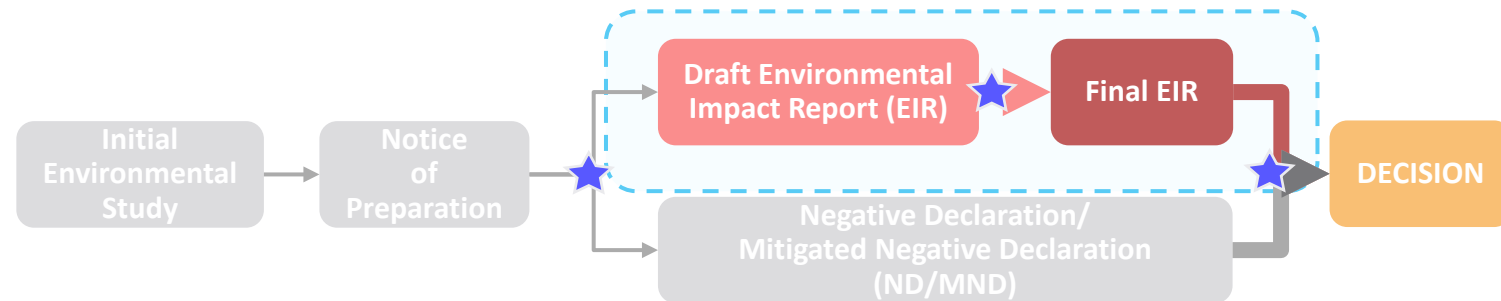
# Next Steps

**PUBLIC  
REVIEW  
PERIOD:**

September 16  
to October 31, 2024

## ***Submit Your Comments!***

Comments accepted until Friday,  
October 31, 2024 at 5 PM



## HOW TO SUBMIT COMMENTS:



**Verbal  
Comments**

*Speak up today!*



**Comment  
Cards**

*Turn in a written  
comment card  
to us here, today!*



**E-mail  
Comments**

*E-mail Carey Upton at:  
Cupton@smmusd.org*



**Mail-in  
Comments**

*SMMUSD  
1717 Fourth Street  
Santa Monica, CA 90401  
Attn: Carey Upton*

Thank You







SANTA MONICA-MALIBU UNIFIED SCHOOL DISTRICT

# Questions?