

# BUILDING FUTURES

FROM THE FACILITY IMPROVEMENT PROJECTS OFFICE  
OF THE SANTA MONICA-MALIBU UNIFIED SCHOOL DISTRICT

FALL 2020



*We appreciate that construction is challenging for everyone: students, faculty, staff, and parents. The work mentioned below is being done with funds from voter-approved bonds. Thank you for your support!*

## MALIBU PATHWAY UPDATE: NEW MHS BUILDING WILL BE READY FOR SPRING

The new library/classroom/administration building is scheduled to be complete and ready for use in January 2021.

The building has two sections. Segment A is the north end of the building, while Segment B is closer to the middle school building. A central elevator serves both sections.

### Segment A

**Upper Level:** Three science labs, two science prep rooms and four classrooms

**Courtyard Level:** Library, book room, work room, media center classroom, project rooms, student union / cafe, career center and two classrooms

### Segment B

**Upper Level:** Vegetative roof demonstration area

**Courtyard Level:** Administration and support spaces

**Ground Level:** Lobby, attendance office, health office, parent center, tech office and additional support services

### Building D Demolished

Contractors demolished the two-story science building and the site was tested to ensure safety compliance.

That means all court-ordered environmental work has been completed.

### Other Work

**Central Plant:** The installation of the new central plant, the heart of the new building's heating, ventilation and air conditioning system, is complete.

**Morning View Drive improvements:** A new drop-off lane has been built along Morning View Drive. It will help reduce traffic issues for parents, staff and our neighbors.



Connect with SMMUSD on:  
Download our mobile app: Santa Monica-Malibu USD





## NEW MHS BUILDING: SEE WHAT'S INSIDE



The library features reconfigurable furniture and areas for reading, study and collaboration.



Classrooms feature segmented tables that can easily be rearranged and stackable chairs to create open space when possible. Upper levels have adjustable skylights to enhance lighting. At right: One of the science labs.



Conference rooms all feature wall-mounted monitors and whiteboards for multimedia access and collaboration.



The Parent Center, adjacent to the main lobby, can be used for meetings by parents and the community.





**THE PORCH PLAN:** Three possible approaches to the design of the high school were considered, but “The Porch,” the plan at right, has moved into development. All approaches result in a campus that keeps vehicle traffic and parking at the edges, making for a safer environment for pedestrians. The Porch provides accessibility between the lower and upper levels of campus, eliminating the need for an elevator.

## ARCHITECTS WORKING WITH DISTRICT, COMMUNITY TO DESIGN HIGH SCHOOL

Architects are now working on plans for the new Malibu High School building. After the Board of Education gave district staff the go-ahead to execute the Malibu campus plan, the contract to design the new Malibu High School was awarded to NAC Architecture, in collaboration with Konig Eisenberg Architecture.

The future high school building, planned for the former Cabrillo Elementary site adjacent to MHS, will be designed to foster 21st-century learning for enrollment of 450 and 600 students. It will be about 70,000 square feet and will include:

- General classrooms of various sizes that can flex in purpose according to need
- Project-based learning areas
- Art classrooms
- Special education classrooms
- Science, technology, engineering and math classrooms
- Campus food services, including the kitchen and high-school eating area (the middle school will have its own), a library and space for high school administrators.

The campus plan envisions a student eating area that would take advantage of Pacific Ocean views.



**Landscaping for the high school site is envisioned to be done in four distinct zones. The zone depicted here is called “academic terrace” and is meant to allow for collaboration. Another zone is called “community gateway” and is envisioned as transitional space.**

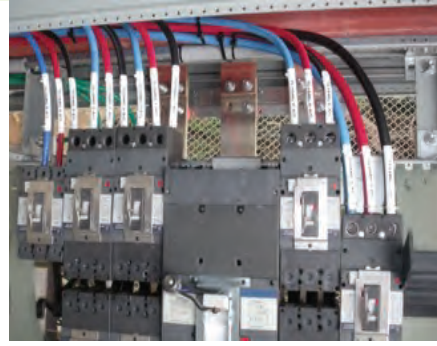
More than 20 meetings have been held with MHS staff, students, community, the Malibu Facility District Advisory Committee and other stakeholder groups.

## SECURITY CAMERAS INSTALLED ON HIGH SCHOOL, MIDDLE SCHOOL CAMPUS

The perimeter camera system, installed to increase campus security, is nearly complete. Cameras are on the perimeter, focused away from campus, and won’t be used for active surveillance of staff or students.

## NEW AIR CONDITIONING, HEATING PROJECT COMPLETED EARLY

With the campus closed to students due to the pandemic, contractors were able to complete the installation of new HVAC equipment and controls in June. That completed the modernization efforts that were funded by Measures ES and M.



The new HVAC system required all new wiring and new electrical switch-gear to go with the more powerful supply from Southern California Edison.

# MALIBU ELEMENTARY



**PLAYGROUNDS COMPLETE:** The district completed the installation of new playgrounds on the upper campus (for kindergarteners) and the one pictured that is open to the community on weekends when the county health office permits it. It includes two slides, swings, and three musical stations with a xylophone (shown), drums and chimes.

