

Santa Monica-Malibu Unified School District



Building Futures

Stay Informed with Building Futures!

Follow the progress of construction projects at your neighborhood school, from initial designs to the final touches. See how your bond dollars are making a difference—building better futures for our students and community!

- ✓ Building updates
- ✓ Building features
- ✓ Project renderings

Bond Dollars
at Work!



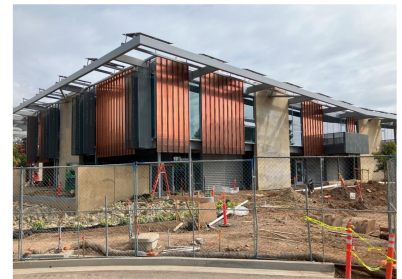
Spring 2025

Malibu High School

Building Tomorrow's Future: New Malibu High School Building

Construction on the new Malibu High School building is moving forward at an impressive pace and is beginning to take shape. The state-of-the-art facility is designed to blend seamlessly into the surrounding coastal environment while serving as a hub for innovation and future-ready learning. Once complete, the campus will provide flexible, collaborative spaces that support project-based learning, creativity and critical thinking.

Expected opening is fall 2025.



Project Progress

The building's exterior is nearly complete, with finishes wrapping up and the roofing already finished. Eco-friendly solar array panels, which will provide renewable energy, are almost complete on the roof and trellis areas. Inside, design finishes are underway as offices and classrooms take shape, showcasing the modern, state-of-the-art learning spaces to come. Final painting, interior wall paneling, and floor coverings have begun in various areas.



Mechanical, electrical, and plumbing systems are being energized and tested in preparation for full operational use. Site work is also advancing, including the installation of concrete walkways, retaining (seat) walls, and three bridges including two pedestrian and one for cars, spanning a functional bio-swale drainage system. The wastewater treatment system is nearing completion and will soon undergo evaluation to meet requirements from the City of Malibu and the Coastal

Commission. The landscaping along with the environmentally sensitive habitat areas are being monitored in compliance with the coastal commission requirements.

This project is funded by Measure M, approved by the voters in November 2018.

Planning Underway for Phases 2 and 3a

Planning and design for Phase 2 and 3a of the Malibu campus project is underway. This project will be funded by Measure MM that was successfully passed by voters in November 2024. The school is grateful to the community for their overwhelming support and trust in this initiative. The funding represents a significant investment in the future of our students and families.



Phase 2 will complete the middle school campus. The hub building will provide an innovation and filming lab, food service and outdoor eating area, a special education/life skills suite, and a new wellness center. A new middle school gymnasium and multipurpose room will be constructed with locker rooms and a dance/yoga studio. Outside there will be fitness opportunities including a rock-climbing slope, bouldering, and a slide.

Phase 3a, will provide a new 40-meter pool with natatorium and separate locker rooms for students and the community.

Construction on this project, including demolition of the old high school building, art building, and removal of portable classrooms, will begin in spring 2026.

Emergency Power

In response to frequent power outages due to public safety power shutoffs mandated by Southern California Edison, SMMUSD is proactively addressing energy resilience across Malibu schools. A design-build agreement for alternative power solutions is anticipated to be approved by the Board of Education in May 2025. The selected firm will design a system that may include solar panels, battery storage, and backup generators to ensure uninterrupted learning during power outages. More information will be shared as the project advances.



The District is deeply grateful to the Malibu community for its unwavering support and commitment to educational excellence. The continued investment through Measure M and Measure MM represents a shared dedication to creating safe, sustainable, and future-ready learning environments for all students.

Construction on a working campus always presents challenges, but the SMMUSD Facility Improvement Projects Department is committed to minimizing disruptions for students and staff while ensuring these enhancements benefit generations to come.

Learn more about the new high school building [here](#).

The future is bright for Malibu High School and with the community's support the sky is the limit!

"A school building is more than a physical structure providing housing, light, heat, and shelter from the elements; it is the one expression of the community's commitment to education. " -Donald Leu



The exterior of the building showing the copper panels.

Exterior photo of current building showcasing chipping paint.



Current 500's Building

Exterior photo of 500's building from street.



Current 500's Building

Exterior photo of 500's building.



Santa Monica USD

<https://bit.ly/FIPHomepage>

