



SANTA MONICA-MALIBU UNIFIED SCHOOL DISTRICT



Huckabee

MORE THAN ARCHITECTS



Malibu Elementary School

Faculty Presentation
November 21st, 2024

Huckabee
MORE THAN ARCHITECTS

We're Happy To Be Here

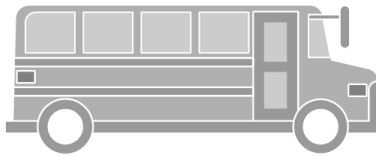
- Huckabee
 - Rudy Monico, Principal Charge
 - Holly Teague, Director of Planning
 - Suzanne Marchman, Director of Educational Partnerships
 - Richard Ingrassia, Director
 - Nelson Zavaleta, Designer
 - Huihang Xu, Designer
- Santa Monica Malibu USD
 - Carey Upton, Chief Operations Officer
 - Michael Burke, Design Manager
 - Christopher Hertz, Malibu Elementary School Principal
 - Noemi Avila-Zamudio, Deputy Bond Program Manager

What's on the Agenda?

- Campus Assessment/ Analysis
- Projects – Collect Feedback
- Q & A



What do we
leave behind?



What do we
take with us?



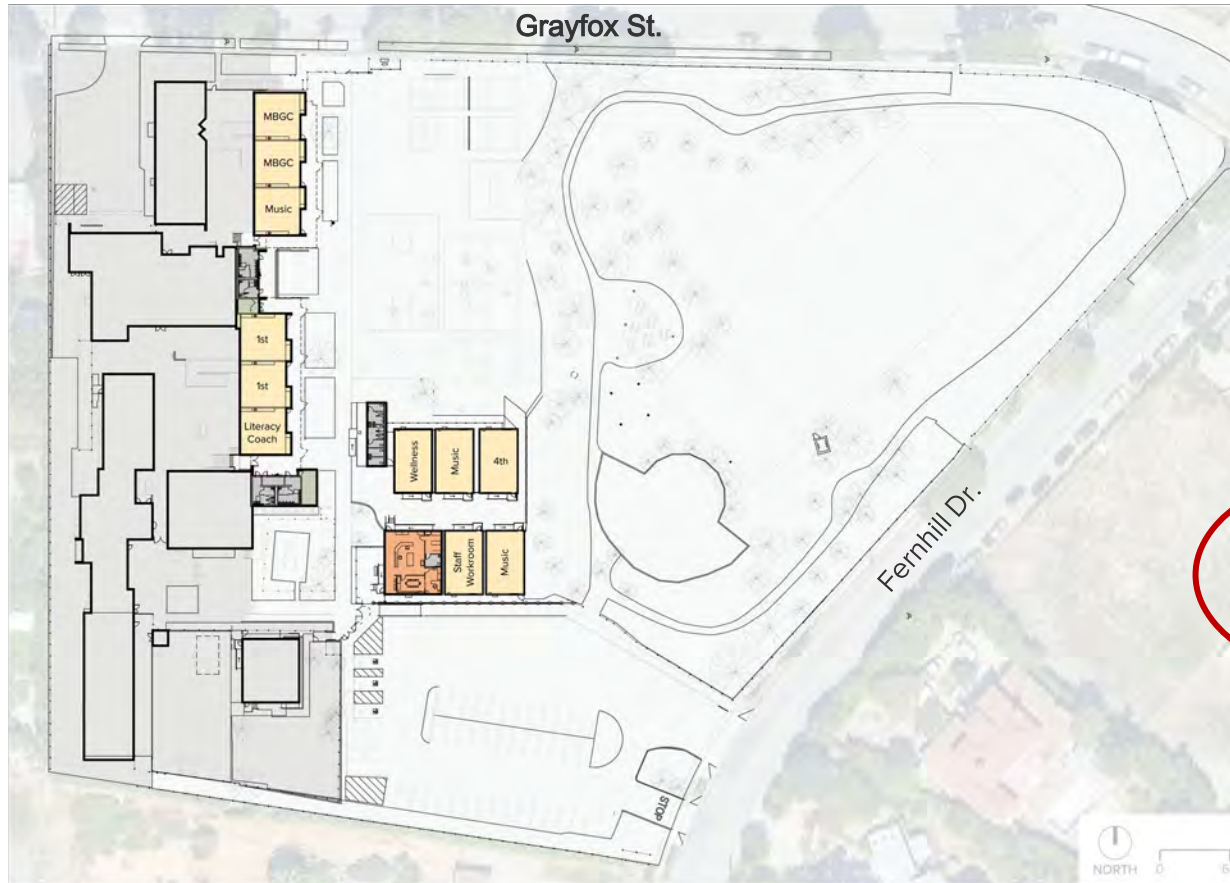
What do we want
for our **future**?

Campus Assessment / Analysis



What do we
leave behind?

Existing Campus Occupancy Plan– Lower Level



CLASSROOM COUNT - Lower Level	
General Education	6
Relocatables	5
Total	11

Existing Campus Occupancy Plan– Upper Level



LEGEND	
	CLASSROOM
	KINDERGARTEN
	ADMINISTRATION
	MULTIPURPOSE
	KITCHEN
	LIBRARY
	MARINE SCIENCE CLASSROOM
	ART CLASSROOM
	SPECIAL EDUCATION

CLASSROOM COUNT - Lower Level	
General Education	6
Relocatables	5
Total	11

CLASSROOM COUNT - Upper Level	
General Education	6
Science/Art, Specialized	6
Kindergarten	2
Kindergarten Relocatables	1
Total	15
Grand Total Permanent	20
Grand Total Relocatable	6



Join at
slido.com
#1187 781



Malibu Elementary School



Look Fors	Option 1	Option 2	Option 3
Parent Drop Off / Pick up			
# of Classrooms			
Learning Hub (Library, Marine Science, and Art)			
Courtyard			
Single vs. Two Storied Buildings			
Multipurpose Building			
Kindergarten Classrooms and Playground			
Culinary Café & Outdoor Dining			
Admin Supervision			

Projects: 3 Options



What do we want
for our **future**?



First let's talk about Grayfox Street.



Option 1



Option 1 – Pros & Cons



PROS

- ① **Immediate Benefits from Phase 1 Construction:** Providing new construction in the first phase maximizes benefits for students.
- ② **Designated Play Area for Kindergarten:** A dedicated play area specifically for kindergarten fosters safe and engaging play experiences.
- ③ **Convenient Campus Layout:** The building layout is adjacent to a central axis, making navigation easy for students, staff, and families.
- ④ **All Single-Story Buildings**
- ⑤ **Unified Learning Hub:** Library, Marine Science and Art create unified “Learning Hub”.
- ⑥ **Safe Pickup and Drop-off:** New campus entry flanked by outdoor assembly areas creates safe space for students to assemble during pickup and drop off.

CONS-

- ① **Long Travel Distance:** The kindergarten is situated at the far end of the campus, making it less convenient for children and teachers during arrival and dismissal.
- ② **Lack of Greenfield:** Introducing limited courtyard green space back to campus.
- ③ **Loss of Classrooms:** Net reduction of (1) permanent classroom building.

Option 2

LEGEND

- CLASSROOM
- KINDERGARTEN
- ADMINISTRATION
- MULTIPURPOSE
- CULINARY CAFE
- LIBRARY
- MARINE SCIENCE
- ART CLASSROOM
- SPECIAL EDUCATION



NEW BUILDING LEGEND

- ① NEW ADMINISTRATION BUILDING
- ② NEW CULINARY CAFE
- ③ EXISTING MULTIPURPOSE BUILDING
- ④ NEW 1-STORY CLASSROOM BUILDING
- ⑤ NEW ART & MARINE SCIENCE CLASSROOM
- ⑥ MUSIC ADDITION/RENOVATION
- ⑦ NEW LIBRARY
- ⑧ NEW KINDERGARTEN CLASSROOM AT LOWER LEVEL
- ⑨ NEW BOY'S AND GIRL'S CLUB AT LOWER LEVEL
- ⑩ NEW 2 STORY CLASSROOM BUILDING

SITE IMPROVEMENTS LEGEND

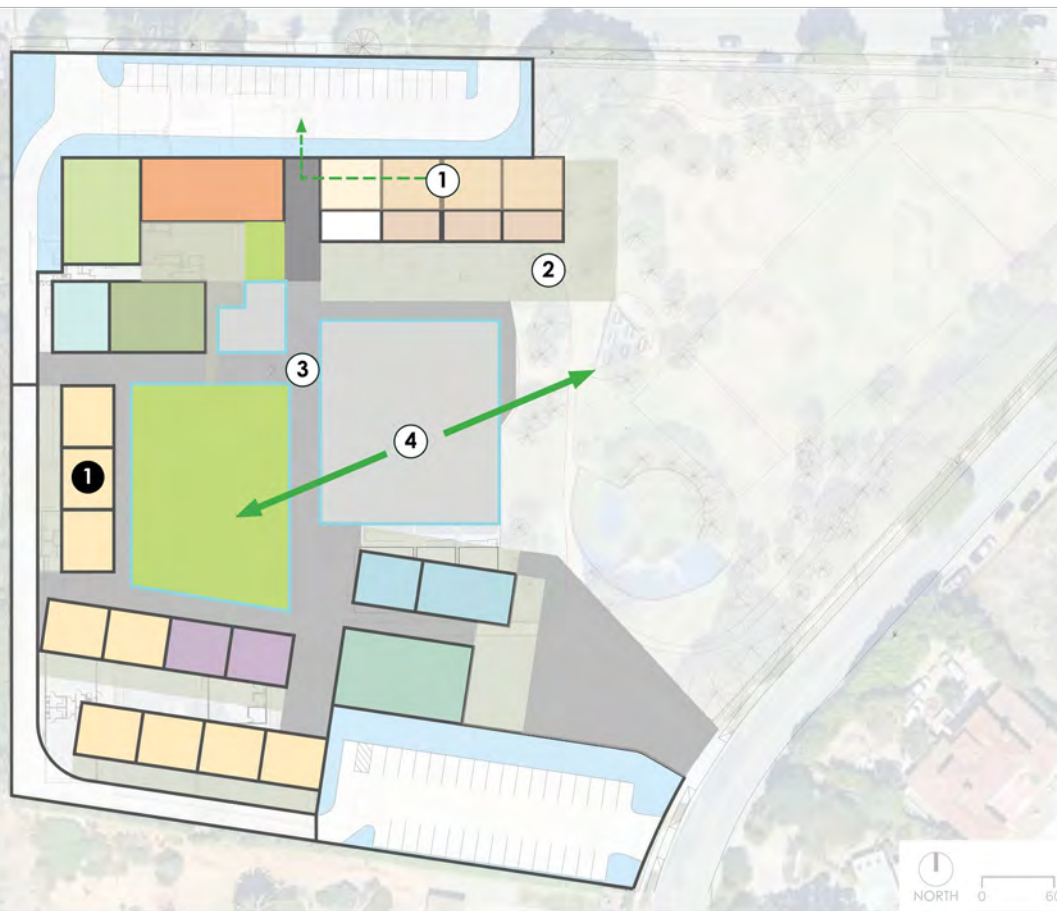
- ⑪ OUTDOOR ASSEMBLY AREA
- ⑫ OUTDOOR DINING AREA
- ⑬ OUTDOOR CLASSROOM
- ⑭ OUTDOOR READING GARDEN
- ⑮ HARDCOURT PLAY AREA
- ⑯ KINDERGARTEN PLAY AREA
- ⑰ PARENT DROP-OFF AND VISITOR PARKING (23 SPACES)
- ⑱ FACULTY PARKING LOT (35 SPACES)
- ⑲ MAINTENANCE ROAD
- ⑳ COURTYARD
- ㉑ LEVEL TRANSITION LANDSCAPE

----- PEDESTRIAN CIRCULATION

CLASSROOM COUNT

General Education Classrooms	18
Science/Art	3
Kindergarten	3
Total	24

Option 2 – Pros & Cons



PROS

- 1 **Reduced Travel Distance for Kindergarten:** Kindergarten classrooms are located close to the main entry, minimizing travel time for young students.
- 2 **Designated Play Area for Kindergarten:** A dedicated play area specifically for kindergarten fosters safe and engaging play experiences.
- 3 **Convenient Campus Layout:** The building layout is adjacent to a central axis, making navigation easy for students, staff, and families.
- 4 **Integrations with Nature:** The hardcourt play area is positioned next to an existing green field, and a new courtyard is placed at the center of the campus, creating a seamless blend of natural and constructed environments for enhanced outdoor experiences.

CONS

- 1 Operational Challenges:** Phased construction may lead to operational inefficiencies if key facilities are not completed in sync.

Option 3



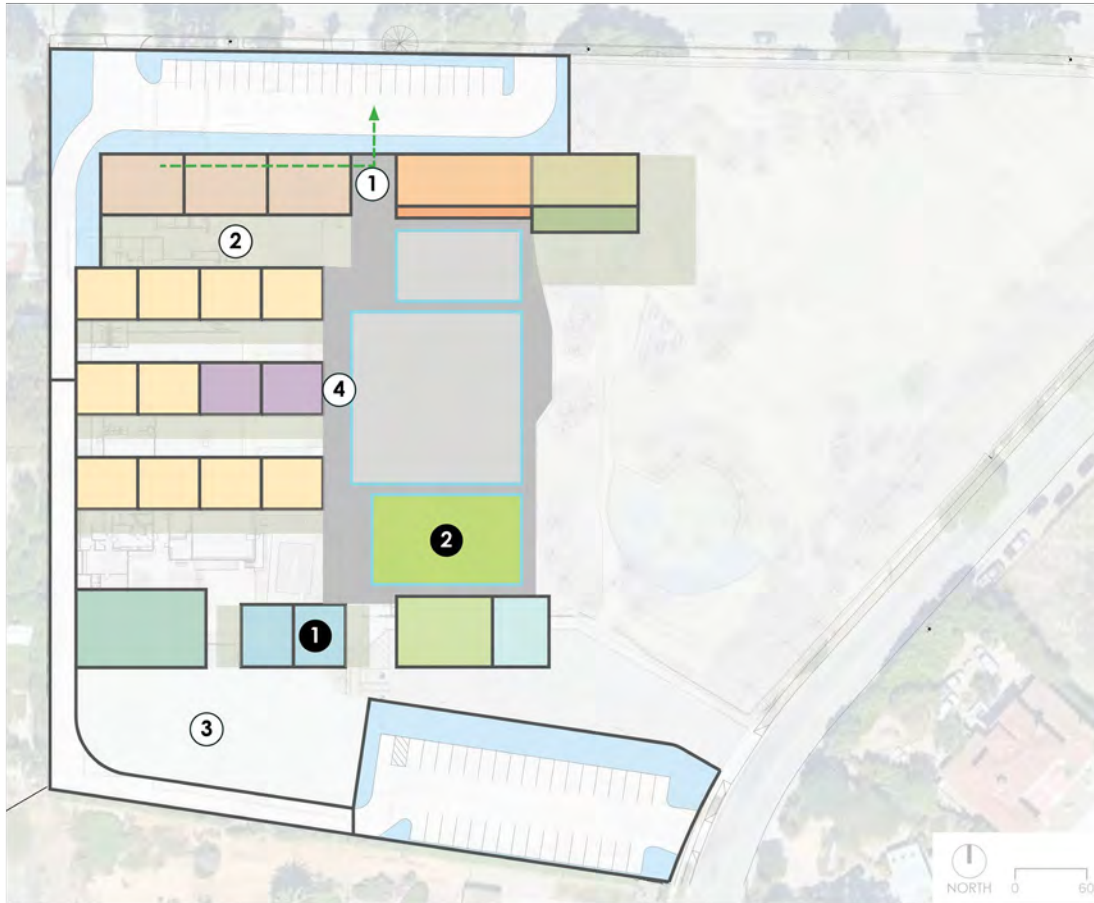
Option 3 – Pros and Cons

PROS

- ① **Reduced Travel Distance for Kindergarten:** Kindergarten classrooms are located close to the main entry, minimizing travel time for young students.
- ② **Designated Play Area for Kindergarten:** A dedicated play area specifically for kindergarten fosters safe and engaging play experiences.
- ③ **Future Expansion Opportunities:** The design allows for potential future expansions, accommodating growth in student enrollment and program offerings.
- ④ **Convenient Campus Layout:** The building layout is adjacent to a central axis, making navigation easy for students, staff, and families.

CONS

- ① **Potential Overlap Issues:** Before other phases can be completed, the initial layout may not function well in the long term.
- ② **Lack of Greenfield:** Introducing limited courtyard green space back to campus.





Join at
slido.com
#1187 781



Malibu Elementary School



Look Fors	Option 1	Option 2	Option 3
Parent Drop Off / Pick up			
# of Classrooms			
Learning Hub (Library, Marine Science, and Art)			
Courtyard			
Single vs. Two Storied Buildings			
Multipurpose Building			
Kindergarten Classrooms and Playground			
Culinary Café & Outdoor Dining			
Admin Supervision			

Option 1



Option 1 – Phase 1



PHASE 1 LEGEND

- Project No. 1 - Vertical Circulation to Upper Level of Campus.**
New elevator and stairs with seating areas to connect lower level of campus to upper level.
- Project No. 2 - Outdoor Reading Garden at Library.**
New Outdoor Reading Garden to create extension of Library and connection to lower level of campus. Reading garden will include landscaping with steps and seating with areas for breakout learning and shade.
- Project No. 3 - Temporary Replacement of Existing Relocatables.**
Existing relocatables will be replaced with others owned by the District. District Office will temporarily move into this area while permanent District Offices are completed.
- Project No. 4 - Reconfiguration of Parking Lot.**
 - New Prent Drop-Off and Visitor Parking Lot (11 Parking Spaces)
 - New Faculty Parking Lot (35 Parking Spaces)

CLASSROOM COUNT

New Classrooms	0
Demolished Classrooms	5
Usable during phase	21
End of phase	21



Option 1 – Phase 2



Option 1 – Phase 3



PHASE 3 LEGEND

- Project No. 1 - Temporary Administration Building.**
Temporary Administration at existing relocatable pending phase 4 projects
- Project No. 2 - Thematic Learning Hub.**
 - New Science & Art Classroom
 - New Classroom
 - Outdoor Classroom
 - Thematic Learning Hub Connection to Library

CLASSROOM COUNT

New Classrooms	2
Demolished Classrooms	0
Usable during phase	21
End of phase	23



Option 1 – Phase 4



PHASE 4 LEGEND

- Project No. 1 - Demolition of North Campus.**
Demolition of existing 2-Story Classroom Buildings, Multipurpose Building, 1 Story Classroom Building and all associated site work.
- Project No. 2 - New Parent Drop-Off and Visitor Parking.**
A. New Parent Drop-Off at Grayfox Street
B. New Visitor Parking
C. New Maintenance Road
- Project No. 3 - New Administration and Multipurpose Building.**
A. New Administration Building
B. New Campus Entry
C. New Multipurpose Building
- Project No. 4 - New Classroom Building.**
A. New 1-Story Classroom Building
B. New Outdoor Classroom

CLASSROOM COUNT

New Classrooms	5
Demolished Classrooms	16
Usable during phase	7
End of phase	12



Option 1 – Phase 5



PHASE 5 LEGEND

- Project No. 1 - New Classroom Building.**
 - New 1-Story Classroom Building
 - New Outdoor Classroom
- Project No. 2 - New Kindergarten Complex.**
 - New Kindergarten Classroom Building
 - New Outdoor Classroom
 - New Kindergarten Playground
- Project No. 3 - Maintenance Road.**
 - New Maintenance Road
- Project No. 4 - New Library and Science/Art Classroom.**
 - New Library Building
 - New Reading Garden
 - New Science/Art Classroom
 - New Outdoor Classroom
- Project No. 5 - Hard Court Play Area.**
 - Refinished and revitalized Hard Court Play Area

CLASSROOM COUNT

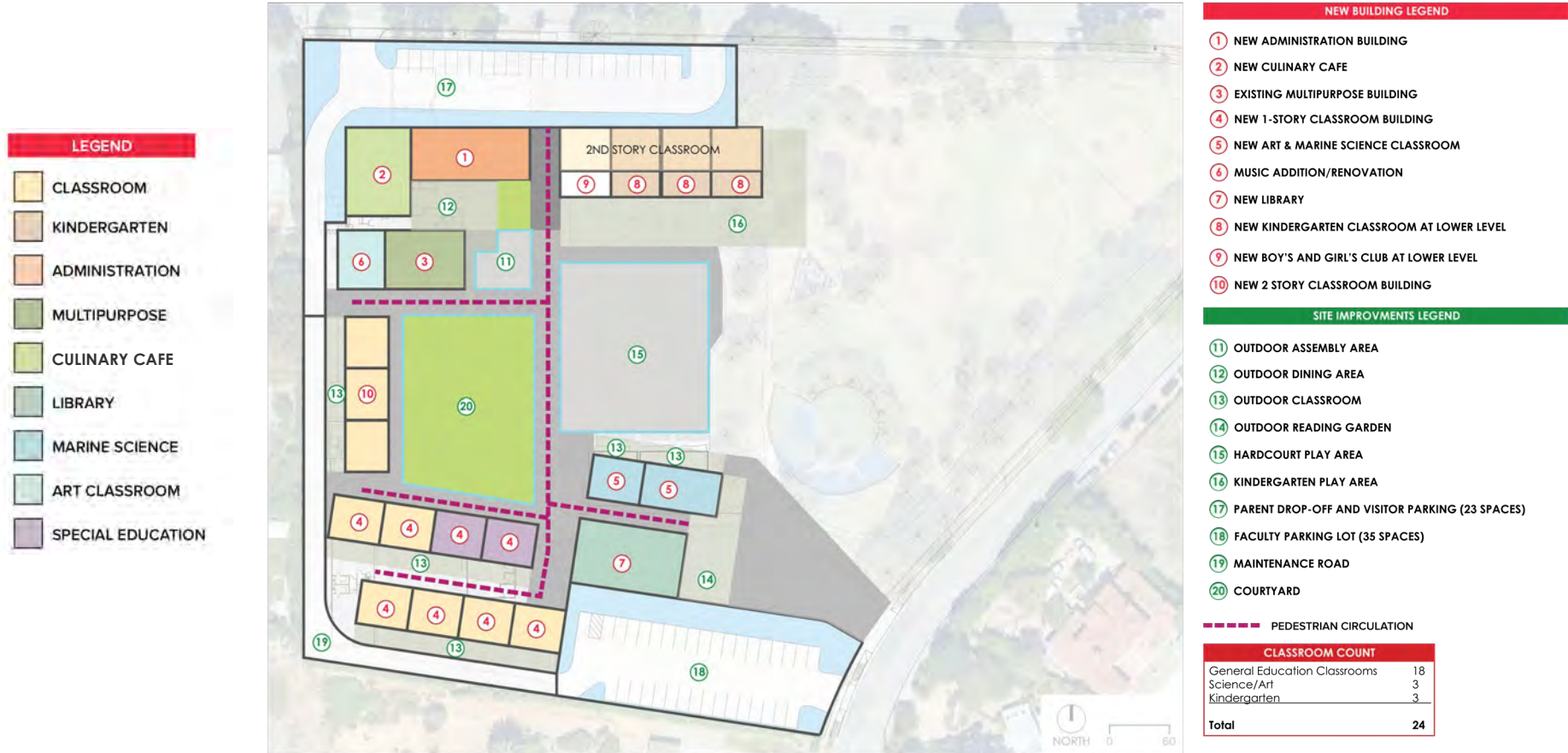
New Classrooms	12
Demolished Classrooms	5
Usable during phase	7
End of phase	19



Option 1



Option 2





Option 2 – Phase 1

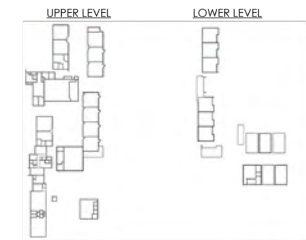


PHASE 1 LEGEND

- ① **Project No. 1 - New Two Story Classroom Building.**
- A. New Kindergarten Classroom at Lower Level
 - B. New Boy's & Girl's Club at Lower Level
 - C. New Classroom at Upper Level
 - D. New Kindergarten Play Area

CLASSROOM COUNT

New Classrooms	8
Demolished Classrooms	0
Usable during phase	26
End of phase	34



Option 2 – Phase 2



PHASE 2 LEGEND

- Project No. 1 - Multipurpose Building and Music.**
 - Multipurpose Building
 - Music Addition/Renovation
- Project No. 2 - New Parent Drop-Off and Visitor Parking.**
 - New Parent Drop-Off at Grayfox Street
 - New Visitor Parking
 - New Maintenance Road
- Project No. 3 - New Administration and Culinary Cafe.**
 - New Administration Building
 - New Campus Entry
 - New Culinary Cafe
 - New Outdoor Dining
 - New Landscaped transition to lower level with built in seating and shade

CLASSROOM COUNT

New Classrooms	1
Demolished Classrooms	9
Usable during phase	25
End of phase	26



Option 2 – Phase 3



Option 2 – Phase 4



Option 2 – Phase 5



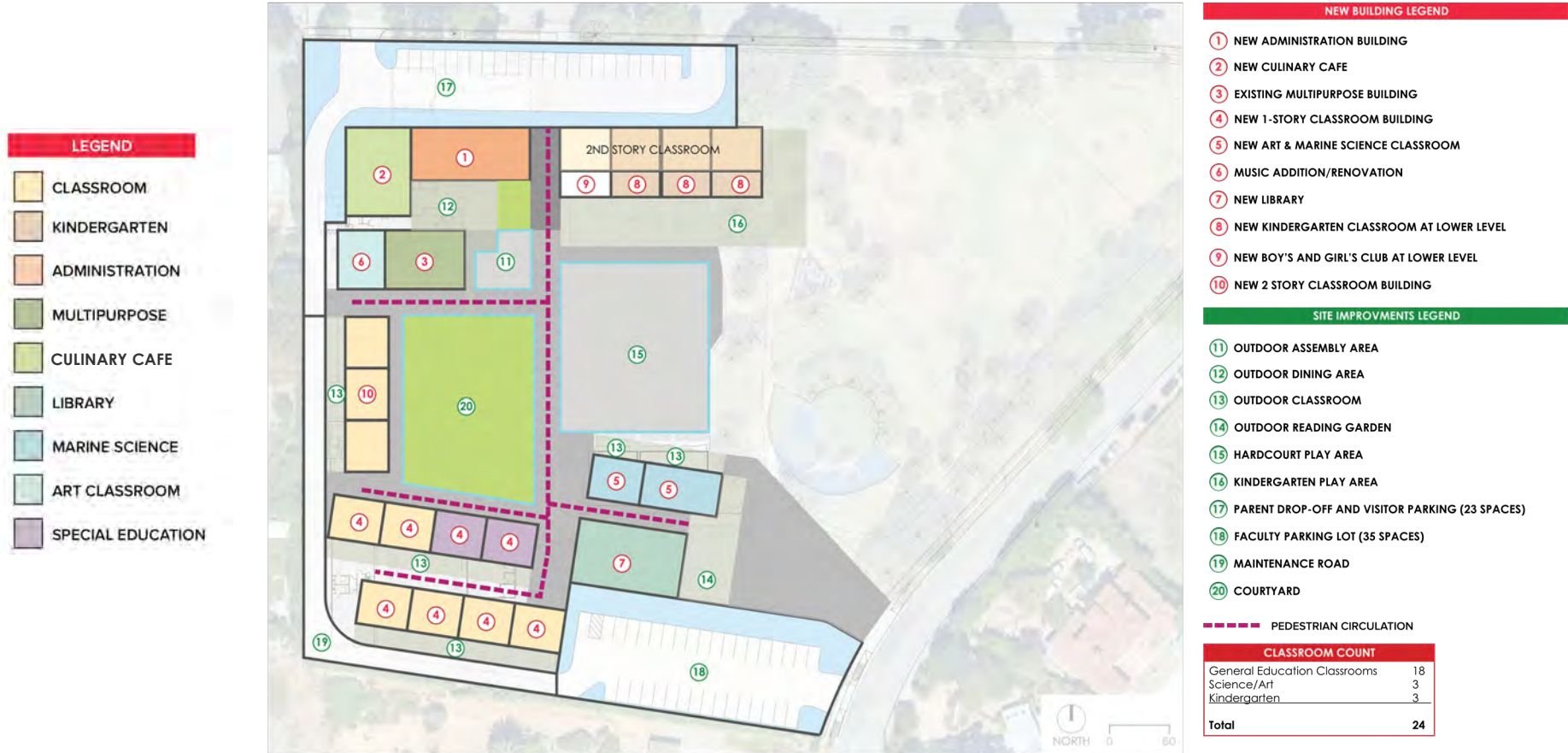
PHASE 5 LEGEND

- Project No. 1 - Hard Court Play Area.**
Refinished and revitalized Hard Court Play Area.
- Project No. 2 - New Classroom Building.**
 - New 1-Story Classroom Building
 - New Outdoor Classroom

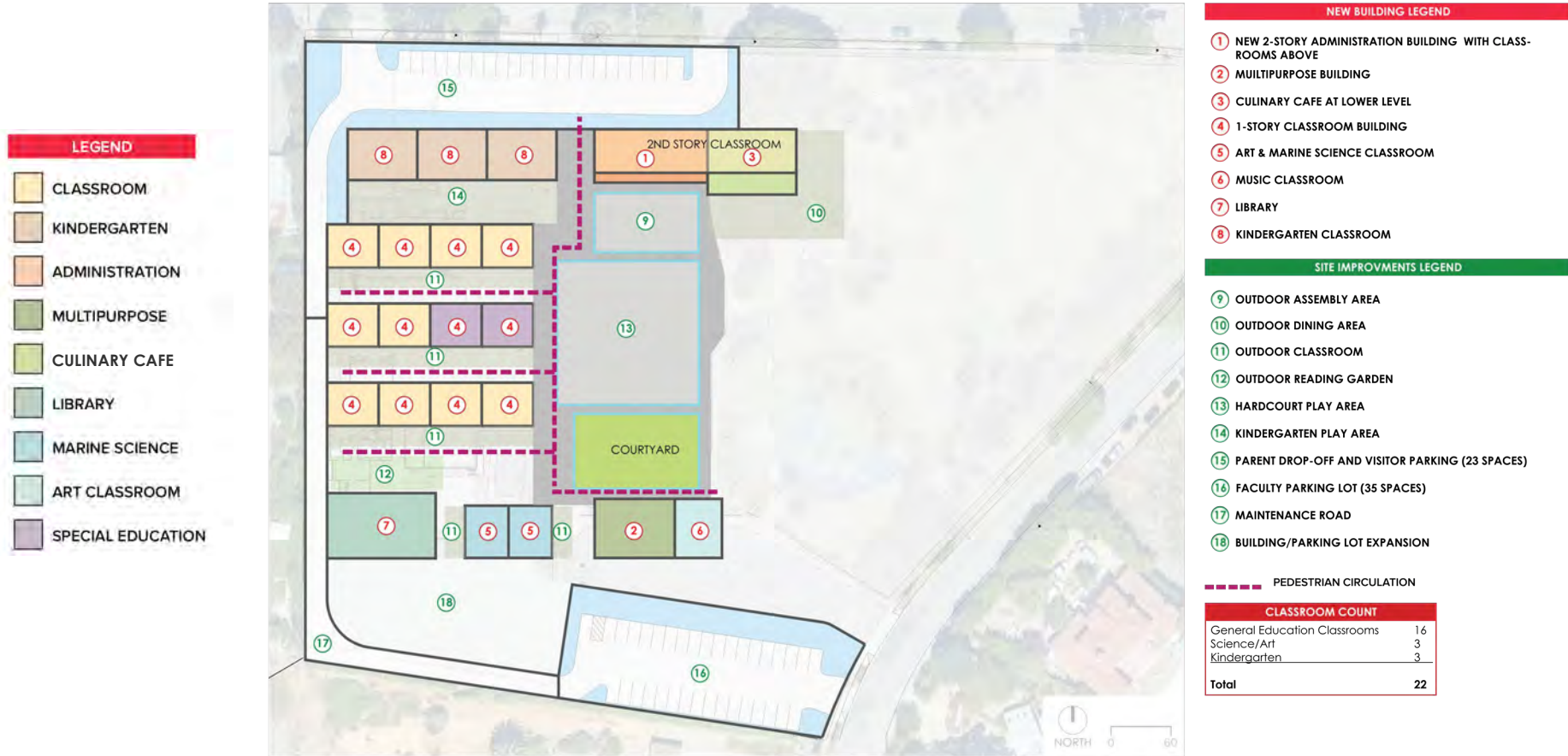
CLASSROOM COUNT	
New Classrooms	8
Demolished Classrooms	6
Usable during phase	16
End of phase	24



Option 2



Option 3



Option 3 – Phase 1

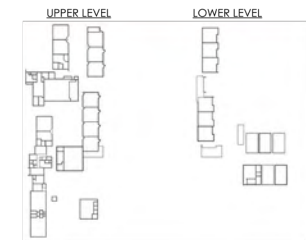


PHASE 1 LEGEND

- ① **Project No. 1 - New Two Story Building.**
- A. New Administration Building and Culinary Cafe with Classrooms Above.
 - B. New Outdoor Dining Area.

CLASSROOM COUNT

New Classrooms	4
Demolished Classrooms	0
Usable during phase	26
End of phase	30



Option 3 – Phase 2



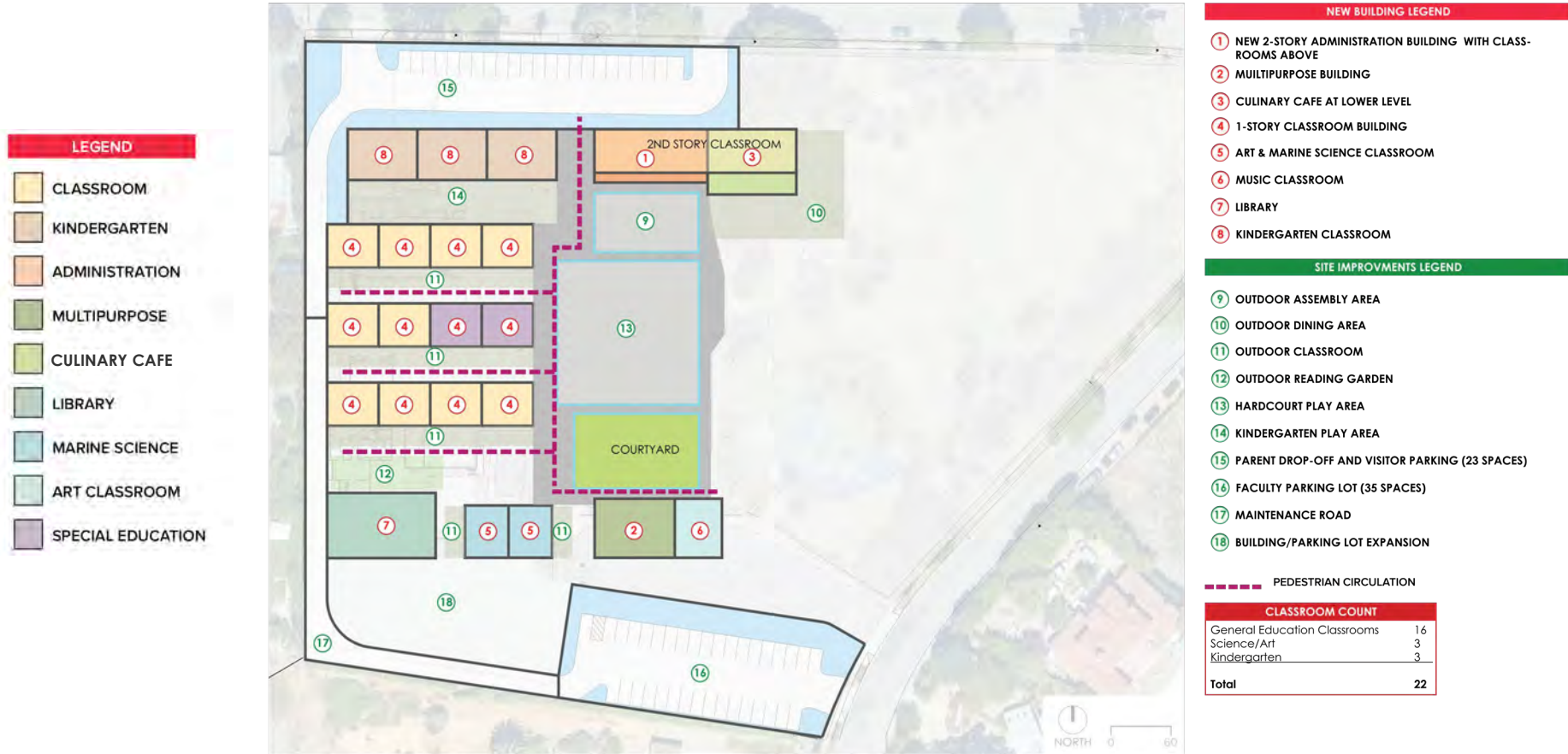
Option 3 – Phase 3



Option 3 – Phase 4



Option 3



Q & A



What do we want
for our **future**?

Huckabee
MORE THAN ARCHITECTS



Huckabee

MORE THAN ARCHITECTS