

Santa Monica-Malibu Unified School District



Building Futures

Stay Informed with Building Futures!

Follow the progress of construction projects at your neighborhood school, from initial designs to the final touches. See how your bond dollars are making a difference—building better futures for our students and community!

- ✓ Building updates
- ✓ Building features
- ✓ Project renderings

Bond Dollars
at Work!



Winter 2025

McKinley Elementary School

Building Tomorrow's Future: New Classroom and Administration Building

Construction of the new classroom and administration building at McKinley Elementary began in the summer of 2024 and is making progress. This transformative project is funded through Bond Measure SMS, reflecting the community's commitment to providing modern, high-quality learning environments.



The project includes the construction of state-of-the-art classrooms and administrative spaces designed to align with SMMUSD's [Educational Specifications](#), the District's plan to develop future learning environments. These new facilities will feature upgraded technology, energy-efficient systems and flexible spaces to support innovative teaching and learning.

New Classroom and Administration Building

Once completed, the new building will serve as a cornerstone of McKinley Elementary School offering a vibrant and inspiring space for students, educators and the school community.



The project also includes a new campus pick-up and drop-off area, upgraded security, reconfigured accessible parking, and new entry gates and driveways.

Project Overview

The new two-story, 24,000 square foot classroom and administration building will provide eight new classrooms with break-out rooms and outdoor learning spaces. The new building will



have a designated drive-through drop off and pick-up, along with a secure entrance to the school, thus promoting a safer school experience for students, staff and parents. Temporary bungalows will be replaced with these large new classrooms with connected outdoor learning spaces that will foster collaborative future-ready teaching and learning. The new administration building will also provide a health office, reception area, elevator and an office space/conference room.

The new building is estimated to be completed by winter 2026.

Construction on a working campus always presents challenges, but the SMMUSD Facility Improvement Projects Department is committed to minimizing disruptions for students and staff while ensuring these enhancements benefit generations to come.

Stay tuned for more updates as we continue to build the future of McKinley Elementary School!

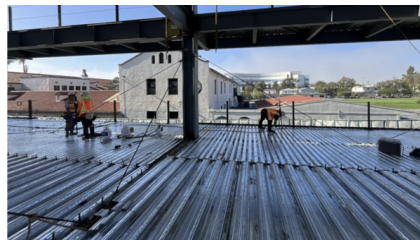
Learn more about the new classroom and administration building [here](#).

The future is bright for McKinley Elementary and with the community's support the sky is the limit! *"A school building is more than a physical structure providing housing, light, heat, and shelter from the elements; it is the one expression of the community's commitment to education."* -Donald Leu



New Classroom and Administration Building

Construction crews working on site.



New Classroom and Administration Building

Electricians surveying level 2.



New Classroom and Administration Building

Tightening the structural steel bolts at the entrance of the new administration office.



Santa Monica USD

<https://bit.ly/FIPHomepage>

