



**SANTA MONICA-MALIBU UNIFIED SCHOOL DISTRICT
NEWS RELEASE**

CONTACT: Esmi McKay
310.450.8838, ext. 79397
ecareaga@smmusd.org

FOR IMMEDIATE RELEASE
March 12, 2024

Malibu High School Reaches New Heights with the Topping Out Ceremony Celebration

Join the tradition! The Santa Monica-Malibu Unified School District cordially invites Malibu students, staff, elected officials and parents to participate in a significant milestone in the construction of the new award-winning Malibu High School (MHS). The District is proud to announce a steel topping out ceremony set to occur at Malibu High School on Thursday, March 21, 2024, at 3:45 p.m. Your presence is invaluable as we commemorate this momentous occasion together.



Rendering of the new Malibu High School exterior.

Please RSVP if you would like to attend:
<https://bit.ly/MHStoppingOut032124>

Sturdy close-toed shoes are required as this is an active construction site.

Parking will be available in the student parking lot adjacent to the pool and behind the bus barn.

History of topping out ceremony:

Over four months ago, construction crews at MHS embarked on building its classroom, administration, library and cafeteria facilities. Since then, major progress has been achieved.

The topping out ceremony is an age-old construction tradition with roots spanning centuries. This ceremonial practice pays homage to the construction journey and recognizes the achievements of the construction team. Typically, it marks the moment when the final structural beam is hoisted into place, symbolizing the completion of the building's frame. Originating as early as 700 AD in Scandinavia, the topping out ceremony stands as a revered rite among builders, embodying a rich historical tradition.

Before the steel beam is lifted to the highest point of the building, construction crews, students, staff and elected officials will have the chance to inscribe their signatures on the steel beam.

Phase 1 of Malibu's campus plan includes:

Phase 1 of the new Malibu campus plan is designed to support 21st-century learning and provide progressive educational spaces for Malibu students. The building also fits into Malibu's coastal community aesthetics. The new high school will allow for the separation of Malibu Middle School (MMS), excluding some spaces including the pool, theatre and gyms.

Phase 2 of Malibu's campus plan includes:

With Phase 1 of the new high school underway, the District is on track to commencing Phase 2 of the Malibu campus plan, with the focus on completing the middle school facilities. The school will have a new multipurpose room/gymnasium, outdoor eating area and other educational support spaces. Phase 2 will also include a new Olympic-size swimming pool, locker rooms and support areas.

The design for the new MHS received a prestigious award for excellence from the American Institute of Architects, California, in March 2024.

The new MHS building is scheduled to be completed by winter 2026.

This project is funded by Measure M, overwhelmingly approved by Malibu voters in 2018. Construction for phase 1 is estimated to cost \$110 million. NAC architecture is working in collaboration with Koning Eizenberg Architecture and C.W. Driver Companies is the contractor on the project.

A community groundbreaking ceremony took place in October 2023.

Watch video of groundbreaking here:
<https://bit.ly/NewMalibuHSGroundbreaking2023>.

Read more about the new MHS here:
<https://bit.ly/NewMalibuHSGroundbreakingPR2023>.

For more information on upcoming Facility Improvement Projects visit: <https://www.smmusd.org/fip>.

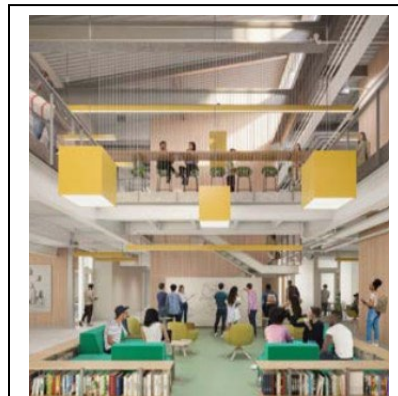
Read more about future campus plans here: <https://bit.ly/NewMalibuHS>.

Written by Esmi McKay, Communications Specialist

###

SANTA MONICA-MALIBU UNIFIED SCHOOL DISTRICT
1717 4th Street, Santa Monica, CA 90401
ph; 310.450.8338
www.smmusd.org

Follow us on Twitter: @SMMUSD Follow us on Instagram: @smmusd_official



Rendering of interior classroom.



Photo Courtesy: Samantha Bravo, Malibu Times