

SMMUSD RECLASSIFICATION CRITERIA

Reclassification is the process whereby a student is reclassified from English Learner (EL) to Fluent English Proficient (RFEP) based on state and district criteria. In order to reclassify, a student must meet ALL of the criteria listed below.

#1: SCORE OF "4" ON ELPAC



The English Language Proficiency Assessment of California (ELPAC) is an exam given to English learners every year. This test evaluates speaking, listening, reading and writing in English. Students must score an overall "4" on ELPAC in order to reclassify. Practice questions for ELPAC are available at: elpac.startingsmarter.org.

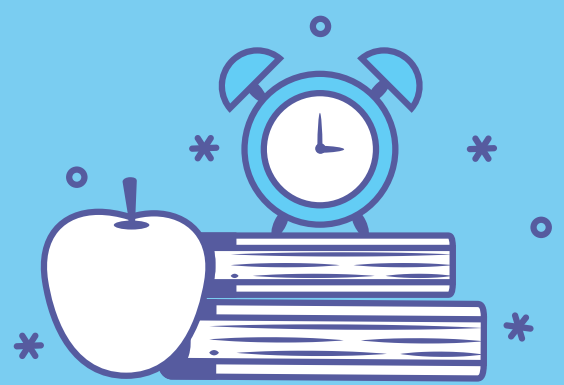


#2: MEETS OR EXCEEDS STANDARDS ON ELA ASSESSMENTS

Students in Grades 4-9, and 12 must receive a score of "3" or "4" on CAASPP ELA. Students in Grade 10 must receive a score of 410 on PSAT. Students in Grade 11 must receive a score of 430 on PSAT. Early elementary students in Grades 1-3 must receive a score of 75%ile or above on the district's two most recent FastBridge aReading assessments.

#3: TEACHER EVALUATION

Teachers evaluate students on speaking, listening, reading and writing tasks in class. Teachers measure how well students express ideas clearly and communicate using academic language. Teachers also evaluate students' performance on classwork to ensure students are "on par" with English only peers.



#4: PARENT/GUARDIAN INPUT



Parents/guardians meet with school administrator and staff to review student data and provide input. Secondary students are encouraged to attend reclassification meetings whenever possible. Reclassified students receive certificates from their school sites to celebrate this academic and linguistic achievement.

SMMUSD has alternate reclassification criteria for students with disabilities. Consult the administrator at your school site or visit www.smmusd.org for more information. SMMUSD believes that the diverse languages and cultures English learners bring to their education are valued resources. SMMUSD students are encouraged to pursue the California State Seal of Biliteracy (SSB). For additional information on the SSB visit www.smmusd.org.