

# Will Rogers Learning Community

## Kindergarten



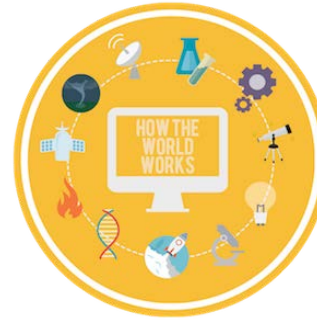
An inquiry into the nature of the self; beliefs and values; personal, physical, mental, social, and spiritual health; human relationships including families, friends, communities, and cultures; rights and responsibilities; what it means to be human.



An inquiry into orientation in place and time; personal histories; homes and journeys; the discoveries, explorations, and migrations of humankind; the relationships between and the interconnectedness of individuals and civilizations, from local and global perspectives.



An inquiry into the ways in which we discover and express ideas, feelings, nature, culture, beliefs, and values; the ways in which we reflect on, extend, and enjoy our creativity; our appreciation for the aesthetic.



An inquiry into the natural world and its laws; the interaction between the natural world (physical and biological) and human societies; how humans use their understanding of scientific principles; and the impact of scientific and technological advances on society and the environment.



An inquiry into the interconnectedness of human-made systems and communities; the structure and function of organizations; societal decision-making; economic activities and their impact on humankind and the environment.



An inquiry into the rights and responsibilities in the struggle to share finite resources with other people and with other living things; communities and the relationship within and between them; access to equal opportunities; peace and conflict resolution.

*September-October*

*October-December*

*January-February*

*March-May*

How do relationships affect individuals and others?

**An inquiry into:**

- Respecting ourselves & others
- Consequences of choices
- Characteristics that develop relationships including 5 senses

**An inquiry into:**

- 

Celebrations and traditions are expressions of shared values and beliefs.

**An inquiry into:**

- Elements, purpose, & types of celebrations & traditions
- Weather affects traditions & celebrations
- Traditions and celebrations teach us about others & History

The interaction of forces and objects explains motion.

**An inquiry into:**

- Pushes and pulls affect motion, speed, and direction
- The effects of design and redesign on motion
- Force and motion in our community

**An inquiry into:**

- 

Living things have needs in order to thrive.

**An inquiry into:**

- Needs of living things
- Relationship between plants/animals and the environment
- Effect of humans on the environment

**Key Concepts:**

- Causation
- Connection
- Function

**Related Concepts:**

- Behavior, relationships, consequences

**Key Concepts:**

- 

**Related Concepts:**

- 

**Key Concepts:**

- Function
- Form
- Perspective

**Related Concepts:**

- Similarities and differences, behavior and communicating beliefs

**Key Concepts:**

- Causation
- Form
- Change

**Related Concepts:**

- Consequences, patterns, properties, sequences, cycle

**Key Concepts:**

- 

**Related Concepts:**

- 

**Key Concepts:**

- Responsibility
- Connection
- Change

**Related Concepts:**

- Interdependence, growth, transformation, initiative, values

# Will Rogers Learning Community

## First Grade



An inquiry into the nature of the self; beliefs and values; personal, physical, mental, social, and spiritual health; human relationships including families, friends, communities, and cultures; rights and responsibilities; what it means to be human.

*August-September*

People have different identities which create diverse communities.

### An inquiry into:

- Identity
- Community
- Diversity

### Key Concepts:

- Form
- Perspective
- Connection

### Related Concepts:

- Relationships, similarities, differences, beliefs



An inquiry into orientation in place and time; personal histories; homes and journeys; the discoveries, explorations, and migrations of humankind; the relationships between and the interconnectedness of individuals and civilizations, from local and global perspectives.

*April-May*

Changes influence how our communities are structured and how they function.

### An inquiry into:

- Visual representations of place
- The structure and function of communities in the past

### Key Concepts:

- Change
- Connection
- Form

### Related Concepts:

- Community, systems, culture



An inquiry into the ways in which we discover and express ideas, feelings, nature, culture, beliefs, and values; the ways in which we reflect on, extend, and enjoy our creativity; our appreciation for the aesthetic.

*October-December*

People communicate information and express themselves through art forms.

### An inquiry into:

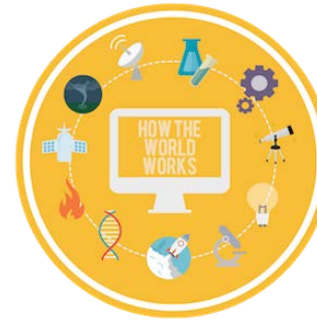
- Production of sound for a purpose
- Production of light for a purpose
- Changing the effects of light and sound

### Key Concepts:

- Causation
- Perspective
- Form

### Related Concepts:

- Patterns, similarities, differences, consequences, opinion



An inquiry into the natural world and its laws; the interaction between the natural world (physical and biological) and human societies; how humans use their understanding of scientific principles; and the impact of scientific and technological advances on society and the environment.

*February-April*

Patterns and cycles are essential to how the world functions and affects sustainability.

### An inquiry into:

- Patterns in space
- Using cycles for sustainability

### Key Concepts:

- Change
- Responsibility
- Form

### Related Concepts:

- Cycles, patterns, initiative



An inquiry into the interconnectedness of human-made systems and communities; the structure and function of organizations; societal decision-making; economic activities and their impact on humankind and the environment.

*September-October*

Communities have structures in place that allow the citizens to understand acceptable conduct.

### An inquiry into:

- Citizenship
- Forms of conduct
- Communicating acceptable conduct

### Key Concepts:

- Function
- Connection
- Responsibility

### Related Concepts:

- Communication, behavior, relationships, rights, initiative



An inquiry into the rights and responsibilities in the struggle to share finite resources with other people and with other living things; communities and the relationship within and between them; access to equal opportunities; peace and conflict resolution.

*January-February*

The structures and functions that living things have and use can be adapted for human purposes.

### An inquiry into:

- Structures and functions of plants and animals.
- Plants and animals and their offspring structures and interactions for survival.
- Humans adapting structure and functions of living things.

### Key Concepts:

- Function
- Responsibility
- Form
- Connection

### Related Concepts:

- Relationships, structure, initiative, behavior, systems

# Will Rogers Learning Community

## Second Grade



An inquiry into the nature of the self; beliefs and values; personal, physical, mental, social, and spiritual health; human relationships including families, friends, communities, and cultures; rights and responsibilities; what it means to be human.

*March-April*

Heroes make a difference in others' lives through their actions and character.

### An inquiry into:

- Identifying heroes
- Impact of heroes
- Characteristics of a hero that influence our beliefs and values

### Key Concepts:

- Responsibility
- Causation
- Perspective

### Related Concepts:

- Impact, beliefs, values, consequences



An inquiry into orientation in place and time; personal histories; homes and journeys; the discoveries, explorations, and migrations of humankind; the relationships between and the interconnectedness of individuals and civilizations, from local and global perspectives.

*September-October*

The histories of families connect the past to the present.

### An inquiry into:

- Enhancing knowledge through visual representations
- Primary and secondary sources
- Similarities and differences in daily life

### Key Concepts:

- Change
- Connection
- Perspective
- Form

### Related Concepts:

- Similarities/differences, consequences, relationships



An inquiry into the ways in which we discover and express ideas, feelings, nature, culture, beliefs, and values; the ways in which we reflect on, extend, and enjoy our creativity; our appreciation for the aesthetic.

*October*

Writing provokes an audience and communicates meaning.

### An inquiry into:

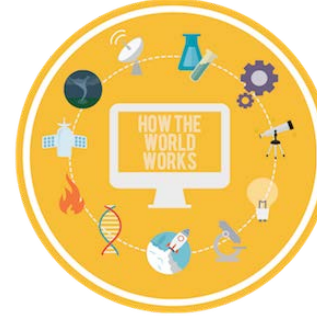
- Writing communicates points of view
- Different genres have different structures that help us understand them
- Writing can teach life lessons

### Key Concepts:

- Function
- Perspective
- Causation

### Related Concepts:

- Role, communication, impact, opinion



An inquiry into the natural world and its laws; the interaction between the natural world (physical and biological) and human societies; how humans use their understanding of scientific principles; and the impact of scientific and technological advances on society and the environment.

*November-December*

Properties of materials and their interactions impact their uses.

### An inquiry into:

- Properties and states of matter
- Uses of materials
- Changes and interactions of materials

### Key Concepts:

- Form
- Function
- Change

### Related Concepts:

- Properties, similarities, differences, role, transformation



An inquiry into the interconnectedness of human-made systems and communities; the structure and function of organizations; societal decision-making; economic activities and their impact on humankind and the environment.

*April-June*

People's needs are met through production and consumption.

### An inquiry into:

- Markets
- Production
- Resources

### Key Concepts:

- Function
- Connection
- Causation

### Related Concepts:

- Systems, consequences, impact, interdependence



An inquiry into the rights and responsibilities in the struggle to share finite resources with other people and with other living things; communities and the relationship within and between them; access to equal opportunities; peace and conflict resolution.

*January-February*

Communities adapt to earth's forces.

### An inquiry into:

- Earth's natural changes
- Water, land, and living things on earth
- Human adaptation to Earth's forces

### Key Concepts:

- Form
- Causation
- Responsibility

### Related Concepts:

- Initiative, properties, similarities, differences, consequences



# Will Rogers Learning Community

## Third Grade



An inquiry into the nature of the self; beliefs and values; personal, physical, mental, social, and spiritual health; human relationships including families, friends, communities, and cultures; rights and responsibilities; what it means to be human.

*August-September*

People belong to different communities.

### An inquiry into:

- Beliefs and values
- Rights and responsibilities
- Human relationships

### Key Concepts:

- Perspective
- Connection
- Function

### Related Concepts:

- Role, citizenship, beliefs, rights & values



An inquiry into orientation in place and time; personal histories; homes and journeys; the discoveries, explorations, and migrations of humankind; the relationships between and the interconnectedness of individuals and civilizations, from local and global perspectives.

*March-April*

Cultures are influenced by their environment.

### An inquiry into:

- Visual representations
- Customs and traditions
- Geography and climate

### Key Concepts:

- Function
- Perspective
- Form

### Related Concepts:

- Communication, pattern, beliefs, structure



An inquiry into the ways in which we discover and express ideas, feelings, nature, culture, beliefs, and values; the ways in which we reflect on, extend, and enjoy our creativity; our appreciation for the aesthetic.

*April-June*

Folktales are both a reflection and a product of a society.

### An inquiry into:

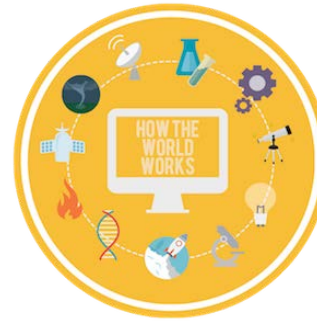
- Stories can teach lessons
- Stories reflect the values of a society
- Stories can be adapted for new impact

### Key Concepts:

- Causation
- Change

### Related Concepts:

- Consequences, transformation, patterns



An inquiry into the natural world and its laws; the interaction between the natural world (physical and biological) and human societies; how humans use their understanding of scientific principles; and the impact of scientific and technological advances on society and the environment.

*January-February*

There are forces of nature that affect life.

### An inquiry into:

- Weather and climate
- Balanced and unbalanced forces
- Predicting patterns

### Key Concepts:

- Causation
- Responsibility
- Form

### Related Concepts:

- Pattern, Impact, Initiative



An inquiry into the interconnectedness of human-made systems and communities; the structure and function of organizations; societal decision-making; economic activities and their impact on humankind and the environment.

*September-November*

People organize themselves into systems of government.

### An inquiry into:

- Systems of government
- Establishing rules and laws
- Contributions to local and national groups

### Key Concepts:

- Connection
- Responsibility
- Function

### Related Concepts:

- Citizenship, role, systems



An inquiry into the rights and responsibilities in the struggle to share finite resources with other people and with other living things; communities and the relationship within and between them; access to equal opportunities; peace and conflict resolution.

*November-December*

Organisms and their environments have an impact on each other.

### An inquiry into:

- Life cycles
- Elements of survival
- Traits and variations of organisms

### Key Concepts:

- Connection
- Change
- Responsibility

### Related Concepts:

- Interdependence, initiative, cycles, adaptation

# Will Rogers Learning Community

## Fourth Grade



An inquiry into the nature of the self; beliefs and values; personal, physical, mental, social, and spiritual health; human relationships including families, friends, communities, and cultures; rights and responsibilities; what it means to be human.

*August-October*

Human choices impact their health and well-being.

### An inquiry into:

- Structure and function of human body systems
- Choices that can impact body systems

### Key Concepts:

- Connection
- Form
- Responsibility

### Related Concepts:

- Properties, interdependence, initiative, values



An inquiry into orientation in place and time; personal histories; homes and journeys; the discoveries, explorations, and migrations of humankind; the relationships between and the interconnectedness of individuals and civilizations, from local and global perspectives.

*January-February*

Power transforms communities and cultures.

### An inquiry into:

- Impact of migration (geographical, religious, achievements, political, economic, society, arts, intellectual)
- Methods and reasons (power and resources)
- Bias and injustice (perspective)

### Key Concepts:

- Causation
- Perspective
- Responsibility

### Related Concepts:

- Consequences, impact, beliefs, prejudice, rights, justice



An inquiry into the ways in which we discover and express ideas, feelings, nature, culture, beliefs, and values; the ways in which we reflect on, extend, and enjoy our creativity; our appreciation for the aesthetic.

*November-December*

Coding is often communicated through waves.

### An inquiry into:

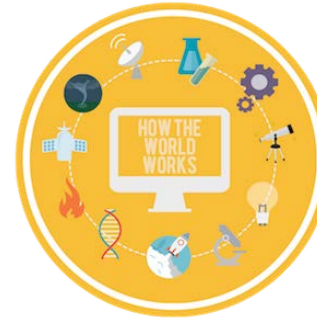
- Waves have properties
- Coding is communication
- Coding can connect people

### Key Concepts:

- Form
- Function
- Connection

### Related Concepts:

- Properties, communication, networks



An inquiry into the natural world and its laws; the interaction between the natural world (physical and biological) and human societies; how humans use their understanding of scientific principles; and the impact of scientific and technological advances on society and the environment.

*October-November*

Geological events affect the earth.

### An inquiry into:

- Slow Forces
- Rapid Forces
- Impact of these forces

### Key Concepts:

- Causation
- Change
- Form

### Related Concepts:

- Impact, consequences, transformation, similarities, differences, properties



An inquiry into the interconnectedness of human-made systems and communities; the structure and function of organizations; societal decision-making; economic activities and their impact on humankind and the environment.

*February-April*

Resources inform economic decisions.

### An inquiry into:

- Conflict among groups
- Economic choices and outcomes
- Access to resources

### Key Concepts:

- Connection
- Perspective
- Responsibility

### Related Concepts:

- Citizenship, rights, networks, systems, prejudice, subjectivity



An inquiry into the rights and responsibilities in the struggle to share finite resources with other people and with other living things; communities and the relationship within and between them; access to equal opportunities; peace and conflict resolution.

*April-June*

Energy is needed, used, and transferred in many forms.

### An inquiry into:

- Types of Energy
- Needs and availability of energy
- Transfer of energy

### Key Concepts:

- Causation
- Perspective
- Change

### Related Concepts:

- Consequences, pattern, transformation

# Will Rogers Learning Community

## Fifth Grade



An inquiry into the nature of the self; beliefs and values; personal, physical, mental, social, and spiritual health; human relationships including families, friends, communities, and cultures; rights and responsibilities; what it means to be human.

*August-September*

Societies share customs, religions, and traditions that shape them.

### An inquiry into:

- Societies in the United States
- Customs, traditions, religions
- Agreements between and within communities

### Key Concepts:

- Form
- Connection
- Perspective

### Related Concepts:

- Beliefs, relationships, similarities and differences



An inquiry into orientation in place and time; personal histories; homes and journeys; the discoveries, explorations, and migrations of humankind; the relationships between and the interconnectedness of individuals and civilizations, from local and global perspectives.

*November-December*

Colonization occurs because of challenges, creates opportunities, and results in consequences.

### An inquiry into:

- Challenges
- Opportunities
- Consequences

### Key Concepts:

- Form
- Causation
- Responsibility

### Related Concepts:

- Pattern, initiative, impact, relationship



An inquiry into the ways in which we discover and express ideas, feelings, nature, culture, beliefs, and values; the ways in which we reflect on, extend, and enjoy our creativity; our appreciation for the aesthetic.

*January-February*

People express their ideas, feelings, and beliefs/values through their actions.

### An inquiry into:

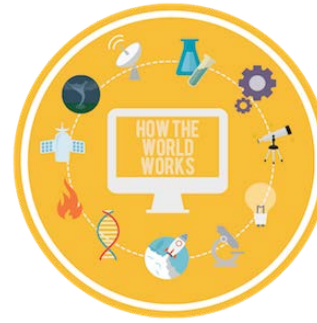
- Civil rights movements in our present and past
- Determining actions
- Examining the impact

### Key Concepts:

- Change
- Perspective
- Responsibility

### Related Concepts:

- Sequences, subjectivity, prejudice, justice



An inquiry into the natural world and its laws; the interaction between the natural world (physical and biological) and human societies; how humans use their understanding of scientific principles; and the impact of scientific and technological advances on society and the environment.

*March-April*

Living and nonliving forms are interconnected and require energy to transfer matter.

### An inquiry into:

- Interconnectedness of living and nonliving forms
- Properties and changes in matter
- Energy and matter move through ecosystems

### Key Concepts:

- Change
- Connection
- Form

### Related Concepts:

- Systems, properties



An inquiry into the interconnectedness of human-made systems and communities; the structure and function of organizations; societal decision-making; economic activities and their impact on humankind and the environment.

*October-November*

Humans create organizational systems to meet the needs of the society.

### An inquiry into:

- Structure and function of organizational systems
- Impact of different groups on organizations
- Events that lead to change

### Key Concepts:

- Function
- Causation
- Perspective

### Related Concepts:

- Role, sequences, consequences, subjectivity



An inquiry into the rights and responsibilities in the struggle to share finite resources with other people and with other living things; communities and the relationship within and between them; access to equal opportunities; peace and conflict resolution.

*February-March*

Humans impact the earth's spheres and in turn, the earth's spheres impact humans.

### An inquiry into:

- Issues where humans impact the Earth's spheres
- Develop questions and investigations to understand how humans impact the Earth's spheres
- Compare ideas and perspectives to formulate evidence-based arguments

### Key Concepts:

- Connection
- Responsibility
- Function

### Related Concepts:

- Role, system, rights, initiative