

June 21, 2021

# Santa Monica-Malibu Unified School District

Historic Resource Inventory | Community Meeting

Lincoln Middle School



Architectural  
Resources Group



# Meeting Agenda

1. Introductions
2. Project Overview
3. Process
4. School Overview
5. Open Discussion



# Santa Monica Malibu Unified Historic Resources Inventories

SMMUSD Board Adopted BP/AR 7133 – creates policy and procedures for treatment of potential historic resources

- Prepare Historic Resources Inventories for each campus
- Identify historic resources on District property prior to planning and design of new projects
- Expand educational opportunities about the history of SMMUSD facilities for students and communities
- Incorporating re-use and rehabilitation in planning efforts when it meets educational goals
- Commits the District to incorporating *Secretary of the Interior's Standards for the Treatment of Historic Properties with Guidelines for Rehabilitation*
- Informs future planning, design and environmental review



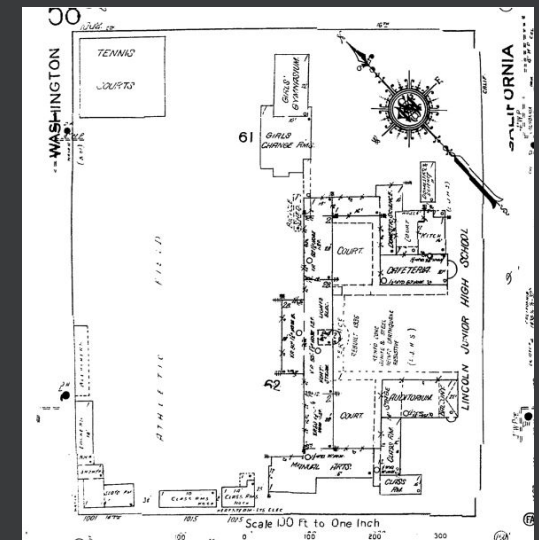
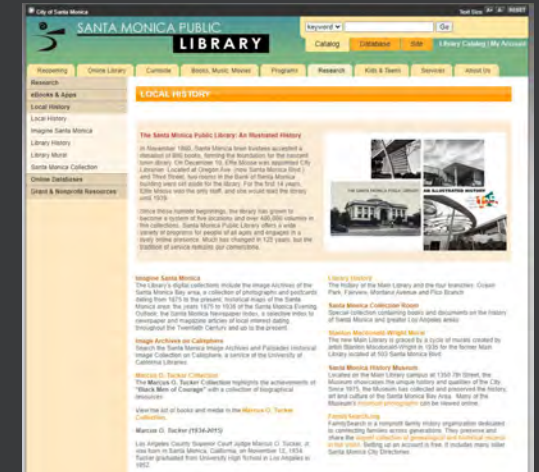
# Process

## For Each Campus:

- Review City of Santa Monica Historic Resources Inventory (HRI)
- Historic context development
- Additional background research
- Field inspections and integrity analysis
- Survey report
  - Inventory of historic resources
  - Character-defining features

## Over the Course of the Project:

- Collaboration between firms (ARG, HRG)
- Opportunities for public input/comment



# Process (cont.)

## Assessments will include:

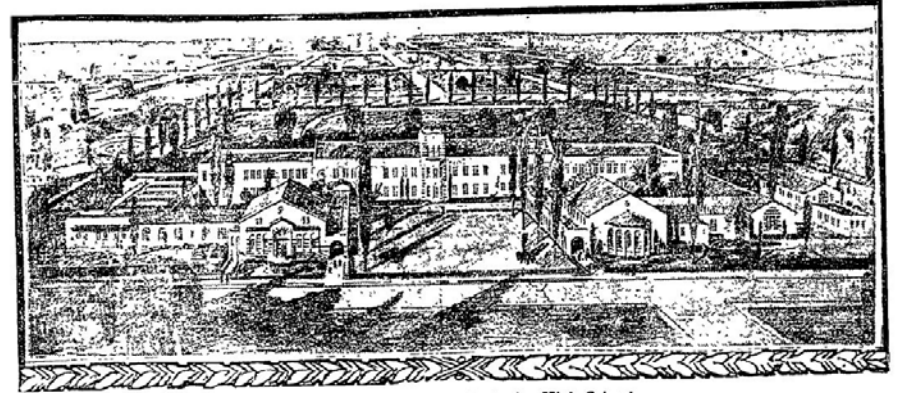
- Buildings
- Site planning and landscape features
- Murals and artwork
- Other aspects of the built environment



# School Overview

- Originally constructed 1922-1924
- Designed in the Italian Renaissance Revival style by architects Allison and Allison
- Damaged in the 1933 Long Beach Earthquake

## *Will Erect Large School Building at Santa Monica*



The Proposed New Lincoln Junior High School  
The institution when complete will represent an expenditure of approximately \$150,000. The central wing of the school will be erected at once, the other units to be built afterward. Allison & Allison are the architects.

*Source: Los Angeles Times*



*Source: UCLA Islandora Repository*



# School Overview (cont.)

- Extensively rehabilitated by architects Parkinson and Parkinson in 1936
- New buildings and facilities added throughout the post-World War II period
- New library building constructed 2013





# Open Discussion

We'd love to hear more about what topics are important to you!



*Source: Google Maps*