

June 21, 2021

# Santa Monica-Malibu Unified School District

Historic Resource Inventory | Community Meeting

Grant Elementary School



Architectural  
Resources Group



# Meeting Agenda

1. Introductions
2. Project Overview
3. Process
4. School Overview
5. Open Discussion



# Santa Monica Malibu Unified Historic Resources Inventories

SMMUSD Board Adopted BP/AR 7133 – creates policy and procedures for treatment of potential historic resources

- Prepare Historic Resources Inventories for each campus
- Identify historic resources on District property prior to planning and design of new projects
- Expand educational opportunities about the history of SMMUSD facilities for students and communities
- Incorporating re-use and rehabilitation in planning efforts when it meets educational goals
- Commits the District to incorporating *Secretary of the Interior's Standards for the Treatment of Historic Properties with Guidelines for Rehabilitation*
- Informs future planning, design and environmental review

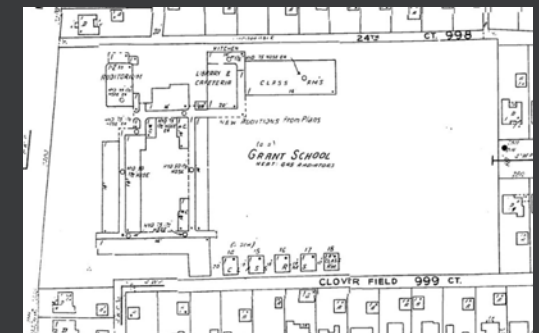
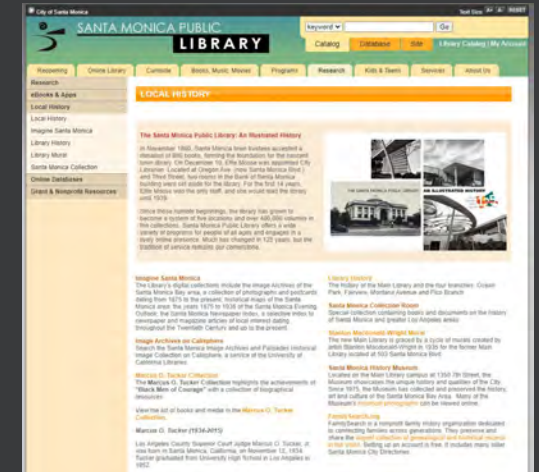
# Process

### For Each Campus:

- Review City of Santa Monica Historic Resources Inventory (HRI)
- Historic context development as needed
- Background research as needed
- Field inspections and integrity analysis
- Survey report
  - Inventory of historic resources
  - Character-defining features

## Over the Course of the Project:

- Collaboration between firms (ARG, HRG)
- Opportunities for public input/comment





# Process (cont.)

## Assessments will include:

- Buildings
- Site planning and landscape features
- Murals and artwork
- Other aspects of the built environment



# School Overview

- Original Grant School located at the present-day site of Virginia Park
- Current school constructed in 1936
- Substantial additions made in 1940, 1947, 1954



*Source: Santa Monica Public Library*

## Coast City School Contract Let

Contract for construction of a building at the Grant school site, Santa Monica, has been awarded at \$43,820 to Jones Brothers by the Santa Monica Board of Education.

The architectural firm of John and Donald B. Parkinson designed the structure.

*Source: Los Angeles Times*

## School Overview (cont.)

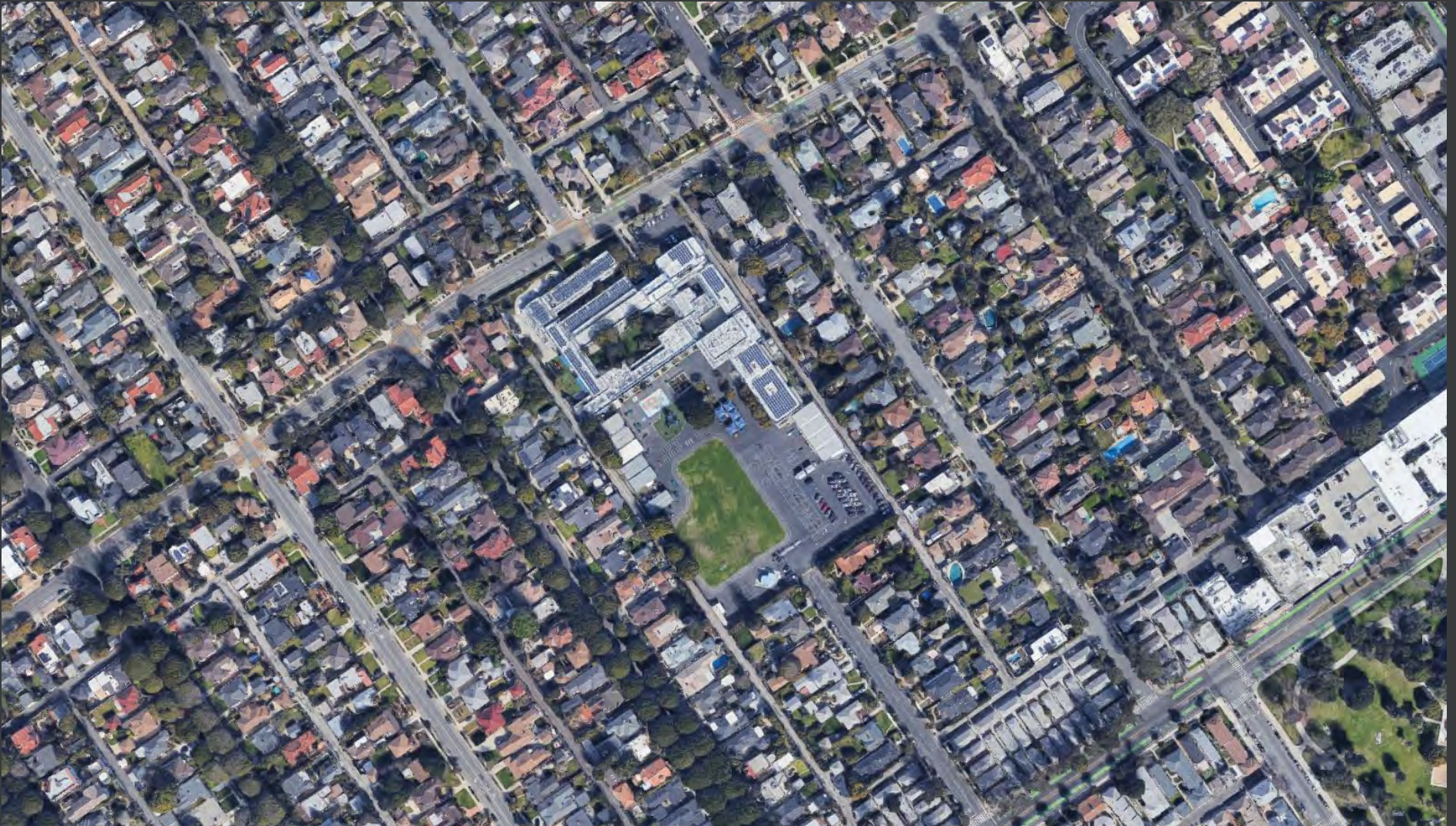
- Buildings designed in the Moderne and Modern styles by architects Donald Parkinson, Joe Estep, and Pierre Clayssens
- Modular and portable buildings added in subsequent years





# Open Discussion

We'd love to hear more about what topics are important to you!



Source: Google Maps