



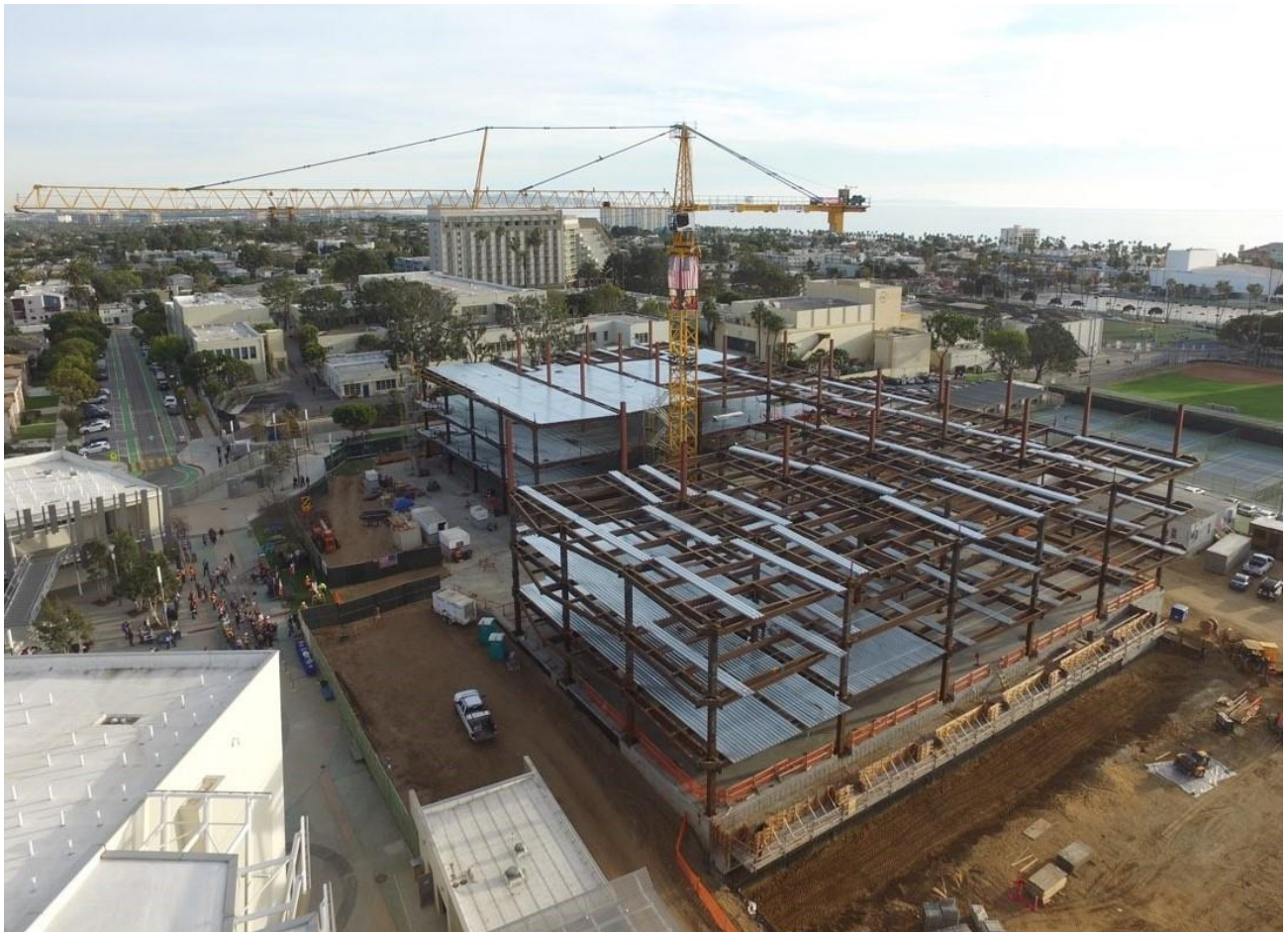
FACILITY IMPROVEMENT PROJECTS Progress Report | February 11, 2020

CONSTRUCTION UPDATE

Samohi

Discovery

The Discovery Building, part of a planned redesign of the entire Samohi campus, includes 288 parking spaces, 38 classrooms, decentralized administrative offices, seminar rooms, common areas, a rooftop STEAM classroom, indoor and outdoor eating areas, solar panels, an Olympic-size swimming pool, and a full-service kitchen that will serve the entire district.



The Discovery Building site as seen from a drone overlooking the topping-off ceremony held on Jan. 30 to mark the last beam of structural steel being placed.



School Board Vice-President Laurie Lieberman signs the final beam to be placed atop the Discovery Building. Board members, teachers, staff, parents, construction workers and students all joined the traditional ceremony, which saw the beam, a seedling tree and a Samohi Vikings flag hoisted to the beam's final location.

- The structural steel subcontractor finished erecting steel. Bolting and welding will continue until mid-February.
- Deck sheeting is being installed and work on preparing the first concrete pour is progressing.
- The first of six concrete deck pours is scheduled for Feb. 18.
- Permanent shoring is taking place next to the utility building. Work on the pool can begin once that is complete.

HVAC

- The new HVAC systems in the Music, Admin, English, Business and Art Buildings, and Barnum Hall, are fully functional.

- Screens are being installed around the mechanical equipment and punch list items are being addressed.
- All areas of the campus, with the exception of the buildings scheduled for demolition in the next couple years, now have air conditioning/ventilation.

OTHER PROJECTS

Electronic Locks – Pilot Project

- The majority of work is now complete.
- Optimization of the system continues to develop best practices that will be used on other district campuses.

Michigan Fence and Gate

- The concrete retaining wall has been poured and fencing has been installed.
- The gate motor will be installed next week.
- The gate itself is scheduled to be installed in late February.
- When the fence between the pedestrian entrance at Michigan and English is complete, Samohi's decorative fencing will extend the school's identity from Fifth Street near the DoubleTree all the way around to Pico and the English Building.

Cameras

- The cameras and associated cabling are largely complete. One camera remains to be installed, and optimization of each camera's view continues.
- Some low-voltage switches need to be installed before the system is fully functional. Work should be complete by March.

John Adams Middle School

Performing Arts Center

When complete, the center will house a 750-seat state-of-the-art theater, dedicated rehearsal spaces and more.



- Foundation rebar work is complete.
- Fine grading and compaction for the Rehearsal Building began Wednesday.
- Concrete Masonry Unit (CMU) blocks are being installed at back of house. Masonry subcontractor is working 10-hour days and possibly Saturday.
- Scaffolds are erected on the Pearl Street side of the campus.
- Cast-in-place wall at proscenium opening is complete. Rebar for third lift is being installed.
- Electrical / telecom: Installation of underground conduits and sleeves is in progress.
- Plumbing: Underground vent and sewer lines are being placed for the back of the house and the lobby.
- Waterproofing and structural backfill are complete, pending elevator walls.
- Framing of the forms for part of the seating area is underway. Metal decking will follow.
- Cast-in-place wall near third lift is scheduled to be poured in mid-month.

JAMS Heating, Ventilation and Air Conditioning & Fire Alarm (Phase 1)

- The new fire alarm system has been tested and is now being used.
- With the new transformer in use, SCE has removed the old one.
- Equipment associated with the previous fire alarm system has been removed.

JAMS HVAC (Phase 2)

- A condenser unit cage and a new furnace were installed for Rooms 50-53.
- Installation of conduit for new HVAC systems is in progress at the cafeteria and gym.
- New HVAC for Rooms 80-88 will be complete by mid-February.



Malibu Middle and High School

The new middle school building is in full use. The new Library, Classroom and Administration Building will be complete in the fall of 2020. The district is in the process of hiring an architecture firm to design Phase 1 of the Board-approved Malibu Campus Plan, which will eventually bring a new high school building, a performing arts center to be shared by middle and high schools, improved traffic flow on Morning View Drive and more.



New Library, Classroom & Administration Building

Segment A

- Work continues to waterproof exterior walkway areas on the courtyard level.
- Completed 50% of concrete topping slab on courtyard level. Remaining 50% in progress.
- Installation is ongoing of mechanical, electrical, plumbing and fire sprinkler installation on courtyard level.
- Metal stud installation expanding throughout the courtyard level (**shown above**).

- Roof level continue with cutting holes for new skylight(s) and framing in the opening prior to seal coating roof surface (**shown below**).



Segment B

- Started drywall placement on lower level in mechanical, electrical and equipment rooms in preparation for new equipment.
- Mechanical, electrical, plumbing and fire sprinkler installation continues on the lower and courtyard levels.
- Metal stud installation continuing on courtyard level.

Middle School Building

- Punchlist items are 95% complete
- 90% of testing is complete on fire alarm system. Remaining work scheduled for completion around Feb. 17.
- Once adjacent site work is complete, work will begin to finish foundations around the column supporting the elevator roof.
- Seal coating to ensure protection against water intrusion is complete on roof.
- Excavation continues on footing foundations for placement of west side sun screens and exterior stairs.

Malibu Elementary

- Interim Housing Project declared substantially complete on Feb. 3.
- Once the design team receives county and city approval for the fire and domestic water point of connection, the work will be completed under a new purchase order or informal-bid contract. Once that is finished, a DSA certificate of completion will be sought.

Franklin Elementary

The end is near for the 18-month modernization effort for Franklin is near. All updates and improvements to campus, rooms and technology that were planned are fully or nearly complete.

- The installation of HVAC units in all rooms, new windows and doors, painting, and upgrade of the fire alarm system is nearly complete.
- Non-structural trim and fascia work remain for new windows on the north side of Rooms 15-20.
- Panic hardware will be installed at the kindergarten playground gate.
- Substantial completion will be declared soon and close-out will begin.

McKinley Elementary

The end is near for the 18-month modernization effort for McKinley.



- The window installation for Rooms 107-110 is complete **(shown above)**.
- The preparation for the new windows in the main building and the auditorium has started.
- The next step will be to remove the existing main building and auditorium windows, which will be replaced immediately with new ones.
- Final items under completion are: The newly created counselor's office, an exterior door to the rear classroom building, five HVAC units, and fencing/enclosures around the ground-mounted units.
- All work is scheduled to be complete by the end of spring break.

Webster Elementary

- All contract work for the playground upgrade project is completed. The next step is to obtain a DSA Certification.

UPCOMING PROJECTS

Grant Elementary

Modernization project, scheduled for this summer. It will include:

- Installation of heating, ventilation, and air conditioning throughout the campus;
- Fire Alarm Safety upgrade;
- Accessibility upgrades; and
- Modified entrance to campus. This will improve safety & security for the campus while respecting the historic entrance.

John Muir Elementary/ Santa Monica Alternative School House

Modernization project, scheduled for this summer. It will include:

- Installation of heating, ventilation, and air conditioning throughout the campus;
- Fire Alarm Safety upgrade;
- Replaced flooring, interior paint, exterior paint trim;
- Added shade structures; and
- Accessibility upgrades.

Webster Elementary

Heating, ventilation, and air conditioning project, scheduled for this summer. HVAC will be installed and upgraded across the campus.

Malibu Elementary

Both the main playground and the kindergarten playground will be upgraded and modernized this summer.

Edison Language Academy

Solar power project will occur in 2020. This will add photovoltaic canopies and shade structures to the campus. This is the last elementary school to receive solar power.

Lincoln Middle School

HVAC/Modernization Project, scheduled to begin this summer. This will be an 18-month project. It will include:

- Installation of HVAC throughout the campus.
- Fire Alarm Safety upgrade.
- Window/Paint/Floor/Door Modernization of the 300s building, including new ADA accessible restrooms for the special education suite.
- Accessibility upgrades, including adding an elevator to access the second floor of the 300s building.

Michelle and Barack Obama Center

Modernization project continued, scheduled for this summer. This project will complete the modernization of rooms 16 & 17 and the transformation of the preschool classrooms to make spaces for the Personalized Project-Based Learning cohort. It will include:

- Installation of HVAC.
- New flooring, interior paint, exterior paint trim.

Santa Monica High School

In addition to the Discovery Building project, there will be a solar power project to add photovoltaic panels and a battery backup system to the Innovation Building in 2020. The addition of the solar power will be the next step toward making the campus more sustainable and resilient.

Malibu Middle & High School

Interim PCB abatement project will be scheduled for the summer. This will include:

- Encapsulation of and replacement of the floors in the orchestra room and darkroom.
- Replacement of four doors in the kitchen.
- Replacement of one door in the Old Gym.