

**PCB REMOVAL/REMEDIATION PROJECT RECORD**  
**Malibu High School – Buildings H and J**  
May 4, 2021

Prepared For:

**Santa Monica Malibu Unified School District**  
Carey Upton  
2828 4<sup>th</sup> Street  
Santa Monica, California 90405

**N|V|5**

NV5 – Alta Environmental  
3777 Long Beach Blvd. Annex Building  
Long Beach, CA 90807  
Phone: 800.777.0605

444720-0009592.01

## EXECUTIVE SUMMARY

At the request of the Santa Monica-Malibu Unified School District (District), Alta Environmental DBA NV5 (NV5) conducted monitoring services during the removal of polychlorinated biphenyl (PCB) impacted building materials (caulking) from Building H Rooms 662, and 666 and Building J Rooms 704, 705, 714, and 722 within Malibu High School, located at 30215 Morning Drive, Malibu, California 90265. The removal activities were conducted in accordance with the USEPA-approved *Notification of New PCB-impacted Building Materials at Malibu High School* dated August 19, 2020.

During this project, all identified PCB Bulk Product Waste (door, window, and vent caulking) was removed by the District's removal contractor Miller Environmental. Particulate air monitoring conducted during the removal/remediation activities indicated compliance with the action level established for this project. There were no documented exceedances.

Following the removal of identified PCB-containing materials, NV5 conducted initial post-removal surface wipe sampling prior to removal of the work area containment. The results of the initial wipe samples were reported below the USEPA Region IX health-based benchmark.

Following receipt of acceptable initial wipe sample results, the work area containments were removed. Final confirmation surface wipe and air samples were collected following restoration of the work areas and prior to re-occupancy. The results of this sampling met the USEPA re-occupancy criteria.

## TABLE OF CONTENTS

<b>1.0</b>	<b>PROJECT BACKGROUND</b> .....	<b>1</b>
<b>2.0</b>	<b>NV5 PROJECT SCOPE OF SERVICES</b> .....	<b>1</b>
<b>3.0</b>	<b>CONTRACTOR PERFORMED REMOVAL ACTIVITIES</b> .....	<b>1</b>
3.1	REGULATED WORK AREA .....	1
3.2	ENGINEERING CONTROLS.....	2
3.3	BUILDING H .....	2
3.4	BUILDING J.....	2
3.5	POST REMEDIATION CONTAINMENT INSPECTION AND CLEARANCE WIPE SAMPLING .....	3
3.5.1	Building H.....	3
3.5.2	Building J.....	3
3.6	CONFIRMATION AIR AND WIPE SAMPLING PRIOR TO RE-OCCUPANCY.....	4
<b>4.0</b>	<b>WORKER PROTECTION</b> .....	<b>4</b>
<b>5.0</b>	<b>WORKER DECONTAMINATION</b> .....	<b>4</b>
<b>6.0</b>	<b>EQUIPMENT DECONTAMINATION</b> .....	<b>4</b>
<b>7.0</b>	<b>QUALITY CONTROL</b> .....	<b>4</b>
<b>8.0</b>	<b>WASTE MANAGEMENT AND DISPOSAL</b> .....	<b>5</b>
<b>9.0</b>	<b>PROJECT SUMMARY</b> .....	<b>5</b>
<b>10.0</b>	<b>DISCLAIMER</b> .....	<b>5</b>
<b>11.0</b>	<b>SIGNATORY</b> .....	<b>6</b>

## APPENDICES

Appendix A: PCB Removal Locations

Appendix B: Photo Documentation

Appendix C: Post Removal Confirmation Sampling Results

Appendix D: Laboratory Reports

## 1.0 PROJECT BACKGROUND

Previous investigations have identified polychlorinated biphenyl (PCB) impacted building materials within select areas of Building H and Building J at Malibu Middle and High School, located at 30215 Morning Drive, Malibu, California (Site). This report details monitoring services performed at the request of the Santa Monica-Malibu Unified School District (District), by Alta Environmental DBA NV5 (NV5) during the removal of door, window, and vent caulking materials containing polychlorinated biphenyls (PCBs) performed by the District's removal contractor, Miller Environmental (Miller or Contractor) from Building H Rooms 662, and 666 and Building J Rooms 704, 705, 714, and 722.

Appendix A provides figures detailing the locations of removed building materials.

## 2.0 NV5 PROJECT SCOPE OF SERVICES

NV5 provided the following services during the removal/remediation:

- Contractor observation to document project activities, including the Contractor's adherence to the requirements of the USEPA-approved *Notification of New PCB-impacted Building Materials* at Malibu High School dated August 19, 2020 (herein identified as the "Work Plan");
- Final visual inspection confirming that applicable PCB material and associated dust and debris was removed; and
- Post-removal confirmation wipe sampling.

## 3.0 CONTRACTOR PERFORMED REMOVAL ACTIVITIES

As discussed in the Work Plan, previous investigations of Building H and of Building J have identified building materials which contain PCB concentrations greater than 50 ppm. These materials were identified in wall joint caulking associated with two exterior wall vent assemblies located in the second-story mechanical room above Building H Rooms 662 and 666, and in wall joint caulking associated the exterior wall vent assembly located in Room 714, the large window located in the western exterior wall that spans Rooms 704 and 705, and the large window in the eastern exterior wall of Room 722. An overview of activities performed by Miller during removal and abatement of these materials is provided in the following sections.

All PCB removal activities and waste segregation, storage, and disposal were conducted in accordance with the Work Plan.

### 3.1 REGULATED WORK AREA

Regulated work areas were established at each of the PCB removal locations in Building H and Building J prior to the beginning of remediation activities. Physical barriers and warning signs were installed at the work area perimeters to limit access to authorized persons conducting or monitoring the remediation work. The PCB removal areas were further isolated by installing additional containment systems consisting of critical and perimeter barriers constructed with fire retardant polyethylene sheeting.

## 3.2 ENGINEERING CONTROLS

The PCB removal area containment systems were constructed to minimize the potential for airborne dust to migrate outside the regulated work areas. Negative air pressures were established within each containment using high-efficiency particulate air (HEPA) filtering fan units to maintain a minimum air pressure differential of -0.02 inches/water column. The containment area pressure differential was continuously monitored during PCB removal activities using a data-logging manometer. Additional engineering controls include the use of HEPA filter-equipped vacuums within the containment systems to collect dust generated during the remediation activities.

## 3.3 BUILDING H

Once the work area containment system was properly established at Building H, Miller detached each of the metal wall vent assemblies from the metal wall penetration frames and removed all visible caulking material using hand tools. In addition, Miller cleaned the metal vent assemblies and associated metal wall penetration frames by wet-wiping the surfaces with hexane to remove any remaining residue.

Following removal activities, Miller and NV5 field personnel performed a final visual inspection of the containment areas. Once the areas were found to be acceptably free of PCB-impacted material (including dust and other debris), NV5 collected post-remediation confirmation samples from the vent assemblies, the wall penetration frames and from the containment floor.

Following notification that the laboratory sample results were reported below action levels, the containment systems were removed, and Miller installed metal cladding extending to a minimum distance of 16 inches around the wall openings to eliminate potential direct exposure to the underlying substrate. Miller then reinstalled the cleaned vent assemblies and completed the build-back of the work area. Photo documentation of the vent cladding is presented in Appendix B.

Additional details of the Building H post-remediation confirmation sampling are discussed in Section 3.5.1

## 3.4 BUILDING J

Following proper construction of each work area containment, Miller began removal activities at Building J. Each of the window assemblies (Rooms 704/705 and 722) and the exterior vent assembly (Room 714) were detached and removed from the metal wall penetration frames to facilitate cleaning. Miller then removed all visible caulking material adhered to the removed assemblies and their associated metal wall frames using hand tools. Following removal of the bulk caulking material, the metal assemblies and metal wall penetration frames were further cleaned by wet-wiping all potentially impacted surfaces with hexane to remove any remaining residue.

Following removal activities, Miller and NV5 field personnel performed a final visual inspection of the containment areas. Once the areas were found to be acceptably free of PCB-impacted material (including dust and other debris), post-remediation confirmation samples were collected from the window and vent assemblies, the wall penetration frames and from the containment floor.

Following review of the sample results reported by the laboratory, the containment systems were removed and Miller installed metal cladding extending to a minimum distance of 16 inches around the wall openings to eliminate potential direct exposure to the underlying substrate. Miller then reinstalled the cleaned window assemblies and completed the build-back of the work area. It should be noted, however, that the exterior wall vent from Room 714 was unable to be cleaned sufficiently and therefore it was replaced with a new unit. Photo documentation of the cladding is presented in Appendix B.

Additional details of the Building J post-remediation confirmation sampling are discussed in Section 3.5.2

### 3.5 POST REMEDIATION CONTAINMENT INSPECTION AND CLEARANCE WIPE SAMPLING

Following the removal of identified PCB-containing materials, NV5 and Miller staff conducted a visual inspection of all containment areas. After the containment areas were deemed acceptable, post-removal surface wipe sampling was conducted prior to removal of the work area containments.

The wipe samples were collected on a hexane-wetted gauze pad using the Standard Wipe Test method described in 40 CFR 761.123. Following collection, the post-remediation wipe samples (including blanks) were submitted for analysis to American Environmental Testing Laboratory, a California-accredited environmental testing laboratory. All surface wipe samples were prepared for analysis by the laboratory using EPA Method 3540 (Soxhlet extraction) and analyzed for PCBs using EPA Method TO-10A.

Appendix B presents a tabulated overview of the sample results and Appendix C presents copies of the laboratory reports.

#### 3.5.1 Building H

On September 22, 2020, a total of five surface wipe samples were collected from the containment floor, the wall openings, and the vent assemblies located in the 2<sup>nd</sup>-story mechanical room above Rooms 662 and 666. Upon laboratory notification that the wipe samples contained PCB concentrations below the EPA Region IX health-based benchmark of 1.0 microgram ( $\mu\text{g}$ ) per 100 square centimeters ( $\text{cm}^2$ ), the remediation contractor was authorized to remove the containment systems and begin build-back of the work areas (Section 3.4.3).

#### 3.5.2 Building J

On September 18, 2020, three surface wipe samples were collected from the containment floor, the wall openings, and the removed window and vent assemblies within each of the work areas (Rooms 704 and 705, Room 714, and Room 722). While the wipe sample results for the containment area floors and the wall penetrations were reported below  $1\mu\text{g}/100\text{cm}^2$ , the reported PCB concentrations for the window and vent assemblies in these rooms were reported above action levels and therefore required additional cleaning. Following one additional round of cleaning and sampling for the Room 722 window assembly (September 25, 2020) and three additional rounds of cleaning for the Room 704/705 window assembly (September 25, September 30 and October 10, 2020), surface wipe

samples were reported below the  $1\mu\text{g}/100\text{cm}^2$  concentration benchmark. However, after two rounds of cleaning and sampling at the Room 714 work area (September 30 and October 10, 2020), the vent assembly surface wipe sample results remained above  $1\mu\text{g}/100\text{cm}^2$ . Therefore, a new vent of similar construction and size was installed to replacement for the original one which was unable to be cleaned sufficiently. The original Room 714 vent assembly, which could not be sufficiently cleaned of the original PCB-impacted bulk product caulking material, was properly packaged and disposed offsite as Bulk Product Waste.

Following the additional cleaning activities and procurement of the new replacement vent for Room 714, each of the three work area containments were released to the contractor for teardown and build-back.

### 3.6 CONFIRMATION AIR AND WIPE SAMPLING PRIOR TO RE-OCCUPANCY

In accordance with the Work Plan, re-occupancy confirmation air and wipe sampling was not required due to all interior PCB removal locations being removed from service and all exterior locations being encapsulated.

## 4.0 WORKER PROTECTION

Personal protective equipment utilized by workers engaged in the PCB remediation activities included NIOSH-approved half-face air-purifying respirators with HEPA (P100) cartridges, disposable non-porous protective overalls, and eye, hand, foot and hearing protection devices.

## 5.0 WORKER DECONTAMINATION

A three-stage worker decontamination unit, integral to each work area containment, was placed at the entrance to the regulated work area and included a “dirty” room, shower room and a clean room. The decontamination facility was equipped with soap and towels.

## 6.0 EQUIPMENT DECONTAMINATION

Equipment used for PCB removal/remediation was wet wiped and vacuumed with HEPA-equipped vacuums and visually inspected prior to removal from the work areas. In addition, the HEPA filters from all equipment, vacuums and negative air blowers were removed inside each containment, and the interior of the unit (filter compartment) was wet wiped prior to removal from the containment systems. Following decontamination, all equipment, including tools, vacuums, and air filtration devices were visually inspected prior to removal from the work areas.

## 7.0 QUALITY CONTROL

Sample collection and analytical methodology used during this project were performed according to the Work Plan. All samples collected during this project were analyzed by a certified and accredited laboratory. NV5 reviewed all laboratory data for quality and usability in accordance with appropriate USEPA protocols. Based on a review of the laboratory QC data associated with the sample analysis, the recovery and precision are within the acceptable limits of the laboratory.

## 8.0 WASTE MANAGEMENT AND DISPOSAL

Waste generated (i.e. caulking material and vent assembly) as a result of the project activities was properly packaged, labeled and disposed of as PCB Bulk Product Waste, in accordance with the Work Plan and with 40 CFR 761.62. The PCB Bulk Product Waste was transported by BDC Special Waste Services, a California-certified waste transporter. The waste was disposed at US Ecology, located at Hwy 95, 11 miles south of Beatty, Nevada.

## 9.0 PROJECT SUMMARY

PCB-related work completed during this project was done so in accordance with the Work Plan. Visual inspections confirmed that materials designated for removal were removed and that no visible dust or debris resulting from the removal activities remained in the work area.

Following the removal/remediation work, confirmation surface wipe and air samples were collected. Laboratory results of the surface wipe samples, and the air samples were reported below the level of clearance established for this project.

## 10.0 DISCLAIMER

This report was prepared exclusively for use by the Santa Monica-Malibu Unified School District and may not be relied upon by any other person or entity without NV5 express written permission. The information, conclusions and recommendations described in this report apply to conditions existing at certain locations when services were performed and are intended only for the specific purposes, locations, time frames and project parameters indicated. NV5 cannot be responsible for the impact of any changes in environmental standards, practices or regulations after performance of services.

In performing our professional services, we have applied engineering and scientific judgment and used a level of effort consistent with the current standard of practice for similar types of studies.

As applicable, NV5 has relied in good faith upon representations and information furnished by individuals with respect to operations and existing property conditions, to the extent that they have not been contradicted by data obtained from other sources. Accordingly, NV5 accepts no responsibility for any deficiencies, omissions, misrepresentations, or fraudulent acts of persons interviewed.

NV5 will not accept any liability for loss, injury claim, or damage arising directly or indirectly from any use or reliance on this report. NV5 makes no warranty, expressed or implied.

This report is issued with the understanding that the client, the property owner, or its representative is responsible for ensuring that the information, conclusions, and recommendations contained herein are brought to the attention of the appropriate regulatory agencies, as required.

Material quantities are in some cases listed within this document. These quantities are not intended to be used for removal bidding purposes, nor is this document intended as a contract manual. Work methods and sequence, coordination of participants, applicable codes, engineering controls,



required submittals, and notifications should in all cases be addressed in a separate and independent bidding and contract document.

If you have any questions, please do not hesitate to contact the undersigned at (562) 495-5777. We appreciate the opportunity to be of service to the Santa Monica-Malibu Unified School District.

## 11.0 SIGNATORY

*Submitted for and on behalf of NV5.*

*Prepared by:*

**NV5**

*Reviewed by:*

**NV5**



Jonathan Barker  
Project Manager

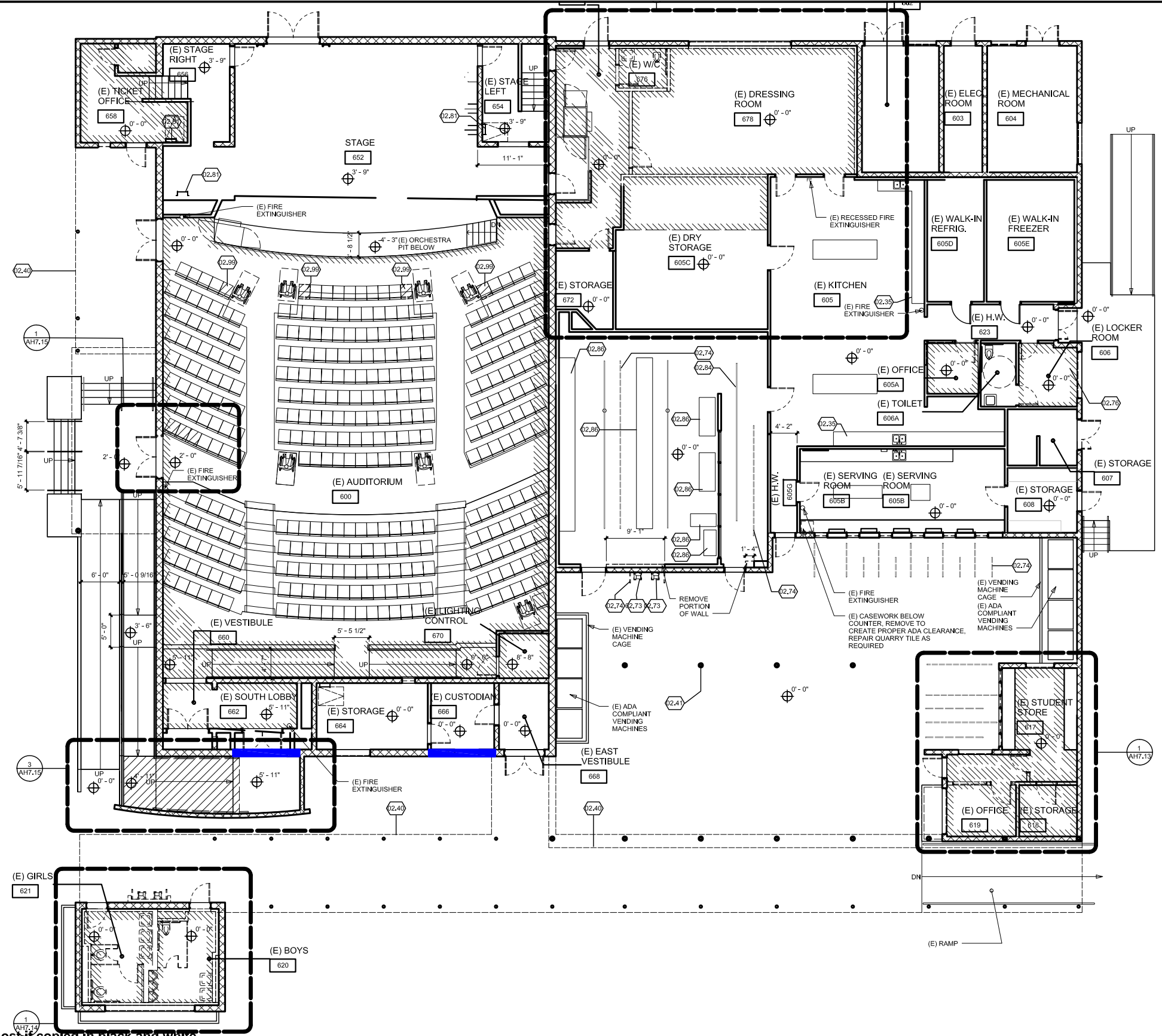


David R. Schack  
Vice President, Building Sciences

**APPENDIX A**

---

**PCB Removal Location Maps**



This figure was created in color. Significant information may be lost if copied in black and white.

**Legend**  
■ PCB Removal Areas

### Scope of Work - Building H PCB Removal

Malibu High School  
 30215 Morning View Drive  
 Malibu, California



**NV5**  
 ALTA  
 ENVIRONMENTAL

3777 Long Beach Blvd. Annex Bldg. Long Beach, California 90807  
 P: (562) 495-5777 ♦ F: (562) 495-5877 ♦ www.altanviron.com

Project No.: SMSD-20-9592



## **APPENDIX B**

---

### Photo Documentation



**Photograph 1** – View of metal cladding in in the Mechanical Closets above Rooms 662/666.



**Photograph 2** – View of metal cladding around windows of Rooms 704/705.

## PROJECT PHOTOGRAPHS

Malibu High School  
Building J



**Photograph 3** – View of metal cladding of Room 772.

**PROJECT PHOTOGRAPHS**

Malibu High School  
Building J

## **APPENDIX C**

---

### **Post-Removal Confirmation Sampling Results**



Summary of Malibu High School Post-Removal Surface Wipe Sampling Results

CLIENT: SMMUSD  
 PROJECT NO: SMSD-20-9592  
 PROJECT: MMHS Demolition Monitoring

Building	Floor Plan ID	Sample Location	Component Description	Sampling Date	Sample ID	Total PCBs (µg/100cm <sup>2</sup> )
H	2nd-Story above 662	Mechanical Room	Wall Penetration Frame	9/22/2020	W-1	0.251
H	2nd-Story above 666	Mechanical Room	Wall Penetration Frame	9/22/2020	W-2	ND
H	2nd-Story above 662/666	Mechanical Room	Containment Floor	9/22/2020	W-3	ND
H	2nd-Story above 662	Mechanical Room	Vent Assembly	9/22/2020	A-1	0.793
H	2nd-Story above 666	Mechanical Room	Vent Assembly	9/22/2020	A-2	ND
J	704/705	West Window	Containment Floor	9/18/2020	W-1	0.218
J	704/705	West Window	Wall Penetration Frame	9/18/2020	W-2	0.647
J	714	North Wall	Containment Floor	9/18/2020	W-3	ND
J	714	North Wall	Wall Penetration Frame	9/18/2020	W-4	ND
J	722	East Window	Containment Floor	9/18/2020	W-5	0.162
J	722	East Window	Wall Penetration Frame	9/18/2020	W-6	0.308
Field Blank				9/18/2020	W-7	ND
J	704/705	West Window	Window Assembly	9/18/2020	A-1	250D
J	714	North Wall	Vent Assembly	9/18/2020	A-2	131D
J	722	East Window	Window Assembly	9/18/2020	A-3	116D
J	704/705	West Window	Containment Floor	9/25/2020	905-A-1	ND
J	704/705	West Window	Window Assembly	9/25/2020	905-A-2	2.190
J	704/705	West Window	Wall Penetration Frame	9/25/2020	905-A-3	0.685
J	714	North Wall	Vent Assembly	9/30/2020	J714-1	94.6D
J	714	North Wall	Containment Floor	9/30/2020	J714-2	1.28
J	714	North Wall	Wall Penetration Frame	9/30/2020	J714-3	0.545
J	704/705	West Window	Wall Penetration Frame	9/30/2020	J705-1	3.19D
J	722	East Window	Window Assembly	9/30/2020	J722-2	0.391
J	704/705	West Window	Wall Penetration Frame	10/9/2020	W-W1	0.801
J	714	North Wall	Containment Floor	10/9/2020	N-1	ND
J	714	North Wall	Vent Assembly	10/9/2020	N-2	5.320
J	714	North Wall	Wall Penetration Frame	10/9/2020	N-3	ND

Notes:

µg/100cm<sup>2</sup> = microgram per 100 square centimeters

PCB = polychlorinated biphenyl

J = A"J-flag" designation indicates that the reported concentration was detected above the method detection limit, but below the laboratory's practical quantitative limit

**APPENDIX D**

---

Laboratory Reports



## AMERICAN ENVIRONMENTAL TESTING LABORATORY

2834 North Naomi Street Burbank, CA 91504 • ELAP# 1541 & 2402 • LACSD# 10181  
TEL (888) 288-AETL • (818) 845-8200 • www.aetlab.com

September 21, 2020

AETL Job No: BBI0238  
Received Date: 09/18/2020  
Project Number: SMSD-20-9592

NV5  
3777 Long Beach Boulevard, Annex Building  
Long Beach, CA 90807  
Telephone: (562) 495-5777

Attention: Jonathan Barkman

Project Name: MMHS  
Site: MMHS  
30215 Morning Dr. View  
Malibu, CA 90265

Enclosed please find the results of analyses for samples which were analyzed as specified on the attached chain of custody. If you have any questions concerning this report, please do not hesitate to call.

Checked By:

Harriet Torosyan  
Project Manager

Approved By:

Jim Lin  
Project Manager

Table of Contents

Client Project Name: Malibu High School (SMSD-20-9592)  
Work Order Number: BBI0238

1 Cover Letter ..... 1  
2 Sample Condition on Receipt ..... 3  
3 Chain of Custody ..... 4  
4 Cooler Receipt Form ..... 5  
5 Case Narrative ..... 6  
6 Samples Received ..... 7  
7 Positive Hits Summary ..... 8  
8 Analytical Results ..... 9  
9 Quality Control Results ..... 12  
10 Qualifiers and Definitions ..... 14



A KYZER LABS COMPANY

# AMERICAN ENVIRONMENTAL TESTING LABORATORY

2834 North Naomi Street Burbank, CA 91504 • ELAP# 1541 & 2402 • LACSD# 10181  
TEL (888) 288-AETL • (818) 845-8200 • www.aetlab.com

NV5	AETL Job Number: BBI0238	Site: MMHS
3777 Long Beach Boulevard, Annex Building	Project Number: SMSD-20-9592	30215 Morning Dr. View
Long Beach, CA 90807	Project Manager: Jonathan Barkman	Malibu, CA 90265
	Project Name: Malibu High School	Reported: 09/21/2020 17:33

## Sample Condition on Receipt

Cooler ID: Default Cooler

Temperature: 5.0 °C

Are the COCs Correct	Y		
Labels Legible	Y	Containers In Good Condition	Y
COC/Labels Agree	Y	Samples Preserved Properly	Y
Sufficient Sample Volume	Y	Sufficient Holding Time for all Tests	Y
Sample Labels intact	Y	Received on Ice	Y





A KYZER LABS COMPANY

# AMERICAN ENVIRONMENTAL TESTING LABORATORY

2834 N. NAOMI ST. BURBANK, CALIFORNIA 91504 ELAP# 1541 & 2402 LACSD# 10181

TEL (888) 288-AETL (818) 845-8200 FAX (818) 845-8840 www.aetlab.com

## COOLER RECEIPT FORM

Client Name: <i>NVS</i>			
Project Name:			
AETL Job Number: <i>BB10238</i>			
Date Received: <i>9/18/2020</i>		Received by: <i>Sargis Pivch</i>	
Carrier: <input checked="" type="checkbox"/> AETL Courier <input type="checkbox"/> Client <input type="checkbox"/> GLS <input type="checkbox"/> FedEx <input type="checkbox"/> UPS			
<input type="checkbox"/> Others:			
Samples were received in: <input checked="" type="checkbox"/> Cooler ( <i>1</i> ) <input type="checkbox"/> Other (Specify):			
Inside temperature of shipping container No 1: <i>5°C</i> , No 2: _____, No 3: _____			
Type of sample containers: <input type="checkbox"/> VOA, <input type="checkbox"/> Glass bottles, <input checked="" type="checkbox"/> Wide mouth jars, <input type="checkbox"/> HDPE bottles, <input type="checkbox"/> Metal sleeves, <input type="checkbox"/> Others (Specify):			
How are samples preserved: <input type="checkbox"/> None, <input checked="" type="checkbox"/> Ice, <input type="checkbox"/> Blue Ice, <input type="checkbox"/> Dry Ice			
<input type="checkbox"/> None, <input type="checkbox"/> HNO <sub>3</sub> , <input type="checkbox"/> NaOH, <input type="checkbox"/> ZnOAc, <input type="checkbox"/> HCl, <input type="checkbox"/> Na <sub>2</sub> S <sub>2</sub> O <sub>3</sub> , <input type="checkbox"/> MeOH			
<input checked="" type="checkbox"/> Other (Specify): <i>WIPs</i>			
	<b>Yes</b>	<b>No, explain below</b>	<b>Name, if client was notified.</b>
1. Are the COCs Correct?	<i>✓</i>		
2. Are the Sample labels legible?	<i>✓</i>		
3. Do samples match the COC?	<i>✓</i>		
4. Are the required analyses clear?	<i>✓</i>		
5. Is there enough samples for required analysis?	<i>✓</i>		
6. Are samples sealed with evidence tape?	<i>N/A</i>		
7. Are sample containers in good condition?	<i>✓</i>		
8. Are samples preserved?	<i>✓</i>		
9. Are samples preserved properly for the intended analysis?	<i>✓</i>		
10. Are the VOAs free of headspace?	<i>N/A</i>		
11. Are the jars free of headspace?	<i>↓</i>		

**PLEASE NOTE ALL SAMPLES WILL BE DISPOSED OF 30 DAYS AFTER RECEIVING DATE. IF AETL IS INFORMED OTHERWISE, THERE WILL BE A STORAGE CHARGE PER SAMPLE PER MONTH FOR ANY SAMPLE HELD BEYOND 30 DAYS.**

Explain all "No" answers for above questions:

---



---



---



---



A KYZER LABS COMPANY

# AMERICAN ENVIRONMENTAL TESTING LABORATORY

2834 North Naomi Street Burbank, CA 91504 • ELAP# 1541 & 2402 • LACSD# 10181

TEL (888) 288-AETL • (818) 845-8200 • www.aetlab.com

NV5	AETL Job Number: BBI0238	Site: MMHS
3777 Long Beach Boulevard, Annex Building	Project Number: SMSD-20-9592	30215 Morning Dr. View
Long Beach, CA 90807	Project Manager: Jonathan Barkman	Malibu, CA 90265
	Project Name: Malibu High School	Reported: 09/21/2020 17:33

## Case Narrative

The following "Sample Received" Section summarizes the samples received and associated analyses requested as specified on the enclosed chain of custody.

Unless otherwise noted, all results of soil and solid samples are based on wet weight.

No analytical non-conformances were encountered.

Qualifiers are noted in the report.





# AMERICAN ENVIRONMENTAL TESTING LABORATORY

2834 North Naomi Street Burbank, CA 91504 • ELAP# 1541 & 2402 • LACSD# 10181  
 TEL (888) 288-AETL • (818) 845-8200 • www.aetlab.com

NV5 3777 Long Beach Boulevard, Annex Building Long Beach, CA 90807	AETL Job Number: BBI0238 Project Number: SMSD-20-9592 Project Manager: Jonathan Barkman Project Name: Malibu High School	Site: MMHS 30215 Morning Dr. View Malibu, CA 90265 Reported: 09/21/2020 17:33
--	---	--

## Samples Received

**AETL received the following samples on 09/18/2020 with the following specifications**

Project Name: MMHS Site: 30215 Morning Dr. View Malibu, CA 90265		
<b>Client ID</b> A-1		<b>Sample Date</b> 09/18/2020 14:15
<b>Lab ID</b> BBI0238-01	<b>Matrix</b> Wipe	<b>Quantity of Containers</b> 1
<b>Analysis</b> EPA 8082	<b>Units</b> ug/100cm2	<b>TAT</b> 1
<b>Client ID</b> A-2		<b>Sample Date</b> 09/18/2020 14:20
<b>Lab ID</b> BBI0238-02	<b>Matrix</b> Wipe	<b>Quantity of Containers</b> 1
<b>Analysis</b> EPA 8082	<b>Units</b> ug/100cm2	<b>TAT</b> 1
<b>Client ID</b> A-3		<b>Sample Date</b> 09/18/2020 14:25
<b>Lab ID</b> BBI0238-03	<b>Matrix</b> Wipe	<b>Quantity of Containers</b> 1
<b>Analysis</b> EPA 8082	<b>Units</b> ug/100cm2	<b>TAT</b> 1
<b>Total Number of Samples received:</b>		<b>3</b>



A KYZER LABS COMPANY

# AMERICAN ENVIRONMENTAL TESTING LABORATORY

2834 North Naomi Street Burbank, CA 91504 • ELAP# 1541 & 2402 • LACSD# 10181  
 TEL (888) 288-AETL • (818) 845-8200 • www.aetlab.com

NV5	AETL Job Number: BBI0238	Site: MMHS
3777 Long Beach Boulevard, Annex Building	Project Number: SMSD-20-9592	30215 Morning Dr. View
Long Beach, CA 90807	Project Manager: Jonathan Barkman	Malibu, CA 90265
	Project Name: Malibu High School	Reported: 09/21/2020 17:33

## Positive Hits Summary

Lab ID	Client ID					Received
<b>BBI0238-01</b>	A-1					09/18/2020 16:23
Method	Analyte	Result	Qualifier	Unit	Analyzed	
EPA 8082	Aroclor-1260 (PCB-1260)	250	D	ug/100cm2	09/21/2020 13:39	
<b>BBI0238-02</b>	A-2					09/18/2020 16:23
Method	Analyte	Result	Qualifier	Unit	Analyzed	
EPA 8082	Aroclor-1254 (PCB-1254)	131	D	ug/100cm2	09/21/2020 14:18	
<b>BBI0238-03</b>	A-3					09/18/2020 16:23
Method	Analyte	Result	Qualifier	Unit	Analyzed	
EPA 8082	Aroclor-1260 (PCB-1260)	116	D	ug/100cm2	09/21/2020 14:38	



# AMERICAN ENVIRONMENTAL TESTING LABORATORY

2834 North Naomi Street Burbank, CA 91504 • ELAP# 1541 & 2402 • LACSD# 10181  
 TEL (888) 288-AETL • (818) 845-8200 • www.aetlab.com

NV5 3777 Long Beach Boulevard, Annex Building Long Beach, CA 90807	AETL Job Number: BBI0238 Project Number: SMSD-20-9592 Project Manager: Jonathan Barkman Project Name: Malibu High School	Site: MMHS 30215 Morning Dr. View Malibu, CA 90265 Reported: 09/21/2020 17:33
--	---	--

## Analytical Results

**Client ID: A-1**

**Lab ID: BBI0238-01 (Wipe)**

**Sampled: 09/18/20 14:15**

Analyte	Result	Qualifier	Dilution	MDL	RL	Units	Prepared Date/Time	Analyzed Date/Time	Batch	Analyst Initials	Prep. Method
---------	--------	-----------	----------	-----	----	-------	--------------------	--------------------	-------	------------------	--------------

**PCBs**

**Method: EPA 8082**

Aroclor-1016 (PCB-1016)	ND		1	0.0200	0.0500	ug/100cm2	09/18/20 16:30	09/21/20 13:39	B0I0426	ATS	3540C	
Aroclor-1221 (PCB-1221)	ND		1	0.0200	0.0500	ug/100cm2	09/18/20 16:30	09/21/20 13:39	B0I0426	ATS	3540C	
Aroclor-1232 (PCB-1232)	ND		1	0.0200	0.0500	ug/100cm2	09/18/20 16:30	09/21/20 13:39	B0I0426	ATS	3540C	
Aroclor-1242 (PCB-1242)	ND		1	0.0200	0.0500	ug/100cm2	09/18/20 16:30	09/21/20 13:39	B0I0426	ATS	3540C	
Aroclor-1248 (PCB-1248)	ND		1	0.0200	0.0500	ug/100cm2	09/18/20 16:30	09/21/20 13:39	B0I0426	ATS	3540C	
Aroclor-1254 (PCB-1254)	ND		1	0.0200	0.0500	ug/100cm2	09/18/20 16:30	09/21/20 13:39	B0I0426	ATS	3540C	
<b>Aroclor-1260 (PCB-1260)</b>	<b>250</b>	D	1000	20.0	50.0	ug/100cm2	09/18/20 16:30	09/21/20 13:39	B0I0426	ATS	3540C	
Aroclor-1262 (PCB-1262)	ND		1	0.0200	0.0500	ug/100cm2	09/18/20 16:30	09/21/20 13:39	B0I0426	ATS	3540C	
Aroclor-1268 (PCB-1268)	ND		1	0.0200	0.0500	ug/100cm2	09/18/20 16:30	09/21/20 13:39	B0I0426	ATS	3540C	
-----												
	Recovery				Acceptance Criteria							
Surrogate: Decachlorobiphenyl	87.6%				30-150			09/18/20 16:30	09/21/20 13:39	B0I0426	ATS	3540C
Surrogate: Tetrachloro-m-xylene	67.4%				30-150			09/18/20 16:30	09/21/20 13:39	B0I0426	ATS	3540C



A KYZER LABS COMPANY

# AMERICAN ENVIRONMENTAL TESTING LABORATORY

2834 North Naomi Street Burbank, CA 91504 • ELAP# 1541 & 2402 • LACSD# 10181  
 TEL (888) 288-AETL • (818) 845-8200 • www.aetlab.com

NV5	AETL Job Number: BBI0238	Site: MMHS
3777 Long Beach Boulevard, Annex Building	Project Number: SMSD-20-9592	30215 Morning Dr. View
Long Beach, CA 90807	Project Manager: Jonathan Barkman	Malibu, CA 90265
	Project Name: Malibu High School	Reported: 09/21/2020 17:33

## Analytical Results

Client ID: A-2

Lab ID: BBI0238-02 (Wipe)

Sampled: 09/18/20 14:20

Analyte	Result	Qualifier	Dilution	MDL	RL	Units	Prepared Date/Time	Analyzed Date/Time	Batch	Analyst Initials	Prep. Method
---------	--------	-----------	----------	-----	----	-------	--------------------	--------------------	-------	------------------	--------------

### PCBs

Method: EPA 8082

Aroclor-1016 (PCB-1016)	ND		1	0.0200	0.0500	ug/100cm2	09/18/20 16:30	09/21/20 14:18	B0I0426	ATS	3540C
Aroclor-1221 (PCB-1221)	ND		1	0.0200	0.0500	ug/100cm2	09/18/20 16:30	09/21/20 14:18	B0I0426	ATS	3540C
Aroclor-1232 (PCB-1232)	ND		1	0.0200	0.0500	ug/100cm2	09/18/20 16:30	09/21/20 14:18	B0I0426	ATS	3540C
Aroclor-1242 (PCB-1242)	ND		1	0.0200	0.0500	ug/100cm2	09/18/20 16:30	09/21/20 14:18	B0I0426	ATS	3540C
Aroclor-1248 (PCB-1248)	ND		1	0.0200	0.0500	ug/100cm2	09/18/20 16:30	09/21/20 14:18	B0I0426	ATS	3540C
<b>Aroclor-1254 (PCB-1254)</b>	<b>131</b>	D	100	2.00	5.00	ug/100cm2	09/18/20 16:30	09/21/20 14:18	B0I0426	ATS	3540C
Aroclor-1260 (PCB-1260)	ND		1	0.0200	0.0500	ug/100cm2	09/18/20 16:30	09/21/20 14:18	B0I0426	ATS	3540C
Aroclor-1262 (PCB-1262)	ND		1	0.0200	0.0500	ug/100cm2	09/18/20 16:30	09/21/20 14:18	B0I0426	ATS	3540C
Aroclor-1268 (PCB-1268)	ND		1	0.0200	0.0500	ug/100cm2	09/18/20 16:30	09/21/20 14:18	B0I0426	ATS	3540C

#### Recovery

Surrogate: Decachlorobiphenyl 57.7%  
 Surrogate: Tetrachloro-m-xylene 64.3%

#### Acceptance Criteria

30-150 09/18/20 16:30 09/21/20 14:18 B0I0426 ATS 3540C  
 30-150 09/18/20 16:30 09/21/20 14:18 B0I0426 ATS 3540C



A KYZER LABS COMPANY

# AMERICAN ENVIRONMENTAL TESTING LABORATORY

2834 North Naomi Street Burbank, CA 91504 • ELAP# 1541 & 2402 • LACSD# 10181  
 TEL (888) 288-AETL • (818) 845-8200 • www.aetlab.com

NV5	AETL Job Number: BBI0238	Site: MMHS
3777 Long Beach Boulevard, Annex Building	Project Number: SMSD-20-9592	30215 Morning Dr. View
Long Beach, CA 90807	Project Manager: Jonathan Barkman	Malibu, CA 90265
	Project Name: Malibu High School	Reported: 09/21/2020 17:33

## Analytical Results

Client ID: A-3

Lab ID: BBI0238-03 (Wipe)

Sampled: 09/18/20 14:25

Analyte	Result	Qualifier	Dilution	MDL	RL	Units	Prepared Date/Time	Analyzed Date/Time	Batch	Analyst Initials	Prep. Method
---------	--------	-----------	----------	-----	----	-------	--------------------	--------------------	-------	------------------	--------------

### PCBs

Method: EPA 8082

Aroclor-1016 (PCB-1016)	ND		1	0.0200	0.0500	ug/100cm2	09/18/20 16:30	09/21/20 14:38	B0I0426	ATS	3540C
Aroclor-1221 (PCB-1221)	ND		1	0.0200	0.0500	ug/100cm2	09/18/20 16:30	09/21/20 14:38	B0I0426	ATS	3540C
Aroclor-1232 (PCB-1232)	ND		1	0.0200	0.0500	ug/100cm2	09/18/20 16:30	09/21/20 14:38	B0I0426	ATS	3540C
Aroclor-1242 (PCB-1242)	ND		1	0.0200	0.0500	ug/100cm2	09/18/20 16:30	09/21/20 14:38	B0I0426	ATS	3540C
Aroclor-1248 (PCB-1248)	ND		1	0.0200	0.0500	ug/100cm2	09/18/20 16:30	09/21/20 14:38	B0I0426	ATS	3540C
Aroclor-1254 (PCB-1254)	ND		1	0.0200	0.0500	ug/100cm2	09/18/20 16:30	09/21/20 14:38	B0I0426	ATS	3540C
<b>Aroclor-1260 (PCB-1260)</b>	<b>116</b>	D	100	2.00	5.00	ug/100cm2	09/18/20 16:30	09/21/20 14:38	B0I0426	ATS	3540C
Aroclor-1262 (PCB-1262)	ND		1	0.0200	0.0500	ug/100cm2	09/18/20 16:30	09/21/20 14:38	B0I0426	ATS	3540C
Aroclor-1268 (PCB-1268)	ND		1	0.0200	0.0500	ug/100cm2	09/18/20 16:30	09/21/20 14:38	B0I0426	ATS	3540C

#### Recovery

Surrogate: Decachlorobiphenyl  
 Surrogate: Tetrachloro-m-xylene

62.7%  
 89.6%

#### Acceptance Criteria

30-150  
 30-150

09/18/20 16:30 09/21/20 14:38 B0I0426 ATS 3540C  
 09/18/20 16:30 09/21/20 14:38 B0I0426 ATS 3540C



A KYZER LABS COMPANY

# AMERICAN ENVIRONMENTAL TESTING LABORATORY

2834 North Naomi Street Burbank, CA 91504 • ELAP# 1541 & 2402 • LACSD# 10181  
 TEL (888) 288-AETL • (818) 845-8200 • www.aetlab.com

NV5	AETL Job Number: BBI0238	Site: MMHS
3777 Long Beach Boulevard, Annex Building	Project Number: SMSD-20-9592	30215 Morning Dr. View
Long Beach, CA 90807	Project Manager: Jonathan Barkman	Malibu, CA 90265
	Project Name: Malibu High School	Reported: 09/21/2020 17:33

## Quality Control Results

### PCBs (EPA 8082)

Analyte	Result	MDL	RL	Units	Spike Level	Source Result	%REC	%REC Limits	RPD	RPD Limit	Qualifier
<b>Batch: B0I0426 - 3540C</b>					<b>Prepared: 09/18/2020 16:30</b>						
Method Blank (B0I0426-BLK1)					<b>Analyzed: 09/21/2020 11:02</b>						
Aroclor-1016 (PCB-1016)	ND	0.0200	0.0500	ug/100cm2							
Aroclor-1221 (PCB-1221)	ND	0.0200	0.0500	ug/100cm2							
Aroclor-1232 (PCB-1232)	ND	0.0200	0.0500	ug/100cm2							
Aroclor-1242 (PCB-1242)	ND	0.0200	0.0500	ug/100cm2							
Aroclor-1248 (PCB-1248)	ND	0.0200	0.0500	ug/100cm2							
Aroclor-1254 (PCB-1254)	ND	0.0200	0.0500	ug/100cm2							
Aroclor-1260 (PCB-1260)	ND	0.0200	0.0500	ug/100cm2							
Aroclor-1262 (PCB-1262)	ND	0.0200	0.0500	ug/100cm2							
Aroclor-1268 (PCB-1268)	ND	0.0200	0.0500	ug/100cm2							
<hr/>											
Surrogate: Decachlorobiphenyl	0.0386			ug/100cm2	0.0500		77.2	30-150			
Surrogate: Tetrachloro-m-xylene	0.0379			ug/100cm2	0.0500		75.8	30-150			



A KYZER LABS COMPANY

# AMERICAN ENVIRONMENTAL TESTING LABORATORY

2834 North Naomi Street Burbank, CA 91504 • ELAP# 1541 & 2402 • LACSD# 10181  
 TEL (888) 288-AETL • (818) 845-8200 • www.aetlab.com

NV5	AETL Job Number: BBI0238	Site: MMHS
3777 Long Beach Boulevard, Annex Building	Project Number: SMSD-20-9592	30215 Morning Dr. View
Long Beach, CA 90807	Project Manager: Jonathan Barkman	Malibu, CA 90265
	Project Name: Malibu High School	Reported: 09/21/2020 17:33

## Quality Control Results

### PCBs (EPA 8082)

Analyte	Result	MDL	RL	Units	Spike Level	Source Result	%REC	%REC Limits	RPD	RPD Limit	Qualifier
<b>Batch: B0I0426 - 3540C (Continued)</b>					<b>Prepared: 09/18/2020 16:30</b>						
LCS (B0I0426-BS1)					<b>Analyzed: 09/21/2020 10:23</b>						
Aroclor-1016 (PCB-1016)	0.762	0.0200	0.0500	ug/100cm2	1.00		76.2	50-150			
Aroclor-1260 (PCB-1260)	0.711	0.0200	0.0500	ug/100cm2	1.00		71.1	50-150			
<i>Surrogate: Decachlorobiphenyl</i>	<i>0.0511</i>			<i>ug/100cm2</i>	<i>0.0500</i>		<i>102</i>	<i>30-150</i>			
<i>Surrogate: Tetrachloro-m-xylene</i>	<i>0.0254</i>			<i>ug/100cm2</i>	<i>0.0500</i>		<i>50.8</i>	<i>30-150</i>			
LCSD (B0I0426-BSD1)					<b>Analyzed: 09/21/2020 10:43</b>						
Aroclor-1016 (PCB-1016)	0.745	0.0200	0.0500	ug/100cm2	1.00		74.5	50-150	2.32	40	
Aroclor-1260 (PCB-1260)	0.890	0.0200	0.0500	ug/100cm2	1.00		89.0	50-150	22.3	40	
<i>Surrogate: Decachlorobiphenyl</i>	<i>0.0496</i>			<i>ug/100cm2</i>	<i>0.0500</i>		<i>99.2</i>	<i>30-150</i>			
<i>Surrogate: Tetrachloro-m-xylene</i>	<i>0.0447</i>			<i>ug/100cm2</i>	<i>0.0500</i>		<i>89.4</i>	<i>30-150</i>			



A KYZER LABS COMPANY

# AMERICAN ENVIRONMENTAL TESTING LABORATORY

2834 North Naomi Street Burbank, CA 91504 • ELAP# 1541 & 2402 • LACSD# 10181

TEL (888) 288-AETL • (818) 845-8200 • www.aetlab.com

NV5	AETL Job Number: BBI0238	Site: MMHS
3777 Long Beach Boulevard, Annex Building	Project Number: SMSD-20-9592	30215 Morning Dr. View
Long Beach, CA 90807	Project Manager: Jonathan Barkman	Malibu, CA 90265
	Project Name: Malibu High School	Reported: 09/21/2020 17:33

## Qualifiers and Definitions

### Item Qualifiers

D Sample was analyzed under dilution due to matrix interference.

### Item Definitions

% wt	Percent Weight
%REC	Percent Recovery
°C	Degrees Celsius
AETL	American Environmental Testing Laboratory, LLC
C	Carbon
CARB	California Air Resources Board
COC	Chain of Custody
DRO	Diesel Range Organics
Dup	Duplicate
ELAP	Environmental Laboratory Accreditation Program
EPA	Environmental Protection Agency
GRO	Gasoline Range Organics
HC	Hydrocarbon
LACSD	Los Angeles County Sanitation Districts
LCS	Laboratory Control Sample - A sample matrix, free from the analytes of interest, spiked with verified known amounts of analytes.
LCSD	Laboratory Control Sample Duplicate - A replicate of Laboratory Control Sample.
LOQ	Limit of Quantitation
MDL	Method Detection Limit - The minimum measured concentration of a substance that can be reported with 99% confidence. MDL is statistically derived number which is specific for each instrument, each method and each compound.
mg/kg	Miligrams per Kilogram
mg/L	Miligrams per Liter
MRO	Motor oil Range Organics
MS	Matrix Spike - A sample prepared, taken through all sample preparation and analytical steps of the procedure and analyzed as an independent test results.
MSD	Matrix Spike Duplicate - A replicate of Matrix Spike Sample.
N	No
ND	Analyte is not detected below Method Detection Limit.
ng/m3	Nanograms per cubic meter
NIOSH	National Institute for Occupational Safety and Health
nL/L	Nanoliters per Liter
NTU	Nephelometric Turbidity Units
Ohm-cm	Ohms per centimeter
OSHA	Occupational Safety and Health Administration
PCB	Polychlorinated Biphenyl





A KYZER LABS COMPANY

# AMERICAN ENVIRONMENTAL TESTING LABORATORY

2834 North Naomi Street Burbank, CA 91504 • ELAP# 1541 & 2402 • LACSD# 10181

TEL (888) 288-AETL • (818) 845-8200 • www.aetlab.com

NV5	AETL Job Number: BBI0238	Site: MMHS
3777 Long Beach Boulevard, Annex Building	Project Number: SMSD-20-9592	30215 Morning Dr. View
Long Beach, CA 90807	Project Manager: Jonathan Barkman	Malibu, CA 90265
	Project Name: Malibu High School	Reported: 09/21/2020 17:33

RL	Reporting Limit - The lowest concentration at which an analyte can be detected in a sample and its concentration can be reported with a specified degree of confidence, accuracy and precision. For usage at AETL, RL is equivalent to LOQ.
RPD	Relative Percent Difference
SIM	Selective Ion Monitoring
SPLP	Synthetic Precipitation Leaching Procedure
STLC	Soluble Threshold Limit Concentration
TCLP	Toxicity Characteristic Leaching Procedure
TPH	Total Petroleum Hydrocarbons
TTLC	Total Threshold Limit Concentrations
ug/kg	Micrograms per Kilogram
ug/L	Micrograms per Liter
ug/m3	Micrograms per cubic meter
WET	Waste Extraction Test
Y	Yes
ZHE	Zero Headspace Extraction



## AMERICAN ENVIRONMENTAL TESTING LABORATORY

2834 North Naomi Street Burbank, CA 91504 • ELAP# 1541 & 2402 • LACSD# 10181  
TEL (888) 288-AETL • (818) 845-8200 • www.aetlab.com

September 23, 2020

AETL Job No: BBI0259  
Received Date: 09/22/2020  
Project Number: SMSD-20-9592

NV5  
3777 Long Beach Boulevard, Annex Building  
Long Beach, CA 90807  
Telephone: (562) 495-5777  
Attention: Jonathan Barkman

Project Name: MMHS  
Site: Malibu HS  
30215 Morning View Dr.  
Malibu, CA 90265

Enclosed please find the results of analyses for samples which were analyzed as specified on the attached chain of custody. If you have any questions concerning this report, please do not hesitate to call.

Checked By:

Harriet Torosyan  
Project Manager

Approved By:

Corey Jones  
Project Manager

Table of Contents

Client Project Name: Malibu High School (SMSD-20-9592)  
Work Order Number: BBI0259

1 Cover Letter ..... 1  
2 Sample Condition on Receipt ..... 3  
3 Chain of Custody ..... 4  
4 Cooler Receipt Form ..... 5  
5 Case Narrative ..... 6  
6 Samples Received ..... 7  
7 Positive Hits Summary ..... 8  
8 Analytical Results ..... 9  
9 Quality Control Results ..... 12  
10 Qualifiers and Definitions ..... 14



A KYZER LABS COMPANY

# AMERICAN ENVIRONMENTAL TESTING LABORATORY

2834 North Naomi Street Burbank, CA 91504 • ELAP# 1541 & 2402 • LACSD# 10181  
TEL (888) 288-AETL • (818) 845-8200 • www.aetlab.com

NV5	AETL Job Number: BBI0259	Site: Malibu HS
3777 Long Beach Boulevard, Annex Building	Project Number: SMSD-20-9592	30215 Morning View Dr.
Long Beach, CA 90807	Project Manager: Jonathan Barkman	Malibu, CA 90265
	Project Name: Malibu High School	Reported: 09/23/2020 17:05

## Sample Condition on Receipt

Cooler ID: Default Cooler

Temperature: 4.0 °C

Are the COCs Correct	Y		
Labels Legible	Y	Containers In Good Condition	Y
COC/Labels Agree	Y	Samples Preserved Properly	Y
Sufficient Sample Volume	Y	Sufficient Holding Time for all Tests	Y
Sample Labels intact	Y	Received on Ice	Y



**AMERICAN ENVIRONMENTAL TESTING LABORATORY**  
 2834 NORTH NAOMI ST. BURBANK, CALIFORNIA 91504 ELAP # 1541 LACSD# 10181  
 TEL (888) 288-AETL (818) 845-8200 FAX (818) 845-8840 www.aetlab.com

**CHAIN OF CUSTODY RECORD**

119557

AETL JOB No. BB10259

Page 1 of 1

COMPANY NVS/ALTA  
 PROJECT MANAGER Scott Hays Barkman  
 COMPANY ADDRESS 3777 Long Beach Blvd. Annex Bldg.  
 PHONE 310 920 8404  
 PROJECT NAME MMHS  
 EMAIL scott.hays@barkman.com  
 PROJECT # MSD-20-9592  
 SITE NAME AND ADDRESS 30215 Morning View Dr. Malibu Cal, 90265  
 PO # \_\_\_\_\_

SAMPLE ID	LAB ID	DATE	TIME	MATRIX	CONTAINER NUMBER/SIZE	PRES.
W-1	BB10259.01	9/22/20	0830	WIPE	100cm <sup>2</sup>	ICE
W-2	BB10259.02	9/22/20	0835	---	---	---
W-3	BB10259.03	9/22/20	0840	---	---	---

**ANALYSIS REQUESTED**

TEST INSTRUCTIONS & COMMENTS

**RELINQUISHED BY: 1. SAMPLER:** Signature: [Signature] Printed Name: ANDY FLORES Date: 9/27/20 Time: 10/10  
**RECEIVED BY: 1.** Signature: \_\_\_\_\_ Printed Name: \_\_\_\_\_ Date: \_\_\_\_\_ Time: \_\_\_\_\_

**RELINQUISHED BY: 2.** Signature: \_\_\_\_\_ Printed Name: \_\_\_\_\_ Date: \_\_\_\_\_ Time: \_\_\_\_\_  
**RECEIVED BY: 2.** Signature: [Signature] Printed Name: SARAH Date: 9/27/20 Time: 10/10

**RELINQUISHED BY: 3.** Signature: \_\_\_\_\_ Printed Name: \_\_\_\_\_ Date: \_\_\_\_\_ Time: \_\_\_\_\_  
**RECEIVED BY: 3.** Signature: [Signature] Printed Name: SARAH Date: 9/27/20 Time: 10/10

**TOTAL NUMBER OF CONTAINERS:** 3

**BILLING INFORMATION / SPECIAL INSTRUCTIONS**

**TURN AROUND TIME**

NORMAL  SAME DAY RUSH  NEXT DAY RUSH   
 2 DAYS RUSH  3 DAYS RUSH  4 DAYS RUSH   
 HARD COPY  E-COPY  
 GEOTRACKER (GLOBAL ID) \_\_\_\_\_  
 OTHER (PLEASE SPECIFY) \_\_\_\_\_

DISTRIBUTION: WHITE - Laboratory, CANARY - Laboratory, PINK - Project/Account Manager, YELLOW - Sampler/Originator



A KYZER LABS COMPANY

# AMERICAN ENVIRONMENTAL TESTING LABORATORY

2834 N. NAOMI ST. BURBANK, CALIFORNIA 91504 ELAP# 1541 & 2402 LACSD# 10181

TEL (888) 288-AETL (818) 845-8200 FAX (818) 845-8840 www.aetlab.com

## COOLER RECEIPT FORM

Client Name: <i>NYS</i>			
Project Name:			
AETL Job Number: <i>BB10259</i>			
Date Received: <i>9/22/2020</i>		Received by: <i>Sergis Pireh</i>	
Carrier: <input type="checkbox"/> AETL Courier <input checked="" type="checkbox"/> Client <input type="checkbox"/> GLS <input type="checkbox"/> FedEx <input type="checkbox"/> UPS			
<input type="checkbox"/> Others:			
Samples were received in: <input checked="" type="checkbox"/> Cooler ( <i>1</i> ) <input type="checkbox"/> Other (Specify):			
Inside temperature of shipping container No 1: <i>4°C</i> , No 2: , No 3:			
Type of sample containers: <input type="checkbox"/> VOA, <input type="checkbox"/> Glass bottles, <input checked="" type="checkbox"/> Wide mouth jars, <input type="checkbox"/> HDPE bottles, <input type="checkbox"/> Metal sleeves, <input type="checkbox"/> Others (Specify):			
How are samples preserved: <input type="checkbox"/> None, <input checked="" type="checkbox"/> Ice, <input type="checkbox"/> Blue Ice, <input type="checkbox"/> Dry Ice			
<input type="checkbox"/> None, <input type="checkbox"/> HNO <sub>3</sub> , <input type="checkbox"/> NaOH, <input type="checkbox"/> ZnOAc, <input type="checkbox"/> HCl, <input type="checkbox"/> Na <sub>2</sub> S <sub>2</sub> O <sub>3</sub> , <input type="checkbox"/> MeOH			
<input checked="" type="checkbox"/> Other (Specify): <i>WIPS</i>			
	<b>Yes</b>	<b>No, explain below</b>	<b>Name, if client was notified.</b>
1. Are the COCs Correct?	✓		
2. Are the Sample labels legible?	✓		
3. Do samples match the COC?	✓		
4. Are the required analyses clear?	✓		
5. Is there enough samples for required analysis?	✓		
6. Are samples sealed with evidence tape?	<i>N/A</i>		
7. Are sample containers in good condition?	✓		
8. Are samples preserved?	✓		
9. Are samples preserved properly for the intended analysis?	✓		
10. Are the VOAs free of headspace?	<i>N/A</i>		
11. Are the jars free of headspace?	✓		

**PLEASE NOTE ALL SAMPLES WILL BE DISPOSED OF 30 DAYS AFTER RECEIVING DATE. IF AETL IS INFORMED OTHERWISE, THERE WILL BE A STORAGE CHARGE PER SAMPLE PER MONTH FOR ANY SAMPLE HELD BEYOND 30 DAYS.**

**Explain all "No" answers for above questions:**

---



---



---



---



A KYZER LABS COMPANY

# AMERICAN ENVIRONMENTAL TESTING LABORATORY

2834 North Naomi Street Burbank, CA 91504 • ELAP# 1541 & 2402 • LACSD# 10181  
TEL (888) 288-AETL • (818) 845-8200 • www.aetlab.com

NV5	AETL Job Number: BBI0259	Site: Malibu HS
3777 Long Beach Boulevard, Annex Building	Project Number: SMSD-20-9592	30215 Morning View Dr.
Long Beach, CA 90807	Project Manager: Jonathan Barkman	Malibu, CA 90265
	Project Name: Malibu High School	Reported: 09/23/2020 17:05

## Case Narrative

The following "Sample Received" Section summarizes the samples received and associated analyses requested as specified on the enclosed chain of custody.

Unless otherwise noted, all results of soil and solid samples are based on wet weight.

No analytical non-conformances were encountered.



A KYZER LABS COMPANY

# AMERICAN ENVIRONMENTAL TESTING LABORATORY

2834 North Naomi Street Burbank, CA 91504 • ELAP# 1541 & 2402 • LACSD# 10181  
 TEL (888) 288-AETL • (818) 845-8200 • www.aetlab.com

NV5 3777 Long Beach Boulevard, Annex Building Long Beach, CA 90807	AETL Job Number: BBI0259 Project Number: SMSD-20-9592 Project Manager: Jonathan Barkman Project Name: Malibu High School	Site: Malibu HS 30215 Morning View Dr. Malibu, CA 90265 Reported: 09/23/2020 17:05
--	---	---

## Samples Received

**AETL received the following samples on 09/22/2020 with the following specifications**

Project Name: Malibu HS Site: 30215 Morning View Dr. Malibu, CA 90265		
<b>Client ID</b> W-1		<b>Sample Date</b> 09/22/2020 8:30
<b>Lab ID</b> BBI0259-01	<b>Matrix</b> Wipe	<b>Quantity of Containers</b> 1
<b>Analysis</b> EPA 8082	<b>Units</b> ug/100cm2	<b>TAT</b> 1
<b>Client ID</b> W-2		<b>Sample Date</b> 09/22/2020 8:35
<b>Lab ID</b> BBI0259-02	<b>Matrix</b> Wipe	<b>Quantity of Containers</b> 1
<b>Analysis</b> EPA 8082	<b>Units</b> ug/100cm2	<b>TAT</b> 1
<b>Client ID</b> W-3		<b>Sample Date</b> 09/22/2020 8:40
<b>Lab ID</b> BBI0259-03	<b>Matrix</b> Wipe	<b>Quantity of Containers</b> 1
<b>Analysis</b> EPA 8082	<b>Units</b> ug/100cm2	<b>TAT</b> 1

**Total Number of Samples received: 3**





A KYZER LABS COMPANY

# AMERICAN ENVIRONMENTAL TESTING LABORATORY

2834 North Naomi Street Burbank, CA 91504 • ELAP# 1541 & 2402 • LACSD# 10181  
 TEL (888) 288-AETL • (818) 845-8200 • www.aetlab.com

NV5	AETL Job Number: BBI0259	Site: Malibu HS
3777 Long Beach Boulevard, Annex Building	Project Number: SMSD-20-9592	30215 Morning View Dr.
Long Beach, CA 90807	Project Manager: Jonathan Barkman	Malibu, CA 90265
	Project Name: Malibu High School	Reported: 09/23/2020 17:05

## Positive Hits Summary

Lab ID	Client ID					Received
BBI0259-01	W-1					09/22/2020 10:10
Method	Analyte	Result	Qualifier	Unit	Analyzed	
EPA 8082	Aroclor-1254 (PCB-1254)	0.251		ug/100cm2	09/23/2020 10:43	



A KYZER LABS COMPANY

# AMERICAN ENVIRONMENTAL TESTING LABORATORY

2834 North Naomi Street Burbank, CA 91504 • ELAP# 1541 & 2402 • LACSD# 10181  
 TEL (888) 288-AETL • (818) 845-8200 • www.aetlab.com

NV5	AETL Job Number: BBI0259	Site: Malibu HS
3777 Long Beach Boulevard, Annex Building	Project Number: SMSD-20-9592	30215 Morning View Dr.
Long Beach, CA 90807	Project Manager: Jonathan Barkman	Malibu, CA 90265
	Project Name: Malibu High School	Reported: 09/23/2020 17:05

## Analytical Results

Client ID: **W-1**

Lab ID: **BBI0259-01 (Wipe)**

Sampled: **09/22/20 8:30**

Analyte	Result	Qualifier	Dilution	MDL	RL	Units	Prepared Date/Time	Analyzed Date/Time	Batch	Analyst Initials	Prep. Method
---------	--------	-----------	----------	-----	----	-------	--------------------	--------------------	-------	------------------	--------------

### PCBs

Method: **EPA 8082**

Aroclor-1016 (PCB-1016)	ND		1	0.0200	0.0500	ug/100cm2	09/22/20 11:19	09/23/20 10:43	B0I0479	ATS	3540C
Aroclor-1221 (PCB-1221)	ND		1	0.0200	0.0500	ug/100cm2	09/22/20 11:19	09/23/20 10:43	B0I0479	ATS	3540C
Aroclor-1232 (PCB-1232)	ND		1	0.0200	0.0500	ug/100cm2	09/22/20 11:19	09/23/20 10:43	B0I0479	ATS	3540C
Aroclor-1242 (PCB-1242)	ND		1	0.0200	0.0500	ug/100cm2	09/22/20 11:19	09/23/20 10:43	B0I0479	ATS	3540C
Aroclor-1248 (PCB-1248)	ND		1	0.0200	0.0500	ug/100cm2	09/22/20 11:19	09/23/20 10:43	B0I0479	ATS	3540C
<b>Aroclor-1254 (PCB-1254)</b>	<b>0.251</b>		1	0.0200	0.0500	ug/100cm2	09/22/20 11:19	09/23/20 10:43	B0I0479	ATS	3540C
Aroclor-1260 (PCB-1260)	ND		1	0.0200	0.0500	ug/100cm2	09/22/20 11:19	09/23/20 10:43	B0I0479	ATS	3540C
Aroclor-1262 (PCB-1262)	ND		1	0.0200	0.0500	ug/100cm2	09/22/20 11:19	09/23/20 10:43	B0I0479	ATS	3540C
Aroclor-1268 (PCB-1268)	ND		1	0.0200	0.0500	ug/100cm2	09/22/20 11:19	09/23/20 10:43	B0I0479	ATS	3540C
			Recovery		Acceptance Criteria						
Surrogate: Decachlorobiphenyl	75.8%			30-150	09/22/20 11:19	09/23/20 10:43	B0I0479	ATS	3540C		
Surrogate: Tetrachloro-m-xylene	92.6%			30-150	09/22/20 11:19	09/23/20 10:43	B0I0479	ATS	3540C		



A KYZER LABS COMPANY

# AMERICAN ENVIRONMENTAL TESTING LABORATORY

2834 North Naomi Street Burbank, CA 91504 • ELAP# 1541 & 2402 • LACSD# 10181  
 TEL (888) 288-AETL • (818) 845-8200 • www.aetlab.com

NV5	AETL Job Number: BBI0259	Site: Malibu HS
3777 Long Beach Boulevard, Annex Building	Project Number: SMSD-20-9592	30215 Morning View Dr.
Long Beach, CA 90807	Project Manager: Jonathan Barkman	Malibu, CA 90265
	Project Name: Malibu High School	Reported: 09/23/2020 17:05

## Analytical Results

Client ID: W-2

Lab ID: BBI0259-02 (Wipe)

Sampled: 09/22/20 8:35

Analyte	Result	Qualifier	Dilution	MDL	RL	Units	Prepared Date/Time	Analyzed Date/Time	Batch	Analyst Initials	Prep. Method
---------	--------	-----------	----------	-----	----	-------	--------------------	--------------------	-------	------------------	--------------

### PCBs

Method: EPA 8082

Aroclor-1016 (PCB-1016)	ND		1	0.0200	0.0500	ug/100cm2	09/22/20 11:19	09/23/20 11:02	B0I0479	ATS	3540C
Aroclor-1221 (PCB-1221)	ND		1	0.0200	0.0500	ug/100cm2	09/22/20 11:19	09/23/20 11:02	B0I0479	ATS	3540C
Aroclor-1232 (PCB-1232)	ND		1	0.0200	0.0500	ug/100cm2	09/22/20 11:19	09/23/20 11:02	B0I0479	ATS	3540C
Aroclor-1242 (PCB-1242)	ND		1	0.0200	0.0500	ug/100cm2	09/22/20 11:19	09/23/20 11:02	B0I0479	ATS	3540C
Aroclor-1248 (PCB-1248)	ND		1	0.0200	0.0500	ug/100cm2	09/22/20 11:19	09/23/20 11:02	B0I0479	ATS	3540C
Aroclor-1254 (PCB-1254)	ND		1	0.0200	0.0500	ug/100cm2	09/22/20 11:19	09/23/20 11:02	B0I0479	ATS	3540C
Aroclor-1260 (PCB-1260)	ND		1	0.0200	0.0500	ug/100cm2	09/22/20 11:19	09/23/20 11:02	B0I0479	ATS	3540C
Aroclor-1262 (PCB-1262)	ND		1	0.0200	0.0500	ug/100cm2	09/22/20 11:19	09/23/20 11:02	B0I0479	ATS	3540C
Aroclor-1268 (PCB-1268)	ND		1	0.0200	0.0500	ug/100cm2	09/22/20 11:19	09/23/20 11:02	B0I0479	ATS	3540C
			Recovery		Acceptance Criteria						
Surrogate: Decachlorobiphenyl	85.2%										
Surrogate: Tetrachloro-m-xylene	81.6%										



A KYZER LABS COMPANY

# AMERICAN ENVIRONMENTAL TESTING LABORATORY

2834 North Naomi Street Burbank, CA 91504 • ELAP# 1541 & 2402 • LACSD# 10181  
 TEL (888) 288-AETL • (818) 845-8200 • www.aetlab.com

NV5	AETL Job Number: BBI0259	Site: Malibu HS
3777 Long Beach Boulevard, Annex Building	Project Number: SMSD-20-9592	30215 Morning View Dr.
Long Beach, CA 90807	Project Manager: Jonathan Barkman	Malibu, CA 90265
	Project Name: Malibu High School	Reported: 09/23/2020 17:05

## Analytical Results

Client ID: W-3

Lab ID: BBI0259-03 (Wipe)

Sampled: 09/22/20 8:40

Analyte	Result	Qualifier	Dilution	MDL	RL	Units	Prepared Date/Time	Analyzed Date/Time	Batch	Analyst Initials	Prep. Method
---------	--------	-----------	----------	-----	----	-------	--------------------	--------------------	-------	------------------	--------------

### PCBs

Method: EPA 8082

Aroclor-1016 (PCB-1016)	ND		1	0.0200	0.0500	ug/100cm2	09/22/20 11:19	09/23/20 11:42	B0I0479	ATS	3540C
Aroclor-1221 (PCB-1221)	ND		1	0.0200	0.0500	ug/100cm2	09/22/20 11:19	09/23/20 11:42	B0I0479	ATS	3540C
Aroclor-1232 (PCB-1232)	ND		1	0.0200	0.0500	ug/100cm2	09/22/20 11:19	09/23/20 11:42	B0I0479	ATS	3540C
Aroclor-1242 (PCB-1242)	ND		1	0.0200	0.0500	ug/100cm2	09/22/20 11:19	09/23/20 11:42	B0I0479	ATS	3540C
Aroclor-1248 (PCB-1248)	ND		1	0.0200	0.0500	ug/100cm2	09/22/20 11:19	09/23/20 11:42	B0I0479	ATS	3540C
Aroclor-1254 (PCB-1254)	ND		1	0.0200	0.0500	ug/100cm2	09/22/20 11:19	09/23/20 11:42	B0I0479	ATS	3540C
Aroclor-1260 (PCB-1260)	ND		1	0.0200	0.0500	ug/100cm2	09/22/20 11:19	09/23/20 11:42	B0I0479	ATS	3540C
Aroclor-1262 (PCB-1262)	ND		1	0.0200	0.0500	ug/100cm2	09/22/20 11:19	09/23/20 11:42	B0I0479	ATS	3540C
Aroclor-1268 (PCB-1268)	ND		1	0.0200	0.0500	ug/100cm2	09/22/20 11:19	09/23/20 11:42	B0I0479	ATS	3540C

#### Recovery

Surrogate: Decachlorobiphenyl	72.0%
Surrogate: Tetrachloro-m-xylene	76.1%

#### Acceptance Criteria




A KYZER LABS COMPANY

# AMERICAN ENVIRONMENTAL TESTING LABORATORY

2834 North Naomi Street Burbank, CA 91504 • ELAP# 1541 & 2402 • LACSD# 10181  
 TEL (888) 288-AETL • (818) 845-8200 • www.aetlab.com

NV5	AETL Job Number: BBI0259	Site: Malibu HS
3777 Long Beach Boulevard, Annex Building	Project Number: SMSD-20-9592	30215 Morning View Dr.
Long Beach, CA 90807	Project Manager: Jonathan Barkman	Malibu, CA 90265
	Project Name: Malibu High School	Reported: 09/23/2020 17:05

## Quality Control Results

### PCBs (EPA 8082)

Analyte	Result	MDL	RL	Units	Spike Level	Source Result	%REC	%REC Limits	RPD	RPD Limit	Qualifier
<b>Batch: B0I0479 - 3540C</b>											
<b>Method Blank (B0I0479-BLK1)</b>											
Aroclor-1016 (PCB-1016)	ND	0.0200	0.0500	ug/100cm2							
Aroclor-1221 (PCB-1221)	ND	0.0200	0.0500	ug/100cm2							
Aroclor-1232 (PCB-1232)	ND	0.0200	0.0500	ug/100cm2							
Aroclor-1242 (PCB-1242)	ND	0.0200	0.0500	ug/100cm2							
Aroclor-1248 (PCB-1248)	ND	0.0200	0.0500	ug/100cm2							
Aroclor-1254 (PCB-1254)	ND	0.0200	0.0500	ug/100cm2							
Aroclor-1260 (PCB-1260)	ND	0.0200	0.0500	ug/100cm2							
Aroclor-1262 (PCB-1262)	ND	0.0200	0.0500	ug/100cm2							
Aroclor-1268 (PCB-1268)	ND	0.0200	0.0500	ug/100cm2							
<hr/>											
Surrogate: Decachlorobiphenyl	0.0495			ug/100cm2	0.0500		99.0	30-150			
Surrogate: Tetrachloro-m-xylene	0.0367			ug/100cm2	0.0500		73.3	30-150			



A KYZER LABS COMPANY

# AMERICAN ENVIRONMENTAL TESTING LABORATORY

2834 North Naomi Street Burbank, CA 91504 • ELAP# 1541 & 2402 • LACSD# 10181  
 TEL (888) 288-AETL • (818) 845-8200 • www.aetlab.com

NV5	AETL Job Number: BBI0259	Site: Malibu HS
3777 Long Beach Boulevard, Annex Building	Project Number: SMSD-20-9592	30215 Morning View Dr.
Long Beach, CA 90807	Project Manager: Jonathan Barkman	Malibu, CA 90265
	Project Name: Malibu High School	Reported: 09/23/2020 17:05

## Quality Control Results

### PCBs (EPA 8082)

Analyte	Result	MDL	RL	Units	Spike Level	Source Result	%REC	%REC Limits	RPD	RPD Limit	Qualifier
<b>Batch: B0I0479 - 3540C (Continued)</b>					<b>Prepared: 09/22/2020 11:19</b>						
LCS (B0I0479-BS1)					<b>Analyzed: 09/23/2020 09:44</b>						
Aroclor-1016 (PCB-1016)	0.912	0.0200	0.0500	ug/100cm2	1.00		91.2	50-150			
Aroclor-1260 (PCB-1260)	1.25	0.0200	0.0500	ug/100cm2	1.00		125	50-150			
<hr/>											
Surrogate: Decachlorobiphenyl	0.0709			ug/100cm2	0.0500		142	30-150			
Surrogate: Tetrachloro-m-xylene	0.0477			ug/100cm2	0.0500		95.3	30-150			
<hr/>											
LCSD (B0I0479-BSD1)					<b>Analyzed: 09/23/2020 10:04</b>						
Aroclor-1016 (PCB-1016)	0.915	0.0200	0.0500	ug/100cm2	1.00		91.5	50-150	<1.00	40	
Aroclor-1260 (PCB-1260)	1.07	0.0200	0.0500	ug/100cm2	1.00		107	50-150	14.9	40	
<hr/>											
Surrogate: Decachlorobiphenyl	0.0566			ug/100cm2	0.0500		113	30-150			
Surrogate: Tetrachloro-m-xylene	0.0417			ug/100cm2	0.0500		83.5	30-150			



A KYZER LABS COMPANY

## AMERICAN ENVIRONMENTAL TESTING LABORATORY

2834 North Naomi Street Burbank, CA 91504 • ELAP# 1541 & 2402 • LACSD# 10181  
 TEL (888) 288-AETL • (818) 845-8200 • www.aetlab.com

NV5	AETL Job Number: BBI0259	Site: Malibu HS
3777 Long Beach Boulevard, Annex Building	Project Number: SMSD-20-9592	30215 Morning View Dr.
Long Beach, CA 90807	Project Manager: Jonathan Barkman	Malibu, CA 90265
	Project Name: Malibu High School	Reported: 09/23/2020 17:05

### Qualifiers and Definitions

Item	Definitions
% wt	Percent Weight
%REC	Percent Recovery
°C	Degrees Celsius
AETL	American Environmental Testing Laboratory, LLC
C	Carbon
CARB	California Air Resources Board
COC	Chain of Custody
DRO	Diesel Range Organics
Dup	Duplicate
ELAP	Environmental Laboratory Accreditation Program
EPA	Environmental Protection Agency
GRO	Gasoline Range Organics
HC	Hydrocarbon
LACSD	Los Angeles County Sanitation Districts
LCS	Laboratory Control Sample - A sample matrix, free from the analytes of interest, spiked with verified known amounts of analytes.
LCSD	Laboratory Control Sample Duplicate - A replicate of Laboratory Control Sample.
LOQ	Limit of Quantitation
MDL	Method Detection Limit - The minimum measured concentration of a substance that can be reported with 99% confidence. MDL is statistically derived number which is specific for each instrument, each method and each compound.
mg/kg	Miligrams per Kilogram
mg/L	Miligrams per Liter
MRO	Motor oil Range Organics
MS	Matrix Spike - A sample prepared, taken through all sample preparation and analytical steps of the procedure and analyzed as an independent test results.
MSD	Matrix Spike Duplicate - A replicate of Matrix Spike Sample.
N	No
ND	Analyte is not detected below Method Detection Limit.
ng/m3	Nanograms per cubic meter
NIOSH	National Institute for Occupational Safety and Health
nL/L	Nanoliters per Liter
NTU	Nephelometric Turbidity Units
Ohm-cm	Ohms per centimeter
OSHA	Occupational Safety and Health Administration
PCB	Polychlorinated Biphenyl
RL	Reporting Limit - The lowest concentration at which an analyte can be detected in a sample and its concentration can be reported with a specified degree of confidence, accuracy and precision. For usage at AETL, RL is equivalent to LOQ.
RPD	Relative Percent Difference



A KYZER LABS COMPANY

# AMERICAN ENVIRONMENTAL TESTING LABORATORY

2834 North Naomi Street Burbank, CA 91504 • ELAP# 1541 & 2402 • LACSD# 10181

TEL (888) 288-AETL • (818) 845-8200 • www.aetlab.com

NV5	AETL Job Number: BBI0259	Site: Malibu HS
3777 Long Beach Boulevard, Annex Building	Project Number: SMSD-20-9592	30215 Morning View Dr.
Long Beach, CA 90807	Project Manager: Jonathan Barkman	Malibu, CA 90265
	Project Name: Malibu High School	Reported: 09/23/2020 17:05

SIM	Selective Ion Monitoring
SPLP	Synthetic Precipitation Leaching Procedure
STLC	Soluble Threshold Limit Concentration
TCLP	Toxicity Characteristic Leaching Procedure
TPH	Total Petroleum Hydrocarbons
TTLC	Total Threshold Limit Concentrations
ug/kg	Micrograms per Kilogram
ug/L	Micrograms per Liter
ug/m3	Micrograms per cubic meter
WET	Waste Extraction Test
Y	Yes
ZHE	Zero Headspace Extraction





## AMERICAN ENVIRONMENTAL TESTING LABORATORY

2834 North Naomi Street Burbank, CA 91504 • ELAP# 1541 & 2402 • LACSD# 10181  
TEL (888) 288-AETL • (818) 845-8200 • www.aetlab.com

September 23, 2020

AETL Job No: BBI0260  
Received Date: 09/22/2020  
Project Number: SMSD-20-9592

NV5  
3777 Long Beach Boulevard, Annex Building  
Long Beach, CA 90807  
Telephone: (562) 495-5777

Attention: Jonathan Barkman

Project Name: MMHS  
Site: MMHS  
30215 Morning View Dr.  
Malibu, CA 90265

Enclosed please find the results of analyses for samples which were analyzed as specified on the attached chain of custody. If you have any questions concerning this report, please do not hesitate to call.

Checked By:

Harriet Torosyan  
Project Manager

Approved By:

Corey Jones  
Project Manager

## Table of Contents

---

Client Project Name: Malibu High School (SMSD-20-9592)  
Work Order Number: BBI0260

1	Cover Letter .....	1
2	Sample Condition on Receipt .....	3
3	Chain of Custody .....	4
4	Cooler Receipt Form .....	5
5	Case Narrative .....	6
6	Samples Received .....	7
7	Positive Hits Summary .....	8
8	Analytical Results .....	9
9	Quality Control Results .....	11
10	Qualifiers and Definitions .....	13



A KYZER LABS COMPANY

# AMERICAN ENVIRONMENTAL TESTING LABORATORY

2834 North Naomi Street Burbank, CA 91504 • ELAP# 1541 & 2402 • LACSD# 10181  
TEL (888) 288-AETL • (818) 845-8200 • www.aetlab.com

NV5	AETL Job Number: BBI0260	Site: MMHS
3777 Long Beach Boulevard, Annex Building	Project Number: SMSD-20-9592	30215 Morning View Dr.
Long Beach, CA 90807	Project Manager: Jonathan Barkman	Malibu, CA 90265
	Project Name: Malibu High School	Reported: 09/23/2020 17:04

## Sample Condition on Receipt

Cooler ID: Default Cooler

Temperature: 4.0 °C

Are the COCs Correct	Y		
Labels Legible	Y	Containers In Good Condition	Y
COC/Labels Agree	Y	Samples Preserved Properly	Y
Sufficient Sample Volume	Y	Sufficient Holding Time for all Tests	Y
Sample Labels intact	Y	Received on Ice	Y





A KYZER LABS COMPANY

# AMERICAN ENVIRONMENTAL TESTING LABORATORY

2834 N. NAOMI ST. BURBANK, CALIFORNIA 91504 ELAP# 1541 & 2402 LACSD# 10181

TEL (888) 288-AETL (818) 845-8200 FAX (818) 845-8840 www.aetlab.com

## COOLER RECEIPT FORM

Client Name: <i>NV5</i>			
Project Name:			
AETL Job Number: <i>BB10260</i>			
Date Received: <i>9/22/2020</i>		Received by: <i>Sergis Pireh</i>	
Carrier: <input type="checkbox"/> AETL Courier <input checked="" type="checkbox"/> Client <input type="checkbox"/> GLS <input type="checkbox"/> FedEx <input type="checkbox"/> UPS			
<input type="checkbox"/> Others:			
Samples were received in: <input checked="" type="checkbox"/> Cooler ( <i>1</i> ) <input type="checkbox"/> Other (Specify):			
Inside temperature of shipping container No 1: <i>4°C</i> , No 2: , No 3:			
Type of sample containers: <input type="checkbox"/> VOA, <input type="checkbox"/> Glass bottles, <input checked="" type="checkbox"/> Wide mouth jars, <input type="checkbox"/> HDPE bottles, <input type="checkbox"/> Metal sleeves, <input type="checkbox"/> Others (Specify):			
How are samples preserved: <input type="checkbox"/> None, <input checked="" type="checkbox"/> Ice, <input type="checkbox"/> Blue Ice, <input type="checkbox"/> Dry Ice			
<input type="checkbox"/> None, <input type="checkbox"/> HNO <sub>3</sub> , <input type="checkbox"/> NaOH, <input type="checkbox"/> ZnOAc, <input type="checkbox"/> HCl, <input type="checkbox"/> Na <sub>2</sub> S <sub>2</sub> O <sub>3</sub> , <input type="checkbox"/> MeOH			
<input checked="" type="checkbox"/> Other (Specify): <i>WIPS</i>			
	<b>Yes</b>	<b>No, explain below</b>	<b>Name, if client was notified.</b>
1. Are the COCs Correct?	✓		
2. Are the Sample labels legible?	✓		
3. Do samples match the COC?	✓		
4. Are the required analyses clear?	✓		
5. Is there enough samples for required analysis?	✓		
6. Are samples sealed with evidence tape?	N/A		
7. Are sample containers in good condition?	✓		
8. Are samples preserved?	✓		
9. Are samples preserved properly for the intended analysis?	✓		
10. Are the VOAs free of headspace?	N/A		
11. Are the jars free of headspace?	✓		

**PLEASE NOTE ALL SAMPLES WILL BE DISPOSED OF 30 DAYS AFTER RECEIVING DATE. IF AETL IS INFORMED OTHERWISE, THERE WILL BE A STORAGE CHARGE PER SAMPLE PER MONTH FOR ANY SAMPLE HELD BEYOND 30 DAYS.**

**Explain all "No" answers for above questions:**

---



---



---



---



A KYZER LABS COMPANY

## AMERICAN ENVIRONMENTAL TESTING LABORATORY

2834 North Naomi Street Burbank, CA 91504 • ELAP# 1541 & 2402 • LACSD# 10181  
TEL (888) 288-AETL • (818) 845-8200 • www.aetlab.com

NV5	AETL Job Number: BBI0260	Site: MMHS
3777 Long Beach Boulevard, Annex Building	Project Number: SMSD-20-9592	30215 Morning View Dr.
Long Beach, CA 90807	Project Manager: Jonathan Barkman	Malibu, CA 90265
	Project Name: Malibu High School	Reported: 09/23/2020 17:04

### Case Narrative

The following "Sample Received" Section summarizes the samples received and associated analyses requested as specified on the enclosed chain of custody.

Unless otherwise noted, all results of soil and solid samples are based on wet weight.

No analytical non-conformances were encountered.



A KYZER LABS COMPANY

# AMERICAN ENVIRONMENTAL TESTING LABORATORY

2834 North Naomi Street Burbank, CA 91504 • ELAP# 1541 & 2402 • LACSD# 10181  
 TEL (888) 288-AETL • (818) 845-8200 • www.aetlab.com

NV5 3777 Long Beach Boulevard, Annex Building Long Beach, CA 90807	AETL Job Number: BBI0260 Project Number: SMSD-20-9592 Project Manager: Jonathan Barkman Project Name: Malibu High School	Site: MMHS 30215 Morning View Dr. Malibu, CA 90265 Reported: 09/23/2020 17:04
--	---	--

## Samples Received

**AETL received the following samples on 09/22/2020 with the following specifications**

Project Name: MMHS Site: 30215 Morning View Dr. Malibu, CA 90265		
<b>Client ID</b> A-1		<b>Sample Date</b> 09/22/2020 9:00
<b>Lab ID</b> BBI0260-01	<b>Matrix</b> Wipe	<b>Quantity of Containers</b> 1
<b>Analysis</b> EPA 8082	<b>Units</b> ug/100cm2	<b>TAT</b> 1
<b>Client ID</b> A-2		<b>Sample Date</b> 09/22/2020 9:05
<b>Lab ID</b> BBI0260-02	<b>Matrix</b> Wipe	<b>Quantity of Containers</b> 1
<b>Analysis</b> EPA 8082	<b>Units</b> ug/100cm2	<b>TAT</b> 1
<b>Total Number of Samples received:</b>		<b>2</b>



A KYZER LABS COMPANY

# AMERICAN ENVIRONMENTAL TESTING LABORATORY

2834 North Naomi Street Burbank, CA 91504 • ELAP# 1541 & 2402 • LACSD# 10181  
 TEL (888) 288-AETL • (818) 845-8200 • www.aetlab.com

NV5 3777 Long Beach Boulevard, Annex Building Long Beach, CA 90807	AETL Job Number: BBI0260 Project Number: SMSD-20-9592 Project Manager: Jonathan Barkman Project Name: Malibu High School	Site: MMHS 30215 Morning View Dr. Malibu, CA 90265 Reported: 09/23/2020 17:04
--	---	--

## Positive Hits Summary

Lab ID	Client ID	Received			
BBI0260-01	A-1	09/22/2020 10:10			
Method	Analyte	Result	Qualifier	Unit	Analyzed
EPA 8082	Aroclor-1254 (PCB-1254)	0.793		ug/100cm2	09/23/2020 12:01





A KYZER LABS COMPANY

# AMERICAN ENVIRONMENTAL TESTING LABORATORY

2834 North Naomi Street Burbank, CA 91504 • ELAP# 1541 & 2402 • LACSD# 10181  
 TEL (888) 288-AETL • (818) 845-8200 • www.aetlab.com

NV5	AETL Job Number: BBI0260	Site: MMHS
3777 Long Beach Boulevard, Annex Building	Project Number: SMSD-20-9592	30215 Morning View Dr.
Long Beach, CA 90807	Project Manager: Jonathan Barkman	Malibu, CA 90265
	Project Name: Malibu High School	Reported: 09/23/2020 17:04

## Analytical Results

Client ID: A-1

Lab ID: BBI0260-01 (Wipe)

Sampled: 09/22/20 9:00

Analyte	Result	Qualifier	Dilution	MDL	RL	Units	Prepared Date/Time	Analyzed Date/Time	Batch	Analyst Initials	Prep. Method
---------	--------	-----------	----------	-----	----	-------	--------------------	--------------------	-------	------------------	--------------

### PCBs

Method: EPA 8082

Aroclor-1016 (PCB-1016)	ND		1	0.0200	0.0500	ug/100cm2	09/22/20 11:19	09/23/20 12:01	B0I0479	ATS	3540C
Aroclor-1221 (PCB-1221)	ND		1	0.0200	0.0500	ug/100cm2	09/22/20 11:19	09/23/20 12:01	B0I0479	ATS	3540C
Aroclor-1232 (PCB-1232)	ND		1	0.0200	0.0500	ug/100cm2	09/22/20 11:19	09/23/20 12:01	B0I0479	ATS	3540C
Aroclor-1242 (PCB-1242)	ND		1	0.0200	0.0500	ug/100cm2	09/22/20 11:19	09/23/20 12:01	B0I0479	ATS	3540C
Aroclor-1248 (PCB-1248)	ND		1	0.0200	0.0500	ug/100cm2	09/22/20 11:19	09/23/20 12:01	B0I0479	ATS	3540C
<b>Aroclor-1254 (PCB-1254)</b>	<b>0.793</b>		1	0.0200	0.0500	ug/100cm2	09/22/20 11:19	09/23/20 12:01	B0I0479	ATS	3540C
Aroclor-1260 (PCB-1260)	ND		1	0.0200	0.0500	ug/100cm2	09/22/20 11:19	09/23/20 12:01	B0I0479	ATS	3540C
Aroclor-1262 (PCB-1262)	ND		1	0.0200	0.0500	ug/100cm2	09/22/20 11:19	09/23/20 12:01	B0I0479	ATS	3540C
Aroclor-1268 (PCB-1268)	ND		1	0.0200	0.0500	ug/100cm2	09/22/20 11:19	09/23/20 12:01	B0I0479	ATS	3540C
			Recovery		Acceptance Criteria						
Surrogate: Decachlorobiphenyl	67.9%			30-150	09/22/20 11:19	09/23/20 12:01	B0I0479	ATS	3540C		
Surrogate: Tetrachloro-m-xylene	62.3%			30-150	09/22/20 11:19	09/23/20 12:01	B0I0479	ATS	3540C		



A KYZER LABS COMPANY

# AMERICAN ENVIRONMENTAL TESTING LABORATORY

2834 North Naomi Street Burbank, CA 91504 • ELAP# 1541 & 2402 • LACSD# 10181  
 TEL (888) 288-AETL • (818) 845-8200 • www.aetlab.com

NV5	AETL Job Number: BBI0260	Site: MMHS
3777 Long Beach Boulevard, Annex Building	Project Number: SMSD-20-9592	30215 Morning View Dr.
Long Beach, CA 90807	Project Manager: Jonathan Barkman	Malibu, CA 90265
	Project Name: Malibu High School	Reported: 09/23/2020 17:04

## Analytical Results

Client ID: A-2

Lab ID: BBI0260-02 (Wipe)

Sampled: 09/22/20 9:05

Analyte	Result	Qualifier	Dilution	MDL	RL	Units	Prepared Date/Time	Analyzed Date/Time	Batch	Analyst Initials	Prep. Method
---------	--------	-----------	----------	-----	----	-------	--------------------	--------------------	-------	------------------	--------------

### PCBs

Method: EPA 8082

Aroclor-1016 (PCB-1016)	ND		1	0.0200	0.0500	ug/100cm2	09/22/20 11:19	09/23/20 12:21	B0I0479	ATS	3540C
Aroclor-1221 (PCB-1221)	ND		1	0.0200	0.0500	ug/100cm2	09/22/20 11:19	09/23/20 12:21	B0I0479	ATS	3540C
Aroclor-1232 (PCB-1232)	ND		1	0.0200	0.0500	ug/100cm2	09/22/20 11:19	09/23/20 12:21	B0I0479	ATS	3540C
Aroclor-1242 (PCB-1242)	ND		1	0.0200	0.0500	ug/100cm2	09/22/20 11:19	09/23/20 12:21	B0I0479	ATS	3540C
Aroclor-1248 (PCB-1248)	ND		1	0.0200	0.0500	ug/100cm2	09/22/20 11:19	09/23/20 12:21	B0I0479	ATS	3540C
Aroclor-1254 (PCB-1254)	ND		1	0.0200	0.0500	ug/100cm2	09/22/20 11:19	09/23/20 12:21	B0I0479	ATS	3540C
Aroclor-1260 (PCB-1260)	ND		1	0.0200	0.0500	ug/100cm2	09/22/20 11:19	09/23/20 12:21	B0I0479	ATS	3540C
Aroclor-1262 (PCB-1262)	ND		1	0.0200	0.0500	ug/100cm2	09/22/20 11:19	09/23/20 12:21	B0I0479	ATS	3540C
Aroclor-1268 (PCB-1268)	ND		1	0.0200	0.0500	ug/100cm2	09/22/20 11:19	09/23/20 12:21	B0I0479	ATS	3540C

#### Recovery

Surrogate: Decachlorobiphenyl	58.0%
Surrogate: Tetrachloro-m-xylene	51.7%

#### Acceptance Criteria




A KYZER LABS COMPANY

# AMERICAN ENVIRONMENTAL TESTING LABORATORY

2834 North Naomi Street Burbank, CA 91504 • ELAP# 1541 & 2402 • LACSD# 10181  
 TEL (888) 288-AETL • (818) 845-8200 • www.aetlab.com

NV5	AETL Job Number: BBI0260	Site: MMHS
3777 Long Beach Boulevard, Annex Building	Project Number: SMSD-20-9592	30215 Morning View Dr.
Long Beach, CA 90807	Project Manager: Jonathan Barkman	Malibu, CA 90265
	Project Name: Malibu High School	Reported: 09/23/2020 17:04

## Quality Control Results

### PCBs (EPA 8082)

Analyte	Result	MDL	RL	Units	Spike Level	Source Result	%REC	%REC Limits	RPD	RPD Limit	Qualifier
<b>Batch: B0I0479 - 3540C</b>											
<b>Method Blank (B0I0479-BLK1)</b>											
Aroclor-1016 (PCB-1016)	ND	0.0200	0.0500	ug/100cm2							
Aroclor-1221 (PCB-1221)	ND	0.0200	0.0500	ug/100cm2							
Aroclor-1232 (PCB-1232)	ND	0.0200	0.0500	ug/100cm2							
Aroclor-1242 (PCB-1242)	ND	0.0200	0.0500	ug/100cm2							
Aroclor-1248 (PCB-1248)	ND	0.0200	0.0500	ug/100cm2							
Aroclor-1254 (PCB-1254)	ND	0.0200	0.0500	ug/100cm2							
Aroclor-1260 (PCB-1260)	ND	0.0200	0.0500	ug/100cm2							
Aroclor-1262 (PCB-1262)	ND	0.0200	0.0500	ug/100cm2							
Aroclor-1268 (PCB-1268)	ND	0.0200	0.0500	ug/100cm2							
Surrogate: Decachlorobiphenyl	0.0495			ug/100cm2	0.0500		99.0	30-150			
Surrogate: Tetrachloro-m-xylene	0.0367			ug/100cm2	0.0500		73.3	30-150			



A KYZER LABS COMPANY

# AMERICAN ENVIRONMENTAL TESTING LABORATORY

2834 North Naomi Street Burbank, CA 91504 • ELAP# 1541 & 2402 • LACSD# 10181  
 TEL (888) 288-AETL • (818) 845-8200 • www.aetlab.com

NV5 3777 Long Beach Boulevard, Annex Building Long Beach, CA 90807	AETL Job Number: BBI0260 Project Number: SMSD-20-9592 Project Manager: Jonathan Barkman Project Name: Malibu High School	Site: MMHS 30215 Morning View Dr. Malibu, CA 90265 Reported: 09/23/2020 17:04
--	---	--

## Quality Control Results

### PCBs (EPA 8082)

Analyte	Result	MDL	RL	Units	Spike Level	Source Result	%REC	%REC Limits	RPD	RPD Limit	Qualifier
<b>Batch: B0I0479 - 3540C (Continued)</b>					<b>Prepared: 09/22/2020 11:19</b>						
LCS (B0I0479-BS1)					<b>Analyzed: 09/23/2020 09:44</b>						
Aroclor-1016 (PCB-1016)	0.912	0.0200	0.0500	ug/100cm2	1.00		91.2	50-150			
Aroclor-1260 (PCB-1260)	1.25	0.0200	0.0500	ug/100cm2	1.00		125	50-150			
<hr/>											
Surrogate: Decachlorobiphenyl	0.0709			ug/100cm2	0.0500		142	30-150			
Surrogate: Tetrachloro-m-xylene	0.0477			ug/100cm2	0.0500		95.3	30-150			
<hr/>											
LCSD (B0I0479-BSD1)					<b>Analyzed: 09/23/2020 10:04</b>						
Aroclor-1016 (PCB-1016)	0.915	0.0200	0.0500	ug/100cm2	1.00		91.5	50-150	<1.00	40	
Aroclor-1260 (PCB-1260)	1.07	0.0200	0.0500	ug/100cm2	1.00		107	50-150	14.9	40	
<hr/>											
Surrogate: Decachlorobiphenyl	0.0566			ug/100cm2	0.0500		113	30-150			
Surrogate: Tetrachloro-m-xylene	0.0417			ug/100cm2	0.0500		83.5	30-150			



A KYZER LABS COMPANY

# AMERICAN ENVIRONMENTAL TESTING LABORATORY

2834 North Naomi Street Burbank, CA 91504 • ELAP# 1541 & 2402 • LACSD# 10181  
 TEL (888) 288-AETL • (818) 845-8200 • www.aetlab.com

NV5	AETL Job Number: BBI0260	Site: MMHS
3777 Long Beach Boulevard, Annex Building	Project Number: SMSD-20-9592	30215 Morning View Dr.
Long Beach, CA 90807	Project Manager: Jonathan Barkman	Malibu, CA 90265
	Project Name: Malibu High School	Reported: 09/23/2020 17:04

## Qualifiers and Definitions

Item	Definitions
% wt	Percent Weight
%REC	Percent Recovery
°C	Degrees Celsius
AETL	American Environmental Testing Laboratory, LLC
C	Carbon
CARB	California Air Resources Board
COC	Chain of Custody
DRO	Diesel Range Organics
Dup	Duplicate
ELAP	Environmental Laboratory Accreditation Program
EPA	Environmental Protection Agency
GRO	Gasoline Range Organics
HC	Hydrocarbon
LACSD	Los Angeles County Sanitation Districts
LCS	Laboratory Control Sample - A sample matrix, free from the analytes of interest, spiked with verified known amounts of analytes.
LCSD	Laboratory Control Sample Duplicate - A replicate of Laboratory Control Sample.
LOQ	Limit of Quantitation
MDL	Method Detection Limit - The minimum measured concentration of a substance that can be reported with 99% confidence. MDL is statistically derived number which is specific for each instrument, each method and each compound.
mg/kg	Miligrams per Kilogram
mg/L	Miligrams per Liter
MRO	Motor oil Range Organics
MS	Matrix Spike - A sample prepared, taken through all sample preparation and analytical steps of the procedure and analyzed as an independent test results.
MSD	Matrix Spike Duplicate - A replicate of Matrix Spike Sample.
N	No
ND	Analyte is not detected below Method Detection Limit.
ng/m3	Nanograms per cubic meter
NIOSH	National Institute for Occupational Safety and Health
nL/L	Nanoliters per Liter
NTU	Nephelometric Turbidity Units
Ohm-cm	Ohms per centimeter
OSHA	Occupational Safety and Health Administration
PCB	Polychlorinated Biphenyl
RL	Reporting Limit - The lowest concentration at which an analyte can be detected in a sample and its concentration can be reported with a specified degree of confidence, accuracy and precision. For usage at AETL, RL is equivalent to LOQ.
RPD	Relative Percent Difference



A KYZER LABS COMPANY

# AMERICAN ENVIRONMENTAL TESTING LABORATORY

2834 North Naomi Street Burbank, CA 91504 • ELAP# 1541 & 2402 • LACSD# 10181

TEL (888) 288-AETL • (818) 845-8200 • www.aetlab.com

NV5	AETL Job Number: BBI0260	Site: MMHS
3777 Long Beach Boulevard, Annex Building	Project Number: SMSD-20-9592	30215 Morning View Dr.
Long Beach, CA 90807	Project Manager: Jonathan Barkman	Malibu, CA 90265
	Project Name: Malibu High School	Reported: 09/23/2020 17:04

SIM	Selective Ion Monitoring
SPLP	Synthetic Precipitation Leaching Procedure
STLC	Soluble Threshold Limit Concentration
TCLP	Toxicity Characteristic Leaching Procedure
TPH	Total Petroleum Hydrocarbons
TTLC	Total Threshold Limit Concentrations
ug/kg	Micrograms per Kilogram
ug/L	Micrograms per Liter
ug/m3	Micrograms per cubic meter
WET	Waste Extraction Test
Y	Yes
ZHE	Zero Headspace Extraction



## AMERICAN ENVIRONMENTAL TESTING LABORATORY

2834 North Naomi Street Burbank, CA 91504 • ELAP# 1541 & 2402 • LACSD# 10181  
TEL (888) 288-AETL • (818) 845-8200 • www.aetlab.com

September 28, 2020

AETL Job No: BBI0346  
Received Date: 09/25/2020  
Project Number: SMSD-20-9592

NV5  
3777 Long Beach Boulevard, Annex Building  
Long Beach, CA 90807  
Telephone: (562) 495-5777  
Attention: Jonathan Barkman

Project Name: MMHS  
Site: MMHS  
30215 Morning View Dr.  
Malibu, CA 90265

Enclosed please find the results of analyses for samples which were analyzed as specified on the attached chain of custody. If you have any questions concerning this report, please do not hesitate to call.

Checked By:

Harriet Torosyan  
Project Manager

Approved By:

Corey Jones  
Project Manager

Table of Contents

Client Project Name: Malibu High School (SMSD-20-9592)  
Work Order Number: BBI0346

1 Cover Letter ..... 1  
2 Sample Condition on Receipt ..... 3  
3 Chain of Custody ..... 4  
4 Cooler Receipt Form ..... 5  
5 Case Narrative ..... 6  
6 Samples Received ..... 7  
7 Positive Hits Summary ..... 8  
8 Analytical Results ..... 9  
9 Quality Control Results ..... 12  
10 Qualifiers and Definitions ..... 14





A KYZER LABS COMPANY

# AMERICAN ENVIRONMENTAL TESTING LABORATORY

2834 North Naomi Street Burbank, CA 91504 • ELAP# 1541 & 2402 • LACSD# 10181  
TEL (888) 288-AETL • (818) 845-8200 • www.aetlab.com

NV5	AETL Job Number: BBI0346	Site: MMHS
3777 Long Beach Boulevard, Annex Building	Project Number: SMSD-20-9592	30215 Morning View Dr.
Long Beach, CA 90807	Project Manager: Jonathan Barkman	Malibu, CA 90265
	Project Name: MMHS	Reported: 09/28/2020 17:45

## Sample Condition on Receipt

Cooler ID: Default Cooler

Temperature: 4.0 °C

Are the COCs Correct	Y		
Labels Legible	Y	Containers In Good Condition	Y
COC/Labels Agree	Y	Samples Preserved Properly	Y
Sufficient Sample Volume	Y	Sufficient Holding Time for all Tests	Y
Sample Labels intact	Y	Received on Ice	Y





A KYZER LABS COMPANY

# AMERICAN ENVIRONMENTAL TESTING LABORATORY

2834 N. NAOMI ST. BURBANK, CALIFORNIA 91504 ELAP# 1541 & 2402 LACSD# 10181

TEL (888) 288-AETL (818) 845-8200 FAX (818) 845-8840 www.aetlab.com

## COOLER RECEIPT FORM

Client Name: <i>NVS</i>			
Project Name:			
AETL Job Number: <i>BB10346</i>			
Date Received: <i>9/25/2020</i>		Received by: <i>Sergiy Pivch</i>	
Carrier: <input type="checkbox"/> AETL Courier <input checked="" type="checkbox"/> Client <input type="checkbox"/> GLS <input type="checkbox"/> FedEx <input type="checkbox"/> UPS			
<input type="checkbox"/> Others:			
Samples were received in: <input checked="" type="checkbox"/> Cooler ( <i>1</i> ) <input type="checkbox"/> Other (Specify):			
Inside temperature of shipping container No 1: <i>4°C</i> , No 2: _____, No 3: _____			
Type of sample containers: <input type="checkbox"/> VOA, <input type="checkbox"/> Glass bottles, <input checked="" type="checkbox"/> Wide mouth jars, <input type="checkbox"/> HDPE bottles, <input type="checkbox"/> Metal sleeves, <input type="checkbox"/> Others (Specify):			
How are samples preserved: <input type="checkbox"/> None, <input checked="" type="checkbox"/> Ice, <input type="checkbox"/> Blue Ice, <input type="checkbox"/> Dry Ice			
<input checked="" type="checkbox"/> None, <input type="checkbox"/> HNO <sub>3</sub> , <input type="checkbox"/> NaOH, <input type="checkbox"/> ZnOAc, <input type="checkbox"/> HCl, <input type="checkbox"/> Na <sub>2</sub> S <sub>2</sub> O <sub>3</sub> , <input type="checkbox"/> MeOH			
<input type="checkbox"/> Other (Specify):			
	<b>Yes</b>	<b>No, explain below</b>	<b>Name, if client was notified.</b>
1. Are the COCs Correct?	<i>✓</i>		
2. Are the Sample labels legible?	<i>✓</i>		
3. Do samples match the COC?	<i>✓</i>		
4. Are the required analyses clear?	<i>✓</i>		
5. Is there enough samples for required analysis?	<i>✓</i>		
6. Are samples sealed with evidence tape?	<i>N/A</i>		
7. Are sample containers in good condition?	<i>✓</i>		
8. Are samples preserved?	<i>✓</i>		
9. Are samples preserved properly for the intended analysis?	<i>✓</i>		
10. Are the VOAs free of headspace?	<i>N/A</i>		
11. Are the jars free of headspace?	<i>✓</i>		

**PLEASE NOTE ALL SAMPLES WILL BE DISPOSED OF 30 DAYS AFTER RECEIVING DATE. IF AETL IS INFORMED OTHERWISE, THERE WILL BE A STORAGE CHARGE PER SAMPLE PER MONTH FOR ANY SAMPLE HELD BEYOND 30 DAYS.**

**Explain all "No" answers for above questions:**

---



---



---



A KYZER LABS COMPANY

# AMERICAN ENVIRONMENTAL TESTING LABORATORY

2834 North Naomi Street Burbank, CA 91504 • ELAP# 1541 & 2402 • LACSD# 10181  
TEL (888) 288-AETL • (818) 845-8200 • www.aetlab.com

NV5	AETL Job Number: BBI0346	Site: MMHS
3777 Long Beach Boulevard, Annex Building	Project Number: SMSD-20-9592	30215 Morning View Dr.
Long Beach, CA 90807	Project Manager: Jonathan Barkman	Malibu, CA 90265
	Project Name: MMHS	Reported: 09/28/2020 17:45

## Case Narrative

The following "Sample Received" Section summarizes the samples received and associated analyses requested as specified on the enclosed chain of custody.

Unless otherwise noted, all results of soil and solid samples are based on wet weight.

No analytical non-conformances were encountered.



A KYZER LABS COMPANY

# AMERICAN ENVIRONMENTAL TESTING LABORATORY

2834 North Naomi Street Burbank, CA 91504 • ELAP# 1541 & 2402 • LACSD# 10181  
 TEL (888) 288-AETL • (818) 845-8200 • www.aetlab.com

NV5 3777 Long Beach Boulevard, Annex Building Long Beach, CA 90807	AETL Job Number: BBI0346 Project Number: SMSD-20-9592 Project Manager: Jonathan Barkman Project Name: MMHS	Site: MMHS 30215 Morning View Dr. Malibu, CA 90265 Reported: 09/28/2020 17:45
--	---	--

## Samples Received

**AETL received the following samples on 09/25/2020 with the following specifications**

Project Name: MMHS Site: 30215 Morning View Dr. Malibu, CA 90265		
<b>Client ID</b> 905-A-1		<b>Sample Date</b> 09/25/2020 13:45
<b>Lab ID</b> BBI0346-01	<b>Matrix</b> Wipe	<b>Quantity of Containers</b> 1
<b>Analysis</b> EPA 8082	<b>Units</b> ug/100cm2	<b>TAT</b> 1
<b>Client ID</b> 905-A-2		<b>Sample Date</b> 09/25/2020 13:50
<b>Lab ID</b> BBI0346-02	<b>Matrix</b> Wipe	<b>Quantity of Containers</b> 1
<b>Analysis</b> EPA 8082	<b>Units</b> ug/100cm2	<b>TAT</b> 1
<b>Client ID</b> 905-A-3		<b>Sample Date</b> 09/25/2020 13:55
<b>Lab ID</b> BBI0346-03	<b>Matrix</b> Wipe	<b>Quantity of Containers</b> 1
<b>Analysis</b> EPA 8082	<b>Units</b> ug/100cm2	<b>TAT</b> 1

**Total Number of Samples received: 3**



A KYZER LABS COMPANY

# AMERICAN ENVIRONMENTAL TESTING LABORATORY

2834 North Naomi Street Burbank, CA 91504 • ELAP# 1541 & 2402 • LACSD# 10181  
 TEL (888) 288-AETL • (818) 845-8200 • www.aetlab.com

NV5 3777 Long Beach Boulevard, Annex Building Long Beach, CA 90807	AETL Job Number: BBI0346 Project Number: SMSD-20-9592 Project Manager: Jonathan Barkman Project Name: MMHS	Site: MMHS 30215 Morning View Dr. Malibu, CA 90265 Reported: 09/28/2020 17:45
--	---	--

## Positive Hits Summary

Lab ID	Client ID	Method	Analyte	Result	Qualifier	Unit	Received
BBI0346-02	905-A-2	EPA 8082	Aroclor-1254 (PCB-1254)	2.19		ug/100cm2	09/25/2020 15:20 Analyzed
							09/28/2020 11:44

Lab ID	Client ID	Method	Analyte	Result	Qualifier	Unit	Received
BBI0346-03	905-A-3	EPA 8082	Aroclor-1254 (PCB-1254)	0.685		ug/100cm2	09/25/2020 15:20 Analyzed
							09/28/2020 12:04



A KYZER LABS COMPANY

# AMERICAN ENVIRONMENTAL TESTING LABORATORY

2834 North Naomi Street Burbank, CA 91504 • ELAP# 1541 & 2402 • LACSD# 10181  
 TEL (888) 288-AETL • (818) 845-8200 • www.aetlab.com

NV5	AETL Job Number: BBI0346	Site: MMHS
3777 Long Beach Boulevard, Annex Building	Project Number: SMSD-20-9592	30215 Morning View Dr.
Long Beach, CA 90807	Project Manager: Jonathan Barkman	Malibu, CA 90265
	Project Name: MMHS	Reported: 09/28/2020 17:45

## Analytical Results

Client ID: 905-A-1

Lab ID: BBI0346-01 (Wipe)

Sampled: 09/25/20 13:45

Analyte	Result	Qualifier	Dilution	MDL	RL	Units	Prepared Date/Time	Analyzed Date/Time	Batch	Analyst Initials	Prep. Method
---------	--------	-----------	----------	-----	----	-------	--------------------	--------------------	-------	------------------	--------------

### PCBs

Method: EPA 8082

Aroclor-1016 (PCB-1016)	ND		1	0.0200	0.0500	ug/100cm2	09/25/20 17:00	09/28/20 11:25	B0I0594	ATS	3540C
Aroclor-1221 (PCB-1221)	ND		1	0.0200	0.0500	ug/100cm2	09/25/20 17:00	09/28/20 11:25	B0I0594	ATS	3540C
Aroclor-1232 (PCB-1232)	ND		1	0.0200	0.0500	ug/100cm2	09/25/20 17:00	09/28/20 11:25	B0I0594	ATS	3540C
Aroclor-1242 (PCB-1242)	ND		1	0.0200	0.0500	ug/100cm2	09/25/20 17:00	09/28/20 11:25	B0I0594	ATS	3540C
Aroclor-1248 (PCB-1248)	ND		1	0.0200	0.0500	ug/100cm2	09/25/20 17:00	09/28/20 11:25	B0I0594	ATS	3540C
Aroclor-1254 (PCB-1254)	ND		1	0.0200	0.0500	ug/100cm2	09/25/20 17:00	09/28/20 11:25	B0I0594	ATS	3540C
Aroclor-1260 (PCB-1260)	ND		1	0.0200	0.0500	ug/100cm2	09/25/20 17:00	09/28/20 11:25	B0I0594	ATS	3540C
Aroclor-1262 (PCB-1262)	ND		1	0.0200	0.0500	ug/100cm2	09/25/20 17:00	09/28/20 11:25	B0I0594	ATS	3540C
Aroclor-1268 (PCB-1268)	ND		1	0.0200	0.0500	ug/100cm2	09/25/20 17:00	09/28/20 11:25	B0I0594	ATS	3540C

#### Recovery

Surrogate: Decachlorobiphenyl	32.5%						09/25/20 17:00	09/28/20 11:25	B0I0594	ATS	3540C
Surrogate: Tetrachloro-m-xylene	74.9%						09/25/20 17:00	09/28/20 11:25	B0I0594	ATS	3540C

#### Acceptance Criteria

							30-150	09/25/20 17:00			
							30-150	09/25/20 17:00			



A KYZER LABS COMPANY

# AMERICAN ENVIRONMENTAL TESTING LABORATORY

2834 North Naomi Street Burbank, CA 91504 • ELAP# 1541 & 2402 • LACSD# 10181  
 TEL (888) 288-AETL • (818) 845-8200 • www.aetlab.com

NV5	AETL Job Number: BBI0346	Site: MMHS
3777 Long Beach Boulevard, Annex Building	Project Number: SMSD-20-9592	30215 Morning View Dr.
Long Beach, CA 90807	Project Manager: Jonathan Barkman	Malibu, CA 90265
	Project Name: MMHS	Reported: 09/28/2020 17:45

## Analytical Results

Client ID: 905-A-2

Lab ID: BBI0346-02 (Wipe)

Sampled: 09/25/20 13:50

Analyte	Result	Qualifier	Dilution	MDL	RL	Units	Prepared Date/Time	Analyzed Date/Time	Batch	Analyst Initials	Prep. Method
---------	--------	-----------	----------	-----	----	-------	--------------------	--------------------	-------	------------------	--------------

### PCBs

Method: EPA 8082

Aroclor-1016 (PCB-1016)	ND		1	0.0200	0.0500	ug/100cm2	09/25/20 17:00	09/28/20 11:44	B0I0594	ATS	3540C
Aroclor-1221 (PCB-1221)	ND		1	0.0200	0.0500	ug/100cm2	09/25/20 17:00	09/28/20 11:44	B0I0594	ATS	3540C
Aroclor-1232 (PCB-1232)	ND		1	0.0200	0.0500	ug/100cm2	09/25/20 17:00	09/28/20 11:44	B0I0594	ATS	3540C
Aroclor-1242 (PCB-1242)	ND		1	0.0200	0.0500	ug/100cm2	09/25/20 17:00	09/28/20 11:44	B0I0594	ATS	3540C
Aroclor-1248 (PCB-1248)	ND		1	0.0200	0.0500	ug/100cm2	09/25/20 17:00	09/28/20 11:44	B0I0594	ATS	3540C
<b>Aroclor-1254 (PCB-1254)</b>	<b>2.19</b>		1	0.0200	0.0500	ug/100cm2	09/25/20 17:00	09/28/20 11:44	B0I0594	ATS	3540C
Aroclor-1260 (PCB-1260)	ND		1	0.0200	0.0500	ug/100cm2	09/25/20 17:00	09/28/20 11:44	B0I0594	ATS	3540C
Aroclor-1262 (PCB-1262)	ND		1	0.0200	0.0500	ug/100cm2	09/25/20 17:00	09/28/20 11:44	B0I0594	ATS	3540C
Aroclor-1268 (PCB-1268)	ND		1	0.0200	0.0500	ug/100cm2	09/25/20 17:00	09/28/20 11:44	B0I0594	ATS	3540C
			Recovery		Acceptance Criteria						
Surrogate: Decachlorobiphenyl	42.0%			30-150	09/25/20 17:00	09/28/20 11:44	B0I0594	ATS	3540C		
Surrogate: Tetrachloro-m-xylene	63.0%			30-150	09/25/20 17:00	09/28/20 11:44	B0I0594	ATS	3540C		





A KYZER LABS COMPANY

# AMERICAN ENVIRONMENTAL TESTING LABORATORY

2834 North Naomi Street Burbank, CA 91504 • ELAP# 1541 & 2402 • LACSD# 10181  
 TEL (888) 288-AETL • (818) 845-8200 • www.aetlab.com

NV5	AETL Job Number: BBI0346	Site: MMHS
3777 Long Beach Boulevard, Annex Building	Project Number: SMSD-20-9592	30215 Morning View Dr.
Long Beach, CA 90807	Project Manager: Jonathan Barkman	Malibu, CA 90265
	Project Name: MMHS	Reported: 09/28/2020 17:45

## Analytical Results

Client ID: 905-A-3

Lab ID: BBI0346-03 (Wipe)

Sampled: 09/25/20 13:55

Analyte	Result	Qualifier	Dilution	MDL	RL	Units	Prepared Date/Time	Analyzed Date/Time	Batch	Analyst Initials	Prep. Method
---------	--------	-----------	----------	-----	----	-------	--------------------	--------------------	-------	------------------	--------------

### PCBs

Method: EPA 8082

Aroclor-1016 (PCB-1016)	ND		1	0.0200	0.0500	ug/100cm2	09/25/20 17:00	09/28/20 12:04	B0I0594	ATS	3540C
Aroclor-1221 (PCB-1221)	ND		1	0.0200	0.0500	ug/100cm2	09/25/20 17:00	09/28/20 12:04	B0I0594	ATS	3540C
Aroclor-1232 (PCB-1232)	ND		1	0.0200	0.0500	ug/100cm2	09/25/20 17:00	09/28/20 12:04	B0I0594	ATS	3540C
Aroclor-1242 (PCB-1242)	ND		1	0.0200	0.0500	ug/100cm2	09/25/20 17:00	09/28/20 12:04	B0I0594	ATS	3540C
Aroclor-1248 (PCB-1248)	ND		1	0.0200	0.0500	ug/100cm2	09/25/20 17:00	09/28/20 12:04	B0I0594	ATS	3540C
<b>Aroclor-1254 (PCB-1254)</b>	<b>0.685</b>		1	0.0200	0.0500	ug/100cm2	09/25/20 17:00	09/28/20 12:04	B0I0594	ATS	3540C
Aroclor-1260 (PCB-1260)	ND		1	0.0200	0.0500	ug/100cm2	09/25/20 17:00	09/28/20 12:04	B0I0594	ATS	3540C
Aroclor-1262 (PCB-1262)	ND		1	0.0200	0.0500	ug/100cm2	09/25/20 17:00	09/28/20 12:04	B0I0594	ATS	3540C
Aroclor-1268 (PCB-1268)	ND		1	0.0200	0.0500	ug/100cm2	09/25/20 17:00	09/28/20 12:04	B0I0594	ATS	3540C
			Recovery		Acceptance Criteria						
Surrogate: Decachlorobiphenyl	45.4%			30-150	09/25/20 17:00	09/28/20 12:04	B0I0594	ATS	3540C		
Surrogate: Tetrachloro-m-xylene	75.0%			30-150	09/25/20 17:00	09/28/20 12:04	B0I0594	ATS	3540C		



A KYZER LABS COMPANY

# AMERICAN ENVIRONMENTAL TESTING LABORATORY

2834 North Naomi Street Burbank, CA 91504 • ELAP# 1541 & 2402 • LACSD# 10181  
 TEL (888) 288-AETL • (818) 845-8200 • www.aetlab.com

NV5	AETL Job Number: BBI0346	Site: MMHS
3777 Long Beach Boulevard, Annex Building	Project Number: SMSD-20-9592	30215 Morning View Dr.
Long Beach, CA 90807	Project Manager: Jonathan Barkman	Malibu, CA 90265
	Project Name: MMHS	Reported: 09/28/2020 17:45

## Quality Control Results

### PCBs (EPA 8082)

Analyte	Result	MDL	RL	Units	Spike Level	Source Result	%REC	%REC Limits	RPD	RPD Limit	Qualifier
<b>Batch: B0I0594 - 3540C</b>					<b>Prepared: 09/25/2020 17:00</b>						
Method Blank (B0I0594-BLK1)					<b>Analyzed: 09/28/2020 11:05</b>						
Aroclor-1016 (PCB-1016)	ND	0.0200	0.0500	ug/100cm2							
Aroclor-1221 (PCB-1221)	ND	0.0200	0.0500	ug/100cm2							
Aroclor-1232 (PCB-1232)	ND	0.0200	0.0500	ug/100cm2							
Aroclor-1242 (PCB-1242)	ND	0.0200	0.0500	ug/100cm2							
Aroclor-1248 (PCB-1248)	ND	0.0200	0.0500	ug/100cm2							
Aroclor-1254 (PCB-1254)	ND	0.0200	0.0500	ug/100cm2							
Aroclor-1260 (PCB-1260)	ND	0.0200	0.0500	ug/100cm2							
Aroclor-1262 (PCB-1262)	ND	0.0200	0.0500	ug/100cm2							
Aroclor-1268 (PCB-1268)	ND	0.0200	0.0500	ug/100cm2							
Surrogate: Decachlorobiphenyl	0.0240			ug/100cm2	0.0500		48.0	30-150			
Surrogate: Tetrachloro-m-xylene	0.0429			ug/100cm2	0.0500		85.8	30-150			



A KYZER LABS COMPANY

# AMERICAN ENVIRONMENTAL TESTING LABORATORY

2834 North Naomi Street Burbank, CA 91504 • ELAP# 1541 & 2402 • LACSD# 10181  
 TEL (888) 288-AETL • (818) 845-8200 • www.aetlab.com

NV5	AETL Job Number: BBI0346	Site: MMHS
3777 Long Beach Boulevard, Annex Building	Project Number: SMSD-20-9592	30215 Morning View Dr.
Long Beach, CA 90807	Project Manager: Jonathan Barkman	Malibu, CA 90265
	Project Name: MMHS	Reported: 09/28/2020 17:45

## Quality Control Results

### PCBs (EPA 8082)

Analyte	Result	MDL	RL	Units	Spike Level	Source Result	%REC	%REC Limits	RPD	RPD Limit	Qualifier
<b>Batch: B0I0594 - 3540C (Continued)</b>					<b>Prepared: 09/25/2020 17:00</b>						
LCS (B0I0594-BS1)					<b>Analyzed: 09/28/2020 10:26</b>						
Aroclor-1016 (PCB-1016)	0.765	0.0200	0.0500	ug/100cm2	1.00		76.5	50-150			
Aroclor-1260 (PCB-1260)	0.699	0.0200	0.0500	ug/100cm2	1.00		69.9	50-150			
<hr/>											
Surrogate: Decachlorobiphenyl	0.0295			ug/100cm2	0.0500		59.1	30-150			
Surrogate: Tetrachloro-m-xylene	0.0381			ug/100cm2	0.0500		76.2	30-150			
<hr/>											
LCSD (B0I0594-BSD1)					<b>Analyzed: 09/28/2020 10:45</b>						
Aroclor-1016 (PCB-1016)	0.981	0.0200	0.0500	ug/100cm2	1.00		98.1	50-150	24.7	40	
Aroclor-1260 (PCB-1260)	0.732	0.0200	0.0500	ug/100cm2	1.00		73.2	50-150	4.64	40	
<hr/>											
Surrogate: Decachlorobiphenyl	0.0218			ug/100cm2	0.0500		43.5	30-150			
Surrogate: Tetrachloro-m-xylene	0.0423			ug/100cm2	0.0500		84.7	30-150			



A KYZER LABS COMPANY

# AMERICAN ENVIRONMENTAL TESTING LABORATORY

2834 North Naomi Street Burbank, CA 91504 • ELAP# 1541 & 2402 • LACSD# 10181  
 TEL (888) 288-AETL • (818) 845-8200 • www.aetlab.com

NV5	AETL Job Number: BBI0346	Site: MMHS
3777 Long Beach Boulevard, Annex Building	Project Number: SMSD-20-9592	30215 Morning View Dr.
Long Beach, CA 90807	Project Manager: Jonathan Barkman	Malibu, CA 90265
	Project Name: MMHS	Reported: 09/28/2020 17:45

## Qualifiers and Definitions

Item	Definitions
% wt	Percent Weight
%REC	Percent Recovery
°C	Degrees Celsius
AETL	American Environmental Testing Laboratory, LLC
C	Carbon
CARB	California Air Resources Board
COC	Chain of Custody
DRO	Diesel Range Organics
Dup	Duplicate
ELAP	Environmental Laboratory Accreditation Program
EPA	Environmental Protection Agency
GRO	Gasoline Range Organics
HC	Hydrocarbon
LACSD	Los Angeles County Sanitation Districts
LCS	Laboratory Control Sample - A sample matrix, free from the analytes of interest, spiked with verified known amounts of analytes.
LCSD	Laboratory Control Sample Duplicate - A replicate of Laboratory Control Sample.
LOQ	Limit of Quantitation
MDL	Method Detection Limit - The minimum measured concentration of a substance that can be reported with 99% confidence. MDL is statistically derived number which is specific for each instrument, each method and each compound.
mg/kg	Miligrams per Kilogram
mg/L	Miligrams per Liter
MRO	Motor oil Range Organics
MS	Matrix Spike - A sample prepared, taken through all sample preparation and analytical steps of the procedure and analyzed as an independent test results.
MSD	Matrix Spike Duplicate - A replicate of Matrix Spike Sample.
N	No
ND	Analyte is not detected below Method Detection Limit.
ng/m3	Nanograms per cubic meter
NIOSH	National Institute for Occupational Safety and Health
nL/L	Nanoliters per Liter
NTU	Nephelometric Turbidity Units
Ohm-cm	Ohms per centimeter
OSHA	Occupational Safety and Health Administration
PCB	Polychlorinated Biphenyl
RL	Reporting Limit - The lowest concentration at which an analyte can be detected in a sample and its concentration can be reported with a specified degree of confidence, accuracy and precision. For usage at AETL, RL is equivalent to LOQ.
RPD	Relative Percent Difference



A KYZER LABS COMPANY

# AMERICAN ENVIRONMENTAL TESTING LABORATORY

2834 North Naomi Street Burbank, CA 91504 • ELAP# 1541 & 2402 • LACSD# 10181

TEL (888) 288-AETL • (818) 845-8200 • www.aetlab.com

NV5	AETL Job Number: BBI0346	Site: MMHS
3777 Long Beach Boulevard, Annex Building	Project Number: SMSD-20-9592	30215 Morning View Dr.
Long Beach, CA 90807	Project Manager: Jonathan Barkman	Malibu, CA 90265
	Project Name: MMHS	Reported: 09/28/2020 17:45

SIM	Selective Ion Monitoring
SPLP	Synthetic Precipitation Leaching Procedure
STLC	Soluble Threshold Limit Concentration
TCLP	Toxicity Characteristic Leaching Procedure
TPH	Total Petroleum Hydrocarbons
TTLC	Total Threshold Limit Concentrations
ug/kg	Micrograms per Kilogram
ug/L	Micrograms per Liter
ug/m3	Micrograms per cubic meter
WET	Waste Extraction Test
Y	Yes
ZHE	Zero Headspace Extraction



## AMERICAN ENVIRONMENTAL TESTING LABORATORY

2834 North Naomi Street Burbank, CA 91504 • ELAP# 1541 & 2402 • LACSD# 10181  
TEL (888) 288-AETL • (818) 845-8200 • www.aetlab.com

October 02, 2020

AETL Job No: BBJ0017  
Received Date: 10/01/2020  
Project Number: SMSD-20-9592

NV5  
3777 Long Beach Boulevard, Annex Building  
Long Beach, CA 90807  
Telephone: (562) 495-5777

Attention: Jonathan Barkman

Project Name: MMHS-Bldg J  
Site: Malibu High School  
Morning View Drive  
Malibu, CA

Enclosed please find the results of analyses for samples which were analyzed as specified on the attached chain of custody. If you have any questions concerning this report, please do not hesitate to call.

Checked By:

Harriet Torosyan  
Project Manager

Approved By:

Corey Jones  
Project Manager

## Table of Contents

---

Client Project Name: Malibu High School (SMSD-20-9592)  
Work Order Number: BBJ0017

1	Cover Letter .....	1
2	Sample Condition on Receipt .....	3
3	Chain of Custody .....	4
4	Cooler Receipt Form .....	5
5	Case Narrative .....	6
6	Samples Received .....	7
7	Positive Hits Summary .....	8
8	Analytical Results .....	9
9	Quality Control Results .....	11
10	Qualifiers and Definitions .....	13



A KYZER LABS COMPANY

# AMERICAN ENVIRONMENTAL TESTING LABORATORY

2834 North Naomi Street Burbank, CA 91504 • ELAP# 1541 & 2402 • LACSD# 10181  
TEL (888) 288-AETL • (818) 845-8200 • www.aetlab.com

NV5	AETL Job Number: BBJ0017	Site: Malibu High School
3777 Long Beach Boulevard, Annex Building	Project Number: SMSD-20-9592	Morning View Drive
Long Beach, CA 90807	Attention: Jonathan Barkman	Malibu, CA
	Project Name: MMHS-Bldg J	Reported: 10/02/2020 16:16

## Sample Condition on Receipt

Cooler ID: Default Cooler

Temperature: 3.1 °C

Are the COCs Correct	Y		
Labels Legible	Y	Containers In Good Condition	Y
COC/Labels Agree	Y	Samples Preserved Properly	Y
Sufficient Sample Volume	Y	Sufficient Holding Time for all Tests	Y
Sample Labels intact	Y	Received on Ice	Y







# AMERICAN ENVIRONMENTAL TESTING LABORATORY

2834 N. NAOMI ST. BURBANK, CALIFORNIA 91504 ELAP# 1541 & 2402 LACSD# 10181  
 TEL (888) 288-AETL (818) 845-8200 FAX (818) 845-8840 www.aetlab.com

## COOLER RECEIPT FORM

Client Name: <u>NV5</u>			
Project Name:			
AETL Job Number: <u>BBJ0017</u>			
Date Received: <u>10/01/2020</u>		Received by: <u>Greta Giregyosian</u>	
Carrier: <input checked="" type="checkbox"/> AETL Courier <input type="checkbox"/> Client <input type="checkbox"/> GLS <input type="checkbox"/> FedEx <input type="checkbox"/> UPS			
<input type="checkbox"/> Others:			
Samples were received in: <input checked="" type="checkbox"/> Cooler ( <u>1</u> ) <input type="checkbox"/> Other (Specify):			
Inside temperature of shipping container No 1: <u>3.1</u> °C, No 2: _____, No 3: _____			
Type of sample containers: <input type="checkbox"/> VOA, <input type="checkbox"/> Glass bottles, <input checked="" type="checkbox"/> Wide mouth jars, <input type="checkbox"/> HDPE bottles, <input type="checkbox"/> Metal sleeves, <input type="checkbox"/> Others (Specify):			
How are samples preserved: <input type="checkbox"/> None, <input checked="" type="checkbox"/> Ice, <input type="checkbox"/> Blue Ice, <input type="checkbox"/> Dry Ice			
<input checked="" type="checkbox"/> None, <input type="checkbox"/> HNO <sub>3</sub> , <input type="checkbox"/> NaOH, <input type="checkbox"/> ZnOAc, <input type="checkbox"/> HCl, <input type="checkbox"/> Na <sub>2</sub> S <sub>2</sub> O <sub>3</sub> , <input type="checkbox"/> MeOH			
<input type="checkbox"/> Other (Specify):			
	<b>Yes</b>	<b>No, explain below</b>	<b>Name, if client was notified.</b>
1. Are the COCs Correct?	✓		
2. Are the Sample labels legible?	✓		
3. Do samples match the COC?	✓		
4. Are the required analyses clear?	✓		
5. Is there enough samples for required analysis?	✓		
6. Are samples sealed with evidence tape?	N/A		
7. Are sample containers in good condition?	✓		
8. Are samples preserved?	✓		
9. Are samples preserved properly for the intended analysis?	✓		
10. Are the VOAs free of headspace?	N/A		
11. Are the jars free of headspace?	N/A		

**PLEASE NOTE ALL SAMPLES WILL BE DISPOSED OF 30 DAYS AFTER RECEIVING DATE. IF AETL IS INFORMED OTHERWISE, THERE WILL BE A STORAGE CHARGE PER SAMPLE PER MONTH FOR ANY SAMPLE HELD BEYOND 30 DAYS.**

**Explain all "No" answers for above questions:**

---



---



---



---



A KYZER LABS COMPANY

# AMERICAN ENVIRONMENTAL TESTING LABORATORY

2834 North Naomi Street Burbank, CA 91504 • ELAP# 1541 & 2402 • LACSD# 10181  
TEL (888) 288-AETL • (818) 845-8200 • www.aetlab.com

NV5	AETL Job Number: BBJ0017	Site: Malibu High School
3777 Long Beach Boulevard, Annex Building	Project Number: SMSD-20-9592	Morning View Drive
Long Beach, CA 90807	Attention: Jonathan Barkman	Malibu, CA
	Project Name: MMHS-Bldg J	Reported: 10/02/2020 16:16

## Case Narrative

The following "Sample Received" Section summarizes the samples received and associated analyses requested as specified on the enclosed chain of custody.

Results as reported by the laboratory apply only to 1) the items tested, 2) as the samples are received, and 3) the accuracy of information provided. Information supplied by the customer that may affect validity of results and may be contained in this report include Project Name/Number, Site Location, Sample Locations, Sampling Dates/Times, Sample ID, Sample Preservation, Sample Matrix, Sample Properties, Field Blanks, Field Duplicates, Field Spikes, and Site Historical Data.

Accreditation applies only to the test methods listed on each scope of accreditation held by the laboratory; certifications held by the laboratory may not apply to results supplied in this report.

Unless otherwise noted, all results of soil and solid samples are based on wet weight.

No analytical non-conformances were encountered.



A KYZER LABS COMPANY

# AMERICAN ENVIRONMENTAL TESTING LABORATORY

2834 North Naomi Street Burbank, CA 91504 • ELAP# 1541 & 2402 • LACSD# 10181  
 TEL (888) 288-AETL • (818) 845-8200 • www.aetlab.com

NV5 3777 Long Beach Boulevard, Annex Building Long Beach, CA 90807	AETL Job Number: BBJ0017 Project Number: SMSD-20-9592 Attention: Jonathan Barkman Project Name: MMHS-Bldg J	Site: Malibu High School Morning View Drive Malibu, CA Reported: 10/02/2020 16:16
--	--	--

## Samples Received

**AETL received the following samples on 10/01/2020 with the following specifications**

Project Name: Malibu High School  
 Site: Morning View Drive  
 Malibu, CA

Client ID	Matrix	Sample Date
J705-1		09/30/2020 14:05
Lab ID		Quantity of Containers
BBJ0017-01	Wipe	1
Analysis	Units	TAT
EPA 8082	ug/100cm2	1

Client ID	Matrix	Sample Date
J722-2		09/30/2020 14:15
Lab ID		Quantity of Containers
BBJ0017-02	Wipe	1
Analysis	Units	TAT
EPA 8082	ug/100cm2	1

**Total Number of Samples received: 2**



A KYZER LABS COMPANY

# AMERICAN ENVIRONMENTAL TESTING LABORATORY

2834 North Naomi Street Burbank, CA 91504 • ELAP# 1541 & 2402 • LACSD# 10181  
 TEL (888) 288-AETL • (818) 845-8200 • www.aetlab.com

NV5	AETL Job Number: BBJ0017	Site: Malibu High School
3777 Long Beach Boulevard, Annex Building	Project Number: SMSD-20-9592	Morning View Drive
Long Beach, CA 90807	Attention: Jonathan Barkman	Malibu, CA
	Project Name: MMHS-Bldg J	Reported: 10/02/2020 16:16

## Positive Hits Summary

Lab ID	Client ID	Received
<b>BBJ0017-01</b>	J705-1	10/01/2020 15:36
Method	Analyte	Analyzed
EPA 8082	Aroclor-1260 (PCB-1260)	10/02/2020 14:39
		Result: 3.19
		Qualifier: D
		Unit: ug/100cm2

Lab ID	Client ID	Received
<b>BBJ0017-02</b>	J722-2	10/01/2020 15:36
Method	Analyte	Analyzed
EPA 8082	Aroclor-1260 (PCB-1260)	10/02/2020 14:59
		Result: 0.391
		Unit: ug/100cm2



A KYZER LABS COMPANY

# AMERICAN ENVIRONMENTAL TESTING LABORATORY

2834 North Naomi Street Burbank, CA 91504 • ELAP# 1541 & 2402 • LACSD# 10181  
 TEL (888) 288-AETL • (818) 845-8200 • www.aetlab.com

NV5	AETL Job Number: BBJ0017	Site: Malibu High School
3777 Long Beach Boulevard, Annex Building	Project Number: SMSD-20-9592	Morning View Drive
Long Beach, CA 90807	Attention: Jonathan Barkman	Malibu, CA
	Project Name: MMHS-Bldg J	Reported: 10/02/2020 16:16

## Analytical Results

Client ID: J705-1

Lab ID: BBJ0017-01 (Wipe)

Sampled: 09/30/20 14:05

Analyte	Result	Qualifier	Dilution	MDL	RL	Units	Prepared Date/Time	Analyzed Date/Time	Batch	Analyst Initials	Prep. Method
---------	--------	-----------	----------	-----	----	-------	--------------------	--------------------	-------	------------------	--------------

### PCBs

Method: EPA 8082

Aroclor-1016 (PCB-1016)	ND		1	0.0200	0.0500	ug/100cm2	10/01/20 15:16	10/02/20 14:39	BJ00037	ATS	3540C
Aroclor-1221 (PCB-1221)	ND		1	0.0200	0.0500	ug/100cm2	10/01/20 15:16	10/02/20 14:39	BJ00037	ATS	3540C
Aroclor-1232 (PCB-1232)	ND		1	0.0200	0.0500	ug/100cm2	10/01/20 15:16	10/02/20 14:39	BJ00037	ATS	3540C
Aroclor-1242 (PCB-1242)	ND		1	0.0200	0.0500	ug/100cm2	10/01/20 15:16	10/02/20 14:39	BJ00037	ATS	3540C
Aroclor-1248 (PCB-1248)	ND		1	0.0200	0.0500	ug/100cm2	10/01/20 15:16	10/02/20 14:39	BJ00037	ATS	3540C
Aroclor-1254 (PCB-1254)	ND		1	0.0200	0.0500	ug/100cm2	10/01/20 15:16	10/02/20 14:39	BJ00037	ATS	3540C
<b>Aroclor-1260 (PCB-1260)</b>	<b>3.19</b>	D	2	0.0400	0.100	ug/100cm2	10/01/20 15:16	10/02/20 14:39	BJ00037	ATS	3540C
Aroclor-1262 (PCB-1262)	ND		1	0.0200	0.0500	ug/100cm2	10/01/20 15:16	10/02/20 14:39	BJ00037	ATS	3540C
Aroclor-1268 (PCB-1268)	ND		1	0.0200	0.0500	ug/100cm2	10/01/20 15:16	10/02/20 14:39	BJ00037	ATS	3540C
			Recovery		Acceptance Criteria						
Surrogate: Decachlorobiphenyl	30.0%			30-150	10/01/20 15:16	10/02/20 14:39	BJ00037	ATS	3540C		
Surrogate: Tetrachloro-m-xylene	52.4%			30-150	10/01/20 15:16	10/02/20 14:39	BJ00037	ATS	3540C		



A KYZER LABS COMPANY

# AMERICAN ENVIRONMENTAL TESTING LABORATORY

2834 North Naomi Street Burbank, CA 91504 • ELAP# 1541 & 2402 • LACSD# 10181  
 TEL (888) 288-AETL • (818) 845-8200 • www.aetlab.com

NV5	AETL Job Number: BBJ0017	Site: Malibu High School
3777 Long Beach Boulevard, Annex Building	Project Number: SMSD-20-9592	Morning View Drive
Long Beach, CA 90807	Attention: Jonathan Barkman	Malibu, CA
	Project Name: MMHS-Bldg J	Reported: 10/02/2020 16:16

## Analytical Results

Client ID: J722-2

Lab ID: BBJ0017-02 (Wipe)

Sampled: 09/30/20 14:15

Analyte	Result	Qualifier	Dilution	MDL	RL	Units	Prepared Date/Time	Analyzed Date/Time	Batch	Analyst Initials	Prep. Method
---------	--------	-----------	----------	-----	----	-------	--------------------	--------------------	-------	------------------	--------------

### PCBs

Method: EPA 8082

Aroclor-1016 (PCB-1016)	ND		1	0.0200	0.0500	ug/100cm2	10/01/20 15:16	10/02/20 14:59	BJ00037	ATS	3540C
Aroclor-1221 (PCB-1221)	ND		1	0.0200	0.0500	ug/100cm2	10/01/20 15:16	10/02/20 14:59	BJ00037	ATS	3540C
Aroclor-1232 (PCB-1232)	ND		1	0.0200	0.0500	ug/100cm2	10/01/20 15:16	10/02/20 14:59	BJ00037	ATS	3540C
Aroclor-1242 (PCB-1242)	ND		1	0.0200	0.0500	ug/100cm2	10/01/20 15:16	10/02/20 14:59	BJ00037	ATS	3540C
Aroclor-1248 (PCB-1248)	ND		1	0.0200	0.0500	ug/100cm2	10/01/20 15:16	10/02/20 14:59	BJ00037	ATS	3540C
Aroclor-1254 (PCB-1254)	ND		1	0.0200	0.0500	ug/100cm2	10/01/20 15:16	10/02/20 14:59	BJ00037	ATS	3540C
<b>Aroclor-1260 (PCB-1260)</b>	<b>0.391</b>		1	0.0200	0.0500	ug/100cm2	10/01/20 15:16	10/02/20 14:59	BJ00037	ATS	3540C
Aroclor-1262 (PCB-1262)	ND		1	0.0200	0.0500	ug/100cm2	10/01/20 15:16	10/02/20 14:59	BJ00037	ATS	3540C
Aroclor-1268 (PCB-1268)	ND		1	0.0200	0.0500	ug/100cm2	10/01/20 15:16	10/02/20 14:59	BJ00037	ATS	3540C
			Recovery		Acceptance Criteria						
Surrogate: Decachlorobiphenyl	43.7%										
Surrogate: Tetrachloro-m-xylene	94.8%										



A KYZER LABS COMPANY

# AMERICAN ENVIRONMENTAL TESTING LABORATORY

2834 North Naomi Street Burbank, CA 91504 • ELAP# 1541 & 2402 • LACSD# 10181  
 TEL (888) 288-AETL • (818) 845-8200 • www.aetlab.com

NV5	AETL Job Number: BBJ0017	Site: Malibu High School
3777 Long Beach Boulevard, Annex Building	Project Number: SMSD-20-9592	Morning View Drive
Long Beach, CA 90807	Attention: Jonathan Barkman	Malibu, CA
	Project Name: MMHS-Bldg J	Reported: 10/02/2020 16:16

## Quality Control Results

### PCBs (EPA 8082)

Analyte	Result	MDL	RL	Units	Spike Level	Source Result	%REC	%REC Limits	RPD	RPD Limit	Qualifier
<b>Batch: B0J0037 - 3540C</b>											
Method Blank (B0J0037-BLK1)											
Prepared: 10/01/2020 15:16											
Analyzed: 10/02/2020 13:01											
Aroclor-1016 (PCB-1016)	ND	0.0200	0.0500	ug/100cm2							
Aroclor-1221 (PCB-1221)	ND	0.0200	0.0500	ug/100cm2							
Aroclor-1232 (PCB-1232)	ND	0.0200	0.0500	ug/100cm2							
Aroclor-1242 (PCB-1242)	ND	0.0200	0.0500	ug/100cm2							
Aroclor-1248 (PCB-1248)	ND	0.0200	0.0500	ug/100cm2							
Aroclor-1254 (PCB-1254)	ND	0.0200	0.0500	ug/100cm2							
Aroclor-1260 (PCB-1260)	ND	0.0200	0.0500	ug/100cm2							
Aroclor-1262 (PCB-1262)	ND	0.0200	0.0500	ug/100cm2							
Aroclor-1268 (PCB-1268)	ND	0.0200	0.0500	ug/100cm2							
Surrogate: Decachlorobiphenyl	0.0294			ug/100cm2	0.0500		58.8	30-150			
Surrogate: Tetrachloro-m-xylene	0.0268			ug/100cm2	0.0500		53.5	30-150			





A KYZER LABS COMPANY

# AMERICAN ENVIRONMENTAL TESTING LABORATORY

2834 North Naomi Street Burbank, CA 91504 • ELAP# 1541 & 2402 • LACSD# 10181  
 TEL (888) 288-AETL • (818) 845-8200 • www.aetlab.com

NV5	AETL Job Number: BBJ0017	Site: Malibu High School
3777 Long Beach Boulevard, Annex Building	Project Number: SMSD-20-9592	Morning View Drive
Long Beach, CA 90807	Attention: Jonathan Barkman	Malibu, CA
	Project Name: MMHS-Bldg J	Reported: 10/02/2020 16:16

## Quality Control Results

### PCBs (EPA 8082)

Analyte	Result	MDL	RL	Units	Spike Level	Source Result	%REC	%REC Limits	RPD	RPD Limit	Qualifier
<b>Batch: B0J0037 - 3540C (Continued)</b>					<b>Prepared: 10/01/2020 15:16</b>						
LCS (B0J0037-BS1)					<b>Analyzed: 10/02/2020 12:21</b>						
Aroclor-1016 (PCB-1016)	0.982	0.0200	0.0500	ug/100cm2	1.00		98.2	50-150			
Aroclor-1260 (PCB-1260)	0.822	0.0200	0.0500	ug/100cm2	1.00		82.2	50-150			
<hr/>											
Surrogate: Decachlorobiphenyl	0.0539			ug/100cm2	0.0500		108	30-150			
Surrogate: Tetrachloro-m-xylene	0.0560			ug/100cm2	0.0500		112	30-150			
<hr/>											
LCSD (B0J0037-BSD1)					<b>Analyzed: 10/02/2020 12:41</b>						
Aroclor-1016 (PCB-1016)	0.912	0.0200	0.0500	ug/100cm2	1.00		91.2	50-150	7.32	40	
Aroclor-1260 (PCB-1260)	0.818	0.0200	0.0500	ug/100cm2	1.00		81.8	50-150	<1.00	40	
<hr/>											
Surrogate: Decachlorobiphenyl	0.0556			ug/100cm2	0.0500		111	30-150			
Surrogate: Tetrachloro-m-xylene	0.0478			ug/100cm2	0.0500		95.6	30-150			



A KYZER LABS COMPANY

## AMERICAN ENVIRONMENTAL TESTING LABORATORY

2834 North Naomi Street Burbank, CA 91504 • ELAP# 1541 & 2402 • LACSD# 10181

TEL (888) 288-AETL • (818) 845-8200 • www.aetlab.com

NV5 3777 Long Beach Boulevard, Annex Building Long Beach, CA 90807	AETL Job Number: BBJ0017 Project Number: SMSD-20-9592 Attention: Jonathan Barkman Project Name: MMHS-Bldg J	Site: Malibu High School Morning View Drive Malibu, CA Reported: 10/02/2020 16:16
--	--	--

### Qualifiers and Definitions

Item	Qualifiers
D	Sample was analyzed under dilution due to matrix interference.
Item	Definitions
% wt	Percent Weight
%REC	Percent Recovery
°C	Degrees Celsius
AETL	American Environmental Testing Laboratory, LLC
C	Carbon
CARB	California Air Resources Board
COC	Chain of Custody
DRO	Diesel Range Organics
Dup	Duplicate
ELAP	Environmental Laboratory Accreditation Program
EPA	Environmental Protection Agency
GRO	Gasoline Range Organics
HC	Hydrocarbon
LACSD	Los Angeles County Sanitation Districts
LCS	Laboratory Control Sample - A sample matrix, free from the analytes of interest, spiked with verified known amounts of analytes.
LCSD	Laboratory Control Sample Duplicate - A replicate of Laboratory Control Sample.
LOQ	Limit of Quantitation
MDL	Method Detection Limit - The minimum measured concentration of a substance that can be reported with 99% confidence. MDL is statistically derived number which is specific for each instrument, each method and each compound.
mg/kg	Miligrams per Kilogram
mg/L	Miligrams per Liter
MRO	Motor oil Range Organics
MS	Matrix Spike - A sample prepared, taken through all sample preparation and analytical steps of the procedure and analyzed as an independent test results.
MSD	Matrix Spike Duplicate - A replicate of Matrix Spike Sample.
N	No
ND	Analyte is not detected below Method Detection Limit.
ng/m3	Nanograms per cubic meter
NIOSH	National Institute for Occupational Safety and Health
nL/L	Nanoliters per Liter
NTU	Nephelometric Turbidity Units
Ohm-cm	Ohms per centimeter
OSHA	Occupational Safety and Health Administration
PCB	Polychlorinated Biphenyl



A KYZER LABS COMPANY

# AMERICAN ENVIRONMENTAL TESTING LABORATORY

2834 North Naomi Street Burbank, CA 91504 • ELAP# 1541 & 2402 • LACSD# 10181  
TEL (888) 288-AETL • (818) 845-8200 • www.aetlab.com

NV5	AETL Job Number: BBJ0017	Site: Malibu High School
3777 Long Beach Boulevard, Annex Building	Project Number: SMSD-20-9592	Morning View Drive
Long Beach, CA 90807	Attention: Jonathan Barkman	Malibu, CA
	Project Name: MMHS-Bldg J	Reported: 10/02/2020 16:16

- RL Reporting Limit - The lowest concentration at which an analyte can be detected in a sample and its concentration can be reported with a specified degree of confidence, accuracy and precision. For usage at AETL, RL is equivalent to LOQ.
- RPD Relative Percent Difference
- SIM Selective Ion Monitoring
- SPLP Synthetic Precipitation Leaching Procedure
- STLC Soluble Threshold Limit Concentration
- TCLP Toxicity Characteristic Leaching Procedure
- TPH Total Petroleum Hydrocarbons
- TTLC Total Threshold Limit Concentrations
- ug/kg Micrograms per Kilogram
- ug/L Micrograms per Liter
- ug/m3 Micrograms per cubic meter
- WET Waste Extraction Test
- Y Yes
- ZHE Zero Headspace Extraction



## AMERICAN ENVIRONMENTAL TESTING LABORATORY

2834 North Naomi Street Burbank, CA 91504 • ELAP# 1541 & 2402 • LACSD# 10181  
TEL (888) 288-AETL • (818) 845-8200 • www.aetlab.com

October 02, 2020

AETL Job No: BBJ0015  
Received Date: 10/01/2020  
Project Number: SMSD-20-9592

NV5  
3777 Long Beach Boulevard, Annex Building  
Long Beach, CA 90807  
Telephone: (562) 495-5777

Attention: Jonathan Barkman

Project Name: MMHS-Bldg J  
Site: Malibu High School  
Morning Star Drive  
Malibu, CA

Enclosed please find the results of analyses for samples which were analyzed as specified on the attached chain of custody. If you have any questions concerning this report, please do not hesitate to call.

Checked By:

Harriet Torosyan  
Project Manager

Approved By:

Corey Jones  
Project Manager

# Table of Contents

Client Project Name: Malibu High School (SMSD-20-9592)  
Work Order Number: BBJ0015

1	Cover Letter .....	1
2	Sample Condition on Receipt .....	3
3	Chain of Custody .....	4
4	Cooler Receipt Form .....	5
5	Case Narrative .....	6
6	Samples Received .....	7
7	Positive Hits Summary .....	8
8	Analytical Results .....	9
9	Quality Control Results .....	12
10	Qualifiers and Definitions .....	14



A KYZER LABS COMPANY

# AMERICAN ENVIRONMENTAL TESTING LABORATORY

2834 North Naomi Street Burbank, CA 91504 • ELAP# 1541 & 2402 • LACSD# 10181  
TEL (888) 288-AETL • (818) 845-8200 • www.aetlab.com

NV5	AETL Job Number: BBJ0015	Site: Malibu High School
3777 Long Beach Boulevard, Annex Building	Project Number: SMSD-20-9592	Morning Star Drive
Long Beach, CA 90807	Attention: Jonathan Barkman	Malibu, CA
	Project Name: MMHS-Bldg J	Reported: 10/02/2020 16:15

## Sample Condition on Receipt

Cooler ID: Default Cooler

Temperature: 3.1 °C

Are the COCs Correct	Y		
Labels Legible	Y	Containers In Good Condition	Y
COC/Labels Agree	Y	Samples Preserved Properly	Y
Sufficient Sample Volume	Y	Sufficient Holding Time for all Tests	Y
Sample Labels intact	Y	Received on Ice	Y





A KYZER LABS COMPANY

# AMERICAN ENVIRONMENTAL TESTING LABORATORY

2834 N. NAOMI ST. BURBANK, CALIFORNIA 91504 ELAP# 1541 & 2402 LACSD# 10181

TEL (888) 288-AETL (818) 845-8200 FAX (818) 845-8840 www.aetlab.com

## COOLER RECEIPT FORM

Client Name: <u>NV5</u>			
Project Name:			
AETL Job Number: <u>BBJ0015</u>			
Date Received: <u>10/01/2020</u>		Received by: <u>Carpetta Garegoosian</u>	
Carrier: <input checked="" type="checkbox"/> AETL Courier <input type="checkbox"/> Client <input type="checkbox"/> GLS <input type="checkbox"/> FedEx <input type="checkbox"/> UPS			
<input type="checkbox"/> Others:			
Samples were received in: <input checked="" type="checkbox"/> Cooler ( <u>1</u> ) <input type="checkbox"/> Other (Specify):			
Inside temperature of shipping container No 1: <u>3.1</u> , No 2: , No 3:			
Type of sample containers: <input type="checkbox"/> VOA, <input type="checkbox"/> Glass bottles, <input checked="" type="checkbox"/> Wide mouth jars, <input type="checkbox"/> HDPE bottles, <input type="checkbox"/> Metal sleeves, <input type="checkbox"/> Others (Specify):			
How are samples preserved: <input type="checkbox"/> None, <input checked="" type="checkbox"/> Ice, <input type="checkbox"/> Blue Ice, <input type="checkbox"/> Dry Ice			
<input checked="" type="checkbox"/> None, <input type="checkbox"/> HNO <sub>3</sub> , <input type="checkbox"/> NaOH, <input type="checkbox"/> ZnOAc, <input type="checkbox"/> HCl, <input type="checkbox"/> Na <sub>2</sub> S <sub>2</sub> O <sub>3</sub> , <input type="checkbox"/> MeOH			
<input type="checkbox"/> Other (Specify):			
	Yes	No, explain below	Name, if client was notified.
1. Are the COCs Correct?	<input checked="" type="checkbox"/>		
2. Are the Sample labels legible?	<input checked="" type="checkbox"/>		
3. Do samples match the COC?	<input checked="" type="checkbox"/>		
4. Are the required analyses clear?	<input checked="" type="checkbox"/>		
5. Is there enough samples for required analysis?	<input checked="" type="checkbox"/>		
6. Are samples sealed with evidence tape?	<u>N/A</u>		
7. Are sample containers in good condition?	<input checked="" type="checkbox"/>		
8. Are samples preserved?	<input checked="" type="checkbox"/>		
9. Are samples preserved properly for the intended analysis?	<input checked="" type="checkbox"/>		
10. Are the VOAs free of headspace?	<u>N/A</u>		
11. Are the jars free of headspace?	<u>N/A</u>		

**PLEASE NOTE ALL SAMPLES WILL BE DISPOSED OF 30 DAYS AFTER RECEIVING DATE. IF AETL IS INFORMED OTHERWISE, THERE WILL BE A STORAGE CHARGE PER SAMPLE PER MONTH FOR ANY SAMPLE HELD BEYOND 30 DAYS.**

Explain all "No" answers for above questions:

---



---



---



---





A KYZER LABS COMPANY

# AMERICAN ENVIRONMENTAL TESTING LABORATORY

2834 North Naomi Street Burbank, CA 91504 • ELAP# 1541 & 2402 • LACSD# 10181  
TEL (888) 288-AETL • (818) 845-8200 • www.aetlab.com

NV5	AETL Job Number: BBJ0015	Site: Malibu High School
3777 Long Beach Boulevard, Annex Building	Project Number: SMSD-20-9592	Morning Star Drive
Long Beach, CA 90807	Attention: Jonathan Barkman	Malibu, CA
	Project Name: MMHS-Bldg J	Reported: 10/02/2020 16:15

## Case Narrative

The following "Sample Received" Section summarizes the samples received and associated analyses requested as specified on the enclosed chain of custody.

Results as reported by the laboratory apply only to 1) the items tested, 2) as the samples are received, and 3) the accuracy of information provided. Information supplied by the customer that may affect validity of results and may be contained in this report include Project Name/Number, Site Location, Sample Locations, Sampling Dates/Times, Sample ID, Sample Preservation, Sample Matrix, Sample Properties, Field Blanks, Field Duplicates, Field Spikes, and Site Historical Data.

Accreditation applies only to the test methods listed on each scope of accreditation held by the laboratory; certifications held by the laboratory may not apply to results supplied in this report.

Unless otherwise noted, all results of soil and solid samples are based on wet weight.

No analytical non-conformances were encountered.



A KYZER LABS COMPANY

# AMERICAN ENVIRONMENTAL TESTING LABORATORY

2834 North Naomi Street Burbank, CA 91504 • ELAP# 1541 & 2402 • LACSD# 10181  
TEL (888) 288-AETL • (818) 845-8200 • www.aetlab.com

NV5 3777 Long Beach Boulevard, Annex Building Long Beach, CA 90807	AETL Job Number: BBJ0015 Project Number: SMSD-20-9592 Attention: Jonathan Barkman Project Name: MMHS-Bldg J	Site: Malibu High School Morning Star Drive Malibu, CA Reported: 10/02/2020 16:15
--	--	--

## Samples Received

**AETL received the following samples on 10/01/2020 with the following specifications**

Project Name: Malibu High School  
Site: Morning Star Drive  
Malibu, CA

<b>Client ID</b> J714-1		<b>Sample Date</b> 09/30/2020 13:45
<b>Lab ID</b> BBJ0015-01	<b>Matrix</b> Wipe	<b>Quantity of Containers</b> 1

<b>Analysis</b> EPA 8082	<b>Units</b> ug/100cm2	<b>TAT</b> 1
-----------------------------	---------------------------	-----------------

<b>Client ID</b> J714-2		<b>Sample Date</b> 09/30/2020 13:50
<b>Lab ID</b> BBJ0015-02	<b>Matrix</b> Wipe	<b>Quantity of Containers</b> 1

<b>Analysis</b> EPA 8082	<b>Units</b> ug/100cm2	<b>TAT</b> 1
-----------------------------	---------------------------	-----------------

<b>Client ID</b> J714-3		<b>Sample Date</b> 09/30/2020 13:55
<b>Lab ID</b> BBJ0015-03	<b>Matrix</b> Wipe	<b>Quantity of Containers</b> 1

<b>Analysis</b> EPA 8082	<b>Units</b> ug/100cm2	<b>TAT</b> 1
-----------------------------	---------------------------	-----------------

**Total Number of Samples received: 3**



A KYZER LABS COMPANY

# AMERICAN ENVIRONMENTAL TESTING LABORATORY

2834 North Naomi Street Burbank, CA 91504 • ELAP# 1541 & 2402 • LACSD# 10181  
 TEL (888) 288-AETL • (818) 845-8200 • www.aetlab.com

NV5	AETL Job Number: BBJ0015	Site: Malibu High School
3777 Long Beach Boulevard, Annex Building	Project Number: SMSD-20-9592	Morning Star Drive
Long Beach, CA 90807	Attention: Jonathan Barkman	Malibu, CA
	Project Name: MMHS-Bldg J	Reported: 10/02/2020 16:15

## Positive Hits Summary

Lab ID	Client ID	Result	Qualifier	Unit	Received
<b>BBJ0015-01</b>	J714-1				10/01/2020 14:20
Method	Analyte				Analyzed
EPA 8082	Aroclor-1254 (PCB-1254)	94.6	D	ug/100cm2	10/02/2020 13:20

Lab ID	Client ID	Result	Qualifier	Unit	Received
<b>BBJ0015-02</b>	J714-2				10/01/2020 14:20
Method	Analyte				Analyzed
EPA 8082	Aroclor-1254 (PCB-1254)	1.28		ug/100cm2	10/02/2020 13:40

Lab ID	Client ID	Result	Qualifier	Unit	Received
<b>BBJ0015-03</b>	J714-3				10/01/2020 14:20
Method	Analyte				Analyzed
EPA 8082	Aroclor-1254 (PCB-1254)	0.545		ug/100cm2	10/02/2020 14:19



A KYZER LABS COMPANY

# AMERICAN ENVIRONMENTAL TESTING LABORATORY

2834 North Naomi Street Burbank, CA 91504 • ELAP# 1541 & 2402 • LACSD# 10181  
 TEL (888) 288-AETL • (818) 845-8200 • www.aetlab.com

NV5 3777 Long Beach Boulevard, Annex Building Long Beach, CA 90807	AETL Job Number: BBJ0015 Project Number: SMSD-20-9592 Attention: Jonathan Barkman Project Name: MMHS-Bldg J	Site: Malibu High School Morning Star Drive Malibu, CA Reported: 10/02/2020 16:15
--	--	--

## Analytical Results

Client ID: J714-1

Lab ID: BBJ0015-01 (Wipe)

Sampled: 09/30/20 13:45

Analyte	Result	Qualifier	Dilution	MDL	RL	Units	Prepared Date/Time	Analyzed Date/Time	Batch	Analyst Initials	Prep. Method
---------	--------	-----------	----------	-----	----	-------	--------------------	--------------------	-------	------------------	--------------

### PCBs

Method: EPA 8082

Aroclor-1016 (PCB-1016)	ND		1	0.0200	0.0500	ug/100cm2	10/01/20 15:16	10/02/20 13:20	BJ00037	ATS	3540C
Aroclor-1221 (PCB-1221)	ND		1	0.0200	0.0500	ug/100cm2	10/01/20 15:16	10/02/20 13:20	BJ00037	ATS	3540C
Aroclor-1232 (PCB-1232)	ND		1	0.0200	0.0500	ug/100cm2	10/01/20 15:16	10/02/20 13:20	BJ00037	ATS	3540C
Aroclor-1242 (PCB-1242)	ND		1	0.0200	0.0500	ug/100cm2	10/01/20 15:16	10/02/20 13:20	BJ00037	ATS	3540C
Aroclor-1248 (PCB-1248)	ND		1	0.0200	0.0500	ug/100cm2	10/01/20 15:16	10/02/20 13:20	BJ00037	ATS	3540C
<b>Aroclor-1254 (PCB-1254)</b>	<b>94.6</b>	D	50	1.00	2.50	ug/100cm2	10/01/20 15:16	10/02/20 13:20	BJ00037	ATS	3540C
Aroclor-1260 (PCB-1260)	ND		1	0.0200	0.0500	ug/100cm2	10/01/20 15:16	10/02/20 13:20	BJ00037	ATS	3540C
Aroclor-1262 (PCB-1262)	ND		1	0.0200	0.0500	ug/100cm2	10/01/20 15:16	10/02/20 13:20	BJ00037	ATS	3540C
Aroclor-1268 (PCB-1268)	ND		1	0.0200	0.0500	ug/100cm2	10/01/20 15:16	10/02/20 13:20	BJ00037	ATS	3540C
			Recovery		Acceptance Criteria						
Surrogate: Decachlorobiphenyl	41.7%			30-150		10/01/20 15:16		10/02/20 13:20	BJ00037	ATS	3540C
Surrogate: Tetrachloro-m-xylene	57.5%			30-150		10/01/20 15:16		10/02/20 13:20	BJ00037	ATS	3540C



A KYZER LABS COMPANY

# AMERICAN ENVIRONMENTAL TESTING LABORATORY

2834 North Naomi Street Burbank, CA 91504 • ELAP# 1541 & 2402 • LACSD# 10181  
 TEL (888) 288-AETL • (818) 845-8200 • www.aetlab.com

NV5	AETL Job Number: BBJ0015	Site: Malibu High School
3777 Long Beach Boulevard, Annex Building	Project Number: SMSD-20-9592	Morning Star Drive
Long Beach, CA 90807	Attention: Jonathan Barkman	Malibu, CA
	Project Name: MMHS-Bldg J	Reported: 10/02/2020 16:15

## Analytical Results

Client ID: J714-2

Lab ID: BBJ0015-02 (Wipe)

Sampled: 09/30/20 13:50

Analyte	Result	Qualifier	Dilution	MDL	RL	Units	Prepared Date/Time	Analyzed Date/Time	Batch	Analyst Initials	Prep. Method
---------	--------	-----------	----------	-----	----	-------	--------------------	--------------------	-------	------------------	--------------

### PCBs

Method: EPA 8082

Aroclor-1016 (PCB-1016)	ND		1	0.0200	0.0500	ug/100cm2	10/01/20 15:16	10/02/20 13:40	BJ00037	ATS	3540C
Aroclor-1221 (PCB-1221)	ND		1	0.0200	0.0500	ug/100cm2	10/01/20 15:16	10/02/20 13:40	BJ00037	ATS	3540C
Aroclor-1232 (PCB-1232)	ND		1	0.0200	0.0500	ug/100cm2	10/01/20 15:16	10/02/20 13:40	BJ00037	ATS	3540C
Aroclor-1242 (PCB-1242)	ND		1	0.0200	0.0500	ug/100cm2	10/01/20 15:16	10/02/20 13:40	BJ00037	ATS	3540C
Aroclor-1248 (PCB-1248)	ND		1	0.0200	0.0500	ug/100cm2	10/01/20 15:16	10/02/20 13:40	BJ00037	ATS	3540C
<b>Aroclor-1254 (PCB-1254)</b>	<b>1.28</b>		1	0.0200	0.0500	ug/100cm2	10/01/20 15:16	10/02/20 13:40	BJ00037	ATS	3540C
Aroclor-1260 (PCB-1260)	ND		1	0.0200	0.0500	ug/100cm2	10/01/20 15:16	10/02/20 13:40	BJ00037	ATS	3540C
Aroclor-1262 (PCB-1262)	ND		1	0.0200	0.0500	ug/100cm2	10/01/20 15:16	10/02/20 13:40	BJ00037	ATS	3540C
Aroclor-1268 (PCB-1268)	ND		1	0.0200	0.0500	ug/100cm2	10/01/20 15:16	10/02/20 13:40	BJ00037	ATS	3540C

#### Recovery

Surrogate: Decachlorobiphenyl	61.0%
Surrogate: Tetrachloro-m-xylene	42.8%

#### Acceptance Criteria




A KYZER LABS COMPANY

# AMERICAN ENVIRONMENTAL TESTING LABORATORY

2834 North Naomi Street Burbank, CA 91504 • ELAP# 1541 & 2402 • LACSD# 10181  
 TEL (888) 288-AETL • (818) 845-8200 • www.aetlab.com

NV5 3777 Long Beach Boulevard, Annex Building Long Beach, CA 90807	AETL Job Number: BBJ0015 Project Number: SMSD-20-9592 Attention: Jonathan Barkman Project Name: MMHS-Bldg J	Site: Malibu High School Morning Star Drive Malibu, CA Reported: 10/02/2020 16:15
--	--	--

## Analytical Results

**Client ID: J714-3**

**Lab ID: BBJ0015-03 (Wipe)**

**Sampled: 09/30/20 13:55**

Analyte	Result	Qualifier	Dilution	MDL	RL	Units	Prepared Date/Time	Analyzed Date/Time	Batch	Analyst Initials	Prep. Method
---------	--------	-----------	----------	-----	----	-------	--------------------	--------------------	-------	------------------	--------------

**PCBs**

**Method: EPA 8082**

Aroclor-1016 (PCB-1016)	ND	1	0.0200	0.0500	ug/100cm2	10/01/20 15:16	10/02/20 14:19	B0J0037	ATS	3540C
Aroclor-1221 (PCB-1221)	ND	1	0.0200	0.0500	ug/100cm2	10/01/20 15:16	10/02/20 14:19	B0J0037	ATS	3540C
Aroclor-1232 (PCB-1232)	ND	1	0.0200	0.0500	ug/100cm2	10/01/20 15:16	10/02/20 14:19	B0J0037	ATS	3540C
Aroclor-1242 (PCB-1242)	ND	1	0.0200	0.0500	ug/100cm2	10/01/20 15:16	10/02/20 14:19	B0J0037	ATS	3540C
Aroclor-1248 (PCB-1248)	ND	1	0.0200	0.0500	ug/100cm2	10/01/20 15:16	10/02/20 14:19	B0J0037	ATS	3540C
<b>Aroclor-1254 (PCB-1254)</b>	<b>0.545</b>	1	0.0200	0.0500	ug/100cm2	10/01/20 15:16	10/02/20 14:19	B0J0037	ATS	3540C
Aroclor-1260 (PCB-1260)	ND	1	0.0200	0.0500	ug/100cm2	10/01/20 15:16	10/02/20 14:19	B0J0037	ATS	3540C
Aroclor-1262 (PCB-1262)	ND	1	0.0200	0.0500	ug/100cm2	10/01/20 15:16	10/02/20 14:19	B0J0037	ATS	3540C
Aroclor-1268 (PCB-1268)	ND	1	0.0200	0.0500	ug/100cm2	10/01/20 15:16	10/02/20 14:19	B0J0037	ATS	3540C
-----										
	Recovery			Acceptance Criteria						
Surrogate: Decachlorobiphenyl	41.8%									
Surrogate: Tetrachloro-m-xylene	58.2%									



A KYZER LABS COMPANY

# AMERICAN ENVIRONMENTAL TESTING LABORATORY

2834 North Naomi Street Burbank, CA 91504 • ELAP# 1541 & 2402 • LACSD# 10181  
 TEL (888) 288-AETL • (818) 845-8200 • www.aetlab.com

NV5	AETL Job Number: BBJ0015	Site: Malibu High School
3777 Long Beach Boulevard, Annex Building	Project Number: SMSD-20-9592	Morning Star Drive
Long Beach, CA 90807	Attention: Jonathan Barkman	Malibu, CA
	Project Name: MMHS-Bldg J	Reported: 10/02/2020 16:15

## Quality Control Results

### PCBs (EPA 8082)

Analyte	Result	MDL	RL	Units	Spike Level	Source Result	%REC	%REC Limits	RPD	RPD Limit	Qualifier
<b>Batch: B0J0037 - 3540C</b>											
Method Blank (B0J0037-BLK1)											
Prepared: 10/01/2020 15:16											
Analyzed: 10/02/2020 13:01											
Aroclor-1016 (PCB-1016)	ND	0.0200	0.0500	ug/100cm2							
Aroclor-1221 (PCB-1221)	ND	0.0200	0.0500	ug/100cm2							
Aroclor-1232 (PCB-1232)	ND	0.0200	0.0500	ug/100cm2							
Aroclor-1242 (PCB-1242)	ND	0.0200	0.0500	ug/100cm2							
Aroclor-1248 (PCB-1248)	ND	0.0200	0.0500	ug/100cm2							
Aroclor-1254 (PCB-1254)	ND	0.0200	0.0500	ug/100cm2							
Aroclor-1260 (PCB-1260)	ND	0.0200	0.0500	ug/100cm2							
Aroclor-1262 (PCB-1262)	ND	0.0200	0.0500	ug/100cm2							
Aroclor-1268 (PCB-1268)	ND	0.0200	0.0500	ug/100cm2							
Surrogate: Decachlorobiphenyl	0.0294			ug/100cm2	0.0500		58.8	30-150			
Surrogate: Tetrachloro-m-xylene	0.0268			ug/100cm2	0.0500		53.5	30-150			



A KYZER LABS COMPANY

# AMERICAN ENVIRONMENTAL TESTING LABORATORY

2834 North Naomi Street Burbank, CA 91504 • ELAP# 1541 & 2402 • LACSD# 10181  
 TEL (888) 288-AETL • (818) 845-8200 • www.aetlab.com

NV5	AETL Job Number: BBJ0015	Site: Malibu High School
3777 Long Beach Boulevard, Annex Building	Project Number: SMSD-20-9592	Morning Star Drive
Long Beach, CA 90807	Attention: Jonathan Barkman	Malibu, CA
	Project Name: MMHS-Bldg J	Reported: 10/02/2020 16:15

## Quality Control Results

### PCBs (EPA 8082)

Analyte	Result	MDL	RL	Units	Spike Level	Source Result	%REC	%REC Limits	RPD	RPD Limit	Qualifier
<b>Batch: B0J0037 - 3540C (Continued)</b>					<b>Prepared: 10/01/2020 15:16</b>						
LCS (B0J0037-BS1)					<b>Analyzed: 10/02/2020 12:21</b>						
Aroclor-1016 (PCB-1016)	0.982	0.0200	0.0500	ug/100cm2	1.00		98.2	50-150			
Aroclor-1260 (PCB-1260)	0.822	0.0200	0.0500	ug/100cm2	1.00		82.2	50-150			
<hr/>											
Surrogate: Decachlorobiphenyl	0.0539			ug/100cm2	0.0500		108	30-150			
Surrogate: Tetrachloro-m-xylene	0.0560			ug/100cm2	0.0500		112	30-150			
<hr/>											
LCSD (B0J0037-BSD1)					<b>Analyzed: 10/02/2020 12:41</b>						
Aroclor-1016 (PCB-1016)	0.912	0.0200	0.0500	ug/100cm2	1.00		91.2	50-150	7.32	40	
Aroclor-1260 (PCB-1260)	0.818	0.0200	0.0500	ug/100cm2	1.00		81.8	50-150	<1.00	40	
<hr/>											
Surrogate: Decachlorobiphenyl	0.0556			ug/100cm2	0.0500		111	30-150			
Surrogate: Tetrachloro-m-xylene	0.0478			ug/100cm2	0.0500		95.6	30-150			





A KYZER LABS COMPANY

# AMERICAN ENVIRONMENTAL TESTING LABORATORY

2834 North Naomi Street Burbank, CA 91504 • ELAP# 1541 & 2402 • LACSD# 10181

TEL (888) 288-AETL • (818) 845-8200 • www.aetlab.com

NV5	AETL Job Number: BBJ0015	Site: Malibu High School
3777 Long Beach Boulevard, Annex Building	Project Number: SMSD-20-9592	Morning Star Drive
Long Beach, CA 90807	Attention: Jonathan Barkman	Malibu, CA
	Project Name: MMHS-Bldg J	Reported: 10/02/2020 16:15

## Qualifiers and Definitions

### Item Qualifiers

D Sample was analyzed under dilution due to matrix interference.

### Item Definitions

% wt	Percent Weight
%REC	Percent Recovery
°C	Degrees Celsius
AETL	American Environmental Testing Laboratory, LLC
C	Carbon
CARB	California Air Resources Board
COC	Chain of Custody
DRO	Diesel Range Organics
Dup	Duplicate
ELAP	Environmental Laboratory Accreditation Program
EPA	Environmental Protection Agency
GRO	Gasoline Range Organics
HC	Hydrocarbon
LACSD	Los Angeles County Sanitation Districts
LCS	Laboratory Control Sample - A sample matrix, free from the analytes of interest, spiked with verified known amounts of analytes.
LCSD	Laboratory Control Sample Duplicate - A replicate of Laboratory Control Sample.
LOQ	Limit of Quantitation
MDL	Method Detection Limit - The minimum measured concentration of a substance that can be reported with 99% confidence. MDL is statistically derived number which is specific for each instrument, each method and each compound.
mg/kg	Miligrams per Kilogram
mg/L	Miligrams per Liter
MRO	Motor oil Range Organics
MS	Matrix Spike - A sample prepared, taken through all sample preparation and analytical steps of the procedure and analyzed as an independent test results.
MSD	Matrix Spike Duplicate - A replicate of Matrix Spike Sample.
N	No
ND	Analyte is not detected below Method Detection Limit.
ng/m3	Nanograms per cubic meter
NIOSH	National Institute for Occupational Safety and Health
nL/L	Nanoliters per Liter
NTU	Nephelometric Turbidity Units
Ohm-cm	Ohms per centimeter
OSHA	Occupational Safety and Health Administration
PCB	Polychlorinated Biphenyl



A KYZER LABS COMPANY

# AMERICAN ENVIRONMENTAL TESTING LABORATORY

2834 North Naomi Street Burbank, CA 91504 • ELAP# 1541 & 2402 • LACSD# 10181  
TEL (888) 288-AETL • (818) 845-8200 • www.aetlab.com

NV5	AETL Job Number: BBJ0015	Site: Malibu High School
3777 Long Beach Boulevard, Annex Building	Project Number: SMSD-20-9592	Morning Star Drive
Long Beach, CA 90807	Attention: Jonathan Barkman	Malibu, CA
	Project Name: MMHS-Bldg J	Reported: 10/02/2020 16:15

- RL Reporting Limit - The lowest concentration at which an analyte can be detected in a sample and its concentration can be reported with a specified degree of confidence, accuracy and precision. For usage at AETL, RL is equivalent to LOQ.
- RPD Relative Percent Difference
- SIM Selective Ion Monitoring
- SPLP Synthetic Precipitation Leaching Procedure
- STLC Soluble Threshold Limit Concentration
- TCLP Toxicity Characteristic Leaching Procedure
- TPH Total Petroleum Hydrocarbons
- TTLC Total Threshold Limit Concentrations
- ug/kg Micrograms per Kilogram
- ug/L Micrograms per Liter
- ug/m3 Micrograms per cubic meter
- WET Waste Extraction Test
- Y Yes
- ZHE Zero Headspace Extraction



## AMERICAN ENVIRONMENTAL TESTING LABORATORY

2834 North Naomi Street Burbank, CA 91504 • ELAP# 1541 & 2402 • LACSD# 10181  
TEL (888) 288-AETL • (818) 845-8200 • www.aetlab.com

October 13, 2020

AETL Job No: BBJ0145  
Received Date: 10/09/2020  
Project Number: SMSD-20-9592

NV5  
3777 Long Beach Boulevard, Annex Building  
Long Beach, CA 90807  
Telephone: (562) 495-5777

Attention: Jonathan Barkman

Project Name: Malibu High School  
Site: Malibu High School

Enclosed please find the results of analyses for samples which were analyzed as specified on the attached chain of custody. If you have any questions concerning this report, please do not hesitate to call.

Checked By:

Harriet Torosyan  
Project Manager

Approved By:

Corey Jones  
Project Manager

Table of Contents

Client Project Name: Malibu High School (SMSD-20-9592)  
Work Order Number: BBJ0145

1 Cover Letter ..... 1  
2 Sample Condition on Receipt ..... 3  
3 Chain of Custody ..... 4  
4 Cooler Receipt Form ..... 5  
5 Case Narrative ..... 6  
6 Samples Received ..... 7  
7 Positive Hits Summary ..... 8  
8 Analytical Results ..... 9  
9 Quality Control Results ..... 10  
10 Qualifiers and Definitions ..... 12



A KYZER LABS COMPANY

# AMERICAN ENVIRONMENTAL TESTING LABORATORY

2834 North Naomi Street Burbank, CA 91504 • ELAP# 1541 & 2402 • LACSD# 10181  
TEL (888) 288-AETL • (818) 845-8200 • www.aetlab.com

NV5	AETL Job Number: BBJ0145	Site: Malibu High School
3777 Long Beach Boulevard, Annex Building	Project Number: SMSD-20-9592	
Long Beach, CA 90807	Attention: Jonathan Barkman	
	Project Name: Malibu High School	Reported: 10/13/2020 17:14

## Sample Condition on Receipt

Cooler ID: Default Cooler

Temperature: 3.1 °C

Are the COCs Correct	Y		
Labels Legible	Y	Containers In Good Condition	Y
COC/Labels Agree	Y	Samples Preserved Properly	Y
Sufficient Sample Volume	Y	Sufficient Holding Time for all Tests	Y
Sample Labels intact	Y	Received on Ice	Y



**American Environmental Testing Laboratory Inc.**  
 2834 & 2908 North Naomi Street, Burbank, CA 91504 • DOHS NO: 1541, LACSD NO: 10181  
 Tel: (888) 288-AETL • (818) 845-8200 • Fax: (818) 845-8840 • www.aetlab.com

**CHAIN OF CUSTODY RECORD**  
**110130**

AETL JOB No. **BBJ0145** Page 4 of 13

COMPANY **NVS** PROJECT MANAGER **Jon B.**  
 COMPANY ADDRESS **3777 Long Beach Blvd.** PHONE **310 920 8404**  
**Long Beach, CA** FAX \_\_\_\_\_  
 PROJECT NAME **MMH 5** PROJECT # **SMSP-20-9592**  
 SITE NAME AND ADDRESS **Malibu H.S.** PO # \_\_\_\_\_

SAMPLE ID	LAB ID	DATE	TIME	MATRIX	CONTAINER NUMBER/SIZE	PRES.	ANALYSIS REQUESTED				TEST INSTRUCTIONS & COMMENTS	
W-01	BBJ0145-01	10-9-20	1600	WAPE	100 cm <sup>2</sup>	ICE						

**SAMPLE RECEIPT - TO BE FILLED BY LABORATORY**

TOTAL NUMBER OF CONTAINERS: 1 PROPERLY COOLED  Y /  N /  NA

CUSTODY SEALS  Y /  N /  NA

RECEIVED IN GOOD COND.  Y /  N

DATA DELIVERABLE REQUIRED:  HARD COPY,  PDF,  GEOTRACKER (GLOBAL ID),  OTHER (PLEASE SPECIFY)

TURN AROUND TIME:  SAME DAY,  NEXT DAY,  2 DAYS,  3 DAYS

**1. RELINQUISHED BY SAMPLER:** Signature: *[Signature]*, Printed Name: **Anthony Flores**, Date: **10/9/20**, Time: **1720**

**2. RELINQUISHED BY:** Signature: \_\_\_\_\_, Printed Name: \_\_\_\_\_, Date: \_\_\_\_\_, Time: \_\_\_\_\_

**3. RECEIVED BY LABORATORY:** Signature: *[Signature]*, Printed Name: **Dargis Pina**, Date: **10/19/20**, Time: **1720**



A KYZER LABS COMPANY

# AMERICAN ENVIRONMENTAL TESTING LABORATORY

2834 N. NAOMI ST. BURBANK, CALIFORNIA 91504 ELAP# 1541 & 2402 LACSD# 10181

TEL (888) 288-AETL (818) 845-8200 FAX (818) 845-8840 www.aetlab.com

## COOLER RECEIPT FORM

Client Name: NV5			
Project Name:			
AETL Job Number: BB50145			
Date Received: 10/09/20		Received by: Sargis Pirek	
Carrier: <input type="checkbox"/> AETL Courier <input checked="" type="checkbox"/> Client <input type="checkbox"/> GLS <input type="checkbox"/> FedEx <input type="checkbox"/> UPS			
<input type="checkbox"/> Others:			
Samples were received in: <input checked="" type="checkbox"/> Cooler ( 1 ) <input type="checkbox"/> Other (Specify):			
Inside temperature of shipping container No 1: 3.1°C, No 2: , No 3:			
Type of sample containers: <input type="checkbox"/> VOA, <input type="checkbox"/> Glass bottles, <input checked="" type="checkbox"/> Wide mouth jars, <input type="checkbox"/> HDPE bottles, <input type="checkbox"/> Metal sleeves, <input type="checkbox"/> Others (Specify):			
How are samples preserved: <input type="checkbox"/> None, <input checked="" type="checkbox"/> Ice, <input type="checkbox"/> Blue Ice, <input type="checkbox"/> Dry Ice			
<input checked="" type="checkbox"/> None, <input type="checkbox"/> HNO <sub>3</sub> , <input type="checkbox"/> NaOH, <input type="checkbox"/> ZnOAc, <input type="checkbox"/> HCl, <input type="checkbox"/> Na <sub>2</sub> S <sub>2</sub> O <sub>3</sub> , <input type="checkbox"/> MeOH			
<input type="checkbox"/> Other (Specify):			
	<b>Yes</b>	<b>No, explain below</b>	<b>Name, if client was notified.</b>
1. Are the COCs Correct?	✓		
2. Are the Sample labels legible?	✓		
3. Do samples match the COC?	✓		
4. Are the required analyses clear?	✓		
5. Is there enough samples for required analysis?	✓		
6. Are samples sealed with evidence tape?	N/A		
7. Are sample containers in good condition?	✓		
8. Are samples preserved?	✓		
9. Are samples preserved properly for the intended analysis?	✓		
10. Are the VOAs free of headspace?	N/A		
11. Are the jars free of headspace?	N/A		

**PLEASE NOTE ALL SAMPLES WILL BE DISPOSED OF 30 DAYS AFTER RECEIVING DATE. IF AETL IS INFORMED OTHERWISE, THERE WILL BE A STORAGE CHARGE PER SAMPLE PER MONTH FOR ANY SAMPLE HELD BEYOND 30 DAYS.**

Explain all "No" answers for above questions:

---



---



---



---



A KYZER LABS COMPANY

# AMERICAN ENVIRONMENTAL TESTING LABORATORY

2834 North Naomi Street Burbank, CA 91504 • ELAP# 1541 & 2402 • LACSD# 10181  
TEL (888) 288-AETL • (818) 845-8200 • www.aetlab.com

NV5	AETL Job Number: BBJ0145	Site: Malibu High School
3777 Long Beach Boulevard, Annex Building	Project Number: SMSD-20-9592	
Long Beach, CA 90807	Attention: Jonathan Barkman	
	Project Name: Malibu High School	Reported: 10/13/2020 17:14

## Case Narrative

The following "Sample Received" Section summarizes the samples received and associated analyses requested as specified on the enclosed chain of custody.

Results as reported by the laboratory apply only to 1) the items tested, 2) as the samples are received, and 3) the accuracy of information provided. Information supplied by the customer that may affect validity of results and may be contained in this report include Project Name/Number, Site Location, Sample Locations, Sampling Dates/Times, Sample ID, Sample Preservation, Sample Matrix, Sample Properties, Field Blanks, Field Duplicates, Field Spikes, and Site Historical Data.

Accreditation applies only to the test methods listed on each scope of accreditation held by the laboratory; certifications held by the laboratory may not apply to results supplied in this report.

Unless otherwise noted, all results of soil and solid samples are based on wet weight.

No analytical non-conformances were encountered.

Qualifiers are noted in the report.





A KYZER LABS COMPANY

# AMERICAN ENVIRONMENTAL TESTING LABORATORY

2834 North Naomi Street Burbank, CA 91504 • ELAP# 1541 & 2402 • LACSD# 10181  
 TEL (888) 288-AETL • (818) 845-8200 • www.aetlab.com

NV5	AETL Job Number: BBJ0145	Site: Malibu High School
3777 Long Beach Boulevard, Annex Building	Project Number: SMSD-20-9592	
Long Beach, CA 90807	Attention: Jonathan Barkman	
	Project Name: Malibu High School	Reported: 10/13/2020 17:14

## Samples Received

**AETL received the following samples on 10/09/2020 with the following specifications**

Project Name: Malibu High School  
 Site:

Client ID	Matrix	Sample Date
W-W1		10/9/2020 16:00
Lab ID	Matrix	Quantity of Containers
BBJ0145-01	Wipe	1
Analysis	Units	TAT
EPA 8082	ug/100cm2	1

**Total Number of Samples received: 1**



A KYZER LABS COMPANY

# AMERICAN ENVIRONMENTAL TESTING LABORATORY

2834 North Naomi Street Burbank, CA 91504 • ELAP# 1541 & 2402 • LACSD# 10181

TEL (888) 288-AETL • (818) 845-8200 • www.aetlab.com

NV5	AETL Job Number: BBJ0145	Site: Malibu High School
3777 Long Beach Boulevard, Annex Building	Project Number: SMSD-20-9592	
Long Beach, CA 90807	Attention: Jonathan Barkman	
	Project Name: Malibu High School	Reported: 10/13/2020 17:14

## Positive Hits Summary

Lab ID	Client ID	Received
BBJ0145-01	W-W1	10/09/2020 17:20
Method	Analyte	Result
EPA 8082	Aroclor-1260 (PCB-1260)	0.801
		Unit
		ug/100cm2
		Unit
		10/13/2020 12:53



A KYZER LABS COMPANY

# AMERICAN ENVIRONMENTAL TESTING LABORATORY

2834 North Naomi Street Burbank, CA 91504 • ELAP# 1541 & 2402 • LACSD# 10181  
 TEL (888) 288-AETL • (818) 845-8200 • www.aetlab.com

NV5	AETL Job Number: BBJ0145	Site: Malibu High School
3777 Long Beach Boulevard, Annex Building	Project Number: SMSD-20-9592	
Long Beach, CA 90807	Attention: Jonathan Barkman	
	Project Name: Malibu High School	Reported: 10/13/2020 17:14

## Analytical Results

Client ID: **W-W1**

Lab ID: **BBJ0145-01 (Wipe)**

Sampled: **10/09/20 16:00**

Analyte	Result	Qualifier	Dilution	MDL	RL	Units	Prepared Date/Time	Analyzed Date/Time	Batch	Analyst Initials	Prep. Method
---------	--------	-----------	----------	-----	----	-------	--------------------	--------------------	-------	------------------	--------------

### PCBs

Method: **EPA 8082**

Aroclor-1016 (PCB-1016)	ND		1	0.0200	0.0500	ug/100cm2	10/12/20 08:32	10/13/20 12:53	BJ0274	ATS	3540C
Aroclor-1221 (PCB-1221)	ND		1	0.0200	0.0500	ug/100cm2	10/12/20 08:32	10/13/20 12:53	BJ0274	ATS	3540C
Aroclor-1232 (PCB-1232)	ND		1	0.0200	0.0500	ug/100cm2	10/12/20 08:32	10/13/20 12:53	BJ0274	ATS	3540C
Aroclor-1242 (PCB-1242)	ND		1	0.0200	0.0500	ug/100cm2	10/12/20 08:32	10/13/20 12:53	BJ0274	ATS	3540C
Aroclor-1248 (PCB-1248)	ND		1	0.0200	0.0500	ug/100cm2	10/12/20 08:32	10/13/20 12:53	BJ0274	ATS	3540C
Aroclor-1254 (PCB-1254)	ND		1	0.0200	0.0500	ug/100cm2	10/12/20 08:32	10/13/20 12:53	BJ0274	ATS	3540C
<b>Aroclor-1260 (PCB-1260)</b>	<b>0.801</b>		1	0.0200	0.0500	ug/100cm2	10/12/20 08:32	10/13/20 12:53	BJ0274	ATS	3540C
Aroclor-1262 (PCB-1262)	ND		1	0.0200	0.0500	ug/100cm2	10/12/20 08:32	10/13/20 12:53	BJ0274	ATS	3540C
Aroclor-1268 (PCB-1268)	ND		1	0.0200	0.0500	ug/100cm2	10/12/20 08:32	10/13/20 12:53	BJ0274	ATS	3540C
			Recovery		Acceptance Criteria						
Surrogate: Decachlorobiphenyl	32.6%			30-150	10/12/20 08:32	10/13/20 12:53	BJ0274	ATS	3540C		
Surrogate: Tetrachloro-m-xylene	72.1%			30-150	10/12/20 08:32	10/13/20 12:53	BJ0274	ATS	3540C		



A KYZER LABS COMPANY

# AMERICAN ENVIRONMENTAL TESTING LABORATORY

2834 North Naomi Street Burbank, CA 91504 • ELAP# 1541 & 2402 • LACSD# 10181  
 TEL (888) 288-AETL • (818) 845-8200 • www.aetlab.com

NV5	AETL Job Number: BBJ0145	Site: Malibu High School
3777 Long Beach Boulevard, Annex Building	Project Number: SMSD-20-9592	
Long Beach, CA 90807	Attention: Jonathan Barkman	
	Project Name: Malibu High School	Reported: 10/13/2020 17:14

## Quality Control Results

### PCBs (EPA 8082)

Analyte	Result	MDL	RL	Units	Spike Level	Source Result	%REC	%REC Limits	RPD	RPD Limit	Qualifier
<b>Batch: B0J0274 - 3540C</b>											
Method Blank (B0J0274-BLK1)											
Prepared: 10/12/2020 08:32											
Analyzed: 10/13/2020 11:34											
Aroclor-1016 (PCB-1016)	ND	0.0200	0.0500	ug/100cm2							
Aroclor-1221 (PCB-1221)	ND	0.0200	0.0500	ug/100cm2							
Aroclor-1232 (PCB-1232)	ND	0.0200	0.0500	ug/100cm2							
Aroclor-1242 (PCB-1242)	ND	0.0200	0.0500	ug/100cm2							
Aroclor-1248 (PCB-1248)	ND	0.0200	0.0500	ug/100cm2							
Aroclor-1254 (PCB-1254)	ND	0.0200	0.0500	ug/100cm2							
Aroclor-1260 (PCB-1260)	ND	0.0200	0.0500	ug/100cm2							
Aroclor-1262 (PCB-1262)	ND	0.0200	0.0500	ug/100cm2							
Aroclor-1268 (PCB-1268)	ND	0.0200	0.0500	ug/100cm2							
Surrogate: Decachlorobiphenyl	0.0169			ug/100cm2	0.0500		33.7	30-150			
Surrogate: Tetrachloro-m-xylene	0.0335			ug/100cm2	0.0500		67.0	30-150			



A KYZER LABS COMPANY

# AMERICAN ENVIRONMENTAL TESTING LABORATORY

2834 North Naomi Street Burbank, CA 91504 • ELAP# 1541 & 2402 • LACSD# 10181  
 TEL (888) 288-AETL • (818) 845-8200 • www.aetlab.com

NV5	AETL Job Number: BBJ0145	Site: Malibu High School
3777 Long Beach Boulevard, Annex Building	Project Number: SMSD-20-9592	
Long Beach, CA 90807	Attention: Jonathan Barkman	
	Project Name: Malibu High School	Reported: 10/13/2020 17:14

## Quality Control Results

### PCBs (EPA 8082)

Analyte	Result	MDL	RL	Units	Spike Level	Source Result	%REC	%REC Limits	RPD	RPD Limit	Qualifier
<b>Batch: B0J0274 - 3540C (Continued)</b>					<b>Prepared: 10/12/2020 08:32</b>						
LCS (B0J0274-BS1)					<b>Analyzed: 10/13/2020 10:55</b>						
Aroclor-1016 (PCB-1016)	0.586	0.0200	0.0500	ug/100cm2	1.00		58.6	50-150			
Aroclor-1260 (PCB-1260)	0.611	0.0200	0.0500	ug/100cm2	1.00		61.1	50-150			
<hr/>											
Surrogate: Decachlorobiphenyl	0.0213			ug/100cm2	0.0500		42.7	30-150			
Surrogate: Tetrachloro-m-xylene	0.0302			ug/100cm2	0.0500		60.4	30-150			
<hr/>											
LCSD (B0J0274-BSD1)					<b>Analyzed: 10/13/2020 11:15</b>						
Aroclor-1016 (PCB-1016)	0.619	0.0200	0.0500	ug/100cm2	1.00		61.9	50-150	5.59	40	
Aroclor-1260 (PCB-1260)	0.564	0.0200	0.0500	ug/100cm2	1.00		56.4	50-150	8.03	40	
<hr/>											
Surrogate: Decachlorobiphenyl	0.0192			ug/100cm2	0.0500		38.4	30-150			
Surrogate: Tetrachloro-m-xylene	0.0416			ug/100cm2	0.0500		83.1	30-150			



A KYZER LABS COMPANY

## AMERICAN ENVIRONMENTAL TESTING LABORATORY

2834 North Naomi Street Burbank, CA 91504 • ELAP# 1541 & 2402 • LACSD# 10181

TEL (888) 288-AETL • (818) 845-8200 • www.aetlab.com

NV5	AETL Job Number: BBJ0145	Site: Malibu High School
3777 Long Beach Boulevard, Annex Building	Project Number: SMSD-20-9592	
Long Beach, CA 90807	Attention: Jonathan Barkman	
	Project Name: Malibu High School	Reported: 10/13/2020 17:14

### Qualifiers and Definitions

Item	Definitions
% wt	Percent Weight
%REC	Percent Recovery
°C	Degrees Celsius
AETL	American Environmental Testing Laboratory, LLC
C	Carbon
CARB	California Air Resources Board
COC	Chain of Custody
DRO	Diesel Range Organics
Dup	Duplicate
ELAP	Environmental Laboratory Accreditation Program
EPA	Environmental Protection Agency
GRO	Gasoline Range Organics
HC	Hydrocarbon
LACSD	Los Angeles County Sanitation Districts
LCS	Laboratory Control Sample - A sample matrix, free from the analytes of interest, spiked with verified known amounts of analytes.
LCSD	Laboratory Control Sample Duplicate - A replicate of Laboratory Control Sample.
LOQ	Limit of Quantitation
MDL	Method Detection Limit - The minimum measured concentration of a substance that can be reported with 99% confidence. MDL is statistically derived number which is specific for each instrument, each method and each compound.
mg/kg	Miligrams per Kilogram
mg/L	Miligrams per Liter
MRO	Motor oil Range Organics
MS	Matrix Spike - A sample prepared, taken through all sample preparation and analytical steps of the procedure and analyzed as an independent test results.
MSD	Matrix Spike Duplicate - A replicate of Matrix Spike Sample.
N	No
ND	Analyte is not detected below Method Detection Limit.
ng/m3	Nanograms per cubic meter
NIOSH	National Institute for Occupational Safety and Health
nL/L	Nanoliters per Liter
NTU	Nephelometric Turbidity Units
Ohm-cm	Ohms per centimeter
OSHA	Occupational Safety and Health Administration
PCB	Polychlorinated Biphenyl
RL	Reporting Limit - The lowest concentration at which an analyte can be detected in a sample and its concentration can be reported with a specified degree of confidence, accuracy and precision. For usage at AETL, RL is equivalent to LOQ.
RPD	Relative Percent Difference



A KYZER LABS COMPANY

# AMERICAN ENVIRONMENTAL TESTING LABORATORY

2834 North Naomi Street Burbank, CA 91504 • ELAP# 1541 & 2402 • LACSD# 10181  
TEL (888) 288-AETL • (818) 845-8200 • www.aetlab.com

NV5	AETL Job Number: BBJ0145	Site: Malibu High School
3777 Long Beach Boulevard, Annex Building	Project Number: SMSD-20-9592	
Long Beach, CA 90807	Attention: Jonathan Barkman	
	Project Name: Malibu High School	Reported: 10/13/2020 17:14

SIM	Selective Ion Monitoring
SPLP	Synthetic Precipitation Leaching Procedure
STLC	Soluble Threshold Limit Concentration
TCLP	Toxicity Characteristic Leaching Procedure
TPH	Total Petroleum Hydrocarbons
TTLC	Total Threshold Limit Concentrations
ug/kg	Micrograms per Kilogram
ug/L	Micrograms per Liter
ug/m3	Micrograms per cubic meter
WET	Waste Extraction Test
Y	Yes
ZHE	Zero Headspace Extraction



## AMERICAN ENVIRONMENTAL TESTING LABORATORY

2834 North Naomi Street Burbank, CA 91504 • ELAP# 1541 & 2402 • LACSD# 10181  
TEL (888) 288-AETL • (818) 845-8200 • www.aetlab.com

October 13, 2020

AETL Job No: BBJ0144  
Received Date: 10/09/2020  
Project Number: SMSD-20-9592

NV5  
3777 Long Beach Boulevard, Annex Building  
Long Beach, CA 90807  
Telephone: (562) 495-5777

Attention: Jonathan Barkman

Project Name: Malibu High School  
Site: Malibu High School

Enclosed please find the results of analyses for samples which were analyzed as specified on the attached chain of custody. If you have any questions concerning this report, please do not hesitate to call.

Checked By:

Harriet Torosyan  
Project Manager

Approved By:

Corey Jones  
Project Manager



## Table of Contents

---

Client Project Name: Malibu High School (SMSD-20-9592)  
Work Order Number: BBJ0144

1	Cover Letter .....	1
2	Sample Condition on Receipt .....	3
3	Chain of Custody .....	4
4	Cooler Receipt Form .....	5
5	Case Narrative .....	6
6	Samples Received .....	7
7	Positive Hits Summary .....	8
8	Analytical Results .....	9
9	Quality Control Results .....	12
10	Qualifiers and Definitions .....	14



A KYZER LABS COMPANY

# AMERICAN ENVIRONMENTAL TESTING LABORATORY

2834 North Naomi Street Burbank, CA 91504 • ELAP# 1541 & 2402 • LACSD# 10181  
TEL (888) 288-AETL • (818) 845-8200 • www.aetlab.com

NV5	AETL Job Number: BBJ0144	Site: Malibu High School
3777 Long Beach Boulevard, Annex Building	Project Number: SMSD-20-9592	
Long Beach, CA 90807	Attention: Jonathan Barkman	
	Project Name: Malibu High School	Reported: 10/13/2020 17:14

## Sample Condition on Receipt

Cooler ID: Default Cooler

Temperature: 3.1 °C

Are the COCs Correct	Y		
Labels Legible	Y	Containers In Good Condition	Y
COC/Labels Agree	Y	Samples Preserved Properly	Y
Sufficient Sample Volume	Y	Sufficient Holding Time for all Tests	Y
Sample Labels intact	Y	Received on Ice	Y



**American Environmental Testing Laboratory Inc.**  
 2834 & 2908 North Naomi Street, Burbank, CA 91504 • DOHS NO: 1541, LACSD NO: 10181  
 Tel: (888) 288-AETL • (818) 845-8200 • Fax: (818) 845-8840 • www.aetlab.com

**CHAIN OF CUSTODY RECORD**

No. **75602**

Page **1** of **1**

AETL JOB No. **BBJ0144**

COMPANY **Nvs/ALTA** PROJECT MANAGER **S.N. Backman**  
 COMPANY ADDRESS **3777 Long Beach Blvd.** PHONE **920 840 840**  
 PROJECT NAME **M.MATS** PROJECT # **SMSP-20-9592**  
 SITE NAME AND ADDRESS **MALIBU H.S.** PO # \_\_\_\_\_

**ANALYSIS REQUESTED**

TEST INSTRUCTIONS & COMMENTS	ANALYSIS REQUESTED
	SOCKET
	EPA 8082
	XX
	XX
	XX

SAMPLE ID	LAB ID	DATE	TIME	MATRIX	CONTAINER NUMBER/SIZE	PRES.
N-1	BBJ01440	10-9-20	1520	WATER	100 cm <sup>2</sup>	ICE
N-2	BBJ014402	L	1530	L		L
N-3	BBJ014403	L	1540	L		L

**SAMPLE RECEIPT - TO BE FILLED BY LABORATORY**

**RELINQUISHED BY:** 1. **SAMPLER:** Signature: *[Signature]* Printed Name: **Kathy Flores** Date: **10/9/20** Time: **1720**

**RELINQUISHED BY:** 2. Signature: \_\_\_\_\_ Printed Name: \_\_\_\_\_ Date: \_\_\_\_\_ Time: \_\_\_\_\_

**RELINQUISHED BY:** 3. Signature: \_\_\_\_\_ Printed Name: \_\_\_\_\_ Date: \_\_\_\_\_ Time: \_\_\_\_\_

TOTAL NUMBER OF CONTAINERS: **3** PROPERLY COOLED  Y / N / NA

CUSTOMY SEALS  Y / N / NA SAMPLES INTACT  Y / N / NA

CEIVED IN GOOD COND.  Y / N SAMPLES ACCEPTED  Y / N

**TURN AROUND TIME**

NORMAL  RUSH  SAME DAY  NEXT DAY  2 DAYS  3 DAYS

**RECEIVED BY:** 1. Signature: \_\_\_\_\_ Printed Name: \_\_\_\_\_ Date: \_\_\_\_\_ Time: \_\_\_\_\_

**RECEIVED BY:** 2. Signature: \_\_\_\_\_ Printed Name: \_\_\_\_\_ Date: \_\_\_\_\_ Time: \_\_\_\_\_

**RECEIVED BY:** 3. Signature: *[Signature]* Printed Name: **Darja's Pich** Date: **10/9/20** Time: **1720**

DISTRIBUTION: WHITE - Laboratory, CANARY - Laboratory, PINK - Project/Account Manager, YELLOW - Sampler/Originator



A KYZER LABS COMPANY

# AMERICAN ENVIRONMENTAL TESTING LABORATORY

2834 N. NAOMI ST. BURBANK, CALIFORNIA 91504 ELAP# 1541 & 2402 LACSD# 10181

TEL (888) 288-AETL (818) 845-8200 FAX (818) 845-8840 www.aetlab.com

## COOLER RECEIPT FORM

Client Name: <u>NV5</u>			
Project Name:			
AETL Job Number: <u>BBJ0144</u>			
Date Received: <u>10/09/2020</u>		Received by: <u>Sargis Pireh</u>	
Carrier: <input type="checkbox"/> AETL Courier <input checked="" type="checkbox"/> Client <input type="checkbox"/> GLS <input type="checkbox"/> FedEx <input type="checkbox"/> UPS			
<input type="checkbox"/> Others:			
Samples were received in: <input checked="" type="checkbox"/> Cooler ( <u>1</u> ) <input type="checkbox"/> Other (Specify):			
Inside temperature of shipping container No 1: <u>31°C</u> , No 2: _____, No 3: _____			
Type of sample containers: <input type="checkbox"/> VOA, <input type="checkbox"/> Glass bottles, <input checked="" type="checkbox"/> Wide mouth jars, <input type="checkbox"/> HDPE bottles, <input type="checkbox"/> Metal sleeves, <input type="checkbox"/> Others (Specify):			
How are samples preserved: <input type="checkbox"/> None, <input checked="" type="checkbox"/> Ice, <input type="checkbox"/> Blue Ice, <input type="checkbox"/> Dry Ice			
<input checked="" type="checkbox"/> None, <input type="checkbox"/> HNO <sub>3</sub> , <input type="checkbox"/> NaOH, <input type="checkbox"/> ZnOAc, <input type="checkbox"/> HCl, <input type="checkbox"/> Na <sub>2</sub> S <sub>2</sub> O <sub>3</sub> , <input type="checkbox"/> MeOH			
<input type="checkbox"/> Other (Specify):			
	<b>Yes</b>	<b>No, explain below</b>	<b>Name, if client was notified.</b>
1. Are the COCs Correct?	✓		
2. Are the Sample labels legible?	✓		
3. Do samples match the COC?	✓		
4. Are the required analyses clear?	✓		
5. Is there enough samples for required analysis?	✓		
6. Are samples sealed with evidence tape?	N/A		
7. Are sample containers in good condition?	✓		
8. Are samples preserved?	✓		
9. Are samples preserved properly for the intended analysis?	✓		
10. Are the VOAs free of headspace?	N/A		
11. Are the jars free of headspace?	N/A		

**PLEASE NOTE ALL SAMPLES WILL BE DISPOSED OF 30 DAYS AFTER RECEIVING DATE. IF AETL IS INFORMED OTHERWISE, THERE WILL BE A STORAGE CHARGE PER SAMPLE PER MONTH FOR ANY SAMPLE HELD BEYOND 30 DAYS.**

Explain all "No" answers for above questions:

---



---



---



---



A KYZER LABS COMPANY

# AMERICAN ENVIRONMENTAL TESTING LABORATORY

2834 North Naomi Street Burbank, CA 91504 • ELAP# 1541 & 2402 • LACSD# 10181  
TEL (888) 288-AETL • (818) 845-8200 • www.aetlab.com

NV5	AETL Job Number: BBJ0144	Site: Malibu High School
3777 Long Beach Boulevard, Annex Building	Project Number: SMSD-20-9592	
Long Beach, CA 90807	Attention: Jonathan Barkman	
	Project Name: Malibu High School	Reported: 10/13/2020 17:14

## Case Narrative

The following "Sample Received" Section summarizes the samples received and associated analyses requested as specified on the enclosed chain of custody.

Results as reported by the laboratory apply only to 1) the items tested, 2) as the samples are received, and 3) the accuracy of information provided. Information supplied by the customer that may affect validity of results and may be contained in this report include Project Name/Number, Site Location, Sample Locations, Sampling Dates/Times, Sample ID, Sample Preservation, Sample Matrix, Sample Properties, Field Blanks, Field Duplicates, Field Spikes, and Site Historical Data.

Accreditation applies only to the test methods listed on each scope of accreditation held by the laboratory; certifications held by the laboratory may not apply to results supplied in this report.

Unless otherwise noted, all results of soil and solid samples are based on wet weight.

No analytical non-conformances were encountered.

Qualifiers are noted in the report.



A KYZER LABS COMPANY

# AMERICAN ENVIRONMENTAL TESTING LABORATORY

2834 North Naomi Street Burbank, CA 91504 • ELAP# 1541 & 2402 • LACSD# 10181  
TEL (888) 288-AETL • (818) 845-8200 • www.aetlab.com

NV5	AETL Job Number: BBJ0144	Site: Malibu High School
3777 Long Beach Boulevard, Annex Building	Project Number: SMSD-20-9592	
Long Beach, CA 90807	Attention: Jonathan Barkman	
	Project Name: Malibu High School	Reported: 10/13/2020 17:14

## Samples Received

**AETL received the following samples on 10/09/2020 with the following specifications**

Project Name: Malibu High School  
Site:

<b>Client ID</b>		<b>Sample Date</b>
N-1		10/9/2020 15:20
<b>Lab ID</b>	<b>Matrix</b>	<b>Quantity of Containers</b>
BBJ0144-01	Wipe	1

<b>Analysis</b>	<b>Units</b>	<b>TAT</b>
EPA 8082	ug/100cm2	1

<b>Client ID</b>		<b>Sample Date</b>
N-2		10/9/2020 15:30
<b>Lab ID</b>	<b>Matrix</b>	<b>Quantity of Containers</b>
BBJ0144-02	Wipe	1

<b>Analysis</b>	<b>Units</b>	<b>TAT</b>
EPA 8082	ug/100cm2	1

<b>Client ID</b>		<b>Sample Date</b>
N-3		10/9/2020 15:40
<b>Lab ID</b>	<b>Matrix</b>	<b>Quantity of Containers</b>
BBJ0144-03	Wipe	1

<b>Analysis</b>	<b>Units</b>	<b>TAT</b>
EPA 8082	ug/100cm2	1

**Total Number of Samples received: 3**



A KYZER LABS COMPANY

# AMERICAN ENVIRONMENTAL TESTING LABORATORY

2834 North Naomi Street Burbank, CA 91504 • ELAP# 1541 & 2402 • LACSD# 10181  
 TEL (888) 288-AETL • (818) 845-8200 • www.aetlab.com

NV5	AETL Job Number: BBJ0144	Site: Malibu High School
3777 Long Beach Boulevard, Annex Building	Project Number: SMSD-20-9592	
Long Beach, CA 90807	Attention: Jonathan Barkman	
	Project Name: Malibu High School	Reported: 10/13/2020 17:14

## Positive Hits Summary

Lab ID	Client ID	Received
BBJ0144-02	N-2	10/09/2020 17:20
Method	Analyte	Result
EPA 8082	Aroclor-1254 (PCB-1254)	5.32
		Unit
		ug/100cm2
		Qualifier
		Analyzed
		10/13/2020 12:14



A KYZER LABS COMPANY

# AMERICAN ENVIRONMENTAL TESTING LABORATORY

2834 North Naomi Street Burbank, CA 91504 • ELAP# 1541 & 2402 • LACSD# 10181  
 TEL (888) 288-AETL • (818) 845-8200 • www.aetlab.com

NV5	AETL Job Number: BBJ0144	Site: Malibu High School
3777 Long Beach Boulevard, Annex Building	Project Number: SMSD-20-9592	
Long Beach, CA 90807	Attention: Jonathan Barkman	
	Project Name: Malibu High School	Reported: 10/13/2020 17:14

## Analytical Results

Client ID: N-1

Lab ID: BBJ0144-01 (Wipe)

Sampled: 10/09/20 15:20

Analyte	Result	Qualifier	Dilution	MDL	RL	Units	Prepared Date/Time	Analyzed Date/Time	Batch	Analyst Initials	Prep. Method
---------	--------	-----------	----------	-----	----	-------	--------------------	--------------------	-------	------------------	--------------

### PCBs

Method: EPA 8082

Aroclor-1016 (PCB-1016)	ND		1	0.0200	0.0500	ug/100cm2	10/12/20 08:32	10/13/20 11:54	B0J0274	ATS	3540C
Aroclor-1221 (PCB-1221)	ND		1	0.0200	0.0500	ug/100cm2	10/12/20 08:32	10/13/20 11:54	B0J0274	ATS	3540C
Aroclor-1232 (PCB-1232)	ND		1	0.0200	0.0500	ug/100cm2	10/12/20 08:32	10/13/20 11:54	B0J0274	ATS	3540C
Aroclor-1242 (PCB-1242)	ND		1	0.0200	0.0500	ug/100cm2	10/12/20 08:32	10/13/20 11:54	B0J0274	ATS	3540C
Aroclor-1248 (PCB-1248)	ND		1	0.0200	0.0500	ug/100cm2	10/12/20 08:32	10/13/20 11:54	B0J0274	ATS	3540C
Aroclor-1254 (PCB-1254)	ND		1	0.0200	0.0500	ug/100cm2	10/12/20 08:32	10/13/20 11:54	B0J0274	ATS	3540C
Aroclor-1260 (PCB-1260)	ND		1	0.0200	0.0500	ug/100cm2	10/12/20 08:32	10/13/20 11:54	B0J0274	ATS	3540C
Aroclor-1262 (PCB-1262)	ND		1	0.0200	0.0500	ug/100cm2	10/12/20 08:32	10/13/20 11:54	B0J0274	ATS	3540C
Aroclor-1268 (PCB-1268)	ND		1	0.0200	0.0500	ug/100cm2	10/12/20 08:32	10/13/20 11:54	B0J0274	ATS	3540C

#### Recovery

Surrogate: Decachlorobiphenyl	30.1%
Surrogate: Tetrachloro-m-xylene	60.6%

#### Acceptance Criteria

					30-150		10/12/20 08:32	10/13/20 11:54	B0J0274	ATS	3540C
					30-150		10/12/20 08:32	10/13/20 11:54	B0J0274	ATS	3540C





A KYZER LABS COMPANY

# AMERICAN ENVIRONMENTAL TESTING LABORATORY

2834 North Naomi Street Burbank, CA 91504 • ELAP# 1541 & 2402 • LACSD# 10181  
 TEL (888) 288-AETL • (818) 845-8200 • www.aetlab.com

NV5	AETL Job Number: BBJ0144	Site: Malibu High School
3777 Long Beach Boulevard, Annex Building	Project Number: SMSD-20-9592	
Long Beach, CA 90807	Attention: Jonathan Barkman	
	Project Name: Malibu High School	Reported: 10/13/2020 17:14

## Analytical Results

Client ID: N-2

Lab ID: BBJ0144-02 (Wipe)

Sampled: 10/09/20 15:30

Analyte	Result	Qualifier	Dilution	MDL	RL	Units	Prepared Date/Time	Analyzed Date/Time	Batch	Analyst Initials	Prep. Method
---------	--------	-----------	----------	-----	----	-------	--------------------	--------------------	-------	------------------	--------------

### PCBs

Method: EPA 8082

Aroclor-1016 (PCB-1016)	ND		1	0.0200	0.0500	ug/100cm2	10/12/20 08:32	10/13/20 12:14	B0J0274	ATS	3540C
Aroclor-1221 (PCB-1221)	ND		1	0.0200	0.0500	ug/100cm2	10/12/20 08:32	10/13/20 12:14	B0J0274	ATS	3540C
Aroclor-1232 (PCB-1232)	ND		1	0.0200	0.0500	ug/100cm2	10/12/20 08:32	10/13/20 12:14	B0J0274	ATS	3540C
Aroclor-1242 (PCB-1242)	ND		1	0.0200	0.0500	ug/100cm2	10/12/20 08:32	10/13/20 12:14	B0J0274	ATS	3540C
Aroclor-1248 (PCB-1248)	ND		1	0.0200	0.0500	ug/100cm2	10/12/20 08:32	10/13/20 12:14	B0J0274	ATS	3540C
<b>Aroclor-1254 (PCB-1254)</b>	<b>5.32</b>		1	0.0200	0.0500	ug/100cm2	10/12/20 08:32	10/13/20 12:14	B0J0274	ATS	3540C
Aroclor-1260 (PCB-1260)	ND		1	0.0200	0.0500	ug/100cm2	10/12/20 08:32	10/13/20 12:14	B0J0274	ATS	3540C
Aroclor-1262 (PCB-1262)	ND		1	0.0200	0.0500	ug/100cm2	10/12/20 08:32	10/13/20 12:14	B0J0274	ATS	3540C
Aroclor-1268 (PCB-1268)	ND		1	0.0200	0.0500	ug/100cm2	10/12/20 08:32	10/13/20 12:14	B0J0274	ATS	3540C

#### Recovery

Surrogate: Decachlorobiphenyl	32.7%
Surrogate: Tetrachloro-m-xylene	66.3%

#### Acceptance Criteria

30-150	10/12/20 08:32	10/13/20 12:14	B0J0274	ATS	3540C
30-150	10/12/20 08:32	10/13/20 12:14	B0J0274	ATS	3540C



A KYZER LABS COMPANY

# AMERICAN ENVIRONMENTAL TESTING LABORATORY

2834 North Naomi Street Burbank, CA 91504 • ELAP# 1541 & 2402 • LACSD# 10181  
 TEL (888) 288-AETL • (818) 845-8200 • www.aetlab.com

NV5	AETL Job Number: BBJ0144	Site: Malibu High School
3777 Long Beach Boulevard, Annex Building	Project Number: SMSD-20-9592	
Long Beach, CA 90807	Attention: Jonathan Barkman	
	Project Name: Malibu High School	Reported: 10/13/2020 17:14

## Analytical Results

Client ID: N-3

Lab ID: BBJ0144-03 (Wipe)

Sampled: 10/09/20 15:40

Analyte	Result	Qualifier	Dilution	MDL	RL	Units	Prepared Date/Time	Analyzed Date/Time	Batch	Analyst Initials	Prep. Method
---------	--------	-----------	----------	-----	----	-------	--------------------	--------------------	-------	------------------	--------------

### PCBs

Method: EPA 8082

Aroclor-1016 (PCB-1016)	ND		1	0.0200	0.0500	ug/100cm2	10/12/20 08:32	10/13/20 12:33	BJ0274	ATS	3540C
Aroclor-1221 (PCB-1221)	ND		1	0.0200	0.0500	ug/100cm2	10/12/20 08:32	10/13/20 12:33	BJ0274	ATS	3540C
Aroclor-1232 (PCB-1232)	ND		1	0.0200	0.0500	ug/100cm2	10/12/20 08:32	10/13/20 12:33	BJ0274	ATS	3540C
Aroclor-1242 (PCB-1242)	ND		1	0.0200	0.0500	ug/100cm2	10/12/20 08:32	10/13/20 12:33	BJ0274	ATS	3540C
Aroclor-1248 (PCB-1248)	ND		1	0.0200	0.0500	ug/100cm2	10/12/20 08:32	10/13/20 12:33	BJ0274	ATS	3540C
Aroclor-1254 (PCB-1254)	ND		1	0.0200	0.0500	ug/100cm2	10/12/20 08:32	10/13/20 12:33	BJ0274	ATS	3540C
Aroclor-1260 (PCB-1260)	ND		1	0.0200	0.0500	ug/100cm2	10/12/20 08:32	10/13/20 12:33	BJ0274	ATS	3540C
Aroclor-1262 (PCB-1262)	ND		1	0.0200	0.0500	ug/100cm2	10/12/20 08:32	10/13/20 12:33	BJ0274	ATS	3540C
Aroclor-1268 (PCB-1268)	ND		1	0.0200	0.0500	ug/100cm2	10/12/20 08:32	10/13/20 12:33	BJ0274	ATS	3540C
			Recovery		Acceptance Criteria						
Surrogate: Decachlorobiphenyl	33.2%			30-150	10/12/20 08:32	10/13/20 12:33	BJ0274	ATS	3540C		
Surrogate: Tetrachloro-m-xylene	71.7%			30-150	10/12/20 08:32	10/13/20 12:33	BJ0274	ATS	3540C		



A KYZER LABS COMPANY

# AMERICAN ENVIRONMENTAL TESTING LABORATORY

2834 North Naomi Street Burbank, CA 91504 • ELAP# 1541 & 2402 • LACSD# 10181  
 TEL (888) 288-AETL • (818) 845-8200 • www.aetlab.com

NV5	AETL Job Number: BBJ0144	Site: Malibu High School
3777 Long Beach Boulevard, Annex Building	Project Number: SMSD-20-9592	
Long Beach, CA 90807	Attention: Jonathan Barkman	
	Project Name: Malibu High School	Reported: 10/13/2020 17:14

## Quality Control Results

### PCBs (EPA 8082)

Analyte	Result	MDL	RL	Units	Spike Level	Source Result	%REC	%REC Limits	RPD	RPD Limit	Qualifier
<b>Batch: B0J0274 - 3540C</b>											
Method Blank (B0J0274-BLK1)						Prepared: 10/12/2020 08:32					
						Analyzed: 10/13/2020 11:34					
Aroclor-1016 (PCB-1016)	ND	0.0200	0.0500	ug/100cm2							
Aroclor-1221 (PCB-1221)	ND	0.0200	0.0500	ug/100cm2							
Aroclor-1232 (PCB-1232)	ND	0.0200	0.0500	ug/100cm2							
Aroclor-1242 (PCB-1242)	ND	0.0200	0.0500	ug/100cm2							
Aroclor-1248 (PCB-1248)	ND	0.0200	0.0500	ug/100cm2							
Aroclor-1254 (PCB-1254)	ND	0.0200	0.0500	ug/100cm2							
Aroclor-1260 (PCB-1260)	ND	0.0200	0.0500	ug/100cm2							
Aroclor-1262 (PCB-1262)	ND	0.0200	0.0500	ug/100cm2							
Aroclor-1268 (PCB-1268)	ND	0.0200	0.0500	ug/100cm2							
<hr/>											
Surrogate: Decachlorobiphenyl	0.0169			ug/100cm2	0.0500		33.7	30-150			
Surrogate: Tetrachloro-m-xylene	0.0335			ug/100cm2	0.0500		67.0	30-150			



A KYZER LABS COMPANY

# AMERICAN ENVIRONMENTAL TESTING LABORATORY

2834 North Naomi Street Burbank, CA 91504 • ELAP# 1541 & 2402 • LACSD# 10181  
 TEL (888) 288-AETL • (818) 845-8200 • www.aetlab.com

NV5	AETL Job Number: BBJ0144	Site: Malibu High School
3777 Long Beach Boulevard, Annex Building	Project Number: SMSD-20-9592	
Long Beach, CA 90807	Attention: Jonathan Barkman	
	Project Name: Malibu High School	Reported: 10/13/2020 17:14

## Quality Control Results

### PCBs (EPA 8082)

Analyte	Result	MDL	RL	Units	Spike Level	Source Result	%REC	%REC Limits	RPD	RPD Limit	Qualifier
<b>Batch: B0J0274 - 3540C (Continued)</b>					<b>Prepared: 10/12/2020 08:32</b>						
LCS (B0J0274-BS1)					<b>Analyzed: 10/13/2020 10:55</b>						
Aroclor-1016 (PCB-1016)	0.586	0.0200	0.0500	ug/100cm2	1.00		58.6	50-150			
Aroclor-1260 (PCB-1260)	0.611	0.0200	0.0500	ug/100cm2	1.00		61.1	50-150			
<hr/>											
Surrogate: Decachlorobiphenyl	0.0213			ug/100cm2	0.0500		42.7	30-150			
Surrogate: Tetrachloro-m-xylene	0.0302			ug/100cm2	0.0500		60.4	30-150			
<hr/>											
LCSD (B0J0274-BSD1)					<b>Analyzed: 10/13/2020 11:15</b>						
Aroclor-1016 (PCB-1016)	0.619	0.0200	0.0500	ug/100cm2	1.00		61.9	50-150	5.59	40	
Aroclor-1260 (PCB-1260)	0.564	0.0200	0.0500	ug/100cm2	1.00		56.4	50-150	8.03	40	
<hr/>											
Surrogate: Decachlorobiphenyl	0.0192			ug/100cm2	0.0500		38.4	30-150			
Surrogate: Tetrachloro-m-xylene	0.0416			ug/100cm2	0.0500		83.1	30-150			



A KYZER LABS COMPANY

## AMERICAN ENVIRONMENTAL TESTING LABORATORY

2834 North Naomi Street Burbank, CA 91504 • ELAP# 1541 & 2402 • LACSD# 10181  
 TEL (888) 288-AETL • (818) 845-8200 • www.aetlab.com

NV5	AETL Job Number: BBJ0144	Site: Malibu High School
3777 Long Beach Boulevard, Annex Building	Project Number: SMSD-20-9592	
Long Beach, CA 90807	Attention: Jonathan Barkman	
	Project Name: Malibu High School	Reported: 10/13/2020 17:14

### Qualifiers and Definitions

Item	Definitions
% wt	Percent Weight
%REC	Percent Recovery
°C	Degrees Celsius
AETL	American Environmental Testing Laboratory, LLC
C	Carbon
CARB	California Air Resources Board
COC	Chain of Custody
DRO	Diesel Range Organics
Dup	Duplicate
ELAP	Environmental Laboratory Accreditation Program
EPA	Environmental Protection Agency
GRO	Gasoline Range Organics
HC	Hydrocarbon
LACSD	Los Angeles County Sanitation Districts
LCS	Laboratory Control Sample - A sample matrix, free from the analytes of interest, spiked with verified known amounts of analytes.
LCSD	Laboratory Control Sample Duplicate - A replicate of Laboratory Control Sample.
LOQ	Limit of Quantitation
MDL	Method Detection Limit - The minimum measured concentration of a substance that can be reported with 99% confidence. MDL is statistically derived number which is specific for each instrument, each method and each compound.
mg/kg	Miligrams per Kilogram
mg/L	Miligrams per Liter
MRO	Motor oil Range Organics
MS	Matrix Spike - A sample prepared, taken through all sample preparation and analytical steps of the procedure and analyzed as an independent test results.
MSD	Matrix Spike Duplicate - A replicate of Matrix Spike Sample.
N	No
ND	Analyte is not detected below Method Detection Limit.
ng/m3	Nanograms per cubic meter
NIOSH	National Institute for Occupational Safety and Health
nL/L	Nanoliters per Liter
NTU	Nephelometric Turbidity Units
Ohm-cm	Ohms per centimeter
OSHA	Occupational Safety and Health Administration
PCB	Polychlorinated Biphenyl
RL	Reporting Limit - The lowest concentration at which an analyte can be detected in a sample and its concentration can be reported with a specified degree of confidence, accuracy and precision. For usage at AETL, RL is equivalent to LOQ.
RPD	Relative Percent Difference



A KYZER LABS COMPANY

# AMERICAN ENVIRONMENTAL TESTING LABORATORY

2834 North Naomi Street Burbank, CA 91504 • ELAP# 1541 & 2402 • LACSD# 10181  
TEL (888) 288-AETL • (818) 845-8200 • www.aetlab.com

NV5	AETL Job Number: BBJ0144	Site: Malibu High School
3777 Long Beach Boulevard, Annex Building	Project Number: SMSD-20-9592	
Long Beach, CA 90807	Attention: Jonathan Barkman	
	Project Name: Malibu High School	Reported: 10/13/2020 17:14

SIM	Selective Ion Monitoring
SPLP	Synthetic Precipitation Leaching Procedure
STLC	Soluble Threshold Limit Concentration
TCLP	Toxicity Characteristic Leaching Procedure
TPH	Total Petroleum Hydrocarbons
TTLC	Total Threshold Limit Concentrations
ug/kg	Micrograms per Kilogram
ug/L	Micrograms per Liter
ug/m3	Micrograms per cubic meter
WET	Waste Extraction Test
Y	Yes
ZHE	Zero Headspace Extraction

