

Santa Monica-Malibu Unified School District



WILL ROGERS  
LEARNING COMMUNITY



# Building Futures

## Stay Informed with Building Futures!

Follow the progress of construction projects at your neighborhood school, from initial designs to the final touches. See how your bond dollars are making a difference—building better futures for our students and community!

- ✓ Building updates
- ✓ Building features
- ✓ Project renderings

Bond Dollars  
at Work!



Spring 2025

## Will Rogers Learning Community

### Building Tomorrow's Future: New Early Elementary Building Project

Construction of the new early elementary building at Will Rogers' Learning Community began in the summer of 2024 and is making progress. This transformative project is funded through Bond Measure SMS, reflecting the community's commitment to providing modern, high-quality learning environments for future-ready learners.



Construction is on schedule for the early education building to open in August 2025.

### New Early Elementary Building Project

Previously, only two of the kindergarten classrooms were housed in appropriate spaces, while the rest along with the transitional kindergarten (TK) classrooms were located in substandard rooms and aging bungalows.



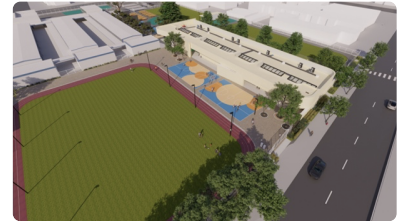
The introduction of universal transitional kindergarten, which allows all four-year-olds to attend classes tailored to their developmental needs, created a demand for appropriate learning spaces. The new building includes four kindergarten and three TK classrooms, all exceeding the latest state standards for size, support and in-class restrooms. A dedicated playground will serve and inspire all TK and kindergarten students.

### Project Overview

Once the early childhood building (currently under construction) is completed, the portable classrooms will be removed, and the kindergarten classrooms will be transformed. The two existing kindergarten classrooms will become state-of-the-art innovation labs. These 1,600 square foot labs will have access to a shared 4,000 square foot landscaped courtyard, facilitating outdoor learning experiences. The new environmentally friendly synthetic field and track will also provide a safe play surface that will expand available play space.



To alleviate parking challenges, a new parking lot will be built north of the new building in summer 2025. The parking lot will be the first half of the new drop off and pick up area for Rogers' that will connect 17th Street to 16th Street.



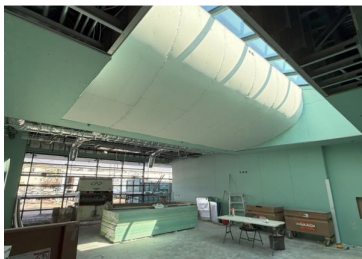
Construction on a working campus always presents challenges, but the SMMUSD Facility Improvement Projects Department is committed to minimizing disruptions for students and staff while ensuring these enhancements benefit generations to come.

Stay tuned for more updates as we continue to build the future of Rogers'!

Learn more about the new early education building [here](#).

The future is bright for Rogers' and with the community's support the sky is the limit!

*"A school building is more than a physical structure providing housing, light, heat, and shelter from the elements; it is the one expression of the community's commitment to education." -Donald Leu*



### New Early Education Building

Installed sky light.



### New Early Education Building

Crews installed new front glass.



### New Early Education Building

Plumbing installation and curved framing.



**Santa Monica USD**

<https://bit.ly/FIPHomepage>



