

Grant Elementary School

Early Learning Building & Library Modernization

Hello Grant Neighbors!

Grant Elementary School Early Learning Building Modernization, Library Modernization & New Classroom Bldg., July 2025

Dear Parents, Staff and Members of the Community,

The Santa Monica-Malibu Unified School District is progressing with the construction at Grant Elementary School. The project includes a new transitional kindergarten and early childhood renovation project. Future phases will include the installation of a portable library, the modernization of the existing library and historic courtyard, and the construction of a new two-story classroom building.



Current Construction:

TK/Pre-K Progress:

- Acoustical ceiling grid installation is complete in all three classrooms
- Installation of linear and can lights is nearly finished
- Ceramic tile work in the new restrooms are complete
- Fan coil units have been set on their platforms and are ready for final connections; startup has been rescheduled for 7/2/25
- Casework installation is currently underway Interim Library Modular



Library Renovation, Historic Courtyard, and Interim Library Modular:

- Temporary fencing has been installed around the Historic Courtyard and Buildings F and G
- Underground utilities have been located and marked
- District equipment salvage has been completed
- Scraping of the Historic Courtyard is ongoing
- Interior setup of the interim library is complete; awaiting low voltage data installation and the new ADA ramp

New Classroom Bldg. and Shade Structure:

- Perimeter fencing is in place
- Existing underground utilities have been identified and marked
- A PLA meeting with trade unions is scheduled for 7/1/25, with soft demolition tentatively starting on 7/2/25
- Fabrication of the shade structure has begun off-site

Construction managers and contractors maintain open communication with the school principal and staff, keeping them informed of any potential impacts to classroom activities. Any issues that arise are addressed promptly.

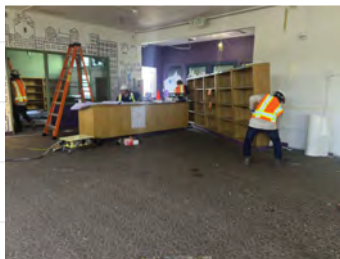


Thank you for your continued patience and understanding throughout the construction process.

We apologize for any noise and dust caused by the ongoing work. Please note that demolition and construction activities take place on weekdays between 8:00 a.m. and 6:00 p.m., and on Saturdays from 9:00 a.m. to 5:00 p.m. We are committed to minimizing the impact on the neighborhood and classrooms as much as possible.

Learn more [here](#).

For more information on Grant's campus projects, please contact Fonder-Salari, Inc. Project Manager Norman Raymundo at rnorman@smmusd.org.



Library Renovation, Historic Courtyard and Interim Library Modular:

Salvaging of District equipment is complete.



New Classroom Bldg. and Shade Structure

Perimeter fencing has been installed.



TK/Pre-K

The landscaping and concrete pathway have been installed.

Grant Address:

Address: [2368 Pearl St. Santa Monica, CA 90405](#)



Santa Monica-Malibu USD

<https://www.smmusd.org/>