
APPENDIX F.

AB 52 CONSULTATION DOCUMENTATION

This page left blank intentionally.



SANTA MONICA - MALIBU UNIFIED SCHOOL DISTRICT

May 13, 2022

Michael Mirelez, Cultural Resource Coordinator
Torres Martinez Desert Cahuilla Indians
P.O. Box 1160
Thermal, CA 92274

**RE: ASSEMBLY BILL 52 CONSULTATION FOR THE FRANKLIN ELEMENTARY SCHOOL
CAMPUS PLAN PROJECT, SANTA MONICA-MALIBU UNIFIED SCHOOL DISTRICT, CITY OF
SANTA MONICA, CALIFORNIA**

Dear Mr. Mirelez:

The Santa Monica-Malibu Unified School District (District) is requesting the initiation of Assembly Bill (AB) 52 consultation on the Franklin Elementary School Campus Plan Project (project) located at 2400 Montana Avenue, Santa Monica, California. Please consider this letter and preliminary project information as the initiation of the AB 52 consultation under the California Environmental Quality Act (CEQA).

Project Description

The project proposes to implement a long-range campus plan to update the school facilities to the District's Educational Specifications at the existing 5.6-acre Franklin Elementary School. The updates consist of priority and future construction projects, and would neither increase the capacity of the School, nor change the attendance boundaries. The proposed activities consist of removing and demolishing eight (8) buildings and nine (9) portables, constructing six (6) new buildings, and renovating two (2) buildings and outdoor areas on the existing school campus. The District is preparing an Initial Study/Mitigated Negative Declaration under CEQA for the proposed project. Please see the attached figures depicting the project site.

You are a traditionally and culturally affiliated California Native American tribal representative who has requested notice of projects where AB 52 applies within the City. We are requesting any information that you may have regarding tribal cultural resources (as defined by Public Resources Code 21074) within the project area so that this information can be incorporated into the planning phase of the project. Please respond within 30 days of the date of this letter.

Your comments and concerns are important to the District and we look forward to hearing from you. If you have any questions or comments regarding the project, I can be contacted via email at: jcapata@smmusd.org or by phone at (310) 713-5897.

Sincerely,



Carey Upton
Chief Operations Officer
Santa Monica-Malibu Unified School District

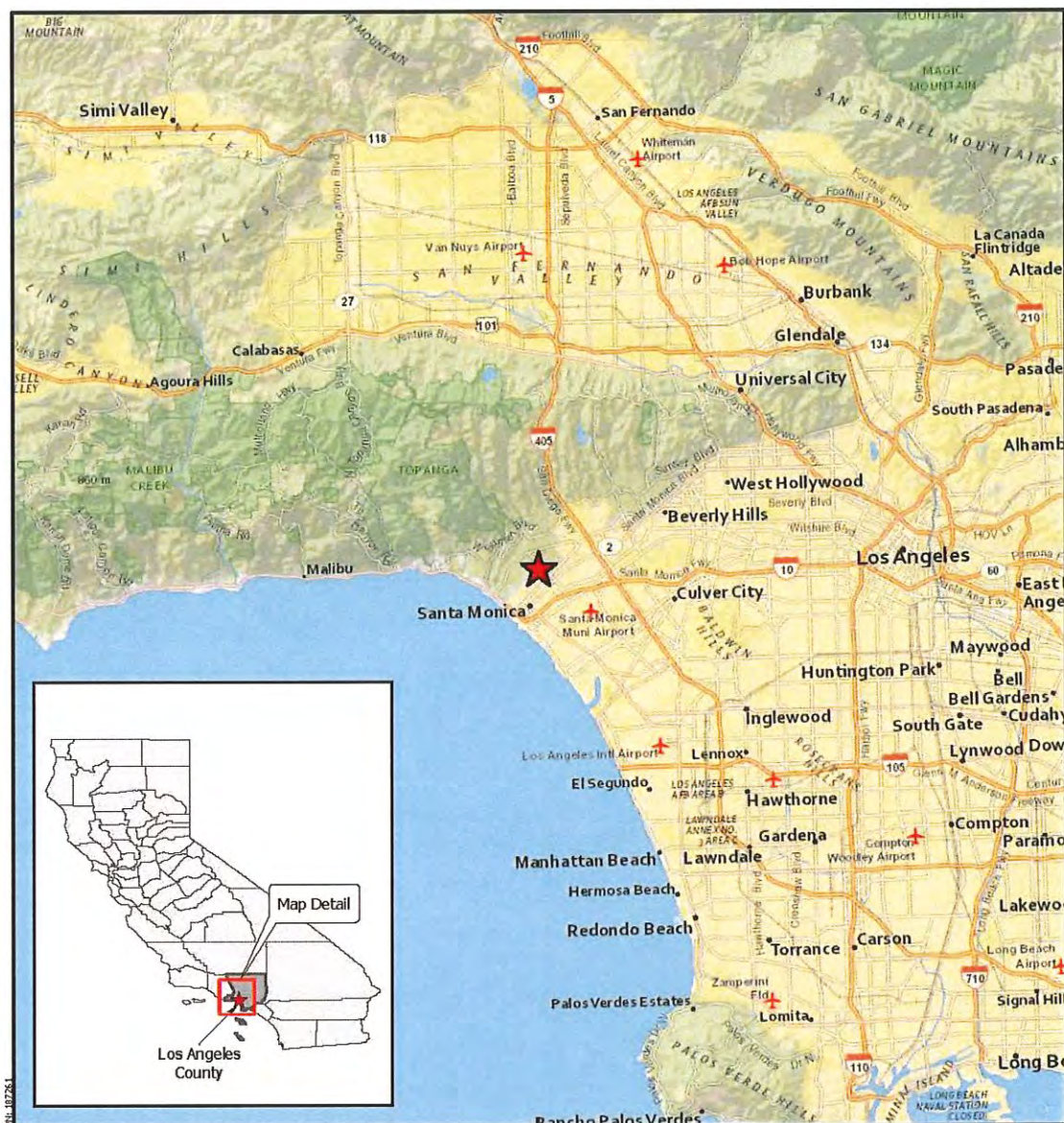
Attachments:

Figure 1: Regional Vicinity

Figure 2: Project Vicinity

Figure 3: Project Area

Figure 1 Regional Vicinity



 Project Location

Michael Baker
INTERNATIONAL



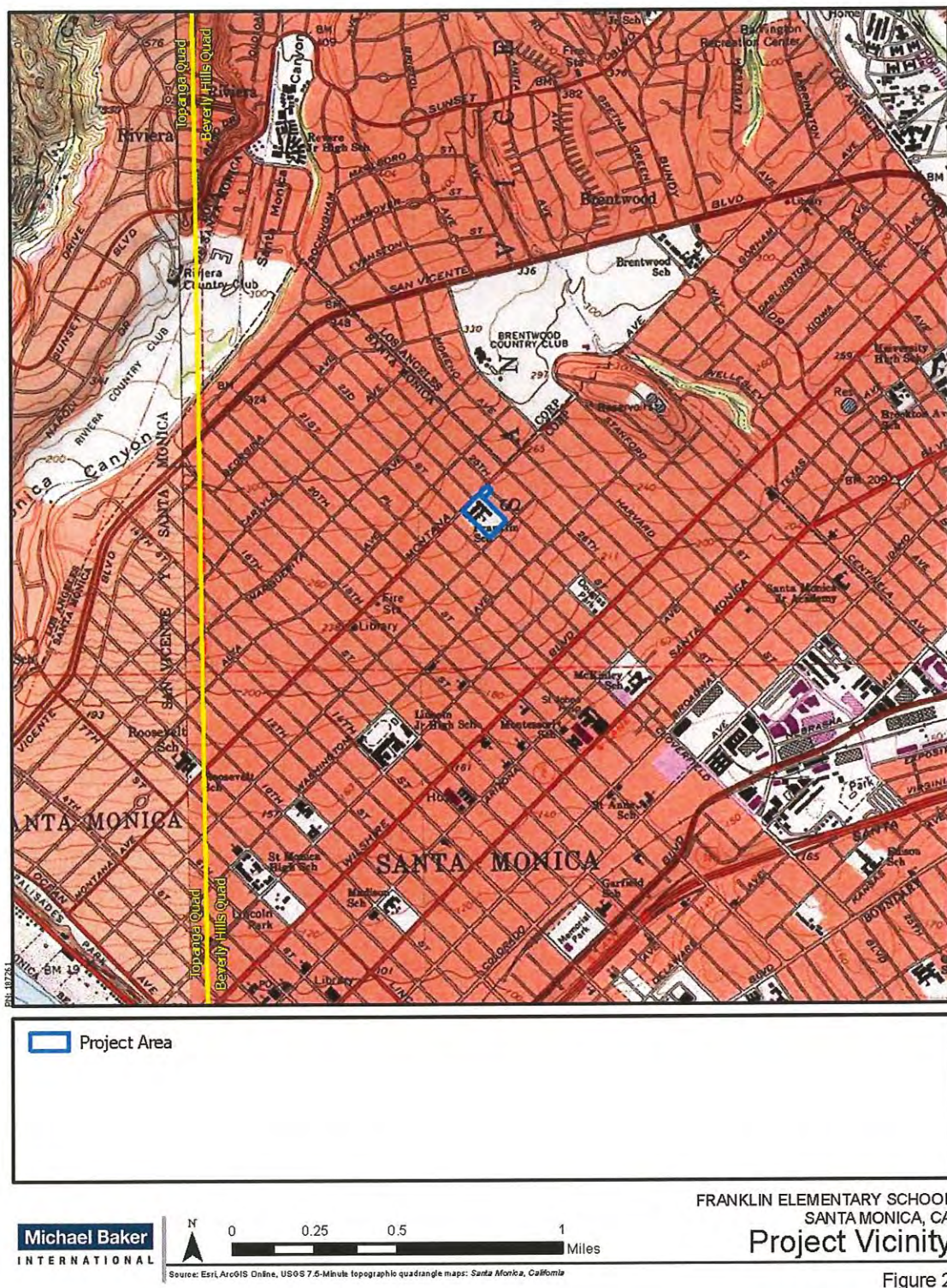
Source: Esri, ArcGIS Online, National Geographic World Map: Santa Monica, California

FRANKLIN ELEMENTARY SCHOOL
SANTA MONICA, CA
Regional Vicinity

Figure 1

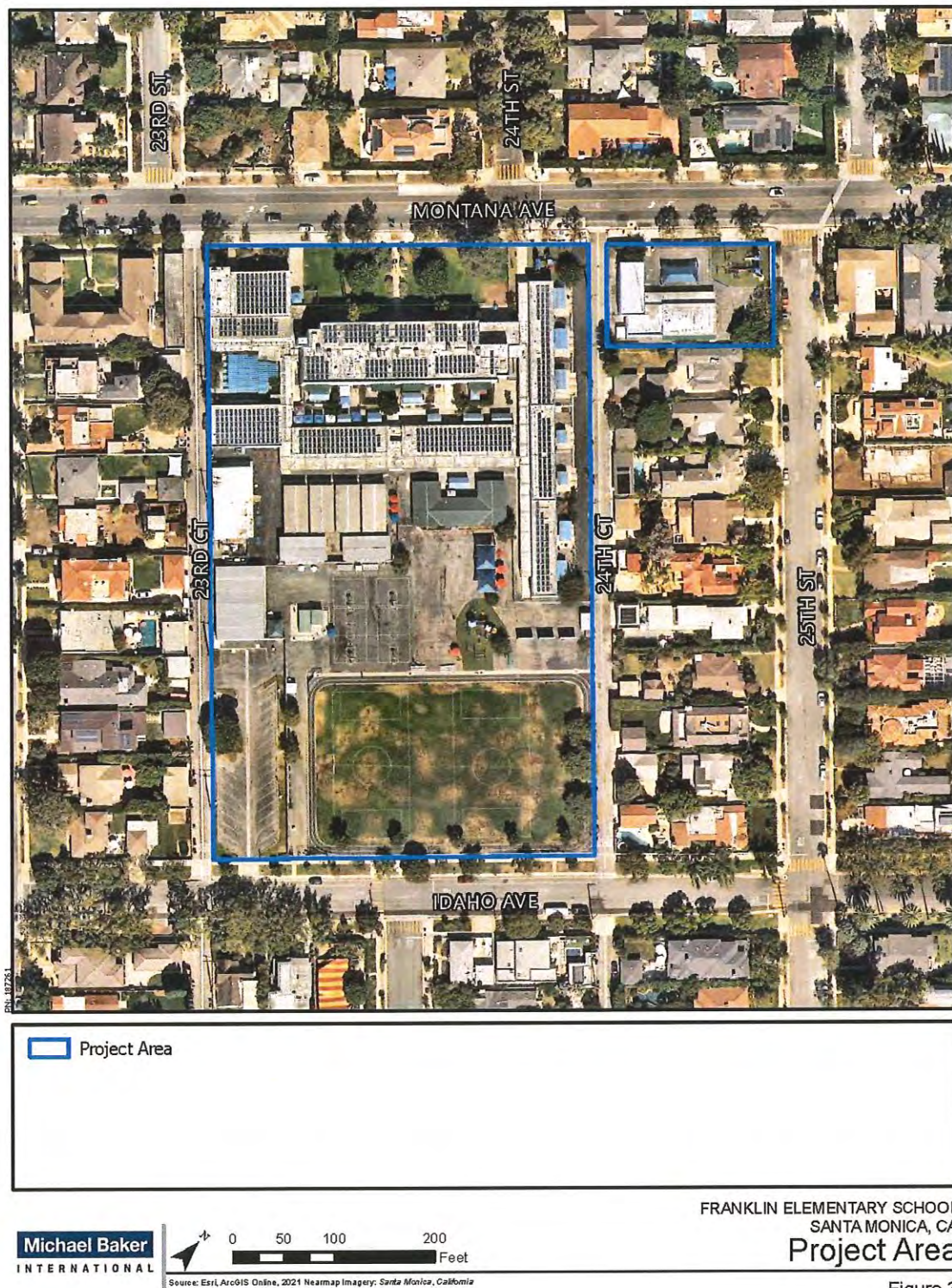
This page intentionally left blank.

Figure 2 **Project Vicinity**



This page intentionally left blank.

Figure 3 **Project Area**





GABRIELENO BAND OF MISSION INDIANS - KIZH NATION
Historically known as The Gabrielino Tribal Council - San Gabriel Band of Mission Indians
recognized by the State of California as the aboriginal tribe of the Los Angeles basin

May 19, 2022

Project Name: Franklin Elementary School Campus Plan Project

Dear Carey Upton

Thank you for your letter dated May 13, 2022 regarding AB52 consultation. The above proposed project location is within our Ancestral Tribal Territory; therefore, our Tribal Government requests to schedule a consultation with you as the lead agency, to discuss the project and the surrounding location in further detail.

Please contact us at your earliest convenience. ***Please Note: AB 52, "consultation" shall have the same meaning as provided in SB 18 (Govt. Code Section 65352.4).***

Thank you for your time,

Andrew Salas, Chairman
Gabrieleno Band of Mission Indians – Kizh Nation
1(844)390-0787

Andrew Salas, Chairman

Albert Perez, treasurer I

Nadine Salas, Vice-Chairman

Martha Gonzalez Lemos, treasurer II

Dr. Christina Swindall Martinez, secretary

Richard Gradias, Chairman of the council of Elders

PO Box 393 Covina, CA 91723

admin@gabrielenoindians.org



SANTA MONICA - MALIBU UNIFIED SCHOOL DISTRICT

May 13, 2022

Andrew Salas, Chairman
Gabrieleño Band of Mission Indians – Kizh Nation
P.O. Box 393
Covina, CA 91723

**RE: ASSEMBLY BILL 52 CONSULTATION FOR THE FRANKLIN ELEMENTARY SCHOOL
CAMPUS PLAN PROJECT, SANTA MONICA-MALIBU UNIFIED SCHOOL DISTRICT, CITY OF
SANTA MONICA, CALIFORNIA**

Dear Mr. Salas:

The Santa Monica-Malibu Unified School District (District) is requesting the initiation of Assembly Bill (AB) 52 consultation on the Franklin Elementary School Campus Plan Project (project) located at 2400 Montana Avenue, Santa Monica, California. Please consider this letter and preliminary project information as the initiation of the AB 52 consultation under the California Environmental Quality Act (CEQA).

Project Description

The project proposes to implement a long-range campus plan to update the school facilities to the District's Educational Specifications at the existing 5.6-acre Franklin Elementary School. The updates consist of priority and future construction projects, and would neither increase the capacity of the School, nor change the attendance boundaries. The proposed activities consist of removing and demolishing eight (8) buildings and nine (9) portables, constructing six (6) new buildings, and renovating two (2) buildings and outdoor areas on the existing school campus. The District is preparing an Initial Study/Mitigated Negative Declaration under CEQA for the proposed project. Please see the attached figures depicting the project site.

You are a traditionally and culturally affiliated California Native American tribal representative who has requested notice of projects where AB 52 applies within the City. We are requesting any information that you may have regarding tribal cultural resources (as defined by Public Resources Code 21074) within the project area so that this information can be incorporated into the planning phase of the project. Please respond within 30 days of the date of this letter.

Your comments and concerns are important to the District and we look forward to hearing from you. If you have any questions or comments regarding the project, I can be contacted via email at: jcapata@smmusd.org or by phone at (310) 713-5897.

Sincerely,



Carey Upton
Chief Operations Officer
Santa Monica-Malibu Unified School District

Attachments:

Figure 1: Regional Vicinity

Figure 2: Project Vicinity

Figure 3: Project Area

Figure 1 Regional Vicinity



★ Project Location

Michael Baker
INTERNATIONAL



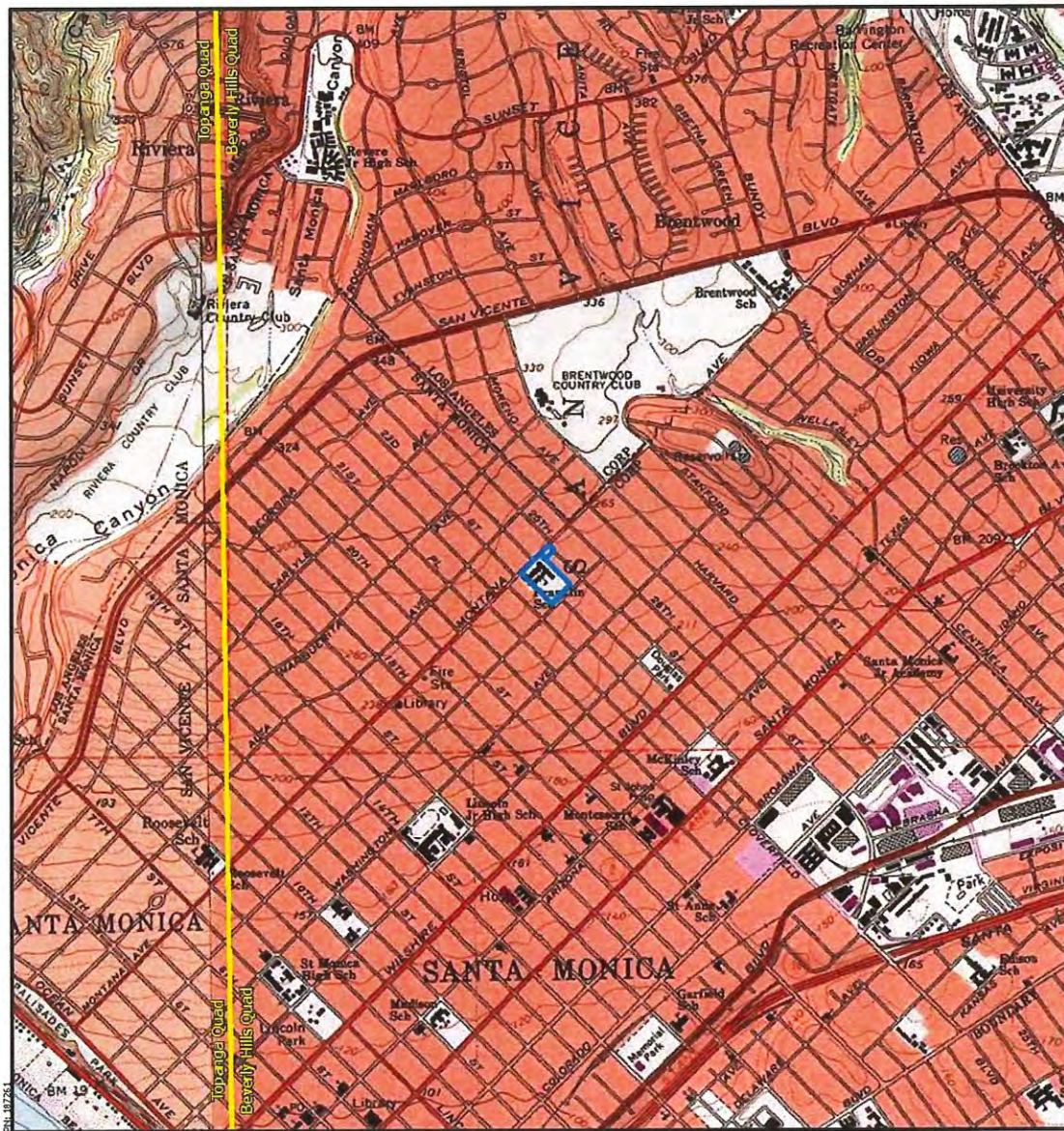
Source: Esri, ArcGIS Online, National Geographic World Map: Santa Monica, California

FRANKLIN ELEMENTARY SCHOOL
SANTA MONICA, CA
Regional Vicinity

Figure 1

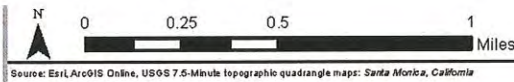
This page intentionally left blank.

Figure 2 Project Vicinity



 Project Area

Michael Baker
INTERNATIONAL



FRANKLIN ELEMENTARY SCHOOL
SANTA MONICA, CA
Project Vicinity

Figure 2

This page intentionally left blank.

Figure 3 **Project Area**

