

# BUILDING FUTURES<sup>1</sup>

FROM THE FACILITY IMPROVEMENT PROJECTS OFFICE  
OF THE SANTA MONICA-MALIBU UNIFIED SCHOOL DISTRICT



## Michelle and Barack Obama Center for Inquiry and Exploration | FALL 2022

Welcome Santa Monica Alternative School House (SMASH) families, staff and students to your new home at the Michelle and Barack Obama Center for Inquiry and Exploration for the 2022-23 school year. The Obama Center is an established campus that has had several lives. It was originally John Muir Elementary School and later became Olympic High School. The school then transitioned to its current name the Michelle and Barack Obama Center for Inquiry and Exploration in 2019, housing Olympic High School, adult education and the Santa Monica High School project-based learning pathway. Take a look at what has been completed over the years:



### Heating, Ventilation & Air Conditioning (HVAC)

Installation of the HVAC system is complete. Before modernization the classroom spaces only had heat and minimal ventilation. When temperatures rose wall fans were the only reprieve from learning loss.

- The HVAC system provides fresh ventilated air, more efficient heat in the winter and cooling in the summer. MERV 13 filters provide a high level of filtration of germs and dust.
- Programmed thermostats allow the systems to be sustainable.
- The HVAC system is now in use providing students a comfortable learning space and a healthier environment.

*Thank You!*

We appreciate your support as we make improvements that are paid for with funds from bond measures ES and SMS.

## Upgraded Fire Alarm Systems



### Upgraded Fire Alarm Systems

Children spend many hours at school, so it is crucial that their educational environment is safe and prepared for emergencies. A school fire alarm system is important to ensuring everyone inside the school is able to exit safely and be accounted for during an emergency. A new state-of-the-art fire alarm system has been installed at the Obama Center.

- The alarm system is voice activated.
- System identifies the specific room in trouble.
- This should reduce false alarms.

## Security Cameras



### Security Cameras

To keep our students safe, security cameras were fully installed, programmed and staff have been trained in the operation of the security system.

- Cameras are located around the perimeter of the campus and outdoor areas.
- They will support increased safety and property management.

## Upgraded Gates



### Gates

To help keep students safe security gates and locking entrances were installed around the campus perimeter.

- The former adult education office will now be the new SMASH office providing easier campus access for students, visitors and parents while maintaining an appropriate security perimeter.



# More Completed Work

3

## Before and after photo of classroom.

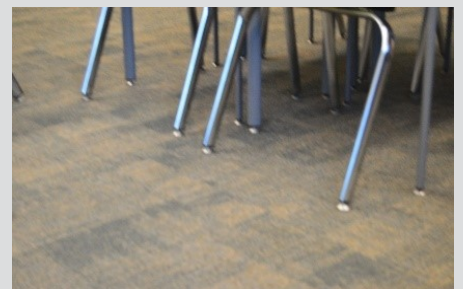


### Furniture

Old classroom furniture was replaced with new 21st-century furniture. The furniture supports flexibility, and allows for differing modes of learning, thus, improving student engagement.

- Student desks have been installed throughout classrooms.
- Upgraded furniture that was planned for the SMASH campus has been moved to the Obama Center.

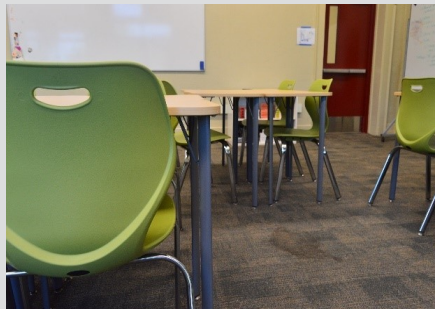
## Before and after photo of school hallway.



- Carpeting was installed.
- Non-wax flooring throughout hallways and classrooms.



- Walk off mats at every entrance.



- Interior of classrooms painted.



# More Completed Work

4

## Updated Classroom Technology



### Updated Classroom Technology

Classrooms were updated with state-of-the-art projectors and whiteboards. The updated equipment will be used in daily learning lessons.

- Light emitting diodes were installed to help reduce electrical costs.

## Exterior Painted



- To give the school a fresh look the exterior was painted.

## Windows Installed

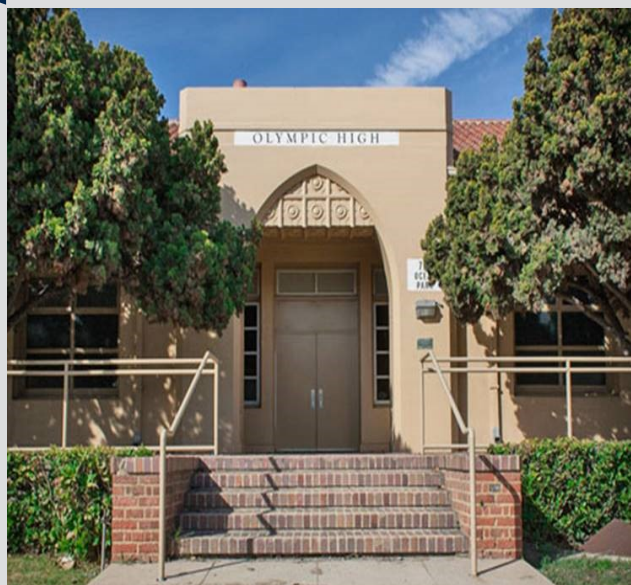


- A fresh coat of paint on the trims of new doors and windows.

# More Completed Work

5

Before and after photo of school signage.



- Signage reflecting the name change helps direct visitors.

Before and after photo of media center.



## Media Center

Lighting was installed in the media center, along with acoustical treatments to help absorb or diffuse sound in order to improve the acoustic quality of the space. The space is great for students to collaborate and study.



## Before and after photo of renovated auditorium.



### Upgraded Auditorium

The upgraded auditorium creates a state-of-the-art learning space for children. The new stage is large enough to hold student performances and events. The old auditorium was dark and outdated.

- Paint, flooring and lighting were installed.
- Stage lighting, acoustical sound panels and curtains were installed.

## Shade Structures



### Shade structures

Were created in outdoor areas creating a comfortable space for learning and play.

- Temperature reduction in shaded areas.

## Sports Courts



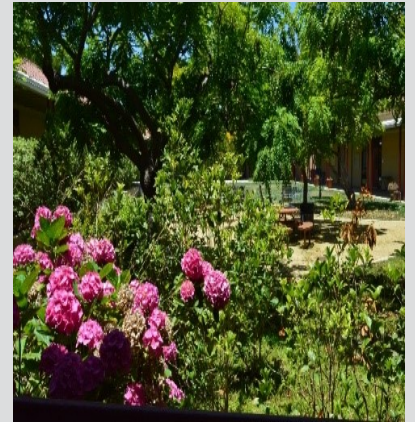
- Sports courts were improved and some were added, including pickleball.



# More Completed Work

7

Before and after photos of landscaping.



## Landscaping

Students can enjoy outdoor time by having lunch under a tree with friends or reading near a flower garden. Having lush green landscaping helps create a fun and comfortable school environment.

More landscaping.



Four trees from Lincoln Middle School were transplanted in the Obama Center playground area. The trees will provide shade and a comfortable space for learning and play for generations to come.



# More Completed Work

8

Before and after photos of playground.



## Synthetic Turf



### Synthetic turf

New synthetic turf was added to the playground. Maintenance for a natural grass lawn involves mowing, edging, aeration, weed control and watering. It's far more cost-effective to install synthetic turf. For example, a real grass sports field needs between 500,000 to one million gallons of water each year. Turf used is made with cork, providing an environmentally friendly and injury-reducing surface for students at play.

## New Asphalt



New asphalt near the playground was repaved to give area a fresh look. Repaving asphalt helps reduce trip hazards. It also gives the playground a uniform look.



## New Play structure

What's New!



### New Play Structure

A playground is more than just fun. The type of play that happens on a playground represents one of the more important parts of a child's development.

Playgrounds provide opportunities for children to practice a range of social, emotional, physical and mental skills. The movements children perform on a playground build motor skills, along with exercise.

Two new tetherball poles, stripping for four square and other games will be completed by the end of September 2022.

## Thank You!

A school building is more than a physical structure providing housing, light, heat and shelter from the elements; it is the one expression of the community's commitment to education.  
Donald Leu-1965

We appreciate your support as we make improvements that are paid for with funds from bond measures ES and SMS.