

Santa Monica-Malibu Unified School District

GRANT ELEMENTARY SCHOOL

SMMUSD
SANTA MONICA-MALIBU UNIFIED SCHOOL DISTRICT

Building Futures

Stay Informed with Building Futures!

Follow the progress of construction projects at your neighborhood school, from initial designs to the final touches. See how your bond dollars are making a difference—building better futures for our students and community!

- ✓ Building updates
- ✓ Building features
- ✓ Project renderings

Bond
Measure
QS!



Summer 2025

Grant Elementary School

Building Tomorrow's Future: Grant Early Learning Building Modernization and Library Update

Grant Elementary School is undergoing an exciting transformation—with projects recently completed, currently underway, and new ones just beginning. All of this work is made possible through funding from [Bond Measure QS](#), approved by voters in November 2024.



The transitional kindergarten (TK) modernization project will be completed in time for the 4-year-old students to start school in August 2025. The project took four regular classrooms and expanded them into three TK classrooms with teacher work areas and restrooms.

Construction began December 2024. This new 4,500-square-foot building aligns with state standards for early childhood education. The outdoor play area will be expanded to accommodate the growing TK program now required by the state of California.

Construction on the library modernization project began June 2025 and is slated to be completed by August 2026. The project takes the old library which includes several small classrooms and two outdoor areas and reinvents them into a dynamic new library with learning areas for both younger and older students, an innovation lab and two outdoor reading spaces. Demolition and abatement were completed during summer 2025. Construction on the modernized spaces have begun.



The historic garden is being refurbished while maintaining and protecting the over century old trees, new walkways seating areas and learning opportunities are being created. The new garden

will be ready for student use in early 2026.

Site work and foundations have been started for the new classroom building. This new building will house six state-of-the-art classrooms with outdoor learning areas. Construction on the new building will commence this fall 2025. The new building will replace the six aging portable classrooms with new progressive facilities. The building will be completed and occupied by January 2027.

In preparation for these construction projects adjustments have been made to walkways and corridors to ensure the safety of the students. While construction presents challenges, the team remains focused on minimizing disruptions to learning and maintaining a safe environment for all. Following Principal Christian Fuhrer these four projects are being completed as quickly as possible.

The SMMUSD Facility Improvement Projects (FIP) team is committed to minimizing disruptions during construction while ensuring these enhancements benefit generations of students to come.

Learn more about FIP here: <https://bit.ly/FIPHomePage>.

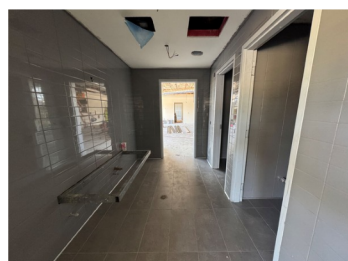


Read more about Grant's campus plan here : <https://www.smmusd.org/Page/5592>.

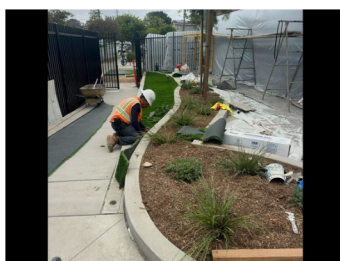
The future is bright for Grant Elementary and with the community's support the sky is the limit!

To help keep you in the know about upcoming events and activities at your neighborhood school, please join the Neighbor Email List here: <https://bit.ly>HelloNeighborSignup>. Be sure to subscribe to one or more schools for updates.

"A school building is more than a physical structure providing housing, light, heat, and shelter from the elements; it is the one expression of the community's commitment to education." -Donald Leu



Early Learning Building
Interior of early learning building modernization.



Early Learning Building
Exterior landscaping.



Early Learning Building
Interior of classroom.