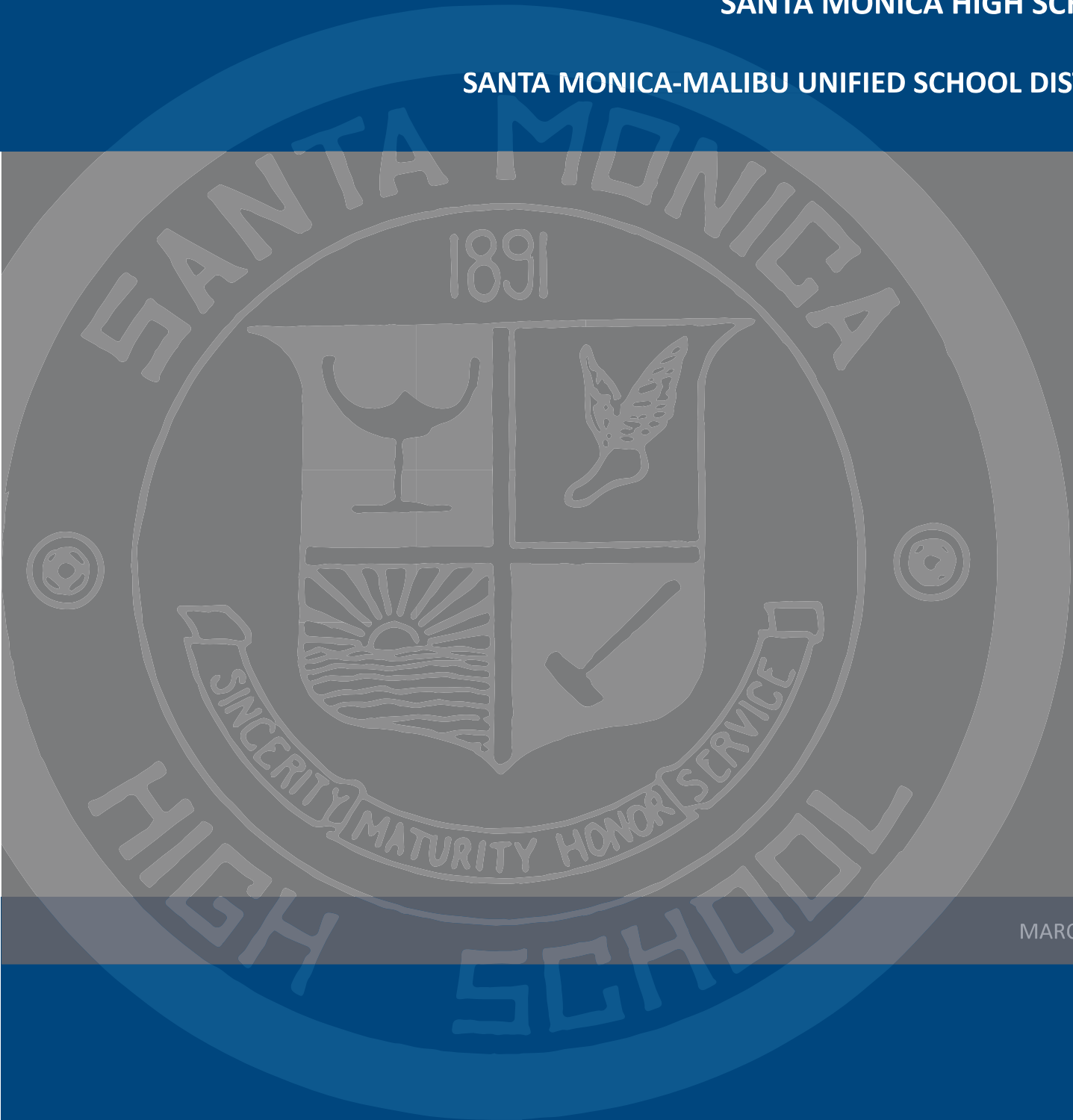


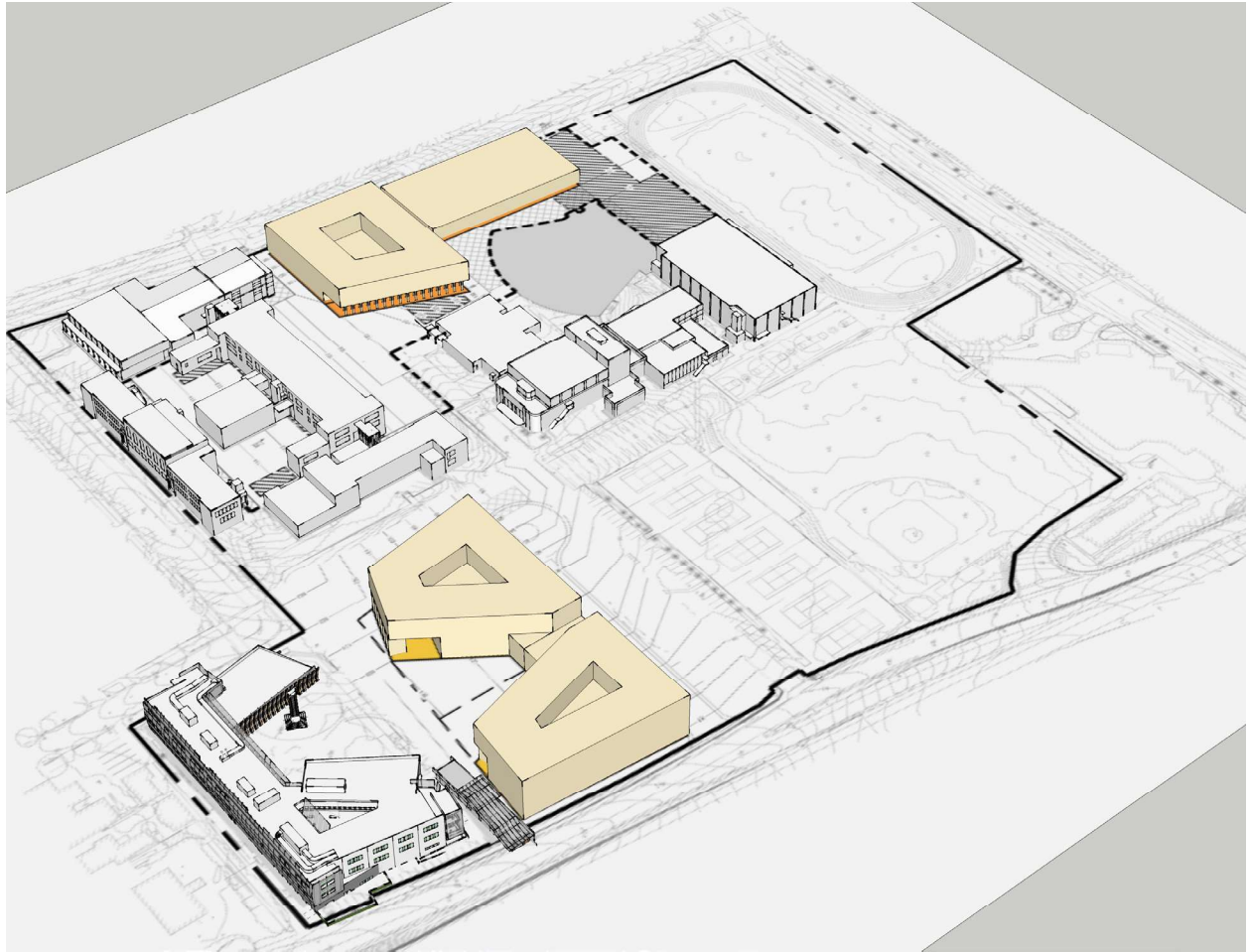
SAMOHI CAMPUS PLAN

SANTA MONICA HIGH SCHOOL

SANTA MONICA-MALIBU UNIFIED SCHOOL DISTRICT



MARCH 2017



-94-

3

PHASE 3

Givens:

- The archeology report for the campus, including Prospect Hill completed. Unforeseen archeological impacts of Prospect Hill may be mitigated during this phase.

Project Description:

• Demolition

- (e) History Building and Prospect Hill (*SCP is based on the History Building being demolished prior to Construction of Phase 3, but may be demolished at the end of Phase 2 or prior to Phase 4 if needed for other uses*) (*Note: the Special education classroom H127 is a separate structure and shall remain; the Special Ed. Function will move at the end of phase 3 and the space can be used for staging until demolition in Phase 5.*)
- (e) Pool Building and South Gym
- (e) Cafeteria Building

• Function Staging

- Gallery into Phase 1 CTE Staging classrooms and support
- Photo Studio/Art Lab H123 into Phase 1 CTE Staging classrooms
- Special Education in temporary portable on north tennis court
- Occupational Therapist Office into English Building Room E105
- South Gym court in a temporary (tent) structure on Phase 1 surface parking. *Note: Coordinate the temporary tent facility size with District for use in alternate sites and/or phases.*
- South Gym building functions with large floor areas (i.e. Dance Studio) in the Distribution Center staging area; other components in portable temporary facilities at the Phase 1 surface parking and/or west of the Greek stage
- *Note: Per the District and Samohi, the showers and certain locker rooms (TBD) of South Gym are not staged due to the availability of shower and lockers in the North Gym and new pool building.*

• Relocation

- History Building basement storage in the Phase 1&2 Distribution Center staging area

• Construction

- Phase 5 Quad (partial) and accessible entrances to existing Business, Art, Language and English Buildings
- **Building A, Level 1:** Library Department, Special Education Department and one Computer Lab and the Phase 5 Quad
- **Building A, Levels 2 and 3:** one House including House Office, support, 17 general classrooms and one Computer Lab (House from existing Language Building)
- **Building B, Semi-Subterranean, Level 1 and Level 2:** Gold Gym

• Grading

- (e) History building removed; site significantly regraded
- (e) South Gym next to the football field removed; re-graded flat for staging
- Grade between Greek stage and Building B transitions from +/-100' at top of amphitheater, Building B at +/- 85' level, to +/-71' to the west
- Fire lane maintained between Building A and (e) Language Building allows access to Phase 5 quad, transition required adjacent to (e) Language Building
- (e) Business, Art and History buildings tie into the new Phase 5 quad
- Earthwork estimate: -32,000 cy

• Landscape

- Interim Landscape planted with low water use plants and trees to be grown between phases and planted in future phases
- Interim Plaza space for school and student use
- Interim Hardscape and Landscape to connect buildings with (e) campus North and East of Building A
- (n) permanent landscape and hardscape to the West of (N) Library building

- **Parking:** +/- 156 parking spaces will be available during construction. +/- 216 parking spaces will be available after phase completion

- **Notes:** Design for Phase 4 may commence either concurrently with Phase 3, or as appropriate so that construction of Phase 4 may begin directly after Phase 3 construction



-96-

Phase 3 Building A	
Level	Department
2,3	Classrooms & COW
1	Computer Lab
1	Library
1	Special Ed
2	Decentralized Administration
all	M/O
Phase 3 Building B	
Level	Department
1,2,3	Gold Gym

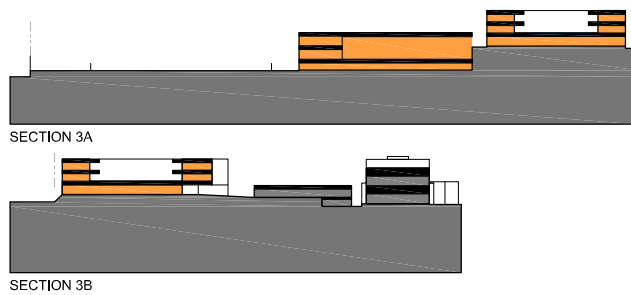
- LEGEND:
- Existing structure to remain
 - New structure (previous phase)
 - Renovation (previous phase)
 - New structure (current phase)
 - Renovation (current phase)
 - New structure below
 - New field
 - Temporary field / structure
 - Demolition of existing structure
 - Approx. construction area (by District)

Phase 3 Site Massing Concept



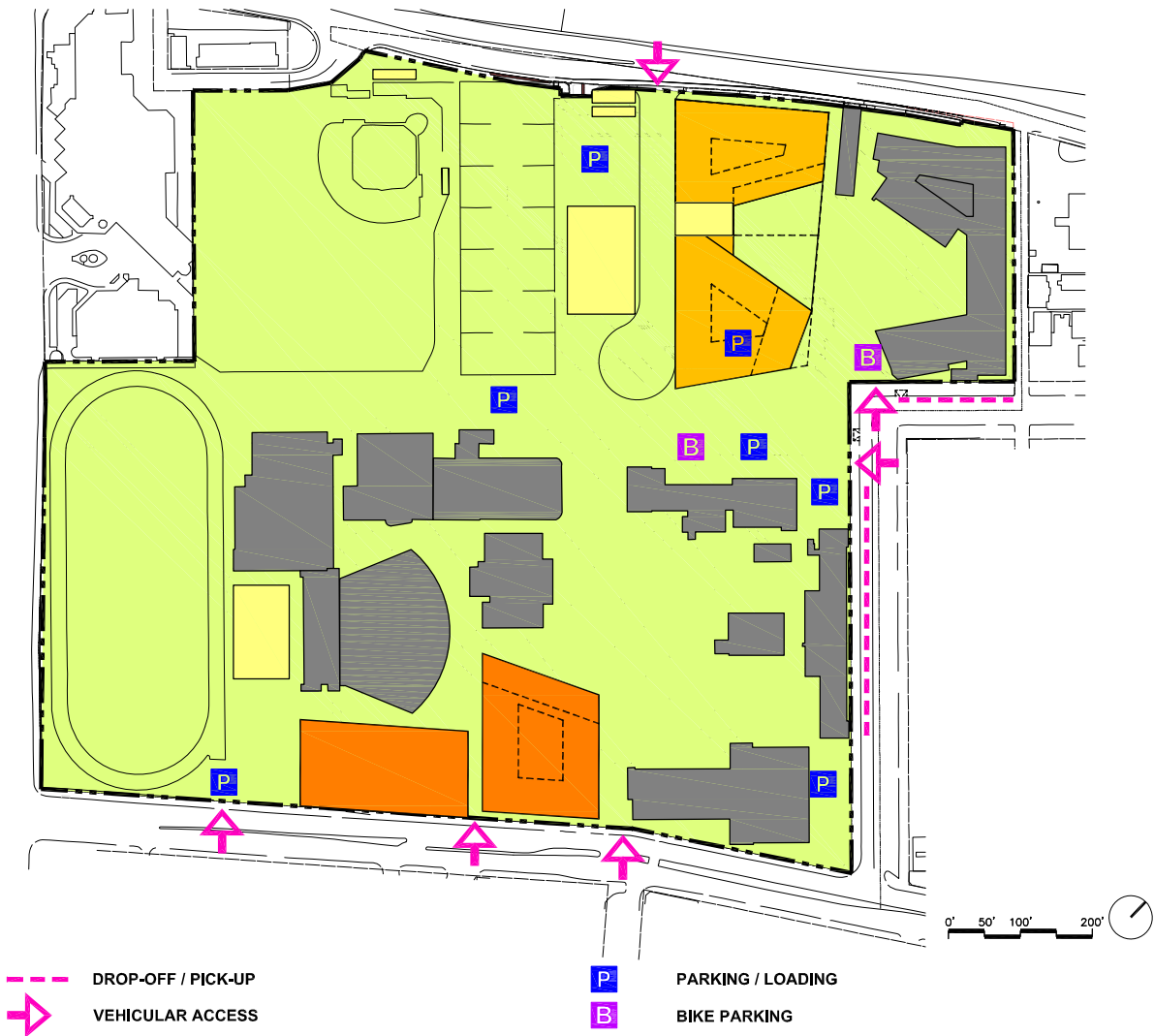
-97-

Phase 3 Landscape Concept



Phase 3 Site Sections

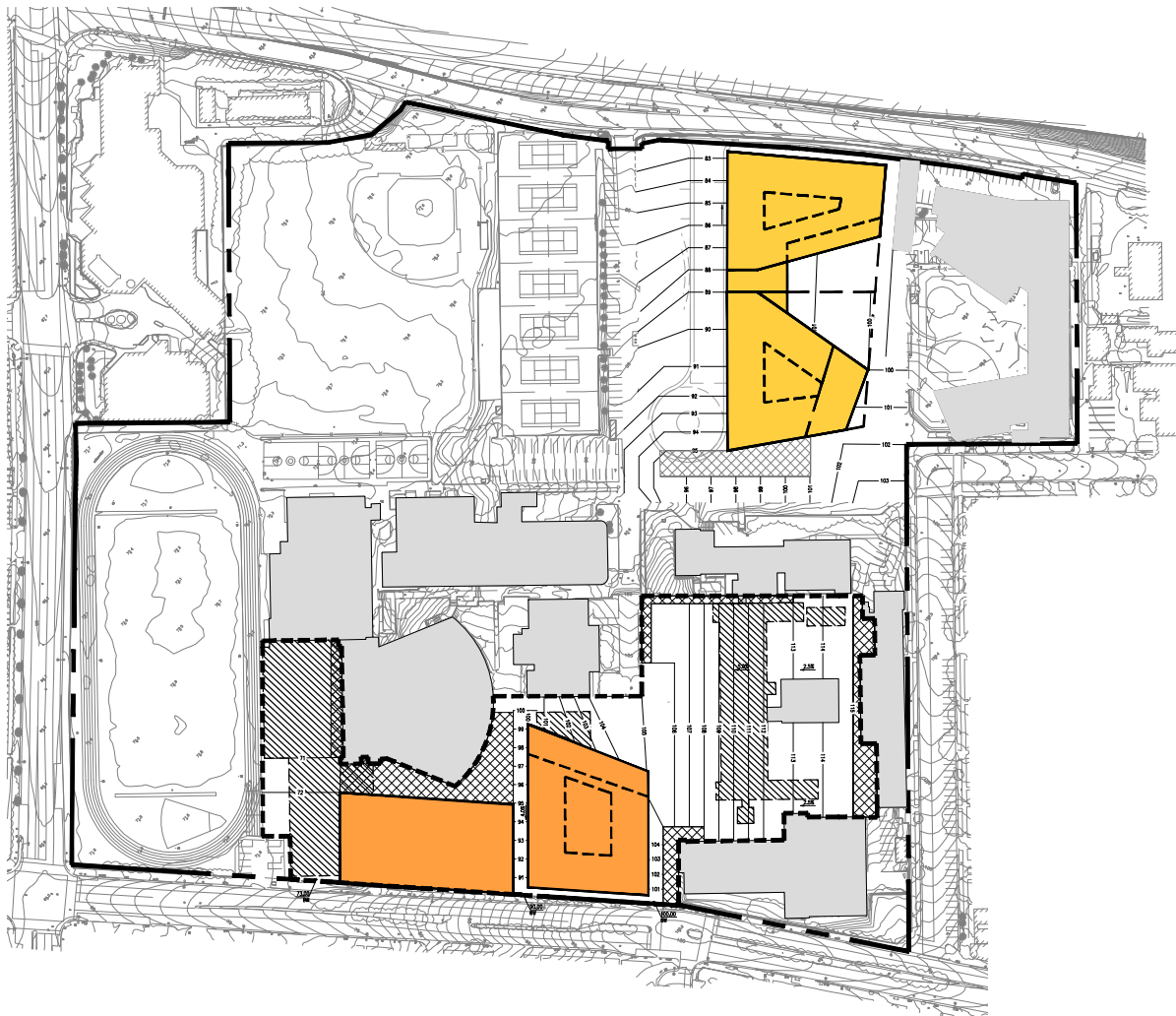
-98-



Phase 3 Vehicular Access and Parking Diagram



Phase 3 Pedestrian Circulation Diagram



-100-

LEGEND:

- Existing structure to remain
- New structure (previous phase)
- Renovation (previous phase)
- New structure (current phase)
- Renovation (current phase)
- New structure below
- New field
- Temporary field / structure
- Demolition of existing structure
- Approx. construction area (by District)
- Area of proposed grade change over 5%

Phase 3 Grading Concept

PHASE 3 BUILDING A: SPACE PROGRAM

Room No.	Component	ASF	No. Spaces	Total	Notes
CLASSROOMS					
N/A	General Classrooms	1,200	13	15,600	
New	ASB Classroom	2,400	1	2,400	
New	Social Skills Classroom	1,200	1	1,200	
New	Social Skills Classroom	1,200	1	1,200	
N/A	COW (Computers on Wheels) / Shared Printer Room	100	3	300	See FSP
Subtotal ASF/DGSF				20,700	
Total GSF				28,566	

COMPUTER LABS / IT					
L202	Computer Lab	1,500	1	1,500	
New	IDF	150	TBD	TBD	See FSP
Subtotal ASF/DGSF				1,500	
Total GSF				2,070	

LIBRARY					
L210	Learning Commons	12000	1	12,000	
L210a	Periodicals (s.f. incl. abv.)			-	
L210a1	Server (s.f. incl. abv.)			-	
L210b	Office (s.f. incl. abv.)			-	
L210c	Office (s.f. incl. abv.)			-	
L210d	Storage (s.f. incl. abv.)			-	
L210e	Conference (s.f. incl. abv.)			-	
L210f	Conference (s.f. incl. abv.)			-	
L208	Classroom (s.f. incl. abv.)			-	
L209	(Future) Classroom (s.f. incl. abv.)			-	Space use for staging
Subtotal ASF/DGSF				12,500	
Total GSF				17,250	

SPECIAL EDUCATION					
New	Special Education: Life Skills / Medically Fragile	1,200	1	1,200	
New	Special Education: Life Skills / Medically Fragile	1,200	1	1,200	
New	Life Skills / Medically Fragile Support	600	1	600	
New	PAES Classroom	1,200	1	1,200	
New	Special Education Support	300	1	300	
Subtotal ASF/DGSF				4,500	
Total GSF				6,210	

DECENTRALIZED ADMINISTRATION - S HOUSE OFFICE					
L200	Reception	110	1	110	
L200b	House Principal Office	272	1	272	

New	House Principals' Storage	75	1	75
New	Conference Room	234	1	234
L200a	Advisor Office #1	130	1	130
L108a	Advisor Office #2	130	1	130
New	Advisor Office #3	130	1	130
L200c	Teacher Leader Office	134	1	134
New	File Room	155	1	155
New	Workroom/Copy	439	1	439
New	House Principal's Restroom	60	1	60
Subtotal ASF/DGSF				2,299
Total GSF				3,172

Room No.	Component	ASF	No. Spaces	Total	Notes
MAINTENANCE AND OPERATIONS					
N/A	Additional Custodial Closets	107	3	321	See FSP
New	Gender Neutral Restroom	85	1	85	
N/A	Additional Staff Restrooms	60	3	180	See FSP
Subtotal ASF/DGSF				586	
Total GSF				808	

MISCELLANEOUS					
	QUADS (outdoor space)		TBD		TBD

PHASE 3A TOTAL					
		ASF/DGSF	GSF	OTHERS	
	CLASSROOMS	20,700	28,566		
	COMPUTER LABS / IT	1,500	2,070		
	LIBRARY	12,500	17,250		
	SPECIAL EDUCATION	4,500	6,210		
	DECENTRALIZED ADMINISTRATION - S HOUSE OFFICE	2,299	3,172		
	MAINTENANCE AND OPERATIONS	586	808		
	MISCELLANEOUS				TBD
TOTAL ASF/DGSF/OTHERS		42,085	58,077	TBD	

-102-

PHASE 3 BUILDING B: SPACE PROGRAM

Room No.	Component	ASF	No. Spaces	Total	Notes
GOLD GYM					
Refer to CCJUP by RLB for space program details					
	Courts with Retractable Bleachers (800 seats)	17,100	1	17,100	
	Fitness Room	1,500	1	1,500	
	Yoga Studio	1,920	1	1,920	
	Pep Squad Studio	5,200	1	5,200	
	Dance Studio with Retractable Bleachers (300 seats)	5,150	1	5,150	
	Multipurpose Room	400	1	400	
	Locker/Shower Room - Boys PE	3,100	1	3,100	
	Locker/Shower Room - Girls PE	3,100	1	3,100	
	Pep Squad Team Locker Room	260	1	260	
	Dance Changing Room - Boys	200	1	200	
	Dance Changing Room - Girls	400	1	400	
	Faculty Locker/Shower Room - Men	200	1	200	
	Faculty Locker/Shower Room - Women	200	1	200	
	Faculty Offices (2)	600	2	1,200	
	Officials Changing Room	70	1	70	
	Equipment Storage	250	1	250	
	Yoga Storage	200	1	200	
	Dance Storage	400	1	400	
	General Storage	500	1	500	
	Public Restroom - Men	280	1	280	
	Public Restroom - Women	280	1	280	
	Concession	180	1	180	
	Ticket Booth	100	1	100	
Subtotal ASF/DGSF				42,190	
Total GSF				54,847	

-103-

PHASE 3B TOTAL			
		ASF/DGSF	GSF
	GOLD GYM	42,190	54,847
	TOTAL ASF/DGSF	42,190	54,847