
ENERGY EXPENDITURE PLAN



Point Dume Marine Science School

Point Dume Elementary School

6955 Fernhill Drive

Malibu, CA 90265

P: (310) 457-9370

PREPARED FOR:

California Energy Commission
Energy Division
Local Assistance and Financing Office, MS-23
1516 Ninth Street
Sacramento, Ca 95814



PREPARED ON:
5/17/2017

Table of Contents

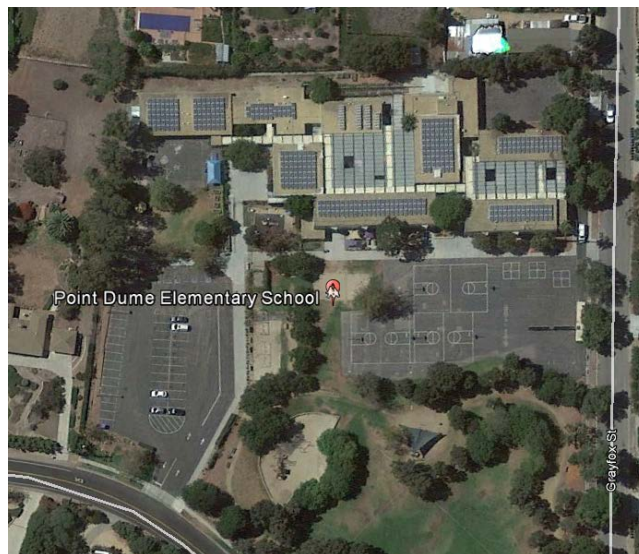
Section 1: Facility Background.....	3
Point Dume Elementary School.....	3
Utility Costs and Rate Schedules	4
Benchmarking.....	5
Section 2: Energy Efficiency Measures (EEM) Summary.....	6
Lighting Systems Retrofit.....	7
Appendix – A.....	8
School Schedules and Maps	8
Daily Bell Schedule and Academic Calendar	9
Point Dume Elementary School Map	11
Appendix – B.....	12
Energy Utilization Analysis	12
Appendix – C	15
Lighting Systems Audit.....	15

Section 1: Facility Background

Point Dume Elementary School

Point Dume Elementary School is located at 6955 Fernhill Drive in Malibu, CA . It is an elementary school serving approximately 195 students ranging from grades K-5 and provides instruction using 10 permanent buildings. The total amount of occupied space is 31,782 SF. For a complete map of the campus, see Appendix A.

The campus operates on an academic calendar that begins in late August and ends in late June. Winter Break is a two week break that begins at the end of December and goes to the first week of January. Spring Break is a one week break that begins in early-April. School is in session beginning at 8:30 a.m. and continuing until 3:40 p.m., Monday through Friday. For a complete academic calendar and bell schedule, refer to Appendix A.



Utility Costs and Rate Schedules

The Point Dume Elementary School facilities receive electricity services from Southern California Edison (SCE) and gas services from SoCalGas (SCG). Monthly utility data is considered separately for each utility meter and each energy type (electricity, natural gas, propane, diesel, and water).

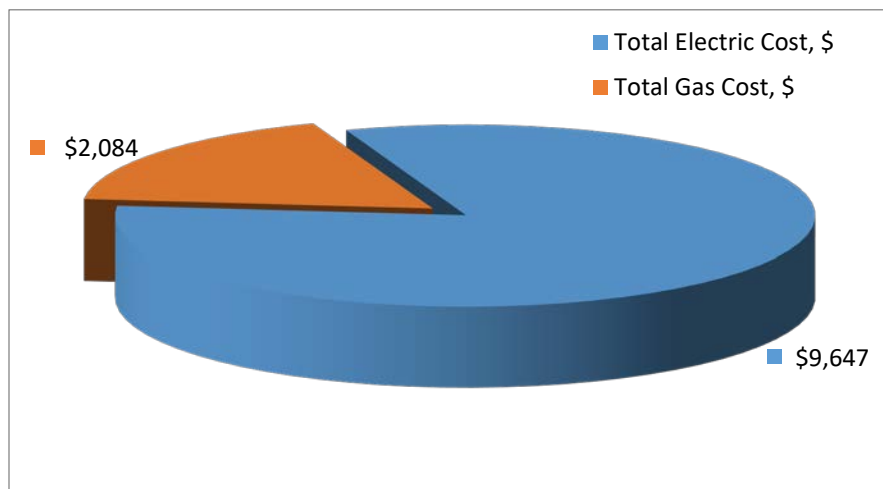
The following is a list of the meters associated with each energy type utilized at Point Dume Elementary School:

Account Number	Meter Number	Rate Schedule
3-013-7857-06	259000-073549	TOU-GS-2-R

Account Number	Meter Number	Rate Schedule
1169047000	12994161	GN-10

Also located on site is a 90.2 kW photovoltaic array, installed in 2013, that produced 134,822 kWh from July, 2015 to June, 2016.

The utility data provided uses the data recovered from each of these meters during the period of July, 2015 to June, 2016. The cost comparison of Point Dume Elementary School’s gas and electricity costs can be seen in the table below:



Benchmarking

As part of the site evaluation we determined the Energy Utilization Analysis (EUA) to provide important information about the energy usage of the school. Listed in the table below is the Benchmarking Report for Point Dume Elementary School:

Energy Use Intensity Calculator					
Electricity		Natural Gas		Other Fuels	
1.57	<i>W/SF</i>	0.07	<i>Therms/SF</i>	0.00	<i>Gals/SF</i>
7.30	<i>kWh/SF</i>	\$ 0.07	<i>Cost/SF</i>	\$ 0.00	<i>Cost/SF</i>
\$ 0.30	<i>Cost/SF</i>				
Energy Costs/SF/Year		\$ 0.37	Energy Use(Kbtu)/SF/Year		85.21

The main purpose of this report is to assess the current energy usage of Point Dume Elementary School. Energy consumption is analyzed compared to the site's actual weather data expressed in Cooling Degree Days (CDD) & Heating Degree Days (HDD). Graphs comparing the energy consumption to the CDD and HDD can be found in Appendix B.

The Baseline Energy Utilization Analysis (EUA) report compiles the monthly energy data from all meters on site. The EUA is useful in identifying critical energy consuming benchmarks like kWh/SF, kBtu/SF, and Cost/SF for each fuel type and individual school site. This report is a great resource to have for identifying the lowest energy performing schools. The report ranking will present the schools that consume the most energy when compared to others within the district or other comparable districts. The considered school is rated at 7.30 kWh/SF/yr.

The baseline EUA summary of all the meters for Point Dume Elementary School can be found in Appendix B.

Section 2: Energy Efficiency Measures (EEM) Summary

Energy savings are based on the difference between annual energy use under existing conditions and annual energy use under proposed conditions. These annual energy savings, and the corresponding annual energy cost savings, are used to determine the cost-effectiveness of the projects. Demand savings are calculated as the different between the electricity demand of the existing equipment and electricity demand of proposed equipment. The table below shows the Energy Efficiency Measures proposed and the corresponding savings associated with them.

EEM Number	Energy Efficiency Measure	Demand Savings (kW)	Electricity Savings (kWH/yr)	Natural Gas or Fuel Savings (therms or gal/yr)	Annual Cost Savings (\$)	Rebates and Grants (\$)	Installed Measure Cost (\$)
Lighting	Lighting – Interior Fixture Retrofit	18	33,074		\$3,274.00	\$43,000.00	\$86,015.00
Lighting	Lighting – Exterior Fixture Retrofit	2	8,749		\$866.00	\$13,000.00	\$26,547.00
Lighting	Lighting – Retrofit Interior Lamps to LED	1	443		\$44.00	\$0.00	\$1,192.00
	Totals	21	42,266		\$4,184.00	\$56,000.00	\$113,754.00

Lighting Systems Retrofit

A significant portion of a facilities electrical costs comes from lighting, making lighting retrofits one of the quickest and simplest methods for reducing utility costs. In most cases the retrofits will result in improved light quality and reduced maintenance costs in addition to the estimated energy savings.

The method used for calculating energy savings is outlined below:

$$\underline{\text{Annual Saving, } \$ = (\text{Existing Watts} - \text{New Watts}) / 1000 \times \text{Hours/Year} \times \text{Utility Rate} \times N}$$

Where,

- Existing Watts* – Wattage rating for the existing (Baseline) light fixture
- New Watts* – New wattage rating for the existing light fixture
- Hours/Year* – Annual number of “burn-hours” (run hours for different areas; see detailed audit in Appendix C)
- Utility Rate* – Actual weighted composite utility rate, \$/kWh
- N* – Number of light fixtures of the particular type (see below & in Appendix C for the actual quantities).

The current interior lighting systems in the Point Dume Elementary School buildings consist of a combination of 1st generation T-8, T-12, compact fluorescent, and incandescent lamps and fixtures. Following examination of the data collected, a full retrofit of the lighting system with LED and 4th generation T-8 lamps and fixtures is recommended.

The current exterior lighting systems in the Point Dume Elementary School buildings consist of compact fluorescent, metal halide, high pressure sodium, and incandescent lamps and fixtures. Following examination of the data collected, a full retrofit of the lighting system with LED lamps and fixtures is recommended.

This retrofit will generate more saving, electrical demand reduction and better payback than other Energy Conservation Measures such as HVAC replacements. Upon installment of the new system, the campus will conserve 21.265 kW and 42,266 kWh per year. The cost savings per year will be approximately \$4,184.33. A full detailed audit of the current lighting system implemented in the entire campus can be found in Appendix C.

Appendix – A

School Schedules and Maps

Daily Bell Schedule and Academic Calendar

POINT DUME MARINE SCIENCE ELEMENTARY SCHOOL

Bell Schedule

2015 – 2016

MONDAY – THURSDAY

8:05	Playground Gates Open
8:15	School Begins: Morning Assembly Line-Up Bell
10:00 – 10:20	K Snack Recess on K playground
10:00 – 10:20	1 st – 5 th Snack Recess on main playground
12:00 – 12:20	K Lunch at K playground
12:20 – 12:40	K Recess on K playground
12:00 – 12:20	1 st -2 nd Lunch
12:20 – 12:40	1 st -2 nd Lunch Recess on main playground
12:00 – 12:20	3 rd -5 th Lunch Recess on main playground
12:20 – 12:40	3 rd -5 th Lunch
1:45	Kindergarten Dismissal
2:45	1 st -5 th Dismissal

FRIDAYS AND ALL MINIMUM DAYS

8:05	Playground Gates Open
8:15	School Begins: Morning Assembly Line-Up Bell
10:00 – 10:15	K Snack Recess on K playground
	1 st – 3 rd Snack Recess on main playground
12:00 – 12:15	K Lunch at K playground
12:15 – 12:30	K Recess on K playground
12:00 – 12:15	1 st -2 nd Lunch
12:15 – 12:30	1 st -2 nd Lunch Recess on main playground
12:00 – 12:15	3 rd -5 th Lunch Recess on main playground
12:15 – 12:30	3 rd -5 th Lunch
12:45	K-5 th Dismissal

NOTE: Rainy Days – All Teachers open classrooms at 8:00 a.m.

SANTA MONICA-MALIBU UNIFIED SCHOOL DISTRICT
2016-2017 District Calendar

Approved by the Board of Education: 3/19/15

July 2016					August 2016					September 2016				
M	T	W	Th	F	M	T	W	Th	F	M	T	W	Th	F
4	5	6	7	8	1	2	3	4	5	5	6	7	8	9
11	12	13	14	15	8	9	10	11	12	12	13	14	15	16
18	19	20	21	22	15	16	17	18	19	19	20	21	22	23
25	26	27	28	29	22	23	24	25	26	26	27	28	29	30

October 2016					November 2016					December 2016				
M	T	W	Th	F	M	T	W	Th	F	M	T	W	Th	F
4	5	6	7	8	1	2	3	4	5	5	6	7	8	9
10	11	12	13	14	7	8	9	10	11	12	13	14	15	16
17	18	19	20	21	14	15	16	17	18	19	20	21	22	23
24	25	26	27	28	21	22	23	24	25	26	27	28	29	30
31					28	29	30							

January 2017					February 2017					March 2017				
M	T	W	Th	F	M	T	W	Th	F	M	T	W	Th	F
2	3	4	5	6	1	2	3	4	5	1	2	3	4	5
10	11	12	13	14	6	7	8	9	10	6	7	8	9	10
15	16	17	18	19	13	14	15	16	17	13	14	15	16	17
23	24	25	26	27	20	21	22	23	24	20	21	22	23	24
30	31				27	28	29	30	31	27	28	29	30	31

April 2017					May 2017					June 2017				
M	T	W	Th	F	M	T	W	Th	F	M	T	W	Th	F
3	4	5	6	7	1	2	3	4	5	5	6	7	8	9
10	11	12	13	14	8	9	10	11	12	12	13	14	15	16
17	18	19	20	21	15	16	17	18	19	19	20	21	22	23
24	25	26	27	28	22	23	24	25	26	26	27	28	29	30
					29	30	31							

- Legend:**
- = First/Last Day of School
 - = Legal Holiday
 - = Local Holiday (schools/offices closed)
 - = School Recess (classes not in session)
 - = Pupil Free Day (no school for students)
 - = Elem. Pupil Free Day (no school -elem students)
 - = Sec. Pupil Free Day (no school -sec students)
 - = Minimum Day for all students
 - = Certificated Staff Development Days

Employee Work Dates:

Sept. 1, 2016-June 30, 2017: * Classified 11-Month
 *must work 22 days in July/August, 2016

Aug. 8, 2016-June 21, 2017: Classified 10+10

Aug. 15, 2016-June 14, 2017: Classified 10-Month

Aug. 17, 2016-June 9, 2017: Certificated/184 Days

Aug. 18, 2016-June 9, 2017: Certif CDS/183 Days

Aug. 19, 2016-June 9, 2017: Classified School Year

Teacher Work Days: 184
Student Days: 180

1st Semester: Aug. 22 - Dec. 23 (84 days)
 2nd Semester: Jan. 10 - June 9 (96 days)



First Day of Instruction:
 - Monday, August 22, 2016

Last Day of Instruction:
 - Friday, June 9, 2017

Certificated Staff Development Days:
 (No Students)
 - Wednesday, August 17, 2016
 - Thursday, August 18, 2016

HOLIDAYS:
 July 4: 4th of July Holiday
 Sept. 5: Labor Day Holiday
 Oct 3: Local Holiday
 Oct 12: Local Holiday
 Nov. 11: Veteran's Day Holiday
 Nov. 24: Thanksgiving Holiday
 Nov. 25: Legal Holiday (Admission's Day observed)
 Dec. 26, 27: Winter Holidays
 Dec. 30, Jan 2: New Years Holidays
 Jan 16: Martin Luther King Jr. Holiday
 Feb. 20: Presidents' Day Holiday
 Apr. 7: Local Holiday
 Apr. 14: Legal Holiday (Lincoln's Birthday observed)
 May 29: Memorial Day Holiday

SCHOOL RECESSES:
 Dec. 26 - Jan 6: Winter Recess
 Apr 3 - Apr 14: Spring Recess

PUPIL-FREE DAYS:
 Aug. 17: All Students
 Aug. 18: All Students
 Aug. 19: All Students
 Nov. 4: Elementary Students Only
 Jan. 9: Secondary Students Only

MINIMUM DAYS:
 TK/Kindergarten: Aug. 22, Aug. 23, 30, Nov. 7, 8, 9, 10, 23, Dec. 23, May 25, June 9
 Elementary: Aug. 22, 30, Sept. 6, Nov. 7, 8, 9, 10, 23, Dec. 23, May 25, June 9
 Santa Monica Middle Schools: Sept. 8, Nov. 23, Dec. 23, Mar. 31, Apr. 27, June 8, June 9, +1 discretionary
 Malibu MS/HS: Sept. 8, 15, Nov. 23, Dec. 21, 22, 23, March 9, June 6, 7, 8 + 1 discretionary
 Samohi: Sept. 15, Dec. 20, 21, 22, 23, Mar. 9, June 5, 6, 7, 8
 Olympic HS: Sept. 20, Nov. 23, Dec. 23, May 2, June 1, 2, 5, 6, 7, 8, 9

Back to School Nights:
 Tues. Aug. 30 - Elem TK-2
 Tues. Sept. 6 - Elem 3-5
 Thurs. Sept. 8 - Middle School
 Thurs. Sept. 15 - High School
 Tues. Sept. 20 - Olympic HS

Open House Nights:
 Thurs. May 25 - Elementary
 Thurs. April 27 - SM Middle Schools
 Thurs. March 9 - Malibu MS/HS and Samohi
 Tues. May 2 - Olympic HS

Promotions/Graduations:
 Wed. June 7 - Elementary
 Fri. June 9 - Middle School
 Thurs. June 8 - MMS 2:00 pm
 Thurs. June 8 - Samohi 5:30 pm
 Wed. May 31 - Olympic HS 5:30 pm

Parent Conference Days (TK-5):
 Nov. 4 - Nov. 10, 2016

Testing Dates: *expected, not confirmed*
 AP Testing: May 1- May 12, 2017
 STAR: April 20 - May 18, 2017
 SBAC: April 20 - May 29, 2017

TK/Kindergarten Roundup:
 Jan. 30 - Feb. 10, 2017

Final Exams:
 Malibu MS/HS: Dec. 21-23, 2016
 June 6-8, 2017
 Samohi: Dec. 20-23, 2016
 June 5-8, 2017

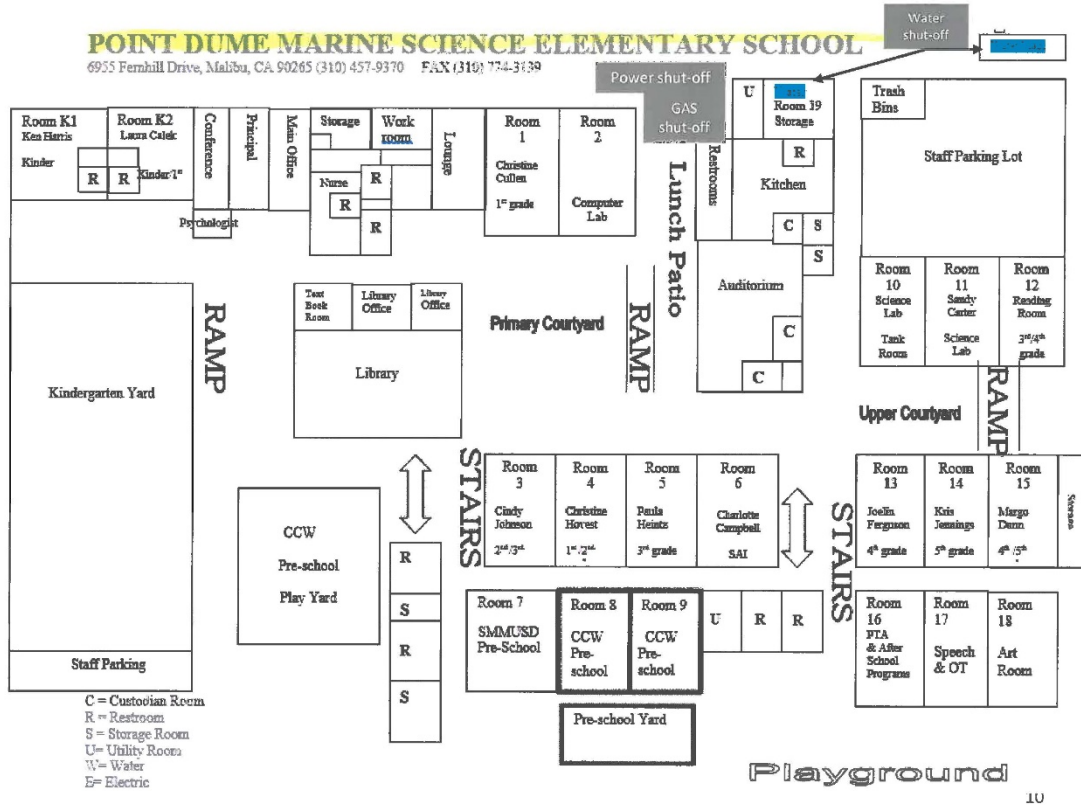
Summer School:
 ISS: June 19-July 14, 2017
 Credit Recovery: June 19-Jul 21, 2017
 ESY: June 19-July 14, 2017

TK-5 Grading Periods:
 Conference: Nov. 4, 2016
 Winter Grading: Feb. 10, 2017
 Spring Grading: June 9, 2017

6-12 Grading Periods:
 Aug. 22 - Sept. 30, 2016
 Oct. 4 - Nov. 10, 2016
 Nov. 14 - Dec. 23, 2016
 Jan. 9 - Feb. 24, 2017
 Feb. 27 - April 28, 2017
 May 1 - June 9, 2017

Revised 3/5/15

Point Dume Elementary School Map



Appendix – B

Energy Utilization Analysis

Customer Name: **Santa Monica-Malibu USD**

Facility Name: **Point Dume Elementary**

Elec Utility Name: **SCE**

Natural Gas Utility Name: **SCG**

Facility Location: **6955 Fernhill Drive, Malibu, CA**

Sq. Ft. (conditioned space): **31,782**

Billing Period

FROM: **Jul-15**

TO: **Jun-16**

Account #	Meter #	Rate Schedule	Account #	Meter #	Rate Schedule
2-31-667-0801	259000-073549	TOU-GS-2-R	6307342052	12994161	GN-10-NON-RESIDENTIAL
0	0	0	0	0	0
0	0	0	0	0	0
0	0	0	0	0	0

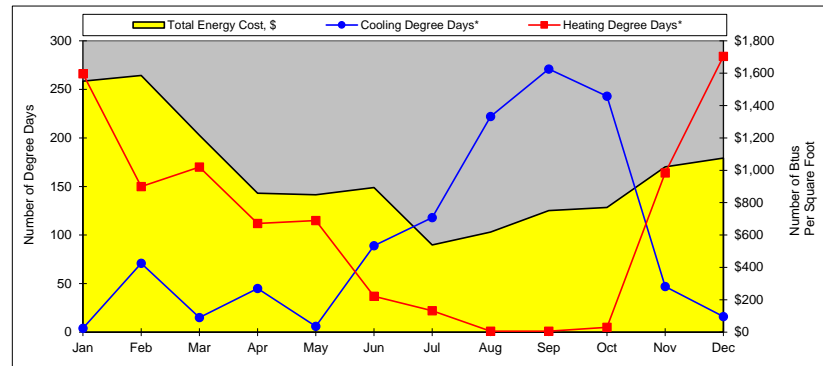
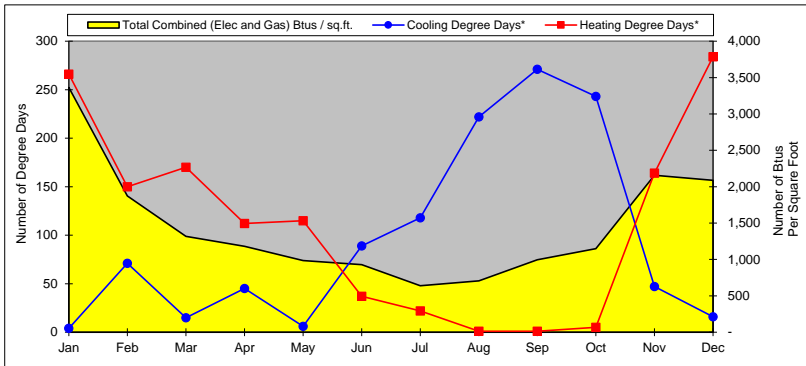
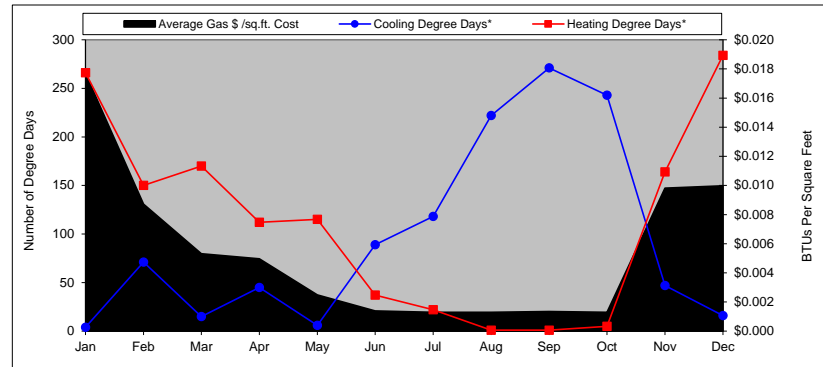
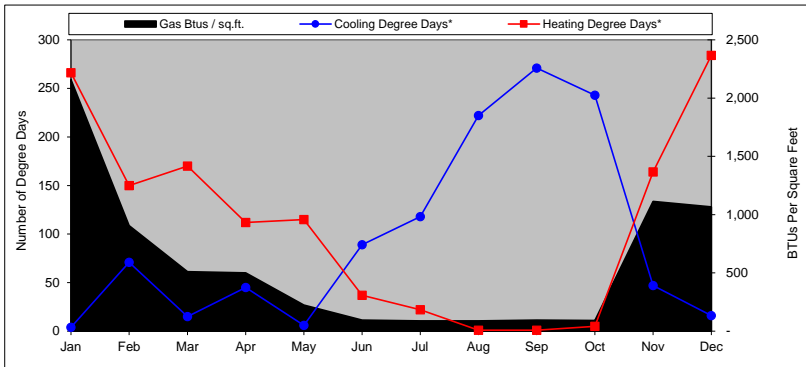
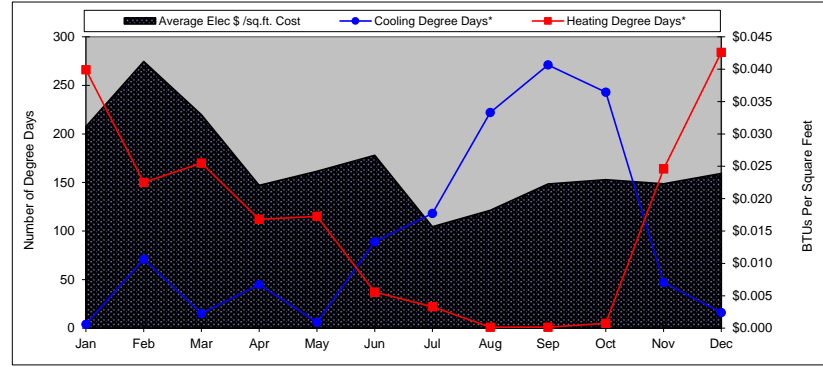
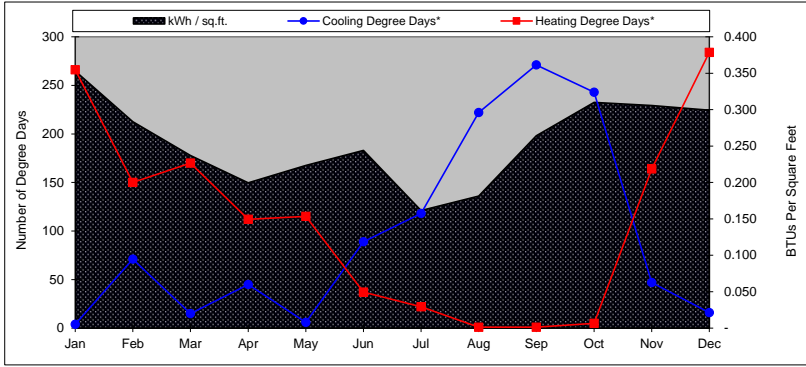
	Jan	Feb	Mar	Apr	May	Jun	Jul	Aug	Sep	Oct	Nov	Dec	TOTAL ANNUAL (Purchased from SCE)	TOTAL ANNUAL (Purchased from SCE and Solar Production)
Cooling Degree Days*	4	71	15	45	6	89	118	222	271	243	47	16	1,147	
Heating Degree Days*	266	150	170	112	115	37	22	1	1	5	164	284	1,327	
Days in Billing Period														
electric	33	30	29	32	29	30	30	31	30	30	31	30	365	
natural gas	30	28	31	28	31	32	29	29	30	28	34	33	363	
Electric Usage														
kWh per Billing Cycle	11,218	9,009	7,532	6,344	7,096	7,755	5,135	5,763	8,398	9,848	9,717	9,511	97,326	232,148
\$ for kWh Billed	\$0	\$0	\$0	\$0	\$0	\$0	\$0	\$0	\$0	\$0	\$0	\$0	\$0	\$0
Max kW Billed	70	53	51	42	48	54	30	38	51	53	51	56	50	50
\$ for kW Billed	\$989	\$1,309	\$1,048	\$701	\$770	\$849	\$498	\$578	\$708	\$729	\$709	\$759	\$9,647	\$9,647
Total Electric Cost, \$	\$989	\$1,309	\$1,048	\$701	\$770	\$849	\$498	\$578	\$708	\$729	\$709	\$759	\$9,647	\$9,647
Ave. Daily Electric Cost, \$	\$30	\$44	\$36	\$22	\$27	\$28	\$17	\$19	\$24	\$24	\$23	\$25	\$	\$
Average \$/kWh Cost	\$0.088	\$0.145	\$0.139	\$0.110	\$0.109	\$0.109	\$0.097	\$0.100	\$0.084	\$0.074	\$0.073	\$0.080	\$	\$
Average Elec \$ /sq.ft. Cost	\$0.031	\$0.041	\$0.033	\$0.022	\$0.024	\$0.027	\$0.016	\$0.018	\$0.022	\$0.023	\$0.022	\$0.024	\$	\$
kWh / sq.ft.	0.353	0.283	0.237	0.200	0.223	0.244	0.162	0.181	0.264	0.310	0.306	0.299	3.06	7.30
Natural Gas Usage														
Therms per Billing Cycle	686	288	162	159	71	30	28	28	30	29	354	339	2,204	
Total Gas Cost, \$	\$562	\$277	\$169	\$158	\$79	\$44	\$41	\$41	\$43	\$41	\$312	\$317	\$	\$
Ave. Daily Gas Cost, \$	\$19	\$10	\$5	\$6	\$3	\$1	\$1	\$1	\$1	\$1	\$9	\$10	\$	\$
Average \$/therm Cost	\$0.819	\$0.962	\$1.043	\$0.994	\$1.113	\$1.467	\$1.464	\$1.464	\$1.433	\$1.414	\$0.881	\$0.935	\$	\$
Average Gas \$ /sq.ft. Cost	\$0.018	\$0.009	\$0.005	\$0.005	\$0.002	\$0.001	\$0.001	\$0.001	\$0.001	\$0.001	\$0.010	\$0.010	\$	\$
Gas Btus / sq.ft.	2,158	906	510	500	223	94	88	88	94	91	1,114	1,067	6,935	
Total Energy Usage														
ombined (Elec and Gas) Btus / sq.ft.	3,363	1,874	1,319	1,182	985	927	640	707	996	1,149	2,157	2,088	17,386	
Total Energy Cost, \$	\$1,551	\$1,586	\$1,217	\$859	\$849	\$893	\$539	\$619	\$751	\$770	\$1,021	\$1,076	\$11,731	
Ave. Energy \$/sq.ft./period	\$0.05	\$0.05	\$0.04	\$0.03	\$0.03	\$0.03	\$0.02	\$0.02	\$0.02	\$0.02	\$0.03	\$0.03	\$0.37	

* Notes:

- 1) Heating degree days and cooling degree days are based on 65 F.
- 2) Heating degree days and cooling degree days are based on Santa Monica weather data.

Customer: Santa Monica-Malibu USD
Building: Point Dume Elementary

Energy Used from: Jul-15
to: Jun-16



Appendix – C

Lighting Systems Audit



School District Santa Monica-Malibu USD - LED Option
 Address: 0
 0
 School: POINT DUME ELEMENTARY
 School Address 6955 FER HILL DRIVE MALIBU
 0

cost per kwh 0.099

LED Option

46.64 25.38 91,763.36 49,497.37 42,265.99 \$ 4,184.33

ORIGINAL AUDIT ID#	INTERIOR/E	SCHOOL DISTRICT	SCHOOL	ROOM	LIGHTING CODE (EXISTING)	ECM	PROPOSED FIXT QTY	EXIST WATT	PROP WATT	EXIST OPER HRS	PROP OPER HRS	EXISTING KW	PROPOSED KW	EXISTING KWH	PROPOSED KWH	SAVED KWH	ANN SAVINGS
2568	INTERIOR	NTA MONICA-MALIBU U	POINT DUME ELEMENTARY 6955 F	ADMINISTRATION	T8-4-32W-4L-EB/ISN-X-X	(LED)4L 12T8/4F/850/DIR, 97740 (1) QHE4X32UNV/ISN	10	112	64	2185	2185	1.12	0.64	2447.2	1398.4	1048.8	\$ 103.83
2569	INTERIOR	NTA MONICA-MALIBU U	POINT DUME ELEMENTARY 6955 F	ADMINISTRATION	T12-4-34RW-2L-MB/IS-X-X	(LED)2L 12T8/4F/850/DIR, 97740 (1) QHE2X32UNV/ISN	2	72	32	2185	2185	0.144	0.064	314.64	139.84	174.8	\$ 17.31
2570	INTERIOR	NTA MONICA-MALIBU U	POINT DUME ELEMENTARY 6955 F	ADMINISTRATION	T8-4-32W-2L-EB/ISN-X-X	(LED)2L 12T8/4F/850/DIR, 97740 (1) QHE2X32UNV/ISN	12	59	32	2185	2185	0.708	0.384	1546.98	839.04	707.94	\$ 70.09
2571	INTERIOR	NTA MONICA-MALIBU U	POINT DUME ELEMENTARY 6955 F	ADMINISTRATION	T8-4-32W-2L-EB/ISN-X-X	(LED)2L 12T8/4F/850/DIR, 97740 (1) QHE2X32UNV/ISN	2	59	32	2185	2185	0.118	0.064	257.83	139.84	117.99	\$ 11.68
2572	INTERIOR	NTA MONICA-MALIBU U	POINT DUME ELEMENTARY 6955 F	ADMINISTRATION	T8-4-32W-1L-EB/ISN-X-X	(LED)1L 12T8/4F/850/DIR, 97740 (1) QHE2X32UNV/ISN	2	31	16	2185	2185	0.062	0.032	135.47	69.92	65.55	\$ 6.49
2573	INTERIOR	NTA MONICA-MALIBU U	POINT DUME ELEMENTARY 6955 F	ADMINISTRATION	T8-2-17W-4L-EB/ISN-X-X	(LED)4L 8T8/2F/840/DIR, 97743 (1) QHE4X32UNV/ISN	1	61	42	2185	2185	0.061	0.042	133.285	91.77	41.515	\$ 4.11
2574	INTERIOR	NTA MONICA-MALIBU U	POINT DUME ELEMENTARY 6955 F	ADMINISTRATION	CF/S-TWST-13W-1L-SELF-X-X	(LED)1L A19 9W 5000K E26, 455600	2	13	8	2185	2185	0.026	0.016	56.81	34.96	21.85	\$ 2.16
2575	INTERIOR	NTA MONICA-MALIBU U	POINT DUME ELEMENTARY 6955 F	ADMIN RESTROOMS	T8-4-32W-2L-EB/ISN-X-X	(LED)2L 12T8/4F/850/DIR, 97740 (1) QHE2X32UNV/ISN	2	59	32	2185	2185	0.118	0.064	257.83	139.84	117.99	\$ 11.68
2576	INTERIOR	NTA MONICA-MALIBU U	POINT DUME ELEMENTARY 6955 F	ADMIN RESTROOMS	T8-4-32W-1L-EB/ISN-X-X	(LED)1L 12T8/4F/850/DIR, 97740 (1) QHE2X32UNV/ISN	3	31	16	2185	2185	0.093	0.048	203.205	104.88	98.325	\$ 9.73
2577	INTERIOR	NTA MONICA-MALIBU U	POINT DUME ELEMENTARY 6955 F	ADMIN RESTROOMS	CF/S-TWST-13W-1L-SELF-X-X	(LED)1L A19 9W 5000K E26, 455600	4	13	8	2185	2185	0.052	0.032	113.62	69.92	43.7	\$ 4.33
2578	INTERIOR	NTA MONICA-MALIBU U	POINT DUME ELEMENTARY 6955 F	LOUNGE	T8-4-32W-2L-EB/ISN-X-X	(LED)2L 12T8/4F/850/DIR, 97740 (1) QHE2X32UNV/ISN	6	59	32	1816	1816	0.354	0.192	642.864	348.672	294.192	\$ 29.13
2579	INTERIOR	NTA MONICA-MALIBU U	POINT DUME ELEMENTARY 6955 F	LITERACY	T8-4-32W-4L-EB/ISN-X-X	(LED)4L 12T8/4F/850/DIR, 97740 (1) QHE4X32UNV/ISN	6	112	64	1816	1816	0.672	0.384	1220.352	697.344	523.008	\$ 51.78
2580	INTERIOR	NTA MONICA-MALIBU U	POINT DUME ELEMENTARY 6955 F	LITERACY	T8-4-32W-2L-EB/ISN-X-X	(LED)2L 12T8/4F/850/DIR, 97740 (1) QHE2X32UNV/ISN	1	59	32	1816	1816	0.059	0.032	107.144	58.112	49.032	\$ 4.85
2581	INTERIOR	NTA MONICA-MALIBU U	POINT DUME ELEMENTARY 6955 F	LITERACY	T8-2-17W-4L-EB/ISN-X-X	(LED)4L 8T8/2F/840/DIR, 97743 (1) QHE4X32UNV/ISN	1	61	42	1816	1816	0.061	0.042	110.776	76.272	34.504	\$ 3.42
2582	INTERIOR	NTA MONICA-MALIBU U	POINT DUME ELEMENTARY 6955 F		T8-4-32W-4L-EB/ISN-X-X	(LED)4L 12T8/4F/850/DIR, 97740 (1) QHE4X32UNV/ISN	9	112	64	1816	1816	1.008	0.576	1830.528	1046.016	784.512	\$ 77.67
2583	INTERIOR	NTA MONICA-MALIBU U	POINT DUME ELEMENTARY 6955 F		T8-4-32W-4L-EB/ISN-X-X	(LED)4L 12T8/4F/850/DIR, 97740 (1) QHE4X32UNV/ISN	9	112	64	1816	1816	1.008	0.576	1830.528	1046.016	784.512	\$ 77.67
2584	INTERIOR	NTA MONICA-MALIBU U	POINT DUME ELEMENTARY 6955 F		T8-4-32W-2L-EB/ISN-X-X	(LED)2L 12T8/4F/850/DIR, 97740 (1) QHE2X32UNV/ISN	2	59	32	1816	1816	0.118	0.064	214.288	116.224	98.064	\$ 9.71
2585	INTERIOR	NTA MONICA-MALIBU U	POINT DUME ELEMENTARY 6955 F		T8-4-32W-2L-EB/ISN-X-X	(LED)2L 12T8/4F/850/DIR, 97740 (1) QHE2X32UNV/ISN	2	59	32	1816	1816	0.118	0.064	214.288	116.224	98.064	\$ 9.71
2586	INTERIOR	NTA MONICA-MALIBU U	POINT DUME ELEMENTARY 6955 F	RESTROOMS	T8-4-32W-2L-EB/ISN-X-X	(LED)2L 12T8/4F/850/DIR, 97740 (1) QHE2X32UNV/ISN	12	59	32	1816	1816	0.708	0.384	1285.728	697.344	588.384	\$ 58.25
2587	INTERIOR	NTA MONICA-MALIBU U	POINT DUME ELEMENTARY 6955 F	MULTI PURPOSE	T8-4-32W-6L-EB/ISN-X-X	(LED)6L 12T8/4F/850/DIR, 97740 (2) QHE3X32UNV/ISN	16	174	96	1886	1886	2.784	1.536	5250.624	2896.896	2353.728	\$ 233.02
2588	INTERIOR	NTA MONICA-MALIBU U	POINT DUME ELEMENTARY 6955 F	MULTI PURPOSE	CF/4P-DOUB-26W-2L-EB-X-X	(LED)2L 18.5W 4 PIN LED19GX24q-H/840 HORIZONTA	2	51	37	1886	1886	0.102	0.074	192.372	139.564	52.808	\$ 5.23
2589	INTERIOR	NTA MONICA-MALIBU U	POINT DUME ELEMENTARY 6955 F	MULTI PURPOSE	T8-4-32W-2L-EB/ISN-X-X	(LED)2L 12T8/4F/850/DIR, 97740 (1) QHE2X32UNV/ISN	7	59	32	1886	1886	0.413	0.224	778.918	422.464	356.454	\$ 35.29
2590	INTERIOR	NTA MONICA-MALIBU U	POINT DUME ELEMENTARY 6955 F	MULTI PURPOSE CHAIR	I/S-A19-60W-1L-NONE-X-X	(LED) 1L GREEN CREATIVE A19 9W E26 4000K 850 LM	4	60	40	400	400	0.24	0.036	96	14.4	81.6	\$ 8.08
2591	INTERIOR	NTA MONICA-MALIBU U	POINT DUME ELEMENTARY 6955 F	MULTI PURPOSE CHAIR	H/S-R38-75W-1L-NONE-X-X	(LED)1L GREEN CREATIVE 17PAR38G4/930FL40/277V	1	75	40	400	400	0.075	0.017	30	6.8	23.2	\$ 2.30
2592	INTERIOR	NTA MONICA-MALIBU U	POINT DUME ELEMENTARY 6955 F	KITCHEN	T8-4-32W-2L-EB/ISN-X-X	(LED)2L 12T8/4F/850/DIR, 97740 (1) QHE2X32UNV/ISN	17	59	32	1696	1696	1.003	0.544	1701.088	922.624	778.464	\$ 77.07
2593	INTERIOR	NTA MONICA-MALIBU U	POINT DUME ELEMENTARY 6955 F	KITCHEN	T12-4-34RW-2L-MB/IS-X-X	(LED)2L 12T8/4F/850/DIR, 97740 (1) QHE2X32UNV/ISN	5	72	32	1696	1696	0.36	0.16	610.56	271.36	339.2	\$ 33.58
2594	INTERIOR	NTA MONICA-MALIBU U	POINT DUME ELEMENTARY 6955 F	KITCHEN	I/S-A19-60W-1L-NONE-X-X	(LED) 1L GREEN CREATIVE A19 9W E26 4000K 850 LM	3	60	32	1696	1696	0.18	0.027	305.28	45.792	259.488	\$ 25.69
2595	INTERIOR	NTA MONICA-MALIBU U	POINT DUME ELEMENTARY 6955 F	KITCHEN	CF/S-TWST-23W-1L-SELF-X-X	(LED)1L A19 14W 5000K E26, 455717	3	23	14	1696	1696	0.069	0.042	117.024	71.232	45.792	\$ 4.53
2596	INTERIOR	NTA MONICA-MALIBU U	POINT DUME ELEMENTARY 6955 F	KITCHEN	CF/S-TWST-23W-1L-SELF-X-X	(LED)1L GREEN CREATIVE 12A19G4DIM/840 (16177) I	1	23	12	1696	1696	0.023	0.012	39.008	20.352	18.656	\$ 1.85
2597	INTERIOR	NTA MONICA-MALIBU U	POINT DUME ELEMENTARY 6955 F	LIBRARY	T8-4-32W-6L-EB/ISN-X-X	(LED)6L 12T8/4F/850/DIR, 97740 (2) QHE3X32UNV/ISN	25	174	96	1816	1816	4.35	2.4	7899.6	4358.4	3541.2	\$ 350.58
2598	INTERIOR	NTA MONICA-MALIBU U	POINT DUME ELEMENTARY 6955 F	LIBRARY	T8-4-32W-4L-EB/ISN-X-X	(LED)4L 12T8/4F/850/DIR, 97740 (1) QHE4X32UNV/ISN	3	112	64	1816	1816	0.336	0.192	610.176	348.672	261.504	\$ 25.89
2599	INTERIOR	NTA MONICA-MALIBU U	POINT DUME ELEMENTARY 6955 F	LIBRARY	T8-4-32W-2L-EB/ISN-X-X	(LED)2L 12T8/4F/850/DIR, 97740 (1) QHE2X32UNV/ISN	1	59	32	1816	1816	0.059	0.032	107.144	58.112	49.032	\$ 4.85
2600	INTERIOR	NTA MONICA-MALIBU U	POINT DUME ELEMENTARY 6955 F	LIBRARY	T8-4-32W-4L-EB/ISN-X-X	(LED)4L 12T8/4F/850/DIR, 97740 (1) QHE4X32UNV/ISN	2	112	64	1816	1816	0.224	0.128	406.784	232.448	174.336	\$ 17.26
2601	INTERIOR	NTA MONICA-MALIBU U	POINT DUME ELEMENTARY 6955 F		T8-4-32W-4L-EB/ISN-X-X	(LED)4L 12T8/4F/850/DIR, 97740 (1) QHE4X32UNV/ISN	9	112	64	1816	1816	1.008	0.576	1830.528	1046.016	784.512	\$ 77.67
2602	INTERIOR	NTA MONICA-MALIBU U	POINT DUME ELEMENTARY 6955 F		T8-4-32W-2L-EB/ISN-X-X	(LED)2L 12T8/4F/850/DIR, 97740 (1) QHE2X32UNV/ISN	2	59	32	1816	1816	0.118	0.064	214.288	116.224	98.064	\$ 9.71
2603	INTERIOR	NTA MONICA-MALIBU U	POINT DUME ELEMENTARY 6955 F		T8-4-32W-4L-EB/ISN-X-X	(LED)4L 12T8/4F/850/DIR, 97740 (1) QHE4X32UNV/ISN	9	112	64	1816	1816	1.008	0.576	1830.528	1046.016	784.512	\$ 77.67
2604	INTERIOR	NTA MONICA-MALIBU U	POINT DUME ELEMENTARY 6955 F		T8-4-32W-2L-EB/ISN-X-X	(LED)2L 12T8/4F/850/DIR, 97740 (1) QHE2X32UNV/ISN	2	59	32	1816	1816	0.118	0.064	214.288	116.224	98.064	\$ 9.71
2605	INTERIOR	NTA MONICA-MALIBU U	POINT DUME ELEMENTARY 6955 F		T8-4-32W-4L-EB/ISN-X-X	(LED)4L 12T8/4F/850/DIR, 97740 (1) QHE4X32UNV/ISN	9	112	64	1816	1816	1.008	0.576	1830.528	1046.016	784.512	\$ 77.67
2606	INTERIOR	NTA MONICA-MALIBU U	POINT DUME ELEMENTARY 6955 F		T8-4-32W-2L-EB/ISN-X-X	(LED)2L 12T8/4F/850/DIR, 97740 (1) QHE2X32UNV/ISN	2	59	32	1816	1816	0.118	0.064	214.288	116.224	98.064	\$ 9.71
2607	INTERIOR	NTA MONICA-MALIBU U	POINT DUME ELEMENTARY 6955 F		T8-4-32W-4L-EB/ISN-X-X	(LED)4L 12T8/4F/850/DIR, 97740 (1) QHE4X32UNV/ISN	9	112	64	1816	1816	1.008	0.576	1830.528	1046.016	784.512	\$ 77.67
2608	INTERIOR	NTA MONICA-MALIBU U	POINT DUME ELEMENTARY 6955 F		T8-4-32W-2L-EB/ISN-X-X	(LED)2L 12T8/4F/850/DIR, 97740 (1) QHE2X32UNV/ISN	2	59	32	1816	1816	0.118	0.064	214.288	116.224	98.064	\$ 9.71
2609	INTERIOR	NTA MONICA-MALIBU U	POINT DUME ELEMENTARY 6955 F		T8-4-32W-4L-EB/ISN-X-X	(LED)4L 12T8/4F/850/DIR, 97740 (1) QHE4X32UNV/ISN	9	112	64	1816	1816	1.008	0.576	1830.528	1046.016	784.512	\$ 77.67
2610	INTERIOR	NTA MONICA-MALIBU U	POINT DUME ELEMENTARY 6955 F		T8-4-32W-2L-EB/ISN-X-X	(LED)2L 12T8/4F/850/DIR, 97740 (1) QHE2X32UNV/ISN	2	59	32	1816	1816	0.118	0.064	214.288	116.224	98.064	\$ 9.71
2611	INTERIOR	NTA MONICA-MALIBU U	POINT DUME ELEMENTARY 6955 F		T8-4-32W-4L-EB/ISN-X-X	(LED)4L 12T8/4F/850/DIR, 97740 (1) QHE4X32UNV/ISN	9	112	64	1816	1816	1.008	0.576	1830.528	1046.016	784.512	\$ 77.67
2612	INTERIOR	NTA MONICA-MALIBU U	POINT DUME ELEMENTARY 6955 F		T8-4-32W-2L-EB/ISN-X-X	(LED)2L 12T8/4F/850/DIR, 97740 (1) QHE2X32UNV/ISN	2	59	32	1816	1816	0.118	0.064	214.288	116.224	98.064	\$ 9.71
2613	INTERIOR	NTA MONICA-MALIBU U	POINT DUME ELEMENTARY 6955 F		T8-4-32W-4L-EB/ISN-X-X	(LED)4L 12T8/4F/850/DIR, 97740 (1) QHE4X32UNV/ISN	12	112	64	1816	1816	1.008	0.576	1830.528	1046.016	784.512	\$ 77.67
2614	INTERIOR	NTA MONICA-MALIBU U	POINT DUME ELEMENTARY 6955 F		T8-4-32W-2L-EB/ISN-X-X	(LED)2L 12T8/4F/850/DIR, 97740 (1) QHE2X32UNV/ISN	2	59	32	1816	1816	0.118	0.064	214.288	116.224	98.064	\$ 9.71
2615	INTERIOR	NTA MONICA-MALIBU U	POINT DUME ELEMENTARY 6955 F	STORAGE NEXT TO 15	I/S-A19-60W-1L-NONE-X-X	(LED) 1L GREEN CREATIVE A19 9W E26 4000K 850 LM	1	60	40	400	400	0.06	0.009	24	3.6	20.4	\$ 2.02
2616	INTERIOR	NTA MONICA-MALIBU U	POINT DUME ELEMENTARY 6955 F		T8-4-32W-4L-EB/ISN-X-X	(LED)4L 12T8/4F/850/DIR, 97740 (1) QHE4X32UNV/ISN	9	112	64	1816	1816	1.008</					