
ENERGY EXPENDITURE PLAN



District Office

1651 16th Street

Santa Monica, CA 90404

P: (310) 450-8338

PREPARED FOR:

California Energy Commission

Energy Division

Local Assistance and Financing Office, MS-23

1516 Ninth Street

Sacramento, Ca 95814



PREPARED ON:
5/16/2017

Table of Contents

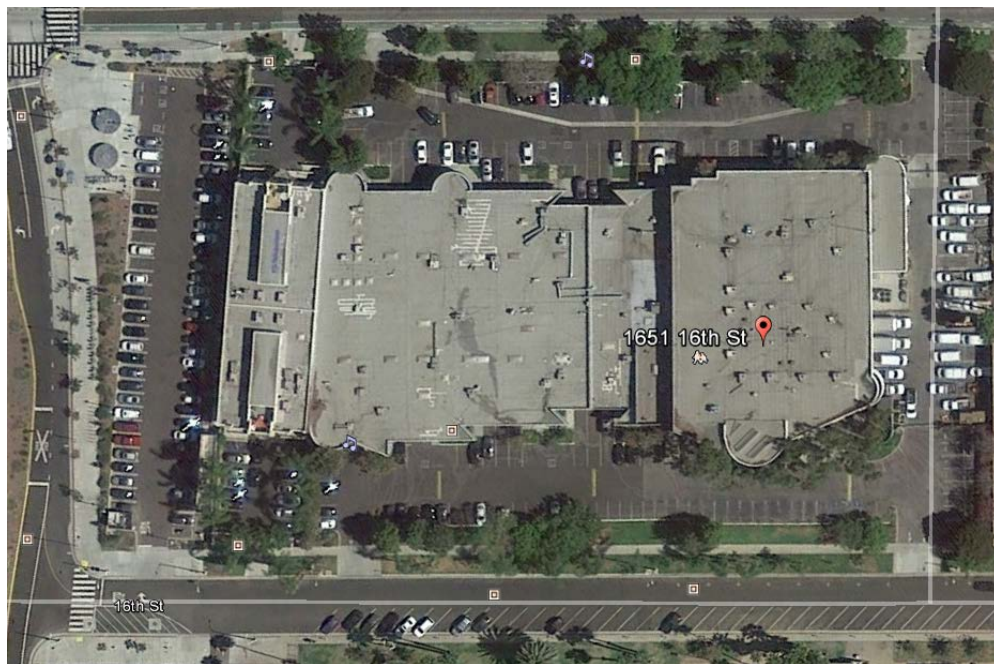
Section 1: Facility Background.....	3
District Office.....	3
Utility Costs and Rate Schedules.....	4
Benchmarking.....	5
Section 2: Energy Efficiency Measures (EEM) Summary.....	6
Lighting Systems Retrofit.....	7
Appendix – A.....	8
School Schedules and Maps.....	8
Academic Calendar.....	9
District Office Map.....	10
Appendix – B.....	11
Energy Utilization Analysis.....	11
Appendix – C.....	14
Lighting Systems Audit.....	14

Section 1: Facility Background

District Office

District Office is located at 1651 16th Street in Santa Monica, CA 90404. It is a school district serving 18 schools with students ranging from grades K-12 and provides instruction using 1 permanent building. The total amount of occupied space is 31,027 SF. For a complete map of the campus, see Appendix A.

The campus operates on an academic calendar that begins in late August and ends in late June. Winter Break is a two week break that begins at the end of December and goes to the first week of January. Spring Break is a one week break that begins in early-April. The District Office is open during normal business hours, Monday through Friday. For a complete academic calendar, refer to Appendix A.



Utility Costs and Rate Schedules

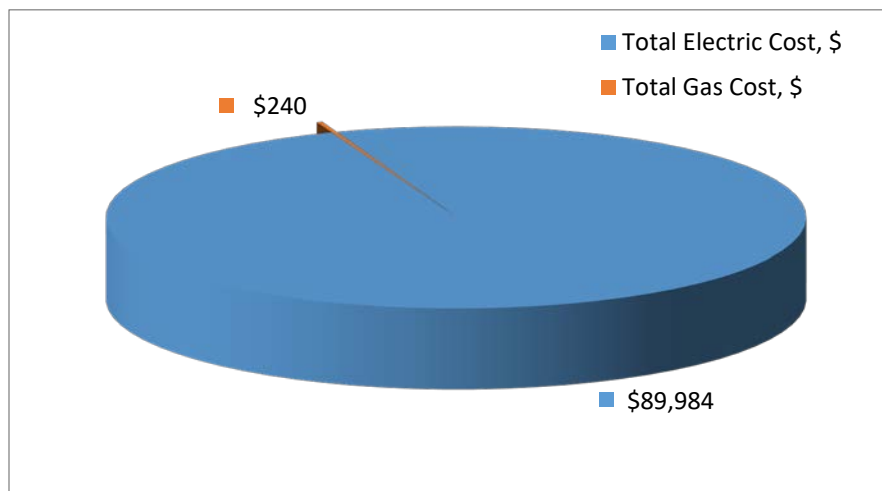
The District Office facilities receive electricity services from Southern California Edison (SCE) and gas services from SoCalGas (SCG). Monthly utility data is considered separately for each utility meter and each energy type (electricity, natural gas, propane, diesel, and water).

The following is a list of the meters associated with each energy type utilized at District Office:

Account Number	Meter Number	Rate Schedule
3-001-1511-90	259000-063705	TOU-GS-2-B
3-023-0160-72	259000-035874	TOU-GS-1-B
3-023-0160-90	256000-103006	TOU-GS-1-B
3-040-0315-71	256000-041365	TOU-GS-1-A
3-041-9029-47	256000-101233	TOU-GS-1-A

Account Number	Meter Number	Rate Schedule
207046800	12453392	GN-10

The utility data provided uses the data recovered from each of these meters during the period of July, 2015 to June, 2016. The cost comparison of District Office’s gas and electricity costs can be seen in the table below:



Benchmarking

As part of the site evaluation we determined the Energy Utilization Analysis (EUA) to provide important information about the energy usage of the school. Listed in the table below is the Benchmarking Report for District Office:

Energy Use Intensity Calculator					
Electricity		Natural Gas		Other Fuels	
4.87	<i>W/SF</i>	0.00	<i>Therms/SF</i>	0.00	<i>Gals/SF</i>
20.10	<i>kWh/SF</i>	\$ 0.01	<i>Cost/SF</i>	\$ 0.00	<i>Cost/SF</i>
\$ 2.90	<i>Cost/SF</i>				
Energy Costs/SF/Year		\$ 2.91	Energy Use(Kbtu)/SF/Year		215.61

The main purpose of this report is to assess the current energy usage of District Office. Energy consumption is analyzed compared to the site’s actual weather data expressed in Cooling Degree Days (CDD) & Heating Degree Days (HDD). Graphs comparing the energy consumption to the CDD and HDD can be found in Appendix B.

The Baseline Energy Utilization Analysis (EUA) report compiles the monthly energy data from all meters on site. The EUA is useful in identifying critical energy consuming benchmarks like kWh/SF, kBtu/SF, and Cost/SF for each fuel type and individual school site. This report is a great resource to have for identifying the lowest energy performing schools. The report ranking will present the schools that consume the most energy when compared to others within the district or other comparable districts. The considered school is rated at 20.10 kWh/SF/yr.

The baseline EUA summary of all the meters for District Office can be found in Appendix B.

Section 2: Energy Efficiency Measures (EEM) Summary

Energy savings are based on the difference between annual energy use under existing conditions and annual energy use under proposed conditions. These annual energy savings, and the corresponding annual energy cost savings, are used to determine the cost-effectiveness of the projects. Demand savings are calculated as the different between the electricity demand of the existing equipment and electricity demand of proposed equipment. The table below shows the Energy Efficiency Measures proposed and the corresponding savings associated with them.

EEM Number	Energy Efficiency Measure	Demand Savings (kW)	Electricity Savings (kWH/yr)	Natural Gas or Fuel Savings (therms or gal/yr)	Annual Cost Savings (\$)	Other Non-Repayable Funds (\$)	Installed Measure Cost (\$)
Lighting	Lighting – Interior Fixture Retrofit	15	31,626		\$4,554.00	\$38,000.00	\$79,421.00
Lighting	Lighting – Exterior Fixture Retrofit	2	7,479		\$1,077.00	\$5,000.00	\$18,545.00
Lighting	Lighting – Retrofit Interior Lamps to LED	4	8,957		\$1,290.00	\$11,500.00	\$21,211.00
	Totals	21	48,062		\$6,921.00	\$54,500.00	\$119,177.00

Lighting Systems Retrofit

A significant portion of a facilities electrical costs comes from lighting, making lighting retrofits one of the quickest and simplest methods for reducing utility costs. In most cases the retrofits will result in improved light quality and reduced maintenance costs in addition to the estimated energy savings.

The method used for calculating energy savings is outlined below:

$$\underline{\text{Annual Saving, } \$ = (\text{Existing Watts} - \text{New Watts}) / 1000 \times \text{Hours/Year} \times \text{Utility Rate} \times N}$$

Where,

- Existing Watts* – Wattage rating for the existing (Baseline) light fixture
- New Watts* – New wattage rating for the existing light fixture
- Hours/Year* – Annual number of “burn-hours” (run hours for different areas; see detailed audit in Appendix C)
- Utility Rate* – Actual weighted composite utility rate, \$/kWh
- N* – Number of light fixtures of the particular type (see below & in Appendix C for the actual quantities).

The current interior lighting systems in the District Office buildings consist of a combination of 1st generation T-8, compact fluorescent, and incandescent lamps and fixtures. Following examination of the data collected, a full retrofit of the lighting system with LED lamps and fixtures is recommended.

The current exterior lighting systems in the District Office buildings consist of compact fluorescent, metal halide, T5, 1st generation T-8, high pressure sodium, and incandescent lamps and fixtures. Following examination of the data collected, a full retrofit of the lighting system with LED lamps and fixtures is recommended.

This retrofit will generate more saving, electrical demand reduction and better payback than other Energy Conservation Measures such as HVAC replacements. Upon installment of the new system, the campus will conserve 21.231 kW and 48,062 kWh per year. The cost savings per year will be approximately \$6,920.94. A full detailed audit of the current lighting system implemented in the entire campus can be found in Appendix C.

Appendix – A

School Schedules and Maps

Academic Calendar

SANTA MONICA-MALIBU UNIFIED SCHOOL DISTRICT
2016-2017 District Calendar

Approved by the Board of Education: 3/19/15

July 2016					August 2016					September 2016				
M	T	W	Th	F	M	T	W	Th	F	M	T	W	Th	F
4	5	6	7	8	1	2	3	4	5	5	6	7	8	9
11	12	13	14	15	8	9	10	11	12	12	13	14	15	16
18	19	20	21	22	15	16	17	18	19	19	20	21	22	23
25	26	27	28	29	22	23	24	25	26	26	27	28	29	30

October 2016					November 2016					December 2016				
M	T	W	Th	F	M	T	W	Th	F	M	T	W	Th	F
3	4	5	6	7	1	2	3	4	5	5	6	7	8	9
10	11	12	13	14	7	8	9	10	11	12	13	14	15	16
17	18	19	20	21	14	15	16	17	18	19	20	21	22	23
24	25	26	27	28	21	22	23	24	25	26	27	28	29	30
31					28	29	30							

January 2017					February 2017					March 2017				
M	T	W	Th	F	M	T	W	Th	F	M	T	W	Th	F
2	3	4	5	6	6	7	8	9	10	6	7	8	9	10
9	10	11	12	13	13	14	15	16	17	13	14	15	16	17
16	17	18	19	20	20	21	22	23	24	20	21	22	23	24
23	24	25	26	27	27	28				27	28	29	30	31
30	31													

April 2017					May 2017					June 2017				
M	T	W	Th	F	M	T	W	Th	F	M	T	W	Th	F
3	4	5	6	7	1	2	3	4	5	5	6	7	8	9
10	11	12	13	14	8	9	10	11	12	12	13	14	15	16
17	18	19	20	21	15	16	17	18	19	19	20	21	22	23
24	25	26	27	28	22	23	24	25	26	26	27	28	29	30
					29	30	31							

- Legend:**
- = First/Last Day of School
 - = Legal Holiday
 - = Local Holiday (schools/offices closed)
 - = School Recess (classes not in session)
 - = Pupil Free Day (no school for students)
 - = Elem. Pupil Free Day (no school -elem students)
 - = Sec. Pupil Free Day (no school -sec students)
 - = Minimum Day for all students
 - = Certificated Staff Development Days

Employee Work Dates:

Sept. 1, 2016-June 30, 2017: * Classified 11-Month
 *must work 22 days in July/August, 2016

Aug. 8, 2016-June 21, 2017: Classified 10 +10

Aug. 15, 2016-June 14, 2017: Classified 10-Month

Aug. 17, 2016-June 9, 2017: Certificated/184 Days

Aug. 18, 2016-June 9, 2017: Certif.CDS/183 Days

Aug. 19, 2016-June 9, 2017: Classified School Year

Teacher Work Days: 184
Student Days: 180

1st Semester: Aug. 22 - Dec. 23 (84 days)
 2nd Semester: Jan. 10 - June 9 (96 days)

First Day of Instruction:
 - Monday, August 22, 2016

Last Day of Instruction:
 - Friday, June 9, 2017

Certificated Staff Development Days:
 (No Students)
 - Wednesday, August 17, 2016
 - Thursday, August 18, 2016

HOLIDAYS:
 July 4: 4th of July Holiday
 Sept. 5: Labor Day Holiday
 Oct. 3: Local Holiday
 Oct. 12: Local Holiday
 Nov. 11: Veteran's Day Holiday
 Nov. 24: Thanksgiving Holiday
 Nov. 25: Legal Holiday (Admission's Day observ)
 Dec. 26, 27: Winter Holidays
 Dec. 30, Jan. 2: New Years Holidays
 Jan. 16: Martin Luther King Jr. Holiday
 Feb. 20: Presidents' Day Holiday
 Apr. 7: Local Holiday
 Apr. 14: Legal Holiday (Lincoln's B'day observ)
 May 29: Memorial Day Holiday

SCHOOL RECESSES:
 Dec. 26 - Jan 6: Winter Recess
 Apr 3 - Apr 14: Spring Recess

PUPIL-FREE DAYS:
 Aug. 17: All Students
 Aug. 18: All Students
 Aug. 19: All Students
 Nov. 4: Elementary Students Only
 Jan. 9: Secondary Students Only

MINIMUM DAYS:
 TK/Kindergarten: Aug. 22, Aug. 23, 30, Nov. 7, 8, 9, 10, 23, Dec. 23, May 25, June 9
 Elementary: Aug. 22, 30, Sept. 6, Nov. 7, 8, 9, 10, 23, Dec. 23, May 25, June 9
 Santa Monica Middle Schools: Sept. 8, Nov. 23, Dec. 23, Mar. 31, Apr. 27, June 8, June 9, +1 discretionary
 Malibu MS/HS: Sept. 8, 15, Nov. 23, Dec. 21, 22, 23, March 9, June 6, 7, 8 + 1 discretionary
 Samohi: Sept. 15, Dec. 20, 21, 22, 23, Mar. 9, June 5, 6, 7, 8
 Olympic HS: Sept. 20, Nov. 23, Dec. 23, May 2, June 1, 2, 5, 6, 7, 8, 9

Back to School Nights:
 Tues. Aug. 30 - Elem TK-2
 Tues. Sept. 6 - Elem 3-5
 Thurs. Sept. 8 - Middle School
 Thurs. Sept. 15 - High School
 Tues. Sept. 20 - Olympic HS

Open House Nights:
 Thurs. May 25 - Elementary
 Thurs. April 27 - SM Middle Schools
 Thurs. March 9 - Malibu MS/HS and Samohi
 Tues. May 2 - Olympic HS

Promotions/Graduations:
 Wed. June 7 - Elementary
 Fri. June 9 - Middle School
 Thurs. June 8 - MMS 2:00 pm
 Samohi 5:30 pm
 Wed. May 31 - Olympic HS 5:30 pm

Parent Conference Days (TK-5):
 Nov. 4 - Nov. 10, 2016

Testing Dates: *expected, not confirmed*
 AP Testing: May 1 - May 12, 2017
 STAR: April 20 - May 18, 2017
 SBAC: April 20 - May 29, 2017

TK/Kindergarten Roundup:
 Jan. 30 - Feb. 10, 2017

Final Exams:
 Malibu MS/HS: Dec. 21-23, 2016
 June 6-8, 2017
 Samohi: Dec. 20-23, 2016
 June 5-8, 2017

Summer School:
 ISS: June 19-July 14, 2017
 Credit Recovery: June 19-Jul 21, 2017
 ESY: June 19-July 14, 2017

TK-5 Grading Periods:
 Conference: Nov. 4, 2016
 Winter Grading: Feb. 10, 2017
 Spring Grading: June 9, 2017

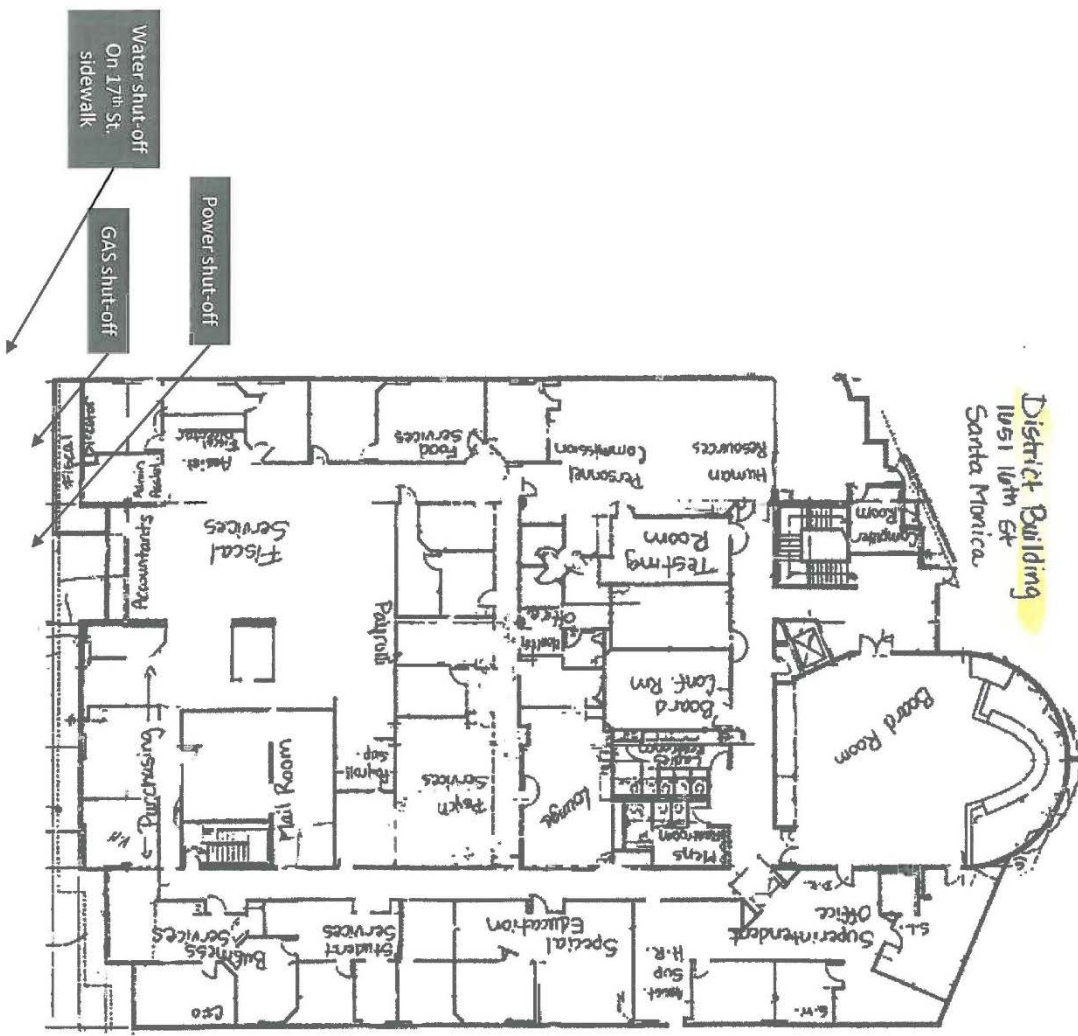
6-12 Grading Periods
 Aug. 22 - Sept. 30, 2016
 Oct. 4 - Nov. 10, 2016
 Nov. 14 - Dec. 23, 2016
 Jan. 9 - Feb. 24, 2017
 Feb. 27 - April 28, 2017
 May 1 - June 9, 2017



Revised 3/5/15



District Office Map



20

Appendix – B

Energy Utilization Analysis

Customer Name: **Santa Monica-Malibu USD**

Facility Name: District Office

Elec Utility Name: SCE Natural Gas Utility Name: SCG

Facility Location: 1651 16th Street, Santa Monica, CA

Sq. Ft. (conditioned space): 31,027

Billing Period

FROM: Jul-15

TO: Jun-16

Account #	Meter #	Rate Schedule	Account #	Meter #	Rate Schedule
2-07-030-4431	259000-063705	TOU-GS-2-B	6307342052	12453392	GN-10-NON-RESIDENTIAL
2-07-030-4431	259000-035874	TOU-GS-1-B	0	0	0
2-07-030-4431	256000-103006	TOU-GS-1-B	0	0	0
2-07-030-4431	256000-041365	TOU-GS-1-A	0	0	0

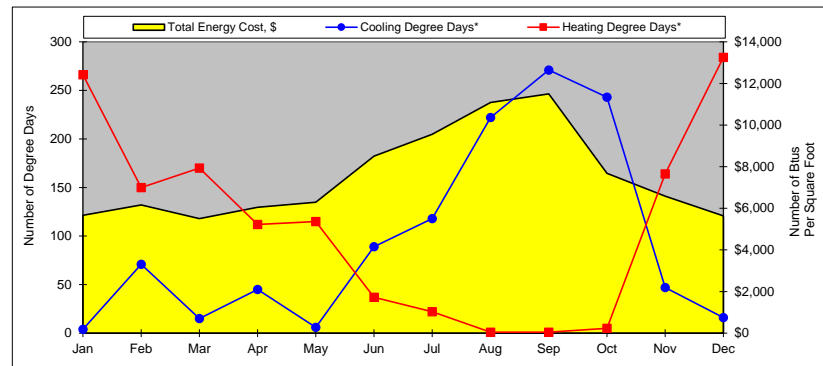
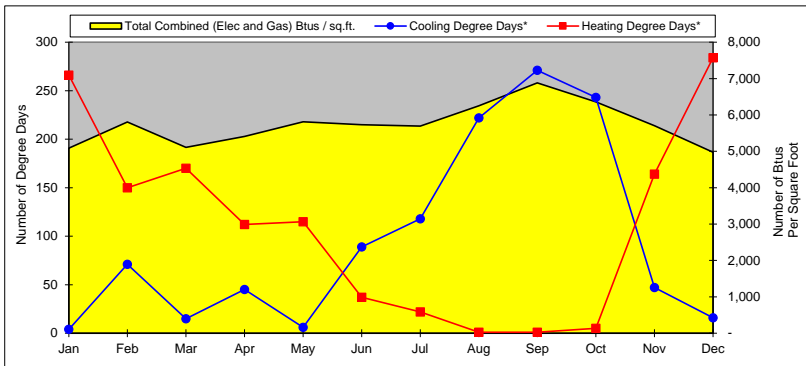
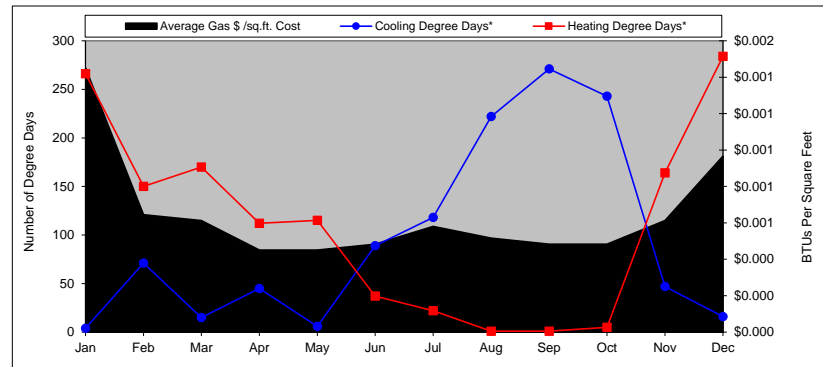
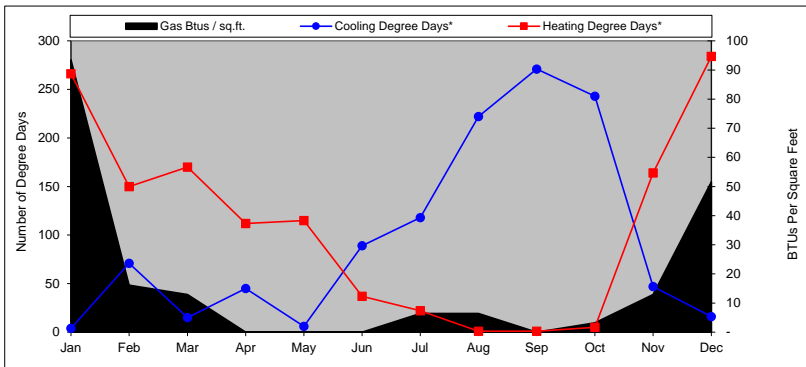
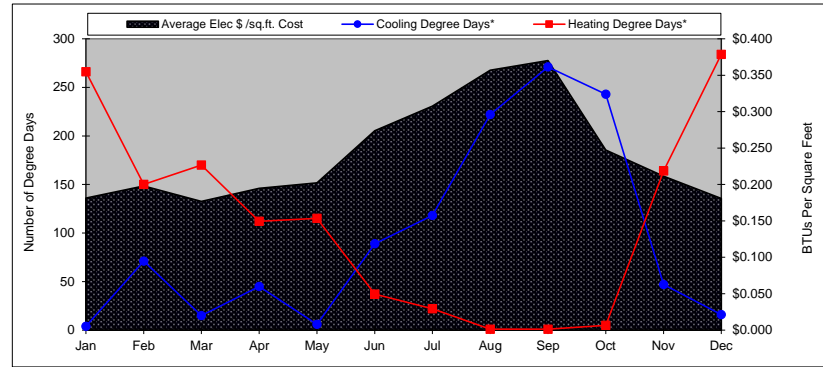
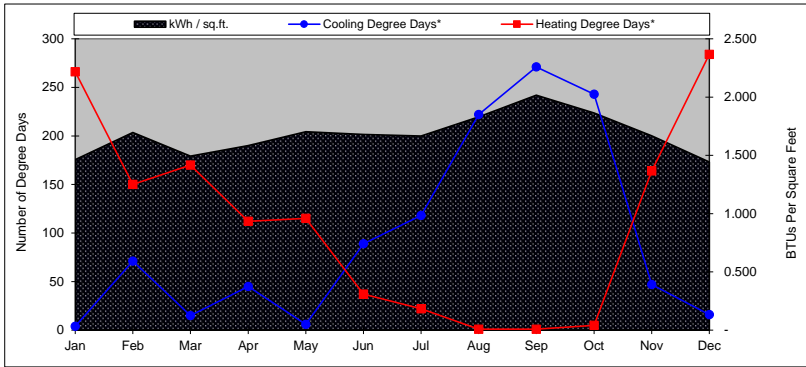
	Jan	Feb	Mar	Apr	May	Jun	Jul	Aug	Sep	Oct	Nov	Dec	TOTAL ANNUAL
Cooling Degree Days*	4	71	15	45	6	89	118	222	271	243	47	16	1,147
Heating Degree Days*	266	150	170	112	115	37	22	1	1	5	164	284	1,327
Days in Billing Period													
electric	29	32	30	29	32	30	29	29	32	30	33	30	365
natural gas	35	30	29	29	31	30	32	29	30	28	32	30	365
Electric Usage													
kWh per Billing Cycle	45,380	52,627	46,335	49,156	52,823	52,080	51,696	56,762	62,558	57,803	51,722	44,755	623,697
\$ for kWh Billed	\$3,884	\$4,367	\$3,941	\$4,177	\$4,408	\$4,400	\$5,513	\$6,109	\$6,581	\$5,818	\$5,163	\$4,316	\$58,677
Max kW Billed	143	150	130	155	132	155	145	172	188	179	136	123	151
\$ for kW Billed	\$1,739	\$1,774	\$1,541	\$1,862	\$1,870	\$4,092	\$4,027	\$4,961	\$4,903	\$1,849	\$1,397	\$1,292	\$31,307
Total Electric Cost, \$	\$5,623	\$6,141	\$5,482	\$6,039	\$6,278	\$8,492	\$9,540	\$11,070	\$11,484	\$7,667	\$6,560	\$5,608	\$89,984
Ave. Daily Electric Cost, \$	\$194	\$192	\$183	\$208	\$196	\$283	\$329	\$382	\$359	\$256	\$199	\$187	\$247
Average \$/kWh Cost	\$0.124	\$0.117	\$0.118	\$0.123	\$0.119	\$0.163	\$0.185	\$0.195	\$0.184	\$0.133	\$0.127	\$0.125	\$0.144
Average Elec \$ /sq.ft. Cost	\$0.181	\$0.198	\$0.177	\$0.195	\$0.202	\$0.274	\$0.307	\$0.357	\$0.370	\$0.247	\$0.211	\$0.181	\$2.900
kWh / sq.ft.	1.463	1.696	1.493	1.584	1.702	1.679	1.666	1.829	2.016	1.863	1.667	1.442	20.10
Natural Gas Usage													
Therms per Billing Cycle	29	5	4	-	-	-	2	2	-	1	4	16	63
Total Gas Cost, \$	\$45	\$20	\$19	\$14	\$14	\$15	\$18	\$16	\$15	\$15	\$19	\$30	\$240
Ave. Daily Gas Cost, \$	\$1	\$1	\$1	\$0	\$0	\$1	\$1	\$1	\$1	\$1	\$1	\$1	\$1
Average \$/therm Cost	\$1.552	\$4.000	\$4.750	#DIV/0!	#DIV/0!	#DIV/0!	\$9.000	\$8.000	#DIV/0!	\$15.000	\$4.750	\$1.875	\$3.810
Average Gas \$ /sq.ft. Cost	\$0.001	\$0.001	\$0.001	\$0.000	\$0.000	\$0.000	\$0.001	\$0.001	\$0.000	\$0.000	\$0.001	\$0.001	\$0.008
Gas Btus / sq.ft.	93	16	13	-	-	-	6	6	-	3	13	52	203
Total Energy Usage													
Combined (Elec and Gas) Btus / sq.ft.	5,085	5,805	5,110	5,407	5,811	5,729	5,693	6,250	6,881	6,362	5,702	4,975	68,810
Total Energy Cost, \$	\$5,668	\$6,161	\$5,501	\$6,053	\$6,292	\$8,507	\$9,558	\$11,086	\$11,499	\$7,682	\$6,579	\$5,638	\$90,224
Ave. Energy \$/sq.ft./period	\$0.18	\$0.20	\$0.18	\$0.20	\$0.20	\$0.27	\$0.31	\$0.36	\$0.37	\$0.25	\$0.21	\$0.18	\$2.91

* Notes:

- 1) Heating degree days and cooling degree days are based on 65 F.
- 2) Heating degree days and cooling degree days are based on Santa Monica weather data.

Customer: Santa Monica-Malibu USD
 Building: District Office

Energy Used from: Jul-15
 to: Jun-16



Appendix – C

Lighting Systems Audit



School Distric Santa Monica-Malibu USD - LED Option
 Address: 0
 0
 School: DISTRICT OFFICE
 School Adre: 1651 16TH ST.
 0

cost per kwh 0.144

LED Option

42.80 21.57 96,018.82 47,956.76 48,062.06 \$ 6,920.94

ORIGINAL AUDIT ID#	INTERIOR/EXTERIOR	SCHOOL DISTRICT	SCHOOL	ROOM	LIGHTING CODE (EXISTING)	ECM	PROPOSED FIXT	EXIST WATT	PROP WATT	EXIST OPER HRS	PROP OPER HRS	EXISTING KW	PROPOSED KW	EXISTING KWH	PROPOSED KWH	SAVED KWH	ANN SAVINGS
1	INTERIOR	NTA MONICA-MALIBU	DISTRICT OFFICE 1651 16T	LOBBY	T8-4'-32W-2L-EB/ISN-X-X	(LED)2L 12T8/4F/850/DIR, 97740 (1) QHE2X32UNV		9	59	2185	2185	0.531	0.288	1160.235	629.28	530.955	\$ 76.46
2	INTERIOR	NTA MONICA-MALIBU	DISTRICT OFFICE 1651 16T	STAIR STORAGE	CF/S-TWST-23W-1L-SELF-X-X	(LED)1L A19 14W 5000K E26, 455717		1	23	400	400	0.023	0.014	9.2	5.6	3.6	\$ 0.52
3	INTERIOR	NTA MONICA-MALIBU	DISTRICT OFFICE 1651 16T	M.O. OPEN OFFICE	T8-4'-32W-2L-EB/ISN-X-X	(LED)2L 12T8/4F/850/DIR, 97740 (1) QHE2X32UNV		13	59	2185	2185	0.767	0.416	1675.895	908.96	766.935	\$ 110.44
4	INTERIOR	NTA MONICA-MALIBU	DISTRICT OFFICE 1651 16T	MO CONFERENCE	T8-4'-32W-2L-EB/ISN-X-X	(LED)2L 12T8/4F/850/DIR, 97740 (1) QHE2X32UNV		2	59	2185	2185	0.118	0.064	257.83	139.84	117.99	\$ 16.99
5	INTERIOR	NTA MONICA-MALIBU	DISTRICT OFFICE 1651 16T	MO IT	T8-4'-32W-2L-EB/ISN-X-X	(LED)2L 12T8/4F/850/DIR, 97740 (1) QHE2X32UNV		2	59	2185	2185	0.118	0.064	257.83	139.84	117.99	\$ 16.99
6	INTERIOR	NTA MONICA-MALIBU	DISTRICT OFFICE 1651 16T	MO IT	T8-4'-32W-2L-EB/ISN-X-X	(LED)2L 12T8/4F/850/DIR, 97740 (1) QHE2X32UNV		2	59	2185	2185	0.118	0.064	257.83	139.84	117.99	\$ 16.99
7	INTERIOR	NTA MONICA-MALIBU	DISTRICT OFFICE 1651 16T	MO OFFICE	T8-4'-32W-2L-EB/ISN-X-X	(LED)2L 12T8/4F/850/DIR, 97740 (1) QHE2X32UNV		2	59	2185	2185	0.118	0.064	257.83	139.84	117.99	\$ 16.99
8	INTERIOR	NTA MONICA-MALIBU	DISTRICT OFFICE 1651 16T	MO PLANS	T8-4'-32W-2L-EB/ISN-X-X	(LED)2L 12T8/4F/850/DIR, 97740 (1) QHE2X32UNV		4	59	2185	2185	0.236	0.128	515.66	279.68	235.98	\$ 33.98
9	INTERIOR	NTA MONICA-MALIBU	DISTRICT OFFICE 1651 16T	MO OFFICE	T8-4'-32W-2L-EB/ISN-X-X	(LED)2L 12T8/4F/850/DIR, 97740 (1) QHE2X32UNV		3	59	2185	2185	0.177	0.096	386.745	209.76	176.985	\$ 25.49
10	INTERIOR	NTA MONICA-MALIBU	DISTRICT OFFICE 1651 16T	IT OFFICE	T8-4'-32W-2L-EB/ISN-X-X	(LED)2L 12T8/4F/850/DIR, 97740 (1) QHE2X32UNV		4	59	2185	2185	0.236	0.128	515.66	279.68	235.98	\$ 33.98
11	INTERIOR	NTA MONICA-MALIBU	DISTRICT OFFICE 1651 16T	IT STORAGE	T12-8'-75W-2L-MB/IS-X-X	(LED)NEW 8' WRAP W/ (4)12T8/4F/850/DIR AND (1		123	64	400	400	0.492	0.256	196.8	102.4	94.4	\$ 13.59
12	INTERIOR	NTA MONICA-MALIBU	DISTRICT OFFICE 1651 16T	IT RESTROOM	US-A19-60W-1L-NONE-X-X	(LED)1L A19 8W 5000K E26, 455600		1	60	2185	2185	0.06	0.008	131.1	17.48	113.62	\$ 16.36
13	INTERIOR	NTA MONICA-MALIBU	DISTRICT OFFICE 1651 16T	IT RESTROOM	CF/S-TWST-23W-1L-SELF-X-X	(LED)1L A19 14W 5000K E26, 455717		1	23	2185	2185	0.023	0.014	50.255	30.59	19.665	\$ 2.83
14	INTERIOR	NTA MONICA-MALIBU	DISTRICT OFFICE 1651 16T	IT RESTROOM	US-A15-15W-1L-NONE-X-X	(LED)1L GREEN CREATIVE 6G25DIM/827, 97729 (P		12	15	2185	2185	0.18	0.072	393.3	157.32	235.98	\$ 33.98
15	INTERIOR	NTA MONICA-MALIBU	DISTRICT OFFICE 1651 16T	IT DATA ROOM	LED/1-2X2-31W-INT-DRIV-X-X	EXCLUDED/NO CHANGE		19	34	2185	2185	0.646	0.646	1411.51	1411.51	0	\$ -
16	INTERIOR	NTA MONICA-MALIBU	DISTRICT OFFICE 1651 16T	IT DATA ROOM	LED/1-1X4-25W-INT-DRIV-X-X	EXCLUDED/NO CHANGE		5	28	2185	2185	0.14	0.14	305.9	305.9	0	\$ -
17	INTERIOR	NTA MONICA-MALIBU	DISTRICT OFFICE 1651 16T	IT DATA ROOM	LED/1-STR/8'-50W-INT-DRIV-X-X	EXCLUDED/NO CHANGE		9	53	2185	2185	0.477	0.477	1042.245	1042.245	0	\$ -
18	INTERIOR	NTA MONICA-MALIBU	DISTRICT OFFICE 1651 16T	IT REAR OFFICE	T12-4'-34RW-4L-MB/IS-IO-X	(LED)4L 12T8/4F/850/DIR, 97740 (2) QHE2X32UNV		144	64	2185	2185	0.576	0.256	1258.56	559.36	699.2	\$ 100.68
19	INTERIOR	NTA MONICA-MALIBU	DISTRICT OFFICE 1651 16T	IT REAR OFFICE	T12-4'-34RW-4L-MB/IS-X-X	(LED)4L 12T8/4F/850/DIR, 97740 (1) QHE4X32UNV		1	144	2185	2185	0.144	0.064	314.64	139.84	174.8	\$ 25.17
20	INTERIOR	NTA MONICA-MALIBU	DISTRICT OFFICE 1651 16T	EDUCATION FOUNDAT	HI/S-R38-75W-1L-NONE-X-X	(LED)1L GREEN CREATIVE 12.5PAR30G4DIM940F		56	75	2185	2185	4.2	0.7	9177	1529.5	7647.5	\$ 1,101.24
21	INTERIOR	NTA MONICA-MALIBU	DISTRICT OFFICE 1651 16T	EDUCATION FOUNDAT	HI/S-R20-50W-1L-NONE-X-X	(LED)1L GREEN CREATIVE 7PAR20G4DIM927FL4		9	50	2185	2185	0.45	0.063	983.25	137.655	845.595	\$ 121.77
22	INTERIOR	NTA MONICA-MALIBU	DISTRICT OFFICE 1651 16T	EDUCATION FOUNDAT	CF/S-TWST-13W-2L-SELF-X-X	(LED)2L A19 8W 5000K E26, 455600		2	26	2185	2185	0.052	0.032	113.62	69.92	43.7	\$ 6.29
23	INTERIOR	NTA MONICA-MALIBU	DISTRICT OFFICE 1651 16T	INFORMATION SERVIC	T8-4'-32W-2L-EB/ISN-X-X	(LED)2L 12T8/4F/850/DIR, 97740 (1) QHE2X32UNV		16	59	2185	2185	0.944	0.512	2062.64	1118.72	943.92	\$ 135.92
24	INTERIOR	NTA MONICA-MALIBU	DISTRICT OFFICE 1651 16T	INFORMATION SERVIC	T8-4'-32W-4L-EB/ISN-X-X	(LED)4L 12T8/4F/850/DIR, 97740 (1) QHE4X32UNV		2	112	2185	2185	0.224	0.128	489.44	279.68	209.76	\$ 30.21
25	INTERIOR	NTA MONICA-MALIBU	DISTRICT OFFICE 1651 16T	INFORMATION SERVIC	T8-4'-32W-2L-EB/ISN-X-X	(LED)2L 12T8/4F/850/DIR, 97740 (1) QHE2X32UNV		1	59	2185	2185	0.059	0.032	128.915	69.92	58.995	\$ 8.50
26	INTERIOR	NTA MONICA-MALIBU	DISTRICT OFFICE 1651 16T	WAREHOUSE	T8-4'-32W-2L-EB/ISN-X-X	(LED)2L 12T8/4F/850/DIR, 97740 (1) QHE2X32UNV		106	59	2250	2250	6.254	3.392	14071.5	7632	6439.5	\$ 927.29
27	INTERIOR	NTA MONICA-MALIBU	DISTRICT OFFICE 1651 16T	WAREHOUSE	T8-4'-32W-1L-EB/ISN-X-X	(LED)1L 12T8/4F/850/DIR, 97740 (1) QHE2X32UNV		2	59	2250	2250	0.062	0.032	139.5	72	67.5	\$ 9.72
28	INTERIOR	NTA MONICA-MALIBU	DISTRICT OFFICE 1651 16T	WAREHOUSE	T8-4'-32W-2L-EB/ISN-X-X	(LED)2L 12T8/4F/850/DIR, 97740 (1) QHE2X32UNV		22	59	2250	2250	1.298	0.704	2920.5	1584	1336.5	\$ 192.46
29	INTERIOR	NTA MONICA-MALIBU	DISTRICT OFFICE 1651 16T	WAREHOUSE	T8-4'-32W-2L-EB/ISN-X-X	(LED)2L 12T8/4F/850/DIR, 97740 (1) QHE2X32UNV		8	59	2250	2250	0.472	0.256	1062	576	486	\$ 69.98
30	INTERIOR	NTA MONICA-MALIBU	DISTRICT OFFICE 1651 16T	WAREHOUSE	T8-4'-32W-4L-EB/ISN-X-X	(LED)4L 12T8/4F/850/DIR, 97740 (1) QHE4X32UNV		13	112	2250	2250	1.456	0.832	3276	1872	1404	\$ 202.18
31	INTERIOR	NTA MONICA-MALIBU	DISTRICT OFFICE 1651 16T	WAREHOUSE	US-A19-60W-1L-NONE-X-X	(LED) 1L GREEN CREATIVE A19 9W E26 4000K 85		1	60	2250	2250	0.06	0.009	135	20.25	114.75	\$ 16.52
32	INTERIOR	NTA MONICA-MALIBU	DISTRICT OFFICE 1651 16T	WAREHOUSE	T8-4'-32W-1L-EB/ISN-X-X	(LED)1L 12T8/4F/850/DIR, 97740 (1) QHE2X32UNV		7	31	2250	2250	0.217	0.112	488.25	252	236.25	\$ 34.02
33	INTERIOR	NTA MONICA-MALIBU	DISTRICT OFFICE 1651 16T	WAREHOUSE	T8-4'-32W-4L-EB/ISN-X-X	(LED)4L 12T8/4F/850/DIR, 97740 (1) QHE4X32UNV		2	112	2250	2250	0.224	0.128	504	288	216	\$ 31.10
34	INTERIOR	NTA MONICA-MALIBU	DISTRICT OFFICE 1651 16T	2ND FLOOR OPEN ARE	T8-4'-32W-2L-EB/ISN-X-X	(LED)2L 12T8/4F/850/DIR, 97740 (1) QHE2X32UNV		16	59	2185	2185	0.944	0.512	2062.64	1118.72	943.92	\$ 135.92
35	INTERIOR	NTA MONICA-MALIBU	DISTRICT OFFICE 1651 16T	2ND FLOOR OPEN ARE	T8-4'-32W-2L-EB/ISN-X-X	(LED)2L 12T8/4F/850/DIR, 97740 (1) QHE2X32UNV		5	59	2185	2185	0.295	0.16	644.575	349.6	294.975	\$ 42.48
36	INTERIOR	NTA MONICA-MALIBU	DISTRICT OFFICE 1651 16T	PERSONEL	T8-4'-32W-2L-EB/ISN-X-X	(LED)2L 12T8/4F/850/DIR, 97740 (1) QHE2X32UNV		30	59	2185	2185	1.77	0.96	3867.45	2097.6	1769.85	\$ 254.86
37	INTERIOR	NTA MONICA-MALIBU	DISTRICT OFFICE 1651 16T	TESTING	T8-4'-32W-2L-EB/ISN-X-X	(LED)2L 12T8/4F/850/DIR, 97740 (1) QHE2X32UNV		12	59	2185	2185	0.708	0.384	1546.98	839.04	707.94	\$ 101.94
38	INTERIOR	NTA MONICA-MALIBU	DISTRICT OFFICE 1651 16T	TESTING	CF/S-TWST-23W-1L-SELF-X-X	(LED)1L GREEN CREATIVE 12A19G4DIM/840 (161)		2	23	2185	2185	0.046	0.024	100.51	52.44	48.07	\$ 6.92
39	INTERIOR	NTA MONICA-MALIBU	DISTRICT OFFICE 1651 16T	ELECTRICAL	T8-4'-32W-1L-EB/ISN-X-X	(LED)1L 12T8/4F/850/DIR, 97740 (1) QHE2X32UNV		1	31	400	400	0.031	0.016	12.4	6.4	6	\$ 0.86
40	INTERIOR	NTA MONICA-MALIBU	DISTRICT OFFICE 1651 16T	BOARD CONFERENCE	T8-4'-32W-2L-EB/ISN-X-X	(LED)2L 12T8/4F/850/DIR, 97740 (1) QHE2X32UNV		6	59	2185	2185	0.354	0.192	773.49	419.52	353.97	\$ 50.97
41	INTERIOR	NTA MONICA-MALIBU	DISTRICT OFFICE 1651 16T	BOARD CONFERENCE	CF/S-TWST-23W-1L-SELF-X-X	(LED)1L GREEN CREATIVE 12A19G4DIM/840 (161)		23	23	2185	2185	0.138	0.072	301.53	157.32	144.21	\$ 20.77
42	INTERIOR	NTA MONICA-MALIBU	DISTRICT OFFICE 1651 16T	RESTROOMS	T8-4'-32W-2L-EB/ISN-X-X	(LED)2L 12T8/4F/850/DIR, 97740 (1) QHE2X32UNV		8	59	2185	2185	0.472	0.256	1031.32	559.36	471.96	\$ 67.96
43	INTERIOR	NTA MONICA-MALIBU	DISTRICT OFFICE 1651 16T	SUPERINTENDANT	T8-4'-32W-2L-EB/ISN-X-X	(LED)2L 12T8/4F/850/DIR, 97740 (1) QHE2X32UNV		8	59	2185	2185	0.472	0.256	1031.32	559.36	471.96	\$ 67.96
44	INTERIOR	NTA MONICA-MALIBU	DISTRICT OFFICE 1651 16T	SUPERINTENDANT	T8-4'-32W-2L-EB/ISN-X-X	(LED)2L 12T8/4F/850/DIR, 97740 (1) QHE2X32UNV		16	59	2185	2185	0.944	0.512	2062.64	1118.72	943.92	\$ 135.92
45	INTERIOR	NTA MONICA-MALIBU	DISTRICT OFFICE 1651 16T	SUPERINTENDANT	CF/4P-DOUB-13W-1L-EB-X-X	(LED)1L GREEN CREATIVE 4 PIN PLUG & PLAY 40		1	15	2185	2185	0.015	0.011	32.775	24.035	8.74	\$ 1.26
46	INTERIOR	NTA MONICA-MALIBU	DISTRICT OFFICE 1651 16T	SUPERINTENDANT	T8-2'-17W-2L-EB/ISN-X-X	(LED)2L 8T8/2F/840/DIR, 97743 (1) QHE2X32UNV/1		1	33	2185	2185	0.033	0.021	72.105	45.885	26.22	\$ 3.78
47	INTERIOR	NTA MONICA-MALIBU	DISTRICT OFFICE 1651 16T	HALLWAY	T8-4'-32W-2L-EB/ISN-X-X	(LED)2L 12T8/4F/850/DIR, 97740 (1) QHE2X32UNV		14	59	2185	2185	0.826	0.448	1804.81	978.88	825.93	\$ 118.93
48	INTERIOR	NTA MONICA-MALIBU	DISTRICT OFFICE 1651 16T	CUSTODIAN	T8-4'-32W-2L-EB/ISN-X-X	(LED)2L 12T8/4F/850/DIR, 97740 (1) QHE2X32UNV		1	23	400	400	0.059	0.032	23.6	12.8	10.8	\$ 1.56
49	INTERIOR	NTA MONICA-MALIBU	DISTRICT OFFICE 1651 16T	LOUNGE	T8-4'-32W-2L-EB/ISN-X-X	(LED)2L 12T8/4F/850/DIR, 97740 (1) QHE2X32UNV		10	59	2185	2185	0.59	0.32	1289.15	699.2	589.95	\$ 84.95
50	INTERIOR	NTA MONICA-MALIBU	DISTRICT OFFICE 1651 16T	LOUNGE	CF/S-TWST-23W-1L-SELF-X-X	(LED)1L GREEN CREATIVE 12A19G4DIM/840 (161)		23	23	2185	2185	0.023	0.012	50.255	26.22	24.035	\$ 3.46
51	INTERIOR	NTA MONICA-MALIBU	DISTRICT OFFICE 1651 16T	SPECIAL ED	T8-4'-32W-2L-EB/ISN-X-X	(LED)2L 12T8/4F/850/DIR, 97740 (1) QHE2X32UNV		15	59	2185	2185	0.885	0.48	1933.725	1048.8	884.925	\$ 127.43
52	INTERIOR	NTA MONICA-MALIBU	DISTRICT OFFICE 1651 16T	STUDENT SERVICES	T8-4'-32W-2L-EB/ISN-X-X	(LED)2L 12T8/4F/850/DIR, 97740 (1) QHE2X32UNV		10	59	2185	2185	0.59	0.32	1289.15	699.2	589.95	\$ 84.95
53	INTERIOR	NTA MONICA-MALIBU	DISTRICT OFFICE 1651 16T	CONFERENCE	T8-4'-32W-2L-EB/ISN-X-X	(LED)2L 12T8/4F/850/DIR, 97740 (1) QHE2X32UNV		2	59	2185	2185	0.118	0.064	257.83	139.84	117.99	\$ 16.99
54	INTERIOR	NTA MONICA-MALIBU	DISTRICT OFFICE 1651 16T	PRINTING	T8-4'-32W-2L-EB/ISN-X-X	(LED)2L 12T8/4F/850/DIR, 97740 (1) QHE2X32UNV		11	59	2185	2185	0.649	0.352	1418.065	769.12	648.945	\$ 93.45
55	INTERIOR	NTA MONICA-MALIBU	DISTRICT OFFICE 1651 16T	PRINTING	T8-4'-32W-2L-EB/ISN-X-X	(LED)2L 12T8/4F/850/DIR, 97740 (1) QHE2X32UNV		1	59	2185	2185	0.059	0.032	128.915	69.92	58.995	\$ 8.50
56	INTERIOR	NTA MONICA-MALIBU	DISTRICT OFFICE 1651 16T	204	T8-4'-32W-2L-EB/ISN-X-X	(LED)2L 12T8/4F/850/DIR, 97740 (1) QHE2X3											