

For a Listing of Upcoming Board Meetings See Page vi of this Table of Contents
Santa Monica-Malibu Unified School District
Board of Education Meeting
MINUTES

October 17, 2013

A regular meeting of the Santa Monica-Malibu Unified School District Board of Education was held on Thursday, October 17, 2013, in the District Administrative Offices: 1651 16th Street, Santa Monica, CA. The Board of Education called the meeting to order at 4:40 p.m. in the Board Conference Room at the District Offices. At 4:41 p.m., the Board of Education moved to Closed Session regarding the items listed below. The public meeting reconvened at 6:15 p.m. in the Board Room.

CLOSED SESSION (4:30-5:30 p.m.)

I. PUBLIC COMMENTS FOR CLOSED SESSION ITEMS ONLY

Persons wishing to address the Board of Education regarding an item scheduled for closed session must submit the "Request to Address" card prior to the start of closed session.

II. CLOSED SESSION (60 minutes)

- Government Code §54957 (5)
PUBLIC EMPLOYEE DISCIPLINE/DISMISSAL/RELEASE
- Government Code §54956.8 (5)
CONFERENCE WITH REAL PROPERTY NEGOTIATORS
 - Property: 902 Colorado Avenue, Santa Monica, CA
 - Agency Negotiator: Sandra Lyon
 - Negotiating Parties: Santa Monica-Malibu Unified School District (SMMUSD), Southern California Edison (SCE), Exposition Metro Construction Authority (EXPO)
 - Under Negotiation: Instruction to negotiator will concern both price and terms of payment
- Government Code §54956.9(d)(2) (25)
CONFERENCE WITH LEGAL COUNSEL – ANTICIPATED LITIGATION – SIGNIFICANT EXPOSURE TO LITIGATION
 - DN-1001-13/14 (Special Education)
Postponed to 11/7/13
 - DN-1002-13/14 (Special Education)
Postponed to 11/7/13
- Government Code §54957.6 (25)
CONFERENCE WITH LABOR NEGOTIATORS
 - Agency designated representative: Sandra Lyon
 - Employee Organizations: SMMCTA and SEIU

There was no action to report out of closed session.

OPEN SESSION (5:30 p.m.)

6:15 pm

III. CALL TO ORDER

A. Roll Call

Board of Education Members

Laurie Lieberman – President

Maria Leon-Vazquez – Vice President

Ben Allen

Oscar de la Torre

Jose Escarce

Ralph Mechur

Nimish Patel

B. Pledge of Allegiance
Led by Michael Jacobson

6:16 pm **IV. APPROVAL OF THE AGENDA**
It was moved by Mr. Mechur, seconded by Mr. de la Torre, and voted 7/0 to approve the agenda. The board agreed to move the general public comments section to follow approval of the minutes to allow students to speak earlier in the evening.

6:16 pm **V. APPROVAL OF MINUTES**
A.01 October 3, 20131

VI. BOARD OF EDUCATION – COMMENDATIONS / RECOGNITIONS (0 minutes)

6:28 pm **VII. STUDY SESSION** (60 minutes)
These items are staff presentations and/or updates to the Board of Education.
S.01 Enrollment and Staffing Data for 2013-14 (60)2

VIII. COMMUNICATIONS (30 minutes)

The Communications section provides an opportunity for the Board of Education to hear reports from the individuals or committee representatives listed below. All reports are limited to 5 minutes or less. However, if more time is necessary, or if a report will not be presented, please notify the Board secretary eight workdays prior to the date of the meeting.

8:00 pm **A. Student Board Member Reports** (15)

1. Matthew Ware – Santa Monica High School

Student Board Member Ware reported that Samohi participated in the Great Shakeout this morning to prepare for a real earthquake. The theme of the College Fair was Life after Samohi and was on Tuesday night in the south gym. During the fair, seniors confirmed their college choices. The PSAT will be administered to students this weekend. The football team will play Beverly Hills tomorrow. On Monday, the water polo team will play Torrance at 3:00pm. The fall band concert will be next Tuesday in Barnum Hall. The Safe Routes to School meeting will be on October 23 in the Pacific Auditorium; the team plans to propose making Michigan and 7th a one-way street.

8:02 pm **2. Michael Jacobson – Malibu High School**

Student Board Member Jacobson reported that Bike It! Walk It! Bus It! Pool It! Day was on October 11. The high school Drama Department will be performing The Laramie Project on November 21-24. The Erase Hate program plans to turn the fence outside the theater into a Peace Fence by decorating it with ribbons. Today on campus was Think Pink Day in honor of Breast Cancer Awareness Month.

8:03 pm **3. Amanda Huffman – Olympic High School**

Student Board Member Huffman reported that new teacher Mr. Bushin is leading after school readings and discussions on the works of Edith Wharton every Wednesday afternoon. Mr. Suminski raised money over the summer on donorchoose.org to purchase a sandblaster booth for his woodshop class. He is also continuing a project, inspired by Board Member Mechur, that involves city planning and will span several semesters. On September 23, local trainer and friend to Olympic High School, Kris Reid, work with staff on how to properly use the new gym's equipment that had been donated earlier by the Fairmont Miramar Hotel. Joe Dimercurio, the Malibu High School librarian worked with Olympic High School staff on the on-campus library. On October 4, the Human Relations Council's

Intergenerational Project started, matching up Olympic High School students with senior citizens from the community. The pairs will spend five weeks working on a creative art project, which will be presented at the HRC meeting on November 21. During October 7 through October 11, Olympic High School participated in Bike It! Walk It! Week. Out of sixty-eight students at Olympic High School, forty walked, seventeen biked, ten skateboarded, seventeen took the bus, four carpooled, and twenty-seven took the family car as transportation. Two recruiters from the Marines spoke to students on October 10 regarding life as a Marine and how to enlist in the service. On October 12, students George Daniels and Kelson Kaisaki were honored at a dinner at the Bonaventure Hotel for their winning entries in the "Go for Broke National Education Center's High School & College Student Essay Contest." Mr. Fuller and Ms. Miller will be taking students to the Natural History Museum on October 21. Today, SMMUSD and districts across the state participated in the Great Shakeout earthquake drill. Olympic High School's drill was successful.

8:06 pm

B. SMMCTA Update – Ms. Sarah Braff (5)

Ms. Braff acknowledged the district's efforts to keep class sizes in the elementary schools small, but she said some TK, K, and grade 1 teachers are having difficulty fitting the assessments in the allotted one school day. She said special education aides could benefit from more training. Ms. Braff stated that 329 classes are over the contract ratio level, with the highest levels at Malibu High School. She requested that the district provide her with enrollment numbers in a more timely manner. She thanked senior staff for everything they have done in response to the recent issues at Malibu High School. Ms. Braff thanked Dr. Bradford for today's workshop on the new report cards and thanked Dr. Deloria for meeting with teachers to create a survey regarding the needs for professional development.

8:15 pm

C. S.E.I.U. Update – Ms. Keryl Cartee-McNeely (5)

Ms. Cartee-McNeely thanked Ms. Lyon, the district, and the EOC for the immediate and thorough response regarding the recent Malibu High School environmental concerns as well as the continuing updates. She reported that the union continues to communicate information about the Affordable Care Act (ACA) with unit members. Ms. Cartee-McNeely feels that the ACA will help classified employees who do not have health benefits. The Labor Management Team will meet with the operations and grounds staff on November 13 to identify concerns and problem-solve collaboratively. The Professional Growth and Training Committee has reached out to all departments to determine what in-service training is currently in place. The committee will take that data and create a master calendar of in-service training for the next school year. Negotiations with the district are scheduled for October 29 and 30.

8:19 pm

D. PTA Council – Ms. Patti Braun (5)

Ms. Braun reported that last week was Walk It! Bike It! Week, of which the PTA Council is a huge supporter. Last night, the PTA-SMMEF liaisons met last night to discuss strategies for fundraising. In regards to the Malibu high School concerns, MHS PTA President Amy Young shared that today's Malibu Task Force meeting received a positive response. Ms. Braun shared parents' approval of Mr. Block and MHS counselors meeting with students in small classroom settings to discuss environmental concerns. She thanked Ms.

Lyon and senior staff for the quick and compassionate response to the environmental concerns at Malibu High School. At Tuesday's full council meeting, Dr. Deloria will present on STEM and Ms. Maez will present on LCFF. Ms. Braun reported that she has been working with Dr. Deloria and Educational Services to create a series of webinars on the Common Core State Standards.

IX. SENIOR STAFF REPORTS (20 minutes)

8:26 pm

A. Asst. Supt., Educational Services – Dr. Terry Deloria (5)

Dr. Deloria reported that Educational Services staff held the first STEM Task Force meeting with teachers. They will be presenting to the board in the spring how the district plans to move forward with more STEM offerings. Dr. Deloria attend an ROP conference with SMC's Louise Jaffe and presented on college readiness data. During the pupil-free day on October 30, Malibu High School instructional assistants will receive training in fluency strategies while the PE coaches also receive training.

8:29 pm

B. Assoc. Supt., Business & Fiscal Services/CFO – Ms. Janece Maez (5)

Ms. Maez reported that the Great Shakeout drill today was successful, and the district office EOC learned even more about what could be done to improve emergency preparedness. The Business and Fiscal Department is preparing for the first budget revisions and interim report. Ms. Maez said she was pleased with the work of the Labor Management Team and operations and ground staff. She thanked Ms. Cartee-McNeely on bringing these groups together.

8:31 pm

C. Asst. Supt., Human Resources – Ms. Debra Moore Washington (5)

Ms. Washington reported that the district engaged in negotiations with SMMCTA this week and is looking forward to negotiating with SEIU next week. She is encouraged with the progress being made with Interest-Based Bargaining (IBB) with both bargaining units. The district continues to communicate the details of the ACA with employees, and is interested in partnering with SEIU to get information out to the classified staff. The district held an ACA workshop for staff on October 9. The application process for the McKinley Elementary School principalship has closed. The district received thirty-nine applications, which will now be screened. Ms. Washington met with the McKinley staff and parents to determine the skills and qualities they want in the new principal. Interviews will be held on October 24, with a principal scheduled to be in place sometime in November.

8:33 pm

D. Superintendent – Ms. Sandra Lyon (5)

Ms. Lyon summarized the situation in Malibu regarding environmental concerns. Staff had already begun looking into it when the issue was raised during public comments at October 3 board meeting. During the past ten days, there has been a team effort to respond to the concerns. The district is speaking and working with experts to outline a plan going forward. There was a community meeting last week at the school, a task force was formed, and it met for the first time today. The Emergency Operations Center was engaged to determine the next logical steps. Ms. Lyon reminded the board that while such concerns arise in other school districts, the media attention here has been concentrated. The district has hired Mark Katchen from the Phylmar Group to coordinate all aspects of the planning, testing, and the communicating with the community. Testing documents, media statements, and task force meeting summaries will be posted online for the public to read. The goal of the task force is to provide an outlet for two-way communication

with parents, staff, students, community members. Malibu community liaison Elaine Rene-Weissman has agreed to be a conduit between the task force and the community. The task force held its first meeting today, the summary of which will be posted online. The task force is working with Mark Katchen to create a plan for testing. During the past two days, Mr. Katchen has met with staff and conducted the first physical assessment of the facilities. The district understands that there is a sense of urgency to get test results, but also recognizes the importance of doing the work thoroughly and making informed decisions. The district will work with environmental and medical experts to conduct educational meetings with the community. An FAQ will be developed and posted online. Questions for the FAQ can be emailed to mhsfaq@smmusd.org. Dr. Mark Kelly is meeting with Malibu High School ELAC tonight about the environmental concerns. The LA County Department of Public Health is helping to review a fact sheets. Additional information will be presented to the board at a future meeting. The full mold testing report will be posted online shortly. Ms. Lyon introduced Mark Katchen to the board. He acknowledged that staff and the community are truly interested in getting to the truth and communicating it publically.

8:45 pm X.

CONSENT CALENDAR (10 minutes)

As agreed by the President, Vice President, and Superintendent during agenda planning, consent agenda items are considered routine, require no discussion, and are normally approved all at once by the Board of Education. However, members of the Board of Education, staff, or the public may request an item be moved from the consent agenda to Section XI (Major Items) for clarification and/or discussion.

Curriculum and Instruction

A.02	Approval of Independent Contractors.....	3
A.03	Overnight Field Trip(s) 2012-2013	4
A.04	Conference and Travel Approval/Ratification	5-8
A.05	Textbooks	9
A.06	Award of Contracts for Supplemental Educational Services (SES) Program Improvement – Title I Edison, John Muir, McKinley, and Will Rogers Elementary Schools	10-11
A.07	Approval of Special Education Contracts – 2013-2014	12-14

Business and Fiscal

A.08	Award of Purchase Orders – 2013-2014	15-15d
A.09	Acceptance of Gifts – 2013/2014	16-17

Facilities Improvement Projects

A.10	Contract Amendment #2 for Contract Extension for Two Relocatable Classroom Buildings to McGrath Rent Corporation (dba Mobile Modular Inc.) for Edison Language Academy – DSA Compliance (Close Out) Project – Measure BB	18
A.11	Contract Amendment #31 for Architectural/Engineering Design Services for Santa Monica High School Science and Technology Building and Site Improvement Project – R.L. Binder FAIA Architects, LLP – Measure BB	19-20
A.12	Amendment to Contract – lease Leaseback – John Adams Middle School – Replacement of Classroom Buildings E, F, & G, New Administration, Modernization & Site Improvements (Package 2B) – Swinerton Builders – Measure BB	21-22
A.13	Accept Work as Completed – Multiple Purchase Orders Projects – Measure BB	23

Personnel

A.14	Certificated Personnel – Elections, Separations.....	24-29
A.15	Classified Personnel – Merit	30-33
A.16	Classified Personnel – Non-Merit.....	34-35
A.17	Increase in Staffing (FTE) – Child Development Services	36
A.18	Reappointment of Personnel Commissioner Joseph Pertel.....	37

6:17 pm

XI. PUBLIC COMMENTS

Public Comments is the time when members of the audience may address the Board of Education on items not scheduled on the meeting's agenda. All speakers are limited to two (2) or three (3) minutes, depending on the number of speakers. The Brown Act (Government Code) states that Board members may not engage in discussion of issues raised during Public Comments, except to ask clarifying questions, make a brief announcement, make a brief report on his or her own activities, or to refer the matter to staff. This Public Comment section is limited to twenty (20) minutes. If the number of persons wishing to address the Board of Education exceeds the time limit, additional time will be provided in **Section XVI. CONTINUATION OF PUBLIC COMMENTS.**

- *Isaac Vandor and Cindy Vandor addressed the board regarding the ability to play on the Malibu High School water polo team in a CIF interschool-school agreement.*

DISCUSSION and MAJOR Items

As a general rule, items under DISCUSSION and MAJOR will be listed in an order determined by the President, Vice President, and Superintendent. Individual Board members may move to request a change in the order prior to consideration of any Major item. The Board may also move any of these items out of order to be heard earlier in the meeting if it appears that there is special interest by the public or as a courtesy to staff members making presentations to the Board.

XII. DISCUSSION ITEMS (45 minutes)

These items are submitted for discussion. Any action that might be required will generally be scheduled for the next regularly scheduled Board meeting.

8:49 pm

10:38 pm

D.01	Equity and Access for Student Success: Fall Update (30).....	38
D.02	Consider Adopting a Resolution in Support of Reforming Proposition 13 and Closing the Commercial Property Loophole (15).....	39-41

XIII. MAJOR ITEMS (20 minutes)

These items are considered to be of major interest and/or importance and are presented for action at this time. Some may have been discussed by the Board at a previous meeting.

10:46 pm

10:49 pm

A.19	Establish Position – Elementary Literacy Coach (15).....	42-45
A.20	Approve Charges for District Advisory Committees (DACs) – 2013-14 (5).....	46-47
	<i>Special Education DAC</i>	

XIV. INFORMATIONAL ITEMS (0 minutes)

These items are submitted for the public record for information. These items do not require discussion nor action.

10:53 pm

XV. BOARD MEMBER ITEMS

These items are submitted by individual board members for information or discussion, as per Board Policy 9322.

- *Mr. Allen announced that the New Heroes Celebration will be hosted by the Santa Monica Chamber of Commerce on Tuesday, October 22. Dr. Marcy will be recognized for his dedication to youth. He also mentioned that on October 30 at Santa Monica Public Library, a panel will host a discussion on four-year college access and affordability. Finally, he announced that a remake of Romeo and Juliet will be performed at the Laemmle Music Hall in Beverly Hills on Friday, Saturday, and Sunday.*

XVI. REQUESTS BY MEMBERS OF THE PUBLIC OR DISTRICT ADVISORY COMMITTEES TO ADDRESS THE BOARD OF EDUCATION

A member of the public may request that a matter within the jurisdiction of the board be placed on the agenda of a regular meeting, as per Board Policy 9322. The request shall be in writing and be submitted to the superintendent or designee with supporting documents and information, if any, at least one week before the scheduled meeting date. Items submitted less than a week before the scheduled meeting date may be postponed to a later meeting in order to allow sufficient time for consideration and research of the issue. The board president and superintendent shall decide whether a request is within the subject matter jurisdiction of the board. Items not within the subject matter jurisdiction of the board may not be placed on the agenda. In addition, the board president and superintendent shall determine if the item is merely a request for information or whether the issue is covered by an existing policy or administrative regulation before placing the item on the agenda.

XVII. CONTINUATION OF PUBLIC COMMENTS

A continuation of Section VIII, as needed. (If the number of persons wishing to address the Board of Education exceeds the time limit in section VIII, additional time will be provided in Section XVI, CONTINUATION OF PUBLIC COMMENTS.)

XVIII. BOARD MEMBER COMMENTS

A Board member may make a brief announcement or report on his/her own activities relative to Board business. There can be no discussion under "BOARD MEMBER COMMENTS."

XIX. FUTURE AGENDA ITEMS

Items for future consideration will be listed with the projected date of consideration. The Board of Education will be given any backup information available at this time.

XX. CLOSED SESSION

The Board of Education will, if appropriate, adjourn to Closed Session to complete discussion on items listed under Section III (Closed Session) following the regular business meeting.

XXI. ADJOURNMENT

It was moved by Mr. de la Torre, seconded by Mr. Patel, and voted 7/0 to adjourn the meeting at 10:58 p.m. in memory of Bill McCarthy, a Technical Advisor/Senior Construction Manager who was integral in many of the district's Measure BB projects, who passed away last weekend. The next regular board meeting is scheduled for 5:30 p.m. on **Thursday, November 7, 2013**, in the **Malibu City Council Chambers: 23825 Stuart Ranch Road, Malibu, CA.**

Approved: 11/7/13



President



Superintendent

Meetings held at the District Office and in Malibu are taped and rebroadcast in Santa Monica on CityTV2, Cable Channel 20 – Check TV listing.
Meetings are rebroadcast in Malibu on Government Access Ch. 3 every Saturday at 8pm.

SMMUSD Board of Education Meeting Schedule 2013-2014

Closed Session begins at 4:30pm
Public Meetings begin at 5:30pm

July through December 2013					
Month	1 st Thursday	2 nd Thursday	3 rd Thursday	4 th Thursday	Special Note:
July			7/18* DO	7/24* DO 7/30* DO	*7/18: Special Meeting *Wednesday, 7/24 *7/30: Special Meeting
August		8/14* DO		8/28* DO	*Wednesday, 8/14 First day of school: 8/22
September	9/5 DO		9/19 DO		*9/5: District Holiday
October	10/3 M		10/17 DO		
November	11/7 M		11/21 DO		Thanksgiving: 11/28-29
December		12/12 DO		winter break	
Winter Break: December 23 – January 3					
January through June 2014					
Winter Break: December 23 – January 3					
January	winter break	1/16 DO			
February	2/6 M		2/20 DO		
March	3/6 DO		3/20 M		
Spring Break: April 7-18					
April	4/3 DO	spring break	spring break		
May	5/1 M		5/15 DO		
June	6/5 DO			6/25* DO	Last day of school: 6/10 *Wednesday: 6/25

District Office (DO): 1651 16th Street, Santa Monica.
 Malibu City Council Chambers (M): 23815 Stuart Ranch Road, Malibu, CA

TO: BOARD OF EDUCATION
FROM: SANDRA LYON
RE: APPROVAL OF MINUTES

ACTION
10/17/13

RECOMMENDATION NO. A.01

It is recommended that the Board of Education approve the following Minutes:

October 3, 2013

MOTION MADE BY: Ms. Leon-Vazquez
SECONDED BY: Ms. Mechur
STUDENT ADVISORY VOTE: Aye
AYES: Five (5) (Ms. Lieberman, Ms. Leon-Vazquez, Mr. Mechur, Mr. Patel, and Mr. Allen)
NOES: None (0)
ABSTAIN: Two (2) (Dr. Escarce and Mr. de la Torre)

STUDY SESSION

TO: BOARD OF EDUCATION

STUDY SESSION

10/17/13

FROM: SANDRA LYON / DEBRA MOORE WASHINGTON

RE: ENROLLMENT AND STAFFING REPORT

STUDY SESSION ITEM NO. S.01

This discussion item is to allow the Board of Education to hear an update from staff regarding enrollment and staffing data at each site as of September 30, 2013.

The staffing process begins in February of each school year and continues through the spring and summer. It culminates around the third week of September. Human Resources staff confers with the school sites throughout this period to address staffing needs.

This report presents a general timeline for the staffing allocation process. It will also present enrollment data and provide details on class ratios. Additional data will be presented at the Study Session.

Ms. Washington's presentation can be found under Attachments at the end of these minutes.

Ms. Washington answered board members' questions regarding enrollment fluctuations from 2012/13 to 2013/14 at the various sites. She explained the decision process behind master scheduling and determining class sizes. Mr. Mechur requested data on the number of classes at John Adams Middle School that are at or above 33 students (in response to slide #27). Dr. Escarce wanted to know how many secondary teachers have requested to teach a sixth period. S. Lieberman requested a revised chart on slide #32 once the rebalancing at Santa Monica High School occurs. She recommended that senior staff examine how to reduce class sizes well in advance of budget preparation for the next school year.

CONSENT ITEMS

TO: BOARD OF EDUCATION

ACTION/CONSENT

10/17/13

FROM: SANDRA LYON / TERRY DELORIA / JANECE L. MAEZ / STUART SAM

RE: APPROVAL OF INDEPENDENT CONTRACTORS

RECOMMENDATION NO. A.02

It is recommended that the Board of Education enter into an agreement with the following Independent Contractors. These contracts are included in the 2013-2014 budget.

Contractor/ Contract Dates	Description	Site	Funding (Measure BB)
NONE			

Contractor/ Contract Dates	Description	Site	Funding
Dona-Rae Richwine 8/5/13 to 6/30/14 Not to exceed: \$12,000 (hourly rate: \$50) Amend contract total amount: \$17,000 (<i>\$12,000 was approved 7/24/13</i>)	To provide additional services to the Child Nutrition Services Department.	Child Development Services	\$12,000: 12-52101-0-85000- 31400-5802-070-2700 (Head Start Basic) \$5,000: 13-53100-0-00000- 3700-5802-057-2570
Law Offices of Bruce M. Lorman 8/1/13 7/1/13 to 6/30/14 Not to exceed: \$50,000	Legal counsel services – Proposed easement at 9th and Colorado Street property.	Business	01-00000-0-00000- 73000-5820-050-1500
Solution Tree 10/17/13 to 3/10/15 Not to exceed: \$90,000.50	PD Services – Transforming School Culture & K-12 Onsite PLC Training	Educational Services	01-74050-0-11100- 10000-5802-035-1300 (CCSS)
Family Services of Santa Monica 10/18/13 to 6/10/14 Not to exceed \$3,000	Provide counseling services to students K-2	Roosevelt	01-90150-0-11100- 10000-2917-007-1501 (PTA)

Ms. Maez made a correction to the contract start date for Mr. Lorman. Dr. Deloria explained the Solution Tree contract.

MOTION MADE BY: Mr. Mechur
SECONDED BY: Dr. Escarce
STUDENT ADVISORY VOTE: Aye
AYES: All (7)
NOES: None (0)

TO: BOARD OF EDUCATION
FROM: SANDRA LYON / TERRY DELORIA
RE: OVERNIGHT FIELD TRIP(S) 2013-2014

ACTION/CONSENT
10/17/13

RECOMMENDATION NO. A.03

It is recommended that the Board of Education approve the special field trip(s) listed below for students for the 2013-2014 school year. No child will be denied due to financial hardship.

School Grade # students	Destination Dates of Trip	Principal/ Teacher	Cost Funding Source	Subject	Purpose Of Field Trip
McKinley 5 th grade 87	Pali Institute Running Springs, CA 3/19/14-3/21/14	Irene Gonzalez- Castillo/ Marc Sanschagrin/ Hayde Cervantes	\$320 per student paid through parents and PTA	Science	To participate in an outdoor science-based program allowing students to touch, see and learn about the world around them.
Malibu High 9-12 th grades 52	Carnegie Hall New York, NY 3/6/14-3/10/14	Jerry Block/ Amy Loch	\$1800 per student by parent donation and fundraising	Choral Music	Heritage Festival, National Youth Choir Event

MOTION MADE BY: Mr. Mechur
SECONDED BY: Dr. Escarce
STUDENT ADVISORY VOTE: Aye
AYES: All (7)
NOES: None (0)

TO: BOARD OF EDUCATION

ACTION/CONSENT

10/17/13

FROM: SANDRA LYON / JANECE L. MAEZ / PAT HO

RE: CONFERENCE AND TRAVEL APPROVAL/RATIFICATION

RECOMMENDATION NO. A.04

It is recommended that the Board of Education approve/ratify the following Requests for Absence on District Business (Conference and Travel) forms.

COMMENTS: Entries are alphabetical, by employee last name. In addition to the employee's name and site/location, each entry contains the following information: name, location and date (s) of the conference, complete account code, fund and program names, and the total estimated cost as provided by the site administrator. The average cost for substitute teachers is \$130/day. This figure is furnished for informational purposes and does not reflect the actual amount paid for an individual substitute.)

<u>NAME</u> <u>SITE</u> Account Number Fund – Resource Number	CONFERENCE NAME LOCATION DATE (S)	COST ESTIMATE
<u>BRADFORD, Maureen</u> Ed Services 01-00000-0-19510-31600-5220-030-1300 General Fund- Function: Pupil Testing Services	Transitioning to UCU Assessments And Accountability Ontario, CA October 28, 2013	\$75
<u>CHECK, Laura</u> Adams Middle 01-00010-0-11100-10000-5220-011-4110 General Fund- Resource: Tier III	EDGY Embracing the Diversity of GLBTQ Youth and Families Los Angeles, CA November 13, 2013	\$130
<u>DUNCAN, Yeato</u> Roosevelt Elementary No Cost to District	Educator's Guide to Working with Mental Health Conditions Downey, CA September 18, 2013	\$0 +1 SUB
<u>GONZALEZ-CASTILLO, Irene</u> McKinley Elementary 01-90120-0-11100-10000-5220-004-4010 General Fund- Resource: Tier III	CAL Turn San Diego, CA September 13, 2013	\$75
<u>HAGEN, Marcia</u> Human Resources 01-00000-0-00000-74000-5220-025-1250 General Fund- Function: Personnel/Human Resources	Credential Analysts and Counselors of California Fall Conference Sacramento, CA October 16 - 18, 2013	\$1,100
<u>HERNANDEZ, Patricia</u> Adult Education 11-00000-0-41100-10000-5220-095-2950 Adult Education Fund- Function: Instruction	GED Statewide Annual Conference Sacramento, CA October 9, 2013	\$700

<u>KOVACH, Keith</u> Maintenance Department 01-81500-0-00000-81100-5220-061-2602 General Fund- Resource: Ongoing and Mayor Maint.	Aquatic Facility Certification Irvine, CA October 1 – 2, 2013	\$50
<u>LADUKE, Stacy</u> Adams Middle 01-00010-0-11100-10000-5220-011-4110 General Fund- Resource: Tier III	Suicide Prevention Content and Technology Training Los Angeles, CA September 17, 2013	\$12 Mileage Only
<u>LARIOS, Carmen</u> Human Resources 01-00000-0-00000-74000-5220-025-1250 General Fund- Function: Personnel/Human Resources	Unemployment Insurance Seminar Costa Mesa, CA October 9, 2013	\$100
<u>LYON, Sandra</u> District Office *PTA Paying*	President's Conference: "Connecting with PTA Builds Communities" Long Beach, CA October 9, 2013	\$0
<u>LYON, Sandra</u> District Office 01-00000-0-00000-71500-5220-020-1200 General Fund- Function: Superintendent	2014 Superintendent Symposium Monterrey, CA January 28 – 30, 2014	\$1,605
<u>LYTZ, Paula</u> Lincoln Middle 01-90150-0-11100-10000-5220-012-4120 General Fund- Resource: Reimbursed By PTA	Safe Schools: New School Administration Training Azusa, CA October 3, 2013	\$169
<u>LYTZ, Paula</u> Lincoln Middle 01-90150-0-11100-10000-5220-012-4120 General Fund- Resource: Reimbursed By PTA	From Intruders to Shooters: Safeguarding Our Schools Azusa, CA November 14, 2013	\$160
<u>MOJICA, Georgia</u> Edison Elementary 01-00010-0-11100-10000-5220-001-4010 General Fund- Resource: Tier III	Common Core Writing Conference Los Angeles, CA October 10, 2013	\$165 +1 SUB
<u>MORN, Lora</u> District Office 01-00000-0-11100-31400-5220-041-2400 General Fund- Function: Health Services	School Health Program Managers Meeting Downey, CA 9/27/13, 12/6/13, 3/13/14 and 5/16/14	\$100
<u>OCKNER, Sari</u> Franklin Elementary 01-65000-0-50010-21000-5220-043-1400 General Fund- Resource: Special Education	Summit 2013, Advances and Best Practices In Autism Los Angeles, CA October 25 – 26, 2013	\$160
<u>PEREZ, Ray</u> Lincoln Elementary 01-00010-0-11100-10000-5220-012-4120 General Fund- Resource: Tier III	AVID 1 st Year Coordinator Support Workshop Downey, CA 10/16/13 & 1/16/14	\$400

<u>POPOVICH, Judy</u> Human Resources 01-00000-0-00000-74000-5220-025-1250 General Fund- Function: Human Resources/Personnel	HRS District Training-Introduction to HRS Downey, CA October 8, 2013	\$30 Mileage Only
<u>SAM, Stuart</u> FIP Office/Washington South 83-90500-0-00000-85000-5220-050-2600 Measure BB Fund- Resource: BB Construction	C.A.S.H. The Construction Inspector Card: A Progress Report on Implementation Ontario, CA September 27, 2013	\$500
<u>WEBB, Suzanne</u> Lincoln Middle 01-00010-0-11100-10000-5220-012-4120 General Fund- Resource: Tier III	CAL Turn-Consortium for Education Change San Diego, CA September 13 – 14, 2013	\$75

Adjustments (Preapproved expenses 10% in excess of approved costs that must be approved by Board/Changes in Personnel Attendance)		
<u>KAMIBAYASHI, Terry</u> Maintenance 01-81500-0-00000-81100-5220-061-2602 General Fund- Resource: Ongoing/Major Maintenance	Playground Safety Inspector Certification Ventura, CA September 9, 2013	\$210

Group Conference and Travel: In-State * a complete list of conference participants is on file in the Department of Fiscal Services		
<u>DELORIA, Terry</u> <u>ROMAN, Bertha</u> Ed Services 01-00000-0-19600-21000-5220-030-1300 General Fund- Function: Supervision of Instruction	Education Technology Leadership Network Downey, CA September 25, 2013	\$30 Mileage Only
<u>DELORIA, Terry</u> +3 Additional Staff Ed Services 01-74050-0-11100-10000-5220-035-1300 General Fund- Resource: Common Core	Curriculum and Instruction Steering Committee Leadership Symposium Monterrey, CA February 18 – 21, 2014	\$4,800
<u>GONZALEZ-CASTILLO, Irene</u> +2 Additional Staff Ed Services 01-74050-0-11100-10000-5220-035-1300 General Fund- Resource: Common Core	ACSA Curriculum Instructional Leaders Academy 9/27/13 through 5/17/14 (16 Sessions)	\$6,400
<u>GONZALEZ-CASTILLO, Irene</u> +2 Additional Staff Ed Services 01-74050-0-11100-10000-5220-035-1300 General Fund- Resource: Common Core	Literacy Leaders Collaborative 2013- 2014 Downey, CA 10/14/13, 1/13/14 and 4/21/14	\$265 Mileage Only

<u>MORN, Lora</u> +5 Additional Staff District Office 01-00000-0-11100-31400-5220-041-2400 General Fund- Function: Health Services	Back to School: Healthy Minds, Healthy Bodies San Diego, CA October 5, 2013	\$180
<u>RAJUBALI, Jahan</u> <u>SHEKTMEYSTER, Zhranna</u> Adams Middle	Do this, Not That Downey, CA September 18, 2013	\$0 +1 SUB
<u>TRUNDLE, Al</u> +10 Additional Staff Santa Monica High 01-00010-0-11100-10000-5220-015-4150 General Fund- Resource: Tier III	NCAA Intensive Workshop Los Angeles, CA October 22, 2013	\$500

Out-of-State Conferences: Individual

--	--	--

Out-of-State Conferences: Group

NONE		
------	--	--

MOTION MADE BY: Mr. Mechur
SECONDED BY: Dr. Escarce
STUDENT ADVISORY VOTE: Aye
AYES: All (7)
NOES: None (0)

TO: BOARD OF EDUCATION
FROM: SANDY LYON / TERRY DELORIA
RE: TEXTBOOKS

ACTION/CONSENT
10/17/13

RECOMMENDATION NO. A.04

It is recommended that the textbooks listed below be adopted for the Santa Monica-Malibu Unified School District.

COMMENT: In accordance with the Board of Education policy, the textbook(s) listed below have been on public display for the past two weeks in the Educational Services Department at 1638 17th Street, Santa Monica, CA 90405.

Temas AP[®] Spanish Language and Culture by Parthena Draggett, Cole Conlin, Max Ehrsam, Elizabeth Millán, for grades 11-12, Advance Placement Spanish, at Malibu High and Santa Monica High. Adoption requested by Kimberly Auer, Claudia Bautista and Heather Wethern.

AP[®] Spanish Language and Culture Exam Preparation by Jorge Frisancho, María T. Redmon, Marta Lucía Restrepo Bravo for grades 11-12 Advance Placement Spanish at Malibu High and Santa Monica High School. Adoption requested by Kimberly Auer, Claudia Bautista and Heather Wethern.

MOTION MADE BY: Mr. Mechur
SECONDED BY: Dr. Escarce
STUDENT ADVISORY VOTE: Aye
AYES: All (7)
NOES: None (0)

TO: BOARD OF EDUCATION

ACTION/CONSENT

10/17/13

FROM: SANDRA LYON / TERRY DELORIA / MAUREEN BRADFORD

RE: AWARD OF CONTRACTS FOR SUPPLEMENTAL EDUCATIONAL SERVICES (SES) PROGRAM IMPROVEMENT – TITLE I EDISON, JOHN MUIR, MCKINLEY, AND WILL ROGERS ELEMENTARY SCHOOLS

RECOMMENDATION NO. A.06

It is recommended that the Board of Education approve contracts for Supplemental Educational Services (SES) Program Improvement for Edison, John Muir, McKinley and Will Rogers students to vendors as listed below, not to exceed \$646.50 per student.

Funding Information

Budgeted: Yes

Fund/Source: General Fund

Account Number: 01-30100-0-11100-10000-5802-035-1300

Description: Title I

Schools that receive Title I funding under ESEA/NCLB are subject to Program Improvement status when one or more criteria for Adequate Yearly Progress is missed for two consecutive years. When a school is in its second year or more of Program Improvement, the district must offer Supplemental Educational Services (SES) to eligible students. Eligible students are those who participate in the National School Lunch Program. SES is provided by vendors that have been approved by the State Board of Education to provide tutoring to students outside of the school day.

There are 90 agencies on the state-approved list for our area. Of these, 29 attended an SMMUSD vendor orientation and 19 submitted comprehensive proposals to provide services to our students. Proposal requirements included a description of services, certificates of insurance, W-9s, verification of background checks and TB testing, description of licenses, credentials and/or training, and copies complaint procedures, child abuse and missing persons reporting procedures.

Each vendor determines its hourly rate for services, the instructional materials used for tutoring, and the method of assessing and monitoring student progress. The state has set a maximum of \$646.50 per student for SES in our district for the 2013-14 school year. The district is required to set aside 20% of Title I funds to pay for SES and transportation costs associated with School Choice. Should the demand for SES and Choice exceed the 20% set aside, the district will give priority for SES to the lowest achieving eligible students.

Per ESEA/NCLB, families have the right to select the vendor of their choice. Families of eligible students at Edison, John Muir, McKinley, and Will Rogers Learning Community were notified of the opportunity for SES through a mailing that went home on August 29, a vendor night held at the Professional Development and Learning Center on September 24, and through communications from the school principal and teachers. Families were provided with a list of the 19 agencies that submitted comprehensive SES proposals to SMMUSD along with a description of their services, their hourly rate for services, and their contact information.

Based on family selection of vendors, Santa Monica-Malibu Unified School District proposes to enter into contract with nineteen vendors. Vendors will submit monthly attendance and progress reports to Educational Services for each child receiving SES, along with a monthly invoice for services rendered.

SES

Title I: 01-30100-0-11100-10000-5802-035-1300

SES Vendor	# of Students Requesting SES from Vendor	Service Description	Contract Number	Cost not to Exceed \$646.50 per Student
! # 1 Touch-Screen Tablet Computer Tutoring	2	SES	UC14030	1,292.40
! ACE Tutoring Services	6	SES	UC14032	3,879.00
!!!1 st Choice Android Smart-Phone Tutoring	2	SES	UC14033	1,292.40
!A+CAT (Computer Assisted Tutoring)	13	SES	UC14034	8,404.50
#1 We Can Querer es Poder with Nook Tablets!/ ! # 1 Tutoria, Maestros, Tabletass	52	SES	UC14035	33,618.00
A Better Tomorrow	4	SES	UC14036	2,586.00
Alpha Learning Centers LLC, DBA Sylvan Learning Center, Santa Monica	51	SES	UC14037	32,971.50
Alternatives Unlimited, Inc.	8	SES	UC14038	5,172.00
Basic Educational Services Team, Inc.	6	SES	UC14039	3,879.00
Club Z! In Home Tutoring Services	18	SES	UC14040	11,637.00
Community College Foundation	9	SES	UC14041	5,818.50
Doctrina Tutoring	1	SES	UC14042	646.50
ETS Educational & Tutorial Services LLC	12	SES	UC14043	7,758.00
¡Alpha! Innovation through Education	36	SES	UC14044	23,274.00
Total Education Solutions	8	SES	UC14047	5,172.00
UROC Learning Institute	21	SES	UC14048	13,576.50
Total Cost Not to Exceed				\$160,977.30

MOTION MADE BY: Mr. Mechur
 SECONDED BY: Dr. Escarce
 STUDENT ADVISORY VOTE: Aye
 AYES: All (7)
 NOES: None (0)

TO: BOARD OF EDUCATION

ACTION/CONSENT

10/17/13

FROM: SANDY LYON / TERRY DELORIA / SARA WOOLVERTON

RE: APPROVAL OF SPECIAL EDUCATION CONTRACTS – 2013-2014

RECOMMENDATION NO. A.07

It is recommended that the Board of Education approve the following Special Education Contracts for fiscal year 2013-2014 as follows:

NPS

2013-2014 Budget 01-65000-0-57500-11800-5125-043-1400

2013-2014 Budget 01-65120-0-57500-31400-5890-043-1400

Nonpublic School	SSID	Service Description	Contract Number	Cost Not to Exceed
Westview School	9103197431	NPS	29-SPED14040	\$36,442
Westview School	5103129712	NPS	30-SPED14041	\$29,647
Westview School	9103131371	NPS	32-SPED14048	\$34,342
Westview School	8103149278	NPS	34-SPED14051	\$37,442
Westview School	9061749551	NPS	35-SPED14052	\$31,538
Westview School	2119528495	NPS	38-SPED14056	\$34,342
Westview School	2169575965	NPS	39-SPED14057	\$34,342
Vista School	7103107956	NPS	31-SPED14047	\$28,466
Vista School	7750034324	NPS	40-SPED14058	\$33,638
Vista School	2149511275	NPS	41-SPED14059	\$37,588
Echo Horizon	9344198531	NPS	33-SPED14049	\$27,653
Heritage School	2042683637	NPS	36-SPED14053	\$1,200
Casa Pacifica	8103127678	NPS	5-SPED14012	\$16,426

Amount Budgeted NPS 13/14		\$ 1,700,000
Amount Budgeted Mental Health Services 13/14		\$ 900,000
Total Budgeted		\$ 2,600,000
Prior Board Authorization as of 10/3/13		\$ 846,709
	Balance	\$ 1,753,291
Positive Adjustment (See Below)		\$ 2,955
		\$ 1,756,246
Total Amount for these Contracts		\$ 383,066
	Balance	\$ 1,373,180

Adjustment					
NPS Budget 01-65000-0-57500-11800-5125-043-1400					
There has been a reduction in authorized expenditures of NPS/NPA contracts for FY 2013-2014 in the amount of \$0 as of 10/3/13					
NPS	Service Description	Contract Number	Reduce (R) Eliminate (E)	Adjusted Amount	Comment
Summit View West (Help Group)	NPS	10-SPED14022	R	\$2,955	

NPA

2013-2014 Budget 01-65000-0-57500-11800-5126-043-1400

Nonpublic Agency	SSID	Service Description	Contract Number	Cost Not to Exceed
AMN Healthcare	Various	OT Services	37-SPED14055	\$26,180

Amount Budgeted NPA 13/14		\$	647,000
Prior Board Authorization as of 10/3/13		\$	760,184
	Balance	\$	-113,184
Positive Adjustment (See Below)		\$	0
		\$	-113,184
Total Amount for these Contracts		\$	26,180
	Balance	\$	-139,364

Adjustment					
NPA Budget 01-65000-0-57500-11800-5126-043-1400					
There has been a reduction in authorized expenditures of NPS/NPA contracts for FY 2013-2014 in the amount of \$0 as of 10/3/13					
NPA	Service Description	Contract Number	Reduce (R) Eliminate (E)	Adjusted Amount	Comment

Instructional Consultants

2013-2014 Budget 01-65000-0-57500-11900-5802-043-1400

Instructional Consultant	SSID	Service Description	Contract Number	Cost Not to Exceed

Amount Budgeted Instructional Consultants 13/14		\$	447,000
Prior Board Authorization as of 10/3/13		\$	199,724
	Balance	\$	305,776
Positive Adjustment (See Below)		\$	0
		\$	305,776
Total Amount for these Contracts		\$	0
	Balance	\$	305,776

Adjustment					
Instructional Consultants Budget 01-65000-0-57500-11900-5802-043-1400					
There has been a reduction in authorized expenditures of Instructional Consultants contracts for FY 2013-2014 in the amount of \$0 as of 10/3/13					
Instructional Consultant	Service Description	Contract Number	Reduce (R) Eliminate (E)	Adjusted Amount	Comment

Non-Instructional Consultants

2013-2014 Budget 01-65000-0-57500-11900-5890-043-1400

Non-Instructional Consultant	SSID	Service Description	Contract Number	Cost Not to Exceed

Amount Budgeted Non-Instructional Consultants 13/14		\$	150,000
Prior Board Authorization as of 10/3/13		\$	173,120
	Balance	\$	-23,120
Positive Adjustment (See Below)		\$	0
		\$	-23,120
Total Amount for these Contracts		\$	0
	Balance	\$	-23,120

Adjustment					
Non-Instructional Consultants Budget 01-65000-0-57500-11900-5890-043-1400					
There has been a reduction in authorized expenditures of Non-Instructional Consultants contracts for FY 2013-2014 in the amount of \$0 as of 10/3/13					
Non- Instructional Consultant	Service Description	Contract Number	Reduce (R) Eliminate (E)	Adjusted Amount	Comment

Legal

2013-2014 Budget 01-65000-0-57500-11900-5820-043-1400

Legal Contractor	Service Description	Contract Number	Cost Not to Exceed

Amount Budgeted Legal Services 13/14		\$ 300,000
Prior Board Authorization as of 10/3/13		<u>250,000</u>
	Balance	\$ 0
Adjustments for this period		<u>\$ 0</u>
		\$ 0
Total Amount for these Contracts		<u>\$ 0</u>
	Balance	\$ 50,000

Adjustment				
Legal Services Budget 01-65000-0-57500-11900-5820-043-1400				
There has been a reduction in authorized expenditures of Legal Services contracts for FY 2013-2014 in the amount of \$ 0 as of 10/3/13				
Legal Contractor	Contract Number	Reduce (R) Eliminate (E)	Adjusted Amount	Comment

COMMENT: According to the Education Code SEC.21 Section 56342, prior to recommending a new or continued placement in a non-public, non-sectarian school, the Individualized Education Program (IEP) Team must submit the proposed recommendation to the local governing board for its review and recommendation regarding the cost of such placement.

The recommendations for these severely handicapped students are made by the District IEP Teams in accordance with State and Federal laws. The mandates of IDEA require non-public school services be provided at no expense to parents if there is not an appropriate public school program available. Funding to come from a SELPA-wide non-public school/non-public agency reserve account.

MOTION MADE BY: Mr. Mechur
 SECONDED BY: Dr. Escarce
 STUDENT ADVISORY VOTE: Aye
 AYES: All (7)
 NOES: None (0)

TO: BOARD OF EDUCATION

ACTION/CONSENT

10/17/13

FROM: SANDRA LYON / JANECE L. MAEZ / VIRGINIA I. HYATT

RE: AWARD OF PURCHASE ORDERS – 2013-14

RECOMMENDATION NO. A.08

It is recommended that the Board of Education approve the following Purchase Orders and Changed Purchase Orders from September 23, 2013, through October 9, 2013, for fiscal /14.

MOTION MADE BY: Mr. Mechur
SECONDED BY: Dr. Escarce
STUDENT ADVISORY VOTE: Aye
AYES: All (7)
NOES: None (0)

SANTA MONICA-MALIBU UNIFIED SCHOOL DISTRICT
PURCHASE ORDERS TO BE APPROVED AT THE BOARD MEETING OF OCTOBER 17, 2013

PAGE 1

U-GENERAL FUND, UNRESTRICTED R-GENERAL FUND, RESTRICTED A-ADULT ED CD-CHILD DEVELOPMENT F-CAFETERIA
SF-SPECIAL FINANCING (FLEX) BB,X-BONDS D-DEVELOPER FEES SR-SPECIAL RESERVE CAPITAL
DF-DEFERRED MAINTENANCE SM-STATE MODERNIZATION

PO NO.	VENDOR	DESCRIPTION	LOCATION	AMOUNT	
*** NEW PURCHASE ORDERS ***					
141459	A-Z BUS SALES INC	INSTALLING ESW THERMACAT	TRANSPORTATION	133,351.00	R
141955	ABLENET	LIFE SKILLS SUPPLIES	SPECIAL EDUCATION REGULAR YEAR	10,463.58	R
141827	ACCO BRANDS USA LLC DBA GBC	LAMINATING PLASTIC/ADMIN	JOHN ADAMS MIDDLE SCHOOL	153.67	U
141943	AMECI PIZZA & PASTA	FOOD-YOUNG COLLEGIANS	CURRICULUM AND IMC	375.00	R
141761	AMERITEL INC	Maint. Agreement - Surv. Trans	TRANSPORTATION	1,916.00	R
141846	APPLE COMPUTER CORP	CLASSROOM/IT EQUIPMENT	WILL ROGERS ELEMENTARY SCHOOL	108.41	R
141856	APPLE COMPUTER CORP	VGA ADAPTERS	CURRICULUM AND IMC	285.80	R
141860	APPLE COMPUTER CORP	COMPUTERS FOR ADMIN/PERMIT	JOHN ADAMS MIDDLE SCHOOL	3,413.91	R
142017	APPLE COMPUTER CORP	ASSISTIVE TECHNOLOGY	SPECIAL EDUCATION REGULAR YEAR	648.41	R
142019	APPLE COMPUTER CORP	SPEECH THERAPY APPS	SPECIAL EDUCATION REGULAR YEAR	500.00	R
142011	ART SUPPLY WAREHOUSE	ART SUPPLIES	SANTA MONICA HIGH SCHOOL	164.25	R
141977	ATLANTIC EXPRESS OF LA INC	TRANSPORTATION	SANTA MONICA HIGH SCHOOL	1,006.25	U
141769	AVON CAR RENTAL	CAR AND VAN RENTAL	R O P	1,000.00	R
141637	B & H PHOTO VIDEO	PORTABLE SOUND SYSTEM	MCKINLEY ELEMENTARY SCHOOL	2,780.82	R
141669	B & H PHOTO VIDEO	ART SUPPLIES	SANTA MONICA HIGH SCHOOL	221.57	R
141872	B & H PHOTO VIDEO	IT SUPPLIES	WILL ROGERS ELEMENTARY SCHOOL	141.91	R
141910	B & H PHOTO VIDEO	CAMERA	LINCOLN MIDDLE SCHOOL	343.36	R
142047	BALLROOM MADNESS	BALLROOM DANCE CONTRACT	EDISON ELEMENTARY SCHOOL	5,000.00	R
142048	BALLROOM MADNESS	BALLROOM DANCE CONTRACT	ROOSEVELT ELEMENTARY SCHOOL	10,000.00	R
142014	BARNES & NOBLE/SANTA MONICA	INSTRUCTIONAL SUPPLIES	MCKINLEY ELEMENTARY SCHOOL	311.68	R
141986	BOX-N-GO LLC	STORAGE CONTAINER	EDISON ELEMENTARY SCHOOL	1,579.00	BB
141741	CALIFORNIA OFFICE SYSTEMS INC	TESTING SUPPLIES	SANTA MONICA HIGH SCHOOL	1,105.51	R
141925	CALIFORNIA OFFICE SYSTEMS INC	OFFICE SUPPLIES - BTS	PERSONNEL SERVICES	1,000.00	U
141979	CALIFORNIA OFFICE SYSTEMS INC	WHITEBOARD/TACKBOARD: ROOM 206	WILL ROGERS ELEMENTARY SCHOOL	1,361.09	U
141992	CALIFORNIA OFFICE SYSTEMS INC	CLASSROOM SUPPLIES	OLYMPIC CONTINUATION SCHOOL	300.00	R
141996	CALIFORNIA OFFICE SYSTEMS INC	LIBRARY SUPPLIES	SANTA MONICA HIGH SCHOOL	461.74	U
142024	CALIFORNIA OFFICE SYSTEMS INC	Open Order for School/office	FRANKLIN ELEMENTARY SCHOOL	2,000.00	U
142034	CALIFORNIA OFFICE SYSTEMS INC	OFFICE SUPPLIES	SANTA MONICA HIGH SCHOOL	5,000.00	U
142074	CALIFORNIA OFFICE SYSTEMS INC	OPEN ORDER/ATTENDANCE OFF SUP	JOHN ADAMS MIDDLE SCHOOL	200.00	U
142029	CANON SOLUTIONS AMERICA INC	COPIER MAINTENANCE AGREEMENT	JOHN ADAMS MIDDLE SCHOOL	360.00	BB
142030	CANON SOLUTIONS AMERICA INC	COPER OVERAGES	JOHN ADAMS MIDDLE SCHOOL	800.00	BB
142031	CANON SOLUTIONS AMERICA INC	COPIER OVERAGES	MALIBU HIGH SCHOOL	800.00	BB
141843	CANON SOLUTIONS AMERICA INC.	COPY OVERAGES	JOHN MUIR ELEMENTARY SCHOOL	144.42	U
141937	CANON SOLUTIONS AMERICA INC.	COPIER OVERAGES	OLYMPIC CONTINUATION SCHOOL	672.96	R
141990	CDW-G COMPUTING SOLUTIONS	COMPUTER SUPPLIES	R O P	302.77	R
141916	CHENG & TSUI COMPANY INC	TEXTBOOKS	SANTA MONICA HIGH SCHOOL	290.31	R
142122	COMMUNITY PLAYTHINGS	INSTRUCTIONAL	CHILD DEVELOPMENT CENTER	438.00	CD
141802	CRESTLINE	STAFF AND PARENTS	OLYMPIC CONTINUATION SCHOOL	914.40	R
142043	DELORIA, TERRY	INSERVICE SUPPLIES	STATE AND FEDERAL PROJECTS	288.61	R
142003	DEMCO INC	LIBRARY SUPPLIES	SANTA MONICA HIGH SCHOOL	67.71	U
141842	DICK BLICK	ART SUPPLIES	SANTA MONICA HIGH SCHOOL	592.41	R
141849	DICK BLICK - PICK UP ONLY	INSTRUC SUP/GIFT/VISUAL ARTS	JOHN ADAMS MIDDLE SCHOOL	1,000.00	R
141697	DISCOUNT SCHOOL SUPPLY	INSTRUCTIONAL SUPPLIES	CHILD DEVELOPMENT CENTER	290.93	CD
141699	DISCOUNT SCHOOL SUPPLY	INSTRUCTIONAL SUPPLIES	CHILD DEVELOPMENT CENTER	185.20	CD
141701	DISCOUNT SCHOOL SUPPLY	INSTRUCTIONAL SUPPLIES	CHILD DEVELOPMENT CENTER	248.97	CD
141747	DISCOUNT SCHOOL SUPPLY	INSTRUCTIONAL	CHILD DEVELOPMENT CENTER	229.69	CD
141748	DISCOUNT SCHOOL SUPPLY	INSTRUCTIONAL	CHILD DEVELOPMENT CENTER	221.49	CD
141749	DISCOUNT SCHOOL SUPPLY	INSTRUCTIONAL	CHILD DEVELOPMENT CENTER	251.77	CD

SANTA MONICA-MALIBU UNIFIED SCHOOL DISTRICT
PURCHASE ORDERS TO BE APPROVED AT THE BOARD MEETING OF OCTOBER 17, 2013

PAGE 2

U-GENERAL FUND, UNRESTRICTED R-GENERAL FUND, RESTRICTED A-ADULT ED CD-CHILD DEVELOPMENT F-CAFETERIA
SF-SPECIAL FINANCING (FLEX) BB,X-BONDS D-DEVELOPER FEES SR-SPECIAL RESERVE CAPITAL
DF-DEFERRED MAINTENANCE SM-STATE MODERNIZATION

PO NO.	VENDOR	DESCRIPTION	LOCATION	AMOUNT	
141750	DISCOUNT SCHOOL SUPPLY	INSTRUCTIONAL	CHILD DEVELOPMENT CENTER	315.64	CD
141751	DISCOUNT SCHOOL SUPPLY	INSTRUCTIONAL	CHILD DEVELOPMENT CENTER	286.12	CD
141773	DISCOUNT SCHOOL SUPPLY	INSTRUCTIONAL SUPPLIES	CHILD DEVELOPMENT CENTER	459.62	CD
141805	DISCOUNT SCHOOL SUPPLY	INSTRUCTIONAL	CHILD DEVELOPMENT CENTER	125.85	CD
141947	DISCOUNT SCHOOL SUPPLY	INSTRUCTIONAL SUPPLIES	CHILD DEVELOPMENT CENTER	200.12	CD
141953	DISCOUNT SCHOOL SUPPLY	INSTRUCTIONAL SUPPLIES	CHILD DEVELOPMENT CENTER	263.68	CD
141954	DISCOUNT SCHOOL SUPPLY	INSTRUCTIONAL ITEMS	CHILD DEVELOPMENT CENTER	149.88	CD
141438	DISCOVERY EDUCATION	LICENSE AGREEMENT	CURRICULUM AND IMC	2,570.00	R
141841	DURHAM SCHOOL SERVICES	BUS TRANSPORTATION	PT DUME ELEMENTARY SCHOOL	1,975.00	R
141734	ECKHARTS TRAILER HITCH &	OPERATIONS VEHICLES REPAIR	GROUNDS MAINTENANCE	3,500.00	R
141361	FAKOURI ELECTRICAL ENGINEERING	UPS UNIT	INFORMATION SERVICES	8,305.50	U
141874	FLOCABULARY LLC	INSTRU SUP/8TH TEAM	JOHN ADAMS MIDDLE SCHOOL	68.99	U
141879	FOLLETT EDUCATIONAL SERVICES	LIT TXT BK	CURRICULUM AND IMC	1,080.60	U
141880	FOLLETT EDUCATIONAL SERVICES	SCI TXT BK	CURRICULUM AND IMC	961.57	U
141930	FOLLETT EDUCATIONAL SERVICES	TEXTBOOKS	SANTA MONICA HIGH SCHOOL	5,964.47	R
142115	FOLLETT EDUCATIONAL SERVICES	FORIEGN LANG TEXTBOOKS	CURRICULUM AND IMC	28,943.05	U
141968	FOLLETT LIBRARY BOOK CO	Library books	ROOSEVELT ELEMENTARY SCHOOL	398.00	R
142041	FOLLETT LIBRARY BOOK CO	BOOKS FOR LIBRARY	FRANKLIN ELEMENTARY SCHOOL	362.11	U
141557	GALE SUPPLY CO	SAFETY MATS	CHILD DEVELOPMENT CENTER	308.80	CD
141653	GALE SUPPLY CO	CUSTODIAL SUPPLIES	MCKINLEY ELEMENTARY SCHOOL	2,898.95	U
141776	GALE SUPPLY CO	CUSTODIAL	CHILD DEVELOPMENT CENTER	523.79	CD
141817	GALE SUPPLY CO	CUSTODIAL SUPPLIES	GRANT ELEMENTARY SCHOOL	936.99	U
141834	GALE SUPPLY CO	CUSTODIAL SUPPLIES	JOHN MUIR ELEMENTARY SCHOOL	60.23	R
141876	GALE SUPPLY CO	CUSTODIAL SUPPLIES/PERMIT	JOHN ADAMS MIDDLE SCHOOL	511.91	R
141967	GALE SUPPLY CO	LIBRARY SUPPLIES	WILL ROGERS ELEMENTARY SCHOOL	64.44	R
141980	GALE SUPPLY CO	CUSTODIAL SUPPLIES	OLYMPIC CONTINUATION SCHOOL	1,105.35	R
141999	GALE SUPPLY CO	Custodial Supplies	CABRILLO ELEMENTARY SCHOOL	1,025.94	U
142123	GALE SUPPLY CO	CUSTODIAL	CHILD DEVELOPMENT CENTER	421.58	CD
141759	GALLS/QUARTERMASTER	UNIFORMS	LINCOLN MIDDLE SCHOOL	449.37	R
141903	GALLS/QUARTERMASTER	SECURITY UNIFORMS	SANTA MONICA HIGH SCHOOL	200.32	U
141919	GALLS/QUARTERMASTER	SECURITY UNIFORMS	SANTA MONICA HIGH SCHOOL	206.88	U
141904	GETCONNECT	WEBINAR LICENSE	STATE AND FEDERAL PROJECTS	1,374.00	R
141624	GLENCOE/MACMILLAN/MCGRAW-HILL	SCIENCE TEXTBOOKS	OLYMPIC CONTINUATION SCHOOL	501.47	U
142028	GREENFIELD LEARNING INC	Lexia Reading Program	CABRILLO ELEMENTARY SCHOOL	540.00	U
142097	HEARTLAND PAYMENT SYSTEM	ANNUAL MAINTENANCE	FOOD SERVICES	5,070.00	F
142022	HELLAS CONSTRUCTION INC.	TRACK REPAIR	SANTA MONICA HIGH SCHOOL	950.00	R
142078	HILLYARD FLOOR CARE SUPPLY	OPEN ORDER CUSTODIAL SUPPLIES	FACILITY OPERATIONS	250.00	U
142125	HILLYARD FLOOR CARE SUPPLY	OPERATIONS CUSTODIAL SUPPLIES	FACILITY OPERATIONS	4,361.70	U
141931	HOUGHTON MIFFLIN HARCOURT	TEXTBOOKS	SANTA MONICA HIGH SCHOOL	600.00	R
140998	INTELLI-TECH	COMPUTERS FOR FACILITY USE	THEATER OPERATIONS&FACILITY PR	2,523.14	R
141794	INTELLI-TECH	COMPUTER EQUIPMENT	CURRICULUM AND IMC	3,684.25	U
142092	INTELLI-TECH	LAPTOP FOR FOOTBALL COACH	MALIBU HIGH SCHOOL	1,567.62	R
141366	INTERNATIONAL PAPER	PAPER	MCKINLEY ELEMENTARY SCHOOL	2,000.00	R
141848	INTERNATIONAL PAPER	COPIER PAPER	PT DUME ELEMENTARY SCHOOL	1,262.68	R
141871	INTERNATIONAL PAPER	PAPER	WILL ROGERS ELEMENTARY SCHOOL	2,500.00	R
141909	INTERNATIONAL PAPER	COPY PAPER	SANTA MONICA HIGH SCHOOL	441.29	U
141923	INTERNATIONAL PAPER	OFFICE SUPPLIES	PERSONNEL SERVICES	247.13	U
142005	JOHNSTON, CINDY	REIMBURSEMENT	MCKINLEY ELEMENTARY SCHOOL	375.00	U
142006	JOHNSTON, CINDY	REIMBURSEMENT	MCKINLEY ELEMENTARY SCHOOL	300.00	R
141985	JOSEPHSON INSTITUTE OF ETHICS	CHARACTER COUNTS MATERIALS	GRANT ELEMENTARY SCHOOL	45.40	R

SANTA MONICA-MALIBU UNIFIED SCHOOL DISTRICT
PURCHASE ORDERS TO BE APPROVED AT THE BOARD MEETING OF OCTOBER 17, 2013

PAGE 3

U-GENERAL FUND, UNRESTRICTED R-GENERAL FUND, RESTRICTED A-ADULT ED CD-CHILD DEVELOPMENT F-CAFETERIA
SF-SPECIAL FINANCING (FLEX) BB,X-BONDS D-DEVELOPER FEES SR-SPECIAL RESERVE CAPITAL
DF-DEFERRED MAINTENANCE SM-STATE MODERNIZATION

PO NO.	VENDOR	DESCRIPTION	LOCATION	AMOUNT	
141783	JW PEPPER OF LOS ANGELES	OPEN PO: MUSIC SUPPLIES	LINCOLN MIDDLE SCHOOL	3,000.00	R
141784	JW PEPPER OF LOS ANGELES	OPEN PO:SHEET MUSIC ORCHESTRA	LINCOLN MIDDLE SCHOOL	3,000.00	R
142070	JW PEPPER OF LOS ANGELES	OPEN ORDER/SUP/GIFT-VOCAL MUS	JOHN ADAMS MIDDLE SCHOOL	500.00	R
142073	JW PEPPER OF LOS ANGELES	OPEN ORDER/GIFT/INST MUSIC	JOHN ADAMS MIDDLE SCHOOL	4,000.00	R
141824	KERN HIGH SCHOOL DISTRICT	SIMULATION REGISTRATION FEE	R O P	1,000.00	R
141831	KERN HIGH SCHOOL DISTRICT	VIRTUAL TRADE FAIR	R O P	435.00	R
141678	KORADE & ASSOCIATE BUILDERS	REPLACEMENT BLINDS	CHILD DEVELOPMENT CENTER	2,361.00	CD
141946	LAKESHORE	OPEN ORDER/INSTRUCTIONAL	CHILD DEVELOPMENT CENTER	105.00	CD
141952	LAKESHORE	OPEN ORDER/INSTRUCTIONAL	CHILD DEVELOPMENT CENTER	115.00	CD
141959	LAKESHORE	CLASSROOM SUPP. NEW TEACHER	SPECIAL EDUCATION REGULAR YEAR	227.90	R
141971	LAKESHORE	INSTRUCTIONAL SUPPLIES: TK	WILL ROGERS ELEMENTARY SCHOOL	1,950.50	U
142040	LAKESHORE	INSTRUCTIONAL SUPPLIES: TK	WILL ROGERS ELEMENTARY SCHOOL	184.24	U
141806	LAKESHORE CURRICULUM	INSTRUCTIONAL SUPPLIES	CHILD DEVELOPMENT CENTER	202.18	CD
141965	LAKESHORE CURRICULUM	INSTRUCTIONAL SUPPLIES: PBS	SPECIAL EDUCATION REGULAR YEAR	819.89	R
142008	LAKESHORE CURRICULUM	CLASSROOM SUPPLIES	MCKINLEY ELEMENTARY SCHOOL	204.83	U
141921	LAVI INDUSTRIES	3 SIGN FRAMES	THEATER OPERATIONS&FACILITY PR	202.81	R
141935	LEAF SPRINT SUPPLY	Bus Repairs/Transportation	TRANSPORTATION	1,000.00	R
142046	LEE & LOW BOOKS INC.	TC materials 4 Franklin 1st gr	CURRICULUM AND IMC	658.38	U
141958	LINGUI SYSTEMS INC	SOCIAL SKILLS CLASS MATERIALS	SPECIAL EDUCATION REGULAR YEAR	174.93	R
141858	MARKERTEK VIDEO SUPPLY	Blue removeable masking tape	THEATER OPERATIONS&FACILITY PR	131.67	R
142089	MARTIN AUTOMOTIVE GROUP	KEYS FOR ATHETIC VANS	SANTA MONICA HIGH SCHOOL	156.76	U
141698	MEDCO SUPPLY CO	HEALTH/SAFETY SUPPLIES	CHILD DEVELOPMENT CENTER	567.39	CD
142001	MICROSOFT CORPORATION	MICROSOFT TABLETS RT	FACILITY MAINTENANCE	1,408.34	R
142126	MICROSOFT CORPORATION	OPERATIONS OFFICE SUPPLIES	GROUPS MAINTENANCE	1,197.01	R
141936	MIRACLE RECREATION EQUIP CO	PLAYGROUND EQUIPMENT PART	FACILITY MAINTENANCE	959.58	R
141804	NEXTEL OF CALIFORNIA INC	MOBILE PHONE & SERVICE	THEATER OPERATIONS&FACILITY PR	316.48	R
141766	NORM'S REFRIGERATION & ICE	REFRIGERATOR REPAIR AT STORE	SAMOHI STUDENT STORE	191.80	U
142042	OLIVER WORLDCASS LABS INC	Smartboard system for room 2	FRANKLIN ELEMENTARY SCHOOL	5,982.27	R
142056	PACIFIC OFFICE INTERIORS	ADDITIONAL LABOR-2ND FLOOR	EDISON ELEMENTARY SCHOOL	2,500.00	BB
141961	PIONEER CHEMICAL CO	BACK PACK VACUUM	LINCOLN MIDDLE SCHOOL	420.83	R
142012	POINCENOT, JEREMY	GUEST SPEAKER	SANTA MONICA HIGH SCHOOL	1,100.00	R
142068	POSITIVE PROMOTIONS	RED RIBBON WEEK SUP/ASB/GIFT	JOHN ADAMS MIDDLE SCHOOL	455.16	R
142127	POSTMASTER-SANTA MONICA	POSTAGE	SANTA MONICA HIGH SCHOOL	1,287.00	R
141929	RALPH'S	BTSA SUPPLIES	PERSONNEL SERVICES	1,500.00	U
141989	REGENCY ENTERPRISES INC.	FLUORESCENT LAMPS	GRANT ELEMENTARY SCHOOL	78.84	U
142114	RICOH USA INC.	REFILL STAPLES FOR RICOH	CURRICULUM AND IMC	174.83	U
142004	RIDDELL/ALL AMERICAN	SAFETY EQUIPMENT	SANTA MONICA HIGH SCHOOL	271.61	U
141944	RUSCO INC	METAL LOCKERS SAMOHI	FACILITY MAINTENANCE	9,490.00	R
141976	SANTA MONICA POLICE DEPT-ALARM	FALSE ALARM FINE LINCOLN	FACILITY MAINTENANCE	247.29	R
142065	SCHOLASTIC	INST SUP/READ 180/LOTTERY	JOHN ADAMS MIDDLE SCHOOL	3,441.24	R
141822	SCHOOL HEALTH CORPORATION	NURSE SUPPLIES	JOHN MUIR ELEMENTARY SCHOOL	194.25	U
141838	SCHOOL HEALTH CORPORATION	NURSE SUPPLIES- COT SHEETS	WILL ROGERS ELEMENTARY SCHOOL	76.14	R
141883	SCHOOL HEALTH CORPORATION	HEALTH OFFICE SUPPLIES	MCKINLEY ELEMENTARY SCHOOL	255.48	R
141898	SCHOOL HEALTH CORPORATION	Nursing Supplies	CABRILLO ELEMENTARY SCHOOL	259.47	U
142015	SCHOOL HEALTH CORPORATION	SPED TOILETRY SUPPLIES	SPECIAL EDUCATION REGULAR YEAR	1,500.00	R
140473	SCHOOL INNOVATONS	CONSULTING SERVICE	STUDENT SERVICES	54,100.00	U
141915	SCHOOL NURSE SUPPLY INC	HEALTH SUPPLIES	OLYMPIC CONTINUATION SCHOOL	60.11	U

SANTA MONICA-MALIBU UNIFIED SCHOOL DISTRICT
PURCHASE ORDERS TO BE APPROVED AT THE BOARD MEETING OF OCTOBER 17, 2013

PAGE 4

U-GENERAL FUND, UNRESTRICTED R-GENERAL FUND, RESTRICTED A-ADULT ED CD-CHILD DEVELOPMENT F-CAFETERIA
SF-SPECIAL FINANCING (FLEX) BB,X-BONDS D-DEVELOPER FEES SR-SPECIAL RESERVE CAPITAL
DF-DEFERRED MAINTENANCE SM-STATE MODERNIZATION

PO NO.	VENDOR	DESCRIPTION	LOCATION	AMOUNT	
141878	SCHOOL OUTFITTERS LLC	HEADPHONES/IMMERSION	JOHN ADAMS MIDDLE SCHOOL	103.88	U
141914	SEARS	REFRIGERATOR	LINCOLN MIDDLE SCHOOL	570.59	R
141814	SEHI COMPUTER PRODUCTS	PRINTER	SANTA MONICA HIGH SCHOOL	466.49	R
141826	SEHI COMPUTER PRODUCTS	INK CARTRIDGE	THEATER OPERATIONS&FACILITY PR	397.46	R
141932	SEHI COMPUTER PRODUCTS	PRINTER CARTRIDGE	OLYMPIC CONTINUATION SCHOOL	254.85	U
141995	SEHI COMPUTER PRODUCTS	OFFICE PRINTER - FISCAL	FISCAL SERVICES	741.47	U
142050	SEHI COMPUTER PRODUCTS	LIBRARY SUPPLIES : TONERS	SANTA MONICA HIGH SCHOOL	552.62	U
141918	SEW WHAT? INC	100 CUSTOM DIGITAL PANELS	THEATER OPERATIONS&FACILITY PR	1,806.75	R
141781	SHAKESPEARE ENGRAVING	OPEN PO: AWARDS & TROPHIES	LINCOLN MIDDLE SCHOOL	1,000.00	R
142072	SHAKESPEARE ENGRAVING	OPEN ORDER/GIFT/VOCAL MUSIC	JOHN ADAMS MIDDLE SCHOOL	500.00	R
141949	SIMON-CAIN, MONICA	REIMBURSEMENT	CHILD DEVELOPMENT CENTER	200.00	CD
141662	SIR SPEEDY PRINTING #0245	PRINT OF PARENT HANDBOOK	EDISON ELEMENTARY SCHOOL	667.95	R
141705	SIR SPEEDY PRINTING #0245	PRINTING PROJECTS	BOE/SUPERINTENDENT	2,500.00	U
141777	SIR SPEEDY PRINTING #0245	OPEN PO: PRINTING SERVICES	LINCOLN MIDDLE SCHOOL	1,000.00	R
141924	SIR SPEEDY PRINTING #0245	ENVELOPES	PERSONNEL SERVICES	125.93	U
141973	SIR SPEEDY PRINTING #0245	BUSINESS CARDS/ADMIN	JOHN ADAMS MIDDLE SCHOOL	44.62	U
142069	SIR SPEEDY PRINTING #0245	OPEN ORDER/PRINTING/GIFT-VOCAL	JOHN ADAMS MIDDLE SCHOOL	500.00	R
142103	SIR SPEEDY PRINTING #0245	"SPIRIT TICKETS" FOR MS RAFFLE	MALIBU HIGH SCHOOL	375.40	U
141809	SMART & FINAL	OPEN ORDER/REFRESH/ELAC/PTSA	JOHN ADAMS MIDDLE SCHOOL	350.00	R
141926	SMART & FINAL	BTSA IN-SERVICE SUPPLIES	PERSONNEL SERVICES	400.00	U
141945	SMART & FINAL	OPEN ORDER/COOKING & SCIENCE	CHILD DEVELOPMENT CENTER	75.00	CD
141950	SMART & FINAL	OPEN ORDER/COOKING & SCIENCE	CHILD DEVELOPMENT CENTER	50.00	CD
142002	SMART SOURCE OF CALIFORNIA LLC	PRINTING	SANTA MONICA HIGH SCHOOL	723.89	U
142016	SO CAL SANITATION LLC	PEDESTRIAN GATE	JOHN ADAMS MIDDLE SCHOOL	1,585.50	BB
142076	SOUTH BAY LANDSCAPING	OPERATIONS GROUNDS CONTRACT	GROUNDS MAINTENANCE	4,500.00	R
142084	SOUTH BAY LANDSCAPING	OPERATIONS GROUNDS MOWER	FACILITY OPERATIONS	622.35	U
142075	SOUTHERN CALIFORNIA DISPOSAL	OPEN ORDER DISTRICT TRASH DISP	FACILITY MAINTENANCE	2,500.00	U
141818	SOUTHWEST SCHOOL SUPPLY	WORKROOM SUPPLIES	PT DUME ELEMENTARY SCHOOL	1,000.00	R
142049	SOUTHWEST SCHOOL SUPPLY	COMPOSITION BOOKS - 4TH GRADE	WILL ROGERS ELEMENTARY SCHOOL	96.58	R
141832	STAPLES BUSINESS ADVANTAGE	OFFICE SUPPLIES	PT DUME ELEMENTARY SCHOOL	500.00	U
141865	STAPLES BUSINESS ADVANTAGE	NON INSTR SUPPLIES/MUSIC	CURRICULUM AND IMC	800.00	R
141867	STAPLES BUSINESS ADVANTAGE	OFFICE SUPPLIES	WILL ROGERS ELEMENTARY SCHOOL	3,000.00	R
141948	STAPLES BUSINESS ADVANTAGE	SUPPLIES	CHILD DEVELOPMENT CENTER	200.00	CD
141960	STAPLES BUSINESS ADVANTAGE	NEW CLASSROOM SUPPLIES	SPECIAL EDUCATION REGULAR YEAR	175.00	R
142032	STAPLES BUSINESS ADVANTAGE	OPEN ORDER/SUPPLIES	CHILD DEVELOPMENT CENTER	1,000.00	CD
142033	STAPLES BUSINESS ADVANTAGE	OPEN ORDER/SUPPLIES	CHILD DEVELOPMENT CENTER	1,000.00	CD
142064	STAPLES/P-U/SANTA MONICA/WILSH	OPEN ORDER/INST SUP/NEW TEACH	JOHN ADAMS MIDDLE SCHOOL	100.00	U
142121	STAPLES/P-U/SANTA MONICA/WILSH	OPEN ORDER/SUPPLIES	CHILD DEVELOPMENT CENTER	50.00	CD
142067	STAPLES/P-U/VENICE/LINCOLN BL	OPEN ORDER/INST SUP/HUMANITIES	JOHN ADAMS MIDDLE SCHOOL	125.00	U
142117	STAPLES/P-U/VENICE/LINCOLN BL	OPEN ORDER/SUPPLIES	CHILD DEVELOPMENT CENTER	50.00	CD
141873	STAPLES/P-U/WLA/CUST#240174490	OPEN ORDER/CLASSROOM SUP/TEAM	JOHN ADAMS MIDDLE SCHOOL	120.00	U
142071	STAPLES/P-U/WLA/CUST#240174490	OPEN ORDER/GIFT/VOCAL MUSIC	JOHN ADAMS MIDDLE SCHOOL	500.00	R
142086	STATE OF CALIFORNIA	CCD REVISION INVOICE	JOHN ADAMS MIDDLE SCHOOL	411.60	BB
141983	SURVEYMONKEY.COM LLC	SURVEY SUBSCRIPTION	PERSONNEL SERVICES	200.00	U
142023	TANDUS US INC	FLOORING DISTRICT OFFICE	FACILITY MAINTENANCE	16,785.79	DF
141922	TEXTBOOK WAREHOUSE INC.	TEXTBOOKS	SANTA MONICA HIGH SCHOOL	1,204.50	R
142060	U S BANK (GOVT CARD SERVICES)	SOFTWARES	INFORMATION SERVICES	119.22	U
141972	ULINE INC.	SAFETY VEST	PURCHASING/WAREHOUSE	61.56	U
142109	UNIVERSAL SPECIALITIES INC	PLUMBING SUPPLIES	FACILITY MAINTENANCE	200.00	R
141657	VIRCO MFG CORP	DESKS AND TABLE	MCKINLEY ELEMENTARY SCHOOL	2,907.50	R
141978	VIRCO MFG CORP	CLASSROOM EQUIPMENT	SPECIAL EDUCATION REGULAR YEAR	330.07	R

SANTA MONICA-MALIBU UNIFIED SCHOOL DISTRICT
PURCHASE ORDERS TO BE APPROVED AT THE BOARD MEETING OF OCTOBER 17, 2013

PAGE 5

U-GENERAL FUND, UNRESTRICTED R-GENERAL FUND, RESTRICTED A-ADULT ED CD-CHILD DEVELOPMENT F-CAFETERIA
SF-SPECIAL FINANCING (FLEX) BB,X-BONDS D-DEVELOPER FEES SR-SPECIAL RESERVE CAPITAL
DF-DEFERRED MAINTENANCE SM-STATE MODERNIZATION

PO NO.	VENDOR	DESCRIPTION	LOCATION	AMOUNT	
141957	VONS STORE #2262	CLASSROOM SUPPLIES	SPECIAL EDUCATION REGULAR YEAR	164.25	R
141877	WAXIE SANITARY SUPPLY	CUSTODIAL SUPPLIES/PERMIT	JOHN ADAMS MIDDLE SCHOOL	1,264.77	R
141941	WAXIE SANITARY SUPPLY	IISS CUSTODIAL SUPPLIES	CURRICULUM AND IMC	39.07	R
141982	WAXIE SANITARY SUPPLY	CUSTODIAL SUPPLIES	OLYMPIC CONTINUATION SCHOOL	418.30	R
141723	WOODWIND & BRASSWIND	INSTRU MUSIC SUPPLIES/GIFT	JOHN ADAMS MIDDLE SCHOOL	4,039.18	R
** NEW PURCHASE ORDERS				466,022.58	

** FACILITY IMPROVEMENTS: BONDS/STATE MODERNIZATON/NEW CONSTRUCTION/DEVELOPER FEES **

141627	BALI CONSTRUCTION INC	FIRE LINE WORK	SANTA MONICA HIGH SCHOOL	13,500.00	BB
141638	BALI CONSTRUCTION INC	ASPHALT REPAIR 4TH & PICO	SANTA MONICA HIGH SCHOOL	21,451.65	BB
141963	ESSCO WHOLESALE ELECTRIC	LED LIGHTS	MALIBU HIGH SCHOOL	25,790.49	BB
141964	ESSCO WHOLESALE ELECTRIC	LED LIGHTS	MALIBU HIGH SCHOOL	6,252.24	BB
141591	LA PROS INC.	CONDUIT REPAIR	MALIBU HIGH SCHOOL	17,400.00	BB
141969	POSTMASTER-SANTA MONICA	POSTAGE	BUSINESS SERVICES	92.00	BB
141811	RAYCOM/MOBILE RELAY ASSOCIATES	YEARLY MAINTENANCE AGREEMENT	BUSINESS SERVICES	1,800.00	BB
141966	RICOH USA INC.	YEARLY MAINTENANCE AGREEMENT	BUSINESS SERVICES	699.40	BB
141655	SGS PLUMBING & RETROFITTING	CATCH BASIN INSTALLATION	SANTA MONICA HIGH SCHOOL	4,050.00	BB
141771	SOUTH BAY LANDSCAPING	SOUND WALL INSTALLATION	SANTA MONICA HIGH SCHOOL	13,500.00	BB
142081	STATE OF CALIFORNIA	CCD REVISION CHARGES	SANTA MONICA HIGH SCHOOL	2,307.90	BB
142082	STATE OF CALIFORNIA	CCD REVISION INVOICE	MALIBU HIGH SCHOOL	588.00	BB
142085	STATE OF CALIFORNIA	CCD REVISION INVOICE	MCKINLEY ELEMENTARY SCHOOL	49.00	BB
** FACILITY IMPROVEMENTS: BONDS/STATE MODERNIZATON/NEW CONSTRUCTION/DEVELOPER FEES				107,480.68	

TO: BOARD OF EDUCATION

ACTION/CONSENT

10/17/13

FROM: SANDRA LYON / JANECE L. MAEZ / PAT HO

RE: ACCEPTANCE OF GIFTS – 2013/2014

RECOMMENDATION NO. A.09

It is recommended that the Board of Education accept, with gratitude, checks totaling **\$17,965.65** presented to the Santa Monica-Malibu Unified School District.

It is further recommended that the Fiscal/Business Services Office, in accordance with Educational Code §42602, be authorized to increase the 2013-2014 income and appropriations by **\$17,965.65** as described on the attached listing.

This report details only cash gifts. It includes all contributions made by individuals or companies and some of the contributions made by our PTA's. Contributions made by a PTA in the form of a commitment and then billed are reported in a different resource. A final report that compiles all gift and PTA contributions is prepared and available annually.

COMMENT: The value of all non-cash gifts has been determined by the donors.

NOTE: The list of gifts is available on the District's website, www.smmusd.org.

MOTION MADE BY: Mr. Mechur
SECONDED BY: Dr. Escarce
STUDENT ADVISORY VOTE: Aye
AYES: All (7)
NOES: None (0)

School/Site Account Number	Cash Amount	Item Description	Purpose	Donor
Adams Middle School 01-90120-0-00000-00000-8699-011-0000	\$ 1,671.81 \$ 400.00 \$ 45.00		Direct Cost General Supplies and Materials General Supplies and Materials	Santa Monica Science Magnet Sally Frantschy Jaelene Tyrrel-Levi
Child Development Services		Children's Books	To be used in Pre-School Programs	Mary K. Knight
Ed Services 01-90120-0-17100-00000-8699-030-0000	\$ 5,000.00		Special Services, Classified	The Ella Fitzgerald Charitable Fund
Lincoln Middle School 01-90120-0-00000-00000-8699-012-0000	\$ 90.00		General Supplies and Materials	Various Parents
Malibu High School 01-90120-0-00000-00000-8699-010-0000	\$ 5,221.85 \$ 1,567.62 \$ 422.11 \$ 400.00		Non Capital Equipment Non Capital Equipment General Supplies and Materials General Supplies and Materials	Malibu High School Arts Angels Malibu High School Booster Club Target Jostens
McKinley Elementary School 01-90120-0-00000-00000-8699-004-0000	\$ 912.00 \$ 675.00 \$ 585.00 \$ 500.00 \$ 475.26		General Supplies and Materials General Supplies and Materials General Supplies and Materials Teachers, Substitute General Supplies and Materials	Various Various Various California- Community Foundation Target
TOTAL	\$17,965.65			

TO: BOARD OF EDUCATION

ACTION/CONSENT

10/17/13

FROM: SANDRA LYON / JANECE L. MAEZ / STUART A. SAM

RE: CONTRACT AMENDMENT #2 FOR CONTRACT EXTENSION FOR TWO
RELOCATABLE CLASSROOM BUILDINGS TO MCGRATH RENT
CORPORATION (DBA MOBILE MODULAR, INC.) FOR EDISON LANGUAGE
ACADEMY– DSA COMPLIANCE (CLOSE OUT) PROJECT – MEASURE BB

RECOMMENDATION NO. A.10

It is recommended that the Board of Education approve Contract Amendment #2 for contract extension for two relocatable classroom buildings to McGrath Rent Corporation (dba Mobile Modular, Inc.) for Edison Language Academy – DSA Compliance (Close Out) Project, in the amount of \$3,224, for a new contract amount of \$64,381.48.

Funding Information

Budgeted: Yes

Fund: 81 – Measure BB

Account Number: 81-90500-0-00000-85000-5630-001-2600

Budget Category: Soft Costs\ DSA Closeout

Friday Memo: 10/11/13

COMMENT: Mobile Modular has had a long-standing business relationship with the District and currently provides temporary building facilities for various campuses. They have been providing the temporary units during the construction project at Edison Language Academy.

On 11/18/10, the Board of Education approved an agreement with Mobile Modular for (2) classroom buildings for the duration of thirty (30) months for Edison Language Academy. The original contract was to serve the Edison Language Academy DSA Compliance (Close Out) Project. This proposed contract extension, four (4) months, will serve through completion of building construction for the Edison Language Academy DSA Compliance (Close Out) Project.

The four (4) month contract extension is for the lease of (2) 24'x40' classroom relocatable trailers. The funding for this work will come from the project soft cost allocations. It is recommended that the Board of Education approve contract extension for \$3,224.

ORIGINAL CONTRACT AMOUNT (PO#113930)	\$57,933.48
CONTRACT AMENDMENT #1 (4 month lease extension)	\$3,224.00
CONTRACT AMENDMENT #2 (4 month lease extension)	\$3,224.00
TOTAL CONTRACT	\$64,381.48

A Friday Memo accompanies this item.

MOTION MADE BY: Mr. Mechur
SECONDED BY: Dr. Escarce
STUDENT ADVISORY VOTE: Aye
AYES: All (7)
NOES: None (0)

TO: BOARD OF EDUCATION

ACTION/CONSENT

10/17/13

FROM: SANDRA LYON / JANECE L. MAEZ / STUART A. SAM

RE: CONTRACT AMENDMENT #31 FOR ARCHITECTURAL/ENGINEERING
DESIGN SERVICES FOR SANTA MONICA HIGH SCHOOL SCIENCE AND
TECHNOLOGY BUILDING AND SITE IMPROVEMENT PROJECT – R. L.
BINDER FAIA ARCHITECTS, LLP – MEASURE BB

RECOMMENDATION NO. A.11

It is recommended that the Board of Education approve CA#31 in the amount of \$16,803.00 to RL Binder FAIA Architects, LLP (RL Binder) for Architectural/Engineering services for the Santa Monica High School Science & Technology Building and Site Improvements Project for a total contract amount of \$7,808,070.

Funding Information

Budgeted: Yes
Fund: 83
Source: Measure BB
Account Number: 83-90500-0-00000-85000-5802-015-2600
Budget Category: Soft Costs/Design/Architects
DSA#: 03-113443
Friday Memo: 10/11/2013

COMMENTS: Contract Amendment #31 in the amount of \$16,803.00 is for modifications to make structural/architectural documents necessitated by the Contractor's DSA deviation notices. The design fees to make the deviation revisions will be reimbursed by the contractor and credited back to the District; and for value engineering of walls enclosing the storage area at the northern edge of the Phase II parking lot.

This Contract Amendment will be funded from within the Design budget.

The revised contract total to the RL Binder FAIA Architects LLP contract will be \$7,808,070.

(continued on next page)

ORIGINAL CONTRACT AMOUNT	\$1,209,688	\$1,085,157
CONTRACT AMENDMENT #1 & 2 (Siting Study)		\$180,000
CONTRACT AMENDMENT #3 (not issued)		\$0
CONTRACT AMENDMENT #4 (Programming additional services)		\$209,244
CONTRACT AMENDMENT #5 (DD/CD/CA)		\$4,878,954
CONTRACT AMENDMENT #6 (Fire protection design)		\$36,720
CONTRACT AMENDMENT #7 (Revision to siting study)		\$11,000
CONTRACT AMENDMENT #8 (Mechanical cooling design)		\$25,300
CONTRACT AMENDMENT #9 (Geotech revisions impact)	\$54,720	\$38,708
CONTRACT AMENDMENT #10 (50% CD review comments) Study #1		\$3,120
CONTRACT AMENDMENT #11 (50% CD review comments) Study #2		\$31,333
CONTRACT AMENDMENT #12 (50% CD review comments) Study #4		\$61,800
CONTRACT AMENDMENT #13 (50% CD review comments) Study #5		\$127,975
CONTRACT AMENDMENT #17 (1500kW Transformer)		\$73,299
CONTRACT AMENDMENT #20 (Unforeseen utility & fence re-design)		\$31,742
CONTRACT AMENDMENT #21 (Substitution)		\$6,036
CONTRACT AMENDMENT #22 (Phase 2 Area design)		\$231,900
CONTRACT AMENDMENT #23 (Re-Orientation & Electrical Transformer)		\$339,422
CONTRACT AMENDMENT #24 (Additional Arch./Eng. design services)		\$71,978
CONTRACT AMENDMENT #25 (Arch./Eng. Services)		\$10,824
CONTRACT AMENDMENT #26 (Arch./Eng. Services)		\$22,138
CONTRACT AMENDMENT #27 (Arch./Eng. Services)		\$20,863
CONTRACT AMENDMENT #28 (Arch./Eng. Services, Auto Shop Design Serv.)		\$26,516
CONTRACT AMENDMENT #29 (Arch./Eng. Services)		\$191,960
CONTRACT AMENDMENT #30 (Arch./Eng. Services)		\$75,278
CONTRACT AMENDMENT #31 (Arch./Eng. Services)		\$16,803
TOTAL CONTRACT		\$7,808,070

R. L. BINDER FAIA ARCHITECTS, LLP AMENDMENTS UNDER SEPARATE FUNDING SOURCE

CONTRACT AMENDMENT #14 (Siting study II)	\$153,950
CONTRACT AMENDMENT #15 (CCJUP Siting Study 2)	\$0
CONTRACT AMENDMENT #16 (APEOP Synthetic Turf Field)	\$63,486
CONTRACT AMENDMENT #18 (CCJUP MOU#2 Storm Drain)	\$8,750
CONTRACT AMENDMENT #19 (CCJUP MOU#2 Storm Drain)	\$3,910
TOTAL CONTRACT	\$230,096

A Friday Memo accompanies this board item.

MOTION MADE BY: Mr. Mechur
 SECONDED BY: Dr. Escarce
 STUDENT ADVISORY VOTE: Aye
 AYES: All (7)
 NOES: None (0)

TO: BOARD OF EDUCATION

ACTION/CONSENT

10/17/13

FROM: SANDRA LYON / JANECE L. MAEZ / STUART A. SAM

RE: AMENDMENT TO CONTRACT – LEASE LEASEBACK – JOHN ADAMS MIDDLE SCHOOL – REPLACEMENT OF CLASSROOM BUILDINGS E, F, & G, NEW ADMINISTRATION, MODERNIZATION & SITE IMPROVEMENTS PACKAGE 2B – SWINERTON BUILDERS – MEASURE BB

RECOMMENDATION NO. A.12

It is recommended that the Board of Education approve Change Order No. 14 for the Lease Leaseback – John Adams Middle School – Replacement of Classroom Building E, F & G, New Administration, Modernization and Site Improvements Project (Package 2B) to Swinerton Builders, for an amount of \$81,343.05 for a total contract amount of \$13,147,124.83 and 0 days of schedule impact.

Funding Information

Budgeted: No

Fund: 82

Source: Measure BB

Account Number: 82-90500-0-00000-85000-6200-011-2600

Budget Category: Hard Costs/Construction/Construction Contracts

DSA #: 03-112808

Friday Memo: 10/11/13

COMMENTS: On July 20, 2011, the Santa Monica-Malibu Unified School District Board of Education awarded Swinerton Builders the lease leaseback contract for the John Adams Middle School – Replacement of Classroom Building E, F & G, New Administration, Modernization and Site Improvements Project in the amount of \$11,728,854.

Change Order No. 14 includes fourteen (14) items related to additional scope of work totaling \$71,701.79, one (1) credit for engineering services provided by the Structural Engineer totaling (\$2,275.00) and four (4) items related to unforeseen conditions totaling \$11,916.26, for a total Change Order amount of \$81,343.05.

The scope of work included in Change Order No.14 includes all labor, materials, equipment and related overhead costs for the work described for each item. This contract increase includes one structural change to the contract documents that has been submitted to DSA for approval.

Change Order No. 14 will be funded by the Project Reserve as allocated for John Adams Middle School. The contract duration will remain unchanged on the John Adams Middle School – Replacement of Classroom Building E, F & G, New Administration, Modernization and Site Improvements Project.

(continued on next page)

Change Order No. 14 (CO-14) includes the following changes to the terms of the contract:

ORIGINAL CONTRACT AMOUNT	\$11,728,854.00
CHANGE ORDER NO. 1	\$106,339.03
CHANGE ORDER NO. 2	\$15,787.16
CHANGE ORDER NO. 3	\$25,369.51
CHANGE ORDER NO. 4	\$52,926.56
CHANGE ORDER NO. 5	\$47,660.21
CHANGE ORDER NO. 6	\$120,782.00
CHANGE ORDER NO. 7	\$44,962.23
CHANGE ORDER NO. 8	\$103,655.24
CHANGE ORDER NO. 9	\$172,524.08
CHANGE ORDER NO. 10	\$194,439.72
CHANGE ORDER NO. 11	\$91,989.49
CHANGE ORDER NO. 12	\$139,761.67
CHANGE ORDER NO. 13	\$220,730.88
<u>CHANGE ORDER NO. 14</u>	<u>\$81,343.05</u>
TOTAL CONTRACT	\$13,147,124.83

Change Order No. 14 (CO-14) includes no increase to the contract time:

ORIGINAL CONTRACT AMOUNT	465 Days
CHANGE ORDER NO. 1	0 Days
CHANGE ORDER NO. 2	0 Days
CHANGE ORDER NO. 3	0 Days
CHANGE ORDER NO. 4	0 Days
CHANGE ORDER NO. 5	0 Days
CHANGE ORDER NO. 6	0 Days
CHANGE ORDER NO. 7	0 Days
CHANGE ORDER NO. 8	0 Days
CHANGE ORDER NO. 9	0 Days
CHANGE ORDER NO. 10	6 Days
CHANGE ORDER NO. 11	0 Days
CHANGE ORDER NO. 12	0 Days
CHANGE ORDER NO. 13	0 Days
<u>CHANGE ORDER NO. 14</u>	<u>0 Days</u>
TOTAL CONTRACT AMOUNT	471 DAYS

A Friday Memo accompanies this item.

MOTION MADE BY: Mr. Mechur
SECONDED BY: Dr. Escarce
STUDENT ADVISORY VOTE: Aye
AYES: All (7)
NOES: None (0)

TO: BOARD OF EDUCATION

ACTION/CONSENT

10/17/13

FROM: SANDRA LYON / JANECE L. MAEZ / STUART A. SAM

RE: ACCEPT WORK AS COMPLETED – MULTIPLE PURCHASE ORDERS
PROJECTS – MEASURE BB

RECOMMENDATION NO. A.13

It is recommended that the Board of Education accept as completed all work contracted for the indicated Purchase Orders:

Malibu Middle & High School – New Building, Modernization Project

Vendor Name: E.A.S. Bobcat Works, Inc.
Budgeted: Yes
P.O Number: 140778
Amount: \$44,800.00
Fund: 83
Source: Measure BB
Account: 83-90500-0-00000-85000-6200-010-2600
Budget Category: Hard Costs\Construction
Substantial Completion Date: 08/19/2013

Malibu Middle & High School – New Building, Modernization Project

Vendor Name: Lahav Construction and Electric, Inc.
Budgeted: Yes
P.O Number: 140780
Amount: \$44,980.00
Fund: 83
Source: Measure BB
Account: 83-90500-0-00000-85000-6200-010-2600
Budget Category: Hard Costs\Construction
Substantial Completion Date: 08/19/2013

Malibu Middle & High School – New Building, Modernization Project

Vendor Name: Elad Segal
Budgeted: Yes
P.O Number: 140942
Amount: \$44,900.00
Fund: 83
Source: Measure BB
Account: 83-90500-0-00000-85000-6200-010-2600
Budget Category: Hard Costs\Construction
Substantial Completion Date: 08/19/2013

COMMENT: In order to facilitate the release of the final payment, a Notice of Completion must be filed within thirty-five (35) days with the County of Los Angeles pending approval by the Board of Education.

MOTION MADE BY: Mr. Mechur
SECONDED BY: Dr. Escarce
STUDENT ADVISORY VOTE: Aye
AYES: All (7)
NOES: None (0)

TO: BOARD OF EDUCATION

ACTION/CONSENT

10/17/13

FROM: SANDRA LYON / DEBRA MOORE WASHINGTON

RE: CERTIFICATED PERSONNEL – Elections, Separations

RECOMMENDATION NO. A.14

Unless otherwise noted, all items are included in the 2013/2014 approved budget.

ADDITIONAL ASSIGNMENTS

ADAMS MIDDLE SCHOOL

Bon, Nancy	2 hrs @\$40.46	9/17/13-9/27/13	Est Hrly/\$81
Ransom, Barbara	2 hrs @\$40.46	9/17/13-9/27/13	<u>Est Hrly/\$81</u>
TOTAL ESTABLISHED HOURLY			\$162

Comment: Lesson Study Planning Meetings
01-Tier III Programs Cat Flex

Bodok, Susan	\$40.46, as needed	9/9/13-6/10/13	<u>Est Hrly/\$----</u>
TOTAL ESTABLISHED HOURLY			\$----

Comment: After School Library Supervision
01-Reimbursed by PTA

Asher, Jeanette	40 hrs @\$40.46	9/21/13-6/6/14	Est Hrly/\$1,618
Murphy, Letitia	40 hrs @\$40.46	9/21/13-6/6/14	Est Hrly/\$1,618
Rajabali, Jahan	40 hrs @\$40.46	9/21/13-6/6/14	Est Hrly/\$1,618
Saling, David	40 hrs @\$40.46	9/21/13-6/6/14	Est Hrly/\$1,618
Sever, Pamela	40 hrs @\$40.46	9/21/13-6/6/14	<u>Est Hrly/\$1,618</u>
TOTAL ESTABLISHED HOURLY			\$8,090

Comment: Saturday School
01-Unrestricted Resource

EDUCATIONAL SERVICES

Duran-Contreras, Martha	6 hrs @\$40.46	9/12/13-9/19/13	Est Hrly/\$243
Witt, Carl	6 hrs @\$40.46	9/12/13-9/19/13	<u>Est Hrly/\$243</u>
TOTAL ESTABLISHED HOURLY			\$486

Comment: Creating Math Benchmark Assessment
01-RGK Foundation

FRANKLIN ELEMENTARY SCHOOL

Both, Katherine Sue	32 hrs @\$40.46	10/1/13-6/5/14	Est Hrly/\$1,295
Fiske, Nikki	32 hrs @\$40.46	10/1/13-6/5/14	Est Hrly/\$1,295
Hampton, Lynne	32 hrs @\$40.46	10/1/13-6/5/14	Est Hrly/\$1,295
Micale, Monica	32 hrs @\$40.46	10/1/13-6/5/14	<u>Est Hrly/\$1,295</u>
TOTAL ESTABLISHED HOURLY			\$5,180

Comment: Homework Club
01-Reimbursed by PTA

HUMAN RESOURCES

Bersch, Kirsten	25 hrs @\$40.46	10/1/13-6/10/14	Est Hrly/\$1,012
Boyle, Laura	25 hrs @\$40.46	10/1/13-6/10/14	Est Hrly/\$1,012
Harris, John	25 hrs @\$40.46	10/1/13-6/10/14	Est Hrly/\$1,012
McGregory, Cynthia	25 hrs @\$40.46	10/1/13-6/10/14	Est Hrly/\$1,012
Munoz, Sal	25 hrs @\$40.46	10/1/13-6/10/14	Est Hrly/\$1,012
Reyes, Katrina	25 hrs @\$40.46	10/1/13-6/10/14	<u>Est Hrly/\$1,012</u>
TOTAL ESTABLISHED HOURLY			\$6,072

Comment: BTSA Support Providers
01-Tier III Programs Cat Flex

LINCOLN MIDDLE SCHOOL

Catanzano, Linda	18 hrs @\$40.46	7/9/13-7/11/13	Est Hrly/\$728
Levy, Amanda	18 hrs @\$40.46	7/9/13-7/11/13	Est Hrly/\$728
Palumbus, Beth	18 hrs @\$40.46	7/9/13-7/11/13	Est Hrly/\$728
Preuss, Jennifer	18 hrs @\$40.46	7/9/13-7/11/13	Est Hrly/\$728
Tolentino, Aimee	18 hrs @\$40.46	7/9/13-7/11/13	Est Hrly/\$728
		TOTAL ESTABLISHED HOURLY	\$3,640

Comment: Student Workshop
01-Reimbursed by PTA

Counte, Vanessa	4 hrs @\$40.46	9/9/13-6/10/14	Est Hrly/\$ 162
McLaughlin, Gretchen	6 hrs @\$40.46	9/9/13-6/10/14	Est Hrly/\$ 243
Moazzez, Rozita	106 hrs @\$40.46	9/9/13-6/10/14	Est Hrly/\$4,289
O'Brien, Marianna	36 hrs @\$40.46	9/9/13-6/10/14	Est Hrly/\$1,457
Urtz, Markelle	10 hrs @\$40.46	9/9/13-6/10/14	Est Hrly/\$ 405
Valenzuela, Amanda	6 hrs @\$40.46	9/9/13-6/10/14	Est Hrly/\$ 243
		TOTAL ESTABLISHED HOURLY	\$6,799

Comment: After School Library Supervision
01-Reimbursed by PTA

MALIBU HIGH SCHOOL

Corrigan, Brian	161 hrs @\$81.18	9/23/13-6/10/14	Own Hrly/\$13,070
		TOTAL OWN HOURLY	\$13,070

Comment: 6th Period Assignment
01-Unrestricted Resource

DiMercurio, Joseph	200 hrs @\$40.46	9/3/13-6/10/14	Est Hrly/\$8,092
		TOTAL ESTABLISHED HOURLY	\$8,092

Comment: After School Library Supervision
01-Malibu Shark Fund

MUIR ELEMENTARY SCHOOL

Brizuela, Luis	1.5 hrs @\$40.46	9/25/13	Est Hrly/\$61
Chandler, Ashley	1.5 hrs @\$40.46	9/25/13	Est Hrly/\$61
Davies, Michael	1.5 hrs @\$40.46	9/25/13	Est Hrly/\$61
Griffen, Kimberly	1.5 hrs @\$40.46	9/25/13	Est Hrly/\$61
Gusmao-Garcia Williams, R.	1.5 hrs @\$40.46	9/25/13	Est Hrly/\$61
Hyatt, Lova	1.5 hrs @\$40.46	9/25/13	Est Hrly/\$61
Pankow, Karen	1.5 hrs @\$40.46	9/25/13	Est Hrly/\$61
Trubo, Melissa	1.5 hrs @\$40.46	9/25/13	Est Hrly/\$61
Vallejo, Norma	1.5 hrs @\$40.46	9/25/13	Est Hrly/\$61
Wheeler, Daniel	1.5 hrs @\$40.46	9/25/13	Est Hrly/\$61
		TOTAL ESTABLISHED HOURLY	\$610

Comment: Book Leveling
01-Tier III Programs Cat Flex

SANTA MONICA HIGH SCHOOL

Battung, Jason	\$40.46, as needed	9/28/13-6/9/14	Est Hrly/\$----
Chavez, Craig	\$40.46, as needed	9/28/13-6/9/14	Est Hrly/\$----
Cierra, Jorge	\$40.46, as needed	9/28/13-6/9/14	Est Hrly/\$----
Forrer, Brooke	\$40.46, as needed	9/28/13-6/9/14	Est Hrly/\$----
Gomez, Candelario	\$40.46, as needed	9/28/13-6/9/14	Est Hrly/\$----
Gonsalves, Diane	\$40.46, as needed	9/28/13-6/9/14	Est Hrly/\$----
Gutierrez, Laurie	\$40.46, as needed	9/28/13-6/9/14	Est Hrly/\$----
Lipetz, Sarah	\$40.46, as needed	9/28/13-6/9/14	Est Hrly/\$----
Magnuson, Ruth	\$40.46, as needed	9/28/13-6/9/14	Est Hrly/\$----
McElvain, Nora	\$40.46, as needed	9/28/13-6/9/14	Est Hrly/\$----
Salumbides, Rose	\$40.46, as needed	9/28/13-6/9/14	Est Hrly/\$----

Sass, Amanda	\$40.46, as needed	9/28/13-6/9/14	<u>Est Hrly/\$----</u>
		TOTAL ESTABLISHED HOURLY	\$----
Comment: Saturday School 01-Unrestricted Resource			

SPECIAL EDUCATION

Proctor, Valerii	9 hrs @\$29.49	6/24/13-7/12/13	<u>Own Hrly/\$265</u>
		TOTAL OWN HOURLY	\$265

Comment: ESY Student Assessments
01-Special Education

Proctor, Valerii	18 hrs @\$29.49	6/17/13-7/12/13	Own Hrly/\$ 531
Proctor, Valerii	40 hrs @\$29.49	8/21/13-6/30/14	<u>Own Hrly/\$1,180</u>
		TOTAL OWN HOURLY	\$1,711

Comment: IEP Attendance
01-Special Education

STUDENT SERVICES

Yates, Barry	25 hrs @\$67.85	8/22/13-11/1/13	<u>Own Hrly/\$1,696</u>
		TOTAL OWN HOURLY	\$1,696

Comment: SARB Chairperson
01-Unrestricted Resource

Hannan, Ellen	12 hrs @\$40.46	8/22/13-6/10/14	Est Hrly/\$486
Jeffries, Jane	12 hrs @\$40.46	8/22/13-6/10/14	Est Hrly/\$486
Relles, Ellen	12 hrs @\$40.46	8/22/13-6/10/14	<u>Est Hrly/\$486</u>
		TOTAL ESTABLISHED HOURLY	\$1,458

Comment: Assist School Nurse with Mandatory Hearing/Vision Tests
01-Unrestricted Resource

HOURLY TEACHERS

<u>ROP</u>			
Saunders, Shawn	450 hrs @\$45.34	9/23/13-6/10/14	<u>Est Hrly/\$20,403</u>
		TOTAL ESTABLISHED HOURLY	\$20,403

Comment: ROP Instruction
01-ROP-Classroom/Program

STUDENT SERVICES

Blagovich, Milos	\$40.46, as needed	10/1/13-6/10/14	<u>Est Hrly/\$----</u>
		TOTAL ESTABLISHED HOURLY	\$----

Comment: Home Instructor
01-Unrestricted Resource

ADDITIONAL ASSIGNMENT – DEPARTMENT CHAIR ASSIGNMENTS

JOHN ADAMS MIDDLE SCHOOL

<u>Name</u>	<u>Rate</u>	<u>Assignment</u>	<u>Effective</u>	<u>Not to Exceed</u>
Adams, Tracy	2 EDU	AVID	2013/14 SY	\$ 512
Asher, Jeanette	6 EDU	Physical Ed	2013/14 SY	\$1,536
Bon, Nancy	4 EDU	Math – 1 st Semester	2013/14 SY	\$1,024
Brown, Daniel	6 EDU	Science	2013/14 SY	\$1,536
Check, Laura	6 EDU	Counseling	2013/14 SY	\$1,536
Joyce-West, Jennifer	2 EDU	Electives	2013/14 SY	\$ 512
Jung, Parisa	4 EDU	Math – 2 nd Semester	2013/14 SY	\$1,024
Kusion, Alex	2 EDU	Immersion	2013/14 SY	\$ 512
Loopesko, Lorna	6 EDU	Humanities	2013-14 SY	\$1,536
Murphy, Letitia	6 EDU	Social Studies	2013/14 SY	\$1,536

Saling, David	6 EDU	Lang Arts	2013/14 SY	\$1,536
Scotland, Alva	2 EDU	ELL	2013/14 SY	\$ 512
Whaley, Joseph	10 EDU	Special Ed	2013/14 SY	\$2,560
Woo, Angela	6 EDU	VAPA	2013/14 SY	<u>\$1,536</u>
			TOTAL	\$17,408

LINCOLN MIDDLE SCHOOL

<u>Name</u>	<u>Rate</u>	<u>Assignment</u>	<u>Effective</u>	Not to <u>Exceed</u>
Diamond, Renee	10 EDU	Math	2013/14 SY	\$2,560
Hunt, Mark	6 EDU	VAPA	2013/14 SY	\$1,536
Hyland, Amy	10 EDU	Special Ed	2013/14 SY	\$2,560
Moazzez, Rozita	6 EDU	Humanities	2013/14 SY	\$1,536
Stauffer, Aimee	2 EDU	Counseling	2013/14 SY	\$ 512
Stauffer, Nathaniel	4 EDU	Physical Ed	2013/14 SY	\$1,024
Suffolk, Stefanie	8 EDU	Science	2013/14 SY	\$2,048
Underwood, Brian	4 EDU	Physical Ed	2013/14 SY	\$1,024
Valenzuela, Amanda	2 EDU	History	2013/14 SY	\$ 512
Vieira, Ron	6 EDU	Humanities	2013/14 SY	<u>\$1,536</u>
			TOTAL	\$14,848

MALIBU HIGH SCHOOL

<u>Name</u>	<u>Rate</u>	<u>Assignment</u>	<u>Effective</u>	Not to <u>Exceed</u>
Andino, Melisa	6 EDU	MS Math	2013/14 SY	\$1,536
Bowman-Smith, Carla	4 EDU	HS VAPA	2013/14 SY	\$1,024
Deshautelle, Anna	10 EDU	Special Ed	2013/14 SY	\$2,560
Hoos, JuliaCheri	10 EDU	MS Humanities	2013/14 SY	\$2,560
Lambert, Lisa	6 EDU	Physical Ed	2013/14 SY	\$1,536
Leonard, Brigitte	4 EDU	MS VAPA	2013/14 SY	\$1,024
Owens, Rebecca	6 EDU	World Languages	2013/14 SY	\$1,536
Sferra, Luke	6 EDU	Counseling	2013/14 SY	<u>\$1,536</u>
			TOTAL	\$13,312

SANTA MONICA HIGH SCHOOL

<u>Name</u>	<u>Rate</u>	<u>Assignment</u>	<u>Effective</u>	Not to <u>Exceed</u>
Bates, Kelly	14 EDU	Languages	2013/14 SY	\$3,584
Cierra, Jorge	14 EDU	Special Ed	2013/14 SY	\$3,284
Gutierrez, Laurie	6 EDU	Visual Arts	2013/14 SY	\$1,536
Huls, Jeffe	8 EDU	Performing Arts	2013/14 SY	\$2,048
Skaggs, Debbie	8 EDU	Physical Ed	2013/14 SY	\$2,048
Vo, Cam-An	12 EDU	Advisors	2013/14 SY	<u>\$3,072</u>
			TOTAL	\$15,572

ADDITIONAL ASSIGNMENT – EXTRA DUTY UNITS

SANTA MONICA HIGH SCHOOL – Fall Athletics

<u>Name</u>	<u>Rate</u>	<u>Assignment</u>	<u>Effective</u>	Not to <u>Exceed</u>
Dunn, George	12 EDU	Asst. Football Coach	9/13-11/13	\$3,072
Fischer, Tania	13 EDU	Var. Cross Country	9/13-11/13	\$3,328
Flanders, Matt	13 EDU	Var. Water Polo	9/13-11/13	\$3,328
Hoffman, Ryan	13 EDU	Var. Girls Golf	9/13-11/13	\$3,328
Kim, Doug	12 EDU	Asst. Football Coach	9/13-11/13	\$3,072
Sato, Glenn	12 EDU	Asst. Volleyball	9/13-11/13	\$3,072
Sato, Liane	13 EDU	Var. Volleyball	9/13-11/13	<u>\$3,328</u>
			TOTAL EDUS	\$22,528

TOTAL ESTABLISHED HOURLY, OWN HOURLY AND EXTRA DUTY UNITS = \$ 161,402

NEW HIRES

TEMPORARY CONTRACTS

<u>Name/Assignment/Location</u>	<u>Not to Exceed</u>	<u>Effective</u>
Cairns, Cristin/Humanities Malibu High School	20%	9/20/13-6/10/14
Mi, Joyce/Math Santa Monica HS	80%	9/30/13-6/10/14
Tate, Alia/TK Rogers Elementary	100%	9/30/13-6/10/14

CHANGE IN EMPLOYEE STATUS: PROBATIONARY TO TENURED

<u>Name/Assignment/Location</u>	<u>Not to Exceed</u>	<u>Effective</u>
Blair, Susy/SAI Webster Elementary	100%	8/20/13
Ellege, Rachel/SAI-Preschool McKinley Elementary	100%	8/20/13
Grant, Sandy/Librarian Santa Monica HS	50%	8/20/13
Hoffman, Ryan/Math Santa Monica HS	100%	8/20/13
Kerkotchian, Sylvia/4 th Grade Rogers Elementary	100%	8/20/13
Marek, Mallory/SAI – Autism Grant Elementary	100%	8/20/13
Mejia, Rosa/College Counselor Santa Monica HS	100%	8/20/13
Oyman, Deniz/SAI Edison Elementary	80%	8/20/13
Sass, Amanda/SAI Santa Monica HS	100%	8/20/13
Schmidt, Samantha/English Santa Monica HS	100%	8/20/13
Seals, Michael/English Santa Monica HS	100%	8/20/13
Sinfield, Paul/SAI Santa Monica HS	100%	8/20/13
Soller, Katheryne/Theater Arts Santa Monica HS	100%	8/20/13
Swift, Jessica/Music John Adams MS	100%	8/20/13
Thomas, Kate/SAI-Autism John Adams MS	100%	8/20/13

Vasquez, Martha/Kindergarten Rogers Elementary	100%	8/20/13
Wang, Jim/Music Lincoln MS	100%	8/20/13
Young, Cerenity/SAI Santa Monica HS	100%	8/20/13
Yumori, Nicole/Math Santa Monica HS	100%	8/20/13

SUBSTITUTE TEACHERS

Effective

LONG-TERM SUBSTITUTES

(@\$210.00 Daily Rate)

Kuipers, Catherine	9/23/13
--------------------	---------

PREFERRED SUBSTITUTES

(@\$162.00 Daily Rate)

Berens, Candis	9/30/13
----------------	---------

Lipsky, Jill	9/30/13
--------------	---------

REGULAR DAY-TO-DAY SUBSTITUTES

(@\$138.00 Daily Rate)

Mehring, Hanna	10/1/13
----------------	---------

CHANGE IN ASSIGNMENT

Effective

Freehill, Nikki	9/23/13-6/10/14
-----------------	-----------------

McKinley Elementary/ELL Teacher

From: 50%

To: 80%

LEAVE OF ABSENCE (with pay)

Name/Location

Effective

Clark, Jason Malibu HS	9/30/13-10/21/13 [FMLA]
---------------------------	----------------------------

Gutierrez, Sofia Child Develop Svcs	9/19/13-10/2/13 [medical]
--	------------------------------

Loch, Amy Malibu HS	9/20/13-10/4/13 [medical]
------------------------	------------------------------

MOTION MADE BY: Mr. Mechur
 SECONDED BY: Dr. Escarce
 STUDENT ADVISORY VOTE: Aye
 AYES: All (7)
 NOES: None (0)

TO: BOARD OF EDUCATION

FROM: SANDRA LYON / BRANDON TIETZE

RE: CLASSIFIED PERSONNEL – MERIT

ACTION/CONSENT
10/17/13

RECOMMENDATION NO. A.15

It is recommended that the following appointments for Classified Personnel (merit system) be approved and/or ratified. All personnel will be properly elected in accordance with District policies and salary schedules.

<u>NEW HIRES</u>		<u>EFFECTIVE DATE</u>
Gonzalez, Laura McKinley ES	Inst Asst – Specialized 6 Hrs/SY/Range:26 Step:A	9/30/13
Lampert, Elisabeth Child Develop Svcs	Accountant 8 Hrs/12 Mo/Range: 41 Step:F	10/7/13
Lee, Eun Grant ES	Inst Asst – Classroom 2 Hrs/SY/Range:18 Step:A	9/23/13
Melkonian, Marcia McKinley ES	Elementary Library Coordinator 7 Hrs/10 Mo/Range:26 Step:A	9/23/13
Monroy, Rosa Grant ES	Inst Asst – Classroom 2 Hrs/SY/Range:18 Step:A	9/16/13
Nikol, Resa Grant ES	Inst Asst – Classroom 3 Hrs/SY/Range:18 Step:A	9/23/13
Sebastiani, Guido Grounds	Gardener 8 Hrs/12 Mo/Range: 24 Step: A	9/24/13
Shibl, Ghada Grant ES	Inst Asst – Classroom 3 Hrs/SY/Range:18 Step:A	9/23/13
Urie, Briana Special Education	Inst Asst – Specialized 6 Hrs/SY/Range:26 Step:A	9/30/13

<u>PROMOTION</u>		<u>EFFECTIVE DATE</u>
Smith, Sabrina Special Ed-Santa Monica HS	Inst Asst – Specialized 6 Hrs/SY/Range: 26 Step: D Fr: Inst Asst – Special Ed: 6 Hrs/SY	9/30/13

<u>TEMP/ADDITIONAL ASSIGNMENTS</u>		<u>EFFECTIVE DATE</u>
Anderson, Sally Malibu HS	Senior Office Specialist [additional hours; assistance with attendance]	8/22/13-6/30/14
Bolan, Anette Student Svcs	Campus Security Officer [overtime; address verifications]	9/3/13-6/10/14
Boston, Kim McKinley ES	Inst Asst – Special Ed [additional hours; classroom assistance]	9/3/13-6/10/14
Burkett, Deena Facility Permits	Senior Office Specialist [additional hours; clerical assistance]	9/1/13-9/30/13

De Noya, Michael Special Education	Speech Language Pathology Assistant [additional hours, SPED Instructor training]	8/19/13
Herrada, Joe Lincoln MS	Custodian [overtime; night time events]	8/22/13-6/10/14
Jauregui, Jorge Roosevelt ES	Technology Support Assistant [overtime; computer lab parent support]	9/11/13-9/27/13
Lowe, Heather McKinley ES	Elementary Library Coordinator [additional hours; GATE program]	10/1/13-5/31/14
Loza, Adelsa Lincoln MS	Inst Asst – Special Ed [additional hours; computer lab assistance]	8/22/13-6/10/14
Medellin, Diana Lincoln MS	Inst Asst – Special Ed [additional hours; computer lab assistance]	8/22/13-6/10/14
Oyenoki, Elizabeth McKinley ES	Senior Office Specialist [additional hours; Program Improvement Data]	8/29/13
Perez, Salomon Special Ed-Santa Monica HS	Inst Asst – Specialized [additional hours, bus ride supervision]	8/26/13-6/10/14
Tangum, Cathy Olympic HS	Campus Security Officer [overtime; Saturday school security]	9/20/13-6/10/14
Tursi, Lisa Roosevelt ES	Administrative Assistant [overtime; Achievement Data]	9/11/13-11/11/13
Uliantzeff, Elena Muir ES	Bilingual Community Liaison [additional hours; IEP translation]	9/17/13
Valenzuela, Laurel Pt. Dume ES	Inst Asst – Special Ed [additional hours; bus ride supervision]	8/28/13-9/13/13
<u>SUBSTITUTES</u>		<u>EFFECTIVE DATE</u>
Arreola, Kenia Food and Nutrition Svcs	Cafeteria Worker I	9/16/13-6/10/14
Brigham, Dolores Child Develop Svcs	Children's Center Asst	8/22/13-6/30/14
Coleman, Daniel District	Inst Asst – Physical Education	9/1/13-6/30/14
Lang, John Pt. Dume ES	Inst Asst – Classroom	8/21/13-6/10/14
Lopez, Mayra Special Education	Inst Asst – Special Ed	9/16/13-6/30/14
Morales, Ismael Child Develop Svcs	Children's Center Asst	8/22/13-6/30/14
Park, Ko Lincoln MS	Accompanist	9/23/13-6/10/14
Thompson, Qiana Food and Nutrition Svcs	Cafeteria Worker I	9/30/13-6/10/14

INVOLUNTARY TRANSFER

		<u>EFFECTIVE DATE</u>
Brown, Elizabeth Santa Monica HS	Inst Asst – Special Ed 6 Hrs/SY Fr: 6 Hrs/SY/Special Education	9/6/13
Drayton, Brandon Malibu HS	Inst Asst – Special Ed 6 Hrs/SY Fr: 6 Hrs/SY/McKinley ES	9/6/13
Ortega, Lisa McKinley ES	Inst Asst – Special Ed 6 Hrs/SY Fr: 6 Hrs/SY/Pt. Dume ES	8/21/13

VOLUNTARY TRANSFER IN LIEU OF LAYOFF

		<u>EFFECTIVE DATE</u>
Johnson, Mayra Child Develop Svcs-SAMOH ITC	Children's Center Asst 8 Hrs/SY Fr: Bilingual Community Liaison: 8 Hrs/12 Mo	9/30/13

CHANGE IN ASSIGNMENT

		<u>EFFECTIVE DATE</u>
Franks, Shanelle McKinley ES	Inst Asst – Developmental Health 7 Hrs/SY Fr: 5 Hrs/SY	8/26/13
Lang, John Pt. Dume ES	Inst Asst – Classroom 5 Hrs/SY Fr: 3 Hrs/SY	8/21/13
Long, Lakesha McKinley ES	Inst Asst – Classroom 5 Hrs/SY Fr: 3 Hrs/SY	9/27/13
Mederos, Eden Santa Monica HS	Inst Asst – Specialized 6.3 Hrs/SY Fr: 6 Hrs/SY	8/21/13

LEAVE OF ABSENCE (PAID)

		<u>EFFECTIVE DATE</u>
Chulack, Sarah McKinley ES	Inst Asst – Specialized Medical	9/5/13-10/7/13
Gonzalez, Jessica Child Develop Svcs-Grant ES	Children's Center Asst Medical	8/22/13-10/3/13
Rosa, Lucy Lincoln MS	Inst Asst – Developmental Health Medical	8/30/13-9/18/13
Shanley, Scott Franklin ES	Physical Activities Specialist Medical	9/16/13-10/17/13

LEAVE OF ABSENCE (UNPAID)

		<u>EFFECTIVE DATE</u>
Davis, Jeffery Maintenance	Carpenter FMLA	9/1/13-6/30/14

PROFESSIONAL GROWTH

		<u>EFFECTIVE DATE</u>
Cooper, Dionne Pt. Dume ES	Elementary Library Coordinator	10/1/13
Goudeau, TajaNieace Santa Monica HS	Inst Asst – Physical Education	10/1/13

WORKING OUT OF CLASS

Bakhyt, Peter
Food and Nutrition Svcs

Stock and Delivery Clerk
Fr: Cafeteria Worker I

EFFECTIVE DATE

8/22/13-6/10/14

Fowler, Damone
Food and Nutrition Svcs

Production Kitchen Coordinator
Fr: Cafeteria Cook Baker

8/22/13-6/10/14

ABOLISHMENT OF POSITION

Inst Asst – Classroom
4.8 Hrs/SY; Pt. Dume ES

EFFECTIVE DATE

8/21/13

Inst Asst – Specialized
6 Hrs/SY; McKinley ES

8/21/13

Senior Office Specialist
8 Hrs/12 Mo; Special Education

9/3/13

RESIGNATION

Krause, Eliza
McKinley ES

Inst Asst – Specialized

EFFECTIVE DATE

9/20/13

Purser, Jessica
McKinley ES

Inst Asst – Special Ed

9/30/13

Sandoval, Vanessa
Child Develop Svcs-McKinley ES

Children's Center Asst

9/6/13

RETIREMENT

Ford, Ronald
Maintenance

Painter

EFFECTIVE DATE

12/30/13

MOTION MADE BY: Mr. Mechur
SECONDED BY: Dr. Escarce
STUDENT ADVISORY VOTE: Aye
AYES: All (7)
NOES: None (0)

TO: BOARD OF EDUCATION

ACTION/CONSENT

10/17/13

FROM: SANDRA LYON / DEBRA MOORE WASHINGTON /BRANDON TIETZE

RE: CLASSIFIED PERSONNEL – NON-MERIT

RECOMMENDATION NO. A.16

It is recommended that the following be approved and/or ratified for Classified Personnel (Non-Merit). All personnel assigned will be properly elected on a temporary basis to be used as needed in accordance with District policies and salary schedules.

AVID TUTOR

Barba, Eduardo	Adams MS	9/30/13-6/10/14
Cordero, Rebecca	Adams MS	9/17/13-6/10/14

COACHING ASSISTANT

Gallegos, Erika	Santa Monica HS	9/20/13-6/30/14
Hall, Rachel	Malibu HS	9/19/13-6/30/14
Padda, Ainess	Malibu HS	9/23/13-6/30/14

NOON SUPERVISION AIDE

Bonilla, Reina	Edison ES	8/21/13-6/10/14
Palacios, Veronica	Muir ES	9/11/13-6/10/14
Pates, Rodney	Franklin ES	9/25/13-6/10/14
Perez, Carmen	Franklin ES	9/25/13-6/10/14
Sanchez, Erik	Muir ES	9/20/13-6/10/14
Santin, Aura	Roosevelt ES	9/16/13-6/10/14
Yadegari, Shiva	Franklin ES	9/16/13-6/10/14

TECHNICAL SPECIALIST – LEVEL II

Call, Emily	Ed Svcs/Edison ES [Strings Coach] - Funding: Gifts	9/20/13-6/30/14
Hughes, Walter	Facility Permits [Facility Permits events] - Funding: Permits	7/1/13-6/30/14
Moerschel, Josephine	Adams MS [Music Clinician] - Funding: Tier III Programs Cat Flex	8/22/12-6/10/14
Parise, Chris	Adams MS [Music Clinician] - Funding: Tier III Programs Cat Flex	8/22/12-6/10/14
Roth, Jennifer	Adams MS [Music Clinician] - Funding: Tier III Programs Cat Flex	8/22/12-6/10/14

Senchuk, Peter	Adams MS [Music Clinician] - Funding: Gifts	8/22/12-6/10/14
Stout, Lewis	Facility Permits [Facility Permits events] - Funding: Permits	7/1/13-6/30/14
Turner, Meghan	Adams MS [Music Clinician] - Funding: Tier III Programs Cat Flex	8/22/12-6/10/14

TECHNICAL SPECIALIST – LEVEL III

Gamma, Lorenz	Ed Svcs/Santa Monica HS [Orchestra Coach] - Funding: SM Arts Parents Association	9/30/13-6/30/14
---------------	--	-----------------

STUDENT WORKER – WORKABILITY

Frelix, Macguire	Special Education	9/17/13-6/30/14
------------------	-------------------	-----------------

MOTION MADE BY: Mr. Mechur
 SECONDED BY: Dr. Escarce
 STUDENT ADVISORY VOTE: Aye
 AYES: All (7)
 NOES: None (0)

TO: BOARD OF EDUCATION

ACTION/CONSENT

10/17/13

FROM: SANDRA LYON / TERRY DELORIA / ALICE CHUNG

RE: INCREASE IN STAFFING (FTE) – CHILD DEVELOPMENT SERVICES

RECOMMENDATION NO. A.17

It is recommended that the Board of Education approve a new teacher position (0.50 FTE) for an additional School Age class in Child Development Services, in order to meet increased enrollment.

FUNDING NOTE: The 2013-2014 budget will be adjusted \$48,574 for salary and benefits.

MOTION MADE BY: Mr. Mechur
SECONDED BY: Dr. Escarce
STUDENT ADVISORY VOTE: Aye
AYES: All (7)
NOES: None (0)

TO: BOARD OF EDUCATION ACTION/CONSENT
10/17/13
FROM: SANDRA LYON / DEBRA MOORE WASHINGTON / BRANDON TIETZE
RE: REAPPOINTMENT OF PERSONNEL COMMISSIONER JOSEPH PERTEL

RECOMMENDATION NO. A.18

It is recommended that the Board of Education approve the reappointment of Joseph Pertel to the Personnel Commission for a three-year term commencing December 1, 2013, and ending November 30, 2016. It is further recommended that this recommendation be submitted to Mr. Tom Torlakson, State Superintendent of Public Instruction, for formal appointment.

COMMENTS: Commissioner Pertel, under provisions of Education Code §45244 "Qualifications for Membership on Personnel Commission," is a well-qualified Commissioner, in that he has amply met the requirements in the Education Code to be reappointed to the Personnel Commission. These requirements are: That he is a known adherent to the principles of the Merit System, which he has clearly demonstrated through meeting attendance and actions which support the Merit System and its operation.

Mr. Pertel has demonstrated through his meeting attendance and participation in the functions of the Personnel Commission that he is a qualified member. Moreover, Mr. Pertel has established himself as a thoughtful, practical, and balanced voice on the Commission.

MOTION MADE BY: Mr. Mechur
SECONDED BY: Dr. Escarce
STUDENT ADVISORY VOTE: Aye
AYES: All (7)
NOES: None (0)

DISCUSSION ITEMS

TO: BOARD OF EDUCATION

DISCUSSION

10/17/13

FROM: SANDRA LYON / TERRY DELORIA

RE: EQUITY AND ACCESS FOR STUDENT SUCCESS: FALL UPDATE

DISCUSSION ITEM NO. D.01

The District's Equity and Access for Student Success plan is designed to significantly close opportunity gaps over five years plan by focusing on four components:

1. School and District Culture
2. Teaching and Learning
3. Mentoring and Advocacy
4. Policy and Practice

An update of activities/tasks identified in the 2013-14 timeline will be presented this evening.

Public Comments:

- Reuben Branfman, Joanne Berlin, Gary Avrech, Lee Jones, Gina Frazier, Monica Sheppard, and Darya Jones addressed the board regarding this item.

Dr. Deloria's presentation can be found under Attachments at the end of these minutes. She answered board members' questions regarding the details of the plan.

The board expressed its appreciation for the district's meaningful and targeted approach. Mr. de la Torre suggested the district consider hiring a person solely responsible for cultural equity. Ms. Lyon responded that assigning culture change to one person could work against the goal of getting each teacher and administrator to internalize and be an active part in a culture change. Ms. Leon-Vazquez said the Intercultural Equity and Excellence DAC could help with these efforts. Mr. Allen asked about the Willful Defiance category associated with suspension. Dr. Deloria said Dr. Kelly will present to the board at the next meeting regarding discipline. Mr. Allen mentioned to Dr. Deloria that Spark LA partners underserved middle schoolers with leaders in the professional community in an apprentice setting. Dr. Escarce suggested the district contact RAND to see if LAUSD had updated the PTSD symptom report for students. He would like a workshop in the spring on what professional development is being offered, including who is offering it, who is receiving it, and what the results are.

TO: BOARD OF EDUCATION

DISCUSSION

10/17/13

FROM: BEN ALLEN

RE: CONSIDER ADOPTING A RESOLUTION IN SUPPORT OF REFORMING
PROPOSITION 13 AND CLOSING THE COMMERCIAL PROPERTY LOOPHOLE

DISCUSSION ITEM NO. D.02

Board Member Ben Allen would like his fellow board members to consider adopting a resolution that supports a reform of Proposition 13 and closes the loophole that allows corporations to avoid a reassessment of property.

The proposed resolution is attached.

Mr. Mechur suggested deleting the ninth Whereas and adding language to the tenth Whereas. The board agreed. This item will return for action on November 7, 2013.

**SANTA MONICA-MALIBU UNIFIED SCHOOL DISTRICT
BOARD OF EDUCATION**

RESOLUTION NO. 13-**

WHEREAS, voters in the State of California approved Proposition 13 in 1978; and

WHEREAS, Proposition 13 created limits on the property taxes paid by residential and commercial properties; and

WHEREAS, residential and commercial property values in California are reassessed upon change of ownership; and

WHEREAS, owners of commercial real estate have benefited under current reassessment rules in that if a corporation owning commercial property is sold or merged with another corporation, but the property it owns stays deeded to the corporation, ownership of the property effectively changes without triggering a reassessment of the property; and

WHEREAS, corporations often avoid reassessment of their property by limiting the portion of ownership that changes hands to ensure that no single party owns more than 50 percent; and

WHEREAS, Proposition 13 is fundamentally unfair and allows corporations to exploit loopholes to avoid paying property taxes and has shifted the tax burden to everyday homeowners and working families; and

WHEREAS, loss of revenue from corporate property taxes has led to an increase in regressive taxes and fees that hurt the most vulnerable Californians; and

WHEREAS, property taxes are a stable funding source for public schools; and

~~**WHEREAS**, since the passage of Proposition 13, the State of California has assumed a greater role in the funding of public schools; and~~

WHEREAS, since the State of California has assumed a greater role in the funding of public schools, per-pupil support has declined from the top 10 in the nation to the bottom 10, resulting in the reduction of programs in the arts, languages, and physical education; the reduction of building maintenance and refurbishment; the loss of nurses, counselors, and librarians; the substantial loss of teachers coupled with a marked increase in class-size; all of which have negatively impacted the quality of public education in California; and

WHEREAS, public schools in California face challenges educating a student population with vast differences in language, poverty, parental education level, and other social, educational, and economic factors; and

WHEREAS, modifying the method of reassessing commercial property would net needed additional resources for public schools;

THEREFORE BE IT RESOLVED that the Santa Monica-Malibu Unified School District Board of Education supports efforts to modify how the value of commercial properties in California are reassessed to allow for more regular commercial property value reassessment; and

BE IT FURTHER RESOLVED that the Santa Monica-Malibu Unified School District Board of Education supports this effort while protecting existing protections provided to residential properties; and

BE IT FURTHER RESOLVED that tax revenues generated by modernizing how commercial property is reassessed benefit public schools and not accrue to the State of California as General Fund savings; and

BE IT FURTHER RESOLVED that the Board of Education will communicate this position to elected officials.

APPROVED and ADOPTED this 17th day of October 2013 by the Santa Monica-Malibu Board of Education by the following vote:

AYES:

NOES:

ABSTAIN:

ABSENT:

LAURIE LIEBERMAN
Board of Education President

Date

SANDRA LYON
Superintendent and Secretary
to the Board of Education

Date

MAJOR ITEMS

TO: BOARD OF EDUCATION

ACTION/MAJOR

10/17/13

FROM: SANDRA LYON / TERRY DELORIA / DEBRA MOORE WASHINGTON

RE: ESTABLISH POSITION – ELEMENTARY LITERACY COACH

RECOMMENDATION NO. A.19

It is recommended that the Board of Education establish a new position, Elementary Literacy Coach, in order to better serve the needs of District students and facilitate the implementation of the District's Vision for Student Success Plan.

COMMENT: The Elementary Literacy Coach will support all Pre-K-5 staff in the implementation of site goals for the Common Core State Standards (CCSS) in reading and Response to Instruction and Intervention (RTI²). The Coach will work directly with all teachers at a school site, providing classroom-based demonstrations and one-to-one, non-evaluative instructional support. This position will also facilitate teacher inquiry and related professional development. In collaboration with teachers, the Coach will assist with the planning and implementation of small group instruction, as a part of the school's RTI² plan. (See attached job description.)

For the 2013-14 school year, there will be one (1) Elementary Literacy Coach position. In accordance with the District's Vision for Student Success Plan, additional positions will be funded for the 2014-15 school year.

The position will have a teacher work year (183 days) and salary will be determined by appropriate placement on the SMMUSD Certificated Teaching/Counseling Salary Schedule. The 2013-2014 budget will be adjusted for the salary and benefits for this position. Funding Source: Title I

MOTION MADE BY: Mr. Mechur
SECONDED BY: Dr. Escarce
STUDENT ADVISORY VOTE: N/A
AYES: All (7)
NOES: None (0)

SANTA MONICA-MALIBU UNIFIED SCHOOL DISTRICT

Department of Human Resources

CERTIFICATED JOB DESCRIPTION ELEMENTARY LITERACY COACH

DEFINITION

Under the general direction of the Assistant Superintendent, Educational Services or designee, the Elementary Literacy Coach will support Pre-K-5 staff in the implementation of site goals for Common Core State Standards (CCSS) in reading and Response to Instruction and Intervention (RTI²). The Coach will work directly with teachers at a school, providing classroom-based demonstrations and one-on-one, non-evaluative instructional support. He/She will also facilitate teacher inquiry and related professional development. In collaboration with teachers, the Coach will assist with the planning and implementation of small group instruction as part of the school's RTI² plan. The Coach will be a member of all classroom data teams (Principal and/or designee, the school psychologist and a classroom teacher) to collect, analyze and interpret data for the purpose of guiding instructional decisions related to student achievement in reading.

DISTINGUISHING CHARACTERISTICS

This position classification requires knowledge, experience, and expertise in the areas of reading, writing and literacy development. The position requires decision-making and problem-solving through data analysis/interpretation and an understanding of Common Core State Standards in reading and RTI². The Elementary Literacy Coach meets regularly with school administrators, teachers, and other District staff.

Reasonable accommodation may be made to enable a person with a disability to perform the essential functions of the job.

EXAMPLES OF DUTIES

- Support teachers in collecting and analyzing data, and in developing action plans for both classroom and individual student needs;
- Provide individualized, classroom-based support in reading and RTI². This includes modeling of best teaching practices;
- Work with Principals to create a school-wide professional development plan on the CCSS and reading achievement;
- As related to reading, oversee the school's universal screening and progress-monitoring procedures, training, and data collection;
- Participate in classroom data teams along with the Principal, the school psychologist and the teacher to develop and monitor individual learning plans for striving students;
- Support classroom teachers in planning and implementing small group instruction related to RTI²;
- Participate fully in professional development opportunities, action research and professional reading;
- Work with the Educational Services team to plan for the implementation of Elementary Literacy Coaches at all PreK-5 schools in the 2014-15 school year, as required by the Vision for Student Success;
- May provide pull-out, push-in or after-school reading intervention;
- Other duties, as assigned by the Assistant Superintendent, Educational Services or designee.

QUALIFICATIONS

Knowledge of:

1. Reading, writing and literacy development,
2. Common Core State Standards, RTI², and current programs, techniques, strategies, and resources in reading and literacy development,
3. Effective Professional Development programs in the area of reading and literacy,
4. Successful modeling of best teaching practices,
5. Data collection and record keeping.

Skills/Abilities:

1. Outstanding presentation and facilitation skills,
2. Strong interpersonal skills (communication, problem-solving, conflict management, and collaboration);
3. Ability to effectively share research-based instructional approaches with staff;
4. Skilled in mentoring and coaching classroom teachers,
5. Strong organizational skills,
6. Communicate effectively, in oral and written form,
7. Utilize technology effectively, using word processing, spreadsheet, database and presentation software.

EDUCATION AND EXPERIENCE

A Multiple-Subject, elementary teaching credential is required.

Education:

Master's Degree preferred. Reading credential or Master's Degree in Reading desired.

Experience:

Minimum of five (5) years of successful teaching at the elementary level (in SMMUSD). Experience as a reading teacher or National Board Certified teacher is desired.

CERTIFICATIONS, LICENSES AND CONDITIONS

Certification Requirement

Possession of a valid Multiple-Subject, elementary teaching credential

License Requirement

Possession of a valid Motor Vehicle Operator's License

Condition of Employment

Insurability by the District's liability insurance carrier

PHYSICAL REQUIREMENTS AND WORKING CONDITIONS:

- Candidates must be able to perform essential duties with or without reasonable accommodation
- This is a sedentary position classification with light work that involves sitting a portion of the time, and includes walking and standing for extended periods

- Requires the mobility to stand, stoop, balance, reach, kneel and bend. Requires mobility or arms to reach and dexterity of hands and fingers needed to operate a computer keyboard
- May require the need to push, pull or lift up to 20 pounds
- The job also requires the accurate perceiving of sound, near and far vision, depth perception, handling and working with educational materials and objects, and providing oral information and direction.

This position will have a work year of 183 days, and be compensated based on the SMMUSD Certificated Teaching/Counseling Salary Schedule.

Job Description Board Approved: _____

TO: BOARD OF EDUCATION

ACTION/MAJOR

10/17/13

FROM: SANDRA LYON

RE: APPROVE CHARGES FOR DISTRICT ADVISORY COMMITTEES – 2013-14

RECOMMENDATION NO. A.20

It is recommended that the Board of Education approve the charges/goals for the following district advisory committee for 2013-14: Special Education DAC. The charges for the Early Child Care, District English Learners, Health and Safety, Intercultural Equity and Excellence, and Visual and Performing Arts DACs were approved at the at the October 3 meeting.

COMMENTS: The Board of Education discussed the draft charges with the DACs during the summer. The DACs then made any necessary changes to their draft charges based on board feedback.

As per AR 1220, the DAC staff liaisons and committee chairpersons shall provide the Board of Education with an update regarding the process of meeting these charges/goals in an informational item to the board at a regular meeting no later than February. No later than June, the DACs shall make an End-of-Year report to the Board of Education regarding the achievement of its charges/goals.

The current District Advisory Committees and their respective district staff liaison are as follows:

District Advisory Committee	Staff Liaison
Child Care and Development	Alice Chung
English Learners Advisory	Aida Diaz
Health and Safety	Mark Kelly
Intercultural Equity & Excellence	Debra Moore Washington Aida Diaz
Special Education	Sara Woolverton
Visual & Performing Arts	Tom Whaley

Mr. Mechur, the board liaison to SEDAC, announced a change to Charge 1: Continue to research on the availability of post-IEP parent surveys and review districtwide surveys related to SEDAC issues.

MOTION MADE BY: Ms. Leon-Vazquez

SECONDED BY: Dr. Escarce

STUDENT ADVISORY VOTE: Aye

AYES: All (6) (Mr. de la Torre was absent)

NOES: None (0)

SPECIAL EDUCATION DISTRICT ADVISORY COMMITTEE
Charges for 2013-14

Chair: Lee Jones

Staff Liaison: Sara Woolverton

Charges:

The charges of the Special Education District Advisory Committee shall be to:

- Advise the Board of Education about attitudes, opinions and issues significant to the Special Education community
 - A. Hold monthly meetings open to the public and provide Spanish translation when needed
 - B. Act as a conduit for flow of information between the Special Education community at large and the Board of Education.
 - C. Continue to bring parent's questions and concerns to the BOE regarding curriculum and programs in math, literacy, reading and autism.
 - D. Provide a forum for District staff and other speakers to share information relevant to the Special Education community
 - E. To enhance District-wide outreach to Special Education parents, continue the practice of rotating meeting locations to include school sites
 - F. To address topical concerns utilizing subcommittees, either Ad Hoc and/or Standing Committees, as defined by the Brown Act.
 - G. Continue to review the Special Education budget with the District's Chief Financial Officer utilizing CFO's recently created Special Education specific reporting format.

Charge One

Continue to research on the availability of post-IEP parent surveys and review districtwide surveys related to SEDAC issues. Collaborate with district staff and third party on Post IEP Parent Satisfaction Survey.

Charge Two

Give input to the deputy superintendent of the technology committee to jointly consider strategies to reduce digital divide.

Charge Three

Update and expand the pre-school eligibility assessment, placement and program information for the pre-school section of The Parent Handbook.

Charge Four

Complete the Parent to Parent Transition Plan for high school students by presenting to the BOE and arranging for distribution to parents and high school students.

Charge Five

Review information and assist in increasing communication with parents regarding District programs, LCFF (Local Control Funding Formula), Common Core and the Vision for Student Success and how they each will impact Special Education Services in the District.

ATTACHMENTS

ATTACHED ARE THE FOLLOWING DOCUMENTS:

- Presentation: “Enrollment: 2013-14” (*associated with Item No. S.01*)
- Presentation: “Equity and Access for Student Success” (*associated with Item No. D.01*)

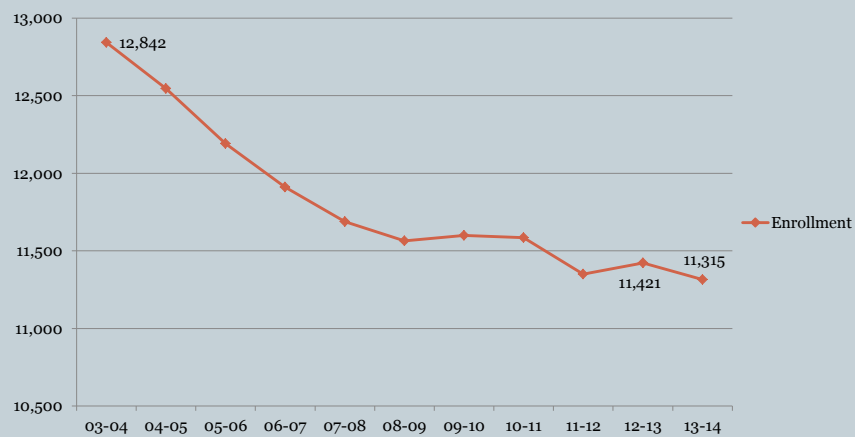
Enrollment 2013-14



OCTOBER 17, 2013

Enrollment – 2004 to 2013

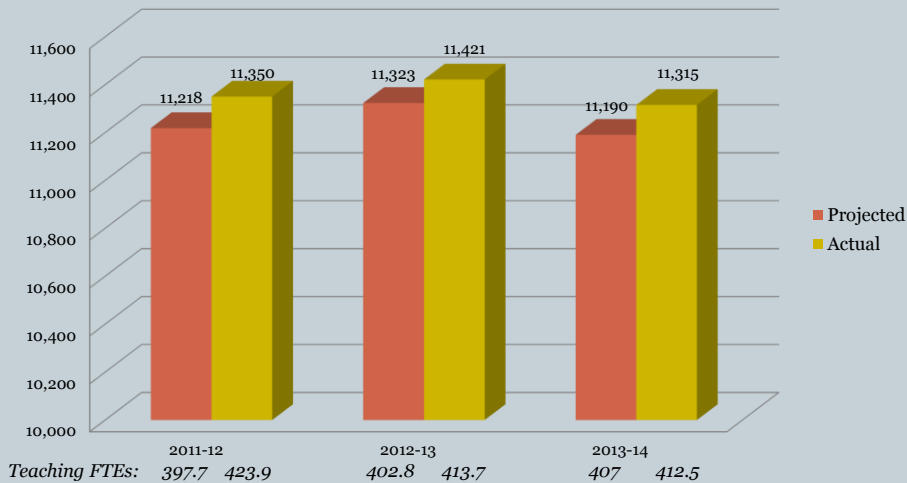
2



Note: Data as of September 30, 2013; includes SDC

Enrollment Projections vs. Actuals

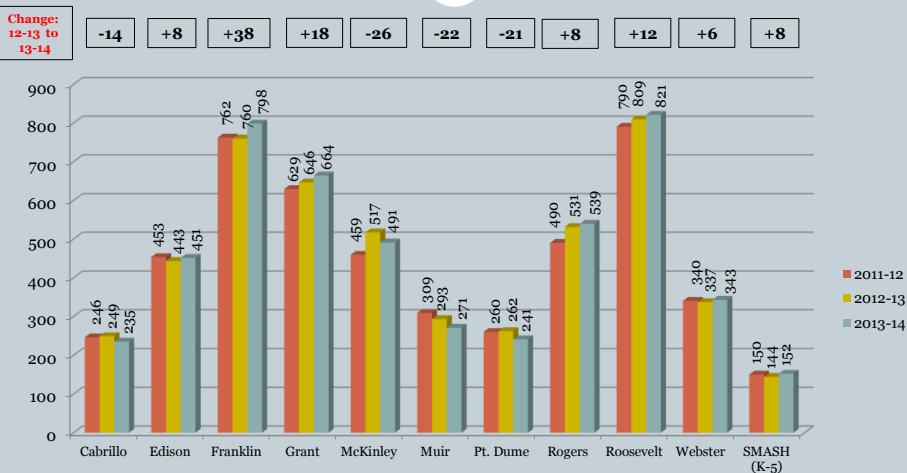
3



Note: Preliminary data as of September 30, 2013; includes SDC enrollment

Enrollment – Elementary Schools

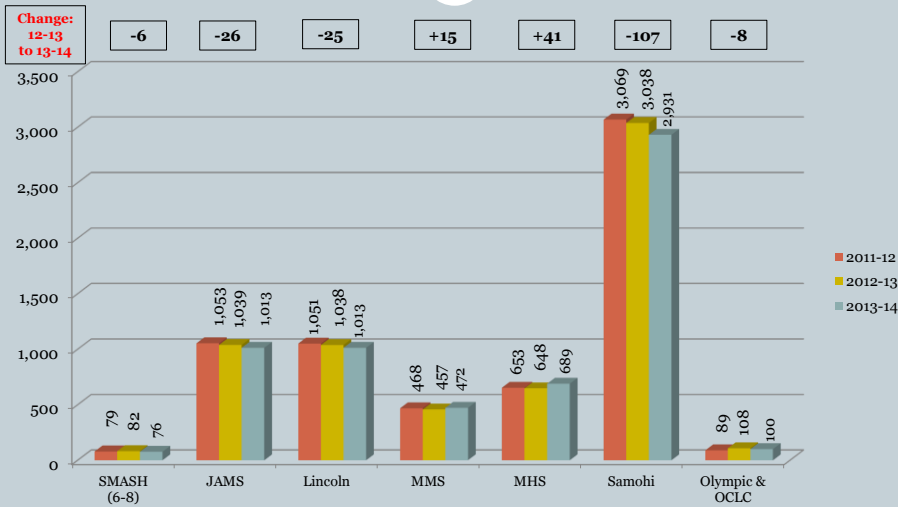
4



Note: Data as of September 30, 2013; includes SDC

Enrollment – Secondary Schools

5



Projected vs. Actual Staffing – JAMS Pathway

Adjustments Made in April, June, Sept. 2013

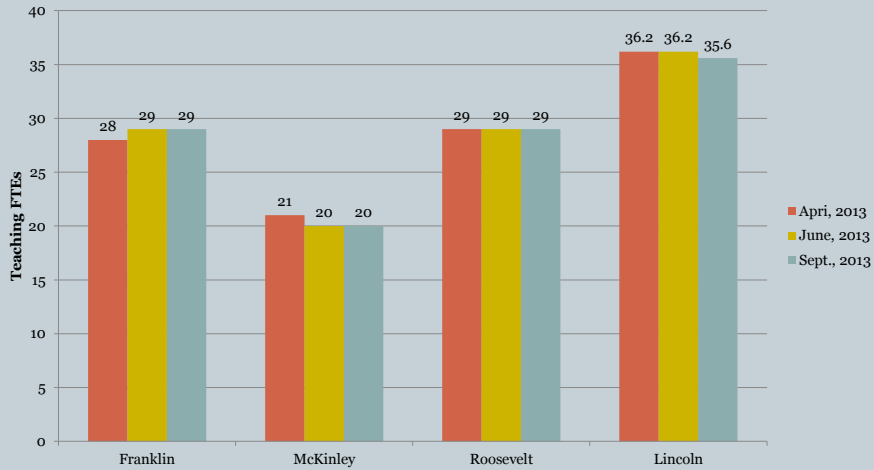
6



Projected vs. Actual Staffing – LMS Pathway

Adjustments Made in April, June, Sept. 2013

7



Note: Data as of September 30, 2013

Projected vs. Actual Staffing – MHS Pathway

Adjustments Made in April, June, Sept. 2013

8

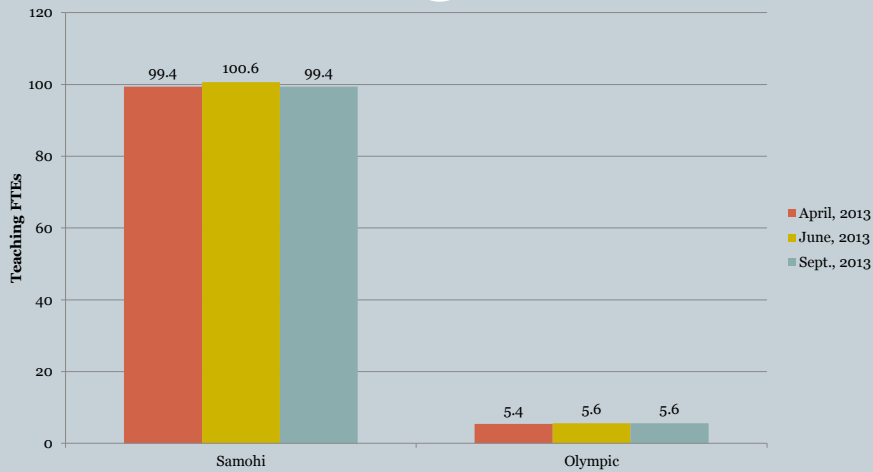


Note: Data as of September 30, 2013

Projected vs. Actual Staffing – Samohi & Olmypic

Adjustments Made in April, June, Sept. 2013

9



Note: Data as of September 30, 2013

Staffing Calculator – Chart 4

10

		Staffing Calculator																							
		DECISION INSITE																							
		(This calculator computes the Allocated FTE for each school based on the projected enrollment.)																							
		Staffing Variables																							
Variable		K	1	2	3	4	5	6	7	8	9	10	11	12											
Average Class Size		25	25	30	30	30	30	30	35	35	35	36	36	36	36										
Courses/student ms & hs:									6	6	6	6	6	6	6										
Courses/teacher ms & hs:									5	5	5	5	5	5	5										
HS CSR Course Count:																									
HS CSR Class Size:																									
Grade 6 Configuration																									
Enrollment Projections Fall 2013 Santa Monica-Malibu Unified School District (SMM13Cnsv)																									
School Name		K	1	2	3	4	5	6	7	8	9	10	11	12	Subttl	SDC	Total	Open Seats	Alloc FTE	Manual Adjust	SP				
Edison		77	80	75	78	78	83								451		451	-451	18.0	0.4	B				
Franklin		141	130	126	131	128	122								778		778	-778	29.0	1.3	A				
Grant		90	99	115	108	115	119								644		644	-644	24.0	1.3	A				
John Muir		42	48	44	30	48	47								259		259	-259	11.0	0.9	B				
Juan Cabrillo		32	31	37	37	44	46								227		227	-227	9.0	1.0	A				
McKinley		104	78	85	81	73	76								477		477	-477	20.0	1.4	B				
Point Dume		40	41	24	40	48	46								239		239	-239	9.0	0.5	A				
Roosevelt		128	150	129	131	149	124								811		811	-811	29.0	0.1	A				
Webster		59	72	65	45	63	69								373		373	-373	13.0	-0.3	A				
Will Rogers		144	87	82	76	78	85								562		562	-562	23.6	1.6	B				
John Adams Middle								311	325	337					973		973	-973	36.4	1.0	C				
Lincoln Middle								314	326	337					977		977	-977	34.8	1.3	A				
Malibu 6-8								173	150	144					467		467	-467	16.2	0.2	A				
Santa Monica Alternative		25	25	26	25	25	26	25	25	26	24				227		227	-227	8.5	0.5	A				
Malibu High											178	183	141	170	670		670	-670	25.2	2.9	A				
Olympic High (Continuation)											4	31	59	94	94		-94	5.6	2.5	A					
Santa Monica High											677	753	729	674	2833		2833	-2833	98.8	4.4	A				
Total		892	941	918	760	949	923	923	927	942	953	940	901	903	11062		11062	-11062	411.3						

DRAFT Four plus Sept 4 enrollment.

This version includes the following: Round up for elementary; minor change to adjustments for secondary; adds 25 students to K--adds a sixth K at Franklin; adds 50 students to each Rogers and McKinley to adjust for one full TK at 25 and one additional K at 25; add s 25 for TK Webster;

adds 2.5 for Malibu Small School, 8 chairs, 2 calc dc, 2 calc bc, 4 up, 2 art, 2 essentials, 2 old, 4 humanities; adds 2.4 to SAMO for Dept Chairs and AVID;

adjusts for Edison and for Rogers, 6 stem incl in 1.0 adjust; adds 1.0 to Jams and Lincoln for Core classes and .5 to SMASH;

Staffing Profiles for A B and C tabs have been properly added; adds additional .6 to Samohi for ELD, SPANISH class size -total add 1.8;

adds 1.0 to both Cabrillo and Pt Dume adds 1.0 to Malibu Middle and High due to increased enrollment;

Will Adjust entire chart to illuminate numbers after Sept 3 count

August 26, 2013

Staffing Historical Ratios *

11

	2008-09	2009-10	2010-11	2011-12	2012-13	2013-14
K-1	20:1	23:1	23:1 (K)	25:1	25:1	25:1
2-3	20:1	23:1	25:1 (1-3)	25:1	30:1	30:1
2-3 (Title I)					25:1	25:1
4-5	30:1	30:1	30:1	30:1	30:1	30:1
4-5 Title I	25:1	25:1	27:1	27:1	27:1	27:1
6-8	31:1	32:1	35:1	35:1	35:1	35:1
6-8 (JAMS)	29:1	30:1	33:1	33:1	33:1	33:1
9-12	31:1	32:1	35:1	35:1	36:1	36:1

* Classes are balanced from these staffing ratios

Site-Based Staffing Decisions

12

Principals work with site staff to create a master schedule that accommodates site needs. Philosophies and strategies used include:

1. Preference for schools of residency placement
2. Counselors and management create skeleton schedules
3. Students select courses
4. Teachers provide preferences for subjects and grade levels taught
5. Grade level or subject area meetings held to determine initial student placements
6. Consideration of singleton, elective and combination classes
7. Consideration of Core, looping and special programs
8. Balancing of classes

SMMCTA Contract Language - A

13

- *“Whenever administratively practical and whenever the District’s financial resources allow and facilities permit, the District shall make every effort to maintain elementary classes at thirty (30) or less...maintain middle school classes at thirty-four (34) or less, and high school classes at thirty-five (35) or less...” (Article VIII.A.1, 2)*

SMMCTA Contract Language - B

14

- *Schools will have three (3) weeks to balance their classes and conform to the above class-size standards. The District will make every effort to do this within two (2) weeks. At any time during the school year when new students enroll, every effort will be made to provide an equitable distribution of students.” (Article VIII.A.5)*

SMMCTA Contract Language - C

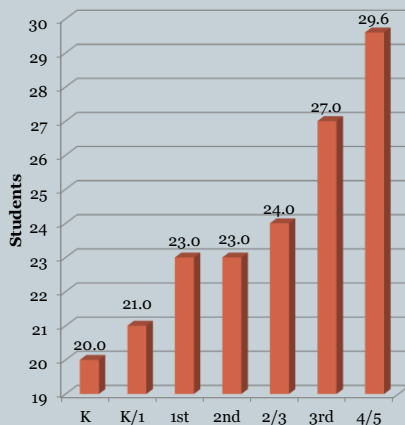
15

- “In those situations where, after classes have been balanced pursuant to Paragraph A.3, the administration has found it necessary to exceed the above limitations for reasons other than financial and/or facility limits, the Administration shall, upon request of the affected teacher(s), meet with them and the Association Representative to discuss the reasons, and then, upon request, put the reasons for the final decision in writing. Possible solutions could include but not be limited to the use of instructional aide time. Other approaches of equivalent cost that reduce the adult to student ratio are acceptable.” (Article VIII.A.6-6a)*

Class Size – Cabrillo Elementary

16

Class Size Averages



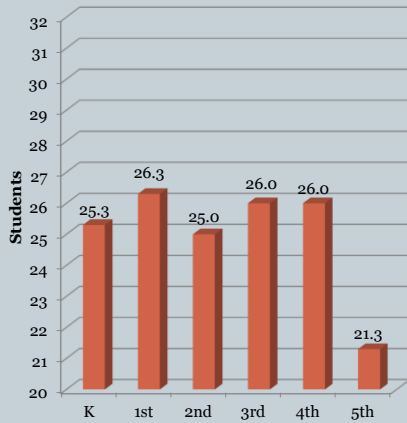
Kindergarten	Class Size	2 nd /3 rd Combo	Class Size
Class A	20	Class A	24
K/1 st Combo	Class Size	3 rd Grade	Class Size
Class A	21	Class A	27
1 st Grade	Class Size	4 th /5 th Combo	Class Size
Class A	23	Class A	30
2 nd Grade	Class Size	Class B	29
Class A	23	Class C	30

Source: Illuminate - September 30, 2013

Class Size – Edison Language Academy

17

Class Size Averages



Kindergarten	Class Size
Class A	26
Class B	24
Class C	26

1st Grade	Class Size
Class A	27
Class B	25
Class C	27

2nd Grade	Class Size
Class A	25
Class B	25
Class C	25

3rd Grade	Class Size
Class A	26
Class B	26
Class C	26

4th Grade	Class Size
Class A	26
Class B	26
Class C	26

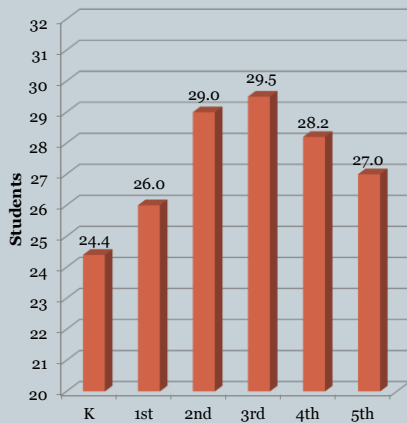
5th Grade	Class Size
Class A	22
Class B	21
Class C	21

Source: Illuminate - September 30, 2013

Class Size – Franklin Elementary

18

Class Size Averages



Kindergarten	Class Size
Class A	25
Class B	24
Class C	24
Class D	24
Class E	25

1st Grade	Class Size
Class A	27
Class B	27
Class C	25
Class D	26
Class E	25

2nd Grade	Class Size
Class A	29
Class B	29
Class C	29
Class D	29
Class E	29

3rd Grade	Class Size
Class A	29
Class B	30
Class C	30
Class D	29

4th Grade	Class Size
Class A	28
Class B	29
Class C	29
Class D	26
Class E	29

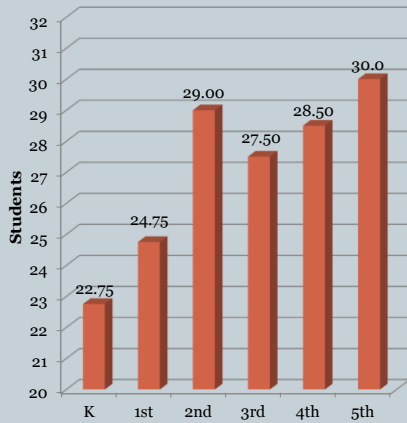
5th Grade	Class Size
Class A	27
Class B	28
Class C	25
Class D	28

Source: Illuminate - September 30, 2013

Class Size – Grant Elementary

19

Class Size Averages



Kindergarten	Class Size
Class A	21
Class B	24
Class C	22
Class D	24

1 st Grade	Class Size
Class A	25
Class B	25
Class C	26
Class D	23

2 nd Grade	Class Size
Class A	30
Class B	28
Class C	29
Class D	29

3 rd Grade	Class Size
Class A	25
Class B	27
Class C	28
Class D	27

4 th Grade	Class Size
Class A	28
Class B	28
Class C	30
Class D	28

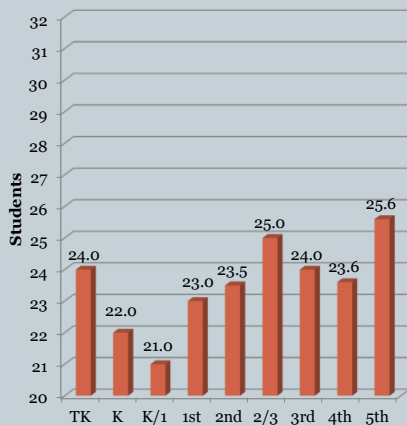
5 th Grade	Class Size
Class A	29
Class B	29
Class C	30
Class D	32

Source: Illuminate - September 30, 2013

Class Size – McKinley Elementary

20

Class Size Averages



Transitional Kindergarten	Class Size
Class A	24

Kindergarten	Class Size
Class A	23
Class B	22
Class C	21

K/1 st Combo	Class Size
Class A	21

1 st Grade	Class Size
Class A	22
Class B	23
Class C	24

2 nd Grade	Class Size
Class A	23
Class B	24
Class C	23

2 nd / 3 rd Combo	Class Size
Class A	25

3 rd Grade	Class Size
Class A	24
Class B	24

4 th Grade	Class Size
Class A	23
Class B	23
Class C	25

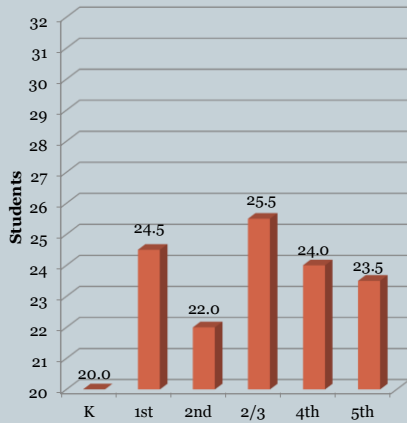
5 th Grade	Class Size
Class A	25
Class B	26
Class C	26

Source: Illuminate - September 30, 2013

Class Size – Muir Elementary

21

Class Size Averages



Kindergarten	Class Size
Class A	19
Class B	21
1 st Grade	Class Size
Class A	25
Class B	24
2 nd Grade	Class Size
Class A	22

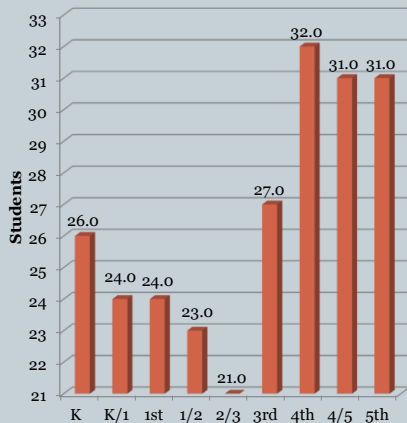
2 nd /3 rd Combo	Class Size
Class A	25
Class B	26
4 th Grade	Class Size
Class A	24
Class B	24
5 th Grade	Class Size
Class A	23
Class B	24

Source: Illuminate - September 30, 2013

Class Size – Pt. Dume Elementary

22

Class Size Averages



Kindergarten	Class Size
Class A	26
K/1 st Combo	Class Size
Class A	24
1 st Grade	Class Size
Class A	24
1 st /2 nd Combo	Class Size
Class A	23

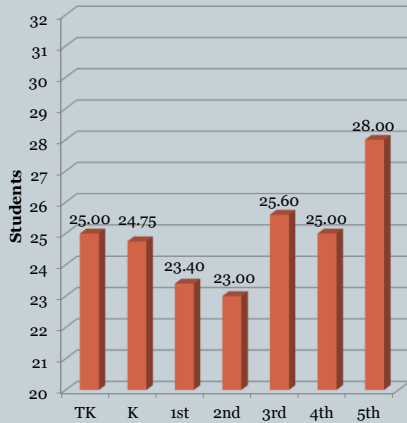
2 nd /3 rd Combo	Class Size
Class A	21
3 rd Grade	Class Size
Class A	27
4 th Grade	Class Size
Class A	32
4 th /5 th Combo	Class Size
Class A	31
5 th Grade	Class Size
Class A	31

Source: Illuminate - September 30, 2013

Class Size – Rogers Elementary

23

Class Size Averages



Transitional Kindergarten	Class Size
Class A	25
Kindergarten	Class Size
Class A	26
Class B	24
Class C	25
Class D	24
1 st Grade	Class Size
Class A	22
Class B	23
Class C	21
Class D	22
2 nd Grade	Class Size
Class A	25
Class B	24
Class C	21
Class D	22

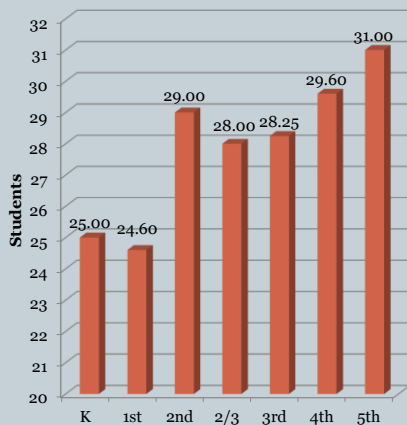
3 rd Grade	Class Size
Class A	25
Class B	27
Class C	25
4 th Grade	Class Size
Class A	26
Class B	25
Class C	24
5 th Grade	Class Size
Class A	28
Class B	27
Class C	29

Source: Illuminate - September 30, 2013

Class Size – Roosevelt Elementary

24

Class Size Averages



Kindergarten	Class Size
Class A	25
Class B	25
Class C	25
Class D	25
Class E	25
1 st Grade	Class Size
Class A	25
Class B	24
Class C	25
Class D	25
Class E	25
Class F	24
2 nd Grade	Class Size
Class A	28
Class B	29
Class C	30
Class D	29

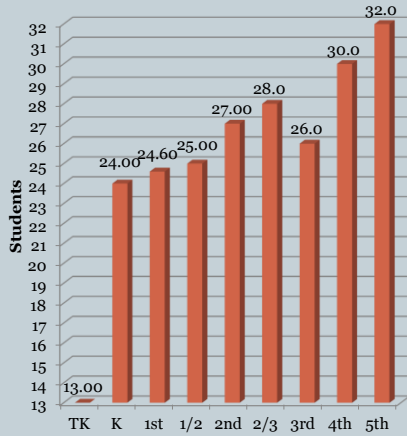
2 nd /3 rd Combo	Class Size
Class A	28
3 rd Grade	Class Size
Class A	26
Class B	29
Class C	30
Class D	28
4 th Grade	Class Size
Class A	30
Class B	29
Class C	30
Class D	29
Class E	30
5 th Grade	Class Size
Class A	31
Class B	31
Class C	31
Class D	31

Source: Illuminate - September 30, 2013

Class Size – Webster Elementary

25

Class Size Averages



Transitional Kindergarten	Class Size
Class A	13
Kindergarten	Class Size
Class A	23
Class B	25
1st Grade	Class Size
Class A	26
Class B	24
Class C	24
1st/2nd Combo	Class Size
Class A	25
2nd Grade	Class Size
Class A	27

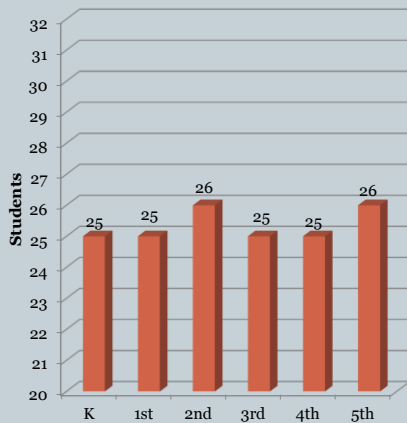
2nd/3rd Combo	Class Size
Class A	28
3rd Grade	Class Size
Class A	26
4th Grade	Class Size
Class A	28
Class B	32
5th Grade	Class Size
Class A	33
Class B	31

Source: Illuminate - September 30, 2013

Class Size – SMASH

26

Class Size Averages



Kindergarten	Class Size
Class A	25
1st Grade	Class Size
Class A	25
2nd Grade	Class Size
Class A	26

3rd Grade	Class Size
Class A	25
4th Grade	Class Size
Class A	25
5th Grade	Class Size
Class A	26

Source: Illuminate - September 30, 2013

2013-14 Core Class Enrollment Count
Balanced at 35:1
John Adams Middle School

27

English/ Humanities 31 Classes		Math 32 Classes		Foreign Language 6 Classes	
Students Enrolled	Number of Classes	Students Enrolled	Number of Classes	Students Enrolled	Number of Classes
Below 35	17	Below 35	23	Below 35	4
At 35	7	At 35	2	At 35	1
36	7	36	7	36	1
37	0	37	0	37	0
38	0	38	0	38	0
39	0	39	0	39	0
Social Studies 20 Classes		Science 29 Classes		Teachers over Student Contact Ratio of 35:1	
Students Enrolled	Number of Classes	Students Enrolled	Number of Classes	English	0
Below 35	13	Below 35	14	Math	0
At 35	1	At 35	5	Foreign Language	0
36	6	36	9	Social Studies	0
37	0	37	1	Science	1
38	0	38	0		
39	0	39	0		

* Based on September 30, 2013 Master Schedule; 35:1 Class Load Ratio for grades 6-8

2013-14 Core Class Enrollment Count
Balanced at 35:1
Lincoln Middle School

28

English/ Humanities 29 Classes		Math 34 Classes		Foreign Language 2 Classes	
Students Enrolled	Number of Classes	Students Enrolled	Number of Classes	Students Enrolled	Number of Classes
Below 35	26	Below 35	30	Below 35	1
At 35	3	At 35	2	At 35	1
36	0	36	2	36	0
37	0	37	0	37	0
38	0	38	0	38	0
39	0	39	0	39	0
Social Studies 29 Classes		Science 29 Classes		Teachers over Student Contact Ratio of 35:1	
Students Enrolled	Number of Classes	Students Enrolled	Number of Classes	English	0
Below 35	19	Below 35	19	Math	0
At 35	6	At 35	7	Foreign Language	0
36	4	36	3	Social Studies	0
37	0	37	0	Science	0
38	0	38	0		
39	0	39	0		

* Based on September 30, 2013 Master Schedule; 35:1 Class Load Ratio for grades 6-8

2013-14 Core Class Enrollment Count
Balanced at 35:1
Malibu Middle School

29

English / Humanities 15 Classes		Math 14 Classes		Foreign Language 4 Classes	
Students Enrolled	Number of Classes	Students Enrolled	Number of Classes	Students Enrolled	Number of Classes
Below 35	13	Below 35	13	Below 35	4
At 35	2	At 35	1	At 35	0
36	0	36	0	36	0
37	0	37	0	37	0
38	0	38	0	38	0
39	0	39	0	39	0
Social Studies 9 Classes		Science 13 Classes		Teachers over Student Contact Ratio of 35:1	
Students Enrolled	Number of Classes	Students Enrolled	Number of Classes		
Below 35	0	Below 35	3	English	0
At 35	1	At 35	1	Math	0
36	3	36	4	Foreign Language	0
37	2	37	1	Social Studies	1
38	2	38	3	Science	0
39	1	39	1		

* Based on September 30, 2013 Master Schedule; 35:1 Class Load Ratio for grades 6-8

2013-14 Core Class Enrollment Count
Balanced at 35:1
Malibu High School

30

English 22 Classes		Math 22 Classes		Foreign Language 16 Classes	
Students Enrolled	Number of Classes	Students Enrolled	Number of Classes	Students Enrolled	Number of Classes
Below 35	12	Below 35	17	Below 35	12
At 35	2	At 35	1	At 35	0
36	2	36	1	36	2
37	4	37	1	37	1
38	1	38	0	38	0
39	0	39	1	39	1
40	0	40	0	40	0
42	1	41	1	41	0
Social Studies 24 Classes		Science 16 Classes		Teachers over Student Contact Ratio of 35:1	
Students Enrolled	Number of Classes	Students Enrolled	Number of Classes		
Below 35	15	Below 35	9	English	1
At 35	1	At 35	2	Math	0
36	1	36	1	Foreign Language	0
37	2	37	1	Social Studies	0
38	1	38	0	Science	1
39	2	39	1		
40	1	40	0		
41	1	41	2		

* Based on September 30, 2013 Master Schedule; 36:1 Class Load Ratio for grades 9-12

Breakdown of Math Enrollment Count– Malibu HS

31

Teacher A:	Geometry	30	Teacher E:	Algebra II	34
				Algebra P	37
Teacher B:	Algebra II	35		Geometry HP	36
	Algebra	25		Calculus AB AP	34
	Statistics	39			
	Algebra II	25	Teacher F:	PreCalc HP	15
	Statistics	41		Calculus BC AP	23
				Calculus DE	10
Teacher C:	Geometry	25			
	Geometry	28			
	Geometry	23			
Teacher D:	Algebra II HP	25			
	Algebra II HP	24			
	PreCalc	29			
	PreCalc	33			
	Algebra II	27			
	PreCalc	24			

2013-14 Core Class Enrollment Count

Balanced at 35:1*

Santa Monica High School

32

English 89 Classes		Math 89 Classes		Foreign Language 68 Classes	
Students Enrolled	Number of Classes	Students Enrolled	Number of Classes	Students Enrolled	Number of Classes
Below 35	38	Below 35	31	Below 35	49
At 35	9	At 35	15	At 35	5
36	15	36	16	36	9
37	15	37	14	37	4
38	11	38	12	38	1
39	1	39	1	39	0
40	0	40	0	40	0
Social Studies 88 Classes		Science 73 Classes		Teachers over Student Contact Ratio of 35:1	
Students Enrolled	Number of Classes	Students Enrolled	Number of Classes	Over Ratio of 36:1	
Below 35	35	Below 35	38	English	2
At 35	11	At 35	8	Math	6
36	17	36	13	Foreign Language	0
37	19	37	7	Social Studies	5
38	5	38	6	Science	2
39	1	39	1	Total	15
40	0	40	0		1

* Based on September 30, 2013 Master Schedule; 36:1 Class Load Ratio for grades 9-12

Breakdown of Math Enrollment Count - Samohi

Teacher A	Geometry	32	Teacher H	Geometry	25	Teacher O	Calculus AB	29
	Algebra II	36		Geometry	36		Algebra II	37
	Algebra II	36		Algebra	36		Calculus AB	30
Teacher B	Algebra	36	Teacher I	Geometry	36	Teacher P	Calculus AB	23
	Algebra	36		Geometry	36		Algebra II	36
	Geometry	35		Algebra II	38		Calculus BC -AP	29
Teacher C	Geometry	32	Teacher J	Geometry HP	36	Teacher Q	PreCalc/Calc	37
	Geometry	32		Geometry	36		PreCalc/Calc	38
	Algebra II HP	32		Geometry	32		PreCalc/Calc	37
Teacher D	Algebra II	22	Teacher K	Geometry HP	35	Teacher R	Calculus BC -AP	34
	Algebra II HP	29		Algebra	35		PreCalc/Trig	30
	Algebra II HP	34		Geometry	26		PreCalc/Trig	38
Teacher E	Algebra II HP	33	Teacher L	Geometry HP	35	Teacher S	PreCalc/Trig	36
	Geometry	31		Geometry	37		Algebra II	38
	Statistics	35		Geometry	25		Geometry	25
Teacher F	Statistics	33	Teacher M	Geometry	36	Teacher T	PreCalc/Trig	38
	Algebra	36		Geometry	35		PreCalc/Trig	38
	Algebra	35		Algebra	26		PreCalc/Trig	38
Teacher G	Algebra II	37	Teacher N	Geometry HP	37	Teacher S	PreCalc/Trig	38
	Algebra II HP	38		Geometry HP	39		PreCalc/Calc HP	21
	Algebra II HP	35		Geometry	37		PreCalc/Calc HP	36
Teacher H	Algebra	35	Teacher O	Geometry HP	36	Teacher P	Algebra II	37
	Algebra	35		Geometry HP	33		PreCalc/Calc HP	34
	PreCalc/Trig	37		Statistics AP	35		Algebra II	37
Teacher I	Algebra II	38	Teacher J	Statistics	35	Teacher Q	Calculus DE	28
	Algebra II	38		Statistics AP	35		Calculus BC	25
	Algebra	21		Statistics AP	36		Calculus BC	27
Teacher J	Algebra	37	Teacher K	Statistics AP	35	Teacher R	Algebra II	36
	Algebra	36					Algebra II HP	30

33

Interdistrict Permits Granted, Fall 2013

Santa Monica Elementary Schools

34

Franklin	K	1st	2nd	3rd	4th	5th	Total
2013 - 2014	4	0	3	2	0	1	10
2012 - 2013	1	1	2	0	0	0	4
Difference		-1	1	2	0	1	6
Grant	K	1st	2nd	3rd	4th	5th	Total
2013 - 2014	5	2	2	5	2	1	17
2012 - 2013	8	0	2	1	4	0	15
Difference	-3	2	0	4	-2	1	2
McKinley	TK/K	1st	2nd	3rd	4th	5th	Total
2013 - 2014	10	1	0	0	1	0	12
2012 - 2013	21	2	3	0	1	0	27
Difference	-11	-1	-3	0	0	0	-15
John Muir	K	1st	2nd	3rd	4th	5th	Total
2013 - 2014	7	0	3	1	0	2	13
2012 - 2013	3	0	0	0	5	2	10
Difference	4	0	3	1	-5	0	3
Will Rogers	TK/K	1st	2nd	3rd	4th	5th	Total
2013 - 2014	20	3	2	1	1	0	27
2012 - 2013	30	7	0	6	0	1	44
Difference	-10	-4	2	-5	1	-1	-17
Roosevelt	K	1st	2nd	3rd	4th	5th	Total
2013 - 2014	0	0	0	0	3	0	3
2012 - 2013	1	0	2	1	0	0	4
Difference	-1	0	-2	-1	3	0	-1
Santa Monica Schools							
2013 - 2014	46	6	10	9	7	4	82
2012 - 2013	64	10	9	8	10	3	104
Difference	-18	-4	1	1	-3	1	-22

Interdistrict Permits Granted, Fall 2013

Malibu Elementary Schools

35

Juan Cabrillo	K	1st	2nd	3rd	4th	5th	Total
2013 - 2014	11	0	1	1	1	3	17
2012 - 2013	6	1	3	0	4	3	17
Difference	5	-1	-2	1	-3	0	0
Point Dume	K	1st	2nd	3rd	4th	5th	Total
2013 - 2014	1	0	0	1	1	1	4
2012 - 2013	1	1	0	1	0	0	3
Difference	-0	-1	0	0	1	1	1
Webster	TK/K	1st	2nd	3rd	4th	5th	Total
2013 - 2014	9	1	0	0	1	0	11
2012 - 2013	11	1	0	1	0	1	14
Difference	-2	0	0	-1	1	-1	-3
Malibu Schools							
2013 - 2014	21	1	1	2	3	4	32
2012 - 2013	18	3	3	2	4	4	34
Difference	3	-2	-2	0	-1	0	-2

Interdistrict Permits Granted, Fall 2013

"Choice" Schools

36

Edison	K	1st	2nd	3rd	4th	5th	Total
2013 - 2014	23	3	2	2	1	2	33
2012 - 2013	23	4	0	0	1	0	28
Difference	0	-1	2	2	0	2	5
SMASH	K	1st	2nd	3rd	4th	5th	Total
2013 - 2014	1	0	0	0	1	0	2
2012 - 2013	4	1	0	0	0	0	5
Difference	-3	-1	0	0	1	0	-3
"Choice" Schools							
2013 - 2014	24	3	2	2	2	2	35
2012 - 2013	27	5	0	0	1	0	33
Difference	-3	-2	2	2	1	2	2
Total Elementary Permits							
2013 - 2014	91	10	13	13	12	10	149
2012 - 2013	109	18	12	10	15	7	171
Difference	-18	-8	1	3	-3	3	-22

Interdistrict Permits Granted, Fall 2013

Middle Schools

37

Santa Monica Schools				
John Adams	6th	7th	8th	Total
2013 - 2014	16	5	2	23
2012 - 2013	8	4	1	13
Difference	8	1	1	10
Lincoln	6th	7th	8th	Total
2013 - 2014	2	3	3	8
2012 - 2013	2	7	4	13
Difference	0	-4	-1	-5
2013 - 2014	18	8	5	31
2012 - 2013	10	11	5	26
Difference	8	-3	0	5
Malibu Schools				
Malibu (MS)	6th	7th	8th	Total
2013 - 2014	3	1	2	6
2012 - 2013	4	2	4	10
Difference	-1	-1	-2	-4
Total Middle School Permits				
2013 - 2014	21	9	7	37
2012 - 2013	14	13	9	36
Difference	7	-4	-2	1

Interdistrict Permits Granted, Fall 2013

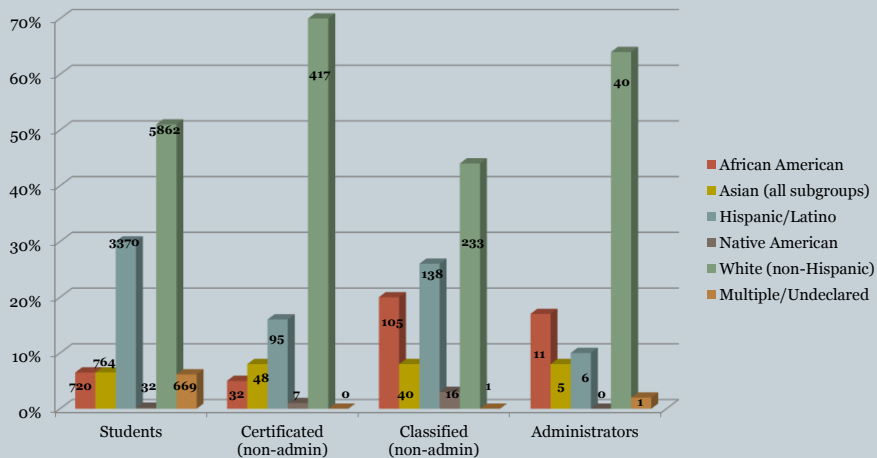
High Schools

38

Santa Monica High School	9th	10th	11th	12th	Total
2013 - 2014	18	7	1	5	31
2012 - 2013	21	15	5	6	47
Difference	-3	-8	-4	-1	-16
Malibu High School	9th	10th	11th	12th	Total
2013 - 2014	3	3	1	1	8
2012 - 2013	6	4	2	1	13
Difference	-3	-1	-1	0	-5
Total High School Permits					
2013 - 2014	21	10	2	6	39
2012 - 2013	27	19	7	7	60
Difference	-6	-9	-5	-1	-21
Summary					
SMMUSD Totals	Elem.	MS	HS		Total
2013 - 2014	149	37	38		225
2012 - 2013	171	36	60		267
Difference	58	10	7		-42

Students & Staff Demographics – 2012-13

39



Source: California Department of Education Data Quest

OVERALL SUMMARY

40

- Enrollment is down from last report by 106 – secondary focus
- Staffing remains constant due to program enhancement
- District was 99% staffed by June; a combined 5 FTE added after that date
- Historical ratios at primary and secondary were, in part, determined in light of a structural deficit; decisions may be revisited in light of future CSR guidelines
- Site and District staff actively consider contract language and Board directives in staffing calculations and Master Schedule building
- 225 students entered SMMUSD via interdistrict permit in Fall 2013
- Demographics are a work in progress

EQUITY AND ACCESS FOR STUDENT SUCCESS

October 2013
BOE Update

Education Trust

“The results of the 2013 STAR show that California students’ progress is stagnant and has even declined slightly in certain areas. In addition to” flat results, “stubborn gaps continue to separate economically disadvantaged, Latino, and African-American students from their more advantaged and/or white peers.”

EdSource

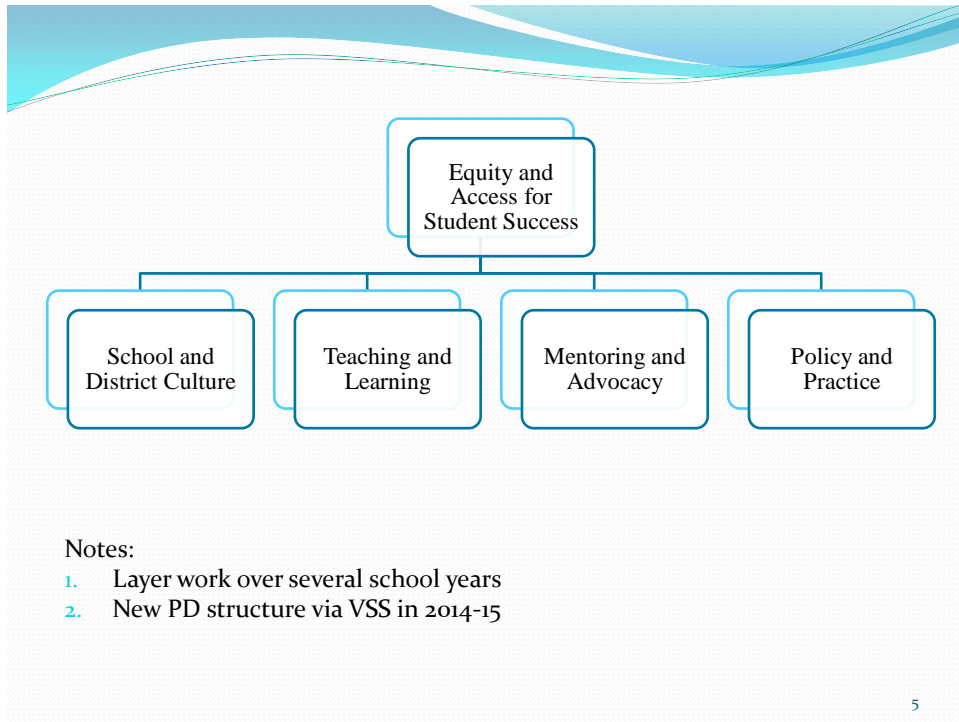
- NAEP and CST data show that poor students, African Americans and Latinos, and English learners are over-represented among students scoring at the lowest levels and under-represented among the highest scoring.
- Dropout, graduation, a-g, attendance and suspension rates reveal similar patterns.
- These results are important because they predict later success, including students' ability as adults to **secure jobs that pay a living wage.**

3

McKinsey & Company

- Our students who are not learning and succeeding *today* will most likely suffer from one or more of the following tragic consequences *as adults*:
 - Unemployment/Underemployment
 - Poor health and/or shorter life span
 - Higher rates of incarceration
 - Higher rates of substance abuse
 - Lower standard of living

4



2013-14 Areas of Focus #1: School and District Culture

Begin

- District/School CP/Climate Survey
- Equity and Access Ad Hoc Committee
- Professional Learning Communities*

Continue and Improve

- Cultural Proficiency & Anti-Racism* Training
- Bully-free Schools

2014-15/2015-16

- Family-Friendly Schools
- School, Family and School Partnerships

2013-14 Areas of Focus #2: Teaching and Learning

Begin

- Achievement Gap: 5 Year Plan to Monitor/Narrow Gaps
- Ethnic Studies
- Technology and 1-1 Computing
- Preschool and Out-of-School Programs

Continue and Improve

- Social and Emotional Learning
- Culturally Relevant Fiction/Nonfiction Reading
- Culturally-Responsive Instruction (Math Focus)

7

2013-14 Areas of Focus #2: Teaching and Learning

Continue and Expand

- RTI² and Pyramid of Interventions

2014-15/2015-16

- Professional Development
- Building Background Knowledge
- Access and Success in Advanced Placement Courses
- Instructional Strategies for Targeted Subgroups

8

2013-14 Areas of Focus #3: Mentoring and Advocacy

Begin

- College Readiness and Ten Year Plans*

Continue Existing

- Mentoring Programs

Continue and Expand

- African American College Empowerment

Continue and Improve

- AVID
- Young Collegians

**New component*

9

2013-14 Areas of Focus #4: Policy and Practice

Begin

- Focus
- Attendance and Discipline*
- Assessment and Monitoring

Continue and Improve

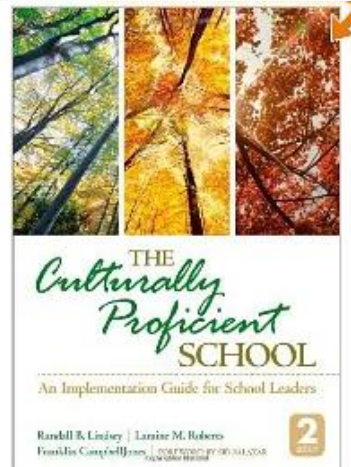
- School Policy and Practice
- Advisory Committees and Community Partnerships
- 2014-15/2015-16

**New component*

10

School and District Culture: Cultural Proficiency and Anti-Racism

- Formal/Informal training
- Think-Aloud's
- Modeling
- Principals' Meeting 11/12



11

School and District Culture: Survey on Cultural Proficiency

- Annual
- K12 Insight
- Climate and Safety survey
- Teachers, staff, students parents
- Launch: January
- Results: February
- DACs
- Topics
 - Academic preparation
 - Student support
 - School leadership
 - Parent involvement
 - Safety and behavior
 - School operations
 - Customize to include bullying, connectedness and racism

12

School and District Culture

- Professional Learning Communities
 - What do we want students to learn?
 - How will we know if students learned?
 - How will we respond when students don't learn?
 - How will we respond when students have already learned?
- All Schools are sending principal-lead teams
- Two Cohorts
- 4+2 or 2+4 full days of training

13

School and District Culture: Bully-Free Schools



Principals' Meetings

- Jay Fernow
- PreK-5 Anti-Bullying Curriculum
 - Tight: Common District Curriculum
 - Loose: School Add-on's

14

School and District Culture: District Equity and Access Ad Hoc

- Meeting Dates
 - Yesterday
 - December, February, April, June
- Membership
- Purpose: Communication related to E & A plan
- Partners: Community Meetings
 - Achievement/Opportunity Gaps
 - Homework
 - CCSS (and other district initiatives)
 - College and Career Readiness
 - Information Access

15

Teaching and Learning

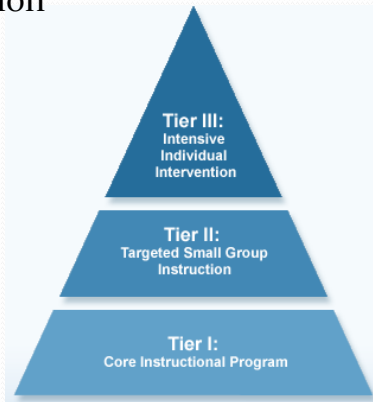
- Achievement Gap: Five Year Plan to Monitor and Narrow Gaps
 - Attendance, Discipline, Academics
 - College and Career Readiness
 - EDI
- Look ahead 5 years and benchmark backwards



16

Teaching and Learning

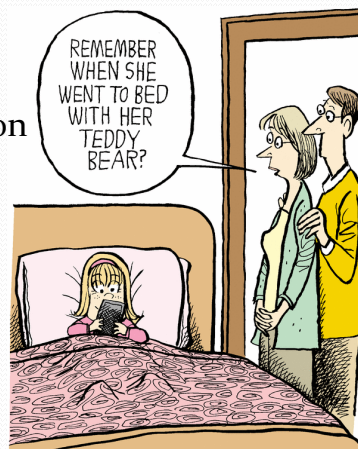
- RTI² and Pyramid of Intervention
 - PLCs
 - Elementary Literacy Coach
- Social & Emotional Learning
 - Grit
 - CCSS and Math Practices
 - Researching “how to...”
- Ethnic Studies
 - Enrollment: 27
 - Class Visits



17

Teaching and Learning

- Culturally-Relevant Fiction/Nonfiction Reading
- Culturally-Responsive Instruction
 - Math Focus
 - Informally
- Technology and 1-1 Computing
 - DTT
 - Membership is diverse
 - Equity and Access and 1-1 Computing Subcommittees



18

Teaching and Learning

- Preschool
 - Vision: Neighborhood PreK-5 elementary schools
 - Challenges
 - Is it fiscally feasible?
 - EDI for all K's
 - Identifying and treating trauma
 - Pre-K: K Collaboration
- Afterschool Programs



19

Mentoring and Advocacy

- School survey of services
- AVID and Young Collegian
 - Program Evaluation
 - Improvement/Scaling Up Plans
- College Readiness & Ten Year Plans
 - Response to “No math in 12th grade”
 - Senior Math Elective
 - Place Test Prep
 - Everyone takes math...
 - SMC Partnership
 - 4-Year Plans → 10-Year Plans



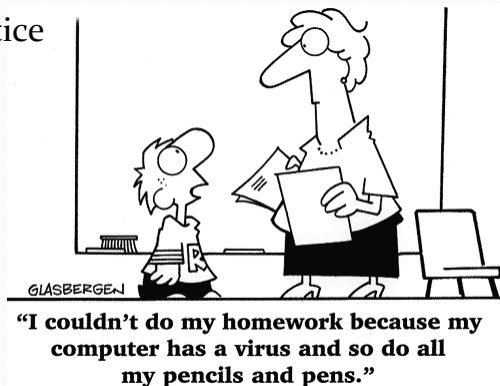
Policy and Practice

- School Policy and Practice
 - Data and the Hard Conversations
 - Who has access to resources? Who does not?
 - Are we leaving important, life-impacting decisions to students?
 - The middle-class, educated, English only, white mindset
 - Attendance and Discipline
 - Data, Communication, A2A and Goal-setting
 - Suspension rates and alternate means of correction

21

Policy and Practice

- Focus! We're doing it!
- School Policy and Practice
 - Student fees
 - Student supplies
 - Homework
 - Teachers
 - Parents
 - Administrators
 - Counselors/Advisors
 - Students
 - Community Partners



22

Questions

23