

**For a Listing of Upcoming Board Meetings See Page vi of this Table of Contents**  
**Santa Monica-Malibu Unified School District**  
**Board of Education Meeting**  
**AGENDA**

**December 15, 2011**

A regular meeting of the Santa Monica-Malibu Unified School District Board of Education will be held on **Thursday, December 15, 2011**, in the **District Administrative Offices**: 1651 16<sup>th</sup> Street, Santa Monica, CA. The Board of Education will call the meeting to order at 4:30 p.m. in the Board Conference Room at the District Offices, at which time the Board of Education will move to Closed Session regarding the items listed below. The public meeting will reconvene at 6:00 p.m. in the Board Room.

**The public meeting will begin at 6:00 p.m.**

Persons wishing to address the Board of Education regarding an item that is scheduled for this meeting must submit the "Request to Address" card prior to discussion of that item. Persons wishing to address the Board of Education regarding an item that is not scheduled on this meeting's agenda may speak during the Public Comments section by submitting the Request to Address card at the beginning of the meeting. The same card is used for either option and is printed in both Spanish and English. Cards are located with meeting materials just outside the meeting room. Completed cards should be submitted to the Recording Secretary.

**Time Certain Items:** Those items listed for a specified time (marked in the margin) are so noted to give the public an indication of when the Board will hear that item. However, if it is prudent to do so, the Board may adjust the time stamp to complete an item currently on the floor, but will not delay the time stamped item for more than 15 minutes.

**I. CALL TO ORDER**

- A. Roll Call
- B. Pledge of Allegiance

**II. PUBLIC COMMENTS FOR CLOSED SESSION ITEMS ONLY**

**III. CLOSED SESSION (90)**

- Receipt of recommendation for approval of the proposed CAHSEE waiver request pursuant to §60851 (c), as cited in the Education Code (30):
  - CAHSEE-1001-11/12      CAHSEE-1005-11/12      CAHSEE-1009-11/12
  - CAHSEE-1002-11/12      CAHSEE-1006-11/12      CAHSEE-1010-11/12
  - CAHSEE-1003-11/12      CAHSEE-1007-11/12
  - CAHSEE-1004-11/12      CAHSEE-1008-11/12
- Conference with Superintendent regarding 2011-12 Strategies for Negotiations with S.M.M.C.T.A. pursuant to GC §54957.6 as cited in the Brown Act. (20)
- Conference with Superintendent regarding 2011-12 Strategies for Negotiations with S.E.I.U. pursuant to GC §54957.6 as cited in the Brown Act. (20)
- Closed Session, Superintendent's performance evaluation pursuant to GC §54957, as cited in the Brown Act. (20)

**IV. BOARD OF EDUCATION – COMMENDATIONS / RECOGNITIONS (20)**

- Outgoing Personnel Commissioner – Pam Brady
- Outgoing Board President – Jose Escarce
- Outgoing Board Vice President – Ben Allen

**V. APPROVAL OF THE AGENDA**

If you will require accommodation to participate in the Board meeting, please notify the Superintendent's Office at least one day prior to the meeting.

**VI. APPROVAL OF MINUTES**

November 17, 2011

November 29, 2011

**VII. CONSENT CALENDAR (30)**

As agreed by the President, Vice President, and Superintendent during agenda planning, consent agenda items are considered routine, require no discussion, and are normally approved all at once by the Board of Education. However, members of the Board of Education, staff, or the public may request an item be moved from the consent agenda to Section XI (Major Items) for clarification and/or discussion.

**Curriculum and Instruction**

A.02	Approval of Independent Contractors.....	2-3
A.03	Conference and Travel Approval Ratification.....	4-6
A.04	Overnight Field Trip(s) 2011-2012.....	7-8
A.05	Self Assessment Training for State Preschool / Head Start.....	9
A.06	Approval of Special Education Contracts – 2011-2012.....	10-12

**Business and Fiscal**

A.07	Award of Purchase Orders – 2011-2012.....	13-13g
A.08	Acceptance of Gifts – 2011-12.....	14-18
A.09	Approval for Disposal/Recycle of Surplus Equipment.....	19-20
A.10	Award of Bid #12.05 Regenerative Poole Filter to Neptune Benson – Malibu Middle/High School.....	21

**Measure BB**

A.11	Contract Amendment #23 for Additional Testing and Special Inspection Services – John Adams Middle School New Construction and Modernization Project – Leighton Consulting, Inc. – Measure BB.....	22-23
A.12	Amendment to Contract for Bid #10.33.BB-03-113031 – Lincoln Middle School – Modernization of Building E (Package 1B) Project – Measure BB.....	24-25
A.13	Approval of Measure BB Construction Budget Increase – Olympic High School – Measure BB.....	26
A.14	Contract Amendment #39 for Site Survey Services – New Edison Language Academy Project – Psomas – Measure BB.....	27-28
A.15	Approval of Developer-Contractor – Santa Monica High School – Science & Technology Building and Site Improvements Project – Lease Leaseback RFP – Measure BB.....	29
A.16	Award of Contract for Testing and Special Inspection Services – Santa Monica High School – Science & Technology Building and Site Improvements Project – Measure BB.....	30
A.17	Award of Contract for Inspection Services for Santa Monica High School – Science & Technology Building and Site Improvement Project – Measure BB.....	31
A.18	Contract Amendment #2 for Testing and Special Inspection Services during Construction – Santa Monica High School – Civic Center Joint Use Project (CCJUP) Replacement of Existing Grass Football Field with Synthetic Turf Project – Leighton Consulting, Inc. – Measure BB.....	32
A.19	Contract Amendment #30 for Additional Architectural Services for Malibu High School, Campus Improvement Project – HMC Architects – Measure BB.....	33-34

If you will require accommodation to participate in the Board meeting, please notify the Superintendent’s Office at **jj** least one day prior to the meeting.

A.20	Acceptance of Work Completed for Bid #10.35.BB-03-112541 – Point Dume Elementary School – Gas & Furnace Replacement Project – Bon Air Inc. – Measure BB .....	35
A.21	Acceptance of Work Complete for Bid #10.-42-BB – Malibu High School – Soil Remediation Project – Innovative Construction Solutions – Measure BB .....	36

**Personnel**

A.22	Certificated Personnel – Elections, Separations .....	37-43
A.23	Classified Personnel – Merit.....	44-49
A.24	Classified Personnel – Non-Merit.....	50
A.25	Student Teaching Agreement – California State University, Dominguez Hills.....	51

**General**

A.26	Permit to Use Civic Auditorium Facilities.....	52
A.27	Extension of Financial Oversight Committee (FOC) Terms .....	53

**VIII. PUBLIC COMMENTS**

Public Comments is the time when members of the audience may address the Board of Education on items not scheduled on the meeting's agenda. All speakers are limited to three (3) minutes. When there is a large number of speakers, the Board may reduce the allotted time to two (2) minutes per speaker. The Brown Act (Government Code) states that Board members may not engage in discussion of issues raised during "VIII. Public Comments" except to ask clarifying questions, make a brief announcement, make a brief report on his or her own activities, or to refer the matter to staff. This Public Comment section is limited to twenty (20) minutes. If the number of persons wishing to address the Board of Education exceeds the time limit, additional time will be provided in **Section XVI. CONTINUATION OF PUBLIC COMMENTS.**

**IX. COMMUNICATIONS (30)**

The Communications section provides an opportunity for the Board of Education to hear reports from the individuals or committee representatives listed below. All reports are limited to 5 minutes or less. However, if more time is necessary, or if a report will not be presented, please notify the Board secretary eight workdays prior to the date of the meeting.

**A. Student Board Member Reports (15)**

- Caroline Huber – Santa Monica High School
- Yasi Afsharnive – Malibu High School
- Chynna Summers – Olympic High School

**B. SMMCTA Update – Mr. Harry Keiley (5)**

**C. S.E.I.U. Update – Ms. Keryl Cartee-McNeely (5)**

**D. PTA Council – Kelly McMahon Pye (5)**

- Dan McGee – SMASH PTSA President

**X. SUPERINTENDENT'S REPORT (5)**

**MAJOR and DISCUSSION Items**

*As a general rule, items under MAJOR and DISCUSSION will be listed in an order determined by the President, Vice President, and Superintendent. Individual Board members may move to request a change in the order prior to consideration of any Major item. The Board may also move any of these items out of order to be heard immediately following PUBLIC COMMENTS if it appears that there is special interest by the public or as a courtesy to staff members making presentations to the Board.*

**XI. MAJOR ITEMS (90)**

These items are considered to be of major interest and/or importance and are presented for **ACTION (A)** or **INFORMATION (I)** at this time. Many have been reviewed by the Board at a previous meeting under Section XII (Discussion Items) of the agenda.

A.28	Election of Board of Education Officers (10) .....	54
A.29	Certification of Authorized Signatures (5).....	55-55b
A.30	Election of Annual Representative to the Los Angeles County School Trustees Association (LACSTA) for 2011-2012 (5).....	56
A.31	Election of Voting Representative: Los Angeles County Committee on School District Organization (5).....	57
A.32	Increase in Staffing (FTE) – John Muir Elementary School (5).....	58
A.33	Increase in Staffing (FTE) – Student Services (5).....	59
A.34	Increase in Staffing (FTE) – Special Education / Juan Cabrillo Elementary School (5).....	60
A.35	Increase in Staffing (FTE) – Special Education (5).....	61
A.36	Approval of 2010-11 First Interim Report (45).....	62-74

**XII. DISCUSSION ITEMS (75)**

These items are submitted for information (FIRST READING) and discussion. Action will generally be considered at the next regularly scheduled meeting of the Board.

D.01	Update on the Advanced Placement Program (60).....	75
D.02	Budget Update (15) .....	76

**XIII. INFORMATIONAL ITEMS (0)**

**XIV. BOARD MEMBER ITEMS (0)**

These items are submitted by individual board members for information or discussion, as per Board Policy 9322.

**XV. REQUESTS BY MEMBERS OF THE PUBLIC OR DISTRICT ADVISORY COMMITTEES TO ADDRESS THE BOARD OF EDUCATION**

A board member or member of the public may request that a matter within the jurisdiction of the board be placed on the agenda of a regular meeting, as per Board Policy 9322. The request shall be in writing and be submitted to the superintendent or designee with supporting documents and information, if any, at least one week before the scheduled meeting date. Items submitted less than a week before the scheduled meeting date may be postponed to a later meeting in order to allow sufficient time for consideration and research of the issue. The board president and superintendent shall decide whether a request is within the subject matter jurisdiction of the board. Items not within the subject matter jurisdiction of the board may not be placed on the agenda. In addition, the board president and superintendent shall determine if the item is merely a request for information or whether the issue is covered by an existing policy or administrative regulation before placing the item on the agenda.

**XVI. CONTINUATION OF PUBLIC COMMENTS**

A continuation of Section VIII, as needed. (If the number of persons wishing to address the Board of Education exceeds the time limit in section VIII, additional time will be provided in Section XVI, CONTINUATION OF PUBLIC COMMENTS.)

**XVII. BOARD MEMBER COMMENTS**

Board Member Comments is the section where a Board member may make a brief announcement or report on his/her own activities relative to Board business. There can be no discussion under "BOARD MEMBER COMMENTS."

**XVIII. FUTURE AGENDA ITEMS**

Items for future consideration will be listed with the projected date of consideration. The Board of Education will be given any backup information available at this time.

**XIV. CLOSED SESSION**

The Board of Education will, if appropriate, adjourn to Closed Session to complete discussion on items listed under Section III (Closed Session) following the regular business meeting.

**XX. ADJOURNMENT**

This meeting will adjourn to the next regular meeting, which is scheduled for **Thursday, January 19, 2012**, at the **district office**: 1651 16<sup>th</sup> Street, Santa Monica, CA.

**Meetings held at the District Office and in Malibu are taped and rebroadcast in Santa Monica on CityTV2, Cable Channel 20 – Check TV listing.**

**Meetings are rebroadcast in Malibu on Government Access Ch. 3 every Saturday at 8pm.**

If you will require accommodation to participate in the Board meeting, please notify the Superintendent's Office at v least one day prior to the meeting.

Board of Education Meeting AGENDA: December 15, 2011

**SMMUSD Board of Education Meeting Schedule 2011-2012**

**Closed Session begins at 4:30pm**  
**Public Meetings begin at 6:00pm**

July through December 2011					
Month	1 <sup>st</sup> Thursday	2 <sup>nd</sup> Thursday	3 <sup>rd</sup> Thursday	4 <sup>th</sup> Thursday	Special Note:
July			7/20* DO	7/23* DO 7/26* DO	*Wednesday, 7/20 *Saturday, 7/23: retreat *Wednesday, 7/26: special mtg
August		8/10* DO		8/24* DO	*Wednesday, 8/10 *Wednesday, 8/24 First day of school: 8/30
September	9/8 DO			9/22 DO	
October	10/6 M		10/20 DO	10/22* DO	*Saturday, 10/22: retreat
November	11/3 M		11/17 DO	11/29* DO	Thanksgiving: 11/24-25 *Tuesday, 11/29: special mtg
December			12/15 DO	winter break	
<b>Winter Break: December 21 – January 3</b>					
January through June 2012					
<b>Winter Break: December 21 – January 3</b>					
January			1/19 DO		
February	2/2 M		2/16 DO		
March	3/1 DO		3/15 DO	<del>3/29* DO</del>	*3/22 & 3/23: Stairway *3/29: 5 <sup>th</sup> Thursday
<b>Spring Break: April 2 – April 13</b>					
April	spring break	spring break	4/19 DO		
May	5/3 M		5/17 DO		
June	6/7 DO			6/27* DO	Last day of school: 6/15 *Wednesday: 6/27

District Office (DO): 1651 16<sup>th</sup> Street, Santa Monica.  
 Malibu City Council Chambers (M): 23815 Stuart Ranch Road, Malibu, CA

If you will require accommodation to participate in the Board meeting, please notify the Superintendent's Office at [vi@smusd.net](mailto:vi@smusd.net) at least one day prior to the meeting.  
 Board of Education Meeting AGENDA: December 15, 2011

**Santa Monica-Malibu Unified School District  
Board of Education  
December 15, 2011**

**I. CALL TO ORDER**

A. Roll Call

Jose Escarce – President  
Ben Allen – Vice President  
Oscar de la Torre  
Maria Leon-Vazquez  
Laurie Lieberman  
Ralph Mechur  
Nimish Patel

Student Board Members

B. Pledge of Allegiance

**II. CLOSED SESSION**

TO: BOARD OF EDUCATION  
FROM: SANDRA LYON  
RE: APPROVAL OF MINUTES

ACTION  
12/15/11

RECOMMENDATION NO. A.01

It is recommended that the Board of Education approve the following Minutes:

November 17, 2011  
November 29, 2011

MOTION MADE BY:  
SECONDED BY:  
STUDENT ADVISORY VOTE:  
AYES:  
NOES:



---

## **CONSENT ITEMS**



TO: BOARD OF EDUCATION

ACTION/CONSENT

12/15/11

FROM: SANDRA LYON / CHIUNG-SALLY CHOU / JANECE L. MAEZ / PEGGY HARRIS  
/ STUART SAM

RE: APPROVAL OF INDEPENDENT CONTRACTORS

RECOMMENDATION NO. A.02

It is recommended that the Board of Education enter into an agreement with the following Independent Contractors. These contracts are included in the 2011-2012 budget.

<b>Contractor/ Contract Dates</b>	<b>Description</b>	<b>Site</b>	<b>Funding (Measure BB)</b>
Orbach, Huff and Suarez California, LLC  Amend Contract Amount to: \$120,000 <i>(\$40,000 approved on 7/20/11)</i>	Anticipated legal fees for Civic Center Joint Use Project(CCJUP)	CCJUP	40-90602-0-00000-85000- 5820-015-2600 (\$80,000)
Wallace Architecture  12/1/11 to 7/31/12  Not to exceed: \$30,000	Change Order Review Services	Measure BB/ Capital Improve- ments	21/81/82-90500-0-00000- 85000-5802-XXX-2600

<b>Contractor/ Contract Dates</b>	<b>Description</b>	<b>Site</b>	<b>Funding</b>
MaryAnne Solomon  7/1/11 to 6/30/12  Not to exceed: \$4,800	Maintain updates to SAMOHI website directory	SAMOHI	01-90150-0-11100-10000- 5802-015-4150 (Reimb. by PTSA)
Jennifer Bloom Santa Monica Repertory Theater  12/1/11 to 6/30/12  Not to exceed: \$2,650	To partner and pilot a multi- disciplinary experimental arts integration program in collaboration with a SMMUSD 5 <sup>th</sup> grade teacher at Grant and Franklin.	Educa- tional Services	01-40350-0-11100-21000- 5802-035-1300 (Title II)
Ana Maria Alvarez Contra-Tiempo  9/1/11 to 6/30/12  Not to exceed: \$10,000	To provide Salsa/Rueda (Cuban form of Salsa) to 4 <sup>th</sup> grade students at 4 Title I schools. Culminates with stage performance with professional dancers in Spring.	Educa- tional Services	01-91251-0-17000-10000- 5802-030-1300 (LA County Arts Commission)
Dana Murphy  12/1/11 to 4/30/12  Not to exceed: \$10,000	To provide after-school Theatre program to interested students at John Adams Middle School with culminating event.	Educa- tional Services	01-90830-0-17000-10000- 5802-030-1300 (SMMEF – Dream Winds)

Chad Scheppner 1/4/12 to 6/30/12 Not to exceed: \$12,500	To provide after-school Theatre program to interested students at Lincoln Middle School with culminating event.	Educational Services	01-90830-0-17000-10000-5802-030-1300 (SMMEF – Dream Winds)
Dorothy Sullivan 1/3/12 to 5/31/13 Not to exceed: \$2,460	To provide speech and language therapy for selected Title I students.	St. Anne's Catholic School	01-30100-0-11100-10000-5802-036-1300 (Title I)

MOTION MADE BY:  
SECONDED BY:  
STUDENT ADVISORY VOTE:  
AYES:  
NOES:

TO: BOARD OF EDUCATION

ACTION/CONSENT

12/15/11

FROM: SANDRA LYON / JANECE L. MAEZ / PAT HO

RE: CONFERENCE AND TRAVEL APPROVAL/RATIFICATION

RECOMMENDATION NO. A.03

It is recommended that the Board of Education approve/ratify the following Requests for Absence on District Business (Conference and Travel) forms.

COMMENTS: Entries are alphabetical, by employee last name. In addition to the employee's name and site/location, each entry contains the following information: name, location and date (s) of the conference, complete account code, fund and program names, and the total estimated cost as provided by the site administrator. The average cost for substitute teachers is \$130/day. This figure is furnished for informational purposes and does not reflect the actual amount paid for an individual substitute.)

<u>AME</u> <u>SITE</u> Account Number Fund – Resource Number	<u>CONFERENCE NAME</u> <u>LOCATION</u> <u>DATE (S)</u>	<u>COST</u> <u>ESTIMATE</u>
<u>BARNETT, Joy</u> Malibu High 01-00010-0-11100-10000-5220-010-4100 General Fund- Resource: Tier III	The Out of Sync Child-Sensory Processing Disorders Long Beach, CA December 9, 2011	\$230 <b>+1 SUB</b>
<u>CHI, AhYoung</u> Malibu High 01-00010-0-11100-10000-5220-010-4100 General Fund- Resource: Tier III	CSAC High School Counselor Workshop Los Angeles, CA November 8, 2011	\$0
<u>CRUZ, Gerardo</u> Child Development Services	Various LACOE Workshops (11/29/11, 11/30/11, 1/10/12, 1/19/12, 2/09/12, 2/15/12 and 2/22/12)	\$0
<u>DE LA TORRE, Oscar</u> District Office 01-00000-0-00000-71500-5220-020-1200 General Fund- Function: Superintendent	Unity Conference 2011- Education Is Our Freedom San Diego, CA October 7 – 8, 2011	\$515
<u>DIAZ, Aida</u> Ed Services 01-42030-0-47600-10000-5220-035-1300 General Fund- Resource: Title III	12th Annual Accountability Leadership Institute for English Learners San Diego, CA December 4 – 6, 2011	\$800
<u>HAGEN, Marcia</u> Human Resources 01-00000-0-00000-74000-5220-025-1250 General Fund- Function: Personnel/Human Resources	CWIP Webinar Downey, CA December 12, 2011	\$30
<u>HERRERA, Mayra</u> Rogers Elementary 01-30100-0-11100-10000-5220-006-4060 General Fund- Resource: Title I	Growing Educators Los Angeles, CA January 3 – 5, 2012	\$195 <b>+1 SUB</b> <b>1 DAY</b>
<u>LOPEZ, Ricardo</u> Fiscal Services 01-00000-0-00000-73100-5220-051-2510 General Fund- Function: Fiscal Services	2011 W-2 HRS User Meeting Downey, CA November 14, 2011	\$29

<u>LYON, Sandra</u> District Office 01-00000-0-00000-71500-5220-020-1200 General Fund- Function: Superintendent	2012 Superintendent's Symposium Moterey, CA January 24 – 27, 2012	\$1,500
<u>MEJIA, Rosa</u> Santa Monica High 01-40350-0-11100-21000-5220-035-1300 General Fund- Resource: Title II	A Dream Deferred: Future of African American Education Los Angeles, CA April 26 – 27, 2011	\$375
<u>TASLIMI, Laila</u> McKinley Elementary 01-91700-0-11000-10000-5220-004-4040 General Fund- Resource: Cotsen Family Foundation	UCLA Training Los Angeles, CA June 28 – 30, 2011	\$405
<u>WADSWORTH, Henry</u> Malibu High 01-00010-0-11100-10000-4310-010-4100 General Fund- Resource: Tier III	California Math Conference Palm Springs, CA November 4 – 5, 2011	\$330 <b>+1 SUB</b>

<b>Adjustments</b> (Preapproved expenses 10% in excess of approved costs that must be approved by Board/Changes in Personnel Attendance)		
<b>NONE</b>		

<b>Group Conference and Travel: In-State</b> * a complete list of conference participants is on file in the Department of Fiscal Services		
<u>BRADFORD, Maureen</u> <u>DIAZ, Aida</u> Ed Services 01-42030-0-47600-10000-5220-035-1300 General Fund- Resource: Title III	Technical Assistance for Title III Downey, CA 10/14/11, 10/25/11, 11/8/11, 11/14/11, 11/15/11, 12/02/11 and 12/09/11	\$340
<u>MEJIA, Rosa</u> <u>GATELL, Frank</u> Santa Monica High	UCLA Training Los Angeles, CA November 18, 2011	\$0
<u>STRAUSS, Susan</u> <u>+3 Additional Staff</u> Adams Middle 01-70900-0-11100-10000-5220-011-4110 General Fund- Resource: Economic Impact Aid	Ideas Unlimited Seminars, Inc. Changing Student Behaviors Monrovia, CA December 2, 2011	\$800 <b>+4 SUBS</b>
<u>WETHERN, Heather</u> <u>FORRER, Brooke</u> Santa Monica High 01-00000-0-11100-27000-5220-015-4150 General Fund- Function: School Administration	LA Starts Eagle Rock, CA 12/10/11, 1/21/12, 2/11/12, 3/24/12 and 4/21/12	\$1,390

<b>Out-of-State Conferences: Individual</b>		
<u>TASLIMI, Laila</u> McKinley Elementary 01-91700-0-11100-10000-5220-004-4040 General Fund- Resource: Cotsen Family Foundation	Teachers College Reading Workshop New York, NY August 8 – 12, 2011	\$675
<u>WOO, Angela</u> Adams Middle 01-90120-0-17100-10000-5220-011-4110 General Fund- Resource: Gifts	The Midwest Clinic Chicago, IL December 13 – 16, 2011	\$110 <b>+1 SUB</b>

<b>Out-of-State Conferences: Group</b>		
<b>NONE</b>		

MOTION MADE BY:  
 SECONDED BY:  
 STUDENT ADVISORY VOTE:  
 AYES:  
 NOES:





TO: BOARD OF EDUCATION

ACTION/CONSENT

12/15/11

FROM: SANDRA LYON / CHIUNG-SALLY CHOU / MAUREEN BRADFORD

RE: OVERNIGHT FIELD TRIP(S) 2011-2012

RECOMMENDATION NO. A.04

It is recommended that the Board of Education approve the special field trip(s) listed below for students for the 2011-2012 school year. No child will be denied due to financial hardship.

School Grade # students	Destination Dates of Trip	Principal/Teacher	Cost Funding Source	Subject	Purpose Of Field Trip
Malibu Middle and High School 6 <sup>th</sup> – 12 <sup>th</sup> 100	Music in the Parks Choral Festival, Disneyland, CA 5/4/12-5/5/12	M. Kelly/ A. Loch	\$150 per student paid by parents	Music	Students will participate in the Parks Choral Festival.
Malibu High School 9 <sup>th</sup> – 12 <sup>th</sup> 20	Heritage Music Festival, Sea World, San Diego 3/15/12-3/18/12	M. Kelly/ A. Loch	\$300 per student paid by parents	Music	Girls selected choir will participate in the Heritage Choral Music Festival.
Malibu High School 9 <sup>th</sup> – 12 <sup>th</sup> 30	Lost Hills Sheriff Station, Pierce Bros., Camp Hess Kramer 3/1/12-3/2/12	P. Wenker/ Dohn/ Sferra		Retreat	Every Fifteen Minutes overnight trip to Camp Hess Kramer – student retreat.
Edison 5 <sup>th</sup> 71	Catalina Island Marine Institute, Catalina Island, CA 3/7/12-3/9/12	L. Orum/ Murcia/ Morales/ Naranjo	\$250 per student paid by parents	Science	5 <sup>th</sup> grade class will participate in Marine Science and Social studies instruction at the Catalina Island marine Institute.
Malibu Middle School 6 <sup>th</sup> 140	Wolf Camp, Malibu, CA 3/5/12-3/8/12	W. Wax/ D. Tucker, K Quin-Meyer	\$340 per student paid by parents		Annual 6 <sup>th</sup> grade overnight field trip to help reinforce team building skills as well as self esteem.
Webster 4 <sup>th</sup> 68	Astrocamp, Idylwild, CA 5/2/12-5/4/12	P. Cott/ L. Rose, T. Rubin	\$230 per student paid by parents	Science	An annual field trip offered to 4 <sup>th</sup> graders. Students will have an opportunity to participate in a series of hands-on, discovery oriented science seminars like geology, rocketry, and astronomy.

Webster 5 <sup>th</sup> 53	Yosemite Institute, Yosemite National Park 6/4/12-6/8/12	P. Cott/ K. London/ K. Verham	\$550 per student paid by parents and fundraising	Science and Social Studies	An annual field trip offered to 5 <sup>th</sup> graders. Students will have hands-on experience related to the science and social studies.
Webster 4 <sup>th</sup> and 5 <sup>th</sup> 63	Sea World, San Diego, CA 1/18/12-1/19/12	P. Cott/ K. London/ K. Verham	\$150 per student paid by parents	Science	Educational field trip related to marine life.
Samohi 9 <sup>th</sup> – 12 <sup>th</sup> 15	Crown Plaza Anaheim Resort, CA 1/27/12-1/29/12	L. Fretz/ M. Shafiey/ L. Wells	\$150 per student paid by parents and fundraising	ROP	ACA DECA student will be competing at the Southern California DECA Competition.
Samohi 9 <sup>th</sup> – 12 <sup>th</sup> 89	Millenium Stage at Kennedy center in Washington DC 4/9/12-4/14/12	L. Fretz/ J. Swenson/ J. Aiello	\$1,500 per student paid by parents and fundraising	Music	The Symphony will perform at the Millenium Stage at Kennedy Center and will have the opportunity to attend concerts, and work with members of the Baltimore Symphony.

MOTION MADE BY:  
SECONDED BY:  
STUDENT ADVISORY VOTE:  
AYES:  
NOES:

TO: BOARD OF EDUCATION

ACTION/CONSENT

12/15/11

FROM: SANDRA LYON / CHIUNG-SALLY CHOU / JUDY ABDO

RE: SELF ASSESSMENT TRAINING FOR STATE PRESCHOOL / HEAD START

RECOMMENDATION NO. A.05

It is recommended that the Board of Education approve the Training for Self Assessment for State Preschool/Head Start for the week of January 9 -13, 2012.

COMMENTS: Below is the self assessment schedule for the week of January 9-13, 2012.

<b>Monday</b>	<b>Tuesday</b>	<b>Wednesday</b>	<b>Thursday</b>	<b>Friday</b>
ECE 9am: Interview  Interview Teacher: McKinley  Fiscal Review	Health/Nutrition 9am: Interview  Fiscal Review	Mental Health and Disabilities 9am: Interview	Board Member Interview and Parent Group Interview (Time to be arranged)	Write Up of the Final Report
Safe Environments Parents	Safe Environments Parents	Safe Environments Parents	Safe Environments Parents	
9am: FCP Interview	9am: ERSEA Interview	9am: Program Design and Management Interview	pm: Transportation review	
pm: Document Review/Staff Interviews	pm: Document Review/Staff Interviews	pm: Document Review/Staff Interviews	pm: Document Review/Staff Interviews	pm: Document Review/Staff Interviews
Finalize Notes	Finalize Notes	Final Notes	Review Team Debriefing	

Training for self assessment team: Thursday, January 5, 2012

Review Team: Parents, Preschool Staff, District Advisory Committee

MOTION MADE BY:

SECONDED BY:

STUDENT ADVISORY VOTE:

AYES:

NOES:



TO: BOARD OF EDUCATION

ACTION/CONSENT

12/15/11

FROM: SANDY LYON / CHIUNG-SALLY CHOU / SARA WOOLVERTON

RE: APPROVAL OF SPECIAL EDUCATION CONTRACTS – 2011-2012

RECOMMENDATION NO. A.06

It is recommended that the Board of Education approve the following Special Education Contracts for fiscal year 2011-2012 as follows:

**NPS**

2011-2012 Budget 01-65000-0-57500-11800-5125-043-1400

Nonpublic School/Agency	SSID	Service Description	Contract Number	Cost Not to Exceed
Westview School	2049607045	NPS	#16-SPED12063	**Increase: \$1,262** (Total: <b>\$32,461</b> )
The HELP Group	8103149278	NPS	#71-SPED12119	\$49,650
The HELP Group	9103162601	NPS	#75-SPED12123	\$8,586
Bridgeport	05/08/1991	NPS	#72-SPED12120	\$21,655
Parkhill School	4/01/1998	NPS	#73-SPED12121	\$21,840
Logan River	8103132988	NPS	#74-SPED12122	\$5,826
The HELP Group	7145847516	NPS	#77-SPED12125	\$44,648
The HELP Group	5103150682	NPS	#78-SPED12126	\$50,668
The HELP Group	06/26/1995	NPS	#79-SPED12127	\$43,848
Vista Del Mar	3103137527	NPS	#80-SPED12128	\$25,165
Vista Del Mar	4139851140	NPS	#82-SPED12130	\$3,415
The HELP Group	8103132988	NPS	#83-SPED12131	\$28,756
Heritage Schools, Inc	4103134830	Residential	#85-SPED12136	\$13,650

Amount Budgeted NPS 11/12		\$ 1,700,000
Prior Board Authorization as of 11/17/2011		\$ 1,769,229
	Balance	\$ -69,229
Positive Adjustment (See Below)		\$ 25,644
		\$ -43,585
Total Amount for these Contracts		\$ 318,969
	Balance	\$ -362,554

Adjustment					
NPS Budget 01-65000-0-57500-11800-5125-043-1400					
NPS	Service Description	Contract Number	Reduce (R) Eliminate (E)	Adjusted Amount	Comment
Vista school	NPS	#63-SPED12105	Reduce	\$25,644	Change in Placement

**NPA**

2011-2012 Budget 01-65000-0-57500-11800-5126-043-1400

Nonpublic School/Agency	SSID	Service Description	Contract Number	Cost Not to Exceed
Dynamic Therapy Solutions	6168093794	AAC Consult	#76-SPED12124	\$1,440
Behavioral Building Blocks, Inc.	5103156082	Behavior Intervention	#81-SPED12129	\$44,100
Dynamic Therapy Solutions	4156409070	AAC Therapy	#84-SPED12132	\$10,400
Premiere Health Services, Inc	06/21/2008	Nurse Assistant	#86-SPED12137	\$12,000
Autism Spectrum Therapies	5103152572	Behavior Intervention / therapy	#87-SPED12131	\$58,950

Amount Budgeted NPA 11/12		\$ 900,000
Prior Board Authorization as of 11/17/2011		\$ 809,131
	Balance	\$ 90,869
Positive Adjustment (See Below)		\$ 0
		\$ 90,869
Total Amount for these Contracts		\$ 126,890
	Balance	\$ -36,021

Adjustment					
NPA Budget 01-65000-0-57500-11800-5126-043-1400					
NPA	Service Description	Contract Number	Reduce (R) Eliminate (E)	Adjusted Amount	Comment

### Instructional Consultants

2011-2012 Budget 01-65000-0-57500-11900-5802-043-1400

Instructional Consultant	SSID	Service Description	Contract Number	Cost Not to Exceed
Auditory Processing Center of Pasadena	2145849985	IEE	#31-SPED12116	\$1,450
Dr Rebecca Ruberg	4103152560	Expert Witness	#30-SPED12113	Increase \$600 (*Total: \$1,650*)
Kelter Center	7104332856	IEE: Reading	#34-SPED12133	\$800
Century City Optometric	7119533046	IEE: Vision	#33-SPED12118	\$510
The Speech Therapy Group	08/16/1995	Speech Therapy	#3-SPED12019	Increase: \$4,400 (Total: \$8,000)
Total Recall Captioning, Inc	1103200503	Captioning Service	#38-SPED12140	\$53,015

Amount Budgeted Instructional Consultants 11/12		\$ 200,000
Prior Board Authorization as of 11/17/2011		\$ -318,100
	Balance	\$ -118,100
Positive Adjustment (See Below)		\$ 0
		\$ -118,100
Total Amount for these Contracts		\$ 60,775
	Balance	\$ -178,875

Adjustment					
Instructional Consultants Budget 01-65000-0-57500-11900-5802-043-1400					
Instructional Consultant	Service Description	Contract Number	Reduce (R) Eliminate (E)	Adjusted Amount	Comment

### Non-Instructional Consultants

2011-2012 Budget 01-65000-0-57500-11900-5890-043-1400

Non-Instructional Consultant	SSID	Service Description	Contract Number	Cost Not to Exceed
Parent Reimbursement	8103148738	Educ & IA support	#32-SPED12117	\$21,970
Parent Reimbursement	8174633668	OT & SLP	#7-SPED12043 *Increase*	\$17,850 (Total: \$42,210)
West Shield Adolescent Services	4103134830	Escort Service to NPS	#35-SPED12134	\$3,500
Parent Reimbursement	4103134830	Travel Reimbursement	#36-SPED12135	\$1,200
LA Checker Cab	11/12/2000	Transportation	#37-SPED12138	\$1,430

Amount Budgeted Non-Instructional Consultants 11/12		\$ 300,000
Prior Board Authorization as of 11/17/2011		\$ 272,083
	Balance	\$ 27,917
Positive Adjustment (See Below)		\$ 0
		\$ 27,917
Total Amount for these Contracts		\$ 45,950
	Balance	\$ -18,033

Adjustment					
Non-Instructional Consultants Budget 01-65000-0-57500-11900-5890-043-1400					
Non- Instructional Consultant	Service Description	Contract Number	Reduce (R) Eliminate (E)	Adjusted Amount	Comment

**Legal**

2011-2012 Budget 01-65000-0-57500-11900-5820-043-1400

Legal Contractor	Service Description	Contract Number	Cost Not to Exceed

Amount Budgeted Legal Services 11/12		\$ 200,000
Prior Board Authorization as of 11/17/2011		200,000
	Balance	\$ 0
Adjustments for this period		\$ 0
		0
Total Amount for these Contracts		\$ 0
	Balance	\$ 0

Adjustment				
Legal Services Budget 01-65000-0-57500-11900-5820-043-1400				
Legal Contractor	Contract Number	Reduce (R) Eliminate (E)	Adjusted Amount	Comment

COMMENT: According to the Education Code SEC.21 Section 56342, prior to recommending a new or continued placement in a non-public, non-sectarian school, the Individualized Education Program (IEP) Team must submit the proposed recommendation to the local governing board for its review and recommendation regarding the cost of such placement.

The recommendations for these severely handicapped students are made by the District IEP Teams in accordance with State and Federal laws. The mandates of IDEA require non-public school services be provided at no expense to parents if there is not an appropriate public school program available. Funding comes from a SELPA-wide non-public school/non-public agency reserve account.

MOTION MADE BY:  
 SECONDED BY:  
 STUDENT ADVISORY VOTE:  
 AYES:  
 NOES:





TO: BOARD OF EDUCATION

ACTION/CONSENT

12/15/11

FROM: SANDRA LYON / JANECE L. MAEZ / VIRGINIA I. HYATT

RE: AWARD OF PURCHASE ORDERS – 2011-12

RECOMMENDATION NO. A.07

It is recommended that the Board of Education approve the following Purchase Orders and Changed Purchase Orders from November 7, 2011, through December 6, 2011, for fiscal /12.

MOTION MADE BY:

SECONDED BY:

STUDENT ADVISORY VOTE:

AYES:

NOES:

PURCHASE ORDERS TO BE APPROVED AT THE BOARD MEETING OF DECEMBER 15, 2011

U-GENERAL FUND, UNRESTRICTED R-GENERAL FUND, RESTRICTED A-ADULT ED CD-CHILD DEVELOPMENT F-CAFETERIA  
 SF-SPECIAL FINANCING (FLEX) BB,X-BONDS D-DEVELOPER FEES SR-SPECIAL RESERVE CAPITAL  
 DF-DEFERRED MAINTENANCE SM-STATE MODERNIZATION

PO NO.	VENDOR	DESCRIPTION	LOCATION	AMOUNT	
<u>*** NEW PURCHASE ORDERS ***</u>					
123278	A Z BUS SALES INC	Open order for parts/Transp.	TRANSPORTATION	6,000.00	R
123088	A. G. LAYNE INC	OPEN ORDER OPERATIONS VEHICLES	GROUNDS MAINTENANCE	1,020.00	R
123047	AAA FLAG AND BANNER/W.L.A.	signs for synth fields	THEATER OPERATIONS&FACILITY PR	1,737.08	U
123194	AAHS ENGRAVING	GENERAL SUPPLIES/MATERIALS	BOE/SUPERINTENDENT	600.00	U
123294	ABC-CLIO	BOOKS	SANTA MONICA HIGH SCHOOL	1,000.00	U
123055	ABF CHEMICAL EXTERMINATORS INC	OPERATIONS GROUNDS PEST CONT	GROUNDS MAINTENANCE	685.00	R
122912	ADR SECURITY SYSTEMS	ALARM SERVICE AND REPAIR	FACILITY MAINTENANCE	2,500.00	R
122887	ADT SECURITY SERVICES INC	SECURITY ALARM RESPONSE	SANTA MONICA HIGH SCHOOL	49.62	U
123094	ADVANCED BATTERY SYSTEMS	CUSTODIAL CART REPAIR	SANTA MONICA HIGH SCHOOL	516.21	U
123211	ADVANCED BATTERY SYSTEMS	CUSTODIAL CART BATTERY	SANTA MONICA HIGH SCHOOL	97.35	U
123255	ADVANCED ELECTRONICS	REPLACEMENT BATTERIES FOR WALK	EDISON ELEMENTARY SCHOOL	234.13	U
123279	ADVANCED ELECTRONICS	REPLACEMENT BATTERIES FOR WALK	EDISON ELEMENTARY SCHOOL	234.13	U
123049	AHERN RENTALS INC	OPEN ORDER GROUNDS EQUIP RENT	GROUNDS MAINTENANCE	1,800.00	R
123182	ALLAN'S AQUARIUM AND PETS	OPEN ORDER/SCIENCE	CHILD DEVELOPMENT CENTER	50.00	CD
123256	AMERICAN COUNCIL ON EDUCATION	GED PROCESSING FEES	ADULT EDUCATION CENTER	260.00	A
122999	AMERICAN TIME & SIGNAL CO.	ELECTRICAL SUPPLIES	FACILITY MAINTENANCE	2,000.00	R
123084	ANIMAL & INSECT PEST MGMT INC	OPERATIONS GROUNDS PEST CONT	GROUNDS MAINTENANCE	445.00	R
122894	APPLE COMPUTER CORP	COMPUTERS	SANTA MONICA HIGH SCHOOL	5,937.65	R
122921	APPLE COMPUTER CORP	TECH SUPPLIES FOR CLASSROOMS	EDISON ELEMENTARY SCHOOL	860.89	R
123017	APPLE COMPUTER CORP	apple equipment	GRANT ELEMENTARY SCHOOL	2,718.14	R
123026	APPLE COMPUTER CORP	CLASS/STAFF TECHNOLOGY EQUIP	SPECIAL EDUCATION REGULAR YEAR	13,867.51	R
123033	APPLE COMPUTER CORP	COMPUTER SUPPLIES	JOHN MUIR ELEMENTARY SCHOOL	761.69	U
122890	APPLE COMPUTER INC.	Open Supplies/Repair	INFORMATION SERVICES	3,000.00	U
123119	APPLE COMPUTER INC.	COMPUTER SUPPLIES	SANTA MONICA HIGH SCHOOL	61.29	U
123120	APPLE COMPUTER INC.	COMPUTER SUPPLIES	WILL ROGERS ELEMENTARY SCHOOL	267.66	U
123277	ARGO FLEET SERVICES	Parts/Transportation Dept.	TRANSPORTATION	376.91	R
122980	ATLANTIC EXPRESS OF LA INC	5TH GRADE COLLEGE TRIP	EDISON ELEMENTARY SCHOOL	455.00	R
122981	ATLANTIC EXPRESS OF LA INC	5TH GRADE TRIP TO CATALINA	EDISON ELEMENTARY SCHOOL	1,240.00	R
123035	ATLANTIC EXPRESS OF LA INC	TRANSPORTATION	SANTA MONICA HIGH SCHOOL	430.00	U
123292	ATLANTIC EXPRESS OF LA INC	TRANSPORTATION FOR A 5TH GRADE	WEBSTER ELEMENTARY SCHOOL	1,900.00	R
123050	ATLAS TRACKS INC	MALIBU HI TRACK REPAIR	GROUNDS MAINTENANCE	1,750.00	R
122902	ATTAINMENT COMPANY	GO TALK 9+ COMM. DEVICE	SPECIAL EDUCATION REGULAR YEAR	204.51	R
122859	B & H PHOTO VIDEO	SOUND SYSTEM	CURRICULUM AND IMC	221.11	R
122962	B & H PHOTO VIDEO	COMPUTER LAB SUPPLIES	WILL ROGERS ELEMENTARY SCHOOL	610.71	U
122888	BADT, JONATHAN	MILEAGE REIMBURSEMENT:BADT	SPECIAL EDUCATION REGULAR YEAR	1,500.00	R
122991	BARNES & NOBLE/THOUSAND OAKS	MUSIC THEORY/ENGLISH MATERIALS	MALIBU HIGH SCHOOL	1,799.53	R
123139	BON AIR INC	CONSTRUCTION	SANTA MONICA HIGH SCHOOL	8,380.00	U
123065	BOONE, LARRY	REIMBURSEMENT	SANTA MONICA HIGH SCHOOL	250.00	U
123083	BOURGET BROS	OPEN ORDER OPERATIONS GROUNDS	GROUNDS MAINTENANCE	1,200.00	R
123167	BRAINPOP	SUBSCRIPTION FOR CLASSROOM	MCKINLEY ELEMENTARY SCHOOL	195.00	R
123137	C & L SUPPLY COMPANY	AUTO FLUSH CLAMP	WEBSTER ELEMENTARY SCHOOL	374.34	R
122939	CALIFORNIA OFFICE SYSTEMS INC	OFFICE SUPPLIES	MALIBU HIGH SCHOOL	677.00	U
122974	CALIFORNIA OFFICE SYSTEMS INC	Open PO for school supplies	FRANKLIN ELEMENTARY SCHOOL	2,500.00	R
122989	CALIFORNIA OFFICE SYSTEMS INC	SPECIAL ED DEPARTMENT SUPPLIES	MALIBU HIGH SCHOOL	112.52	R
123126	CALIFORNIA OFFICE SYSTEMS INC	4 DRWR LATEREL FILING CABINET	STUDENT SERVICES	537.51	U
123138	CALIFORNIA OFFICE SYSTEMS INC	OFFICE SUPPLIES	PT DUME ELEMENTARY SCHOOL	178.26	U
123186	CALIFORNIA OFFICE SYSTEMS INC	office supplies	GRANT ELEMENTARY SCHOOL	600.00	R
123233	CALIFORNIA OFFICE SYSTEMS INC	OPEN ORDER/INST SUP/HUMANITIES	JOHN ADAMS MIDDLE SCHOOL	50.00	U
122995	CALLOWAY HOUSE INC	classroom supplies	GRANT ELEMENTARY SCHOOL	125.17	R

PURCHASE ORDERS TO BE APPROVED AT THE BOARD MEETING OF DECEMBER 15, 2011

U-GENERAL FUND,UNRESTRICTED R-GENERAL FUND,RESTRICTED A-ADULT ED CD-CHILD DEVELOPMENT F-CAFETERIA  
 SF-SPECIAL FINANCING (FLEX) BB,X-BONDS D-DEVELOPER FEES SR-SPECIAL RESERVE CAPITAL  
 DF-DEFERRED MAINTENANCE SM-STATE MODERNIZATION

PO NO.	VENDOR	DESCRIPTION	LOCATION	AMOUNT	
122586	CANON BUSINESS SOLUTIONS-WEST	CANON COPIER MAINT AGREEMENT	SMASH SCHOOL	1,118.40	R
123284	CANON BUSINESS SOLUTIONS-WEST	CANON COPIER MAINT AGREEMENT	CHILD DEVELOPMENT CENTER	616.00	CD
123283	CANON FINANCIAL SERVICES	CANON COPIER IR6055 LEASE	CHILD DEVELOPMENT CENTER	2,244.31	CD
122947	CARBIDE SAW	OUTSTANDING INVOICE	MALIBU HIGH SCHOOL	34.00	R
122416	CDW-G COMPUTING SOLUTIONS	TECHNOLOGY EQUIPMENT FOR SPED	MALIBU HIGH SCHOOL	858.02	R
122885	CDW-G COMPUTING SOLUTIONS	REPLACEMENT LIGHT FOR RM.10	EDISON ELEMENTARY SCHOOL	267.88	R
122944	CDW-G COMPUTING SOLUTIONS	PROJECTOR BULBS	MALIBU HIGH SCHOOL	393.38	R
122952	CDW-G COMPUTING SOLUTIONS	TARGUS VERSAVU KB & CS F/IPAD2	SMASH SCHOOL	453.39	R
123021	CDW-G COMPUTING SOLUTIONS	COMPUTER SUPPLIES	SANTA MONICA HIGH SCHOOL	693.74	R
123032	CDW-G COMPUTING SOLUTIONS	TARGUS VERSAVU KB & CS F/IPAD2	SMASH SCHOOL	346.87	R
123051	CDW-G COMPUTING SOLUTIONS	apple equipment	GRANT ELEMENTARY SCHOOL	1,399.97	R
123158	CENTER THEATER GROUP	ENROLLMENT FEES	SANTA MONICA HIGH SCHOOL	150.00	U
122913	CHANNING L. BETE CO INC	NURSES AED EQUIPMENTS FOR CPR	HEALTH SERVICES	481.06	U
122882	CHEVRON U.S.A. INC.	Open order for fuel costs	TRANSPORTATION	15,000.00	R
122957	CITY OF SANTA MONICA-PKS/REC	SUMMER/IISS & CK	CHILD DEVELOPMENT CENTER	173.25	CD
122929	COACH AMERICA LOS ANGELES	TRANSPORTATION	SANTA MONICA HIGH SCHOOL	1,600.00	U
122948	COACH AMERICA LOS ANGELES	ATHLETIC TRANSPORTATION	MALIBU HIGH SCHOOL	1,150.00	U
122966	COACH AMERICA LOS ANGELES	TRANSPORTATION	SANTA MONICA HIGH SCHOOL	1,200.00	U
123286	COACH AMERICA LOS ANGELES	TRANSPORTATION	SANTA MONICA HIGH SCHOOL	1,622.25	U
123121	COMMUNITY CARE LICENSING	LICENSING	CHILD DEVELOPMENT CENTER	4,290.00	CD
123071	COMTRONICS	PROJECTOR SCREEN FOR BRDROOM	BOE/SUPERINTENDENT	602.08	U
123027	CPI/CRISIS PREVENTION INST INC	CPI TRAINER/BOEWE ANNUAL FEE	SPECIAL EDUCATION REGULAR YEAR	125.00	R
122940	CURRICULUM ASSOC INC	CASHEE MATERIALS	MALIBU HIGH SCHOOL	3,819.18	U
123038	DEMCO INC	LIBRARY SUPPLIES	ROOSEVELT ELEMENTARY SCHOOL	193.83	U
123229	DIRECT SOURCE COMMUNICATIONS	SMARTBOARD MOVE LMS TO SAMOHI	SPECIAL EDUCATION REGULAR YEAR	975.00	R
122816	DISCOUNT SCHOOL SUPPLY	INSTRUCTIONAL	CHILD DEVELOPMENT CENTER	100.06	CD
122900	DISCOUNT SCHOOL SUPPLY	OT SCHOOL SUPPLIES	SPECIAL EDUCATION REGULAR YEAR	106.34	R
122919	DISCOUNT SCHOOL SUPPLY	INSTRUCTIONAL SUPPLIES	CHILD DEVELOPMENT CENTER	100.08	CD
123082	DLT SOLUTIONS LLC	Exchange Maintenance	INFORMATION SERVICES	896.05	U
123036	EAI EDUCATION	LITERACY SUPPLIES	JOHN MUIR ELEMENTARY SCHOOL	303.50	R
122883	EXECUTIVE ENVIRONMENTAL	ENVIRONMENTAL SERVICES	FACILITY MAINTENANCE	397.95	R
122967	FERGUSON ENTERPRISES INC	DYSON HANDDRYERS	ROOSEVELT ELEMENTARY SCHOOL	10,892.23	R
122884	FLOWERS,LYNNE	MILEAGE REIMBURSEMENT:FLOWERS	SPECIAL EDUCATION REGULAR YEAR	135.00	R
122941	FOLLETT EDUCATIONAL SERVICES	GEOMETRY BOOKS	MALIBU HIGH SCHOOL	3,277.18	R
123072	FOLLETT EDUCATIONAL SERVICES	TEXTBOOKS	SANTA MONICA HIGH SCHOOL	1,743.30	U
123054	FREDDIE MAC'S INC.	OPERATIONS GROUNDS HAULER	GROUNDS MAINTENANCE	325.00	R
122856	FREY SCIENTIFIC/SCHOOL SPECIAL	NEW DISHWASHER FOR SCIENCE RM	LINCOLN MIDDLE SCHOOL	725.00	BB
122875	FRY'S ELECTRONICS	TECH SUP/GIFT-INST MUSIC	JOHN ADAMS MIDDLE SCHOOL	800.00	R
122815	GALE SUPPLY CO	CUSTODIAL SUPPLIES	MCKINLEY ELEMENTARY SCHOOL	1,652.02	U
122846	GALE SUPPLY CO	CUSTODIAL	CHILD DEVELOPMENT CENTER	2,048.44	CD
122931	GALE SUPPLY CO	Custodial Supplies	FRANKLIN ELEMENTARY SCHOOL	893.56	U
122979	GALE SUPPLY CO	Custodial Supplies	FRANKLIN ELEMENTARY SCHOOL	819.10	U
122984	GALE SUPPLY CO	CLEANING ABSORBENT COMPOUND	WEBSTER ELEMENTARY SCHOOL	75.69	R
123042	GALE SUPPLY CO	CUSTODIAL	CHILD DEVELOPMENT CENTER	193.92	CD
123148	GALE SUPPLY CO	custodial supplies	GRANT ELEMENTARY SCHOOL	897.76	U
123151	GALE SUPPLY CO	custodial supplies Barnum Hall	THEATER OPERATIONS&FACILITY PR	145.63	R
123184	GALE SUPPLY CO	CUSTODIAL	CHILD DEVELOPMENT CENTER	554.44	CD
123185	GALE SUPPLY CO	CUSTODIAL	CHILD DEVELOPMENT CENTER	867.83	CD
123254	GALE SUPPLY CO	CUSTODIAL SUPPLIES	LINCOLN MIDDLE SCHOOL	1,054.00	U
123258	GALE SUPPLY CO	CUSTODIAL SUPPLIES	ADULT EDUCATION CENTER	728.80	A
123039	GBC/EDUCATION DEPARTMENT	LAMINATE	ROOSEVELT ELEMENTARY SCHOOL	196.20	U

## PURCHASE ORDERS TO BE APPROVED AT THE BOARD MEETING OF DECEMBER 15, 2011

U-GENERAL FUND,UNRESTRICTED R-GENERAL FUND,RESTRICTED A-ADULT ED CD-CHILD DEVELOPMENT F-CAFETERIA  
 SF-SPECIAL FINANCING (FLEX) BB,X-BONDS D-DEVELOPER FEES SR-SPECIAL RESERVE CAPITAL  
 DF-DEFERRED MAINTENANCE SM-STATE MODERNIZATION

PO NO.	VENDOR	DESCRIPTION	LOCATION	AMOUNT	
123058	GLENCOE/MACMILLAN/MCGRAW-HILL	TEXTBOOKS	SANTA MONICA HIGH SCHOOL	907.17	U
122820	GREAT SOURCE EDUCATION GROUP	Consumables	FRANKLIN ELEMENTARY SCHOOL	588.45	R
122878	GREAT SOURCE EDUCATION GROUP	RESOURCE BOOKS	OLYMPIC CONTINUATION SCHOOL	73.69	R
123305	HAZELDEN EDUC MAT	INSTRUCTIONAL ANTI-BULLYING	ROOSEVELT ELEMENTARY SCHOOL	2,295.78	R
122892	HEDRICK FIRE PROTECTION	FIRE SPRINKLER INSPECTION	CHILD DEVELOPMENT CENTER	350.00	CD
123169	HEDRICK FIRE PROTECTION	5YR FIRE SPRINKLER CORRECTIONS	FACILITY MAINTENANCE	260.00	R
123174	HEDRICK FIRE PROTECTION	5YR SPRINKLER CORRECTIONS	FACILITY MAINTENANCE	1,600.00	R
123302	HEINEMANN WORKSHOPS	LITERACY INSTRUCTIONAL BOOKS	ROOSEVELT ELEMENTARY SCHOOL	423.34	R
123046	HELD, PAMELA	MATH SKILLS MATERIALS	WEBSTER ELEMENTARY SCHOOL	78.57	U
122927	HERRERA, MAYRA	REIMBURSEMENT-WORKSHOP	WILL ROGERS ELEMENTARY SCHOOL	75.00	R
123007	HOME DEPOT- L.A.	FOR BUILDING MATERIALS	FACILITY MAINTENANCE	5,000.00	R
123183	HOME DEPOT- L.A.	OPEN ORDER/SCIENCE	CHILD DEVELOPMENT CENTER	50.00	CD
122886	HOUGHTON MIFFLIN HARCOURT	INSTRUCTIONAL	CHILD DEVELOPMENT CENTER	3,684.83	CD
123022	INDIAN JEWELERS SUPPLY CO.INC	INSTRUCTIONAL MATERIALS	ADULT EDUCATION CENTER	274.85	A
122978	INSTA-TUNE	SMOG CHECK ON VEHICLE #44	FOOD SERVICES	300.00	F
123265	INSTA-TUNE	Smog	INFORMATION SERVICES	59.00	U
122955	INTELLI-TECH	LAPTOPS	CHILD DEVELOPMENT CENTER	8,677.15	CD
122956	INTELLI-TECH	COMPUTER	CHILD DEVELOPMENT CENTER	958.52	CD
122983	INTELLI-TECH	COMPUTER & MONITOR	PURCHASING/WAREHOUSE	1,168.00	U
122990	INTELLI-TECH	COMPUTERS MAIN & ATTND OFFICE	MALIBU HIGH SCHOOL	1,720.85	U
123077	INTELLI-TECH	Computer	INFORMATION SERVICES	2,537.46	U
123078	INTELLI-TECH	Smart Response System	INFORMATION SERVICES	2,296.44	U
123206	INTELLI-TECH	TECHNOLOGY FOR LIBRARY	MALIBU HIGH SCHOOL	1,348.50	R
122880	INTERNATIONAL PAPER	OFFICE SUPPLIES - PAPER	PERSONNEL SERVICES	227.90	U
122910	INTERNATIONAL PAPER	COPY PAPER	SANTA MONICA HIGH SCHOOL	4,233.88	U
122937	INTERNATIONAL PAPER	COPIER PAPER	MALIBU HIGH SCHOOL	3,000.00	R
123200	INTERNATIONAL PAPER	OPEN ORD/COPY PAPER	JOHN ADAMS MIDDLE SCHOOL	1,660.00	U
123272	INTERNATIONAL PAPER	XEROX PAPER	OLYMPIC CONTINUATION SCHOOL	375.17	U
123079	IRON MOUNTAIN INFORMATION MGMT	Maintenance off site storage	INFORMATION SERVICES	3,500.00	U
123150	JONES & MADHAVAN	ENGINEERING DESIGN	FACILITY MAINTENANCE	22,000.00	DF
122936	JORGENSON LOCKERS	GYM BENCH SEATS	SANTA MONICA HIGH SCHOOL	1,329.58	R
123002	JUNIOR LIBRARY GUILD	LIBRARY SUPPLIES	GRANT ELEMENTARY SCHOOL	328.00	R
122938	KELLETT, GREVILLE	REIMBURSEMENT FOR FEDEX	THEATER OPERATIONS&FACILITY PR	28.86	R
122945	KEY CURRICULUM PRESS	MATH SUPPLIES	MALIBU HIGH SCHOOL	115.78	R
123273	KING OFFICE SERVICES	FURNITURE P/U-BARNUM/DISTRICT	BUSINESS SERVICES	3,110.63	R
123274	KING RELOCATION SERVICES	ADMINISTRATIVE MOVE	LINCOLN MIDDLE SCHOOL	1,449.00	BB
122879	KNOX COMPANY,THE	KNOX BOX FOR LOS AMIGOS	CHILD DEVELOPMENT CENTER	247.42	CD
122789	KORADE & ASSOCIATE BUILDERS	OFFICE AND CLASSROOM BLINDS	MCKINLEY ELEMENTARY SCHOOL	1,007.27	R
122954	KORADE & ASSOCIATE BUILDERS	PLAYGROUND ASPHALT AT GRANT	FACILITY MAINTENANCE	2,000.00	R
123066	KORADE & ASSOCIATE BUILDERS	DYSON HANDDRYERS	ROOSEVELT ELEMENTARY SCHOOL	6,085.92	R
123149	KORADE & ASSOCIATE BUILDERS	CONSTRUCTION	SANTA MONICA HIGH SCHOOL	14,734.00	R
123164	KORADE & ASSOCIATE BUILDERS	EXTEND DRAINAGE AT MALIBU	FACILITY MAINTENANCE	1,774.00	R
123165	KORADE & ASSOCIATE BUILDERS	BOARD UP COMPUTER LAB PT. DUME	FACILITY MAINTENANCE	377.00	R
122853	LAKESHORE	OPEN ORDER/INSTRUCTIONAL	CHILD DEVELOPMENT CENTER	500.00	CD
122922	LAKESHORE	OPEN ORDER/INSTRUCTIONAL	CHILD DEVELOPMENT CENTER	250.00	CD
123067	LAKESHORE	CLASSROOM MATERIALS	SAINT ANNE'S PRIVATE SCHOOL	352.64	R
123069	LAKESHORE	classroom supplies	GRANT ELEMENTARY SCHOOL	625.00	U
123107	LAKESHORE	OPEN ORDER/INSTRUCTIONAL	CHILD DEVELOPMENT CENTER	425.00	CD
123122	LAKESHORE	OPEN ORDER/INSTRUCTIONAL	CHILD DEVELOPMENT CENTER	100.00	CD
123172	LAKESHORE	OPEN ORDER/SUPPLIES	CHILD DEVELOPMENT CENTER	350.00	CD
123179	LAKESHORE	OPEN ORDER/INSTRUCTIONAL	CHILD DEVELOPMENT CENTER	250.00	CD

## PURCHASE ORDERS TO BE APPROVED AT THE BOARD MEETING OF DECEMBER 15, 2011

U-GENERAL FUND, UNRESTRICTED R-GENERAL FUND, RESTRICTED A-ADULT ED CD-CHILD DEVELOPMENT F-CAFETERIA  
 SF-SPECIAL FINANCING (FLEX) BB,X-BONDS D-DEVELOPER FEES SR-SPECIAL RESERVE CAPITAL  
 DF-DEFERRED MAINTENANCE SM-STATE MODERNIZATION

PO NO.	VENDOR	DESCRIPTION	LOCATION	AMOUNT	
123180	LAKESHORE	OPEN ORDER/INSTRUCTIONAL	CHILD DEVELOPMENT CENTER	150.00	CD
123285	LAKESHORE	CLASSROOM SUPPLIES	OLYMPIC CONTINUATION SCHOOL	200.00	R
123028	LAVALLEE LIFE JACKETS INC.	STUDENT PE EQUIPMENT: VAN COTT	SPECIAL EDUCATION REGULAR YEAR	232.11	R
123112	LEVITON MANUFACTURING CO INC.	repair remote control module	THEATER OPERATIONS&FACILITY PR	280.00	R
123086	LOS ANGELES FIRE SYSTEMS	FIRE TESTING	CHILD DEVELOPMENT CENTER	450.00	CD
122896	LRP PUBLICATION	RENEWAL FOR MAGAZINE SUBSCR.	SPECIAL EDUCATION REGULAR YEAR	302.00	R
123234	MACMALL/PC MALL	OPEN ORDER/TECH SUP/PERMIT	JOHN ADAMS MIDDLE SCHOOL	500.00	R
123004	MAD SCIENCE OF LOS ANGELES	WINTER BREAK/CREST	CHILD DEVELOPMENT CENTER	1,092.00	CD
122907	MARYLAND MATERIALS LLC	PLAYGROUND PARTS & EQUIP	FACILITY MAINTENANCE	500.00	R
122986	MASUNE/MEDCO SCHOOL FIRST AID	ATHLETIC TRAINER SUPPLIES	MALIBU HIGH SCHOOL	1,000.00	U
123003	MASUNE/MEDCO SCHOOL FIRST AID	HEALTH/SAFETY	CHILD DEVELOPMENT CENTER	107.21	CD
123012	MEDCO SUPPLY CO	Nursing Supplies	CABRILLO ELEMENTARY SCHOOL	79.10	R
123220	MIRACLE PLAYGROUND SALES OF	PLAYGROUND SAFETY SIGN	FACILITY MAINTENANCE	283.43	R
122852	MIRMONT UNIFORMS	BAND UNIFORMS/GIFT-INST MUSIC	JOHN ADAMS MIDDLE SCHOOL	245.58	R
122857	MOBILE MODULAR	CUSTOM DRAWINGS	MALIBU HIGH SCHOOL	5,596.00	BB
123260	MORROW, JENNY	SCHOLARSHIP	OLYMPIC CONTINUATION SCHOOL	500.00	R
123076	NATALIE BURTON	BLINDS FOR PRINC/AP OFFICES	ROOSEVELT ELEMENTARY SCHOOL	223.69	U
122876	NATIONAL HEAD START ASSOC.	REGISTRATION FEES	CHILD DEVELOPMENT CENTER	100.00	CD
122855	NETWORLD SOLUTIONS INC	TELECOMMUNICATION RACKS	LINCOLN MIDDLE SCHOOL	11,960.00	BB
122835	NEVCO SCOREBOARD COMPANY	SCOREBOARD REPAIR	SANTA MONICA HIGH SCHOOL	260.30	SR
123099	NEXTEL OF CALIFORNIA INC	MOBILE HOTSPOT UNITS	INFORMATION SERVICES	2,128.58	U
122946	NICK RAIL MUSIC	OPEN PURCHASER ORDER	MALIBU HIGH SCHOOL	400.00	R
122905	OAKSTONE LEGAL & BUSINESS	ONE YEAR SUBSCRIPTION/MAGAZINE	SPECIAL EDUCATION REGULAR YEAR	164.00	R
122567	OLIVER WORLDCLASS LABS INC	VIDEO PROJECTOR	PT DUME ELEMENTARY SCHOOL	810.08	R
123275	OPPO DIGITAL INC.	BLURAY PLAYER -BH SUMMER 2011	SANTA MONICA HIGH SCHOOL	653.46	R
123085	P O BAHN & SONS	OPEN ORDER OPERATIONS GROUNDS	GROUNDS MAINTENANCE	1,000.00	R
123006	PACIFIC LIFT & EQUIPMENT	SAMOHI AUTO SHOP	FACILITY MAINTENANCE	1,575.90	R
123117	PATTONS PHARMACY	TB SOLUTION AND SYRINGES	HEALTH SERVICES	851.09	U
123010	PAWAR TRANSPORTATION LLC	TRANSPORTATION SERVICE VARIOUS	SPECIAL EDUCATION REGULAR YEAR	10,000.00	R
123235	PEPPER OF LOS ANGELES	OPEN ORDER/MUSIC SUP/GIFT-INST	JOHN ADAMS MIDDLE SCHOOL	2,000.00	R
123219	PLUMBMASTER INC	PLUMBING SUPPLIES	FACILITY MAINTENANCE	500.00	R
123197	POLARIS LIGHTING ASSOCIATES	FIX RIGGING SYSTEM IN BH	SANTA MONICA HIGH SCHOOL	4,429.00	R
123189	POSTMASTER-SANTA MONICA	Postage Stamps	FRANKLIN ELEMENTARY SCHOOL	144.21	U
122868	PRIORITY MAILING SYSTEMS INC	POSTAGE MACHINE INK & LABELS	PURCHASING/WAREHOUSE	655.22	U
123081	QSS	QSS Webinar	INFORMATION SERVICES	500.00	U
123063	QUARTERMASTER	SECURITY OFFICER SUPPLIES	ADULT EDUCATION CENTER	222.79	A
123064	QUARTERMASTER	SECURITY UNIFORMS	SANTA MONICA HIGH SCHOOL	210.78	U
123239	QUARTERMASTER	SECURITY UNIFORMS - ADDITION	JOHN ADAMS MIDDLE SCHOOL	32.76	R
122863	RALPHS MARKET	GROCERIES	WEBSTER ELEMENTARY SCHOOL	860.00	R
122723	REDWOOD PRESS INC	Report Card Window Envelopes	INFORMATION SERVICES	2,084.49	U
122847	REGENCY ENTERPRISES INC.	fluorescent lights	THEATER OPERATIONS&FACILITY PR	29.17	R
122895	REGENCY ENTERPRISES INC.	LIGHTING	JOHN MUIR ELEMENTARY SCHOOL	356.16	U
122933	REGENCY ENTERPRISES INC.	Light Bulbs	FRANKLIN ELEMENTARY SCHOOL	516.21	U
123093	REGENCY ENTERPRISES INC.	LIGHTS	MCKINLEY ELEMENTARY SCHOOL	247.45	U
123300	RELIANT TESTING ENGINEERS INC	SOIL/CONCRETE TEST	CHILD DEVELOPMENT CENTER	300.00	CD
122899	REMEDIA PUBLICATIONS	LIFE SKILLS READING MATERIAL	SPECIAL EDUCATION REGULAR YEAR	211.92	R
122865	RHYTHM CHILD NETWORK	EVENT ACTIVITY/HS	CHILD DEVELOPMENT CENTER	350.00	CD
123059	RICOH BUSINESS SOLUTIONS	MANAGING & OPERATING PRINTSHOP	PRINTING SERVICES	18,826.35	U
123178	RKDM ENVIRO-ENERGY SYSTEMS	BOILER SERVICE AT LINCOLN	FACILITY MAINTENANCE	2,470.00	R
123024	ROSENBAUM, JOYCE	STUDENT PT ACCESSORIES/EQUIP	SPECIAL EDUCATION REGULAR YEAR	113.15	R
123217	RUSSELL SIGLER INC	HVAC SUPPLIES	FACILITY MAINTENANCE	500.00	R

## PURCHASE ORDERS TO BE APPROVED AT THE BOARD MEETING OF DECEMBER 15, 2011

U-GENERAL FUND,UNRESTRICTED R-GENERAL FUND,RESTRICTED A-ADULT ED CD-CHILD DEVELOPMENT F-CAFETERIA  
 SF-SPECIAL FINANCING (FLEX) BB,X-BONDS D-DEVELOPER FEES SR-SPECIAL RESERVE CAPITAL  
 DF-DEFERRED MAINTENANCE SM-STATE MODERNIZATION

PO NO.	VENDOR	DESCRIPTION	LOCATION	AMOUNT	
122869	S & S RENT A FENCE INC	Portable toilets	THEATER OPERATIONS&FACILITY PR	1,180.00	R
123205	S & S RENT A FENCE INC	ASPHALT CORING	EDISON ELEMENTARY SCHOOL	140.30	BB
122971	S A CONSULTING INC	Label,Cartridges etc	INFORMATION SERVICES	1,000.00	U
123270	SAMY'S CAMERA SHOP	MEMORY CARD	OLYMPIC CONTINUATION SCHOOL	60.96	U
122810	SCHOLASTIC INC	Consumables	FRANKLIN ELEMENTARY SCHOOL	148.66	R
122943	SCHOLASTIC MAGAZINES	READ 180	JOHN MUIR ELEMENTARY SCHOOL	2,100.00	R
122982	SCHOOL HEALTH CORPORATION	NURSE SUPPLIES	MCKINLEY ELEMENTARY SCHOOL	379.52	R
122472	SCHOOL OUTFITTERS LLC	LIBRARY SUPPLIES	SANTA MONICA HIGH SCHOOL	95.46	U
123216	SCHOOL OUTFITTERS LLC	TECHNOLOGY EQUIPMENT FOR SPED	MALIBU HIGH SCHOOL	135.54	R
122996	SCHOOL SPECIALTY INC	classroom supplies	GRANT ELEMENTARY SCHOOL	30.10	U
122998	SCHOOL SPECIALTY INC	O.T. SUPPLIES	WILL ROGERS ELEMENTARY SCHOOL	461.64	R
123171	SCHOOL SPECIALTY INC	Classroom Table	CABRILLO ELEMENTARY SCHOOL	244.13	R
123251	SCPMA-HR	ANNUAL MEMBERSHIP-SCPMA-HR	PERSONNEL COMMISION	100.00	U
122589	SEHI COMPUTER PRODUCTS	INK CARTRIDGE	OLYMPIC CONTINUATION SCHOOL	237.24	U
122881	SEHI COMPUTER PRODUCTS	PRINTER INK	PERSONNEL SERVICES	500.00	U
122930	SEHI COMPUTER PRODUCTS	INK CARTRIDGES	SANTA MONICA HIGH SCHOOL	3,000.00	U
122942	SEHI COMPUTER PRODUCTS	PRINTER TONER SUPPLIES	MALIBU HIGH SCHOOL	844.95	R
122964	SEHI COMPUTER PRODUCTS	ink cartridges for speech	GRANT ELEMENTARY SCHOOL	207.50	R
122987	SEHI COMPUTER PRODUCTS	INK CARTRIDGE	MALIBU HIGH SCHOOL	204.58	R
122988	SEHI COMPUTER PRODUCTS	LASER JET PRINTER	MALIBU HIGH SCHOOL	315.94	R
123134	SEHI COMPUTER PRODUCTS	HP LASERJET PRINTER P2055DN	SMASH SCHOOL	934.09	R
123147	SEHI COMPUTER PRODUCTS	drum for printer	GRANT ELEMENTARY SCHOOL	182.29	R
123271	SEHI COMPUTER PRODUCTS	NETWORK SITE PRINTER	SANTA MONICA HIGH SCHOOL	317.36	U
123166	SIMPLEXGRINNELL	FIRE ALARM SERVICE AGREEMENT	FACILITY MAINTENANCE	59,330.00	R
122959	SIR SPEEDY PRINTING #0245	BUSINESS CARDS	CHILD DEVELOPMENT CENTER	28.41	CD
122961	SIR SPEEDY PRINTING #0245	BUSINESS CARDS	CHILD DEVELOPMENT CENTER	28.41	CD
123187	SIR SPEEDY PRINTING #0245	OPEN ORDER:PRINTING BAND/ORCH	LINCOLN MIDDLE SCHOOL	1,000.00	R
122925	SMART & FINAL	OPEN ORDER/CLEANING & COOKING	CHILD DEVELOPMENT CENTER	250.00	CD
123181	SMART & FINAL	OPEN ORDER/COOKING & SCIENCE	CHILD DEVELOPMENT CENTER	50.00	CD
123023	SMITH, BRADFORD	INSTRUCTIONAL MATERIALS	ADULT EDUCATION CENTER	250.00	A
123025	SMITH,LUZ ESTELLA	SPAN/ENGL LEGAL DICTIONARY	SPECIAL EDUCATION REGULAR YEAR	143.94	R
123298	SNADER AND ASSOCIATES INC.	VIDEO EQUIPMENT-BH SUMMER 2011	SANTA MONICA HIGH SCHOOL	8,429.73	R
122292	SO CAL SANITATION LLC	PERMANANT FENCING	SANTA MONICA HIGH SCHOOL	33,885.24	SR
123095	SOUTH BAY LANDSCAPING	SWING SPACE TURF REVITAL.	SANTA MONICA HIGH SCHOOL	4,025.00	SR
122630	SOUTHWEST SCHOOL SUPPLY	CLASSROOM SUPPLIES	WEBSTER ELEMENTARY SCHOOL	327.75	R
122963	SOUTHWEST SCHOOL SUPPLY	flags for school	GRANT ELEMENTARY SCHOOL	91.27	R
122994	SOUTHWEST SCHOOL SUPPLY	classroom supplies	GRANT ELEMENTARY SCHOOL	40.64	R
123173	SOUTHWEST SCHOOL SUPPLY	CLASSROOM SUPPLIES	WEBSTER ELEMENTARY SCHOOL	300.00	R
123080	SPARKY DATA & TELECOM	Install NetWork Jacks	INFORMATION SERVICES	200.00	U
123297	SPARKY DATA & TELECOM	INSTALL. OF NEW GATE BUZZER	ROOSEVELT ELEMENTARY SCHOOL	250.00	U
122951	SPECTRUM INDUSTRIES INC	SECURE LAPTOP LOCKERS	SMASH SCHOOL	1,689.60	R
123061	SPEEDO ELECTRIC CO	Open order for supplies/Rep.	TRANSPORTATION	500.00	R
122872	STAPLES BUSINESS ADVANTAGE	staples for assessment	CURRICULUM AND IMC	1,000.00	U
123108	STAPLES BUSINESS ADVANTAGE	OPEN ORDER/SUPPLIES	CHILD DEVELOPMENT CENTER	50.00	CD
123161	STAPLES BUSINESS ADVANTAGE	OPEN ORDER/SUPPLIES	CHILD DEVELOPMENT CENTER	75.00	CD
122918	STAPLES/P-U/SANTA MONICA/WILSH	OFFICE SUPPLIES	EDISON ELEMENTARY SCHOOL	200.00	R
122920	STAPLES/P-U/SANTA MONICA/WILSH	SUPPLIES FOR RECESS DUTY	EDISON ELEMENTARY SCHOOL	300.00	R
123198	STAPLES/P-U/VENICE/LINCOLN BL	OPEN ORD/INST SUP/HUMAN/TEAM	JOHN ADAMS MIDDLE SCHOOL	194.00	U
123238	STAPLES/P-U/VENICE/LINCOLN BL	CLASSROOM SUPPLIES	SANTA MONICA HIGH SCHOOL	80.00	R
123291	STAPLES/P-U/VENICE/LINCOLN BL	INSTRUCTIONAL SUPPLIES	OLYMPIC CONTINUATION SCHOOL	200.00	U

PURCHASE ORDERS TO BE APPROVED AT THE BOARD MEETING OF DECEMBER 15, 2011

U-GENERAL FUND,UNRESTRICTED R-GENERAL FUND,RESTRICTED A-ADULT ED CD-CHILD DEVELOPMENT F-CAFETERIA  
 SF-SPECIAL FINANCING (FLEX) BB,X-BONDS D-DEVELOPER FEES SR-SPECIAL RESERVE CAPITAL  
 DF-DEFERRED MAINTENANCE SM-STATE MODERNIZATION

PO NO.	VENDOR	DESCRIPTION	LOCATION	AMOUNT	
122935	STUDENT SUPPLY	student council order	GRANT ELEMENTARY SCHOOL	214.53	R
122960	SUMINSKI,MARK	REIMBURSEMENT	OLYMPIC CONTINUATION SCHOOL	938.00	R
122992	SUNTEX INTERNATIONAL INC	ONLINE STUDENT SUBSCRPTN (MATH)	MALIBU HIGH SCHOOL	204.00	R
122861	TAFI, MARY	GROCERIES	WEBSTER ELEMENTARY SCHOOL	153.09	R
123280	TANDUS US INC	Carpet for sound/light booth	THEATER OPERATIONS&FACILITY PR	1,434.71	R
123282	TANDUS US INC	Carpet for BH Green Room	THEATER OPERATIONS&FACILITY PR	2,037.94	R
123089	TARGET STORES	WINTER BREAK/CREST	CHILD DEVELOPMENT CENTER	400.00	CD
123109	TARGET STORES	OPEN ORDER/INSTRUCTIONAL	CHILD DEVELOPMENT CENTER	50.00	CD
123131	TARGET STORES	OPEN ORDER/SAFETY	CHILD DEVELOPMENT CENTER	300.00	CD
123263	TARGET STORES	OPEN ORDER/INSTRUCTIONAL	CHILD DEVELOPMENT CENTER	145.00	CD
123221	THE PROPHET CORP	INST SUP/GIFT/PE	JOHN ADAMS MIDDLE SCHOOL	225.67	R
122893	THERAPE SHOPPE INC	OT SUPPLIES/FISHER	SPECIAL EDUCATION REGULAR YEAR	159.72	R
122830	TUMBLEWEED TRANSPORTATION	CATALINA FIELD TRIP BUSES	JOHN ADAMS MIDDLE SCHOOL	2,600.00	R
123125	TUMBLEWEED TRANSPORTATION	BUS TRANSPORTATION	MCKINLEY ELEMENTARY SCHOOL	325.00	R
122953	U S BANK (GOVT CARD SERVICES)	Credit Card Purchases	INFORMATION SERVICES	743.65	U
122968	U S BANK (GOVT CARD SERVICES)	Credit Card	INFORMATION SERVICES	95.66	U
123203	U S BANK (GOVT CARD SERVICES)	MONOCULAR MICROSCOPES	EDISON ELEMENTARY SCHOOL	946.00	R
123193	U.S. EQUIPMENT CO.	REPAIR SUPPLIES	TRANSPORTATION	500.00	R
123162	U.S. POSTAL SERVICE	MAIL MACHINE POSTAGE	PURCHASING/WAREHOUSE	10,000.00	U
123068	UNGER TECHNOLOGIES INC	FAN BARRIER FOR LINCOLN POOL	FACILITY MAINTENANCE	5,290.00	R
122915	VONS MARKET-SANTA MONICA	OPEN ORDER/COOKING & SCIENCE	CHILD DEVELOPMENT CENTER	75.00	CD
123091	VONS STORE #2262	WINTER BREAK/CREST	CHILD DEVELOPMENT CENTER	340.00	CD
123090	WALKER MOTOR CO.	OPEN ORDER OPERATIONS VEHICLES	GROUNDS MAINTENANCE	1,000.00	R
123287	WALKER MOTOR CO.	MAINT. VEHICLE #65 REPAIR	FACILITY MAINTENANCE	850.10	R
122997	WALTERS WHOLESALE ELECTRIC CO	PROJ.SCREEN-BH SUMMER 2011	SANTA MONICA HIGH SCHOOL	21,950.64	R
123281	WARREN DISTRIBUTING INC.	OPEN ORDER VEHICLE PARTS	PURCHASING/WAREHOUSE	200.00	U
123040	WAXIE SANITARY SUPPLY	Custodial Supplies (Waxie)	FRANKLIN ELEMENTARY SCHOOL	478.02	U
123075	WAXIE SANITARY SUPPLY	CUSTODIAL	CHILD DEVELOPMENT CENTER	206.96	CD
123152	WAXIE SANITARY SUPPLY	Custodial supplies Barnum Hall	THEATER OPERATIONS&FACILITY PR	202.32	R
123170	WAXIE SANITARY SUPPLY	CUSTODIAL SUPPLIES	OLYMPIC CONTINUATION SCHOOL	159.34	R
123195	WAXIE SANITARY SUPPLY	CUSTODIAL	CHILD DEVELOPMENT CENTER	259.39	CD
123196	WAXIE SANITARY SUPPLY	CUSTODIAL	CHILD DEVELOPMENT CENTER	259.39	CD
123215	WAXIE SANITARY SUPPLY	custodial supplies	GRANT ELEMENTARY SCHOOL	237.62	U
122891	WESTERN PSYCHOLOGICAL	ASSESSMENT FORMS/OT/HARPER	SPECIAL EDUCATION REGULAR YEAR	150.22	R
123031	WILSON & VALLELY TOWING	TOWING SERVICE VEHICLE #83	FACILITY MAINTENANCE	91.00	R
122973	WITT COMPANY	Ink and Masters for copier	FRANKLIN ELEMENTARY SCHOOL	500.00	U
123247	WITT COMPANY	RIZO COPY SUPPLIES	WILL ROGERS ELEMENTARY SCHOOL	756.98	U
123048	WOLVERINE SPORTS	P.E. SUPPLIES	OLYMPIC CONTINUATION SCHOOL	76.15	R
123236	WOODWIND & THE BRASSWIND,THE	MUSIC INSTRUMENT/GIFT	JOHN ADAMS MIDDLE SCHOOL	2,398.04	R
123011	YALE/CHASE MATERIALS HANDLING	CUSTODIAL CART REPAIRS	SANTA MONICA HIGH SCHOOL	200.00	U
123087	YALE/CHASE MATERIALS HANDLING	OPEN ORDER OPERATIONS VEHICLES	GROUNDS MAINTENANCE	500.00	R
123207	YALE/CHASE MATERIALS HANDLING	REPAIR OF CUSTODIAL CART	MALIBU HIGH SCHOOL	100.00	R
				** NEW PURCHASE ORDERS	508,110.14

**\*\* FACILITY IMPROVEMENTS: BONDS/STATE MODERNIZATON/NEW CONSTRUCTION/DEVELOPER FEES \*\***

123140	AT&T	NETWORK EQUIPMENT	LINCOLN MIDDLE SCHOOL	22,184.85	BB
122858	CCS PRESENTATION SYSTEMS	SPARE BULBS FOR OFCI EQUIP.	JOHN ADAMS MIDDLE SCHOOL	6,230.47	BB
123143	FEDEX	OPEN PO FOR OVERNIGHT SHIPPING	BUSINESS SERVICES	300.00	BB
122836	SEHI COMPUTER PRODUCTS	PRINTERS FOR CLASSROOMS	MALIBU HIGH SCHOOL	2,153.25	
122837	SEHI COMPUTER PRODUCTS	CLASSROOM PRINTERS	JOHN ADAMS MIDDLE SCHOOL	6,227.25	
122838	SEHI COMPUTER PRODUCTS	CLASSROOM PRINTERS	LINCOLN MIDDLE SCHOOL	5,915.89	

SANTA MONICA-MALIBU UNIFIED SCHOOL DISTRICT

PURCHASE ORDERS TO BE APPROVED AT THE BOARD MEETING OF DECEMBER 15, 2011

U-GENERAL FUND,UNRESTRICTED R-GENERAL FUND,RESTRICTED A-ADULT ED CD-CHILD DEVELOPMENT F-CAFETERIA  
 SF-SPECIAL FINANCING (FLEX) BB,X-BONDS D-DEVELOPER FEES SR-SPECIAL RESERVE CAPITAL  
 DF-DEFERRED MAINTENANCE SM-STATE MODERNIZATION

PO NO.	VENDOR	DESCRIPTION	LOCATION	AMOUNT	
122854	SEHI COMPUTER PRODUCTS	CLASSROOM PRINTERS	SANTA MONICA HIGH SCHOOL	7,472.70	
122908	WESTERN FENCE & SUPPLY CO	LOCKSET INSTALLATION	MCKINLEY ELEMENTARY SCHOOL	1,452.04	BB
** FACILITY IMPROVEMENTS: BONDS/STATE MODERNIZATON/NEW CONSTRUCTION/DEVELOPER FEES				51,936.45	



TO: BOARD OF EDUCATION

ACTION/CONSENT

12/15/11

FROM: SANDRA LYON / JANECE L. MAEZ / PAT HO

RE: ACCEPTANCE OF GIFTS – 2011/2012

RECOMMENDATION NO. A.08

It is recommended that the Board of Education accept, with gratitude, checks and gifts totaling \$44,114.93 presented to the Santa Monica-Malibu Unified School District.

It is further recommended that the Fiscal/Business Services Office, in accordance with Educational Code §42602, be authorized to increase the 2011-2012 income and appropriations by \$44,114.93 as described on the attached listing.

This report details only gifts of cash or non-cash items. It includes all contributions made by individuals or companies and some of the contributions made by our PTA's. Contributions made by a PTA in the form of a commitment and then billed are reported in a different resource. A final report that compiles all gift, PTA and Equity Fund contributions is prepared and available annually.

COMMENT: The value of all non-cash gifts has been determined by the donors.

NOTE: The list of gifts is available on the District's website, [www.smmusd.org](http://www.smmusd.org).

MOTION MADE BY:

SECONDED BY:

STUDENT ADVISORY VOTE:

AYES:

NOES:

Current Gifts and Donations 2011/2012

School/Site Account Number		Equity Fund 15% Contrib.	In-kind Value	Donor	Purpose
<b>JAMS</b> 01-90120-0-00000-00000-8699-011-0000	\$ 1,117.50 \$ 140.00 \$ 95.03	\$ - \$ - \$ 16.77		Santa Monica-Malibu Ed Foundation Various Planet Aid, Inc.	General Supplies and Materials General Supplies and Materials General Supplies and Materials
<b>Adult Education</b> 11-90120-0-00000-00000-8699-090-0000					
<b>Alternative (SMASH)</b> 01-90120-0-00000-00000-8699-009-0000					
<b>Cabrillo</b> 01-90120-0-00000-00000-8699-017-0000	\$ 982.00 \$ 580.00	\$ - \$ -		Barry and Nina Yates Barry and Nina Yates	Field Trip Field Trip
<b>CDS</b> 12-90120-0-00000-00000-8699-070-0000					
<b>Edison</b> 01-90120-0-00000-00000-8699-001-0000					
<b>Franklin</b> 01-90120-0-00000-00000-8699-002-0000					
<b>Grant</b> 01-90120-0-00000-00000-8699-003-0000					
<b>Lincoln</b> 01-90120-0-00000-00000-8699-012-0000	\$ 1,656.00 \$ 92.74	\$ - \$ 16.36		Various Parents Planet Aid, Inc.	General Supplies and Materials General Supplies and Materials
<b>Malibu High School</b> 01-90120-0-00000-00000-8699-010-0000	\$ 812.00 \$ 600.00 \$ 200.00 \$ 160.00 \$ 89.68	\$ - \$ - \$ - \$ - \$ 15.82		Keys Studios, Inc. Malibu Special Ed Foundation Malibu High School PTSA Various Students Planet Aid, Inc.	General Supplies and Materials General Supplies and Materials General Supplies and Materials General Supplies and Materials General Supplies and Materials
<b>McKinley</b> 01-90120-0-00000-00000-8699-004-0000	\$ 5,602.00	\$ -		Various	Field Trip
<b>Muir</b> 01-90120-0-00000-00000-8699-005-0000	\$ 1,060.81	\$ -		Wells Fargo Matching Gift Fund	Field Trip
<b>Olympic HS</b> 01-90120-0-00000-00000-8699-014-0000					
<b>Rogers</b> 01-90120-0-00000-00000-8699-006-0000	\$ 764.00 \$ 150.00	\$ - \$ -		Various Parents Young Champions Recreation Programs	Field Trip General Supplies and Materials
<b>Roosevelt</b> 01-90120-0-00000-00000-8699-007-0000	\$ 540.00	\$ -		Jennifer Goldman	Direct Cost

Current Gifts and Donations 2011/2012

School/Site Account Number	Gift Amount	Equity Fund 15% Contrib.	In-kind Value	Donor	Purpose
<b>Samohi</b> 01-90120-0-00000-00000-8699-015-0000	\$ 7,148.00 \$ 6,354.21 \$ 752.00	\$ - \$ 1,121.33 \$ -	\$ 10,000.00	Revolution Prep, LLC. SM-Arts Parents Association Samohi Band Various Brett Conrad	General Supplies and Materials Teacher, Hourly General Supplies and Materials 2007 Zenn Electric Car
<b>Barnum Hall</b> 01-91150-0-00000-00000-8699-000-0000					
<b>Pt. Dume Marine Science</b> 01-90120-0-00000-00000-8699-019-0000					
<b>Webster</b> 01-90120-0-00000-00000-8699-008-0000					
<b>Others:</b>					
<b>Superintendent's Office</b> 01-90120-0-00000-00000-8699-020-0000					
<b>Educational Services</b> 01-90120-0-00000-00000-8699-030-0000	\$ 1,546.05 \$ 890.00 \$ 445.00 \$ 345.00 \$ 157.73	\$ - \$ - \$ - \$ - \$ -		Boys and Girls Club of Santa Monica Various Music Parents Various Music Parents Various Music Parents Kenneth Downing	General Supplies and Materials General Supplies and Materials General Supplies and Materials General Supplies and Materials General Supplies and Materials
<b>Student &amp; Family Services</b> 01-90120-0-00000-00000-8699-040-0000					
<b>Special Education</b> 01-90120-0-00000-00000-8699-044-0000					
<b>Information Services</b> 01-90120-0-00000-0000-8699-054-0000					
<b>Food and Nutrition Services</b> 01-90120-0-00000-0000-8699-057-0000			\$ 379.90	Mia Goldman	Two Compost Bins for Samohi/Rosevelt
<b>District</b> 01-90120-0-00000-00000-8699-090-0000					
<b>TOTAL</b>	<b>\$ 32,279.75</b>	<b>\$ 1,170.28</b>	<b>\$ 10,379.90</b>		

BOE Date: 12/15/11

Current Gifts and Donations 2011/2012

School/Site Account Number	Y-T-D Adjusted Gift Total	Current Gift Amount	Equity Fund 15% Contrib.	Cumulative Gift Amount	Y-T-D In-Kind Value	Current In-Kind Value	Cumulative In-Kind Value
<b>JAMS</b> 01-90120-0-00000-00000-8699-011-0000	\$ 13,403.11	\$ 1,352.53	\$ 16.77	\$ 14,772.41			\$ -
<b>Adult Education</b> 11-90120-0-00000-00000-8699-090-0000				\$ -			\$ -
<b>Alternative (SMASH)</b> 01-90120-0-00000-00000-8699-009-0000				\$ -			\$ -
<b>Cabrillo</b> 01-90120-0-00000-00000-8699-017-0000	\$ 5,559.01	\$ 1,847.00	\$ -	\$ 7,406.01			\$ -
<b>CDS</b> 12-90120-0-00000-00000-8699-070-0000				\$ -			\$ -
<b>Edison</b> 01-90120-0-00000-00000-8699-001-0000	\$ 820.36			\$ 820.36			\$ -
<b>Franklin</b> 01-90120-0-00000-00000-8699-002-0000	\$ 405.49			\$ 405.49			\$ -
<b>Grant</b> 01-90120-0-00000-00000-8699-003-0000				\$ -			\$ -
<b>Lincoln</b> 01-90120-0-00000-00000-8699-012-0000	\$ 468.13	\$ 1,748.74	\$ 16.36	\$ 2,233.23			\$ -
<b>Malibu High School</b> 01-90120-0-00000-00000-8699-010-0000 <i>Malibu Shark Fund - Resource #90141</i>	\$ 20,701.19	\$ 1,861.68	\$ 15.82	\$ 22,578.69			\$ -
<b>McKinley</b> 01-90120-0-00000-00000-8699-004-0000	\$ 4,433.13	\$ 5,602.00	\$ -	\$ 10,035.13			\$ -
<b>Muir</b> 01-90120-0-00000-00000-8699-005-0000	\$ 127.12	\$ 1,060.81	\$ -	\$ 1,187.93			\$ -
<b>Olympic HS</b> 01-90120-0-00000-00000-8699-014-0000	\$ 6,250.00			\$ 6,250.00			\$ -
<b>Rogers</b> 01-90120-0-00000-00000-8699-006-0000	\$ 679.56	\$ 914.00	\$ -	\$ 1,593.56			\$ -
<b>Roosevelt</b> 01-90120-0-00000-00000-8699-007-0000	\$ 3,301.00	\$ 540.00	\$ -	\$ 3,841.00			\$ -
<b>Samohi</b> 01-90120-0-00000-00000-8699-015-0000	\$ 1,795.19	\$ 14,254.21	\$ 1,121.33	\$ 17,170.73	\$ 1,185.69	\$ 10,000.00	\$ 11,185.69
<b>Barnum Hall</b> 01-91150-0-00000-00000-8699-000-0000	\$ 100,000.00			\$ 100,000.00			
<b>Pt. Dume Marine Science</b> 01-90120-0-00000-00000-8699-019-0000				\$ -			\$ -

BOE Date: 12/15/11

Current Gifts and Donations 2011/2012

School/Site Account Number	Y-T-D Adjusted Gift Total	Current Gift Amount	Equity Fund 15% Contrib.	Cumulative Gift Amount	Y-T-D In-Kind Value	Current In-Kind Value	Cumulative In-Kind Value
<b>ALL OTHER LOCATIONS:</b>							
<b>Webster</b> 01-90120-0-00000-00000-8699-008-0000	\$ 5,000.00			\$ 5,000.00			\$ -
<b>Superintendent's Office</b> 01-90120-0-00000-00000-8699-020-0000							
<b>Educational Services</b> 01-90120-0-00000-00000-8699-030-0000	\$ 12,006.23	\$ 3,383.78		\$ 15,390.01	\$ 2,350.00		\$ 2,350.00
<b>Student and Family Support Services</b> 01-90120-0-00000-00000-8699-041-0000				\$ -			\$ -
<b>Special Education</b> 01-90120-0-00000-00000-8699-044-0000				\$ -			\$ -
<b>Information Services</b> 01-90120-0-00000-00000-8699-054-0000				\$ -			\$ -
<b>District</b> 01-90120-00000-0-00000-8699-090-0000				\$ -			\$ -
<b>Food &amp; Nutrition Services</b> 01-90120-0-00000-00000-8699-070-0000				\$ -		\$ 379.90	\$ 379.90
<b>TOTAL GIFTS</b>	<b>\$ 174,949.52</b>	<b>\$ 32,564.75</b>	<b>\$ 1,170.28</b>	<b>\$ 208,684.55</b>	<b>\$ 3,535.69</b>	<b>\$ 10,379.90</b>	<b>\$ 13,915.59</b>
<b>Total Cash Gifts for District:</b>		<b>\$ 32,564.75</b>	<b>Total Equity Fund 15% Contribs. \$ 1,170.28</b>		<b>Total In-Kind Gifts:</b>	<b>\$ 10,379.90</b>	



TO: BOARD OF EDUCATION

ACTION/CONSENT

12/15/11

FROM: SANDRA LYON / JANECE L. MAEZ / VIRGINIA I. HYATT

RE: APPROVAL FOR DISPOSAL/RECYCLE OF SURPLUS EQUIPMENT

RECOMMENDATION NO. A.09

It is recommended that the Board of Education approve the disposal, sale, recycling or donation of the surplus equipment and furniture listed below.

COMMENT: All items are obsolete, beyond economic repair, unusable or deemed as surplus. Items will be disposed of in accordance with Educational Code 17545-1755.

School/ Dept	Item	Qty	Serial #	Acquired	Asset #
Ed Services	Hewlett Packard 960c Printer	1	MY11L1S1W1	06/15/2001	9716
	Fujitsu 4340C Scanner	1	601530	11/24/2003	16767
Pt. Dume	Apple iMac All-In-One Computer	6	C02FKVMLDHJF C17FK16ZDHJF C02FKH39DHJF C17FK0B6DHJF C17FH6BADHJF C02FJAU1DHJF	06/01/2011	26380 26381 26382 26383 26391 26392
Purchasing	Hewlett Packard 2800 Printer	1	TH35204X	08/20/2007	10879
Samohi	Apple PowerMac G3 Computer	1	XA826UMD2K	09/14/1998	6687
	CDI DVC-B01 Computer	1	1786	01/01/1990	119
	Elmo HP-L355QH Overhead Projector	1	387375	10/08/2003	13082
	Gateway 300L Computer	4	0028502253 0028502251 0028502252 0028502254	11/22/2002 11/22/2002 11/22/2002 11/22/2002	14098 14099 14100 14101
	Gateway E3200 Computer	1	0019474859	07/01/2000	11073
	Gateway E3400 Computer	1	0023628509	06/30/2001	9394
	Gateway E3600 Computer	2	0027212434 0027166694	06/15/2002 Unknown	12608 12615
	Gateway E4100 Computer	1	0032889504	02/04/2004	13139
	Hewlett Packard 1600CM Printer	1	SGA5704634	Unknown	549
	Hewlett Packard ScanJet Scanner	1	SG6442109M	09/17/1996	5323
	Hewlett Packard DeskJet 895CXi Printer	1	MX911V0J5	04/23/1999	7206
	Hewlett Packard LaserJet 1100 Printer	2	USBG020704 USGN111506	Unknown Unknown	11436 11281
	Intergraph GL2 Computer	1	H2TBZY	Unknown	43784
	Intergraph GL2 Computer	1	H2VHDF	Unknown	N/A
	JVC HRDVS1V VHS	1	105A0277	07/01/2000	11071
	Panasonic Television	1	MC71290731	Unknown	11074
	Panasonic CT13R31B	1	MB01050005	07/01/2000	8953
	Panasonic CT13R31B	1	MA01380445	07/01/2000	8952
	Panasonic CT1920M	1	UG2534749	01/01/1985	1314
	Panasonic AG1980 VHS	1	AOTC00533	07/01/2000	11068
	Panasonic AG1980 VHS	1	ADTc00594	07/01/2000	11069
	QMS CSL1 Printer	1	Q0115150	01/01/1994	566
	Quasar Television/VHS	1	SB31401260	Unknown	11418
	RCA Colortrak Television	1	608230739	Unknown	11208

	RCA Colortrak Television	1	146530932	01/01/1991	797
	RCA F27255BC Television	1	813464591	09/09/1998	6645
	RCA XL100 Television	1	139336149	01/01/1978	754
	Sony SLV-R1000 VCR	1	Unknown	Unknown	11065

The following vehicles will be salvaged as surplus once the replacement vehicles are received. Vehicles are beyond economic repair and exceed the District standard of a 10 year replacement cycle.

<b>Veh #</b>	<b>Make/Model</b>	<b>Year</b>	<b>SN</b>	<b>Shop</b>	<b>License</b>
042A	Ford/E150 Truck	1994	1FTJE34G7RHC07465	Operations	E360245
Asset # 96000276					

Condition:

<b>Veh #</b>	<b>Mileage</b>	<b>Interior Condition</b>	<b>Exterior Condition</b>	<b>Mechanical</b>
042A	Unknown	Poor	Poor	Poor
Asset # 96000276				

MOTION MADE BY:  
 SECONDED BY:  
 STUDENT ADVISORY VOTE:  
 AYES:  
 NOES:



TO: BOARD OF EDUCATION

ACTION/CONSENT

12/15/11

FROM: SANDRA LYON / JANECE L. MAEZ / VIRGINIA I. HYATT

RE: AWARD OF BID #12.05 REGENERATIVE POOL FILTER TO NEPTUNE  
BENSON – MALIBU MIDDLE/HIGH SCHOOL

RECOMMENDATION NO. A.10

It is recommended that the Board of Education award Bid #12.05, Regenerative Pool Filter to Neptune Benson in an amount not to exceed \$119,746.80

Funding Information

Budgeted: Yes

Fund: General

Source: Unrestricted

Account Number: 01-00000-0-00000-82000-6500-061-2602

COMMENTS: Currently, Malibu High School's pool filter and backwash system is in need of a redesign due to current Local Coastal Commission (LCP), Regional Water Board (RWB) and Storm Water Runoff regulations. The District is currently paying for weekly off-site hauling of backwash water until resolution on the disbursement of the water is resolved. Due to septic restrictions of the LCP and RWB, backwash cannot be put into the existing septic systems. District staff has been working with various consultants, RWB and LCP officials to work out a solution to the existing problem. After discussing, reviewing and pricing numerous solutions, it has been determined that the Defender regenerative pool filter is the best solution for the district both for short and long term. The purchase of the Defender filter is the first step in the process. Jones and Madhaven has been hired to design and engineer the installation of the filter and underground storage tank. Once bid documents are completed, the installation will be bid, an underground storage tank ordered and installation scheduled for June 2012. The filter fabrication will take approximately 9 weeks.

MOTION MADE BY:

SECONDED BY:

STUDENT ADVISORY VOTE:

AYES:

NOES:



TO: BOARD OF EDUCATION

ACTION/CONSENT

12/15/11

FROM: SANDRA LYON / JANECE L. MAEZ / STUART SAM

RE: CONTRACT AMENDMENT #23 FOR ADDITIONAL TESTING AND SPECIAL INSPECTION SERVICES – JOHN ADAMS MIDDLE SCHOOL NEW CONSTRUCTION AND MODERNIZATION PROJECT – LEIGHTON CONSULTING, INC. – MEASURE BB

RECOMMENDATION NO. A.11

It is recommended that the Board of Education approve Contract Amendment #23 to Leighton Consulting, Inc. for additional Testing and Special Inspection Services for John Adams Middle School New Construction and Modernization Project in the amount of \$13,742, for a total contract amount of \$367,008, Measure BB projects.

Funding Information

Budgeted: Yes  
Fund: 82  
Source: State Building Fund  
Account Number: 82-90500-0-00000-85000-5802-011-2600  
Project: New Construction and Modernization Project  
Budget Category: Tests & Inspections, Materials Lab

COMMENTS: On April 6, 2011, the Board approved CA #17 for Leighton Consulting, Inc. to provide special testing and special testing services required by DSA for the project. That contract amendment included estimated costs for in-plant inspection of steel fabrication in southern California. Since contract amendment #17 was approved, the project has bid, and the contractor has contracted with a steel fabricator in Tremonton, Utah and received a fabrication schedule from the fabricator. The in-plant steel fabrication will require an additional 120 hours of inspection time and some additional management and administrative costs not included in Contract Amendment #17.

Division of the State Architect (DSA) Testing and Special Inspection Services are required by code to ensure that school facilities are built to the DSA approved plans and specifications. Contract amendment #23 includes the costs for the additional inspection hours and administrative costs for the in-plant steel inspection in Tremonton Utah.

This Contract Amendment No. 23 for \$13,742 is for Testing and Special Inspection Services for John Adams Middle School New Construction and Modernization Project, DSA Application No. 03-112808, with a construction budget of \$10,062,666. The revised contract total will be \$367,008. There are adequate funds in the materials and testing budget for the additional expenditure.

*(Continued on next page)*

CONTRACT AMENDMENT #1 (Edison)	\$ 19,000
CONTRACT AMENDMENT #2 (Edison)	5,000
CONTRACT AMENDMENT #3 (Edison)	7,000
CONTRACT AMENDMENT #4 (Edison)	5,000
CONTRACT AMENDMENT #5 (Malibu)	50,500
CONTRACT AMENDMENT #6 (Malibu)	3,000
CONTRACT AMENDMENT #7 (Webster)	9,400
CONTRACT AMENDMENT #8 (Malibu)	12,400
CONTRACT AMENDMENT #9 (Olympic)	21,600
CONTRACT AMENDMENT #10 (Olympic)	3,000
CONTRACT AMENDMENT #11 (Olympic)	1,300
CONTRACT AMENDMENT #12 (Rogers)	1,500
CONTRACT AMENDMENT #13 (JAMS Pkg. lot)	4,500
CONTRACT AMENDMENT #14 (Grant Main Entry)	5,010
CONTRACT AMENDMENT #15 (JAMS Parking Lot)	10,700
CONTRACT AMENDMENT #16 (JAMS Parking Lot)	5,000
CONTRACT AMENDMENT #17 (JAMS)	61,656
CONTRACT AMENDMENT #18 (Malibu HS EIR)	3,000
CONTRACT AMENDMENT #19 (Edison soil testing)	101,500
CONTRACT AMENDMENT #20 (Samohi CCJUP Synthetic field)	<del>13,200</del>
CONTRACT AMENDMENT #21 (Contract Extension)	\$0
CONTRACT AMENDMENT #22 (Malibu HS)	\$10,000
CONTRACT AMENDMENT #23 (JAMS)	<u>\$13,742</u>
TOTAL:	\$353,808

\*Moved to separate CCJUP Board Item as CA#1

MOTION MADE BY:  
 SECONDED BY:  
 STUDENT ADVISORY VOTE:  
 AYES:  
 NOES:

TO: BOARD OF EDUCATION

ACTION/CONSENT

12/15/11

FROM: SANDRA LYON / JANECE L. MAEZ / STUART SAM

RE: AMENDMENT TO CONTRACT FOR BID #10.33.BB-03-113031 – LINCOLN MIDDLE SCHOOL – MODERNIZATION OF BUILDING E (PACKAGE 1B) PROJECT – MEASURE BB

RECOMMENDATION NO. A.12

It is recommended that the Board of Education approve Change Order #5 for Bid #10.33.BB-03-113031 – Lincoln Middle School – Modernization of Building E (Package 1B), to Icon West, Inc. in the amount of \$115,228.47 for a total contract amount of \$2,145,256.74.

Funding Information:

Budgeted:	Yes
Fund:	82
Source:	Building Fund
Account Numbers:	82-90500-0-00000-85000-6200-012-2600
Description:	Construction Services
DSA #:	03-113031
Description:	Building Improvement

COMMENTS: At the April 6, 2011, Board of Education meeting, Bid #10.33.BB-03-113031 – Lincoln Middle School – Modernization of Building E (Package 1B), was approved to Icon West, Inc., in the amount of \$1,775,000.

At the August 24, 2011, Board of Education meeting, Change Order 1 was approved in the amount \$30,098.08.

At the October 6, 2011, Board of Education meeting, Change Order 2 was approved in the amount \$77,475.98

At the November 17, 2011, Board of Education meeting, Change Orders 3 and 4 was approved in the amounts of \$77,475.98 and \$69,840.31.

Change Order No. 5 includes the following changes to the terms of the contract:

Original Contract Amount:	\$1,775,000.00
Change Order No. 1:	\$30,098.08
Change Order No. 2:	\$77,613.90
Change Order No. 3	\$77,475.98
Change Order No. 4:	\$69,840.31
<u>Change Order No. 5:</u>	<u>\$115,228.47</u>
Total Contract Amount:	\$2,145,256.74

Original Contract Duration	210 days
Change Order No. 1:	+0 days
Change Order No. 2:	+0 days
Change Order No. 3 (non-compensable days)	+20 days
Change Order No. 4 (non-compensable days)	+17 days
<u>Change Order No. 5 (non-compensable days)</u>	<u>+5 days</u>
Total Contract Duration:	252 days

Change Order 5 includes the cost for all labor and materials for additional scope required to complete the project and required to obtain Fire, Life & Safety approval.

1. Modify front parking lot- \$12,004.39
2. Add additional seismic fitting for fire sprinklers- \$14,026.06
3. Enlarge furnace platforms & enclosures- \$3,425.24
4. Modify light fixtures classroom 210- \$4,606.83
5. Provide additional power receptacles at cabinets- \$16,144.63
6. Provide additional fire sprinklers and access panels - \$36,640.46
7. Add HVAC PVC wrap- \$919.74
8. Provide power for roof maintenance receptacles - \$10,495.98
9. Move existing doors on corridor wall- \$1,813.06
10. Add shims to install grout at windows- \$2,890.21
11. Add new molding around skylights windows - \$2,716.67
12. Provide access doors at FAU closets- \$2,300.12
13. Provide power receptacles for condensate pumps-\$5,989.29
14. Provide additional caulking around window flashing-\$1,255.79

This Change Order #5, for a total add of \$115,228.47 is for change orders listed above and a 5 day, non-compensable contract extension on the Lincoln Middle School – Modernization of Building E (Package 1B). The revised contract total will be \$2,145,256.74. The revised contract duration is 252 days.

Funding for the Change Order 5 will be drawn upon the construction contingency. No site budget increase.

A Friday memorandum will accompany this item.

MOTION MADE BY:  
SECONDED BY:  
STUDENT ADVISORY VOTE:  
AYES:  
NOES:

TO: BOARD OF EDUCATION

ACTION/CONSENT

12/15/11

FROM: SANDRA LYON / JANECE L. MAEZ / STUART SAM

RE: APPROVAL OF MEASURE BB CONSTRUCTION BUDGET INCREASE –  
OLYMPIC HIGH SCHOOL – MEASURE BB

RECOMMENDATION NO. A.13

It is recommended that the Board of Education approve an increase to the Olympic budget by \$702,500. Of the \$702,500, \$450,000 would be allocated to increase the construction budget, and the remaining \$252,500 would be allocated to associated other costs related to the increased construction costs. The current construction Budget is \$5,011,000, the revised construction budget would be \$5,461,000. The current unallocated program reserve is \$10,175,778. The revised program reserve would be \$9,473,278.

Funding Information

Budgeted: Yes  
Fund: 21  
Source: State Building Fund  
Account Number: 21-90500-0-00000-85000-6200-014-2600  
Project: Modernization Project  
Budget Category: Construction

COMMENTS: An increase of \$702,500 in the project budget for the Olympic High School Modernization Project is needed to accommodate the installation of seismic bracing of the building, and associated finish repairs, that were not part of the original project scope and budget in the amount of \$450,000. The remaining \$252,500 budget increase will accommodate the additional costs for professional management, design, inspection, testing laboratory, and additional contingency budget.

It is proposed that these funds be reallocated from available program reserves. The program reserves were established for contingencies including unforeseen project scope increases.

The proposed budget increase was presented to the Measure BB Advisory Committee on 12/12/2011 at which time they voted to recommend Board approval of this increase.

A Friday Memo accompanies this item.

MOTION MADE BY:

SECONDED BY:

STUDENT ADVISORY VOTE:

AYES:

NOES:





TO: BOARD OF EDUCATION

ACTION/CONSENT

12/15/11

FROM: SANDRA LYON / JANECE L. MAEZ / STUART SAM

RE: CONTRACT AMENDMENT #39 FOR SITE SURVEY SERVICES – NEW EDISON LANGUAGE ACADEMY PROJECT – PSOMAS – MEASURE BB

RECOMMENDATION NO. A.14

It is recommended that the Board of Education award PSOMAS Contract Amendment #39 for surveying and entitlement services for easement of new drop off at Edison Language Academy Project, in the amount of \$5,000 for a total contract amount of \$1,188,410.

Funding Information

Budgeted: Yes  
Fund: 81  
Source: State School Building Fund  
Account Number: 81-90500-0-00000-85000-5802-001-2600  
Project: New Edison Language Academy Project  
Budget Category: Surveys/Investigation, Survey/Utility Mapping

COMMENTS: As part of the off-site improvements scope for the New Edison Language Academy, the District has to provide an easement to the City of Santa Monica for the new drop-off area. This area includes a curb inset that will allow parents to drop-off the students safely on the new Virginia Avenue entry.

To this effect, the District requires services of a professional surveyor. The scope includes the following: Preparing a single legal description and exhibit for the drop off lane and record the easement with the City of Santa Monica. This Contract Amendment #39, for \$5,000 is for these required entitlement services. The total contract amount will be \$1,188,410.

There is available budget in the project soft costs for this expense.

ORIGINAL CONTRACT AMOUNT:	\$ 249,450
Contract Amendment#1 (Survey, 4 Sites)	92,200
Contract Amendment#2 (Samohi Utilities Map)	39,600
Contract Amendment#3 ( Survey, 2 Sites)	38,000
Contract Amendment#4 (Survey, 4 Sites)	63,000
Contract Amendment#5 (Survey, 4 Sites)	99,900
Contract Amendment#6 (Survey/Utilities Mapping, 4 Sites)	84,500
Contract Amendment#7 (Survey, 5 Sites)	72,600
Contract Amendment #8 (MMHS, Sewer, Easement)	63,500
Contract Amendment #9 (Samohi, Olympic)	99,000
Contract Amendment #10 (Samohi survey)	7,500
Contract Amendment #11 (Lincoln survey)	15,000
Contract Amendment #12 (MMHS survey)	5,500
Contract Amendment #13 (Webster survey)	22,500
Contract Amendment #14 (MMHS survey)	7,500
Contract Amendment #15 (MMHS slope analysis)	1,800
Contract Amendment #16 (JAMS design survey)	8,379
Contract Amendment #17 (MMHS design survey)	29,246
Contract Amendment #18 (PDES survey)	23,574
Contract Amendment #19 (Samohi)	24,232
Contract Amendment #20 (MMHS)	6,795

Contract Amendment #21 (Webster)	22,081
Contract Amendment #22 (MMHS)	2,560
Contract Amendment #23 (Samohi)	17,048
Contract Amendment #24 (JAMS confirmation survey)	2,500
Contract Amendment #25 (JAMS underground sewer survey)	21,556
Contract Amendment #26 (ELA design survey)	10,848
Contract Amendment #27 (JAMS revised survey)	1,496
Contract Amendment #28 (Rogers Survey for Relos)	11,646
Contract Amendment #29 (Rogers Utility Detection for Relos)	<del>15,556</del> 13,056
Contract Amendment #30 (JAMS Underground utilities)	2,170
Contract Amendment #31 (JAMS utility investigation - rels)	6,296
Contract Amendment #32 (JAMS subsurface investigation)	4,198
Contract Amendment #33 (Contract extension)	0
Contract Amendment #34 (Olympic subsurface investigation)	7,050
Contract Amendment #35 (Grant survey update)	600
Contract Amendment #36 (Webster survey update)	2,003
Contract Amendment #37 (Contract extension)	0
Contract Amendment #38 (Malibu survey update)	4,526
Contract Amendment #39 (Edison Easement)	5,000
<b>TOTAL CONTRACT AMOUNT</b>	<b>\$1,188,410</b>

MOTION MADE BY:  
SECONDED BY:  
STUDENT ADVISORY VOTE:  
AYES:  
NOES:

TO: BOARD OF EDUCATION

ACTION/CONSENT

12/15/11

FROM: SANDRA LYON / JANECE L. MAEZ / STUART A. SAM

RE: APPROVAL OF DEVELOPER-CONTRACTOR – SANTA MONICA HIGH SCHOOL – SCIENCE & TECHNOLOGY BUILDING AND SITE IMPROVEMENTS PROJECT – LEASE LEASEBACK RFP – MEASURE BB

RECOMMENDATION NO. A.15

It is recommended that the Board of Education approve the three (3) firms listed below as pre-qualified Developer-Contractors for the Santa Monica High School – Science & Technology Building and Site Improvements Project in a not-to-exceed amount of \$55 million previously approved by the Board of Education.

Funding Information

Budgeted: Yes  
Fund: 81  
Source: Building Fund  
Account Number: 82-90500-0-00000-85000-6200-015-2600  
Description: Construction Services  
DSA #: 03-113443  
Friday Memo: 12/09/2011

COMMENTS: The Request for Proposals (RFP) was sent to five (5) short-listed Developer-Contractors on October 20, 2011. A total of five (5) Developer-Contractors attended the mandatory job walk held on October 26, 2011. Five (5) Developer-Contractors submitted proposals on November 17, 2011. Based on review and evaluation of the issued RFP and proposals received, the following three (3) Developer-Contractors were short-listed for interviews which were conducted on December 8, 2011. All proposals met the not to exceed amount approved by the Board.

Sundt  
Turner  
McCarthy

District panel evaluated the proposals received and interviews were conducted with the contractors listed above to select and rank the Developer-Contractor(s) providing best value on the project.

To ensure that the project schedule is not impacted considerably and construction start makes the best use of the Winter Break schedule, we are recommending the Board pre-approve the Developer-Contractors listed above.

A BOE item will be presented at the January 19, 2012, meeting ratifying the contract award to the Developer-Contractor providing best value on the project.

A Friday memorandum accompanies this Board Item.

MOTION MADE BY:

SECONDED BY:

STUDENT ADVISORY VOTE:

AYES:

NOES:



TO: BOARD OF EDUCATION

ACTION/CONSENT

12/15/11

FROM: SANDRA LYON / JANECE L. MAEZ / STUART A. SAM

RE: AWARD OF CONTRACT FOR TESTING AND SPECIAL INSPECTION SERVICES – SANTA MONICA HIGH SCHOOL – SCIENCE & TECHNOLOGY BUILDING AND SITE IMPROVEMENTS PROJECT – MEASURE BB

RECOMMENDATION NO. A.16

It is recommended that the Board of Education award Testing & Special Inspection Services to California Testing & Inspections, Inc. at Santa Monica High School for the Science & Technology Building Project, in the amount of \$480,922.

Funding Information

Budgeted: Yes  
Fund: 82  
Source: State School Building Fund  
Account Number: 82-90500-0-00000-85000-5802-015-2600  
Description: Independent Contractor/Consultant

Comments: Division of the State Architect (DSA) Inspection Services are required by code to ensure that school facilities are built to the DSA approved plans and specifications. District staff solicited proposals from the seven (7) prequalified Testing & Special Inspection firms. A review panel was formed to determine the best value. California Testing & Inspections, Inc. is recommended to provide Inspection Services for the Santa Monica High School - Science & Technology Building Project. DSA Application No. 03-113443.

This award of Contract, for \$480,922, is for Testing & Special Inspection Services for the Santa Monica High School / Science & Technology Building Project, with a construction value of approximately \$55 million. This cost for testing and inspections was anticipated in the budget.

MOTION MADE BY:

SECONDED BY:

STUDENT ADVISORY VOTE:

AYES:

NOES:



TO: BOARD OF EDUCATION

ACTION/CONSENT

12/15/2011

FROM: SANDRA LYON / JANECE L. MAEZ / STUART A. SAM

RE: AWARD OF CONTRACT FOR INSPECTION SERVICES FOR SANTA MONICA HIGH SCHOOL – SCIENCE & TECHNOLOGY BUILDING AND SITE IMPROVEMENTS PROJECT – MEASURE BB

RECOMMENDATION NO. A.17

It is recommended that the Board of Education award Inspection Services to Sandy Pringle Associates at Santa Monica High School, for the Science & Technology Building and Site Improvements Project, in the amount of \$462,500.

Funding Information

Budgeted: Yes  
Fund: 82  
Source: State School Building Fund  
Account Number: 82-90500-0-00000-85000-5802-015-2600  
Description: Independent Contractor/Consultant

Comments: Division of the State Architect (DSA) Inspection Services are required by code to ensure that school facilities are built to the DSA approved plans and specifications. District staff solicited proposals from seventeen (17) pre-qualified Inspector-of-Record (IOR) firms. A review panel was formed and determined Sandy Pringle Associates as the best value. Sandy Pringle Associates is recommended to provide Inspection Services for the Santa Monica High School - Science & Technology Building Project, DSA Application No. 03-113443.

This award of Contract for the amount of \$462,500, is for Inspection Services for the Santa Monica High School / Science & Technology Building Project, with a construction value of approximately \$55 million. This cost for inspection services was anticipated in the budget.

MOTION MADE BY:

SECONDED BY:

STUDENT ADVISORY VOTE:

AYES:

NOES:





TO: BOARD OF EDUCATION

ACTION/CONSENT

12/15/11

FROM: SANDRA LYON / JANECE L. MAEZ / STUART A. SAM

RE: CONTRACT AMENDMENT # 2 FOR TESTING AND SPECIAL INSPECTION SERVICES DURING CONSTRUCTION – SANTA MONICA HIGH SCHOOL – CIVIC CENTER JOINT USE PROJECT (CCJUP) REPLACEMENT OF EXISTING GRASS FOOTBALL FIELD WITH SYNTHETIC TURF PROJECT – LEIGHTON CONSULTING, INC. – MEASURE BB

RECOMMENDATION NO. A.18

It is recommended that the Board of Education approve Contract Amendment #2 to Leighton Consulting, Inc. for testing and special inspection services for the Santa Monica High School CCJUP - Replacement of Existing Grass Football Field with Synthetic Turf Project in the amount of \$8,730, for a total contract amount of \$62,230.

Funding Information

Budgeted: Yes  
Fund: 40  
Source: State School Building Fund  
Account Number 20-90500-0-00000-85000-5802-015-2600  
Description: Independent Contractor/Consultant

COMMENTS: On January 13, 2011 the Board of Education approved a contract with Leighton Consulting, Inc. in the amount of \$40,300, Inc. to provide Geotechnical Investigation and Reporting Services in support of the preparation of the Environmental Impact Report (EIR) for the Civic Center Joint Use Project (CCJUP) work at Santa Monica High School.

Contract Amendment #1 was to provide Division of State Architect (DSA) Testing and Special Inspection Services for the Santa Monica High School Replacement of Existing Grass Football Field with Synthetic Turf Project, as required by code to ensure that school facilities are built to the DSA approved plans and specifications. Contract Amendment #1 was originally approved by the Board of Education as Contract Amendment #20 for Leighton’s Measure BB contract.

This Contract Amendment #2 is for additional Testing and Inspection Services for the Santa Monica High School Replacement of Existing Grass Football Field with Synthetic Turf Project in the amount of \$8,730. The revised contract total will be \$62,230.

ORIGINAL CONTRACT AMOUNT	\$40,300
CONTRACT AMENDMENT #1 (Samohi CCJUP Synthetic Field)	13,200
CONTRACT AMENDMENT #2 (Samohi CCJUP Synthetic Field)	8,730
<b>TOTAL:</b>	<b>\$62,230</b>

MOTION MADE BY:  
SECONDED BY:  
STUDENT ADVISORY VOTE:  
AYES:  
NOES:



TO: BOARD OF EDUCATION

ACTION/CONSENT

12/15/11

FROM: SANDRA LYON / JANECE L. MAEZ / STUART SAM

RE: CONTRACT AMENDMENT #30 FOR ADDITIONAL ARCHITECTURAL SERVICES FOR MALIBU HIGH SCHOOL, CAMPUS IMPROVEMENT PROJECT – HMC ARCHITECTS – MEASURE BB

RECOMMENDATION NO. A.19

It is recommended that the Board of Education approve Contract Amendment No. 30 to HMC Architects, to provide additional architectural and engineering services. They will prepare a combined photometric study showing the cumulative effects of the of the Malibu HS proposed parking lot lights and potential football field lighting. Contract Amendment No. 30 is in the amount of \$4,500. The revised total contract amount will be \$6,498,487.

Funding Information

Budgeted: Yes  
Fund: 21  
Source: Building Fund  
Account Number: 81-90500-0-00000-85000-5802-010-2600  
Budget Category: Design Services, Architects

COMMENTS: Under this amendment, HMC and their electrical engineer will prepare an additional lighting study needed by the CEQA consultant, ATKINS, to complete the Draft EIR comment responses. This study will show the combined light levels generated by the proposed new parking lot lights, and proposed football field lighting. Previous lighting studies for the campus improvement project and the proposed football field lighting analyzed those lights separately and did not show the combined light sources.

This additional study is needed to respond to specific public Draft EIR comments asking that the cumulative impacts of the proposed campus improvement project and the football field lighting be analyzed. The proposed football field lighting is a new condition as a result of the recent amendment to the City of Malibu LCP allowing field lighting. Before the LCP amendment was approved in October, field lighting was not allowed and the cumulative impact did not need to be considered.

There is adequate soft cost budget for this expenditure.

ORIGINAL CONTRACT AMOUNT (Programming/Schematic Design)	\$ 961,327
CONTRACT AMENDMENT #1 (Cabrillo SDC-IS)	87,995
CONTRACT AMENDMENT #2 (FF&E Standards)	92,400
CONTRACT AMENDMENT #3 (DD/CD/CA Malibu Project)	3,562,894
CONTRACT AMENDMENT #4 (Pt. Dume/Webster Safety)	157,588
CONTRACT AMENDMENT #5 (Malibu Project Public Meetings/EIR)	25,144
CONTRACT AMENDMENT #6 (Cabrillo Safety Project)	10,304
CONTRACT AMENDMENT #7 (Webster Parking Safety Project)	62,344
CONTRACT AMENDMENT #8 (Cabrillo Septic Study)	21,647
CONTRACT AMENDMENT #9 (Malibu right turn lane study)	68,256
CONTRACT AMENDMENT #10 (Malibu fire protection)	25,991
CONTRACT AMENDMENT #11 (Malibu field renderings)	8,046
CONTRACT AMENDMENT #12 (Malibu wastewater study)	62,037

CONTRACT AMENDMENT #13 (Malibu electrical)	34,428
CONTRACT AMENDMENT #14 (Malibu EIR, Traffic, Parking)	372,321
CONTRACT AMENDMENT #15 (Webster fire alarm)	9,090
CONTRACT AMENDMENT #16 (Malibu, Additional Scope)	228,405
CONTRACT AMENDMENT #17 (Malibu, Parking Lot "A")	57,340
CONTRACT AMENDMENT #18 (Cabrillo, Additional scope)	9,690
CONTRACT AMENDMENT #19 (OWTS, Webster)	57,330
CONTRACT AMENDMENT #20 (OWTS, Pt. Dume)	57,330
CONTRACT AMENDMENT #21 (Malibu HS, OWTS Construction Documents & CA)	245,375
CONTRACT AMENDMENT #22 (Structural investigation and design, Point Dume ES)	19,840
CONTRACT AMENDMENT #23 (CDP Exemption and Waivers, Malibu HS)	12,520
CONTRACT AMENDMENT #24 (DSA submittal for Access Review, Cabrillo ES Fencing)	3,700
CONTRACT AMENDMENT #25 (Separate Malibu FA into separate DSA & Bid Package)	69,210
CONTRACT AMENDMENT #26 (Additional Security Fencing, Gates & Erosion Control at Malibu MHS)	83,090
CONTRACT AMENDMENT #27 (Cabrillo fencing and gate revisions)	7,065
CONTRACT AMENDMENT #28 (Webster, Parking and Drop-Off)	73,280
CONTRACT AMENDMENT #29 (Malibu, Campus Improvement)	8,000
CONTRACT AMENDMENT #30 (Malibu, Campus Improvement, EIR lighting study)	4,500
<b>TOTAL CONTRACT AMOUNT:</b>	<b>\$6,498,487</b>

MOTION MADE BY:  
SECONDED BY:  
STUDENT ADVISORY VOTE:  
AYES:  
NOES:

TO: BOARD OF EDUCATION

ACTION/CONSENT

12/15/11

FROM: SANDRA LYON / JANECE L. MAEZ / STUART SAM

RE: ACCEPTANCE OF WORK COMPLETED FOR BID # 10.35.BB-03-112541 –  
POINT DUME ELEMENTARY SCHOOL-GAS & FURNACE REPLACEMENT  
PROJECT – BON AIR INC. – MEASURE BB

RECOMMENDATION NO. A.20

It is recommended that the Board of Education acceptance as completed all work contracted for Bid # 10.35.BB-03-112541-Point Dume Elementary School-Gas & Furnace Replacement Project, with Bon Air, Inc. with the final contract amount of \$411,497.42.

Funding Information:

Budgeted:	Yes
Fund:	21
Source:	State Building Fund
Account Numbers:	21-90500-0-00000-85000-6200-019-2600
Description:	Gas & Furnace Replacement

COMMENTS: The contract with Bon Air, Inc. Bid #10.38.BB Point Dume Elementary School-Gas & Furnace Replacement Project, has been completed. In order to facilitate the release of the retention being held by the District, a Notice of Completion must be filed for thirty-five (35) days with the County of Los Angeles pending approval by the Board of Education.

Substantial Completion was established as October 28, 2011.

Original Contract Amount:	\$392,000.00
Approved Change Order No.1: (10/20/11 BOE)	21,174.65
<u>Adjusted Change Order No 1:</u>	<u>(1,677.23)</u>
Total Final Contract Amount:	\$411,497.42

MOTION MADE BY:  
 SECONDED BY:  
 STUDENT ADVISORY VOTE:  
 AYES:  
 NOES:



TO: BOARD OF EDUCATION

ACTION/CONSENT

12/15/11

FROM: SANDRA LYON / JANECE L. MAEZ / STUART SAM

RE: ACCEPTANCE OF WORK COMPLETED FOR BID # 10.42.BB – MALIBU HIGH SCHOOL – SOIL REMEDIATION PROJECT – INNOVATIVE CONSTRUCTION SOLUTIONS – MEASURE BB

RECOMMENDATION NO. A.21

It is recommended that the Board of Education acceptance as completed all work contracted for Bid # 10.42.BB-Malibu High School-Soil Remediation Project, with Innovative Construction Solutions with the final reduced contract amount of \$337,757.00.

Funding Information:

Budgeted:	Yes
Fund:	21
Source:	State Building Fund
Account Numbers:	21-90500-0-00000-85000-5802-010-2600
Description:	Soil Remediation

COMMENTS: The contract with Innovative Construction Solutions Bid #10.42.BB for Malibu High School-Soil Remediation Project, has been completed. In order to facilitate the release of the retention being held by the District, a Notice of Completion must be filed for thirty-five (35) days with the County of Los Angeles pending approval by the Board of Education.

Substantial Completion was established as October 15, 2011.

Original Contract Amount:	\$360,997.00
<u>Allowance Credit:</u>	<u>- 23,240.00</u>
Total Contract Amount:	\$337,757.00

\*\*The contract was reduced as the allowances for unforeseen conditions was not fully utilized.

MOTION MADE BY:  
 SECONDED BY:  
 STUDENT ADVISORY VOTE:  
 AYES:  
 NOES:





TO: BOARD OF EDUCATION  
 FROM: SANDRA LYON / DEBRA MOORE WASHINGTON  
 RE: CERTIFICATED PERSONNEL – Elections, Separations

ACTION/CONSENT  
 12/15/11

RECOMMENDATION NO. A.22

Unless otherwise noted, all items are included in the 2011-2012 approved budget.

**ADDITIONAL ASSIGNMENTS**

ADAMS MIDDLE SCHOOL

Asher, Jeanette	12 hrs @\$40.46	10/24/11-6/7/12	Est Hrly/\$486
Jacobs, Ed	12 hrs @\$40.46	10/24/11-6/7/12	Est Hrly/\$486
Kilpatrick, Genevieve	12 hrs @\$40.46	10/24/11-6/7/12	Est Hrly/\$486
Loopesko, Lorna	12 hrs @\$40.46	10/24/11-6/7/12	Est Hrly/\$486
Murphy, Letitia	12 hrs @\$40.46	10/24/11-6/7/12	Est Hrly/\$486
Ransom, Barbara	12 hrs @\$40.46	10/24/11-6/7/12	Est Hrly/\$486
Saling, David	12 hrs @\$40.46	10/24/11-6/7/12	Est Hrly/\$486
Sever, Pamela	12 hrs @\$40.46	10/24/11-6/7/12	Est Hrly/\$486
Valentiner, Katharina	12 hrs @\$40.46	10/24/11-6/7/12	Est Hrly/\$486
TOTAL ESTABLISHED HOURLY			\$4,374

Comment: After-School Library Supervision  
 01-Reimbursed by PTA

Asher, Jeanette	40 hrs @\$40.46	11/5/11-6/16/12	Est Hrly/\$1,618
Kusion, Mary Alex	52 hrs @\$40.46	11/5/11-6/16/12	Est Hrly/\$2,104
Rajabali, Jahan	40 hrs @\$40.46	11/5/11-6/16/12	Est Hrly/\$1,618
Saling, David	40 hrs @\$40.46	11/5/11-6/16/12	Est Hrly/\$1,618
Sever, Pamela	40 hrs @\$40.46	11/5/11-6/16/12	Est Hrly/\$1,618
TOTAL ESTABLISHED HOURLY			\$8,576

Comment: Saturday School  
 01-Unrestricted Resource

Avedian, Ray	9.88 hrs @\$40.46	11/7/11-11/9/11	Est Hrly/\$400
Hart, Matt	9.88 hrs @\$40.46	11/7/11-11/9/11	Est Hrly/\$400
Post, Joel	9.88 hrs @\$40.46	11/7/11-11/9/11	Est Hrly/\$400
Rajabali, Jahan	9.88 hrs @\$40.46	11/7/11-11/9/11	Est Hrly/\$400
Sever, Pamela	9.88 hrs @\$40.46	11/7/11-11/9/11	Est Hrly/\$400
TOTAL ESTABLISHED HOURLY			\$2,000

Comment: Chaperone 6<sup>th</sup> Grade Catalina Trip  
 01-Tier III Programs Cat Flex

Asher, Jeanette	2.47 hrs @\$40.46	11/18/11	Est Hrly/\$100
TOTAL ESTABLISHED HOURLY			\$100

Comment: Chaperone School Dance  
 01-Reimbursed by ASB

**CHILD DEVELOPMENT SERVICES**

Castellon, Emma	48 hrs @\$24.94	12/21/11-1/3/12	Own Hrly/\$1,197
Jaye, Susan	48 hrs @\$31.18	12/21/11-1/3/12	Own Hrly/\$1,497
Langley, Zoe	48 hrs @\$23.63	12/21/11-1/3/12	Own Hrly/\$1,134
Mercier, Alisha	24 hrs @\$30.92	12/21/11-1/3/12	Own Hrly/\$ 742
Yadegari, Sholeh	48 hrs @\$25.78	12/21/11-1/3/12	Own Hrly/\$1,237
TOTAL OWN HOURLY			\$5,807

Comment: Winter Break Assignment – CREST  
 12-Unrestricted Resource

Cerrato, Wendy	48 hrs @\$27.69	12/21/11-1/3/12	Own Hrly/\$1,329
Chaheme, Yessenia	48 hrs @\$32.00	12/21/11-1/3/12	Own Hrly/\$1,536
Conway, Kenyatta	48 hrs @\$23.87	12/21/11-1/3/12	Own Hrly/\$1,146

Cueva, Leonardo	48 hrs @\$22.30	12/21/11-1/3/12	Own Hrly/\$1,070
Gonzalez, Yolanda	48 hrs @\$29.49	12/21/11-1/3/12	Own Hrly/\$1,416
Lockwood, Silvia	48 hrs @\$27.33	12/21/11-1/3/12	Own Hrly/\$1,312
Mercier, Alisha	24 hrs @\$30.92	12/21/11-1/3/12	Own Hrly/\$ 742
Patton, Roxie	48 hrs @\$31.18	12/21/11-1/3/12	Own Hrly/\$1,497
TOTAL OWN HOURLY			\$10,048

Comment: Winter Break Assignment – CREST  
12-CSPP

EDUCATIONAL SERVICES

Bersch, Kirsten	38 hrs @\$40.46	11/14/11-6/18/12	Est Hrly/\$1,537
TOTAL ESTABLISHED HOURLY			\$1,537

Comment: Coordinator Data Director for Elementary Music  
01-LA County Arts Commission

Campbell, Charlotte	18.6 hrs @\$40.46	11/14/11-6/18/12	Est Hrly/\$753
Carey, Ann	18.6 hrs @\$40.46	11/14/11-6/18/12	Est Hrly/\$753
Fullerton, Anabella	18.6 hrs @\$40.46	11/14/11-6/18/12	Est Hrly/\$753
Hakomori, Teri	18.6 hrs @\$40.46	11/14/11-6/18/12	Est Hrly/\$753
Herrera, Myra	18.6 hrs @\$40.46	11/14/11-6/18/12	Est Hrly/\$753
Jordan, Nancy	18.6 hrs @\$40.46	11/14/11-6/18/12	Est Hrly/\$753
Le, Hong	18.6 hrs @\$40.46	11/14/11-6/18/12	Est Hrly/\$753
Mulgalian, Tamara	18.6 hrs @\$40.46	11/14/11-6/18/12	Est Hrly/\$753
Treuenfels, Therese	18.6 hrs @\$40.46	11/14/11-6/18/12	Est Hrly/\$753
TOTAL ESTABLISHED HOURLY			\$6,777

Comment: Arts for All Teacher Liaison  
01-IASA: Title II Teacher Quality

MALIBU HIGH SCHOOL

Corrigan, Brian	63 hrs @\$40.46	11/1/11-6/12/12	Est Hrly/\$2,549
Ervin, Jordan	33 hrs @\$40.46	11/1/11-6/12/12	Est Hrly/\$1,335
Mayle, Alex	33 hrs @\$40.46	11/1/11-6/12/12	Est Hrly/\$1,335
Ross-Neier, Bobbi	16 hrs @\$40.46	11/1/11-6/12/12	Est Hrly/\$ 647
Stowell, Rachel	33 hrs @\$40.46	11/1/11-6/12/12	Est Hrly/\$1,335
Wadsworth, Henry	33 hrs @\$40.46	11/1/11-6/12/12	Est Hrly/\$1,335
Wintner, Lisa	16 hrs @\$40.46	11/1/11-6/12/12	Est Hrly/\$ 647
TOTAL ESTABLISHED HOURLY			\$9,183

Comment: After-School Tutoring Program  
01-Gifts – Equity Fund

MCKINLEY ELEMENTARY SCHOOL

Mowry, Kristen	15 hrs @\$40.46	9/12/11-9/16/11	Est Hrly/\$607
TOTAL ESTABLISHED HOURLY			\$607

Comment: Read 180 Program  
01-Gifts – Equity Fund

Mowry, Kristen	15 hrs @\$40.46	11/14/11-11/23/11	Est Hrly/\$607
TOTAL ESTABLISHED HOURLY			\$607

Comment: Read 180 Program  
01-Gifts

MUIR ELEMENTARY SCHOOL

Petersil, Shanna	317.50 hrs @\$40.46	11/17/11-6/18/12	Est Hrly/\$12,846
TOTAL ESTABLISHED HOURLY			\$12,846

Comment: Supplemental Teacher for 2<sup>nd</sup> Grade  
01-Unrestricted Resource

ROGERS ELEMENTARY SCHOOL

Vasquez, Martha	110 hrs @\$40.46	1/9/11-6/15/12	Est Hrly/\$4,451
TOTAL ESTABLISHED HOURLY			\$4,451

Comment: Intervention Class  
01-IASA: Title I Basic-LW Inc/Neg

SANTA MONICA HIGH SCHOOL

Bart-Bell, Dana	2 hrs @\$40.46	11/8/11	Est Hrly/\$81
De La Cruz, Gilda	2 hrs @\$40.46	11/8/11	Est Hrly/\$81
Holland Mathews, Margie	2 hrs @\$40.46	11/8/11	Est Hrly/\$81
Reichle, Tisha	2 hrs @\$40.46	11/8/11	Est Hrly/\$81
TOTAL ESTABLISHED HOURLY			\$324

Comment: Black Academia Movement  
01-Gifts – Equity Fund

Walker, Megan	130 hrs @\$40.46	8/30/11-6/18/12	Est Hrly/\$5,260
TOTAL ESTABLISHED HOURLY			\$5,260

Comment: Supervision of Peer Tutors  
01-Gifts – Equity Fund

Contreras, Luis	130 hrs @\$40.46	10/4/11-6/14/12	Est Hrly/\$5,260
TOTAL ESTABLISHED HOURLY			\$5,260

Comment: After-School Tutoring  
01-Tier III Programs Cat Flex

Shafiey, Mariam	4.5 hrs @\$40.46	10/15/11	Est Hrly/\$182
TOTAL ESTABLISHED HOURLY			\$182

Comment: PSAT Proctor  
01-Reimbursed by ASB

Jimenez, Jaime	\$40.46, as needed	10/18/11-6/18/12	Est Hrly/\$----
TOTAL ESTABLISHED HOURLY			\$----

Comment: After-School Library Supervision  
01-Reimbursed by PTA

Kim, Doug	60 hrs @\$40.46	9/1/11-6/18/12	Est Hrly/\$2,428
TOTAL ESTABLISHED HOURLY			\$2,428

Comment: Supervision of Athletic Tutors  
01-Unrestricted Resource

Alvarado, Robert	2 hrs @\$40.46	11/17/11	Est Hrly/\$81
Blagojevic, Milos	2 hrs @\$40.46	11/17/11	Est Hrly/\$81
Cox, Shannon	2 hrs @\$40.46	11/17/11	Est Hrly/\$81
Fulcher, Nathan	2 hrs @\$40.46	11/17/11	Est Hrly/\$81
Louria, Meredith	2 hrs @\$40.46	11/17/11	Est Hrly/\$81
Silvestri, Marisa	2 hrs @\$40.46	11/17/11	Est Hrly/\$81
Tickler, Brian	2 hrs @\$40.46	11/17/11	Est Hrly/\$81
TOTAL ESTABLISHED HOURLY			\$567

Comment: Freshman Seminar Meeting  
01-Economic Impact Aid – SCE

Swift, Jessica	140 hrs @\$40.46	8/29/11-6/18/12	Est Hrly/\$5,664
TOTAL ESTABLISHED HOURLY			\$5,664

Comment: Additional Hours, Jazz Band 2  
01-Gifts

SPECIAL EDUCATION

Gonzalves, Diane	4 hrs @\$40.46	11/7/11-11/10/11	Est Hrly/\$162
Patino, Rachel	4 hrs @\$40.46	11/7/11-11/10/11	Est Hrly/\$162
TOTAL ESTABLISHED HOURLY			\$324

Comment: Witness Prep for Hearing  
01-Special Education

Stern, Amanda	15 days @\$384.36	10/24/11-12/20/11	Own Daily/\$5,765
TOTAL OWN DAILY			\$5,765

Comment: Additional Hours for Assessments  
01-Special Education

Tanzer, Arlene	32 hrs @\$69.41	11/1/11-12/20/11	Own Hrly/\$2,221
TOTAL OWN HOURLY			\$2,221

Comment: Additional Support for Speech Therapy Services  
01-Special Education

Campbell, Charlotte	2 hrs @\$40.46	10/26/11	Est Hrly/\$81
Siegel, Julie	2 hrs @\$40.46	10/26/11	Est Hrly/\$81
Wold, Jayme	2 hrs @\$40.46	10/26/11	<u>Est Hrly/\$81</u>
TOTAL ESTABLISHED HOURLY			\$243

Comment: Training  
01-Special Education

THEATER OPERATIONS

Barba, Yesenia	60 hrs @\$26.61	10/30/11-6/15/12	<u>Own Hrly/\$1,597</u>
TOTAL OWN HOURLY			\$1,597

Comment: CDS Representative  
01-Barnum Hall

WEBSTER ELEMENTARY SCHOOL

Tafi, Mary	65 hrs @\$40.46	11/1/11-12/20/11	<u>Est Hrly/\$2,630</u>
TOTAL ESTABLISHED HOURLY			\$2,630

Comment: Nutrition Instruction  
01-Gifts

ADDITIONAL ASSIGNMENT – EXTRA DUTY UNITS

ROOSEVELT ELEMENTARY SCHOOL

<u>Name</u>	<u>Rate</u>	<u>Assignment</u>	<u>Effective</u>	<u>Not to Exceed</u>
Goldman, Jennifer	2 EDU	Astro Camp	9/11-6/12	\$512
Hirt, Mary	2 EDU	Astro Camp	9/11-6/12	\$512
Simmons, Martha	2 EDU	Astro Camp	9/11-6/12	\$512
Snow, Angela	2 EDU	Astro Camp	9/11-6/12	\$512
Whitley, Ann	2 EDU	Astro Camp	9/11-6/12	<u>\$512</u>
TOTAL EDUS				\$2,560

MALIBU HIGH SCHOOL – Fall Athletics

<u>Name</u>	<u>Rate</u>	<u>Assignment</u>	<u>Effective</u>	<u>Not to Exceed</u>
Cary, John	12 EDU	JV Cross Country	9/11-11/11	\$3,072
Mulligan, Michael	13 EDU	Var. Boys Water Polo	9/11-11/11	<u>\$3,328</u>
TOTAL EDUS				\$6,400

MALIBU HIGH SCHOOL – Winter Athletics

<u>Name</u>	<u>Rate</u>	<u>Assignment</u>	<u>Effective</u>	<u>Not to Exceed</u>
Meyer, Andrew	13 EDU	Var. Girls Basketball	11/11-1/12	<u>\$3,328</u>
TOTAL EDUS				\$3,328

MALIBU HIGH SCHOOL – Middle School Academics

<u>Name</u>	<u>Rate</u>	<u>Assignment</u>	<u>Effective</u>	<u>Not to Exceed</u>
Bixler, William	3 EDU	MS Band	9/11-1/12	\$ 768
Cowgill, Elizabeth	1 EDU	MS Scholarship Adv	9/11-1/12	\$ 256
Lambert, Lisa	6 EDU	MS Student Activities	9/11-1/12	\$1,536
Leonard, Brigitte	6 EDU	MS Drama	9/11-1/12	\$1,536
Loch, Amy	3 EDU	MS Vocal Music	9/11-1/12	\$ 768
Yarber, Mary	2 EDU	MS Student Activities	9/11-1/12	\$ 512
Zander, Maia	3 EDU	MS Orchestra	9/11-1/12	<u>\$ 768</u>
TOTAL EDUS				\$6,144

MALIBU HIGH SCHOOL – High School Academics

<u>Name</u>	<u>Rate</u>	<u>Assignment</u>	<u>Effective</u>	<u>Not to Exceed</u>
Andino, Melisa	13 EDU	HS Pep Squad	9/11-1/12	\$3,328
Bixler, William	2 EDU	HS Band	9/11-1/12	\$ 512
Bowman-Smith, Carla	5 EDU	HS Yearbook	9/11-1/12	\$1,280
Chi, Ah Young	5 EDU	HS Scholarship Adv	9/11-1/12	\$1,280
Dahm, Katie	1 EDU	HS Scholarship Adv	9/11-1/12	\$ 256
Ervin, Jordan	5 EDU	HS Academic Decathlon	9/11-1/12	\$1,280
Loch, Amy	2 EDU	HS Vocal Music	9/11-1/12	\$ 512
Meyer, Andrew	12 EDU	HS Student Activities	9/11-1/12	\$3,072
Neier, Christopher	13 EDU	HS Athletic Director	9/11-1/12	\$3,328
Plaia, Jodi	10 EDU	HS Drama	9/11-1/12	\$2,560
Stowell, Rachel	5 EDU	HS Newspaper	9/11-1/12	\$1,280
Zander, Maia	5 EDU	HS Student Activities	9/11-1/12	\$1,280
Zander, Maia	2 EDU	HS Orchestra	9/11-1/12	\$ 512
TOTAL EDUS				\$20,480

**HOURLY TEACHERS**

ADULT EDUCATION

Bushin, Gregory	30 hrs @\$45.34	11/28/11-6/18/12	Est Hrly/\$1,360
TOTAL ESTABLISHED HOURLY			\$1,360

Comment: Math Lab Instruction  
11-Unrestricted Resource

**TOTAL ESTABLISHED HOURLY, OWN HOURLY AND OWN DAILY = \$ 139,650**

**ELECTIONS**

TEMPORARY CONTRACTS

<u>Name/Assignment/Location</u>	<u>Not to Exceed</u>	<u>Effective</u>
Iboko, Filippia/Pre-School Child Develop Svcs	50%	11/21/11-6/18/12
Johnson, Miyah/Pre-School Child Develop Svcs	100%	11/1/11-6/18/12
Leventhal, Norma/Pre-School Child Develop Svcs	100%	11/21/11-6/18/12
Samadzadeh, Sahar/Pre-School Child Develop Svcs	100%	11/21/11-6/18/12

**CHANGE IN EMPLOYEE STATUS: PROBATIONARY TO TENURED**

<u>Name/Assignment/Location</u>	<u>Not to Exceed</u>	<u>Effective</u>
Bodok, Susan/Librarian John Adams Middle School	100%	8/29/11
Burrows, Erin/SDC Rogers Elementary	100%	8/29/11
Cammarota, Catherine/SDC Muir Elementary	100%	8/29/11
Cha, Deborah/Elem Music Educational Services	100%	8/29/11

Corrigan, Michael/Music Santa Monica High School	100%	8/29/11
Diamond, Renee/Math Lincoln Middle School	100%	8/29/11
Gutierrez, Laurie/Art Santa Monica High School	100%	8/29/11
Murawski, Danielle/Spanish Lincoln Middle School	100%	8/29/11
O'Keefe, Eliana/Spanish Immersion John Adams Middle School	100%	8/29/11
Oseguera, Christian/RSP Lincoln Middle School	100%	8/29/11
Rajabali, Jahan/PBS John Adams Middle School	100%	8/29/11
Ruetschle, Valita/SDC Santa Monica High School	100%	8/29/11
Suminski, Mark/History Olympic High School	100%	8/29/11
Wadsworth, Henry/Math Malibu High School	100%	8/29/11

**SUBSTITUTE TEACHERS**  
**LONG-TERM SUBSTITUTES**

**Effective**

(@\$210.00 Daily Rate)

Kelly, Brenda	10/31/11
Padilla, Adriana	10/27/11

**PREFERRED SUBSTITUTES**

(@\$162.00 Daily Rate)

Biraben, Tammis Chandler	11/4/11
Dempsey, Bridget	11/29/11
Gutierrez, Carolina	10/18/11
Lee, Aisha	10/17/11
Sadeghpour, Mojdeh	11/17/11
Schwartz, Maria	10/12/11

**REGULAR DAY-TO-DAY SUBSTITUTES**

(@\$138.00 Daily Rate)

Donohoe, Christopher	11/23/11
Garcia, Christina	11/18/11
Garnreiter, Sean	11/10/11
Healey, Raphael	12/1/11
Khalili, Ramesh	11/17/11
Matone, Rocco	12/1/11
Polhemus, Ann	11/16/11
Shaw, Kathrine	11/10/11
Thompson, Sharon	11/23/11
Zeitsoff, Kathleen	11/10/11

**CHILD DEVELOPMENT SERVICES**

**(@\$16.19 Hourly Rate)**

O'Donnell, Melissa 11/2/11

**LEAVE OF ABSENCE (with pay)**

**Name/Location**

Moe, Rosalynn  
Lincoln Middle School

**Effective**

11/4/11-1/9/12  
[maternity]

Romo, Patricia  
Child Develop Svcs

11/28/11-5/28/12  
[medical]

**LEAVE OF ABSENCE (without pay)**

**Name/Location**

Moe, Rosalynn  
Lincoln Middle School

**Effective**

1/10/12-4/20/12  
[CFRA]

Moe, Rosalynn  
Lincoln Middle School

4/21/12-6/18/12  
[child care]

**RETIREMENT**

**Name/Location**

Loyd, Allen  
Educational Services

**Effective**

6/18/12

MOTION MADE BY:  
SECONDED BY:  
STUDENT ADVISORY VOTE:  
AYES:  
NOES:





TO: BOARD OF EDUCATION  
 FROM: SANDRA LYON / WILBERT YOUNG  
 RE: CLASSIFIED PERSONNEL – MERIT

ACTION/CONSENT  
 12/15/11

RECOMMENDATION NO. A.23

It is recommended that the following appointments for Classified Personnel (merit system) be approved and/or ratified. All personnel will be properly elected in accordance with District policies and salary schedules.

<b><u>ELECTION</u></b>		<b><u>EFFECTIVE DATE</u></b>
Ayala, Magdalena Student Services	Health Office Specialist 3.5 Hrs/SY/Range: 25 Step: A	11/21/11
Cole, Victor Franklin Elementary	Inst Asst – Physical Ed 3.25 Hrs/SY/Range: 20 Step: A	12/1/11
Fajardo, Angela Child Develop Svcs	Children Center Asst 3.5 Hrs/SY/Range: 18 Step: A	11/7/11
Fuentes, Evelyn Child Develop Svcs	Children Center Asst 3.5 Hrs/SY/Range: 18 Step: A	12/1/11
Garnreiter, Sean John Adams MS	Inst Asst – Music 4 Hrs/SY/Range: 20 Step: A	11/15/11
Griffis, Denise Food Services/Lincoln	Cafeteria Worker I 3.5 Hrs/SY/Range: 11 Step: A	12/1/11
Hess, Katya Child Develop Svcs	Children Center Asst 3.5 Hrs/SY/Range: 18 Step: A	11/14/11
Hobkirk, Christina Student Services	Health Office Specialist 3.5 Hrs/SY/Range: 25 Step: A	11/21/11
Iverson, Occa Roosevelt Elementary	Inst Asst – Special Ed 6 Hrs/SY/Range: 20 Step: F	11/21/11
Jones, Mashawnda Student Services	Health Office Specialist 3.5 Hrs/SY/Range: 25 Step: A	12/5/11
Morris, Sean Theater Operations	Custodian 3 Hrs/12 Month/Range: 22 Step: A	11/26/11
Muhammad, Baheerah Child Develop Svcs	Children Center Asst 3.5 Hrs/SY/Range: 18 Step: A	12/1/11
Regan, Nell Student Services	Health Office Specialist 3.5 Hrs/SY/Range: 25 Step: A	11/21/11
Rossi, Renee Child Develop Svcs	Children Center Asst 3.5 Hrs/SY/Range: 18 Step: A	12/1/11
Rubio, Ana Child Develop Svcs	Children Center Asst 3.5 Hrs/SY/Range: 18 Step: A	12/1/11
Santino, Susan Grant Elementary	Inst Asst – Classroom 3 Hrs/SY/Range: 18 Step: A	12/1/11

Villalobos, Eva Student Services	Health Office Specialist 3.5 Hrs/SY/Range: 25 Step: A	11/21/11
Villegas, Bibiana Student Services	Health Office Specialist 3.5 Hrs/SY/Range: 25 Step: A	11/21/11
Wilkinson, Gregory Webster Elementary	Inst Asst – Physical Ed 2 Hrs/SY/Range: 20 Step: A	11/7/11
Zullo, Kristin Child Develop Svcs	Children Center Asst 3.5 Hrs/SY/Range: 18 Step: A	10/27/11

**PROVISIONAL ASSIGNMENT**

Berumen, Theodore Purchasing	Senior Buyer	<b><u>EFFECTIVE DATE</u></b> 11/1/11-12/13/11
---------------------------------	--------------	--

**TEMP/ADDITIONAL ASSIGNMENTS**

Awad, Lisa Pt Dume Elementary	Sr. Office Specialist [additional hours, illuminate data entry]	<b><u>EFFECTIVE DATE</u></b> 10/24/11-10/31/11
Ayala, Magdalena Student Services	Health Office Specialist [additional hours, training]	11/6/11
Barrera, Amanda Special Ed	Inst Asst – Special Ed [additional hours, training]	11/9/11
Beruman, Ted John Adams MS	Sr. Buyer [additional hours, ASB]	11/18/11
Bosque, Gloria Child Develop Svcs	Children Center Asst [additional hour, as needed]	11/1/11-6/15/12
Boyd, Jacqueline SMASH	Inst Asst – Classroom [additional hours, class project]	11/1/11-12/31/11
Boyd, Katherine Santa Monica HS	Custodian [overtime, as needed]	11/1/11-6/30/12
Brotman, Mary Special Education	Inst Asst – Special Ed [additional hours, student need]	11/4/11-6/15/12
Cruz, Carmen Child Develop Svcs	Children Center Asst [additional hours, as needed]	8/29/11-6/15/12
Cueva, Sandra Child Develop Svcs	Children Center Asst [additional hours, as needed]	11/1/11-6/15/12
Diaz, Maria Child Develop Svcs	Children Center Asst [additional hours, as needed]	8/29/11-6/15/12
Douglas, Lamont Santa Monica HS	Campus Security Officer [overtime, as needed]	9/1/11-6/30/12
Gomez, Aida Child Develop Svcs	Children Center Asst [additional hours, as needed]	11/1/11-6/15/12
Gonzalez, Cecelia Child Develop Svcs	Children Center Asst [additional hours, as needed]	8/29/11-6/15/12

Gonzalez, Maximina Child Develop Svcs	Children Center Asst [additional hours, as needed]	8/29/11-6/15/12
Gordon-Johnson, Robin Rogers Elementary	Sr. Office Specialist [overtime, Illuminate data entry]	11/4/11-12/31/11
Gutierrez, Corina Child Develop Svcs	Children Center Asst [additional hours, as needed]	11/1/11-6/15/12
Gutierrez, Martha Franklin Elementary	Sr. Office Specialist [overtime, Illuminate data entry]	10/1/11-12/31/11
Hoorazideh, Shayesteh Child Develop Svcs	Children Center Asst [additional hours, as needed]	8/29/11-6/15/12
Hungerland, Maria Cabrillo Elementary	Inst Asst – Classroom [additional assignment, opening of school]	8/29/11-8/31/11
Jackson, Nisha Special Education	Inst Asst – Special Ed [additional hours, field trip]	11/9/11
Kleisley, Susan Child Develop Svcs	Children Center Asst [additional hours, as needed]	11/1/11-6/15/12
Kukor, Nadia SMASH	Inst Asst – Classroom [additional hours, class project]	11/1/11-11/30/11
Langley, Bhaki Gabrielle Malibu High School	Inst Asst – Classroom [additional hours, student need]	11/1/11-6/15/12
Lockett, Tyrone Santa Monica HS	Campus Security Officer [overtime, as needed]	9/1/11-6/30/12
Marquez, Lily Educational Svcs	Community Bilingual Liaison [overtime, Leadership Team Meetings]	10/19/11-6/30/12
Martinez, Daniel Child Develop Svcs	Children Center Asst [additional hours, as needed]	8/29/11-6/15/12
McKinley, Tyrone Facility Permits	Swim Instructor/Lifeguard [additional hours, as needed]	10/1/11-6/15/12
Mesrobian, Varso Franklin Elementary	Sr. Office Specialist [overtime, Illuminate data entry]	10/1/11-12/31/11
Perez, Graciella Operations	Custodian [overtime, as needed]	7/1/11-6/30/12
Perez-Madera, Salomon Special Education	Inst Asst – Specialized [additional hours, training]	11/9/11
Pemell, Barbara Child Develop Svcs	Children Center Asst [additional hours, as needed]	8/29/11-6/15/12
Pongas, Dorthea Child Develop Svcs	Children Center Asst [additional hours, as needed]	11/1/11-6/15/12
Preciado, Iris Edison Elementary	Sr. Office Specialist [overtime, Illuminate data entry]	11/1/11-12/31/11

Saenz, Alicia Child Develop Svcs	Children Center Asst [additional hours, as needed]	8/29/11-6/15/12
Shih, Jennifer Child Develop Svcs	Children Center Asst [additional hours, as needed]	11/1/11-6/15/12
Smith, Denise Human Resources	Office Specialist [additional assignment, legal project]	10/31/11-11/18/11
Smith, Denise Human Resources	Office Specialist [additional assignment, HR Processing]	11/21/11-12/20/11
<b><u>SUBSTITUTES</u></b>		<b><u>EFFECTIVE DATE</u></b>
Aguilar, Mark Operations	Custodian	11/16/11-6/15/12
Alexander, Jason Operations	Custodian	11/14/11-6/15/12
Arano, Dora Santa Monica HS	Inst Asst – Special Ed	10/20/11-4/20/12
Barnett, Julia Santa Monica HS	Inst Asst – Music	12/1/11-6/15/12
Bass, Royce Operations	Custodian	11/10/11-6/15/12
Collins, Barry Operations	Custodian	11/14/11-6/15/12
Gaur, Smriti Personnel Commission	Office Specialist	8/25/11-6/15/12
Howard, Lateef Operations	Custodian	10/1/11-6/15/12
Lopez, Asuncion Food Services	Cafeteria Worker I	11/23/11-6/18/12
Madden, Christina Operations	Custodian	11/14/11-6/15/12
Monroy, Rosa ROP	Office Specialist	11/14/11-6/30/12
Ocampo, Irma Child Develop Svcs	Bilingual Community Liaison	11/16/11-6/30/12
Rosenfeld, Henry Special Education	Inst Asst – Special Ed	11/1/11-6/15/12
Rossi, Renee Child Develop Svcs	Children Center Asst	12/2/11-6/30/12
Thobe, James Franklin Elementary	Inst Asst – Classroom	11/7/11-6/15/12
Venable, Shelton Operations	Custodian	11/14/11-6/15/12

Wright, Karen Child Develop Svcs	Sr. Office Specialist	10/7/11-11/30/11
<b><u>INVOLUNTARY TRANSFER</u></b>		<b><u>EFFECTIVE DATE</u></b>
Cuevas, Jose Operations	Custodian 8 Hrs/12 Month Fr: 8 Hrs/12 Month/Lincoln MS	11/7/11
Doty, Kenneth Lincoln Middle School	Custodian 8 Hrs/12 Month Fr: 8 Hrs/12 Mo/Operations	11/7/11
Islas, Haydee CDS/Muir Elementary	Children Center Asst 7 Hrs/SY Fr: 7 Hrs/SY/Pine Street	11/2/11
Sturgis, Lynn CDS/Pine St.	Children Center Asst 7 Hrs/SY Fr: 7 Hrs/SY/Muir Elementary	11/2/11
<b><u>VOLUNTARY TRANSFER</u></b>		<b><u>EFFECTIVE DATE</u></b>
Brewer, Ariana Roosevelt Elementary	Inst Asst – Special Ed 5 Hrs/SY Fr: 4 Hrs/SY/Grant Elementary	11/14/11
Flores, Albert Roosevelt Elementary	Inst Asst – Classroom 6 Hrs/SY Fr: 3.8 Hrs/SY/Franklin Elementary	11/7/11
Moscoco, Suzanne Cabrillo Elementary	Elementary Library Coordinator 7 Hrs/10 Month Fr: 7 Hrs/10 Month/Muir Elementary	11/1/11
<b><u>CHANGE IN ASSIGNMENT</u></b>		<b><u>EFFECTIVE DATE</u></b>
Tanamas, Ayda Special Education	Inst Asst – Developmental Health 8 Hrs/SY Fr: 7 Hrs/SY	11/4/11
<b><u>LEAVE OF ABSENCE (PAID)</u></b>		<b><u>EFFECTIVE DATE</u></b>
Cruz, Mary Food Services	Cafeteria Worker I Medical	10/19/11-1/2/12
De Almeida, Suzanne Lincoln Middle School	Inst Asst – Special Ed Medical	11/7/11-12/3/11
Padilla, Ramiro Operations	Equipment Operator Medical	11/1/11-12/31/11
Ridley, Tischa Food Services	Cafeteria Worker II FMLA	10/20/11-10/31/11
<b><u>LEAVE OF ABSENCE (UNPAID)</u></b>		<b><u>EFFECTIVE DATE</u></b>
Ridley, Tischa Food Services	Cafeteria Worker II FMLA	11/1/11-11/4/11

**PROFESSIONAL GROWTH**

		<b><u>EFFECTIVE DATE</u></b>
Cruz, Carmen Child Develop Svcs	Children Center Asst	1/1/12
Glover, Tomita Santa Monica HS	Administrative Assistant	12/1/11
Goodwin, Sheri Santa Monica HS	Administrative Assistant	1/1/12
Tursi-Gridley, Lisa Roosevelt Elementary	Administrative Assistant	12/1/11
Vasquez, Graciela Malibu High School	Campus Security Officer	1/1/12

**WORKING OUT OF CLASS**

		<b><u>EFFECTIVE DATE</u></b>
Tirado, Leticia Food Services	Cafeteria Worker II Fr: Cafeteria Worker I	10/21/11-11/4/11

**SUSPENSION WITHOUT PAY**

		<b><u>EFFECTIVE DATE</u></b>
AQ0717881 Food Services	Cafeteria Worker I	12/14/11-12/15/11

**RESIGNATION**

		<b><u>EFFECTIVE DATE</u></b>
Gilbertson, Kelly Webster Elementary	Inst Asst - Classroom	12/2/11
Kerrigan, Michelle Special Education	Inst Asst – Specialized	11/22/11
Rossi, Renee Child Develop Svcs	Children Center Asst	12/2/11

**RETIREMENT**

		<b><u>EFFECTIVE DATE</u></b>
Chouinard, Deanna Santa Monica HS	Inst Asst – Special Ed	12/31/11

MOTION MADE BY:  
 SECONDED BY:  
 STUDENT ADVISORY VOTE:  
 AYES:  
 NOES:

TO: BOARD OF EDUCATION

ACTION/CONSENT

12/15/11

FROM: SANDRA LYON / DEBRA MOORE WASHINGTON / WILBERT YOUNG

RE: CLASSIFIED PERSONNEL – NON-MERIT

RECOMMENDATION NO. A.24

It is recommended that the following be approved and/or ratified for Classified Personnel (Non-Merit). All personnel assigned will be properly elected on a temporary basis to be used as needed in accordance with District policies and salary schedules.

**COACHING ASSISTANT**

BEVINGTON, JASON	SANTA MONICA HS	11/15/11-6/30/12
DOS SANTOS, LUIZ	SANTA MONICA HS	11/22/11-4/30/12
JACKSON, BRIANNA	MALIBU HIGH SCHOOL	9/1/11-6/30/12
PROST, COREY	SANTA MONICA HS	11/14/11-6/30/12
VASQUEZ, ANGEL	SANTA MONICA HS	11/29/11-6/30/12

**NOON SUPERVISION AIDE**

GRANT, CAROLYN	JOHN ADAMS MS	11/28/11-11/30/11
MC GILL, VICTORIA	MUIR ELEMENTARY	9/28/11-6/15/12
OSAKI, BRENDA	MCKINLEY ELEMENTARY	11/1/11-6/15/12
RODRIGUEZ, OFELIA	EDISON ELEMENTARY	11/1/11-6/22/12
RODRIGUEZ, SERGIO	EDISON ELEMENTARY	11/1/11-6/22/12

**STUDENT WORKER – PEER TUTOR**

BAILEY, MESSIAH	SANTA MONICA HS	8/30/11-6/18/12
CONN, HANNA	SANTA MONICA HS	8/30/11-6/18/12
CRANE, SEAN	SANTA MONICA HS	8/30/11-6/18/12
GRIFKA, BENJAMIN	SANTA MONICA HS	8/30/11-6/18/12
HARRESCHOU, SAM	SANTA MONICA HS	8/30/11-6/18/12
PALMER, RYAN	SANTA MONICA HS	8/30/11-6/18/12
STEVENSON, WADE	SANTA MONICA HS	8/30/11-6/18/12

**STUDENT WORKER – WORKABILITY**

FRIEDLAND, CHASE	SPECIAL EDUCATION	11/1/11-6/30/16
MARASHI, PARHAM	SPECIAL EDUCATION	9/16/11-6/30/14
NUNEZ, DEANNA	SPECIAL EDUCATION	10/18/11-6/30/13

MOTION MADE BY:

SECONDED BY:

STUDENT ADVISORY VOTE:

AYES:

NOES:





TO: BOARD OF EDUCATION

ACTION/CONSENT

12/15/11

FROM: SANDRA LYON / DEBRA MOORE WASHINGTON

RE: STUDENT TEACHING AGREEMENT – CALIFORNIA STATE UNIVERSITY,  
DOMINGUEZ HILLS

RECOMMENDATION NO. A.25

It is recommended that the Board of Education enter into a Student Teaching Agreement between California State University, Dominguez Hills and the Santa Monica-Malibu Unified School District.

INSTITUTION: California State University, Dominguez Hills  
EFFECTIVE: January 1, 2012 through December 31, 2014  
PAYMENT: The University shall pay the District \$16.67  
per quarter unit, or \$25.00 per semester unit.

COMMENT: The District participates with university teacher training institutions in providing classroom teaching situations under the supervision of a master teacher.

MOTION MADE BY:

SECONDED BY:

STUDENT ADVISORY VOTE:

AYES:

NOES:



TO: BOARD OF EDUCATION

ACTION/CONSENT

12/15/11

FROM: SANDY LYON / CHIUNG-SALLY CHOU / TOM WHALEY

RE: PERMIT TO USE CIVIC AUDITORIUM FACILITIES

RECOMMENDATION NO. A.26

It is recommended that the Board of Education approve Permit #6683, agreement with the City of Santa Monica for the use of the authorized premises of the Santa Monica Civic Auditorium for a total fee not to exceed \$16,000. This fee includes estimated equipment, labor and services provided by the Civic Auditorium.

FUNDING INFORMATION

SOURCE: GENERAL FUND RESTRICTED - GIFTS  
CURRENTLY BUDGETED: YES  
ACCOUNT NUMBER: 01-90120-0-17300-10000-5630-030-1300  
DESCRIPTION: LEASE-RENTAL/STAIRWAY-GIFT/CURRICULUM

BACKGROUND INFORMATION

This agreement is made between the City of Santa Monica ("the City") and the Santa Monica-Malibu Unified School District ("Permittee") for Stairway of the Stars event at the Civic Auditorium.

To use and occupy the authorized premises described below, on the date(s) and time(s) described, for the activities and at the rental described as follows:

EVENT TITLE: **STAIRWAY OF THE STARS**  
AUTHORIZED PREMISES: Main Hall, Lobby and East Wing

DAY	DATE	TIME	ACTIVITY	RENTAL
Wednesday	3/21/12	12:00-8:00pm	Move-in/Rehearsal	Waived
Thursday	3/22/12	8:00-3:00pm	Rehearsal	Waived
Thursday	3/22/12	7:00-10:30pm	Event	Waived
Friday	3/23/12	7:00-10:30pm	Event	Waived
Friday	3/23/12	10:30 pm-midnight	Move-out	Waived

**Total Base Rental** \$0

**Event Time:** Thursday and Friday, March 22 & 23, 2012 at 7:00 p.m.

A copy of contract is available at Superintendent's Office, Fiscal Services, Insurance Office and Educational Services – Visual & Performing Arts Department.

MOTION MADE BY:  
SECONDED BY:  
STUDENT ADVISORY VOTE:  
AYES:  
NOES:



TO: BOARD OF EDUCATION

ACTION/CONSENT

12/15/11

FROM: SANDRA LYON / JANECE L. MAEZ

RE: EXTENSION OF FINANCIAL OVERSIGHT COMMITTEE TERMS

RECOMMENDATION NO. A.27

It is recommended that the Board of Education extend the terms for Financial Oversight Committee (FOC) members with terms ending December 31, 2011, until the time that the Board fills the vacancies.

COMMENTS: A press release announcing how members of the public can apply to serve on the FOC was sent on November 23, 2011. Completed applications are due to the Superintendent's office by Tuesday, December 20, 2011.

Below is the FOC Roster:

<b>Term Ends 12/31/11</b>	<b>Term Ends 12/31/12</b>	<b>Term Ends 12/31/13</b>
Joan Chu Reese	Craig Hamilton	Patricia Hoffman
Cynthia Torres	Gordon Lee	Paul Silvern
David Vukadinovich	Carrie Wagner	Shelly Slaugh Nahass
	Thomas Larmore	Craig Foster

MOTION MADE BY:

SECONDED BY:

STUDENT ADVISORY VOTE:

AYES:

NOES:



---

## **MAJOR ITEMS**





TO: BOARD OF EDUCATION

ACTION/MAJOR

12/15/11

FROM: SANDRA LYON

RE: ELECTION OF BOARD OF EDUCATION OFFICERS

RECOMMENDATION NO. A.28

It is recommended that \_\_\_\_\_ be elected President of the Board of Education of the Santa Monica-Malibu Unified School District.

RECOMMENDATION NO. A.28a

It is recommended that \_\_\_\_\_ be elected Vice- President of the Board of Education of the Santa Monica-Malibu Unified School District.

RECOMMENDATION NO. A.28b

It is recommended that the Superintendent, Sandra Lyon, be designated as the Secretary of the Board of Education for the Santa Monica-Malibu Unified School District.

COMMENT: In accordance with Board Bylaw 9100, the officers of the Board of Education of the Santa Monica-Malibu Unified School District shall consist of a President, Vice President, and Secretary. Each shall be elected at the organization meeting held annually each year.

MOTION MADE BY:

SECONDED BY:

STUDENT ADVISORY VOTE:

AYES:

NOES:



TO: BOARD OF EDUCATION  
FROM: SANDRA LYON / JANECE MAEZ  
RE: CERTIFICATION OF AUTHORIZED SIGNATURES

ACTION/MAJOR  
12/15/11

RECOMMENDATION NO. A.29

It is recommended that the following persons be authorized to sign warrants, orders for salary payment, notices of employment, contracts, orders drawn on the funds of the school district and other documents as directed by the Board of Education:

Ms. Sandra Lyon, Superintendent  
Ms. Janece L. Maez, Asst. Superintendent, Business and Fiscal Services/Chief Financial Officer  
Ms. Debra Moore Washington, Assistant Superintendent, Human Resources  
Dr. Chiung-Sally Chou, Chief Academic Officer  
Ms. Judy Abdo, Director of Child Development Services  
Ms. Maureen L. Bradford, Director of Assessment, Research & Evaluation  
Ms. Marolyn Freedman, Director of Student Services  
Mr. Orlando R. Griego, Director of Food & Nutrition Services  
Ms. Peggy Harris, Director of Curriculum & Staff Development  
Ms. Wang Pin-Ju "Pat" Ho, Director of Business & Fiscal Services  
Ms. Virginia I. Hyatt, Director of Purchasing & Warehouse  
Ms. Ruthy Mangle, Director of Information Services  
Dr. Sara Woolverton, Director of Special Education  
Mr. Stuart A. Sam, Director of Facility Improvement Projects  
Mr. Jan Strnad, Facility Permit Supervisor  
Mr. Elhamy Tanios, Assistant Director of Fiscal Services  
Mr. Terance Venable, Manager of Operations and Grounds  
Mr. Terry Kamibayashi, Manager of Maintenance and Construction  
Mr. Carey W. Upton, Director of Theater Operations and Facility Permits

It is further recommended that the attached *Certification of Signatures* document be completed and filed with the County Superintendent of Schools in accordance with Education Code §42633. The signatures will be considered valid for the period December 3, 2011, through December 2, 2012.

MOTION MADE BY:  
SECONDED BY:  
STUDENT ADVISORY VOTE:  
AYES:  
NOES:



TO: BOARD OF EDUCATION

ACTION/MAJOR

12/15/11

FROM: SANDRA LYON

RE: ELECTION OF ANNUAL REPRESENTATIVE TO THE LOS ANGELES  
COUNTY SCHOOL TRUSTEES ASSOCIATION (LACSTA) FOR  
2010-2011

RECOMMENDATION NO. A.30

It is recommended that \_\_\_\_\_ be elected by the Board of Education as the Annual Representative to the Los Angeles County School Trustees Association for 2011-12. The Representative shall perform duties as described in Standing Rule #6 as follows:

Representatives: Each School Board will be asked to select a board member at their organizational meeting to serve as the LACSTA representative.

The representative's role is to:

- a. vote on all Association matters;
- b. communicate between the Executive Board, the Association, and the local Board.

COMMENT: Board Member Patel was elected as the board's representative for the 2010-2011 term.

MOTION MADE BY:  
SECONDED BY:  
STUDENT ADVISORY VOTE:  
AYES:  
NOES:



TO: BOARD OF EDUCATION

ACTION/MAJOR

12/15/11

FROM: SANDRA LYON

RE: ELECTION OF VOTING REPRESENTATIVE: LOS ANGELES COUNTY  
COMMITTEE ON SCHOOL DISTRICT ORGANIZATION

RECOMMENDATION NO. A.31

It is recommended that \_\_\_\_\_ be elected as the board's voting representative to elect members to the Los Angeles County Committee on School District Organization from December 2011 through November 2012.

COMMENT: Each school board is asked to select a board member at its annual organizational meeting to serve as the voting representative to elect members to the Los Angeles County Committee on School District Organization. Board Member Lieberman volunteered to serve as last year as the board's representative.

MOTION MADE BY:

SECONDED BY:

STUDENT ADVISORY VOTE:

AYES:

NOES:





TO: BOARD OF EDUCATION

ACTION/MAJOR

12/15/11

FROM: SANDRA LYON / DEBRA MOORE WASHINGTON

RE: INCREASE IN STAFFING (FTE) – JOHN MUIR ELEMENTARY SCHOOL

RECOMMENDATION NO. A.32

It is recommended that the Board of Education approve the addition of a part-time, hourly teacher (0.4583 FTE) to support the 2<sup>nd</sup> grade program at John Muir Elementary.

FUNDING NOTE: The 2011-2012 budget will be adjusted \$16,600 for salary and benefits.

MOTION MADE BY:

SECONDED BY:

STUDENT ADVISORY VOTE:

AYES:

NOES:



TO: BOARD OF EDUCATION

ACTION/MAJOR

12/15/11

FROM: SANDRA LYON / DEBRA MOORE WASHINGTON / MAROLYN FREEDMAN

RE: INCREASE IN STAFFING (FTE) – STUDENT SERVICES

RECOMMENDATION NO. A.33

It is recommended that the Board of Education approve an increase of five (3.5 Hours/School Year) Health Office Specialist positions (total FTE of 2.1875) to support the Health Office functions at elementary schools.

FUNDING NOTE: The 2011-2012 budget will be adjusted \$163,253 for salary and benefits

MOTION MADE BY:

SECONDED BY:

STUDENT ADVISORY VOTE:

AYES:

NOES:



TO: BOARD OF EDUCATION

ACTION/MAJOR

12/15/11

FROM: SANDRA LYON / CHIUNG-SALLY CHOU / SARA WOOLVERTON

RE: INCREASE IN STAFFING (FTE) – SPECIAL EDUCATION / JUAN CABRILLO  
ELEMENTARY SCHOOL

RECOMMENDATION NO. A.34

It is recommended that the Board of Education approve an increase of two (2) Moderate/Severe Special Education teachers to support student needs in the Life Skills class at Juan Cabrillo Elementary School (2.0 FTE).

FUNDING NOTE: The 2011-2012 budget will be adjusted \$127,422 for salary and benefits.

MOTION MADE BY:  
SECONDED BY:  
STUDENT ADVISORY VOTE:  
AYES:  
NOES:



TO: BOARD OF EDUCATION

ACTION/MAJOR

12/15/11

FROM: SANDRA LYON / CHIUNG-SALLY CHOU / SARA WOOLVERTON

RE: INCREASE IN STAFFING (FTE) – SPECIAL EDUCATION

RECOMMENDATION NO. A.35

It is recommended that the Board of Education approve an increase of one (4.5 Hours/School Year) Instructional Assistant – Developmental Health (0.5625 FTE) to comply with IEP requirements.

FUNDING NOTE: The 2011-2012 budget will be adjusted \$22,368 for salary and benefits

MOTION MADE BY:

SECONDED BY:

STUDENT ADVISORY VOTE:

AYES:

NOES:





TO: BOARD OF EDUCATION  
FROM: SANDRA LYON / JANECE L. MAEZ / PAT HO  
RE: APPROVAL OF THE 2011-12 FIRST INTERIM REPORT

ACTION/MAJOR  
12/15/11

RECOMMENDATION NO. A.36

It is recommended that the Board of Education approve the 2011-12 First Interim Report and the corresponding budget adjustments.

COMMENTS: Education Code (EC) Sections §35035 (g), §42130, and §42131 require the governing board of each local educational agency (LEA) to certify at least twice a year as to the LEA's ability to meet its financial obligations for the remainder of that fiscal year and for the subsequent two fiscal years.

The 2011-12 Budget was adopted by the Board of Education on June 30, 2011 and was approved by the Los Angeles County Office of Education (LACOE).

Since the adoption of the initial budget, changing conditions have necessitated adjusting the District budget. All of the expenditure and revenue changes previously approved by the Board at the November 17, 2011 meeting or proposed for approval at this time are individually identified in the First Interim Report (October 31, 2011), which is included as a part of this document.

The First Interim Report was developed based on the following Revenue and Expenditure Assumptions.

**REVENUE ASSUMPTIONS**

2.24% statutory COLA for 2011-12 Revenue Limit funding.

The 2011-12 Base Revenue Limit for Santa Monica-Malibu USD is \$6,631.61 per average daily attendance (ADA) using the 2010-11 P2 ADA of 10,974. A <19.754%> deficit factor is applied to the Revenue Limit, and the adjusted Based Revenue Limit is \$5,321.60 per ADA. The total Revenue Limit is estimated to be \$59,756,273..

There is a (\$1,560,873) prior year Revenue Limit Adjustment budgeted to reflect the 2003-06 Revenue Limit offset for Redevelopment Fees. Funds have been reserved in the Redevelopment Fund for this adjustment and have been transferred to the General Fund to offset this adjustment.

The 2011-12 District Enrollment (CBEDS) is 11,344.

The Lottery allocation will be \$140 per annual ADA is made up of \$117 for unrestricted expenditures and the remaining \$23 is for Proposition 20 – Mandated for Instructional Materials.

The District will participate in the K-3 Class Size Reduction Program and receive \$1,071 per pupil, less the penalties for increasing class size to 25:1. The total projected revenue is \$2,202,811.

There is no COLA for Special Education Funding. Adjusted Special Education funding is \$5,094.39 per ADA based on AB602. This amount reflects a reduction in SELPA funding due to the elimination of the statewide Special Disability Adjustment.

Special Education transfer from the Revenue Limit is \$1,837,046.

The 2010-11 Mandated Reimbursement revenue is \$157,443 as of October 31, 2011.

The Measure "R" parcel tax at \$358.91 per parcel is estimated to generate \$10,685,827, after processing senior exemptions.

The Estimated revenue from Prop Y is \$5,500,000 from the City of Santa Monica.

The District will receive \$7,979,618 of Joint Use Agreement funding from the City of Santa Monica.

The District will receive \$135,500 of Joint Use Agreement funding from the City of Malibu.

The combined lease revenue is \$2,610,748, which is from the DoubleTree Hotel, Madison Site, 9<sup>th</sup> & Colorado and 16<sup>th</sup> Street properties.

The estimated revenue from Permits is \$641,067.

The estimated revenue of Tier III programs is \$4.3 million.

PTA Contribution from various schools is \$2,278,462.

### **EXPENDITURE ASSUMPTIONS**

#### **Staffing Ratio:**

K-3		25
Grade 4-5	(Title I schools)	27
Grade 4-5	(Other)	30
Grade 6-8	John Adams	33
Grade 6-12	(Other)	35

#### **Full-Time Equivalent (FTE) Changes – Since the Adopted Budget:**

**Certificated:** Due to the increase of enrollment, 12.4 FTE teaching positions are budgeted to be increased, as follows:

- 1.0 FTE teaching position at Webster Elementary School
- 1.0 FTE teaching position at Grant Elementary School
- 1.0 FTE teaching position at Rogers Elementary School
- 1.0 FTE teaching position at McKinley Elementary School
- 1.2 FTE teaching positions at John Adams Middle School
- 1.8 FTE teaching positions at Lincoln Middle School
- 4.0 FTE teaching positions at Malibu High School
- 1.4 FTE teaching positions at Santa Monica High School

#### **Management:**

- 0.4 FTE increase of Coordinator in Special Education Department
- 0.8 FTE increase of Psychologist in Special Education Department
- 1.0 FTE increase of Facility Permit Supervisor in Permit Department

#### **Classified:**

- 1.0 FTE Office Specialist in Educational Services
- 1.5 FTE increase of Instructional Aides at Roosevelt Elementary School
- 1.0 FTE increase of Custodian for SAMO & City Joint Use Agreement
- 1.0 FTE increase Equipment Operator for SAMO & City Joint Use Agreement

1.0 FTE Licensed Vocational Nurse  
2.2 FTE Health Office Specialist  
0.125 FTE increase of Instructional Aide at Webster  
1.000 FTE PE Instructional Aide at Santa Monica High School  
17.80 FTE increase of Instructional Aides at various schools (PTA funded)  
0.813 FTE increase of Instructional Aides at Santa Monica High School (504 agreement)  
0.375 FTE increase of Music Instructional at Santa Monica High School

**Salary:**

- Employees placed on Board approved salary schedules
  - No furlough days apply
- 1.5% step and column increase for certificated employees – used in multi-year projections  
1.5% step and column increase for classified employees – used in multi-year projections

**Benefits:**

**Statutory Benefits:**

8.25% STRS employer contribution rate  
6.20% OASDI contribution rate  
1.45% Medicare contribution rate  
1.61% SUI contribution  
2.20% Workers' Compensation contribution  
10.923% PERS Employer contribution rate  
2.097% PERS Reduction  
1.25% Other Post-employment Benefit

**Summer Schools:**

The cost of Summer Schools is \$528,723.

**Others:**

The budget for the schools' Formula Money allocation for supplies and other operating costs:

K-5 \$ 37.75 per pupil

6-8 \$ 42.66 per pupil

9-12 \$ 63.48 per pupil

Lottery Instructional Materials funds (Proposition 20) are used to partly fund this allocation.

\$145,066 of the 2009-10 Mandated Reimbursements is allocated to Schools.

\$700,907 of Tier III fund is allocated to Schools.

The contribution for the Ongoing Maintenance program is \$3,442,924.

The Property and Liability Insurance is \$1,131,368.

**TRANSFERS**

\$1,560,873 is budgeted to transfer from Fund 40 to Fund 01 to offset the Revenue Limit Adjustment for 2003-2006.

The Indirect Rate is changed from 5.62% to 5.37% in 2011-12.

**RESERVE for ECONOMIC UNCERTAINTIES**

The District Budget reflects a 3% reserve of the total General Fund Budget for 2011-12 through 2013-14.

### **Mid-Year Cut**

The District anticipates that the State will make revenue reductions mid-year. We expect to know the actual amounts by mid-December. To accommodate this reduction, the District has assigned a portion of the fund balance for this purpose. This amount is \$3,311,210 as projected by LACOE.

#### **The following documents include:**

- Summary General Fund Budget
- 2011-12 Major Categorical Programs
- Local General Fund Contribution (LGFC)
- Multi-year Financial Projection (MYFP) through 2013-14
- Summary of Major Funds

The complete 2011-12 District First Interim Budget in the State Standard Account Code Structure (SACS) format is attached to the Agenda as Attachment A (*green pages*).

MOTION MADE BY:

SECONDED BY:

STUDENT ADVISORY VOTE:

AYES:

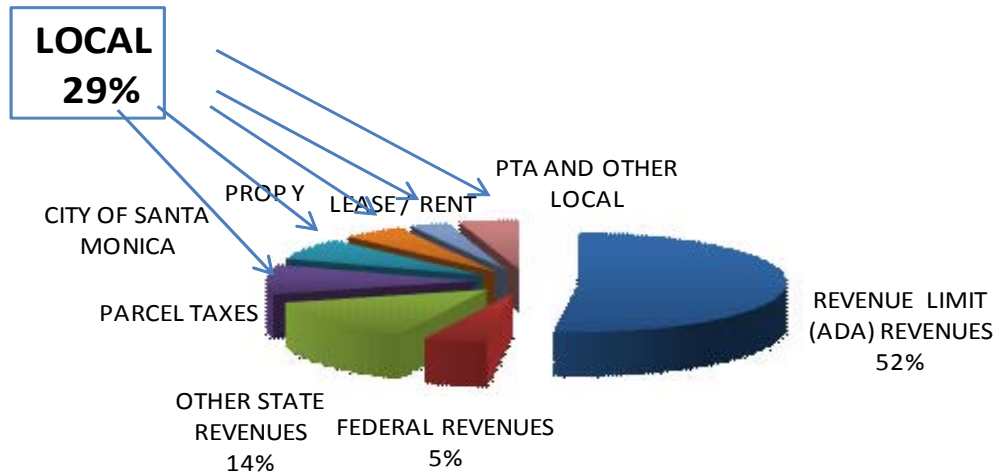
NOES:

**SANTA MONICA-MALIBU UNIFIED SCHOOL DISTRICT  
2011-2012 FIRST INTERIM**

**GENERAL FUND (UNRESTRICTED & RESTRICTED)**

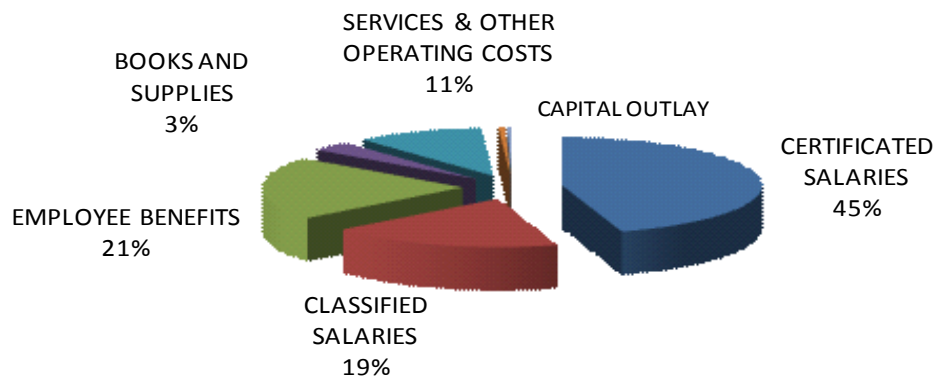
<b>BEGINNING BALANCE</b>	<b>\$</b>	<b>23,354,109</b>
<b>PROJECTED REVENUES:</b>		
REVENUE LIMIT (ADA) REVENUES	\$	58,195,400
FEDERAL REVENUES	\$	5,569,515
OTHER STATE REVENUES	\$	15,576,128
PARCEL TAXES	\$	10,685,827
CITY OF SANTA MONICA	\$	7,976,618
PROP Y	\$	5,500,000
LEASE / RENT	\$	3,341,815
PTA AND OTHER LOCAL	\$	5,230,606
TRANSFER IN FROM FUND 40	\$	1,560,873
<b>TOTAL REVENUES:</b>	<b>\$</b>	<b>113,636,782</b>
<b>TOTAL AVAILABLE FUNDS</b>	<b>\$</b>	<b>136,990,891</b>

**PROJECTED GENERAL FUND (FUND 01)  
REVENUES**



<b>GENERAL FUND (UNRESTRICTED &amp; RESTRICTED)</b>	
<b>PROJECTED EXPENDITURES:</b>	
CERTIFICATED SALARIES	\$ 54,613,951
CLASSIFIED SALARIES	\$ 22,770,809
EMPLOYEE BENEFITS	\$ 25,701,064
BOOKS AND SUPPLIES	\$ 3,995,591
SERVICES & OTHER OPERATING COST	\$ 12,560,593
CAPITAL OUTLAY	\$ 692,717
OTHER OUTGO	\$ (473,227)
<b>TOTAL EXPENDITURES:</b>	<b>\$ 119,861,498</b>
<b>PROJECTED FUND BALANCE:</b>	<b>\$ 17,129,393</b>

### PROJECTED TOTAL GENERAL FUND (FUND 01) EXPENDITURES



<b>SANTA MONICA-MALIBU UNIFIED SCHOOL DISTRICT</b>			
<b>2011-2012 MAJOR CATEGORICAL PROGRAMS</b>			
	<b>2011-12 ADOPTED BUDGET</b>	<b>2011-12 1ST INTERIM BUDGET</b>	<b>CHANGE</b>
<b>FEDERAL PROGRAMS</b>			
TITLE I: BASIC	935,687	1,261,300	325,613
ARRA - TITLE I BASIC	18,917	37,513	18,596
ARRA - EDUCATION JOBS FUND	-	298,243	298,243
TITLE II: TEACHER QUALITY	419,035	562,872	143,837
TITLE II: ENHANCING ED THROUGH TECH	2,100	1,656	(444)
TITLE II: ENHANCING ED THROUGH TECH PART D	41,135	106,882	65,747
ARRA - ENHANCING ED THROUGH TECH	48,050	81,159	33,109
TITLE III: LEP & IMM	110,488	174,610	64,122
MEDICAL REIMBURSEMENT	230,000	230,000	-
SP ED: IDEA ENTITLEMENT	2,453,879	2,377,334	(76,545)
DEPT REHAB: TRANSITION PARTNERSHIP PROG	137,946	137,946	-
<b>TOTAL FEDERAL REVENUES:</b>	<b>4,397,237</b>	<b>5,269,515</b>	<b>872,278</b>
<b>STATE PROGRAMS</b>			
SPECIAL EDUCATION - AB602	5,796,742	5,698,025	(98,717)
WORKABILITY/SPED STAFF DEVELOPMENT	69,535	70,212	677
HOME TO SCHOOL TRANSPORTATION	415,271	415,271	-
SPECIAL ED TRANSPORTATION	384,438	384,438	-
ECONOMIC IMPACT AID	767,354	767,354	-
LOTTERY - INSTRUCTIONAL MATERIALS	162,174	182,174	20,000
REGIONAL OCCUPATIONAL PROGRAM (ROP)	965,917	965,917	-
<b>TOTAL STATE CATEGORICAL REVENUES:</b>	<b>8,561,431</b>	<b>8,483,391</b>	<b>(78,040)</b>

<b>SANTA MONICA-MALIBU UNIFIED SCHOOL DISTRICT</b>			
<b>LOCAL GENERAL FUND CONTRIBUTION (LGFC)</b>			
	<b>2011-12 ADOPTED BUDGET</b>	<b>2011-12 1ST INTERIM BUDGET</b>	<b>CHANGE</b>
SPECIAL EDUCATION	14,488,203	14,115,672	(372,531)
SP ED TRANSPORTATION	761,199	759,708	(1,491)
REGIONAL OCCUPATIONAL PROGRAM	8,700	8,700	-
HOME TO SCHOOL TRANSPORTATION	246,259	272,082	25,823
ON GOING MAINTENANCE PROGRAM	3,409,930	3,442,924	32,994
<b>TOTAL CONTRIBUTION:</b>	<b>18,914,291</b>	<b>18,599,086</b>	<b>(315,205)</b>

<b>SANTA MONICA - MALIBU USD</b>			
<b>MULTI-YEAR PROJECTION</b>			
<b>UNRESTRICTED GENERAL FUND -ASSUMPTIONS</b>			
<b>10/31/2011</b>			
<b>Factor</b>	<b>2011-12</b>	<b>2012-13</b>	<b>2013-14</b>
Statutory COLA	2.24%	3.10%	2.80%
Base Revenue Limit Per P2 ADA	\$ 6,631.61	\$ 6,835.94	7,026.17
<b>Deficit Factor</b>	<b>-19.754%</b>	<b>-19.754%</b>	<b>-19.754%</b>
	<b>\$ (14,376,554)</b>	<b>\$ (14,601,429)</b>	<b>\$ (14,906,741)</b>
Enrollment Projection*	11,344	11,292	11,292
P2 ADA Projection	10,807	10,747	10,747
Revenue Limit ADA (Prior Yr)	10,974	10,807	10,747
Federal Revenues	0%	0%	0%
City of Santa Monica	\$ 7,976,618	\$ 8,136,151	\$ 8,298,874
Measure "R"	\$ 10,685,827	\$ 10,920,915	\$ 11,204,859
Prop. Y	\$ 5,500,000	\$ 5,500,000	\$ 5,500,000
Lottery	\$140/ADA	\$128.75/ADA	\$128.75/ADA
Step & Column Incr. - Certificated	1.50%	1.50%	1.50%
Step & Column Incr. - Mgmt.	1.50%	1.50%	1.50%
Step & Column Incr. - Classified	1.50%	1.50%	1.50%
Health/Welfare	7%	7%	7%
Workers' Compensation	2.20%	2.20%	2.20%
Indirect Cost Rate	5.37%	5.00%	5.00%
Interest Rate	1.50%	2.00%	2.00%
Interfund Transfer fm Fund 40	\$ 1,560,873		
Ongoing Maintenance	3%	3%	3%
Reserve for Uncertainties	3%	3%	3%



<b>SANTA MONICA - MALIBU USD</b>			
<b>MULTI-YEAR PROJECTION</b>			
<b>UNRESTRICTED GENERAL FUND</b>			
<b>10/31/2011</b>			
	<b>2011-12</b>	<b>2012-13</b>	<b>2013-14</b>
<b>Description</b>	<b>1ST INTERIM</b>	<b>PROJECTED</b>	<b>PROJECTED</b>
<b>Revenue:</b>			
Revenue Limit	56,358,354	58,791,984	59,982,672
Other Federal	300,000	300,000	300,000
Other State Revenue	4,396,548	4,533,491	4,659,757
Class Size Reduction	2,202,811	2,202,811	2,202,811
Lottery	1,301,852	1,271,479	1,271,479
Mandated Reim.	157,443		
Meas. "R"	10,685,827	10,920,915	11,204,859
Prop. Y / City of SM	5,500,000	5,500,000	5,500,000
All Other Local Income	11,433,741	11,394,041	11,556,765
Transfer In	1,560,873		
Local General Fund Contribution	(18,599,086)	(18,000,000)	(18,000,000)
<b>Total Revenues:</b>	<b>75,298,364</b>	<b>76,914,722</b>	<b>78,678,343</b>
<b>Expenditure:</b>			
Certificated Salary	42,479,433	43,116,624	43,763,373
Classified	12,083,818	12,265,075	12,449,051
Benefits	17,871,756	18,765,343	19,703,611
Supplies/Books	956,838	900,000	900,000
Other Operational Costs	6,945,490	6,600,000	6,600,000
Capital Outlay	216,011	50,000	50,000
Indirect	(827,106)	(750,000)	(750,000)
<b>Total Expenditures:</b>	<b>79,726,240</b>	<b>80,947,043</b>	<b>82,716,035</b>
<b>Increase (Decrease) Fund Balance</b>	<b>(4,427,876)</b>	<b>(4,032,321)</b>	<b>(4,037,692)</b>
Beginning	19,846,945	15,419,068	11,386,748
Fund Balance	15,419,068	11,386,748	7,349,056
Nonspendable- Revolving, Store	135,000	120,000	120,000
Assigned - Deficit Spending	4,000,000	4,000,000	-
Assigned - Middle Year Cut	3,311,210	3,311,210	3,311,210
<b>Total Available Fund Balance</b>	<b>7,972,858</b>	<b>3,955,538</b>	<b>3,917,846</b>
<b>3% Contingency Reserve</b>	<b>3,595,838</b>	<b>3,576,882</b>	<b>3,652,696</b>
<b>Unappropriated Balance</b>	<b>4,377,020</b>	<b>378,656</b>	<b>265,150</b>

**SANTA MONICA-MALIBU UNIFIED SCHOOL DISTRICT  
SUMMARY BUDGET OF MAJOR FUNDS**

**FUND 01 : UNRESTRICTED GENERAL FUND**

	<b>2011-12 ADOPTED BUDGET</b>	<b>2011-12 1ST INTERIM BUDGET</b>	<b>CHANGES</b>
<b>BEGINNING BALANCE</b>	15,657,374	19,846,945	4,189,571
<b>REVENUES</b>			-
REVENUE LIMIT	57,862,885	56,358,354	(1,504,531)
FEDERAL REVENUE	300,000	300,000	-
OTHER STATE REVENUE	7,996,766	8,058,654	61,888
LOCAL REVENUES	27,632,355	27,619,569	(12,786)
INTERFUND TRANSFER	(18,914,291)	(17,038,213)	1,876,078
<b>TOTAL REVENUES</b>	<b>74,877,715</b>	<b>75,298,364</b>	<b>420,649</b>
<b>EXPENDITURES</b>			
CERTIFICATED SALARIES	42,263,031	42,479,433	216,402
CLASSIFIED SALARIES	11,776,006	12,083,818	307,812
EMPLOYEE BENEFITS	17,797,470	17,871,756	74,286
BOOKS AND SUPPLIES	935,483	956,838	21,355
SERVICES & OTHER OPERATING	6,987,141	6,945,490	(41,651)
CAPITAL OUTLAY	56,119	216,011	159,892
OTHER OUTGO - INDIRECT COSTS	(766,447)	(827,106)	(60,659)
<b>TOTAL EXPENDITURES</b>	<b>79,048,803</b>	<b>79,726,240</b>	<b>677,437</b>
NET INCREASE (DECREASE)	(4,171,088)	(4,427,876)	
<b>PROJECTED FUND BALANCE</b>	<b>11,486,286</b>	<b>15,419,069</b>	<b>3,932,783</b>

**FUND 01 : RESTRICTED GENERAL FUND**

	<b>2011-12 ADOPTED BUDGET</b>	<b>2011-12 1ST INTERIM BUDGET</b>	<b>CHANGES</b>
<b>BEGINNING BALANCE</b>	1,640,483	3,507,164	1,866,681
<b>REVENUES</b>			
REVENUE LIMIT	1,837,046	1,837,046	-
FEDERAL REVENUE	4,397,237	5,269,515	872,278
OTHER STATE REVENUE	1,798,772	1,819,449	20,677
LOCAL REVENUES	8,839,786	10,813,322	1,973,536
INTERFUND TRANSFER	18,914,291	18,599,086	(315,205)
<b>TOTAL REVENUES</b>	<b>35,787,132</b>	<b>38,338,418</b>	<b>2,551,286</b>
<b>EXPENDITURES</b>			
CERTIFICATED SALARIES	11,644,671	12,134,518	489,847
CLASSIFIED SALARIES	9,705,270	10,686,991	981,721
EMPLOYEE BENEFITS	7,354,913	7,829,308	474,395
BOOKS AND SUPPLIES	1,418,420	3,038,753	1,620,333
SERVICES & OTHER OPERATING COSTS	5,339,976	5,615,103	275,127
CAPITAL OUTLAY	110,900	476,706	365,806
OTHER OUTGO - INDIRECT COSTS	318,095	353,879	35,784
<b>TOTAL EXPENDITURES</b>	<b>35,892,245</b>	<b>40,135,258</b>	<b>4,243,013</b>
NET INCREASE (DECREASE)	(105,113)	(1,796,840)	
<b>PROJECTED FUND BALANCE</b>	<b>1,535,370</b>	<b>1,710,324</b>	<b>174,954</b>

<b>FUND 11 : ADULT EDUCATION</b>			
	<b>2011-12 ADOPTED BUDGET</b>	<b>2011-12 1ST INTERIM BUDGET</b>	<b>CHANGES</b>
<b>BEGINNING BALANCE</b>	268,554	285,272	16,718
<b>REVENUES</b>			
FEDERAL REVENUE	93,251	92,729	(522)
OTHER STATE REVENUE	267,988	267,988	-
LOCAL REVENUES	74,947	74,947	-
<b>TOTAL REVENUES</b>	<b>436,186</b>	<b>435,664</b>	<b>(522)</b>
<b>EXPENDITURES</b>			
CERTIFICATED SALARIES	200,467	199,209	(1,258)
CLASSIFIED SALARIES	113,770	113,770	-
EMPLOYEE BENEFITS	101,490	101,577	87
BOOKS AND SUPPLIES	20,794	27,181	6,387
SERVICES & OTHER OPERATING COSTS	17,964	17,964	-
<b>TOTAL EXPENDITURES</b>	<b>454,485</b>	<b>459,701</b>	<b>5,216</b>
NET INCREASE (DECREASE)	(18,299)	(24,037)	
<b>PROJECTED FUND BALANCE</b>	<b>250,255</b>	<b>261,235</b>	<b>10,980</b>
<b>FUND 12 : CHILD DEVELOPMENT FUND</b>			
	<b>2011-12 ADOPTED BUDGET</b>	<b>2011-12 1ST INTERIM BUDGET</b>	<b>CHANGES</b>
<b>BEGINNING BALANCE</b>	84,063	118,675	34,612
<b>REVENUES</b>			
FEDERAL REVENUE	3,114,531	3,689,355	574,824
OTHER STATE REVENUE	2,639,327	2,537,243	(102,084)
LOCAL REVENUES	2,916,193	3,050,655	134,462
<b>TOTAL REVENUES</b>	<b>8,670,051</b>	<b>9,277,253</b>	<b>607,202</b>
<b>EXPENDITURES</b>			
CERTIFICATED SALARIES	2,766,746	2,919,888	153,142
CLASSIFIED SALARIES	2,469,384	2,627,033	157,649
EMPLOYEE BENEFITS	1,947,662	2,030,316	82,654
BOOKS AND SUPPLIES	246,165	236,588	(9,577)
SERVICES & OTHER OPERATING COSTS	945,232	1,116,531	171,299
CAPITAL OUTLAY	-	27,160	27,160
OTHER OUTGO - INDIRECT COSTS	294,862	319,737	24,875
<b>TOTAL EXPENDITURES</b>	<b>8,670,051</b>	<b>9,277,253</b>	<b>607,202</b>
NET INCREASE (DECREASE)	-	-	
<b>PROJECTED FUND BALANCE</b>	<b>84,063</b>	<b>118,675</b>	<b>34,612</b>

<b>FUND 13 : CAFETERIA SPECIAL FUND</b>			
	<b>2011-12 ADOPTED BUDGET</b>	<b>2011-12 1ST INTERIM BUDGET</b>	<b>CHANGES</b>
<b>BEGINNING BALANCE</b>	450,472	442,369	(8,103)
<b>REVENUES</b>	-		
FEDERAL REVENUE	1,350,000	1,350,000	-
OTHER STATE REVENUE	105,000	105,000	-
LOCAL REVENUES	1,747,754	1,747,754	-
<b>TOTAL REVENUES</b>	<b>3,202,754</b>	<b>3,202,754</b>	-
<b>EXPENDITURES</b>			
CLASSIFIED SALARIES*	1,443,716	1,466,520	22,804
EMPLOYEE BENEFITS	553,319	561,432	8,113
BOOKS AND SUPPLIES	1,504,532	1,534,532	30,000
SERVICES & OTHER OPERATING COSTS	(409,430)	(453,930)	(44,500)
CAPITAL OUTLAY	15,000	15,000	-
OTHER OUTGO - INDIRECT COSTS	153,490	153,490	-
<b>TOTAL EXPENDITURES</b>	<b>3,260,627</b>	<b>3,277,044</b>	<b>16,417</b>
NET INCREASE (DECREASE)	(57,873)	(74,290)	
<b>PROJECTED FUND BALANCE</b>	<b>392,599</b>	<b>368,079</b>	(24,520)
<b>FUND 14 : DEFERRED MAINTENANCE FUND</b>			
	<b>2011-12 ADOPTED BUDGET</b>	<b>2011-12 1ST INTERIM BUDGET</b>	<b>CHANGES</b>
<b>BEGINNING BALANCE</b>	589,463	723,471	134,008
<b>REVENUES</b>			
OTHER STATE REVENUE	-	-	-
LOCAL REVENUES	5,000	5,000	-
<b>TOTAL REVENUES</b>	<b>5,000</b>	<b>5,000</b>	-
<b>EXPENDITURES</b>			
BOOKS AND SUPPLIES	-	-	-
SERVICES & OTHER OPERATING	150,000	150,000	-
<b>TOTAL EXPENDITURES</b>	<b>150,000</b>	<b>150,000</b>	-
NET INCREASE (DECREASE)	(145,000)	(145,000)	
<b>PROJECTED FUND BALANCE</b>	<b>444,463</b>	<b>578,471</b>	<b>134,008</b>
<b>FUND 21 : BUILDING FUND</b>			
	<b>2011-12 ADOPTED BUDGET</b>	<b>2011-12 1ST INTERIM BUDGET</b>	<b>CHANGES</b>
<b>BEGINNING BALANCE</b>	90,353,987	128,568,027	38,214,040
<b>REVENUES</b>			
PROCEEDS - SALE OF BONDS	-	-	-
LOCAL REVENUES	1,000,000	1,000,000	-
<b>TOTAL REVENUES</b>	<b>1,000,000</b>	<b>1,000,000</b>	-
<b>EXPENDITURES</b>			
CLASSIFIED SALARIES	255,675	263,975	8,300
EMPLOYEE BENEFITS	127,416	127,416	-
BOOKS AND SUPPLIES	91,500	967,500	876,000
SERVICES & OTHER OPERATING COSTS	7,480,834	14,480,554	6,999,720
CAPITAL OUTLAY	45,722,300	46,454,166	731,866
<b>TOTAL EXPENDITURES</b>	<b>53,677,725</b>	<b>62,293,611</b>	<b>8,615,886</b>
NET INCREASE (DECREASE)	(52,677,725)	(61,293,611)	
<b>PROJECTED FUND BALANCE</b>	<b>37,676,262</b>	<b>67,274,416</b>	<b>29,598,154</b>

<b>FUND 25 : CAPITAL FACILITIES FUND</b>			
	<b>2011-12 ADOPTED BUDGET</b>	<b>2011-12 1ST INTERIM BUDGET</b>	<b>CHANGES</b>
<b>BEGINNING BALANCE</b>	7,512,054	7,870,597	358,543
<b>REVENUES</b>			
DEVELOPMENT FEE	700,000	700,000	-
INTEREST	70,000	70,000	-
<b>TOTAL REVENUES</b>	<b>770,000</b>	<b>770,000</b>	-
<b>EXPENDITURES</b>			
SERVICES & OTHER OPERATING OSTS	210,000	210,000	-
<b>TOTAL EXPENDITURES</b>	<b>210,000</b>	<b>210,000</b>	-
NET INCREASE (DECREASE)	560,000	560,000	
<b>PROJECTED FUND BALANCE</b>	<b>8,072,054</b>	<b>8,430,597</b>	<b>358,543</b>
<b>FUND 40 : SPECIAL RESERVE FUND FOR CAPITAL OUTLAY</b>			
	<b>2011-12 ADOPTED BUDGET</b>	<b>2011-12 1ST INTERIM BUDGET</b>	<b>CHANGES</b>
<b>BEGINNING BALANCE</b>	4,280,744	4,902,853	622,109
<b>REVENUES</b>			
REDEVELOPMENT	2,000,000	2,000,000	-
CCJUP - CITY OF SM		4,515,000	4,515,000
INTEREST	30,000	30,000	-
<b>TOTAL REVENUES</b>	<b>2,030,000</b>	<b>6,545,000</b>	<b>4,515,000</b>
<b>EXPENDITURES</b>			
SUPPLIES	6,000	14,500	8,500
SERVICES & OTHER OPERATING COSTS	309,000	3,225,000	2,916,000
CAPITAL OUTLAY	-	1,255,000	1,255,000
OTHER OUTGO - COPS PAYMENTS	1,463,049	1,463,049	-
TRANSFER TO FUND 01		1,560,873	1,560,873
<b>TOTAL EXPENDITURES</b>	<b>1,778,049</b>	<b>7,518,422</b>	<b>5,740,373</b>
NET INCREASE (DECREASE)	251,951	(973,422)	
<b>PROJECTED FUND BALANCE</b>	<b>4,532,695</b>	<b>3,929,431</b>	<b>(603,264)</b>
<b>FUND 67: SELF-INSURANCE FUND (OPEB)</b>			
	<b>2011-12 ADOPTED BUDGET</b>	<b>2011-12 1ST INTERIM BUDGET</b>	<b>CHANGES</b>
<b>BEGINNING BALANCE</b>	1,762,942	1,762,942	-
<b>REVENUES</b>			
IN-DISTRICT CONTRIBUTION	1,030,221	1,030,221	-
INTEREST	15,000	15,000	-
<b>TOTAL REVENUES</b>	<b>1,045,221</b>	<b>1,045,221</b>	-
<b>EXPENDITURES</b>			
SERVICES & OTHER OPERATING OSTS	1,030,221	1,030,221	-
<b>TOTAL EXPENDITURES</b>	<b>1,030,221</b>	<b>1,030,221</b>	-
NET INCREASE (DECREASE)	15,000	15,000	
<b>PROJECTED FUND BALANCE</b>	<b>1,777,942</b>	<b>1,777,942</b>	-



---

## **DISCUSSION ITEMS**





TO: BOARD OF EDUCATION

DISCUSSION

12/15/11

FROM: SANDRA LYON / CHIUNG-SALLY CHOU / MAUREEN BRADFORD

RE: UPDATE ON THE ADVANCED PLACEMENT PROGRAM

DISCUSSION ITEM NO. D.01

Each year, staff updates the Board of Education on the Advanced Placement Program in district high schools. Students pursuing the most rigorous preparation for college enroll in Advanced Placement courses, including English, mathematics, science, history/ social studies, foreign languages, and art. The Advanced Placement program and associated curriculum is developed by the College Board. Performance in these courses is measured through national examinations tied to the curriculum of each course. Scores range from 1 to 5, and students scoring a 3 or higher may receive college credit.

District performance and participation data from 2011 for all participating students and relevant subgroups of students will be discussed.



TO: BOARD OF EDUCATION  
FROM: SANDRA LYON / JANECE L. MAEZ  
RE: BUDGET UPDATE

DISCUSSION  
12/15/11

DISCUSSION ITEM NO. D.02

In order to begin the planning and decision making process that will ultimately result in the 2012-13 Budget for the district, staff has been preparing presentations to inform Board members and the public about the budget process. These presentations are intended to provide details of what makes up a school district budget and specifically budget information as it relates to Santa Monica-Malibu Unified School District.

In this first presentation, staff will focus on General Fund revenues. There will be an explanation of the Prop 98 process and how the majority of our revenue is generated. Staff will also describe the other sources of revenue that the district receives to include Federal, State and Local dollars. Staff will describe how many of the revenue sources are designated for specific purposes and how the district is spending the funds as designated.

In a second presentation, scheduled for January, staff will go into detail about district expenditures. We will explain the kinds of expenditures the district is making within the General Fund. The presentation will describe how those expenditures are distributed across the district; how special programs are funded; and the amount of allocations made to school sites.

By the end of January, staff expects to determine the magnitude of the current budget issues for the district and outline possible actions for Board consideration. The uncertainty of the State budget makes projecting budgets in a school district very difficult. What we do know is that we are currently spending more than we receive in any one year. As the district uses reserve or fund balances to limit the impact of budget reductions – it cannot be considered a long range plan for fiscal viability. The assumptions we use to prepare our multi-year budget projections are important to understand as we develop the long term fiscal plan for the district.