

For a Listing of Upcoming Board Meetings See Page vi of this Table of Contents
Santa Monica-Malibu Unified School District
Board of Education Meeting
MINUTES

December 10, 2009

A regular meeting of the Santa Monica-Malibu Unified School District Board of Education was held on Thursday, December 10, 2009, in the District Administrative Offices: 1651 16th Street, Santa Monica, CA. The Board of Education called the meeting to order at 4:35 p.m. in the Board Conference Room at the District Offices. At 4:36 p.m., the Board of Education moved to Closed Session regarding the items listed below. The public meeting reconvened at 6:08 p.m. in the Board Room.

I. CALL TO ORDER

- A. Roll Call
- B. Pledge of Allegiance

II. PUBLIC COMMENTS FOR CLOSED SESSION ITEMS ONLY

III. CLOSED SESSION (90)

- Receipt of recommendation for amendment of the proposed settlement cases pursuant to GC §54956.9 (b), as cited in the Brown Act (5):
DN-1026-08/09
- Conference with Superintendent regarding 2008-2009 Strategies for Negotiations with S.E.I.U. pursuant to GC §54957.6 as cited in the Brown Act. (35)
- Conference with Superintendent regarding 2008-2009 Strategies for Negotiations with S.M.M.C.T.A. pursuant to GC §54957.6 as cited in the Brown Act. (35)
- Closed Session, Superintendent's performance evaluation pursuant to GC §54954.5 as cited in the Brown Act. (15)

6:09 pm

IV. BOARD OF EDUCATION – COMMENDATIONS / RECOGNITIONS (10)

- **Outgoing Board President and Vice President – Ralph Mechur and Barry Snell**

Mr. Cuneo thanked Mr. Mechur and Mr. Snell for their hard work and dedication this past year. He presented them with plaques. Mr. Snell thanked his fellow board members as well as senior cabinet and Sarah Wahrenbrock. Mr. Allen thanked Mr. Mechur for his leadership and advice. Ms. Leon-Vazquez and Ms. Pye thanked them both for their time and energy. Mr. de la Torre thanked them for creating a culture of collaboration. Mr. Mechur said the president and vice president can't do their jobs without the help of the other board members, senior staff, and school communities.

6:14 pm

V. APPROVAL OF THE AGENDA

It was moved by Mr. Allen, seconded by Ms. Pye, and voted 6/0 (Dr. Escarce was absent) to approve the agenda. The board agreed to move Item Nos. A.13, A.14, A.15, and A.16 to Major from Consent and to move Section XV to follow the Superintendent's Report.

6:18 pm

VI. APPROVAL OF MINUTES

November 5, 2009
November 19, 2009

CONSENT CALENDAR (5)

Consent agenda items are considered routine, as agreed by the President, Vice President and Superintendent, requiring no discussion, and are normally all approved at one time by the Board of Education. However, members of the Board of Education, staff, or the public may request an item be removed from the consent agenda for clarification and/or discussion. Consideration will occur during Section XI (Major Items).

Curriculum and Instruction

- A.01 Approval of Independent Contractors..... 2
- A.02 Overnight Field Trip(s) – 2009-2010..... 3
- A.03 Conference and Travel Approval/Ratification 4-5
- A.04 Textbooks..... 6
- A.05 Supplemental Textbooks 7
- A.06 Agreement with the State Department of Education to Accept Funds
for the Child Development Program for Fiscal Years 2009-2010
through 2011-2012 8
- A.07 Head Start Collaboration with the Los Angeles County Office of Education 9
- A.08 Approval of Fee Increase for the Preschool Programs for Fiscal Year
2010-2011 10
- A.09 Approval of Special Education Contracts – 2009-2010 11-14

Business and Fiscal

- A.10 Award of Purchase Orders – 2009-2010..... 15-15e
- A.11 Acceptance of Gifts – 2009-2010 16-20
- A.12 Contract Amendment #3 for Representative to California Coastal
Commission and Field Lighting – Malibu High School – Culbertson &
Associates, LLC..... 21
- A.13 Emergency/Temporary Parcel Tax and Possible Capital Bond
Feasibility Committee Budget Request 22

8:41 pm

Measure “BB”

- A.14 Contract Amendment #15 for Removal Action Workplan Implementation
Oversight – Edison Language Academy – LFR – Measure BB..... 23
- A.15 Contract Amendment #16 for Removal Action Workplan Implementation,
Bid Assist and Oversight – John Adams Middle School –
LFR – Measure BB 24
- A.16 Contract Amendment #17 for Removal Action Workplan Implementation,
Bid Assist and Oversight – Lincoln Middle School – LFR –
Measure BB 25
- A.17 Contract Amendment #6 for Environmental Management Services –
Edison Language Academy Project – ATC Associates – Measure BB 26
- A.18 Contract Amendment #26 for Increase Scope for Topographic Surveys
and Digital Mapping for Additional Survey Work – Edison Language
Academy – Psomas – Measure BB..... 27-28
- A.19 Contract Amendment #9 for Geotechnical Investigation & Report
Services – Olympic High School Campus Improvement Project –
Leighton Consulting – Measure BB 29
- A.20 Contract Amendment #2 for Additional Data and Telecom Consulting
Services – Districtwide – Sparky Data and Telecom – Measure BB 30
- A.21 Contract Amendment #19 for Additional Architectural Services for
Upgrade of Fire Protection Systems – District Office Data Center –
WWCOT – Measure BB 31-32

6:33 pm

Personnel

- A.22 Certificated Personnel – Elections, Separations 33-37
- A.23 Classified Personnel – Merit..... 38-41
- A.24 Classified Personnel – Non-Merit..... 42

General

A.25 Adopt Policy 4158 / 4258 / 4358 – Employee Security.....43-50

6:57 pm VIII.

PUBLIC COMMENTS

Public Comments is the time when members of the audience may address the Board of Education on items not scheduled on the meeting’s agenda. All speakers are limited to three (3) minutes. When there are a large number of speakers, the Board may reduce the allotted time to two (2) minutes per speaker. The Brown Act (Government Code) states that Board members may not engage in discussion of issues raised during “VIII. Public Comments” except to ask clarifying questions, make a brief announcement, make a brief report on his or her own activities, or to refer the matter to staff. This Public Comment section is limited to 20 minutes. If the number of persons wishing to address the Board of Education exceeds the time limit, additional time will be provided in Section **XVI. CONTINUATION OF PUBLIC COMMENTS.**

- *Isis Enriquez, former student board member from Olympic High School, thanked the board for her experience last year. She is currently a political science major at SMC and plans to transfer to Berkley.*
- *Ken Harris, an SMMUSD teacher, said he did not support teachers being asked to remove small appliances from their classrooms as a means of saving money.*
- *Richard Bencivengo, a community member, spoke in support of the equity fund.*

IX. COMMUNICATIONS (40)

The Communications section provides an opportunity for the Board of Education to hear reports from the individuals or Committee representative listed below. All reports are limited to 5 minutes or less. However, if more time is necessary, or if a report will not be presented, please notify the Board secretary eight workdays prior to the date of the meeting.

A. Student Board Member Reports (15)

7:14 pm

Pyoung Kim – Santa Monica High School

Student Board Member Kim reported that seniors applying to the UC and CSU schools have submitted their applications. Seniors also took the SAT and SAT subject tests on December 5. The end of the twelve-week grade period was on December 4, which means there are six weeks left in the semester. Finals will be held at the end of January.

A fundraiser was held for Invisible Children, during which a few thousand dollars were raised. The annual canned food drive, which runs from December 7 through the 21, has challenged each student to bring two cans of food, equaling 6,000 cans total. The Red Cross blood drive will be on December 15. Adults are encouraged to donate. BSU and La Sociedad are holding a toy drive to benefit elementary students. The science classes, under the direction of Ms. Chacon, are holding an electronics recycling challenge competition.

The Samohi orchestra concert will be held on December 15, and the choir concert will be on December 17. The school will be starting a student recognition program to honor students and teachers. The school is looking forward to the holidays. Ms. Kim wished the board members a wonderful holiday season.

Mr. Allen asked Ms. Kim about the Equity Fund discussion at the site governance meeting. Ms. Kim said that school leadership has discussed the effectiveness of programs funded by equity funds. Ms. Leon-Vazquez asked about the allocation of equity funds and the number of students taking a class funded by this money. Dr. Chou approximated forty-five students. Dr. Escarce asked for the number of students affected.

Mr. de la Torre asked if ASB is helping Racial Harmony to find funds to make up the difference in deficit funds.

7:09 pm

Roya Sahafi – Malibu High School

Student Board Member Sahafi reported that the ASB is currently working on a ping pong tournament. They are planning games for Wednesday and Thursday next week. Tomorrow is Pajama Day. Students who wear pajamas will be rewarded with food and hot cocoa. Next week is the annual UCLA blood drive.

Today, the site governance council met to discuss the homework policy, students' rights, and fundraising. The Malibu Youth Commission will be installing an ice skating rink in Malibu. On December 17, the choral class will be hosting a Madrigal dinner. Today, the world issues teacher had Salam al-Mariati, Executive Director of the Muslim Public Affairs Council for Los Angeles, guest lecture about being a Muslim American. Students had an opportunity to ask him questions regarding Islam and the Middle East and the war.

Mr. Allen asked about the student discussion regarding the homework policy. Ms. Sahafi said Dr. Kelly handed out the district policy and site plan. They will be reviewing both documents at their next meeting.

7:02 pm

Emily Yeskel – Olympic High School

Student Board Member Yeskel reported that Olympic teacher Mr. Suminski took his U.S. history students on a field trip to the California Heritage Museum on December 2 to see the exhibit on the history of skateboarding. The field trip provided a meaningful way for students to relate to the lesson.

The Malibu counselors visited campus on December 3. Ms. Yeskel presented them with information regarding Olympic and led them on a tour of the campus, reminding them of Olympic's uniqueness. The purpose of the visit was to encourage the counselors to send Malibu students who are behind in credits to the continuation high school earlier on in their high school career in order to reap the benefits of Olympic sooner.

On December 4, CBS news correspondent Terry McCarthy addressed Olympic students regarding his coverage of the swine flu and the war in the Middle East. He answered questions about what it's like to be a news correspondent. The campus also heard from Tari Tooke of SMC's Pico Partnership, who talked about their program and the benefits of attending a community college.

The second parent meeting of the year was held on December 9. Santa Monica Police Department Juvenile Investigator Rene Talbott and School Resource Officer Edgar Navarro addressed the parents and a few students on cyber bullying and its effects, as well as preventative steps that can be taken. Earlier that day, officers from the police department ran a hands-on program illustrating the effects of driving under the influence. Investigator Rob Dawson showed students videos and photographs and shared stories of accidents caused by DUIs. Students participate in an interactive lesson during which they wore goggles that simulated vision with a blood alcohol level of .08 while driving an electric vehicle through a course set up in the parking lot. The program gave students a new perspective on driving under the influence. The school thanked the officers for donating their time.

On December 16, students in the Venice arts class will be going on a field trip to the Getty Museum to see the Irving Penn exhibit. The PAL programs are going strong, thanks to the help of Robert Temple, Coach Rudy, Carla, Joanna, and all the other wonderful people involved at Virginia Park. Olympic's student council has started up again and is under the direction of Mr. Tarbell. They are currently holding a school wide car drive and will be hosting a BBQ on December 18. The student council is also working to find a new mascot for the school. The health class is currently participating in Common Ground's six-week-long Peer Education Program. Common Ground, a comprehensive HIV agency in Santa Monica, is training the participating students to facilitate discussions regarding HIV prevention with other students.

7:28 pm

B. SMMCTA Update – Mr. Harry Keiley (5)

Mr. Keiley wished the board and everyone a happy and healthy holiday season. He recognized City Councilman Holbrook, who was in the audience. He commented on the difficult economic times during this recession and said everyone is being affected, either directly or indirectly. He hopes that in the days ahead, the union can work with the district to find additional resources.

7:34 pm

C. S.E.I.U. Update – Ms. Keryl Cartee-McNeely (5)

Ms. Cartee-McNeely thanked Mr. Mechur and Mr. Snell for their leadership, dedication, and everything they have done to support the students in this district. She wished everyone a very blessed and safe holiday season.

7:34 pm

D. PTA Council – Shari Davis (5)

Ms. Davis reported that this week's PTA Council holiday breakfast allowed them to reflect on the many contributions of PTA members. She thanked Malibu High School students who performed musical numbers at the breakfast. She thanked the board members, principals, and administrators who attended. The PTA expressed their appreciation for City Manager Lamont Ewell, who is retiring.

In the spirit of December, a month of celebrations and giving, the site PTAs are assisting district families that are less fortunate. This is also a month during which PTA Council braces itself for the next six months and the budget. At the state level, PTA is actively advocating for state Race for the Top federal funds. January will be busy as the council will launch into the action steps for the PTA priorities. Ms. Davis concluded her report by quoting Alice McClellan Birny, co-founder of the national PTA in the 1800s: "Let us have no more croaking as to what cannot be done; let us see what can be done, and above all see that it is done."

7:39 pm

E. Financial Oversight Committee – Cynthia Torres (5)

Ms. Torres reported that the FOC is keeping a close eye on the district's budgetary outlook. The most recent data shows that without further action, there will be a \$10 million deficit this school year and \$12 million next school year. The First Interim Report, which shows the district's financial position as of October 31, is up for approval tonight. The FOC believes it is important the board approve this report. It shows a positive certification due to the fact that it reflects budget cuts. The difficult task over the next few months will be to craft a plan with cuts and revenue enhancements. At its December meeting last week, the FOC discussed expenditure reduction possibilities. Ms. Torres expressed the FOC's support of the Parcel Tax Feasibility Committee's work. A subcommittee of the FOC is pressing forward on revenue enhancement options and will be meeting in the near

future with district staff. On behalf of FOC, Ms. Torres wished everyone a relaxing and enjoyable holiday season.

Dr. Escarce clarified that the \$7 million of revenue enhancement options reflects the upper amount and it would take years to yield those amounts.

7:45 pm

F. Emergency/Temporary Parcel Tax Feasibility Committee – Neil Carrey (5)

Mr. Carrey reported that the committee is requesting additional funds to conduct further polling studies. In these complicated economic times, examining the feasibility of a parcel tax is the most complex it has ever been. The committee believes it is important to come back to the board with a confident and intelligent recommendation. There are two crucial time periods to keep in mind: 120 days prior to the desired election date, Los Angeles County needs to know that a district wants to hold an election; 88 days prior to the election date, the county must receive the detailed ballot measure from a district. It was determined that the best time to have a ballot measure would be during the last half of May. The committee will be coming back to the board on January 14 with recommendations. If the committee recommends to move forward with an emergency parcel tax ballot measure, the board could decide at that meeting to notify the county the next day on order to meet the deadlines. The committee will be continuing its work during the holidays.

Mr. Snell asked about a second polling timetable. Mr. Carrey said the polling would be conducted this weekend. Rochelle Fanali said the same sample would be targeted, but the questions would probe deeper.

7:55 pm

X. SUPERINTENDENT'S REPORT (5)

Superintendent Cuneo reported that as a result of the budget study session on November 21, the district will be looking at energy management across the district. All employees at all worksites, including the district office, are being asked to remove personal microwave ovens, refrigerators, etc. This could result in a savings of as much as \$200,000 annually. The Superintendent and Assistant Superintendents are in the process of scheduling meetings with all SMMUSD to discuss and answer questions about the budget. They are also scheduling meetings with the site PTAs and site councils in order to provide community with more information regarding the budget and how they can participate.

Mr. Cuneo reminded the board members of the memorial services for teacher Don Hedrick, which will be held on Saturday.

The Strategic Plan Team is being formed. The team will assist and advise the Superintendent on the entire process of developing a new strategic plan. The middle school initiative had its second meeting this week. The group will be expanded after the first of the year.

The district has ten new National Board Certified teachers, for a total of sixty teachers districtwide. There will be a reception for these newly certified teachers at the January board meeting.

Megan Kilroy, a senior at Samohi, is being awarded a TeenNick HALO award for her environmental work and leadership. The awards ceremony will be televised tomorrow evening on Teen Nick at 5:00pm PST. Ms. Kilroy is being awarded \$10,000 to go towards her college education and \$10,000 to help support her work with Team Marine at Samohi. She is one of four teenagers in the U.S. being recognized with this award. The board will invite her to be recognized at its January meeting.

Mr. Cuneo wished the board, SMMUSD employees, and the community a happy holidays. He said that after the first of year, it will be time to roll up our sleeves and deal with difficult budgetary decisions.

MAJOR and DISCUSSION Items

As a general rule, items under MAJOR and DISCUSSION will be listed in order of importance as determined by the President, Vice President and Superintendent. Individual Board members may move to request a change in the order prior to consideration of any Major item. The Board may also move any of these items out of order to be heard immediately following PUBLIC COMMENTS if it appears that there is special interest by the public or as a courtesy to staff members making presentations to the Board.

XI. MAJOR ITEMS (155)

These items are considered to be of major interest and/or importance and are presented for **ACTION (A)** or **INFORMATION (I)** at this time. Many have been reviewed by the Board at a previous meeting under the Discussion Items section of the agenda.

8:45 pm	A.26	Election of Board of Education Officers (15)	51
8:49 pm	A.27	Certification of Authorized Signatures (5).....	52-52b
8:50 pm	A.28	Election of Annual Representative to the Los Angeles County School Trustees Association (LACSTA) for 2009-2010 (5).....	53
8:53 pm	A.29	Election of Voting Representative: Los Angeles County Committee on School District Organization (5).....	54
8:54 pm	A.30	High School Course Approval (10).....	55-56
9:25 pm	A.31	Establish Position – Administrative Assistant, Measure BB/Facilities Improvement (10)	57
9:26 pm	A.32	Appointment of Personnel Commissioner (10)..... <i>Suzanne Kim</i>	58
10:40 pm	A.33	Approval of Measure BB Scope Adjustments for Washington Child Development Services Project (20)	59
10:02 pm	A.34	Approve DAC Charges for 2009-10 (30)	61
10:27 pm	A.35	Approval of 2009-10 First Interim Report (45).....	62-75

XII. DISCUSSION ITEMS (20)

These items are submitted for information (FIRST READING) and discussion. Action will generally be considered at the next regularly scheduled meeting of the Board.

10:43 pm	D.01	Intensive Intervention Summer School Program (IISS) 2010-11 (20)	76
----------	------	--	----

XIII. INFORMATIONAL ITEMS (0)

XIV. BOARD MEMBER ITEMS (0)

These items are submitted by individual Board members for information or discussion, as per Board Policy 8320(b).

XV. REQUESTS BY MEMBERS OF THE PUBLIC OR DISTRICT ADVISORY COMMITTEES TO ADDRESS THE BOARD OF EDUCATION

These items are submitted by members of the public to address the Board of Education on a matter within the jurisdiction of the Board, as per Board Policy 8320©. Requests must be submitted to the Superintendent in writing ten days before the Board meeting or prior to agenda planning, in accordance with the established agenda planning schedule, whichever is less. The written request will not exceed 500 words and will include, as an attachment, brief background information and the reason for the request.

- 7:59 pm
 - **Jean Sedillos and Bob Holbrook regarding the Equity Fund**
Bob Holbrook, Santa Monica City Council Member, addressed the board regarding contributions of the Samohi Band to the Equity Fund. His handout can be found under Attachments at the end of these minutes. Jean Sedillos, a member of the community, summarized the handout. Mr. de la Torre requested that an action item returning the funds to the Samohi Band be placed on a future agenda. Ms. Leon-Vazquez reminded the board that the

present parent performing arts leadership at the site had gone over the policy/AR with the district administration and is in agreement with the accounting. Ms. Pye was not in favor of scheduling this as a future discussion item. The board did not vote to agendaize the item for discussion at a future meeting. The board agreed the policy would be discussed early in the year.

XVI. CONTINUATION OF PUBLIC COMMENTS

A continuation of Section VIII, as needed. (If the number of persons wishing to address the Board of Education exceeds the time limit in section VIII, additional time will be provided in Section XVI, CONTINUATION OF PUBLIC COMMENTS.)

XVII. BOARD MEMBER COMMENTS

Board Member Comments is the section where a Board member may make a brief announcement or make a brief report on his or her own activities relative to Board business. There can be no discussion under "BOARD MEMBER COMMENTS."

XVIII. FUTURE AGENDA ITEMS

Items for future consideration will be listed with the projected date of consideration. The Board of Education will be given any backup information available at this time.

XIV. CLOSED SESSION

The Board of Education will, if appropriate, adjourn to CLOSED SESSION to complete discussion on items listed for CLOSED SESSION following the regular business meeting.

XX. ADJOURNMENT

It was moved by Dr. Escarce, seconded by Mr. Allen, and voted 5/0 (Ms. Leon-Vazquez and Mr. de la Torre were absent) to adjourn the meeting at 11:24 p.m. The next regularly scheduled meeting will be held on **Thursday, January 14, 2010**, at 5:00 p.m. at the District Offices: 1651 16th Street, Santa Monica, CA.

Approved: _____

President

Superintendent

**Meetings held at Santa Monica City Hall are broadcast live – City TV2, Cable Channel 16.
Meetings held at the District Office and in Malibu are taped and rebroadcast
in Santa Monica on CityTV2, Cable Channel 20 – Check TV listing.
Meetings are rebroadcast in Malibu on Government Access Ch. 3 every Saturday at 8pm.**

SMMUSD Board of Education Meeting Schedule 2009-2010

Closed Session begins at 4:00pm
Public Meetings begin at 5:30pm

July through December 2009					
Month	1 st Thursday	2 nd Thursday	3 rd Thursday	4 th Thursday	Special Note:
July	7/1* DO		7/16 DO		*7/1: Special Meeting
August	8/4* DO		8/20 8/19 DO		*8/4: Special Closed Session
September	9/3 DO		9/17 DO	9/21* DO	First day of school: 9/9 *9/21: Special Closed Session
October	10/1 M		10/15 DO	10/26* DO	*10/26: Special Meeting
November	11/5 M		11/19 DO	11/21* DO	*11/21: Special Meeting Thanksgiving: 11/26-27
December		12/10 DO		winter break	
December 20 – 31: Winter Break					
January through June 2010					
January 1 – 2: Winter Break					
January		1/14 DO			
February	2/4 M		2/18 DO		
March	3/4 DO		3/18 DO		*Stairway: 3/25 & 3/26
March 29 – April 9: Spring Break					
April	spring break	spring break		4/22 DO	
May	5/6 M		5/20 DO		
June	6/3 DO		6/17 DO		Last day of school: 6/25

District Office (DO): 1651 16th Street, Santa Monica.
 Malibu City Council Chambers (M): 23815 Stuart Ranch Road, Malibu, CA

**Santa Monica-Malibu Unified School District
Board of Education
December 10, 2009**

I. CALL TO ORDER

A. Roll Call

Ralph Mechur – President
Barry Snell – Vice President
Ben Allen
Oscar de la Torre – *left at 10:30pm*
Jose Escarce – *arrived at 6:45pm*
Maria Leon-Vazquez – *left at 10:35pm*
Kelly Pye

4:35pm
4:36pm
6:08pm

Student Board Members

Pyoung Kim
Roya Sahafi
Emily Yeskel

B. Pledge of Allegiance

Led by Mr. Snell

II. CLOSED SESSION

President Mechur reported out of Closed Session:

- *Amend settlement agreement in case No. DN-1026-08/09*

1. Case No. DN-1026-08/09

The substance of the Agreement was as follows:

- a) *There was no financial change to this case.*

It was moved by Ms. Leon-Vazquez, seconded by Mr. Snell, and vote 6/0 (Dr. Escarce was absent) to amend this settlement case.

TO: BOARD OF EDUCATION
FROM: TIM CUNEO
RE: APPROVAL OF MINUTES

ACTION
12/10/09

RECOMMENDATION NO. A.01

It is recommended that the Board of Education approve the following Minutes:

November 5, 2009
November 19, 2009

November 5, 2009, Minutes

MOTION MADE BY: Ms. Leon-Vazquez
SECONDED BY: Mr. de la Torre
STUDENT ADVISORY VOTE: Aye
AYES: All (6) (Dr. Escarce was absent)
NOES: None (0)

November 19, 2009, Minutes

MOTION MADE BY: Ms. Leon-Vazquez
SECONDED BY: Mr. de la Torre
STUDENT ADVISORY VOTE: Aye
AYES: Four (4) (Mr. Mechur, Mr. Allen, Ms. Pye, Mr. de la Torre) (Dr. Escarce was absent)
NOES: None (0)
ABSTAIN: Two (2) (Mr. Snell and Ms. Leon-Vazquez)

CONSENT ITEMS

TO: BOARD OF EDUCATION

ACTION/CONSENT

12/10/09

FROM: TIM CUNEO / CHIUNG-SALLY CHOU / MAUREEN BRADFORD

RE: APPROVAL OF INDEPENDENT CONTRACTORS

RECOMMENDATION NO. A.01

It is recommended that the Board of Education enter into an agreement with the following Independent Contractors. These contracts are included in the 2009-2010 budget.

Contractor/ Contract Dates	Description	Site	Funding (Measure BB)
NONE			

Contractor/ Contract Dates	Description	Site	Funding
Jeff Sterrett 9/01/09 to 11/21/09 Not to exceed: \$2,500	To compose drills for Marching Band performances	Santa Monica High	01-90140-0-11100-41000-5802-015-4150
Ojai Foundation/Center for Council Training 9/08/09 to 6/30/10 Not to exceed: \$14,950	Will provide interactive groups counseling sessions for 8 th graders.	Malibu High	01-90141-0-11100-10000-5802-010-4100
Moo Moo Music 11/01/09 to 6/23/10 Not to exceed: \$6,500	To provide music to K-2 students	John Muir	01-90150-0-11100-10000-5802-005-4050
STAR, Inc. 1/13/10 to 4/23/10 Not to exceed: \$8,700	Enrichment classes for all 4 th and 5 th GATE students after school – geography computer design, civics, neuroscience, topography	Franklin	01-901210-011100-10000-5802-002-4020
CCM, Inc. <u>Amend Contract Dates:</u> 12/1/09 to 1/29/10 <u>Additional Amount:</u> \$35,970.20 Total 2009-10 amount: \$125,895.70	Evaluation and Review of M/O Department	District	01-81500-0-00000-81100-5802-061-2802

Ms. Maez clarified that the extension to the CCM contract was due in part to the Director of M&O position not yet being filled. Ms. Pye requested to see a report regarding the evaluation and review of the M & O Department from CCM, Inc.

MOTION MADE BY: Mr. Snell
SECONDED BY: Mr. Allen
STUDENT ADVISORY VOTE: Aye
AYES: All (6) (Dr. Escarce was absent)
NOES: None (0)

TO: BOARD OF EDUCATION

ACTION/CONSENT

12/10/09

FROM: TIM CUNEO / CHIUNG-SALLY CHOU / MAUREEN BRADFORD

RE: OVERNIGHT FIELD TRIP(S) 2009-2010

RECOMMENDATION NO. A.02

It is recommended that the Board of Education approve the special field trip(s) listed below for students for the 2009-2010 school year. No child will be denied due to financial hardship.

School Grade # students	Destination Dates of Trip	Principal/Teacher	Cost Funding Source	Subject	Purpose Of Field Trip
Samohi 9-12 12	Virtual Enterprise Trade Fair & Business Plan Competition, Bakersfield, CA 12/1/09–12/3/09	H. Pedroza/ T. Jones/ Mary Kay McCray	\$150 per student by fundraising	ROP Virtual Enterprise Class	To attend a business plan competition and trade show to promote students on-line virtual business. They will compete with 150 other school businesses in salesmanship, best presentation of a booth, web site design, business plan and related categories.
McKinley 4 65	Nature Bridge Camping – Circle X 3/15/10–3/17/10	I. Gonzalez/ D. Talbott/ H. Cervantes	\$100 per student by parent donation & fundraising	Science	Annual science enrichment supporting the curriculum of the 4 th grade science. Hands-on outdoor classroom experience, leadership and team building skills.
McKinley 5 75	Catalina Island 3/1/10–3/3/10	I. Gonzalez/ L. Daruty/ T. Macon	\$ 229.13 per student by parent donation & fundraising	Science	Annual science enrichment supporting the curriculum of the 5 th grade science. Hands-on outdoor classroom experience, leadership and team building skills.
Samohi 8-12 16	Disneyworld, Orlando, FL 2/11/10–2/16/09	H. Pedroza/ A. Meadors/ R. Miller	\$850 per student by parent donation & fundraising	PE (Pep squad)	Students will compete in the UCA National Cheer Championship.
Samohi 8-12 18	Phoenix, AZ Nike Basketball Tournament 12/17/09–12/23/09	H. Pedroza/ M. Verdugo/ M. Silvestri	\$300 per student by parent donation & fundraising	PE	Girls Basketball Team will compete in a highly competitive nationally recognized basketball tournament.
Samohi 8-12 15	DECA Business & Marketing Competition in Ontario, CA 1/22/10–1/24/10	H. Pedroza/ M. Shafiey	\$105 per student by parent donation & fundraising	ROP	DECA (Distributive Education Clubs of America) business/marketing competition.

MOTION MADE BY: Mr. Snell
 SECONDED BY: Mr. Allen
 STUDENT ADVISORY VOTE: Aye
 AYES: All (6) (Dr. Escarce was absent)
 NOES: None (0)

TO: BOARD OF EDUCATION

ACTION/CONSENT

12/10/09

FROM: TIM CUNEO / JANECE L. MAEZ / PAT HO

RE: CONFERENCE AND TRAVEL APPROVAL/RATIFICATION

RECOMMENDATION NO. A.03

It is recommended that the Board of Education approve/ratify the following Requests for Absence on District Business (Conference and Travel) forms.

COMMENTS: Entries are alphabetical, by employee last name. In addition to the employee's name and site/location, each entry contains the following information: name, location and date (s) of the conference, complete account code, fund and program names, and the total estimated cost as provided by the site administrator. The average cost for substitute teachers is \$130/day. This figure is furnished for informational purposes and does not reflect the actual amount paid for an individual substitute.)

<u>AME</u> <u>SITE</u> Account Number Fund – Resource Number	CONFERENCE NAME LOCATION DATE (S)	COST ESTIMATE
<u>DREIER, Holly</u> Santa Monica High 01-00000-0-11100-10000-5220-015-4150 General Fund- Function: Instruction	CMC-South Palm Springs, CA November 7, 2009	\$145
<u>HERNANDEZ, Rafael</u> Malibu High 01-00010-0-11100-10000-5220-010-4100 General Fund- Resource: Tier III	Foreign Language Professional Development Seminars Los Angeles, CA 12/12/09, 1/23/2010, 2/20/2010, 3/20/2010, 4/24/2010	\$695
<u>MAEZ, Jan</u> Business Services 01-00000-0-00000-73000-5220-050-1500 General Fund- Function: Business Services	SSC's Governor's Budget Workshop Long Beach, CA January 13, 2010	\$185
<u>SINFIELD, Deanna</u> Franklin Elementary 01-56400-0-00000-39000-5220-041-1400 General Fund- Resource: Medi-Cal	Non-Violent Crisis Intervention Los Angeles, CA December 1 – 3, 2009	\$730

Adjustments (Preapproved expenses 10% in excess of approved costs that must be approved by Board/Changes in Personnel Attendance)		
NONE		

Group Conference and Travel: In-State		
<i>* a complete list of conference participants is on file in the Department of Fiscal Services</i>		
DRESHER, Pam +3 Additional Staff Rogers Elementary 01-30100-0-11100-10000-5220-006-4060 General Fund- Resource: Title I	California Science Teachers Association Palm Springs, CA October 23 – 24, 2009	\$1, 128 Total +2 Subs
HARRIS, Peggy SERRATORE, Rosa Ed Services 01-40350-0-11100-21000-5220-035-1300 General Fund- Resource: Title II	Enhancing African American Student Success K-12 Mathematics Lynwood, CA 12/8/09, 12/11/09, 3/18/10 and 5/13/10	\$336 Total

Out-of-State Conferences: Individual		
NONE		

Out-of-State Conferences: Group		
NONE		

MOTION MADE BY: Mr. Snell
 SECONDED BY: Mr. Allen
 STUDENT ADVISORY VOTE: Aye
 AYES: All (6) (Dr. Escarce was absent)
 NOES: None (0)

TO: BOARD OF EDUCATION

ACTION/CONSENT

12/10/09

FROM: TIM CUNEO / CHIUNG-SALLY CHOU / PEGGY HARRIS

RE: TEXTBOOKS

RECOMMENDATION NO. A.04

It is recommended that the textbooks listed below be adopted for the Santa Monica-Malibu Unified School District.

COMMENT: In accordance with the Board of Education policy, the textbooks(s) listed below have been on public display for the past two weeks in the Educational Services Department at 1638 – 17th Street, Santa Monica, CA 90404

Inside Language, Literacy and Content, by National Geographic/Hampton Brown Publishing for grades 6 – 8, ELD classes in District. Adoption requested by Peggy Harris.

Tonal Harmony, With An Introduction To Twentieth-Century Music, by Stepan Kostka and Dorothy Payne for grades 11 & 12 Music, AP Theory at Malibu High School. Adopted requested by John Kibler.

MOTION MADE BY: Mr. Snell

SECONDED BY: Mr. Allen

STUDENT ADVISORY VOTE: Aye

AYES: All (6) (Dr. Escarce was absent)

NOES: None (0)

TO: BOARD OF EDUCATION

ACTION/CONSENT

12/10/09

FROM: TIM CUNEO / CHIUNG-SALLY CHOU / PEGGY HARRIS

RE: SUPPLEMENTAL TEXTBOOKS

RECOMMENDATION NO. A.05

It is recommended that the textbooks listed below be adopted for the Santa Monica-Malibu Unified School District.

COMMENT: In accordance with the Board of Education policy, the textbooks(s) listed below have been on public display for the past two weeks in the Educational Services Department at 1638 – 17th Street, Santa Monica, CA 90404

Web Literacy for Educations, by Alan November for grade 6, Lincoln Middle School, Tech 1. Adoption requested by Eric Marcos

Macario, by B. Traven, Spanish text for grade 8 Spanish Language Arts & Spanish at John Adams Middle School. Adoption requested by Mary Kushion.

MOTION MADE BY: Mr. Snell

SECONDED BY: Mr. Allen

STUDENT ADVISORY VOTE: Aye

AYES: All (6) (Dr. Escarce was absent)

NOES: None (0)

TO: BOARD OF EDUCATION

ACTION/CONSENT

12/10/09

FROM: TIM CUNEO / MICHAEL D. MATTHEWS / JUDY ABDO

RE: AGREEMENT WITH THE STATE DEPARTMENT OF EDUCATION TO ACCEPT FUNDS FOR THE CHILD DEVELOPMENT PROGRAM FOR FISCAL YEARS 2009-2010 THROUGH 2011-2012

RECOMMENDATION NO. A.06

It is recommended that the Board of Education accept the contract with the State Department of Education, Child Development Division effective July 01, 2009, through June 30, 2012. This agreement CRPM-9065 is to be executed between the Superintendent of Public Instruction, State Department of Education, and the Santa Monica-Malibu Unified School District, wherein the State agrees to pay the Santa Monica-Malibu Unified School District Child Development Fund/CDC an amount not to exceed \$64,698.00.

Funding Information

Source: Child Development Fund – Restricted
Currently Budgeted: No
Account Number: 12-50370-0-00000-00000-8290-000-0000
Description: Child Development Center Apportionment - CDC

COMMENT: This one-time-only Facilities Renovation and Repair fund will provide assistance in maintaining healthy, safe, and accessible environments for children in California Department of Education subsidized child care and development programs.

MOTION MADE BY: Mr. Snell
SECONDED BY: Mr. Allen
STUDENT ADVISORY VOTE: Aye
AYES: All (6) (Dr. Escarce was absent)
NOES: None (0)

TO: BOARD OF EDUCATION

ACTION/CONSENT

12/10/09

FROM: TIM CUNEO / MICHAEL D. MATTHEWS / JUDY ABDO

RE: HEAD START COLLABORATION WITH THE LOS ANGELES COUNTY OFFICE OF EDUCATION

RECOMMENDATION NO. A.07

It is recommended that the Board of Education approve the refunding application and budget for fiscal year 2010-2011 with Los Angeles County Office of Education (LACOE) for the purpose of providing Head Start services to eligible families effective July 1, 2010, through June 30, 2011. This agreement is to be executed between the Superintendent of Public Instruction, LACOE, and the Santa Monica-Malibu Unified School District, wherein LACOE agrees to pay Santa Monica-Malibu Unified School District Child Development Fund an amount not to exceed \$1,565,641 for the Head Start-Basic Program and \$10,282 for the Head Start Training and Technical Assistance.

COMMENT: Head Start is a federal grant program with a long history of providing comprehensive child development and support services to young children and families with incomes at or below the poverty level. The contract, operates on a minimum of 200 days, provides for the operation of ten Head Start classes – approximately 194 children in a full day setting in partnership with State Preschools funds.

Goals (2010–2011)

1. Support the school success of eligible, low-income children by providing opportunities for their families to transcend the effect of poverty.

Objectives:

- Design and implement a service delivery model for overweight children.
- Support the achievement of children identified with difficulties in learning.
- Continue training and monitor child outcomes of English Language Learners.
- Design a curriculum for frequency of math operations and cross training of effective lessons.
- Create a partnership with organizations serving Head Start eligible families to coordinate a responsive delivery of services.
- Extend and revise the collaborative partnerships in order to improve the quality of service for homeless families.
- Implement a District wide transition plan for children moving from preschool to kindergarten.

2. To maintain a consistent and cohesive Fiscal Services desk.

Objective:

- Cross train another staff person on Head Start record keeping and reporting procedures.

BUDGET 2010 - 2011	
Personnel	\$1,079,532
Fringe Benefits	333,218
Travel	3,290
Equipment	0
Supplies	37,771
Contractual	20,000
Construction	0
Other	91,830
TOTAL	\$1,565,641

MOTION MADE BY: Mr. Snell

SECONDED BY: Mr. Allen

STUDENT ADVISORY VOTE: Aye

AYES: All (6) (Dr. Escarce was absent)

NOES: None (0)

TO: BOARD OF EDUCATION

ACTION/CONSENT

12/10/09

FROM: TIM CUNEO / MICHAEL D. MATTHEWS / JUDY ABDO

RE: APPROVAL OF FEE INCREASE FOR THE PRESCHOOL PROGRAMS FOR FISCAL YEAR 2010-2011

RECOMMENDATION NO. A.08

It is recommended that the Board of Education approve a fee increase for non-subsidized parents in the preschool Programs effective February 1, 2010.

COMMENT: It is a condition of the Funding Terms and State and Federal Programs that parents' fees in the non-subsidized program cannot be less than the daily/monthly reimbursement rate for subsidized families receiving the same services.

Proposed Fee Schedule

Program	Current	Required
Part-Day California State Preschool	\$450	\$475
Full-Day at John Adams and Washington West	\$950	\$975

***** ***** ***** ***** ***** *****

In response to Ms. Pye concern, Ms. Abdo explained that the fee increases would be applied to those families who pay full price, not families who receive subsidies.

MOTION MADE BY: Mr. Snell
SECONDED BY: Mr. Allen
STUDENT ADVISORY VOTE: Aye
AYES: All (6) (Dr. Escarce was absent)
NOES: None (0)

TO: BOARD OF EDUCATION

ACTION/CONSENT

12/10/09

FROM: TIM CUNEO / CHIUNG-SALLY CHOU / SARA WOOLVERTON

RE: APPROVAL OF SPECIAL EDUCATION CONTRACTS – 2009-2010

RECOMMENDATION NO. A.09

It is recommended that the Board of Education approve the following Special Education Contracts for fiscal year 2009-2010 as follows:

NPS

2009-2010 Budget 01-65000-0-57500-11800-5125-043-1400

Nonpublic School/Agency	SSID	Service Description	Contract Number	Cost Not to Exceed
The HELP Group (Village Glen)	9103129211	NPS	#60-SPED10134	\$ 21,693
Westview School	8103108778	NPS	#61-SPED10135	\$ 32,822
Devereux Texas – contract increase	8104352488	Transportation	#40-SPED10040	\$ 1,200
The HELP Group (Village Glen West)	6/26/95	NPS	#62-SPED10136	\$ 43,848
Academy for the Advancement of Children with Autism	8/16/95	1:1 aide	#1-SPED10001	\$ 47,600

Amount Budgeted NPS 09/10
Prior Board Authorization as of 11/19/09

\$ 1,500,000

\$ 1,857,549

Balance \$ - 357,549

Positive Adjustment (See Below)

\$ 0

Total Amount for these Contracts

\$ 147,163

Balance \$ -504,712

Adjustment					
NPS	Service Description	Contract Number	Reduce (R) Eliminate (E)	Adjusted Amount	Comment
NPS Budget 01-65000-0-57500-11800-5125-043-1400					
There has been a reduction in authorized expenditures of NPS/NPA contracts for FY 2009-10 in the amount of \$ 0 as of 12/10/09					

NPA

2009-2010 Budget 01-65000-0-57500-11800-5126-043-1400

Nonpublic School/Agency	SSID	Service Description	Contract Number	Cost Not to Exceed
Believeability	10/2/01	AT assessment	#26-SPED10137	\$ 1,070
Believeability	5103152572	AT assessment	#27-SPED10138	\$ 1,070
Believeability	1168092573	AT assessment	#28-SPED10139	\$ 1,070

Beverly Hills Speech & Language Center	12/10/05	Speech Assessment	#29-SPED10140	\$ 1,463
WAPADH	4103152380	AAC Assessment	#30-SPED10141	\$ 1,200
WAPADH	2104353235	AAC	#31-SPED10148	\$ 250
WAPADH	8156409118	AAC	#32-SPED10149	\$ 250
Hear to Talk	1103200503	Audio Verbal Therapy	#33-SPED10150	\$ 2,600
Believeability	3103123787	AT Assessment	#34-SPED10151	\$ 440

Amount Budgeted NPA 09/10	\$ 860,000
Prior Board Authorization as of 11/19/09	\$ <u>781,629</u>
Balance	\$ 78,371
Positive Adjustment (See Below)	\$ <u>0</u>
Total Amount for these Contracts	\$ <u>9,413</u>
Balance	\$ 68,958

Adjustment					
NPA Budget 01-65000-0-57500-11800-5126-043-1400					
There has been a reduction in authorized expenditures of NPS/NPA contracts for FY 2009-10 in the amount of \$ 0 as of 12/05/09					
NPA	Service Description	Contract Number	Reduce (R) Eliminate (E)	Adjusted Amount	Comment

NPS/ NPA PRE SCHOOL

2009-2010 Budget 01-65000-0-57300-11800-5126-043-1400

Nonpublic School/Agency	SSID	Service Description	Contract Number	Cost Not to Exceed

Amount Budgeted NPA Pre School 09/10	\$ 140,000
Prior Board Authorization as of 11/19/09	\$ <u>0</u>
Balance	\$ 140,000
Total Amount for these Contracts	\$ <u>0</u>
Balance	\$ 140,000

Instructional Consultants

2009-2010 Budget 01-65000-0-57500-11900-5802-043-1400

Instructional Consultant	SSID	Service Description	Contract Number	Cost Not to Exceed
Adrian Whitchelo-Scott	3103139237	IEP Attendance	#34-SPED10145	\$ 1,010
Adrian Whitchelo-Scott	2103153895	Assistive Technology Training	#35-SPED10146	\$ 1,980

Amount Budgeted Instructional Consultants 09/10		\$ 380,000
Prior Board Authorization as of 1119/09		<u>\$ 431,224</u>
	Balance	\$ - 51,224
Positive Adjustment (See Below)		<u>\$ 0</u>
Total Amount for these Contracts		<u>\$ 2,990</u>
	Balance	\$ - 54,214

Adjustment					
Instructional Consultants Budget 01-65000-0-57500-11900-5802-043-1400					
There has been a reduction in authorized expenditures of Instructional Consultants contracts for FY 2009-10 in the amount of \$ as of 12/05/09					
Instructional Consultant	Service Description	Contract Number	Reduce (R) Eliminate (E)	Adjusted Amount	Comment

Instructional Consultants -INFANT
2009-2010 Budget 01-65000-0-57100-11900-5802-043-1400

Nonpublic School/Agency	SSID	Service Description	Contract Number	Cost Not to Exceed

Amount Budgeted Instructional Consult-Infants 09/10		\$ 20,000
Prior Board Authorization as of 11/19/09		<u>\$ 0</u>
	Balance	\$ 20,000
Total Amount for these Contracts		<u>\$ 14,210</u>
	Balance	\$ 5,790

Instructional Consultants -PRE SCHOOL
2009-2010 Budget 01-65000-0-57300-11900-5802-043-1400

Nonpublic School/Agency	SSID	Service Description	Contract Number	Cost Not to Exceed

Amount Budgeted Instruct Consult-Pre School 09/10		\$ 100,000
Prior Board Authorization as of 11/19/09		<u>\$ 0</u>
	Balance	\$ 100,000
Total Amount for these Contracts		<u>\$ 9,200</u>
	Balance	\$ 90,800

Non-Instructional Consultants
2009-2010 Budget 01-65000-0-57500-11900-5890-043-1400

Non-Instructional Consultant	SSID	Service Description	Contract Number	Cost Not to Exceed
Parent Reimbursement	3104351447	Transportation	#9-SPED10142	\$ 1,200
Parent Reimbursement	6050011724	Transportation	#10-SPED10143	\$ 1,200

Parent Reimbursement	6070988204	Transportation	#11-SPED10144	\$ 1,200
Parent Reimbursement	3102157067	Transportation	#12-10145	\$ 860
Parent Reimbursement	3103139327	AT Equipment	#13-SPED10147	\$ 280

Amount Budgeted Non-Instructional Consultants 09/10	\$ 299,000
Prior Board Authorization as of 11/19/09	\$ 268,649
	Balance \$ 30,351
Positive Adjustment (See Below)	\$ 0
Total Amount for these Contracts	\$ 4,740
	Balance \$ 25,611

Adjustment					
Non-Instructional Consultants Budget 01-65000-0-57500-11900-5890-043-1400					
There has been a reduction in authorized expenditures of Non-Instructional Consultants contracts for FY 2009-10 in the amount of \$ as of 12/10/09					
Non- Instructional Consultant	Service Description	Contract Number	Reduce (R) Eliminate (E)	Adjusted Amount	Comment

Legal

2009-2010 Budget 01-65000-0-57500-11900-5820-043-1400

Legal Contractor	Service Description	Contract Number	Cost Not to Exceed

Amount Budgeted Legal Services 09/10	\$ 700,000
Prior Board Authorization as of 11/19/09	25,000
	Balance \$ 675,000
Adjustments for this period	\$ 0
Total Amount for these Contracts	\$ 23,767
	Balance \$ 651,233

COMMENT: According to the Education Code SEC.21 Section 56342, prior to recommending a new or continued placement in a non-public, non-sectarian school, the Individualized Education Program (IEP) Team must submit the proposed recommendation to the local governing board for its review and recommendation regarding the cost of such placement.

The recommendations for these severely handicapped students are made by the District IEP Teams in accordance with State and Federal laws. The mandates of IDEA require non-public school services be provided at no expense to parents if there is not an appropriate public school program available. Funding to come from a SELPA-wide non-public school/non-public agency reserve account.

MOTION MADE BY: Mr. Snell
 SECONDED BY: Mr. Allen
 STUDENT ADVISORY VOTE: Aye
 AYES: All (6) (Dr. Escarce was absent)
 NOES: None (0)

TO: BOARD OF EDUCATION

ACTION/CONSENT

12/10/09

FROM: TIM CUNEO / JANECE L. MAEZ / VIRGINIA I. HYATT

RE: AWARD OF PURCHASE ORDERS – 2009-2010

RECOMMENDATION NO. A.10

It is recommended that the Board of Education approve the following Purchase Orders and Changed Purchase Orders from November 12, through December 1, 2009, for fiscal /10.

MOTION MADE BY: Mr. Snell

SECONDED BY: Mr. Allen

STUDENT ADVISORY VOTE: Aye

AYES: All (6) (Dr. Escarce was absent)

NOES: None (0)

SANTA MONICA-MALIBU UNIFIED SCHOOL DISTRICT
PURCHASE ORDERS TO BE APPROVED AT THE BOARD MEETING OF DECEMBER 10, 2009

U-GENERAL FUND, UNRESTRICTED R-GENERAL FUND, RESTRICTED A-ADULT ED CD-CHILD DEVELOPMENT F-CAFETERIA
SF-SPECIAL FINANCING (FLEX) BB,X-BONDS D-DEVELOPER FEES SR-SPECIAL RESERVE CAPITAL
DF-DEFERRED MAINTENANCE SM-STATE MODERNIZATION

PO NO.	VENDOR	DESCRIPTION	LOCATION	AMOUNT	
<u>*** CHANGED PURCHASE ORDERS ***</u>					
103482	GALE SUPPLY CO	INCREASE PO 102348	MALIBU HIGH SCHOOL	103.04	U
103505	GALE SUPPLY CO	INCREASE PO 102348	MALIBU HIGH SCHOOL	84.52	U
			** CHANGED PURCHASE ORDERS	187.56	
<u>*** NEW PURCHASE ORDERS ***</u>					
103554	A & R WHOLESALE DISTRIBUTORS	OPEN ORDER FOR SNACK FOOD	SAMOHI STUDENT STORE	2,700.00	U
103524	A-Z BUS SALES	Repair Parts - Bus #5	TRANSPORTATION	931.93	R
103597	A-Z BUS SALES	Open order for repair parts	TRANSPORTATION	4,000.00	R
103591	A.J FISTES CORPORATION	MAINT REPAIRS-OLYMPIC HI SIGN	FACILITY MAINTENANCE	955.00	R
103350	AAA FLAG & BANNER MFG. -L.A.	SIGNS MAINT SIDEWALK CLOSED	FACILITY MAINTENANCE	227.73	R
103337	AAA FLAG AND BANNER/W.L.A.	Event Parking signs for Barnum	THEATER OPERATIONS&FACILITY PR	455.46	R
103355	ACCREDITING COMMISSION	ACCREDITATION	SANTA MONICA HIGH SCHOOL	720.00	U
103384	ADVANCE LANDAU TOPS	OPEN ORDER OPERATIONS VEHICLES	GROUND MAINTENANCE	400.00	R
103637	ADVANCED ELECTRONICS	RADIO REPAIR	SANTA MONICA HIGH SCHOOL	900.00	R
103547	AIRGAS INC (SO CAL AIRGAS)	OPEN ORDER-METAL SUPPLIES	FACILITY MAINTENANCE	500.00	R
103304	AMERICAN COUNCIL ON EDUCATION	GED MATERIALS	ADULT EDUCATION CENTER	2,266.34	A
103447	ANAWALT LUMBER CO.INC	CLASS SUPPLIES/JEWELRY	SPECIAL ED SPECIAL PROJECTS	374.41	R
103557	ANAWALT LUMBER CO.INC	SUPPLIES/JEWELRY CLASS	SPECIAL ED SPECIAL PROJECTS	341.02	R
103442	ANNSON BUSINESS SOLUTIONS INC	LABELS	SPECIAL EDUCATION REGULAR YEAR	298.13	R
103537	APPLE COMPUTER CORP	APPLE COMPUTER	MALIBU HIGH SCHOOL	1,412.52	U
103541	ASCD	ASCD MEMBERSHIP RENEWAL	MALIBU HIGH SCHOOL	985.00	U
103459	BERKELEY STREET BEVERAGE CO	CALIFORNIA FREEZIES	FOOD SERVICES	10,000.00	F
103348	BLUE POINT ELECTRIC	MAINT GROUND ROD TESTING	FACILITY MAINTENANCE	440.00	R
103596	CALIFORNIA DEPT OF EDUCATION	CA Career TechEd Stnds	STATE AND FEDERAL PROJECTS	856.48	R
103339	CALIFORNIA OFFICE SYSTEMS INC	CHAIR MAT	FISCAL SERVICES	61.46	U
103421	CALIFORNIA OFFICE SYSTEMS INC	CLASSROOM SUPPLIES/MALIBU FIRE	INSURANCE SERVICES	2,073.46	R
103581	CALIFORNIA OFFICE SYSTEMS INC	OPEN ORDER/INST SUP/TEAM	JOHN ADAMS MIDDLE SCHOOL	115.00	U
103644	CALIFORNIA OFFICE SYSTEMS INC	Supplies for office	GRANT ELEMENTARY SCHOOL	1,500.00	U
103594	CALIFORNIA PEST MANAGEMENT INC	GROUNDS CONTRACT PEST CONTROL	GROUND MAINTENANCE	375.00	R
103634	CANON BUSINESS SOLUTIONS-WEST	MAINTENANCE AGREEMENT	OLYMPIC CONTINUATION SCHOOL	623.21	R
103451	CARLSONS APPLIANCES	COMPACT APPLIANCE	PERSONNEL COMMISION	189.50	U
103453	CARLSONS APPLIANCES	MALIBU FIRE REPLACEMENT	INSURANCE SERVICES	112.68	R
103577	CARY, JOHN	REIMBURSEMENT TESTING FEE	STATE AND FEDERAL PROJECTS	294.00	R
103417	CDW-G COMPUTING SOLUTIONS	COMPUTER PARTS	SANTA MONICA HIGH SCHOOL	3,827.66	R
103486	CDW-G COMPUTING SOLUTIONS	INSTRUCTIONAL SUPPLIES	R O P	262.63	R
103418	CENTRAL PHARMACY	HEALTH ITEMS	CHILD DEVELOPMENT CENTER	357.70	CD
103592	CHAMPION CHEMICAL	CUSTODIAL SUPPLIES	FACILITY OPERATIONS	942.38	U
103578	CHANG, CAROL	REIMBURSEMENT CTEL EXAM FEE	STATE AND FEDERAL PROJECTS	303.00	R
103561	COMMUNITY CARE LICENSING	LICENSING FEES	CHILD DEVELOPMENT CENTER	4,510.00	CD
103553	COPYLAND INC	SCHOOL SEAL TOTE BAGS	SAMOHI STUDENT STORE	232.40	U
103498	CORPORATE EXPRESS	OPEN ORD FOR TRANSITION PRGM	SPECIAL ED SPECIAL PROJECTS	1,000.00	R
103471	CORPORATE EXPRESS/US OFFICE	SUPPLIES	STUDENT SERVICES	1,000.00	U
103535	COX PAINT INC	MAINT OPEN ORDER PAINT SUPPLY	FACILITY MAINTENANCE	1,500.00	R
103472	CURRICULUM ASSOC INC	TEACHER TEST KIT	SPECIAL EDUCATION REGULAR YEAR	358.05	R
103320	CYBERGUYS COMPUTER ACCESSORIES	COMPUTER SUPPLIES	WILL ROGERS ELEMENTARY SCHOOL	1,567.10	R
103357	DIAGNOSTICS DIRECT INC	SUPPLIES	CHILD DEVELOPMENT CENTER	383.88	CD
103465	DISCOUNT SCHOOL SUPPLY	CHANGING TABLE	SPECIAL EDUCATION REGULAR YEAR	898.10	R
103385	DOALL INDUSTRIAL SUPPLY	OPEN ORDER GROUND SUPPLIES	GROUND MAINTENANCE	400.00	R
103287	DUANE, JANEEN	CLASSROOM SUPPLIES/BAGS	INSURANCE SERVICES	125.00	R

PURCHASE ORDERS TO BE APPROVED AT THE BOARD MEETING OF DECEMBER 10, 2009

U-GENERAL FUND,UNRESTRICTED R-GENERAL FUND,RESTRICTED A-ADULT ED CD-CHILD DEVELOPMENT F-CAFETERIA
 SF-SPECIAL FINANCING (FLEX) BB,X-BONDS D-DEVELOPER FEES SR-SPECIAL RESERVE CAPITAL
 DF-DEFERRED MAINTENANCE SM-STATE MODERNIZATION

PO NO.	VENDOR	DESCRIPTION	LOCATION	AMOUNT	
103522	DURHAM TRANSPORTATION	School Bus Trip -	TRANSPORTATION	574.55	R
103598	DURHAM TRANSPORTATION	OUTSTANDING ATHLETIC INVOICES	MALIBU HIGH SCHOOL	2,542.27	U
103601	EAI EDUCATION	INSTRUCTIONAL SUP/MATH/EQUITY	JOHN ADAMS MIDDLE SCHOOL	1,776.72	R
103423	EAST BAY RESTAURANT SUPPLY INC	4' WORK TABLE FOR ROGERS	FOOD SERVICES	120.73	F
103480	EAST BAY RESTAURANT SUPPLY INC	REFRIGERATOR LEGS	FOOD SERVICES	77.03	F
103378	ELY JR'S PUMPING	MAINT CONTRACT PUMPING PITS	FACILITY MAINTENANCE	3,316.42	R
103380	ELY JR'S PUMPING	MAINT CONTRACT PUMPING PITS	FACILITY MAINTENANCE	3,316.42	R
103566	EPSON ACCESSORY INC.	AV BULBS	SANTA MONICA HIGH SCHOOL	342.06	R
103342	EVALUMETRICS INC	FITGRAM SCANTRON TESTING	CURRICULUM AND IMC	1,485.04	R
103387	EWING IRRIGATION PRODUCTS	OPEN ORDER IRRIGATION SUPPLIES	GROUNDS MAINTENANCE	750.00	R
103538	FISHER HARDWARE INC	OPEN ORDER-MAINT BLDG SUPPLIES	FACILITY MAINTENANCE	1,000.00	R
103366	FISHER SCIENTIFIC	SCIENCE LAB EQUIPMENT	INSURANCE SERVICES	1,502.35	R
103358	GALE SUPPLY CO	TRASH CANS	CHILD DEVELOPMENT CENTER	107.66	CD
103360	GALE SUPPLY CO	JANITORIAL SUPPLIES	CHILD DEVELOPMENT CENTER	854.62	CD
103389	GALE SUPPLY CO	OPEN ORDER OPERATIONS SUPPLIES	FACILITY OPERATIONS	2,000.00	U
103400	GALE SUPPLY CO	CUSTODIAL SUPPLIES	WILL ROGERS ELEMENTARY SCHOOL	737.32	U
103408	GALE SUPPLY CO	CUSTODIAL SUPPLIES	CHILD DEVELOPMENT CENTER	678.15	CD
103410	GALE SUPPLY CO	CUSTODIAL SUPPLIES	CHILD DEVELOPMENT CENTER	815.88	CD
103412	GALE SUPPLY CO	CUSTODIAL SUPPLIES	CHILD DEVELOPMENT CENTER	419.90	CD
103413	GALE SUPPLY CO	CUSTODIAL SUPPLIES	CHILD DEVELOPMENT CENTER	634.68	CD
103424	GALE SUPPLY CO	CUSTODIAL SUPPLIES	WILL ROGERS ELEMENTARY SCHOOL	395.70	U
103491	GALE SUPPLY CO	CUSTODIAL/WINTER	CHILD DEVELOPMENT CENTER	307.08	CD
103529	GALE SUPPLY CO	custodial supplies	FRANKLIN ELEMENTARY SCHOOL	1,326.81	R
103576	GALE SUPPLY CO	CUSTODIAL SUPPLIES	LINCOLN MIDDLE SCHOOL	1,093.55	U
103583	GALE SUPPLY CO	CUSTODIAL SUPPLIES	JOHN ADAMS MIDDLE SCHOOL	932.44	U
103615	GALE SUPPLY CO	CUSTODIAL SUPPLIES	WEBSTER ELEMENTARY SCHOOL	487.95	R
103415	GBC/EDUCATION DEPARTMENT	LAMINATOR SUPPLIES	MCKINLEY ELEMENTARY SCHOOL	215.77	R
103392	GRAPH COMPANY	MAINT CONTRACT LIGHT REPAIR	FACILITY MAINTENANCE	1,669.78	R
103336	GREAT SOURCE EDUCATION GROUP	Workbook/Consumables	FRANKLIN ELEMENTARY SCHOOL	45.60	R
103393	GREENFIELD LEARNING INC	LEXIA SOFTWARE	WILL ROGERS ELEMENTARY SCHOOL	13,715.00	R
103381	GUILD, ELIZABETH	CLASS SUPPLIES/JEWELRY	SPECIAL ED SPECIAL PROJECTS	138.21	R
103446	GUILD, ELIZABETH	CLASS SUPPLIES/JEWELRY	SPECIAL ED SPECIAL PROJECTS	199.15	R
103351	HIRSCH PIPE & SUPPLY	OPEN ORDER MAINT PLUMBING	FACILITY MAINTENANCE	2,000.00	R
103542	HOLT RINEHART & WINSTON	ALGEBRA 1 BOOKS	MALIBU HIGH SCHOOL	6,701.12	R
103368	HOME DEPOT- L.A.	WOOD SHOP SUPPLIES	SPECIAL ED SPECIAL PROJECTS	6,700.00	R
103565	HOPE FOUNDATION	RESOURCE MATERIALS	STATE AND FEDERAL PROJECTS	41.65	R
103335	HOUGHTON MIFFLEN HARCOURT	Workbooks/Consumables	FRANKLIN ELEMENTARY SCHOOL	128.90	R
103614	HOUGHTON MIFFLEN HARCOURT	Consumables	FRANKLIN ELEMENTARY SCHOOL	436.49	R
103549	HOWARD INDUSTRIES	MAINT OPEN ORDER-HVAC SUPPLIES	FACILITY MAINTENANCE	3,000.00	R
103364	IMED	AV EQUIPMENT	INSURANCE SERVICES	232.24	R
103616	IMED	AV BULBS	SANTA MONICA HIGH SCHOOL	384.34	R
103445	INDIAN JEWELERS SUPPLY CO.INC	CLASSROOM SUPPLIES/JEWELRY	SPECIAL ED SPECIAL PROJECTS	150.48	R
102511	INTELLI-TECH	laptops for Malibu ISP	STATE AND FEDERAL PROJECTS	3,678.68	R
103356	INTELLI-TECH	REPLACEMENT LAPTOPS	CHILD DEVELOPMENT CENTER	4,440.20	CD
103536	INTELLI-TECH	COMPUTERS FOR MHS	MALIBU HIGH SCHOOL	21,005.66	R
103642	INTERNATIONAL PAPER	COPIER PAPER	WILL ROGERS ELEMENTARY SCHOOL	422.51	U
103580	JUNIOR LIBRARY GUILD	library books	JOHN MUIR ELEMENTARY SCHOOL	1,491.00	R
103528	JW PEPPER OF LOS ANGELES	STAIRWAY SHEET MUSIC	CURRICULUM AND IMC	3,000.00	R
103370	KELEHER, DARCI	REIMBURSEMENT	SPECIAL EDUCATION REGULAR YEAR	182.29	R
103475	KI	OFFICE CHAIRS	EDISON ELEMENTARY SCHOOL	636.31	U
103341	L A HYDRO-JET & ROOTER SER INC	OPEN ORDER EMERGENCY PLUMBING	FACILITY MAINTENANCE	5,000.00	R

SANTA MONICA-MALIBU UNIFIED SCHOOL DISTRICT
PURCHASE ORDERS TO BE APPROVED AT THE BOARD MEETING OF DECEMBER 10, 2009

U-GENERAL FUND,UNRESTRICTED R-GENERAL FUND,RESTRICTED A-ADULT ED CD-CHILD DEVELOPMENT F-CAFETERIA
SF-SPECIAL FINANCING (FLEX) BB,X-BONDS D-DEVELOPER FEES SR-SPECIAL RESERVE CAPITAL
DF-DEFERRED MAINTENANCE SM-STATE MODERNIZATION

PO NO.	VENDOR	DESCRIPTION	LOCATION	AMOUNT	
103495	LACOE	80% OF OUTDOOR SCIENCE SCHOOL	WILL ROGERS ELEMENTARY SCHOOL	1,700.00	R
103527	LACOE - DIV FOR SCHOOL	PROFESSIONAL DEV. SEPT 2-3	EDISON ELEMENTARY SCHOOL	3,000.00	R
103296	LAKESHORE (PICK UP ONLY)	OPEN ORDER/INSTRUCTIONAL ITEMS	CHILD DEVELOPMENT CENTER	150.00	CD
103401	LAKESHORE (PICK UP ONLY)	OPEN ORDER/INSTRUCTIONAL	CHILD DEVELOPMENT CENTER	175.00	CD
103473	LAKESHORE (PICK UP ONLY)	CAROL G. INTERVENTION MATERIAL	EDISON ELEMENTARY SCHOOL	50.00	R
103454	LAKESHORE CURRICULUM	CLASSROOM SUPPLIES	SPECIAL EDUCATION REGULAR YEAR	52.61	R
103490	LAKESHORE CURRICULUM	INSTRUCTIONAL	CHILD DEVELOPMENT CENTER	148.45	CD
103089	LASERCARE	Toner	FRANKLIN ELEMENTARY SCHOOL	569.49	R
103568	LASERCARE	Ink Cartridge	FRANKLIN ELEMENTARY SCHOOL	186.52	U
103463	MACGILL	NURSING SUPPLIES	SANTA MONICA HIGH SCHOOL	438.22	U
103496	MACMALL/PC MALL	SOFTWARE	SPECIAL EDUCATION REGULAR YEAR	399.93	R
103520	MAGNA PUBLICATIONS INC	ONLINE SEMINAR FOR TEACHERS	EDISON ELEMENTARY SCHOOL	199.00	R
103533	MAILROOM FINANCE INC.,	POSTAGE	SANTA MONICA HIGH SCHOOL	3,219.61	U
103483	MALIBU HIGH SCHOOL ATHLETIC	TEMPORARY FIELD LIGHTS AT MHS	BUSINESS SERVICES	16,407.63	R
103543	MARSHALL MUSIC	SHEET MUSIC	MALIBU HIGH SCHOOL	500.00	R
103419	MASUNE/MEDCO SCHOOL FIRST AID	HEALTH SUPPLIES	PINE-CHILD DEVELOPMENT CENTER	522.95	CD
103590	MC MASTER CARR	OPERATIONS CUSTODIAL SUPPLIES	FACILITY OPERATIONS	228.85	U
103539	MENDEZ FOUNDATION	MS WORKBOOKS	MALIBU HIGH SCHOOL	384.25	R
103500	MICON CONSTRUCTION	MAINT OPEN ORDER EQUIP INSTALL	FACILITY MAINTENANCE	2,500.00	R
103394	MIRACLE PLAYGROUND SALES OF	MAINT PLAYGROUND EQUIPMENT	FACILITY MAINTENANCE	1,003.53	R
103497	MITCHELL, KENNETH	OPEN PO (MILEAGE REIMBURSEMENT)	SPECIAL EDUCATION REGULAR YEAR	1,200.00	R
103374	MORICH, KAREN	MILEAGE REIMBURSEMENT	SPECIAL EDUCATION REGULAR YEAR	100.00	R
103441	NASSP	PD REFERENCE BOOKS	CURRICULUM AND IMC	454.00	R
103544	NICK RAIL MUSIC	INSTRUMENTAL MUSIC SUPPLIES	MALIBU HIGH SCHOOL	329.25	R
103455	NORTHERN SPEECH SERVICES INC	PROTOCOL	SPECIAL EDUCATION REGULAR YEAR	226.33	R
103560	NOVECK, MARY ANNA	REIMBURSEMENT FOR SUBSCRIPTION	WILL ROGERS ELEMENTARY SCHOOL	117.00	R
103422	OFFICE MAX	PAPER	SANTA MONICA HIGH SCHOOL	409.26	U
103409	OLIVER WORLDCLASS LABS INC	CLASSROOM ELMOS	MCKINLEY ELEMENTARY SCHOOL	1,260.18	R
103359	ONAMI, JANICE	REIMBURSEMENT	CHILD DEVELOPMENT CENTER	93.15	CD
103363	ONE STOP PRINT SHOP	PRINTING	SANTA MONICA HIGH SCHOOL	292.87	U
103386	P O BAHN & SONS	OPEN ORDER GROUNDS SUPPLIES	GROUNDS MAINTENANCE	500.00	R
103340	PAUL SHIVERS	GROUNDS CONTRACT TREE TRIMMING	GROUNDS MAINTENANCE	2,575.00	R
103646	PEARSON EDUCATION #3	TEXTBOOKS	SANTA MONICA HIGH SCHOOL	1,612.02	R
103338	POSTMASTER-SANTA MONICA	Postage	ROOSEVELT ELEMENTARY SCHOOL	386.32	U
103369	Pocket Full of Therapy	OCCUPATIONAL THERAPY SUPPLIES	SPECIAL EDUCATION REGULAR YEAR	238.24	R
103516	QUARTERMASTER	SUPPLIES SECURITY UNIFORMS	ADULT EDUCATION CENTER	167.20	A
103546	QUARTERMASTER	SECURITY UNIFORMS	SANTA MONICA HIGH SCHOOL	197.55	R
103404	RALPHS MARKET	OPEN ORDER/COOKING & SCIENCE	CHILD DEVELOPMENT CENTER	55.00	CD
103361	RAYVERN LIGHTING	LIGHTING	CHILD DEVELOPMENT CENTER	58.61	CD
103487	REES ELECTRONICS OFFICE	INSTRUCTIONAL SUPPLIES	R O P	35.58	R
103444	RIVERSIDE PUBLISHING COMPANY	PROTOCOLS	SPECIAL EDUCATION REGULAR YEAR	383.20	R
103555	SANTA MONICA MUN BUS LINES	OPEN ORDER FOR STUDENT CARDS	SAMOHI STUDENT STORE	2,000.00	U
103618	SANTA MONICA MUN BUS LINES	Open order or fuel costs	TRANSPORTATION	8,000.00	R
103638	SANTA MONICA POLICE DEPT	SECURITY & CROWD CONTROL	SANTA MONICA HIGH SCHOOL	680.46	R
103604	SCHOLASTIC SOFTWARE	MAINTENANCE PLAN/READ 180/EIA	JOHN ADAMS MIDDLE SCHOOL	2,950.00	R
103499	SCHOOL SPECIALTY INC	RAINY DAY MATERIALS	WILL ROGERS ELEMENTARY SCHOOL	1,556.87	R
103526	SCOTT FORESMAN & CO	KINDER BIG BOOK/BACKORDER	EDISON ELEMENTARY SCHOOL	1,896.48	R
103525	SEA CLEAR POOLS	EMERGENCY RESOLUTION NO. 08-14	FACILITY MAINTENANCE	30,550.00	R
103613	SEHI COMPUTER PRODUCTS	Cartridge for office printer	GRANT ELEMENTARY SCHOOL	164.23	U
103648	SEHI COMPUTER PRODUCTS	PRINTER	SANTA MONICA HIGH SCHOOL	253.55	R
103633	SETON IDENTIFICATION PRODUCTS	INVENTORY BAR CODE LABELS	PURCHASING/WAREHOUSE	1,839.64	U

SANTA MONICA-MALIBU UNIFIED SCHOOL DISTRICT
PURCHASE ORDERS TO BE APPROVED AT THE BOARD MEETING OF DECEMBER 10, 2009

U-GENERAL FUND, UNRESTRICTED R-GENERAL FUND, RESTRICTED A-ADULT ED CD-CHILD DEVELOPMENT F-CAFETERIA
SF-SPECIAL FINANCING (FLEX) BB,X-BONDS D-DEVELOPER FEES SR-SPECIAL RESERVE CAPITAL
DF-DEFERRED MAINTENANCE SM-STATE MODERNIZATION

PO NO.	VENDOR	DESCRIPTION	LOCATION	AMOUNT	
103521	SHELL FLEET CARD SERVICES	Open order for fuel costs	TRANSPORTATION	3,000.00	R
103477	SHIVERS, PAUL	GROUNDS CONTRACT TREE TRIM	GROUNDS MAINTENANCE	4,985.00	R
103481	SIMPLEXGRINNELL	MAINT CONTRACT ALARM REPAIRS	FACILITY MAINTENANCE	4,800.00	R
103512	SIR SPEEDY PRINTING	Business Cards Upton & Part	THEATER OPERATIONS&FACILITY PR	57.07	R
103641	SIR SPEEDY PRINTING #0245	Business Cards Upton & Part	THEATER OPERATIONS&FACILITY PR	57.07	R
103489	SMART & FINAL	OPEN PO FOR SP ED IS/SAMOHI	SPECIAL EDUCATION REGULAR YEAR	500.00	R
103509	SMART & FINAL	OPEN PO FOR SP ED IS CLASS	SPECIAL EDUCATION REGULAR YEAR	500.00	R
103534	SMART & FINAL	NON INSTR. SUPPLIES/STRWY	CURRICULUM AND IMC	1,500.00	R
103439	SOUTHPAW ENTERPRISES	OCCUPATIONAL THERAPY SUPPLIES	SPECIAL EDUCATION REGULAR YEAR	244.11	R
103532	SOUTHWEST SCHOOL SUPPLY	TEACHER SUPPLIES FOR 09-10	EDISON ELEMENTARY SCHOOL	800.00	R
103569	SOUTHWEST SCHOOL SUPPLY	Storage/Organizers	CABRILLO ELEMENTARY SCHOOL	308.90	R
103443	SPORTIME	OCCUPATIONAL THERAPY SUPPLIES	SPECIAL EDUCATION REGULAR YEAR	722.11	R
103353	STAPLES BUSINESS ADVANTAGE	CLASSROOM SUPPLIES	SPECIAL ED SPECIAL PROJECTS	440.81	R
103469	STAPLES/P-U/SANTA MONICA/WILSH	OFFICE SUPPLIES	EDISON ELEMENTARY SCHOOL	300.00	U
103470	STAPLES/P-U/SANTA MONICA/WILSH	CAROL G.INTERVENTION MATERIALS	EDISON ELEMENTARY SCHOOL	50.00	R
103515	STAPLES/P-U/VENICE/LINCOLN BL	OPEN ORDER/SUPPLIES	CHILD DEVELOPMENT CENTER	80.00	CD
103431	STAPLES/P-U/WLA/CUST#240174490	Classroom Supplies	GRANT ELEMENTARY SCHOOL	100.00	U
103584	STATE OF CALIFORNIA	STATE OF CALIF. EPA ID FEE	FACILITY MAINTENANCE	822.50	U
103506	STEPS PROFESSIONAL DEVELOPMENT	PD BOOK	CURRICULUM AND IMC	58.78	R
103559	STERRETT, JEFFREY L	INDEPENDENT CONTRACT	SANTA MONICA HIGH SCHOOL	2,500.00	R
103436	STOELTING, ERIC	CLASSROOM SUPPLIES/JEWELRY	SPECIAL ED SPECIAL PROJECTS	543.39	R
103367	SUMINSKI, MARK	SUPPLIES FOR WOODSHOP	SPECIAL ED SPECIAL PROJECTS	200.00	R
103627	SUMINSKI, MARK	WOOD SHOP SUPPLIES	SPECIAL ED SPECIAL PROJECTS	400.00	R
103456	SUNBURST TECHNOLOGY CORP	LEARN TO TYPE SOFTWARE	SPECIAL EDUCATION REGULAR YEAR	95.74	R
103650	TARGET STORES	SUPPLIES	SPECIAL EDUCATION REGULAR YEAR	397.08	R
103586	THE BELL GROUP	SUPPLIES/JEWELRY CLASS	SPECIAL ED SPECIAL PROJECTS	93.36	R
103403	TOSHIBA	INK/TONER	CHILD DEVELOPMENT CENTER	471.68	CD
103609	TOSHIBA	Ink for Gestener	GRANT ELEMENTARY SCHOOL	116.66	U
103501	TOYS R US	PUZZLES FOR RAINY DAY	WILL ROGERS ELEMENTARY SCHOOL	200.00	R
103652	TOYS R US	BOOSTER SEATS	SPECIAL EDUCATION REGULAR YEAR	107.46	R
103420	TOYS-R-US	OPEN ORDER/INSTRUCTIONAL ITEMS	CHILD DEVELOPMENT CENTER	90.00	CD
103344	TUCKER, DAN	CLASSROOM SUPPLIES	INSURANCE SERVICES	200.00	R
103510	TUFF SHED	STORAGE BUILDINGS	FACILITY MAINTENANCE	4,442.68	R
103631	TUMBLEWEED EDUCATIONAL	Transportation/Field Trip	ROOSEVELT ELEMENTARY SCHOOL	425.00	R
103585	US BANK (GOVT CARD SERVICES)	DESIGN PRESCHOOL WORKSHOP	PURCHASING/WAREHOUSE	59.00	U
103636	US BANK (GOVT CARD SERVICES)	REPLACEMENT PRINTER	PURCHASING/WAREHOUSE	350.11	U
103461	VEGAS, KRIS	OPEN PO (MILEAGE REIMBURSEMENT)	SPECIAL EDUCATION REGULAR YEAR	1,140.00	R
103295	VONS MARKET-SANTA MONICA	OPEN ORDER/COOKING & SCIENCE	CHILD DEVELOPMENT CENTER	50.00	CD
103405	VONS MARKET-SANTA MONICA	OPEN ORDER/COOKING & SCIENCE	CHILD DEVELOPMENT CENTER	110.00	CD
103492	VONS MARKET-SANTA MONICA	COOKING/SCIENCE	CHILD DEVELOPMENT CENTER	90.00	CD
103402	VONS STORE #2262	OPEN ORDER/COOKING & SCIENCE	CHILD DEVELOPMENT CENTER	110.00	CD
103406	VONS STORE #2262	OPEN ORDER/COOKING & SCIENCE	CHILD DEVELOPMENT CENTER	165.00	CD
103407	VONS STORE #2262	OPEN ORDER/COOKING & SCIENCE	CHILD DEVELOPMENT CENTER	165.00	CD
103352	WALKER MOTOR CO	N2 VEHICLE REPAIR MAINT	FACILITY MAINTENANCE	500.00	R
103647	WALKER MOTOR CO	N2 FOR REPAIRS ON TRUCK #69	FACILITY MAINTENANCE	433.27	R
103651	WALKER MOTOR CO	N2 REPAIRS	PURCHASING/WAREHOUSE	1,400.00	U
103411	WEST COAST PRINT	SUPPLIES	MCKINLEY ELEMENTARY SCHOOL	32.93	R
103552	WORLD UNISPEC INC	REORDER SPIRIT WEAR	SAMOHI STUDENT STORE	1,080.00	U

** NEW PURCHASE ORDERS 282,699.68

SANTA MONICA-MALIBU UNIFIED SCHOOL DISTRICT
PURCHASE ORDERS TO BE APPROVED AT THE BOARD MEETING OF DECEMBER 10, 2009

U-GENERAL FUND, UNRESTRICTED R-GENERAL FUND, RESTRICTED A-ADULT ED CD-CHILD DEVELOPMENT F-CAFETERIA
SF-SPECIAL FINANCING (FLEX) BB,X-BONDS D-DEVELOPER FEES SR-SPECIAL RESERVE CAPITAL
DF-DEFERRED MAINTENANCE SM-STATE MODERNIZATION

PO NO.	VENDOR	DESCRIPTION	LOCATION	AMOUNT	
<u>** FACILITY IMPROVEMENTS: BONDS/STATE MODERNIZATON/NEW CONSTRUCTION/DEVELOPER FEES **</u>					
103570	AMERICAN REPROGRAPHICS CO	DOCUMENT REPRODUCTION & COPY	JOHN ADAMS MIDDLE SCHOOL	1,630.93	X
103457	AT&T	VOIP-ALL SITES	INFORMATION SERVICES	40,680.16	BB
103488	INTELLI-TECH	DESKTOP COMPUTER & MONITOR	BUSINESS SERVICES	871.93	BB
103556	JJ PLUMBING COMPANY INC	PLUMBING INVESTIGATIVE STUDY	WILL ROGERS ELEMENTARY SCHOOL	2,400.00	BB
103639	STATE OF CALIFORNIA	WARRANT REQUEST	GRANT ELEMENTARY SCHOOL	150.00	BB
103429	STATE WATER RESOURCES	APPLICATION FEE	SANTA MONICA HIGH SCHOOL	491.00	BB
103428	VERIZON CALIFORNIA INC	APPLICATION FEE	SANTA MONICA HIGH SCHOOL	1,600.00	BB
				47,824.02	
** FACILITY IMPROVEMENTS: BONDS/STATE MODERNIZATON/NEW CONSTRUCTION/DEVELOPER FEES					

TO: BOARD OF EDUCATION
FROM: TIM CUNEO / JANECE L. MAEZ / PAT HO
RE: ACCEPTANCE OF GIFTS – 2009/2010

ACTION/CONSENT
12/10/09

RECOMMENDATION NO. A.

It is recommended that the Board of Education accept, with gratitude, checks and gifts totaling \$10,436.98 presented to the Santa Monica-Malibu Unified School District.

It is further recommended that the Fiscal/Business Services Office, in accordance with Educational Code §42602, be authorized to increase the 2009-2010 income and appropriations by \$10,436.98 as described on the attached listing.

This report details only gifts of cash or non-cash items. It includes all contributions made by individuals or companies and some of the contributions made by our PTA's. Contributions made by a PTA in the form of a commitment and then billed are reported in a different resource. A final report that compiles all gift, PTA and Equity Fund contributions is prepared and available annually.

COMMENT: The value of all non-cash gifts has been determined by the donors.

NOTE: The list of gifts is available on the District's website, www.smmusd.org.

MOTION MADE BY: Mr. Snell
SECONDED BY: Mr. Allen
STUDENT ADVISORY VOTE: Aye
AYES: All (6) (Dr. Escarce was absent)
NOES: None (0)

Current Gifts and Donations 2009/2010

School/Site Account Number	Gift Amount	Equity Fund 15% Contrib.	In-kind Value	Donor	Purpose
JAMS 01-90120-0-00000-00000-8699-011-0000	\$ 1,275.00 \$ 52.97	\$ 225.00 \$ 9.35		Rand Corporation Coca Cola Bottling Company	General Supplies and Materials General Supplies and Materials
Adult Education 11-90120-0-00000-00000-8699-090-0000					
Alternative (SMASH) 01-90120-0-00000-00000-8699-009-0000					
Cabrillo 01-90120-0-00000-00000-8699-017-0000					
CDS 12-90120-0-00000-00000-8699-070-0000					
Edison 01-90120-0-00000-00000-8699-001-0000					
Franklin 01-90120-0-00000-00000-8699-002-0000					
Grant 01-90120-0-00000-00000-8699-003-0000					
Lincoln 01-90120-0-00000-00000-8699-012-0000					
Malibu High School 01-90120-0-00000-00000-8699-010-0000	\$ 1,547.00 \$ 650.00 \$ 440.00 \$ 357.00 \$ 36.66	\$ - \$ - \$ - \$ - \$ -		Various Students Barbara Crushow Various Students Various Students County of Los Angeles	General Supplies and Materials Field Trip General Supplies and Materials General Supplies and Materials General Supplies and Materials
McKinley 01-90120-0-00000-00000-8699-004-0000					
Muir 01-90120-0-00000-00000-8699-005-0000					
Olympic HS 01-90120-0-00000-00000-8699-014-0000	\$ 500.00	\$ -		Miriam W. Schulman	General Supplies and Materials

BOE Date: 12/10/09

Current Gifts and Donations 2009/2010

School/Site Account Number	Gift Amount	Equity Fund 15% Contrib.	In-kind Value	Donor	Purpose
Rogers 01-90120-0-00000-00000-8699-006-0000					
Roosevelt 01-90120-0-00000-00000-8699-007-0000					
Samohi 01-90120-0-00000-00000-8699-015-0000	\$ 3,825.00 \$ 844.00	\$ 675.00 \$ -		Samohi Band Parents Various	Teacher Hourly General Supplies and Materials
Barnum Hall 01-91150-0-00000-00000-8699-015-0000					
Pt. Dume Marine Science 01-90120-0-00000-00000-8699-019-0000					
Webster 01-90120-0-00000-00000-8699-008-0000					
Others:					
Superintendent's Office 01-90120-0-00000-00000-8699-020-0000					
Educational Services 01-90120-0-00000-00000-8699-030-0000					
Student & Family Services 01-90120-0-00000-00000-8699-040-0000					
Special Education 01-90120-0-00000-00000-8699-044-0000					
Information Services 01-90120-0-00000-0000-8699-054-0000					
Food and Nutrition Services 01-90120-0-00000-0000-8699-057-0000					
District 01-90120-0-00000-00000-8699-090-0000					
TOTAL	\$ 9,527.63	\$ 909.35	\$ -		

BOE Date: 12/10/09

Current Gifts and Donations 2009/2010

School/Site Account Number	Y-T-D Adjusted Gift Total	Current Gift Amount	Equity Fund 15% Contrib.	Cumulative Gift Amount	Y-T-D In-Kind Value	Current In-Kind Value	Cumulative In-Kind Value
JAMS 01-90120-0-00000-00000-8699-011-0000	\$ 32,799.95	\$ 1,327.97	\$ 234.35	\$34,362.27			\$ -
Adult Education 11-90120-0-00000-00000-8699-090-0000				\$ -			\$ -
Alternative (SMASH) 01-90120-0-00000-00000-8699-009-0000				\$ -			\$ -
Cabrillo 01-90120-0-00000-00000-8699-017-0000	\$ 4,660.39			\$ 4,660.39			\$ -
CDS 12-90120-0-00000-00000-8699-070-0000				\$ -			\$ -
Edison 01-90120-0-00000-00000-8699-001-0000	\$ 440.64			\$ 440.64			\$ -
Franklin 01-90120-0-00000-00000-8699-002-0000	\$ 152.30			\$ 152.30			\$ -
Grant 01-90120-0-00000-00000-8699-003-0000				\$ -			\$ -
Lincoln 01-90120-0-00000-00000-8699-012-0000	\$ 128.98			\$ 128.98			\$ -
Malibu High School 01-90120-0-00000-00000-8699-010-0000 <i>Malibu Shark Fund - Resource #90141</i>	\$ 9,332.66	\$ 3,030.66	\$ -	\$12,363.32			\$ -
McKinley 01-90120-0-00000-00000-8699-004-0000	\$ 2,126.00			\$ 2,126.00			\$ -
Muir 01-90120-0-00000-00000-8699-005-0000	\$ 956.99			\$ 956.99			\$ -
Olympic HS 01-90120-0-00000-00000-8699-014-0000	\$ 382.00	\$ 500.00	\$ -	\$ 882.00			\$ -
Rogers 01-90120-0-00000-00000-8699-006-0000	\$ 2,400.00			\$ 2,400.00			\$ -
Roosevelt 01-90120-0-00000-00000-8699-007-0000	\$ 152.45			\$ 152.45			\$ -
Samohi 01-90120-0-00000-00000-8699-015-0000	\$ 5,530.50	\$ 4,669.00	\$ 675.00	\$10,874.50	\$ 4,271.30		\$ 4,271.30
Pt. Dume Marine Science 01-90120-0-00000-00000-8699-019-0000				\$ -			\$ -
Webster 01-90120-0-00000-00000-8699-008-0000				\$ -			\$ -

Current Gifts and Donations 2009/2010

School/Site Account Number	Y-T-D Adjusted Gift Total	Current Gift Amount	Equity Fund 15% Contrib.	Cumulative Gift Amount	Y-T-D In-Kind Value	Current In-Kind Value	Cumulative In-Kind Value
ALL OTHER LOCATIONS:							
Superintendent's Office 01-90120-0-00000-00000-8699-020-0000				\$ -			\$ -
Educational Services 01-90120-0-00000-00000-8699-030-0000	\$ 5,592.75			\$ 5,592.75	\$ 1,635.00		\$ 1,635.00
Student and Family Support Services 01-90120-0-00000-00000-8699-041-0000				\$ -			\$ -
Special Education 01-90120-0-00000-00000-8699-044-0000				\$ -			\$ -
Information Services 01-90120-0-00000-00000-8699-054-0000				\$ -			\$ -
District 01-90120-00000-0-00000-8699-090-0000				\$ -			\$ -
Food & Nutrition Services 01-90120-0-00000-00000-8699-070-0000				\$ -			\$ -
TOTAL GIFTS	\$ 64,655.61	\$ 9,527.63	\$ 909.35	\$ 75,092.59	\$ 5,906.30	\$ -	\$ 5,906.30
			Total Equity Fund 15% Contribs.				
Total Cash Gifts for District:		\$ 9,527.63	\$ 909.35		Total In-Kind Gifts:	\$ -	

TO: BOARD OF EDUCATION
FROM: TIM CUNEO / JANECE L. MAEZ
RE: CONTRACT AMENDMENT #3 FOR REPRESENTATION TO CALIFORNIA
COASTAL COMMISSION AND FIELD LIGHTING – MALIBU HIGH SCHOOL –
CULBERTSON & ASSOCIATES, LLC

ACTION/CONSENT
12/10/09

RECOMMENDATION NO. A.12

It is recommended that the Board of Education approve contract amendment #3 with Culbertson and Associates, LLC, in an amount of \$16,000, for a total contract amount of \$95,000.

Funding Information:

Budgeted: Yes
Fund: 01
Source: General Fund
Account Number: 01-90100-0-00000-82000-5890-010-1500
Description: Other Operating Expenses

Background Information: The board approved a contract to Culbertson & Associates, LLC on August 21, 2008, to expedite and coordinate the review by the California Coastal Commission staff in acquiring a permit for field lighting for the Malibu High School project. Pursuant to the original contract, revisions were made in the scope of work such as strategic advice on overall plans for school improvements with respect to the ESHA and ESHA buffer designations, input on strategic coordination of the scope and extent of lighting, and input on the existing Coastal Development Permit. At the May 21, 2009, board meeting, contract amendment #1 was approved.

ORIGINAL CONTRACT AMOUNT:	\$25,000
<u>CONTRACT AMENDMENT #1:</u>	<u>\$34,000</u>
TOTAL :	\$59,000

COMMENTS: Amendments #2 and 3 are for additional scope and work performed supporting the district's portable, temporary lights at Malibu High School and the Coastal Commission permitting process.

<u>CONTRACT AMENDMENT #2:</u>	<u>\$20,000</u>
TOTAL:	\$79,000

<u>CONTRACT AMENDMENT #3:</u>	<u>\$16,000</u>
TOTAL REVISED CONTRACT AMOUNT:	\$95,000

Of the \$95,000 total contract, \$42,000 (\$25,000 + ½ of \$34,000) is for Measure BB expenditures and \$53,000 (½ of \$34,000 + \$20,000 + \$16,000) is in support of the Coastal Commission permit amendment as part of the process for temporary lights.

MOTION MADE BY: Mr. Snell
SECONDED BY: Mr. Allen
STUDENT ADVISORY VOTE: Aye
AYES: All (6) (Dr. Escarce was absent)
NOES: None (0)

TO: BOARD OF EDUCATION

ACTION/CONSENT

12/10/09

FROM: TIM CUNEO / MICHAEL D. MATTHEWS

RE: EMERGENCY/TEMPORARY PARCEL TAX AND POSSIBLE CAPITAL BOND
FEASIBILITY COMMITTEE BUDGET REQUEST

RECOMMENDATION NO. A.13

It is recommended that the Board of Education approve an additional \$11,500 to further examine the feasibility of an emergency and temporary parcel tax to offset all or a portion of the budget deficit due to the state budget crisis. The board approved the original allocation of \$50,000 for the committee's expenses on August 19, 2009. The committee is requesting these additional funds in order to expand their polling efforts in order to maximize the potential for electoral success of a parcel tax measure.

COMMENTS: The committee will make their final recommendations to the board at the January 14, 2010, board meeting.

***** ***** ***** ***** ***** *****

The board agreed to move this item from Consent to Major.

*Ms. Pye wondered if more than two dollar amounts could be asked of residents during polling.
Mr. Carrey said the professional pollster said three dollar amounts would be recommended for this next round of polling.*

MOTION MADE BY: Mr. Snell
SECONDED BY: Dr. Escarce
STUDENT ADVISORY VOTE: N/A
AYES: All (6) (Dr. Escarce was absent)
NOES: None (0)

TO: BOARD OF EDUCATION

ACTION/CONSENT
12/10/09

FROM: TIM CUNEO / JANECE L. MAEZ / STUART SAM

RE: CONTRACT AMENDMENT #15 FOR REMOVAL ACTION WORKPLAN
IMPLEMENTATION OVERSIGHT – EDISON LANGUAGE ACADEMY – LFR –
MEASURE BB

RECOMMENDATION NO. A.14

It is recommended that the Board of Education approve Contract Amendment #15 with LFR for implementation oversight of the Removal Action Workplan (RAW) for the Edison Language Academy project, Measure BB program, in the amount of \$70,190 for a total not to exceed contract amount of \$531,178.

Funding Information:

Budgeted: Yes
Fund: 21
Source: State School Building Fund
Account Number: 21-00000-0-00000-85000-5802-001-2600
Description: Independent Contractor / Consultant

COMMENTS: Prior to construction of the new school facilities, it is necessary to complete the removal of contaminated soils. The Removal Action Workplan (RAW) prepared by LFR for Edison Language Academy, including the two parcels at 2508 and 2512 Virginia Avenue indicates contaminated soils. This Contract Amendment #15 is to document that the Removal Action Workplan (RAW) is followed, implement the various monitoring and sampling programs and prepare the project closeout report. This portion of this Contract Amendment related to the two Virginia Avenue parcels is contingent on successful acquisition of the properties.

In addition, the amendment also includes an optional task of additional delineation for changing lead standards. Department of Toxic Substances Control (DTSC) is currently in the process of revising its lead standard for school sites and there is a probability that the standard might be reduced, which will result in additional delineation.

ORIGINAL CONTRACT AMOUNT	\$54,300
Contract Amendment #1 (Pipe Risk Eval.,ELA)	26,686
Contract Amendment #2 (Env. Assessment, Lincoln)	50,879
Contract Amendment #3 (Env. Assessment, 4 sites)	162,335
Contract Amendment #4 (Pipe Risk Phase 2, ELA)	32,392
Contract Amendment #5 (Contract Extension)	0
Contract Amendment #6 (Malibu, SAMOHI)	4,200
Contract Amendment #7 (Pipe Risk Stage 2, SAMOHI)	6,770
Contract Amendment #8 (Removal Action Plan,ELA)	21,010
Contract Amendment #9 (Sampling Lincoln)	16,808
Contract Amendment #10 (Sampling Adams)	21,608
Contract Amendment #11 (Sampling RAW Adams)	\$25,320 31,970
Contract Amendment #12 (Sampling RAW Lincoln)	\$31,970 25,320
Contract Amendment #13 (Revised Phase 1, Malibu)	860
Contract Amendment #14 (Edison, RAW, Bid assist)	5,850
<u>Contract Amendment #15 (Edison, RAW, Monitoring) (A.14)</u>	<u>70,190</u>
TOTAL CONTRACT AMOUNT	\$531,178

***** ***** ***** ***** ***** *****

After extensive discussion, Mr. de la Torre MOTIONED to postpone this item until the RFP is awarded.

MOTION MADE BY: Mr. de la Torre
SECONDED BY: Ms. Pye
STUDENT ADVISORY VOTE: Aye
AYES: All (6) (Dr. Escarce was absent for the vote)
NOES: None (0)

TO: BOARD OF EDUCATION

ACTION/CONSENT
12/10/09

FROM: TIM CUNEO / JANECE L. MAEZ / STUART SAM

RE: CONTRACT AMENDMENT #16 FOR REMOVAL ACTION WORKPLAN
IMPLEMENTATION, BID ASSIST AND OVERSIGHT – JOHN ADAMS MIDDLE SCHOOL
– LFR – MEASURE BB

RECOMMENDATION NO. A.15

It is recommended that the Board of Education approve Contract Amendment #16 with LFR for implementation oversight of the Removal Action Workplan (RAW) for the John Adams Middle School project, Measure BB program, in the amount of \$47,680 for a total not to exceed contract amount of \$578,858.

Funding Information:

Budgeted: Yes
Fund: 21
Source: State School Building Fund
Account Number: 21-00000-0-00000-85000-5802-011-2600
Description: Independent Contractor / Consultant

COMMENTS: Prior to construction of the new school facilities, it is necessary to complete the removal of contaminated soils. The Removal Action Workplan (RAW) prepared by LFR for John Adams Middle School, indicates contaminated soils. This Contract Amendment #16 is to assist in the preparation of the bid documents, participate in the bid walk, assist with bid evaluation, document that the Removal Action Workplan (RAW) is followed, implement the various monitoring and sampling programs and prepare the project closeout report.

ORIGINAL CONTRACT AMOUNT	\$54,300
Contract Amendment #1 (Pipe Risk Eval., ELA)	26,686
Contract Amendment #2 (Env. Assessment, Lincoln)	50,879
Contract Amendment #3 (Env. Assessment, 4 sites)	162,335
Contract Amendment #4 (Pipe Risk Phase 2, ELA)	32,392
Contract Amendment #5 (Contract Extension)	0
Contract Amendment #6 (Malibu, SAMOHI)	4,200
Contract Amendment #7 (Pipe Risk Stage 2, SAMOHI)	6,770
Contract Amendment #8 (Removal Action Plan, ELA)	21,010
Contract Amendment #9 (Sampling Lincoln)	16,808
Contract Amendment #10 (Sampling Adams)	21,608
Contract Amendment #11 (Sampling RAW Adams)	\$25,320 31,970
Contract Amendment #12 (Sampling RAW Lincoln)	\$31,970 25,320
Contract Amendment #13 (Revised Phase 1, Malibu)	860
Contract Amendment #14 (Edison, RAW, Bid assist)	5,850
Contract Amendment #15 (Edison, RAW, Monitoring) (A.14)	70,190
<u>Contract Amendment #16 (Adams, RAW, Bid assist, monitoring) (A.15)</u>	<u>47,680</u>
TOTAL CONTRACT AMOUNT	\$578,858

MOTION MADE BY: Mr. de la Torre to award \$5,000 of the \$47,680 until the full scope of work was determined.

SECONDED BY: Ms. Pye

STUDENT ADVISORY VOTE: Aye

AYES: All (6) (Dr. Escarce was absent for the vote)

NOES: None (0)

TO: BOARD OF EDUCATION

ACTION/CONSENT
12/10/09

FROM: TIM CUNEO / JANECE L. MAEZ / STUART SAM

RE: CONTRACT AMENDMENT #17 FOR REMOVAL ACTION WORKPLAN
IMPLEMENTATION, BID ASSIST AND OVERSIGHT – LINCOLN MIDDLE SCHOOL –
LFR – MEASURE BB

RECOMMENDATION NO. A.16

It is recommended that the Board of Education approve Contract Amendment #17 with LFR for implementation oversight of the Removal Action Workplan (RAW) for the Lincoln Middle School project, Measure BB program, in the amount of \$34,170 for a total not to exceed contract amount of \$613,028.

Funding Information:

Budgeted: Yes
Fund: 21
Source: State School Building Fund
Account Number: 21-00000-0-00000-85000-5802-012-2600
Description: Independent Contractor / Consultant

COMMENTS: Prior to construction of the new school facilities, it is necessary to complete the removal of contaminated soils. The Removal Action Workplan (RAW) prepared by LFR for Lincoln Middle School, indicates contaminated soils. This Contract Amendment #17 is to assist in the preparation of the bid documents, participate in the bid walk, assist with bid evaluation, document that the Removal Action Workplan (RAW) is followed, implement the various monitoring and sampling programs and prepare the project closeout report.

ORIGINAL CONTRACT AMOUNT	\$54,300
Contract Amendment #1 (Pipe Risk Eval.,ELA)	26,686
Contract Amendment #2 (Env. Assessment, Lincoln)	50,879
Contract Amendment #3 (Env. Assessment, 4 sites)	162,335
Contract Amendment #4 (Pipe Risk Phase 2, ELA)	32,392
Contract Amendment #5 (Contract Extension)	0
Contract Amendment #6 (Malibu, SAMOHI)	4,200
Contract Amendment #7 (Pipe Risk Stage 2, SAMOHI)	6,770
Contract Amendment #8 (Removal Action Plan,ELA)	21,010
Contract Amendment #9 (Sampling Lincoln)	16,808
Contract Amendment #10 (Sampling Adams)	21,608
Contract Amendment #11 (Sampling RAW Adams)	\$25,320 31,970
Contract Amendment #12 (Sampling RAW Lincoln)	\$31,970 25,320
Contract Amendment #13 (Revised Phase 1, Malibu)	860
Contract Amendment #14 (Edison, RAW, Bid assist)	5,850
Contract Amendment #15 (Edison, RAW, Monitoring) (A.14)	70,190
Contract Amendment #16 (Adams, RAW, Bid assist, monitoring) (A.15)	47,680
Contract Amendment #17 (Lincoln, RAW, Bid assist, monitoring) (A.16)	34,170
<u>TOTAL CONTRACT AMOUNT</u>	<u>\$613,028</u>

MOTION MADE BY: Mr. de la Torre to award \$5,000 of the \$34,170 until the full scope of work was determined.

SECONDED BY: Ms. Pye

STUDENT ADVISORY VOTE: Aye

AYES: All (6) (Dr. Escarce was absent for the vote)

NOES: None (0)

TO: BOARD OF EDUCATION

ACTION/CONSENT

12/10/09

FROM: TIM CUNEO / JANECE L. MAEZ / STUART A. SAM

RE: CONTRACT AMENDMENT #6 FOR ENVIRONMENTAL MANAGEMENT SERVICES – EDISON LANGUAGE ACADEMY PROJECT – ATC ASSOCIATES – MEASURE BB

RECOMMENDATION NO. A.17

It is recommended that the Board of Education approve ATC Associates Contract Amendment #6 to provide environmental management (site monitoring) for construction activities for Edison Language Academy Project, 2508 and 2512 Virginia Avenue properties only, in the amount of \$4,012, for a total contract amount of \$179,774, Measure BB projects. This Contract Amendment is contingent on successful acquisition of the properties.

Funding Information

Budgeted: Yes
Fund: 21
Source: State School Building Fund
Account Number: 21-00000-0-85000-85000-5802-001-2600
Description: Building Improvement

COMMENTS: Prior to construction activities at Edison Language Academy Project, the two properties on Virginia Avenue (2508 & 2512), must be demolished. Part of the work of the demolition contract is to remove any Hazardous Materials in those buildings.

The abatement of hazardous materials requires a licensed testing and monitoring lab be present to verify that all laws and regulations are being observed by the abatement contractor, perform sample testing of the air, and to test and clear the abated areas. The district contracted ATC Associates to perform the preliminary investigative testing reports and prepare the abatement scope of work for this project under CA #3 at the 7/16/2009 board meeting.

This Contract Amendment #6 for \$4,012.00 is for the third party monitoring and testing during the removal of the hazardous materials identified in the completed report at 2508 & 2512 Virginia Avenue.

ORIGINAL CONTRACT AMOUNT (Estimate)	\$ 0
CONTRACT AMENDMENT #1 (8 Sites, Net Add to original estimate \$1,138)	101,138
CONTRACT AMENDMENT #2 (3 Sites)	42,647
CONTRACT AMENDMENT #3 (2508 & 2512 Virginia Ave, survey & specs)	7,010
CONTRACT AMENDMENT #4 (Webster Elem, FA project)	13,152
CONTRACT AMENDMENT #5 (Point Dume MSE, Gas/Heat project)	11,815
<u>CONTRACT AMENDMENT #6 (2508 & 2512 Virginia, Monitoring) A.17</u>	<u>4,012</u>
TOTAL CONTRACT AMOUNT:	\$179,774

MOTION MADE BY: Mr. Snell
SECONDED BY: Mr. Allen
STUDENT ADVISORY VOTE: Aye
AYES: All (6) (Dr. Escarce was absent)
NOES: None (0)

TO: BOARD OF EDUCATION

ACTION/CONSENT

12/10/09

FROM: TIM CUNEO / JANECE L. MAEZ / STUART SAM

RE: CONTRACT AMENDMENT #26 FOR INCREASE SCOPE FOR TOPOGRAPHIC SURVEYS AND DIGITAL MAPPING FOR ADDITIONAL SURVEY WORK – EDISON LANGUAGE ACADEMY – PSOMAS – MEASURE BB

RECOMMENDATION NO. A.18

It is recommended that the Board of Education award Contract Amendment #26 to PSOMAS for additional Design survey services for 2508 & 2512 Virginia Avenue properties, Edison Language Academy Project, for the Measure BB program in the amount of \$10,848 for a total contract amount of \$1,130,369. This Contract Amendment is contingent on successful acquisition of the properties.

Funding Information

Budgeted: Yes
Fund: 21
Source: State School Building Fund
Account Number: 21-00000-0-00000-85000-5802-001-2600
Description: Independent Contractor / Consultant

COMMENTS: Surveying services is needed for 2508 & 2512 Virginia Avenue properties to support the proposed design in the project site area.

This Contract Amendment #26, for \$10,848, is for design survey at Edison Language Academy.

(Continued on next page)

ORIGINAL CONTRACT AMOUNT	\$ 249,450
Contract Amendment#1 (Survey, 4 Sites)	92,200
Contract Amendment#2 (Samohi Utilities Map)	39,600
Contract Amendment#3 (Survey, 2 Sites)	38,000
Contract Amendment#4 (Survey, 4 Sites)	63,000
Contract Amendment#5 (Survey, 4 Sites)	99,900
Contract Amendment#6 (Survey/Utilities Mapping, 4 Sites)	84,500
Contract Amendment#7 (Survey, 5 Sites)	72,600
Contract Amendment #8 (MMHS, Sewer, Easement)	63,500
Contract Amendment #9 (Samohi, Olympic)	99,000
Contract Amendment #10 (Samohi survey)(A.16)	7,500
Contract Amendment #11 (Lincoln survey)(A.17)	15,000
Contract Amendment #12 (MMHS survey)	5,500
Contract Amendment #13 (Webster survey)	22,500
Contract Amendment #14 (MMHS survey)	7,500
Contract Amendment #15 (MMHS slope analysis)	1,800
Contract Amendment #16 (JAMS design survey)	8,379
Contract Amendment #17 (MMHS design survey)	29,246
Contract Amendment #18 (PDES survey)	23,574
Contract Amendment #19 (Samohi)	24,232
Contract Amendment #20 (MMHS)	6,795
Contract Amendment #21 (Webster)	22,081
Contract Amendment #22 (MMHS)	2,560
Contract Amendment #23 (Samohi)	17,048
Contract Amendment #24 (JAMS confirmation survey)	2,500
Contract Amendment #25 (JAMS underground sewer survey)	21,556
Contract Amendment #26 (ELA design survey)	10,848
TOTAL CONTRACT AMOUNT	\$1,130,369

MOTION MADE BY: Mr. Snell
 SECONDED BY: Mr. Allen
 STUDENT ADVISORY VOTE: Aye
 AYES: All (6) (Dr. Escarce was absent)
 NOES: None (0)

TO: BOARD OF EDUCATION

ACTION/CONSENT

12/10/09

FROM: TIM CUNEO / JANECE L. MAEZ / STUART SAM

RE: CONTRACT AMENDMENT #9 FOR GEOTECHNICAL INVESTIGATION & REPORT SERVICES – OLYMPIC HIGH SCHOOL CAMPUS IMPROVEMENT PROJECT – LEIGHTON CONSULTING – MEASURE BB

RECOMMENDATION NO. A.19

It is recommended that the Board of Education approve Contract Amendment #9 to Leighton Consulting for Geotechnical Investigation and Report Services for Olympic High School Campus Improvement Project in the amount of \$21,600, for a total contract amount of \$132,900, Measure BB projects.

Funding Information

Budgeted: Yes
Fund: 21
Source: State School Building Fund
Account Number: 21-00000-0-85000-85000-5802-010-2600
Description: Building Improvement

COMMENTS: The Board of Education previously approved Leighton as one of the three (3) pre-qualified geotechnical consultants on the cities of Santa Monica and Malibu. The firms are being assigned projects as the need arises and depending on their familiarity with and availability for the assignment.

This Contract Amendment No. 9 is to conduct geotechnical exploration and to prepare geotechnical recommendations for the Olympic High School project.

CONTRACT AMENDMENT #1 (Edison)	\$19,000
CONTRACT AMENDMENT #2 (Edison)	5,000
CONTRACT AMENDMENT #3 (Edison)	7,000
CONTRACT AMENDMENT #4 (Edison)	5,000
CONTRACT AMENDMENT #5 (Malibu)	50,500
CONTRACT AMENDMENT #6 (Malibu)	3,000
CONTRACT AMENDMENT #7 (Webster)	9,400
CONTRACT AMENDMENT #8 (Malibu)	12,400
CONTRACT AMENDMENT #9 (Olympic)	21,600
<u>TOTAL</u>	<u>\$132,900</u>

MOTION MADE BY: Mr. Snell
SECONDED BY: Mr. Allen
STUDENT ADVISORY VOTE: Aye
AYES: All (6) (Dr. Escarce was absent)
NOES: None (0)

TO: BOARD OF EDUCATION

ACTION/CONSENT

12/10/09

FROM: TIM CUNEO / JANECE L. MAEZ / STUART A. SAM

RE: CONTRACT AMENDMENT #2 FOR ADDITIONAL DATA AND TELECOM CONSULTING SERVICES – DISTRICT WIDE – SPARKY DATA AND TELECOM – MEASURE BB

RECOMMENDATION NO. A.20

It is recommended that the Board of Education approve Contract Amendment #2 with Sparky Data and Telecom to provide for additional Data and Telecom Consulting Services for all SMMUSD sites (District Wide), in the amount of \$5,600, for a total contract amount of \$17,600.

Funding Information

Budgeted: Yes
Fund: 21
Source: Measure BB
Account Number: 21-00003-0-00000-85000-5802-054-2600
Description: Consultant Services

COMMENTS: The Board of Education previously approved Sparky Data and Telecom for consulting services to assist with District Wide VOIP telephone system and centralize voicemail design and implementation for SMMUSD with AT&T affiliates.

Contract Amendment #1 was approved on October 15, 2009 and was for \$4,000 was for additional scope for Sparky Data and Telecom to survey school sites and create a list of CAT5 wiring needs, where a phone exists in a location but no data jack is available for the new VOIP device.

Contract Amendment # 2 amounts to \$5,600 to provide for phones that are over and above the original estimate dated on 7/02/09. This will serve to continue to export raw data of existing users and devices into "feature set" Excel spreadsheets and assist in design.

It will also provide for the reconfiguration of Edison's existing PBX and program additional trunks as necessary.

ORIGINAL CONTRACT – VOIP	\$8,000
CONTRACT AMENDMENT #1	4,000
CONTRACT AMENDMENT #2	5,600
TOTAL:	\$17,600

MOTION MADE BY: Mr. Snell
SECONDED BY: Mr. Allen
STUDENT ADVISORY VOTE: Aye
AYES: All (6) (Dr. Escarce was absent)
NOES: None (0)

TO: BOARD OF EDUCATION

ACTION/CONSENT

12/10/09

FROM: TIM CUNEO / JANECE L. MAEZ / STUART A. SAM

RE: CONTRACT AMENDMENT #19 FOR ADDITIONAL ARCHITECTURAL SERVICES FOR UPGRADE OF FIRE PROTECTION SYSTEMS – DISTRICT OFFICE DATA CENTER – WWCOT – MEASURE BB

RECOMMENDATION NO. A.21

It is recommended that the Board of Education approve Contract Amendment #19 with WWCOT to provide architectural and engineering services for investigative and discovery phase as related to close-out without certification of a prior DSA application at the District Offices, as part of the District Office Data Center project, in an amount of \$13,181 for a total contract amount of \$3,987,170.

Funding Information

Budgeted: Yes
Fund: 21
Source: Building Fund
Account Number: 21-00000-0-00000-85000-5802-050-2600
Description: Consultant Services

COMMENTS: The Division of State Architect is mandating that all previous applications on a project scope area be certified before new approval is issued. During the Division of State Architect (DSA) review and approval process for the Data Center project at District Offices, it was determined that the building has a prior application on file with DSA (A# 03-046451) which has been closed without certification. To prevent delays on the Data Center project, WWCOT has been asked to study the existing conditions and prepare recommendations.

The certification of prior DSA application at the District Office Building was not initially anticipated in the project and not included in the original Measure BB project scope.

This WWCOT Contract Amendment #19, for \$13,181, is for architectural and engineering services for investigative and discovery phase as related to close-out without certification of a prior DSA application at the District Office Building. The revised contract total will be \$3,987,170.

(Continued on next page)

ORIGINAL CONTRACT AMOUNT (Prog./Schematic Design)	\$ 936,032
CONTRACT AMENDMENT #1 (McKinley SDC, Roosevelt Preschool)	131,663
CONTRACT AMENDMENT #2 (Data Center)	99,420
CONTRACT AMENDMENT #3 (DD/CD/CA)	2,195,078
CONTRACT AMENDMENT #4 (Roosevelt Revised Design)	70,435
CONTRACT AMENDMENT #5 (Data Center structural revisions)	6,925
CONTRACT AMENDMENT #6 (McKinley Safety Proj.)	168,697
CONTRACT AMENDMENT #7 (Lincoln MS Revised Design)	92,592
CONTRACT AMENDMENT #8 (Lincoln Fire Protection)	17,538
CONTRACT AMENDMENT #9 (Landscape and Planting Standards)	30,245
CONTRACT AMENDMENT #10 (Add'l Landscape Standards)	5,200
CONTRACT AMENDMENT #11 (PV Standard Specs)	26,100
CONTRACT AMENDMENT #12 (Lincoln Interim housing)	31,755
CONTRACT AMENDMENT #13 (Lincoln sewer line)	15,569
CONTRACT AMENDMENT #14 (Lincoln sprinklers at E)	54,933
CONTRACT AMENDMENT #15 (Data Center fire protection)	23,782
CONTRACT AMENDMENT #16 (Lincoln trash enclosure design)	15,000
CONTRACT AMENDMENT #17 (Lincoln additional hydrant)	3,989
CONTRACT AMENDMENT #18 (Data Center, Fire Protection, existing District Office building)	49,036
CONTRACT AMENDMENT #19 (Data Center, Previous DSA Application Certification Study)	13,181
TOTAL CONTRACT AMOUNT	\$3,987,170

MOTION MADE BY: Mr. Snell
SECONDED BY: Mr. Allen
STUDENT ADVISORY VOTE: Aye
AYES: All (6) (Dr. Escarce was absent)
NOES: None (0)

TO: BOARD OF EDUCATION

ACTION/CONSENT

12/10/09

FROM: TIM CUNEO / MICHAEL D. MATTHEWS

RE: CERTIFICATED PERSONNEL – Elections, Separations

RECOMMENDATION NO. A.22

Unless otherwise noted, all items are included in the 2009/2010 approved budget.

ADDITIONAL ASSIGNMENTS

ADAMS MIDDLE SCHOOL

Asher, Jeanette	2 hrs @\$40.46	11/2/09-4/27/10	Est Hrly/\$ 81
Averett, David	15 hrs @\$40.46	11/2/09-4/27/10	Est Hrly/\$607
Hart, Matt	2 hrs @\$40.46	11/2/09-4/27/10	Est Hrly/\$ 81
Kilpatrick, Genevieve	2 hrs @\$40.46	11/2/09-4/27/10	Est Hrly/\$ 81
Kusion, Alex	15 hrs @\$40.46	11/2/09-4/27/10	Est Hrly/\$607
Murphy, Letitia	15 hrs @\$40.46	11/2/09-4/27/10	Est Hrly/\$607
Meyer, Kimberly	15 hrs @\$40.46	11/2/09-4/27/10	Est Hrly/\$607
Toppel, Diane	15 hrs @\$40.46	11/2/09-4/27/10	<u>Est Hrly/\$607</u>
TOTAL ESTABLISHED HOURLY			\$3,278

Comment: After-School Library Supervision
01-Reimbursed by PTA

Post, Joel	9.88 hrs @\$40.46	11/13/09-11/15/09	<u>Est Hrly/\$400</u>
TOTAL ESTABLISHED HOURLY			\$400

Comment: 6th Grade Catalina Trip Chaperone
01-Tier III Programs Cat Flex

EDISON ELEMENTARY SCHOOL

Rankin, Nancy	3 hrs @\$40.46	11/10/09-12/1/09	<u>Est Hrly/\$121</u>
TOTAL ESTABLISHED HOURLY			\$121

Comment: Kindergarten Parent Workshops
01-Gifts – Equity Fund

HUMAN RESOURCES

Beeman-Solano, Amy	20 hrs @\$40.46	9/4/09-6/25/10	Est Hrly/\$ 809
Bersch, Kristen	40 hrs @\$40.46	9/4/09-6/25/10	Est Hrly/\$1,618
Bowman-Smith, Carla	40 hrs @\$40.46	9/4/09-6/25/10	Est Hrly/\$1,618
Chacon, Martha	20 hrs @\$40.46	9/4/09-6/25/10	Est Hrly/\$ 809
Daws, Tracy	80 hrs @\$40.46	9/4/09-6/25/10	Est Hrly/\$3,237
De la Rosa, Mary	40 hrs @\$40.46	9/4/09-6/25/10	Est Hrly/\$1,618
Henderson, Luke	40 hrs @\$40.46	9/4/09-6/25/10	Est Hrly/\$1,618
Jones, Julie	16 hrs @\$40.46	9/4/09-6/25/10	Est Hrly/\$ 647
Chon, Lee	20 hrs @\$40.46	9/4/09-6/25/10	Est Hrly/\$ 809
Loopesko, Lorna	40 hrs @\$40.46	9/4/09-6/25/10	Est Hrly/\$1,618
Macon, Tristen	80 hrs @\$40.46	9/4/09-6/25/10	Est Hrly/\$3,237
Matthews, Jill	30 hrs @\$40.46	9/4/09-6/25/10	Est Hrly/\$1,214
Mulligan, Michael	40 hrs @\$40.46	9/4/09-6/25/10	Est Hrly/\$1,618
Murphy, Letitia	40 hrs @\$40.46	9/4/09-6/25/10	Est Hrly/\$1,618
Panish, Adam	30 hrs @\$40.46	9/4/09-6/25/10	Est Hrly/\$1,214
Pust, Jennifer	40 hrs @\$40.46	9/4/09-6/25/10	Est Hrly/\$1,618
Semik, Renee	40 hrs @\$40.46	9/4/09-6/25/10	Est Hrly/\$1,618
Thatcher, Cynthia	40 hrs @\$40.46	9/4/09-6/25/10	Est Hrly/\$1,618
Thoreson, Bonita	80 hrs @\$40.46	9/4/09-6/25/10	Est Hrly/\$3,237
Urias, Rebecca	40 hrs @\$40.46	9/4/09-6/25/10	<u>Est Hrly/\$1,618</u>
TOTAL ESTABLISHED HOURLY			\$33,011

Comment: BTSA Support Providers
01-Tier III Programs Cat Flex

MCKINLEY ELEMENTARY SCHOOL

Duran, Concepcion	5 hrs @\$40.46	9/5/09-9/6/09	Est Hrly/\$202
Mowry, Kristen	5 hrs @\$40.46	9/5/09-9/6/09	Est Hrly/\$202
Treuenfels, Therese	5 hrs @\$40.46	9/5/09-9/6/09	Est Hrly/\$202
TOTAL ESTABLISHED HOURLY			\$606

Comment: 3rd Grade Houghton-Mifflin preparation
01-Title I - ARRA

SANTA MONICA HIGH SCHOOL

Chacon, Martha	30 hrs @\$66.17	9/4/09-10/19/09	Own Hrly/\$1,985
Lipetz, Sarah	30 hrs @\$56.31	9/4/09-10/19/09	Own Hrly/\$1,689
Morse, Kevin	30 hrs @\$48.39	9/4/09-10/19/09	Own Hrly/\$1,452
Pettes, Maron	30 hrs @\$53.66	9/4/09-10/19/09	Own Hrly/\$1,610
Reardon, Marybeth	30 hrs @\$61.20	9/4/09-10/19/09	Own Hrly/\$1,836
TOTAL OWN HOURLY			\$8,572

Comment: 6th Period Assignment
01-Tier III Programs Cat Flex

Corrigan, Mike	144 hrs @\$40.46	9/21/09-6/25/10	Est Hrly/\$5,826
TOTAL ESTABLISHED HOURLY			\$5,826

Comment: After School Jazz Band
01-Gifts

Blagojevic, Milos	1.50 hrs @\$40.46	10/5/09-10/22/09	Est Hrly/\$61
Doughty, Lindsay	0.75 hrs @\$40.46	10/5/09-10/22/09	Est Hrly/\$30
Dunn, George	0.75 hrs @\$40.46	10/5/09-10/22/09	Est Hrly/\$30
Hecht, James	0.75 hrs @\$40.46	10/5/09-10/22/09	Est Hrly/\$30
Veral, Ramon	1.50 hrs @\$40.46	10/5/09-10/22/09	Est Hrly/\$61
TOTAL ESTABLISHED HOURLY			\$212

Comment: Math Dept Meetings
01-Tier III Programs Cat Flex

Silvestri, Marisa	10 hrs @\$40.46	9/1/09-6/25/10	Est Hrly/\$405
TOTAL ESTABLISHED HOURLY			\$405

Comment: Freshman Seminar Meetings
01-Unrestricted Resources

Reardon, Marybeth	12 hrs @\$40.46	5/18/09-6/4/09	Est Hrly/\$486
TOTAL ESTABLISHED HOURLY			\$486

Comment: AP Physics Preparation
01-Unrestricted Resource

Barraza, Pete	\$40.46, as needed	9/1/09-6/25/10	Est Hrly/\$----
Bitner, Beth	\$40.46, as needed	9/1/09-6/25/10	Est Hrly/\$----
Black, Mark	\$40.46, as needed	9/1/09-6/25/10	Est Hrly/\$----
Cierra, Jorge	\$40.46, as needed	9/1/09-6/25/10	Est Hrly/\$----
Hinojosa, Judith	\$40.46, as needed	9/1/09-6/25/10	Est Hrly/\$----
Jimenez, Jaime	\$40.46, as needed	9/1/09-6/25/10	Est Hrly/\$----
Lipetz, Sarah	\$40.46, as needed	9/1/09-6/25/10	Est Hrly/\$----
Mabrey, Matt	\$40.46, as needed	9/1/09-6/25/10	Est Hrly/\$----
McGee, Richard	\$40.46, as needed	9/1/09-6/25/10	Est Hrly/\$----
Pitts, Greg	\$40.46, as needed	9/1/09-6/25/10	Est Hrly/\$----
Roman, Bertha	\$40.46, as needed	9/1/09-6/25/10	Est Hrly/\$----
Shafiey, Mariam	\$40.46, as needed	9/1/09-6/25/10	Est Hrly/\$----
Simone, Laura	\$40.46, as needed	9/1/09-6/25/10	Est Hrly/\$----
TOTAL ESTABLISHED HOURLY			\$----

Comment: Saturday School
01- Tier III Programs Cat Flex

ADDITIONAL ASSIGNMENT – EXTRA DUTY UNITS**MALIBU HIGH SCHOOL – Middle School Activities**

<u>Name</u>	<u>Rate</u>	<u>Assignment</u>	<u>Effective</u>	<u>Not to Exceed</u>
Bixler, William	3 EDU	Orchestra	9/09-1/10	\$ 768
Cowgill, Elizabeth	1 EDU	Scholarship Adv	9/09-1/10	\$ 256
Jacobs, Ari	6 EDU	Student Council	9/09-1/10	\$1,536
Jones, Julie	3 EDU	Student Activities	9/09-1/10	\$ 768
Leonard, Brigitte	5 EDU	Drama	9/09-1/10	\$1,280
Loch, Amy	3 EDU	Vocal Music	9/09-1/10	\$ 768
TOTAL EDUS				\$5,376

MALIBU HIGH SCHOOL – High School Activities

<u>Name</u>	<u>Rate</u>	<u>Assignment</u>	<u>Effective</u>	<u>Not to Exceed</u>
Andino, Melisa	13 EDU	Pep Squad	9/09-1/10	\$3,328
Bixler, William	3 EDU	Orchestra	9/09-1/10	\$ 768
Bowman-Smith, Carla	5 EDU	Yearbook	9/09-1/10	\$1,280
Chi, Ah Young	5 EDU	Scholarship Adv	9/09-1/10	\$1,280
Cowgill, Elizabeth	3 EDU	Student Activities	9/09-1/10	\$ 768
Dahm, Katie	1 EDU	Scholarship Adv	9/09-1/10	\$ 256
Ervin, Jordan	3 EDU	Student Activities	9/09-1/10	\$ 768
Gonzalez, Jennifer	1 EDU	Student Activities	9/09-1/10	\$ 256
Loch, Amy	3 EDU	Vocal Music	9/09-1/10	\$ 768
Mayle, Alexander	2 EDU	Student Activities	9/09-1/10	\$ 512
Meyer, Andrew	12 EDU	Student Council	9/09-1/10	\$3,072
Miller, Jennifer	5 EDU	Newspaper	9/09-1/10	\$1,280
Neier, Christopher	13 EDU	Athletic Director	9/09-1/10	\$3,328
Owens, Rebecca	13 EDU	Student Activities	9/09-1/10	\$3,328
Panish, Adam	5 EDU	Academic Decathlon	9/09-1/10	\$1,280
Panish, Adam	3 EDU	Student Activities	9/09-1/10	\$ 768
Plaia, Jodi	10 EDU	Drama	9/09-1/10	\$2,560
Prunier, Sarah	3 EDU	Senior Advisor	9/09-1/10	\$ 768
Sferra, Luke	3 EDU	Senior Advisor	9/09-1/10	\$ 768
TOTAL EDUS				\$27,136

MALIBU HIGH SCHOOL – Fall Athletics

<u>Name</u>	<u>Rate</u>	<u>Assignment</u>	<u>Effective</u>	<u>Not to Exceed</u>
Mulligan, Michael	12 EDU	Fr/So Boys Water Polo	9/09-11/09	\$3,072
Mulligan, Michael	13 EDU	Var. Boys Water Polo	9/09-11/09	\$3,328
Ryan, Sean	12 EDU	Asst Var. Football	9/09-11/09	\$3,072
TOTAL EDUS				\$9,472

MALIBU HIGH SCHOOL – Winter Athletics

<u>Name</u>	<u>Rate</u>	<u>Assignment</u>	<u>Effective</u>	<u>Not to Exceed</u>
Meyer, Andrew	13 EDU	Var. Girls BB	11/09-1/10	\$3,328
Miller, Patrick	12 EDU	JV Boys BB	11/09-1/10	\$3,072
Segesman, Timothy	13 EDU	Var. Girls Water Polo	11/09-1/10	\$3,328
TOTAL EDUS				\$9,728

HOURLY TEACHERS**JOHN ADAMS MIDDLE SCHOOL**

Hsu, Grace	43.4 hrs @\$40.46	10/1/09-6/25/10	Est Hrly/\$1,756
TOTAL ESTABLISHED HOURLY			\$1,756

Comment: Instrumental Music Coach
01-Reimbursed by ASB

PT DUME ELEMENTARY SCHOOL

Loch, Amy	70.5 hrs @\$40.46	10/12/09-4/30/10	Est Hrly/\$2,852
		TOTAL ESTABLISHED HOURLY	\$2,852
Comment:	Choral Music Instruction 01-Reimbursed by PTA		

Van Note, Vonnie	690 hrs @\$40.46	10/12/09-6/3/10	Est Hrly/\$27,917
		TOTAL ESTABLISHED HOURLY	\$27,917
Comment:	Reading Specialist 01-Reimbursed by PTA		

OLYMPIC HIGH SCHOOL

Hensley, Kristen	183 hrs @40.46	9/9/09-6/25/10	Est Hrly/\$7,404
		TOTAL ESTABLISHED HOURLY	\$7,404
Comment:	Teacher for ARRA contract 01-TPP-ARRA		

SANTA MONICA HIGH SCHOOL

McManus, Kirsten	580 hrs @\$40.46	11/12/09-6/25/10	Est Hrly/\$23,467
St John, Katelyn	580 hrs @\$40.46	11/12/09-6/25/10	Est Hrly/\$23,467
		TOTAL ESTABLISHED HOURLY	\$46,934
Comment:	Tutors 01-Gifts – Equity Fund		

Ellis, Holly	136 hrs @\$40.46	11/2/09-11/25/09	Est Hrly/\$5,503
		TOTAL ESTABLISHED HOURLY	\$5,503
Comment:	Substitute for open Special Ed position 01-Special Education		

STUDENT SERVICES

Johnson, Lisa	\$40.46, as needed	9/9/09-6/30/10	Est Hrly/\$----
		TOTAL ESTABLISHED HOURLY	\$----
Comment:	Home Instructor 01-Special Education – 50% 01-Unrestricted Resource – 50%		

ADULT EDUCATION

Maldonado Jr., Eric	132 hrs @\$45.34	11/30/09-6/30/10	Est Hrly/\$5,985
		TOTAL ESTABLISHED HOURLY	\$5,985
Comment:	ESL Clases 11-231: ABE/ESL/ESL Ctzn, VESL/VABE - 64% 11-PL105-22 Engl Literacy/Civics -36%		

TOTAL ESTABLISHED HOURLY, OWN HOURLY AND EXTRA DUTY UNITS = \$202,980

ELECTIONS

<u>SUBSTITUTE TEACHERS</u>	<u>Effective</u>
<u>LONG-TERM SUBSTITUTES</u>	
(@\$210.00 Daily Rate)	
Brewer, Christine	11/2/09
Brown, Kim	11/2/09
Rowland, Carla	10/12/09

Schack, Trevor	10/26/09
Sinfield, Paul	10/19/09

PREFERRED SUBSTITUTES

(@\$162.00 Daily Rate)

Auer, Kimberly	10/16/09
Bailey, Robert	10/21/09
Karels, Kloie	11/5/09
Quine, Nicki	10/23/09
Williams, Alma	10/16/09

REGULAR DAY-TO-DAY SUBSTITUTES

(@\$138.00 Daily Rate)

Arguello, Devin	11/17/09
Battung, Jason	11/20/09
Bower, J. Alan	11/19/09
Langley, Bhakti	11/25/09
LoGreco, Vincent	11/25/09
Scott, Beverly	11/20/09

LEAVE OF ABSENCE (with pay)

<u>Name/Location</u>	<u>Effective</u>
Debeeck, Elizabeth Lincoln MS	11/23/09-1/20/10 [maternity]

LEAVE OF ABSENCE (without pay)

<u>Name/Location</u>	<u>Effective</u>
Anderson, Tamara Cabrillo Elementary	11/7/09-11/30/09 [CFRA]
Anderson, Tamara Cabrillo Elementary	12/1/09-6/25/10 [child care]
Debeeck, Elizabeth Lincoln MS	1/21/10-3/24/10 [CFRA]

DECEASED

<u>Name/Location</u>	<u>Effective</u>
Hedrick, Donald Santa Monica High School	11/21/09

MOTION MADE BY: Mr. Snell
 SECONDED BY: Mr. Allen
 STUDENT ADVISORY VOTE: Aye
 AYES: All (6) (Dr. Escarce was absent)
 NOES: None (0)

TO: BOARD OF EDUCATION
 FROM: TIM CUNEO / WILBERT YOUNG
 RE: CLASSIFIED PERSONNEL - MERIT

ACTION/CONSENT
 12/10/09

RECOMMENDATION NO. A.23

It is recommended that the following appointments for Classified Personnel (merit system) be approved and/or ratified. All personnel will be properly elected in accordance with District policies and salary schedules.

<u>ELECTION</u>		<u>EFFECTIVE DATE</u>
Flores, Ana Facilities Maint	Administrative Asst 8 Hrs/12 Mo/Range: 29 Step: A	11/2/09
Griego, Nicholas Sp Ed/Pre-School	Inst Asst – Special Ed 4.5 Hrs/SY/Range: 20 Step: D	11/19/09
Jenson, Diane John Adams MS	Inst Asst – Special Ed 5 Hrs/SY/Range: 20 Step: A	11/23/09
LeDuff, Kelle Special Education	Job Developer 6 Hrs/10 Mo/Range: 25 Step: A	11/19/09
Rivero, Nestor JAMS/Food Svcs	Cafeteria Worker I 3 Hrs/SY/Range: 11 Step: A	11/9/09
Stover-Burlakova, Svetlana Malibu HS	Inst Asst – Special Ed 6 Hrs/SY/Range: 20 Step: D	11/3/09
Valle, Dahlia Rogers Elementary	Inst Asst – Classroom 3 Hrs/SY/Range: 18 Step: A	11/23/09
<u>PROVISIONAL ASSIGNMENT</u>		<u>EFFECTIVE DATE</u>
Henderson, Jacob Special Education	Inst Asst – Sign Lang Interpreter	11/1/09-1/31/10
<u>RE-EMPLOYMENT</u>		<u>EFFECTIVE DATE</u>
Curran, Megan Pt Dume Elementary	Inst Asst – Classroom 3 Hrs/SY/Range: 18 Step: B	11/18/09
<u>TEMP/ADDITIONAL ASSIGNMENTS</u>		<u>EFFECTIVE DATE</u>
Alvarez, Guillermina Roosevelt/Food Svcs	Cafeteria Worker I	9/8/09-6/30/10
Crawford, Cynthia John Adams MS	Library Assistant	11/2/09-4/27/09
Curtis, Kathleen Facility Permits	Campus Security Officer	11/2/09-6/30/10
Curtis, Kathleen Theater Operations	Campus Security Officer	11/2/09-6/30/10
Gardea-Perez, Guadalupe Rogers Elementary	Community Liaison	10/19/09-6/30/10

Gibson, Leticia McKinley/Food Svcs	Cafeteria Worker I	9/8/09-6/30/10
Gonzalez, Hector Operations/Grounds	Sprinkler Repair Tech	7/1/09-6/30/10
Gonzalez, Martha Edison/Food Svcs	Cafeteria Worker I	9/8/09-6/30/10
Havas, Mai Li Franklin/Food Svcs	Cafeteria Worker I	9/8/09-6/30/10
Islas, Gloria Grant/Food Svcs	Cafeteria Worker I	9/8/09-6/30/10
Lopez, Jose Operations/Grounds	Gardner	7/1/09-6/30/10
Marroquin, Robert McKinley Elementary	Inst Asst – Special Ed	10/24/09
Olmos, Maria Rogers Elementary	Sr. Office Specialist	10/5/09-10/23/09
Orozco, Abel Operations/Grounds	Gardner	7/1/09-6/30/10
Stout, Bonnie Lincoln MS	Sr. Office Specialist	11/17/09-11/23/09
Tirado, Fortino Operations/Grounds	Equip Oper/Tree Trimmer	7/1/09-6/30/10
Villa, Alejandro Operations/Grounds	Utility Worker	7/1/09-6/30/10
Zaldivar, Guadalupe Rogers/Food Svcs	Cafeteria Worker I	9/8/09-6/30/10
Zheng, Jin Santa Monica HS	Inst Asst – Special Ed	10/24/09

SUBSTITUTES

EFFECTIVE DATE

Alvarez, Jose Operations	Gardner	11/6/09-6/30/10
Chamussy, Cindy Human Resources	Office Specialist	11/19/09-6/30/10
Darigan, Eden Webster Elementary	Inst Asst – Classroom	11/4/09-11/6/09
Escobedo, Elvira Child Develop Svcs	Children Center Asst	11/17/09-6/25/10
Garrett, Christine Human Resources	Office Specialist	11/19/09-6/30/10
Heaney, Anne-Marte Special Education	Inst Asst – Special Ed	9/9/09-6/25/10

Leon, Felipe Operations	Gardner	11/6/09-6/30/10
Miller, Melvyn Human Resources	Campus Security Officer	11/19/09-6/30/10
Romero, Clara Rogers Elementary	Administrative Asst	10/28/09-6/30/10
Santino, Susan Human Resources	Office Specialist	11/19/09-6/30/10
<u>CHANGE IN ASSIGNMENT</u>		<u>EFFECTIVE DATE</u>
St. Clair, Reginald Muir Elementary	Physical Activities Specialist 6 Hrs/SY Fr: 4 Hrs/SY; SMASH	11/23/09
<u>TRANSFER – AS PER SEIU CONTRACT LANGUAGE, 8.6</u>		<u>EFFECTIVE DATE</u>
Guzman, Marianna Santa Monica HS/Food Svcs	Cafeteria Worker I 3 Hrs/SY Fr: 3 Hrs/SY/Roosevelt Elementary	10/14/09
Moore, Sandra Roosevelt/Food Svcs	Cafeteria Worker I 3 Hrs/SY Fr: 3 Hrs/SY/Santa Monica HS	10/14/09
<u>LEAVE OF ABSENCE (PAID)</u>		<u>EFFECTIVE DATE</u>
Baker, Terrence Operations	Custodian Medical	11/18/09-12/14/09
Holloway, Shirlene Food Svcs	Cafeteria Worker I Personal	10/27/09-11/9/09
Keller, Evelyn Roosevelt Elementary	Inst Asst – Special Ed Medical	10/30/09-12/7/09
Mares, Jose Maintenance	Lead Person, Grounds Medical	11/16/09-11/17/09
Meyer, Maria Special Education	Inst Asst – Specialized Medical	11/16/09-1/15/10
Moore, Evan Pt Dume Elementary	Physical Activities Specialist Medical	12/5/09-1/15/10
Nguyen, Chieu-Quan Santa Monica HS	Inst Asst – Special Ed	11/15/09-12/27/09
<u>PROFESSIONAL GROWTH</u>		<u>EFFECTIVE DATE</u>
Hernandez, Patricia John Adams MS	Sr. Office Specialist	12/1/09
James, Carolin Special Education	Sr Office Specialist	11/1/09
Jones, Chancy John Adams MS	Campus Security Officer	12/1/09
Tirado, Fortino Operations	Equip Operator/Tree Trimmer	12/1/09

WORKING OUT OF CLASS

		<u>EFFECTIVE DATE</u>
Castillo, John Info Services	Director, Info Svcs Fr: Network Engineer	11/9/09-11/27/09
Chavez, Dennis Facilities Maint	Facilities Tech Fr: Glazier	11/6/09-3/18/10
Herrera, Zenon Cesar Facilities Maint	Glazier Fr: Skilled Maint Worker	11/6/09-3/18/10
Marmolejo, David Info Svcs	Tele Syst/Computer Equip Spec Fr: Tech Support Asst	11/1/09-1/29/10
Patterson, Pete Info Svcs	Tech Support Asst Fr: Utility Worker; Maintenance	11/9/09-7/1/10
Tirado, Fortino Operations	Sprinkle Repair Tech Fr: Equipment Operator/Tree Trimmer	11/5/09-3/17/10
Ward, Victor Operations	Utility Worker Fr: Custodian	11/9/09-3/26/10

ESTABLISHMENT OF POSITION

	<u>EFFECTIVE DATE</u>
Administrative Asst 8 Hrs/12 Mo; Measure BB/Facilities Improvement	11/30/09

ABOLISHMENT OF POSITION

	<u>EFFECTIVE DATE</u>
Inst Asst – Special Ed 6 Hrs/SY; Santa Monica HS	10/29/09
Inst Asst – Special Ed 6 Hrs/SY; Malibu High School	11/3/09
Sr. Administrative Asst 8 Hrs/12 Mo; Measure BB/Facilities Improve	11/30/09

RESIGNATION

		<u>EFFECTIVE DATE</u>
Riordan, Elizabeth Special Education	Inst Asst – Specialized	11/16/09
Sampson, Julie McKinley Elementary	Inst Asst – Special Ed	11/6/09
Van Otten, Robert Cabrillo Elementary	Inst Asst – Physical Ed	11/6/09

RETIREMENT

		<u>EFFECTIVE DATE</u>
Ramos, Alexander McKinley Elementary	Custodian	12/9/09

MOTION MADE BY: Mr. Snell
 SECONDED BY: Mr. Allen
 STUDENT ADVISORY VOTE: Aye
 AYES: All (6) (Dr. Escarce was absent)
 NOES: None (0)

TO: BOARD OF EDUCATION

ACTION/CONSENT

12/10/09

FROM: TIM CUNEO / MICHAEL D. MATTHEWS / WILBERT YOUNG

RE: CLASSIFIED PERSONNEL – NON-MERIT

RECOMMENDATION NO. A.24

It is recommended that the following be approved and/or ratified for Classified Personnel (Non-Merit). All personnel assigned will be properly elected on a temporary basis to be used as needed in accordance with District policies and salary schedules.

COACHING ASSISTANT

GRAY, CARLOS	MALIBU HIGH SCHOOL	11/1/09-6/30/10
HAVERFIELD, MICHAEL	MALIBU HIGH SCHOOL	11/25/09-6/30/10
HUMPHREY, REGENCE	MALIBU HIGH SCHOOL	11/1/09-6/30/10
JACKSON, BRIANNA	MALIBU HIGH SCHOOL	11/1/09-6/30/10
JACOBSON, JAMES	MALIBU HIGH SCHOOL	11/13/09-6/30/10
KINNEAR, LLOYD	MALIBU HIGH SCHOOL	11/1/09-6/30/10
KREMAN, MARTIN	MALIBU HIGH SCHOOL	11/5/09-6/30/10
PIKE, ROBERT	MALIBU HIGH SCHOOL	11/1/09-6/30/10

NOON SUPERVISION

DE LEON, ACHIAN	ROGERS ELEMENTARY	9/16/09-6/25/10
SANTINO, SUSAN	MUIR ELEMENTARY	11/1/09-6/25/10

PROFESSIONAL EXPERT – LEVEL I

HARDING, DEBBIE	FOOD SERVICES [Support Garden Program]	11/2/09-6/30/10
-----------------	---	-----------------

PROFESSIONAL EXPERT – LEVEL II

ANDREWS, DIAN	SMASH [Art Instruction]	9/9/09-6/25/10
---------------	----------------------------	----------------

PROFESSIONAL EXPERT – LEVEL III

REDDISH, KATHRYN	EDSVCS/SANTA MONICA HS [Orchestra Coach]	10/1/09-6/25/10
------------------	---	-----------------

STUDENT WORKER – WORKABILITY

DEL PAZ, MATTHEW	SPECIAL EDUCATION	9/29/09-6/30/11
GARCIA, MARCELA	SPECIAL EDUCATION	10/1/09-6/30/11

***** ***** ***** ***** ***** *****

Ms. Pye requested more information regarding the garden program and Debbie Harding's work.

MOTION MADE BY: Mr. Snell
SECONDED BY: Mr. Allen
STUDENT ADVISORY VOTE: Aye
AYES: All (6) (Dr. Escarce was absent)
NOES: None (0)

TO: BOARD OF EDUCATION

ACTION/CONSENT

12/10/09

FROM: TIM CUNEO / MICHAEL D. MATTHEWS

RE: ADOPT POLICY 4158 / 4258 / 4358 – EMPLOYEE SECURITY

RECOMMENDATION NO. A.25

It is recommended that the Board of Education consider adopting policy 4158 / 4258 / 4358 – Employee Security.

This policy was discussed at the November 19, 2009, board meeting.

Attachments:

- BP 4158 / 4258 / 4358 – Employee Security (for adoption)
- AR 4158 / 4258 / 4358 – Employee Security (for reference)

MOTION MADE BY: Mr. Snell
SECONDED BY: Mr. Allen
STUDENT ADVISORY VOTE: Aye
AYES: All (6) (Dr. Escarce was absent)
NOES: None (0)

The Board of Education desires to provide a safe, orderly working environment for all employees. As part of the district's comprehensive school safety plan, the Superintendent or designee shall develop strategies for protecting employees from potentially dangerous persons and situations and for assisting them in the event of an emergency situation.

The Superintendent or designee shall ensure that employees are informed, in accordance with law, regarding crimes and offenses by students who may pose a danger in the classroom.

When violence is directed against an employee by any individual and the employee so notifies the Superintendent or designee, the Superintendent or designee shall take steps to ensure that appropriate legal measures are instituted. When the employee notifies the Superintendent or designee of a threat of bodily harm, the district shall take appropriate measures to enable the employee to request assistance if a threat occurs on school grounds.

The Superintendent or designee shall ensure that employees are trained in crisis prevention and intervention techniques in order to protect themselves and students. Staff development may include training in classroom management, effective communication techniques and crisis resolution.

Employees may possess a pepper spray weapon that meets the requirements of Penal Code 12403.7 on school property when students are not present. On a case-by-case basis, the Superintendent or designee may allow such possession when students are present. Such a request will be considered upon written request by the employee to the Superintendent. That request shall include an explanation of why the pepper spray weapon is justified. Any employee who is negligent or careless in the possession or handling of pepper spray shall be subject to appropriate disciplinary measures.

Reporting of Injurious Objects

The Board requires school employees to take immediate action upon being made aware that any person is in possession of an injurious object on school grounds or at a school-related or school-sponsored activity. The employee shall use his/her own judgment as to the dangerousness of the situation and, based upon this analysis, shall do one of the following:

1. Confiscate the object and deliver it to the principal immediately
2. Immediately notify the principal, who shall take appropriate action

EMPLOYEE SECURITY (continued)

3. Immediately notify the local law enforcement agency and the principal

When informing the principal about the possession or seizure of a weapon or dangerous device, the employee shall report the name(s) of persons involved, witnesses, location, and the circumstances of any seizure.

Legal Reference: (see next page)

EMPLOYEE SECURITY (continued)

Legal Reference:

EDUCATION CODE

32210-32212 *Willful disturbance, public schools or meetings*
32225-32226 *Communication devices*
35204 *Contract with attorney in private practice or use of administrative advisor*
35205 *Contract for legal services*
35208 *Liability insurance*
35213 *Reimbursement for loss, destruction or damage of school property*
44014 *Report of assault by pupil against school employee*
44807 *Duty concerning conduct of students*
48201 *Transfer of student records*
48900-48926 *Suspension or expulsion Grounds for suspension or expulsion*
49079 *Notification to teacher; student who has engaged in acts constituting grounds for suspension or expulsion*
49330-49335 *Injurious objects*

CIVIL CODE

51.7 *Freedom from violence or intimidation*

CODE OF CIVIL PROCEDURE

527.8 *Workplace violence safety act*

GOVERNMENT CODE

995-996.4 *Defense of public employees*

3543.2 *Scope of representation*

PENAL CODE

71 *Threatening public officers and employees and school officials*
240 *Definition of assault*
241.2 *Assault on school or park property against any person*
241.3 *Assault against school bus drivers*
241.6 *Assault on school employee includes board member*
242 *Definition of battery*
243 *Battery; definition of "injury" and "serious bodily injury"*
243.2 *Battery on school or park property against any person*
243.3 *Battery against school bus drivers*
243.6 *Battery against school employee includes board member*
245.5 *Assault with deadly weapon; school employee includes board member*
290 *Registration of sex offenders*
601 *Trespass by person making credible threat*
626.9 *Gun-Free School Zone Act of 1995*
626.10 *Exceptions to bringing weapons on school grounds*
646.9 *Stalking*
12403.7 *Weapons approved for self defense*

WELFARE AND INSTITUTIONS CODE
827 *Juvenile court proceedings; reports; confidentiality*
828.1 *District police or security department, disclosure of juvenile records*

Management Resources continued: (see next page)

EMPLOYEE SECURITY (continued)

Management Resources:

CDE CORRESPONDENCE

0401.01 Protecting Student Identification in Reporting Injurious Objects

WEB SITES

CDE, Safe Schools and Violence Prevention Office: <http://www.cde.ca.gov/spbranch/safety/safetyhome>

CSBA: <http://www.csba.org>

Policy **SANTA MONICA-MALIBU UNIFIED SCHOOL DISTRICT**
adopted:

An employee may use reasonable and necessary force when necessary for self-defense, to protect another person or property, to quell a disturbance threatening physical injury to others, or to obtain possession of weapons or other dangerous objects on or within the control of a student. (Education Code 44807, 49001)

Employees shall promptly report to their principal or other immediate supervisor any attack, assault or physical threat made against them by a student.

Both the employee and the principal or other immediate supervisor shall promptly report such instances to the appropriate local law enforcement agency. (Education Code 44014)

In addition, employees shall promptly report to their principal or supervisor, and may report to law enforcement, any attack, assault or threat made against them on school grounds by any other individual.

Reports of attack, assault or threat also shall be forwarded immediately to the Superintendent or designee.

An employee whose person or property is injured or damaged by willful misconduct of a student may ask the district to pursue legal action against the student or the student's parent/guardian. (Education Code 48905)

Notice Regarding Student Offenses Committed While Under School Jurisdiction

The Superintendent or designee shall inform the teacher of each student who has engaged in, or is reasonably suspected of, any act during the previous three school years which could constitute grounds for suspension or expulsion under Education Code 48900, with the exception of the possession or use of tobacco products, or Education Code 48900.2, 48900.3, 48900.4, or 48900.7. This information shall be based upon district records maintained in the ordinary course of business or records received from a law enforcement agency. (Education Code 49079)

EMPLOYEE SECURITY (continued)

Upon receiving a transfer student's record regarding acts committed by the student that resulted in his/her suspension or expulsion, the Superintendent or designee shall inform any of the student's teacher(s) that the student was suspended from his/her former district and of the act that resulted in the suspension or expulsion.

Information received by teacher(s) shall be received in confidence for the limited purpose for which it was provided and shall not be further disseminated by the teacher.

Notice Regarding Student Offenses Committed While Outside School Jurisdiction

When a minor student has been found by a court of competent jurisdiction to have illegally used, sold or possessed a controlled substance or committed specified crimes involving serious acts of violence, the district police or security department may provide written notification to the Superintendent.

When informed by the court that a minor student has been found by a court to have committed any felony or any misdemeanor involving curfew, gambling, alcohol, drugs, tobacco products, carrying of weapons, a sex offense listed in Penal Code 290, assault or battery, larceny, vandalism or graffiti, the Superintendent or designee shall so inform the school principal.

The principal shall disseminate this information to the counselor(s) who directly supervises or reports on the student's behavior or progress. The principal also may inform any teacher or administrator he/she thinks may need the information so as to work with the student appropriately, avoid being needlessly vulnerable, or protect others from vulnerability.

Any court-initiated information that a teacher, counselor or administrator receives shall be kept confidential and used only to rehabilitate the student and protect other students and staff.

The information shall be further disseminated only when communication with the student, parent/guardian, law enforcement staff and probation officer is necessary to rehabilitate the student or to protect students and staff.

When a student is removed from school as a result of his/her offense, the Superintendent shall hold the court's information in a separate confidential file until the student is returned to public school. If the student is returned to a different district, the Superintendent shall transmit the information provided by the student's parole or probation officer to the Superintendent of the new district of attendance.

EMPLOYEE SECURITY (continued)

Any confidential file of court-initiated information shall be kept until the student becomes 18, graduates from high school, or is released from juvenile court jurisdiction, whichever occurs first; it shall then be destroyed.

Procedures to Maintain Confidentiality of Student Offenses

In order to maintain confidentiality when providing information about student offenses to counselors and teachers of classes/programs to which a student is assigned, the principal or designee shall send the staff member a written notification requesting him/her to review a student's file in the school office as soon as practicable. This notification shall not name or otherwise identify the student. The staff member shall be asked to initial the notification and return it to the principal or designee.

The staff member shall also initial the student's file when reviewing it in the school office.

Once the district has made a good faith effort to comply with the notification requirement of Education Code 49079 and Welfare and Institutions Code 827, an employee's failure to review the file constitutes district compliance with the requirement to provide notice to the teacher.

Use of Pepper Spray

Employees who possess pepper spray on school property shall be notified of the following conditions:

1. The pepper spray shall be used only in self-defense.
2. An employee who uses pepper spray other than in self-defense shall be subject to disciplinary action by the district and, in accordance with law, a fine and/or imprisonment.
3. The employee shall ensure that the pepper spray is stored in a secure place and not accessible to students or other individuals. An employee who is negligent in the storage of pepper spray may be subject to disciplinary action.

Employees wishing to carry pepper spray on school property or to a school-related activity shall submit to the Superintendent or designee a written request setting forth the need for the pepper spray. Should the Superintendent or designee determine that the employee may not carry pepper spray, the employee shall receive a written statement of the reason for this determination.

Regulation **SANTA MONICA-MALIBU UNIFIED SCHOOL DISTRICT**
approved:

MAJOR ITEMS

TO: BOARD OF EDUCATION

ACTION/MAJOR

12/10/09

FROM: TIM CUNEO

RE: ELECTION OF BOARD OF EDUCATION OFFICERS

RECOMMENDATION NO. A.26

It is recommended that Barry Snell be elected President of the Board of Education of the Santa Monica-Malibu Unified School District.

RECOMMENDATION NO. A.a

It is recommended that Kelly Pye be elected Vice- President of the Board of Education of the Santa Monica-Malibu Unified School District.

RECOMMENDATION NO. A.b

It is recommended that the Superintendent, Tim Cuneo, be designated as the Secretary of the Board of Education for the Santa Monica-Malibu Unified School District.

COMMENT: In accordance with Board Policy 9100, the officers of the Board of Education of the Santa Monica-Malibu Unified School District shall consist of a President, Vice President, and Secretary. Each shall be elected at the organization meeting held annually each year.

MOTION MADE BY: Mr. Mechur
SECONDED BY: Mr. de la Torre
STUDENT ADVISORY VOTE: N/A
AYES: All (7)
NOES: None (0)

TO: BOARD OF EDUCATION
FROM: TIM CUNEO / JANECE L. MAEZ
RE: CERTIFICATION OF AUTHORIZED SIGNATURES

ACTION/MAJOR
12/10/09

RECOMMENDATION NO. A.27

It is recommended that the following persons be authorized to sign warrants, orders for salary payment, notices of employment, contracts and other documents as directed by the Board of Education:

Mr. Tim Cuneo, Superintendent
Ms. Janece L. Maez, Assistant Superintendent, Business and Fiscal Services/Chief Financial Officer
Dr. Michael D. Matthews, Assistant Superintendent, Human Resources
Dr. Chiung-Sally Chou, Chief Academic Officer
Ms. Judy Abdo, Director of Child Development Services
Ms. Maureen L. Bradford, Director of Assessment, Research & Evaluation
Ms. Marolyn Freedman, Director of Student Services
Mr. Orlando R. Griego, Director of Food & Nutrition Services
Ms. Peggy Harris, Director of Curriculum & Staff Development
Ms. Wang Pin-Ju "Pat" Ho, Director of Business & Fiscal Services
Ms. Virginia I. Hyatt, Director of Purchasing & Warehouse
Ms. Ruthy Mangle, Director of Information Services
Dr. Sara Woolverton, Director of Special Education
Mr. Stuart Sam, Director of Facility Improvement Projects
Mr. Terance Venable, Manager of Operations and Grounds
Mr. Terry Kamibayashi, Manager of Maintenance and Construction
Mr. Carey W. Upton, Director of Theater Operations and Facility Permits

It is further recommended that the attached *Certification of Signatures* document be completed and filed with the County Superintendent of Schools in accordance with Education Code §42633. The signatures will be considered valid for the period December 3, 2009, through December 2, 2010.

MOTION MADE BY: Ms. Leon-Vazquez
SECONDED BY: Ms. Pye
STUDENT ADVISORY VOTE: N/A
AYES: All (7)
NOES: None (0)

Santa Monica-Malibu Unified School District
DISTRICT

CERTIFICATION OF SIGNATURES

As clerk/secretary to the governing board of the above named district, I certify that the signatures shown below in Column 1 are the verified signatures of the members of the governing board. I certify that the signatures shown in Column 2 are the verified signatures of the person or persons authorized to sign notices of employment, contracts and orders drawn on the funds of the district. These certifications are made in accordance with the provisions of Education Code Sections:

K-12 Districts: 35143, 42632, and 42633

Page 1 of 2

Community College Districts: 72000, 85232, and 85233

If persons authorized to sign orders as shown in Column 2 are unable to do so, the law requires the signatures of the majority of the governing board.

These approved signatures are valid for the period of: December 3, 2009 to December 2, 2010

In accordance with governing board approval dated December 10, 2009.

Signature [Signature]
Clerk (Secretary) of the Board

NOTE: Please TYPE name under signature.

Column 1

Signatures of Members of the Governing Board

SIGNATURE <i>Barry A. Snell</i>
TYPED NAME Barry A. Snell
President of the Board of Trustees/Education
SIGNATURE <i>Kelly M. Pye</i>
TYPED NAME Kelly M. Pye
Vice President Board of Trustees/Education
SIGNATURE <i>Ralph Mechur</i>
TYPED NAME Ralph Mechur
Member of the Board of Trustees/Education
SIGNATURE <i>J. J. Escarce</i>
TYPED NAME J. J. Escarce
Member of the Board of Trustees/Education
SIGNATURE <i>Ben Allen</i>
TYPED NAME Ben Allen
Member of the Board of Trustees/Education
SIGNATURE <i>Maria Leon-Vazquez</i>
TYPED NAME Maria Leon-Vazquez
Member of the Board of Trustees/Education
SIGNATURE <i>Oscar de la Torre</i>
TYPED NAME Oscar de la Torre
Member of the Board of Trustees/Education

If the Board has given special instructions for signing warrants or orders, please attach a copy of the resolution to this form.

Column 2

Signatures of Personnel and/or Members of Governing Board authorized to sign Orders for Salary or Commercial Payments, Notices of Employment, and Contracts:

SIGNATURE <i>Tim Cuneo</i>
TYPED NAME Tim Cuneo
TITLE Superintendent & Secretary to Board
SIGNATURE <i>Janece L. Maez</i>
TYPED NAME Janece L. Maez
TITLE Asst. Supt. Business & Fiscal/CFO
SIGNATURE <i>Dr. Michael D. Matthews</i>
TYPED NAME Dr. Michael D. Matthews
TITLE Asst. Supt., Human Resources
SIGNATURE <i>Dr. Chung-Sally Chou</i>
TYPED NAME Dr. Chung-Sally Chou
TITLE Chief Academic Officer
SIGNATURE <i>Judy Abdo</i>
TYPED NAME Judy Abdo
TITLE Director of Child Development Serv.
SIGNATURE <i>Maureen L. Bradford</i>
TYPED NAME Maureen L. Bradford
TITLE Dir. of Assessmt, Research & Evaluation
SIGNATURE <i>Marolyn Freedman</i>
TYPED NAME Marolyn Freedman
TITLE Director of Student Services

Number of Signatures required:

ORDERS FOR SALARY PAYMENTS	ORDERS FOR COMMERCIAL PAYMENTS
NOTICES OF EMPLOYMENT	CONTRACTS

Santa Monica-Malibu Unified School District
DISTRICT

CERTIFICATION OF SIGNATURES

As clerk/secretary to the governing board of the above named district, I certify that the signatures shown below in Column 1 are the verified signatures of the members of the governing board. I certify that the signatures shown in Column 2 are the verified signatures of the person or persons authorized to sign notices of employment, contracts and orders drawn on the funds of the district. These certifications are made in accordance with the provisions of Education Code Sections:

K-12 Districts: 35143, 42632, and 42633

Page 2 of 2

Community College Districts: 72000, 85232, and 85233

If persons authorized to sign orders as shown in Column 2 are unable to do so, the law requires the signatures of the majority of the governing board.

These approved signatures are valid for the period of: December 3, 2009 to December 2, 2010

In accordance with governing board approval dated December 10, 2009

Signature [Handwritten Signature]
Clerk (Secretary) of the Board

Column 2

Signatures of Personnel and/or Members of Governing Board authorized to sign Orders for Salary or Commercial Payments, Notices of Employment, and Contracts:

SIGNATURE	<u>[Handwritten Signature]</u>
TYPED NAME	Orlando R. Griego
TITLE	Director of Food & Nutrition Services
SIGNATURE	<u>[Handwritten Signature]</u>
TYPED NAME	Peggy Harris
TITLE	Director of Curriculum & Staff Devel.
SIGNATURE	<u>[Handwritten Signature]</u>
TYPED NAME	Wang Pin-Ju "Pat" Ho
TITLE	Director of Fiscal & Business Serv.
SIGNATURE	<u>[Handwritten Signature]</u>
TYPED NAME	Virginia I. Hyatt
TITLE	Director of Purchasing & Warehouse
SIGNATURE	<u>[Handwritten Signature]</u>
TYPED NAME	Ruthy Mangle
TITLE	Director of Information Services
SIGNATURE	<u>[Handwritten Signature]</u>
TYPED NAME	Dr. Sara Woolverton
TITLE	Director of Special Education
SIGNATURE	<u>[Handwritten Signature]</u>
TYPED NAME	A. Sam
TITLE	Director of Facility Improvment. Proj.

Number of Signatures required:

ORDERS FOR SALARY PAYMENTS	ORDERS FOR COMMERCIAL PAYMENTS
NOTICES OF EMPLOYMENT	CONTRACTS

Column 2

Signatures of Personnel and/or Members of Governing Board authorized to sign Orders for Salary or Commercial Payments, Notices of Employment, and Contracts:

SIGNATURE	<u>[Handwritten Signature]</u>
TYPED NAME	Terance Venable
TITLE	Manager of Operations & Grounds
SIGNATURE	<u>[Handwritten Signature]</u>
TYPED NAME	Terry Kamibayashi
TITLE	Manager of Maintenance & Construction
SIGNATURE	<u>[Handwritten Signature]</u>
TYPED NAME	Carey W. Upton
TITLE	Dir. of Theater Oper. & Fac. Permits
SIGNATURE	<u>[Blank]</u>
TYPED NAME	<u>[Blank]</u>
TITLE	<u>[Blank]</u>
SIGNATURE	<u>[Blank]</u>
TYPED NAME	<u>[Blank]</u>
TITLE	<u>[Blank]</u>
SIGNATURE	<u>[Blank]</u>
TYPED NAME	<u>[Blank]</u>
TITLE	<u>[Blank]</u>

Number of Signatures required:

ORDERS FOR SALARY PAYMENTS	ORDERS FOR COMMERCIAL PAYMENTS
NOTICES OF EMPLOYMENT	CONTRACTS

TO: BOARD OF EDUCATION

ACTION/MAJOR

12/10/09

FROM: TIM CUNEO

RE: ELECTION OF ANNUAL REPRESENTATIVE TO THE LOS ANGELES COUNTY SCHOOL TRUSTEES ASSOCIATION (LACSTA) FOR 2009-2010

RECOMMENDATION NO. A.28

It is recommended that Ben Allen be elected by the Board of Education as the Annual Representative to the Los Angeles County School Trustees Association for 2009-10. The Representative shall perform duties as described in Standing Rule #6 as follows:

Representatives: Each School Board will be asked to select a board member at their organizational meeting to serve as the LACSTA representative.

The representative's role is to:

- a. vote on all Association matters;
- b. communicate between the Executive Board, the Association, and the local Board.

COMMENT: Board Member Allen was elected as the board's representative for the 2009-2010 term.

***** ***** ***** ***** ***** *****

Mr. Allen suggested that staff send the SMMUSD board meeting schedule to the Los Angeles County School Trustees Association because last year's association meetings conflicted with board meeting dates.

MOTION MADE BY: Mr. Mechur
SECONDED BY: Ms. Leon-Vazquez
STUDENT ADVISORY VOTE: N/A
AYES: All (7)
NOES: None (0)

TO: BOARD OF EDUCATION

ACTION/MAJOR

12/10/09

FROM: TIM CUNEO

RE: ELECTION OF VOTING REPRESENTATIVE: LOS ANGELES COUNTY
COMMITTEE ON SCHOOL DISTRICT ORGANIZATION

RECOMMENDATION NO. A.29

It is recommended that Ben Allen be elected as the board's voting representative to elect members to the Los Angeles County Committee on School District Organization from December 2009 through November 2010.

COMMENT: Each school board is asked to select a board member at its annual organizational meeting to serve as the voting representative to elect members to the Los Angeles County Committee on School District Organization. Board Member Allen volunteered to serve as last year as the board's representative.

MOTION MADE BY: Dr. Escarce
SECONDED BY: Mr. de la Tore
STUDENT ADVISORY VOTE: N/A
AYES: All (7)
NOES: None (0)

TO: BOARD OF EDUCATION
FROM: TIM CUNEO / CHIUNG-SALLY CHOU / PEGGY HARRIS
RE: HIGH SCHOOL COURSE APPROVAL

ACTION/MAJOR
12/10/09

RECOMMENDATION NO. A.30

It is recommended that the Board of Education approve the granting of credits for the following course to be offered at the high school level.

Comments: Staff is requesting approval of the proposed class to enhance current course offerings available to district high school students. The ability to effectively communicate to others through writing is a critical skill that prepares students for graduation and beyond. The courses will count towards: 1) units needed for graduation; 2) fulfillment of district-adopted graduation requirements; and 3) admission to California's public universities ("a-g requirements.")

COURSE: *Advanced Creative Writing*

NUMBER OF CREDITS: 10 **Duration:** Year Long Course

DEPARTMENT: English

COURSE OBJECTIVES/ GOALS: Participating students will:

- Broaden their organizational skills in writing;
- Increase/ enhance their skills in, and ability to incorporate the following elements of writing in their work:
 - Point of View
 - Imagery
 - Character Development
 - Conversation and Dialog
 - Thoughts and Emotions
 - Description
 - Imagery
 - Humor/ Tragedy

COURSE DESCRIPTION/ OVERVIEW: Advanced Creative Writing is the second year of a creative writing program, as the class builds upon the concepts and skills developed in the first year Creative Writing course. Through Advanced Creative Writing, students sharpen their voice, style, and proficiency in various written forms, including story development and poetic expression. The class explores a variety of philosophies on writing, ranging from the Greek concepts of comedy and tragedy to the nature of creativity, and what it means to be a writer.

This course is organized around weekly cycles that include:

- Instruction and discussion of a specific literary technique;
- Exploration of the works of authors' and poets' use of the technique;
- Prompted Guided Writing;
- Peer editing and class-wide readings.

(Continued on next page)

Evaluation of students' levels of mastery will be performance-based, with students being assessed through products archived in journals and writing portfolios that are regularly submitted to the instructor. An additional facet of student evaluation is a peer-editing component through which students receive credit for working with others to improve their writing. Students are also required to complete and submit a book at the end of each semester that incorporates different genres of writing into one thematically cohesive work that demonstrates advanced knowledge of the topics covered over the preceding eighteen weeks. Except for journals and peer editing, all assignments will be graded through the use of genre specific rubrics.

***** ***** ***** ***** ***** *****

Mr. de la Torre asked about budget impacts. Dr. Chou explained that this course would be included in the current FTEs.

Dr. Chou clarified for Ms. Leon-Vazquez that this class would not replace twelfth grade English. Ms. Leon-Vazquez supported this item as a means of increasing student competitiveness for college applications as well as improving student writing.

Dr. Escarce expressed his concern about small elective classes. Dr. Chou replied that twenty-five students were currently enrolled. She and Dr. Kelly from MHS discussed that if the introductory creative writing and advanced creative writing classes enrollment drops, the two sections will condense into one. Dr. Escarce suggested adding language that if the enrollment for this class drops below twenty-five students, it would be eliminated. Dr. Chou clarified this item was simply to approve the course content. Mr. Cuneo said such a staffing parameter could be set during staffing decisions. Dr. Matthews warned against the difficulty of keeping track of such parameters for just one class over the years.

Dr. Escarce MOTIONED to table this item until the next meeting. He then retracted the motion.

The board requested information regarding the number of classes that are still under twenty-five students. They also requested to see the master schedule and class sizes for MHS and Samohi. Mr. Allen asked staff to place an item on a future agenda regarding staffing and class sizes. Mr. Cuneo said the topics of staffing and class size would be brought back in January or early February.

MOTION MADE BY: Ms. Leon-Vazquez
SECONDED BY: Mr. de la Torre
STUDENT ADVISORY VOTE: N/A
AYES: Six (6)
NOES: One (1) (Dr. Escarce)

TO: BOARD OF EDUCATION

ACTION/MAJOR

12/10/09

FROM: TIM CUNEO / JANECE L. MAEZ / STUART SAM

RE: ESTABLISH POSITION – ADMINISTRATIVE ASSISTANT, MEASURE
BB/FACILITIES IMPROVEMENT

RECOMMENDATION NO. A.31

It is recommended that the Board of Education establish the position of Administrative Assistant (1.0 FTE) in the Measure BB/Facilities Improvement Department in order to better serve the needs of the District.

COMMENT: When the Measure BB/Facilities Improvement Department was established, a Sr. Administrative Assistant position (1.0 FTE) was included in the department staffing. It is now recommended that the appropriate support for the department be an Administrative Assistant (1.0 FTE), as the job description for Administrative Assistant is more reflective of the required duties of the position. The Sr. Administrative Assistant position will be abolished.

FUNDING NOTE: The 2009-2010 budget will be adjusted -\$5,607 for the difference in salary and benefits.

MOTION MADE BY: Mr. Allen
SECONDED BY: Ms. Leon-Vazquez
STUDENT ADVISORY VOTE: N/A
AYES: All (7)
NOES: None (0)

TO: BOARD OF EDUCATION

ACTION/MAJOR

12/10/09

FROM: TIM CUNEO / MICHAEL D. MATTHEWS / WILBERT YOUNG

RE: APPOINTMENT OF PERSONNEL COMMISSIONER –
SUZANNE KIM

RECOMMENDATION NO. A.32

It is recommended that the Board of Education approve the selection of Ms. Suzanne Kim for nomination to the Personnel Commission, as recommended by the Personnel Commission Selection Committee, and forward the nomination to the State Superintendent of Public Instruction for appointment. The term of appointment is to begin immediately upon appointment by the State Superintendent of Public Instruction and to extend to December 1, 2012.

COMMENTS: The application period for the open Personnel Commissioner position was from September 4, 2009, to October 16, 2009. The recruitment process was widely publicized by a variety of media including on-line postings, press releases, and mailings.

The Personnel Commission Selection Committee, comprised of Ms. Kim Eyler, PTA representative, Ms. Anette Bolan, SEIU representative, Ms. Kelly Pye, Board of Education representative, and Ms. Celia Carroll, Personnel Commission representative, met on November 12, 2009, and interviewed the applicants. It is the unanimous recommendation of the Personnel Commission Selection Committee that Ms. Suzanne Kim be appointed to fill the open Personnel Commissioner position. She is an active member of the Santa Monica-Malibu community and a former employee of the school district.

Public Comments:

- *Shane McLoud, a member of the community, expressed his concern that outreach to fill this position was not sufficient and requested that the position be reopened for one month.*
- *Keryl Cartee-McNeely, SEIU Chief Steward, said the same process was followed for the previous commissioner replacement. She said SEIU supports the appointment of Ms. Kim to the Personnel Commission.*

Mr. Allen asked Dr. Matthews to respond to claims made by the public speakers. Dr. Matthews explained the process for the appointment of a commissioner. The panel members have expressed to Dr. Matthews that they believe they have chosen a qualified candidate.

Ms. Leon-Vazquez asked Ms. Pye, who was on the panel, to comment. Ms. Pye said that she understood Mr. McLoud's concerns, but feels that the panel has chosen a qualified candidate. She suggested that perhaps in the future, in addition to press releases, advertising space be purchased in the local papers.

Mr. Snell recognized Ms. Kim, who was in the audience. Ms. Kim said she looked forward to serving the district.

MOTION MADE BY: Ms. Leon-Vazquez

SECONDED BY: Mr. de la Torre

STUDENT ADVISORY VOTE: N/A

AYES: All (7)

NOES: None (0)

TO: BOARD OF EDUCATION

ACTION/MAJOR
12/10/09

FROM: TIM CUNEO / JANECE L. MAEZ / STUART A. SAM

RE: APPROVAL OF MEASURE BB SCOPE ADJUSTMENTS FOR WASHINGTON CHILD DEVELOPMENT SERVICES PROJECT

RECOMMENDATION NO. A.33

It is recommended that the Board of Education approve a scope adjustment to the Washington Child Development Services Project reflecting scope reductions due to work at the site completed with separate funding sources.

Funding Information:

Budgeted: No
Fund: 21
Source: State School Building Fund
Account Numbers: 21-00000-0-00000-85000-6200-070-2600
Description: Building Improvement

COMMENTS: Improvements were completed in the summer of 2009 at the Washington CDS site that were funded in part by a Head Start grant received by Child Development Services. This has resulted in a reduction of the scope of the Measure BB project. It is proposed that the savings to the project construction budget be allocated to contract with an architectural and engineering team to prepare an analysis and feasibility study for the future use of the existing building at the Ashland side of the Washington west site. This building is currently in disrepair and is underutilized. The district will reach out to the community to receive input regarding potential design elements and uses for the site.

WASHINGTON CDS	Amount
Project Budget	\$1,575,000
Reduced Scope:	
Rooms 1, 2,3, 4 Completed	-155,000
Additional Scope:	
Underground Electrical Conduit	30,000
Additional Fencing	25,000
Feasibility Study for Ashland Building (transfer to soft costs)	100,000
Revised Project Budget	\$1,575,000

The Measure BB Advisory Committee reviewed the proposed scope adjustment on December 7, 2009.

A presentation will accompany this Major Action item (it can be found under Attachments at the end of these minutes).

***** ***** ***** ***** ***** *****

Mr. de la Torre asked about the possibility of using the site for something that would take advantage of the ocean view, like a meeting area for district staff. Mr. Sam, in response to Mr. de la Torre, said community input would be similar to the other site projects.

MOTION MADE BY: Mr. Mechur to add language regarding outreach to receive community input (underlined font).

SECONDED BY: Ms. Leon-Vazquez

STUDENT ADVISORY VOTE: N/A

AYES: All (7)

NOES: None (0)

TO: BOARD OF EDUCATION

ACTION/MAJOR

12/10/09

FROM: TIM CUNEO

RE: DISTRICT ADVISORY COMMITTEES – CHARGES FOR 2009-10

RECOMMENDATION NO. A.34

It is recommended that the Board of Education review and approve the following charges for 2009-10 for the Special Education District Advisory Committee. (The charges for the other DACs were approved by the board at the November 5, 2009, meeting.)

The current District Advisory Committees and their respective district staff liaison are as follows:

District Advisory Committee	Staff Liaison
English Learners Advisory	Aida Diaz
Child Care and Development	Judy Abdo
Community Health and Safety	Marolyn Freedman
Visual & Performing Arts	Tom Whaley
Special Education	Sara Woolverton

SPECIAL EDUCATION

The charge to the SEDAC shall be:

1. Advise the Board of Education about attitudes, opinions, and issues significant to the Special Education school community.
 - o Measurement: In accordance with the Board policy concerning DACs, two written reports will be prepared – one at mid-year, the other to accompany an oral report to be presented to the Board at the end of the school year.
2. Continue to work with District staff in the identification of relevant and unrealized goals included in the recommendations of the Working Group (2009), ~~the Lou Barber Report (2008), and the Special Education Strategic Plan (2004).~~
 - o Measurement: In accordance with Board policy this information will be included in reports to the Board of Education at mid-year and at the end of the school year.
3. Through the Special Education Parent Handbook Ad Hoc Committee, ~~produce revisions~~ distribute hardcopies of addendums to and update the online version of the Special Education Parent Handbook in collaboration with District staff based on changes in relevant law, District updates and feedback from community members.
 - o Measurement: In accordance with Board policy this information will be included in reports to the Board of Education at mid-year and at the end of the school year.
4. ~~Work with the Childcare DAC, the Child Care & Early Education Task Force and other groups with common goals to provide input and support regarding Special Education preschool and CDS preschool and CREST programs. An Ad Hoc Committee will be formed to liaison with the aforementioned groups.~~
 - o ~~Measurement: In accordance with Board policy this information will be included in reports to the Board of Education at mid-year and at the end of the school year.~~
5. Review and assess the instructional technology in the District's Special Education Classes and report on how our District compares to districts that prioritize technology and utilize technology based curriculum and whether additional/updated equipment and/or software is needed to enable students to become computer literate and allow students and teachers meaningful access to current technology-based curricula. An Ad Hoc Committee will be formed to fulfill this Charge, including financial impact.
 - o Measurement: In accordance with Board policy this information will be included in reports to the Board of Education at mid-year and at the end of the school year.

6. Continue the Financial Ad Hoc Committee's work with the Director of Special Education, the District's Chief Financial Officer and the Financial Oversight Committee ~~in developing recommendations in connection with a more effective reporting instrument.~~
 - o Measurement: In accordance with Board policy this information will be included in reports to the Board of Education at mid-year and at the end of the school year.
7. ~~Create and maintain a facilitated parent support group possibly in combination with the PTA's Parent Resource Network.~~
 - o ~~Measurement: In accordance with Board policy this information will be included in reports to the Board of Education at mid-year and at the end of the school year.~~

End-of-Year Reports to the Board of Education

The following is the schedule for DAC reports to the Board of Education for Spring 2010:

District Advisory Committee	Date of Report – 2010
Community Health and Safety	May 6, 2010 (Malibu)
Visual & Performing Arts	May 6, 2010 (Malibu)
English Learners Advisory	May 20, 2010 (District Office)
Special Education	May 20, 2010 (District Office)
Child Care and Development	June 3, 2010 (District Office)

***** ***** ***** ***** ***** *****

Mr. Cuneo made the following comments:

- Charge #1: This is appropriate.
- Charge #2: SEDAC should be focusing on the working group recommendations. The Strategic Plan project will be addressed through the strategic planning process.
- Charge #3: It costs approximately \$8K-\$10K to reprint the handbook each year. Rather, the district will send out addendums and update online the version.
- Charge #4: At the previous SEDAC meeting, there was no commitment from members to move forward with this group.
- Charge #5: This is appropriate.
- Charge #6: FOC is studying these areas. SEDAC's concern should not be recommending reporting instruments.
- Charge #7: DACs should not be creating district groups; this is the job of the board. The PRN and PTA exist and should be utilized for this purpose.

Public Comment:

- Theresa Harris, Chair of SEDAC, commented that Charge #2 was not meant to supersede the existing groups. She agreed with Mr. Cuneo's comments on Charge #4. She clarified that Charge #7 was not meant to create a primary reporting group.

Mr. Snell said it was too many charges for one year, considering it was already December. Mr. Mechur said the charges were broad and the measurement was insufficient. Ms. Leon-Vazquez asked about Charge #6. Ms. Maez explained that the fiscal department is trying to develop a reporting format that addresses SEDAC's fiscal questions.

MOTION MADE BY: Mr. Snell to eliminate Charges #4 & 7 and alter Charges #2 & 3 (strikeout and underline). Mr. Mechur added to alter Charge #6 (strikeout).

SECONDED BY: Ms. Leon-Vazquez

STUDENT ADVISORY VOTE: N/A

AYES: All (7)

NOES: None (0)

TO: BOARD OF EDUCATION
FROM: TIM CUNEO / JANECE L. MAEZ / PAT HO
RE: APPROVAL OF THE 2009-10 FIRST INTERIM REPORT

ACTION/MAJOR
12/10/09

RECOMMENDATION NO. A.35

It is recommended that the Board of Education approve the 2009-10 First Interim Report and the corresponding budget adjustments.

COMMENTS: Education Code (EC) Sections §35035 (g), §42130, and §42131 require the governing board of each local educational agency (LEA) to certify at least twice a year as to the LEA's ability to meet its financial obligations for the remainder for that fiscal year and for the subsequent two fiscal years.

The 2009-10 Budget was adopted by the Board of Education on June 25, 2009, and was approved by the Los Angeles County Office of Education (LACOE).

Since the adoption of the initial budget, changing conditions have necessitated adjusting the District budget. All of the expenditure and revenue changes previously approved by the Board or proposed for approval at this time are individually identified in the First Interim Report (October 31, 2009), which is included as a part of this document.

The First Interim Report was developed based on the following Revenue and Expenditure Assumptions.

REVENUE ASSUMPTIONS

4.25% statutory COLA for 2009-10 Revenue Limit funding

The Base Revenue Limit for Santa Monica-Malibu USD will be \$6,469.84 per ADA (2008-09 P2 ADA – 11,032). A <18.355% > deficit factor is applied to the Revenue Limit, and a one-time reduction to district revenue limits of \$252.83 per 2008-09 P-2 ADA. The adjusted Based Revenue Limit will be \$5,029.47 per ADA. The total Revenue Limit is \$56,123,772.

The revenue for the Supplemental Instructional Programs is \$664,093 decreased by 19.84% as compared to the 2007-08 fiscal year.

The 2009-10 Enrollment is 11,607, which is increased by 42 students.

The Lottery allocation will be \$121 per annual ADA, of which \$109.50 is for unrestricted expenditures and the remaining \$11.50 is for Proposition 20 – Mandated for Instructional Materials.

The District will participate in the K-3 Class Size Reduction Program and receive \$1,071 per pupil, less the 15% of penalties for increasing class size to 23:1, and the total projected revenue is \$2,817,533.

No COLA and a <18.355%> cut of Special Education Funding. Adjusted Special Education Based Revenue Limit funding is \$5,054.79. Special Education transfer from the Revenue Limit is \$1,758,207. Special Education Mandate Settlement at \$4.52 per 1999-2000 ADA is \$52,328.

The 2008-09 Mandated Reimbursement is not included in the 2009-10 Budget.

The Measure "R" parcel tax at \$346 per parcel is estimated to generate \$10,264,436 after processing senior exemptions.

The District will receive \$7,443,913 of financial support from the City of Santa Monica.

The District will receive \$135,000 of Joint Use Agreement funding from the City of Malibu.

The combined lease revenue is \$2,662,993, which is from the DoubleTree Hotel, Madison Site, 9th & Colorado and 16th Street properties.

All State Categorical except Tier I State categorical programs funding are decreased by 19.84% compared to the 2007-08 revenues.

The estimated revenue of Tier III programs is \$3,187,700. A <19.84%> cut is applied to the 2007-08 Revenue.

The American Recovery and Reinvestment Act (ARRA) funding is as follows:

Title One - \$638,497

IDEA - \$1,200,000 in 2008-09 & \$1,284,988 in 2009-10

State Fiscal Stabilization Fund (SFSF) - \$3,047,171 in 2008-09 and \$912,353 in 2009-10.

Revenues for the Home to School Transportation & Special Education Transportation programs are cut by 19.84%.

EXPENDITURE ASSUMPTIONS

Staffing Ratio Changes:

K-3		23
Grade 4-5	(Title I schools)	25
Grade 4-5	(Other)	30
Grade 6-8	(John Adams)	30
Grade 6-12	(Other)	32

Full-Time Equivalent (FTE) Changes after Budget Adopted:

Certificated:

- (1.0) FTE teaching position at Franklin Elementary School
- (0.5) FTE teaching position at John Muir Elementary School
- 1.0 FTE teaching positions at Pt. Dume Elementary School
- 1.6 FTE teaching positions at John Adams Middle School
- 0.2 FTE teaching positions at Lincoln Middle School
- 0.4 FTE teaching positions at Malibu High School
- 1.8 FTE teaching positions at Santa Monica High School
- 0.5 FTE teaching positions at Special Education
- 0.2 FTE Counselor at District Office

Management:

- (1.0) FTE Director of School Safety
- 1.0 FTE Supervisor of Maintenance

Classified:

- 9.8175 FTE Instructional Aides for Special Education
- (1.0) FTE Building Trades

Salaries:

Certificated salary schedule has been compressed from 21 to 18 years (Estimated Cost \$600,000)

1.5% step and column increase for certificated employees

1.5% step and column increase for classified employees

Benefits:

Statutory Benefits:

8.25% STRS employer contribution rate

6.20% OASDI contribution rate

1.45% Medicare contribution rate

0.30% SUI contribution

2.00% Workers' Compensation contribution

9.709% PERS Employer contribution rate

3.311% PERS Reduction

Health & Welfare

The premium for District-paid employee health benefits is increased by 6.49% in the 2010 calendar year.

Retiree Health & Welfare Benefits:

The 2009-10 projected total pay-as-you-go retiree benefits are \$893,832.

Summer Schools:

The cost of Summer Schools is \$629,580.

The American Recovery and Reinvestment Act

The District is using ARRA – IDEA funds to create 25.875 FTEs new positions for Special Education since 2/17/09.

The District is using the State Fiscal Stabilization Fund (SFSF) to support Summer Intervention programs, reading specialists, teachers, student assessment, staff training, intervention counselors, nurses, administrators and administrative assistants for those programs. The District also will use this fund to purchase the new student data processing system.

The ARRA – Title I money is allocated to Title I Schools to fund the extra teaching positions and staff development activities.

Others:

Although the requirement is suspended for the 2009-10 fiscal year, the District is budgeting 3% of the total General Fund (Restricted and Unrestricted) budget for the Ongoing Maintenance Program.

The cost of Property and Liability Insurance is \$1,073,070.

TRANSFERS

The Indirect Rate is 7.03% in 2009-10.

Previous transfers from Fund 21 to the Ongoing Maintenance Program (Fund 01) have been reserved in the fund balance to be returned to Fund 21. No additional transfers will be made.

RESERVE for ECONOMIC UNCERTAINTIES

Under the State Criteria and Standards, the District Budget should reflect a 3% reserve of the total General Fund Budget for 2009-10, 2010-11 and 2011-12.

The following documents include:

- Summary General Fund Budget
- 2009-10 Major Categorical Programs
- Local General Fund Contribution (LGFC)
- Multi-year Financial Projection (MYFP) through 2011-12
- Summary of Major Funds
- Projected Ending Fund Balance

The complete 2009-10 District First Interim Budget in the State Standard Account Code Structure (SACS) format is attached to the Agenda as Attachment A (*green pages*).

MOTION MADE BY: Mr. Allen

SECONDED BY: Dr. Escarce

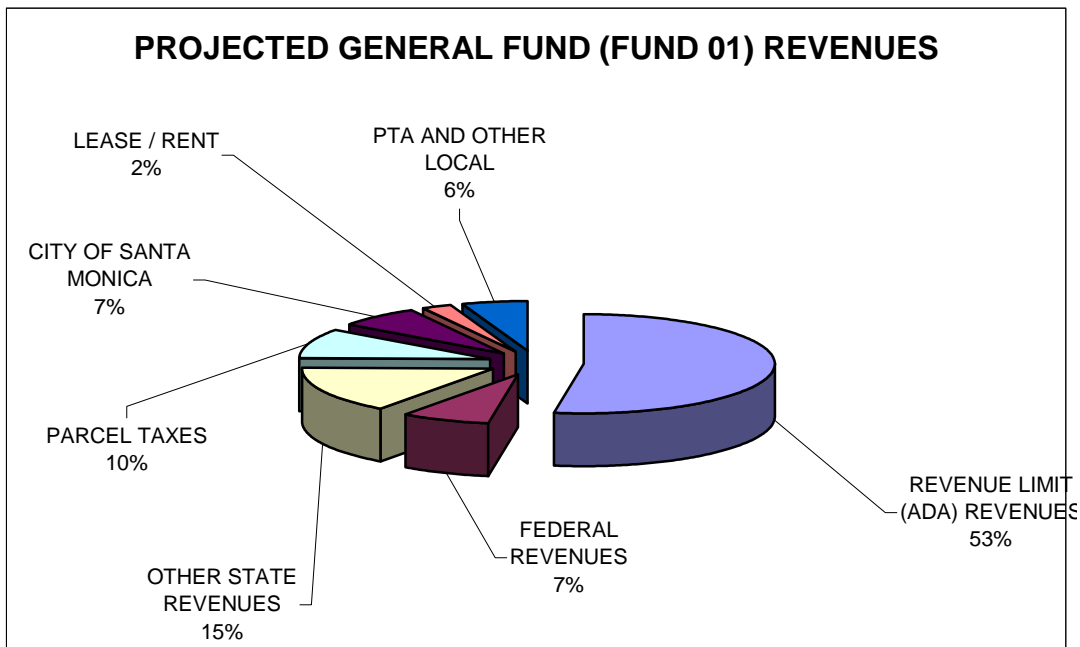
STUDENT ADVISORY VOTE: N/A

AYES: All (5) (Ms. Leon-Vazquez and Mr. de la Torre were absent)

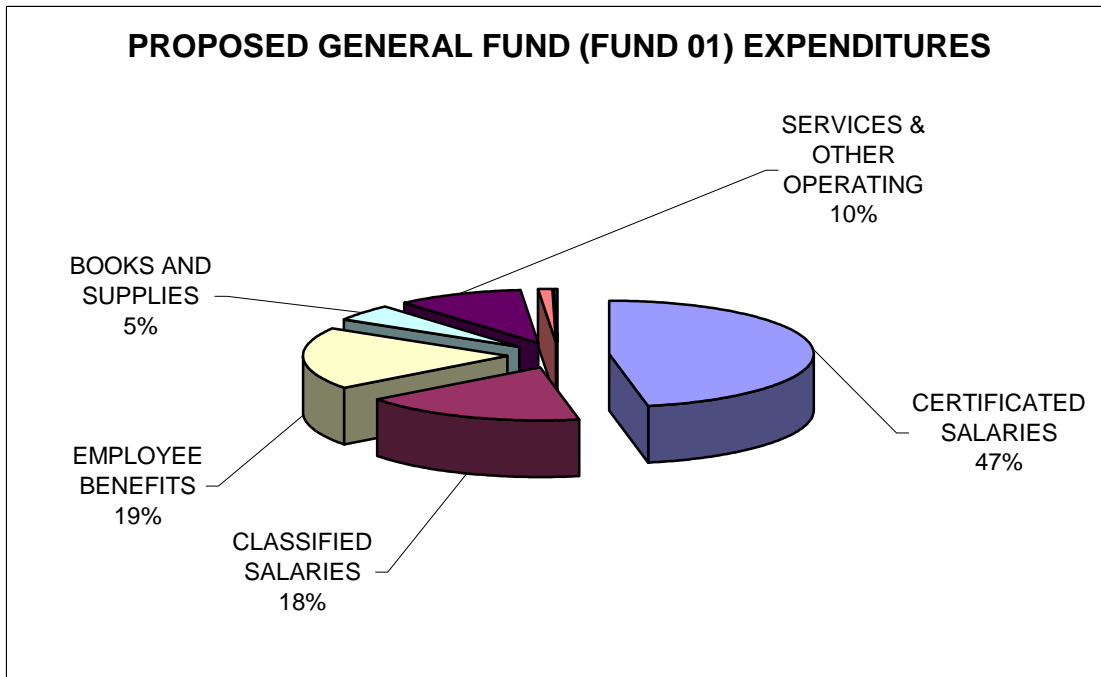
NOES: None (0)

SANTA MONICA-MALIBU UNIFIED SCHOOL DISTRICT 2009-10 FIRST INTERIM

PROJECTED REVENUES:	
REVENUE LIMIT (ADA) REVENUES	56,123,772
FEDERAL REVENUES	7,831,123
OTHER STATE REVENUES	16,514,397
PARCEL TAXES	10,264,436
CITY OF SANTA MONICA	7,443,913
LEASE / RENT	2,662,993
PTA AND OTHER LOCAL	5,938,297
TOTAL REVENUES:	106,778,931



PROPOSED EXPENDITURES:	
CERTIFICATED SALARIES	57,816,803
CLASSIFIED SALARIES	21,839,084
EMPLOYEE BENEFITS	23,422,907
BOOKS AND SUPPLIES	6,268,958
SERVICES & OTHER OPERATING	12,195,668
CAPITAL OUTLAY	1,298,062
OTHER OUTGO	(419,295)
TOTAL EXPENDITURES:	122,422,187



**SANTA MONICA-MALIBU UNIFIED SCHOOL DISTRICT
2009-2010 MAJOR CATEGORICAL PROGRAMS**

	2009-10 ADOPTED BUDGET	2009-10 1ST INTERIM BUDGET	CHANGE
FEDERAL PROGRAMS			
TITLE I :BASIC	1,070,959	1,388,054	317,095
ARRA - TITLE I BASIC	638,497	638,497	-
ARRA - STATE FISCAL STABILIZATION FUND (SFSF)	1,500,845	912,353	(588,492)
TITLE II :TEACHER QUALITY	436,274	536,281	100,007
TITLE II: ENHANCING ED THROUGH TECH	9,500	20,256	10,756
TITLE II: ENHANCING ED THROUGH TECH PART D	-	29,054	29,054
TITLE III : LEP	136,325	136,325	-
TITLE IV: DRUG FREE SCHOOL	33,850	39,802	5,952
TITLE V: INNOVATIVE EDUCATION	6,512	16,059	9,547
OTHER ARRA	-	26,196	26,196
MEDI-CAL REIMBURSEMENT	125,000	125,000	-
SP ED: IDEA ENTITLEMENT	2,432,955	2,432,957	2
ARRA - IDEA SEC. 611/619	1,284,988	1,284,988	-
DEPT REHAB: TRANSITION PARTNERSHIP PROGRAM	137,946	137,946	-
TOTAL FEDERAL REVENUES:	7,813,651	7,723,768	(89,883)
STATE PROGRAMS			
SPECIAL EDUCATION - AB602	6,592,724	6,412,914	(179,810)
WORKABILITY	58,256	58,256	-
HOME TO SCHOOL TRANSPORTATION	508,230	466,908	(41,322)
SPECIAL ED TRANSPORTATION	470,494	432,242	(38,252)
ECONOMIC IMPACT AID	878,163	878,163	-
ENGLISH LANGUAGE ACQUISITION (ELAP)	51,858	57,332	5,474
TOBACCO-USE PREVENT ED: 4-8	15,651	41,575	25,924
LOTTERY -INSTRUCTIONAL MATERIALS	133,423	133,423	-
REGIONAL OCCUPATIONAL PROGRAM (ROP)	1,034,654	1,034,654	-
TIER III PROGRAMS	3,161,869	3,184,700	22,831

**SANTA MONICA-MALIBU UNIFIED SCHOOL DISTRICT
LOCAL GENERAL FUND CONTRIBUTION (LGFC)**

	2008-09 ACTUALS	2009-10 ADOPTED BUDGET	2009-10 FIRST INTERIM	CHANGE
SPECIAL EDUCATION	10,354,908	11,655,715	11,760,708	104,993
SPECIAL EDUCATION TRANSPORTATION*	379,662	559,817	592,876	33,059
NATIONAL BOARD CERTIFICATION***	5,020	-	-	-
MULTI-CULTURAL PROGRAM	480,626	500,000	500,000	-
REGIONAL OCCUPATIONAL PROGRAM	8,700	8,700	8,700	-
HOME TO SCHOOL TRANSPORTATION**	-	102,330	141,628	39,298
ONGOING MAINTENANCE PROGRAM	3,430,670	3,289,054	3,518,021	228,967
		-		-
TOTAL CONTRIBUTION:	14,659,586	16,115,616	16,521,933	406,317

**SANTA MONICA-MALIBU UNIFIED SCHOOL DISTRICT
2009-10 PROJECTED ENDING FUND BALANCE AS OF JUNE 30, 2010**

	FUND	PROJECTED END FUND BALANCE AS OF 6/30/10
01	GENERAL FUND UNRESTRICTED	\$12,383,666
	RESTRICTED	1,741,640
11	ADULT EDUCATION	267,926
12	CHILD DEVELOPMENT FUND	100,038
13	CAFETERIA FUND	417,461
14	DEFERRED MAINTENANCE FUND	1,015,093
20	SPECIAL RESERVE FUND FOR POSTEMPLOYMENT BENEFITS	1,749,470
21	BUILDING FUND	77,098,252
25	CAPITAL FACILITIES FUND	1,590,961
40	SPECIAL RESERVE FUND FOR CAPITAL OUTLAY PROJECTS	4,353,023
56	DEBT SERVICES FUND	1,264

**SANTA MONICA - MALIBU USD
MULTI-YEAR PROJECTION
UNRESTRICTED GENERAL FUND - ASSUMPTIONS
10/31/2009**

Factor	2009-10	2010-11	2011-12
Statutory COLA	4.25%	0.50%	2.30%
Base Revenue Limit Per P2 ADA	\$ 6,469.84	6,501.84	\$ 6,649.84
Deficit Factor	-18.355%	-18.355%	-18.355%
One Time Reduction	\$ (252.83)		
Enrollment Projection*	11,607	11,565	11565
P2 ADA Projection	11,032	11,031	11,031
Revenue Limit ADA (Prior Yr)	11,031	11,031	11,031
Federal Revenues	0%	0%	0%
City of Santa Monica	\$ 7,443,913	\$ 7,592,791	\$ 7,744,647
Measure "R"	\$ 10,264,436	\$ 10,367,080	\$ 10,574,422
Lottery	\$121/ADA	\$121/ADA	\$121/ADA
Salary Increase: Certificated*	\$600,000	0%	0%
Salary Increase: Management	0%	0%	0%
Salary Increase: Classified	0%	0%	0%
Step & Column Incr. - Certificated	1.50%	1.50%	1.50%
Step & Column Incr. - Mgmt.	1.50%	1.50%	1.50%
Step & Column Incr. - Classified	1.50%	1.50%	1.50%
Reduction Plan - Certificated		84 FTEs	
Reduction Plan - Classified		25.5 FTEs	
Reduction Plan - Management		3 FTEs	
Reduction Plan - Others*		\$ 1,245,000	
Health/Welfare	5%	7%	7%
Workers' Compensation	2%	2%	2%
Indirect Cost Rate	7.03%	5.00%	5.00%
Interest Rate	1.80%	2.50%	2.50%
Interfund Transfer to Fund 12	\$ 75,000	\$ 75,000	\$ 75,000
Ongoing Maintenance	3%	3%	3%
Reserve for Uncertainties	3%	3%	3%

***OTHER REDUCTIONS:**

SUMMER SCHOOL	\$ 500,000
READING SPECIALISTS	\$ 240,000
ENERGYCONSERVATION	\$ 200,000
CONTRACTS	\$ 200,000
CONFERENCE/TRANSPORTATION/CELL PHONE	\$ 105,000

SANTA MONICA - MALIBU USD
MULTI-YEAR PROJECTION
UNRESTRICTED GENERAL FUND
10/31/2009

Description	2009-10 BUDGET	2010-11 PROJECTED	2011-12 PROJECTED
Revenue:			
Revenue Limit	54,365,565	57,420,846	58,737,987
Other Federal	100,000	100,000	100,000
Other State Apportionments	748,847	752,166	767,516
Class Size Reduction	2,817,533	2,817,533	2,817,533
<i>Possible CSR penalty</i>		(1,160,000)	(1,160,000)
Other State (Lottery...)	1,270,460	1,270,460	1,270,460
Meas. "R"	10,264,436	10,367,080	10,574,422
All Other Local Income	10,947,440	11,337,584	11,389,440
Interfund Transfer In	108,335		
Local General Fund Contribution	(16,521,933)	(17,115,616)	(17,115,616)
Possible Decrease of LGFC		500,000	500,000
TIER III - Categorical Flexibility	3,187,700	3,187,700	3,187,700
	67,288,383	69,477,753	71,069,442
Expenditure:			
Certificated Salary	43,858,700	46,148,859	40,285,322
<i>Possible Reduction Plan</i>		(6,458,886)	
Classified Salaries	11,162,806	11,579,192	11,272,656
<i>Possible Reduction Plan</i>		(473,127)	
Benefits	16,396,162	17,599,355	16,444,436
<i>Possible Reduction Plan</i>		(1,937,987)	
Supplies/Books	1,369,732	1,369,732	1,369,732
Other Operational Costs	5,679,671	6,245,164	5,740,164
<i>Possible Reduction Plan</i>		(505,000)	
Capital Outlay	25,000		
Indirect	(1,205,965)	(843,200)	(843,200)
Transfer Out	75,000	75,000	75,000
	77,361,106	72,799,101	74,344,110
Increase (Decrease) Fund Balance	(10,072,723)	(3,321,348)	(3,274,669)
Beginning	22,456,389	10,355,293	7,033,945
<i>REPAYMENT TO FUND 21</i>	(2,028,373)		
Fund Balance	10,355,293	7,033,945	3,759,276
Reserve- Revolving cash, Store	125,000	125,000	125,000
Total Available Fund Balance	10,230,293	6,908,945	3,634,276
3% Contingency Reserve	3,672,666	3,321,845	3,385,708
Unappropriated Balance	6,557,627	3,587,100	248,568

**SANTA MONICA-MALIBU UNIFIED SCHOOL DISTRICT
SUMMARY BUDGET OF MAJOR FUNDS**

FUND 01: UNRESTRICTED GENERAL FUND

	2009-10 ADOPTED BUDGET	2009-10 1ST INTERIM BUDGET	CHANGES
BEGINNING BALANCE	22,456,389	22,456,389	-
REVENUES			-
REVENUE LIMIT	57,425,482	54,365,565	(3,059,917)
FEDERAL REVENUE	100,000	100,000	-
OTHER STATE REVENUE	7,955,762	8,024,540	68,778
LOCAL REVENUES	21,241,994	21,211,876	(30,118)
INTERFUND TRANSFER	(15,115,616)	(16,413,598)	(1,297,982)
TOTAL REVENUES	71,607,622	67,288,383	(4,319,239)
EXPENDITURES			
CERTIFICATED SALARIES	45,343,893	43,858,700	(1,485,193)
CLASSIFIED SALARIES	11,379,035	11,162,806	(216,229)
EMPLOYEE BENEFITS	16,745,095	16,396,162	(348,933)
BOOKS AND SUPPLIES	1,533,800	1,369,732	(164,068)
SERVICES & OTHER OPERATING	6,070,945	5,679,671	(391,274)
CAPITAL OUTLAY	25,000	25,000	-
OTHER OUTGO	(918,053)	(1,130,965)	(212,912)
TOTAL EXPENDITURES	80,179,715	77,361,106	(2,818,609)
NET INCREASE (DECREASE)	(8,572,093)	(10,072,723)	
PROJECTED FUND BALANCE	13,884,296	12,383,666	(1,500,630)

FUND 01 - RESTRICTED GENERAL FUND

	2009-10 ADOPTED BUDGET	2009-10 1ST INTERIM BUDGET	CHANGES
BEGINNING BALANCE	7,312,173	7,312,173	-
REVENUES			
REVENUE LIMIT	1,766,563	1,758,207	(8,356)
FEDERAL REVENUE	7,813,651	7,731,123	(82,528)
OTHER STATE REVENUE	2,125,119	2,076,943	(48,176)
LOCAL REVENUES	9,268,086	11,402,342	2,134,256
INTERFUND TRANSFER	16,115,616	16,521,933	406,317
TOTAL REVENUES	37,089,035	39,490,548	2,401,513
EXPENDITURES			
CERTIFICATED SALARIES	12,148,194	13,958,103	1,809,909
CLASSIFIED SALARIES	9,361,752	10,676,278	1,314,526
EMPLOYEE BENEFITS	6,593,889	7,026,745	432,856
BOOKS AND SUPPLIES	2,319,394	4,899,226	2,579,832
SERVICES & OTHER OPERATING	5,165,964	6,515,997	1,350,033
CAPITAL OUTLAY	1,098,000	1,273,062	175,062
OTHER OUTGO	408,896	711,670	302,774
TOTAL EXPENDITURES	37,096,089	45,061,081	7,964,992
NET INCREASE (DECREASE)	(7,054)	(5,570,533)	
PROJECTED FUND BALANCE	7,305,119	1,741,640	(5,563,479)

FUND 11- ADULT EDUCATION

	2009-10 ADOPTED BUDGET	2009-10 1ST INTERIM BUDGET	CHANGES
BEGINNING BALANCE	272,942	272,942	-
REVENUES			
FEDERAL REVENUE	121,706	122,801	1,095
OTHER STATE REVENUE	398,463	419,932	21,469
LOCAL REVENUES	23,875	36,999	13,124
TOTAL REVENUES	544,044	579,732	35,688
EXPENDITURES			
CERTIFICATED SALARIES	262,153	272,787	10,634
CLASSIFIED SALARIES	129,531	129,986	455
EMPLOYEE BENEFITS	91,125	92,876	1,751
BOOKS AND SUPPLIES	20,624	48,385	27,761
SERVICES & OTHER OPERATING	24,601	24,701	100
OTHER OUTGO	16,013	16,013	-
TOTAL EXPENDITURES	544,047	584,748	40,701
NET INCREASE (DECREASE)	(3)	(5,016)	
PROJECTED FUND BALANCE	272,939	267,926	(5,013)

FUND 12 - CHILD DEVELOPMENT FUND

	2009-10 ADOPTED BUDGET	2009-10 1ST INTERIM BUDGET	CHANGES
BEGINNING BALANCE	70,799	70,799	-
REVENUES			
FEDERAL REVENUE	1,942,690	2,099,992	157,302
OTHER STATE REVENUE	3,153,433	3,020,500	(132,933)
LOCAL REVENUES	2,901,107	3,054,472	153,365
INTERFUND TRANSFER	75,000	75,000	-
TOTAL REVENUES	8,072,230	8,249,964	177,734
EXPENDITURES			
CERTIFICATED SALARIES	2,878,083	3,038,526	160,443
CLASSIFIED SALARIES	2,121,698	2,076,016	(45,682)
EMPLOYEE BENEFITS	1,526,945	1,594,169	67,224
BOOKS AND SUPPLIES	277,969	199,193	(78,776)
SERVICES & OTHER OPERATING	848,185	869,990	21,805
CAPITAL OUTLAY	5,000	-	(5,000)
OTHER OUTGO	424,358	442,831	18,473
TOTAL EXPENDITURES	8,082,238	8,220,725	138,487
NET INCREASE (DECREASE)	(10,008)	29,239	
PROJECTED FUND BALANCE	60,791	100,038	39,247

CHILD DEVELOPMENT MAJOR PROGRAMS			
FEDERAL BLOCK GRANT	154,810	154,810	-
HEAD START	1,519,554	1,637,667	118,113
OTHER FEDERAL PROGRAMS	280,843	322,182	41,339
STATE PRESCHOOL (GCTR)	1,444,007	1,273,155	(170,852)
GENERAL CHILD CARE	2,644,392	2,615,109	(29,283)
LATCHKEY (GLTK)	463,813	101,853	(361,960)
CALSAFE CHILD CARE & DEVELOP	30,254	269,533	239,279
L. A. UNIVERSAL PRESCHOOL	472,472	497,363	24,891

FUND 13: CAFETERIA SPECIAL FUND

	2009-10 ADOPTED BUDGET	2009-10 1ST INTERIM BUDGET	CHANGES
BEGINNING BALANCE	417,461	417,461	-
REVENUES	-		
FEDERAL REVENUE	1,079,257	1,144,597	65,340
OTHER STATE REVENUE	41,678	41,678	-
LOCAL REVENUES	2,401,260	2,401,260	-
TOTAL REVENUES	3,522,195	3,587,535	65,340
EXPENDITURES			
CLASSIFIED SALARIES*	1,454,345	1,454,345	-
EMPLOYEE BENEFITS	494,872	494,872	-
BOOKS AND SUPPLIES	1,660,622	1,673,671	13,049
SERVICES & OTHER OPERATING	(278,230)	(283,880)	(5,650)
CAPITAL OUTLAY	40,000	97,941	57,941
OTHER OUTGO	150,586	150,586	-
TOTAL EXPENDITURES	3,522,195	3,587,535	65,340
NET INCREASE (DECREASE)	-	-	
PROJECTED FUND BALANCE	417,461	417,461	-

FUND 14: DEFERRED MAINTENANCE FUND

	2009-10 ADOPTED BUDGET	2009-10 1ST INTERIM BUDGET	CHANGES
BEGINNING BALANCE	2,710,593	2,710,593	-
REVENUES			
OTHER STATE REVENUE	-	-	-
LOCAL REVENUES	50,000	50,000	-
TOTAL REVENUES	50,000	50,000	-
EXPENDITURES			
BOOKS AND SUPPLIES	5,000	5,000	-
SERVICES & OTHER OPERATING	1,200,000	1,740,500	540,500
CAPITAL OUTLAY	-	-	-
TOTAL EXPENDITURES	1,205,000	1,745,500	540,500
NET INCREASE (DECREASE)	(1,155,000)	(1,695,500)	
PROJECTED FUND BALANCE	1,555,593	1,015,093	(540,500)

FUND 20: SPECIAL RESERVE FUND FOR POSTEMPLOYMENT BENEFITS

	2009-10 ADOPTED BUDGET	2009-10 1ST INTERIM BUDGET	CHANGES
BEGINNING BALANCE	1,714,470	1,714,470	-
REVENUES			
INTEREST	35,000	35,000	-
TOTAL REVENUES	35,000	35,000	
PROJECTED FUND BALANCE	1,749,470	1,749,470	-

FUND 21: BUILDING FUND

	2009-10 ADOPTED BUDGET	2009-10 1ST INTERIM BUDGET	CHANGES
BEGINNING BALANCE	38,667,509	38,667,509	
REVENUES			
PROCEEDS - SALE OF BONDS	80,000,000	80,000,000	-
INTERFUND TRANSFER	-	-	-
LOCAL REVENUES	2,000,000	2,000,000	-
TOTAL REVENUES	82,000,000	82,000,000	-
EXPENDITURES			
CLASSIFIED SALARIES	291,424	291,424	-
EMPLOYEE BENEFITS	121,003	121,003	-
BOOKS AND SUPPLIES	77,700	77,700	-
SERVICES & OTHER OPERATING	25,151,880	25,151,880	-
CAPITAL OUTLAY	17,927,250	17,927,250	-
OTHER OUTGO	1,000,000	-	(1,000,000)
TOTAL EXPENDITURES	44,569,257	43,569,257	(1,000,000)
NET INCREASE (DECREASE)	37,430,743	38,430,743	
PROJECTED FUND BALANCE	76,098,252	77,098,252	1,000,000

FUND 25: CAPITAL FACILITIES FUND

	2009-10 ADOPTED BUDGET	2009-10 1ST INTERIM BUDGET	CHANGES
BEGINNING BALANCE	970,961	970,961	-
REVENUES			
DEVELOPMENT FEE	600,000	600,000	-
INTEREST	20,000	20,000	-
TOTAL REVENUES	620,000	620,000	-
EXPENDITURES			
OTHER OUTGO	-	-	-
TOTAL EXPENDITURES	-	-	-
NET INCREASE (DECREASE)	620,000	620,000	
PROJECTED FUND BALANCE	1,590,961	1,590,961	-

FUND 40: SPECIAL RESERVE FUND FOR CAPITAL OUTLAY

	2009-10 ADOPTED BUDGET	2009-10 1ST INTERIM BUDGET	CHANGES
BEGINNING BALANCE	3,780,431	3,780,431	-
REVENUES			
REDEVELOPMENT	1,600,000	1,743,917	143,917
INTEREST	80,000	80,000	-
TOTAL REVENUES	1,680,000	1,823,917	143,917
EXPENDITURES			
SERVICES & OTHER OPERATING	102,000	102,000	-
CAPITAL OUTLAY			-
OTHER OUTGO	1,149,325	1,149,325	-
TOTAL EXPENDITURES	1,251,325	1,251,325	-
NET INCREASE (DECREASE)	428,675	572,592	
PROJECTED FUND BALANCE	4,209,106	4,353,023	143,917

DISCUSSION ITEMS

TO: BOARD OF EDUCATION

DISCUSSION

12/10/09

FROM: TIM CUNEO / CHIUNG-SALLY CHOU

RE: INTENSIVE INTERVENTION SUMMER SCHOOL (IISS) PROGRAM 2010-11

RECOMMENDATION NO. D.01

It is recommended that the district provides the 2010-11 Intensive Intervention Summer School (IISS) as follows:

High School:

Programs: ELD, AVID SS, Credit Recovery, and Extended School Year (ESY Special Education) for students from Santa Monica HS, Malibu HS (with credit recovery participating at SMHS), Olympic HS, Off Campus Learning Center, and online courses

Duration: Six weeks totaling 120 hours

Targeted population: Rising 9th graders (Connect for Success) with CST scores of 1 & 2 in English Language Arts and/or Mathematics and failing grades, high school students needing credit recovery, and special education students

Middle School:

Programs: JumpStart and Extended School Year (ESY Special Education) at John Adams, Lincoln, and Malibu

Duration: Four weeks totaling 80 hours

Targeted population: Rising 6th graders with CST scores of 1 & 2 in English Language Arts and/or Mathematics and special education students

Elementary School:

Program: Extended School Year (ESY Special Education) at an elementary location co-located with SMMEF/PTA Summer Adventure in both Santa Monica and Malibu

COMMENT: The following programs were offered in the past and will not be offered this coming summer, resulting in a saving of approximately \$250,000:

- Rising 3rd, 4th, and 5th graders with CST scores of 1 & 2 in English Language Arts and/or Mathematics in the elementary schools
- Rising 7th and 8th graders with CST scores of 1 & 2 in English Language Arts and/or Mathematics in the middle schools

Title I schools will be able to provide their own summer enrichment programs at their respective sites or one clustered site.

The Young Collegians will be provided with summer coursework at Santa Monica College.

Dr. Chou's handout can be found under Attachments at the end of these minutes.

In response to a question from Mr. Allen, Dr. Chou explained that the additional Title I funding used for IISS is from federal stimulus funds.

Mr. Mechur suggested combining summer school with enrichment programs. Dr. Escarce argued that IISS is not enrichment, but rather intervention. Dr. Escarce said he could not support cutting IISS. Mr. Snell shared Dr. Escarce's concern.

Ms. Pye inquired about Title I funds for summer school. Dr. Chou explained that the language of Title I requirements has changed to read "enrichment," instead of just "intervention," to emphasize a focus on moving skills forward, not just remediation. These funds could be used in K-5 summer school if the Title I sites decide to use the money for that purpose.

Dr. Escarce said he would like a future recommendation to the board not to include the elimination of IISS. The board agreed that this item would come back for further discussion.

ATTACHMENTS

Attached are the following documents:

- Presentation: "Washington CDS Project: Scope Adjustment Measure BB" (relates to Item No. A.33)
- Presentation: "2009-10 First Interim Report" (relates to Item No. A.35)
- Document: "Below Basic Students on 2009 CST and CMA" (relates to Item No. D.01)
- Packet: "Samohi Bands Equity Fund Contribution" (relates to Section XV in the Table of Contents)

Washington CDS Project Scope Adjustment Measure BB

Board of Education
12/10/09



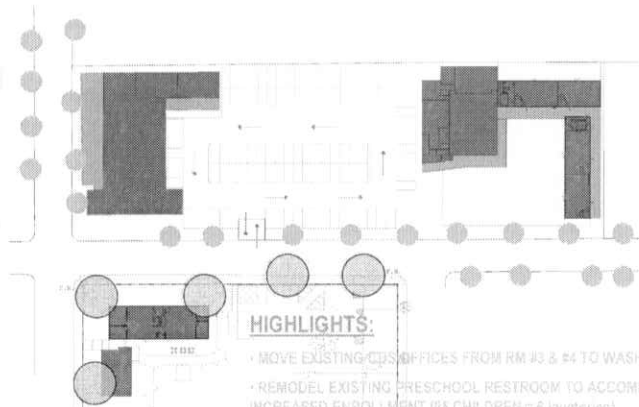
Washington CDS Project - Scope Adjustment

- Summer 2009 improvements funded in part by a Head Start grant
- Allocate savings from the project construction budget to fund feasibility study
 - Structural, programmatic and funding analysis
- Existing building at the 4th and Ashland currently in disrepair and underutilized
 - Safety and security issues
 - Neighborhood concerns
 - 1934 building; possible consideration as a historic resource

Washington CDS Project - Scope Adjustment

CDS	Amount
Project Budget	\$1,575,000
Reduced Scope	
Rooms 1, 2,3, 4 Completed	-\$155,000
Additional Scope	
Underground Electrical Conduit	\$30,000
Additional Fencing	\$25,000
Feasibility Study for (transfer to soft costs)	\$100,000
Revised Project Budget	\$1,575,000

MEASURE OR SCHEMATIC DESIGN SITE PLAN

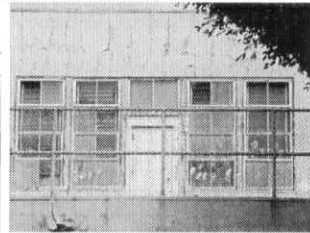
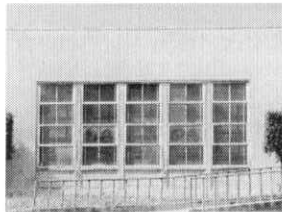
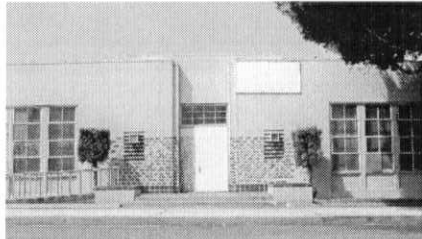


HIGHLIGHTS:

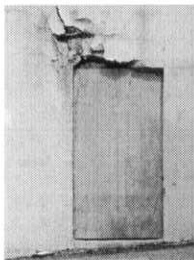
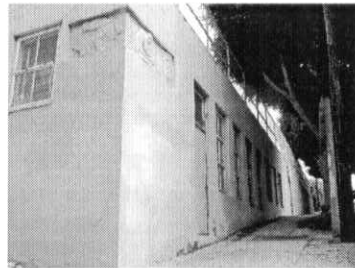
- MOVE EXISTING CDS OFFICES FROM RM #3 & #4 TO WASHINGTON EAST
- REMODEL EXISTING PRESCHOOL RESTROOM TO ACCOMMODATE INCREASED ENROLLMENT (65 CHILDREN = 6 lavatories)
- REMODEL RM #3 & #4 INTO PRESCHOOL CLASSROOMS
- RESTRIPE PARKING (100 STALLS) & RELOCATE VEHICULAR ENTRANCE

WASHINGTON EAST/WEST - SMMUSD

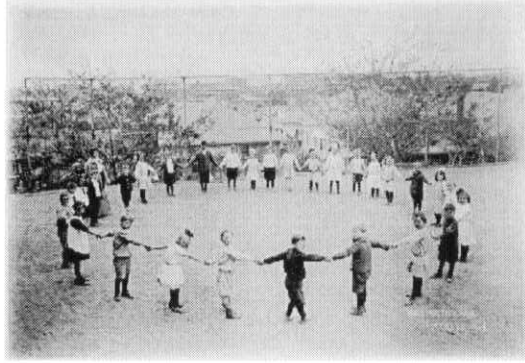
4th and Ashland Building



4th and Ashland Building



Washington Elementary School



end



SANTA MONICA MALIBU UNIFIED SCHOOL DISTRICT

**2009-10 FIRST INTERIM REPORT
DECEMBER 10, 2009
AGENDA ITEM A.35**

SMMUSD 1st Interim Report

- Shows District financial position as of October 31, 2009
- Displays the Adopted Budget, Current Actuals, and Projected Totals for each District fund
- Includes an analysis of standards for financial reporting proscribed by the State
- Projects the General Fund for the current and next two fiscal years
- Certifies one of three conditions: positive, negative or qualified

COMBINED GENERAL FUND (01)

	ADOPTED BUDGET	ACTUALS AS OF 10/31/09	2009-10 ESTIMATED ACTUALS	DIFFERENCE
REVENUE	108,696,657	13,013,178.00	106,778,931.00	(1,917,726.00)
EXPENDITURES	117,275,804	19,369,419.00	122,422,187.00	(5,146,383.00)
EXCESS OR (DEFICIENCY)	-8,579,147	(6,356,241.00)	(15,643,256.00)	(7,064,109.00)
BEGINNING BALANCE	29,768,562		29,768,562.00	-
PROJECTED ENDING BALANCE	21,189,415		14,125,306.00	(7,064,109.00)

GENERAL FUND (01)

Reserved Amounts

Stores Inventory 20,000

Designated Amounts

Reserve for Economic Uncertainties - 3% 3,672,666

Other Designations 2,133,373

Undesignated Amount

8,299,267

FUND BALANCE	14,125,306
---------------------	-------------------

ADULT EDUCATION (11)

	ADOPTED	ACTUALS	2009-10	
	BUDGET	AS OF	ESTIMATED	DIFFERENCE
		10/31/09	ACTUALS	-
REVENUE	544,044	59,812.00	579,732.00	35,688.00
EXPENDITURES	544,047	111,341.00	584,748.00	(40,701.00)
EXCESS OR (DEFICIENCY)	-3	(51,529.00)	(5,016.00)	(5,013.00)
BEGINNING BALANCE	272,942		272,942.00	-
PROJECTED ENDING BALANCE	272,939		267,926.00	(5,013.00)

CHILD DEVELOPMENT FUND (12)

	ADOPTED	ACTUALS	2009-10	
	BUDGET	AS OF	ESTIMATED	DIFFERENCE
		10/31/09	ACTUALS	-
REVENUE	8,072,230	2,242,775.00	8,249,965.00	177,735.00
EXPENDITURES	8,082,238	1,845,318.00	8,220,725.00	(138,487.00)
EXCESS OR (DEFICIENCY)	-10,008	397,457.00	29,240.00	39,248.00
BEGINNING BALANCE	70,799		70,799.00	-
PROJECTED ENDING BALANCE	60,791		100,039.00	39,248.00

CAFETERIA FUND (13)

	ADOPTED BUDGET	ACTUALS AS OF 10/31/09	2009-10 ESTIMATED ACTUALS	DIFFERENCE
REVENUE	3,522,195	402,528.00	3,587,535.00	65,340.00
EXPENDITURES	3,522,195	470,841.00	3,587,535.00	(65,340.00)
EXCESS OR (DEFICIENCY)	0	(68,313.00)	-	-
BEGINNING BALANCE	417,461		417,461.00	-
PROJECTED ENDING BALANCE	417,461		417,461.00	-

DEFERRED MAINTENANCE (14)

	ADOPTED BUDGET	ACTUALS AS OF 10/31/09	2009-10 ESTIMATED ACTUALS	DIFFERENCE
REVENUE	50,000	-	50,000.00	-
EXPENDITURES	1,205,000	552,145.00	1,745,500.00	(540,500.00)
EXCESS OR (DEFICIENCY)	(1,155,000)	(552,145.00)	(1,695,500.00)	(540,500.00)
BEGINNING BALANCE	2,710,593		2,710,593.00	-
PROJECTED ENDING BALANCE	1,555,593		1,015,093.00	(540,500.00)

POSTEMPLOYMENT BENEFITS (20)

	ADOPTED	ACTUALS	2009-10	
	BUDGET	AS OF	ESTIMATED	DIFFERENCE
		10/31/09	ACTUALS	
REVENUE	35,000	-	35,000.00	-
EXPENDITURES	0	-	-	-
EXCESS OR (DEFICIENCY)	35,000	-	35,000.00	-
BEGINNING BALANCE	1,714,470		1,714,470.00	-
PROJECTED ENDING BALANCE	1,749,470		1,749,470.00	-

BUILDING FUND (21)

	ADOPTED	ACTUALS	2009-10	
	BUDGET	AS OF	ESTIMATED	DIFFERENCE
		10/31/09	ACTUALS	
REVENUE	82,000,000	80,000,000.00	82,000,000.00	-
EXPENDITURES	44,569,258	6,437,896.00	43,569,257.00	1,000,001.00
EXCESS OR (DEFICIENCY)	37,430,742	73,562,104.00	38,430,743.00	1,000,001.00
BEGINNING BALANCE	38,667,509		38,667,509.00	-
PROJECTED ENDING BALANCE	76,098,251		77,098,252.00	1,000,001.00

CAPITAL FACILITIES FUND - DEVELOPER FEES (25)

	ADOPTED	ACTUALS	2009-10	
	BUDGET	AS OF	ESTIMATED	DIFFERENCE
		10/31/09	ACTUALS	
REVENUE	620,000	148,222.00	620,000.00	-
EXPENDITURES	0	-	-	-
EXCESS OR (DEFICIENCY)	620,000	148,222.00	620,000.00	-
BEGINNING BALANCE	970,961		970,961.00	-
PROJECTED ENDING BALANCE	1,590,961		1,590,961.00	-

SPECIAL RESERVE - BOND INTEREST (40)

	ADOPTED	ACTUALS	2009-10	
	BUDGET	AS OF	ESTIMATED	DIFFERENCE
		10/31/09	ACTUALS	
REVENUE	1,680,000	1,743,916.00	1,823,917.00	143,917.00
EXPENDITURES	1,251,325	314,537.00	1,251,325.00	-
EXCESS OR (DEFICIENCY)	428,675	1,429,379.00	572,592.00	143,917.00
BEGINNING BALANCE	3,780,431		3,780,431.00	-
PROJECTED ENDING BALANCE	4,209,106		4,353,023.00	143,917.00

BOND INTEREST AND REDEMPTION FUND (51)

	ADOPTED BUDGET	ACTUALS AS OF 10/31/09	2009-10 ESTIMATED ACTUALS	DIFFERENCE
REVENUE	16,004,673		- 16,965,907.00	961,234.00
EXPENDITURES	17,419,487		- 18,922,474.00	(1,502,987.00)
EXCESS OR (DEFICIENCY)	-1,414,814		- (1,956,567.00)	(541,753.00)
BEGINNING BALANCE	14,721,929		15,700,903.00	978,974.00
PROJECTED ENDING BALANCE	13,307,115		13,744,336.00	437,221.00
Fund used for collection of property taxes and debt service payments on the General Obligation Bonds				

DEBT SERVICE FUND (56)

	ADOPTED BUDGET	ACTUALS AS OF 10/31/09	2009-10 ESTIMATED ACTUALS	DIFFERENCE
REVENUE	20		- 20.00	-
EXPENDITURES	0		-	-
EXCESS OR (DEFICIENCY)	20		- 20.00	-
BEGINNING BALANCE	1,244		1,244.00	-
PROJECTED ENDING BALANCE	1,264		1,264.00	-

Multiyear Projections

- Without change the District will:
 - have a negative fund balance of over 1.5 million dollars by the end of 2010-11
 - annually be spending over 12.0 million dollars more than we receive
 - be subject to more oversight by LACOE and the State

Positive Certification of 1st Interim

- The District is submitting the 1st Interim Report with a positive certification.
- This means the District will be able to meet it's obligations in the current and next two fiscal years.
- How can we submit a positive certification if we show a negative fund balance next year
 - Provide a Reduction Plan that requires only Board action
 - Can not include revenue that might occur with voter approval or unsettled labor negotiations

Reduction Plan for 2010-11

- As discussed in a Board Workshop on November 21, 2009
- The District has identified over 8.7 million dollars in potential reductions
 - Non employee reductions include: travel/conference, energy conservation, contracts, fees, and cell phones
 - Class size increases in all grades
 - Reduction of positions providing counseling, security, reading support, elementary music, library services, custodial and maintenance services, nursing, district wide support
 - Reduction of summer programs for students
 - A total reduction of 112.5 positions

Below and Far Below Basic Students on 2009 CST and CMA

	ELA		Math	
	# of 1s & 2s	% 1s & 2s	# of 1s & 2s	% 1s & 2s
Cabrillo				
Grade 2	5	11%	9	19%
Grade 3	10	24%	8	20%
Grade 4	2	4%	5	9%
Grade 5	9	16%	12	22%
Edison				
Grade 2	15	20%	7	9%
Grade 3	12	17%	10	14%
Grade 4	3	5%	1	2%
Grade 5	4	6%	5	8%
Franklin				
Grade 2	9	6%	4	3%
Grade 3	8	6%	3	2%
Grade 4	0	0%	0	0%
Grade 5	6	4%	9	7%
Grant				
Grade 2	13	13%	8	8%
Grade 3	18	15%	13	11%
Grade 4	7	6%	5	5%
Grade 5	8	7%	14	13%
McKinley				
Grade 2	3	5%	2	4%
Grade 3	7	12%	3	5%
Grade 4	7	10%	5	7%
Grade 5	4	6%	16	24%
Muir				
Grade 2	11	21%	8	15%
Grade 3	13	30%	5	12%
Grade 4	4	9%	3	7%
Grade 5	8	13%	12	19%
Point Dume				
Grade 2	0	0%	0	0%
Grade 3	2	4%	0	0%
Grade 4	0	0%	0	0%
Grade 5	0	0%	2	4%
Rogers				
Grade 2	19	21%	13	15%
Grade 3	17	30%	10	12%
Grade 4	11	13%	12	14%
Grade 5	11	12%	20	21%
Roosevelt				
Grade 2	7	6%	10	8%
Grade 3	7	6%	6	5%
Grade 4	1	<1%	2	2%
Grade 5	3	3%	5	4%
SMASH				
Grade 2	2	13%	2	13%
Grade 3	1	6%	2	11%
Grade 4	4	22%	5	29%
Grade 5	3	18%	3	20%
Webster				
Grade 2	2	4%	1	2%
Grade 3	3	4%	1	1%
Grade 4	0	0%	0	0%
Grade 5	1	1%	3	3%

From: DianeA@landmarktheatres.com
 Sent: 7/13/2009 11:04:14 A.M. Pacific Daylight Time
 Subj: Band Equity Fund Contribution

The following is what the Samohi Bands owe to the SMMUSD Equity Fund (15%). A copy of the Equity Fund policy is attached for your review. The Equity Fund has been discussed at our Band Parent Meetings and the minutes from those meetings can be found on our website at <http://samohiband.org/newhomepage/smbpa.html>.

Questions regarding the fund have been most accurately addressed by Sally Chou, Chief Academic Officer, schou@smmusd.org, (310) 450-8338 x 239.

Samohi Bands 2009-2010 Staff and Steering Committee

SAMOHI BANDS EQUITY FUND CONTRIBUTION			
05-06			
equipment	11,459.07		
instruction	37,045.00		
instruments	13,229.68		
repairs/supplies	190.84		
TOTAL	61,924.59	15%	9,288.69
06-07			
equipment	1,311.85		
instruction	56,494.74		
instruments	2,595.38		
repairs/supplies	1,051.01		
TOTAL	61,452.98	15%	9,217.95
07-08			
equipment	67,243.82		
instruction	63,098.01		
instruments	3,052.88		
TOTAL	133,394.71	15%	20,009.21
08-09			
equipment	1,208.66		
instruction	59,343.08		
instruments	4,825.79		
repairs/supplies	973.19		
TOTAL	66,350.72	15%	9,952.61
GRAND TOTAL			48,468.45

Instrument lockers: \$65,390.58
 15% = \$9,808.59

If \$5,000 exemption was taken
 on lockers,
 15% = \$9,058.59

Instruments purchased in 08-09
 After May 7, 2009, would be exempt,
 but no accounting was provided
 to determine that.

There are four (4) types of revenue sources to the district in the area of grants and gifts:

- (1) Gifts to the district
- (2) Grants to the district
- (3) Gifts to a site/school
- (4) Grants to a site/school

It is not the intent of this policy to discourage grants from private or public philanthropy.

All gifts given to either a site/school or district shall be required to make the 15% established donation to the Equity Achievement Fund.

Grants to the district shall be considered on a case-by-case basis. When the Board accepts each grant (as is normally required), it would also decide if the individual grant should be subjected to the guidelines of the policy or not. A test of how equitable the grant funds are to be distributed will be a guiding principle when making this type of decision.

Grants applied for and given to individual sites/schools shall be exempted from the policy. However, no grant will be submitted or accepted unless it is reviewed by the Assistant Superintendent/ Chief Academic Officer.

2. Exemptions:

The following items are exempt from mandatory contributions to the Equity Achievement Fund:

- a. ASB activities initiated and administered by students.
- b. Operational costs of any organization contributing to the fund.
- c. Any expenditure made by any organization ~~covered by this policy that does not provide a donation explicitly to the Santa Monica-Malibu Unified Public Schools that is not for the direct benefit of students or staff.~~
- d. Field trips for students.
- e. Scholarships (either academic or to ameliorate fiscal hardship for a student in order to participate in a school sponsored activity).
- f. District approved capital programs.
- g. Grants as noted above.
- h. Non-monetary gifts: The first \$5,000 of assessed value from any donor is exempt. Any amount of value over \$5,000 is subject to the 15% portion of the policy. If a donor gives multiple gifts in a fiscal year, when totaled, the amount above \$5,000 is subject to the policy.
- i. Funds supporting copy machines, i.e. purchase, maintenance agreements, etc.

Partial list of fixed assets added to Barnum Hall from 1999 to 2009

None of these donor-funded elements was taxed because of the gift policy's exemption for district-approved capital programs

250 seats in the upper balcony
Wurlitzer theater organ
Concert grand piano
Improvements to Wenger acoustical shell
Upstairs carpet
Cost of removing hideous light fixtures contractor installed
Electrical system for outside clock
Sound system—including very portable items, such as microphones
Fixtures in upstairs bathrooms
Acoustical improvements to seats
This is a partial list.

None of these are structural changes, yet they were all exempt. The music building was part of the same Prop. X/1A capital project. It's even attached to Barnum Hall.

There is a 10-year precedent for exempting elements that contribute to capital programs. The music lockers should have been exempted.