

For a Listing of Upcoming Board Meetings See Page vi of this Table of Contents
Santa Monica-Malibu Unified School District
Board of Education Meeting
MINUTES

August 23, 2007

A regular meeting of the Santa Monica-Malibu Unified School District Board of Education was held on **Thursday, August 23, 2007**, in the District Administrative Offices: 1651 16th Street, Santa Monica, CA. The Board of Education called the meeting to order at 4:13 p.m. in the Board Conference Room at the District Offices: 1651 16th Street, Santa Monica, CA. At 4:14 p.m., the Board of Education moved to Closed Session regarding the items listed below. The public meeting reconvened at 5:45 p.m. in the Board Room.

I. CALL TO ORDER

- A. Roll Call
- B. Pledge of Allegiance

II. PUBLIC COMMENTS FOR CLOSED SESSION ITEMS ONLY

III. CLOSED SESSION:

- Receipt of recommendation for approval of the proposed settlement cases pursuant to GC §54956.9 (b), as cited in the Brown Act:

DN-1102-06/07	DN-1017-07/08
DN-1002-07/08	<u>DN-1016-07/08</u>
DN-1004-07/08	<u>DN-1018-07/08</u>
DN-1009-07/08	<u>DN-1020-07/08</u>
- Conference with Superintendent regarding 2007-2008 Strategies for Negotiations with S.E.I.U. pursuant to GC §54957.6 as cited in the Brown Act.
- Superintendent’s performance evaluation and 2006-07 Performance Targets pursuant to GC §54954.5 as cited in the Brown Act.
- Public Employee, to consider appointment, employment, performance evaluation, or dismissal of employee pursuant to GC §54957 as cited in the Brown Act (3 cases).

IV. BOARD OF EDUCATION – COMMENDATIONS / RECOGNITIONS

- Education Services Staff for SMART Board Academy & New Teacher Orientation
This item was included in the Superintendent’s Report.

V. APPROVAL OF THE AGENDA

It was moved by Mr. Snell, seconded by Ms. Pye, and voted 6/0 (Dr. Escarce was absent) to approve the agenda.

VI. APPROVAL OF MINUTES

A.01 Approval of Minutes1
 August 9, 2007

VII. CONSENT CALENDAR

Consent agenda items are considered routine, as agreed by the President, Vice President and Superintendent, requiring no discussion, and are normally all approved at one time by the Board of Education. However, members of the Board of Education, staff, or the public may request an item be removed from the consent agenda for clarification and/or discussion. Consideration will occur during Section XI (Major Items).

Curriculum and Instruction

A.02 Approval of Independent Contractors.....2
A.03 Overnight Field Trips: 2007-20083
A.04 Student Teaching Agreement – California State University, Los Angeles4
A.05 Approval of Special Education Contracts – 2007-2008 5-7

Business and Fiscal

A.06 Award of Purchase Orders – 2007-2008..... 8-8d
A.07 Increase of Contract (Legal Fees) for Goodwin Proctor LLP.....9

Personnel

A.08 Certificated Personnel – Elections, Separations 10-18
A.09 Special Service Employees.....19
A.10 Classified Personnel – Merit..... 20-24
A.11 Classified Personnel – Non-Merit.....25

VIII. PUBLIC COMMENTS

Public Comments is the time when members of the audience may address the Board of Education on items not scheduled on the meeting's agenda. All speakers are limited to three (3) minutes. When there are a large number of speakers, the Board may reduce the allotted time to two (2) minutes per speaker. The Brown Act (Government Code) states that Board members may not engage in discussion of issues raised during “VIII, Public Comments” except to ask clarifying questions, make a brief announcement, make a brief report on his or her own activities, or to refer the matter to staff. This Public Comment section is limited to 20 minutes. If the number of persons wishing to address the Board of Education exceeds the time limit, additional time will be provided in Section XVI, CONTINUATION OF PUBLIC COMMENTS.

- *Ms. Norma Perez, Mr. Zaq Moul, and Ms. Antoinette Hayes, from Santa Monica Youth Football, addressed the board regarding fees associated with use of district facilities.*
- *Ms. Lisa Proft, Ms. Grace Phillips, Mr. Peter Kerndt, and Ms. Nancy Cohen, members of the Edison community, addressed the board regarding facilities at Edison Language Academy.*
- *Mr. Bob Karas, a member of the public, addressed the board regarding students attending neighborhood schools.*
 - *The board requested information from staff regarding how many students are turned away from their neighborhood school due to lack of space.*

IX. COMMUNICATIONS

The Communications section provides an opportunity for the Board of Education to hear reports from the individuals or Committee representative listed below. All reports are limited to 5 minutes or less. However, if more time is necessary, or if a report will not be presented, please notify the Board secretary eight workdays prior to the date of the meeting.

A. Student Board Member Reports – No reports

B. SMMCTA Update – Mr. Harry Keiley

Mr. Keiley was pleased to announce that the State of California has adopted its budget, which has considerable implications for education. After attending the New Teacher Academy this week, Mr. Keiley saw what a great job the BTSA program does with helping new teachers transition through their first two years. He said that he would be examining data regarding how the BTSA program has assisted in keeping new teachers in the district.

- C. **S.E.I.U. Update – Ms. Keryl Cartee – No report**
- D. **PTA Council President Report – Rebecca Kennerly – No report**
- E. **Financial Oversight Committee – No report**
- F. **Measure “BB” Advisory Committee – No report**

X. SUPERINTENDENT’S REPORT

Superintendent Talarico began her report with a summary of last week’s districtwide Administrative Retreat. Santa Monica College graciously allowed the retreat to take place at two of their facilities as part of the Memorandum of Understanding between the college and the district. The first day of the retreat involved teambuilding activities with outside facilitators. The administrators said they found the day’s activities and lessons to be fulfilling. The second day involved professional development for the school site Principals. The administrators discussed the theme for this year: “Teamwork.” The Superintendent explained that highly effective teams perform at optimum level only when they collaborate and function as a team. The goals for the 2007-2008 school year include improving districtwide attendance by 1%, improving customer services and communication with parents, improving districtwide math achievement by 5%, increasing technology integration into lesson design and delivery, passing a parcel tax to allow the district to continue to provide high quality level of services. The Superintendent’s Performance Targets for the year including improving math achievement, increasing access to higher education for all students, and establishing a Small Schools Task Force.

As a result of the Administrators’ Retreat, senior staff has provided the administrators with an Administrative Resource Binder that address many of the requests made by the principals. The binder includes department contact information and the general functions of each department, Frequently Asked Questions with answers from each department for the school site staff, a self-assessment form for administrators to assess themselves as 21st Century Administrators, Administrator Performance Targets, an “Every Minute Counts” attendance program (Ms. Laurel Schmidt has provided each school with its attendance rates from last year and strategies to improve enrollment), information regarding the Communications Collaborative, and a Budgeting and Expenditures Information Sheet for each school site. Drs. Chou and Hodgson will be holding workshops for Principals regarding categorical funding and carry-over funds.

Superintendent Talarico announced the new collaborative, the Communications Committee, which is made up of members from the PTA Council, SMCTA, SEIU, Board of Education, and the district office. The goal of the committee is to improve lines of communication throughout the district. The committee has created a theme, slogan, logo, and banners. The Superintendent explained that the district would be taking the initiative to report the wonderful things that occur in our district, ensuring the best things about the district are not forgotten, missed, or unreported.

Ms. Talarico commended Dr. Susan Samarge and Ms. Jessica Rische for the success of this week’s New Teachers Academy. Part of the academy involved the new teachers exploring the district office on a type of scavenger hunt to learn as much information as they could regarding each department. The Superintendent reported that the new teachers seemed excited to join the team. The group of new teachers wrote thank you notes to the staff for providing them with information and making them feel welcome.

This week also saw a SMART Boards Academy at Will Rogers. Ms. Tristen Macon and Ed Services did a wonderful job teaching educators how to make their own websites and use the SMART Boards as an effective educational tool. Ms. Macon has agreed to hold a SMART Board training for the board members.

The Superintendent thanked the senior leadership team for their hard work preparing for the new school year. They have been responding to inquires and assisting in problem-solving as issues arise at the school sites.

When students return on September 5th, the school sites will be more ready than they have ever been in the past. Ms. Talarico explained that cleaning crews are power-washing and deep cleaning each site. Teachers have been very positive about this cleaning campaign.

Ms. Talarico announced that the districtwide Welcome Back Breakfast will be held on August 31st from 7:30 to 9:00am at the Samohi Greek Theatre. Students will be performing musical numbers and district VIPs will be addressing the attendees. Following the breakfast will be a daylong professional development session for the entire teaching staff. The Superintendent said she couldn't wait to see the students on September 5th.

Board President Wisnicki commended the teamwork demonstrated during the process of getting ready for the new school year. She noted the excellent work of the Communications Collaborative, which has achieved a full communications plan for the opening of school in just under a month. She thanked the members of the collaborative, most of whom are volunteers.

Board Member Snell asked if the administrators had provided feedback regarding the retreat. The Superintendent explained that each administrator was provided a reflective journal. Throughout the year, the administrators will be assessing the different types of professional development they will be receiving. Administrators are now much more involved in their own professional development. Ms. Talarico encouraged board members to ask the administrators about the retreat.

Board Member Snell asked if members of the media attended the SMART Board training. Ms. Talarico confirmed that a reporter from the Westside Chronicle attended. Other media sources have requested and received information for their Back-to-School editions.

MAJOR and DISCUSSION Items

As a general rule, items under MAJOR and DISCUSSION will be listed in order of importance as determined by the President, Vice President and Superintendent. Individual Board members may move to request a change in the order prior to consideration of any Major item. The Board may also move any of these items out of order to be heard immediately following PUBLIC COMMENTS if it appears that there is special interest by the public or as a courtesy to staff members making presentations to the Board.

XI. MAJOR ITEMS

These items are considered to be of major interest and/or importance and are presented for **ACTION (A)** or **INFORMATION (I)** at this time. Many have been reviewed by the Board at a previous meeting under the Discussion Items section of the agenda.

7:32 pm

A.12	Establish Small Schools Task Force	26-27
A.13	Assignment of Board of Education Liaison to District Advisory Committee	28
A.14	Administrative Appointment	29

A.15	Appoint Additional Members to the Parcel Tax Renewal Feasibility Committee.....	30
A.16	New Policy 6020 – Parent Involvement	31-36
A.17	Delete Policy 1241 – Parent Involvement	37

XII. DISCUSSION ITEMS

These items are submitted for information (FIRST READING) and discussion. Action will generally be considered at the next regularly scheduled meeting of the Board.

7:58 pm

D.01	Prioritization of Facilities Master Plan Projects for Measure “BB” – SAMOHI and Malibu HS	38-39
D.02	Review Policy 1330 – Use of Facilities and Barnum Hall Facilities Use Agreement.....	40-43n

10:14 pm

D.03	New Policy 4258 – Employee Security	44-48
D.04	New Policy 5141 – Health Care and Emergencies	49-51
D.05	Delete Policies 5141.11, 5141.12, 5141.13, 5141.23	52-56
D.06	Revise Policies 5141.21, 5141.22	57-62
D.07	Revise Policy 6146.11 – Alternative Credits toward Graduation.....	63-67
D.08	New Policy 6171 – Title I Programs.....	68-71

XIII. INFORMATIONAL ITEMS

6:28 pm

I.01	Presentation by Financial Advisor of Proposed Structure of \$60 Million Series “A” Measure “BB” Bond.....	72
I.02	Detail of Staffing Forecast for Three-Month Preliminary Contract for Program Management Services – Parsons 3D/I	73-73c
I.03	Supplemental Textbooks.....	74

XIV. BOARD MEMBER ITEMS

These items are submitted by individual Board members for information or discussion, as per Board Policy 8320(b).

XV. REQUESTS BY MEMBERS OF THE PUBLIC OR DISTRICT ADVISORY COMMITTEES TO ADDRESS THE BOARD OF EDUCATION

These items are submitted by members of the public to address the Board of Education on a matter within the jurisdiction of the Board, as per Board Policy 8320(c). Requests must be submitted to the Superintendent in writing ten days before the Board meeting or prior to agenda planning, in accordance with the established agenda planning schedule, whichever is less. The written request will not exceed 500 words and will include, as an attachment, brief background information and the reason for the request.

XVI. CONTINUATION OF PUBLIC COMMENTS

A continuation of Section VIII, as needed. (If the number of persons wishing to address the Board of Education exceeds the time limit in section VIII, additional time will be provided in Section XVI, CONTINUATION OF PUBLIC COMMENTS.)

XVII. BOARD MEMBER COMMENTS

Board Member Comments is the section where a Board member may make a brief announcement or make a brief report on his or her own activities relative to Board business. There can be no discussion under “BOARD MEMBER COMMENTS.”

XVIII. FUTURE AGENDA ITEMS

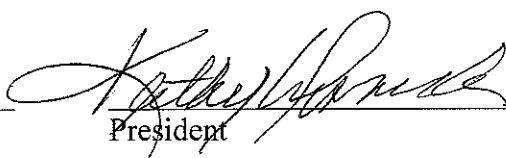

Items for future consideration will be listed with the projected date of consideration. The Board of Education will be given any backup information available at this time.

XIX. CLOSED SESSION

The Board of Education will, if appropriate, adjourn to CLOSED SESSION to complete discussion on items listed for CLOSED SESSION following the regular business meeting.

XX. ADJOURNMENT

It was moved by Mr. Snell, seconded by Mr. de la Torre, and voted 6/0 (Dr. Escarce was absent) to adjourn the meeting at 11:32 p.m. The next regularly scheduled meeting will held on **Thursday, September 6, 2007, at 5:30 p.m.** at the **District Administrative Offices, 1651 16th Street, Santa Monica, CA.**

Approved: 9/6/07 _____

President

Superintendent

**Meetings held at Santa Monica City Hall are broadcast live - City TV2, Cable Channel 16.
Meetings held at the District Office and in Malibu are taped and rebroadcast
in Santa Monica on CityTV2, Cable Channel 20 - Check TV listing.
Meetings are rebroadcast in Malibu on Government Access Ch. 3 every Saturday at 8pm.**

SMMUSD Board of Education Meeting Schedule 2007-2008

Public Meetings begin at 5:30pm

July through December 2007					
Month	1 st Thursday	2 nd Thursday	3 rd Thursday	4 th Thursday	Special Note:
July		7/12 DO	7/19* DO		*Special Meeting
August		8/9 DO		8/23 DO	
September	9/6 DO			9/27 DO	
October	10/4 M		10/18 SM		
November	11/1 M		11/15 SM	11/30 WHERE (5th Thurs)	Thanksgiving 11/22-23
December		12/13 DO		winter break	Usually one mtg. (Three wks in Dec. before winter break)
December 24 – 31: Winter Break					
January through June 2008					
January 1 – 4: Winter Break					
January	winter break		1/17 DO	1/31 WHERE (5th Thurs)	
February	2/7 M		2/21 SM		
March		3/13 DO	spring break	spring break	Stairway 3/6 & 3/7
March 17 – 28: Spring Break					
April	4/3 DO		4/17 SM		
May	5/1 M		5/15 SM	5/29 WHERE (5th Thurs)	
June	6/5 DO			6/26 DO	Last day of school 6/20

District Office (DO): 1651 16th Street, Santa Monica.
 Malibu City Council Chambers (M): 23815 Stuart Ranch Road, Malibu, CA
 Santa Monica City Council Chambers (SM): 1685 Main Street, Santa Monica.

**Santa Monica-Malibu Unified School District
Board of Education
August 23, 2007**

I CALL TO ORDER

4:13pm

**Moved to Closed Session: 4:14pm
Reconvened Public Meeting: 5:45pm**

A Roll Call

Kathy Wisnicki – President
Oscar de la Torre – Vice-President

Jose Escarce – *excused absence*
Maria Leon-Vazquez
Ralph Mechur
Kelly Pye
Barry Snell

Student Board Members

Due to the end of the school year, no Student Board Members were present.

B Pledge of Allegiance

Led by Mr. Ralph Mechur.

II CLOSED SESSION

President Wisnicki reported out of Closed Session: moved by Ms. Leon-Vazquez, seconded by Mr. de la Torre, and voted 6/0 (Dr. Jose Escarce was absent) to approve the following settlement cases pursuant to GC Section 54954.9 (b), as cited in the Brown Act:

<i>DN-1102-06/07</i>	<i>DN-1017-07/08</i>
<i>DN-1002-07/08</i>	<i>DN-1016-07/08</i>
<i>DN-1004-07/08</i>	<i>DN-1018-07/08</i>
<i>DN-1009-07/08</i>	<i>DN-1020-07/08</i>

The total district commitment toward these settlements is \$165,455.

Moved by Mr. de la Torre, seconded by Ms. Leon-Vazquez, and voted 6/0 (Dr. Jose Escarce was absent) the board took action to re-characterize the employment of Employee #6782 as a limited-term appointment to the position of Director, Facility Management, and to amend the employment contract consistent with the requirements of Education Code Section 45287.

TO: BOARD OF EDUCATION
FROM: DIANNE TALARICO
RE: APPROVAL OF MINUTES

ACTION
08/23/07

RECOMMENDATION NO. A.01

It is recommended that the Board of Education approve the following Minutes:

August 09, 2007

MOTION MADE BY: Ms. Leon-Vazquez
SECONDED BY: Mr. de la Torre
STUDENT ADVISORY VOTE: N/A
AYES: All (6) (Dr. Escarce was absent)
NOES: None (0)

CONSENT ITEMS

TO: BOARD OF EDUCATION

ACTION/CONSENT

08/23/07

FROM: DIANNE TALARICO / TIMOTHY R. WALKER /
MAUREEN BRADFORD

UPDATE

RE: APPROVAL OF INDEPENDENT CONTRACTORS

RECOMMENDATION NO. A.02

It is recommended that the Board of Education enter into an agreement with the following Independent Contractors. These contracts are included in the 2007/2008 budget.

Contractor/ Contract Dates	Description	Site	Funding
Early Advantage 8/31/07 Not to exceed: \$2500	Teacher training services in preparation for Kindergarten classroom teachers implementing new Spanish / Mandarin curriculum.	Ed Services	01-90250-0-11100-10000-5802-030-1300 Rotary Funds
<u>Foundation for CSU San Bernardino RIMS California Arts Project</u> <u>8/31/2007</u> <u>Not to exceed: \$1200</u>	<u>To provide professional development sessions to dance, music, theatre, and visual arts teachers on assessment and create different models of assessments for the four art disciplines during the district-wide staff development day</u>	<u>Ed Services</u>	<u>01-91251-0-17100-10000-5802-030-1300</u> <u>Los Angeles County Arts Commission</u>

MOTION MADE BY: Mr. Snell

SECONDED BY: Ms. Pye

STUDENT ADVISORY VOTE: N/A

AYES: All (6) (Dr. Escarce was absent)

NOES: None (0)

TO: BOARD OF EDUCATION

ACTION/CONSENT

08/23/07

FROM: DIANNE TALARICO / CHIUNG-SALLY CHOU / MAUREEN BRADFORD

RE: OVERNIGHT FIRD TRIP(S) 2007-2008

RECOMMENDATION NO. A.03

It is recommended that the Board of Education approve the special field trip(s) listed below for students for the 2007-2008 school year. No child will be denied due to financial hardship.

School Grade # students	Destination Dates of Trip	Principal/Teacher	Cost Funding Source	Subject	Purpose Of Field Trip
Samohi 9-12 100	Salzburg, Prague, Vienna – Austria & Czech Republic 3/16/08 to 3/27/08	Joni Swenson	\$2800 per student paid for by parents and fund raising	Music	To engage in a cultural exchange and perform at exceptional venues throughout this region.

MOTION MADE BY: Mr. Snell

SECONDED BY: Ms. Pye

STUDENT ADVISORY VOTE: N/A

AYES: All (6) (Dr. Escarce was absent)

NOES: None (0)

TO: BOARD OF EDUCATION

ACTION/CONSENT

08/23/07

FROM: DIANNE TALARICO / MICHAEL MATTHEWS

RE: STUDENT TEACHING AGREEMENT - CALIFORNIA STATE
UNIVERSITY, LOS ANGELES

RECOMMENDATION NO. A.04

It is recommended that the Board of Education enter into a Student Teaching Agreement between California State University, Los Angeles and the Santa Monica-Malibu Unified School District.

INSTITUTION: California State University, Los Angeles
EFFECTIVE: July 1, 2007, through June 30, 2008
PAYMENT: The University shall pay the District \$16.67 per quarter unit, not to exceed a total payment of \$1,667.00. The services to be provided by the District shall not exceed 100-quarter units.

COMMENT: The district participates with university teacher training institutions in providing classroom-teaching situations under the supervision of a master teacher.

MOTION MADE BY: Mr. Snell
SECONDED BY: Ms. Pye
STUDENT ADVISORY VOTE: N/A
AYES: All (6) (Dr. Escarce was absent)
NOES: None (0)

TO: BOARD OF EDUCATION

ACTION/MAJOR

08/23/07

FROM: DIANNE TALARICO / TIMOTHY R. WALKER / RUTH VALADEZ

RE: APPROVAL OF SPECIAL EDUCATION CONTRACTS - 2007-2008

RECOMMENDATION NO. A.05

It is recommended that the Board of Education approve the following Special Education Contracts for fiscal year 2007-2008 as follows:

NPS/NPA

2007-2008 Budget 01-65000-0-57500-11800-5825-043-1400

Nonpublic School/Agency	Student DOB	Service Description	Contract Number	Cost Not to Exceed
Stepping Stone - rate increase	7/28/02	Behavior Therapy	#13 - UC08040	\$ 3,320
Julia Hobbs Speech Pathology	12/26/98	Speech Therapy	#25 -	\$ 5,460
Can Do Kids	10/21/98	Physical Therapy	#26 -	\$ 5,130
Can Do Kids	3/29/98	Physical Therapy	#27 -	\$ 5,130
Kayne-Eras	9/1/90	NPS	#28 -	\$ 5,331

Amount Budgeted NPS/NPA 07/08	\$ 3,000,000
Prior Board Authorization as of 8/09/07	\$ 1,942,364
Balance	\$ 1,057,636
Positive Adjustment (See Below)	\$ 29,452
Total Amount for these Contracts	\$ 24,371
Balance	\$ 1,062,717

Adjustment					
Instructional Consultant Budget 01-65000-0-57500-11800-5825-043-1400					
There has been a reduction in authorized expenditures of NPS/NPA contracts for FY 200708 in the amount of \$ 29,452 as of 8/23/07					
Instructional Consultant	Service Description	Contract Number	Reduce (R) Eliminate (E)	Adjusted Amount	Comment
Jennifer Keany & Associates	Behavior Therapy	#11 - UC08038	R	\$ 29,452	

Instructional Consultants
 2006-2007 Budget 01-65000-0-57500-11900-5802-043-1400

Instructional Consultant	Student DOB	Service Description	Contract Number	Cost Not to Exceed
Tejal Shah - D.O.B. correction	9/5/03	Physical Therapy	#19 - UC08061	\$ 0

Amount Budgeted Instructional Consultants 07/08	\$ 350,000
Prior Board Authorization as of 8/09/07	\$ 330,372
Balance	\$ 19,628
Positive Adjustment (See Below)	\$ 9,080
	\$
Total Amount for these Contracts	\$ 0
Balance	\$ 28,708

Adjustment					
Instructional Consultant Budget 01-65000-0-57500-11900-5802-043-1400					
There has been a reduction in authorized expenditures of Instructional Consultants contracts for FY 200708 in the amount of \$ 0 as of 8/23/07					
Instructional Consultant	Service Description	Contract Number	Reduce (R) Eliminate (E)	Adjusted Amount	Comment
Larry Sulham	Physical Therapy	#23 - UC08071	E	\$ 720	
Steve Kofler	Physical Therapy	#38 - UC08086	R	\$ 8,360	

Non-Instructional Consultants
 2007-2008 Budget 01-65000-0-57500-11900-5890-043-1400

Non-Instructional Consultant	Student DOB	Service Description	Contract Number	Cost Not to Exceed
Parent Reimbursement	6/19/90	Travel to NPS	#3	\$ 425

Amount Budgeted Non-Instructional Consultants 07/08	\$ 225,000
Prior Board Authorization as of 08/09/07	\$ 41,220
Balance	\$ 183,780
Total Amount for these Contracts	\$ 425
Balance	\$ 183,355

Legal Contractor	Service Description	Contract Number	Cost Not to Exceed

Amount Budgeted Non-Instructional Consultants 07/08	\$ 180,000
Prior Board Authorization as of 8/09/07	\$ 180,000
Balance	<u>\$ 0</u>
Total Amount for these Contracts	\$ 0
Balance	<u>\$ 0</u>

COMMENT: According to the Education Code SEC.21 Section 56342, prior to recommending a new or continued placement in a non-public, non-sectarian school, the Individualized Education Program (IEP) Team must submit the proposed recommendation to the local governing board for its review and recommendation regarding the cost of such placement.

The recommendation for these severely handicapped students are made by the District IEP Teams in accordance with State and Federal laws. The mandates of IDEA require non-public school services be provided at no expense to parents if there is not an appropriate public school program available. Funding to come from a SELPA-wide non-public school/non-public agency reserve account.

MOTION MADE BY: Mr. Snell
 SECONDED BY: Ms. Pye
 STUDENT ADVISORY VOTE: N/A
 AYES: All (6) (Dr. Escarce was absent)
 NOES: None (0)

TO: BOARD OF EDUCATION

ACTION/CONSENT

08/23/07

FROM: DIANNE TALARICO / STEPHEN R. HODGSON /
VIRGINIA I. HYATT

RE: AWARD OF PURCHASE ORDERS - 2007-2008

RECOMMENDATION NO. A.06

It is recommended that the Board of Education approve the following Purchase Orders and Changed Purchase Orders from July 31, 2007, through August 15, 2007, for fiscal /08.

MOTION MADE BY: Mr. Snell

SECONDED BY: Ms. Pye

STUDENT ADVISORY VOTE: N/A

AYES: All (6) (Dr. Escarce was absent)

NOES: None (0)

SANTA MONICA-MALIBU UNIFIED SCHOOL DISTRICT
PURCHASE ORDERS TO BE APPROVED AT THE BOARD MEETING OF AUGUST 23, 2007

U-GENERAL FUND, UNRESTRICTED R-GENERAL FUND, RESTRICTED A-ADULT ED CD-CHILD DEVELOPMENT F-CAFETERIA
SF-SPECIAL FINANCING (FLEX) EX-PROP ES and X D-DEVELOPER FEES SR-SPECIAL RESERVE CAPITAL
DF-DEFERRED MAINTENANCE SM-STATE MODERNIZATION

PO NO.	VENDOR	DESCRIPTION	LOCATION	AMOUNT	
<u>*** NEW PURCHASE ORDERS ***</u>					
811272	ACADEMIC SUPERSTORE	INSTRUCTIONAL SUPPLIES	R O P	7,306.82	R
811417	ACADEMIC SUPERSTORE	computer supply	OLYMPIC CONTINUATION SCHOOL	31.34	U
811432	ACCREDITING COMMISSION	WASC ACCREDITION FEES 07-08	MALIBU HIGH SCHOOL	650.00	U
811356	ACHIEVE DATA SOLUTIONS LLC	data director license	CURRICULUM AND IMC	34,541.90	U
811358	AFFINITY BAG CO INC	Professional Dvlpmnt supplies	CURRICULUM AND IMC	250.00	R
811396	AFFINITY BAG CO INC	PROF DEVLPMNT SUPPLIES	CURRICULUM AND IMC	345.35	R
811299	ALLAN'S AQUARIUM	OPEN ORDER/SCIENCE PROJECTS	CHILD DEVELOPMENT CENTER	800.00	CD
811393	AMECI PIZZA & PASTA	Open PO for Ameci Pizza & Past	CURRICULUM AND IMC	200.00	R
811430	AMECI PIZZA & PASTA	PIZZA FOR HIGH SCHOOL	FOOD SERVICES	10,000.00	F
811332	ANGSTROM STAGE LIGHTING INC	LIGHTING REPAIRS	BUSINESS SERVICES	3,400.00	R
811387	ANIMAL PEST MANAGEMENT	GROUNDS CONTRACT PEST CONTROL	GROUNDS MAINTENANCE	3,240.00	R
811413	ANIXTER BROS INC	Open Supplies	INFORMATION SERVICES	500.00	U
811113	APPLE COMPUTER CORP	XRACK	MALIBU HIGH SCHOOL	541.20	R
811435	APPLE COMPUTER CORP	HARD DRIVE	MALIBU HIGH SCHOOL	268.10	R
811304	ARCH WIRELESS	PAGERS FOR STOCK DEL. CLERKS	FOOD SERVICES	176.88	F
811345	ARCH WIRELESS	PAGER SERVICE/RENTAL	FACILITY MAINTENANCE	21.58	U
811412	ARCH WIRELESS	PAGER RENTAL SERVICE	CHILD DEVELOPMENT CENTER	11.58	CD
811464	ARCH WIRELESS	Pager Service	SPECIAL EDUCATION REGULAR YEAR	299.50	R
811327	ART MEETS TECHNOLOGY	WEB SITE DESIGN	BUSINESS SERVICES	2,000.00	R
811361	ASCIP	LIABILITY INSURANCE	INSURANCE SERVICES	942,857.00	U
811402	BAKER COMMODITIES INC.	MAINT PLUMBING CONTRACT	FACILITY MAINTENANCE	900.00	R
811335	BARNES & NOBLE/SANTA MONICA	SUMMER READING BOOKS 4 RESALE	SAMOHI STUDENT STORE	3,035.20	U
811421	BARNES & NOBLE/SANTA MONICA	TEXTBOOKS	MALIBU HIGH SCHOOL	3,462.43	R
811339	BATTERIES PLUS	Open Batteries	INFORMATION SERVICES	500.00	U
811308	BEREZOWSKY, LISA B	Summer School Reimbursement	SPECIAL EDUCATION REGULAR YEAR	75.00	R
811320	BEST BUY	CAMERAS	CHILD DEVELOPMENT CENTER	693.98	CD
811321	BROTMAN, MARY	Summer School Reimbursement	SPECIAL EDUCATION REGULAR YEAR	75.00	R
811190	BUSINESS PRINTING AND IMAGING	PRINT BUSINESS CARDS	BOE/SUPERINTENDENT	32.15	U
811221	BUSINESS PRINTING AND IMAGING	PRINT BUSINESS CARDS	FACILITY MAINTENANCE	152.43	R
811350	BUSINESS PRINTING AND IMAGING	BUSINESS CARDS	FOOD SERVICES	32.15	F
811406	BUSINESS PRINTING AND IMAGING	PRINT BUSINESS CARDS	BOE/SUPERINTENDENT	32.15	U
811407	BUSINESS PRINTING AND IMAGING	PRINT BUSINESS CARDS	BOE/SUPERINTENDENT	32.15	U
811431	BUSINESS PRINTING AND IMAGING	BUSINESS CARDS	MALIBU HIGH SCHOOL	63.69	U
811466	BUSINESS PRINTING AND IMAGING	PRINT BUSINESS CARDS	ROOSEVELT ELEMENTARY SCHOOL	63.69	U
811343	CALIFORNIA PRODUCE WHOLESALERS	PRODUCE FOR SUMMER SCHOOL PROG	FOOD SERVICES	3,961.40	F
811410	CANON BUSINESS SOLUTIONS-WEST	MAINTENANCE AGREEMENT	TRANSPORTATION	277.80	R
811479	CASTLENET COMPUTING	NETWORK EQUIP/MAINT & SUPPORT	INFORMATION SERVICES	5,000.00	U
811378	CIRONE FARMS	PRODUCE FOR FARMERS' MRKT SBP	FOOD SERVICES	5,000.00	F
811280	CITY OF SANTA MONICA-ACCTG OFF	HMRRP/CUPA-CITY OF SANTAMONICA	FACILITY MAINTENANCE	3,058.00	U
811336	COCA COLA BOTTLING	OPEN ORDER FOR RESALE DRINKS	SAMOHI STUDENT STORE	2,500.00	U
811324	COHN, JEFFREY	Mileage Reimbursement	SPECIAL EDUCATION REGULAR YEAR	2,000.00	R
811224	CONTINENTAL BUSINESS MACHINES	SERVICE ON SHREDDER	STUDENT SERVICES	425.89	U
811322	COPELAND, BARBARA	Mileage Reimbursement	SPECIAL EDUCATION REGULAR YEAR	550.00	R
811313	CORPORATE EXPRESS	OFFICE SUPPLIES	PURCHASING/WAREHOUSE	400.00	U
811317	CORPORATE EXPRESS	RECEPTION AREA MAIL BOXES	BUSINESS SERVICES	3,095.95	R
811318	CORPORATE EXPRESS	RECEPTION AREA FURNITURE	BUSINESS SERVICES	3,020.18	R
811319	CORPORATE EXPRESS	RECEPTION DESK FURNITURE	BUSINESS SERVICES	6,262.41	R
811267	CORPORATE EXPRESS/US OFFICE	POWER STRIPS/SURGE SUPPRESSORS	R O P	452.64	R

SANTA MONICA-MALIBU UNIFIED SCHOOL DISTRICT
PURCHASE ORDERS TO BE APPROVED AT THE BOARD MEETING OF AUGUST 23, 2007

U-GENERAL FUND, UNRESTRICTED R-GENERAL FUND, RESTRICTED A-ADULT ED CD-CHILD DEVELOPMENT F-CAFETERIA
SF-SPECIAL FINANCING (FLEX) EX-PROP ES and X D-DEVELOPER FEES SR-SPECIAL RESERVE CAPITAL
DF-DEFERRED MAINTENANCE SM-STATE MODERNIZATION

PO NO.	VENDOR	DESCRIPTION	LOCATION	AMOUNT	
811441	CORPORATE EXPRESS/US OFFICE	OPEN ORDER	MALIBU HIGH SCHOOL	2,500.00	U
811442	CORPORATE EXPRESS/US OFFICE	OFFICE FURNITURE/SUPPLIES	MALIBU HIGH SCHOOL	508.36	U
811458	CRUCIAL TECHNOLOGY	Memory	INFORMATION SERVICES	106.58	U
811471	DICK BLICK	ART SUPPLIES	SANTA MONICA HIGH SCHOOL	666.25	R
811351	DON KOTT FORD	Repair to bus #16	TRANSPORTATION	829.41	R
811455	DON LEE FARMS/GOODMAN FOODS	PANCAKE ON A STICK	FOOD SERVICES	31.60	F
811283	DURAY/JF DUNCAN INDUSTRIES	DOUBLE CONVECTION OVEN/ADAMS	FOOD SERVICES	8,418.75	F
811284	DURAY/JF DUNCAN INDUSTRIES	SINGLE CONVECTION OVEN/LINCOLN	FOOD SERVICES	4,630.00	F
811399	DURAY/JF DUNCAN INDUSTRIES	2-DOOR REACH IN FREEZER/CABR.	FOOD SERVICES	2,933.31	F
811453	DURHAM TRANSPORTATION	ATHLETIC TRANSPORTATION	MALIBU HIGH SCHOOL	4,500.00	R
811315	EARLY ADVANTAGE LLC	SOFTWARE	CURRICULUM AND IMC	10,166.30	R
811348	EASY WAY SAFETY SERVICES	EZ ADJ. VESTS - SPECIAL ED.	TRANSPORTATION	304.45	R
811385	ECKHART'S TRAILER HITCH &	OPEN ORDER GROUNDS VEHICLE	GROUNDS MAINTENANCE	500.00	R
811434	EDSOURCE	RENEWAL EDSOURCE	MALIBU HIGH SCHOOL	75.00	U
811392	EL POLLO LOCO	PO for El Pollo Loco	CURRICULUM AND IMC	140.00	R
811424	EVERBIND/MARCO BOOK CO	ENGLISH TEXTBOOKS	MALIBU HIGH SCHOOL	4,167.37	R
811282	FOLLETT EDUCATIONAL SERVICES	INSTRUCTIONAL MATERIALS	OLYMPIC CONTINUATION SCHOOL	142.11	R
811422	FOLLETT EDUCATIONAL SERVICES	HISTORY TEXTBOOKS	MALIBU HIGH SCHOOL	3,871.02	R
811309	FRAGOSO, DANIELLE	Summer School Reimbursement	SPECIAL EDUCATION REGULAR YEAR	75.00	R
811311	FREEDMAN, MAROLYN	REIMBURSEMENT - COOL TOOLS	HEALTH SERVICES	19.78	R
810170	GALE SUPPLY CO	CUSTODIAL SUPPLIES	LINCOLN MIDDLE SCHOOL	3,144.67	U
810473	GALE SUPPLY CO	CUSTODIAL SUPPLIES	ROOSEVELT ELEMENTARY SCHOOL	1,611.20	U
811443	GANDER EDUCATION PUBLISHING	READING MATERIALS/BOOKS	MALIBU HIGH SCHOOL	2,144.36	R
811256	GATEWAY 2000 MAJOR ACCOUNTS	Desktop Computers	ROOSEVELT ELEMENTARY SCHOOL	3,674.79	R
811268	GATEWAY 2000 MAJOR ACCOUNTS	LAPTOP COMPUTER/LARRY SCOTT	FACILITY MAINTENANCE	1,643.87	R
811274	GATEWAY 2000 MAJOR ACCOUNTS	LAPTOPS FOR SAMOHI	FOOD SERVICES	3,578.75	F
811297	GATEWAY 2000 MAJOR ACCOUNTS	COMPUTER	CHILD DEVELOPMENT CENTER	1,164.50	CD
811459	GLENCOE/MACMILLAN/MCGRAW-HILL	SOCIAL STUDIES TEXTBOOKS	SANTA MONICA HIGH SCHOOL	15,564.77	R
811289	GOLDEN WEST DISTRIBUTING	FROZEN YOGURT	FOOD SERVICES	990.00	F
811269	GONZALEZ, GABRIELA	Summer School Reimbursement	SPECIAL EDUCATION REGULAR YEAR	75.00	R
811476	GRAVIC PRINCIPIA DIVISION OF	REMARK SUPPORT AGREEMENT RENEWAL	CURRICULUM AND IMC	167.79	U
811444	HAMPTON-BROWN BOOKS	ELD BOOKS	MALIBU HIGH SCHOOL	85.26	R
811337	HARALAMBOS BEVERAGE COMPANY	OPEN ORDER FOR RESALE DRINKS	SAMOHI STUDENT STORE	2,500.00	U
811044	HARCOURT ASSESSMENT INC	Speech Path Materials	HEALTH SERVICES	2,743.40	R
811215	HOME DEPOT- L.A.	OPEN ORDER/SCIENCE PROJECTS	CHILD DEVELOPMENT CENTER	500.00	CD
811325	HOME DEPOT- L.A.	NON-INSTRUCTIONAL MATERIALS	CHILD DEVELOPMENT CENTER	1,000.00	CD
811330	HOME DEPOT- L.A.	OPEN ORDER SUPPLIES	BUSINESS SERVICES	1,600.00	R
811480	INNOVATIVE LEARNING CONCEPTS	TOUCH MATH MATERIALS	SPECIAL EDUCATION REGULAR YEAR	744.98	R
811279	JOHN DEERE COMPANY	WIDE AREA COMMERCIAL MOWER	BUSINESS SERVICES	44,734.31	R
811423	JOHN WILEY & SONS INC	AP PHYSICS	MALIBU HIGH SCHOOL	3,292.06	R
811307	KLEIS, HEIDI	Summer School Reimbursement	SPECIAL EDUCATION REGULAR YEAR	75.00	R
811312	LACOE:ACCOUNTS RECEIVABLE UNIT	AFDC/DIRECT CERT CONTRACT	FOOD SERVICES	1,003.00	F
811286	LAKESHORE CURRICULUM	Open PO for Supplies	SPECIAL EDUCATION REGULAR YEAR	1,500.00	R
811291	LAKESHORE CURRICULUM	INSTRUCTIONAL	CHILD DEVELOPMENT CENTER	1,088.78	CD
811328	LAKESHORE CURRICULUM	Classroom Materials	SPECIAL EDUCATION REGULAR YEAR	6,270.55	R
811188	LIGHTSPEED TECHNOLOGIES INC.	AUDIO EQUIPMENT	ROOSEVELT ELEMENTARY SCHOOL	10,142.42	R
811045	LINGUI SYSTEMS INC	Speech Path Materials	HEALTH SERVICES	1,595.97	R
811362	MAC SOLUTIONS	Open Repair/Supplies	INFORMATION SERVICES	2,000.00	U
811306	MANNING, MARLYNN	Summer School Reimbursement	SPECIAL EDUCATION REGULAR YEAR	75.00	R
811338	MARC POPCORN CO INC	OPEN ORDER FOR POPCORN	SAMOHI STUDENT STORE	1,250.00	U
811456	MATTHEWS, MIKE	REIMBURSEMENT	EMPLOYEE RELATIONS	300.00	U

SANTA MONICA-MALIBU UNIFIED SCHOOL DISTRICT
PURCHASE ORDERS TO BE APPROVED AT THE BOARD MEETING OF AUGUST 23, 2007

U-GENERAL FUND, UNRESTRICTED R-GENERAL FUND, RESTRICTED A-ADULT ED CD-CHILD DEVELOPMENT F-CAFETERIA
SF-SPECIAL FINANCING (FLEX) EX-PROP ES and X D-DEVELOPER FEES SR-SPECIAL RESERVE CAPITAL
DF-DEFERRED MAINTENANCE SM-STATE MODERNIZATION

PO NO.	VENDOR	DESCRIPTION	LOCATION	AMOUNT	
811344	NEXTEL COMMUNICATIONS	CELL/RADIOPHONES-REPL	FACILITY MAINTENANCE	162.32	U
811275	NICK RAIL MUSIC	MUSIC SUPPLIES/ACCESSORIES	CURRICULUM AND IMC	1,082.50	R
811270	OFFICE MAX	COPIER PAPER	PRINTING SERVICES	5,000.00	U
811446	OFFICE MAX	OPEN ORDER FOR COPIER PAPER	MALIBU HIGH SCHOOL	3,400.00	R
811342	OTIS SPUNKMEYER INC	OPEN ORDER FOR COOKIES	SAMOHI STUDENT STORE	2,000.00	U
811340	PATCH USA	SPIRIT HATS FOR RESALE	SAMOHI STUDENT STORE	151.00	U
811403	PATTON STEEL SUPPLY	OPEN ORDER WELDING SUPPLIES	FACILITY MAINTENANCE	200.00	R
811347	PATTONS PHARMACY	EPIPENS-SCHOOL SITE NURSES	HEALTH SERVICES	1,976.54	R
811046	PEARSON EDUCATION	Speech Path Materials	HEALTH SERVICES	6,059.13	R
811287	PEARSON EDUCATION #3	TEXTBOOKS	ADULT EDUCATION CENTER	7,705.24	A
811288	PEARSON EDUCATION #3	TEXTBOOKS	ADULT EDUCATION CENTER	3,554.77	A
811353	PEARSON EDUCATION #3	INSTRUCTIONAL MATERIALS	R O P	3,251.88	R
811457	PEARSON EDUCATION #1	MATHEMATIC DEPARTMENT	SANTA MONICA HIGH SCHOOL	9,988.58	R
811436	PERFECT COPY PRODUCTS INC	IISS COPIER PICK UP FEE	CURRICULUM AND IMC	108.25	R
811427	PERMABOUND BOOKS	ENGLISH BOOKS	MALIBU HIGH SCHOOL	1,365.36	R
811294	PLAY WITH A PURPOSE	INSTRUCTIONAL	CHILD DEVELOPMENT CENTER	2,003.27	CD
811447	POSTMASTER-MALIBU	POSTAGE STAMPS	MALIBU HIGH SCHOOL	615.00	U
811448	POSTMASTER-MALIBU	OPEN ORDER FOR BULK MAIL	MALIBU HIGH SCHOOL	1,700.00	U
811420	PRENTICE HALL	AP TEXTBOOKS	MALIBU HIGH SCHOOL	5,143.74	R
811445	PRENTICE HALL	AP TEXTBOOKS	MALIBU HIGH SCHOOL	2,891.69	R
811341	PROFESSIONAL UNIFORMS INC	APRONS FOR CAFETERIA STAFF	FOOD SERVICES	784.53	F
811411	PUTTING EDGE	FIELD TRIP/PUTTING EDGE	CHILD DEVELOPMENT CENTER	70.27	CD
811316	QSS	Pre-Id Training	INFORMATION SERVICES	3,000.00	U
811302	RALPH'S	inservice supplies	CURRICULUM AND IMC	216.50	R
811364	RALPH'S	PROF DVLPMNT SUPPLIES	CURRICULUM AND IMC	700.00	R
811463	RALPH'S	OPEN ORDER/REFRESHMENTS	CURRICULUM AND IMC	300.00	U
811323	REIDMILLER, JILL	Mileage Reimbursement	SPECIAL EDUCATION REGULAR YEAR	300.00	R
811066	RICOH BUSINESS SOLUTIONS	COPIER SUPPLIES.	GRANT ELEMENTARY SCHOOL	227.33	R
811261	RICOH U.S.	COPIER MAINTENANCE	SANTA MONICA HIGH SCHOOL	12,960.00	U
811363	S A CONSULTING INC	Printer Ribbons	INFORMATION SERVICES	1,335.78	U
811389	SANTA MONICA MUN BUS LINES	BUS TOKENS	CHILD DEVELOPMENT CENTER	150.00	CD
811454	SANTA MONICA MUN BUS LINES	ATHLETIC TRANSPORTATION	MALIBU HIGH SCHOOL	2,500.00	R
811439	SCHOLASTIC MAGAZINES	SUBSCRIPTION RENEWAL	MALIBU HIGH SCHOOL	470.29	R
811333	SCHOOL SPECIALTY INC	Classroom Materials	SPECIAL EDUCATION REGULAR YEAR	2,350.76	R
811296	SEHI COMPUTER PRODUCTS	PRINTER/PHOTOSMART	CHILD DEVELOPMENT CENTER	204.23	CD
811401	SEHI COMPUTER PRODUCTS	FAX MACHINE TONER CARTRIDGE	FISCAL SERVICES	96.34	U
811429	SEHI COMPUTER PRODUCTS	PRINTER	BUSINESS SERVICES	605.17	EX
811300	SIR SPEEDY PRINTING #0245	printing	CURRICULUM AND IMC	324.75	R
811305	SIR SPEEDY PRINTING #0245	Transportation Forms	SPECIAL EDUCATION REGULAR YEAR	237.32	R
811449	SOCIAL STUDIES SCHOOL SVCS	INVOICE	MALIBU HIGH SCHOOL	119.13	R
811472	SOUTHWEST SCHOOL SUPPLY	ART SUPPLIES	SANTA MONICA HIGH SCHOOL	1,458.84	R
811276	SOUTHWEST STRINGS	MUSIC SUPPLIES/ACCESSORIES	CURRICULUM AND IMC	973.17	R
811329	STAGE & SCREEN PRODUCTIONS LLC	SPECIAL EVENT SERVICES	BUSINESS SERVICES	2,200.00	R
811292	STAPLES BUSINESS ADVANTAGE	SUPPLIES/MUSIC PROGRAM	STATE AND FEDERAL PROJECTS	1,082.50	R
811303	STAPLES BUSINESS ADVANTAGE	inservice supplies	CURRICULUM AND IMC	1,082.50	U
811346	STAPLES DIRECT	CALCULATOR	FISCAL SERVICES	90.92	U
811474	STAPLES/P-U/SANTA MONICA/WILSH	OPEN ORDER/OFFICE SUPPLIES	JOHN MUIR ELEMENTARY SCHOOL	800.00	R
811298	STAPLES/P-U/VENICE/LINCOLN BL	OPEN ORDER/OFFICE SUPPLIES	CHILD DEVELOPMENT CENTER	1,000.00	CD
811331	STAPLES/P-U/VENICE/LINCOLN BL	SUPPLIES	BUSINESS SERVICES	1,600.00	R
811419	STAPLES/P-U/VENICE/LINCOLN BL	OPEN ORDER FOR OFFICE SUPPLIES	BUSINESS SERVICES	400.53	U
811047	SUPER DUPER PUBLICATIONS	Speech Path Materials	HEALTH SERVICES	2,906.59	R

PURCHASE ORDERS TO BE APPROVED AT THE BOARD MEETING OF AUGUST 23, 2007

U-GENERAL FUND, UNRESTRICTED R-GENERAL FUND, RESTRICTED A-ADULT ED CD-CHILD DEVELOPMENT F-CAFETERIA
 SF-SPECIAL FINANCING (FLEX) EX-PROP ES and X D-DEVELOPER FEES SR-SPECIAL RESERVE CAPITAL
 DF-DEFERRED MAINTENANCE SM-STATE MODERNIZATION

PO NO.	VENDOR	DESCRIPTION	LOCATION	AMOUNT	
811388	TARGET STORES	OPEN ORDER/INSTRUCTIONAL ITEMS	CHILD DEVELOPMENT CENTER	130.00	CD
811140	TEXTBOOK WAREHOUSE INC.	FACEPLATES TEXTBOOK DEPARTMENT	SANTA MONICA HIGH SCHOOL	433.00	R
811452	TUMBLEWEED EDUCATIONAL	OPEN ORDER ATHLETICS	MALIBU HIGH SCHOOL	3,500.00	R
811285	U.S. POSTAL SERVICE	METER POSTAGE	PURCHASING/WAREHOUSE	10,000.00	U
811314	UCLA MARCHING BAND	MUSIC INSTRUMENTS	SANTA MONICA HIGH SCHOOL	12,600.00	R
811465	VAN COTT, JAMES	MILEAGE REIMBURSEMENT	SPECIAL EDUCATION REGULAR YEAR	800.00	R
811394	VECTOR RESOURCES INC	Maintenance	INFORMATION SERVICES	17,500.00	U
811352	VIRCO MFG CORP	CLASSROOM FURNITURE	R O P	1,737.90	R
811390	VONS STORE #2262	INSERVICE SUPPLIES	STATE AND FEDERAL PROJECTS	500.00	R
811391	VONS STORE #2262	Open PO for Vons	CURRICULUM AND IMC	60.00	R
811084	WAHRENBROCK, SARAH	GENERAL SUPPLIES/MATERIALS	BOE/SUPERINTENDENT	200.00	U
811428	WEST GROUP/THOMSON WEST	LAW BULLETIN	MALIBU HIGH SCHOOL	181.86	U
811451	WESTLAKE VILLAGE COSTCO #117	OPEN ORDER FOR PHOTO	MALIBU HIGH SCHOOL	750.00	R
811426	WM H SADLIER INC	ENGLISH TEXTBOOKS	MALIBU HIGH SCHOOL	1,820.84	R
				** NEW PURCHASE ORDERS TOTAL:	1,363,366.82

TO: BOARD OF EDUCATION

ACTION/CONSENT

08/23/07

FROM: DIANNE TALARICO / STEPHEN R. HODGSON

RE: INCREASE OF CONTRACT (LEGAL FEES) FOR GOODWIN PROCTER
LLP

RECOMMENDATION NO. A.07

It is recommended that the Board of Education approve a contract for Goodwin Procter LLP for general legal services in a not-to-exceed amount of \$100,000.

Funding Information:

Currently Budgeted: Yes

Funding Source: Fund 01 - General Fund-Unrestricted

Account Number: 01-00000-0-00000-73000-5820-050-1500

Description: Other Genl. Admin./Legal Fees/Business Serv.

COMMENT: Dean Pappas, Esq., has provided general legal services for the past several years and is currently with the law firm of Goodwin Procter LLP. On April 19, 2007, the Board approved item A.11, *Approval of Contract (Legal Fees) for Goodwin Procter LLP*, in the amount of \$50,000. Staff now recommends increasing the contract amount to \$100,000.

Board approval will allow continuing general legal services to the district by Goodwin Procter LLP.

MOTION MADE BY: Mr. Snell

SECONDED BY: Ms. Pye

STUDENT ADVISORY VOTE: N/A

AYES: All (6) (Dr. Escarce was absent)

NOES: None (0)

TO: BOARD OF EDUCATION

ACTION/CONSENT

08/23/07

FROM: DIANNE TALARICO / MICHAEL D. MATTHEWS

RE: CERTIFICATED PERSONNEL - Elections, Separations

RECOMMENDATION NO. A.08

Unless otherwise noted, the following items are included in the 2007/2008 approved budget.

ADDITIONAL ASSIGNMENTS

CHILD DEVELOPMENT SERVICES

Dunn, Glenda	16 hrs @\$34.52	7/7/07-7/8/07	<u>Own Hrly/\$552</u>
		TOTAL OWN HOURLY	\$552

Comment: Set-Up for John Adams Preschool Opening
12-Gnrl Child Care (GCTR)

Landgraf, Heidi	6 hrs @\$19.55	7/7/07	<u>Own Hrly/\$117</u>
Sanchez, Johanna	6.25 hrs @\$20.94	7/7/07	<u>Own Hrly/\$131</u>
Smith, Courtnee	5 hrs @\$15.72	7/7/07	<u>Own Hrly/\$ 79</u>
		TOTAL OWN HOURLY	\$327

Comment: Set-Up for John Adams Preschool Opening
12-Gnrl Child Care (GCTR)

EDUCATIONAL SERVICES

Anderson, Meredith	35 hrs @\$39.28	8/6/07-8/10/07	<u>Est Hrly/\$1,375</u>
Cartegena, Lissette	35 hrs @\$39.28	8/6/07-8/10/07	<u>Est Hrly/\$1,375</u>
Davenport, Jeanne	25 hrs @\$39.28	8/6/07-8/10/07	<u>Est Hrly/\$ 982</u>
Gies, Gretchen	35 hrs @\$39.28	8/6/07-8/10/07	<u>Est Hrly/\$1,375</u>
Jones, Julie	35 hrs @\$39.28	8/6/07-8/10/07	<u>Est Hrly/\$1,375</u>
Lapajne, Katy	35 hrs @\$39.28	8/6/07-8/10/07	<u>Est Hrly/\$1,375</u>
Loopesko, Lorna	35 hrs @\$39.28	8/6/07-8/10/07	<u>Est Hrly/\$1,375</u>
Saling, David	35 hrs @\$39.28	8/6/07-8/10/07	<u>Est Hrly/\$1,375</u>
Stivers, Susan	35 hrs @\$39.28	8/6/07-8/10/07	<u>Est Hrly/\$1,375</u>
Whitaker, Cathie	35 hrs @\$39.28	8/6/07-8/10/07	<u>Est Hrly/\$1,375</u>
		TOTAL ESTABLISHED HOURLY	\$13,357

Comment: Middle School ELA Curriculum Mapping
01-Unrestricted Resource

Gusman-Garcia, R	15 hrs @\$39.28	9/10/06-6/30/07	<u>Est Hrly/\$589</u>
Magnuson, Ruth	15 hrs @\$39.28	9/10/06-6/30/07	<u>Est Hrly/\$590</u>
		TOTAL ESTABLISHED HOURLY	\$1,178

Comment: Coca-Cola Valued Youth Program
01-City of SM: Valued Youth Prog
(2006-2007 Budget Item)

Brown, Melissa	74 hrs @\$39.28	2/1/07-6/30/07	<u>Est Hrly/\$2,907</u>
Vo, Cam-An	36.5 hrs @\$39.28	1/1/07-6/30/07	<u>Est Hrly/\$1,434</u>
		TOTAL ESTABLISHED HOURLY	\$4,341

Comment: Intervention Counseling
01-Supplemental Counseling MS/HS
(2006-2007 Budget Item)

Felix, Michael	16 hrs @\$39.28	6/28/07-8/2/07	<u>Est Hrly/\$628</u>
		TOTAL ESTABLISHED HOURLY	\$628

Comment: Academic Intervention
01-Supplemental Counseling MS/HS

Boyd, Bryn	8 hrs @\$39.28	8/1/07-8/31/07	Est Hrly/\$314
Forrer, Brooke	8 hrs @\$39.28	8/1/07-8/31/07	Est Hrly/\$314
Gaynor, Susan	8 hrs @\$39.28	8/1/07-8/31/07	Est Hrly/\$314
Halley, Shannon	8 hrs @\$39.28	8/1/07-8/31/07	Est Hrly/\$314
Hecht, James	8 hrs @\$39.28	8/1/07-8/31/07	Est Hrly/\$314
Hinojosa, Judith	8 hrs @\$39.28	8/1/07-8/31/07	Est Hrly/\$314
Pust, Jennifer	8 hrs @\$39.28	8/1/07-8/31/07	Est Hrly/\$314
Ramos, Irene	8 hrs @\$39.28	8/1/07-8/31/07	Est Hrly/\$314
Silvestri, Marisa	8 hrs @\$39.28	8/1/07-8/31/07	Est Hrly/\$314
TOTAL ESTABLISHED HOURLY			\$2,826

Comment: Summer Academic Intervention
01-Supplemental Counseling MS/HS

Beasley, Linda	20 hrs @\$39.28	8/6/07-8/10/07	Est Hrly/\$786
Beltran, Sue	20 hrs @\$39.28	8/6/07-8/10/07	Est Hrly/\$786
Boxer, Lorissa	20 hrs @\$39.28	8/6/07-8/10/07	Est Hrly/\$786
Braff, Sarah	20 hrs @\$39.28	8/6/07-8/10/07	Est Hrly/\$786
Brock, Miriam	20 hrs @\$39.28	8/6/07-8/10/07	Est Hrly/\$786
Contreras, Sitara	20 hrs @\$39.28	8/6/07-8/10/07	Est Hrly/\$786
Daruty, Lila	20 hrs @\$39.28	8/6/07-8/10/07	Est Hrly/\$786
De la Rosa, Mary	20 hrs @\$39.28	8/6/07-8/10/07	Est Hrly/\$786
Demopoulous, K.	20 hrs @\$39.28	8/6/07-8/10/07	Est Hrly/\$786
Dresher, Pam	20 hrs @\$39.28	8/6/07-8/10/07	Est Hrly/\$786
Fliegel, Lois	20 hrs @\$39.28	8/6/07-8/10/07	Est Hrly/\$786
Gomez, Carolina	20 hrs @\$39.28	8/6/07-8/10/07	Est Hrly/\$786
Henning, Laura	20 hrs @\$39.28	8/6/07-8/10/07	Est Hrly/\$786
Hensel, Katja	20 hrs @\$39.28	8/6/07-8/10/07	Est Hrly/\$786
Herrera, Mayra	20 hrs @\$39.28	8/6/07-8/10/07	Est Hrly/\$786
Hyatt, Lova	20 hrs @\$39.28	8/6/07-8/10/07	Est Hrly/\$786
Kinsinger, Julie	20 hrs @\$39.28	8/6/07-8/10/07	Est Hrly/\$786
Martinez, Elizabeth	20 hrs @\$39.28	8/6/07-8/10/07	Est Hrly/\$786
Mendinueto, Darwin	20 hrs @\$39.28	8/6/07-8/10/07	Est Hrly/\$786
Rodriguez, Judith	20 hrs @\$39.28	8/6/07-8/10/07	Est Hrly/\$786
Schneider, Kirsten	20 hrs @\$39.28	8/6/07-8/10/07	Est Hrly/\$786
Tejeda, Katrina	20 hrs @\$39.28	8/6/07-8/10/07	Est Hrly/\$786
Thatcher, Cynthia	20 hrs @\$39.28	8/6/07-8/10/07	Est Hrly/\$786
Westmore, Elayne	20 hrs @\$39.28	8/6/07-8/10/07	Est Hrly/\$786
Witt, Carl	20 hrs @\$39.28	8/6/07-8/10/07	Est Hrly/\$786
TOTAL ESTABLISHED HOURLY			\$19,650

Comment: SmartArts Summer Institute Professional Development
01-LA County Arts Commission

MALIBU HIGH SCHOOL

DiMercurio, Joseph	300 hrs @\$39.28	8/31/07-6/20/08	Est Hrly/\$11,784
TOTAL ESTABLISHED HOURLY			\$11,784

Comment: After-School Library Supervision
01-Malibu Shark Fund

STUDENT SERVICES

Bronstein, Susan	14 hrs @\$39.28	8/31/07-6/20/08	Est Hrly/\$550
Ernst, Anne	14 hrs @\$39.28	8/31/07-6/20/08	Est Hrly/\$550
Jeffries, Jane	14 hrs @\$39.28	8/31/07-6/20/08	Est Hrly/\$550
Mahon, Meg	14 hrs @\$39.28	8/31/07-6/20/08	Est Hrly/\$550
Morn, Lora	14 hrs @\$39.28	8/31/07-6/20/08	Est Hrly/\$550
Niemi, Charlene	14 hrs @\$39.28	8/31/07-6/20/08	Est Hrly/\$550
Relles, Ellen	14 hrs @\$39.28	8/31/07-6/20/08	Est Hrly/\$550
TOTAL ESTABLISHED HOURLY			\$3,850

Comment: CPR Training for District Employees
01-Medi-Cal Billing Option

Bronstein, Susan	6 hrs @\$39.28	8/27/07-8/31/07	Est Hrly/\$236
Jeffries, Jane	6 hrs @\$39.28	8/27/07-8/31/07	Est Hrly/\$236
Niemi, Charlene	6 hrs @\$39.28	8/27/07-8/31/07	Est Hrly/\$236
Relles, Ellen	6 hrs @\$39.28	8/27/07-8/31/07	Est Hrly/\$236
Sachs, Teri	6 hrs @\$39.28	8/27/07-8/31/07	Est Hrly/\$236
Waldorf, Sherry	6 hrs @\$39.28	8/27/07-8/31/07	Est Hrly/\$236
TOTAL ESTABLISHED HOURLY			\$1,416

Comment: Nurse Preparation for the Opening of School
01-Medi-Cal Billing Option

Hannan, Ellen	100 hrs @\$39.28	9/5/07-6/30/08	Est Hrly/\$3,928
TOTAL ESTABLISHED HOURLY			\$3,928

Comment: Assist school nurses with Scoliosis/Vision/Hearing tests
01-Unrestricted Resource

TOTAL ESTABLISHED HOURLY, AND OWN HOURLY = \$63,837

ELECTIONS

TENURED CONTRACTS

<u>Name/Assignment/Location</u>	<u>Not to Exceed</u>	<u>Effective</u>
Greenfield, Sara/Eng-Humanities Lincoln MS	80%	8/31/07
Held, Pamela/K-1 st Webster Elementary	100%	8/31/07

PROBATIONARY CONTRACTS

<u>Name/Assignment/Location</u>	<u>Not to Exceed</u>	<u>Effective</u>
Ammons, Racher/Speech Path Special Education	100%	8/31/07
Andino, Melisa/MS Math Malibu High School	100%	8/31/07
Beatty, Carol/RSP Pt Dume Elementary	100%	8/31/07
Brown, Jaclyn/SDC-NS Roosevelt Elementary	100%	8/31/07
Campbell, Charlotte/2 nd Pt Dume Elementary	100%	8/31/07
Casas, Maria/Spanish John Adams MS	100%	8/31/07
Chenik, Mara Roosevelt Elementary	100% [rehire - Prob II]	8/31/07
Davies, Michael/SDC-NS Muir Elementary	100%	8/31/07
Dreier, Holly/Math Santa Monica HS	100%	8/31/07
Drucker, Michelle/SDC-IS Special Education	100%	8/31/07

Felix, Valerie/Social St Santa Monica HS	100%	8/31/07
Fernandez, Heidi/4 th Roosevelt Elementary	100% [rehire Prob II]	8/31/07
Gomez, Candelario/SDC-NS Santa Monica HS	100%	8/31/07
Graves, Gizelle/Teen Parenting Child Develop Svcs	100%	8/31/07
Hagen, Carol/Librarian John Adams MS	100%	8/31/07
Hampton, Lynne/5 th Franklin Elementary	100%	8/31/07
Hwang, Eugenie/4 th -5 th SMASH	100%	8/31/07
Ihrig, Debra/SDC-IS Grant Elementary	100%	8/31/07
Joyce-West, Jennifer/Art John Adams MS	100%	8/31/07
Keith, Kelly/RSP Santa Monica HS	100%	8/31/07
Kern, Kimberly/Lead Teacher Child Develop Svcs	100%	8/31/07
Landgraf, Heidi/Pre-School Child Develop Svcs	100%	8/31/07
Mabrey, Matthew/Biology Santa Monica HS	100%	8/31/07
Martin, Laurie/Speech Path Special Education	100%	8/31/07
Mayle, Alexander/HS English Malibu High School	100%	8/31/07
Maynard, Amy/ Franklin Elementary	100% [rehire - Prob II]	8/31/07
Micale, Monica/Kindergarten Franklin Elementary	100%	8/31/07
Miller, Jennifer/English/Journ Malibu High School	100%	8/31/07
Miller, Patrick/Spanish Malibu High School	100%	8/31/07
Morales, Carlos/4 th -5 th Edison Elementary	100%	8/31/07
Nadel, Jonathan/Math Malibu High School	100%	8/31/07

Orf, Sara/Speech Path Special Education	100%	8/31/07
Orozco, Joanna/Kindergarten-Immer Edison Elementary	100%	8/31/07
Parker, Trevor/RSP Santa Monica HS	100%	8/31/07
Perkins, Thea-Marie/English Santa Monica HS	100%	8/31/07
Powell, Erin/ Franklin Elementary	100% [rehire - Prob II]	8/31/07
Pulido, Maribel/Student Supp Adv Santa Monica HS	100% [rehire - Prob II]	8/31/07
Reardon, Mary Beth/Physics Santa Monica HS	100%	8/31/07
Reilly, Maureen/SDC-IS Lincoln MS	100%	8/31/07
Sanchez, Johanna/School Age Child Develop Svcs	100%	8/31/07
Silvestri, Marisa/Social St Santa Monica HS	100% [rehire - Prob II]	8/31/07
Staubitz, John/SDC-ED Santa Monica HS	100%	8/31/07
Stowell, Rachel/English Malibu High School	100%	8/31/07
Suminski, Mark/RSP Olympic High School	100%	8/31/07
Swann, Cara/6 th -7 th -8 th SMASH	100% [rehire - Prob II]	8/31/07
Vollstedt, Todd/Math Santa Monica HS	100%	8/31/07
Walker, Megan/English Santa Monica HS	100%	8/31/07
Whittaker, Elizabeth/RSP Roosevelt Elementary	100%	8/31/07
<u>TEMPORARY CONTRACTS</u>		
<u>Name/Assignment/Location</u>	<u>Not to Exceed</u>	<u>Effective</u>
Abbey, Chantal/RSP John Adams MS	100% [repl. B. Lipscomb/LOA]	8/31/07-6/20/08
Alfred, Chasta/English Santa Monica HS	100% [repl. T. Anderson/LOA]	8/31/07-6/20/08

Andreani, Erin/SDC-IS McKinley Elementary	100% [repl. A. Conrad/LOA]	8/31/07-6/20/08
Carter, Christian/3 rd Muir Elementary	100% [repl. R. Estrada/LOA]	8/31/07-6/20/08
Cervantes, Hayde/5 th McKinley Elementary	100% [repl. C. Lemmon/LOA]	8/31/07-6/20/08
Check, Laura/Counselor John Adams MS	100% [new position]	8/31/07-6/20/08
Colmenero, Maria/Spanish Santa Monica HS	100% [rehire - Temp II repl. V. Garcia/LOA]	8/31/07-6/20/08
Compton, Joseph/4 th Roosevelt Elementary	100% [repl. E. Paul/LOA]	8/31/07-6/20/08
Cowen, Kate/4 th McKinley Elementary	100% [repl. L. Light/LOA]	8/31/07-6/20/08
Cruce, Marae/Math Santa Monica HS	100% [repl. L. Adams/LOA]	8/31/07-6/20/08
DeHope, Kathryn/Counselor Malibu High School	100% [new position]	8/31/07-6/20/08
Evans, Jennifer/5 th McKinley Elementary	100% [repl. Taslimi/Emerson/LOA]	8/31/07-6/20/08
Fagan, Susan/Kindergarten Pt Dume Elementary	100% [new position]	8/31/07-6/20/08
Gravelle, Jessica/Elem Music Educational Services	100% [rehire - Temp II]	8/31/07-6/20/08
Gomez, Carolina/Kindergarten Rogers Elementary	100% [rehire - Temp II repl. P. Drescher/LOA]	8/31/07-6/20/08
Gonzalez, Jeffrey/5 th Franklin Elementary	100% [repl. A. Turner/LOA]	8/31/07-6/20/08
Green, Michael/Counselor Santa Monica HS	100% [new position]	8/31/07-6/20/08
Hampton, Lynne/5 th Franklin Elementary	100% [repl. A. Turner/LOA]	8/31/07-6/20/08
Handelman, Catherine Roosevelt Elementary	100% [rehire - Temp II repl. E. Olsheim/LOA]	8/31/07-6/20/08
Hoeffferle, Quinn/3 rd Roosevelt Elementary	100% [repl. D. Harris/LOA]	8/31/07-6/20/08
Kastenbaum, Justin/Social St Malibu High School	100% [rep. L. Eicks/LOA]	8/31/07-6/20/08
Kay, Benjamin/Biology Santa Monica HS	100% [rehire - Temp II]	8/31/07-6/20/08

Khaefi, Arian/Choral Music Malibu High School	80%	8/31/07-6/20/08
Kibler, John/Inst Music Malibu High School	40% [rehire - Temp III]	8/31/07-6/20/08
Lipsky, Jill/4 th Muir Elementary	100% [rehire - Temp II Repl. M. Ball/LOA]	8/31/07-6/20/08
Matthews, Jennifer/Counselor Lincoln MS/Olympic HS	100% [new position]	8/31/07-6/20/08
McCray, Angela/Math-Science Lincoln Middle School	100% [repl. D. Danesi/LOA]	8/31/07-6/20/08
Moulton, Evan/Math Santa Monica HS	100% [rehire - Temp II]	8/31/07-6/20/08
O'Meara, Peggy/SDC-NS Grant Elementary	100%	8/31/07-6/20/08
Ripley, Virginia/3 rd Grant Elementary	100% [rehire - Temp II]	8/31/07-6/20/08
Ross, Shannon Roosevelt Elementary	100% [rehire - Temp II repl. N. Berukhim/LOA]	8/31/07-6/20/08
Shifren, Norm/Spanish Santa Monica HS	100% [repl. C. Baustista/LOA]	8/31/07-6/20/08
Smith, Courtnee/Pre-School Child Develop Svcs	100% [repl. L. Vega/LOA]	8/31/07-6/20/08
Smith, Rachel/5 th Webster Elementary	100% [repl. K. McClure/LOA]	8/31/07-6/20/08
Toppel, Diane/Humanities John Adams MS	100% [repl. T. Daws/LOA]	8/31/07-6/20/08
Veral, Ramon/Math Santa Monica HS	100% [rehire - Temp VI]	8/31/07-6/20/08
Vo, Cam-An/Student Supp Adv Santa Monica HS	100% [repl. A. Alpert]	8/31/07-6/20/08
Wold, Jayme/2 nd -3 rd SMASH	100% [repl. K. Uema/LOA]	8/31/07-6/20/08

SUBSTITUTE TEACHERS

Effective

PREFERRED SUBSTITUTES

(@\$157.00 Daily Rate)

Orloff, Warren

8/1/07-8/10/07

Pitts, Gregory

7/31/07-8/8/07

REGULAR DAY-TO-DAY SUBSTITUTES

(@\$134.00 Daily Rate)

Hensley, Kristin 8/31/07
Russo, Rebecca 8/31/07

CHANGE IN ASSIGNMENT

Effective

Barba-Castro, Graciela 8/31/07

St/Family Support Srvcs/Teacher

From: Cotzen Teacher

To: ELD Teacher/Rogers Elementary

Crane, Lakin 8/31/07

Grant Elementary/Special Ed Teacher

From: Pt. Dume Elementary/SDC

To: Grant Elementary/SDC

DeGregorio, Dana 8/31/07

Roosevelt Elementary/Special Ed Teacher

From: Cabrillo Elementary/SDC

To: Roosevelt Elementary/SDC

DeVincendis-Waul, Ermina 8/31/07

Community Day School/SDC-NS

From: Santa Monica HS

To: Community Day School

Farruggia, Elizabeth 8/31/07

Santa Monica HS/Special Ed Teacher

From: Community Day School/RSP

To: Santa Monica HS/RSP

Jacob-Marai, Nora 8/31/07

Edison Elementary/Teacher

From: Kindergarten

To: Special Education/RSP

Lynch, Jennifer 8/31/07

McKinley Elementary/Reading

From: Roosevelt/1st

To: McKinley/Reading Specialist

Mackey, Tammy 8/31/07

Pt Dume Elementary/3rd

From: 50%

To: 100%

Kim, Elizabeth 8/31/07

Santa Monica HS/Special Ed Teacher

From: Pt Dume Elementary/RSP

To: Santa Monica HS/SDC-IS

Laufer, Lorraine 8/31/07

Rogers Elementary/Special Ed Teacher

From: Franklin Elementary/RSP

To: Rogers Elementary/RSP

Lebo, Meredith 8/31/07

Lincoln MS/Librarian

From: Santa Monica HS/Librarian

To: Lincoln MS/Librarian

Maiztegui, Laura 8/31/07
Edison Elementary/2nd
From: RSP/Title I
To: 2nd Grade

Meade, Mary Margaret 8/31/07
Edison Elementary/Teacher
From: 50%
To: 100%

Montgomery, Todd 8/31/07
Malibu HS/Special Ed Teacher
From: Olympic HS/SDC
To: Malibu HS/SDC

Reeser, Elizabeth 8/31/07
Roosevelt Elementary/1st
From: Rogers Elementary/1st
To: Roosevelt Elementary/1st

LEAVE OF ABSENCE (without pay)

<u>Name/Location</u>	<u>Effective</u>
Mc Namara, Jeanie John Adams MS	8/31/07-6/20/08 [personal]
Miyoshi, Melina Grant Elementary	8/31/07-6/20/08 [child care]

RESIGNATION

<u>Name/Location</u>	<u>Effective</u>
Razon-McMillan, Monica Child Develop Svcs	6/22/07

RETIREMENT

<u>Name/Location</u>	<u>Effective</u>
Zarenda, Nancy Franklin Elementary	6/22/07

MOTION MADE BY: Mr. Snell
SECONDED BY: Ms. Pye
STUDENT ADVISORY VOTE: N/A
AYES: All (6) (Dr. Escarce was absent)
NOES: None (0)

TO: BOARD OF EDUCATION

ACTION/CONSENT

08/23/07

FROM: DIANNE TALARICO / MICHAEL D. MATTHEWS

RE: SPECIAL SERVICE EMPLOYEES

RECOMMENDATION NO. A.09

It is recommended that the following Special Services Employee contracts be approved in accordance with District policies and salary schedules, and be assigned pursuant to BP 4213.5. Funding for the positions listed is included in the 2006-07 budget.

<u>Name/Location</u>	<u>Not to Exceed</u>	<u>Effective Dates</u>	<u>Rate</u>
Meek, Doris	\$13,500	7/1/07-9/30/07	\$4,500/mo
Child Development Services; coordinate a variety of parent education activities and parent/child activities for Infant and Family Support program.			
FUNDING:	12-94150-0-85000-10000-2917-070-1501		-50%
	L.A. Universal Preschool		
	12-60600-0-85000-10000-2917-070-1501		-50%
	CD: Gnrl Child Care (GCTR)		
Ramaro, Maria	\$1,500	6/1/07-6/30/07	\$25/hr
Rogers Elementary School; art instruction for K-5 students.			
FUNDING:	01-90150-0-11100-10000-2917-006-1501		-100%
	Reimbursed by PTA		

MOTION MADE BY: Mr. Snell
SECONDED BY: Ms. Pye
STUDENT ADVISORY VOTE: N/A
AYES: All (6) (Dr. Escarce was absent)
NOES: None (0)

TO: BOARD OF EDUCATION ACTION/CONSENT
08/23/07

FROM: DIANNE TALARICO / TIMOTHY R. WALKER / WILBERT YOUNG

RE: CLASSIFIED PERSONNEL - MERIT

RECOMMENDATION NO. A.10

It is recommended that the following appointments for Classified Personnel (merit system) be approved and/or ratified. All personnel will be properly elected in accordance with District policies and salary schedule.

<u>ELECTION</u>		<u>EFFECTIVE DATE</u>
CARY, WENDY MALIBU HIGH SCHOOL	INST ASST - SPECIAL ED 6 HRS/SY/RANGE: 20 STEP: D	9/4/07
TORRES, JOSE OPERATIONS	CUSTODIAN I 8 HRS/12 MO/RANGE: 22 STEP: A	8/6/07
VILLASENOR, RAFAEL MALIBU HIGH SCHOOL	CAMPUS SECURITY OFFICER 4 HRS/10 MO/RANGE: 25 STEP: A	8/28/07

<u>LIMITED-TERM ASSIGNMENT</u>		<u>EFFECTIVE DATE</u>
SCOTT, JAMES LARRY MAINTENANCE/OPERATIONS	DIRECTOR, FACILITY MANANGEMENT	7/25/07-1/15/08

<u>TEMP/ADDITIONAL ASSIGNMENTS</u>		<u>EFFECTIVE DATE</u>
BOYD, TERRY MALIBU HIGH SCHOOL	CUSTODIAN	7/1/07-6/30/07
GREENE, MILTON MALIBU HIGH SCHOOL	CAMPUS SECURITY OFFICER	7/1/07-6/30/08
MARTIN, ERIC MALIBU HIGH SCHOOL	CUSTODIAN	7/1/07-6/30/08
PEREZ, LUPE SUPERINTENDENT	TRANSLATOR	7/1/07-6/30/08
RODRIGUEZ, MARIA JOHN ADAMS MS	BILINGUAL LIAISON	9/10/06-6/30/07
TAYLOR, CANDICE MALIBU HIGH SCHOOL	CUSTODIAN	7/1/07-6/30/08
VARGAS, PATRICIA OLYMPIC HIGH SCHOOL	ADMINISTRATIVE ASST	7/1/07-6/30/08
VASQUEZ, GRACE MALIBU HIGH SCHOOL	CAMPUS SECURITY OFFICER	7/1/07-6/30/08
VILLASENOR, RAFAEL MALIBU HIGH SCHOOL	CAMPUS SECURITY OFFICER	8/28/07-6/30/08
WIDNER, KIM MALIBU HIGH SCHOOL	CUSTODIAN	7/1/07-6/30/08

<u>SUMMER ASSIGNMENTS</u>		<u>EFFECTIVE DATE</u>
AYALA, WILLY CHILD DEVELOP SVCS	CHILDREN CENTER ASST	6/25/07-8/3/07
BROTMAN, MARY SPECIAL EDUCATION	OCCUPATIONAL THERAPY ASST	7/1/07-8/8/07
CAMPOS, ROXANNA CHILD DEVELOP SVCS	CHILDREN CENTER ASST	6/25/07-8/2/07
CERVANTES, HAYDE STUDENT/FAMILY SVCS	INST ASST - BILINGUAL	6/29/07-8/8/07
CRAWFORD, CYNTHIA OPERATIONS	CUSTODIAN I	7/1/07-8/31/07
CRUSE, ANNE SPECIAL EDUCATION	INST ASST - SPECIAL ED	7/1/07-8/8/07
FLORES, MARIA SPECIAL EDUCATION	INST ASST - SPECIAL ED	7/1/07-8/8/07
GAGLIONE, LISA ADULT SCHOOL	INST ASST - CLASSROOM	8/1/07-8/10/07
GEAR, LYNNE SPECIAL EDUCATION	INST ASST - SPECIAL ED	7/1/07-8/8/07
GONZALEZ, JOSEPH ADULT EDUCATION	INST ASST - CLASSROOM	8/1/07-8/3/07
GORDON, ROBIN EDUCATIONAL SERVICES	SR OFFICE SPECIALIST	7/30/07-8/3/07
GREENE, MILTON JOHN ADAMS MS	CAMPUS SECURITY OFFICER	7/27/07-8/27/07
JONES, CHANCY JOHN ADAMS MS	CAMPUS SECURITY OFFICER	7/27/07-8/27/07
JONES, CHANCY JOHN ADAMS MS	CUSTODIAN	8/6/07-8/17/07
KELLER, JEFFREY SANTA MONICA HS	OUTREACH SPECIALIST	8/1/07-8/31/07
KOUZEKALANI, MEHRI CHILD DEVELOP SVCS	CHILDREN CENTER ASST	6/25/07-8/3/07
LUNA, GRETCHEN CHILD DEVELOP SVCS	CHILDREN CENTER ASST	7/1/07-8/31/07
MARTIN, KEVIN JOHN ADAMS MS	CAMPUS SECURITY OFFICER	7/27/07-7/29/07
MILLER, KAREN MCKINLEY ELEMENTARY	OFFICE SPECIALIST	7/28/07-9/5/07
MONROY, ROSA ROP	OFFICE SPECIALIST	8/6/07-8/27/07

NAO, KIM SANTA MONICA HS	OUTREACH SPECIALIST	6/28/07-8/2/07
PENA, JAIME JOHN ADAMS MS	CAMPUS SECURITY OFFICER	7/27/07-8/27/07
RENDON, VIRGINIA OPERATIONS	CUSTODIAN I	7/1/07-9/4/07
VILLA, MONICA CHILD DEVELOP SVCS	CHILDREN CENTER ASST	6/25/07-8/3/07
WILSON, STANLEY JOHN ADAMS MS	CAMPUS SECURITY OFFICER	7/27/07-8/27/07
WILSON, STANLEY OPERATIONS	CUSTODIAN	7/1/07-8/31/07
WOODRUFF, ED ADULT EDUCATION	CAMPUS SECURITY OFFICER	7/16/07-7/31/07
WOODRUFF, ED ADULT EDUCATION	CAMPUS SECURITY OFFICER	8/1/07-8/3/07

SUBSTITUTES

KOPEK, TONI PURCHASING	REPROGRAPHICS OPERATOR	<u>EFFECTIVE DATE</u> 8/1/07-6/30/08
MARSHALL, XAVIER OPERATIONS	CUSTODIAN I	7/1/07-6/30/08
MERCER, JAMES OPERATIONS	CUSTODIAN I	7/1/07-6/30/08
PARTRIDGE, FRANCES HUMAN RESOURCES	OFFICE SPECIALIST	7/1/07-6/30/08
PASS, MICHAEL OPERATIONS	CUSTODIAN I	7/1/07-6/30/08
TORRES RIOS, RAUL OPERATIONS	CUSTODIAN I	7/1/07-6/30/08

LEAVE OF ABSENCE (PAID)

GONZALEZ, HECTOR MAINTENANCE	SPRINKLER REPAIR TECH MEDICAL	<u>EFFECTIVE DATE</u> 7/10/07-7/24/07
---------------------------------	----------------------------------	-------------------------------------------------

LEAVE OF ABSENCE (UNPAID)

GONZALEZ, JOSEPH ADULT EDUCATION	INST ASST - CLASSROOM PERSONAL	<u>EFFECTIVE DATE</u> 9/4/07-6/20/08
SCOTT, MAREN FRANKLIN ELEMENTARY	INST ASST - SPECIAL ED PERSONAL	9/4/07-12/21/07

<u>STIPEND</u> SLAWTER, CYNTHIA MALIBU HIGH SCHOOL	SR OFFICE SPECIALIST \$1,000 PER SEMESTER COORDINATOR, COMMUNITY SERVICE PROGRAM	<u>EFFECTIVE DATE</u> 7/1/07-6/30/07
-----------------------------------------------------------------	----------------------------------------------------------------------------------------	------------------------------------------------

<u>WORKING OUT OF CLASS</u> HERRERA, ZENON GROUNDS	EQUIP OPERATOR/TREE TRIMMER FR: EQUIPMENT OPERATOR	<u>EFFECTIVE DATE</u> 7/1/07-11/2/07
-----------------------------------------------------------------	-------------------------------------------------------	------------------------------------------------

<u>ESTABLISHMENT OF POSITION</u>	INST ASST - SPECIAL ED 6 HRS/SY; GRANT ELEMENTARY	<u>EFFECTIVE DATE</u> 9/1/07
	INST ASST - SPECIAL ED 6 HRS/SY; GRANT ELEMENTARY	9/1/07
	INST ASST - SPECIAL ED 6 HRS/SY; MALIBU HIGH SCHOOL	9/1/07
	INST ASST - SPECIAL ED 6 HRS/SY; CABRILLO ELEMENTARY	9/1/07
	INST ASST - SPECIAL ED 6 HRS/SY; MCKINLEY ELEMENTARY	9/1/07
	INST ASST - SPECIAL ED 6 HRS/SY; GRANT ELEMENTARY	9/1/07
	INST ASST - SPECIAL ED 4 HRS/SY; SANTA MONICA HS	9/1/07

<u>ABOLISHMENT OF POSITION</u>	INST ASST - SPECIAL ED 6 HRS/SY; CABRILLO ELEMENTARY	<u>EFFECTIVE DATE</u> 9/1/07
	INST ASST - SPECIAL ED 6 HRS/SY; CABRILLO ELEMENTARY	9/1/07
	INST ASST - SPECIAL ED 6 HRS/SY; CABRILLO ELEMENTARY	9/1/07
	INST ASST - SPECIAL ED 6 HRS/SY; MALIBU HIGH SCHOOL	9/1/07
	INST ASST - SPECIAL ED (1:1) 6 HRS/SY; MCKINLEY ELEMENTARY	9/1/07
	INST ASST - SPECIAL ED (1:1) 6 HRS/SY; MCKINLEY ELEMENTARY	9/1/07
	INST ASST - SPECIAL ED (1:1) 6 HRS/SY; ROGERS ELEMENTARY	9/1/07
	INST ASST - SPECIAL ED (1:1) 3 HRS/SY; SMASH	9/1/07
	INST ASST - SPECIAL ED 1 HR/SY; WEBSTER ELEMENTARY	9/1/07
	INST ASST - SPECIAL ED 6 HRS/SY; JOHN ADAMS MS	9/1/07

RESIGNATION

		<u>EFFECTIVE DATE</u>
BARBERA, ALICE MCKINLEY ELEMENTARY	INST ASST - SPECIAL ED	8/7/07
CERVANTES, HAYDE MCKINLEY ELEMENTARY	INST ASST - CLASSROOM	8/22/07
DUFFY, KATHERINE SPECIAL EDUCATION	INST ASST - SPECIAL ED	8/3/07
GALLEGOS, YOLANDA LINCOLN MIDDLE SCHOOL	INST ASST - SPECIAL ED	6/22/07
HAWLEY, NANCY FOOD SERVICES	CAFETERIA WORKER I	7/10/07
KIRKPATRICK, SHARON LINCOLN MIDDLE SCHOOL	INST ASST - SPECIAL ED	7/27/07
POP, LELIA CHILD DEVELOP SVCS	CHILD CARE ASSISTANT	7/3/07
WEEKS, CARLA FOOD SERVICES	KITCHEN COORDINATOR	8/5/07
ZACCAGNINO, ANTHONY SANTA MONICA HS	INST ASST - SPECIAL ED	8/17/07
ZIEMIALKOWSKI, LISA FOOD SERVICES	CAFETERIA WORKER I	7/31/07

RETIREMENT

		<u>EFFECTIVE DATE</u>
HALPERN, SONJA MALIBU HIGH SCHOOL	COLLEGE/CAREER ADVISOR	11/31/07

MOTION MADE BY: Mr. Snell
SECONDED BY: Ms. Pye
STUDENT ADVISORY VOTE: N/A
AYES: All (6) (Dr. Escarce was absent)
NOES: None (0)

TO: BOARD OF EDUCATION

ACTION/CONSENT

08/23/07

FROM: DIANNE TALARICO / TIMOTHY R. WALKER / WILBERT YOUNG

RE: CLASSIFIED PERSONNEL - NON-MERIT

RECOMMENDATION NO. A.11

It is recommended that the following be approved and/or ratified for Classified Personnel (Non-Merit). All personnel assigned will be properly elected on a temporary basis to be used as needed in accordance with District policies and salary schedules.

COACHING ASSISTANT

GRAY, CARLOS	MALIBU HIGH SCHOOL	7/1/07-6/30/08
HUMPHREY, RAY	MALIBU HIGH SCHOOL	7/1/07-6/30/08
ZWEIG, MARIE	MALIBU HIGH SCHOOL	7/1/07-6/30/08

MOTION MADE BY: Mr. Snell

SECONDED BY: Ms. Pye

STUDENT ADVISORY VOTE: N/A

AYES: All (6) (Dr. Escarce was absent)

NOES: None (0)

MAJOR ITEMS

TO: BOARD OF EDUCATION
FROM: DIANNE TALARICO / KATHY WISNICKI
RE: ESTABLISH SMALL SCHOOLS TASK FORCE

ACTION/MAJOR
08/23/07

RECOMMENDATION NO. A.12

It is recommended that the Board of Education establish a task force to study the feasibility of creating an additional High School and/or Middle High School within the Santa Monica Malibu Unified School District.

The secondary schools in Santa Monica, particularly Santa Monica High School, are larger than optimal size. Current research on school reform validates the success of "small learning communities," specifically, schools of approximately 500 students. These research findings, along with several grant opportunities, enabled the district to implement the current house design at Santa Monica High School. This design resulted in substantial and significant gains in student achievement since its inception along with providing access and opportunity for more students to gain entrance into rigorous courses. While the current structure at SAMOHI offers many advantages to students, not all students desire or will succeed in a large comprehensive high school. Therefore, it seems evident that reducing the number of students at SAMOHI would significantly improve the teaching and learning conditions on that campus while also providing another learning opportunity for students in Santa Monica and Malibu.

Further, during the 2003/2004 academic year, the former Superintendent, several Board of Education members, and the SMMCTA President had the opportunity to visit several small school models throughout the country. Based on the board's desire to create additional and optimal learning environments for students, the board established the study of the small schools concept and proposals for SMMUSD as a performance target for that year. Due to a myriad of other challenges that occurred, this target was set aside for that year with the intention to bring it back should funding for such a concept become available. With the completion of the Facilities Master Plan and the passage of Measure "BB," now is the opportune time to undertake this initiative.

The committee shall study and research small High Schools and or Middle High Schools, examine the feasibility of this concept for SMMUSD. The committee will also explore models other than a comprehensive high school that would attract students with different interests and provide an additional educational opportunity for secondary students. Further, in conjunction with

proposed Measure "BB" projects, the committee will examine the feasibility of creating a smaller high school campus on existing district property, such as Olympic High School. The committee will also examine the proposed K-8 model for the existing Edison site.

The committee shall be appointed by no later than October 1, 2007, and shall update the Board of Education in December 2007, Spring 2008, and present their findings in June 2008. This proposed timeline corresponds to the tentative timeline for the CEQA review. It is anticipated that recommendations from this committee will assist the board in determining project priorities based on educational goals.

The committee shall include the following members: district senior staff, teacher(s), secondary school administrator(s), an SMMCTA representative, a parents, student(s), a member(s) of the business community, **an SEIU representative**, and a member(s) of the Board of Education.

COMMENT: This item was first discussed at the August 9, 2007, board meeting as *Discussion Item. No. D.03*.

***** ***** ***** ***** ***** *****

Public Comments:

- *Ms. Lisa Proft and Mr. John Lee, members of the community, addressed the board regarding Edison Language Academy.*

The Superintendent and President of the SMMCTA agreed to serve on the committee. The board also encouraged teachers and administrators to serve on the committee.

Board Member Leon-Vazquez suggested the district communicate with the City of Santa Monica regarding a joint-use library on the Edison campus.

MOTION MADE BY: Mr. Snell
SECONDED BY: Ms. Pye
STUDENT ADVISORY VOTE: N/A
AYES: All (6) (Dr. Escarce was absent)
NOES: None (0)

TO: BOARD OF EDUCATION

ACTION/MAJOR

08/23/07

FROM: DIANNE TALARICO

RE: ASSIGNMENT OF BOARD OF EDUCATION LIAISON TO DISTRICT
ADVISORY COMMITTEE (DAC)

RECOMMENDATION NO. A.13

It is recommended that the Board of Education approve the following assignment as board liaison to the District Advisory Committees (DACs).

DAC

Board Liaison

Measure "BB" Advisory Committee

Ralph Mechur

COMMENT: Mr. Ralph Mechur was appointed to the Board of Education at the August 9, 2007, board meeting. His past experience serving on both the Ad Hoc Facilities Committee and the Measure "BB" Advisory Committee will allow him to liaise between the committee and the board effectively.

Board Member Mechur will serve as co-liaison to the Measure "BB" Advisory Committee along with Board President Wisnicki, who was assigned as the board liaison in January 2007.

MOTION MADE BY: Mr. Snell

SECONDED BY: Ms. Pye

STUDENT ADVISORY VOTE: N/A

AYES: All (6) (Dr. Escarce was absent)

NOES: None (0)

TO: BOARD OF EDUCATION

ACTION/MAJOR

08/23/07

FROM: DIANNE TALARICO / MICHAEL D. MATTHEWS

RE: ADMINISTRATIVE APPOINTMENTS

RECOMMENDATION NO. A.14

It is recommended that the Board of Education approve the following administrative appointments:

CERTIFICATED APPOINTMENT

Effective

Monahan, Martha
Assistant Principal, Grant Elementary School

8/24/07

Gardner, Melissa
Behavior Intervention Specialist, Special Education

8/24/07

MOTION MADE BY: Mr. Snell
SECONDED BY: Ms. Pye
STUDENT ADVISORY VOTE: N/A
AYES: All (6) (Dr. Escarce was absent)
NOES: None (0)

TO: BOARD OF EDUCATION

ACTION/MAJOR

08/23/07

FROM: DIANNE TALARICO / STEPHEN R. HODGSON

UPDATE

RE: APPOINT ADDITIONAL MEMBERS TO PARCEL TAX RENEWAL
FEASIBILITY COMMITTEE

RECOMMENDATION NO. A.15

It is recommended that the Board of Education appoint additional members establish to the Parcel Tax Renewal Feasibility Committee.

COMMENT: At the August 9, 2007, meeting, the board established and appointed members to the Parcel Tax Renewal Feasibility Committee. At the time of the meeting, a few individuals who had been asked to serve on the committee had not yet responded. Below are the names of individuals who responded following the August 7th meeting.

Committee Members (alphabetical order):

Abby Arnold

Don Girard

***** ***** ***** ***** ***** *****

SMMCTA President Keiley offered the union's office space for meetings if room at the district office was not available.

The first meeting of the committee has been tentatively scheduled for August 29th. The committee members will be receiving information.

MOTION MADE BY: Mr. Snell

SECONDED BY: Ms. Pye

STUDENT ADVISORY VOTE: N/A

AYES: All (6) (Dr. Escarce was absent)

NOES: None (0)

TO: BOARD OF EDUCATION
FROM: DIANNE TALARICO / CHIUNG-SALLY CHOU
RE: NEW POLICY 6020 - PARENT INVOLVEMENT

ACTION/MAJOR
08/23/07

RECOMMENDATION NO. A.16

It is recommended the Board of Education adopt Board Policy 6020 - Parent Involvement. This will replace Board Policy 1241 - Parent Involvement.

COMMENT: This item was brought to the board on August 9, 2007, as *Discussion Item No. D.08*.

Attachment:

- Board Policy 6020 - Parent Involvement

Board Member Pye requested information regarding how the sites are using Title I funding to increase parent involvement in those communities.

Board President Wisnicki requested information regarding how the school site staff have responded to the Title I feedback from parent surveys.

Superintendent Talarico explained that district office management would be visiting the school sites at least a couple hours per week to increase communication and ensure the needs of the school sites and parents are being met.

MOTION MADE BY: Mr. Snell
SECONDED BY: Ms. Pye
STUDENT ADVISORY VOTE: N/A
AYES: All (6) (Dr. Escarce was absent)
NOES: None (0)

THIS IS A **NEW POLICY** (Replacing BP 1241)

New text in underline

Deleted text in ~~strikeout~~

<u>NUMBER</u>	<u>ARTICLE</u>	<u>TITLE</u>		
<u>6020</u>	<u>Instruction</u>	<u>Parent Involvement</u>		
<u>SUBTOPIC</u>	<u>POLICY</u>	<u>REGULATION</u>	<u>EXHIBIT</u>	
<u>Concepts and Roles</u>	<u>X</u>			

DETAIL

The Board of Education recognizes the necessity and value of parent involvement to support student success and academic achievement. The Board also recognizes that parents/guardians are their children's first and most influential teachers and that sustained parent involvement in the education of their children contributes greatly to student achievement and a positive school environment. The Board believes that respectful collaboration between parents and teachers is essential and supports the implementation of strategies to assure that collaboration. The Superintendent or designee shall work with staff and parents/guardians to develop meaningful opportunities at all grade levels for parents/guardians to be involved in district and school activities; advisory, decision-making, and advocacy roles; and activities to support learning at home.

Parents/guardians shall be notified of their rights to be informed about and to participate in their children's education and of the opportunities available to them to do so. In order to assure collaborative partnerships between parents and schools, the Board, working through the administration, is committed to:

- a. involving parents as partners in school governance including shared decision making.
- b. Establishing effective two-way communication with all parents, respecting the diversity and differing needs of families.
- c. Developing strategies and programmatic structures at schools to enable parents to participate actively in their children's education.
- d. Providing support and coordination for school staff and parents to implement and sustain appropriate parent involvement from kindergarten through grade twelve.
- e. Utilizing schools to connect students and families with community resources that provide educational enrichment and support.

The Superintendent or designee shall regularly evaluate and report to the Board on the effectiveness of the district's

parent involvement efforts, including, but not limited to, input from parents/guardians and school staff on the adequacy of parent involvement opportunities and barriers that may inhibit parent/guardian participation.

Title I Schools

Each year the Superintendent or designee shall identify specific objectives of the district's parent involvement program for schools that receive Title I funding. He/she shall ensure that parents/guardians are consulted and participate in the planning, design, implementation, and evaluation of the parent involvement program. (Education Code 11503)

The Superintendent or designee shall ensure that the district's parent involvement strategies are jointly developed with and agreed upon by parents/guardians of students participating in Title I programs. Those strategies shall establish expectations for parent involvement and describe how the district will carry out each activity listed in 20 USC 6318. (20 USC 6318)

The Superintendent or designee shall consult with parents/guardians of participating students in the planning and implementation of parent involvement programs, activities, and regulations. He/she also shall involve parents/guardians of participating students in decisions regarding how the district's Title I funds will be allotted for parent involvement activities. (20 USC 6318)

Each school receiving Title I funds shall including the following in the Parent Involvement Plan:

1. Provide meaningful consultation with the parents of students served.
2. Plan and implement programs, activities, and procedures, as required under Title I, that involve parents in the education of their children.
3. Develop a parental involvement policy with the participation of parents. This policy becomes a part of the Local Educational Agency (LEA) Plan and establishes the District's expectations for parental involvement. The parental involvement policy describes how the LEA will:
 - Involve parents in helping to develop the LEA Plan.
 - Involve parents in the process of school review and improvement.
 - Provide schools with the assistance necessary to plan and implement effective parental involvement activities that will improve student academic achievement and school performance.

- Build a school's capacity for strong parental involvement by:
 - Helping parents understand the state academic content standards and state assessments
 - Providing materials and training to help parents work with their children to improve their children's academic achievement
 - Involving parents in school activities, especially academically related ones
- Educate teachers and other staff, with the assistance of parents, about:
 - Recognizing the value and usefulness of parents' contributions
 - Reaching out to, communicating with, and working with parents as equal partners
 - Implementing and coordinating parent programs
 - Building ties between parents and the school
- Coordinate the parental involvement program with other programs, such as Head Start, Reading First, and public preschools.
- Provide reasonable support for parental involvement activities under Title I as parents may request.
- Conduct, with the help of parents, an annual evaluation of the parental involvement policy and its effectiveness in improving the academic quality of Title I schools.
- Identify barriers to greater participation by parents in activities authorized by Title I.
- Submit parents' comments to the California Department of Education if the LEA Plan is not satisfactory to parents.
- 4. Reserve one percent of the Title I funds for parental involvement activities if the LEA receives more than \$500,000, District shall:
 - Involve parents in the decisions regarding how the parental involvement funds are spent.
 - Distribute 95 percent of the parental involvement funds to Title I schools.
- 5. Provide opportunities for full participation to parents with limited English proficiency, parents of migrant children, and parents with disabilities.
- 6. Include parents, when possible, as a part of school support teams designed to assist the District and schools in increasing student achievement.
- 7. Give parents an easy-to-understand annual District Accountability Report Card.
- 8. Notify parents when a teacher who does not meet the teacher requirements of NCLB has taught the child for four or more consecutive weeks.

9. Provide parents with timely information about schools in a language and format they can understand. The information shall include annual notification of:
- The level of achievement of their child in each academic assessment required by state and federal laws
 - The names of schools identified by the state as Program Improvement (PI) schools
 - The parental option to transfer a child from a PI school to a non-PI school (Transportation is to be paid by the LEA according to local policy. If demand exceeds available funds, priority for this service goes to the lowest-achieving students.)
 - The supplemental educational services available in PI schools:
 - Eligibility requirements for students to obtain supplemental educational services
 - Names of approved providers and their qualifications
 - Help available to parents in selecting a provider, if requested
 - Assurance of fair and equitable procedures for serving students
 - Privacy policies that protect the identity of the student
 - Information about English learners (if Title I funds are used to provide an educational language-instruction program):
 - The reasons the child is identified as an English learner and where he/she will be placed
 - The child's levels of English and academic achievement and how the levels were assessed
 - A description of the programs available, the differences between them, and the methods of instruction
 - The ways in which the programs will meet the child's educational strengths and needs
 - The ways in which the programs will help the child learn English and grade-level standards for promotion and graduation
 - The exit requirements of the program, including the expected rate of transition to an English-language mainstream classroom, and the expected rate of graduation from high school
 - The ways in which the programs will meet the objectives of an individualized education program for a child with disabilities
 - The right of the parent to decline enrollment, request the child be moved from the program offered, or receive help in choosing another one
 - The right to request the professional qualifications of their children's classroom teachers, including:
 - The teacher's qualifications to teach the subject matter

- o The type of credential held
- o The degree or graduate certificate held
- o If services are provided by a paraprofessional, what type of services and the paraprofessional's qualifications

REFERENCE

Legal Reference:

EDUCATION CODE

11500-11506 Programs to encourage parent involvement

48985 Notices in languages other than English

51101 Parent rights and responsibilities

64001 Single plan for student achievement

LABOR CODE

230.8 Time off to visit child's school

UNITED STATES CODE, TITLE 20

6311 Parental notice of teacher qualifications and student achievement

6312 Local educational agency plan

6314 Schoolwide programs

6316 School improvement

6318 Parent involvement

CODE OF FEDERAL REGULATIONS, TITLE 28

35.104 Definitions, auxiliary aids and services

35.160 Communications

MANAGEMENT RESOURCES:

CSBA PUBLICATIONS

Parent involvement: Development of Effective and Legally Compliant Policies, Governance and Policy Services Policy Briefs, August 2006

STATE BOARD OF EDUCATION POLICIES

89-01 Parent involvement in the Education of Their Children, rev. 1994

U.S. DEPARTMENT OF EDUCATION NON-REGULATORY GUIDANCE

Parental involvement: Title I, Part A, April 23, 2004

WEB SITES

CSBA: <http://www.csba.org>

California Department of Education, Family, School, Community Partnerships: <http://www.cde.ca.gov/ls/pf>

California Parent Center: <http://parent.sdsu.edu>

California State PTA: <http://www.capta.org>

National Coalition for Parent involvement in Education:

<http://www.ncpie.org>

National PTA: <http://www.pta.org>

No Child Left Behind: <http://www.ed.gov/nclb>

Parent Information and Resource Centers: <http://www.pirc-info.net>

Parents as Teachers National Center: <http://www.parentsasteachers.org>

U.S. Department of Education: <http://www.ed.gov>

ADOPTED

BP 1241 June 24, 1991

REVISED

xxxxx

CSBA DATE

August 2006

DISTRICT GOAL: Quality Education for All

TO: BOARD OF EDUCATION

ACTION/MAJOR

08/23/07

FROM: DIANNE TALARICO / CHIUNG-SALLY CHOU

RE: DELETE POLICY 1241 - PARENT INVOLVEMENT

RECOMMENDATION NO. A.17

It is recommended the Board of Education delete Board Policy 1241 - Parent Involvement. This is being replaced with Board Policy 6020 - Parent Involvement.

COMMENT: This item was brought to the board on August 9, 2007, as *Discussion Item No. D.09*.

MOTION MADE BY: Mr. Snell

SECONDED BY: Ms. Pye

STUDENT ADVISORY VOTE: N/A

AYES: All (6) (Dr. Escarce was absent)

NOES: None (0)

DISCUSSION ITEMS

TO: BOARD OF EDUCATION

DISCUSSION

08/09/07

FROM: DIANNE TALARICO / STEPHEN R. HODGSON /
VIRGINIA I. HYATT / J.W. BERRIMAN

RE: PRIORITIZATION OF FACILITIES MASTER PLAN PROJECTS FOR
MEASURE "BB" - SAMOHI AND MALIBU HS

DISCUSSION ITEM NO. D.01

Incorporated within the district's Facility Master Plan (FMP) are defined projects based on current and future facility and curriculum requirements relating to the Measure "BB" bond. The purpose of the bond is "to enable the District to enhance the educational opportunities of all the students in the District and to achieve one of the Board's primary goals of providing comparable schools for all students throughout the District." During the development of the FMP, it was apparent that in order to achieve these goals, the need was to focus on technology, fire/life/safety, and sustainability.

A detailed Project Analysis for SAMOHI and Malibu HS identifying the priorities of the Facilities Master Plan projects will be made available at the board meeting. Due to time constraints, the scope of projects for the remaining sites will be brought forward for discussion at a future meeting.

Dr. Hodgson explained that district and Santa Monica City staff recently met regarding joint use opportunities. Board Member Leon-Vazquez explained that members of the Santa Monica City Council have expressed interest in building a library at Edison Language Academy as a joint use space.

Board Member Mechur asked if Samohi would lose use of the campus library during construction. Mr. Berriman clarified that part of the library and shop building could be used as temporary classroom space during construction. Library services would continue during this time.

Board President Wisnicki urged staff to speak with the City of Malibu regarding joint use opportunities and the Malibu High School field. She also inquired as to the improvement of the facades of the school sites.

Mr. Berriman clarified that restroom improvements would be part of Deferred Maintenance projects, not Measure "BB" projects.

TO: BOARD OF EDUCATION

DISCUSSION

08/23/07

FROM: DIANNE TALARICO / STEPHEN R. HODGSON

RE: REVIEW POLICY 1330 - USE OF FACILITIES AND BARNUM HALL FACILITIES USE AGREEMENT

DISCUSSION ITEM NO. D.02

At the request of the board, this policy and Rental Agreement are being brought forth as a Discussion Item.

Attachments:

- Board Policy 1330 - Use of Facilities
- Board Policy Exhibit 1330 - Use of Facilities (Barnum Hall)
- SMMUSD Facilities Use Agreement - Barnum Hall Performance (available in hard copy only)
- Guidelines for Use of Barnum Hall and the Greek Theatre (available in hard copy only)
- Rental Rates for Barnum Hall and the Greek Theatre (available in hard copy only)

***** ***** ***** ***** ***** *****

Public Comments:

- *Mr. Greg Moul, Mr. Rick Regalado, Mr. Jason Detamore, and Ms. Leila Sedighan, members of Santa Monica Youth Football, addressed the board regarding fees associated with use of district facilities.*

The board directed staff to waive the athletic field rental fee for the four game days for the Santa Monica Youth Football League, but maintain the security fee rate. Additionally, the board directed staff to do a thorough review of the fee schedule for non-profit groups and to more clearly define "adequate security."

The board also requested that the Facilities Use Agreement be brought back at a future meeting after staff has completed gathering the necessary information, including fees charged for facilities use by neighboring school districts.

THIS IS AN EXISTING POLICY

<u>NUMBER</u>	<u>ARTICLE</u>	<u>TITLE</u>		
1330	Community Relations	Use of School Facilities		
<u>SUBTOPIC</u>	<u>POLICY</u>	<u>REGULATION</u>	<u>EXHIBIT</u>	
Public Activities Involving Staff, Students or School Facilities	X			

DETAIL

The Board of Education recognizes that district facilities are a powerful resource for supporting and expanding learning opportunities within our community. The primary purpose of school facilities is to be used for school programs and activities. The Board also encourages and authorizes the use of school facilities by outside organizations and community groups for purposes provided for in the Civic Center Act, when such use does not interfere with regular school hours of operation.

B. Priority Use of Facilities

1. All school district programs and departments (e.g. Child Development) shall have first priority for shared use of facilities within the district as defined in the Education Code.
2. All school-related activities (clubs, class events etc.) shall be given next priority in the use of facilities under the Civic Center Act.
3. Thereafter, the Board favors facility uses that provide extended learning opportunities to the school community and then to the community at-large.
4. Thereafter, the use of facilities will be on a first-come, first-served basis.

The Superintendent or designee shall make every effort to work with the cities of Santa Monica and Malibu with respect to coordinating the most efficient shared use of grounds and facilities, which is in keeping with the Board's vision, goals, belief statements and outcomes.

C. Charges for Use of Facilities

The Board authorizes the use of school facilities without charge by nonprofit organizations, clubs or associations organized to promote youth, school and civic activities or when use of the facilities clearly benefits the school community by improving or expanding learning opportunities. Such groups include, but are not limited to, Site-Governance Councils, parent-teacher associations, school-community advisory councils and Girl Scouts, Boy Scouts and Camp Fire, Inc.

Other groups requesting the use of school facilities under the Civic Center Act shall be charged at least direct costs.

1. Fair Rental Value

Groups shall be charged fair rental value when using school facilities or grounds for entertainment or meetings where admission is charged or contributions solicited and net receipts are not to be expended for charitable purposes or for the welfare of the district's students. (Education Code 38134)

2. Sharing Revenues with Sites

The Superintendent or designee shall establish procedures whereby a percentage of the fees collected for use of facilities shall be shared directly with the sites to maintain the physical integrity of the school sites.

D. Restrictions/Prohibitions on Use of Facilities

No District buildings or grounds shall be used for the purpose of employees conducting private tutoring, counseling and/or assessments, for which a fee or other compensation is received. The use of alcoholic beverages and/or tobacco products is prohibited on any district property.

REFERENCE

EDUCATION CODE

10900-10914.5 Community Recreation Programs

38130-38138 Civic Center Act: use of school property for public purposes

ATTORNEY GENERAL OPINIONS

79 Ops.Cal.Atty.Gen 248 (1996)

COURT DECISIONS

Lamb's Chapel v. Center Moriches Union Free School District (1993) 113 S.Ct. 2141

Cole v. Richardson, (1972) 405 U.S. 676, 92 S.Ct. 1332

Connell v. Higgenbotham, (1971) 403 U.S. 207, 91 S.Ct. 1772

ACLU of So. Calif. v. Board of Education of San Diego, (1963) 59 Cal .2d 224

ACLU of So. Calif. v. Board of Education of Los Angeles, (1963) 59 Cal .2d 203

ACLU of So. Calif. v. Board of Education of San Diego, (1961) 55 Cal .2d 906

ACLU of So. Calif. v. Board of Education of Los Angeles, (1961) 55 Cal .2d 167

MANAGEMENT RESOURCES

CDE LEGAL ADVISORIES

1101.89 School District Liability and "Hold Harmless" Agreements, LO: 4-89

ADOPTED

April 1, 1999

REVISED

CSBA DATE

June 1997

DISTRICT GOAL

Quality Education For All

<u>NUMBER</u>	<u>ARTICLE</u>	<u>TITLE</u>	<u>EXHIBIT</u>
1330	Community Relations	Use of Facilities (Barnum Hall)	
<u>SUBTOPIC</u>	<u>POLICY</u>	<u>REGULATION</u>	<u>EXHIBIT</u>
Public Activities Involving Staff, Students or School Facilities			X

DETAIL

SANTA MONICA HIGH SCHOOL
BARNUM HALL

The use of Barnum Hall, except for school activities, shall be limited to the use of the stage, auditorium, dressing rooms, ticket office and entrance corridor, and shall not include use of other facilities, projection machines or any student body equipment. Persons or organizations using the building on permit will not be permitted to make any changes or alterations in existing electrical equipment, including switchboards, lamps, stage curtains or other equipment. Organizations shall not be entitled to use any of the stage flats or wagons, which belong to the school district.

The footlight, the strip lights on border pipes #1, #2, and #3, the balcony pocket spotlights (6), and the bridge spotlights (6) in the auditorium ceiling are house equipment and may be used by persons or organizations using the building on permit. The Arc spot in the projection booth may be use if operated by an authorized school district electrician.

All other spotlights (Ellipsoidal, Fresnel and Beam) were purchased by the A.S.B. or Drama Club and are not available for other organizations.

REFERENCE

MANAGEMENT RESOURCES:

<u>ADOPTED</u>	<u>REVISED</u>	<u>CSBA DATE</u>
November 28, 1998		

DISTRICT GOAL

**SANTA MONICA MALIBU UNIFIED SCHOOL DISTRICT
SANTA MONICA HIGH SCHOOL
FACILITIES USE AGREEMENT – Barnum Hall Performance**

This **FACILITIES USE AGREEMENT** (this “Agreement”) is made and entered into by and between **SANTA MONICA MALIBU UNIFIED SCHOOL DISTRICT** (“SMMUSD”) and _____ (“Tenant”).

RECITALS

A. SMMUSD warrants that it is the owner of the land (the “Property”) in the City of Santa Monica, County of Los Angeles, State of California, commonly known as Santa Monica High School. SMMUSD is fully authorized to enter into this agreement and has the right to grant Tenant the use of the Property with each and all of the rights herein granted.

B. The Tenant desires to enter into this Agreement for the use of Facilities and SMMUSD desires to enter into this Agreement to permit the use of the Facilities by Tenant, upon the terms, provisions and conditions set forth below.

NOW THEREFORE, in consideration of the covenants and agreements of the parties set forth in this Agreement, and for other good and valuable consideration, the receipt and sufficiency of which are hereby acknowledge, the parties agree as follows:

PERMIT TO USE FACILITIES

1. PREMISES: SMMUSD hereby leases to Tenant and Tenant hereby leases from SMMUSD the following portion of the Property on SMMUSD’s Santa Monica High School’s (Samohi) campus (hereafter referred to as the “Facilities”):

- _____
- _____

[Please refer to Exhibit A: Estimate of Charges for more details]

SMMUSD grants the right to use the above listed facilities along with access to and egress from said Facilities with Tenant’s personnel, audiences and equipment within the Scope of Use detailed below.

- A. Tenant acknowledges that it has examined Premises and knows the condition thereof, and represents to SMMUSD that Premises are suitable for Tenant’s needs.
- B. Use of other structures, rooms or spaces on the Property is not permitted under this agreement. Additional use must be contracted with a separate agreement or a signed rider attached to this agreement. This agreement shall not be construed to create any expressed or implied right use or contract use of any additional space not specified.
- C. Except for the use of the Facilities during the term, SMMUSD retains the exclusive right to use all other buildings, facilities and equipment on the Property concurrent with the Tenant’s use of the Facilities. Tenant hereby acknowledges that during its use of the Facilities, the SMMUSD administrators, teachers, students, parents, guests and/or contractors (the “SMMUSD Users”) may be present on the Property and shall have the right to enter upon and use any aspect of the Property that is not designated as the Facilities. SMMUSD shall use reasonable efforts to ensure Tenant’s exclusive use of the Facilities during the

term. However, Tenant hereby agrees and acknowledges that SMMUSD makes no representation or warranty that, the SMMUSD Users presence on, or use of, the Property will not interfere with any aspect of Tenant's use of the Facilities.

2. SCOPE OF USE. Tenant will use the Premises to _____. Tenant shall not use or permit Premises to be used for any other purpose without SMMUSD's prior consent.

3. TERM: Tenant shall rent Premises on the following days and times:

<u>LOCATION</u>	<u>DATE</u>	<u>TIMES</u>
-----------------	-------------	--------------

Load-in:

Rehearsal(s):

Performance:

Load-Out:

Immediately following the performance

[Please refer to Exhibit A: Estimate of Charges for more details]

- A. The Term of use the Facilities will be guaranteed when this Agreement is fully signed and its requirements are met. A reservation of calendar dates shall not be confirmed until this Agreement is fully executed and the Rental Fee and estimate of charges is paid according to the Payment Schedule below.
- B. The Standard Rental Day is a 14 hour day. If the use extends past 14 hours in a single day, the Tenant will pay an overtime rate of one tenth the rental rate per hour for every hour that exceeds the fourteen hours.
- C. The Tenant shall have no right to use the Facilities for any purpose whatsoever prior to the commencement date/time or termination date/time specified in this agreement. If the Tenant has not vacated the Facilities and the Property at the expiration of the Term, The Tenant shall be charged and shall pay to SMMUSD a \$10,000 for each day or partial day that the Tenant does not fully vacate the Property. This section shall not be construed to create any expressed or implied right to holdover beyond the expiration of the Term or any extension thereof.
- D. A rehearsal may not, by definition, include more than 25 people in the audience section without prior approval of the Theatre Operations Manager. A rehearsal in violation of this standard shall be deemed and charged as a performance.

4. RENTAL FEE AND OTHER CHARGES: Tenant agrees to pay SMMUSD in immediately available U.S. federal funds the total sum of \$_____ as enumerated in Exhibit A as a Rental Fee for Facilities and estimate of services.

- A. Payment Schedules:
 - 1. *The event is contracted a month or less prior to the event:* The entire Rental Fee and estimate of services is due upon signing of this agreement.
 - 2. *The event is contracted from one to three months prior to the event:* On half of the Rental Fee and estimate of services is due upon signing of the agreement. The second half of the Rental Fee and estimate of services must be received five business days prior to the commencement of the Term.

3. *The event is contracted more than three months prior to the event:* One third of the Rental Fee and estimate of services is due upon signing of the contract. The second third of the Rental Fee and estimate of services must be received three months prior to the event. The final third of the Rental Fee and estimate of services must be received five business days prior to the commencement of the Term.
 - B. The TERM shall not commence if the entire Rental Fee and estimate of services have not been received in full by SMMUSD.
 - C. If the Tenant fails to pay the Rental Fee and estimate of services according to the payment schedule, SMMUSD shall have the right to terminate this Agreement and retain any prepaid amount as liquidated damages.
 - D. The Tenant may terminate this agreement at anytime. In such event, all rental fees previously paid by Renter to SMMUSD shall be deemed non-refundable and shall be retained by SMMUSD. The only exception is in case of DESTRUCTION OF THE PROPERTY, Paragraph 21.

5. **SECURITY DEPOSIT:** A refundable Security Deposit in the amount of **Twenty – Five Hundred Dollars (\$2500)** shall be required as part of this Agreement. The Tenant shall deliver to SMMUD the Security Deposit at least five business days prior to the commencement of the Term in immediately available U.S. Federal funds. The Security Deposit shall be held by SMMUSD as security for the full and faithful performance by The Tenant of all of the terms, covenants and conditions of this Agreement to be performed by the Tenant during the Term. If the Tenant defaults with respect to any of its obligations under this Agreement, SMMUSD may (but shall not be required to) use, apply or retain all or any part of the Deposit for the payment of any sum in default, or for the payment of any other amount, loss or damage which SMMUSD may spend, incur or suffer by reason of The Tenant's default. SMMUSD shall not be required to keep the Security Deposit separate from its general funds, and The Tenant shall not be entitled to interest on the Security Deposit. If the Tenant shall fully and faithfully perform every provision of this Agreement, the Security Deposit or any balance thereof shall be returned to the Tenant within thirty (30) days following the Termination Date, provided that SMMUSD may retain all or a portion of the Deposit until such time as any amount due from the Tenant in accordance with this Agreement has been determined and paid in full by the Tenant.

INDEMNIFICATION AND LIABILITY

6. **INDEMNIFICATION:** The Tenant shall indemnify, defend and hold harmless SMMUSD and its board, staff, officers, directors, employees, consultants, contractors, agents and other representatives from any and all liabilities, losses, damages, costs, expenses (including all attorneys' fees, costs and expenses), causes of action, suits, claims, demands or judgments of any nature or any kind whatsoever to which SMMUSD may be exposed or that SMMUSD may incur in connection with (a) The Tenant's use of the Facilities and the Property, (b) any aspect of the Event, including, but not limited to the Participant's use of the Facilities and the Property, transportation to or from the Property and the overall public safety of the Participants and any other persons that may come into contact with or otherwise interact with the Participants (whether on the Property or elsewhere) or (c) the failure of The Tenant to comply with the terms of this Agreement. Notwithstanding the foregoing, the Tenant shall indemnify, defend and hold SMMUSD harmless irrespective of the cause of the Loss or Losses that arise in connection with

subparts (a), (b) or (c) above (*i.e.* regardless of whether or not such Loss is caused by an act or omission, willful misconduct or negligence, whether active or passive, of The Tenant, or otherwise), except to the extent such Loss or Losses are caused by the gross negligence or willful misconduct of the SMMUSD. The indemnification obligations set forth in this Section 9 shall survive the termination of this Agreement.

7. **LIABILITY INSURANCE:** At least five (5) business days prior to the Commencement Date, the Tenant shall furnish written certificates evidencing the insurance required pursuant to this Agreement. The Tenant shall, at its sole cost and expense, maintain for the entire term of this Agreement, the following insurance in the following amounts:

A. General Public Liability Insurance insuring against claims (on a per occurrence basis) for bodily injury, death or property damaging occurring, on, in or about the Property and/or the Facilities and the adjoining streets, sidewalks, passageways, parking lots, driveways and walkways, restrooms and other areas of the Property, including contractual or assumed liability, products liability and completed operations in the minimum amount of \$1,000,000 per occurrence and \$2,000,000 aggregate.

B. Worker's Compensation Insurance in the minimum California statutory limits covering all persons employed in connection with any work done on or about the Property or for the Tenant for which claims for death or bodily injury could be asserted against SMMUSD, the Tenant or the Property.

C. Any other form or forms of insurance as SMMUSD may reasonably require, in form, amounts and for risks against which a prudent sponsor of conferences open to the general public would protect itself.

D. All insurance policies shall be issued by an insurance company with a rating of not less than "A" Class X in the latest edition of Best's Insurance Guide. SMMUSD shall be named as an additional insured party on all liability policies (including any umbrella policy) obtained by the Tenant for liabilities relating to the Facilities, the Property and the Conference. All policies shall provided that said policy is primary and any insurance carried by SMMUSD is secondary and shall include a provision that requires prior written notice to SMMUSD of any cancellation, modification, amendment, expiration or reduction in coverage at least thirty (30) days before such modification, amendment, expiration or reduction in coverage shall take affect.

E. Failure to obtain such liability policies or to submit certificates evidencing such policies and SMMUSD's coverage hereunder at least five (5) business days prior to the Commencement Date shall constitute a material breach of this contract and shall entitle SMMUSD to cancel this agreement upon written notice to the Tenant in accordance with Section 27.

USE OF FACILITIES

8. **CONDITION OF FACILITIES:** The Tenant hereby represents, covenants and warrants that, as a material inducement to the execution and delivery of this Agreement by the SMMUSD, it accepts the Property and the Facilities in its "AS-IS", "WHERE-IS", "WITH ALL FAULTS" physical condition and in an "AS-IS", WHERE-IS", "WITH ALL FAULTS" state of repair, and SMMUSD has no obligation to repair or improve the Facilities or the Property in anticipation of or in connection with the Tenant's exercise of its rights under this Agreement, nor shall the Tenant or anyone claiming by, through or under the Tenant, including without limitation, the

Participants, shall have any right or remedy against SMMUSD as a result of any physical condition of the Property or the Facilities (including, without limitation, any defect in or to the Property or the Facilities). The Tenant hereby further represents, covenants and warrants that neither SMMUSD nor anyone acting on SMMUSD's behalf has made any representation, warranty or other guarantee regarding the fitness of the Facilities for the particular use desired by the Tenant.

A. SMMUSD represents and warrants, to our knowledge, that there are no hazardous materials located in, on or around the Facilities.

B. The Tenant hereby generally, fully and irrevocably releases SMMUSD, its employees, agents or other representative from any and all claims that the Tenant may now have or hereafter acquire against SMMUSD, its agents, employees, independent contractors or other representatives for and from any cost, loss, liability, damage, expense, action or cause of action, whether foreseen or unforeseen, known or unknown, arising out of or related to the property or facilities (including, without limitation, any patent, latent or other defects in the property or the physical or environmental condition of the property or the facilities).

With respect to the releases and waivers set forth in this section, the Tenant expressly waives the benefits of section 1542 of the California Civil Code, which provides as follows:

A GENERAL RELEASE DOES NOT EXTEND TO CLAIMS WHICH THE CREDITOR DOES NOT KNOW OR SUSPECT TO EXIST IN HIS OR HER FAVOR AT THE TIME OF EXECUTING THE RELEASE, WHICH IF KNOWN BY HIM OR HER MUST HAVE MATERIALLY AFFECTED HIS OR HER SETTLEMENT WITH THE DEBTOR."

9. PREPARATION OF FACILITIES. Except as otherwise expressly provided in this Agreement, SMMUSD shall not be responsible for the planning, advertising, marketing, setup and preparation of the Facilities, security, public safety services, admissions and admission/credential control, crowd control, speaker, performance or entertainment bookings, catering, food and beverage service, lighting, audio-visual services or any other aspect of the Conference. If the Tenant requires such services from SMMUSD, the Tenant shall pay to SMMUSD all costs and expenses incurred by SMMUSD for such work. The Tenant hereby agrees and acknowledges that SMMUSD's sole responsibility under this Agreement is to provide the Tenant with access to the Facilities during the Term and except as otherwise expressly provided herein. The Tenant hereby represents, covenants and warrants that it is solely responsible for each and every aspect of the Event (with the exception of access to the Facilities), including, but not limited to, the advertising, marketing, setup and preparation of the Facilities, booking of entertainment, speakers and performers, catering, food and beverage, security, public safety, insurance and all necessary goods and equipment, including, but not limited to tables, chairs, kiosks, catering equipment, audio-visual equipment and any other equipment necessary for the Event. The Tenant shall take all appropriate and necessary actions to protect the Facilities and any personal property or equipment located thereon from damage of any type and

shall comply with all requests made by SMMUSD with regard to the protection of the Facilities and any personal property or equipment located thereon.

10. **ALTERATION OF FACILITIES:** Tenant shall not make, or cause to be made, any alterations, additions or improvements to or of Premises, or any part of equipment thereof, without SMMUSD prior written consent. In the event that SMMUSD consents to the making of any alterations, additions or improvements to Premises by Tenant, such alterations, additions or improvements shall be made by Tenant at Tenant's sole cost and expense. In addition, Tenant shall return Premises to its original condition, at Tenant's expense, within the Term of this Agreement at Tenant's sole expense.

11. **RESTORATION OF FACILITIES:** The Tenant shall leave said Facilities in substantially as good condition as when received by it excepting reasonable wear and tear and use of said Facilities for the purposes herein permitted; and Lessee shall remove all of Lessee's sets, structures and other material and equipment from said Premises. The Tenant, at Tenant's expense, shall immediately restore to its prior condition any damage to SMMUSD's property caused by the Tenant on or about the Property. SMMUSD agrees to execute a location restoration release as may be required by the Tenant in the Tenant's favor upon the Tenant's restoration of the premises.

a. **Abandoned Equipment:** The Tenant shall remove all sets, structures and other material and equipment from said Facilities. Unless otherwise agreed to by the parties in writing, any equipment or furnishings of the Tenant which are left at the Property or Facilities for more than 48 hours after the expiration of the Termination Date, shall be deemed abandoned by the Tenant and may be disposed or used of by SMMUSD in its sole and absolute discretion. The Tenant will be responsible for any fees incurred due to the disposal of Abandoned Equipment.

12. **MACHINERY, FLAMMABLE MATERIALS AND EQUIPMENT:** The Tenant shall abide by the following safety requirements:

A. The Tenant shall not erect any engine, motor or other machinery on Premises or use any gas, electricity, flammable liquid, candles, or charcoal without prior written approval of the Theatre Operations Manager or his designated representative, which consent shall be granted in its sole and absolute discretion. All such devices and effects must be permitted in accordance with all city, county, state and national laws.

B. As a rule the Tenant shall not, and shall strictly prohibit, use, exhibit or lighting of fireworks, explosive or open flames (including burning candles) anywhere on the Property. Permission for use will be granted in writing solely by the Theatre Operation Manager after consideration of all safety concerns and approval by the Fire Department, Police Department or any other required public safety approval.

C. All Special Effects that have any possibility of injuring any persons or damaging any equipment or facilities must be approved in writing by the Theatre Operations Manager or his designated representative, which consent shall be granted in its sole and absolute discretion.

D. All Electrical connections in the Facility between house power and equipment exceeding 120v must be approved by the Theatre Operations Manager and if necessary a certified electrician.

- E. The Tenant shall not erect, connect or attach any decorative scenery or other materials to any facilities so as to damage any of the Facilities without the prior written approval of the Theatre Operations Manager or his designated representative, which consent shall be granted in its sole and absolute discretion. Barnum Hall's House Staff reserves the right to prevent the hanging of materials deemed unsafe in any way.
- F. Any and all scenery or decorative material shall be of a noncombustible type or be suitably treated with a flame retardant as defined in Section 13115 of the Health and Safety Code of the State of California. The Tenant must have flame retardant certificates on hand for all such materials.
- G. All Barnum Hall technical equipment, including but not limited to lighting, sound, rigging and stage mechanics, must be operated by Barnum Hall's house personnel or personnel approved by the Theatre Operations Manager. Barnum Hall's house staff reserves the right to prevent the hanging of materials deemed unsafe in any way as determined by the Barnum Hall house staff.
- H. The Tenant agrees and acknowledges that all amplified sounds are under the sole and absolute authority of the Theatre Operations Manager or his designated representative. Sound levels shall not exceed 98DB.
- I. Animals are prohibited from being on the property, with exception of service animals. Permission to use them as part of the event must be received in writing prior to the Event by the Theatre Operations Manager or his designated representative, which consent shall be granted in its sole and absolute discretion.

13. CONCESSIONS/ LOBBY SALES OF SOUVENIR AND PROGRAMS: SMMUSD retains the right to provide exclusive concession service. The items served and prices charged shall be at the discretion of SMMUSD. All concession fees belong to, and are reserved by and for the sole benefit and use of SMMUSD.

Programs, records, tapes, and other similar media, may be sold if they relate to the performance and are sold in conjunction with Tenant's event. All such sales are subject to a payment of 10% of the gross receipts to SMMUSD. Tenant is responsible for payment of applicable sales taxes. All items to be sold must have SMMUSD's prior approval.

Catering service may be arranged by Tenant, subject to prior approval by SMMUSD Theatre Operations Manager. Tenant will be charged for clean-up of food preparation and serving areas as necessary. The dispensing or sale of alcoholic beverages is strictly prohibited.

Food and Drink are strictly prohibited in Barnum Hall and the Lobby. The only exception is the Green Room.

14. PARKING: SMMUSD retains the right to either provide exclusive parking service or to rent the available parking to the Tenant for the Event. All parking fees belong to, and are reserved by and for the sole benefit and use of SMMUSD.

PERSONNEL

15. THEATRE OPERATIONS MANAGER: The Facilities shall at all times be under the control of the SMMUSD Theatre Operations Manager or a designated representative. The Theatre Operations Manager and/or his representative must be present at all times the facilities are occupied. He will be the official representative of SMMUSD in all areas regarding this agreement and the use of the space.

A. The Theatre Operations Manager will be responsible for calling and hiring the technical personnel requested by Tenant, and SMMUSD reserves the right to call and hire the number of personnel SMMUSD deems necessary for a particular event. SMMUSD reserves the right to operate any and all of its own equipment.

B. The Theatre Operations Manager reserves the right to permit designated SMMUSD employees to enter the Facilities at all times and to require, without charge, a reasonable number of tickets, admission passes or other necessary credentials to facilitate the operation of the event.

16. **TECHNICIANS, SECURITY, CUSTODIANS and MAINTENANCE:** SMMUSD has the right and responsibility to designate SMMUSD personnel to be required to support the event. The number and type of personnel required for the event and the cost to the Tenant are detailed in Exhibit A.

ADVERTISING, COPYRIGHT, FILMING AND BROADCAST

17. **ADVERTISING:** Tenant shall not advertise any performances or the appearance of any performer on Premises unless agreements between all parties involved have been properly executed and provided to SMMUSD.

A. Tenant shall not use the name of the Barnum Hall, Samohi, SMMUSD High School, or SMMUSD in any way other than as the location for a particular event. Upon request by SMMUSD the words "this event is not connected with or sponsored by SMMUSD," shall be printed on all advertising material.

B. Signs may be posted on bulletin boards provided for such use, upon the prior approval of SMMUSD's Theatre Operations Manager. Signs may not be placed anywhere else on the Property without SMMUSD's prior consent. Advertising material which does not pertain completely to the immediate attraction may not be circulated on the Property. Under no circumstances may advertising material be circulated on parking facilities or walkways adjacent to Property.

18. **COPYRIGHT LICENSE:** The Tenant shall secure, at its sole cost and expense, all applicable copyright licenses. The Tenant shall indemnify, defend and hold SMMUSD harmless from all claims of copyright violation of any kind in connection with the Tenant's use of the Facilities and Property. The indemnification obligations of this section shall survive the termination of this Agreement.

19. **FILMING RIGHTS:** There shall be no filming or recording other than for archival purposes. SMMUSD reserves and retains all commercial broadcasting, television, recording, and filming rights for its own benefit. Commercial filming requires a separate agreement or a special rider attached to this agreement. Tenants who choose to videotape their programs for their own educational use must also sign a separate rider.

A. Tenant grants permission to SMMUSD to photograph the event and use the photographs for promotional and archival purposes.

GENERAL PROVISIONS

20. **ASSIGNMENT AND SUBLETTING:** Tenant shall not voluntarily, or by operation of law, assign or transfer this Rental Agreement or any interest therein, and shall not sublet Premises or any part thereof without SMMUSD's prior consent.
21. **DESTRUCTION OF PREMISES; FORCE MAJEURE:** In the event that Premises are unavailable for use due to partial or total destruction, acts of nature, strikes, action by governmental agencies, force majeure or for any other reason beyond the exclusive reasonable control of SMMUSD, SMMUSD shall have the right to terminate this Agreement by refunding all deposits due Tenant. If possession or use of the facility has begun, the rental and other charges shall be prorated.
22. **ATTORNEY'S FEES:** In the event that either party shall retain the service of an attorney to enforce the terms of this Agreement, the prevailing party shall be entitled to reasonable attorney's fees and costs, including the costs of corporate staff counsel, and interest thereon at the prevailing legal rate.
23. **SEVERABILITY:** Any provision of this Agreement which shall prove to be invalid, void or illegal shall in no way affect, impair or invalidate any other provision hereof and such other provision shall remain in full force and effect.
24. **CHOICE OF LAW:** This Agreement shall be governed by, and construed under, the laws of the State of California.
25. **RELATIONSHIP OF PARTIES:** Nothing in this Agreement shall be construed as creating between the parties hereto a partnership or joint venture, nor to make SMMUSD liable in whole or in part for any obligation that may be incurred by Tenant in carrying out any of its obligations under the provisions of this Agreement.
26. **COMPLIANCE WITH LAW AND RULES:** Tenant shall not use Premises or permit anything to be done in or about Premises which will in any way conflict with any law, statute, ordinance or governmental rule or regulation now in force or which may hereafter be enacted or promulgated.
- A. Any performer or any other person whose conduct is objectionable, disorderly or disruptive to the use of the facility or in violation of any law shall be refused entrance and shall be immediately ejected from Premises. Tenant shall defend, indemnify and hold SMMUSD harmless for any claim resulting from such action.
- B. Smoking is not permitted on campus. **No alcoholic beverages, non-prescription or illegal drugs or substances, unlawful or inappropriate language. Examples of behavior and/or language that are inconsistent with SMMUSD standards include, but are not limited to, language that demeans and exploits women or any racial or minority groups, excessive profanity or explicit lyrics, and/or excessive references to sex, alcohol, and narcotics/drugs.**
- C. Tenant assumes the responsibility of obtaining any necessary permits or licenses required by law, and shall permit inspection by appropriate governmental departments.

27. DEFAULT/REMEDIES: Subject to the terms and conditions of this Agreement, if the Tenant fails to perform any material term, covenant or condition of this Agreement, or otherwise breaches this Agreement, and such failure or breach continues for more than three (3) days after delivery of written notice from SMMUSD to the Tenant, and the Tenant fails within three (3) days after delivery of written notice of such breach or default from SMMUSD, to cure such default, SMMUSD may, at its option and without any further demand terminate this Agreement and/or exercise any other right or remedy available at law or in equity.

A. Notwithstanding, the Theatre Operations Manager has the immediate authority to curtail or terminate any activity that might result in personal harm or permanent damage to the facility.

B. In addition to the foregoing, SMMUSD shall have the self-help right to cure such defaults at the Tenant's expense and SMMUSD shall be entitled to recover from the Tenant all costs and expenses incurred as a result of the default including, but not limited to, thereon interest at the rate of ten (10%) percent per annum from the date of such costs and expenses until repaid by the Tenant to SMMUSD. The remedies set forth herein shall be exclusive and SMMUSD may exercise one or more of said remedies in its sole and absolute discretion.

C. Notwithstanding the foregoing, the Tenant's failure to pay the Use Fee in accordance with the terms of Section 4 shall not be subject to the cure provided in this Section and in the event of such breach SMMUSD shall have the right to immediately terminate this Agreement without any prior notice or opportunity to cure.

D. Upon termination of this Agreement, pursuant to this Section, if the Tenant is in occupancy of the Facilities, the Tenant shall promptly vacate the Facilities and the Property and shall forfeit all rights under this Agreement including any rights to monies due to, from or paid to SMMUSD in the form of use fees, rents, charges, and/or deposits.

E. In no event shall SMMUSD be responsible for any losses, including without limitation, any revenues, profits, costs, expenses, deposits or other fees, costs and expenses earned or accrued by the Tenant, whether in connection with the Conference or otherwise, as result of such termination.

F. SMMUSD shall not be subject to legal action or liable for damages in the event that Tenant is in material default hereunder.

ENTIRE AGREEMENT: This Agreement shall be considered the entire agreement between the parties.

AGREED:

TENANT:

BY: _____ Date: _____

USER INFORMATION:

Name of Organization:

EIN or SSN:

Authorized Official:

Address:

City/State/Zip:

Telephone/Fax:

SMMUSD

BY: _____ Date: _____

GUIDELINES FOR USE OF BARNUM HALL AND THE GREEK THEATRE

The Memorial Theatre (The Greek) was dedicated May 30, 1921; the WPA built Barnum Hall in 1937. Both of these facilities were designed to be cultural magnets for the community.

A. SCHEDULING

1. The school will have sole use of Barnum Hall and the Greek Theatre during the regular school year during the regular school day. Only in rare instances will a non-school event be using Barnum or the Greek Theatre during the school day, and then, only after approval by the principal or designee.
2. The Theatre Operations Manager (TOM) can book Barnum Hall or the Greek Theatre during all other times; taking into account Samohi's staff needs per item B.2 below.
3. The Theatre Operations Manager will be in charge of the calendars for Barnum Hall and the Greek Theatre and will work closely and in a timely manner with the designated Samohi administrator to schedule uses of the venues for all school events.
4. Samohi staff will determine their needs and work with the designated site administrator to complete their Student Activities Permits and reserve dates for use well in advance well in advance of any anticipated need.
5. The designated site administrator will work closely with the Theatre Operations Manager to insure that dates needed for school-sponsored events (those proposed by site staff as part of their curriculum, school assemblies, pep rallies, or special events) are properly secured on the calendar. (See B.2, below)
6. School staff needs to become sensitive to the issue that Barnum Hall or Greek Theatre renters often want the same dates from year-to-year. For example, a group will consistently want the first weekend before Thanksgiving. As this time has not previously been regularly used by school staff, it is reasonable that the TOM can guarantee this time to a renter more than one year out. This is a regular, customary, accepted and expected procedure for renting venues like Barnum Hall and the Greek Theatre.
7. A complete, up-to-date online calendar of both venues will be accessible for viewing by the public.
8. The Theatre Operations Manager will maintain a planning calendar for up to four years in advance. Non-school-sponsored users can secure dates for up to two years in advance by paying the required deposit. Dates for which a deposit has been received cannot be changed to accommodate school events. School-sponsored events may also be secured up to two years in advance.
9. In the rarest of situations where more than one group applies to use a facility at the same time for the same date, the TOM will decide which applicant group offers the greatest benefit to the students and select that one.

B. TYPES OF USES

1. There are three types of users of Barnum Hall and the Greek Theatre: school/district users, nonprofit users and for-profit users.
2. For school-sponsored events in Barnum Hall/Greek Theatre during non-school hours, the designated site administrator will reserve the venue with the Theatre Operations Manager; this makes the District the insurer for all liability for the event.
 - a. The school shall pay for any additional staff requirements, overtime, supplies, etc. connected with the event.
 - b. For school-sponsored events when "admission fees are charged or contributions are solicited" shall have those funds paid directly to a 501(c)3 nonprofit organization that is raising funds for the welfare of the pupils of the district or other charitable purposes, no fee for the use of the facility shall be charged. There will be a \$100.00 asset replacement charge per performance-day that will be paid into the appropriate Barnum Hall Account. The school will pay for necessary security and custodial or other staff relevant to the production/rehearsal of the event.
 - c. For school-sponsored events when "admission fees are charged or contributions are solicited" funds must be collected by appropriate district personnel and deposited into district accounts according to general accounting principles and District policies, no fees for the use of the facility shall be charged. There will be a \$100.00 asset replacement charge per performance-day that will be paid into the appropriate Barnum Hall Account. The school will pay for necessary security and custodial or other staff relevant to the production/rehearsal of the event.
3. For all other users, non-profit or for-profit organizations, appropriate established fees shall be charged.

C. DUTIES

1. The TOM will oversee the use of all the equipment in Barnum Hall and work with site staff to position equipment as needed, including the shell.

Approved:  Date: 11/30/06
Timothy Walker, Chief of Staff

RENTAL RATES FOR BARNUM HALL AND THE GREEK THEATRE

EFFECTIVE JULY 1, 2006 (approved 8/31/06) rev. 11/28/06

BARNUM HALL

RENTAL RATES

THEATRE RENTAL: Rent is per day. A day may include load-in or load-out, rehearsals, technical work or any number of performances.

Non-Profit \$1,600 per performance day (one performance per day)
 \$2,400 per performance day (two performances per day)
 \$800 per school day performance
 \$800 per rehearsal/technical day
 \$120 piano tuning

Commercial Rent \$3,200 per day

Commercial Meeting Rate – 4 hour rate \$1,200

*Asset Replacement Charge – Pro rated based on the proportionate use of Barnum Hall
Equipment between Samohi student and outside community/commercial events.
Minimum \$100/performance day.*

Film/TV recording \$5,000 per day

Included in rent: Dressing room space, all in-house lighting equipment with basic house hang, basic sound system (certain microphones restricted), basic AV equipment to include screen, LCD projector, and rear screen projector, and crew as designated in rental contract.

PERSONNEL

- Personnel are paid by the hour, beginning with the first hour of each rental. Rates are as follow:
- *Regular Time:* the first 8 hours in any day up to forty hours in any week. A day is from 8 am to midnight.
- *Overtime:* Paid at 1.5 times regular rate for any hours over eight in one day, or over forty cumulative hours in one week.
- *Double Time:* Paid at 2 times the regular rate for any hours between 12:01 am and 7:50 am, or any hours over twelve hours in one day.

Staffing is at the sole discretion of the Theatre Operations Manager. Due to insurance requirements, renter-supplied stage personnel will be accepted at the sole discretion of the Theatre Operations Manager. The following rates shall be adjusted according to the current salary rate for these positions (as of 11/01/06):

Theatre Operations Manager	\$50 per hour
Student Crew	\$12 per hour
Security	\$46.95 per hour
Custodial	\$51.73 per hour
Technical (A/V)	\$37.71 per hour

TO: BOARD OF EDUCATION

DISCUSSION

8/23/07

FROM: DIANNE TALARICO / TIMOTHY R. WALKER / LAUREL SCHMIDT

RE: NEW POLICY 4258 - EMPLOYEE SECURITY

DISCUSSION ITEM NO. D.03

It is recommended that the Board of Education adopt Board Policy 4258 - Employee Security, as recommended by CSBA. This is a new policy that contains language regarding the possession of pepper spray by employees on school property and at school activities.

Background:

On August 9, 2007, the board adopted a policy prohibiting the possession of pepper spray by students. At the same time, the board requested a policy that would address possession by employees. The attached CSBA sample policy provides three options related to the possession of pepper spray.

Attachment:

- CSBA Sample Policy 4258 - Employee Security

***** ***** ***** ***** ***** *****

The board requested staff receive input from employees regarding the options for pepper spray. Once this input has been received, the policy will come back to the board for action.

**CSBA Sample
Board Policy**

BP 4258

Personnel

Employee Security

Note: Pursuant to Government Code 3543.2, safety conditions in employment are a mandatory subject of collective bargaining.

The Governing Board desires to provide a safe, orderly working environment for all employees. As part of the district's comprehensive school safety plan, the Superintendent or designee shall develop strategies for protecting employees from potentially dangerous persons and situations and for assisting them in the event of an emergency situation.

The Superintendent or designee shall ensure that employees are informed, in accordance with law, regarding crimes and offenses by students who may pose a danger in the classroom.

***Note: Code of Civil Procedure 527.8 provides that employers may seek temporary restraining orders and injunctions on behalf of an employee against individuals who pose a credible threat of violence to the safety of an employee in the workplace. Penal Code 601 makes it illegal for someone who has made such a threat to enter the threatened person's workplace, within 30 days of the threat, seeking to locate that person without lawful purpose and in order to execute the threat. ***

When violence is directed against an employee by any individual and the employee so notifies the Superintendent or designee, the Superintendent or designee shall take steps to ensure that appropriate legal measures are instituted. When the employee notifies the Superintendent or designee of a threat of bodily harm, the district shall take appropriate measures to enable the employee to request assistance if a threat occurs on school grounds.

The Superintendent or designee shall ensure that employees are trained in crisis prevention and intervention techniques in order to protect themselves and students. Staff development may include training in classroom management, effective communication techniques and crisis resolution.

***Note: Education Code 32225-32226 expresses the Legislature's intent that two-way communication devices be installed in each classroom of grades K-12, including portables, if federal funding becomes available for this purpose. The following

optional paragraph is offered for districts that wish to provide communications devices (e.g., telephones, walkie-talkies, personal alert transmitters) at the present time.***

The Board recognizes that access to two-way communications devices allows employees to call for assistance from their supervisor or law enforcement in the event of a threat of violence or medical emergency. The district shall provide such communications devices in classrooms to the extent possible.

***Note: The following options are related to the possession of pepper spray. Penal Code 12403.7 authorizes adults, with certain exceptions, to carry for purposes of self-defense an approved tear gas weapon in which the active ingredient is oleoresin capsicum, a peppery-type substance which causes physical discomfort when discharged on a sensitive part of the body. Penal Code 626.9 and 626.10, which prohibit the possession of weapons on school grounds, do not prohibit the possession of pepper spray on school grounds. ***

OPTION 1: Employees may possess a pepper spray weapon that meets the requirements of Penal Code 12403.7 on school property and at school activities for their own safety. Any employee who is negligent or careless in the possession or handling of pepper spray shall be subject to appropriate disciplinary measures.

OPTION 2: Employees may possess a pepper spray weapon that meets the requirements of Penal Code 12403.7 on school property when students are not present. On a case-by-case basis, the Superintendent or designee may allow such possession when students are present if justified by unusual dangerous circumstances. Any employee who is negligent or careless in the possession or handling of pepper spray shall be subject to appropriate disciplinary measures.

OPTION 3: Employees may not carry or possess pepper spray on school property or at school activities. On a case-by-case basis, however, the Superintendent or designee may allow the possession of a pepper spray weapon that meets the requirements of Penal Code 12403.7 when justified by unusual dangerous circumstances. Any employee who is negligent or careless in the possession or handling of pepper spray shall be subject to appropriate disciplinary measures.

Reporting of Injurious Objects

***Note: The following optional section specifies actions to be taken in the event an employee becomes aware that any person is in possession of an injurious object. The actions listed below are consistent with the actions an employee may take when students are in possession of injurious objects; see AR 5131.7 -

Weapons and Dangerous Instruments. In some instances, employees or students may be authorized to carry pepper spray or weapons on school grounds; see BP/AR 5131.7 - Weapons and Dangerous Instruments.***

The Board requires school employees to take immediate action upon being made aware that any person is in possession of an injurious object on school grounds or at a school-related or school-sponsored activity. The employee shall use his/her own judgment as to the dangerousness of the situation and, based upon this analysis, shall do one of the following:

1. Confiscate the object and deliver it to the principal immediately
2. Immediately notify the principal, who shall take appropriate action
3. Immediately notify the local law enforcement agency and the principal

When informing the principal about the possession or seizure of a weapon or dangerous device, the employee shall report the name(s) of persons involved, witnesses, location, and the circumstances of any seizure.

***Note: Education Code 49334 provides that school employees who notify law enforcement regarding students or adults who are in possession of injurious objects while on school grounds or under the jurisdiction of school personnel are immune from prosecution. ***

Legal Reference:

EDUCATION CODE

32210-32212 Willful disturbance, public schools or meetings

32225-32226 Communication devices

35204 Contract with attorney in private practice or use of administrative advisor

35205 Contract for legal services

35208 Liability insurance

35213 Reimbursement for loss, destruction or damage of school property

44014 Report of assault by pupil against school employee

44807 Duty concerning conduct of students

48201 Transfer of student records

48900-48926 Suspension or expulsion Grounds for suspension or expulsion

49079 Notification to teacher; student who has engaged in acts constituting grounds for suspension or expulsion

49330-49335 Injurious objects

CIVIL CODE

51.7 Freedom from violence or intimidation

CODE OF CIVIL PROCEDURE

527.8 Workplace violence safety act

GOVERNMENT CODE

995-996.4 Defense of public employees
3543.2 Scope of representation
PENAL CODE
71 Threatening public officers and employees and school officials
240 Definition of assault
241.2 Assault on school or park property against any person
241.3 Assault against school bus drivers
241.6 Assault on school employee includes board member
242 Definition of battery
243 Battery; definition of "injury" and "serious bodily injury"
243.2 Battery on school or park property against any person
243.3 Battery against school bus drivers
243.6 Battery against school employee includes board member
245.5 Assault with deadly weapon; school employee includes board member
290 Registration of sex offenders
601 Trespass by person making credible threat
626.9 Gun-Free School Zone Act of 1995
626.10 Exceptions to bringing weapons on school grounds
646.9 Stalking
12403.7 Weapons approved for self defense
WELFARE AND INSTITUTIONS CODE
827 Juvenile court proceedings; reports; confidentiality
828.1 District police or security department, disclosure of juvenile records

Management Resources:

CDE CORRESPONDENCE

0401.01 Protecting Student Identification in Reporting Injurious Objects

WEB SITES

CDE, Safe Schools and Violence Prevention Office:
<http://www.cde.ca.gov/spbranch/safety/safetyhome>
CSBA: <http://www.csba.org>

DATE OF LAST ACTION: (2/95 2/96) 7/01

TO: BOARD OF EDUCATION

DISCUSSION

08/23/07

FROM: DIANNE TALARICO / TIMOTHY R. WALKER /
LAUREL SCHMIDT

Previously

08/09/07

RE: NEW POLICY 5141 - HEALTH CARE AND EMERGENCIES

DISCUSSION ITEM NO. D.04

It is recommended that the Board of Education adopt Board Policy 5141 - Health Care and Emergencies, as recommended by CSBA. This is a new policy that contains updated language regarding student health and safety. It replaces BP 5141.11, 5141.12, 5141.13, and 5141.23.

Attachment:

- Board Policy 5141 - Health Care and Emergencies

THIS IS A **NEW POLICY**

New text in underline

Deleted text in ~~strikeout~~

<u>NUMBER</u>	<u>ARTICLE</u>	<u>TITLE</u>
<u>5141</u>	<u>Students</u>	<u>Health Care and Emergencies</u>

<u>SUBTOPIC</u>	<u>POLICY</u>	<u>REGULATION</u>	<u>EXHIBIT</u>
<u>Welfare</u>	<u>X</u>		

DETAIL

The Board of Education recognizes the importance of taking appropriate action whenever an emergency threatens the safety, health, or welfare of a student at school or during school-sponsored activities.

The Superintendent or designee (Health Services personnel) shall develop procedures to ensure that first aid and/or medical attention is provided as quickly as possible when student accidents and injuries occur and that parents/guardians are notified as appropriate.

The Superintendent or designee shall require parents/guardians to provide emergency contact information in order to facilitate communication in the event of an accident or illness.

District staff shall appropriately report and document student accidents.

Assistive Devices

Students who are required to temporarily use assistive devices at school such as casts, splints, canes, walkers, crutches, wheelchairs, etc. shall first present a letter from the prescribing doctor to the principal or Health Services designee that states the necessity for the student's use of the device, any restrictions and the length of time that the restrictions and devices will be necessary.

REFERENCE

Legal Reference:

EDUCATION CODE

32040-32044 First aid equipment

49300-49307 School safety patrols

49407 Liability for treatment

49408 Emergency information

49409 Athletic events; physicians and surgeons; emergency medical care; immunity

49470 Medical and hospital services for athletic program

49471 Medical and hospital services not provided or available

49472 Medical and hospital services for pupils

49474 Ambulance services
51202 Instruction in personal and public health and safety
CIVIL CODE
1714.21 Defibrillators; CPR; immunity from civil liability
FAMILY CODE
6550-6552 Caregivers
HEALTH AND SAFETY CODE
1797.196 Automatic external defibrillators, immunity from civil
liability
CODE OF REGULATIONS, TITLE 8
5193 California Bloodborne Pathogens Standard

MANAGEMENT RESOURCES

WEB SITES

American Heart Association: <http://www.americanheart.org>
American Red Cross: <http://www.redcross.org>
California Department of Health Services: <http://www.dhs.ca.gov>

ADOPTED

XXXXXXXX

REVISED

CSBA DATE

November 2005

TO: BOARD OF EDUCATION

DISCUSSION

08/23/07

FROM: DIANNE TALARICO / TIMOTHY R. WALKER /
LAUREL SCHMIDT

Previously

08/09/07

RE: DELETE POLICIES: 5141.11, 5141.12, 5141.13, 5141.23

DISCUSSION ITEM NO. D.05

It is recommended that the Board of Education delete the following health-related policies because the information they contain is either outdated, no longer applicable, or has been incorporated into the new Board Policy 5141 - Health Care and Emergencies:

1. BP 5141.11 Emergency Cards for Students (4/24/78)
2. BP 5141.12 Illness (4/24/78)
3. BP 5141.13 Ambulance at Events (4/24/78)
4. BP 5141.23 Communicable Disease Control (4/24/78)

Attached are Board Policies 5141.11, 5141.12, 5141.13, and 5141.23, the text of which has been stricken.

THIS POLICY TO BE **DELETED**

New text in underline
Deleted text in ~~strikeout~~

<u>NUMBER</u>	<u>ARTICLE</u>	<u>TITLE</u>		
5141.11	Students	Emergency Cards for Students		
<u>SUBTOPIC</u>	<u>POLICY</u>	<u>REGULATION</u>	<u>EXHIBIT</u>	
Welfare	*			

DETAIL

~~It is the policy of the Board of Education of the Santa Monica-Malibu Unified School District it be mandatory that a parent or guardian of a pupil submit within two weeks of enrollment, emergency information as outlined in Education Code, Section 49408.~~

REFERENCE

~~Cross-reference:
Health Manual
Legal Reference:
E.C. 49408~~

MANAGEMENT RESOURCES

<u>ADOPTED</u>	<u>REVISED</u>	<u>CSBA DATE</u>
April 24, 1978		

DISTRICT GOAL

THIS POLICY TO BE **DELETED**

New text in underline

Deleted text in ~~strikeout~~

<u>NUMBER</u>	<u>ARTICLE</u>	<u>TITLE</u>
5141.12	Students	Illness

<u>SUBTOPIC</u>	<u>POLICY</u>	<u>REGULATION</u>	<u>EXHIBIT</u>
Welfare	*		

DETAIL

~~It shall be the responsibility of employees of the District to be alert to the possibilities of pupils becoming ill while under the jurisdiction of the school. If a pupil does, in fact, become ill, the principal and school nurse should be notified immediately.~~

REFERENCE

~~Cross-reference:——
Health Manual
Elementary Principals Handbook
Policy Number 5141.4 — Emergency Card~~

MANAGEMENT RESOURCES

<u>ADOPTED</u>	<u>REVISED</u>	<u>CSBA DATE</u>
April 24, 1978		

DISTRICT GOAL

THIS POLICY TO BE **DELETED**

New text in underline

Deleted text in ~~strikeout~~

<u>NUMBER</u>	<u>ARTICLE</u>	<u>TITLE</u>		
5141.13	Students	Ambulance Services at Athletic Events		
<u>SUBTOPIC</u>	<u>POLICY</u>	<u>REGULATION</u>	<u>EXHIBIT</u>	
Welfare	*			

DETAIL

~~It is the belief of the Board of Education that the presence of a physician at all home football games is adequate protection for injured students and that ambulance service is readily available by telephone. It is therefore the policy of the Board of Education that the District shall not pay for the services of a standby ambulance.~~

REFERENCE

~~Legal Reference: _____~~

~~Education Code:~~

~~49470; 49474~~

MANAGEMENT RESOURCES

ADOPTED

~~September 9, 1974~~

REVISED

~~April 24, 1978~~

CSBA DATE

DISTRICT GOAL

THIS POLICY TO BE **DELETED**

New text in underline

Deleted text in ~~strikeout~~

<u>NUMBER</u>	<u>ARTICLE</u>	<u>TITLE</u>
5141.23	Students	Communicable Disease Control

<u>SUBTOPIC</u>	<u>POLICY</u>	<u>REGULATION</u>	<u>EXHIBIT</u>
Welfare	*		

DETAIL

~~It shall be the responsibility of the Director of Health to institute and conduct a program of communicable disease control and prevention. In the implementation of such policy, all persons having contract with pupils shall be properly advised of overt symptoms of communicable diseases.~~

REFERENCE

~~Cross-reference:——~~

~~Health Manual~~

~~Education code 49403; 49405; 49408~~

MANAGEMENT RESOURCES

ADOPTED

~~April 24, 1978~~

REVISED

CSBA DATE

DISTRICT GOAL

TO: BOARD OF EDUCATION

DISCUSSION

08/23/07

FROM: DIANNE TALARICO / TIMOTHY R. WALKER /
LAUREL SCHMIDT

Previously

08/09/07

RE: REVISE POLICIES 5141.21, 5141.22

DISCUSSION ITEM NO. D.06

It is recommended the Board of Education revise the following health-related policies to reflect best practices in school health care.

Attachment:

- Board Policy 5141.21 - Administering Medication and Monitoring Health
- Board Policy 5141.22 - Students with Infectious Diseases

New text in underline
Deleted text in ~~strikeout~~

<u>NUMBER</u>	<u>ARTICLE</u>	<u>TITLE</u>
5141.21	Students	Administering Medication and Monitoring Health Conditions

<u>SUBTOPIC</u>	<u>POLICY</u>	<u>REGULATION</u>	<u>EXHIBIT</u>
Welfare	X		

DETAIL

The Governing Board recognizes that students may need to take prescribed medication during the school day in order to be able to attend school without jeopardizing their health.

When the district has received written statements from the student's physician and parent/guardian, designated personnel shall assist the student in taking the medication. In addition, upon written request, designated personnel may assist the student in monitoring, testing or treatment of an existing medical condition. (Education Code 49423)

Upon written request by the parent/guardian and with the approval of the student's physician, a student with an existing medical condition that requires frequent monitoring, testing or treatment may be allowed to self administer this service. The student shall observe universal precautions in the handling of blood and bodily fluids.

A. Anaphylactic Injections (EPI-PEN)

The Board recognizes that some students have allergies of such severity that they may require an emergency anaphylactic injection during the course of the school day.

Parents/guardians who are aware of this foreseeable need may ask the district to provide such injections in accordance with administrative regulations.

School staff who may be required to administer anaphylactic injections shall receive training from qualified medical personnel. They will be authorized to administer the injections in accordance with administrative regulations and will be afforded appropriate liability protection.

B. Automatic External Defibrillator (AED)

The Board recognizes the importance of taking appropriate action whenever an emergency threatens the safety, health or welfare of a student at school or during school-sponsored activities.

Automatic External Defibrillators may be installed at school sites for use in the case of sudden cardiac arrest. School staff who may be required to administer external defibrillation using the AED shall receive training from qualified medical personnel. They will be authorized to administer the AED in accordance with

administrative regulations and will be afforded appropriate liability protection.

C. Insulin

The Board of Education recognizes that in order to achieve the optimal control of blood sugar, the diabetic student may need to use insulin during the school day. Insulin may only be administered by a licensed nurse, the parent, the diabetic student or a trained parent designee not employed by the district. Trained Diabetic Personnel can supervise the student who is competent to self-administer insulin. Written orders for insulin administration signed by the doctor and the parent must be submitted to the site prior to any administration of insulin to/by the student.

REFERENCE

Legal Reference:

EDUCATION CODE

49407 Liability for treatment

49408 Emergency information

49423 Administration of prescribed medication for student

49423.5 Specialized health care services

49426 School nurses

49480 Continuing medication regimen; notice

BUSINESS AND PROFESSIONS CODE

2700-2837 Nursing, especially:

2726 Authority not conferred

2727 Exceptions in general

MANAGEMENT RESOURCES

Legal Reference EDUCATION CODE 49407 Liability for treatment 49408 Emergency information 49423 Administration of prescribed medication for student 49423.5 Specialized health care services 49426 School nurses 49480 Continuing medication regimen; notice

BUSINESS AND PROFESSIONALS CODE 2700-2837 Nursing, especially: 2726 Authority not conferred 2727 Exceptions in general

ADOPTED

October 29, 1998

REVISED

xxxxx

June 24, 2004

CSBA DATE

October 1995

DISTRICT GOAL

New text in underline
Deleted text in ~~strikeout~~

<u>NUMBER</u>	<u>ARTICLE</u>	<u>TITLE</u>
5141.22	Students	Students with Infectious Diseases

<u>SUBTOPIC</u>	<u>POLICY</u>	<u>REGULATION</u>	<u>EXHIBIT</u>
Welfare	X		

DETAIL

GENERAL PRINCIPLES

The Board of Education recognizes its dual responsibility to protect the health of students from risks posed by infectious diseases and to uphold the right of students to a free and appropriate education. The Board recognizes that prevention and education are the most effective means of limiting the spread of infectious diseases.

The Superintendent or Health Services designee shall collaborate with parents/guardians and local health agencies and organizations to develop a comprehensive approach to disease prevention that promotes preventative measures and education of students and staff.

The Superintendent or designee shall regularly review resources available from health experts to ensure that district programs are based on the most up-to-date information.

The Superintendent or designee shall ensure that the district's comprehensive health education program provides information about the prevention of infectious diseases, including the nature of bloodborne pathogens and their transmission, as well as information to help prevent the spread of contagious diseases, such as a pandemic influenza. He/she shall also ensure that each school has sufficient infection prevention supplies that are easily accessible to staff.

For purposes of this policy, infectious diseases shall include all those listed by the State Department of Health Services and the County Health Department.

The admission of a student with an infectious disease shall be determined by the Superintendent/Health Services designee in consultation with the student's parent/guardian, the student's physician and the County Health Department.

It shall be the responsibility of the District Health Services to institute and conduct a program of communicable disease control and prevention. This program shall include all district employees having regular contact with pupils and shall properly advise them of overt symptoms of communicable diseases.

Students with Infectious Diseases

The Superintendent or Health Services designee shall exclude students only in accordance with law, Board policy, and administrative regulation. Because bloodborne pathogens such as hepatitis B virus, hepatitis C virus, and human immunodeficiency virus (HIV) are not casually transmitted, the presence of infectious conditions of this type is not, by itself, sufficient reason to exclude students from attending school.

Parents/guardians are encouraged to inform the Superintendent or designee if their child has an infectious disease so that school staff may work cooperatively with the student's parents/guardians to minimize the child's exposure to other diseases in the school setting. The Superintendent or designee shall ensure that student confidentiality rights are strictly observed in accordance with law.

EVALUATING STUDENTS WHO ARE INFECTED WITH HIV

HIV is not spread by casual, everyday contact. Students who are infected with HIV shall attend the school and classroom to which they would be assigned if they were not infected. They are entitled to all rights, privileges, and services accorded to other students. Decisions about any changes in the education program of a student who is infected with HIV shall be made on a case-by-case basis, relying on the best available scientific evidence and medical advice.

A program of on-going education about HIV for students shall be conducted to ensure that all are informed in a consistent manner about the nature of HIV infection, including how it is and is not transmitted and how to prevent its spread.

CONFIDENTIALITY

The people who shall know the identity of a student who is infected with HIV shall treat all information as highly confidential. No information shall be divulged, directly or indirectly, to any other individuals or groups. All related medical information and written documentation of discussions, telephone conversations, proceedings, and meetings shall be kept by the superintendent/designee in a locked file. Access to this file will be granted only to those persons who have the written consent of the infected student's parent or guardian. To further protect confidentiality, names will not be used in documents except when this is essential. Any document containing the name, or any other information that would reveal the identity of the infected person, will not be shared with any person, not even for the purposes of word processing or reproduction.

REFERENCE

Legal Reference:
EDUCATION CODE

48210-48216 Persons excluded
49073-49079 Privacy of pupil records
49403 Cooperation in control of communicable disease and immunization of pupils
49405 Smallpox control
49406 Examination for tuberculosis (employees)
49408 Information of use in emergencies
49602 Confidentiality of student information
51202 Instruction in personal and public health and safety
 CALIFORNIA CONSTITUTION
 Article 1, Section 1 Right to Privacy
 CIVIL CODE
56-56.37 Confidentiality of Medical Information Act
1798-1798.76 Information Practices Act
 HEALTH AND SAFETY CODE
120230 Exclusion for communicable disease
120325-120380 Immunization against communicable diseases
120875-120895 AIDS information
120975-121022 Mandated blood testing and confidentiality to protect public health
121475-121520 Tuberculosis tests for pupils
 CODE OF REGULATIONS, TITLE 8
5193 California bloodborne pathogens standard
 CODE OF REGULATIONS, TITLE 17
2500-2511 Communicable disease reporting requirements
 UNITED STATES CODE, TITLE 20
1232g Family Educational and Privacy Rights Act
1400-1482 Individuals with Disabilities Education Act
 UNITED STATES CODE, TITLE 29
794 Section 504 of the Rehabilitation Act of 1973
 CODE OF FEDERAL REGULATIONS, TITLE 45
164.500-164.534 Health Insurance Portability and Accountability Act (HIPAA)
 COURT DECISIONS
 Thomas v. Atascadero Unified School District, (1987) 662 F.Supp. 376

MANAGEMENT RESOURCES

CSBA PUBLICATIONS
 Saving Lives: AIDS Issues for California Schools 1994, rev. 2006
 Avian Influenza, Governance and Policy Services Fact Sheet, April 2006
 WEB SITES
 CSBA: <http://www.csba.org>
 California Department of Education: <http://www.cde.ca.gov>
 California Department of Health Services: <http://www.dhs.ca.gov>
 Centers for Disease Control and Prevention: <http://www.cdc.gov>
 Contra Costa County Office of Education, Pandemic Flu Resources: <http://www.cccoe.k12.ca.us/about/flu/resources> flu action kit
 U.S. Government Pandemic Flu Information:
<http://www.pandemicflu.gov>

<u>ADOPTED</u>	<u>REVISED</u>	<u>CSBA DATE</u>
May 29, 1990	xxxxxxxx	July 2006

TO: BOARD OF EDUCATION

DISCUSSION

08/23/07

FROM: DIANNE TALARICO / CHIUNG-SALLY CHOU

Previously

08/09/07

RE: REVISE POLICY 6146.11 - ALTERNATIVE CREDITS TOWARD GRADUATION

DISCUSSION ITEM NO. D.07

It is recommended the Board of Education revise Board Policy 6146.11 - Alternative Credits toward Graduation. These revisions are recommended by CSBA.

Attachment:

- Board Policy 6146.11 - Alternative Credits toward Graduation

***** ***** ***** ***** ***** *****

The board requested this policy come back for action with further clarification regarding item #9 - foreign language credits earned at a private school.

The board requested that Section B regarding online courses be brought back as a separate policy and new discussion item.

New text in underline
Deleted text in ~~strikeout~~

<u>NUMBER</u>	<u>ARTICLE</u>	<u>TITLE</u>
6146.11	Instruction	Alternative Credits Toward Graduation

<u>SUBTOPIC</u>	<u>POLICY</u>	<u>REGULATION</u>	<u>EXHIBIT</u>
Curriculum	X		

DETAIL

In order to meet individual student needs and encourage all students to complete their high school education, the Board of Education desires to provide flexibility in the completion of prescribed courses in accordance with law. The Board shall actively involve parents/guardians, administrators, teachers, and students in helping the district develop alternative means for students to complete the prescribed course of study required for graduation. As an alternative to completing the course requirements for high school graduation and with prior approval by the principal or designee, students may fulfill one or more of the course requirements through the following:

1. Practical demonstration of skills and competencies
2. Supervised work experience or other outside school experience up to 40 semester periods in accordance with Education Code 51760.3 and 5 CCR 1635, ~~or other outside school experience~~
3. Career technical education, Vocational education and/or Regional Occupational Program (ROP) classes offered through our high schools ~~district.~~
4. Courses offered by regional occupational centers or programs (ROP)
5. Interdisciplinary Study
6. Independent study
7. Credit earned at a postsecondary institution (Pursuant to 5 CCR 1630)
8. Private instruction in accordance with ~~(Pursuant to 5 CCR 1631)~~
9. Credit for private school foreign language instruction in accordance with 5 CCR 1362)
10. Military service and training in accordance with 5 CCR 1634
11. Correspondence instruction from a California university or college accredited for teacher training in accordance with 5 CCR 1633 ~~(Pursuant to EC 51740)~~
12. To satisfy the district's driver education and training requirement, a program approved by the Department of Motor Vehicles which offers drivers education and behind-the-wheel instruction through a driving school or licensed independent driving instructor in accordance with Vehicle Code 12814.6
13. For credit toward the district's physical education

requirement, participation in district interscholastic athletic programs carried on wholly or partially after regular school hours when such participation entails a comparable amount of time and physical activity

The district shall accept for credit any coursework satisfactorily completed by students while detained in a juvenile court school or county or state-operated institution. District students who successfully complete district graduation requirements while so detained shall receive a diploma from the school they last attended. (Education Code 48645.5)

~~Students may receive physical education credit for participation in district interscholastic athletic programs carried on wholly or partially after regular school hours when such participation entails a comparable amount of time and physical activity.~~

~~Students using interscholastic athletics participation to fulfill physical education requirements may be graded on this participation, provided that a teacher credentialed to teach physical education supervises this participation and assigns the grade. (Reference BP 6145 Extracurricular and Cocurricular Activities)~~

~~The Superintendent or designee shall determine whether a student has satisfactorily met course requirements through any of the above alternative means.~~

A. Concurrent/Dual Enrollment

Concurrent/Dual enrollment means enrollment in any non-SMMUSD course during the school year or during the summer by a regularly enrolled SMMUSD student. Concurrent/Dual enrollment is an alternative means by which students may obtain credit toward graduation while being simultaneously enrolled in both the school district and another approved educational program. Students must obtain signed pre-approval for any concurrent/dual enrollment course or program from the school principal or designee.

Concurrent/Dual enrollment may be approved for "make-up", "acceleration", and/or "enrichment" purposes.

Courses eligible for concurrent/dual enrollment include:

1. Any course offered by Santa Monica High School, Malibu High School, Olympic High School or the SMMUSD Adult School, either during the school year or during the summer.
2. Courses offered by any community college, public or private college/university
3. Courses offered by the UC Extension Program

Students who demonstrate that the courses they want to take are not available at their high school, may, with the pre-approval of the principal, take courses at accredited high schools other than the schools mentioned above.

~~Nothing in this policy is construed to permit web-based or on-line courses either as alternative credits toward graduation or as a course eligible for concurrent enrollment for "make-ups", "acceleration" and/or "enrichment."~~

B. Online Courses

Online courses are delivered over the Internet or provided through a set curriculum via software. Students may participate in web-based or online courses either as alternative credits toward graduation or as a course eligible for concurrent enrollment for "make-ups", "acceleration" and/or "enrichment." Students must obtain signed pre-approval for any online course or program from the school principal or designee.

For the 2007-2008 school year, the principal shall evaluate the quality and effectiveness of online course offerings and determine which online courses shall be accepted for high school credit. No student shall earn more than twenty (20) high school credits in any given school year.

Beginning July 1, 2008, only District approved online providers and/or courses listed in the accompanying Administrative Regulation shall be eligible for high school credits.

The Superintendent or designee shall determine whether a student has satisfactorily met course requirements through any of the above alternative means.

Legal Reference:

EDUCATION CODE 35160 Authority of governing boards 35160.1 Broad authority of school districts 48645.5 Course credit, juvenile court schools 48800-48802 Attendance at community college; advanced education 51220 Areas of study; grades 7-12 51225.3 Requirements for graduation 51240-51246 Exemptions from requirements 51740-51741 Authority to provide instruction by correspondence
CODE OF REGULATIONS, TITLE 5
1600-1635 Alternative credit

Management Resources:

SMMUSD BOARD POLICY
BP6145 Extracurricular and Co-curricular Activities

CDE PROGRAM ADVISORIES

0418.89 Physical Education, April 18, 1989

0615.89 Granting credit for passing GED, SPB:88/89-11

WEB SITES

CDE: <http://www.cde.ca.gov>

BOARD GOAL

A. Quality Instruction for All

BOARD ADOPTED: _____ CSBA UPDATED: March, 2000

The above BP 6146.11 Alternative Credits Toward Graduation was amended and approved by the board, as shown, at its May 16, 2002, board meeting.

TO: BOARD OF EDUCATION

DISCUSSION

08/23/07

FROM: DIANNE TALARICO / CHIUNG-SALLY CHOU

RE: NEW POLICY 6171 - TITLE I PROGRAMS

DISCUSSION ITEM NO. D.08

It is recommended the Board of Education revise Board Policy 6171 - Title I Programs.

Attachment:

- Board Policy 6171 - Title I Programs

THIS IS A **NEW POLICY**

New text in underline

Deleted text in ~~strikeout~~

<u>NUMBER</u>	<u>ARTICLE</u>	<u>TITLE</u>		
<u>6171</u>	<u>Instruction</u>	<u>Title I Programs</u>		
<u>SUBTOPIC</u>	<u>POLICY</u>	<u>REGULATION</u>	<u>EXHIBIT</u>	
<u>Students</u>	<u>X</u>			

DETAIL

In order to improve the academic achievement of students from economically disadvantaged families, the district shall use federal Title I funds to provide supplementary services that reinforce the core curriculum and assist students in attaining proficiency on state academic standards and assessments.

The Superintendent or designee shall provide technical assistance and support to any school participating in the Title I program, including consultation in the development and implementation of school plans and activities. (20 USC 6312)

The district and each school receiving Title I funds shall develop a written parent involvement policy in accordance with 20 USC 6318.

Local Educational Agency Plan

The Superintendent or designee shall consult with teachers, principals, administrators, other appropriate school personnel, and parents/guardians of participating students in the development, periodic review, and, as necessary, the revision of a local educational agency (LEA) plan. The plan and any revisions shall be submitted to the Governing Board for approval. (20 USC 6312)

The plan shall address the components specified in 20 USC 6312, which describe the assessments, strategies, and services the district will use to help low-achieving students meet challenging academic standards.

The initial plan shall be submitted to the California Department of Education (CDE) and approved by the State Board of Education. Subsequent revisions of the plan shall be kept on file in the district.

Comparability of Services

State and local funds used in schools receiving Title I funds shall provide services that, taken as a whole, are at least

comparable to services in schools that are not receiving Title I funds or, if all district schools are receiving Title I funds, that are substantially comparable in each school. Comparability may be determined on a school-by-school basis or by grade span. (20 USC 6321)

To demonstrate comparability of services among district schools:

1. The Board shall adopt and implement a districtwide salary schedule.
2. The ratio of students to teachers, administrators, and other staff at each Title I school shall not exceed 110 percent of the average ratio across non-Title I schools.
3. Salary expenditures at each Title I school shall be no less than 90 percent of the average salary expenditure across non-Title I schools.
4. All district schools shall be provided with the same level of base funding per student for curriculum and instructional materials.
5. The Superintendent or designee shall maintain records of the quantity and quality of instructional materials and equipment at each school.

In determining comparability, the district shall not include staff salary differentials for years of employment. The district also may exclude unpredictable changes in student enrollment or personnel assignments that occur after the beginning of the school year, state and local funds expended for language instruction educational programs, state and local funds expended for the excess costs of providing services to disabled students, and supplemental state or local funds expended in any school attendance area or school for programs that specifically meet the intent and purposes of Title I. (20 USC 6321)

At the beginning of each school year, the Superintendent or designee shall measure comparability in accordance with the above criteria and maintain records documenting the district's compliance. If any instances of noncomparability are identified, the Superintendent or designee shall promptly implement adjustments as needed to ensure comparability.

Program Evaluation

The Board shall use state assessment results and other available measures or indicators to annually determine whether each participating school is making adequate yearly progress toward ensuring that all students meet the state's proficient level of achievement on state assessments. (20 USC 6316)

Legal Reference:

EDUCATION CODE

11503 Parent involvement programs in Title I schools

52055.57 Districts identified or at risk of identification for

program improvement
 54020-54028 Economic Impact Aid
 54420-54425 State Compensatory Education
 64001 Single plan for student achievement, consolidated application
 programs
 UNITED STATES CODE, TITLE 20
 6301 Program purpose
 6311-6322 Improving basic programs for disadvantaged students,
 including:
 6312 Local educational agency plan
 6313 Eligibility of schools and school attendance areas; funding
 allocation
 6314 Title I schoolwide programs
 6315 Targeted assistance schools
 6316 School improvement
 6318 Parent involvement
 6320 Participation of private school students
 6321 Comparability of services
 7881 Participation of private school students
 CODE OF FEDERAL REGULATIONS, TITLE 34
 200.1-200.79 Improving basic programs for disadvantaged students

Management Resources:

CSBA PUBLICATIONS

Parent Involvement: Development of Effective and Legally Compliant
 Policies, Governance and Policy Services Policy Briefs, August 2006

CALIFORNIA DEPARTMENT OF EDUCATION PUBLICATIONS

LEA Plan, rev. May 17, 2006

Provisions for Private School Students, Teachers, and Other Education
 Personnel in the No Child Left Behind Act of 2001, rev. November 1,
 2005

U.S. DEPARTMENT OF EDUCATION GUIDANCE

Title I Fiscal Issues, May 26, 2006

Designing Schoolwide Programs, March 22, 2006

Supplemental Educational Services, June 13, 2005

The Impact of the New Title I Requirements on Charter Schools, July
 2004

Parental Involvement: Title I, Part A, April 23, 2004

Serving Preschool Children Under Title I, March 4, 2004

Title I Services to Eligible Private School Students, October 17, 2003

Local Educational Agency Identification and Selection of School
 Attendance Areas and Schools and Allocation of Title I Funds to Those
 Areas and Schools, August 2003

WEB SITES

CSBA: <http://www.csba.org>

California Department of Education:

<http://www.cde.ca.gov/iasa/titleone>

No Child Left Behind: <http://www.ed.gov/nclb>

U.S. Department of Education: <http://www.ed.gov>

ADOPTED

XXXXXXXXXX

REVISED

CSBA DATE

August 2006

INFORMATION ITEMS

TO: BOARD OF EDUCATION

INFORMATION

08/23/07

FROM: DIANNE TALARICO / STEPHEN R. HODGSON

5:30pm

RE: PRESENTATION BY FINANCIAL ADVISOR OF PROPOSED STRUCTURE OF \$60 MILLION SERIES "A" MEASURE "BB" BOND

~~INFORMATION~~ **DISCUSSION** ITEM NO. I.01

Mr. Tony Hsieh and Mr. Chet Wang of Piper Jaffray & Co., the district's financial advisors on the Measure "BB" Bond, will be in attendance to discuss the proposed structure of the \$60 million Series "A" Measure "BB" Bond.

COMMENT: At the June 7, 2007, board meeting, the board approved issuance of Series "A" (\$60 million) of the Measure "BB" General Obligation Bond (*Item A.24*). That item included a next-step activity timeline and responsibility schedule. At the June 28, 2007, board meeting, the board discussed the negotiated or competitive sale of the Series "A" Measure "BB" Bond (*Item D.01*), and on July 12, 2007, the board adopted Resolution No. 07-01 for a "negotiated" sale of the Series "A" Measure "BB" Bond.

The presentation now will be to discuss the proposed structure of that negotiated sale of the Series "A" Measure "BB" Bond.

***** ***** ***** ***** ***** *****

President Wisnicki made the correction that this item was meant to be a discussion item, not an information item.

TO: BOARD OF EDUCATION

INFORMATION

08/23/07

FROM: DIANNE TALARICO / STEPHEN R. HODGSON /
VIRGINIA I. HYATT

RE: DETAIL OF STAFFING FORECAST FOR THREE-MONTH PRELIMINARY
CONTRACT FOR PROGRAM MANAGEMENT SERVICES - PARSONS 3D/I

INFORMATION ITEM NO. I.02

During the Board of Education meeting of August 9, 2007, the board approved a contract extension to Parsons 3D/I for a total of three months, in an amount of \$353,000. It was requested by the Board of Education that the details of the staffing costs be brought to the board at its next board meeting. Attached are the cost details from July through September.

This contract will cover the necessary tasks for Measure "BB" until the final contract negotiations are completed.

TO: BOARD OF EDUCATION
FROM: DIANNE TALARICO / CHIUNG-SALLY CHOU
RE: SUPPLEMENTAL TEXTBOOKS

INFORMATION
08/23/07

INFORMATION ITEM NO. I.03

It is recommended that the textbooks listed below be adopted for the Santa Monica-Malibu Unified School District.

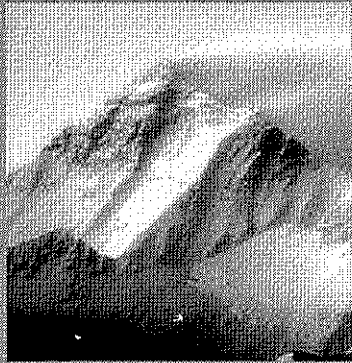
COMMENT: In accordance with the Board of Education policy, the textbook(s) listed below will be on public display for the next two weeks in the Educational Services Department at 1638 17th Street, Santa Monica, CA 90405.

CHEMISTRY, written by R Thomas Myers, PhD., Keith Oldham, Salvatore Tocci, Adoption requested by Bertha Roman from Samohi for 10th Grade Chemistry P. This is to replace the core curriculum being used.

ATTACHMENTS

Attached are the following items that were handed out at the board meeting:

- "Measure BB General Obligation Bond Program" presented by Piper Jaffray (Information Item No. I.01)
- Draft Preliminary Schedule of Measure "BB" Projects for Santa Monica HS and Malibu MS/HS presented by Parsons 3d/I (Discussion Item No. D.01)



SANTA MONICA-MALIBU UNIFIED SCHOOL DISTRICT

Measure BB General Obligation Bond Program

Issuance of Series A (2007)

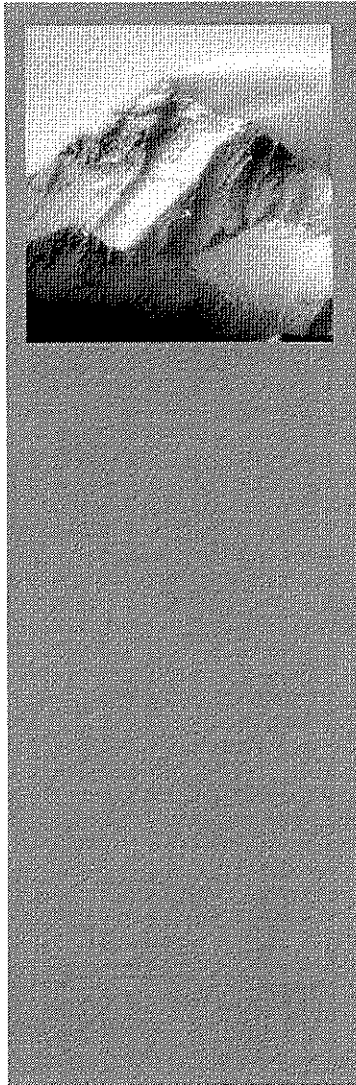
August 23, 2007 Board Meeting

Tony Hsieh
Vice President
anthony.r.hsieh@pjc.com

Piper Jaffray & Co.
1235 Hermosa Ave., Suite 300
Hermosa Beach, CA 90254
800-876-1854

GUIDES FOR
THE JOURNEY® | PiperJaffray®

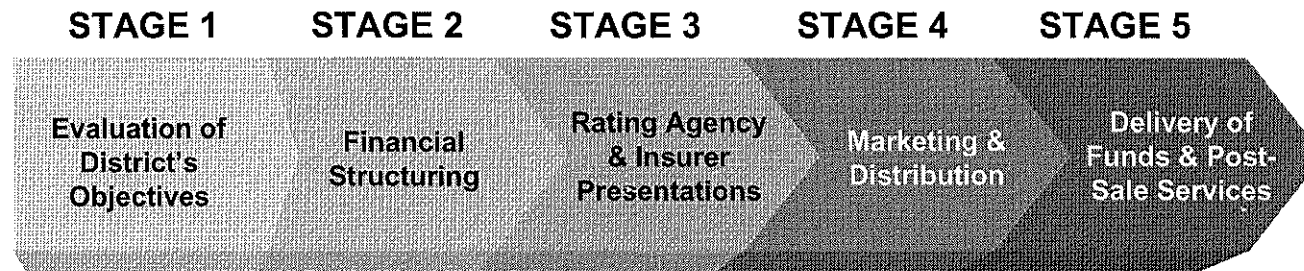
Table of Contents



<u>SECTION</u>	<u>PAGE</u>
Bond Issuance Steps	1
Bond Program Variables	2
Preliminary Bond Program Scenarios	7

Bond Issuance Steps

Piper Jaffray will lead/coordinate with the financing team through the process



1. Evaluation of District's Objectives

- Piper meets with District to assess the objectives of the upcoming financing
- Piper works with the District to account for other sources of project funding, if any

2. Financial Structuring

- Piper prepares projected bond issuance schedules to meet the cashflow of the District's overall capital improvement plan
- Piper presents the District with various issuance options
 - Discuss impact of bond structure on Bond Program
- Piper assists the District in evaluating issuance options to determine an appropriate bond structure

3. Rating Agency & Insurer Presentations

- Piper develops a credit enhancement and credit rating strategy

4. Marketing & Distribution

- Piper develops a comprehensive marketing and distribution plan
- Piper markets the District's bonds to prospective investors
- Piper sells the District's bonds; underwrites any unsold bonds

5. Delivery of Funds & Post-Sale Services

- District receives and utilizes funds on bond projects
- Piper continually revises bond issuance schedules to accommodate any changes in assessed value growth, interest rates or the District's capital improvement plan
- Piper assists the District with ratings maintenance and investor relations
- Piper monitors the District's bonds for refinancing opportunities

Bond Program Variables

There are five key variables to consider when implementing the bond program

Bonding Capacity

- California Education Code limit on the amount of general obligation bonds a school district may have outstanding at any given time

Future Interest Rates

- Impacts timing and amount of bonds that can be issued at a fixed tax rate

Projected Assessed Value (“AV”) Growth Rate

- Impacts the issuance amount and timing of the bond program
- Based on past growth and projected development and property value appreciation

Tax Rate

- Tax rate approved at bond election (\$30 per \$100,000 of assessed value)
- Other overlapping taxes (i.e. Santa Monica CCD bonds, District’s parcel tax, etc.)

Issuance Schedule

- Timing, amount and length of bond issuances
- Based on District’s projected capital project expenditures and revised throughout the life of the bond program

District Bonding Capacity

Bonding capacity is a statutory limit that sets the maximum amount of bonds the District can have outstanding at any given time

Estimated Current Bonding Capacity ⁽¹⁾		
2007/08 Assessed Value	\$	31,926,254,125
Applicable Bond Debt Limit	x	2.50%
Maximum Bonding Capacity	\$	798,156,353
Less: Outstanding Bonds	\$	(79,295,034)
Available Bonding Capacity	\$	718,861,319

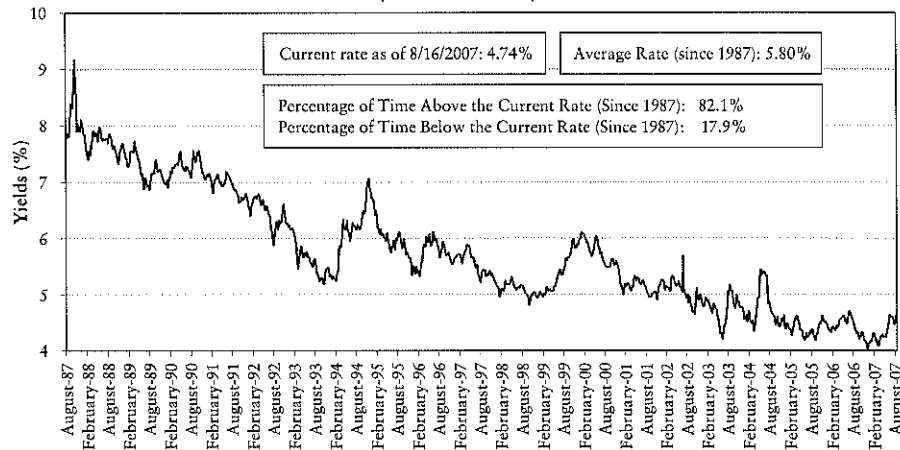
The District currently has over \$718 million in available bonding capacity

As assessed value grows and outstanding bonds are paid off, bonding capacity increases

⁽¹⁾ Subject to verification by the Los Angeles County Auditor-Controller's Office.

Interest Rate and Assessed Value Growth Variables

Bond Buyer General Obligation Bond Interest Rate Index
(1987 to Present)



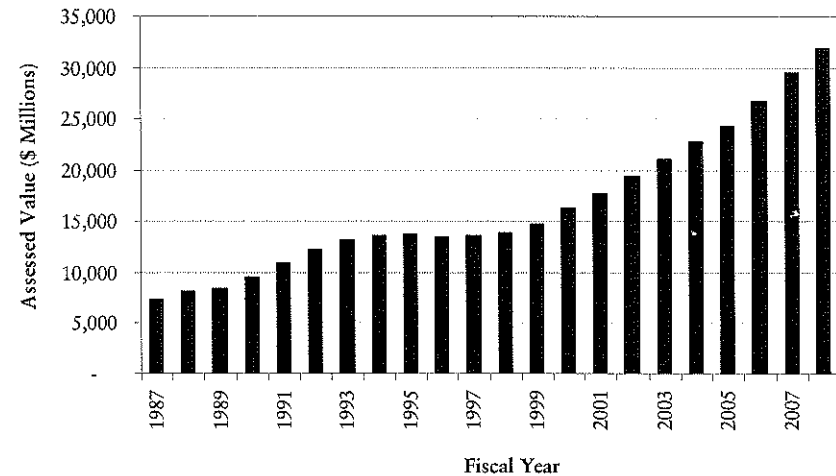
Source: The Bond Buyer

Current rate (as of August 16, 2007) of 4.74%

- 82% of time above current rate (since 1987)
- 18% of time below current rate (since 1987)

Average general obligation bond interest rate of 5.80% since 1987

District Total Assessed Value



Source: California Municipal Statistics

Current assessed value over \$31.9 billion

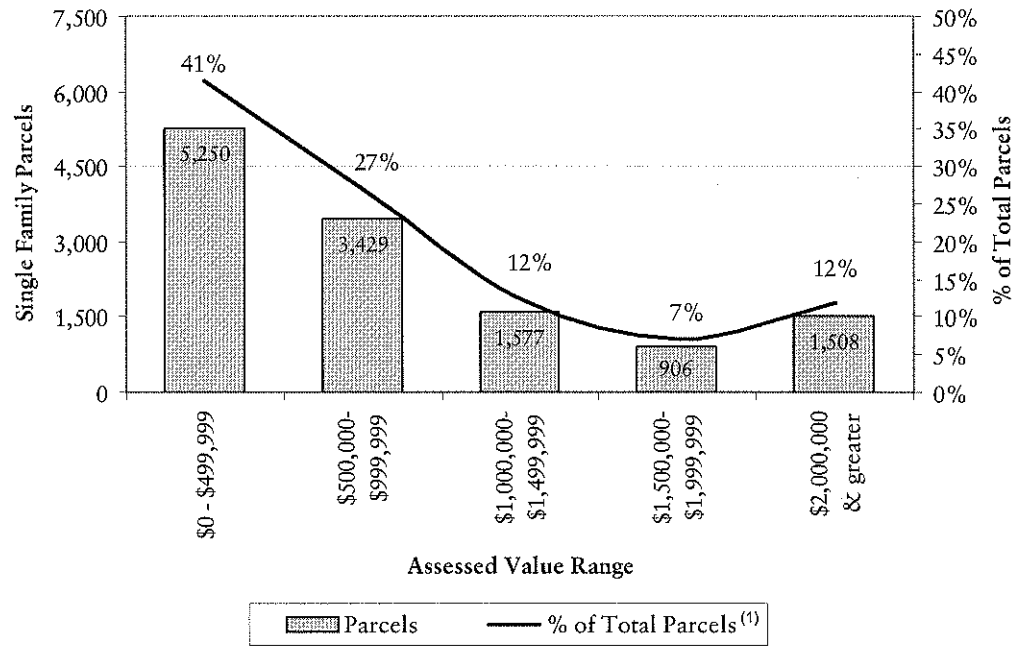
Average Annual Assessed Value Growth Rates

- 1-year: 8.0%
- 5-year: 8.7%
- 10-year: 8.7%
- 20-year: 7.1%

Single Family Residence Parcel Breakdown

Significant growth potential from “untapped” assessed value

Single Family Parcels By Number & %



12,670 single family residential parcels

68% of single family parcels have assessed values below \$1,000,000

- 41% below \$500,000

Average assessed value of a single family residence is \$1,027,118

- \$437,717 for condominiums

Source: California Municipal Statistics

(1) Total does not add to 100% due to rounding.

Overlapping Debt Statement

2006-07 Assessed Valuation: \$29,570,115,254
 Redevelopment Incremental Valuation: 5,376,501,657
 Adjusted Assessed Valuation: \$24,193,613,597

<u>DIRECT AND OVERLAPPING TAX AND ASSESSMENT DEBT:</u>	<u>% Applicable</u>	<u>Debt 8/1/07</u>
Los Angeles County Flood Control District	3.061%	\$ 3,477,207
Metropolitan Water District	1.490	5,350,814
Los Angeles Community College District	0.009	86,969
Santa Monica Community College District	100.	185,152,931
Santa Monica-Malibu Unified School District	100.	79,295,034 (1)
City of Santa Monica	99.994	20,138,792
Los Angeles County Regional Park and Open Space Assessment District	2.982	<u>8,111,935</u>
TOTAL DIRECT AND OVERLAPPING TAX AND ASSESSMENT DEBT		\$301,613,682

<u>DIRECT AND OVERLAPPING GENERAL FUND DEBT:</u>		
Los Angeles County General Fund Obligations	2.982%	\$ 32,350,285
Los Angeles County Pension Obligations	2.982	16,307,042
Los Angeles County Superintendent of Schools Certificates of Participation	2.982	557,368
Santa Monica Community College District Certificates of Participation	100.	28,905,000
Santa Monica-Malibu Unified School District Certificates of Participation	100.	17,816,501
City of Malibu Certificates of Participation	100.	17,580,000
City of Santa Monica General Fund Obligations	99.994	71,895,686
City of Westlake Village Certificates of Participation	0.001	75
Los Angeles County Sanitation District No. 27 Authority	100.	<u>742,881</u>
TOTAL DIRECT AND OVERLAPPING GENERAL FUND DEBT		\$186,154,838

COMBINED TOTAL DEBT \$487,768,520 (2)

- (1) Excludes general obligation bonds to be sold.
 (2) Excludes tax and revenue anticipation notes, enterprise revenue, mortgage revenue and tax allocation bonds and non-bonded capital lease obligations.

Ratios to 2006-07 Assessed Valuation:
Direct Debt (\$79,295,034)..... 0.27%
 Total Direct and Overlapping Tax and Assessment Debt..... 1.02%

Ratios to Adjusted Assessed Valuation:
Combined Direct Debt (\$97,111,535)..... 0.40%
 Combined Total Debt..... 2.02%

STATE SCHOOL BUILDING AID REPAYABLE AS OF 6/30/07: \$0

Source: California Municipal Statistics, Piper Jaffray

Proposed Series A Structure

Assumptions

All-Inclusive Series A Rate as of 8/20/07	5.03%
All-Inclusive Rate Thereafter	6.00%
Annual Assessed Value Growth Rate	4.00%
Annual Debt Service Growth for 1st 4 Years	2.00%
Annual Debt Service Growth Thereafter	4.00%

Date	Principal	Interest	Debt Service
8/1/2008	5,955,000	2,334,724	8,289,724
8/1/2009	6,535,000	2,710,925	9,245,925
8/1/2010	290,000	2,449,525	2,739,525
8/1/2011	150,000	2,437,925	2,587,925
8/1/2012	205,000	2,431,925	2,636,925
8/1/2013	320,000	2,423,725	2,743,725
8/1/2014	445,000	2,410,925	2,855,925
8/1/2015	575,000	2,393,125	2,968,125
8/1/2016	720,000	2,370,125	3,090,125
8/1/2017	875,000	2,341,325	3,216,325
8/1/2018	1,035,000	2,306,325	3,341,325
8/1/2019	1,225,000	2,251,988	3,476,988
8/1/2020	1,430,000	2,187,675	3,617,675
8/1/2021	1,650,000	2,112,600	3,762,600
8/1/2022	1,890,000	2,025,975	3,915,975
8/1/2023	2,145,000	1,926,750	4,071,750
8/1/2024	2,420,000	1,814,138	4,234,138
8/1/2025	2,720,000	1,687,088	4,407,088
8/1/2026	3,035,000	1,544,288	4,579,288
8/1/2027	3,380,000	1,384,950	4,764,950
8/1/2028	3,750,000	1,207,500	4,957,500
8/1/2029	4,145,000	1,010,625	5,155,625
8/1/2030	4,570,000	793,013	5,363,013
8/1/2031	5,025,000	553,088	5,578,088
8/1/2032	5,510,000	289,275	5,799,275
Total	60,000,000	47,399,524	107,399,524

Scenario 1 (Bond Proceeds by 2010)

Issuance Schedule

<u>Series</u>	<u>Issue Date</u>	<u>Proceeds</u>	<u>Financing Term</u>	<u>Year</u>	<u>Series A Debt Service</u>	<u>Remaining Debt Service</u>	<u>Total Debt Service</u>	<u>Tax Rate</u>
Series A	September 2007	\$ 60,000,000	25 Years	2008	8,289,724	0	8,289,724	28.22
				2009	9,245,925	0	9,245,925	29.35
Series B	August 2009	100,000,000	25 Years	2010	2,739,525	6,726,480	9,466,005	28.84
Series C	November 2010	108,000,000	40 Years	2011	2,587,925	7,067,975	9,655,900	28.29
				2012	2,636,925	7,212,089	9,849,014	27.74
				2013	2,743,725	7,499,241	10,242,966	27.76
				2014	2,855,925	7,796,751	10,652,676	27.76
				2015	2,968,125	8,110,649	11,078,774	27.76
				2016	3,090,125	8,431,792	11,521,917	27.76
				2017	3,216,325	8,766,460	11,982,785	27.76
				2018	3,341,325	9,120,763	12,462,088	27.76
				2019	3,476,988	9,483,575	12,960,563	27.76
				2020	3,617,675	9,861,302	13,478,977	27.76
				2021	3,762,600	10,255,527	14,018,127	27.76
				2022	3,915,975	10,662,869	14,578,844	27.76
				2023	4,071,750	11,090,239	15,161,989	27.76
				2024	4,234,138	11,534,322	15,768,460	27.76
				2025	4,407,088	11,992,102	16,399,190	27.76
				2026	4,579,288	12,475,861	17,055,149	27.76
				2027	4,764,950	12,972,396	17,737,346	27.76
				2028	4,957,500	13,489,332	18,446,832	27.76
				2029	5,155,625	14,029,071	19,184,696	27.76
				2030	5,363,013	14,589,063	19,952,076	27.76
				2031	5,578,088	15,172,063	20,750,150	27.76
				2032	5,799,275	15,780,873	21,580,148	27.76
				2033		22,443,345	22,443,345	27.76
				2034		23,341,070	23,341,070	27.76
				2035		24,274,705	24,274,705	27.76
				2036		25,245,684	25,245,684	27.76
				2037		26,255,503	26,255,503	27.76
				2038		27,305,715	27,305,715	27.76
				2039		28,397,935	28,397,935	27.76
				2040		29,533,844	29,533,844	27.76
				2041		30,715,189	30,715,189	27.76
				2042		31,943,788	31,943,788	27.76
				2043		33,221,531	33,221,531	27.76
				2044		34,550,383	34,550,383	27.76
				2045		35,932,390	35,932,390	27.76
				2046		37,369,677	37,369,677	27.76
				2047		38,864,456	38,864,456	27.76
				2048		40,419,026	40,419,026	27.76
				2049		42,035,778	42,035,778	27.76
				2050		43,717,201	43,717,201	27.76
				Total	107,399,524	819,688,012	927,087,536	

(1) Assumes discount rate of 5.0%.

Scenario 2 (Bond Proceeds by 2015)

Issuance Schedule

<u>Series</u>	<u>Issue Date</u>	<u>Proceeds</u>	<u>Financing Term</u>	<u>Year</u>	<u>Series A Debt Service</u>	<u>Remaining Debt Service</u>	<u>Total Debt Service</u>	<u>Tax Rate</u>
Series A	September 2007	\$ 60,000,000	25 Years	2008	8,289,724	0	8,289,724	28.22
				2009	9,245,925	0	9,245,925	29.35
Series B	August 2009	80,000,000	25 Years	2010	2,739,525	6,726,480	9,466,005	28.84
				2011	2,587,925	7,067,975	9,655,900	28.29
Series C	August 2011	45,000,000	25 Years	2012	2,636,925	7,212,089	9,849,014	27.74
				2013	2,743,725	7,499,241	10,242,966	27.76
Series D	August 2013	40,000,000	27 Years	2014	2,855,925	7,796,751	10,652,676	27.76
				2015	2,968,125	8,110,649	11,078,774	27.76
Series E	August 2015	43,000,000	31 Years	2016	3,090,125	8,431,792	11,521,917	27.76
				2017	3,216,325	8,766,460	11,982,785	27.76
Total Authorization		\$ 268,000,000		2018	3,341,325	9,120,763	12,462,088	27.76
				2019	3,476,988	9,483,575	12,960,563	27.76
Present Value of Authorization ⁽¹⁾		\$ 228,536,678		2020	3,617,675	9,861,302	13,478,977	27.76
				2021	3,762,600	10,255,527	14,018,127	27.76
Final Maturity	August 1, 2046			2022	3,915,975	10,662,869	14,578,844	27.76
				2023	4,071,750	11,090,239	15,161,989	27.76
				2024	4,234,138	11,534,322	15,768,460	27.76
				2025	4,407,088	11,992,102	16,399,190	27.76
				2026	4,579,288	12,475,861	17,055,149	27.76
				2027	4,764,950	12,972,396	17,737,346	27.76
				2028	4,957,500	13,489,332	18,446,832	27.76
				2029	5,155,625	14,029,071	19,184,696	27.76
				2030	5,363,013	14,589,063	19,952,076	27.76
				2031	5,578,088	15,172,063	20,750,150	27.76
				2032	5,799,275	15,780,873	21,580,148	27.76
				2033		22,443,345	22,443,345	27.76
				2034		23,341,070	23,341,070	27.76
				2035		24,274,705	24,274,705	27.76
				2036		25,245,684	25,245,684	27.76
				2037		26,255,503	26,255,503	27.76
				2038		27,305,715	27,305,715	27.76
				2039		28,397,935	28,397,935	27.76
				2040		29,533,844	29,533,844	27.76
				2041		30,715,189	30,715,189	27.76
				2042		31,943,788	31,943,788	27.76
				2043		33,221,531	33,221,531	27.76
				2044		34,550,383	34,550,383	27.76
				2045		35,932,390	35,932,390	27.76
				2046		14,657,435	14,657,435	10.37
				Total	107,399,524	631,939,309	739,338,833	

(1) Assumes discount rate of 5.0%.

Scenario 3 (Education Code Financings Only)

Issuance Schedule					Series A	Remaining	Total	
Series	Issue Date	Proceeds	Financing Term	Year	Debt Service	Debt Service	Debt Service	Tax Rate
Series A	September 2007	\$ 60,000,000	25 Years	2008	8,289,724	0	8,289,724	28.22
Series B	August 2009	42,000,000	25 Years	2009	9,245,925	0	9,245,925	29.35
Series C	August 2011	42,000,000	25 Years	2010	2,739,525	6,726,480	9,466,005	28.84
Series D	August 2013	42,000,000	25 Years	2011	2,587,925	7,067,975	9,655,900	28.29
Series E	August 2015	42,000,000	25 Years	2012	2,636,925	7,212,089	9,849,014	27.74
Series F	August 2017	40,000,000	25 Years	2013	2,743,725	7,499,241	10,242,966	27.76
Total Authorization		\$ 268,000,000		2014	2,855,925	7,796,751	10,652,676	27.76
Present Value of Authorization ⁽¹⁾		\$ 216,973,572		2015	2,968,125	8,110,649	11,078,774	27.76
Final Maturity	August 1, 2042			2016	3,090,125	8,431,792	11,521,917	27.76
				2017	3,216,325	8,766,460	11,982,785	27.76
				2018	3,341,325	9,120,763	12,462,088	27.76
				2019	3,476,988	9,483,575	12,960,563	27.76
				2020	3,617,675	9,861,302	13,478,977	27.76
				2021	3,762,600	10,255,527	14,018,127	27.76
				2022	3,915,975	10,662,869	14,578,844	27.76
				2023	4,071,750	11,090,239	15,161,989	27.76
				2024	4,234,138	11,534,322	15,768,460	27.76
				2025	4,407,088	11,992,102	16,399,190	27.76
				2026	4,579,288	12,475,861	17,055,149	27.76
				2027	4,764,950	12,972,396	17,737,346	27.76
				2028	4,957,500	13,489,332	18,446,832	27.76
				2029	5,155,625	14,029,071	19,184,696	27.76
				2030	5,363,013	14,589,063	19,952,076	27.76
				2031	5,578,088	15,172,063	20,750,150	27.76
				2032	5,799,275	15,780,873	21,580,148	27.76
				2033		22,443,345	22,443,345	27.76
				2034		23,341,070	23,341,070	27.76
				2035		24,274,705	24,274,705	27.76
				2036		25,245,684	25,245,684	27.76
				2037		26,255,503	26,255,503	27.76
				2038		27,305,715	27,305,715	27.76
				2039		28,397,935	28,397,935	27.76
				2040		29,533,844	29,533,844	27.76
				2041		30,715,189	30,715,189	27.76
				2042		31,943,788	31,943,788	27.76
				Total	107,399,524	513,577,570	620,977,094	

(1) Assumes discount rate of 5.0%.

Present Value of Issuance Scenarios

The issuance schedule impacts the present value of the bond funds

<u>Issuance Date</u>	<u>Scenario 1</u>		<u>Scenario 2</u>		<u>Scenario 3</u>	
	<u>Issuance</u>	<u>Present Value</u> ⁽¹⁾	<u>Issuance</u>	<u>Present Value</u> ⁽¹⁾	<u>Issuance</u>	<u>Present Value</u> ⁽¹⁾
10/17/2007	60,000,000	60,000,000	60,000,000	60,000,000	60,000,000	60,000,000
8/1/2008						
8/1/2009	100,000,000	90,702,948	80,000,000	72,562,358	42,000,000	38,095,238
8/1/2010	108,000,000	93,294,461				
8/1/2011			45,000,000	37,021,611	42,000,000	34,553,504
8/1/2012						
8/1/2013			40,000,000	29,848,616	42,000,000	31,341,047
8/1/2014						
8/1/2015			43,000,000	29,104,093	42,000,000	28,427,253
8/1/2016						
8/1/2017					40,000,000	24,556,530
8/1/2018						
Total	268,000,000	243,997,408	268,000,000	228,536,678	268,000,000	216,973,572

⁽¹⁾ Based upon discount rate of 5.0%.

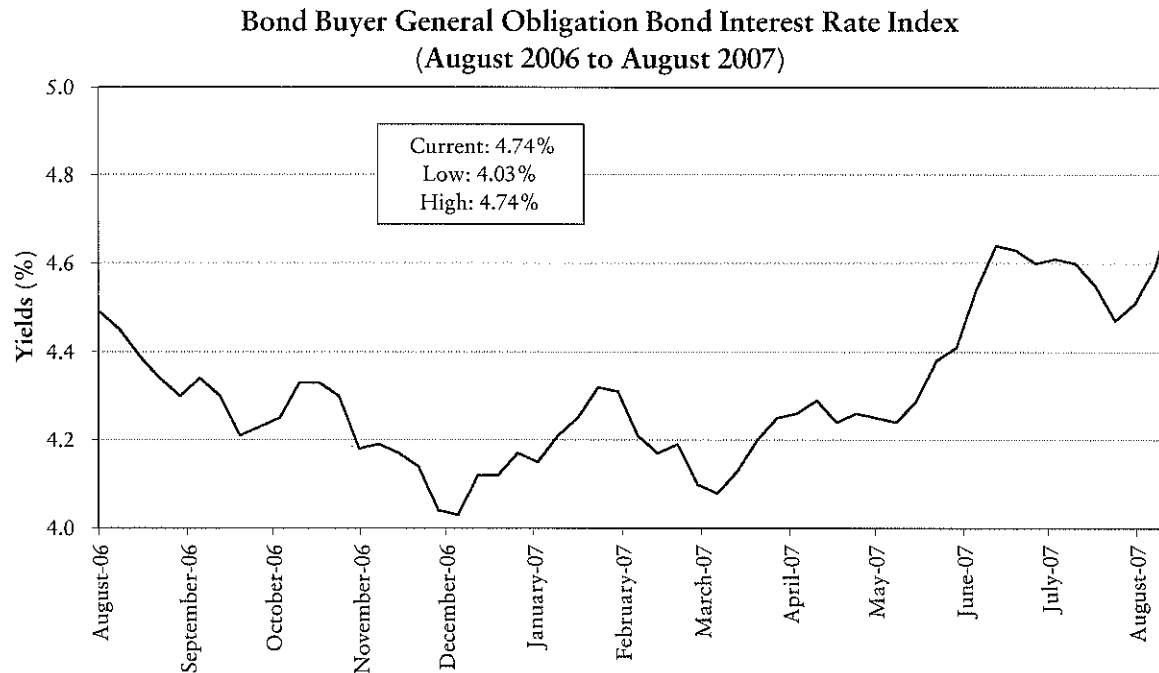
Comparison of Issuance Scenarios

Year	Projected Debt Service			Projected Tax Rates		
	Scenario 1 (Proceeds by 2010)	Scenario 2 (Proceeds by 2015)	Scenario 3 (Ed Code Only)	Scenario 1 (Proceeds by 2010)	Scenario 2 (Proceeds by 2015)	Scenario 3 (Ed Code Only)
2008	8,289,724	8,289,724	8,289,724	28.22	28.22	28.22
2009	9,245,925	9,245,925	9,245,925	29.35	29.35	29.35
2010	9,466,005	9,466,005	9,466,005	28.84	28.84	28.84
2011	9,655,900	9,655,900	9,655,900	28.29	28.29	28.29
2012	9,849,014	9,849,014	9,849,014	27.74	27.74	27.74
2013	10,242,966	10,242,966	10,242,966	27.76	27.76	27.76
2014	10,652,676	10,652,676	10,652,676	27.76	27.76	27.76
2015	11,078,774	11,078,774	11,078,774	27.76	27.76	27.76
2016	11,521,917	11,521,917	11,521,917	27.76	27.76	27.76
2017	11,982,785	11,982,785	11,982,785	27.76	27.76	27.76
2018	12,462,088	12,462,088	12,462,088	27.76	27.76	27.76
2019	12,960,563	12,960,563	12,960,563	27.76	27.76	27.76
2020	13,478,977	13,478,977	13,478,977	27.76	27.76	27.76
2021	14,018,127	14,018,127	14,018,127	27.76	27.76	27.76
2022	14,578,844	14,578,844	14,578,844	27.76	27.76	27.76
2023	15,161,989	15,161,989	15,161,989	27.76	27.76	27.76
2024	15,768,460	15,768,460	15,768,460	27.76	27.76	27.76
2025	16,399,190	16,399,190	16,399,190	27.76	27.76	27.76
2026	17,055,149	17,055,149	17,055,149	27.76	27.76	27.76
2027	17,737,346	17,737,346	17,737,346	27.76	27.76	27.76
2028	18,446,832	18,446,832	18,446,832	27.76	27.76	27.76
2029	19,184,696	19,184,696	19,184,696	27.76	27.76	27.76
2030	19,952,076	19,952,076	19,952,076	27.76	27.76	27.76
2031	20,750,150	20,750,150	20,750,150	27.76	27.76	27.76
2032	21,580,148	21,580,148	21,580,148	27.76	27.76	27.76
2033	22,443,345	22,443,345	22,443,345	27.76	27.76	27.76
2034	23,341,070	23,341,070	23,341,070	27.76	27.76	27.76
2035	24,274,705	24,274,705	24,274,705	27.76	27.76	27.76
2036	25,245,684	25,245,684	25,245,684	27.76	27.76	27.76
2037	26,255,503	26,255,503	26,255,503	27.76	27.76	27.76
2038	27,305,715	27,305,715	27,305,715	27.76	27.76	27.76
2039	28,397,935	28,397,935	28,397,935	27.76	27.76	27.76
2040	29,533,844	29,533,844	29,533,844	27.76	27.76	27.76
2041	30,715,189	30,715,189	30,715,189	27.76	27.76	27.76
2042	31,943,788	31,943,788	31,943,788	27.76	27.76	27.76
2043	33,221,531	33,221,531	-	27.76	27.76	-
2044	34,550,383	34,550,383	-	27.76	27.76	-
2045	35,932,390	35,932,390	-	27.76	27.76	-
2046	37,369,677	14,657,435	-	27.76	10.37	-
2047	38,864,456	-	-	27.76	-	-
2048	40,419,026	-	-	27.76	-	-
2049	42,035,778	-	-	27.76	-	-
2050	43,717,201	-	-	27.76	-	-
Total	927,087,536	739,338,833	620,977,094			

Current Issues in the Bond Market

Concerns surrounding the collapse of subprime debt have contributed to the recent volatility of the markets

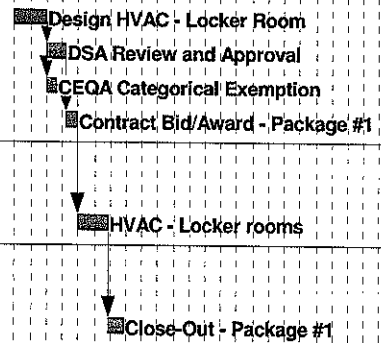
Investors are currently seeking safety primarily in U.S. Treasuries, while equities, corporate bonds, and municipal bonds continue to trade at lower levels (higher rates)



Timetable of Events

Rating agency and bond insurer presentations	September 13-14
Receive ratings & insurance bids	September 17
Print and mail Preliminary Official Statement	September 18
Pre-pricing conference call	September 24
Pricing – Sale of bonds	September 25
Print and mail Official Statement	October 2
Closing – District receives bond proceeds	October 16

Activity ID	Activity Description	Orig Dur	Early Start	Early Finish	Budgeted Cost in Million	2008	2009	2010	2011	2012	2013	2014	2015	2016	2017	2018	2019
Santa Monica HS Program																	
Measure BB																	
Pkg #1 (HVAC - Locker Room)																	
Preconstruction																	
HVAC Locker Rooms																	
SMH1150	Design HVAC - Locker Room	180	01JAN08	28JUN08	0.00												
SMH1170	DSA Review and Approval	120	29JUN08	26OCT08	0.00												
SMH1175	CEQA Categorical Exemption	60	29JUN08	27AUG08	0.00												
SMH1250	Contract Bid/Award - Package #1	60	27OCT08	25DEC08	0.00												
Construction																	
HVAC Locker Rooms																	
SMH1130	HVAC - Locker rooms	180	26DEC08	23JUN09	0.00												
Close-Out																	
HVAC Locker Rooms																	
SMH1260	Close-Out - Package #1	90	24JUN09	21SEP09	0.00												



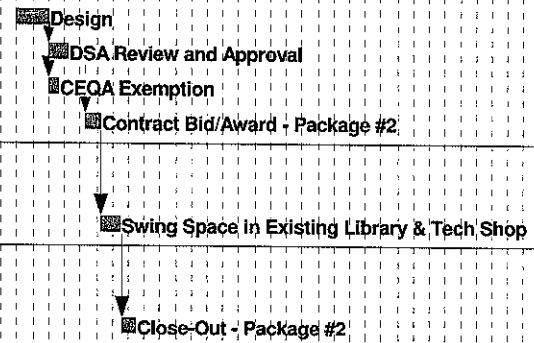
Start Date 02JUL07
 Finish Date 11FEB17
 Data Date 01AUG07
 Run Date 21AUG07 07:50

Early Bar
 Progress Bar
 Critical Activity

MAST
Santa Monica HS
Draft Preliminary Schedule
 Sheet 1 of 1

Date	Revision	Checked	Approved

Activity ID	Activity Description	Orig Dur	Early Start	Early Finish	Budgeted Cost in Million	2008	2009	2010	2011	2012	2013	2014	2015	2016	2017	2018	2019
Santa Monica HS Program																	
Measure BB																	
Pkg #2 (Temp. Swing Space - Library & Tech Shop)																	
Preconstruction																	
<i>Temp. Swing Space - Library & Tech Shop</i>																	
SMH2200	Design	180	01JAN08	28JUN08	1.45												
SMH2230	DSA Review and Approval	120	29JUN08	26OCT08	0.48												
SMH2240	CEQA Exemption	60	29JUN08	27AUG08	0.00												
SMH4200	Contract Bid/Award - Package #2	90	25JAN09*	24APR09	0.10												
Construction																	
<i>Temp. Swing Space - Library & Tech Shop</i>																	
SMH5140	Swing Space in Existing Library & Tech Shop	120	25APR09	22AUG09	0.00												
Close-Out																	
<i>Temp. Swing Space - Library & Tech Shop</i>																	
SMH6340	Close-Out - Package #2	60	24AUG09	13NOV09	0.00												



Start Date 02JUL07
 Finish Date 11FEB17
 Data Date 01AUG07
 Run Date 21AUG07 07:50

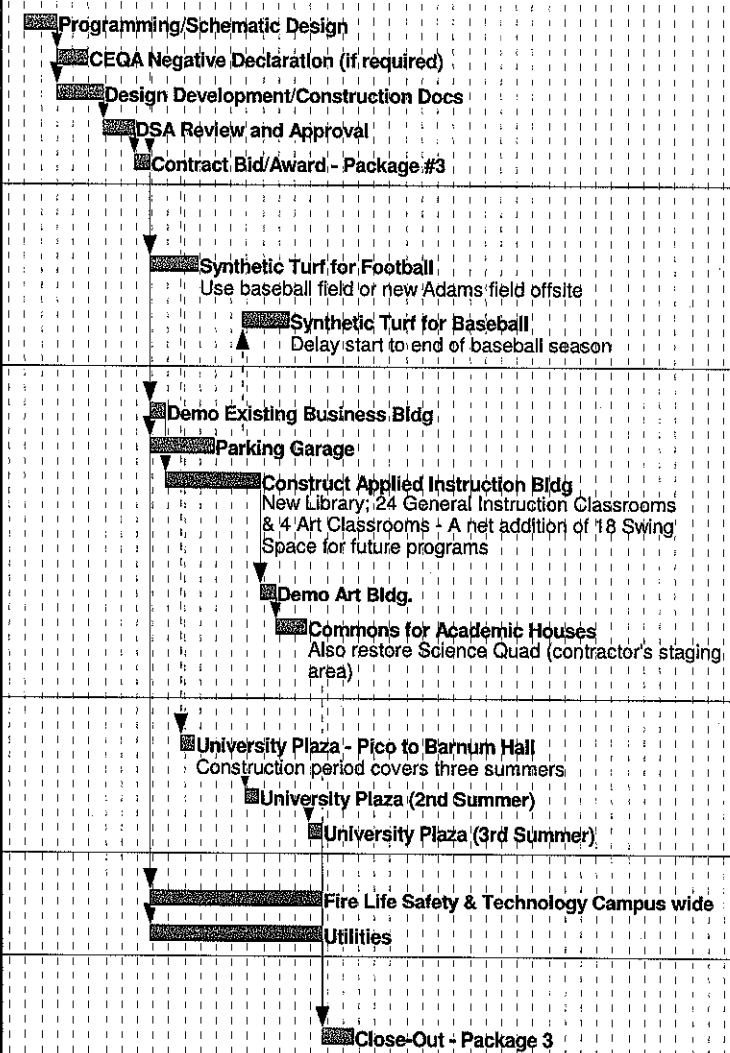
Early Bar
 Progress Bar
 Critical Activity

MAST
Santa Monica HS
Draft Preliminary Schedule

Sheet 1 of 1

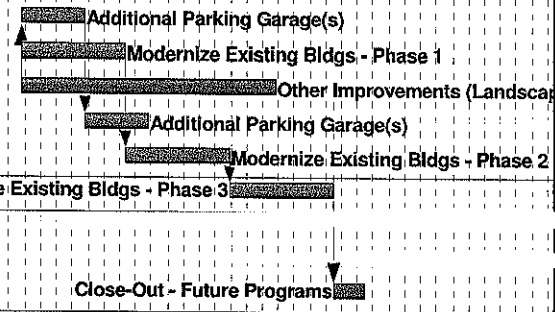
Date	Revision	Checked	Approved

Activity ID	Activity Description	Orig Dur	Early Start	Early Finish	Budgeted Cost in Million	Year																	
						2008	2009	2010	2011	2012	2013	2014	2015	2016	2017	2018	2019						
Santa Monica HS Program																							
Measure BB																							
Pkg #3(Bldg, Parking, Infrastructure & Sitework)																							
Preconstruction																							
Bldg., Parking, Infrastructure & Sitework																							
SMH1030	Programming/Schematic Design	180	01JAN08	28JUN08	1.45																		
SMH1040	CEQA Negative Declaration (if required)	180	29JUN08	25DEC08	0.00																		
SMH1060	Design Development/Construction Docs	270	29JUN08	25MAR09	4.24																		
SMH1070	DSA Review and Approval	180	26MAR09	21SEP09	0.48																		
SMH1080	Contract Bid/Award - Package #3	90	22SEP09	20DEC09	0.10																		
Construction																							
Synthetic Turf																							
SMH1220	Synthetic Turf for Football	270	21DEC09	16SEP10	0.00																		
SMH1230	Synthetic Turf for Baseball	270	01JUN11*	25FEB12	0.00																		
Demo & Construction: Bldg. & Parking																							
SMH1160	Demo Existing Business Bldg	90	21DEC09	20MAR10	0.00																		
SMH1180	Parking Garage	360	21DEC09	15DEC10	0.00																		
SMH1185	Construct Applied Instruction Bldg	540	21MAR10	11SEP11	0.00																		
SMH1205	Demo Art Bldg.	90	12SEP11	10DEC11	0.00																		
SMH1210	Commons for Academic Houses	174	11DEC11	01JUN12	0.00																		
University Plaza																							
SMH1190	University Plaza - Pico to Barnum Hall	77	15JUN10*	30AUG10	0.00																		
SMH1195	University Plaza (2nd Summer)	77	15JUN11*	30AUG11	0.00																		
SMH1200	University Plaza (3rd Summer)	77	15JUN12*	30AUG12	0.00																		
Utilities & Fire Life Safety																							
SMH1270	Fire Life Safety & Technology Campus wide	984	21DEC09	30AUG12	0.00																		
SMH1330	Utilities	984	21DEC09	30AUG12	0.00																		
Close-Out																							
SMH6240	Close-Out - Package 3	180	31AUG12	26FEB13	0.00																		



Start Date	02JUL07	Early Bar	Santa Monica HS Draft Preliminary Schedule	Sheet 1 of 1								
Finish Date	11FEB17	Progress Bar										
Data Date	01AUG07	Critical Activity										
© Primavera Systems, Inc.				<table border="1"> <thead> <tr> <th>Date</th> <th>Revision</th> <th>Checked</th> <th>Approved</th> </tr> </thead> <tbody> <tr> <td> </td> <td> </td> <td> </td> <td> </td> </tr> </tbody> </table>	Date	Revision	Checked	Approved				
Date	Revision	Checked	Approved									

Activity ID	Activity Description	Orig Dur	Early Start	Early Finish	Budgeted Cost in Million	2008	2009	2010	2011	2012	2013	2014	2015	2016	2017	2018	2019
Santa Monica HS Program																	
Future Programs																	
Additional Parking, Modernization & Site Work																	
Construction																	
<i>Future Programs</i>																	
SMH1280	Additional Parking Garage(s)	365	12SEP11	10SEP12	0.00												
SMH1300	Modernize Existing Bldgs - Phase 1	600	12SEP11	03MAY13	0.00												
SMH1380	Other Improvements (Landscape, Amphitheater etc)	1,469	12SEP11	19SEP15	0.00												
SMH1290	Additional Parking Garage(s)	365	11SEP12	10SEP13	0.00												
SMH1310	Modernize Existing Bldgs - Phase 2	600	04MAY13	24DEC14	0.00												
SMH1320	Modernize Existing Bldgs - Phase 3	600	25DEC14	15AUG16	0.00												
Close-Out																	
<i>Future Programs</i>																	
SMH1400	Close-Out - Future Programs	180	16AUG16	11FEB17	0.48												



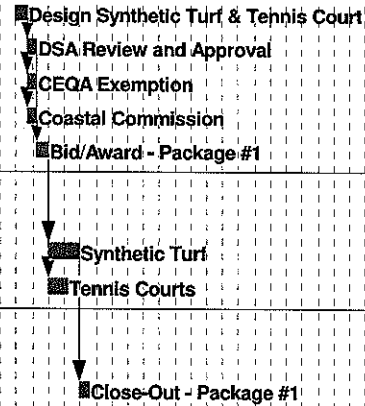
Start Date 02JUL07
 Finish Date 11FEB17
 Data Date 01AUG07

Early Bar
 Progress Bar
 Critical Activity

MAST
Santa Monica HS
Draft Preliminary Schedule
 Sheet 1 of 1

Date	Revision	Checked	Approved

Activity ID	Activity Description	Orig Dur	Early Start	Early Finish	Budgeted Cost in Million	2008	2009	2010	2011	2012	2013	2014	2015	2016	2017	2018	2019
Malibu HS																	
Measure BB																	
Pkg #1 (Athletic Facilities)																	
Preconstruction																	
Athletic Facilities																	
MHS2110	Design Synthetic Turf & Tennis Court	60	01JAN08	29FEB08	0.00												
MHS2120	DSA Review and Approval	60	01MAR08	29APR08	0.00												
MHS2130	CEQA Exemption	60	01MAR08	29APR08	0.00												
MHS2140	Coastal Commission	60	01MAR08	29APR08	0.00												
MHS4130	Bid/Award - Package #1	60	30APR08	28JUN08	0.00												
Construction																	
Athletic Facilities																	
MHS5090	Synthetic Turf	180	29JUN08	25DEC08	30.91												
MHS5100	Tennis Courts	120	29JUN08	26OCT08	0.00												
Close-Out																	
Athletic Facilities																	
MHS6100	Close-Out - Package #1	60	26DEC08	23FEB09	0.30												



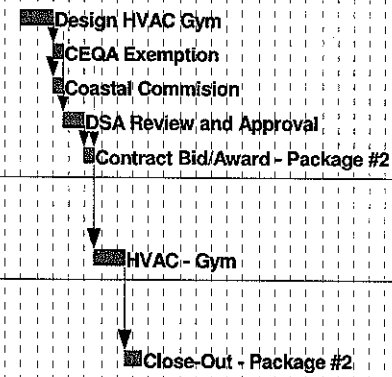
Start Date 02JUL07
 Finish Date 11FEB17
 Data Date 01AUG07
 Run Date 21AUG07 07:54

Early Bar
 Progress Bar
 Critical Activity

MAST
Malibu HS
Draft Preliminary Schedule
 Sheet 1 of 1

Date	Revision	Checked	Approved

Activity ID	Activity Description	Orig Dur	Early Start	Early Finish	Budgeted Cost in Million	2008	2009	2010	2011	2012	2013	2014	2015	2016	2017	2018	2019
Malibu HS																	
Measure BB																	
Pkg #2 (HVAC - Locker Rooms Competition Gym)																	
Preconstruction																	
<i>HVAC Locker Rooms</i>																	
MHS2030	Design HVAC Gym	180	01JAN08	28JUN08	0.91												
MHS2040	CEQA Exemption	60	29JUN08	27AUG08	0.00												
MHS2050	Coastal Commision	60	29JUN08	27AUG08	0.00												
MHS2070	DSA Review and Approval	120	28AUG08	25DEC08	0.30												
MHS4080	Contract Bid/Award - Package #2	60	26DEC08	23FEB09	0.06												
Construction																	
<i>HVAC Locker Rooms</i>																	
MHS5130	HVAC - Gym	180	24FEB09	22AUG09	0.00												
Close-Out																	
<i>HVAC Locker Rooms</i>																	
MHS6140	Close-Out - Package #2	90	23AUG09	20NOV09	0.00												



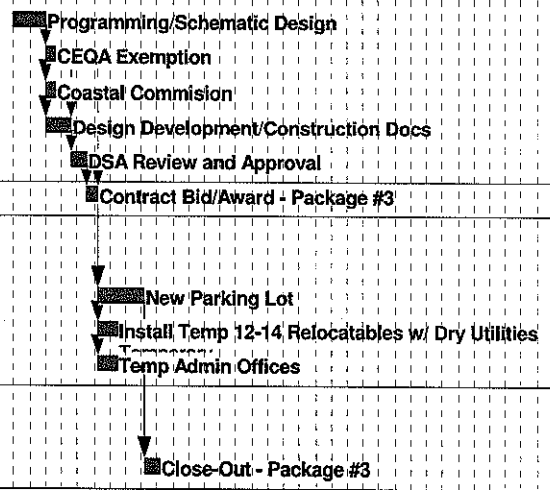
Start Date 02JUL07
 Finish Date 11FEB17
 Data Date 01AUG07
 Run Date 21AUG07 07:55

Early Bar
 Progress Bar
 Critical Activity

MAST
Malibu HS
Draft Preliminary Schedule
 Sheet 1 of 1

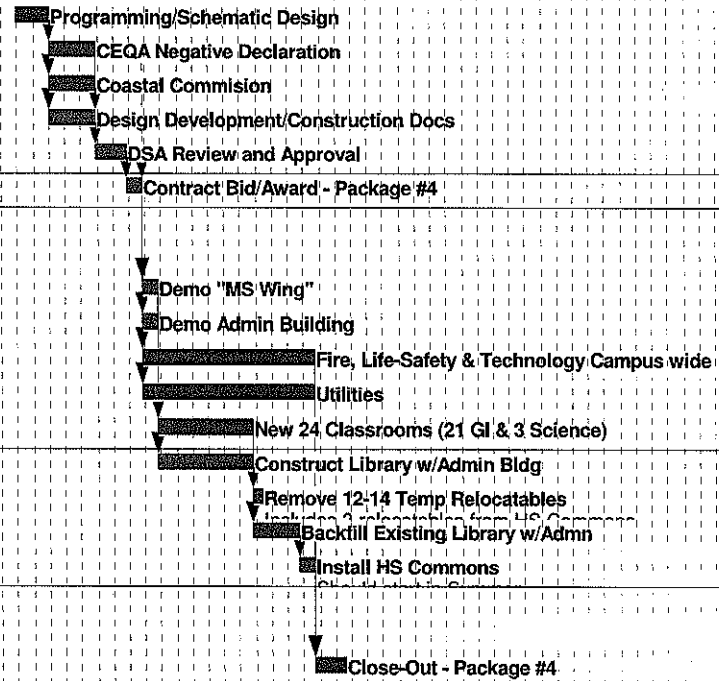
Date	Revision	Checked	Approved

Activity ID	Activity Description	Orig Dur	Early Start	Early Finish	Budgeted Cost in Million	2008	2009	2010	2011	2012	2013	2014	2015	2016	2017	2018	2019
Malibu HS																	
Measure BB																	
Pkg #3 (Parking & Temp Relocatables)																	
Preconstruction																	
Parking & Temp Relocatables																	
MHS2200	Programming/Schematic Design	180	01JAN08	28JUN08	0.91												
MHS2210	CEQA Exemption	60	29JUN08	27AUG08	0.00												
MHS2220	Coastal Commision	60	29JUN08	27AUG08	0.00												
MHS2230	Design Development/Construction Docs	150	29JUN08	25NOV08	2.66												
MHS2240	DSA Review and Approval	90	26NOV08	23FEB09	0.30												
MHS4250	Contract Bid/Award - Package #3	60	24FEB09	24APR09	0.06												
Construction																	
Parking & Temp Relocatables																	
MHS5260	New Parking Lot	270	25APR09	19JAN10	0.00												
MHS5270	Install Temp 12-14 Relocatables w/ Dry Utilities	120	25APR09	22AUG09	0.00												
MHS5280	Temp Admin Offices	120	25APR09	22AUG09	0.00												
Close-Out																	
Parking & Temp Relocatables																	
MHS6290	Close-Out - Package #3	90	20JAN10	19APR10	0.00												



Date	Revision	Checked	Approved

Activity ID	Activity Description	Orig Dur	Early Start	Early Finish	Budgeted Cost in Million	2008	2009	2010	2011	2012	2013	2014	2015	2016	2017	2018	2019
Malibu HS																	
Measure BB																	
Pkg #4 (Bldg & Infrastructure)																	
Preconstruction																	
Library w/ Admin Bldg																	
MHS2300	Programming/Schematic Design	180	01JAN08	28JUN08	0.91												
MHS2310	CEQA Negative Declaration	270	29JUN08	25MAR09	0.00												
MHS2320	Coastal Commision	270	29JUN08	25MAR09	0.00												
MHS2330	Design Development/Construction Docs	270	29JUN08	25MAR09	2.66												
MHS2340	DSA Review and Approval	180	26MAR09	21SEP09	0.30												
MHS4350	Contract Bid/Award - Package #4	90	22SEP09	20DEC09	0.06												
Construction																	
Library w/ Admin Bldg																	
MHS5360	Demo "MS Wing"	90	21DEC09	20MAR10	0.00												
MHS5400	Demo Admin Building	90	21DEC09	20MAR10	0.00												
MHS5430	Fire, Life-Safety & Technology Campus wide	703	21DEC09	29AUG12	0.00												
MHS5440	Utilities	703	21DEC09	29AUG12	0.00												
MHS5370	New 24 Classrooms (21 GI & 3 Science)	540	21MAR10	11SEP11	0.00												
MHS5410	Construct Library w/Admin Bldg	540	21MAR10	11SEP11	0.00												
MHS5380	Remove 12-14 Temp Relocatables	60	12SEP11	10NOV11	0.00												
MHS5420	Backfill Existing Library w/Admn	270	12SEP11	07JUN12	0.00												
MHS5390	Install HS Commons	90	01JUN12*	29AUG12	0.00												
Close-Out																	
Library w/ Admin Bldg																	
MHS6300	Close-Out - Package #4	180	30AUG12	25FEB13	0.00												



Start Date 02JUL07
 Finish Date 11FEB17
 Data Date 01AUG07
 Run Date 21AUG07 07:56

Early Bar
 Progress Bar
 Critical Activity

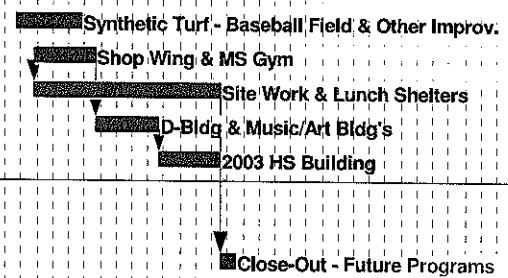
MAST

Malibu HS
Draft Preliminary Schedule

Sheet 1 of 1

Date	Revision	Checked	Approved

Activity ID	Activity Description	Orig Dur	Early Start	Early Finish	Budgeted Cost in Million	2008	2009	2010	2011	2012	2013	2014	2015	2016	2017	2018	2019
Malibu HS																	
Future Programs																	
Modernization & Infrastructure																	
Construction																	
Future Programs																	
MHS5305	Synthetic Turf - Baseball Field & Other Improv.	270	01JUN11*	12JUN12	0.00												
MHS5310	Shop Wing & MS Gym	360	12SEP11	05SEP12	0.00												
MHS5340	Site Work & Lunch Shelters	1,080	12SEP11	26AUG14	0.00												
MHS5320	D-Bldg & Music/Art Bldg's	360	06SEP12	31AUG13	0.00												
MHS5330	2003 HS Building	360	01SEP13	26AUG14	0.00												
Close-Out																	
Future Programs																	
MHS6350	Close-Out - Future Programs	90	27AUG14	24NOV14	0.00												



Start Date 02JUL07
 Finish Date 11FEB17
 Data Date 01AUG07
 Run Date 21AUG07 07:57

© Primavera Systems, Inc.

Early Bar
 Progress Bar
 Critical Activity

MAST

Malibu HS

Draft Preliminary Schedule

Sheet 1 of 1

Date	Revision	Checked	Approved