

For a Listing of Upcoming Board Meetings See Page vi of this Table of Contents
Santa Monica-Malibu Unified School District
Board of Education Meeting
AGENDA

March 13, 2008

A regular meeting of the Santa Monica-Malibu Unified School District Board of Education will be held on **Thursday, March 13, 2008**, in the **District Administrative Offices**: 1651 16th Street, Santa Monica, CA. The Board of Education will call the meeting to order at 4:00 p.m. in the Board Conference Room at the District Offices: 1651 16th Street, Santa Monica, CA., at which time the Board of Education will move to Closed Session regarding the items listed below. The public meeting will reconvene at 5:30 p.m. in the Board Room.

The public meeting will begin at 5:30 p.m.

Persons wishing to address the Board of Education regarding an item that is scheduled for this meeting must submit the “Request to Address” card **prior** to discussion of that item. Persons wishing to address the Board of Education regarding an item that is **not** scheduled on this meeting’s agenda may speak during the Public Comments section by submitting the Request to Address card at the beginning of the meeting. The same card is used for either option and is printed in both Spanish and English. Cards are located with meeting materials at the back of the room. Completed cards should be submitted to the Recording Secretary.

Time Certain Items: Those items listed for a specified time (indicated in bold) are listed to give the public an indication of when a particular item of interest will come before the Board. The Board will hear the item at the affixed time. However, if it is prudent to do so, the Board may adjust the time stamp to complete an item currently on the floor, but will not delay the time stamped item for more than 15 minutes.

I. CALL TO ORDER

- A. Roll Call
- B. Pledge of Allegiance

II. PUBLIC COMMENTS FOR CLOSED SESSION ITEMS ONLY

III. CLOSED SESSION:

- Conference with Superintendent regarding 2007-2008 Strategies for Negotiations with S.E.I.U. pursuant to GC §54957.6 as cited in the Brown Act.
- Closed session with legal counsel concerning anticipated litigation pursuant to GC §54956.9 as cited in the Brown Act (3 cases).

IV. BOARD OF EDUCATION – COMMENDATIONS / RECOGNITIONS

- Santa Monica Alternative School House (SMASH)

V. APPROVAL OF THE AGENDA

VI. APPROVAL OF MINUTES

- A.01 Approval of Minutes.....1
 - February 21, 2008
 - February 26, 2008
 - February 27, 2008

VII. CONSENT CALENDAR

Consent agenda items are considered routine, as agreed by the President, Vice President and Superintendent, requiring no discussion, and are normally all approved at one time by the Board of Education. However, members of the Board of Education, staff, or the public may request an item be removed from the consent agenda for clarification and/or discussion. Consideration will occur during Section XI (Major Items).

Curriculum and Instruction

A.02	Approval of Independent Contractors.....	2-3
A.03	Overnight Fieldtrip(s) 2007-2008.....	4
A.04	Conference and Travel Approval/Ratification.....	5-7
A.05	Approval of Special Education Contracts – 2007-2008	8-10

Business and Fiscal

A.06	Award of Purchase Orders – 2007-2008.....	11-11e
A.07	Agreement with the State Department of Education to Accept Funds for the Child Development Program for Fiscal Year 2007-08 through 2009-10	12
A.08	Acceptance of Work Completed – Exterior Painting Project – Bid #7.03 (Phase II) – John Adams Middle School – Alpha Décor & Painting, Inc.	13
A.09	Award of Bid #8.10 – Fencing Replacement Districtwide to <u>TBD</u>	14
A.10	Interim Architectural Contracts for Measure “BB” Facilities Design – Date Extension Only.....	15
A.11	Approval of Pre-Qualified List of Geotechnical Firms for Measure “BB” Projects – RFQ #8.14.....	16
A.12	Award of Title Search Records & Report for Measure “BB” – RFP #8.16	17
A.13	Acceptance of Gifts – 2007-2008	18-22

Personnel

A.14	Certificated Personnel – Elections, Separations	23-26
A.15	Classified Personnel – Merit.....	27-30
A.16	Classified Personnel – Non-Merit.....	31

VIII. PUBLIC COMMENTS

Public Comments is the time when members of the audience may address the Board of Education on items not scheduled on the meeting's agenda. All speakers are limited to three (3) minutes. When there are a large number of speakers, the Board may reduce the allotted time to two (2) minutes per speaker. The Brown Act (Government Code) states that Board members may not engage in discussion of issues raised during “VIII, Public Comments” except to ask clarifying questions, make a brief announcement, make a brief report on his or her own activities, or to refer the matter to staff. This Public Comment section is limited to 20 minutes. If the number of persons wishing to address the Board of Education exceeds the time limit, additional time will be provided in Section XVI, **CONTINUATION OF PUBLIC COMMENTS.**

IX. COMMUNICATIONS

The Communications section provides an opportunity for the Board of Education to hear reports from the individuals or Committee representative listed below. All reports are limited to 5 minutes or less. However, if more time is necessary, or if a report will not be presented, please notify the Board secretary eight workdays prior to the date of the meeting.

- A. Student Board Member Reports**
 - Alec Richker – Santa Monica High School
 - Kristen Lambert – Malibu High School
 - John Shippey – Olympic High School
- B. SMMCTA Update – Mr. Harry Keiley**
- C. S.E.I.U. Update – Ms. Keryl Cartee-McNeely**
- D. PTA Council President Report – Rebecca Kennerly**
- E. Financial Oversight Committee**
- F. Measure “BB” Advisory Committee**

X. SUPERINTENDENT’S REPORT

- Stairway of the Stars Music Performance (last week)
- Update on Small Schools Task Force
- Update on Special Education Independent Review
- Report Out on Unity Resource Festival
- Rotary Reads to Kids Week

MAJOR and DISCUSSION Items

As a general rule, items under MAJOR and DISCUSSION will be listed in order of importance as determined by the President, Vice President and Superintendent. Individual Board members may move to request a change in the order prior to consideration of any Major item. The Board may also move any of these items out of order to be heard immediately following PUBLIC COMMENTS if it appears that there is special interest by the public or as a courtesy to staff members making presentations to the Board.

XI. MAJOR ITEMS

These items are considered to be of major interest and/or importance and are presented for **ACTION (A)** or **INFORMATION (I)** at this time. Many have been reviewed by the Board at a previous meeting under the Discussion Items section of the agenda.

A.17	Appointment of Personnel Commissioner – Shane McLoud	32
A.18	Approval of the 2007-08 Second Interim Report	33-48
A.19	Appointment of the Firm of Nigro Nigro & White PC as District Auditor for Fiscal Years 2007-08 through 2009-10.....	49-51
A.20	Establish Position – Counselor – Early Childcare and Education Workforce Initiative	52
A.21	Establish Position – Mental Health Counselor (Pupil Services) – 60%	53-54
A.22	Establish Position – Speech Language Pathology Assistant (SLPA)	55-56
A.23	Approval of Additional Measure “BB” Projects and Direction to Staff Regarding Acceleration of the Program, Capitalization of Redevelopment Agency Funds, and Use of Interest Earnings.....	57-59
A.24	Approval of School Facility Standards	60-60b
A.25	Acceptance of Enrollment Projections and their Impact on the Measure “BB” Bond Program	61-61a
A.26	Planning of Edison Elementary Site – Measure “BB” Facilities Design Scope	62
A.27	Evaluate Potential to Design a Core Curriculum Area at John Adams Middle School for 6-8 Spanish Immersion Program – Measure “BB” Facilities Design.....	63

A.28	Approval to Proceed with Planning of the Olympic/Washington West-East Facilities, Pine Street/Special Ed Exit Plan, Special Ed Suite of Rooms – Measure “BB” Facilities Design.....	64-66c
A.29	Approval of District Technology Use Plan.....	67

XII. DISCUSSION ITEMS

These items are submitted for information (FIRST READING) and discussion. Action will generally be considered at the next regularly scheduled meeting of the Board.

D.01	DAC Mid-Year Written Reports.....	68-80
	Visual and Performing Arts DAC	
	Health and Safety DAC	
	Child Development Services DAC	
D.02	Update on SMMUSD’s Efforts to Improve Teaching and Learning in Mathematics.....	81
D.03	Memorandum of Understanding among Santa Monica-Malibu Unified School District (SMMUSD), Santa Monica-Malibu Education Foundation (SMMEF), and Santa Monica-Malibu Classroom Teachers Association (SMMCTA).....	82
D.04	Staffing Allocations and Reductions for the 2008-2009 School Year.....	83-84

XIII. INFORMATIONAL ITEMS

I.01	Mathematics Textbook Adoption	85
------	-------------------------------------	----

XIV. BOARD MEMBER ITEMS

These items are submitted by individual Board members for information or discussion, as per Board Policy 8320(b).

XV. REQUESTS BY MEMBERS OF THE PUBLIC OR DISTRICT ADVISORY COMMITTEES TO ADDRESS THE BOARD OF EDUCATION

These items are submitted by members of the public to address the Board of Education on a matter within the jurisdiction of the Board, as per Board Policy 8320(c). Requests must be submitted to the Superintendent in writing ten days before the Board meeting or prior to agenda planning, in accordance with the established agenda planning schedule, whichever is less. The written request will not exceed 500 words and will include, as an attachment, brief background information and the reason for the request.

XVI. CONTINUATION OF PUBLIC COMMENTS

A continuation of Section VIII, as needed. (If the number of persons wishing to address the Board of Education exceeds the time limit in section VIII, additional time will be provided in Section XVI, CONTINUATION OF PUBLIC COMMENTS.)

XVII. BOARD MEMBER COMMENTS

Board Member Comments is the section where a Board member may make a brief announcement or make a brief report on his or her own activities relative to Board business. There can be no discussion under “BOARD MEMBER COMMENTS.”

XVIII. FUTURE AGENDA ITEMS

Items for future consideration will be listed with the projected date of consideration. The Board of Education will be given any backup information available at this time.

XIX. CLOSED SESSION

The Board of Education will, if appropriate, adjourn to CLOSED SESSION to complete discussion on items listed for CLOSED SESSION following the regular business meeting.

XX. ADJOURNMENT

This meeting will adjourn to the next regularly scheduled meeting to be held on **Thursday, April 3, 2008, at 5:30 p.m.** in the **District Administrative Offices: 1651 16th Street, Santa Monica, CA.**

Meetings held at Santa Monica City Hall are broadcast live - City TV2, Cable Channel 16.

Meetings held at the District Office and in Malibu are taped and rebroadcast

in Santa Monica on CityTV2, Cable Channel 20 - Check TV listing.

Meetings are rebroadcast in Malibu on Government Access Ch. 3 every Saturday at 8pm.

SMMUSD Board of Education Meeting Schedule 2007-2008

Public Meetings begin at 5:30pm

July through December 2007					
Month	1 st Thursday	2 nd Thursday	3 rd Thursday	4 th Thursday	Special Note:
July		7/12 DO	7/19* DO		*Special Meeting
August		8/9 DO		8/23 DO	8/29: Board Retreat
September	9/6 DO			9/27 DO	9/4: Board Retreat 9/29: Closed Session
October	10/4 M		10/18 SM	10/25* DO	10/1: Brd Retreat 10/2: Special Mtg *Special Meeting
November	11/1 M		11/15 SM	11/30 WHERE (5th Thurs)	Thanksgiving 11/22-23
December		12/13 DO		winter break	12/10: Board Retreat
December 24 – 31: Winter Break					
January through June 2008					
January 1 – 4: Winter Break					
January	winter break		1/17 DO	1/31 WHERE (5th Thurs)	
February	2/7 M	2/11* DO	2/21 SM	2/26* DO 2/27* DO	*Special Meeting
March	3/5* DO	3/13 DO	spring break	spring break	*Special Meeting Stairway 3/6 & 3/7
March 17 – 28: Spring Break					
April	4/3 DO		4/17 SM		
May	5/1 M		5/15 SM	5/29 WHERE (5th Thurs)	
June	6/5 DO			6/26 DO	Last day of school 6/20

District Office (DO): 1651 16th Street, Santa Monica.
 Malibu City Council Chambers (M): 23815 Stuart Ranch Road, Malibu, CA
 Santa Monica City Council Chambers (SM): 1685 Main Street, Santa Monica.

**Santa Monica-Malibu Unified School District
Board of Education
March 13, 2008**

I CALL TO ORDER

A Roll Call

Oscar de la Torre – President
Jose Escarce – Vice President

Maria Leon-Vazquez
Ralph Mechur
Kelly Pye
Barry Snell
Kathy Wisnicki

Student Board Members

B Pledge of Allegiance

II CLOSED SESSION

TO: BOARD OF EDUCATION

ACTION
03/13/08

FROM: DIANNE TALARICO

RE: APPROVAL OF MINUTES

RECOMMENDATION NO. A.01

It is recommended that the Board of Education approve the following Minutes:

February 21, 2008

February 26, 2008

February 27, 2008

MOTION MADE BY:

SECONDED BY:

STUDENT ADVISORY VOTE:

AYES:

NOES:

CONSENT ITEMS

TO: BOARD OF EDUCATION

ACTION/CONSENT

03/13/08

FROM: DIANNE TALARICO / CHIUNG-SALLY CHOU / MAUREEN BRADFORD

RE: APPROVAL OF INDEPENDENT CONTRACTORS

RECOMMENDATION NO. A.02

It is recommended that the Board of Education enter into an agreement with the following Independent Contractors. These contracts are included in the 2007/2008 budget.

Contractor/ Contract Dates	Description	Site	Funding
<p><i>Correction on account number. Originally approved on 11/15/07</i></p> <p>Nancy Craig</p> <p>11/26/07 to 12/11/07</p> <p>Not to exceed: \$9,500</p>	<p>Conduct 5 days training in Differentiated Instruction for district administrators, elementary and middle school teachers</p>	<p>Educational Services</p>	<p><u>01-71400-0-11100-10000-5802-032-2560</u></p> <p><u>corrected account #</u></p>
<p><i>Correction on amount. Originally approved on 11/15/07</i></p> <p>On Point Technologies</p> <p>8/30/2007 to 6/30/2008</p> <p>CORRECTED AMOUNT: <u>Not to exceed: \$10,000</u></p>	<p>Training and integration and development of classroom lessons and enhanced teaching tools with the Mimio and Mimio Studio Software for teachers only</p>	<p>Saint Monica Elementary School</p>	<p>01-40350-0-11100-21000-5802-037-0300</p> <p>Title II</p>
<p>Marcela Avila</p> <p>2/1/08 to 3/7/08</p> <p>Not to exceed: \$300</p>	<p>Present at District English Learners Committee: Communicating with Your Adolescent</p>	<p>Educational Services</p>	<p>01-62860-0-47600-5802-035-1300</p> <p>ELAP</p>
<p>County of Los Angeles Sheriff's Department</p> <p>9/5/07 to 6/30/08</p> <p>Not to exceed: \$10,730.46</p>	<p>Success Through Awareness & Resistance (STAR) Program. A program to help students to be aware of and resist drugs</p>	<p>Malibu</p>	<p>01-90141-0-11100-10000-5802-010-4100</p>
<p>Center for Council Training</p> <p>9/1/07 to 6/20/08</p> <p>Not to exceed: \$3,840</p>	<p>Council students to learn attentive listening skills</p>	<p>Malibu</p>	<p>01-90141-0-11100-10000-5802-010-4100</p>
<p>Nancy L Bruski</p> <p>Wise Choice Guidance</p> <p>4/15/08 to 4/15/08</p> <p>Not to exceed: \$400</p>	<p>To provide a 2 hour workshop to preschool teachers on how to avoid over-reliance on discipline techniques</p>	<p>CDS</p>	<p><u>50%:</u> 12-52101-0-85000-10000-5802-070</p> <p><u>50%:</u> 12-94150-0-85000-10000-5802-070</p>

Hilary Rhodes 4/1/2007 to 3/1/2008 Not to exceed: \$5,000	To meet mandated requirement for annual evaluation	Samohi	01-73960-0-11100-10000-5802-015-4150
David McCrum 12/15/2007 to 3/15/2008 Not to exceed: \$12,000	To perform the duties of Technical Theatre Coordinator and other related duties.	Business Services: Theater Operations and Facility Permits	01-91180-0-81000-54000-5802-050-1500

MOTION MADE BY:
 SECONDED BY:
 STUDENT ADVISORY VOTE:
 AYES:
 NOES:

TO: BOARD OF EDUCATION

ACTION/CONSENT

03/13/08

FROM: DIANNE TALARICO / CHIUNG-SALLY CHOU / MAUREEN BRADFORD

RE: OVERNIGHT FIRD TRIP(S) 2007-2008

RECOMMENDATION NO. A.03

It is recommended that the Board of Education approve the special field trip(s) listed below for students for the 2007-2008 school year. No child will be denied due to financial hardship.

School Grade # students	Destination Dates of Trip	Principal/Teacher	Cost Funding Source	Subject	Purpose Of Field Trip
Lincoln 6/7 10	Washington DC 3/15/08 to 3/19/08	Shelly Ehrke	\$1,899 / paid for by parents and fund raising	History	Travel Club will spend the 1 st 5 days of Spring Break exploring the historical, cultural, and social significance of Washington DC

MOTION MADE BY:

SECONDED BY:

STUDENT ADVISORY VOTE:

AYES:

NOES:

TO: BOARD OF EDUCATION

ACTION/CONSENT

03/13/08

FROM: DIANNE TALARICO / JANECE L. MAEZ / PAT HO

RE: CONFERENCE AND TRAVEL APPROVAL/RATIFICATION

RECOMMENDATION NO. A.04

It is recommended that the Board of Education approve/ratify the following Requests for Absence on District Business (Conference and Travel) forms.

COMMENTS: Entries are alphabetical, by employee last name. In addition to the employee's name and site/location, each entry contains the following information: name, location and date (s) of the conference, complete account code, fund and program names, and the total estimated cost as provided by the site administrator. The average cost for substitute teachers is \$130/day. This figure is furnished for informational purposes and does not reflect the actual amount paid for an individual substitute.)

<u>NAME</u> <u>SITE</u> Account Number Fund – Resource Number	CONFERENCE NAME LOCATION DATE (S)	COST ESTIMATE
<u>BRIZUELA, Jose</u> Muir Elementary 01-73950-0-11100-10000-5220-005-4050 General Fund- Resource: School & Library Imprvmt.	CUE (Computer Using Education) 2008 Palm Springs, CA March 7, 2008	\$425 +1 Sub
<u>BRYANT, Cheryl</u> Human Resources No registration fee, employee to be reimbursed for mileage.	ACES Internet Forms Health And Membership Glendale, CA May 13, 2008	\$25 Mileage only
<u>BRYANT, Cheryl</u> Human Resources 01-00000-0-00000-74000-5220-025-1250 General Fund- Function: Personnel/ Human Resources	Benefits and Voluntary Deductions HRS District User Training Downey, CA February 26, 2008	\$30 Mileage Only
<u>CHACON, Martha</u> Santa Monica High 01-73960-0-11100-10000-5220-015-4150 General Fund- Resource: Discretionary BL-School Site	Closing Achievement Gap San Francisco, CA February 24-26, 2008	\$225 +1 Sub
<u>MAEZ, Jan</u> Business Services 01-00000-0-00000-73000-5220-050-1500 General Fund- Function: Business Services	Management of Employee Benefits Workshop Garden Grove, CA April 18, 2008	\$160
<u>MAEZ, Jan</u> Business Services 01-00000-0-00000-73000-5220-050-1500 General Fund- Function: Business Services	CASBO 2008 Anaheim, CA April 26 – 29, 2008	\$746

<u>PAULSON, Janet</u> Special Education 01-56400-0-00000-39000-5220-041-1400 General Fund- Resource: Medi-Cal Billing Option	Practical Therapy Techniques for Persistent Articulate Errors Pasadena, CA April 24, 2008	\$300
<u>PAULSON, Janet</u> Special Education 01-56400-0-00000-39000-5220-041-1400 General Fund- Resource: Medi-Cal Billing Option	Asperger Syndrome Strategies for Solving the Social Puzzle Pasadena, CA May 2, 2008	\$300

Adjustments (Preapproved expenses 10% in excess of approved costs that must be approved by Board/Changes in Personnel Attendance)		
NONE		

Group Conference and Travel: In-State <i>* a complete list of conference participants is on file in the Department of Fiscal Services</i>		
<u>EDWARDS, Bryant</u> + 8 Additional Staff Special Education 01-56400-0-00000-39000-5220-041-1400 General Fund- Resource: Medi-cal Billing Option	20 th Annual Occupational Science Symposium Los Angeles, CA March 7, 2008	\$1,358 TOTAL
<u>HARTSFIELD, Courtney</u> <u>RICE, Michelle</u> Santa Monica High 01-40350-0-11100-21000-5220-058-1300 General Fund- Resource: Title II Teacher Quality	Eagle Software Ontario, CA March 10, 2008	\$365 TOTAL
<u>HERNANDEZ, Jose</u> + 3 Additional Staff Lincoln Middle 01-73950-0-11100-10000-5220-012-4120 General Fund- Resource: Lottery-Instructional Material	AVID (Advancement Via Individual Determination) Awareness and Implementation Workshop Pico Rivera, CA February 27 – 28, 2008	\$1,300 TOTAL +4 Subs
<u>KINGSLEY, Kari</u> <u>YASUTOMI, Lisa</u> Special Education 01-00000-0-00000-74000-5220-025-1250 General Fund- Function: Personnel/Human Resources	Occupational Therapy Career Fair Los Angeles, CA April 21, 2008	\$125 TOTAL.
<u>MANGLE, Ruth</u> <u>CAREY, Will</u> Computer Services 01-00000-0-00000-77000-5220-054-2540 General Fund- Function: Data Processing Services	QSS User's Group Visalia, CA March 3 – 6, 2008	\$1,000 TOTAL
<u>MATTHEWS, Mike</u> + 1 Additional Staff Human Resources 01-00000-0-00000-74000-5220-025-1250 General Fund- Function: Personnel/Human Resources	CSUDH Education Employment Fair Carson, CA April 23, 2008	\$150 TOTAL

Out-of-State Conferences: Individual		
<u>GRILLO, Christopher</u> Santa Monica High 01-40350-0-11100-21000-2220-038-1300 General Fund- Resource: Title II Teacher Quality	NASPA (National Association of Student Personnel Administrators) Boston, MA March 8 – 11, 2008	\$1,000 TOTAL
<u>MCCRAY, Angela</u> Lincoln Middle 01-73950-0-11100-10000-5220-012-4120 General Fund- Resource: School & Library Imprvmnt.	56 th NSTA National Conference Boston, MA March 26 - 30, 2008	\$1, 100 TOTAL

Out-of-State Conferences: Group		
<u>NONE</u>		

MOTION MADE BY :
 SECONDED BY :
 STUDENT ADVISORY VOTE :
 AYES :
 NOES :

TO: BOARD OF EDUCATION

ACTION/MAJOR

03/13/08

FROM: DIANNE TALARICO / TIMOTHY R. WALKER / RUTH VALADEZ

RE: APPROVAL OF SPECIAL EDUCATION CONTRACTS - 2007-2008

RECOMMENDATION NO. A.05

It is recommended that the Board of Education approve the following Special Education Contracts for fiscal year 2007-2008 as follows:

NPS/NPA

2007-2008 Budget 01-65000-0-57500-11800-5825-043-1400

Nonpublic School/Agency	Student DOB	Service Description	Contract Number	Cost Not to Exceed
Hear to Talk - contract increase	1/1/99	Auditory support	#5 - UC08032	\$ 260
Smart Start - contract & date increase	5/6/94	Behavior Therapy	#12 - UC08039	\$ 8,990
Summit Speech - contract increase	Various	Speech Therapy	#28 - UC08111	\$ 1,519
Hear to Talk	1/1/99	Auditory support	#54	\$ 1,300
Therapy West	3/29/98	Occupational Therapy Assmt	#55	\$ 180
My Therapy Company	Various	Speech Therapy	#56	\$ 31,850
Devereux Foundation - contract increase	10/5/89	NPS - transportation	#3-UC08003	\$ 600
Carousel School - contract increase	10/11/93	NPS - Speech Therapy	#30 - UC08113	\$ 5,880
Vista Del Mar	12/2/95	NPS	#43	\$ 16,563
Provo Canyon	4/29/95	NPS	#44	\$ 15,200
Heritage School	2/6/92	NPS	#45	\$ 11,220

Amount Budgeted NPS/NPA 07/08	\$ 3,000,000
Prior Board Authorization as of 2/21/08	\$ 2,567,656
Prior Board Authorization for Instructional Aides	\$ 68,145
Prior Board Authorization for Speech Therapy	\$ 97,370
Prior Board Authorization for Occupational Therapy	\$ 103,310
Balance	\$ 163,519

Positive Adjustment (See Below)	\$ 270
---------------------------------	--------

Total Amount for Speech Therapy	\$ 33,369
Total Amount for these Contracts	\$ 60,193

Balance	\$ 70,227
---------	-----------

Adjustment					
NPA/NPS Budget 01-65000-0-57500-11800-5125-043-1400					
There has been a reduction in authorized expenditures of NPS/NPA contracts for FY 2007-08 in the amount of \$ 270 as of 3/13/08					
Instructional Consultant	Service Description	Contract Number	Reduce (R) Eliminate (E)	Adjusted Amount	Comment
Can Do Kids	Occupational Therapy Assmt	#52 - UC08267	E	\$ 270	

Instructional Consultants
2006-2007 Budget 01-65000-0-57500-11900-5802-043-1400

Instructional Consultant	Student DOB	Service Description	Contract Number	Cost Not to Exceed
Lisa White-Ulrich	3/7/02	Physical Therapy	#78	\$ 300

Amount Budgeted Instructional Consultants 07/08	\$ 350,000
Prior Board Authorization as of 2/21/08	\$ 441,175
Prior Board Authorization for Occupational Therapy	\$ 52,297
Balance	\$ -143,472
 Total Amount for these Contracts	 \$ 300
Balance	\$ -143,772

Adjustment					
Instructional Consultant Budget 01-65000-0-57500-11900-5802-043-1400					
There has been a reduction in authorized expenditures of Instructional Consultants contracts for FY 2007/08 in the amount of \$0 as of 03/13/08					
Instructional Consultant	Service Description	Contract Number	Reduce (R) Eliminate (E)	Adjusted Amount	Comment

Non-Instructional Consultants
2007-2008 Budget 01-65000-0-57500-11900-5890-043-1400

Non-Instructional Consultant	Student DOB	Service Description	Contract Number	Cost Not to Exceed
Parent Reimbursement	10/20/92	Behavior Therapy	#20	\$ 1,068

Amount Budgeted Non-Instructional Consultants 07/08	\$ 225,000
Prior Board Authorization as of 2/21/08	\$ 145,507
Balance	\$ 79,493
 Total Amount for these Contracts	 \$ 1,068
Balance	\$ 78,425

Legal Contractor	Service Description	Contract Number	Cost Not to Exceed
Atkinson, Andelson, Loya, Rudd & Romo contract increase	Legal services	#1 - UC08026	\$ 10,000

Amount Budgeted Legal Services 07/08		\$ 195,000
Prior Board Authorization as of 2/21/08		\$ 200,000
	Balance	\$ -5,000
Total Amount for these Contracts		\$ 10,000
	Balance	\$ -15,000

COMMENT: According to the Education Code SEC.21 Section 56342, prior to recommending a new or continued placement in a non-public, non-sectarian school, the Individualized Education Program (IEP) Team must submit the proposed recommendation to the local governing board for its review and recommendation regarding the cost of such placement.

The recommendation for these severely handicapped students are made by the District IEP Teams in accordance with State and Federal laws. The mandates of IDEA require non-public school services be provided at no expense to parents if there is not an appropriate public school program available. Funding to come from a SELPA-wide non-public school/non-public agency reserve account.

MOTION MADE BY:
 SECONDED BY:
 STUDENT ADVISORY VOTE:
 AYES:
 NOES:

TO: BOARD OF EDUCATION

ACTION/CONSENT

03/13/08

FROM: DIANNE TALARICO / JANECE L. MAEZ / VIRGINIA I. HYATT

RE: AWARD OF PURCHASE ORDERS - 2007-2008

RECOMMENDATION NO. A.06

It is recommended that the Board of Education approve the following Purchase Orders and Changed Purchase Orders from February 12, 2008, through March 3, 2008, for fiscal /08.

MOTION MADE BY:

SECONDED BY:

STUDENT ADVISORY VOTE:

AYES:

NOES:

SANTA MONICA-MALIBU UNIFIED SCHOOL DISTRICT
PURCHASE ORDERS TO BE APPROVED AT THE BOARD MEETING OF MARCH 13, 2008

U-GENERAL FUND,UNRESTRICTED R-GENERAL FUND,RESTRICTED A-ADULT ED CD-CHILD DEVELOPMENT F-CAFETERIA
SF-SPECIAL FINANCING (FLEX) EX-PROP ES and X D-DEVELOPER FEES SR-SPECIAL RESERVE CAPITAL
DF-DEFERRED MAINTENANCE SM-STATE MODERNIZATION

PO NO.	VENDOR	DESCRIPTION	LOCATION	AMOUNT	
<u>*** CHANGED PURCHASE ORDERS ***</u>					
815175	GBC/EDUCATION DEPARTMENT	CHANGE ORDER ADDL FUNDS	MALIBU HIGH SCHOOL	88.20	R
815391	WEST COAST MICROSCOPE SERVICE	INCORRECT PRICING	SANTA MONICA HIGH SCHOOL	83.00	R
				** CHANGED PURCHASE ORDERS TOTAL:	171.20
<u>*** NEW PURCHASE ORDERS ***</u>					
815429	A & R WHOLESALE DISTRIBUTORS	OPEN PO FOR SNACK FOOD	SAMOHI STUDENT STORE	2,000.00	U
815083	A E SCHMIDT CO INC	DODGER DIRT SAMOHI BASEBALL	BUSINESS SERVICES	1,135.54	R
815056	ACCREDITING COMMISSION	MEMBERSHIP FEE	OLYMPIC CONTINUATION SCHOOL	650.00	U
814862	ACHIEVEMENT PRODUCTS	Resources for Psychologist	ROOSEVELT ELEMENTARY SCHOOL	936.56	R
815127	AMERICAN COUNCIL ON EDUCATION	GED EXAM PROCESSING FEE	ADULT EDUCATION CENTER	285.24	A
815095	ANACA TECHNOLOGIES INC	CAREER CRUISING SOFTWARE	SPECIAL ED SPECIAL PROJECTS	3,718.39	R
815198	APPERSON PRINT MANAGEMENT SVCS	TESTING ANSWER SHEETS	SANTA MONICA HIGH SCHOOL	178.61	R
814884	APPLE COMPUTER CORP	IMACS/GIFT/PE	JOHN ADAMS MIDDLE SCHOOL	2,368.51	R
815093	APPLE COMPUTER CORP	LAPTOP COMPUTER/ARTS GRANT	JOHN ADAMS MIDDLE SCHOOL	1,304.41	R
815121	APPLE COMPUTER CORP	COMPUTERS	SANTA MONICA HIGH SCHOOL	6,711.10	R
815202	APPLE COMPUTER CORP	COMPUTER/VOCAL MUSIC/PTSA	JOHN ADAMS MIDDLE SCHOOL	1,184.26	R
815203	APPLE COMPUTER CORP	COMPUTER/HUMANITIES/PTSA	JOHN ADAMS MIDDLE SCHOOL	1,304.41	R
815215	APPLE COMPUTER CORP	COMPUTERS	LINCOLN MIDDLE SCHOOL	24,075.51	R
815382	APPLE COMPUTER CORP	LAPTOP/MOBILE SMARTBOARD/SI	JOHN ADAMS MIDDLE SCHOOL	1,304.41	R
815393	APPLE COMPUTER CORP	Apple Compu/Data Project adapt	JOHN ADAMS MIDDLE SCHOOL	106.84	R
815185	ARROWHEAD MOUNTAIN SPRING	OPEN ORDER/DRINKING WATER	CHILD DEVELOPMENT CENTER	200.00	CD
815173	ATLANTIC EXPRESS OF LA INC	CHARTER BUSES/8TH GR TRIP/PTSA	JOHN ADAMS MIDDLE SCHOOL	725.00	R
815183	ATLAS SYSTEMS INC	NON-INSTRUCTIONAL/TELEPHONE	CHILD DEVELOPMENT CENTER	99.93	CD
814932	AVON CAR RENTAL	TRANSPORTATION	SANTA MONICA HIGH SCHOOL	8,000.00	U
815187	B & H PHOTO	AV EQUIPMENT	SANTA MONICA HIGH SCHOOL	322.22	R
815334	B-LINE ELECTRIC INC	POWER TO FRONT DOOR-DISTRICT	FACILITY MAINTENANCE	757.00	R
815237	BARNES & NOBLE/SANTA MONICA	OPEN ORDER/BOOKS/LANG ARTS	JOHN ADAMS MIDDLE SCHOOL	133.00	R
814888	BEST BUY	TV/DANCE/ARTS GRANT	JOHN ADAMS MIDDLE SCHOOL	1,028.38	R
814786	BEST BUY - CULVER CITY	TV WALL MOUNTS	JOHN MUIR ELEMENTARY SCHOOL	160.14	R
815091	BMC INC	TONER FOR FAX MACHINE/ADMIN	JOHN ADAMS MIDDLE SCHOOL	93.52	U
815196	BMC INC	FAX TONER	SANTA MONICA HIGH SCHOOL	384.71	U
815030	BOB BAKER MARIONETTES	FIELD TRIP/BOB BAKER MARIONETT	CHILD DEVELOPMENT CENTER	240.00	CD
815032	BOB BAKER MARIONETTES	FIELD TRIP/BOB BAKER MARIONETT	CHILD DEVELOPMENT CENTER	210.00	CD
815099	BOB BAKER MARIONETTES	FIELD TRIP/BOB BAKER MANONETTE	CHILD DEVELOPMENT CENTER	390.00	CD
815086	BORDERS BOOKS & MUSIC	CLASSROOM BOOK SET	JOHN ADAMS MIDDLE SCHOOL	197.02	R
815029	BRASS BELL ENTERPRISES	RECORDER BOOKS	CURRICULUM AND IMC	5,069.25	R
813980	BURKE,BRIAN	REIMBURSEMENT	COMMUNITY DAY SCHOOL	184.81	R
814579	BURKE,BRIAN	SCHOOL SUPPLIES	COMMUNITY DAY SCHOOL	700.82	R
815390	BURKE,BRIAN	SUPPLIES FOOD REWARDS	COMMUNITY DAY SCHOOL	735.19	R
815218	BUSINESS PRINTING AND IMAGING	BUSINESS CARDS FOR GARDEN COOR	FOOD SERVICES	31.85	F
815227	BUSINESS PRINTING AND IMAGING	BUSINESS CARDS	CHILD DEVELOPMENT CENTER	31.85	CD
815361	BUSINESS PRINTING AND IMAGING	BUSINESS CARDS/CAREY UPTON	BUSINESS SERVICES	31.85	R
815256	C.O.D. WHOLESALE	ROP SUPPLIES	R O P	146.21	R
815132	CANON BUSINESS SOLUTIONS-WEST	COPIER OVERAGES	OLYMPIC CONTINUATION SCHOOL	1,423.99	R
815191	CHAMPION CHEMICAL	CUSTODIAL SUPPLIES	PT DUME ELEMENTARY SCHOOL	259.80	U
815290	CHAMPION CHEMICAL	CUSTODIAL SUPPLIES	MCKINLEY ELEMENTARY SCHOOL	90.93	R
815084	CHEVRON U.S.A. INC.	FUEL CARD #71 SPARE 2	FACILITY MAINTENANCE	538.99	R
815128	CHILDRENS BOOK WORLD	OPEN ORDER/INST SUP/VALUED YTH	JOHN ADAMS MIDDLE SCHOOL	500.00	R
814995	COMPLETE BUSINESS SYSTEMS	COPIER SUPPLIES	MCKINLEY ELEMENTARY SCHOOL	1,531.62	R

SANTA MONICA-MALIBU UNIFIED SCHOOL DISTRICT
PURCHASE ORDERS TO BE APPROVED AT THE BOARD MEETING OF MARCH 13, 2008

U-GENERAL FUND, UNRESTRICTED R-GENERAL FUND, RESTRICTED A-ADULT ED CD-CHILD DEVELOPMENT F-CAFETERIA
SF-SPECIAL FINANCING (FLEX) EX-PROP ES and X D-DEVELOPER FEES SR-SPECIAL RESERVE CAPITAL
DF-DEFERRED MAINTENANCE SM-STATE MODERNIZATION

PO NO.	VENDOR	DESCRIPTION	LOCATION	AMOUNT	
815414	COMPLETE BUSINESS SYSTEMS	COPIER SUPPLIES/ADMIN	JOHN ADAMS MIDDLE SCHOOL	62.13	U
815452	COMPLETE BUSINESS SYSTEMS	COPIER SUPPLIES	PT DUME ELEMENTARY SCHOOL	1,220.77	R
814939	CORPORATE EXPRESS	TESTING SUPPLIES	SANTA MONICA HIGH SCHOOL	297.06	R
815035	CORPORATE EXPRESS	CLASSROOM SUPPLIES	SANTA MONICA HIGH SCHOOL	840.45	R
815053	CORPORATE EXPRESS	Open PO for copy paper	FRANKLIN ELEMENTARY SCHOOL	2,000.00	R
815094	CORPORATE EXPRESS	OPEN ORDER/OFFICE SUPPLIES	SPECIAL EDUCATION REGULAR YEAR	3,500.00	R
815210	CORPORATE EXPRESS	TABLE/CONFERENCE ROOM	DISTRICT-WIDE	318.26	U
815228	CORPORATE EXPRESS	OFFICE SUPPLIES	BUSINESS SERVICES	100.00	R
815263	CORPORATE EXPRESS	OPEN ORDER SUPPLIES	PURCHASING/WAREHOUSE	300.00	U
815284	CORPORATE EXPRESS	OPEN ORDER/CLASSROOM SUPPLIES	SANTA MONICA HIGH SCHOOL	100.00	R
815350	CORPORATE EXPRESS	GEN OFFICE SUPPLIES	STATE AND FEDERAL PROJECTS	270.63	R
815383	CORPORATE EXPRESS	OPEN ORDER/COPY PAPER	JOHN ADAMS MIDDLE SCHOOL	728.00	U
815396	CORPORATE EXPRESS	CAHSEE SUPPLIES	OLYMPIC CONTINUATION SCHOOL	108.28	R
815400	CORPORATE EXPRESS	OPEN ORDER/INST SUP/ELL	JOHN ADAMS MIDDLE SCHOOL	69.73	R
815071	CORPORATE EXPRESS/US OFFICE	COPIER PAPER	OLYMPIC CONTINUATION SCHOOL	152.09	R
815113	CORPORATE EXPRESS/US OFFICE	OFFICE SUPPLIES	PERSONNEL SERVICES	1,000.00	U
815114	CORPORATE EXPRESS/US OFFICE	OPEN PURCHASE ORDER	MALIBU HIGH SCHOOL	800.00	R
815115	CORPORATE EXPRESS/US OFFICE	SCHOOL SITE SUPPLIES	PERSONNEL SERVICES	1,177.18	U
815286	CORPORATE EXPRESS/US OFFICE	TWO DRAWER FILE CABINET	CHILD DEVELOPMENT CENTER	268.09	CD
815283	CREATION ENGINE LLC	SOFTWARE/PHOTO CLASS	OLYMPIC CONTINUATION SCHOOL	112.84	R
815306	CREATIVE EDUCATIONAL SVCS	SUBSCRIPTION	SANTA MONICA HIGH SCHOOL	146.14	R
815194	CYBERGUYS COMPUTER ACCESSORIES	PORT - CORE 2	SMASH SCHOOL	37.31	R
815403	DEMCO INC	library supplies	JOHN MUIR ELEMENTARY SCHOOL	381.59	R
815302	DIAMOND CORING	OPEN ORDER-CONCRETE CORING	FACILITY MAINTENANCE	1,000.00	R
815064	DIAZ, AIDA	REIMBURSEMENT FOOD	STATE AND FEDERAL PROJECTS	108.31	R
815131	DICK BLICK	ART MATERIAL	OLYMPIC CONTINUATION SCHOOL	46.11	R
815248	DISNEYLAND RESORTS	DISNEY MAGIC MUSIC DAYS TICKET	CURRICULUM AND IMC	12,758.00	R
815303	DOALL INDUSTRIAL SUPPLY	CUSTODIAL SUPPLIES GLOVES	FACILITY OPERATIONS	63.17	U
815211	DRESHER, PAM	PROFESSIONAL BOOKS / COTSEN	WILL ROGERS ELEMENTARY SCHOOL	94.75	R
815419	DYNAVOX SYSTEMS LLC	MINIMO DEVICE REPAIR	SPECIAL EDUCATION REGULAR YEAR	290.85	R
815144	EMC PUBLISHING	FRENCH TEXTBOOKS	MALIBU HIGH SCHOOL	1,838.48	R
815074	EVALUMETRICS INC	Pre-ID FitGram Tests	CURRICULUM AND IMC	1,477.96	U
814885	FAST DEER BUS CHARTER INC	CHARTER BUS/CATALINA/SCI MAG	JOHN ADAMS MIDDLE SCHOOL	1,844.44	R
815317	FEDEX	OTHER OPERATING EXPENSES	BOE/SUPERINTENDENT	400.00	U
815244	FLINN SCIENTIFIC INC	SCIENCE CLASS SUPPLIES	SANTA MONICA HIGH SCHOOL	1,736.09	R
815425	FLINN SCIENTIFIC INC	SCIENCE SUPPLIES	SANTA MONICA HIGH SCHOOL	305.27	R
815119	FOLLETT EDUCATIONAL SERVICES	CALCULUS BOOKS	MALIBU HIGH SCHOOL	646.31	R
815146	FOLLETT EDUCATIONAL SERVICES	TEACHER EDITION MATH BOOKS	MALIBU HIGH SCHOOL	157.85	R
815137	FOLLETT LIBRARY BOOK CO	INSTRUCTIONAL SUPPLIES	FRANKLIN ELEMENTARY SCHOOL	2,000.00	R
815220	FOLLETT LIBRARY BOOK CO	Library Books	CABRILLO ELEMENTARY SCHOOL	1,441.18	R
814715	GALE SUPPLY CO	CUSTODIAL SUPPLIES	SANTA MONICA HIGH SCHOOL	1,941.66	U
814864	GALE SUPPLY CO	CUSTODIAL SUPPLIES	CHILD DEVELOPMENT CENTER	583.14	CD
814878	GALE SUPPLY CO	CUSTODIAL SUPPLIES	LINCOLN MIDDLE SCHOOL	1,823.47	R
815001	GALE SUPPLY CO	CUSTODIAL SUPPLIES	CHILD DEVELOPMENT CENTER	768.03	CD
815015	GALE SUPPLY CO	VACUUMS	CHILD DEVELOPMENT CENTER	730.69	CD
815075	GALE SUPPLY CO	CUSTODIAL SUPPLIES	FRANKLIN ELEMENTARY SCHOOL	794.01	U
815087	GALE SUPPLY CO	CUSTODIAL SUPPLIES	WEBSTER ELEMENTARY SCHOOL	429.43	R
815089	GALE SUPPLY CO	CUSTODIAL SUPPLIES	ROOSEVELT ELEMENTARY SCHOOL	715.42	U
815110	GALE SUPPLY CO	CUSTODIAL SUPPLIES	ADULT EDUCATION CENTER	537.79	A
815180	GALE SUPPLY CO	CUSTODIAN SUPPLIES	EDISON ELEMENTARY SCHOOL	655.94	U
815181	GALE SUPPLY CO	CUSTODIAL SUPPLIES	CHILD DEVELOPMENT CENTER	706.82	CD

SANTA MONICA-MALIBU UNIFIED SCHOOL DISTRICT
PURCHASE ORDERS TO BE APPROVED AT THE BOARD MEETING OF MARCH 13, 2008

U-GENERAL FUND, UNRESTRICTED R GENERAL FUND, RESTRICTED A-ADULT ED CD-CHILD DEVELOPMENT F-CAFETERIA
SF-SPECIAL FINANCING (FLEX) EX-PROP ES and X D-DEVELOPER FEES SR-SPECIAL RESERVE CAPITAL
DF-DEFERRED MAINTENANCE SM-STATE MODERNIZATION

PO NO.	VENDOR	DESCRIPTION	LOCATION	AMOUNT	
815201	GALE SUPPLY CO	Custodial Supplies	ROOSEVELT ELEMENTARY SCHOOL	125.07	U
815204	GALE SUPPLY CO	CUSTODIAL SUPPLIES/PTSA	JOHN ADAMS MIDDLE SCHOOL	175.91	R
815225	GALE SUPPLY CO	CUSTODIAL SUPPLIES	CHILD DEVELOPMENT CENTER	706.82	CD
815254	GALE SUPPLY CO	CUSTODIAL SUPPLIES	WEBSTER ELEMENTARY SCHOOL	171.79	R
815264	GALE SUPPLY CO	CUSTODIAL SUPPLIES	MCKINLEY ELEMENTARY SCHOOL	1,087.91	R
815270	GALE SUPPLY CO	CUSTODIAL SUPPLIES	GRANT ELEMENTARY SCHOOL	592.99	U
815385	GALE SUPPLY CO	CUSTODIAL SUPPLIES	CHILD DEVELOPMENT CENTER	749.74	CD
815439	GALE SUPPLY CO	CUSTODIAL SUPPLIES	CABRILLO ELEMENTARY SCHOOL	644.19	U
815120	GATEWAY 2000 MAJOR ACCOUNTS	COMPUTER	PERSONNEL SERVICES	707.74	U
815176	GATEWAY 2000 MAJOR ACCOUNTS	COMPUTERS-THEATRE OPERATIONS	BUSINESS SERVICES	4,519.86	R
815179	GATEWAY 2000 MAJOR ACCOUNTS	COMPUTERS	LINCOLN MIDDLE SCHOOL	6,502.36	R
815229	GATEWAY 2000 MAJOR ACCOUNTS	COMPUTER-OPERATIONS	FACILITY MAINTENANCE	808.04	R
815247	GATEWAY 2000 MAJOR ACCOUNTS	COMPUTER	PURCHASING/WAREHOUSE	2,198.08	U
815259	GATEWAY 2000 MAJOR ACCOUNTS	LAPTOP	BUSINESS SERVICES	1,980.68	U
815372	GBC/EDUCATION DEPARTMENT	LAMINATING FILM	EDISON ELEMENTARY SCHOOL	113.66	U
815080	GEOMATRIX CONSULTANTS	CONSULT STORMWATER PERMIT	FACILITY MAINTENANCE	1,200.00	U
815249	GITTER, RANDALL	REIMBURSE FOR EXPENSES	SAINT ANNE'S PRIVATE SCHOOL	95.99	R
815351	GOULD, JOHN T	INST MATERIALS	STATE AND FEDERAL PROJECTS	74.69	R
815348	GREAT SOURCE EDUCATION GROUP	DWA books for Teachers	STATE AND FEDERAL PROJECTS	711.61	R
815431	HARALAMBOS BEVERAGE COMPANY	OPEN ORDER FOR DRINKS	SAMOHI STUDENT STORE	2,500.00	U
815199	HEINEMANN	BOOKS FOR TEACHERS, CORES 2&3	SMASH SCHOOL	262.41	R
815347	HEINEMANN	DWA materials for teachers	STATE AND FEDERAL PROJECTS	527.64	R
815381	HENRY RADIO INC	BATTERY/SECURITY RADIO/PTSA	JOHN ADAMS MIDDLE SCHOOL	153.60	R
815337	HILLYARD FLOOR CARE SUPPLY	CUSTODIAL SUPPLIES	SANTA MONICA HIGH SCHOOL	620.27	U
815097	HOME DEPOT- L.A.	OPEN ORDER/SCIENCE PROJECTS	CHILD DEVELOPMENT CENTER	1,200.00	CD
815031	IMED	VISUAL PRESENTER/AV CART	JOHN ADAMS MIDDLE SCHOOL	868.54	R
815186	IMED	AV EQUIPMENT	SANTA MONICA HIGH SCHOOL	1,400.35	R
815217	IMED	LCD Projector	CURRICULUM AND IMC	739.77	U
815336	IMED	Wall/Ceiling Screen	ROOSEVELT ELEMENTARY SCHOOL	69.41	R
815433	IMED	AV EQUIPMENT	SANTA MONICA HIGH SCHOOL	1,719.88	R
815436	IMED	ELMO DOCUMENT CAMERA	CABRILLO ELEMENTARY SCHOOL	1,150.73	R
815213	INDUSTRIAL SERVICES INC	EQUIPMENT RENTAL	SANTA MONICA HIGH SCHOOL	75.00	R
815365	INTELLI-TECH	Flashdrives	ROOSEVELT ELEMENTARY SCHOOL	242.48	R
815060	JAROCH, KATHERINE KRAMER	REIMBURSEMENT TESTING FEES	STATE AND FEDERAL PROJECTS	294.00	R
815231	KAPLAN SCHOOL SUPPLY CORP	INSTRUCTIONAL/TOYS	CHILD DEVELOPMENT CENTER	566.77	CD
815066	L.A. COUNTY OFFICE OF ED	CTEL TCHR RESOURCE & MATERIALS	STATE AND FEDERAL PROJECTS	3,000.00	R
815058	LACOE	PAY ATTACHED INVOICE LACOE	STATE AND FEDERAL PROJECTS	23,333.33	R
815163	LACOE	PAY LACOE INVOICE	STATE AND FEDERAL PROJECTS	1,000.00	R
815238	LAKESHORE (PICK UP ONLY)	OPEN ORDER/INST SUP/SPEC ED	JOHN ADAMS MIDDLE SCHOOL	50.00	R
815321	LEGAL BOOK DISTRIBUTORS	BOOKS FOR PRINCIPALS	SANTA MONICA HIGH SCHOOL	438.82	U
815318	LUNCHBYTE SYSTEMS INC	07/08 NUTRIKIDS UPDATE	FOOD SERVICES	209.85	F
815358	M & M PAPER CO.	CARD STOCK/NCR/XEROX PAPER	PRINTING SERVICES	1,460.94	U
815101	MAC SOLUTIONS	COMPUTER SUPPLIES	MCKINLEY ELEMENTARY SCHOOL	69.70	R
815063	MATTHEWS, JILL SCHEDING	REIMBURSEMENT/FOOD	STATE AND FEDERAL PROJECTS	50.25	R
815034	MEDCO SUPPLY CO	HEALTH & SAFETY/GLOVES	CHILD DEVELOPMENT CENTER	293.36	CD
815287	MERION PUBLICATIONS INC	ADVERTISING FOR O THERAPISTS	PERSONNEL COMMISSION	795.00	U
815042	MITTEL'S ART SUPPLY	ART SUPPLIES	SANTA MONICA HIGH SCHOOL	900.00	R
815251	MITTEL'S ART SUPPLY	OPEN ORDER/INST SUP/ART GRANT	JOHN ADAMS MIDDLE SCHOOL	200.00	R
815039	MONARCH BUS. FORMS/STRATACOM	PRINTED ENVELOPES	SANTA MONICA HIGH SCHOOL	357.23	R
815245	MONARCH BUS. FORMS/STRATACOM	VISITOR BADGES	STUDENT SERVICES	2,462.69	U
815233	NASCO WEST - MODESTO	NON-INSTRUCTIONAL/BENCHE	CHILD DEVELOPMENT CENTER	209.41	CD

SANTA MONICA-MALIBU UNIFIED SCHOOL DISTRICT
PURCHASE ORDERS TO BE APPROVED AT THE BOARD MEETING OF MARCH 13, 2008

U-GENERAL FUND, UNRESTRICTED R-GENERAL FUND, RESTRICTED A-ADULT ED CD-CHILD DEVELOPMENT F-CAFETERIA
SF-SPECIAL FINANCING (FLEX) EX-PROP ES and X D-DEVELOPER FEES SR-SPECIAL RESERVE CAPITAL
DF-DEFERRED MAINTENANCE SM-STATE MODERNIZATION

PO NO.	VENDOR	DESCRIPTION	LOCATION	AMOUNT	
815295	NASCO WEST - MODESTO	CORE 1 CLASSROOM SUPPLIES	SMASH SCHOOL	733.58	R
815380	NATIONAL COUNCIL OF TEACHERS	INST SUP/EQUITY	JOHN ADAMS MIDDLE SCHOOL	425.17	R
815427	ODWALLA INC	OPEN PO FOR ODWALLA PRODUCTS	SAMOHI STUDENT STORE	2,000.00	U
815236	OFFICE MAX	COPIER PAPER	MALIBU HIGH SCHOOL	2,000.00	R
815413	OFFICE MAX	xerox paper	WEBSTER ELEMENTARY SCHOOL	1,082.50	U
815116	POSTMASTER-MALIBU	POSTAGE STAMPS	MALIBU HIGH SCHOOL	205.00	U
815118	POSTMASTER-MALIBU	BULK MAIL ORDER	MALIBU HIGH SCHOOL	517.50	U
815192	POSTMASTER-SANTA MONICA	POSTAGE	PT DUME ELEMENTARY SCHOOL	147.60	U
815356	POSTMASTER-SANTA MONICA	STAMPS	OLYMPIC CONTINUATION SCHOOL	287.00	U
815407	POSTMASTER-SANTA MONICA	US POSTAL STAMPS	CHILD DEVELOPMENT CENTER	615.00	CD
815182	PRIORITY MAILING SYSTEMS INC	RATE CHANGE CHIP	PURCHASING/WAREHOUSE	243.56	U
815257	QUALITY RUBBER STAMPS	ROP SUPPLIES	R O P	140.45	R
815246	RALPH'S	SUPPLIES	MCKINLEY ELEMENTARY SCHOOL	500.00	R
814765	RAYVERN LIGHTING	FLOURSCENT LAMPS	MALIBU HIGH SCHOOL	174.55	U
815002	RAYVERN LIGHTING	LAMP, FLOURSCENT	CHILD DEVELOPMENT CENTER	349.11	CD
815341	RAYVERN LIGHTING	lightbulbs	WEBSTER ELEMENTARY SCHOOL	316.96	R
814624	REES ELECTRONICS OFFICE	CANON COPIER CARTRIDGE	SPECIAL EDUCATION REGULAR YEAR	72.79	R
815045	REES ELECTRONICS OFFICE	COPIER	SANTA MONICA HIGH SCHOOL	614.29	R
815046	REES ELECTRONICS OFFICE	COPIER	SANTA MONICA HIGH SCHOOL	614.29	R
815138	REES ELECTRONICS OFFICE	Open PO for Copier Service	SPECIAL EDUCATION REGULAR YEAR	108.25	R
815296	RICOH BUSINESS SOLUTIONS	COPIER SUPPLIES	SANTA MONICA HIGH SCHOOL	454.65	U
815323	ROSE'S BOILER WORKS	BOILER REPAIR-MHS MUSIC/CAFE	FACILITY MAINTENANCE	700.00	R
814857	SAMY'S CAMERA SHOP	CAMERAS	CHILD DEVELOPMENT CENTER	2,618.40	CD
815401	SANTA MONICA BAY PHYSICIANS	Driver Physicals	TRANSPORTATION	260.00	R
815327	SANTA MONICA MUN BUS LINES	BUS TOKENS	COMMUNITY DAY SCHOOL	75.00	R
815432	SANTA MONICA MUN BUS LINES	STUDENT BUS CARDS	SAMOHI STUDENT STORE	2,000.00	U
815267	SCHOLASTIC MAGAZINES	MAGAZINE SUBSCRIPTION	SANTA MONICA HIGH SCHOOL	92.65	R
815397	SCHOOL NURSE SUPPLY INC	Health Supplies	HEALTH SERVICES	352.56	U
815275	SCHOOL SAVERS	STUDENT CALCULATORS	SMASH SCHOOL	139.58	R
815292	SCHOOL SAVERS	GRAPHING CALCULATOR OVERHEAD	SANTA MONICA HIGH SCHOOL	343.36	R
815079	SCHOOL SERVICES OF CALIFORNIA	SABRE REPORT 2006-07	BUSINESS SERVICES	200.00	U
815331	SCHOOL SPECIALTY INC	CLASSROOM SUPPLIES	MCKINLEY ELEMENTARY SCHOOL	2,566.72	R
815055	SCOTIA CONSULTING SERVICES	DSA INSPECTION SVC	PROP "X" STAND ALONE PROJECTS	3,000.00	EX
815451	SEA WORLD	5TH GRADE FIELD TRIP	PT DUME ELEMENTARY SCHOOL	16,530.00	R
815026	SEHI COMPUTER PRODUCTS	LCD PROJECTOR BULBS	JOHN ADAMS MIDDLE SCHOOL	854.09	U
815036	SEHI COMPUTER PRODUCTS	INK CARTRIDGES	SANTA MONICA HIGH SCHOOL	251.77	R
815054	SEHI COMPUTER PRODUCTS	PRINTER CARTRIDGE	ROOSEVELT ELEMENTARY SCHOOL	118.60	R
815062	SEHI COMPUTER PRODUCTS	TONER CARTRIDGES	SANTA MONICA HIGH SCHOOL	442.05	U
815117	SEHI COMPUTER PRODUCTS	COMPUTER PRINTERS	PERSONNEL SERVICES	318.41	U
815122	SEHI COMPUTER PRODUCTS	LASER PRINTERS	MALIBU HIGH SCHOOL	544.54	R
815223	SEHI COMPUTER PRODUCTS	LCD PROJECTOR LIGHT BULBS	EDISON ELEMENTARY SCHOOL	362.23	R
815262	SEHI COMPUTER PRODUCTS	TONER	SANTA MONICA HIGH SCHOOL	340.38	U
815333	SEHI COMPUTER PRODUCTS	GENERAL SUPPLIES AND MATERIALS	OLYMPIC CONTINUATION SCHOOL	385.80	R
815359	SEHI COMPUTER PRODUCTS	COMPUTERS	SANTA MONICA HIGH SCHOOL	1,317.58	R
815362	SEHI COMPUTER PRODUCTS	INK CARTRIDGES	SANTA MONICA HIGH SCHOOL	313.72	R
815260	SIR SPEEDY PRINTING #0245	CLASSIFICATION STUDY	PERSONNEL COMMISSION	71.33	U
812506	SMART & FINAL	OPEN ORDER	LINCOLN MIDDLE SCHOOL	200.00	R
815092	SMART & FINAL	OPEN ORDER/SUP/VALUED YOUTH	JOHN ADAMS MIDDLE SCHOOL	300.00	R
815242	SMART & FINAL	SUPPLIES	COMMUNITY DAY SCHOOL	324.75	R
815354	SMART & FINAL #315	GEN SUPPLIES FOR INSERVICE	STATE AND FEDERAL PROJECTS	162.38	R
815360	SMART & FINAL #315	SUPPLIES	MCKINLEY ELEMENTARY SCHOOL	500.00	R

PURCHASE ORDERS TO BE APPROVED AT THE BOARD MEETING OF MARCH 13, 2008

U-GENERAL FUND,UNRESTRICTED R-GENERAL FUND,RESTRICTED A ADULT ED CD-CHILD DEVELOPMENT F-CAFETERIA
 SF-SPECIAL FINANCING (FLEX) EX-PROP ES and X D-DEVELOPER FEES SR-SPECIAL RESERVE CAPITAL
 DF-DEFERRED MAINTENANCE SM-STATE MODERNIZATION

PO NO.	VENDOR	DESCRIPTION	LOCATION	AMOUNT	
815108	SOCIAL STUDIES SCHOOL SVCS	SOCIAL STUDIES SUPPLIES	SANTA MONICA HIGH SCHOOL	600.00	R
815252	SPARKLETTS WATER CO	SPARKLETTS WATER	STUDENT SERVICES	100.00	U
815096	STAPLES BUSINESS ADVANTAGE	USB Flash Drives	SPECIAL EDUCATION REGULAR YEAR	319.29	R
815253	STAPLES BUSINESS ADVANTAGE	CLASSROOM SUPPLIES	SANTA MONICA HIGH SCHOOL	92.51	R
815129	STAPLES/P-U/VENICE/LINCOLN BL	CLASSROOM GENERAL SUPPLIES	OLYMPIC CONTINUATION SCHOOL	700.00	R
815312	STAPLES/P-U/VENICE/LINCOLN BL	OPEN P.O.	OLYMPIC CONTINUATION SCHOOL	200.00	R
815384	STAPLES/P-U/VENICE/LINCOLN BL	OPEN ORDER/OFFICE SUPPLIES	CHILD DEVELOPMENT CENTER	110.00	CD
815388	STAPLES/P-U/VENICE/LINCOLN BL	OPEN ORDER/OFFICE SUPPLIES	CHILD DEVELOPMENT CENTER	75.00	CD
815389	STAPLES/P-U/VENICE/LINCOLN BL	OPEN ORDER/OFFICE SUPPLIES	CHILD DEVELOPMENT CENTER	75.00	CD
815402	STAPLES/P-U/VENICE/LINCOLN BL	CLASS SUPPLIES	SMASH SCHOOL	980.00	R
815405	STAPLES/P-U/WLA/CUST#240174490	OPEN ORDER/INST SUP/EXPL/GIFT	JOHN ADAMS MIDDLE SCHOOL	207.03	R
815214	STAR EDUCATIONAL SYSTEMS	AV EQUIPMENT	SANTA MONICA HIGH SCHOOL	619.29	R
815111	TARGET STORES	INSTRUCTIONAL SUPPLIES	OLYMPIC CONTINUATION SCHOOL	500.00	R
815167	TAYLOR ENGINEERING INC.	SEWER LEAK DETECT-ADULT ED	FACILITY MAINTENANCE	375.00	R
815300	TAYLOR ENGINEERING INC.	OPEN ORDER-LEAK DETECT MAINT	FACILITY MAINTENANCE	750.00	R
815410	TEACHER'S DISCOVERY	INST SUP/SPANISH/EXPL	JOHN ADAMS MIDDLE SCHOOL	141.14	R
812507	TOLENTINO,AIMEE	REIMBURSEMENT: INCENTIVES	LINCOLN MIDDLE SCHOOL	800.00	R
815130	TOYS R US	GENERAL SUPPLIES/GUITAR	OLYMPIC CONTINUATION SCHOOL	800.00	R
815142	TRI-BEST VISUAL DISPLAY	BULLETIN BOARD	LINCOLN MIDDLE SCHOOL	166.98	R
815172	TRI-BEST VISUAL DISPLAY	MARKERBOARD/DANCE/ARTS GRANT	JOHN ADAMS MIDDLE SCHOOL	285.89	R
815082	TUMBLEWEED EDUCATIONAL	Special Ed. Bus Rt. #24	TRANSPORTATION	3,229.05	R
815190	U.S. POSTAL SERVICE	MAIL MACHINE POSTAGE	PURCHASING/WAREHOUSE	10,000.00	U
815304	UNITED LABORATORIES	CUSTODIAL SUPPLIES	FACILITY OPERATIONS	594.22	U
814922	VAN COTT,JAMES	Mileage Reimbursement	SPECIAL EDUCATION REGULAR YEAR	400.00	R
815308	VONS MARKET-SANTA MONICA	OPEN ORDER/COOKING PROJECTS	CHILD DEVELOPMENT CENTER	100.00	CD
815386	VONS MARKET-SANTA MONICA	OPEN ORDER/COOKING PROJECTS	CHILD DEVELOPMENT CENTER	100.00	CD
815241	VONS STORE #2262	SUPPLIES	COMMUNITY DAY SCHOOL	324.75	R
815349	VONS STORE #2262	IN-SERVICE SUPPLIES	STATE AND FEDERAL PROJECTS	200.00	R
815364	VONS STORE #2262	GROCERIES	SANTA MONICA HIGH SCHOOL	900.00	R
815164	W. W. GRAINGER	ELECTRICAL SUPPLIES	FACILITY MAINTENANCE	2,500.00	R
815165	W. W. GRAINGER	OPEN ORDER-ELECTRICAL/HVAC	FACILITY MAINTENANCE	2,000.00	R
815305	W. W. GRAINGER	OPEN ORDER CUSTODIAL SUPPLIES	FACILITY OPERATIONS	138.10	U
815339	W.O.L.F.		CABRILLO ELEMENTARY SCHOOL	2,950.00	R
815069	WARDS NATURAL SCIENCE	SCIENCE CLASS SUPPLIES	SANTA MONICA HIGH SCHOOL	233.49	R
815324	WEST LA MUSIC INCORP	MICROPHONE	LINCOLN MIDDLE SCHOOL	253.56	R
813632	WM H SADLIER INC	VOCABULARY BOOKS	MALIBU HIGH SCHOOL	656.73	R
815367	WOLVERINE SPORTS	PE SUPPLIES	OLYMPIC CONTINUATION SCHOOL	105.42	R
815379	WRIGHT GROUP/MCGRAW-HILL	INST SUP/EQUITY	JOHN ADAMS MIDDLE SCHOOL	2,582.58	R
815061	WRIGHT,SAMANTHA ALLEN	REIMBURSEMENT TESTING FEES	STATE AND FEDERAL PROJECTS	294.00	R
815205	YOUNG,DR. WILBERT	RATERS'SUPPLY	PERSONNEL COMMISION	367.53	U
815288	ZAVALA, ANNA	Mileage Reimbursement	SPECIAL EDUCATION REGULAR YEAR	800.00	R

** NEW PURCHASE ORDERS TOTAL: 275,670.86

TO: BOARD OF EDUCATION

ACTION/CONSENT

03/13/08

FROM: DIANNE TALARICO / TIMOTHY R. WALKER / JUDY ABDO

RE: AGREEMENT WITH THE STATE DEPARTMENT OF EDUCATION TO
ACCEPT FUNDS FOR THE CHILD DEVELOPMENT PROGRAM FOR
FISCAL YEAR 2007-08 THROUGH 2009-10

RECOMMENDATION NO. A.07

It is recommended that the Board of Education accept the contract with the State Department of Education, Child Development Division effective December 15, 2007, through June 30, 2010. This agreement CRPM-7027 is to be executed between the Superintendent of Public Instruction, State Department of Education, and the Santa Monica-Malibu Unified School District, wherein the State agrees to pay the Santa Monica-Malibu Unified School District Child Development Fund/CDC an amount not to exceed \$39,501.00.

Funding Information:

Source: Child Development Fund - Restricted

Currently Budgeted: No

Account Number: 12-50350-0-00000-00000-8290-000-0000

Description: Child Development Center Apportionment - CDC

COMMENT: This one-time-only Facilities Renovation and Repair fund from the 2007-2008 Budget Act will provide assistance in maintaining healthy, safe, and accessible environments for children in California Department of Education subsidized child care and development programs.

MOTION MADE BY:

SECONDED BY:

STUDENT ADVISORY VOTE:

AYES:

NOES:

TO: BOARD OF EDUCATION

ACTION/CONSENT

03/13/08

FROM: DIANNE TALARICO / JANECE L. MAEZ / VIRGINIA I. HYATT

RE: ACCEPTANCE OF WORK COMPLETED - EXTERIOR PAINTING
PROJECT - BID #7.03 (PHASE II) - JOHN ADAMS MIDDLE
SCHOOL - ALPHA DÉCOR & PAINTING, INC.

RECOMMENDATION NO. A.08

It is recommended that the Board of Education accept as completed all work contracted with Alpha Décor & Painting, Inc. for exterior painting project, Bid #7.03 (Phase II), for John Adams Middle School

Funding Information

Budgeted: Yes

Fund/Source: 14 - Deferred Maintenance

Account Number:14-62050-0-00000-85000-6100-060-1500

Description: Site Improvement

COMMENT: The contract with Alpha Décor & Painting, Inc. has been completed. In order to facilitate the release of the retention being held by the district, a Notice of Completion must be filed for thirty-five (35) days with the County of Los Angeles pending board approval.

ORIGINAL CONTRACT: \$208,000

FINAL CONTRACT AMOUNT: \$208,000

MOTION MADE BY:

SECONDED BY:

STUDENT ADVISORY VOTE:

AYES:

NOES:

TO: BOARD OF EDUCATION

ACTION/CONSENT

03/13/08

FROM: DIANNE TALARICO / JANECE L. MAEZ / VIRGINIA I. HYATT

RE: AWARD OF BID #8.10 - FENCING REPLACEMENT DISTRICTWIDE
TO TBD

RECOMMENDATION NO. A.09

It is recommended that the Board of Education award Bid #8.10, Fencing Replacement Districtwide to TBD, in an amount not to exceed TBD.

Funding Information

Budgeted:

Fund:

Source:

Account Number:

COMMENTS: Bids were sent to four (4) contractors, five (5) contractors attended the job walk on January 31, 2008, and two (2) submitted bids as follows:

Note: At the time the agenda went to print, the bids were being analyzed. There will be an update to the agenda with the vendor and cost information prior to the meeting.

MOTION MADE BY:

SECONDED BY:

STUDENT ADVISORY VOTE:

AYES:

NOES:

TO: BOARD OF EDUCATION

ACTION/CONSENT

03/13/08

FROM: DIANNE TALARICO / JANECE L. MAEZ / VIRGINIA I. HYATT

RE: INTERIM ARCHITECTURAL CONTRACTS FOR MEASURE "BB"
FACILITIES DESIGN - DATE EXTENSION ONLY

RECOMMENDATION NO. A.10

It is recommended that the Board of Education award a time extension on interim contract agreements to R.L. Binder, Osborn/Konig-Eizenberg, HMC Architects, WWCOT, and Daly Genik/IBI to provide architectural design services in conjunction with the Measure "BB" construction program, to allow staff to complete negotiations with these firms and execute contracts.

Funding Information

Budgeted: Yes

Fund: 21

Source: Building Fund

Account Number: 21-00000-0-00000-82000-5802-050-1500

Description: Consultant Services

COMMENTS: Due to the complexity of architectural services contracts, district staff requires additional time to finalize contract terms for architectural services. In order for the projects to proceed on schedule, a time extension and contract amount increase are required to extend the interim contracts through the end of March 2008. On 12/13/07, the Board of Education approved the interim contracts through the end of January 2008, and on 1/17/08 approved an extension through the end of February.

The current and proposed amounts of the interim contracts are as follows:

Architect	Current Interim Agreement	March	Total
R.L. Binder	Nov-Feb \$520,000	Included	\$520,000
HMC Architects	Dec-Feb \$270,000	\$135,000	\$405,000
Daly/Genik/IBI	Dec-Feb \$150,000	\$76,000	\$226,000
Osborn/Konig Eizenberg	Dec-Feb \$150,000	\$55,000	\$205,000
WWCOT	Dec-Feb \$250,000	\$145,000	\$395,000

MOTION MADE BY:

SECONDED BY:

STUDENT ADVISORY VOTE:

AYES:

NOES:

TO: BOARD OF EDUCATION

ACTION/CONSENT

03/13/08

FROM: DIANNE TALARICO / JANECE L. MAEZ / VIRGINIA I. HYATT

RE: APPROVAL OF PRE-QUALIFIED LIST OF GEOTECHNICAL FIRMS
FOR MEASURE "BB" PROJECTS - RFQ #8.14

RECOMMENDATION NO. A.11

It is recommended that the Board of Education approve the following three (3) firms: Converse, Leighton, and MACTEC, to provide geotechnical services for the Measure "BB" projects.

Funding Information

Budgeted: Yes

Fund: 21

Source: State School Building Fund

Account Number: 21-00000-0-00000-82000-5890-050-1500

Description: Other Operating Expenses

COMMENTS: These geotechnical firms will be assigned projects for various district sites in both Santa Monica and Malibu. The firms will be assigned projects as the need arises and depending on their familiarity and availability for the assignment. Specific cost proposals for those assignments will be brought to the Board of Education prior to issuing contracts with the firms.

Current geotechnical investigations are necessary for each site to determine structural design requirements, given the site soils profile and current codes.

Invitations to submit Qualifications were sent to four (4) geotechnical firms; three (3) firms submitted:

- Converse Consulting
- Leighton Geotechnical
- MACTEC

The firms responded to the RFQ with a Statement Of Qualifications, and attached their firm's rate schedule. Those rates are available for review in the Purchasing Office.

This scope of work was anticipated in the cost projections for the Measure "BB" budget.

MOTION MADE BY:

SECONDED BY:

STUDENT ADVISORY VOTE:

AYES:

NOES:

TO: BOARD OF EDUCATION

ACTION/CONSENT

3/13/08

FROM: DIANNE TALARICO / JANECE L. MAEZ / VIRGINIA I. HYATT

RE: AWARD OF TITLE SEARCH RECORDS & REPORT FOR MEASURE "BB"
- RFP #8.16

RECOMMENDATION NO. A.12

It is recommended that the Board of Education award a contract to First America Title, for Title Search Records & Report Services districtwide, for the Measure "BB" program, in the amount of \$15,000.

Funding Information

Budgeted: Yes

Fund: 21

Source: State School Building Fund

Account Number: 21-00000-0-00000-82000-5890-050-1500

Description: Other Operating Expenses

COMMENTS: This contract is for the award of Title Search Records & Report services for all district sites in both Santa Monica and Malibu. It is anticipated that this work will begin upon award and be complete in six (6) to eight (8) weeks, and be available to the surveyors for finalization of the site surveys.

Invitations to submit a proposal were sent to three (3) title companies, two (2) submitted proposals. The proposals are as follows:

- Stewart Title \$28,000
- First America Title \$15,000

Current title reports are required to determine exact boundaries, ascertain any liens, mortgages, easements, encumbrances, and covenants attached to the parcels owned by the district.

This scope of work was anticipated in the cost projections for the Measure "BB" budgets.

MOTION MADE BY:

SECONDED BY:

STUDENT ADVISORY VOTE:

AYES:

NOES:

TO: BOARD OF EDUCATION

ACTION/CONSENT

03/13/08

FROM: DIANNE TALARICO / JANECE L. MAEZ / PAT HO

RE: ACCEPTANCE OF GIFTS - 2007/2008

RECOMMENDATION NO. A.13

It is recommended that the Board of Education accept, with gratitude, checks and gifts totaling \$30,450.97 presented to the Santa Monica-Malibu Unified School District.

It is further recommended that the Fiscal/Business Services Office, in accordance with Educational Code §42602, be authorized to increase the 2007-2008 income and appropriations by \$29,850.97 as described on the attached listing.

COMMENT: The value of all non-cash gifts has been determined by the donors.

NOTE: The list of gifts is available on the District's website, www.smmusd.org.

MOTION MADE BY:

SECONDED BY:

STUDENT ADVISORY VOTE:

AYES:

NOES:

School/Site Account Number	Gift Amount	Equity Fund 15% Contrib.	In-kind Value	Donor	Purpose
JAMS 01-90120-0-00000-00000-8699-011-0000	\$ 850.00 \$ 425.00 \$ 291.73 \$ 56.52	\$ 150.00 \$ 75.00 \$ 51.48 \$ 9.98	\$ 600.00	JNM Living Trust Metro Calvary Church Kimberly Eyer Coca-Cola Bottling Company JAMS PTSA	General Supplies and Materials General Supplies and Materials General Supplies and Materials General Supplies and Materials 10 Multi-media projectors
Adult Education 11-90120-0-00000-00000-8699-090-0000					
Alternative (SMASH) 01-90120-0-00000-00000-8699-009-0000					
Cabrillo 01-90120-0-00000-00000-8699-017-0000	\$ 357.00	\$ 63.00		Malibu Knowledge Group	General Supplies and Materials
CDS 12-90120-0-00000-00000-8699-070-0000					
Edison 01-90120-0-00000-00000-8699-001-0000					
Franklin 01-90120-0-00000-00000-8699-002-0000					
Grant 01-90120-0-00000-00000-8699-003-0000					
Lincoln 01-90120-0-00000-00000-8699-012-0000	\$ 170.00	\$ 30.00		Westside Academy of Dance	General Supplies and Materials
Malibu High School 01-90120-0-00000-00000-8699-010-0000	\$ 5,000.00 \$ 70.00	\$ - \$ -		Malibu High Athletic Booster Club Kay Corrodi	Coach Assistant, Hourly Restitution Payments
McKinley 01-90120-0-00000-00000-8699-004-0000					
Muir 01-90120-0-00000-00000-8699-005-0000	\$ 986.00 \$ 762.00 \$ 425.00 \$ 45.00	\$ 174.00 \$ - \$ 75.00 \$ -		Anonymous Various Parents The Zarchen Family Anonymous	General Supplies and Materials Field Trip General Supplies and Materials Field Trip
Olympic HS 01-90120-0-00000-00000-8699-014-0000	\$ 160.00	\$ -		John Muir PTA	Scholarship for Amanda Brown
Rogers 01-90120-0-00000-00000-8699-006-0000	\$ 1,000.00	\$ -		Scholarship America Target	Field Trips

School/Site Account Number	Gift Amount	Equity Fund 15% Contrib.	In-kind Value	Donor	Purpose
Roosevelt 01-90120-0-00000-00000-8699-007-0000					
Samohi 01-90120-0-00000-00000-8699-015-0000	\$ 507.00 \$ 424.00 \$ 234.00	\$ - \$ - \$ -		Various Various Various	Transcripts Transcripts Transcripts
Barnum Hall 01-91150-0-00000-00000-8699-015-0000					
Pt. Dume Marine Science 01-90120-0-00000-00000-8699-019-0000	\$ 17,400.00	\$ -		Various Parents	Field Trip
Webster 01-90120-0-00000-00000-8699-008-0000					
Others:					
Superintendent's Office 01-90120-0-00000-00000-8699-020-0000					
Educational Services 01-90120-0-00000-00000-8699-030-0000					
Student & Family Services 01-90120-0-00000-00000-8699-040-0000					
Special Education 01-90120-0-00000-00000-8699-044-0000					
Information Services 01-90120-0-00000-00000-8699-054-0000					
Food and Nutrition Services 01-90120-0-00000-00000-8699-057-0000					
District 01-90120-0-00000-00000-8699-090-0000					
TOTAL	\$ 29,163.25	\$ 628.46	\$ 600.00		

School/Site Account Number	Y-T-D Adjusted Gift Total	Current Gift Amount	Equity Fund 15% Contrib.	Cumulative Gift Amount	Y-T-D In-Kind Value	Current In-Kind Value	Cumulative In-Kind Value
JAMS 01-90120-0-00000-00000-8699-011-0000	\$ 191,361.56	\$ 1,623.25	\$ 286.46	\$ 193,271.27	\$ 4,750.00 \$ 100.00	\$ 600.00	\$ 5,350.00 \$ 100.00
Adult Education 11-90120-0-00000-00000-8699-090-0000	\$ 3,280.73			\$ 3,280.73			
Alternative (SMASH) 01-90120-0-00000-00000-8699-009-0000							
Cabrillo 01-90120-0-00000-00000-8699-017-0000	\$ 68,908.93	\$ 357.00	\$ 63.00	\$ 69,328.93	\$ 1,268.56		\$ 1,268.56
CDS 12-90120-0-00000-00000-8699-070-0000	\$ 1,384.67			\$ 1,384.67	\$ 2,748.00		\$ 2,748.00
Edison 01-90120-0-00000-00000-8699-001-0000	\$ 61,077.26		\$ -	\$ 61,077.26	\$ 200.00		\$ 200.00
Franklin 01-90120-0-00000-00000-8699-002-0000	\$ 1,105.32			\$ 1,105.32			
Grant 01-90120-0-00000-00000-8699-003-0000	\$ 3,529.46			\$ 3,529.46	\$ 65.88		\$ 65.88
Lincoln 01-90120-0-00000-00000-8699-012-0000 01-90120-0-00000-00000-8699-010-0000	\$ 41,831.91	\$ 170.00	\$ 30.00	\$ 42,031.91			
Malibu Shark Fund - Resource #90141							
McKinley 01-90120-0-00000-00000-8699-004-0000	\$ 61,329.92			\$ 61,329.92			
Muir 01-90120-0-00000-00000-8699-005-0000	\$ 45,348.35	\$ 2,218.00	\$ 249.00	\$ 47,815.35			
Olympic HS 01-90120-0-00000-00000-8699-014-0000	\$ 5,556.16	\$ 160.00	\$ -	\$ 5,716.16			
Rogers 01-90120-0-00000-00000-8699-006-0000	\$ 54,909.59	\$ 1,000.00	\$ -	\$ 55,909.59	\$ 150.00		\$ 150.00
Roosevelt 01-90120-0-00000-00000-8699-007-0000	\$ 134,574.03			\$ 134,574.03	\$ 100.00		\$ 100.00
Samohi 01-90120-0-00000-00000-8699-015-0000	\$ 132,471.61	\$ 1,165.00	\$ -	\$ 133,636.61	\$ 4,825.00 \$ 100.00		\$ 4,825.00 \$ 100.00
Pt. Dume Marine Science 01-90120-0-00000-00000-8699-019-0000	\$ 111,451.20	\$ 17,400.00	\$ -	\$ 128,851.20			
Webster 01-90120-0-00000-00000-8699-008-0000	\$ 12,670.00			\$ 12,670.00			

School/Site Account Number	Y-T-D Adjusted Gift Total	Current Gift Amount	Equity Fund 15% Contrib.	Cumulative Gift Amount	Y-T-D In-Kind Value	Current In-Kind Value	Cumulative In-Kind Value	
ALL OTHER LOCATIONS:								
Superintendent's Office 01-90120-0-00000-00000-8699-020-0000	\$ 50,000.00			\$ 50,000.00				
Educational Services 01-90120-0-00000-00000-8699-030-0000	\$ 169,027.50			\$ 169,027.50	\$ 17,820.00		\$ 17,820.00	
Student and Family Support Services 01-90120-0-00000-00000-8699-041-0000	\$ 325.00			\$ 325.00				
Special Education 01-90120-0-00000-00000-8699-044-0000	\$ 1,000.00			\$ 1,000.00				
Information Services 01-90120-0-00000-00000-8699-054-0000	\$ 2,000.00			\$ 2,000.00				
District 01-90120-00000-0-00000-8699-090-0000								
Food & Nutrition Services 01-90120-0-00000-00000-8699-070-0000	\$ 9,207.84			\$ 9,207.84				
TOTAL GIFTS	\$ 1,162,351.04	\$ 24,093.25	\$ 628.46	\$ 1,187,072.75	\$ 32,127.44	\$ 600.00	\$ 32,727.44	
<table border="1" style="margin-left: auto; margin-right: auto;"> <tr> <td>Total Equity Fund 15% Contribs.</td> </tr> </table>								Total Equity Fund 15% Contribs.
Total Equity Fund 15% Contribs.								
Total Cash Gifts for District:	\$ 24,093.25	\$ 628.46			Total In-Kind Gifts:	\$ 600.00		

TO: BOARD OF EDUCATION

ACTION/CONSENT

03/13/08

FROM: DIANNE TALARICO / MICHAEL D. MATTHEWS

RE: CERTIFICATED PERSONNEL - Elections, Separations

RECOMMENDATION NO. A.14

Unless otherwise noted, the following items are included in the 2007/2008 approved budget.

ADDITIONAL ASSIGNMENTS

ADAMS MIDDLE SCHOOL

Avedian, Ray	9.9 hrs @\$40.46	2/1/08-2/10/08	Est Hrly/\$400
Brown, Dan	9.9 hrs @\$40.46	2/1/08-2/10/08	Est Hrly/\$400
Cartagena, Lissette	9.9 hrs @\$40.46	2/1/08-2/10/08	Est Hrly/\$400
Hart, Matt	9.9 hrs @\$40.46	2/1/08-2/10/08	Est Hrly/\$400
Jurrewicz, Kristin	9.9 hrs @\$40.46	2/1/08-2/10/08	Est Hrly/\$400
Torres, Lupe	9.9 hrs @\$40.46	2/1/08-2/10/08	Est Hrly \$400
Yoffy, Julie	9.9 hrs @\$40.46	2/1/08-1/20/08	Est Hrly/\$400
TOTAL ESTABLISHED HOURLY			\$2,800

Comment: Chaperone, 8th Grade Science Magnet Trip
01-Targeted Instr. Imprvmt BG

EDISON ELEMENTARY SCHOOL

Ellis, John	7 hrs @\$40.46	2/21/08-3/14/08	Est Hrly/\$283
TOTAL ESTABLISHED HOURLY			\$283

Comment: Testing and Assessments
01-Special Education

EDUCATIONAL SERVICES

Mabrey, Matt	12 hrs @\$40.46	2/1/08-6/20/08	Est Hrly/\$486
TOTAL ESTABLISHED HOURLY			\$486

Comment: Lincoln MS CTCL Cohort
01-ELAP-ENGL Lang Acquisition Prog

Donovan, Mike	49.4 hrs @\$40.46	7/1/07-6/4/08	Est Hrly/\$2,000
Hamilton, LaDawna	49.4 hrs @\$40.46	7/1/07-6/4/08	Est Hrly/\$2,000
Naranjo, Rocio	49.4 hrs @\$40.46	7/1/07-6/4/08	Est Hrly/\$2,000
Sato, Glenn	49.4 hrs @\$40.46	7/1/07-6/4/08	Est Hrly/\$2,000
Talbot, Deborah	49.4 hrs @\$40.46	7/1/07-6/4/08	Est Hrly/\$2,000
Torres, Lupe	49.4 hrs @\$40.46	7/1/07-6/4/08	Est Hrly/\$2,000
TOTAL ESTABLISHED HOURLY			\$12,000

Comment: EETT Coaches
01-Title II Part D EETT Cometitiv

Bronstein, Susan	5 hrs @\$40.46	3/6/08	Est Hrly/\$202
Housmann, Joann	6 hrs @\$40.46	3/6/08	Est Hrly/\$243
Niemi, Charlene	5 hrs @\$40.46	3/7/08	Est Hrly/\$202
TOTAL ESTABLISHED HOURLY			\$647

Comment: Nurse coverage for Stairway of the Stars
01-Gifts

LINCOLN MIDDLE SCHOOL

Marcos, Eric	16 hrs @\$40.46	2/11/08-6/22/08	Est Hrly/\$647
TOTAL ESTABLISHED HOURLY			\$647

Comment: Math Training Program
01-School and Library Imprvmt BG

Stout, Lewis	12 hrs @\$40.46	2/11/08-6/20/08	Est Hrly/\$486
TOTAL ESTABLISHED HOURLY			\$486

Comment: Sound and Lighting for Auditorium Permits
01-Permits

Stauffer, Nathaniel	20 hrs @\$47.63	2/25/08-4/4/08	<u>Own Hrly/\$953</u>
		TOTAL OWN HOURLY	\$953

Comment: 6th Period Assignment
01-Unrestricted Resource

ROGERS ELEMENTARY SCHOOL

Braff, Sarah	2.5 hrs @\$40.46	2/11/08-3/14/08	Est Hrly/\$ 101
Contreras, Sitara	45.0 hrs @\$40.46	1/15/08-5/2/08	Est Hrly/\$1,821
Cruz, Teresa	45.0 hrs @\$40.46	1/15/08-5/2/08	Est Hrly/\$1,821
Daruty, Lila	30.0 hrs @\$40.46	1/15/08-5/2/08	Est Hrly/\$1,214
Ferrera, Emily	30.0 hrs @\$40.46	1/15/08-5/2/08	Est Hrly/\$1,214
Fliegel, Lois	7.5 hrs @\$40.46	2/11/08-3/14/08	Est Hrly/\$ 303
Klein, Joan	2.5 hrs @\$40.46	2/11/08-3/14/08	Est Hrly/\$ 101
Marmolejo, Yoli	2.5 hrs @\$40.46	2/11/08-3/14/08	Est Hrly/\$ 101
Schneider, Kirsten	45.0 hrs @\$40.46	1/15/08-5/2/08	Est Hrly/\$1,821
Smith, Lovell	15.0 hrs @\$40.46	1/15/08-5/2/08	Est Hrly/\$ 607
Zundell, Nick	2.5 hrs @\$40.46	2/11/08-3/14/08	<u>Est Hrly/\$ 101</u>
		TOTAL ESTABLISHED HOURLY	\$9,205

Comment: Reading 180
01-Unrestricted Resource

ROOSEVELT ELEMENTARY SCHOOL

Alexander, Lorie	45 hrs @\$40.46	2/28/08-4/18/08	Est Hrly/\$1,821
Fernandez, Heidi	45 hrs @\$40.46	2/28/08-4/18/08	Est Hrly/\$1,821
Ross, Shannon	45 hrs @\$40.46	2/28/08-4/18/08	<u>Est Hrly/\$1,821</u>
		TOTAL ESTABLISHED HOURLY	\$5,463

Comment: After-School Math Intervention
01-Gifts - Equity Fund

SANTA MONICA HIGH SCHOOL

Bates, Kelly	6 hrs @\$40.46	8/27/07-8/28/07	Est Hrly/\$243
Bautista, Kelly	6 hrs @\$40.46	8/27/07-8/28/07	Est Hrly/\$243
Chapman, James	6 hrs @\$40.46	8/27/07-8/28/07	Est Hrly/\$243
Colmerero, Maria	6 hrs @\$40.46	8/27/07-8/28/07	Est Hrly/\$243
Forrer, Brooke	6 hrs @\$40.46	8/27/07-8/28/07	Est Hrly/\$243
Gollan, Andrew	6 hrs @\$40.46	8/27/07-8/28/07	Est Hrly/\$243
Henderson, Luke	6 hrs @\$40.46	8/27/07-8/28/07	Est Hrly/\$243
Lopez, Jose	6 hrs @\$40.46	8/27/07-8/28/07	Est Hrly/\$243
Paul, Carment	6 hrs @\$40.46	8/27/07-8/28/07	Est Hrly/\$243
Toumayan, Guadalupe	6 hrs @\$40.46	8/27/07-8/28/07	<u>Est Hrly/\$243</u>
		TOTAL ESTABLISHED HOURLY	\$2,430

Comment: Common Assessments
01-Unrestricted Resource

WEBSTER ELEMENTARY SCHOOL

Tafi, Mary Louise	60 hrs @\$40.46	2/4/08-6/30/08	<u>Est Hrly/\$2,428</u>
		TOTAL ESTABLISHED HOURLY	\$2,428

Comment: Nutrition enrichment classes for K-3 students
01-School and Library Imprvmnt BG

TOTAL ESTABLISHED HOURLY, AND OWN HOURLY = \$37,828

ELECTIONS**PROBATIONARY CONTRACTS**

<u>Name/Assignment/Location</u>	<u>Not to Exceed</u>	<u>Effective</u>
Kim, Mindy/Special Ed Pine Street	100% [repl. L.Crane/Prob 0]	2/19/08

SUBSTITUTE TEACHERSEffective**LONG-TERM SUBSTITUTES**(@\$210.00 Daily Rate)

Bergsten, Nancy	1/30/08
Harkey, Anise	2/4/08
Hatcher, Jenne	2/4/08

PREFERRED SUBSTITUTES(@\$162.00 Daily Rate)

Cooper, Richard	1/30/08
Gutierrez, Yessenia	1/24/08
Soriano, Joann	2/15/08
Zaccagnino, Anthony	2/14/08

REGULAR DAY-TO-DAY SUBSTITUTES(@\$138.00 Daily Rate)

Dean, Brittany	2/8/08
Hatcher, Jenne	2/4/08

CHANGE IN ASSIGNMENTEffective

Porter, Lynne Adult Education/Teacher	1/14/08-6/20/08
<u>From:</u> 20 hrs/week	
<u>To:</u> 16 hrs/week	

LEAVE OF ABSENCE (with pay)Name/LocationEffective

Komlos, Tristan Lincoln Middle School	2/27/08-5/15/08
Mccommas, Shanti Rogers Elementary	1/28/08-4/16/08 [maternity]
Rosenblum, Laura Cabrillo Elementary	1/28/08-2/15/08 [medical]
Waldorf, Sherry Pupil Services	1/16/08-2/8/08 [medical]

RESIGNATIONName/LocationEffective

Bautista-Nicholas, Claudia Santa Monica High School	6/20/08
Ferguson, Carrie SMASH	6/30/08
Perkins, Thea-Marie Santa Monica High School	6/20/08

RETIREMENT

<u>Name/Location</u>	<u>Effective</u>
Bennett, Leslie Malibu High School	6/20/08
Cady, William Patrick Santa Monica High School	6/20/08

MOTION MADE BY:
SECONDED BY:
STUDENT ADVISORY VOTE:
AYES:
NOES:

TO: BOARD OF EDUCATION

ACTION/CONSENT

03/13/08

FROM: DIANNE TALARICO / TIMOTHY R. WALKER / WILBERT YOUNG

RE: CLASSIFIED PERSONNEL - MERIT

RECOMMENDATION NO. A.15

It is recommended that the following appointments for Classified Personnel (merit system) be approved and/or ratified. All personnel will be properly elected in accordance with District policies and salary schedules.

<u>ELECTION</u>		<u>EFFECTIVE DATE</u>
COLLINS, JACLYN CHILD DEVELOP SVCS	CHILDREN CENTER ASST 6 HRS/SY/RANGE: 18 STEP: A	2/19/08
GAIDZIK, GEORGE INFORMATION SVCS	TECHNOLOGY SUPPORT ASST 8 HRS/11 MO/RANGE: 32 STEP: F	2/26/08
GARCIA, SARA CHILD DEVELOP SVCS	CHILDREN CENTER ASST 3.5 HRS/SY/RANGE: 18 STEP: A	3/3/08
GRANIERI, BROOKE GRANT ELEMENTARY	INST ASST - SPECIAL ED 6 HRS/SY/RANGE: 20 STEP: A	2/7/08
LEMBO, VALERIE SANTA MONICA HS	INST ASST - SPECIAL ED 5 HRS/SY/RANGE: 20 STEP: A	2/20/08
LICASSI, JULIANA LINCOLN MIDDLE SCHOOL	INST ASST - SPECIAL ED 4.5 HRS/SY/RANGE: 20 STEP: A	2/27/08
REUTHER, THERESA SANTA MONICA HS	INST ASST - SPECIAL ED 6 HRS/SY/RANGE: 20 STEP: A	2/22/08
WELCH, KALEENA MALIBU HIGH SCHOOL	LABORATORY TECH 6 HRS/SY/RANGE: 26 STEP: A	2/25/08
<u>RE-EMPLOYMENT</u>		<u>EFFECTIVE DATE</u>
SANTIAGO, LAUREN MCKINLEY ELEMENTARY	INST ASST - SPECIAL ED 6 HRS/SY/RANGE: 20 STEP: C	2/19/08
SHIH, JENNIFER CHILD DEVELOP SVCS	CHILDREN CENTER ASST 3.5 HRS/SY/RANGE: 18 STEP: F	2/25/08
<u>TEMP/ADDITIONAL ASSIGNMENTS</u>		<u>EFFECTIVE DATE</u>
BOSTON, KIM CHILD DEVELOP SVCS	INST ASST - SPECIAL ED	1/29/08-6/30/08
BUENDIA, CAROLINA MCKINLEY ELEMENTARY	INST ASST - SPECIAL ED	2/20/08
CHENG, INGRID PERSONNEL COMMISSION	OFFICE SPECIALIST	2/21/08
GERGHIS, SOHAIR MCKINLEY ELEMENTARY	INST ASST - SPECIAL ED	2/20/08

GERSHUNI, PEARL MCKINLEY ELEMENTARY	INST ASST - SPECIAL ED	2/20/08
INIGUEZ, WILMA MUIR ELEMENTARY	SR OFFICE SPECIALIST	2/10/08-6/30/08
LOPEZ, MARIBEL LINCOLN MIDDLE SCHOOL	INST ASST - SPECIAL ED	2/20/08-3/14/08
MARTINEZ, LUZ FOOD SERVICES/JAMS	SITE COORDINATOR	1/1/08-6/30/08
PEREZ, LUPE EDUCATIONAL SVCS	TRANSLATOR	1/14/08-6/14/08
PIERCE, MATTHEW MCKINLEY ELEMENTARY	INST ASST - SPECIAL ED	2/20/08
SANTIAGO, LAUREN MCKINLEY ELEMENTARY	INST ASST - SPECIAL ED	2/20/08
SATO, NAOMI EDUCATIONAL SVCS	INST ASST - MUSIC	1/24/08-3/7/08
TANAMAS, AYDA MCKINLEY ELEMENTARY	INST ASST - SPECIAL ED	2/20/08
WOLFE, PETRA LINCOLN MIDDLE SCHOOL	LIBRARY ASSISTANT	2/5/08-6/22/08

SUBSTITUTES

		<u>EFFECTIVE DATE</u>
BONNEY, CHRISTINA SPECIAL EDUCATION	INST ASST - SPECIAL ED	1/8/08-6/20/08
CAWLEY, PATRICIA PERSONNEL COMMISSION	OFFICE SPECIALIST	2/8/08-6/30/08
MOORE, VICTORIA SPECIAL EDUCATION	INST ASST - SPECIAL ED	1/18/08-6/20/08
TURNER-NEELY, CYNTHIA FOOD SERVICES	CAFETERIA WORKER I	2/23/08-6/20/08
YEH, WENDY CHILD DEVELOP SVCS	CHILDREN CENTER ASST	1/7/08-6/20/08

VOLUNTARY TRANSFER

		<u>EFFECTIVE DATE</u>
WATTS, ANNE LUZ JOHN ADAMS MS	INST ASST - SPECIAL ED 6 HRS/SY FR: 6 HRS/SY/SANTA MONICA HS	2/18/08

INCREASE IN ASSIGNMENT

		<u>EFFECTIVE DATE</u>
TURSI, LISA ROOSEVELT ELEM	SR OFFICE SPECIALIST 8 HRS/10 MO FR: 4 HRS/10 MO	2/1/08

<u>LEAVE OF ABSENCE (PAID)</u>		<u>EFFECTIVE DATE</u>
HEINLY, LARRY MAINTENANCE	ELECTRICIAN MEDICAL	1/7/08-4/21/08
KRATZ, DAMON MAINTENANCE	CUSTODIAN I MEDICAL	1/16/08-1/29/08
LOPEZ, ALBINA FOOD SERVICES	CAFETERIA WORKER I MEDICAL	1/18/08-3/5/08
MCCOY, DONNA JOHN ADAMS MS	COMMUNITY LIAISON FMLA	2/25/08-3/3/08
RAMIREZ, MARIA GUADALUPE FOOD SERVICES	CAFETERIA WORKER I MEDICAL	2/11/08-3/12/08
RUIZ, MARIA FOOD SERVICES	CAFETERIA WORKER I MEDICAL	1/14/08-6/20/08
SMITHFIELD, DAWN BUSINESS SERVICES	SR ADMINISTRATIVE ASST MEDICAL	1/14/08-3/14/08
TIMSON, JANET WEBSTER ELEMENTARY	INST ASST - CLASSROOM	1/26/08-2/13/08
WALKER, CHRISTINE CABRILLO ELEMENTARY	INST ASST - SPECIAL ED	1/15/08-1/28/08
<u>LEAVE OF ABSENCE (UNPAID)</u>		<u>EFFECTIVE DATE</u>
CURLAND, NAOMI SPECIAL EDUCATION	INST ASST - INTENS BEHAV INTERV PERSONAL - PARTIAL LEAVE - 35%	2/4/08-6/20/08
MCCOY, DONNA JOHN ADAMS MS	COMMUNITY LIAISON FMLA	3/4/08-3/14/08
SHERMAN, J. WYNN LINCOLN MS	INST ASST - SPECIAL ED PERSONAL	2/4/08-5/5/08
<u>PROFESSIONAL GROWTH</u>		<u>EFFECTIVE DATE</u>
DOMINGUEZ-MORALES, YANET INFORMATION SERVICES	TECHNOLGY SUPPORT ASST	2/1/08
LUNA, SYLVIA ROOSEVELT ELEMENTARY	INST ASST - SPECIAL ED	2/1/08
MONTE, PERI WEBSTER ELEMENTARY	ELEMENTARY LIBRARY COORD	2/1/08
<u>WORKING OUT OF CLASS</u>		<u>EFFECTIVE DATE</u>
COOPER, CAROL SPECIAL EDUCATION	INST ASST - INTEN BEHAV INTERV FR: INST ASST - SPECIAL ED	3/7/08-6/20/08
GLOVER, TOMITA SANTA MONICA HS	ADMINISTRATIVE ASST FR: SR OFFICE SPECIALIST	2/8/08-3/31/08
MARTIN, ELENA SANTA MONICA HS	ADMINISTRATIVE ASST FR: SR OFFICE SPECIALIST	2/8/08-3/31/08

PEREZ, SALOMEN SPECIAL EDUCATION	INST ASST - INTEN BEHAV INTERV FR: INST ASST - SPECIAL ED	2/7/08-6/20/08
TERRY, SYLVIA SANTA MONICA HS	ADMINISTRATIVE ASST FR: SR OFFICE SPECIALIST	2/8/08-3/31/08
WASHINGTON, CHANEE SANTA MONICA HS	ADMINISTRATIVE ASST FR: SR OFFICE SPECIALIST	2/8/08-3/31/08

ABOLISHMENT OF POSITION

OFFICE SPECIALIST 4.5 HRS/SY; ROOSEVELT ELEMENTARY	<u>EFFECTIVE DATE</u> 2/1/08
---	--

SUSPENSION WITHOUT PAY

5564-050-08 ADMINISTRATIVE ASST	<u>EFFECTIVE DATE</u> 3/3/08-3/4/08
---------------------------------	---

TERMINATION DUE TO EXHAUSTION OF ALL PAID LEAVES

(39-MONTH MEDICAL REEMPLOYMENT LIST)		
4656-007-08 ROOSEVELT ELEMENTARY	SENIOR OFFICE SPECIALIST	3/14/08
4866-011-08 JOHN ADAMS MIDDLE SCHOOL	INST ASST - SPECIAL ED	3/14/08
4292-557-08 FOOD SERVICES	CAFETERIA WORKER I	3/14/08

RESIGNATION

BERNARD, GREGORY SANTA MONICA HS	INST ASST - SPECIAL ED	<u>EFFECTIVE DATE</u> 6/20/08
GUTIERREZ, SILVIA CHILD DEVELOP SVCS	CHILDREN CENTER ASST	1/31/08
HOFER, CHRISTIAN WEBSTER ELEMENTARY	INST ASST - CLASSROOM	2/19/08
LIPOW, EILEEN FRANKLIN ELEMENTARY	INST ASST - SPECIAL ED	2/15/08
MONOSTORI, ANDREW INFORMATION SERVICES	DIRECTOR, INFORMATION SERVICES	3/31/08

MOTION MADE BY:
 SECONDED BY:
 STUDENT ADVISORY VOTE:
 AYES:
 NOES:

TO: BOARD OF EDUCATION

ACTION/CONSENT

03/13/08

FROM: DIANNE TALARICO / TIMOTHY R. WALKER / WILBERT YOUNG

RE: CLASSIFIED PERSONNEL - NON-MERIT

RECOMMENDATION NO. A.16

It is recommended that the following be approved and/or ratified for Classified Personnel (Non-Merit). All personnel assigned will be properly elected on a temporary basis to be used as needed in accordance with District policies and salary schedules.

COACHING ASSISTANT

AHANTAB, FARID	SANTA MONICA HS	1/2/08-6/20/08
LINDER, TIFFINI	SANTA MONICA HS	2/20/08-6/20/08
METCALF, DAN	MALIBU HIGH SCHOOL	10/12/07-6/30/08
NAUGHTON, CHRIS	SANTA MONICA HS	2/11/08-6/20/08
SHOOP, TAYLOR	MALIBU HIGH SCHOOL	2/26/08-6/30/08

MOTION MADE BY:

SECONDED BY:

STUDENT ADVISORY VOTE:

AYES:

NOES:

MAJOR ITEMS

TO: BOARD OF EDUCATION

ACTION/MAJOR

03/13/08

FROM: DIANNE TALARICO / MICHAEL D. MATTHEWS / WILBERT YOUNG

RE: APPOINTMENT OF PERSONNEL COMMISSIONER - SHANE MCLLOUD

RECOMMENDATION NO. A.17

It is recommended that the Board of Education approve the selection of Mr. Shane McCloud for nomination to the Personnel Commission as recommended by the Personnel Commission Selection Committee, and forward the nomination to the State Superintendent of Public Instruction for appointment. The term is to begin immediately upon appointment by the State Superintendent of Public Instruction and to extend to December 1, 2010.

COMMENT: The application period for the open Personnel Commissioner position was October 25, 2007, to January 28, 2008. The recruitment process was widely publicized by a variety of media, including on-line postings, press releases, and mailings. During this time period, one (1) application was received.

The Personnel Commission Selection Committee was comprised of Cheryl Byrne, PTA Representative; Rebel Harrison, SEIU Representative; and Kathy Wisnicki, Board of Education Representative. This Committee met on February 26, 2008, and interviewed the applicant, Mr. Shane McCloud. It is the recommendation of the Personnel Commission Selection Committee that Mr. McCloud be appointed to fill the open Personnel Commissioner position. Mr. McCloud served on the Board of Education for several years. He is an active member of the Santa Monica Community.

SEIU-Local 99 is preparing a letter to the State Superintendent of Public Instruction indicating their reluctance to support this nomination for appointment.

MOTION MADE BY:

SECONDED BY:

STUDENT ADVISORY VOTE:

AYES:

NOES:

TO: BOARD OF EDUCATION

ACTION/MAJOR

03/13/08

FROM: DIANNE TALARICO / JANECE L. MAEZ / PAT HO

RE: APPROVAL OF THE 2007-08 SECOND INTERIM REPORT

RECOMMENDATION NO. A.18

It is recommended that the Board of Education approve the 2007-08 Second Interim Report and the corresponding budget adjustments.

COMMENTS: Education Code (*EC*) Sections §35035 (g), §42130, and §42131 require the governing board of each local educational agency (*LEA*) to certify at least twice a year as to the *LEA*'s ability to meet its financial obligations for the remainder for that fiscal year and for the subsequent two fiscal years.

The Board of Education adopted the 2007-08 budget on June 28, 2007, and it was approved by the Los Angeles County Office of Education (*LACOE*). The Board adopted the 2007-08 1st Interim Report on December 13, 2007, and it was approved by the *LACOE*.

Since the adoption of the 1st Interim Report, changing conditions have necessitated adjusting the District budget. All of the expenditure and revenue changes previously approved by the Board or proposed for approval at this time are individually identified in the Second Interim Report (January 31, 2008), which is included as a part of this document.

The Second Interim Report was developed based on the following Revenue and Expenditure Assumptions.

REVENUE ASSUMPTIONS (2007-08) :

1. State Revenue Limit projection is based on a 4.53% COLA for 2007-08 (\$252 per ADA = 4.48% for SMMUSD).
2. The Base Revenue Limit for Santa Monica-Malibu will be \$5,879.84 per ADA (2006-07 P-2 ADA 11,360), and a .5% deficit factor is applied (approximately \$30 per ADA.)
3. The Lottery allocation is currently estimated to be \$143 per annual ADA. Of this amount, \$22 is allocated for instructional materials.
4. The District will participate in the State's Class Size Reduction Program for Grades K-3 and will receive \$1,071 per pupil for Grades K-3.

5. No budget for Mandated Costs Reimbursement in 2007-08.
6. Special Education transfer from the Revenue Limit is \$1,915,995. Special Education Settlement at \$4.52 per 1999-00 ADA is \$52,328. The Special Education estimated funding for AB 602 is \$6,423,014, and the estimated federal funding is \$2,501,847.
7. Instructional Materials Funding Realignment Program will be funded at \$69.32 per pupil (October 2006 CBEDS -11,902).
8. The local Parcel Tax for Measure "Y" at \$120.97 per parcel, will generate \$3,912,000.
9. The Measure "S" parcel tax at \$225 per parcel is estimated to generate \$6,573,000.
10. The District will receive \$7,227,100 of financial support from the City of Santa Monica. In the current agreement, the City's contribution will run for the next 10 years out from the 2004-05 fiscal year.
11. The combined lease revenue is \$2.64 million, which is from the Doubletree Hotel, Madison Site, 9th & Colorado and 16th Street properties.
12. There is \$1,117,000 estimated interest revenue for the Unrestricted General Fund.
13. The District will receive \$206,571 for the Art and Music Block Grant.
14. The District will receive \$421,868 for grade 7-12 Supplemental School Counseling.
15. The total of \$1,340,885 for the 2006-07 deferred revenues is added to 2007-08 current revenues for various programs.
16. Transfer \$1,000,000 from Fund 21 to Fund 01 to support the Ongoing Maintenance Program.

EXPENDITURE ASSUMPTIONS (2007-08):

1. Full-Time Equivalent (*FTE*) Changes post 1st Interim:
 - 1.0 FTE Technical Theater Coordinator
 - 1.0 FTE Administrative Assistant for Barnum Hall
 - 0.5 FTE Custodian for Barnum Hall
2. Salary:

District reach agreement with SMMCTA, a 3% salary increase is added in the 2nd Interim Budget. No projected salary

increase for Classified and Management is included in this budget.

3. Statutory Benefits:
 - 8.25% STRS employer contribution rate
 - 6.20% OASDI contribution rate
 - 1.45% Medicare contribution
 - 0.05% SUI contribution
 - 2.00% Workers' Compensation contribution rate decreased from 4% to 2%
 - 9.306% PERS employer Contribution rate
 - 3.984% PERS Reduction
4. Effective 1/1/2008, the premium rates for District-paid employee medical are increased as follows:
 - Blue Shield (HMO) - 10.07%
 - Kaiser Permanente - 9.17%
5. Due to our participation in the State's School Facilities Modernization Program, we are currently required to budget 3% of the total General Fund budget for the Ongoing Maintenance Program.
6. A contribution of \$523,561 to the Deferred Maintenance Fund (Fund 14) has been budgeted, representing the estimated District match.
7. A contribution of \$75,000 to the Child Development Fund (Fund 12) has been budgeted for the extra costs incurred by the minimum days of elementary schools.
8. A contribution of \$750,000 to the Post-employment Benefits Fund (Fund 20) has been budgeted to reserve for the implementation of GASB 45.

ASSUMPTIONS USED FOR MULTIYEAR PROJECTION:

The District is using the following assumptions to prepare the multiyear projection in the 2nd Interim Report:

- That enrollment in the District continues to decline and is expected to decline by 421 students in 2008-09. To assist in the projection of student enrollment, the District contracted with DecisionInsite to perform long-range enrollment projections. The report produced by DecisionInsite reflected two different projections. A conservative number that showed very steep enrollment declines and a more moderate calculation that reflected a slower decline. For the purposes of this report the moderate projection is used to estimate enrollment and the corresponding ADA.

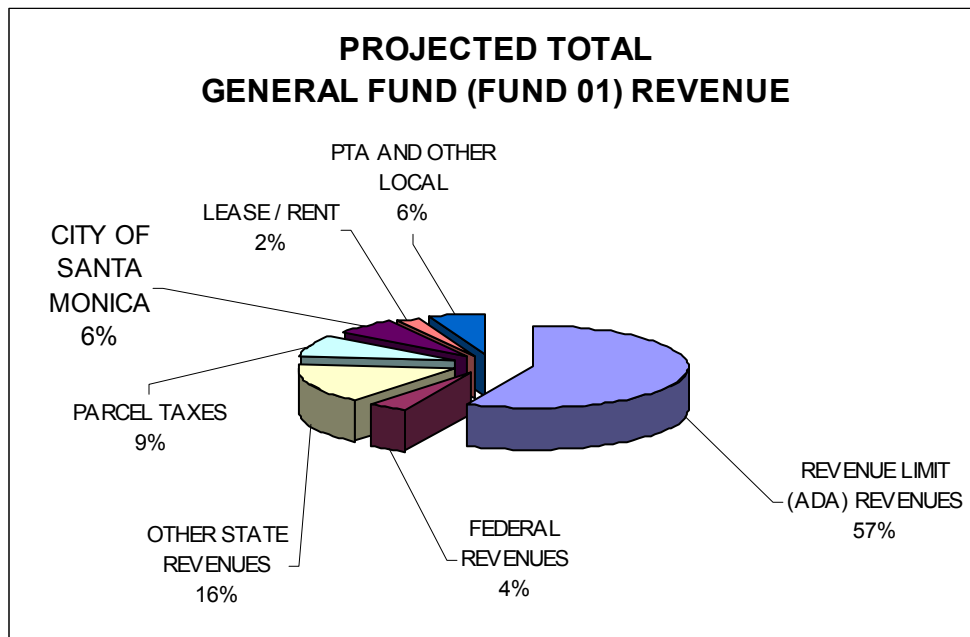
- The Board of Education took action on February 21, 2008 that slightly altered the Inter-District Permit policy in the District. The impact of that change could reduce the enrollment decline in the 2008-09 fiscal year. Until a complete analysis of the impact of this policy change is done, staff has not included additional enrollment.
- In anticipation of declining enrollment the multiyear projections reflect a reduction of teaching staff. Those changes are reflected on the attached spreadsheet entitled, Multiyear Projection Assumptions. The chart shows a reduction of 9.5 FTEs in 2008-09 and 13 FTEs in 2009-10.
- Another significant factor in the Multiyear projections is the impact of the State budget. Revenue limit projections reflect a statutory COLA of 4.94% with a 6.99% deficit applied.
- Special Education and other Categorical programs are expected to receive funding reductions of 6.5%,
- Although the District has started discussing the 2008-09 Budget for the District and expects to be making expenditure cuts in excess of 2.2 million dollars, until those reductions are approved by the Board of Education they are not reflected in these projections. Because of this the 2008-09 and 2009-10 fiscal years reflect significant deficit spending. It should be anticipated that deficit spend will be reduced when the Board approved a final budget for 2008-09.

The Following pages include a General Fund - Revenue Summary and a General Fund Expenditure Summary, as well as individual summaries for major funds and a Multi-Year Projection for the Unrestricted General Fund. The following documents are included as Attachment A: *2007-08 Second Interim Budget Assumptions* and the complete *SACS Report*.

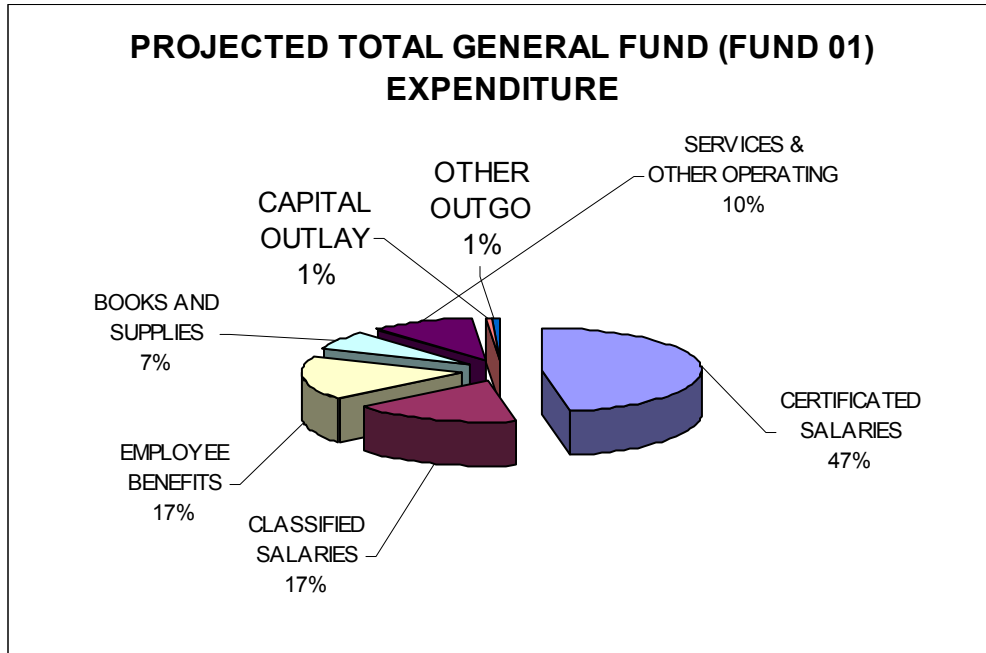
MOTION MADE BY:
 SECONDED BY:
 STUDENT ADVISORY VOTE:
 AYES:
 NOES:

**SANTA MONICA-MALIBU UNIFIED SCHOOL DISTRICT
2007-08 SECOND INTERIM BUDGET SUMMARY
GENERAL FUND**

BEGINNING BALANCE	\$ 23,433,892
PROJECTED REVENUES:	
REVENUE LIMIT (ADA) REVENUES	66,916,782
FEDERAL REVENUES	4,664,121
OTHER STATE REVENUES	18,275,248
PARCEL TAXES	10,607,877
CITY OF SANTA MONICA	7,227,100
LEASE / RENT	2,642,412
PTA AND OTHER LOCAL	7,003,174
INTERFUND TRANSFERS	1,000,000
TOTAL REVENUES:	118,336,714
TOTAL AVAILABLE FUNDS:	\$ 141,770,606



PROJECTED EXPENDITURES:		
CERTIFICATED SALARIES	\$	58,624,499
CLASSIFIED SALARIES		20,549,686
EMPLOYEE BENEFITS		21,652,868
BOOKS AND SUPPLIES		8,470,035
SERVICES & OTHER OPERATING		12,915,278
CAPITAL OUTLAY		910,072
OTHER OUTGO		864,504
TOTAL EXPENDITURES:		123,986,942
PROJECTED FUND BALANCE:	\$	17,783,664



2007-08 MAJOR CATEGORICAL PROGRAMS

	2007-08 ADOPTED BUDGET	2007-08 1ST INTERIM BUDGET	2007-08 2ND INTERIM BUDGET	CHANGE
FEDERAL PROGRAMS				
TITLE I :BASIC	1,025,321	1,169,960	1,142,043	(27,917)
TITLE II :TEACHER QUALITY	415,024	489,211	482,752	(6,459)
TITLE II: ENHANCING ED THROUGH TECH	10,586	20,561	20,173	(388)
TITLE III : LEP	131,699	222,329	243,295	20,966
TITLE IV: DRUG FREE SCHOOL	50,093	54,271	47,760	(6,511)
TITLE V: INNOVATION EDUCATION	8,567	9,561	11,647	2,086
VOC: CARL PERKINS II	48,764	48,764	48,764	-
MEDICAL REIMBURSEMENT	125,000	125,000	125,000	-
SP ED: IDEA ENTITLEMENT	2,400,875	2,377,425	2,370,470	(6,955)
DEPT REHAB: TPP	131,377	131,377		(131,377)
TOTAL FEDERAL REVENUES:	4,347,306	4,648,459	4,491,904	(156,555)
STATE PROGRAMS				
SPECIAL EDUCATION - AB602	6,400,247	6,423,014	6,423,014	-
SP ED: WORKABILITY	56,820	58,056	58,056	-
GIFTED AND TALENTED EDUCATION	93,282	93,282	93,282	-
HOME TO SCHOOL TRANSPORTATION	465,632	465,632	465,632	-
SPECIAL ED TRANSPORTATION	427,076	427,076	427,076	-
ECONOMIC IMPACT AID	836,871	836,871	790,654	(46,217)
ENGLISH LANGUAGE ACQUISITION	67,600	60,700	60,700	-
TOBACCO-USE PREVENT ED: 4-8	16,226	16,226	16,013	(213)
SCHOOL SAFETY	197,895	197,895	212,824	14,929
INSTRUCTIONAL MATERIALS	772,200	772,200	825,718	53,518
CAHSEE INTENSIVE INSTR & SERVICES	-	95,648	95,648	-
LOTTERY -INSTRUCTIONAL MATERIALS	232,307	257,562	262,080	4,518
CAL SAFE: STUDENT SUPPORT	49,336	49,336	54,386	5,050
PEER ASSISTANCE AND REVIEW (PAR)	46,368	46,368	46,368	-
ADMINISTRATOR TRAINING (AB75/ 430)		27,000	18,000	(9,000)
ARTS AND MUSIC BLOCK GRANT	199,521	199,521	206,571	7,050
PUPIL RETENTION BLOCK GRANT	-	41,707	41,707	-
TEACHER CREDENTIALING (BTSA)	193,250	207,519	207,519	-
PROFESSIONAL DEVELOPMENT	540,180	561,940	561,940	-
TARGETED INSTR. IMPROVEMENT	519,687	540,622	540,622	-
SCHOOL AND LIBRARY IMPROVEMENT	798,975	805,835	805,835	-
SPPLMNTAL SCH COUNSELING	414,037	414,037	421,868	7,831
TOTAL STATE REVENUES	12,327,510	12,598,047	12,635,513	37,466

LOCAL GENERAL FUND CONTRIBUTION (LGFC)

	2007-08 ADOPTED BUDGET	2007-08 FIRST INTERIM	2007-08 SECOND INTERIM	CHANGES
SPECIAL EDUCATION	11,560,918	11,216,974	11,171,491	(45,483)
SPECIAL EDUCATION TRANSPORTATION	570,359	428,217	432,061	3,844
ENHANCED EDUCATION THROUGH TECHNOLOGY (EETT)	-	106,827	106,827	-
ADMINISTRATOR TRAINING (AB75/AB430)	-	9,000	9,000	-
NATIONAL BOARD CERTIFICATION	55,000	55,000	55,000	-
MULTI-CULTURE PROGRAM	500,000	500,000	500,000	-
VALUED YOUTH PROGRAM	80,000	4,771	4,771	-
STUDENT OUTREACH PROGRAM-SAMOHI	379,622	-	-	-
REGIONAL OCCUPATIONAL PROGRAM	8,700	8,700	8,700	-
BARNUM HALL	-	164,630	164,630	-
ON GOING MAINTENANCE PROGRAM	3,598,699	3,541,734	3,521,280	(20,454)
TOTAL CONTRIBUTION:	16,753,298	16,035,853	15,973,760	(62,093)

MULTI-YEAR PROJECTION

ASSUMPTIONS

Factor	2007-08	2008-09	2009-10
Statutory COLA	4.53%	4.94%	3.00%
Base Revenue Limit Per P2 ADA	\$ 5,879.84	\$ 6,167.84	\$ 6,351.84
Deficit Factor	(.05%)	(6.99%)	(6.99%)
Enrollment Projection	11,652	11,231	10,839
Decline Enrollment from Prior Year	(250)	(421)	(392)
ADA Projection	11,103	10,702	10,329
Revenue Limit ADA (Prior Yr)	11,360	11,103	10,702
Federal Revenues	0%	0%	0%
City of Santa Monica	\$ 7,227,100	\$ 7,443,913	\$ 7,667,230
Measure "Y"	\$ 3,921,000		
Measure "S"	\$ 6,573,000		
Measure "R"		\$ 10,245,486	\$ 10,552,851
Lottery	\$143/ADA	\$143/ADA	\$143/ADA
Special Ed - State	4.53%	(6.5%)	0.00%
Salary Increase: Certificated	3%	0%	0%
Salary Increase: Management	0%	0%	0%
Salary Increase: Classified	0%	0%	0%
Step & Column Incr. - Certificated	2.20%	2.20%	2.20%
Step & Column Incr. - Mgmt.	1.50%	1.50%	1.5%
Step & Column Incr. - Classified	1.50%	1.50%	1.50%
FTE Adjustment vs Enrollment	(21.6 FTEs)	(9.5 FTEs)	(13 FTEs)
Health/Welfare	10%	0%	0%
Indirect Cost Rate	5.29%	5.00%	5.00%
Interest Rate	5.00%	5.00%	5.00%
Interfund Transfer from Fund 21	\$ 1,000,000	\$ 1,000,000	\$ 1,000,000
Interfund Transfer to Fund 12 & 20	\$ 825,000	\$ 75,000	\$ 75,000
Ongoing Maintenance	3%	3%	3%
Reserve for Uncertainties	3%	3%	3%

***Measure "R" will replace Measure "Y" and "S" in 2008-09 Fiscal Year.**

MULTYEAR PROJECTION:

Description	2007-08 2ND INTERIM	2008-09 PROJECTION	2009-10 PROJECTION
Revenue:			
Revenue Limit	64,877,928	62,115,258	61,587,463
Other Federal	40,840	40,840	-
Other State Apportionments	714,308	729,302	732,679
Class Size Reduction	3,310,461	3,156,621	3,205,233
Other State (Lottery...)	1,495,987	1,462,072	1,442,400
City of Santa Monica	7,227,100	7,443,913	7,667,230
All Other Local Income	8,421,270	7,742,604	7,848,828
Interfund Transfer In	1,000,000	1,000,000	1,000,000
Local General Fund Contribution	(12,361,711)	(13,101,317)	(13,352,018)
	74,726,183	70,589,293	70,131,815
Expenditure:			
Certificated Salaries	43,825,665	44,120,920	44,744,089
Classified Salaries	9,790,280	9,937,134	10,086,191
Benefits	14,452,248	14,876,933	15,321,559
Supplies/Books	887,575	887,575	887,575
Other Operational Costs	6,357,125	5,975,698	5,975,698
Capital Outlay	78,078	-	-
Transfers	6,800	6,800	6,800
Indirect	(1,076,976)	(1,062,367)	(850,000)
Debt Services (COPs)	6,730	-	-
Transfer Out	825,000	75,000	75,000
	75,152,525	74,817,693	76,246,912
Increase (Decrease) Fund Balance	(426,342)	(4,228,400)	(6,115,097)
Beginning Fund Balance	16,682,781	16,256,439	12,028,038
Fund Balance as of 6/30/08	16,256,439	12,028,038	5,912,941
Reserve- Revolving Cash, store	50,000	50,000	50,000
Total Reserve	16,206,439	11,978,038	5,862,941
3% Required Reserve	3,719,608	3,622,196	3,647,947
Unappropriated Balance	12,486,831	8,351,240	2,214,994
District Reserve %	13.07%	9.92%	4.82%

91% of Unrestricted General Fund Budget goes to personnel cost.

SUMMARY BUDGET OF MAJOR FUNDS

FUND 01: UNRESTRICTED GENERAL FUND

	2007-08 ADOPTED BUDGET	2007-08 1ST INTERIM	2007-08 2ND INTERIM	CHANGES
BEGINNING BALANCE	16,682,781	16,682,781	16,682,781	-
REVENUES				
REVENUE LIMIT	65,032,563	65,019,975	64,877,928	(142,047)
FEDERAL REVENUE	80,000	80,000	40,840	(39,160)
OTHER STATE REVENUE	5,478,184	5,528,536	5,520,756	(7,780)
LOCAL REVENUES	14,693,577	14,693,577	15,648,370	954,793
INTERFUND TRANSFER	(12,641,249)	(11,923,804)	(11,361,711)	562,093
TOTAL REVENUES	72,643,075	73,398,284	74,726,183	1,327,899
EXPENDITURES				
CERTIFICATED SALARIES	43,216,721	42,755,259	43,825,665	1,070,406
CLASSIFIED SALARIES	9,641,252	9,665,054	9,790,280	125,226
EMPLOYEE BENEFITS	14,944,681	15,196,004	14,452,248	(743,756)
BOOKS AND SUPPLIES	849,532	784,970	887,575	102,605
SERVICES & OTHER OPERATING	5,690,099	6,143,786	6,357,125	213,339
CAPITAL OUTLAY	11,494	31,555	78,078	46,523
OTHER OUTGO	(808,412)	(208,314)	(238,446)	(30,132)
TOTAL EXPENDITURES	73,545,367	74,368,314	75,152,525	784,211
DEFICTING SPENDING	(902,292)	(970,030)	(426,342)	543,688
PROJECTED FUND BALANCE	15,780,489	15,712,751	16,256,439	543,688

FUND 01 - RESTRICTED GENERAL FUND

	2007-08 ADOPTED BUDGET	2007-08 1ST INTERIM	2007-08 2ND INTERIM	CHANGES
BEGINNING BALANCE	6,751,111	6,751,111	6,751,111	-
REVENUES				
REVENUE LIMIT	2,215,503	2,215,503	2,038,854	(176,649)
FEDERAL REVENUE	4,347,306	4,648,459	4,623,281	(25,178)
OTHER STATE REVENUE	5,996,862	6,261,575	6,331,478	69,903
LOCAL REVENUES	15,348,646	17,247,266	18,255,207	1,007,941
INTERFUND TRANSFER	13,141,249	12,423,804	12,361,711	(62,093)
TOTAL REVENUES	41,049,566	42,796,607	43,610,531	813,924
EXPENDITURES				
CERTIFICATED SALARIES	13,914,725	14,363,507	14,798,834	435,327
CLASSIFIED SALARIES	9,982,658	10,600,966	10,759,406	158,440
EMPLOYEE BENEFITS	7,454,101	7,701,163	7,200,620	(500,543)
BOOKS AND SUPPLIES	3,167,433	7,236,983	7,582,460	345,477
SERVICES & OTHER OPERATING	5,504,737	6,179,062	6,558,153	379,091
CAPITAL OUTLAY	46,200	697,498	831,994	134,496
OTHER OUTGO	910,706	1,057,713	1,102,950	45,237
TOTAL EXPENDITURES	40,980,560	47,836,892	48,834,417	997,525
PROJECTED FUND BALANCE	6,820,117	1,710,826	1,527,225	(183,601)

FUND 11- ADULT EDUCATION

	2007-08 ADOPTED BUDGET	2007-08 1ST INTERIM	2007-08 2ND INTERIM	CHANGES
BEGINNING BALANCE	243,198	243,198	243,198	-
REVENUES				
FEDERAL REVENUE	143,860	146,600	146,600	-
OTHER STATE REVENUE	684,027	735,642	524,534	(211,108)
LOCAL REVENUES	62,500	62,500	42,516	(19,984)
TOTAL REVENUES	890,387	944,742	713,650	(231,092)
EXPENDITURES				
CERTIFICATED SALARIES	431,060	417,848	415,619	(2,229)
CLASSIFIED SALARIES	187,694	199,922	199,922	-
EMPLOYEE BENEFITS	157,011	158,260	144,931	(13,329)
BOOKS AND SUPPLIES	27,063	54,695	53,505	(1,190)
SERVICES & OTHER OPERATING	24,852	41,737	41,737	-
CAPITAL OUTLAY	-	-	-	-
OTHER OUTGO	28,793	28,793	28,793	-
TOTAL EXPENDITURES	856,473	901,255	884,507	(16,748)
PROJECTED FUND BALANCE	277,112	286,685	72,341	(214,344)

PROGRAMS				
BASE REVENUE LIMIT PER ADA	2,645.30	2,645.30	2,645.30	-
PROJECTED ANNUAL ADA	240.00	240.00	161.00	(79.00)
TOTAL REVENUE FROM ADA	634,872	634,872	425,893	(208,978.70)
FEDERAL PROGRAM	143,860	146,600	146,600	-
COMMUNITY-BASED ENGLISH TUTOR PROGRAM	52,131	100,770	100,770	(209,058)

FUND 12 - CHILD DEVELOPMENT FUND

	2007-08 ADOPTED BUDGET	2007-08 1ST INTERIM	2007-08 2ND INTERIM	CHANGES
BEGINNING BALANCE	113,067	113,067	113,067	-
AUDIT ADJUSTMENT			(82,542)	(82,542)
REVENUES				
FEDERAL REVENUE	1,470,098	1,704,433	1,711,819	7,386
OTHER STATE REVENUE	3,197,315	3,238,409	3,461,530	223,121
LOCAL REVENUES	2,871,837	2,882,469	2,909,499	27,030
INTERFUND TRANSFER	75,000	75,000	75,000	-
TOTAL REVENUES	7,614,250	7,900,311	8,157,848	257,537
EXPENDITURES				
CERTIFICATED SALARIES	2,842,659	2,880,011	2,942,630	62,619
CLASSIFIED SALARIES	2,062,798	2,183,676	2,122,292	(61,384)
EMPLOYEE BENEFITS	1,415,914	1,485,946	1,402,873	(83,073)
BOOKS AND SUPPLIES	699,595	753,306	352,782	(400,524)
SERVICES & OTHER OPERATING	279,641	280,446	668,489	388,043
CAPITAL OUTLAY	7,000	7,000	9,850	2,850
OTHER OUTGO	306,644	309,539	317,571	8,032
TOTAL EXPENDITURES	7,614,251	7,899,924	7,816,487	(83,437)
PROJECTED FUND BALANCE	113,066	113,454	371,886	340,974

CDC MAJOR PROGRAMS				
FEDERAL BLOCK GRANT	169,061	169,061	160,495	(8,566)
HEAD START	1,092,494	1,310,862	1,342,781	31,919
OTHER FEDERAL PROGRAMS	221,516	237,483	208,543	(28,940)
STATE PRESCHOOL (GCTR)	1,499,316	1,499,316	1,447,983	(51,333)
GENERAL CHILD CARE	2,430,747	2,482,341	2,433,786	(48,555)
LATCHKEY (GLTK)	454,145	454,145	463,950	9,805
CALSAFE CHILD CARE & DEVELOP	239,892	239,892	239,892	-
SM PRESCHOOL COLLABOATIVE	-	-	-	-
L. A. UNIVERSAL PRESCHOOL	475,495	475,495	475,495	-
ST JOHN'S : INFANT FAMILY	142,000	142,000	142,000	-

FUND 13: CAFETERIA SPECIAL FUND

	2007-08 ADOPTED BUDGET	2007-08 1ST INTERIM	2007-08 2ND INTERIM	CHANGES
BEGINNING BALANCE	379,508	379,508	379,508	-
REVENUES				
FEDERAL REVENUE	984,004	984,004	984,404	400
OTHER STATE REVENUE	56,690	56,690	56,690	-
LOCAL REVENUES	2,755,208	2,755,208	2,270,845	(484,363)
TOTAL REVENUES	3,795,902	3,795,902	3,311,939	(483,963)
EXPENDITURES				
CLASSIFIED SALARIES*	1,471,059	1,467,159	1,436,046	(31,113)
EMPLOYEE BENEFITS	554,540	551,794	496,658	(55,136)
BOOKS AND SUPPLIES	1,465,714	1,465,714	1,465,714	-
SERVICES & OTHER OPERATING	100,950	108,050	(278,071)	(386,121)
CAPITAL OUTLAY	35,000	32,000	35,000	3,000
OTHER OUTGO	168,167	168,167	153,374	(14,793)
TOTAL EXPENDITURES	3,795,430	3,792,884	3,308,721	(484,163)
PROJECTED FUND BALANCE	379,980	382,526	382,726	200

FUND 14: DEFERRED MAINTENANCE FUND

	2007-08 ADOPTED BUDGET	2007-08 1ST INTERIM	2007-08 2ND INTERIM	CHANGES
BEGINNING BALANCE	4,734,384	4,734,384	4,734,384	-
REVENUES				
OTHER STATE REVENUE	500,000	500,000	500,000	-
LOCAL REVENUES	200,000	200,000	200,000	-
INTERFUND TRANSFER	500,000	500,000	523,561	23,561
TOTAL REVENUES	1,200,000	1,200,000	1,223,561	23,561
EXPENDITURES				
BOOKS AND SUPPLIES	-	-	-	-
SERVICES & OTHER OPERATING	489,541	800,404	973,904	173,500
CAPITAL OUTLAY	1,613,180	1,764,988	1,764,988	-
TOTAL EXPENDITURES	2,102,721	2,565,392	2,738,892	173,500
PROJECTED FUND BALANCE	3,831,663	3,368,992	3,219,053	(149,939)

FUND 19: FOUNDATION SPECIAL REVENUE FUND

	2007-08 ADOPTED BUDGET	2007-08 1ST INTERIM	2007-08 2ND INTERIM	CHANGES
BEGINNING BALANCE	161,744	161,744	161,744	-
REVENUES				
LOCAL REVENUES	284,206	301,236	331,381	30,145
TOTAL REVENUES	284,206	301,236	331,381	30,145
EXPENDITURES				
CERTIFICATED SALARIES	216,782	226,972	262,242	35,270
EMPLOYEE BENEFITS	61,424	62,201	60,609	(1,592)
BOOKS AND SUPPLIES	2,000	30,195	28,261	(1,934)
SERVICES & OTHER OPERATING	4,000	13,311	11,712	(1,599)
CAPITAL OUTLAY	-	-	-	-
OTHER OUTGO	-	-	-	-
TOTAL EXPENDITURES	284,206	332,679	362,824	30,145
PROJECTED FUND BALANCE	161,744	130,301	130,301	-

FUND 21: BUILDING FUND

	2007-08 ADOPTED BUDGET	2007-08 1ST INTERIM	2007-08 2ND INTERIM	CHANGES
BEGINNING BALANCE	588,678	588,678	588,678	
REVENUES				
LOCAL REVENUES	25,000	25,000	2,425,000	2,400,000
2006 BB BOND SERIES A		60,000,000	60,000,000	60,000,000
TOTAL REVENUES	25,000	60,025,000	62,425,000	60,000,000
EXPENDITURES				
CLASSIFIED SALARIES	35,712	242,530	242,530	-
EMPLOYEE BENEFITS	10,258	84,793	84,793	-
BOOKS AND SUPPLIES	-	56,600	56,600	-
SERVICES & OTHER OPERATING	60,000	1,634,733	1,661,233	26,500
CAPITAL OUTLAY	-	85,000	85,000	-
OTHER OUTGO	500,000	500,000	1,000,000	500,000
TOTAL EXPENDITURES	605,970	2,603,656	3,130,156	526,500
PROJECTED FUND BALANCE	7,708	58,010,022	59,883,522	1,873,500

TO: BOARD OF EDUCATION

ACTION/MAJOR

03/13/08

FROM: DIANNE TALARICO / JANECE L. MAEZ

RE: APPOINTMENT OF THE FIRM OF NIGRO NIGRO & WHITE PC AS
DISTRICT AUDITOR FOR FISCAL YEARS 2007-08 THROUGH 2009-
10

RECOMMENDATION NO. A.19

It is recommended that the Board of Education approve the appointment of the auditing firm of Nigro Nigro & White PC, to perform the district's financial auditing services for fiscal years 2007-08 through 2009-10. It is also recommended that staff be directed to return the firm's formal engagement letter and prepare appropriate contract documents.

COMMENT: In accordance with Education Code (EC) Sections 41020 through 41020.8, all school districts are required to file annual audit reports with both the County Office of Education and the State Controller's Office by December 15th each year. The audits must be performed by a licensed professional firm, qualified and experienced in such work. The law also prohibits the same individual to be the responsible party on the audit for more than six (6) consecutive years. In most cases, this means the principal partner or manager on an audit will change every 6 years.

For the past 6 six years the audits for Santa Monica Malibu Unified have been done by Roy J. Blair, CPA. Because Mr. Blair works independently and is essentially a sole proprietor, he was unable to shift the work he preformed to another individual. The District was placed in the position to select another firm for auditing services. In order to solicit interest in the District and obtain a competitive fee for these services, staff prepared and issued a Request For Proposal (RFP) for Independent Audit Services.

The RFP was issued on January 25, 2008, by mailing the document to seven potential audit firms. Additionally, the appropriate legal postings were published in local newspapers. The seven firms that received the RFP were selected from a list of potential audit firms provided by the Los Angeles County Office of Education (LACOE). The names of those firms have been included as back-up material to this item.

The closing date for the RFP was Friday, February 22, 2008. The District received responses from five (5) of seven (7) firms that were sent the RFP originally. Two (2) of the firms declined to submit proposals at this time. The three (3) proposals received were deemed complete upon review by District staff. Mandatory criteria for acceptance included the following:

1. Be an independent auditor properly licensed as a Certified Public Accountant
2. Must meet the independence standards of the GAO Standards for Audit of Governmental Organizations, Program, Activities and Functions.
3. Proposer does not have a record of sub-standard audit work.
4. Proposer has prior experience auditing similar size school district in California

Beyond the mandatory criteria staff evaluated each of the proposals based on technical and cost criteria. The technical review looked at:

1. The responsiveness of the proposal in clearly stating an understanding of the work
2. That timelines of each major segment of the work plan were realistic
3. The qualifications of supervisory personnel
4. The general direction and supervision to be exercised over the audit team
5. The size and structure of the firm

Although each firm was unique, they were all highly qualified with a great deal of experience in the field of school district audits. After considering the fee proposed by each, staff is recommending the selection of Nigro Nigro & White (NNW), the firm with the lowest cost. The first year cost in the proposals ranged between a low of \$45,000 to a high bid of \$54,000. To support this decision, staff contacted three of the many references in the NNW proposal and received very favorable comments in each case.

(Continued on next page)

Included in the backup material is a copy of the engagement letter provided by Nigro Nigro & White. If directed staff will sign and return this letter and prepare our standard contract documents, we expect the initial fieldwork of the firm to begin as soon as these documents are finalized.

Copies of the RFP and each of the responses are available for review at the District Office.

MOTION MADE BY:
SECONDED BY:
STUDENT ADVISORY VOTE:
AYES:
NOES:

TO: BOARD OF EDUCATION

ACTION/MAJOR

03/13/08

FROM: DIANNE TALARICO / TIMOTHY R. WALKER /
CHIUNG-SALLY CHOU

RE: ESTABLISH POSITION - COUNSELOR - EARLY CHILDCARE AND
EDUCATION WORKFORCE INITIATIVE

RECOMMENDATION NO. A.20

It is recommended that the Board of Education establish a new position: Counselor, Early Childcare and Education Workforce Initiative, in order to facilitate the Early Start pathway for Early Childhood Education partnership with Santa Monica College. This position would work with students at Santa Monica High School to achieve the goals of the Los Angeles Universal Preschool (LAUP) Early Care and Workforce Initiative.

COMMENT: The goals of the district as related to the Early Childcare and Education Workforce Initiative include: increasing the number of high school students pursuing careers and education in Early Childhood Education, increasing the grade performance, college readiness, and/or success of students, and removing barriers among institutions of education and providing accessible pathways to early childhood education.

While a more comprehensive job description will be developed in collaboration with the Personnel Commission, a brief outline of the job duties are as follows:

- Recruit high school students for participation in the Early Start Pathway;
- Provide career planning and advising services to students enrolled in the Early Start Pathway;
- Offer individual and group counseling sessions to students enrolled in the Early Start Pathway;
- Develop educational plans for each student enrolled in the Early Start Pathway;
- Provide tutoring and other supplemental instructional support for high school students enrolled in the Early Start Pathway;
- Participate in meetings of the Early Start Pathway Joint Advisory Committee

SPECIAL NOTE: Funding is provided for the 2007-08 school year through a grant from Los Angeles Universal Preschool and Santa Monica College.

MOTION MADE BY:

SECONDED BY:

STUDENT ADVISORY VOTE:

AYES:

NOES:

TO: BOARD OF EDUCATION

ACTION/MAJOR

03/13/08

FROM: DIANNE TALARICO / TIMOTHY R. WALKER /
MICHAEL D. MATTHEWS

RE: ESTABLISH POSITION - MENTAL HEALTH COUNSELOR (PUPIL
SERVICES) - 60%

RECOMMENDATION NO. A.21

It is recommended that the Board of Education establish a new position, Counselor in Pupil Services, in order to better serve the needs of the district. This part-time position would coordinate school-based mental health services provided by community agencies for students at Santa Monica High School and the district's Community Day School.

COMMENT: Certain mental health services at Santa Monica High School have been eliminated due to budget reductions, thus leaving a gap in services to students who need sustained interventions from mental health professionals. The Department of Mental Health and other agencies are eager to provide counselors to students who qualify, but a single person is needed to coordinate and follow-up on referrals to outside agencies, as well as immediate intervention and support at both Santa Monica High School and Community Day School. This position would provide effective coordination of these services and consistent collaboration between agencies and the schools, counselors and administrators.

While a more comprehensive job description will be developed in collaboration with the Personnel Commission, a brief outline of the job duties are as follows:

- Liaison between mental health providers and SMMUSD counselors, principals, and central office staff;
- Receive and discuss mental health referrals from high school counselors;
- Determine eligibility for DMH services (Medi-Cal, Healthy Families);
- Oversee the referral process by contacting students, families, agencies, and following-up to insure services;
- Provide direct counseling services for individuals and groups of students at school sites on a regular basis and as needed;
- Participate in staff development for school site counselors;

- Participate in crisis response team as needed;
- Work under the direction of the Pupil Services Department.

SPECIAL NOTE: Funding will be provided through the State Supplemental Counseling budget.

MOTION MADE BY:
SECONDED BY:
STUDENT ADVISORY VOTE:
AYES:
NOES:

TO: BOARD OF EDUCATION

ACTION/MAJOR

03/13/08

FROM: DIANNE TALARICO / TIMOTHY R. WALKER /
MICHAEL D. MATTHEWS

RE: ESTABLISH POSITION - SPEECH LANGUAGE PATHOLOGY
ASSISTANT (SLPA)

RECOMMENDATION NO. A.22

It is recommended that the Board of Education establish a new position, Speech Language Pathology Assistant (SLPA), in order to better serve the needs of the district. Given the extreme shortage of Speech Pathologists, the State of California has authorized a new position, the Speech Language Pathology Assistant (SLPA), as an alternative for providing Speech and Language therapy. A SLPA holds a certificate issued through a two-year community college program and is able to work within the school setting, under the supervision of a licensed school Speech and Language Pathologist.

COMMENT: A Speech Language Pathology Assistant will provide support to students and staff in the Speech Therapy Program; provide speech therapy services to special education students in accordance with the Individual Education Program (IEP) prescriptions, perform duties in support of case management of services for students and maintain records and documentation on students; and perform related duties as required.

While a more comprehensive job description will be developed in collaboration with the Personnel Commission, a brief outline of the job duties are as follows:

- Provide speech therapy according to Individual Education Program (IEP) goals and the intervention plan developed for the student;
- Assist the speech-language specialist in the assessment of students' communication skills;
- If able, provide written and oral translations in Spanish for IEPs, parent groups, community groups, program publicity and correspondence;
- Assist with the development of IEP goals and objectives;
- Provide assistance to educational staff as part of case management through consultation, training and direct individual and group activities;
- Document student progress toward IEP goals and objectives by preparing charts, records, graphs, or other means of documentation;
- Prepare therapy materials and/or equipment for use in the classroom and therapy activities such as picture cards, worksheets and audio equipment;

- Adapt or modify instructional materials as determined by student needs for teacher use in the classroom;
- Check and maintain augmentative communication devices and equipment;
- Assist in a variety of clerical tasks such as keeping records, files and reports related to assigned students.

MOTION MADE BY:
SECONDED BY:
STUDENT ADVISORY VOTE:
AYES:
NOES:

TO: BOARD OF EDUCATION

ACTION/MAJOR

03/13/08

FROM: DIANNE TALARICO / JANECE L. MAEZ

RE: APPROVAL OF ADDITIONAL MEASURE "BB" PROJECTS AND
DIRECTION TO STAFF REGARDING ACCELERATION OF THE
PROGRAM, CAPITALIZATION OF REDEVELOPMENT AGENCY FUNDS,
AND USE OF INTEREST EARNINGS

RECOMMENDATION NO. A.23

It is recommended that the Board of Education approve additional Measure "BB" funding allocations as listed:

John Adams Middles School	\$12,000,000
Lincoln Middle School	\$16,000,000
Malibu Middle School	\$14,000,000
TOTAL	\$42,000,000

Additionally it is recommended that staff be directed to accelerate the funding of the program, move forward with the capitalization of Redevelopment Agency funds, and use interest earnings on bond fund within the program.

COMMENT: Measure "BB," a General Obligation Bond, giving the Santa Monica Malibu Unified School District the ability to issue debt for capital projects, was approved by voters in November 2006. Total amount available to the district from this election equaled \$268 million. The district has been developing plans and working towards utilizing these funds since the fall of 2006. Examples of the activities completed to date are:

- Established the required Prop 39 Oversight Committee and adopted By-laws for the Committee to operate in December 2006. The committee is expected to have the first annual meeting on April 9, 2008.
- Established a Measure "BB" Advisory Committee to assist the board with decisions regarding allocation of these funds in early 2007. The committee has met once or twice a month since that time, with regular reporting and recommendations to the board.
- The first series of bonds, totaling \$60 million, were issued, and funds were received during the fall of 2007.
- The Board of Education and the Measure "BB" Advisory Committee met in mid-2007 in a joint meeting, at which time a commitment to secondary programs was established.

- The board adopted allocation recommendations made by the Measure "BB" Advisory Committee on October 18, 2007. The October 18, 2007, allocations approved by the board included: Santa Monica High School (\$57.0 million), Malibu High (\$13.5 million), Edison Language Academy (\$24.5 million), Olympic High School/Washington West (\$6.0 million), and technology (\$10.0 million).
- The board received information regarding additional funding opportunities from staff on January 17, 2008. The information included the following:
 - **Accelerated Measure "BB" Program** - The original "BB" budgets were based on an eight-year program and contained a reserved amount for cost escalation over that time. By shortening the program into six years, that escalation factor will be significantly less, allowing for more of the bond proceeds to go directly towards project construction. Staff has reviewed this program with the Financial Oversight Committee, who took action at the December meeting in support of the acceleration of the program.
 - **Redevelopment Agency Funds** - Staff has been working with the district's financial advisors at Piper Jaffray to explore the possibility of utilizing a future revenue stream of Redevelopment Agency Funds for current Measure "BB" projects. Staff will report on the capitalization of these funds.
 - **Additional Interest Earned** - Due to the accelerated receipt of bond proceeds, there will be additional interest earned in the program and available for projects.
 - **State Matching Funds** - Staff and district consultants at Parsons have begun reviewing state eligibility for matching funds. This review should be completed before the end of the fiscal year.

Staff demonstrated that these additional revenue sources would increase that amount of unallocated construction dollars from \$38 million to \$62 million.

On February 21, 2008, the Measure "BB" Advisory Committee recommended that the board to a portion of this additional revenue and approve funding allocations for additional sites. The motion approved by the committee was to allocate funding to the following middle school projects:

John Adams Middles School	\$12,000,000
Lincoln Middle School	\$16,000,000
Malibu Middle School	\$14,000,000
TOTAL	<u>\$42,000,000</u>

The "BB" Committee also recommended that allocations to projects at the high school, middle schools, and Edison Language Academy should be considered budget targets to guide the site based teams to be refined during schematic design and cost estimating, while retaining a commitment to project quality and to the educational program.

The programming and schematic design phases of all projects are moving forward at this time and should be completed in early summer 2008. Approval of these additional allocations will assist in directing staff with that process. Formal approval of the accelerated program concept and the capitalization of Redevelopment Agency Funds will also give staff necessary direction.

NOTE: The scopes of work and budget allocations may be adjusted according to the analysis of the enrollment study by DecisionInsite.

MOTION MADE BY:
SECONDED BY:
STUDENT ADVISORY VOTE:
AYES:
NOES:

TO: BOARD OF EDUCATION

ACTION/MAJOR

03/13/08

FROM: DIANNE TALARICO / JANECE L. MAEZ / VIRGINIA I. HYATT

RE: APPROVAL OF SCHOOL FACILITY STANDARDS

RECOMMENDATION NO. A.24

Incorporated within the development of the district's Facility Master Plan (FMP) is the fundamental need to assess current facilities needed to support the district's instructional program. The purpose with this agenda item is to redefine some of these standards, based on current and future needs, which is necessary to continue to move the facility master planning effort forward.

The current district standards used for classroom, administrative, general support spaces, and specialty rooms were developed by Applied Management & Planning Group (AMPG) in 1997. Recommended changes to these standards have been developed after extensive discussion with various program stakeholders and to address current State Standards. If no reference is made to a site specific program space, it is because the current standard was satisfactory and will remain unchanged. These standards were discussed with the Board of Education on April 25, 2007. It is now recommended that the board approve these standards so that they may be incorporated into the design standards.

Proposed Standards are attached.

MOTION MADE BY:

SECONDED BY:

STUDENT ADVISORY VOTE:

AYES:

NOES:

STANDARDS (2007)	Count	Sq. Footage	Notes	COMMENTS
Childcare				
All Elementaries	< 6		Up to 6 classrooms for childcare/pre-school	District sponsored except Webster - YMCA contract
Special Ed				
SDC - Mild to Moderate	2	960	Bathrooms in close proximity to room	All elementary schools
SDC/IS	3	1200	Bathroom, Hoyer lift & changing table for Pre-K, K/2, 3/5	Located at one north side, one south side & one Malibu ES
SDC/IS/Transition	1	1440	Bathroom, kitchenette & laundry room	All secondary schools. 3-4 rooms at Samohi
SDC/IS	1	960	OT clinic 480 sq ft and 4 office spaces	Located at one north side, one south side & one Malibu ES
Resource Room	1	960		1 per elementary, 3-4 per secondary
Elementary				
Kindergarten	Not less than 2	1200	Bathroom attached; adjacent dedicated play yard	20 students per Classroom
Grades 1 - 3	Per FMP capacity	960		20 students per Classroom
Grades 4 - 5	Per FMP capacity	960		30 students per classroom District wide; 25 per classroom - Edison Language Academy; SMASH 4-8 20 per classroom - Rogers
Computer Access grades K-5			See Technology Standards	
Cafetorium			7 sf interior space per 1/2 student population per CBC	CDE Code of 3 sf per ADA including outdoor space allows for less space per student
Flexible classrooms for science, music, art	2 to 3	960	2/site minimum, 3 on larger sites	
SM Crest - Lower K-3 City Crest - Upper 4/5	Shared space 2 to 5	960	2-5 rooms based on enrollment (except Pt Dume and Muir).	1 dedicated space for City CREST (SM only)
Lower Crest program			Dedicated office space if room is shared	Lower Crest programs share rooms with K-5

STANDARDS (2007)	Count	Sq. Footage	Notes	COMMENTS
Middle Schools				Core/Grade organization
Standard Classrooms	Per FMP capacity	960		
Designated Computer Lab	1	960	Combination of computer lab rooms and mobil units	Also see Technology Standards
Playfield/Hardcourt Space			Meet CDE Standards, accessible from classrooms and parking. Synthetic turf on all baseball and football fields	
Teen Center	1	960	1 room at each middle school	
Science labs, music, art and specialized rooms to meet site-specific programs		1200	Distribute science labs per core/grade organization	
After school programs				Lincoln, Adams
High Schools				House Organization
Standard Classrooms	Per FMP capacity	960		
Designated Computer Lab			Combination of computer lab rooms and mobil units	
Science labs, music, art and specialized rooms to meet site-specific programs	Per FMP capacity	1200	Centralize science labs	
Playfield/Hardcourt Space			See Facility Master Plan for school capacity	
Administrative, Community				See Education Specifications

TO: BOARD OF EDUCATION

ACTION/MAJOR

03/13/08

FROM: DIANNE TALARICO / JANECE L. MAEZ / VIRGINIA I. HYATT

RE: ACCEPTANCE OF ENROLLMENT PROJECTIONS AND THEIR IMPACT
ON THE MEASURE "BB" BOND PROGRAM

RECOMMENDATION NO. A.25

It is recommended that the Board of Education accept the enrollment figures as presented by DecisionInsite, and direct staff to advise architectural firms as to the associated impact on schematic design scope.

COMMENTS: DecisionInsite presented enrollment projections to the Board of Education during the board meeting on February 7, 2007. It was determined by staff that in order to proceed with the planning of the Measure "BB" program, that the enrollment figures for 2015 be used in the designing and planning of classroom spaces. The moderate enrollment trend was used (with the exception of Olympic High School, for which the enrollment number of 125 was used), and excluded SDC and permit student counts, as these students will be covered in the counts between the conservative and moderate trends. The Enrollment Standard Classroom Count spreadsheet is attached.

MOTION MADE BY:

SECONDED BY:

STUDENT ADVISORY VOTE:

AYES:

NOES:

SMMUSD Enrollment (DecisionInsite - Moderate) - Standard Classroom Count

Schools	2008 Enrollment (Actual) ¹	2015 Enrollment Trend (DecisionInsite) ²	Change	Existing Standard Classroom Count - FMP Fig. 3.3	Need - 2015	Original Measure BB Scope - Oct. 18 baseline	Proposed Measure BB - New ³	Proposed Measure BB - Removed	Net Change Measure BB	Remarks		
Elementary Schools	Cabrillo	294	344	50	15	16	0	0	0	0	Replace 2 pre-school classrooms with new	
	Edison	428	442	14	19	22	22	22	19	3	K-5 program only; 500 ft. zone near freeway; potential negative traffic impacts; budget increase required for K-5 base program	
	Franklin	769	710	-59	32	32	8	8	8	0	Revised scope: focus on replacement of relocatables to recover usable play areas	
	Grant	601	500	-101	29	22	10	0	0	0	Revised scope recommended. Additional classrooms not required. Focus on reconfiguration of controlled main entry, library access.	
	McKinley	393	387	-6	17	17	16	10	9	1	Revised scope recommended. Replan for SPE Suite with priority over new classrooms.	
	Muir	296	289	-7	16	13	2	2	3	-1	Replace 1 pre-school classroom with new	
	SMASH K-8	190	179	-11	11	9	0	0	0	0	0	
	Pt. Dume	283	298	15	14	13	0	0	0	0	0	Add 2 new pre-school classrooms
	Rogers	503	486	-17	31	24	2	0	3	-3	Revised scope: conversion of 3 "flexible" classrooms into "multi-purpose" space	
	Roosevelt	699	656	-43	32	29	18	10	9	1	Revised Scope: Replace relocatables. More cost effective to build in increments of 2	
Webster	395	415	20	20	19	6	3	3	0	Revised scope recommended. Replace 3 relocatables only.		
Middle/High Schools	Adams	943	859	-84	31	29	15	0	0	0	Revised scope recommended. Additional classrooms not required. Focus on relocation of Administrative Offices, reconfiguration into 3 grade/core areas with distributed Science labs.	
	Lincoln	1,131	1,143	12	31	39	12	12	12	0	In addition, replace 1 science lab with 2 new; new library; consolidation of 6th grade core on 2nd floor. Defer music and art to future program due to budgetary constraints.	
	Malibu MS	424	429	5								
	Malibu HS	719	537	-182	29	33	20	20	18	2	3 or 4 science labs in addition to classrooms, new library, new administration area.	
	Samohi	2,860	2,620	-240	97	88	24	20	14	6	Focus on completing one house in first phase and new library. Defer art building removal.	
Olympic ⁴	125	125	0	26	8	0	2	3	-1	Scope includes modernization of existing classrooms to meet specialized academic requirements		
Totals	11,053	10,419	-634	450	413	155	109	101	8		Overall classroom construction reduced from 155 to 109	
SDC	367	304	-63									
Grand Total	11,420	10,723	-697									

Notes: 1) Pre-school count not included; 2) Moderate Enrollment Trend recommended for Facility Planning. Does not include SDC count. Conservative trend: less than 9,000 students in 2017. Assumes Permit policy will not affect capacities at each school site; 3) Based upon latest programming workshops, scope and budget reconciliations; 4) Olympic revised to actual, current enrollment.

TO: BOARD OF EDUCATION

ACTION/MAJOR

03/13/08

FROM: DIANNE TALARICO / JANECE L. MAEZ / VIRGINIA I. HYATT

RE: PLANNING OF EDISON ELEMENTARY SITE - MEASURE "BB"
FACILITIES DESIGN SCOPE

RECOMMENDATION NO. A.26

It is recommended that the scope of Edison Elementary be designed as a K-5 facility. It is further recommended that the Board of Education allocate an additional \$6 million of unallocated Measure "BB" funds towards this project, for a total project cost of \$29 million.

COMMENTS: On October 18, 2007, the Board of Education approved the Measure "BB" project scope at Edison Elementary School in the amount of \$23 million for a K-8 program. Due to budget, site CDE standards, Air Quality issues, and traffic impacts to the area, it is recommended that the site be designed as a K-5 program. It is further recommended that staff explore the option of creating a 6-8 immersion program at John Adams Middle School in the Measure "BB" program to expand upon the K-5 program at Edison.

MOTION MADE BY:

SECONDED BY:

STUDENT ADVISORY VOTE:

AYES:

NOES:

TO: BOARD OF EDUCATION

ACTION/MAJOR

03/13/08

FROM: DIANNE TALARICO / JANECE L. MAEZ / VIRGINIA I. HYATT

RE: EVALUATE POTENTIAL TO DESIGN A CORE CLASSROOM AREA AT
JOHN ADAMS MIDDLE SCHOOL FOR 6-8 SPANISH IMMERSION
PROGRAM - MEASURE "BB" FACILITIES DESIGN

RECOMMENDATION NO. A.27

It is recommended that the Board of Education direct staff to evaluate the potential for a core classroom area to house the immersion program at John Adams Middle School.

COMMENTS: During the board workshop on March 5, 2007, the Board of Education directed staff to explore the option of creating a core classroom area on the John Adams site for the Spanish Immersion program. The goal would be to strengthen the already existing program on the site.

MOTION MADE BY:

SECONDED BY:

STUDENT ADVISORY VOTE:

AYES:

NOES:

TO: BOARD OF EDUCATION

ACTION/MAJOR

03/13/08

FROM: DIANNE TALARICO / JANECE L. MAEZ / VIRGINIA I. HYATT

RE: APPROVAL TO PROCEED WITH PLANNING OF THE OLYMPIC/
WASHINGTON WEST-EAST FACILITIES, PINE STREET/SPECIAL ED
EXIT PLAN, SPECIAL ED SUITE OF ROOMS - MEASURE "BB"
FACILITIES DESIGN

RECOMMENDATION NO. A.28

It is recommended that the Board of Education proceed with the development of Olympic, Washington West/East facilities, the Special Ed/Pine Street exit plan, and direct architectural firms to proceed with adding Special Ed suites at McKinley, Cabrillo, and Roosevelt Elementary Schools per the below discussion.

History:

During the October 18, 2007, Board of Education meeting, the Board directed staff to implement a plan to relocate Special Ed classrooms, Occupational Therapy, Physical Therapy, Child Care classrooms, and offices from the Olympic facility to an alternate site, thus enabling the development of the Olympic site as an expanded Continuation High School program, a possible Small School Learning Community, or other future uses. In addition, the Measure "BB" Advisory Committee recommended that the board adopt a policy that Child Development Services get first opportunity to use appropriate classroom space as it becomes available at elementary school sites. \$6 million was allocated for the Washington West/East and the Olympic sites.

As the programming and schematic design process is underway, it is crucial that the board direct staff to inform the architectural firms of this additional scope to their services as quickly as possible.

Due to state licensing requirements and the unique needs for both the Child Care and Special Ed programs, there are no "ready made" areas for these programs available in district facilities as they currently exist. There are waiting lists for both programs districtwide with the partially compliant facilities allocated to these programs currently at full capacity.

Special Ed

During the April 25, 2007, Board of Education meeting, a *Discussion Item D.03* concerning revised facility standards was presented to the board for review based upon a Needs Assessment from the Facility Master Planning process. A recommendation resulted from the planning process that an expanded suite of rooms be built to accommodate both the Special Ed and Child Care programs in the district. This template contained Occupational

Therapy (OT), Physical Therapy (PT), office, testing and classroom spaces at the elementary level, with an expanded program at the secondary school level.

The preliminary draft Facilities Master Plan went further to discuss that, ideally, the specialized suite of teaching and support spaces should be located at one of the elementary schools in Malibu and at two sites in Santa Monica, preferably one north side and one south side location. The sites were not identified in the FMP.

Programmatically, the site most suited for this purpose would be McKinley Elementary School in the Santa Monica area due to its central location and Cabrillo Elementary School in Malibu. No south side school has yet been identified. McKinley and Cabrillo Elementary Schools have scope in the Measure "BB" program that could be expanded or revised to contain this suite of rooms. No dollars have been allocated in the Measure "BB" scope to design these rooms during programming and schematic design.

Pine Street Child Care

The Pine Street Child Care program consists of four (4) rooms. The strategy for these rooms would be to move two of the rooms to the Washington West facility after renovation of the current office spaces, and move the remaining two classrooms to the Roosevelt Elementary site after two identified Pre-school rooms are built. This would fit into the Facility Master Plan and district policy regarding Pre-school at every elementary school. At this time, no Pre-school rooms exist at the site.

Funding Options:

As no funding has been allocated to relocate the Special Ed and Pine Street Child Care programs from the Olympic site, an additional budget allocation needs to be approved for planning to begin. Determining how many locations would be included in the Measure "BB" scope would refine the level of funding required. Currently there are three (3) Special Ed classrooms, four (4) Pre-schools rooms, an OT/PT room, and office space.

There are several options:

- Use dollars from the Olympic/Washington West/East allocation
- Use dollars from the unallocated Measure BB program

SITE DEVELOPMENT

It is recommended that staff proceed with contract negotiations with Harley Ellis Devereaux (HED) for the following scopes of work at Washington East/West and Olympic Continuation High School:

Washington East

1. Reconfigure two classrooms along 4th Street into office space for CDS (St. Joseph Early Learning Center rental area)
2. Incorporate existing 4th Street entrance to offices
3. Phone system (linking East and West sites) (technology budget)

Washington West

1. Reconfigure rooms 3 and 4 into preschool classrooms
2. Phone system (linking East and West sites) (technology budget)

\$500,000 (for both Washington East and West)

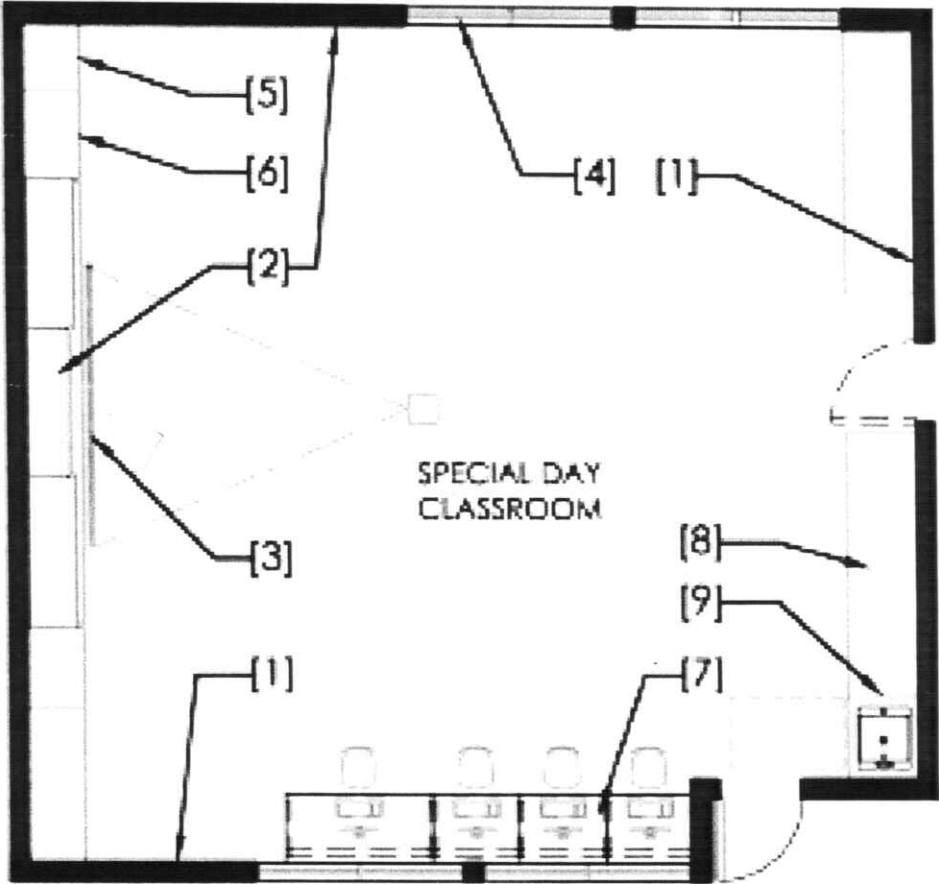
Olympic High School

1. Reconfigure kitchen area into new Art/Photo Lab with kiln
2. Reconfigure existing Room 4 into new library
3. Demolish 6 unused relocatables
4. Provide mobile science lab (District provided specification)
5. Reconfigure existing Room 11 into Career Tech opportunities with outdoor work area
6. Provide perimeter security, including visual barrier along Lincoln (fencing, landscaping)
7. Install new security systems campus-wide, including:
 - a. Public address, clocks, bell system (Simplex, per District standard)
 - b. Phone system (technology budget)
 - c. Visual silent alarm system - coordinate with City police
 - d. Automatic lockdown at doors- coordinate with City police
 - e. Security cameras in hallways
8. Reconfigure Room 7 into IEP meeting room
9. Reconfigure Room 8 into main administrative office
10. Reconfigure Rooms 13 and 14 into general Classrooms
11. Provide ISP break-out room
12. Provide outdoor eating area with food service area
13. Classroom technology - smart boards or document cameras/smart tablets
14. Upgrade fire and life safety, fire alarms as required
15. Upgrade technology infrastructure campus-wide

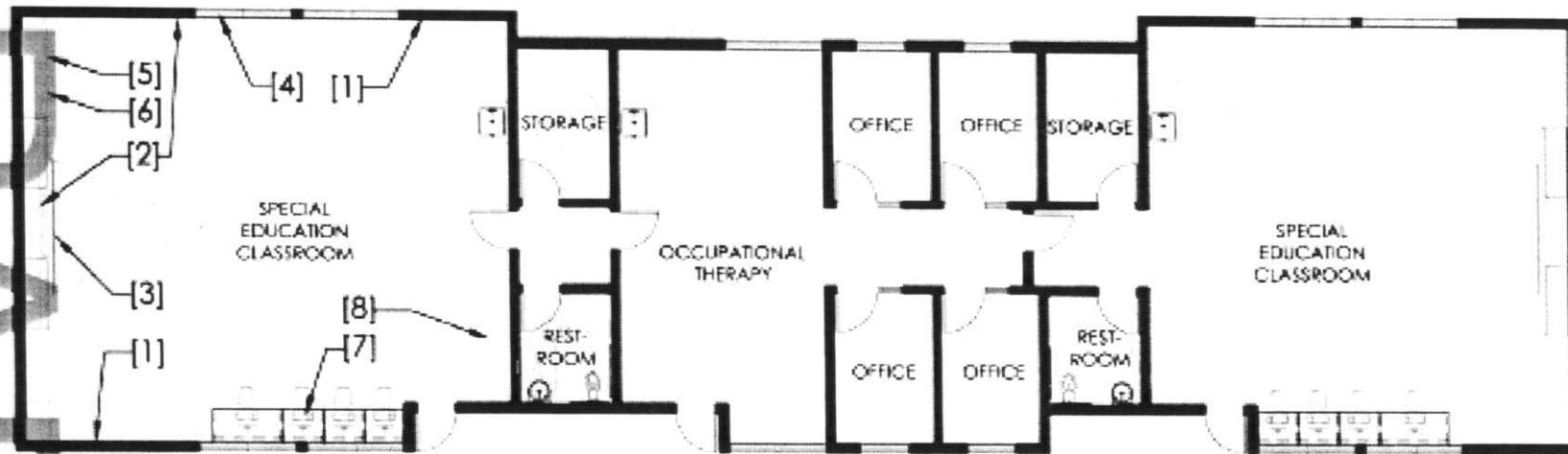
\$2 million

MOTION MADE BY:
SECONDED BY:
STUDENT ADVISORY VOTE:
AYES:
NOES:

Draft Design Guideline Template

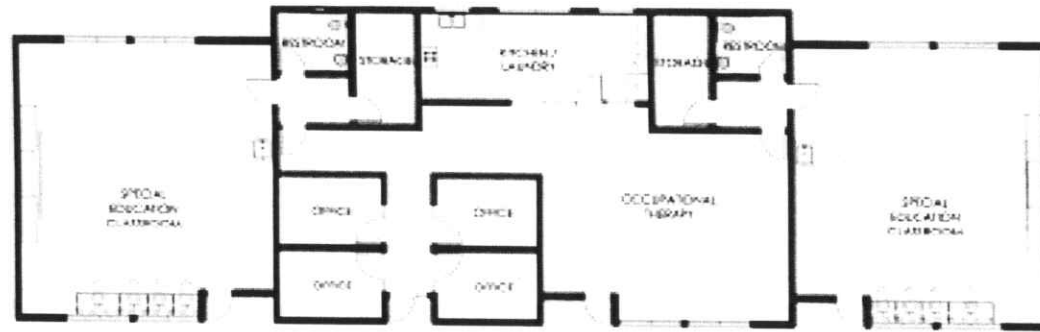


FOR INTERNAL REVIEW ONLY



FLOOR PLAN | EXAMPLE

SECTION 4 | SPECIAL DAY CLASSROOM - IS/TRANSITION SUITES | SPACE REQUIREMENTS



FLOOR PLAN | EXAMPLES

DRAFT
 - FOR INTERNAL REVIEW ONLY -

TO: BOARD OF EDUCATION

ACTION/MAJOR

03/13/08

FROM: DIANNE TALARICO / CHIUNG-SALLY CHOU / MAUREEN BRADFORD

RE: APPROVAL OF DISTRICT TECHNOLOGY USE PLAN

RECOMMENDATION NO. A.29

It is recommended that the Board of Education approve the district's Technology Use Plan for 2008-2011.

The Technology Use Plan (TUP) is the guiding document for technology initiatives, programs, and policies in the Santa Monica-Malibu Unified School District. The current plan expires at the end of the school year 2007-2008. This new plan is designated for the school year beginning 2008-09 through the school year ending 2011.

The development of the plan is the result of a collaborative effort from members of the Technology and Curriculum Integration Committee. This group represents district stakeholders, including teachers, classified staff, administrators, and parents, as well as representatives from the City of Santa Monica and the Los Angeles County Office of Education.

The Santa Monica-Malibu Technology Use Plan is designed to conform to the guidelines put forth from the state of California's Education Technology Planning Guide. Having a viable plan in place assures that the district will be eligible for competitive as well as formula grants for technology.

This 75-page document is available on the district website (www.smmusd.org/info_services/index.html). A hard copy is also available in the superintendent's office.

MOTION MADE BY:

SECONDED BY:

STUDENT ADVISORY VOTE:

AYES:

NOES:

DISCUSSION ITEMS

TO: BOARD OF EDUCATION

DISCUSSION

03/13/08

FROM: DIANNE TALARICO

RE: RESPONSE TO THE DISTRICT ADVISORY COMMITTEES' MID-YEAR
WRITTEN UPDATES

DISCUSSION ITEM NO. D.01

Mid-year reports were submitted by three of the existing District Advisory Committees, including Visual and Performing Arts, Health and Safety, and Child Development Services. The full text of each of these reports is attached. The purpose of this discussion item is to offer members of the Board of Education an opportunity to respond to each of these reports.

**District Advisory Committee
Board of Education Mid-Year Report
2007-2008
March 13, 2008**

DISTRICT ADVISORY COMMITTEE ON THE VISUAL AND PERFORMING ARTS
(FORMERLY THE FINE ARTS DAC)

Chair: Cindy Rosmann

Staff Liaison: Tom Whaley

Charge:

- Serve as a vehicle for parents, community, teachers, and students to communicate with the Board of Education on matters related to all students' equitable access to and successful participation in comprehensive, sequential, standards-based PreK-12 Arts Education. A comprehensive arts education program, with the arts taught as discrete disciplines, should be an integral part of the core curriculum offered to all students at all grade levels.
- Assess our current Visual and Performing Arts programs (Dance, Music, Theatre, and Visual Arts).
- Compare the District's curriculum, scheduling, staffing, instructional materials, equipment, and facilities with national and state standards and frameworks.
- Work with various agencies to explore funding to support the Visual and Performing Arts programs.

DAC Accomplishments to date this year:

1. The DAC has updated its Glossary of Arts Education Organizations and Events for use by students, parents and district staff. It's posted at <http://www.smmusd.org/vapa/pdf/DACVAPAGlossary07.pdf>
2. The new DAC brochure, designed to encourage membership from a broader segment of the arts education community, is posted at <http://www.smmusd.org/VAPA/DAC.html>.
3. The DAC has compiled a list of district music students participating this year in honor groups at the local, state, and national level.
4. DAC members and VAPA staff participated in the district wide Facilities Master Plan process. The DAC then sent a "VAPA Facilities Needs Survey" to all district VAPA teachers. The results were collated and given to the "Our School Plan" consultants in Spring 2006, and then to the Prop BB Oversight Committee in Fall 2007.
5. The DAC suggested an instrument donation program, which Tom Whaley developed into the "Play It Forward" program. (<http://www.smmusd.org/vapa/pdf/InstrumentDonation.pdf>)
6. The DAC has reviewed student access to Standards-based VAPA curriculum in 2007-08, and here is a summary:

- a. **DANCE - Current program:** All 4th graders receive two weeks of dance instruction during P.E. JAMS has one dance class this year. At Samohi, two dance classes are offered through the P.E. department, enhanced by once-a-week instruction by Robert Gilliam, through a SM/M Education Foundation-funded program, and that program has been extended to Malibu High and Olympic High. The UCLA ArtsBridge partnership program has moved to Olympic High. There are also two after-school SMC "dual enrollment" ethnic dance classes at Samohi. SmART Schools is offering professional development and sample lessons to classroom teachers in Title I schools to incorporate dance into the curriculum.
- b. **DANCE - Deficiencies:** No district wide program in PreK, K, 1, 2, 3, or 5. Few classes are offered at the middle and high schools. Appropriate dance facilities are available only at Grant, McKinley, and Samohi.
- c. **MUSIC - Current program:** General Music in grade 3; students in grades 4 and 5 can choose between Choir and Instrumental Music (strings and winds). Elective music classes at all middle and high schools. The SM/M Education Foundation, the Gail Dorin Foundation, and the Ella Fitzgerald Foundation fund the Dream Strings and Dream Winds programs at the four Title I schools and at two middle schools.
- d. **MUSIC - Deficiencies:** No district wide General/Vocal Music in PreK, kindergarten, or grade 1 and 2. Lack of dedicated appropriate facilities, especially at the elementary schools. Some class sizes are too large at the elementary level for the spaces available. Insufficient funding for transportation for secondary performing groups -- the Santa Monica Band Parents Association phoned, emailed, and wrote a letter (9/6/06) to then-CFO Winston Braham regarding this issue, but received no reply. For the Viking Marching Band and Color Guard this year, students and their parents had to raise nearly \$40,000 for transportation and over \$57,000 for additional instruction (Color Guard and percussion). SCSBOA provides adjudication at the regional events these groups travel to, which are assessment tools for the program. It functions in a similar way to CIF, with regard to sports teams.
- e. **THEATRE - Current program:** Drama classes are being offered at John Adams Middle School, Malibu Middle and High Schools, and Samohi. At the elementary level, the Morgan-Wixson Theater is continuing a partnership begun last year to provide opportunities for elementary students to both attend theatre performances and improve their literacy skills. The Santa Monica Playhouse has received a grant from the City of Santa Monica to support its Schools' Theater Field Trip program for the Spring

- and Fall of 2008. One thousand SMMUSD students will participate in interactive professional musical productions, pre-show theatre arts preparation, post-show talk-backs and language arts workshops, and hands-on behind-the-scenes lighting, costuming, and make-up experiences.
- f. **THEATRE - Deficiencies:** No district wide elementary drama program in PreK through 5. "For credit" drama classes have not been offered at Lincoln Middle School since June 2005; only an after-school non-credit program remains.
 - g. **VISUAL ARTS - Current program:** A wide range of art classes are offered at the three high schools, with fewer offerings at the middle schools. P.S. Arts (a private foundation) is providing K-5 art instruction at McKinley and Muir this year. Parents are funding K-5 year-long art instruction at Cabrillo, Pt. Dume, and Webster.
 - h. **VISUAL ARTS - Deficiencies:** No district wide elementary visual arts program in PreK through 5 (eliminated in 1978). In contrast, the Beverly Hills USD provides art to all K-8 students by a credentialed art teacher. Dedicated facilities are needed for art instruction at the elementary level. Fewer sections are being offered at the middle and high schools compared to past years. JAMS has dropped from 1.6 art FTEs to 1.0 art FTE. Lincoln has suffered a similar drop in art instructors, and no longer offers semester-long classes, such as Advanced Art, only Exploratory. Samohi also lost an art instructor and an art classroom two years ago. The Roberts Art Gallery manager needs a stipend to support the teacher in organizing, setting up, publicizing, and taking down exhibits. (<http://www.samohi.smmusd.org/roberts/>)

Highlight(s) to date of particular note:

1. **Partial reinstatement of district wide Elementary Music instruction** by credentialed teachers (General Music in grade 3, choir, winds and strings for ALL students in grades 4 and 5) with ongoing funding from the state Arts Initiative. More than 2,300 students are participating. The SM/M Education Foundation is funding recorders for all 3rd graders so they no longer have to purchase their own instruments.
2. **Title I schools** - Instrumental music students receive additional instruction through the Dream Strings and Dream Winds programs. With the reinstatement of Elementary General Music/Choral Music instruction, the reinstatement of the district wide Elementary Honor Choir, and the introduction of the Elementary Honor Band and Orchestra, more Title I students will be able to participate in the "Stairway of the Stars" concerts this year.
3. **Purchase of instructional materials, equipment, and supplies** continues for all 4 arts disciplines (Dance, Music, Theatre, and Visual Arts), including the reinstated Elementary

- General Music and Choral Music programs, with one-time funding from the state Arts Initiative.
4. **High quality instruction** - Joni Swenson was a finalist for the Los Angeles Music Center Bravo Awards this year, and Samohi is a finalist in the GRAMMY Signature Schools Awards for outstanding high school music education programs. On May 20 at Barnum Hall, SMMUSD will host a conference entitled "Open the Doors to Arts Education," sponsored by the California County Superintendents Educational Services Association (CCSESA) Statewide Arts Initiative and 11 County Arts Lead, and the Los Angeles County Office of Education.
 5. **Music** - In addition to winter and spring concerts at all school sites, student groups will be performing at the "Stairway of the Stars" concerts on March 6 and 7, and at the upcoming "2008 Celebration For The Arts" at Santa Monica Pier in April. Over spring break, the Samohi Symphony will travel to Salzburg, Vienna, and Prague to perform, attend world class clinics, and participate in the Dvorak Festival. Fifty SMMUSD students participated in GRAMMY Career Day at USC again this year. The Samohi Viking Marching Band has been invited to perform in London on New Year's Day 2009.
 6. **Theatre** - Malibu Middle, Malibu High, and Samohi have all presented plays this year, including "Willie Wonka," "Little Women," and "Bye Bye Birdie."
 7. **Dance** - A dance class was introduced at JAMS this year, with students performing at two well-received school wide assemblies on February 15. The Robert Gilliam dance program, funded at Samohi by the SM/M Education Foundation, was expanded to Malibu High and Olympic High this year.
 8. **Art exhibits** - District students will again have an opportunity to participate in the Santa Monica Museum of Art's "Wall Works" program. 250 students from Franklin, Grant, McKinley, Muir, Rogers, Roosevelt, and Lincoln Middle Schools will be collaborating with a the BLIK wall graphics company (www.whatisblik.com), and the exhibition will open at Bergamot Station on March 12th. Artwork by students from JAMS, Lincoln, Malibu, Olympic, and Samohi will be displayed at the "2008 Celebration For The Arts" at Santa Monica Pier in April. The Roberts Art Gallery at Samohi has been included in the "Pico Art Walk" for the past two years. The Roberts schedule and artwork from past exhibits can be seen online at <http://www.samohi.smmusd.org/roberts/exhibits.html>
 9. **Barnum Hall** - The Barnum Hall Theatre Manager, Carey Upton, has been named Director of Theater Operations and Facility Permits, thanks to the efforts of Jean Sedillos, Michael Hill, and the SPACE Committee. The school district is profiting from a new revenue stream, due to the work of Carey Upton.
 10. **SmART Schools** - The U.S. Department of Education awarded SMMUSD a 4-year SmART Schools grant. The goal is integrating the arts throughout the curriculum in the four Title I

- schools. This is the second year of the grant, and classroom teachers from the four Title 1 schools participated in a successful "Summer Institute" training week with artists in August, 2007. Artists are working with classroom teachers this year (2007-08). A recent mini-institute brought more classroom teachers into the program, and additional professional development will be offered on March 6 and 7, on May 29 and 30, and at a summer institute in August.
11. **Honors** - Two Samohi visual arts students were honored last year in the L.A. County Music Center Spotlight Awards. A large number of district music students have been selected again this year for local, statewide, and national honor choirs, string orchestras, orchestras, and bands by the Southern California School Band and Orchestra Association, the Southern California Vocal Association, the California Orchestra Directors Association, the California Band Directors Association, the California Association for Music Education, the American Choral Directors Association, and the American String Teachers Association/National School Orchestra Association. In addition, the Samohi Jazz Band placed first last year in the advanced division at the Western States Jazz Festival.
 12. **Expanding class offerings** - Dr. Pedroza and Tom Whaley have been working closely with Dr. Susan Jain at UCLA and with Santa Monica College to identify instructors and develop course outlines in order to start a Gospel choir and a Mariachi ensemble at Samohi in Fall 2008.
 13. **Facilities** - A working HVAC system (with the emphasis on the air conditioning!) was finally installed in the Samohi music building this year.
 14. **Fundraising** - The "For The Arts" Art Auction raised \$75,000 this year. Another "For The Arts" benefit concert with Jackson Browne and Venice is scheduled for May 31st at Barnum Hall.
 15. **Equipment** - The new "Play It Forward" program encourages families to donate no longer used musical instruments to the school district. See details at:
www.smmusd.org/vapa/pdf/InstrumentDonation.pdf
 16. **Integrating the arts into the curriculum** - The SM/M Education Foundation funded a pilot program this year at Grant Elementary called "Rock the Classroom." It brought professional musicians into the classroom to teach "Literacy through Music," using music and songwriting to complement the literacy curriculum.

Suggested direction for 2008-09:

1. CURRICULUM, STAFFING, and SCHEDULING
 - a. **Visual Arts** - Per the "Arts for All" 9-year strategic plan, adopted by the Board of Education, implement a district-wide Elementary Visual Arts program with credentialed art teachers, patterned after the Beverly

Hills Unified School District model, starting with the fourth and fifth grades.

- b. **Dance** - Maintain standards-based district wide Dance instruction for 4th grade, and add 5th grade.
- c. **Dance** - Provide a Dance class at all 3 middle schools (JAMS has a new dance class this year), or at least a two-week standards-based Dance unit for each grade level as part of the P.E. curriculum. Share district staff, provide professional development, and/or use artists-in-residence to work with credentialed teachers.
- d. **Dance** - Offer a comprehensive Dance program at all 3 high schools (ballet, modern, ethnic).
- e. **Theatre** - Reinstate the Lincoln Middle School Drama program using a 3-tiered approach: integrate drama instruction into 6th grade Humanities/Social Studies class; offer standards-based year-long "for credit" drama classes as electives; and provide after-school programs for play/musical production.
- f. **Visual Arts** - Ensure appropriate class offerings at JAMS and Lincoln for all levels of experience.
- g. **VAPA class offerings at Samohi** - Schedule **more A-period classes** at Samohi for 9th and 10th graders so they can take both a music class and a foreign language class. A-period also needs to include non-honors sections of academic classes so that athletes who are not enrolled in the honors program can participate in arts classes during the regular school day.
- h. **Music** - Provide transportation funding for the Samohi Viking Marching Band and Color Guard, which represent their high school, the school district and the City of Santa Monica at so many events each year. The parents have to raise tens of thousands of dollars each year to pay for transportation and instruction in order for all students to participate, and the Band cannot compete in tournaments without a Color Guard.

2. FACILITIES

- a. Appropriate facilities for **Dance, Music, Theatre,** and **Visual Arts** instruction are needed at all elementary schools. "**Dedicated**" **arts classrooms** are part of the "Arts for All" strategic plan and should be included in the Prop BB construction program.
- b. The practice rooms in the **Malibu High music building** also need adequate ventilation so students are not bathed in perspiration. According to national **Opportunity-to-Learn Standards for Arts Education**, p.25, "Lighting and ventilation systems are designed so that rehearsal rooms have a Noise Criterion (NC) level not to exceed NC25. Rehearsal rooms, practice rooms, and instrument storage rooms maintain a year-round temperature range between 68 and 72 degrees, with humidity between 40% and 50%, and air exchange rates double that of regular classrooms."

- c. **Visual Arts** facilities need improvements at all middle and high schools. At **Malibu High**, there is no ventilation in the **kiln room**, which is a health and safety issue. Many art classrooms need more sinks and additional storage, including storage for three dimensional artworks and secured storage for hazardous materials.
- d. **Instrument lockers** are needed for the Samohi orchestra room to store both school-owned and privately owned musical instruments. During the Prop X program, the Wenger Corporation designed a storage system specifically for the new building and for the schools' instrument inventory. Secured storage for instruments is an essential part of national and district music standards. Secured storage is especially important since this room, along with Barnum Hall, is rented to outside groups.
- e. **Theatre** facilities need improvements at all middle and high schools. When the organ pipes are re-installed in Barnum Hall, the room where they are currently being stored, along with other materials, should revert to Barnum Hall use for additional office space.
- f. **Dance** facilities improvements are needed at 13 of 16 school sites. Of the middle and high schools, only Samohi has a dance studio. Of the elementary schools, only the Grant and McKinley auditoriums have flooring which is appropriate for dance instruction.

Budgetary Implications for 2008-09:

1. CURRIRULUM/STAFFING/SCHEDULING/TRANSPORTATION

- a. 3.0 FTE for an Elementary Visual Arts program: \$210,000
- b. Add 5th grade to the current Elementary Dance program: \$17,000
- c. 1.0 FTE to provide Dance instruction at all 3 middle schools: \$70,000
- d. 1.2 FTE to begin building a comprehensive Dance program at all 3 high schools: \$84,000
- e. 0.2 FTE to reinstate a "for credit" Drama class at Lincoln: \$14,000
- f. 0.4 FTE to increase Visual Arts class offerings at JAMS and Lincoln: \$28,000
- g. Scheduling more A-period classes at Samohi: Cost TBD
- h. Provide transportation funding for the Samohi Viking Marching Band and Color Guard: \$40,000

2. FACILITIES

- a. Bring district Visual and Performing Arts facilities up to district and national standards with funds from Prop BB: Cost TBD
- b. Purchase the Wenger instrument storage system that was designed for the Samohi orchestra room: \$30-40,000

**District Advisory Committee
Board of Education Mid-Year Report
2007-2008**

HEALTH & SAFETY DISTRICT ADVISORY COMMITTEE

Chair: Pat Nolan

Staff Liaison: Marolyn Freedman

Charge:

- Assist, inform, and support the Board on issues related to student health, wellness and safety.
- Monitor contemporary issues in health and safety that have a direct impact on school age children.
- Encourage developmentally appropriate health and physical education in all schools.
- Identify community resources to enhance health and safety in schools.
- Identify community resources to provide supplemental mental health supports for children and families.
- Review the literature and best practices associated with healthy eating, delivery of student meals and student consumption of meals aimed at the reduction of childhood obesity and establishing healthy life-long eating habits to support its work.

Accomplishments to date this year:

1. Attended School Wellness Policy Conference sponsored by California School Board Association.
2. Informed Principals of Wellness Policy guidelines.
3. Met with parent groups to discuss policy.
4. Provided information for teachers and parents on Wellness Policy guidelines and foods that can be served on campus.
5. Provided teachers and parents suggestions for classroom parties that would meet Wellness Policy Guidelines compliance.
6. Conducted Pre and Post Surveys at schools to assess level of compliance with Wellness Policy.
7. Received reports from Food and Nutrition Services about school lunch and vending compliance with Wellness Policy.
8. Reviewed and discussed resources related to student health:
 - Possible responses to outbreaks of influenza
 - Communication pathways among SMMUSD HQ/school nurses/DAC
9. We are re-welcoming a representative of the American Cancer Society to the DAC
 - Update on new State PE requirements for HS graduation
 - We are actively seeking DAC members (community and/or SMMUSD staff) with interest and/or expertise in PE
10. We have reviewed and discussed resources related to student safety:

- Presentations/discussions on the Emergency Response (911) system, Emergency Preparedness on SMMUSD campuses (yearly earthquake drills), community (city/county) emergency response networks/training (DART, SMOAID, "I've Got 7" program now piloted in SMMUSD McKinley ES and to be expanded) tsunami drills), RISK program.
- Updates on Measure "BB" resources available for bathroom renovation, etc; discussion of deferred maintenance budget
- DAC receives updates from SMPD and SMFD, and has member of SMFD on its roster.

Highlight(s) to date of particular note:

Santa Monica-Malibu Unified School District will be celebrating the 10th Anniversary of its world-famous Farmers' Market Salad Bar. The celebration will be held on May 8th from 4 to 6pm at McKinley Elementary School. Daily, over 1,000 salads are consumed by students in our schools who choose this health eating option.

Suggested direction for 2008-09:

Continue to monitor Wellness Policy compliance.

Budgetary Implications: None at this time.

**District Advisory Committee
Board of Education Annual Report
2007-2008**

Child Development Services DAC

Chair: Gleam Davis

Staff Liaison: Judy Abdo

Charge:

• **Input on State Preschool Standards**

The California Department of Education is using a collaborative approach to creating standards for preschool programs. CDS DAC members have been involved in creating standards, in responding to the draft standards, and in communicating with statewide early childhood leaders about recommendations for changing the draft standards. CDS staff will continue to monitor progress on the draft standards and will participate in the process to amend the current draft standards.

• **Improve kindergarten transition**

CDS staff will work with members of the Santa Monica Child Care and Development Task Force as well as district staff and parents to enhance the transition from preschool to kindergarten.

• **Increase inclusion**

CDS staff looks forward to working with the new Special Education Preschool Coordinator as we continue the five inclusion classrooms already operating as collaboratives involving both CDS and Special Education instructional staff. Depending on the need, there may be an opportunity to add more inclusion classrooms during the school year. Staff will work to enhance after school inclusion.

• **Assist Infant Family Support Program**

With reduced funding for the Infant Family Support Program, CDS staff and City of Santa Monica staff will work together to redesign parenting programs for families with children 0-5. Additional funding options will be explored.

Accomplishments to date this year:

• **Preschool Standards (now called Foundations)**

Staff attended informational and feedback meetings, and wrote a letter to the State requesting changes to create foundations that reflect consistency and respect for individual developmental progress.

• **Improve Kindergarten transition**

Two DAC meetings have focused on kindergarten transition issues. DAC members suggest kindergarten information should

go to preschool parents earlier in the school year, a summer program for children who will be in kindergarten in the fall, clear information distributed to parents about expectations of kindergarten teachers. The Preschool Program is currently creating informational pamphlets about transition to give to parents, which includes dates for the district Kindergarten Round-up times, and transition is a key part of the Head Start program's written plan.

- Increase inclusion programs
Improved communication between the CDS Preschool managers and the Special Ed Preschool Coordinator has resulted in children's needs addressed earlier and more consistently. The inclusion class at Lincoln Preschool is operating smoothly this year.
- Assist Infant Family Support Program
With the assistance of DAC members, CDS staff, and the City of Santa Monica, new programs are being developed at Virginia Avenue Park for parents of very young children. SMC, St Johns, and Venice Family Service are offering parenting classes or groups at Virginia Avenue Park. The Bilingual Community Liaisons who worked for IFSP are now on the Head Start staff and are working with families of young children, including families they'd worked with previously at Virginia Avenue Park.

DAC members and CDS staff have met several times with City of Santa Monica staff, agency directors, Childcare Task Force members, and other Lifelong Learning advocates to work on coordination of existing programs for 0 - 3 yrs and to identify gaps in community services for families with very young children. RAND has taken a leadership role in bringing stakeholders together to reinvigorate the earlier investment in families with young children. Representatives of the DAC and Childcare Task Force testified at the City of Santa Monica budget priority meetings and advocated for increased attention to 0 - 3 programs.

Highlight(s) to date of particular note:

CDS began operating the full day preschool childcare program at John Adams Preschool and Washington West in July 2007. The Adams Preschool was renovated and refurnished with equipment and materials for children aged 2 - 5. The center has been fully enrolled since September.

DAC members and CDS staff attended the West Coast Economic Forum on Early Childhood Investment at the Milken Foundation. Corporate and Foundation leaders are working together to focus on 0-5 to ensure an educated workforce in the future.

CDS received a commitment of \$50,000 from STEP (Steps to Excellence Project) to train classroom assistants in observation and assessment in preschool programs, as part of the overall program quality improvement plan. Participants were paid to attend the class and received SMC credit. STEP will be visiting each CDS preschool site to rate the programs. STEP was developed by the Policy Roundtable for Child Care.

Suggested direction for 2008-09:

- Continue work to increase the number of full time preschool children served.
- Implement a database enrollment system.
- Use the summer months to create special transition programs to prepare 4-year-olds for kindergarten.
- Work with Ed Services to provide opportunities for CDS and kindergarten teachers to interact and cross train.

Budgetary Implications:

The CDS enrollment database will be an additional cost within the CDS budget.

TO: BOARD OF EDUCATION

DISCUSSION

03/13/08

FROM: DIANNE TALARICO / CHIUNG-SALLY CHOU / MAUREEN BRADFORD

RE: UPDATE ON SMMUSD'S EFFORTS TO IMPROVE TEACHING AND
LEARNING IN MATHEMATICS

DISCUSSION ITEM NO. D.02

Last year, the Educational Services Department provided the Board of Education with a discussion item related to an analysis of mathematics achievement data. Educational Services team members suggested a framework for the district's on-going work to improve mathematics instruction. That discussion closed with some proposed next steps as well as some questions for reflection.

In this presentation, staff will:

- Revisit the work completed over the past year
- Briefly review achievement data
- Discuss current work in course alignment, student placement, and the need for differentiated instruction in mathematics

Finally, staff will present the three-year plan for professional development and for building instructional leadership around mathematics instruction.

TO: BOARD OF EDUCATION

DISCUSSION

03/13/08

FROM: DIANNE TALARICO / CHIUNG-SALLY CHOU

RE: MEMORANDUM OF UNDERSTANDING AMONG SANTA MONICA-MALIBU
UNIFIED SCHOOL DISTRICT (SMMUSD), SANTA MONICA-MALIBU
EDUCATION FOUNDATION (SMMEF), AND SANTA MONICA-MALIBU
CLASSROOM TEACHERS ASSOCIATION (SMMCTA)

DISCUSSION ITEM NO. D.03

It is recommended that the Board of Education approve the Memorandum of Understanding (MOU) among the Santa Monica-Malibu Unified School District (SMMUSD), the Santa Monica-Malibu Education Foundation (SMMEF), and the Santa Monica-Malibu Classroom Teachers Association (SMMCTA).

The MOU provides a collaborative effort for SMMEF to operate a fee-based and credit-earning High School Summer Program on the Santa Monica High School campus on a one-year pilot basis.

A copy of the MOU is available in the Superintendent's Office.

TO: BOARD OF EDUCATION

DISCUSSION

03/13/08

FROM: DIANNE TALARICO / TIMOTHY R. WALKER /
MICHAEL D. MATTHEWS

RE: STAFFING ALLOCATIONS AND REDUCTIONS FOR THE 2008-2009
SCHOOL YEAR

DISCUSSION ITEM NO. D.04

Reductions in staffing are planned for the 2008-2009 school year due to declining enrollment.

The reductions are based upon all secondary schools being staffed at a student-to-teacher ratio of 31:1, except for John Adams Middle School, which will be staffed at 30:1. John Adams was staffed at a 29:1 ratio in the 2007-08 school year.

In 2008-2009, grades K-3 will continue to be funded at 20:1. Grades 4-5 will be funded at 30:1, with the exception of Will Rogers Learning Community and Edison Language Academy, which are recommended to be staffed at 25:1 ratios. Rogers was staffed at 20:1 in grades 4 and 5 for the 2007-08 school year. Utilizing these staffing ratios and the enrollment projections provided by DecisionInsite, the Board of Education took action at the March 5, 2008, meeting to implement these reductions as they impact certificated staffing. The board will finalize these budgetary reductions when the budget is adopted in June, but it is important that decisions are made by April 3rd, to allow scheduling decisions regarding students to occur in a timely manner.

Staff continues to examine administrative and classified staffing ratios, and will be recommending reductions in those areas as well. In determining its recommendation, staff has considered many possible reductions, including reductions in central office administrators and staff; reducing Santa Monica High School by one "House"; and staffing school administrators and classified staff by a clear and consistently-applied ratio, which would result in a decrease of staff at some sites, while increasing staff at others.

After careful consideration, staff is not recommending the reduction of one "House" at SAMOHI for the 2008-09 school year. Although enrollment is projected to continue to decline there, staff is recommending that the district takes another year to more closely examine enrollment, and perhaps open this discussion again next year if enrollment indeed declines as expected.

The chart below reflects recommended reductions in the 08-09 budget. Again, these recommendations are primarily related to making prudent staffing decisions based on declining enrollment.

Item	Potential Savings
Reduced Teaching Positions at JAMS (30:1)	\$448,000
Reduced Teaching Positions at Malibu (31:1)	\$368,000
Reduced Teaching Positions at Samohi (31:1)	\$560,000
Reduced Teaching Positions at Elementary Schools	\$720,000
Reduction of Temporary Elementary Music Teacher	\$80,000
Reduction in Site Administrators	\$250,000
Reduction in Central Office Administration	\$160,000
Reduction in Classified Reductions at Sites	\$250,000
Reduction in Central Office Classified	\$260,000
Reduction in Contracts	\$150,000
Total	\$3,246,000
Reduction in current projection	\$760,000
Total Potential Savings	\$2,486,000

There are other reductions being examined that are funded through categorical programs. Reductions of these positions will not impact the district's general fund.

Staff will continue to examine possible reductions. At this time staff recommends that the Board consider the recommendations above, advise staff on possible increases or decreases, then take action on the reductions at the April 3, 2008, board meeting.

INFORMATION ITEMS

TO: BOARD OF EDUCATION INFORMATON
03/13/08

FROM: DIANNE TALARICO / CHIUNG-SALLY CHOU / PEGGY HARRIS /
TRISTEN MACON / ROSA SERRATORE

RE: MATHEMATICS TEXTBOOK ADOPTION

INFORMATION ITEM NO. I.01

Since November 2007, K-8 and high school mathematics teachers have met and deliberated over recommendations for adoption of new mathematics textbooks. The committee used a protocol developed by the State Department of Education and District Needs Assessment and data to review content and format of texts on the new state-adopted list. The committee piloted lessons and solicited and shared input from their colleagues, students, and site administrators.

The committee recommends the Pearson Scott Foresman series, enVision, for grades K-5 and the Holt California mathematics program for grades 6, 7, Algebra I, Geometry, and Algebra II.

Our alternative school, SMASH, has requested to use another state adopted program that meets state standards for K-6, Wright Group/McGraw-Hill California Everyday Mathematics. Holt California mathematics program is requested for grade 7 and for Algebra I.

These materials are on display for public viewing at all site libraries and at the District Office: 1651 16th Street, Santa Monica, CA 90405. The board will take action on the textbook adoption at its April 3, 2008, meeting.