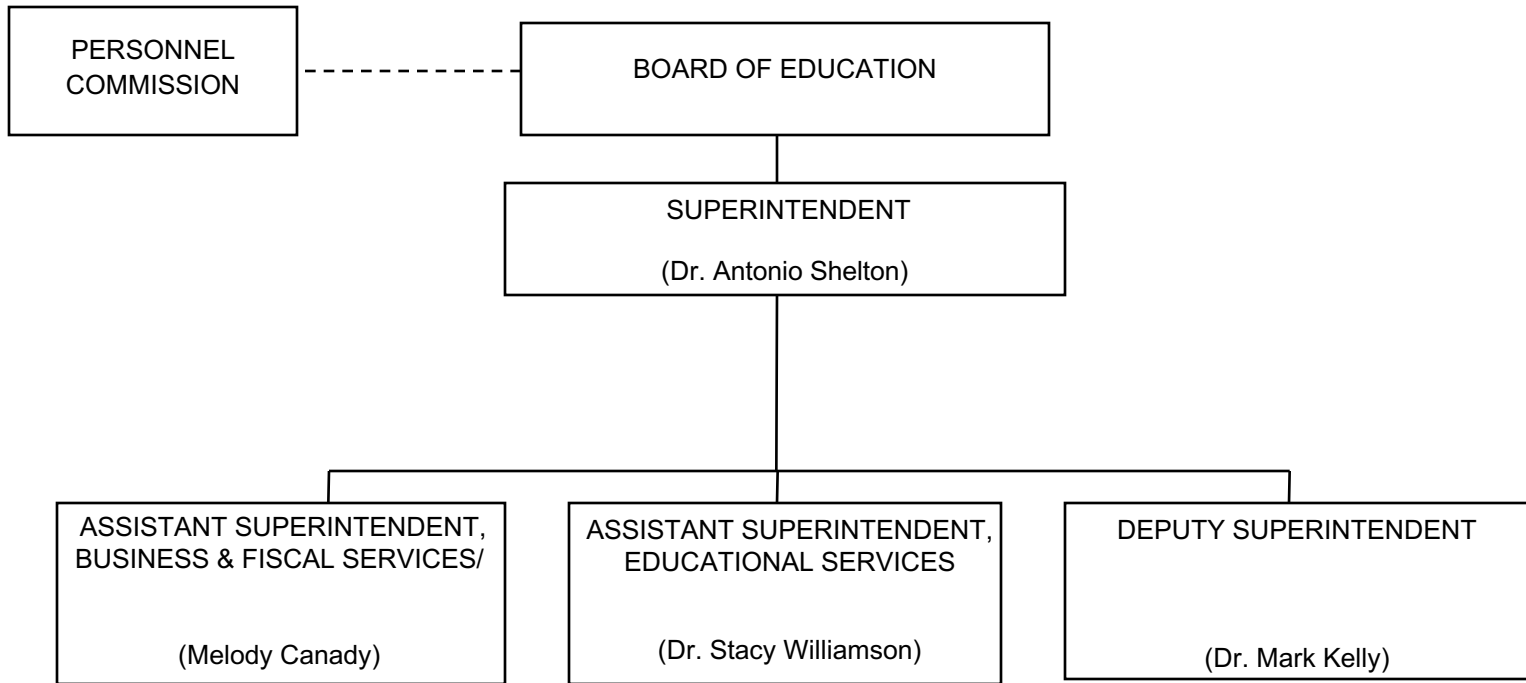


DISTRICT ORGANIZATION



BOARD OF EDUCATION

MEMBERS

Jennifer Smith, President
Jon Kean, Vice President
Maria Leon-Vazquez
Laurie Lieberman
Alicia Mignano
Stacy Rouse
Richard Tahvildaran-Jesswein

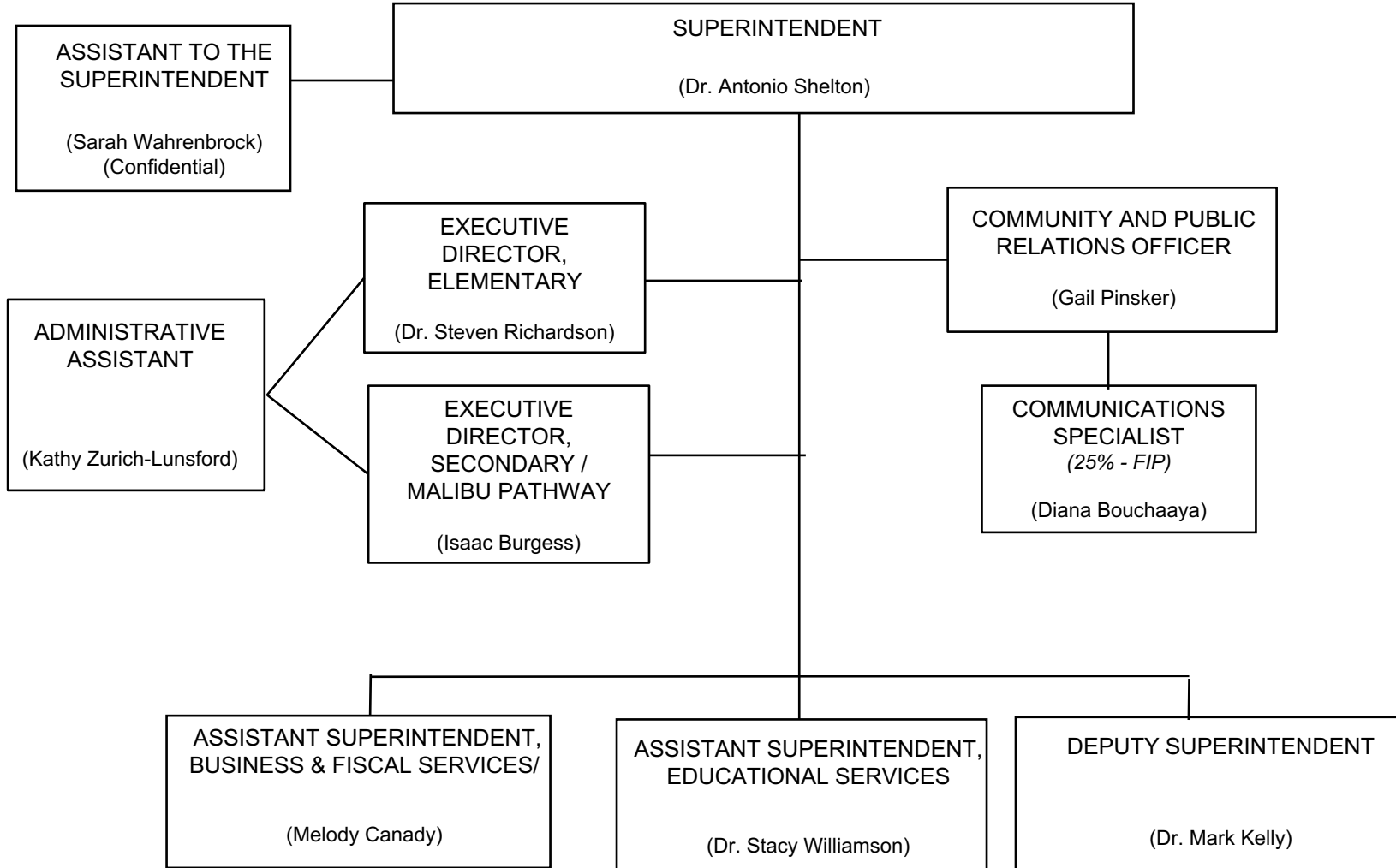
STUDENT MEMBERS

Haley Castanaza– Santa Monica HS
Ella Stabile– Malibu HS
tbd – Olympic HS

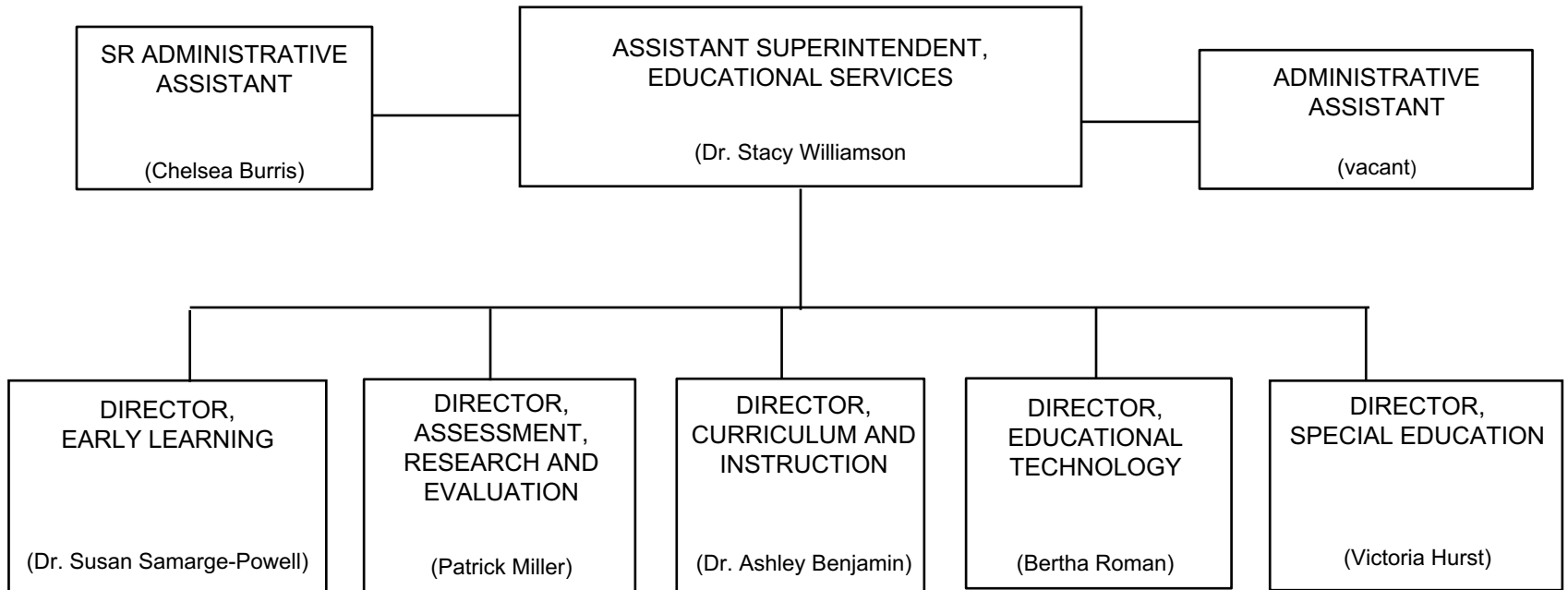
SUPERINTENDENT

(Dr. Antonio Shelton)

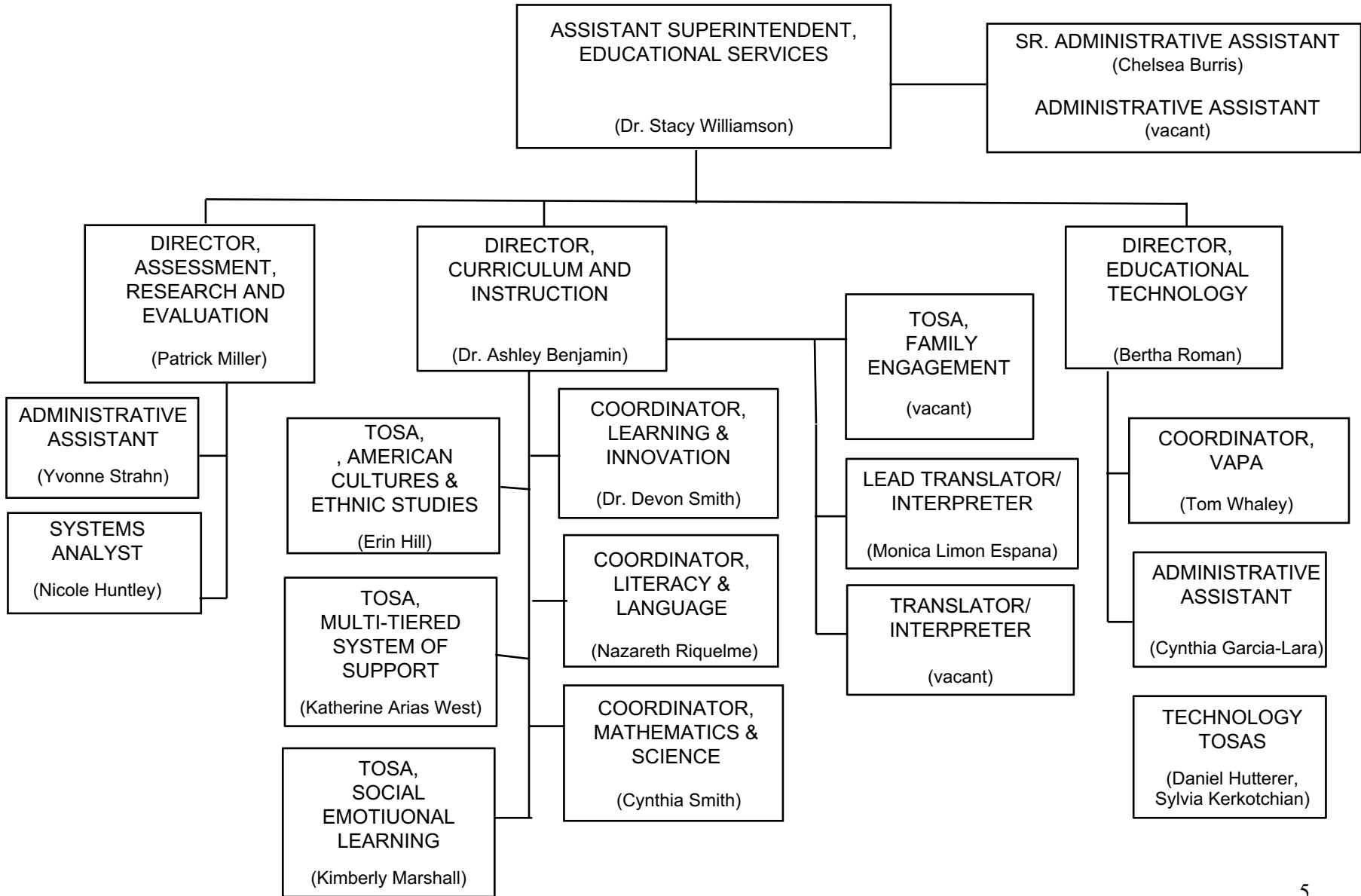
SUPERINTENDENT



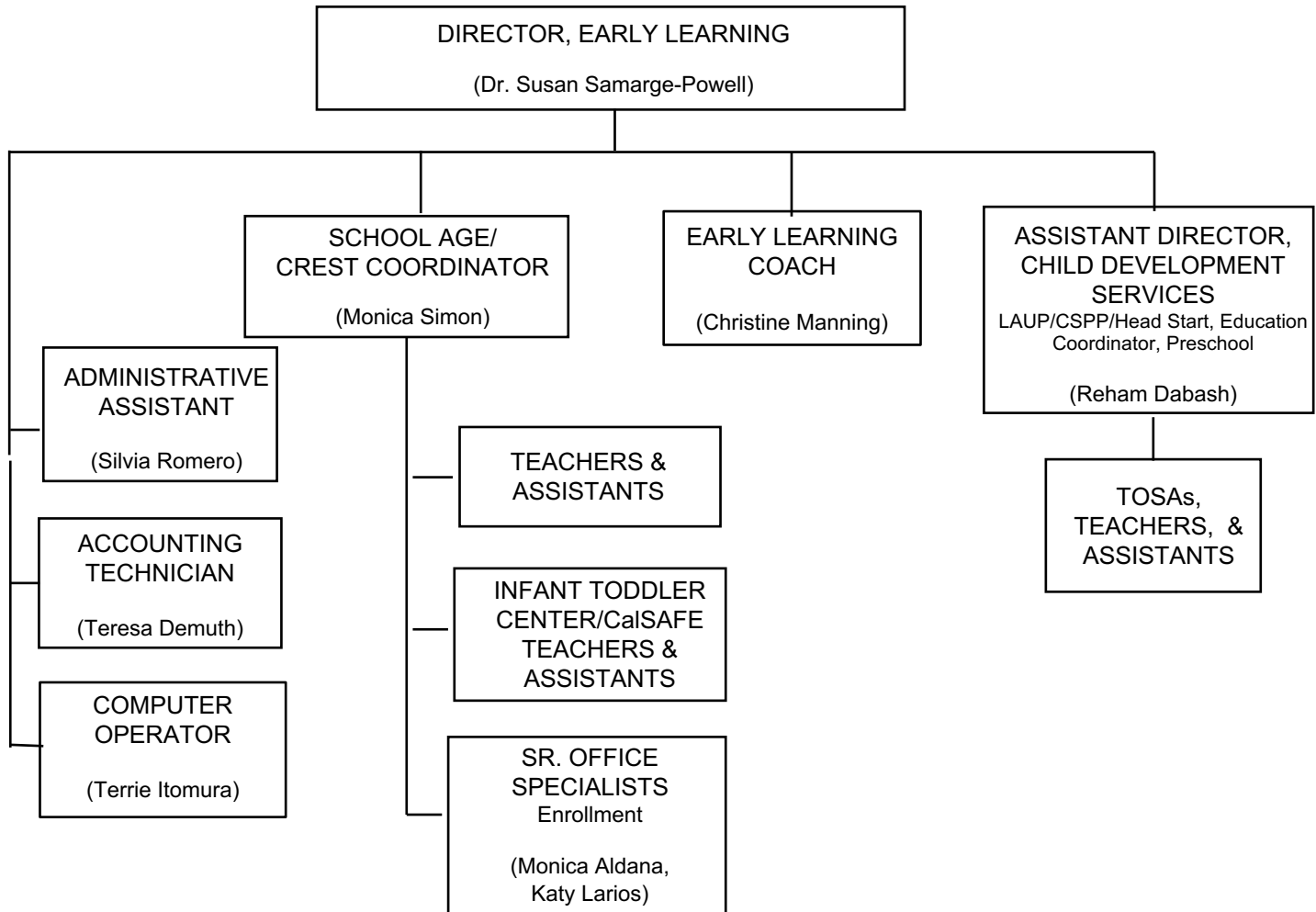
EDUCATIONAL SERVICES DEPARTMENT



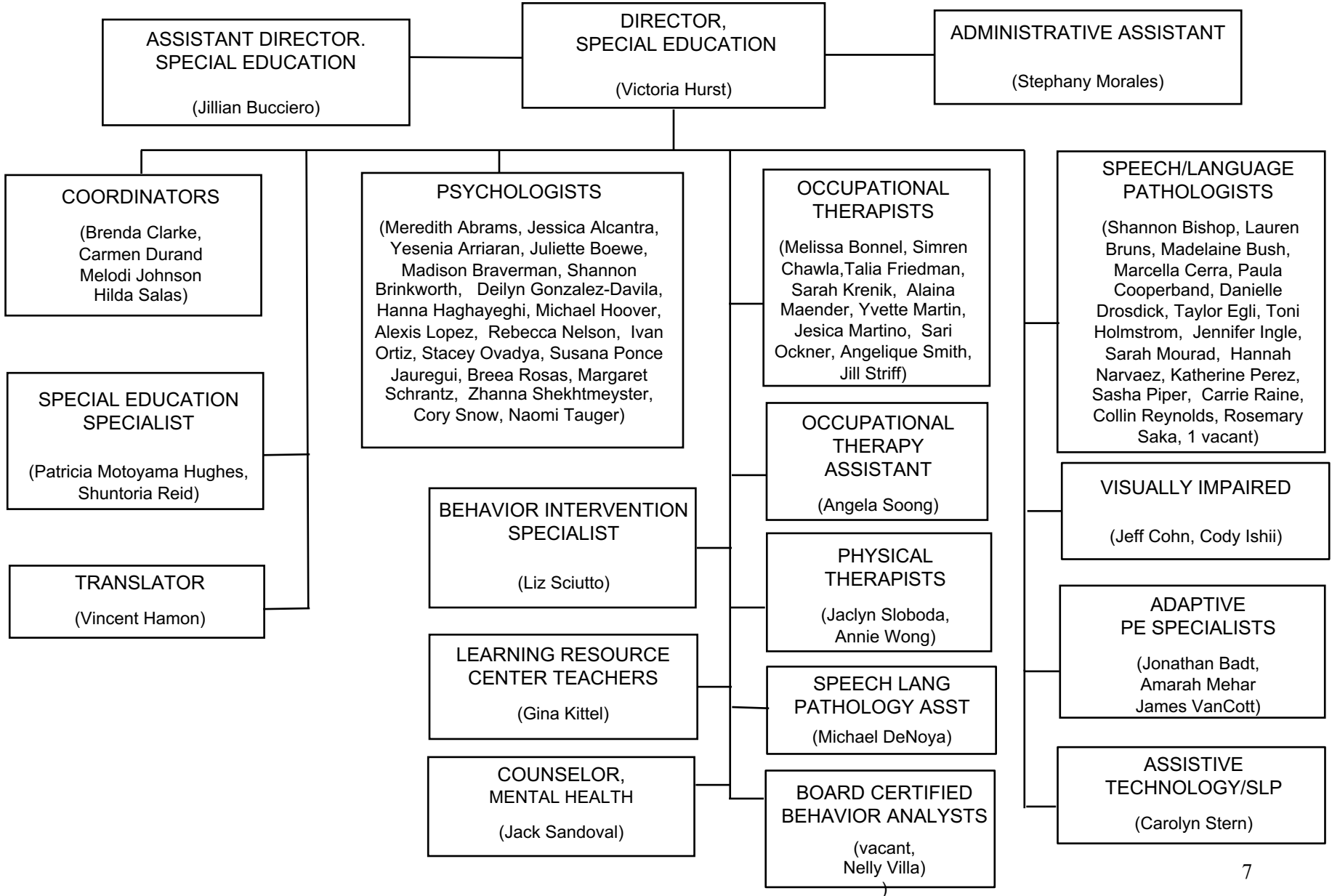
EDUCATIONAL SERVICES



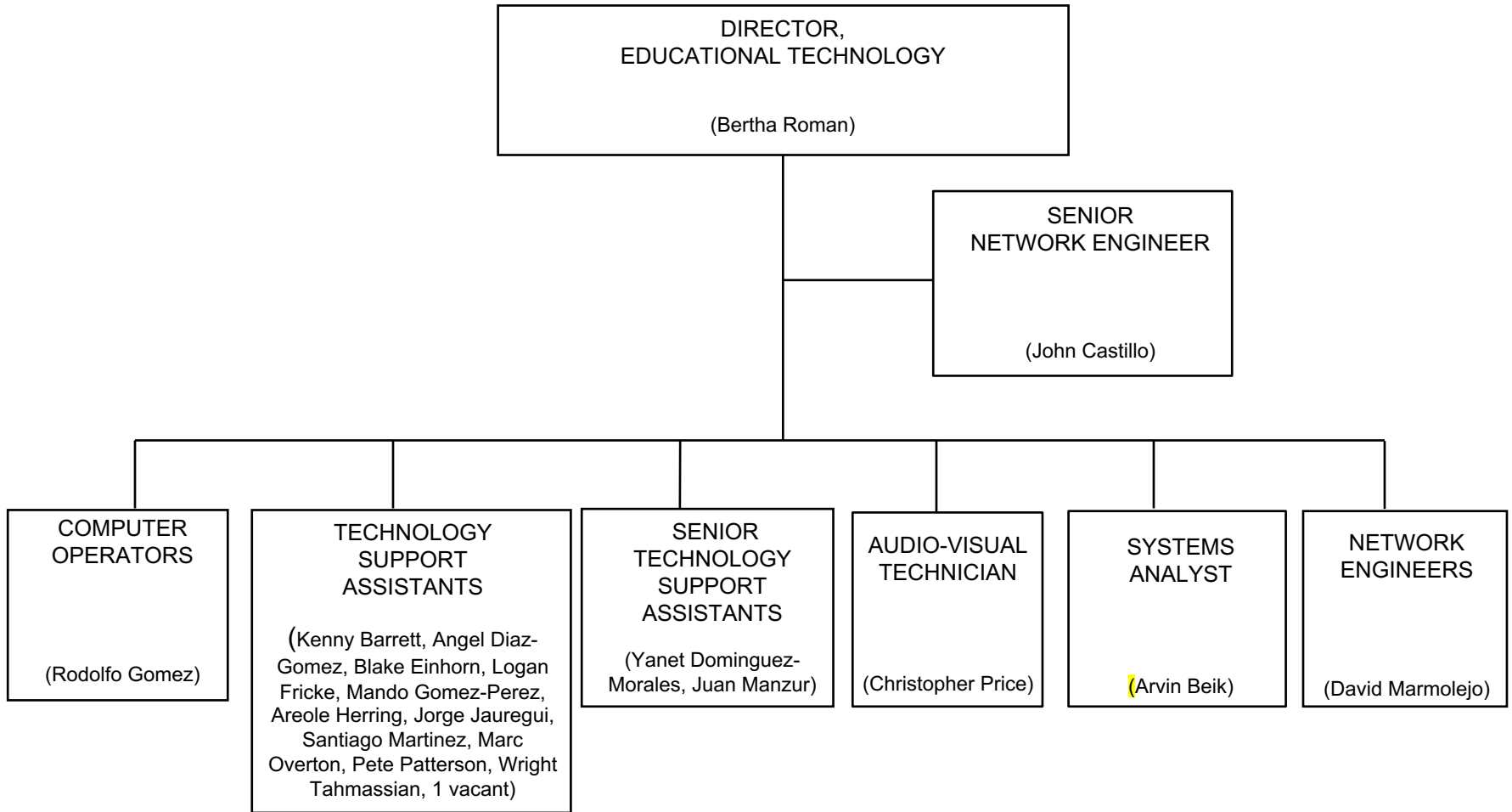
CHILD DEVELOPMENT SERVICES



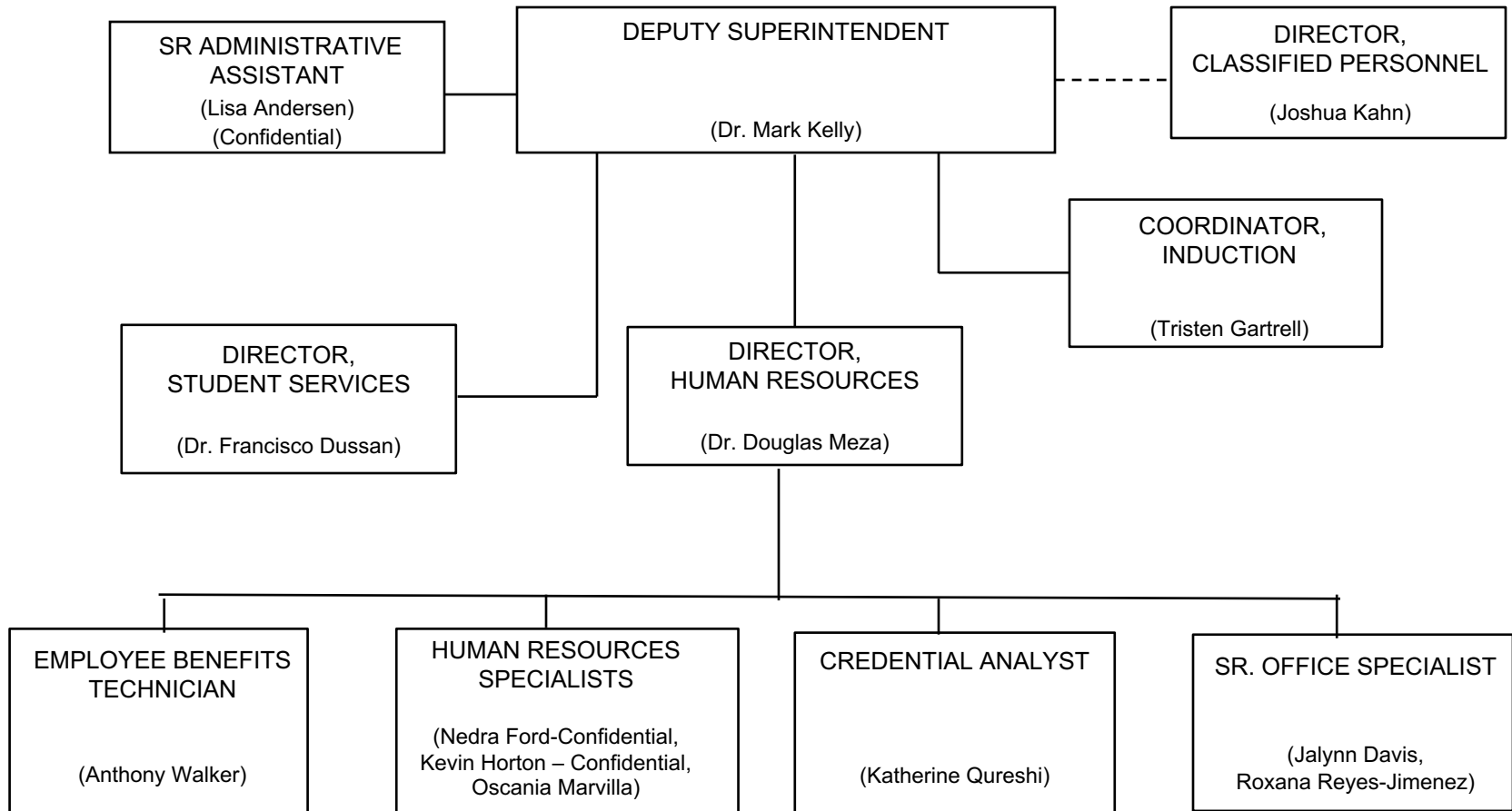
SPECIAL EDUCATION DEPARTMENT



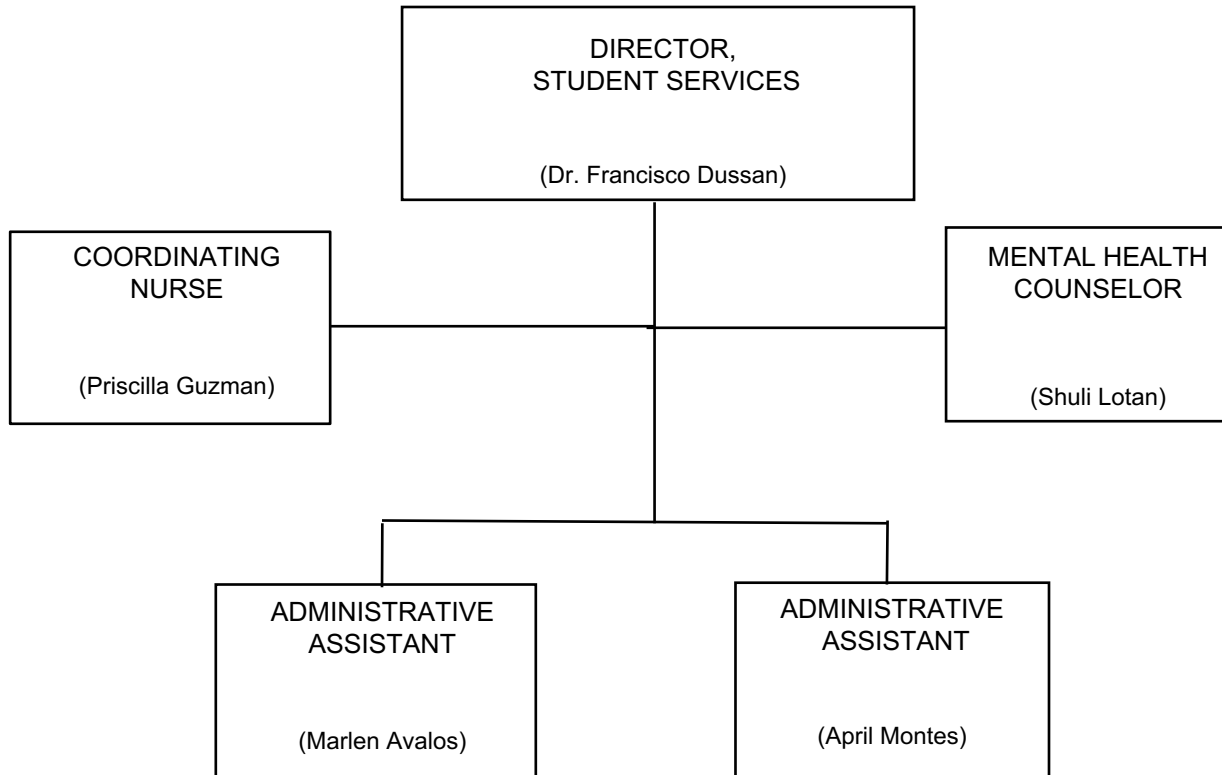
EDUCATIONAL TECHNOLOGY SERVICES



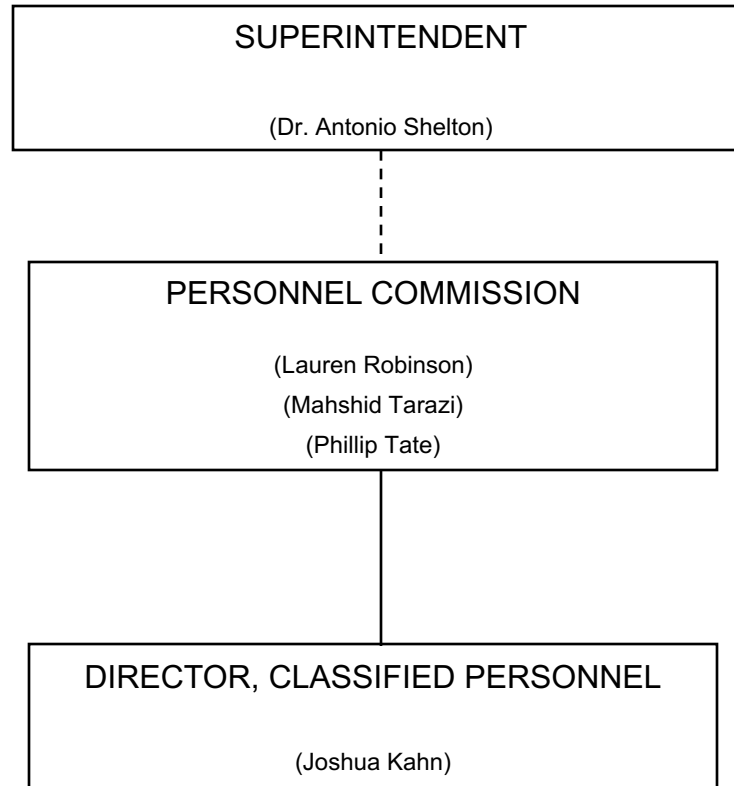
HUMAN RESOURCES



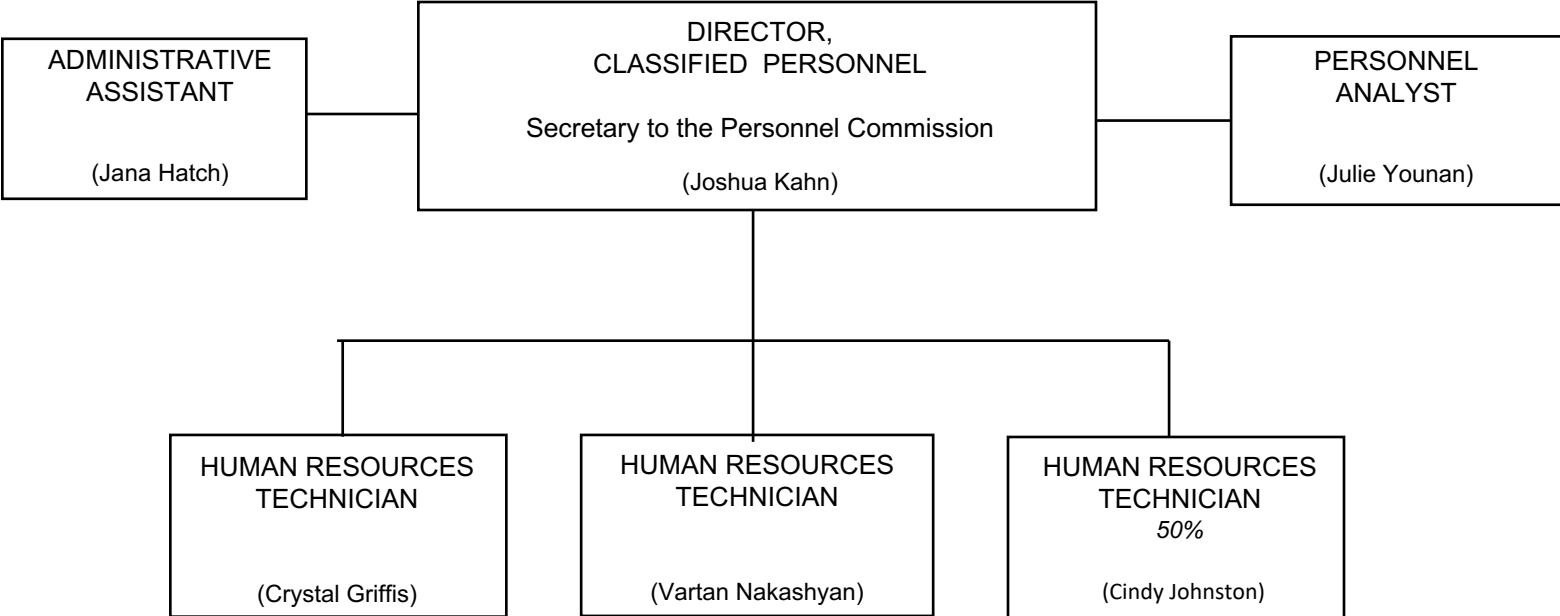
STUDENT SERVICES DEPARTMENT



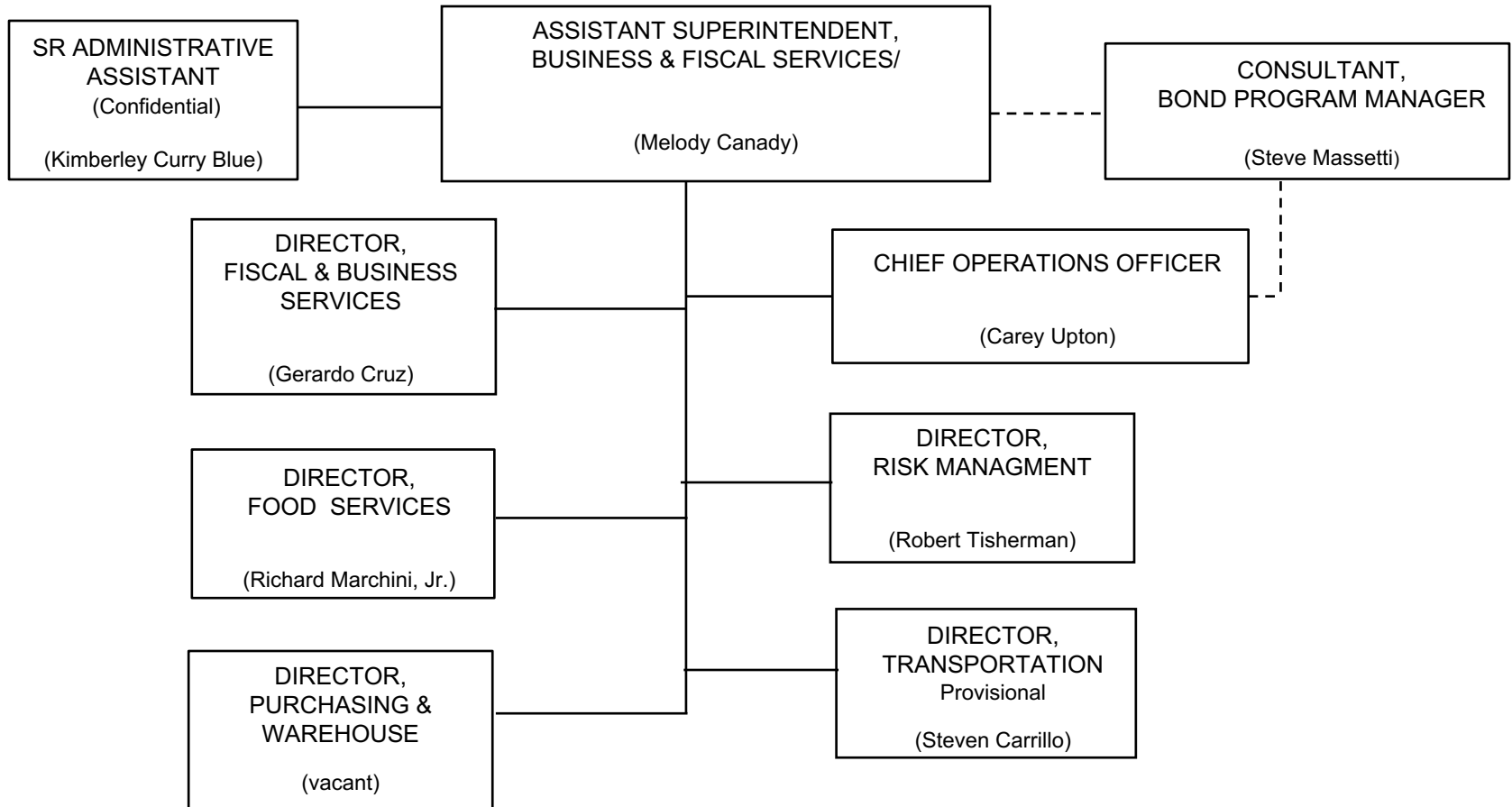
PERSONNEL COMMISSION



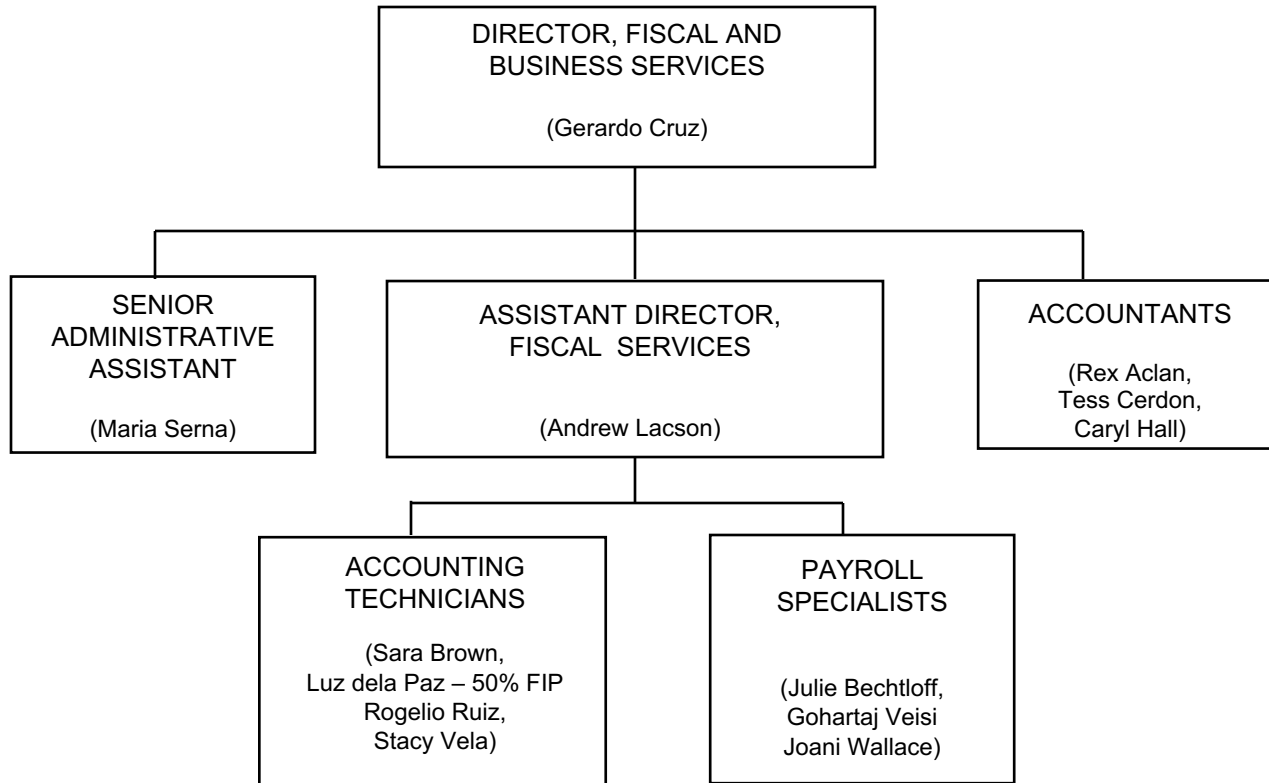
PERSONNEL COMMISSION



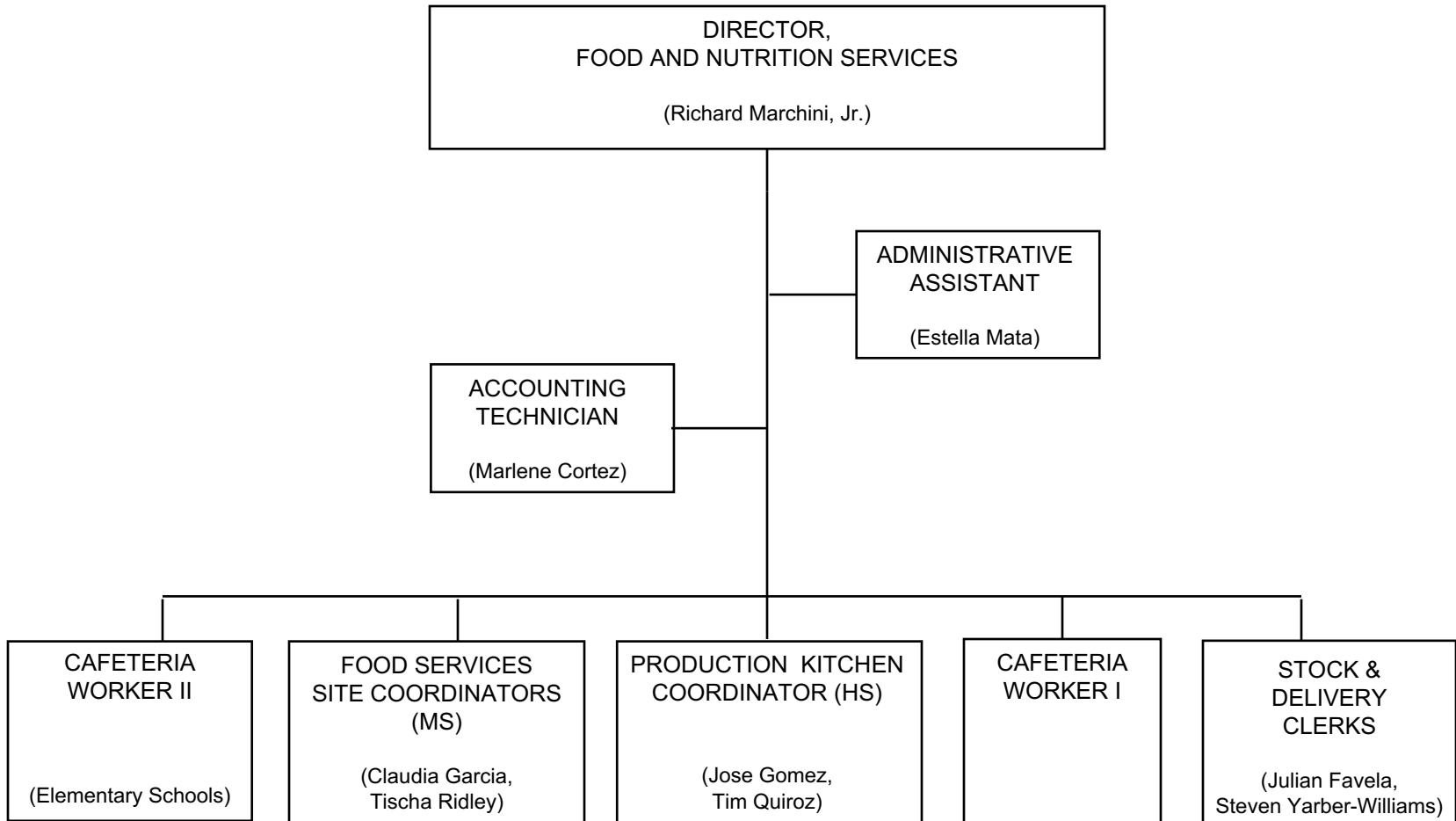
BUSINESS AND FISCAL SERVICES



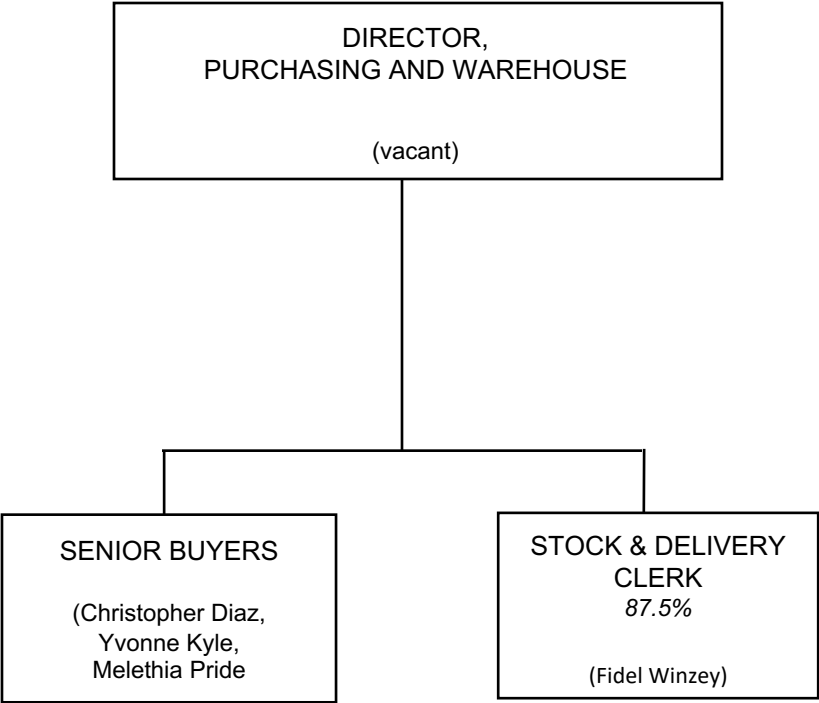
FISCAL AND BUSINESS SERVICES



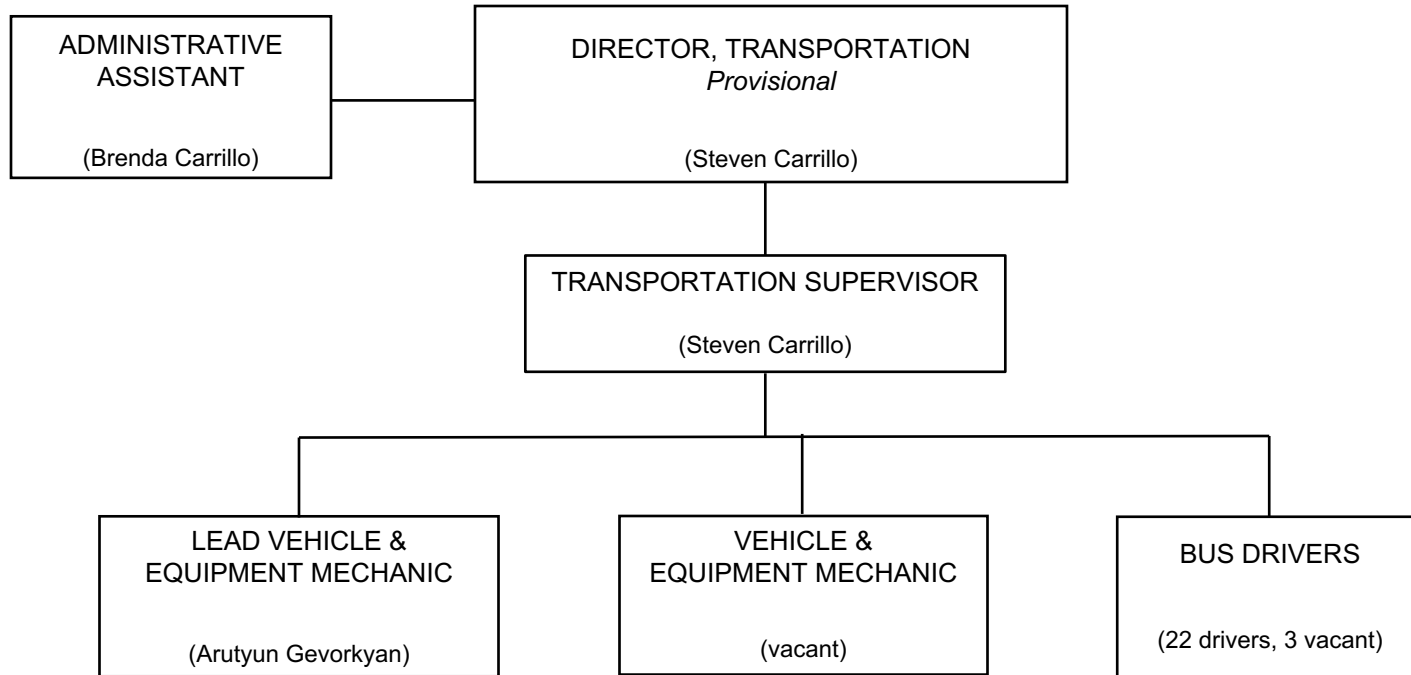
FOOD AND NUTRITION SERVICES



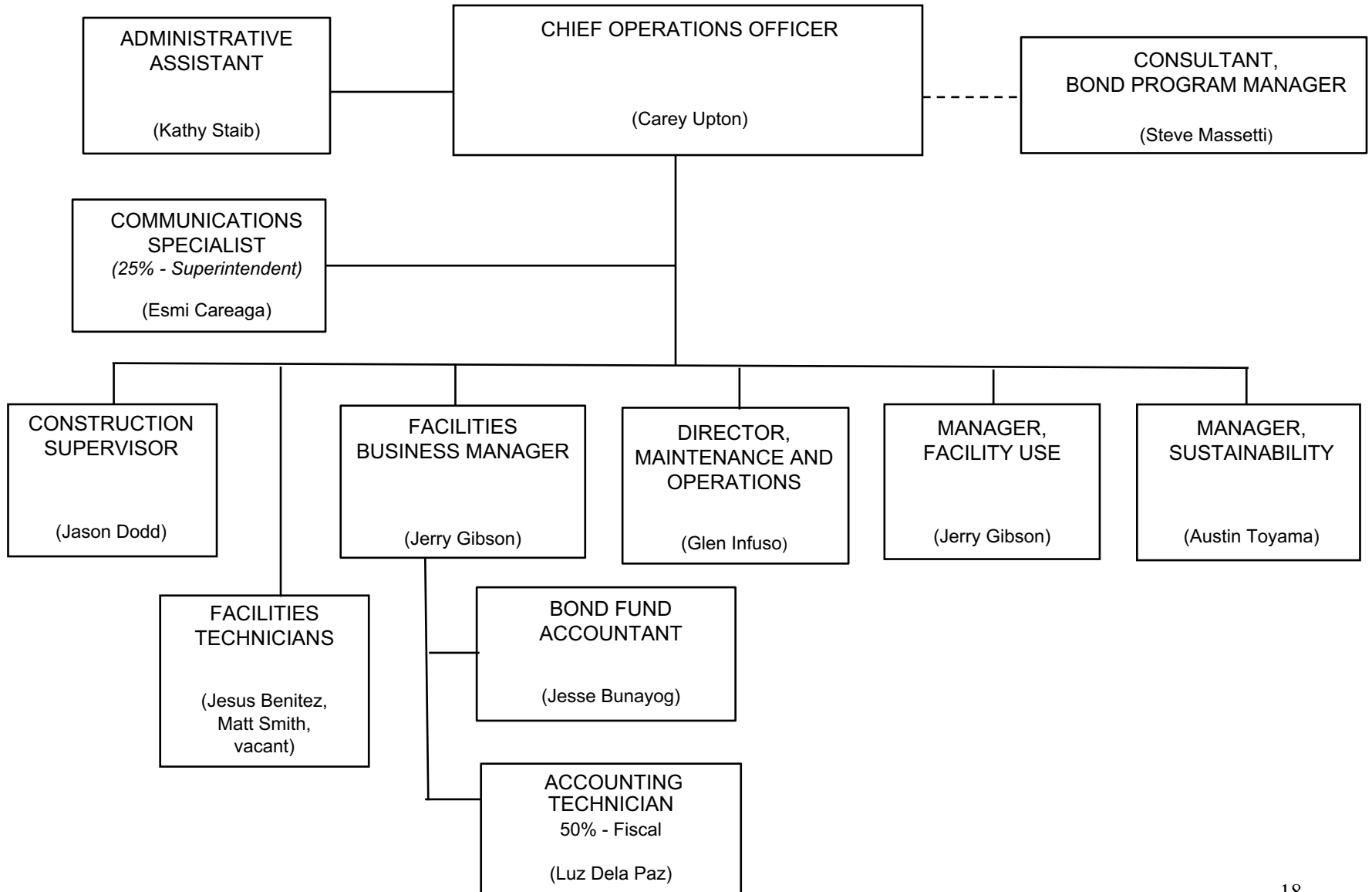
PURCHASING AND WAREHOUSE



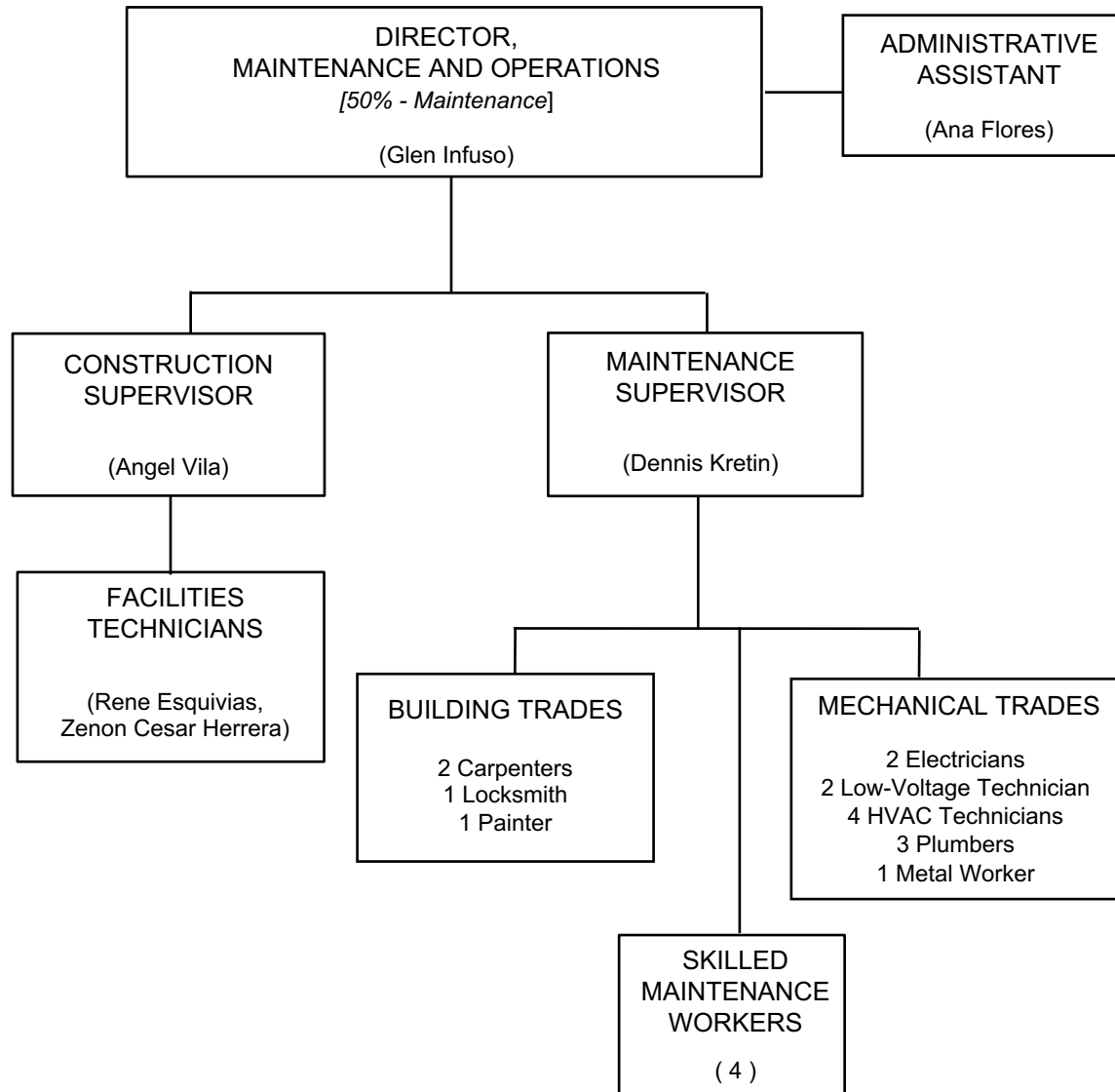
TRANSPORTATION



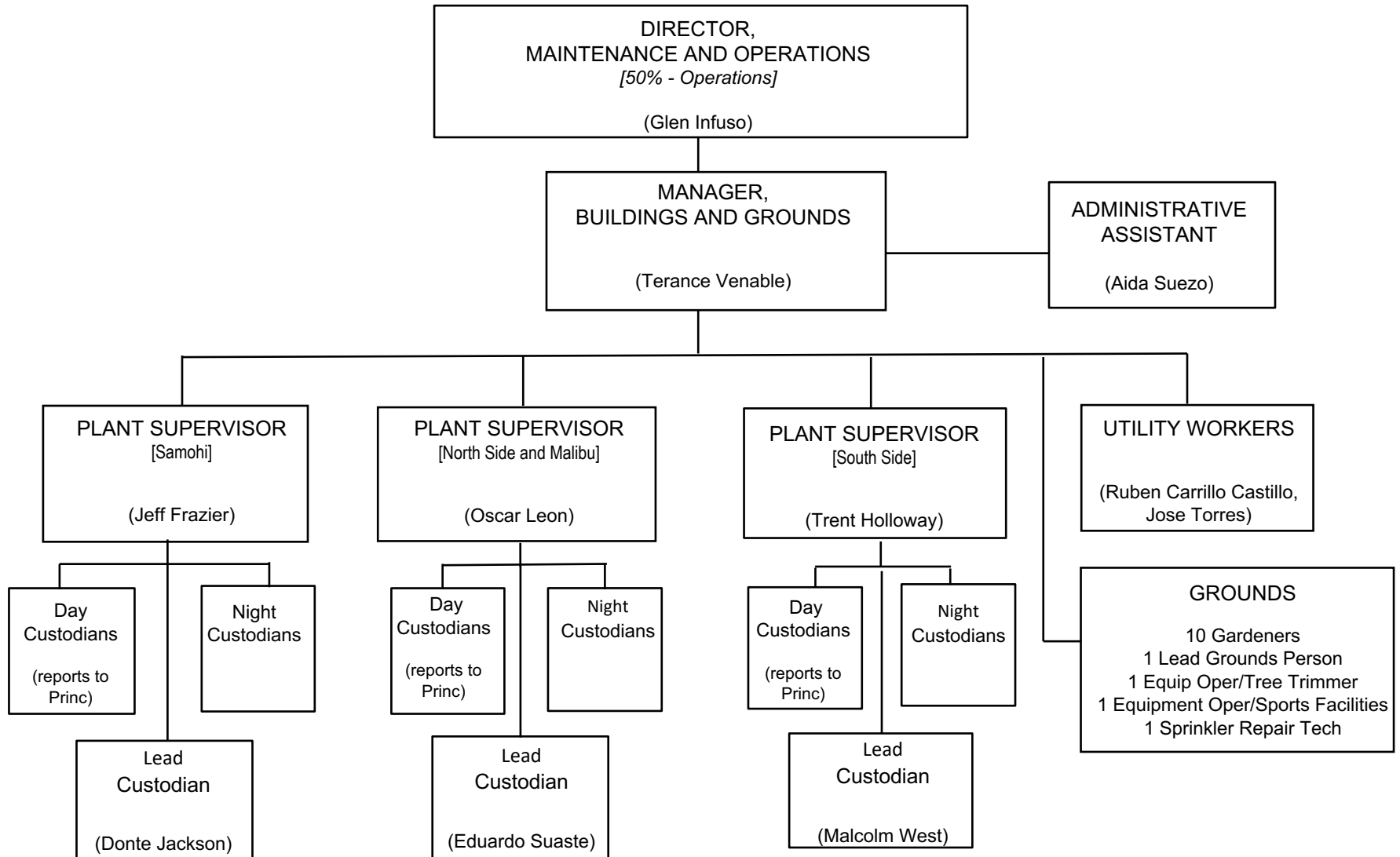
FACILITY SERVICES DIVISION



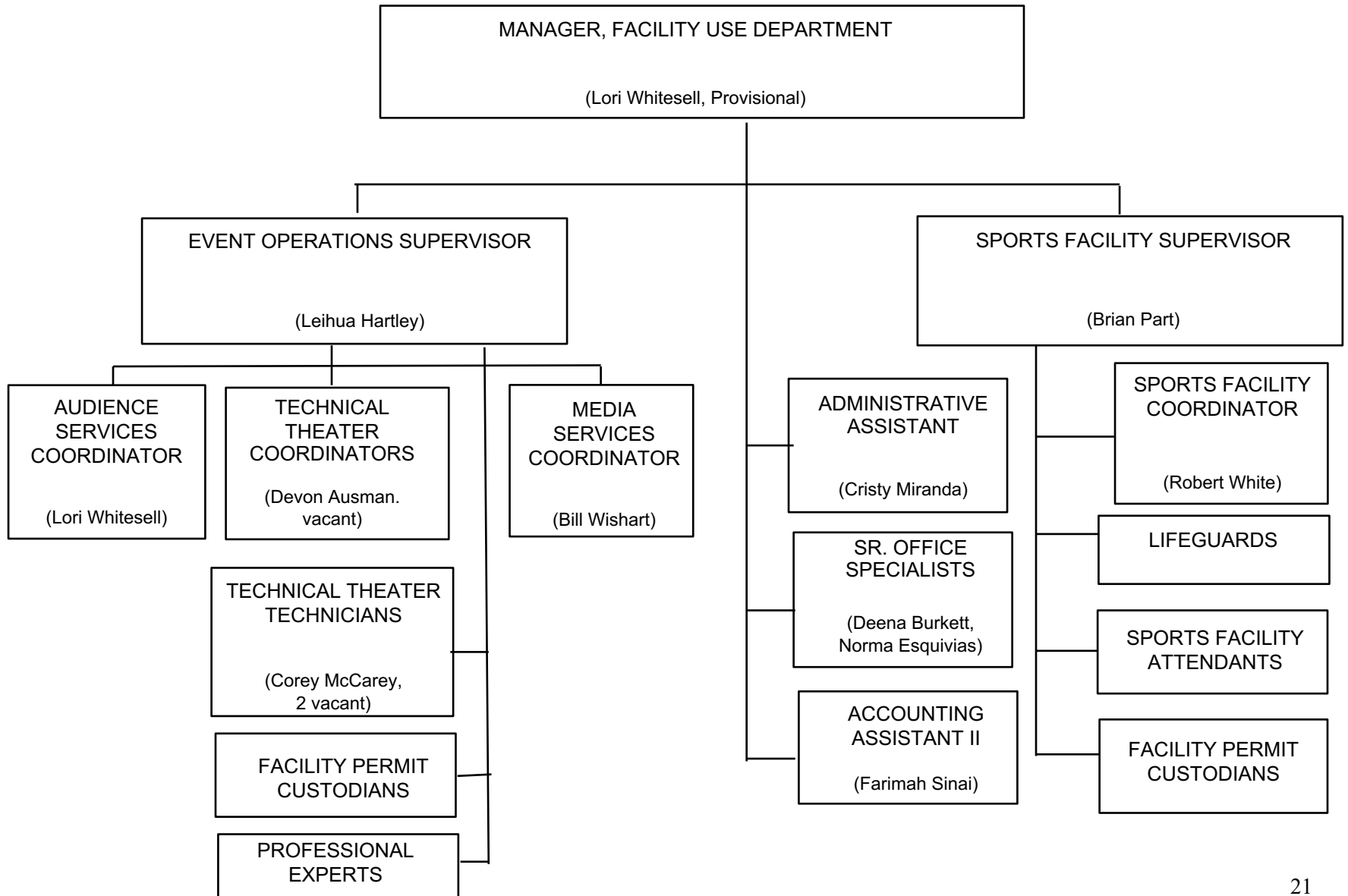
MAINTENANCE AND CONSTRUCTION



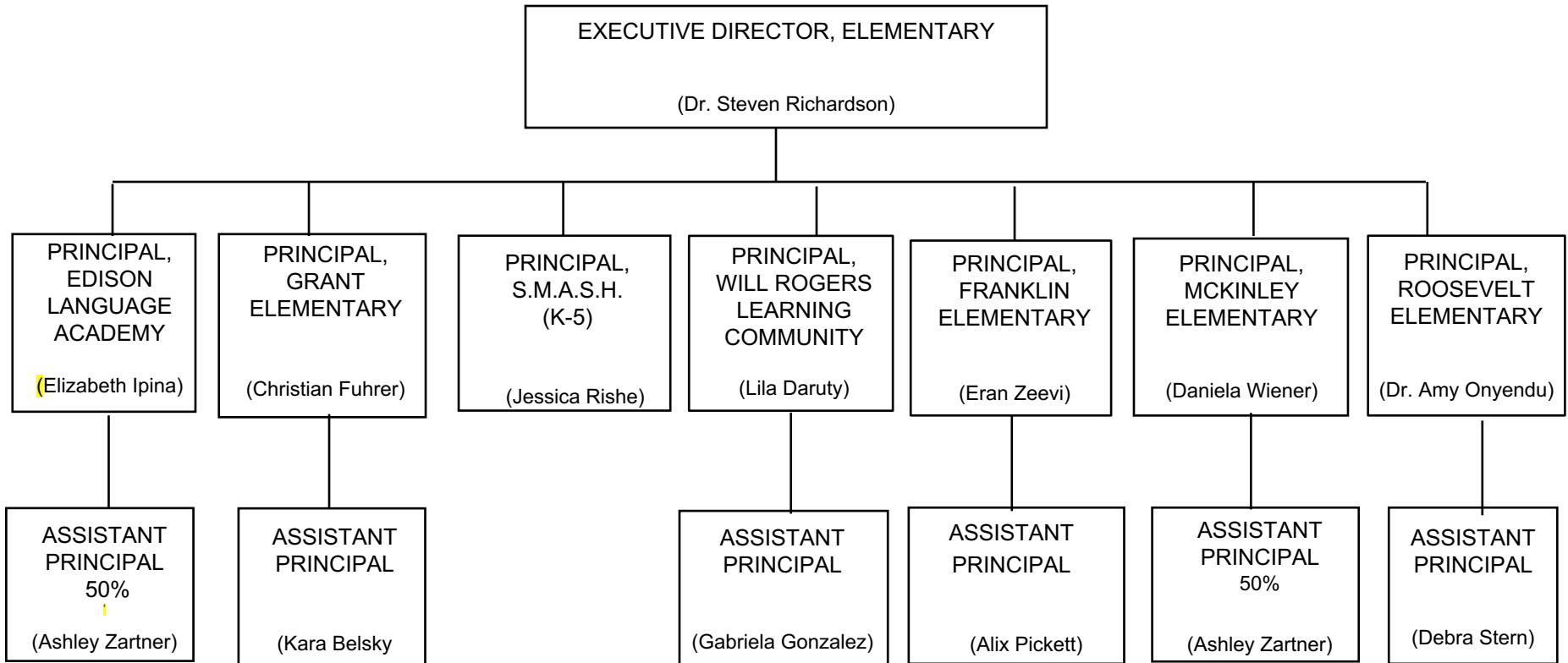
OPERATIONS: BUILDINGS AND GROUNDS



FACILITY USE DEPARTMENT



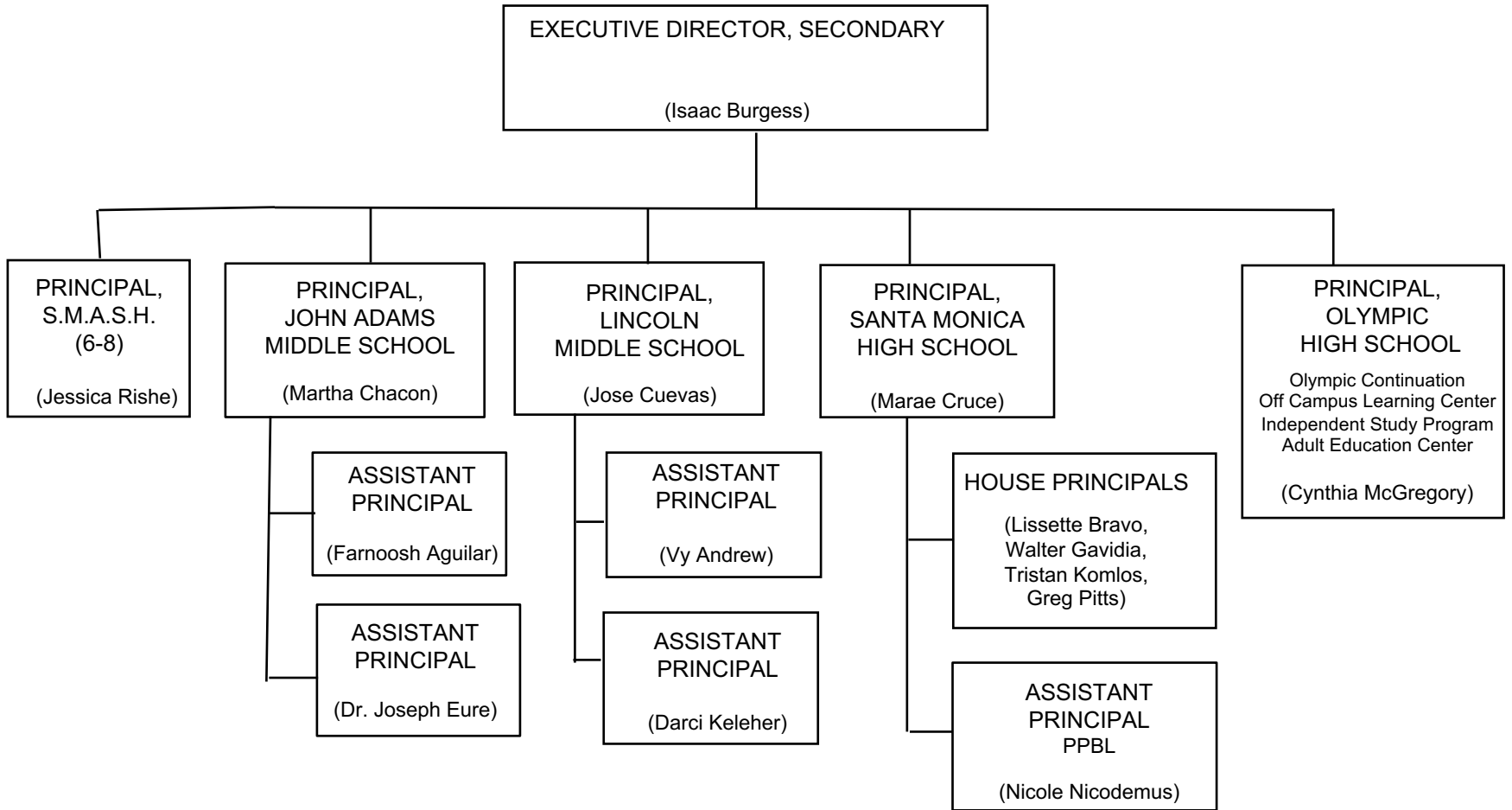
ELEMENTARY SCHOOLS



**JOHN ADAMS PATHWAY:
EDISON, GRANT and ROGERS**

**LINCOLN PATHWAY:
FRANKLIN, MCKINLEY and ROOSEVELT**

SECONDARY SCHOOLS



MALIBU PATHWAY

