

# WILL ROGERS LEARNING COMMUNITY

TK/Kindergarten ROUNDUP





WRLC STAFF

# WE WELCOME YOU!



**Welcome and Introductions**



**Parent Involvement and PTA**



**School Overview**



**Classroom Tours**



**WRLC Office Introductions and Enrollment**

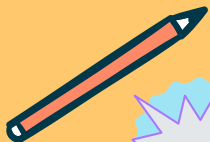


**Student Leadership Panel and Closing**





## As a community, we:



### KNOW:

All children can learn



### BELIEVE:

that social development is as important as academic development



### CREATE:

a nurturing environment, in which students, parents, and staff members feel valued



### DESIGN:

rigorous, standards-based learning experiences that meet students' diverse needs



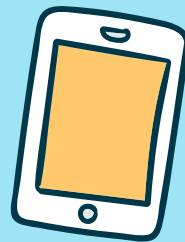
### PROVIDE:

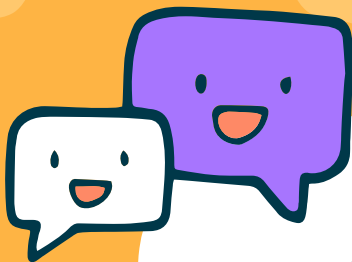
learning opportunities for students, parents, and teachers that encourage lifelong learning



### COLLABORATE:

with parents and the greater community to support student success





**“Students don’t care how  
much you know until they  
know how much you care.”  
– Theodore Roosevelt**

**—THEODORE ROOSEVELT**



# PEACEMAKERS

Will Rogers Learning Community is dedicated to creating a cooperative community where students can learn the value of conflict, strategies for managing conflict, and problem solving skills for win-win solutions to conflict. Students get to feel a sense of agency in their experiences and learn they can often handle their own issues.

The Peacemaker Program is a peer mediation model wherein trained students mediate low to mid level conflicts between other students, modeling and transferring relational skills and problem solving skills.



## 2023-2024 Demographic Data

Students Population	523
Language Distribution	ENGLISH Learners 6.98 % Not ENGLISH Learners 93.02%
General Education	84.53%
Special Education	15.47%
Gender	Male 50.94% Female 49.06%

## Race and Ethnicity

Hispanic	43.29%
White	34.7 %
Black of African American	9.84%
Asian	5.19%
Two or More races	5.39%
Filipino	1%
Native Hawaiian or Other Pacific Islander	1%
American Indian	1%

## Multilingual Representation

Languages Spoken	# of Students
Spanish	29
Russian	1
Turkish	1
Ukrainian	1
Norwegian	1
French	1
Filipino	1
Farsi	1





## The Learner Profile

- Inquirers
- Knowledgeable
- Thinkers
- Communicators
- Principled
- Open-Minded
- Caring
- Risk-takers
- Balanced
- Reflective



### IB International Baccalaureate (IB) program- Authorized in 2021

- The Primary Years Programme is a part of the International Baccalaureate (IB) program. The IB program aims to develop inquiring, knowledgeable, and caring young people.
- PYP is an opportunity for students to construct meaning through concept-driven inquiry.
- Structured inquiry as the vehicle for learning
- Six transdisciplinary themes provide the framework for exploration and the construction of knowledge
- Students develop an understanding of important concepts, acquire essential skills and knowledge, develop attitudes and learn to take socially responsible action.
- Units of Study: Who we are, Where we are in place in time, How We Express Ourselves, How the World Works, How We Organize Ourselves and Sharing the Planet



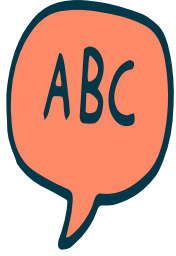
# OUR DISTINGUISHING FEATURES



- Will Rogers is a place of joy!
- We prioritize the intellectual, academic and social emotional development of ALL learners.
- Learning is facilitated through the workshop model of inquiry and project based learning.
- Sense of community: Student and parent friendships!
- Global Thinkers



# OUR TK/KINDER TEACHING TEAM



TK

Ms. Amy Turner

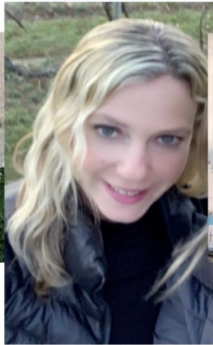
Amy



Hannah



Maureen



SALLY



SITARA



K

- Ms. Hannah Coughlin
- Mrs. Sally Miller and Ms. Maureen Reilly
- Sitara Contreras



# CURRICULUM

- Building curious learners
- Growth Mindset
- Learning by doing; Mistakes are how we learn!
- Bridge discrete skill acquisition to real world applications.
- Balance of Fiction and Non-Fiction Texts
- Academic Vocabulary
- Adaptive computer programs (Lexia, and Freckle and Dreambox)
- Teach Foundational skills
  - Counting collections
  - Haggerty, Words Their Way
- TC Reading/Writing Workshop
- Library Visits
- Cognitively Guided Instruction
- Problem Solving; Sense Making





# ENRICHMENT

- Physical Education Classes
- PS Arts Visual Arts
- Music/Performing Arts Program (Grades 3-5)
- Climate and sustainability Instruction in our Regenerative Farm
- Spanish Language Class (grades 2nd-5th)
- STEM/INQUIRY Classes
  - Theatrical DANCE (grade 5)
  - Cultural Dance (grade 4)

## STEM



## The Arts



## The Regenerative Farm





# TRANSITIONAL KINDERGARTEN IN SMMUSD

- TK is a separate year from Kindergarten; students will not “skip” Kinder if they participate in TK.
- TK is a BRIDGE between Preschool and Kindergarten
- The 5-hour TK school day in SMMUSD is free for enrolled students
- Students who qualify for Special Education Services will have supports per their IEP
- Required class ratio of 1 professional staff member for every 12 students (enrollment limited to 24 students)

## SMMUSD TK classrooms are:

- Reggio Emilia Inspired
- STEAM Enhanced
- SMMUSD Aligned

**Currently TK is for students who turn 5 between Sept. 2<sup>nd</sup> and Jun. 2<sup>nd</sup>**

	Septemb er 2 <sup>nd</sup>	October 2	Novem ber 2 <sup>nd</sup>	Decemb er 2 <sup>nd</sup>	January 2 <sup>nd</sup>	February 2 <sup>nd</sup>	March 2 <sup>nd</sup>	April 2 <sup>nd</sup>	May 2 <sup>nd</sup>	June 2 <sup>nd</sup>	July & August
<b>2022-23 School year</b>	<b>Any child turning 5 between Sept. 2, 2022 and Feb. 2, 2023</b>										
<b>2023-24 School year</b>	<b>Any child turning 5 between Sept. 2, 2023 and April 2, 2024</b>										
<b>2024-25 School year</b>	<b>Any child turning 5 between Sept. 2, 2024 and June 2, 2025</b>										
<b>2025-26 School year</b>	<b>Any child who turned 4 before September 1<sup>st</sup> is eligible for TK in the 2025-26 school year</b>										

## Exploration



## Learning Through Play





# OUR FRONT OFFICE TEAM

- Noelle Sandoval, Administrative Assistant
- Maria Nielson, Senior Office Specialist
- Marlen Avalos, Senior Office Specialist
- Flory Vila, Bilingual Community Liaison

**ENROLLMENT  
FEB. 5th**

**WILL ROGERS  
ENROLLING YOUR CHILD  
STEP-BY-STEP**

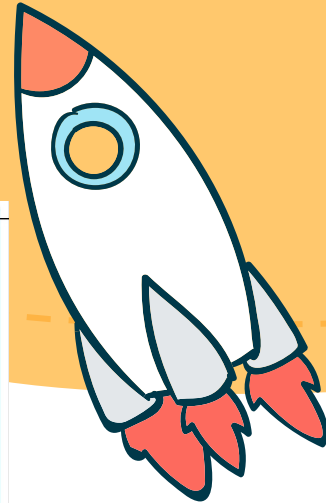
**ENROLLMENT BEGINS  
FEBRUARY 5TH**

Enrollment Step by Step:

1. Address verification
2. Check immunization records
3. Complete digital enrollment. A link will be emailed once address and immunization have been verified.

**Scan QR Code  
to schedule an appt  
or visit:**

**<https://www.smmusd.org/domain/4194>**







**WILL ROGERS**  
**PTA®**

## The Will Rogers Parent Teacher Association (PTA)

- **parents, family members, teachers, staff, and community members**
- **dedicated to positively impacting** the lives of **all children and families** at Will Rogers Learning

Parents / Guardians

+

Teachers / All Staff

=

Student Success



Will Rogers Learning Community

**PTA®**

# WRLC PTA Website

www.willrogerspta.com



The screenshot shows the homepage of the Will Rogers PTA website. At the top is a navigation bar with the Will Rogers PTA logo on the left and links for Home, Calendar, Join PTA, Events & Fundraisers, Contact Us, and a yellow DONATE button on the right. Below the navigation bar is a large photograph of three young girls running happily in a park. Overlaid on the bottom right of the photo is a white oval with a yellow border containing the text 'Will Rogers PTA' and a paragraph describing the organization. At the bottom left of the page is a small circular logo and the text 'Will Rogers Learning Community'. At the bottom right is a blue button with a white plus sign and the text 'Learn more'.

**WILL ROGERS PTA** Home Calendar Join PTA Events & Fundraisers Contact Us **DONATE**

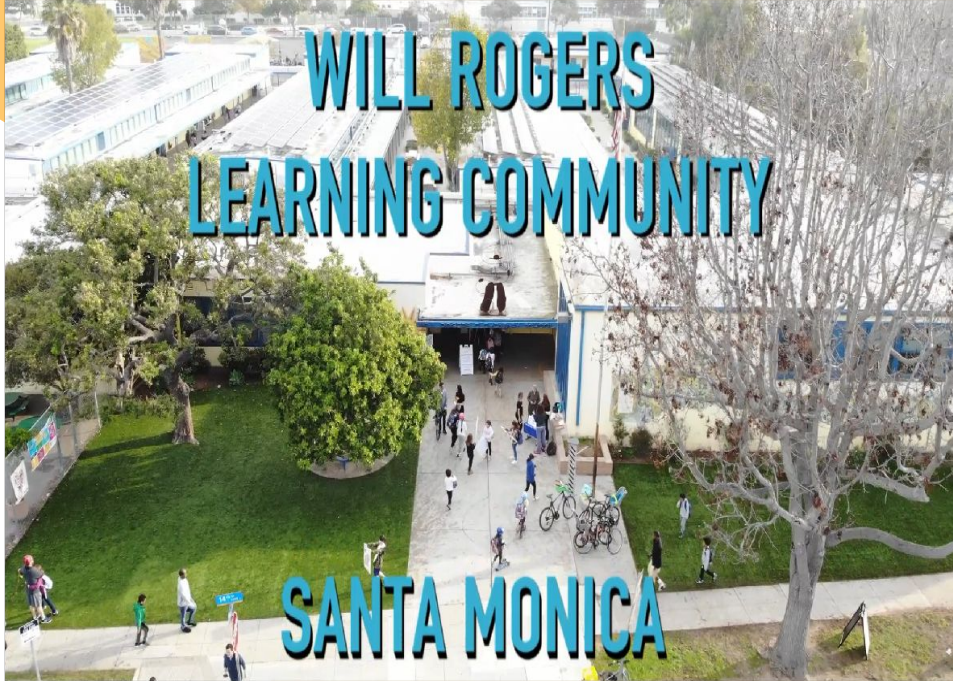
## Will Rogers PTA

The Will Rogers Parent Teacher Association (PTA) is made up of parents, family members, teachers, staff and community members dedicated to positively impacting the lives of all children and families at Will Rogers Learning Community, an International Baccalaureate World Elementary School in Santa Monica, California.

**Will Rogers Learning Community**

**PTA**

**Learn more**

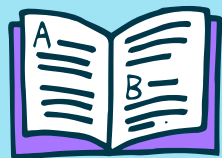


## CAMPUS TOURS

Please stay with your tour guide throughout the tour.

Return to the auditorium by **10:20 a.m.** for questions at the conclusion of the tour.





THANK YOU!

