



The McKinley Weekly Mini-Messenger

For Schoolwide Info and Updates Each Week

Date: 8/23/21

Important Announcements and Reminders

Thank you for a great first two days of school! We know how scary it must have been to send your child to school in the age of covid, but we are so appreciative of your trust in us. We couldn't be so successful without your teamwork! Thank you for your positivity, flexibility, and support as we all reemerge in this pandemic.

The new **Pre-Screening Website** is up and running. Parents can register their child at <https://smmusdstudentcovidscreen.lintelio.com/>
Families with siblings only need to register for 1 child (the eldest) because the screening is for your whole Household. So if anyone in the household has symptoms, covid, or exposure, the children would not be able to report to school.

Once registered, you will receive a personalized email link at 5am daily with covid questions to answer. Once answering the questions, if the screen is green come to school and show the green screen at the gate. If the screen says you are on hold, the link will not be resent, and you cannot come to school until cleared by the nurse.

McKinley's Instructional Coach has created **a video tutorial** explaining how to register and how to do the daily screening questions.

<https://www.youtube.com/watch?v=NWQduKtPPwA>

Student and Staff COVID testing is expected to start next week pending board approval of testing companies at Monday evening's Board Meeting. Please see the 8/20 email from Superintendent Dr. Drati for more info.

Parents will need to register their child for the weekly tests. Registration information is still being finalized by the testing company and the District. Once Principals receive this information, it will be shared with families.

It is expected the testing company will be scheduled to come to McKinley one day a week and will go to each classroom, where students will self-administer a PCR test (the painless test that goes in the very tip of the nose). Only students and staff with a negative test will be permitted onto the campus.

Families may submit a [test and or mask exemption form](#) for religious grounds, disability, medical condition, mental health condition, or hearing condition that prevents their child from participating.

Information pertaining testing and covid can be found at www.smmusd.org/Coronavirus

Back to School Night is this Tuesday 6pm for TK-2nd and 7pm for 3rd-5th. Your teacher will email you a Zoom link. Teachers will provide an info session sharing details about the school and classroom routines, curriculum, behavior systems and more.

For **1st-5th afternoon Dismissal**, please inform your child if you plan to pick them up at their assigned grade level gate by walking/parking and waiting at the gate, or if you plan to pick them up at the car drive-through at the Courtyard Gate. That way students know where to expect their parent.

If you give permission for your child to walk home on their own please let the teacher know and note this on the emergency card.

This Week			
Day	Date	Time	Event
Monday	8/23		
Tuesday	8/24	6:00pm 7:00pm	Minimum Day, Early Dismissal Back to School Night! 6-7pm TK-2 7-8pm 3 rd -5 th Teachers will email Zoom Links
Wednesday	8/25		Last Reminder- Every Wednesday Early Dismissal 1 st -5 th
Thursday	8/26		
Friday	8/27	8:45am 4:00pm	PTA Meeting, Zoom First Day Packets Due by Email or to Office

Next Week			
Day	Date	Time	Event
Monday	8/30		
Tuesday	8/31		
Wednesday	9/1		
Thursday	9/2		
Friday	9/3	8:45am	Room Parent Meeting, Zoom

Upcoming Dates and Events	
9/6 and 9/7 No School	
9/10 4pm Back-to-School Picnic	
9/16 No School	
9/17 AASG Meeting	

Flyers Attached	
Pre-Screening Website Directions	
Back to School Night	
PTA Meeting	
Back to School Picnic	
SMEF Match	
Special Ed Resource Group	



Santa Monica-Malibu USD - Student screens for symptoms of COVID-19 to help protect everyone's health.

We're proud to use Lintelio, the workplace health and safety tool, to help maintain a healthy environment. Here's how to use the screening feature:

1. Scan the code

Scan the QR code, on the right. This is done by:

- Opening your camera app,
- holding camera up to the code,
- and then clicking on the notification that will pop up.

2. Register

Enter the requested information to register.

3. Screen

Answer a simple series of questions, based upon CDC guidelines.

4. Follow the next steps

Your next steps will be listed on your smart phone.



If you have any questions, please contact:

the school office





Process and Questions

We're proud to use Lintelio, the workplace health and safety tool. Here's how it works:

1. Registration Process

Registering for **Lintelio** is easy! You'll need to:

- 1. Follow Link:** Your organization will send you a link to register.
- 2. Set Up Log In Information:** Depending on your organization's choice, you might log on with:
 - Your phone number and a verification code, which will be sent to your phone by text message every time you log on;
 - Your phone number and password, selected by you;
 - Your email and password, selected by you;
 - Or, single-sign-on (SSO), compatible with your organization
- 3. Your Information:** You will be asked for your **First** and **Last Name** and to indicate whether you are **Healthcare Personnel** or **not**. Your employer may also ask you to include another piece of identifying information (it could be an employee id, manager name, school, etc.) You will then review and select if you agree to the **Terms of Use** and **Privacy Policy**. You may also have the option to sign up for **daily screening reminders**. *If you have any questions about this information, please refer to your supervisor.*
- 4. Ready to go!:** Congratulations! You're ready to start using Lintelio.



1

Follow Link



2

Log In Information



3

Your Information



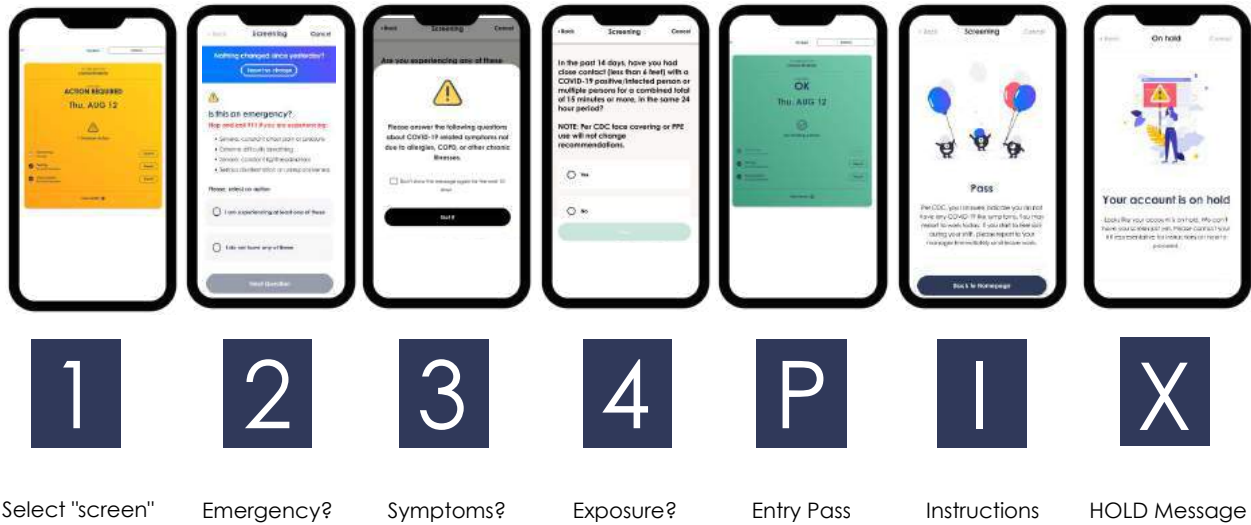
4

Ready to Go!

Please Note: The process and questions displayed are subject to change, based upon CDC guidance.

2. Screening Process

The screening process is simple and can take under 30 seconds. You will first log in and select **screen**. You will then screen for symptoms and exposures by answering a series of questions (explained below) based on CDC guidelines. After you respond to the questions, you will either **pass** and be cleared to enter your organization or be put on **hold** and provided on-screen instructions from your employer on how to proceed.



Please Note: The process and questions displayed are subject to change, based upon CDC guidance.



3. Questions

After you log in, you will begin screening. You will be asked the following questions:

1. Is this an emergency?

Stop and call 911 if you are experiencing any of the following:

- Severe difficulty breathing
- Chest Pain
- Pressure or tightness in the chest
- Difficulty remaining conscious
- Confusion
- Bluish lips or face

You will answer **Yes** or **No**.

2. Please answer the following questions about COVID-19 related symptoms not due to allergies, COPD, or other chronic illnesses.

You will confirm you understand by clicking **Got it**. You may also select **Don't show this message again for the next 10 days**.

3. Are you experiencing any of these symptoms?

- Fever (100.4 °F or higher) or chills
- Cough
- Shortness of breath or difficulty breathing (if you have severe shortness of breath or severe difficulty breathing, CALL 911)
- Muscle or body aches; OR illness-related fatigue
- Headache
- New loss of taste or smell
- Sore throat
- Congestion or runny nose
- Nausea or vomiting
- Diarrhea
- I do not have any of these

You will select the symptoms you are experiencing from the above list or, if you are not experiencing any symptoms, you will select **I do not have any of these**.

4. For Health Care Personnel: Have you had close contact (less than six feet) with anyone with confirmed COVID-19 (in or outside of the facility) or any person under investigation with lab results not expected back within 72 hours?

For all other users: In the past 14 days, have you had close contact (less than 6 feet) with a COVID-19 positive/infected person or multiple people for a combined total of 15 minutes or more, in the same 24-hour period? NOTE: Per CDC, face-covering or PPE use will not change recommendations.

You will answer **Yes** or **No**.

Please Note: The process and questions displayed are subject to change, based upon CDC guidance.



GRADES
TK-5

MCKINLEY ELEMENTARY SCHOOL'S

BACK²SCHOOL NIGHT



TUESDAY, AUGUST 24TH

TK-2ND GRADE 6-7 PM,
3RD-5TH GRADE 7-8 PM



**ZOOM LINKS WILL BE PROVIDED
BY INDIVIDUAL TEACHERS**





McKinley Elementary's

PTA MEETING


Join us!!

FRIDAY, AUGUST 27TH - 8:45 AM-10 AM

JOIN US VIA ZOOM

MEETING ID: 890 0366 2870

PASSCODE: 676358



Friday, August 27, 2021
8:45 AM - 10:00 AM

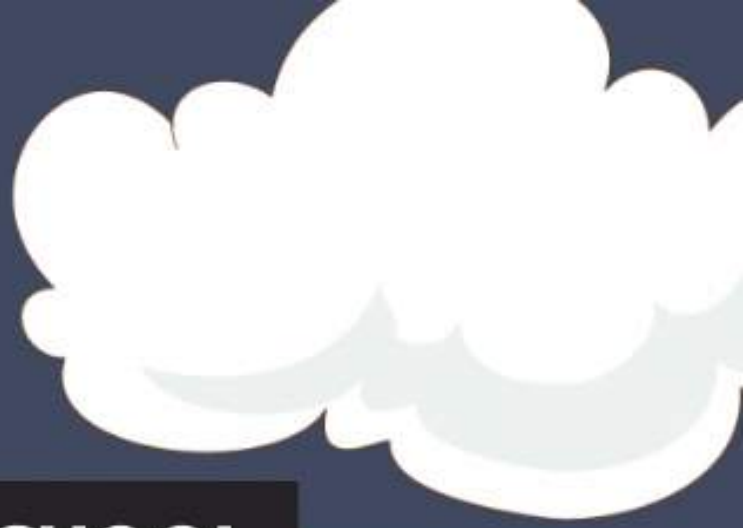
ZOOM
Meeting ID: 890 0366 2870
Passcode: 676358

AGENDA

- 8:45-8:55AM Welcome and Introductions
- 8:55-9:00AM Review of Previous Meeting Minutes
- 9:00-9:10AM President's Report
- 9:10-9:20AM Principal's Report
- 9:20-9:30AM Treasurer's Report
- 9:40-9:50AM Appointed New Board positions/ Vacant Positions
- 9:50-10:00AM Committee Updates / Announcements
 - Back-to-School picnic (8/31)
 - Harvest Festival (10/29)

NEXT MEETING:
September 24th 8:45AM





BACK TO SCHOOL

PICNIC

GREAT FOOD ● GREAT PEOPLE ● GREAT FUN

4-6

PM

SEPTEMBER 10TH

MARK YOUR CALENDARS!

**at mckinley elementary's
play yard**





\$25,000 Match - 25,000 Reasons to Donate

Kilroy Realty is offering a \$25,000 match to start off the new school year! All donations to the Santa Monica Education Foundation, up to \$25,000, will be matched one-for-one through August 31! Please make your gift at smedfoundation.org/mckinley today to double your impact.

Essential staff and programs in Santa Monica schools - like arts classes and instructional aides - depend on your donation. And now, your contribution can go twice as far!

\$25,000 MATCH

THANK YOU FOR GIVING AS GENEROUSLY AS YOU CAN!



The McKinley Special Education Resource Group is a parent support group. We collaborate with the special education staff at McKinley to identify the needs of children with IEPs and 504 plans.

We work together to create and support a community for parents of students with special needs at our school by

- connecting with each other about resources, updated information, and services.
- discussing parent education topics related to special education with our special education staff.
- teaming up with our teachers and staff to create a collaborative learning experience for ALL students.

Contact Hannah McMahon at hannahmcmahon@gmail.com or at (408) 387-0021 to join our distribution list about parent meet ups, special education meetings, workshops, and events taking place within our special education community.