



SANTA MONICA-MALIBU UNIFIED SCHOOL DISTRICT

LCAP District Consultation Committee

Dr. Stacy Williamson

Director of Assessment, Research, and Evaluation

September 12, 2023



Agenda

- Welcome
- Review Norms
- LCAP Executive Summary
- Budget Overview for Parents
- Closure
 - Review Meeting Dates

Working Norms



Be
part of
the
SOLUTION



Keep
EQUITY
at the
center



Be
PRESENT



VALUE each
other's time



HONESTY
(Share Your
Truth)



RESPECT
different
perspectives



Maintain OPEN LINES
of communication



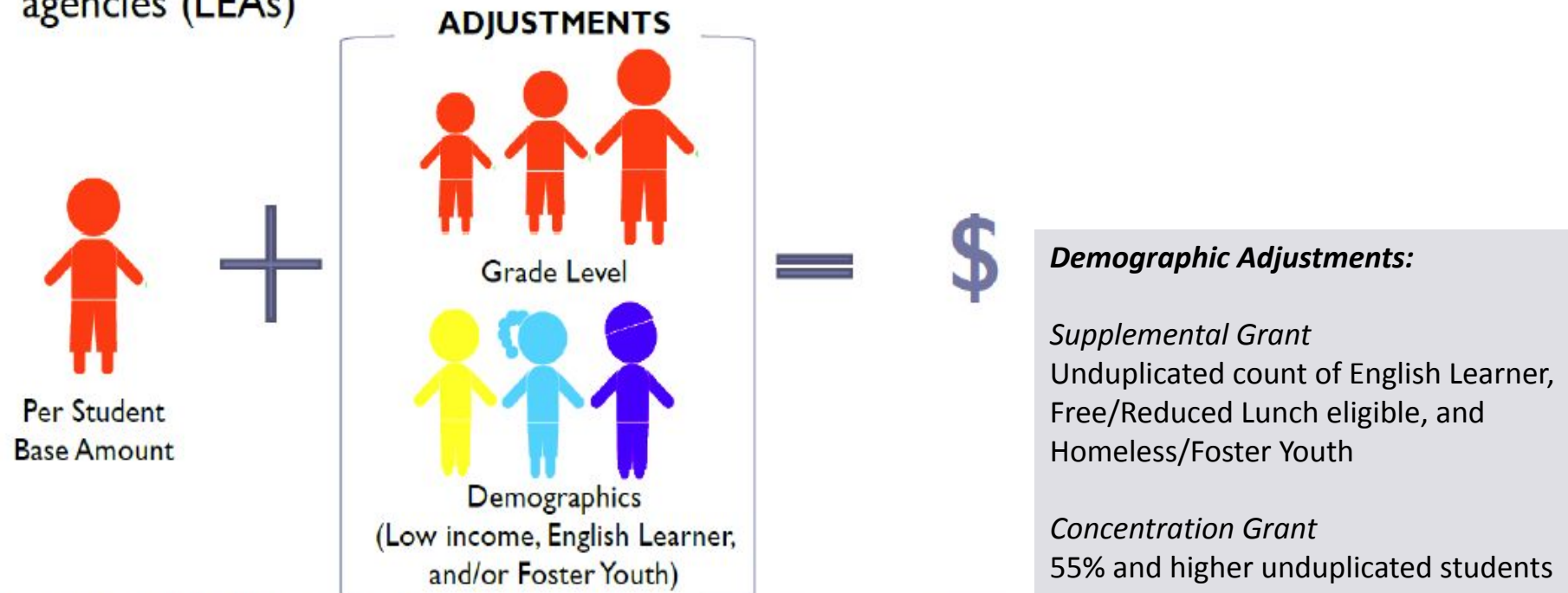
SANTA MONICA-MALIBU UNIFIED SCHOOL DISTRICT

2023-24 LCAP Overview and Executive Summary

LCAP Overview

- Local Control Funding Formula (LCFF)

- ▶ Greatly simplifies state funding for local educational agencies (LEAs)



3-Year LCAP Cycle

Year 1: 2021-22 (LCAP)

Year 2: 2022-23 (Annual Update)

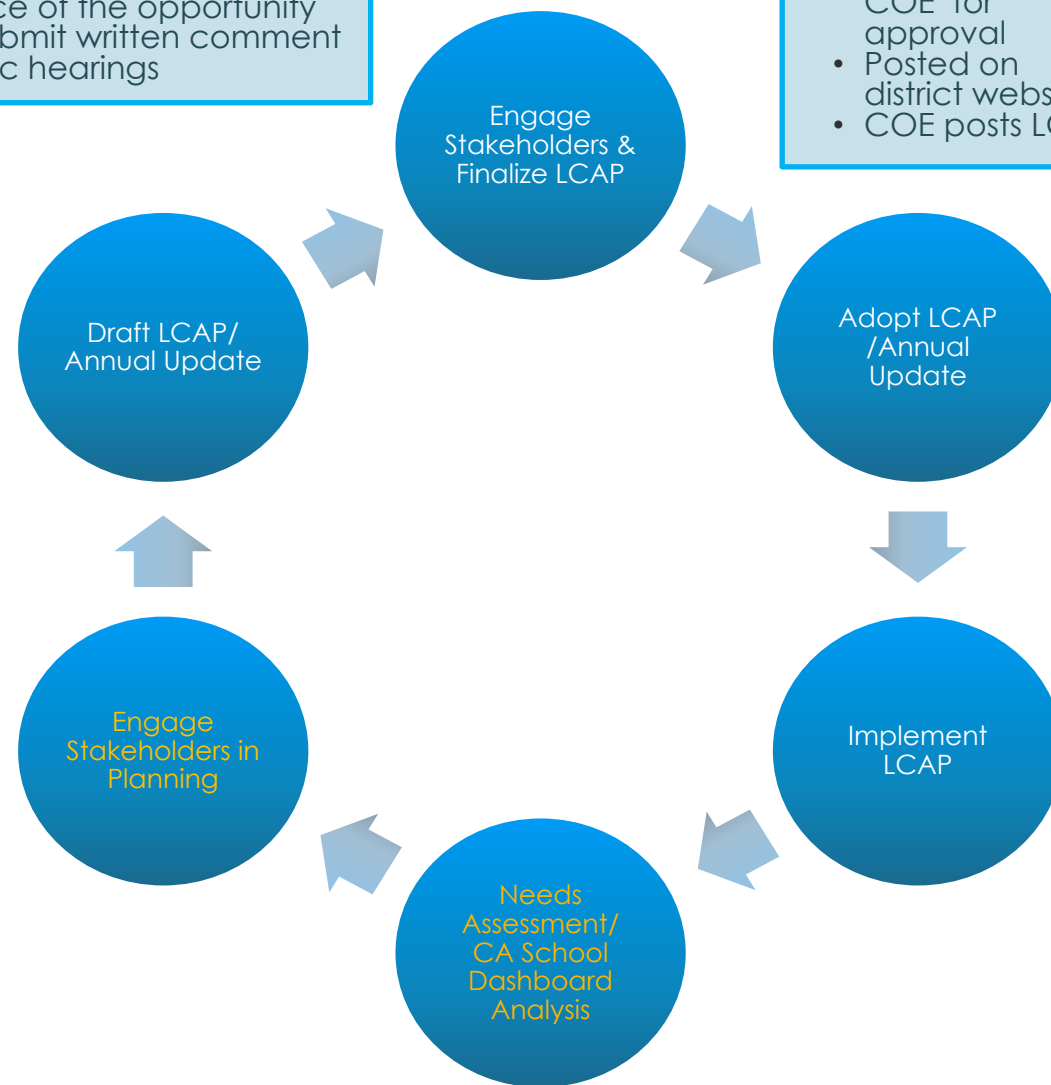
Year 3: 2023-24 (Annual Update)

We implementing the 2021-22 LCAP and planning for year 3 of a revised three year plan

- LCAP District Consultation Committee
- LCAP Parent Advisory Committee (PAC)
- English Learner Advisory Committees (ELAC & DELAC)
- Notice of the opportunity to submit written comment
- Public hearings

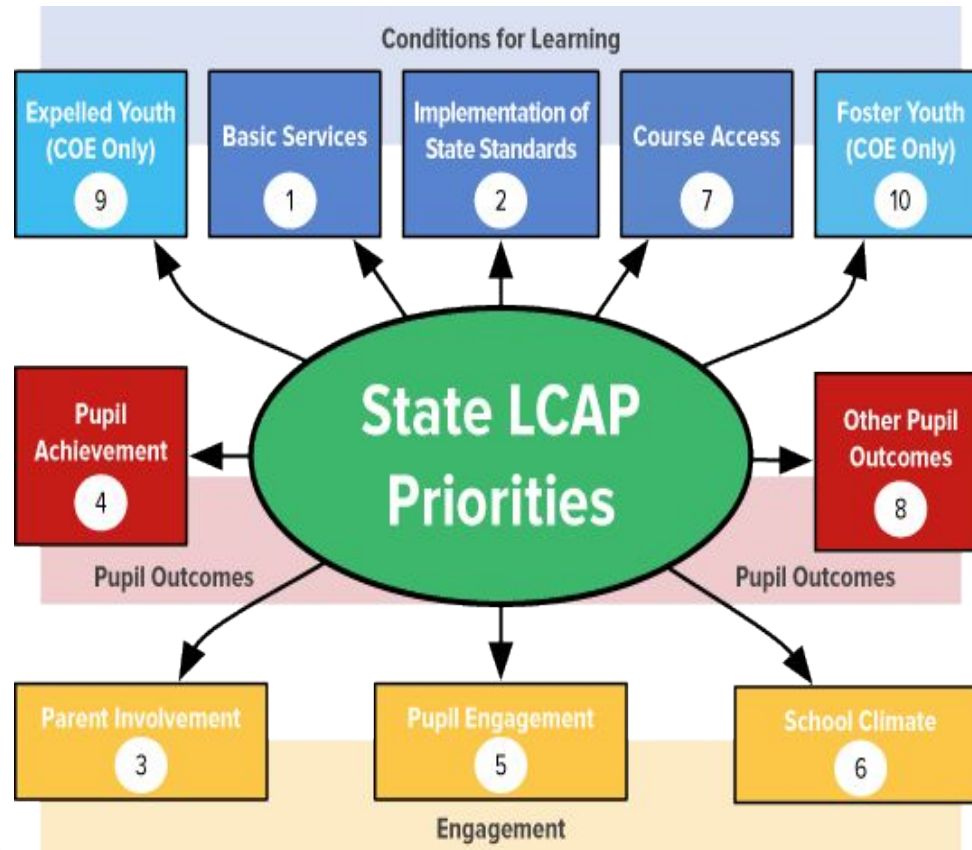
- Adopted concurrent with the district's budget
- Submitted to COE for approval
- Posted on district website
- COE posts LCAP

- Students
- Parents
- Teachers, support staff & administrators
- Local bargaining units
- Local Community



Mapping State LCAP Priority Areas to SMMUSD Prior Goals

State Priority Areas



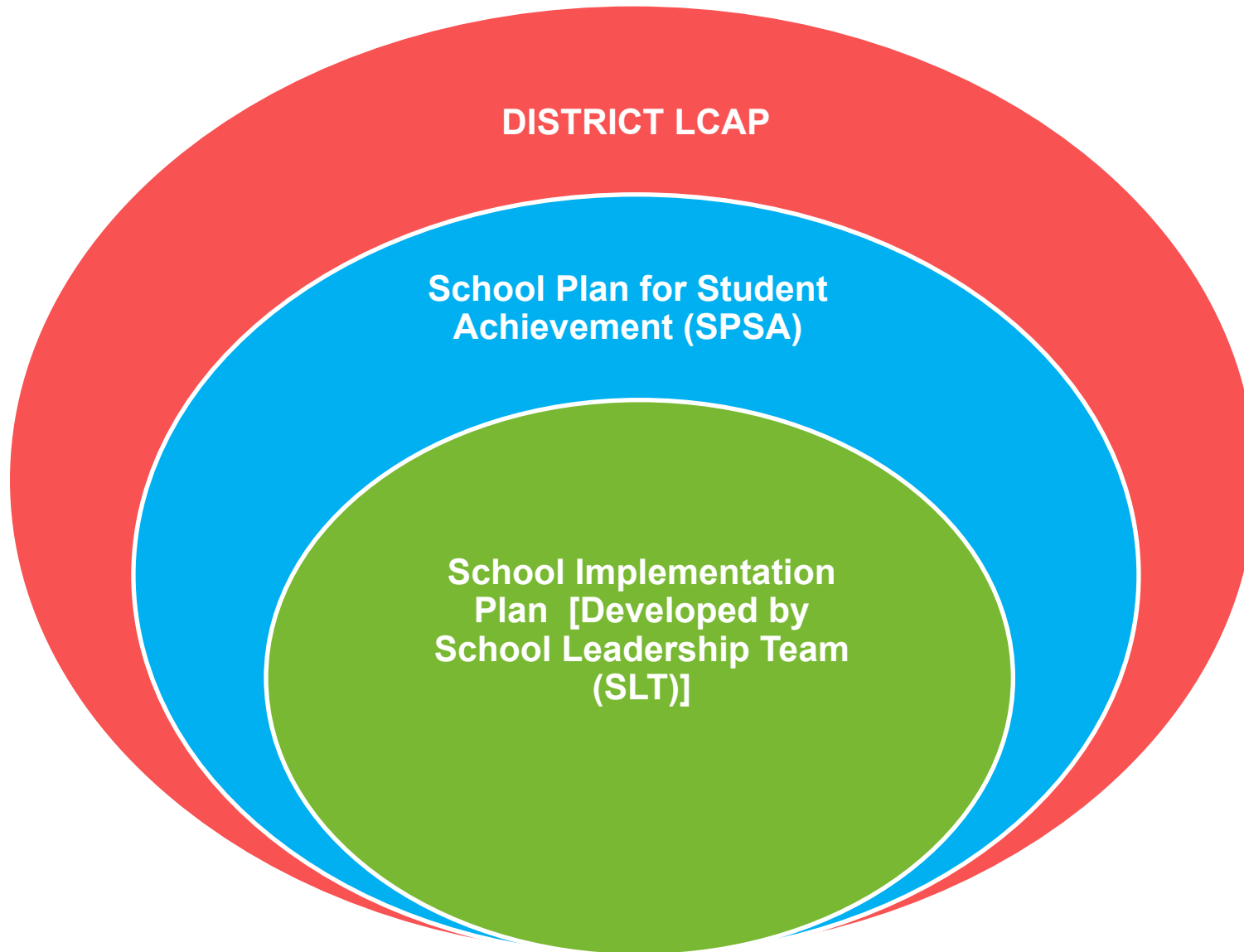
SMMUSD LCAP Goals Mapped to State Priority Areas

Goal 1: All graduates are socially just and ready for college and careers (1, 2, 4, 7, 8)

Goal 2: English Learners will become proficient in English while engaging in a rigorous, culturally and linguistically responsive standards-aligned core curriculum (1, 2, 4, 7, 8)

Goal 3: All students and families engage in safe, well-maintained schools that are culturally responsive and conducive to 21st century learning (1, 3, 5, 6)

LCAP: One Unifying Plan





LCAP Goals

- G1: All graduates are socially just and ready for college and careers
- G2: English Learners will become proficient in English while engaging in a rigorous, culturally and linguistically responsive, standards-aligned core curriculum
- G3: All students and families engage in safe, well-maintained schools that are culturally responsive and conducive to 21st century learning



2023-24 LCAP Executive Summary: Participation and Performance on Assessments

Celebrations:

Close alignment with the scores
STAR shows with CAASPP in both
ELA and Math (Exceeded/Met
Standard)

- Math CAASPP 57%
 - *STAR Math 50%*
- ELA CAASPP 72%
 - *STAR Reading 70%*

CAST (Exceeded/Met Standard) 58%

ELPAC (Level 4) 38%

Growth Areas:

- Participation Rates Vary with Star assessment data (declines in spring)
- Overall Math performance continues to be an area of need
- Significant % of Latinx and Black/African American students do not meet standards in ELA and Math



2023-24 LCAP Executive Summary

GOAL 1

- Implement the Social Justice (SJ) scope and sequence in ELA and begin work to develop a sequence in math
- Professional learning opportunities for teachers on SJ integration
- Professional learning on NGSS, HSS and integration of strategies to support identified student groups
- Teacher implement diagnostic and interim assessments and meet as PLCs to engage in cycles of inquiry
- Continue funding existing supplemental digital resources to provide differentiated or leveled reading material for students
- Continue funding the Educational Support System for Tier III BIPOC students to provide 24/7 live help and feedback from instructors on assignments for 6-12 (CARES Funds)
- Continue with Academic Support Program for Tier III Unduplicated and At-promise students in grades 1-8
- Identify a supplemental digital resource that provides differentiated computer adaptive math support for students in identified skills
- Literacy & Language and Math & Science Coordinators provide ongoing support to ELA and Math curriculum and assessment teams to refine GVC and corresponding assessments
- Instructional Coaches and Early Learning Coach support with the alignment of district wide instructional priorities related to meeting the learning needs of English Learners, Low Income, Homeless/Foster Youth and At-promise students
- Professional Learning opportunities for PK (Seaside) and TK (Bridges) teachers to strengthen and accelerate academic language development
- Subsidies to parents who do not qualify for



2023-24 LCAP Executive Summary

GOAL 1

- Identified Tier II and III student groups in 1st – 8th to participate in summer school
- Provide mental health and social emotional supports during the summer school program time frame to support students and families
- ELs participate in elementary summer language academy to accelerate English proficiency
- Provide ongoing professional learning opportunities that focuses on improving learning opportunities for SWD
- AP Waivers, Subsidies for PSAT and SAT
- Provide alternative strategies in math for Seniors such as Intro to Data Science
- Continue to support AVID and Black College Expo at our secondary sites
- Build teacher capacity to support technology through Tech Jedi program
- Provide embedded professional learning opportunities on the integration of technology in the classroom
- Continue Young Collegians Partnership between SMC and Samohi
- Support professional learning needs of each site as outlined in their SLT plans
- Teacher hourly and/or sub release time to refine curriculum guides and include differentiated resources to support identified student groups
- Literacy & Language and Math & Science Coordinator provide direct support to Instructional Coaches to strengthen instruction for ELs, Low Income, and At-risk students
- Continue strengthening of Dual Enrollment and CTE offerings at Samohi and MHS



2023-24 LCAP Executive Summary

GOAL 2

- Literacy & Language Coordinator provides ongoing support to teachers in English Language Arts, World Languages, and Dual Language Immersion
- Continue providing professional learning opportunities on Cognitively Guided Instruction for English Learners and At-promise students in the area of Math
- Bilingual Assistants to provide support to English Learners in content classrooms at secondary level
- Continue funding digital platform that supports and streamlines the monitoring of EL and RFEP progress
- Literacy & Language Interventionists provide targeted Tier III targeted instruction to students and Long Term English Learners in grades 3-5
- Explore the expansion of the Literacy and Language Tier III interventionist model to middle school as part of a district-wide MTSS approach
- ELD TOSA at the district level to support with the monitoring of English Learner programs and the delivery of professional learning opportunities in designated and integrated ELD
- Additional section at the middle school to provide English Learners an additional period for an elective
- Continue funding EL Program Leads at the secondary to support with the monitoring of EL programs and services at each school site



2023-24 LCAP Executive Summary

GOAL 3

- Bilingual Community Liaisons
- Parent education programming (SMMUSD Parent Conference, FIDA, Latino Literacy Project, Parent Project, etc.)
- Professional Learning on Language Justice and creating multilingual spaces
- Interpretation and translation services
- Let's Talk communication platform
- Student Outreach Specialists at Samohi
- Restorative Justice Consultant
- Mental Health Counseling Coordinator
- Restorative Justice, Olweus and Mindfulness training
- Continue with existing mental health supervisor and intern model in Malibu and expand this model to Santa Monica
- Expand Mental Health Intern support to assist with social emotional need of students and families
- Deepen the implementation of Naviance



SANTA MONICA-MALIBU UNIFIED SCHOOL DISTRICT

2023-24 Budget Overview for Parents

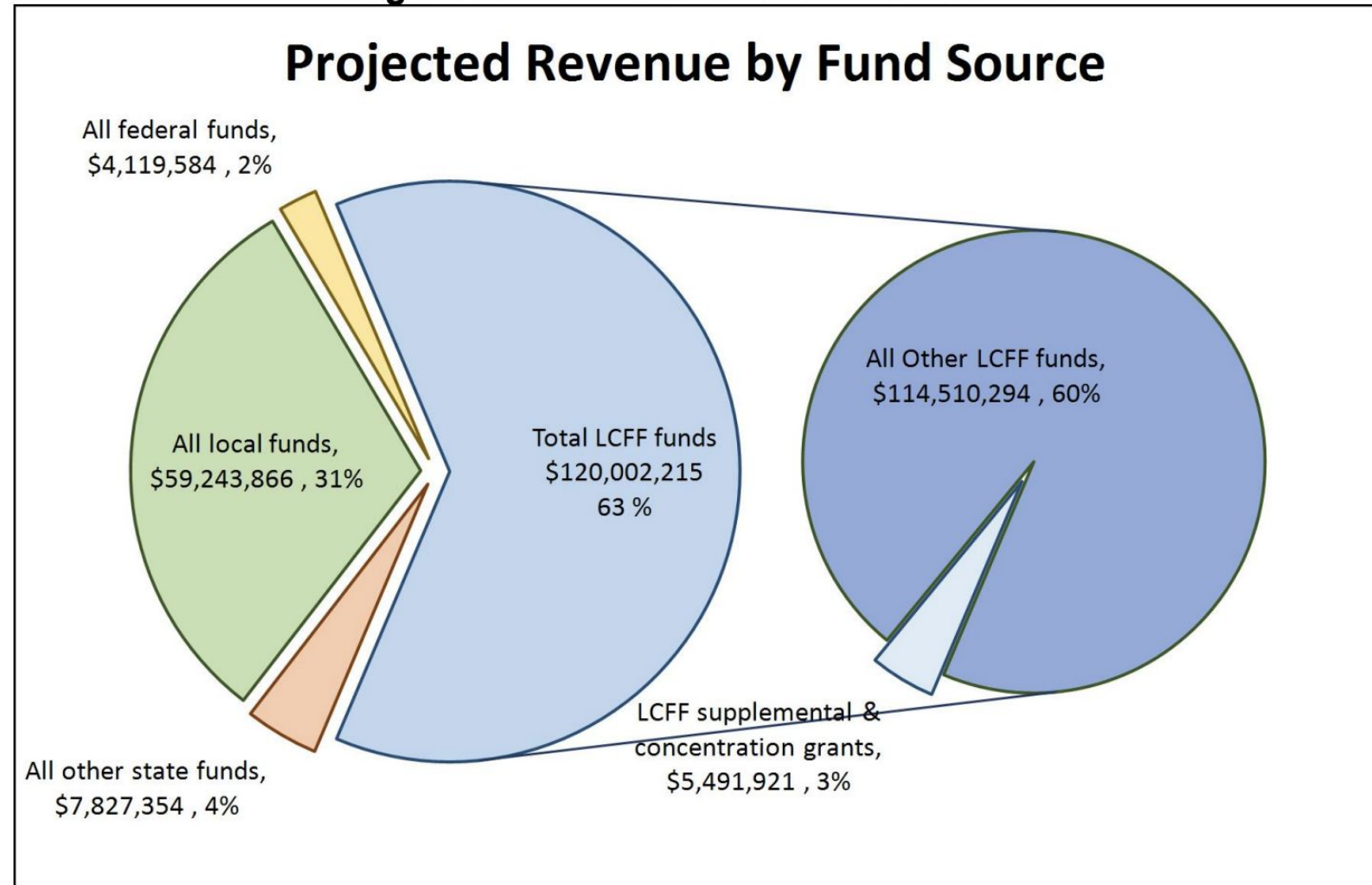


Purpose

- Review the Budget Overview for Parents
 - Projected Revenue by Fund Source
 - Budgeted Expenditures in Local Control Accountability Plan (LCAP)
 - Prior Year Expenditures: Increased or Improved Services for High Needs Students

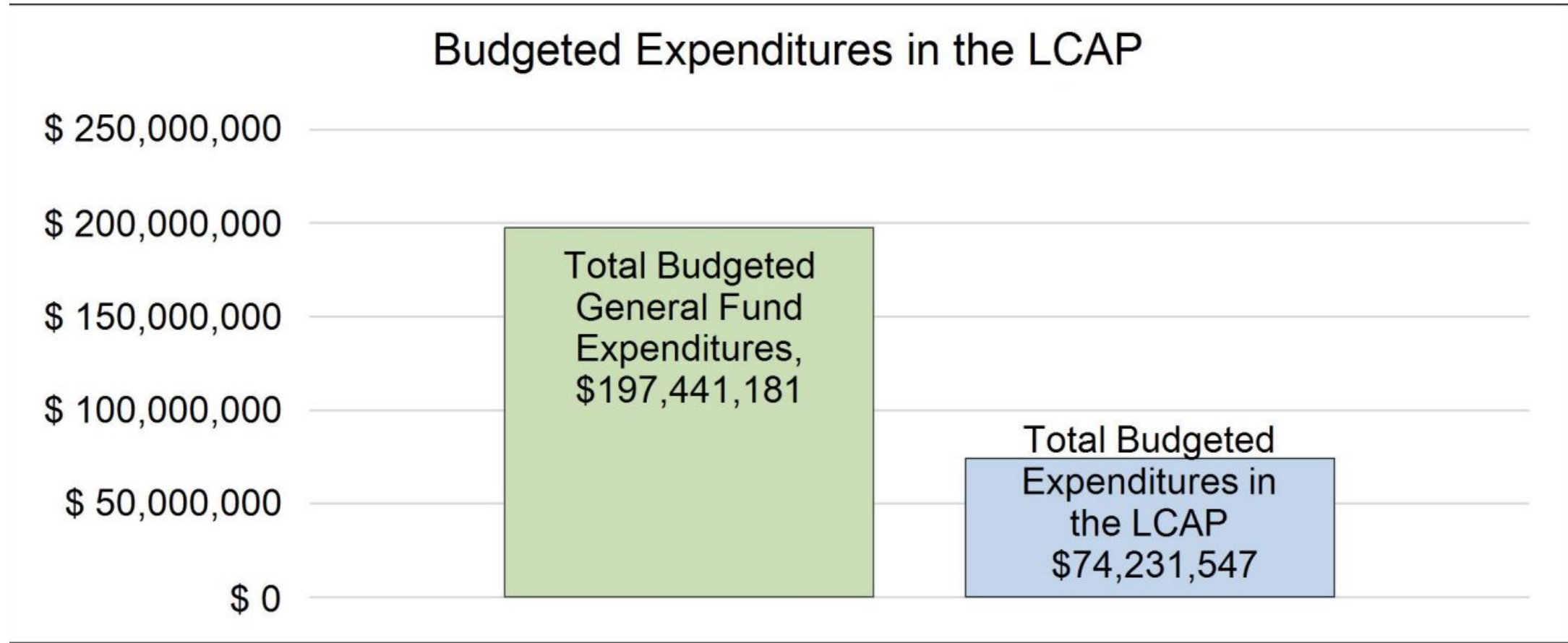
Projected Revenue by Fund Source

Budget Overview for the 2023-24 School Year



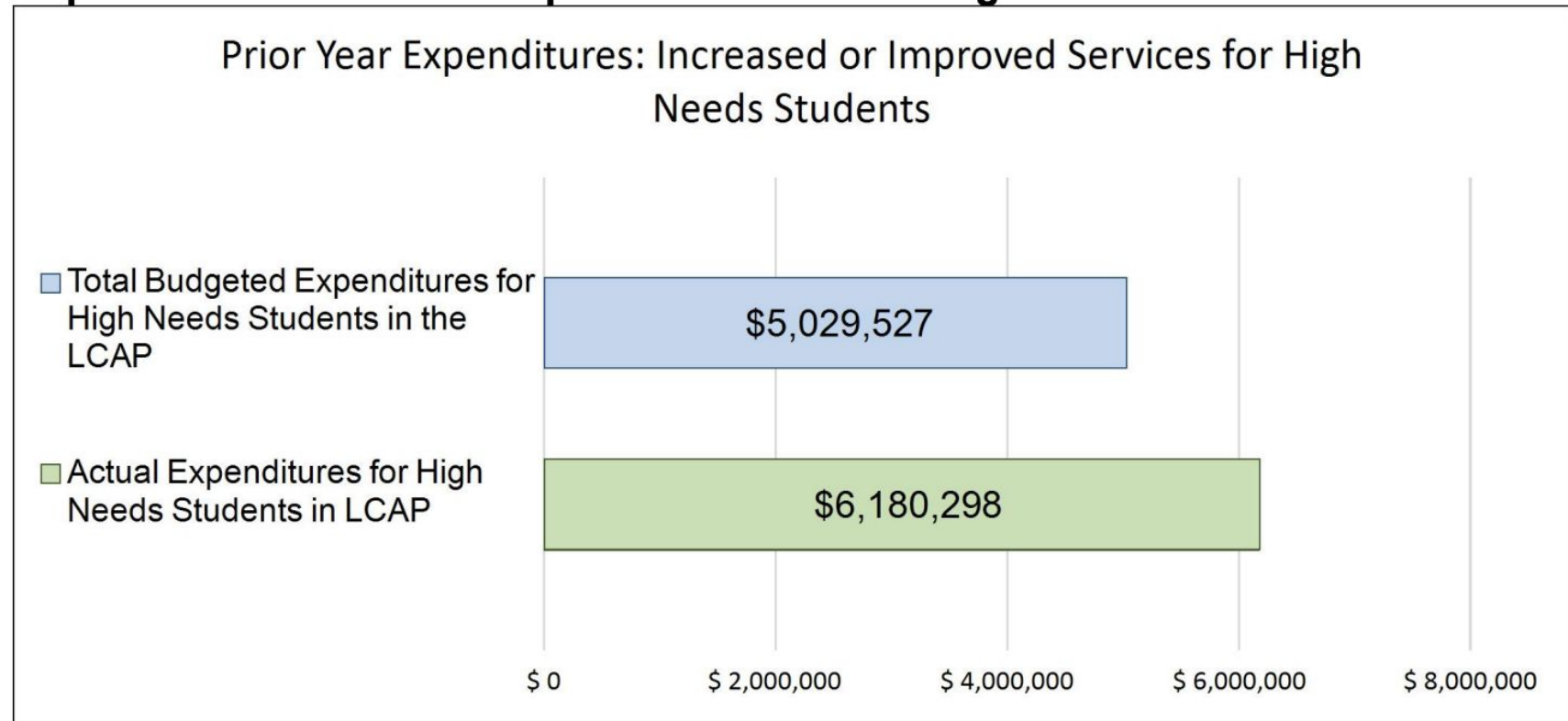
This chart shows the total general purpose revenue Santa Monica-Malibu Unified School District expects to receive in the coming year from all sources.

Budgeted Expenditures in LCAP



This chart provides a quick summary of how much Santa Monica-Malibu Unified School District plans to spend for 2023-24. It shows how much of the total is tied to planned actions and services in the LCAP.

Increased or Improved Services for High Needs Students



This chart compares what Santa Monica-Malibu Unified School District budgeted last year in the LCAP for actions and services that contribute to increasing or improving services for high needs students with what Santa Monica-Malibu Unified School District estimates it has spent on actions and services that contribute to increasing or improving services for high needs students in the current year.

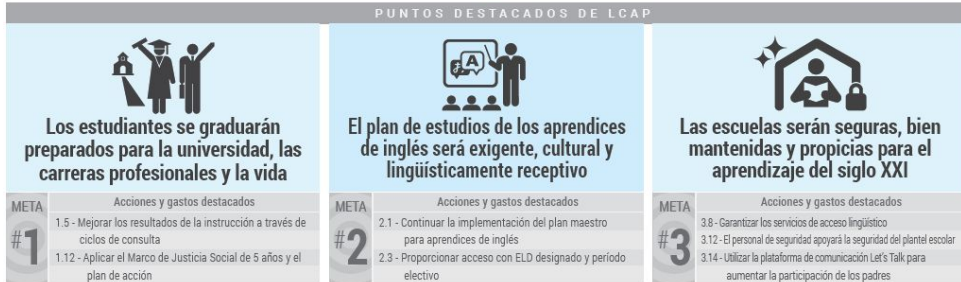
2023-24 LCAP Infographics

Distrito Escolar Unificado de Santa Mónica-Malibú

Plan de Control Local y Rendición de Cuentas



Resumen del plan, 2022-23



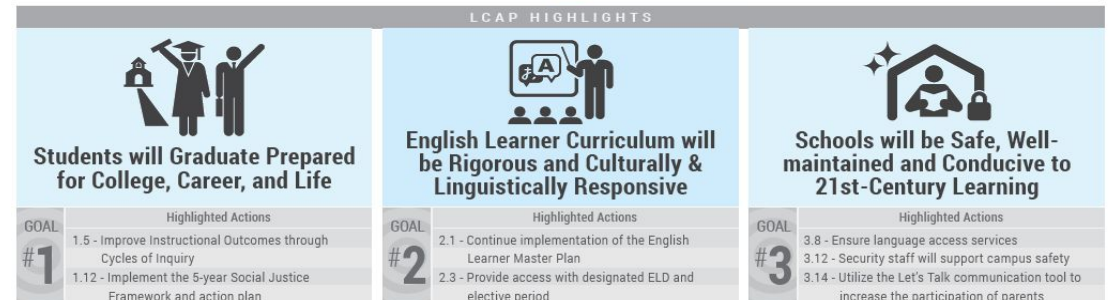
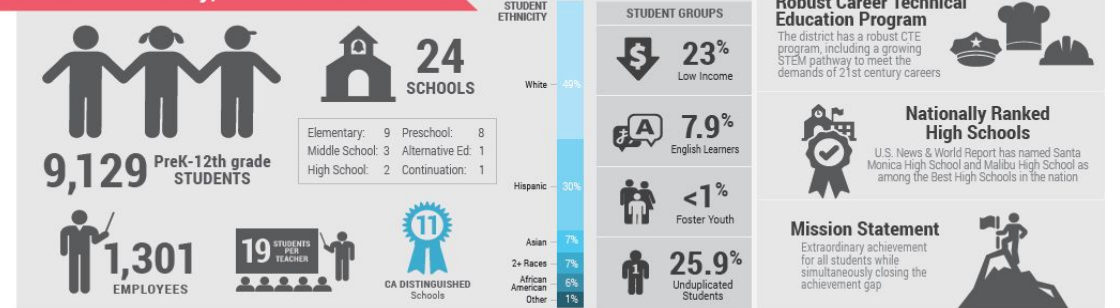
©2022 solutions@gobainfo.com (888) 938-7779

Santa Monica-Malibu Unified School District

Local Control and Accountability Plan



Plan Summary, 2022-23



©2022 solutions@gobainfo.com (888) 938-7779



Where Do I Access the LCAP

- SMMUSD Website

- Under Department
- Select Educational Services
- On left hand menu select LCAP

Or

- LCAP Webpage



Thank you for your time

■ Next Meeting

- Date: November 14, 2023
- Time: 4:00 – 6:00
- Location: Zoom
- Topic: 2022-23 Lag Data and 2023-24 Lead Data Review