

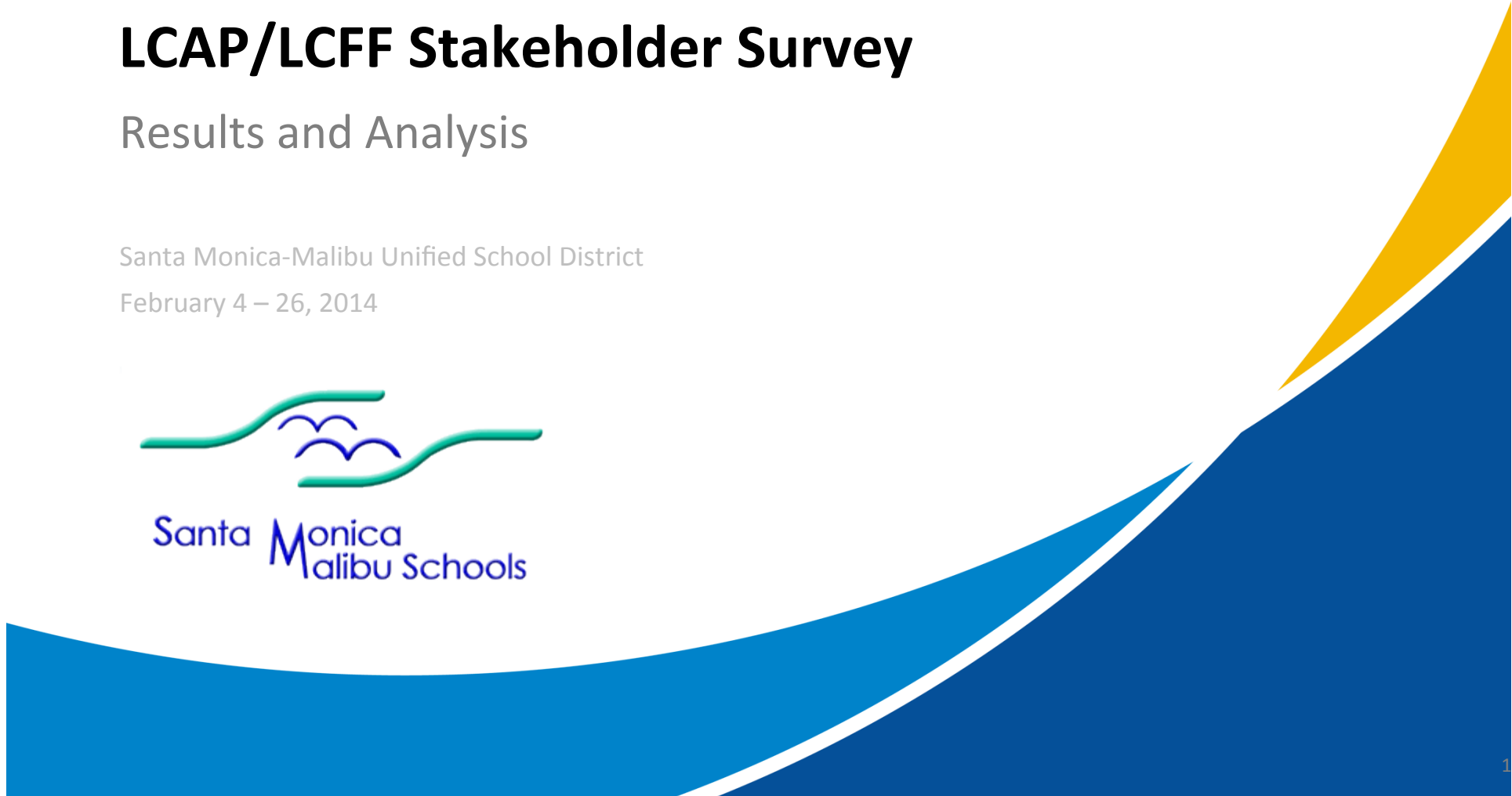
# LCAP/LCFF Stakeholder Survey

## Results and Analysis

Santa Monica-Malibu Unified School District  
February 4 – 26, 2014



Santa **M**onica  
Malibu Schools



# Overview

---

Under California's new Local Control Funding Formula (LCFF), Santa Monica-Malibu Unified School District must create a Local Control and Accountability Plan (LCAP) in conjunction with community members.

Stakeholders were invited to complete the SMMUSD LCAP/LCFF Survey, which was open to participation February 4 – 26, 2014. Participants were emailed invitations to take the survey, and also had the option to take the survey through a link on the district's website. Feedback provided by stakeholders will help SMMUSD make decisions and plan for programs and services that best reflect the needs of their students and community.

# Technical Notes

---

- Data labels for percentages of 5% or less are not shown.
- All questions were voluntary.
- The survey was available in English and Spanish.
- This is a “census” survey administration. Results reflect the views of survey participants and do not necessarily represent the views of non-respondents.

# Participation

---

Respondent Group	Number of Responses via Emailed Invitation	Number of Responses via Public Access URL	Total
SMMUSD Stakeholders	553	377	930

There were 4 Spanish surveys completed.

A reminder email was sent on 2/24.

# LCAP Explained

---

The Local Control and Accountability Plan (LCAP) requires the school district to set goals in eight specific areas that serve as key ingredients to a high-quality educational program.

The eight areas are:

- Student Achievement
- Student Engagement
- Parental Involvement
- School Climate
- Basic Services
- Course Access
- Implementation of Common Core State Standards
- Other Student Outcomes

The LCAP must include district-wide goals, as well as goals for several student subgroups, each of which is comprised of at least 30 students.

Student subgroups include:

- Racial/Ethnic Subgroups: Black or African American; American Indian or Alaska Native; Asian; Filipino; Hispanic or Latino; Native Hawaiian or Pacific Islander; White; and Multi-Racial (Two or more races)
- Other Subgroups: Socioeconomically disadvantaged students, English learners, students with disabilities and foster youth

The district must specify actions they will take to achieve their stated goals and must seek input from parents, employees and students during LCAP development.

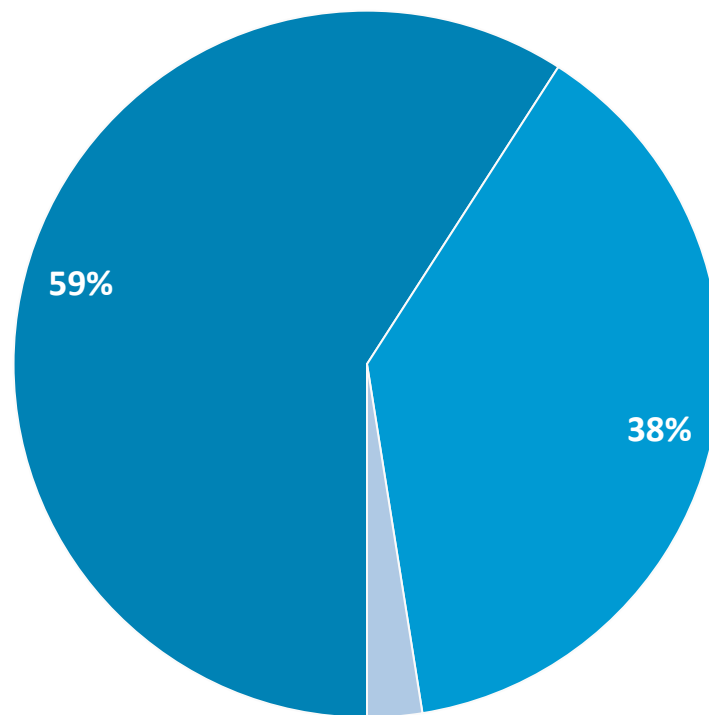
The district must have a Parent Advisory Committee review their proposed LCAP. Additionally, the public is encouraged to submit written comments regarding the LCAP's actions and proposed expenditures.

# Understanding LCAP Requirements

---

97% of participants Completely Understand or Somewhat Understand the LCAP Requirements.

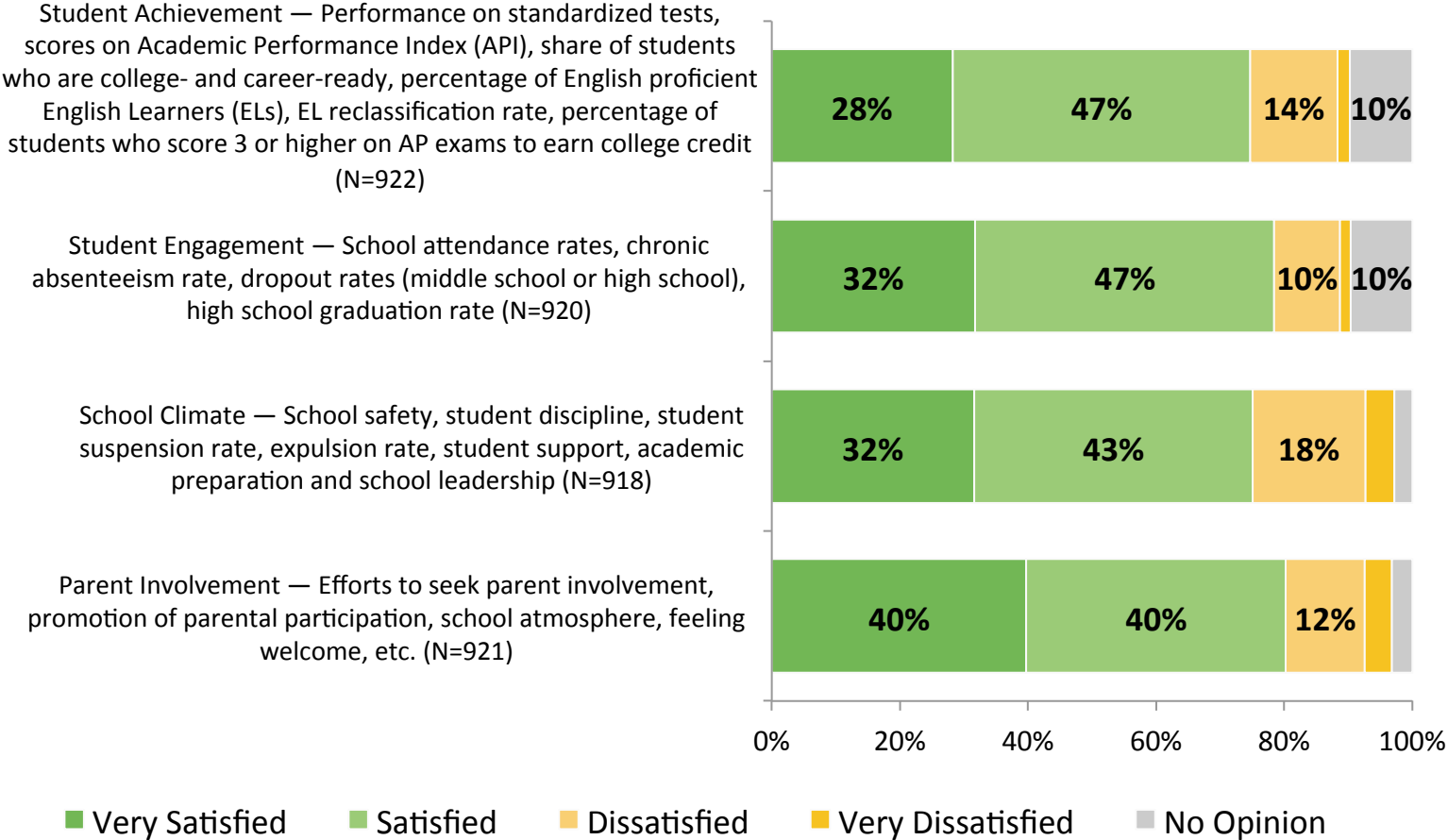
Given this information (Slide 5), how well do you understand the LCAP requirements? (N=917)



■ Completely Understand   ■ Somewhat Understand   ■ Do Not Understand

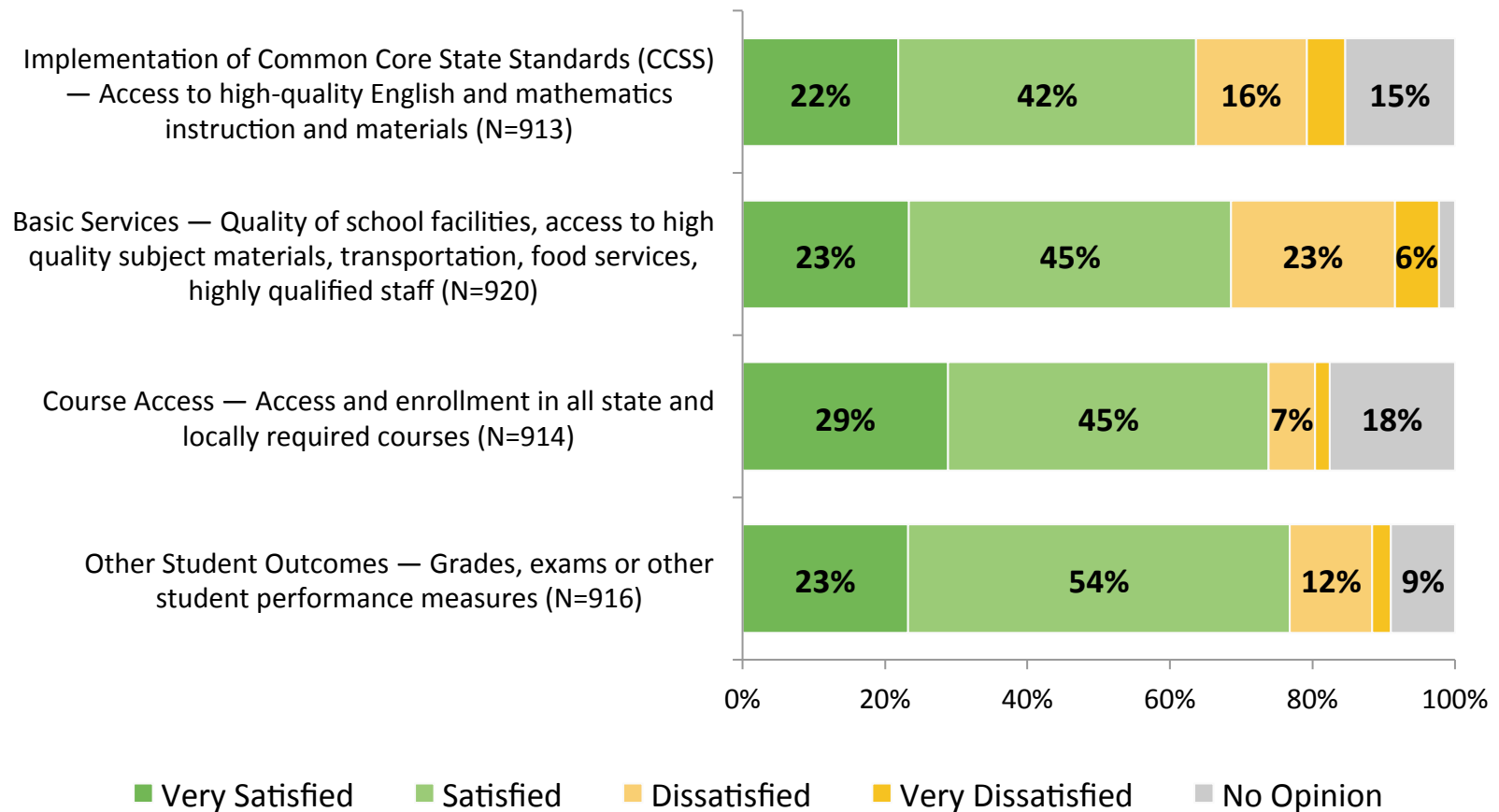
# Level of Satisfaction with State-Identified Topics

Please tell us your level of satisfaction with each topic as it relates to your experiences.



# Level of Satisfaction with State-Identified Topics (Continued)

Please tell us your level of satisfaction with each topic as it relates to your experiences.





# LCFF/LCAP Priorities

---

Please rank the top five LCFF/LCAP priorities in need of attention. (N=912)

Priority	Relative Weighted Score	Overall Rank
Student Achievement	100	1
Student Engagement	94	2
School Climate	82	3
Implementation of Common Core State Standards (CCSS)	53	4
Basic Services	48	5
Parent Involvement	42	6
Course Access	28	7
Other Student Outcomes	15	8

# Funding Components of the LCFF Explained

---

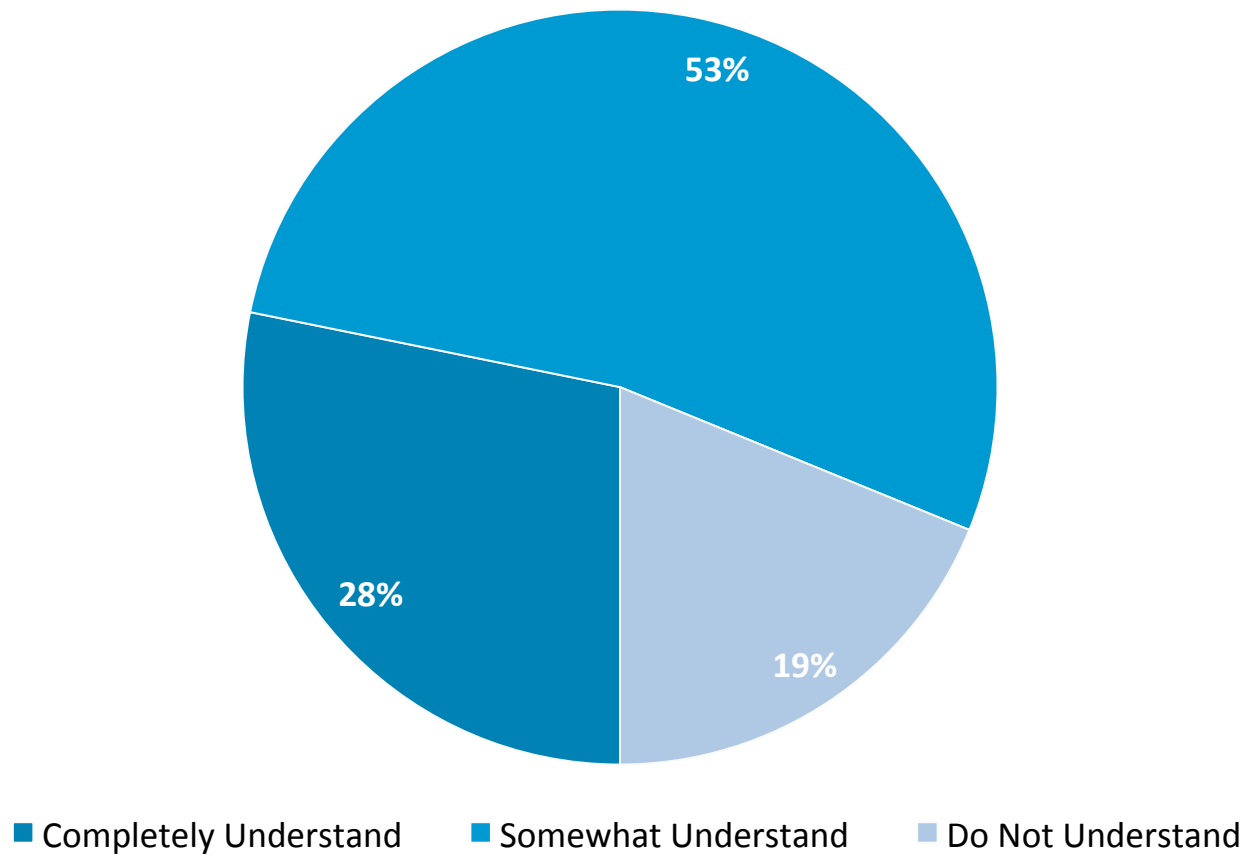
Beginning in the 2014-2015 school year, the way in which California funds public education will change significantly. Key funding components are listed below:

- \* Target Base Rates (per average daily attendance)
  - K-3: \$6,845
  - 4-6: \$6,947
  - 7-8: \$7,154
  - 9-12: \$8,289
  
- \* Base Rate Adjustments
  - K-3: 10.4% of base rate
  - 9-12: 2.6% of base rate
  
- \* Supplemental Funding for Certain Student Subgroups (per English Learner (EL)/Low-Income (LI) Students and Foster Youth)
  - 20% of adjusted base rate
  
- \* Concentration Funding
  - Each EL/LI student above 55% of enrollment generates an additional 50% of adjusted base rate

# Funding Components of the LCFF (Continued)

81% of participants Completely Understand or Somewhat Understand the LCAP funding components.

How well do you understand the funding components of the LCFF? (N=919)

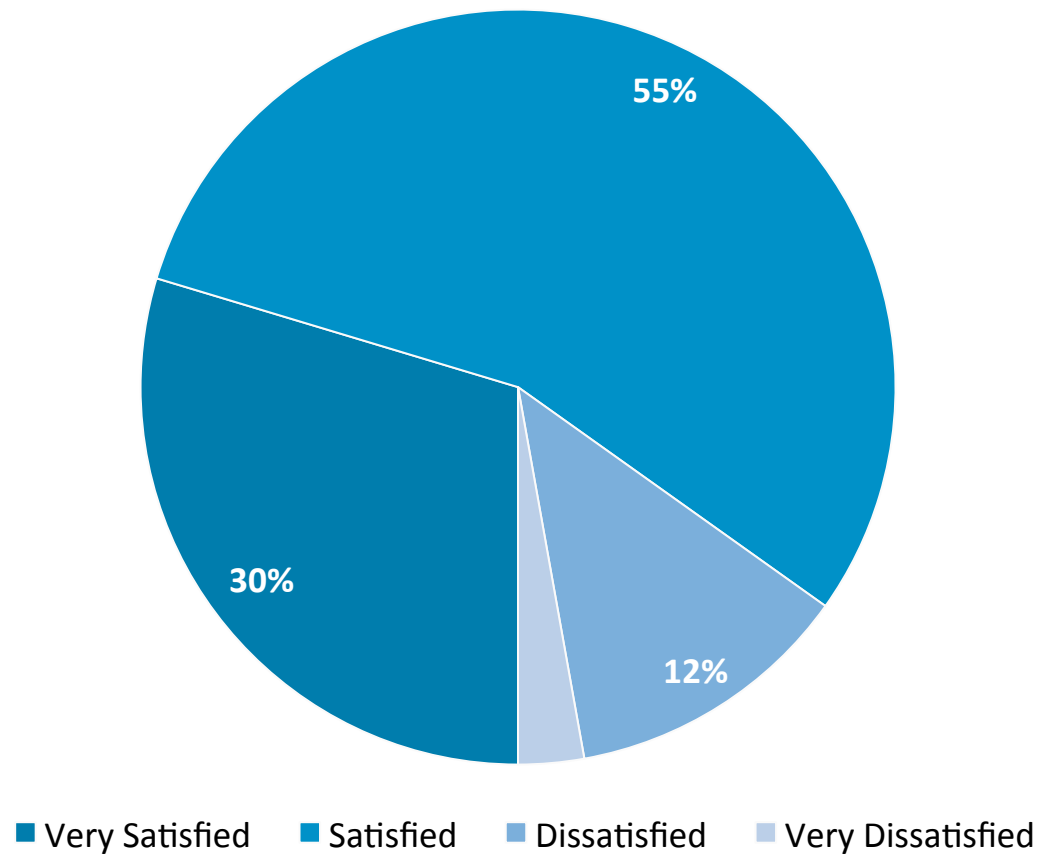


# Quality

---

**85% of participants are Very Satisfied or Satisfied with the quality of SMMUSD.**

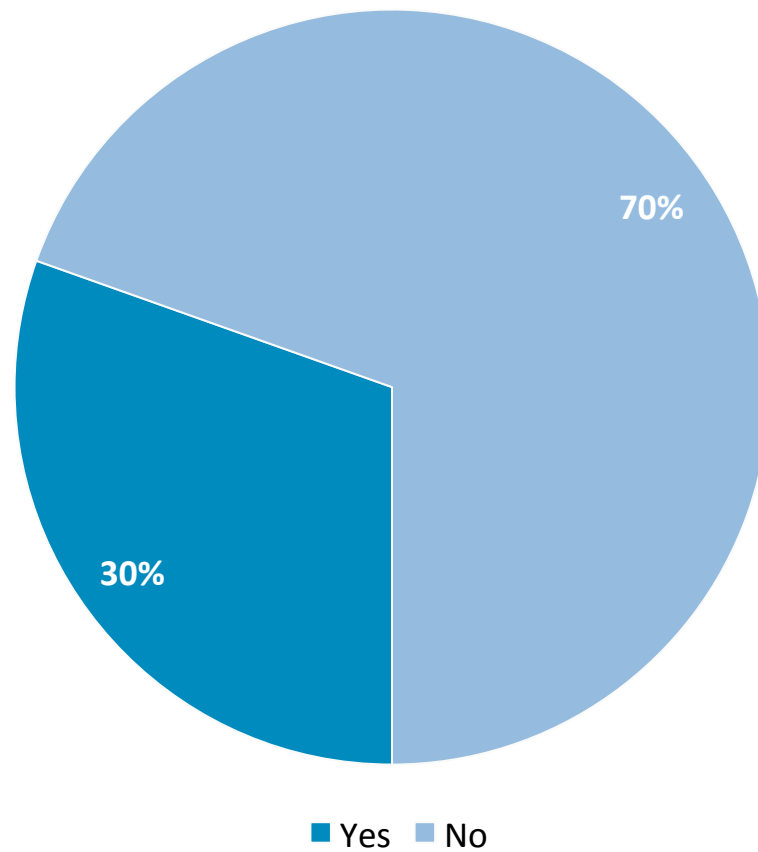
Overall, how satisfied are you with the quality of Santa Monica-Malibu Unified School District? (N=924)



# Additional LCFF/LCAP Information

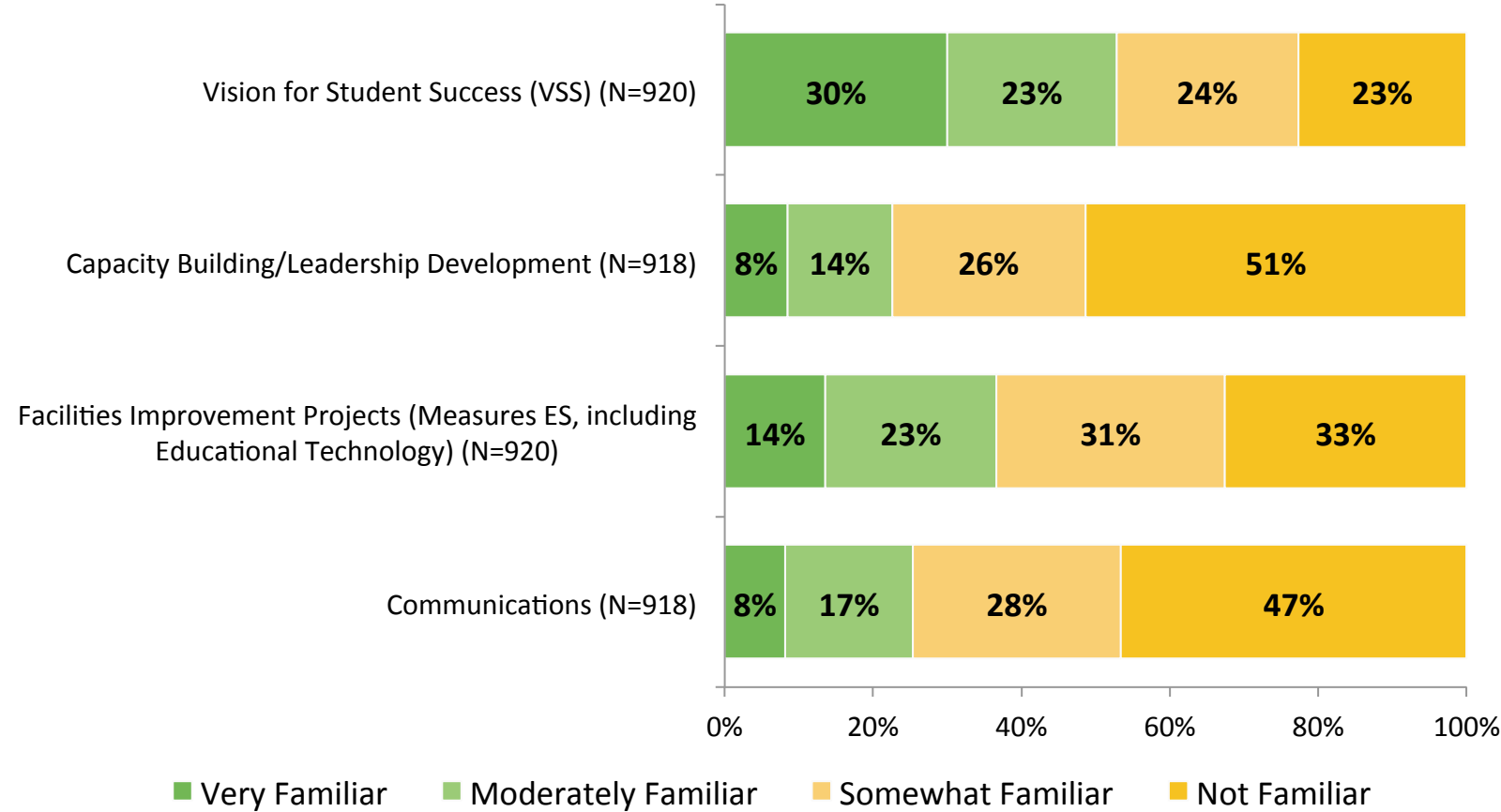
---

Would you like to receive more information about LCFF/LCAP? (N=920)



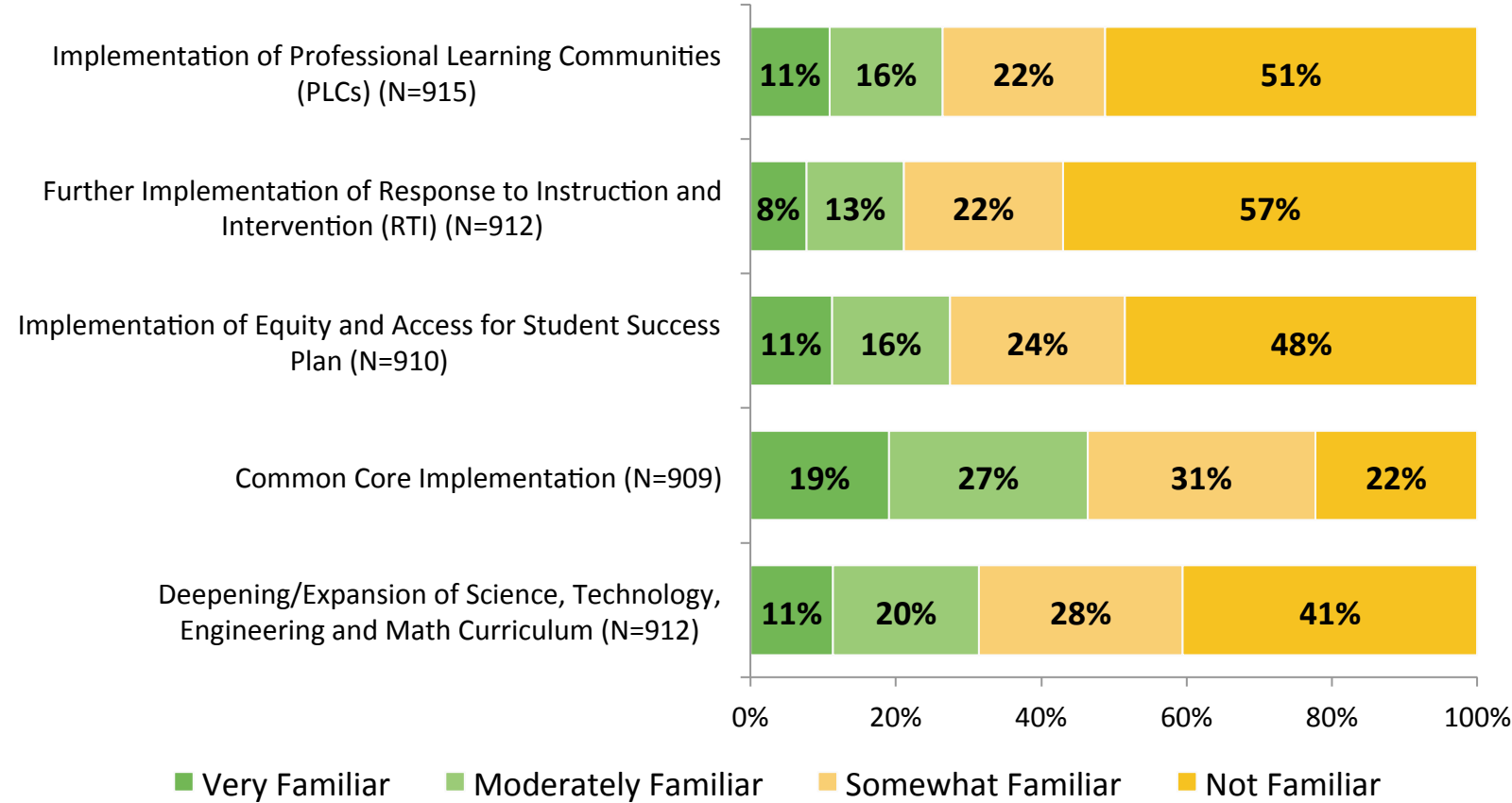
# Familiarity with School Board's Goal Areas

Before today, how familiar were you with the Board's four goal areas?



# Familiarity with Superintendent's Goal Areas

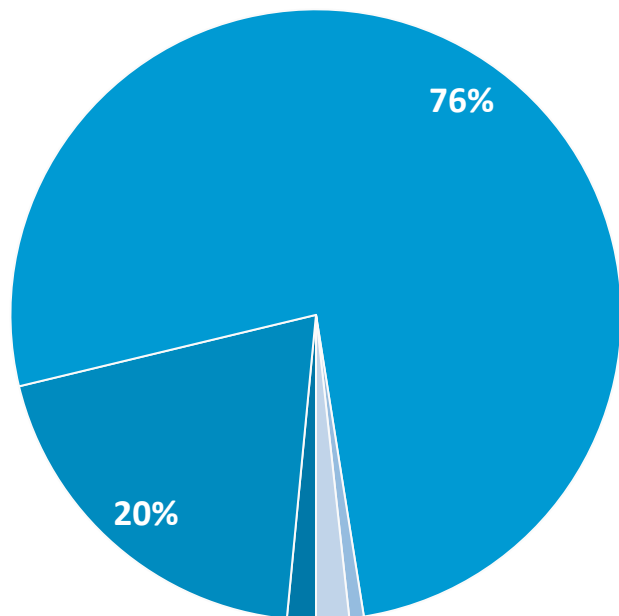
Before today, how familiar were you with the Superintendent's five goal areas?



# Affiliation

96% of participants identified as Employees or Parents.

What is your primary affiliation with SMMUSD? (N=918)



- Community Member
- Employee
- Parent
- Student
- Other

Affiliation	Count (N)	Percent (%)
Community Member	14	2%
Employee	181	20%
Parent	700	76%
Student	7	1%
Other	16	2%

Note: "Other" responses included those who identified as more than one of the available answer options



# Services

---

Which of the following services does your child receive?

Service	Count (N)	Percentage (%)
Disability Accommodations (504 Plan)	38	4%
English Learner Program	10	1%
Free or Reduced-Priced Meals Program	32	4%
Special Education (IEP)	76	9%
None of the above	726	84%

*Note: The sum of percentages may exceed 100% because participants could select more than one response option.*

# Conclusions

---

- Overall, parents are satisfied with the SMMUSD
- Generally, parents are not familiar with the Board of Education's four goals, including the Vision for Student Success
- Generally, parents are not familiar with the Superintendent's five goals
- 18% of parents are dissatisfied with the state priority School Climate (safety, discipline, school leadership, etc.)
- 80% of parents were either very satisfied or satisfied with the state priority Parent Involvement
- 29% of parents are dissatisfied or very dissatisfied with the state priority Basic Services (Quality of school facilities, instructional materials, etc.)
- Share with superintendent, Cabinet and Board of Education
- Share with LCAP Committee
- Post on district LCAP page
- Need to improve marketing to have more parents respond in 2014-15 survey
- Need to review survey to include parent race/ethnicity and program participation of their children
- Need to revise the survey to include the various ways parents can be involved in their children's education (Consider using the state PTA rubric)



K12 *Insight* is a technology-based research and communications firm that helps school district leadership better engage in conversations with parents, teachers, staff, students and the general public on critical district issues.

K12 *Insight's* approach results in greater transparency and collaborative decision-making.

Watch our [Candid Conversations video](#), at <http://bit.ly/12m6z4x>, to learn more about how we work.