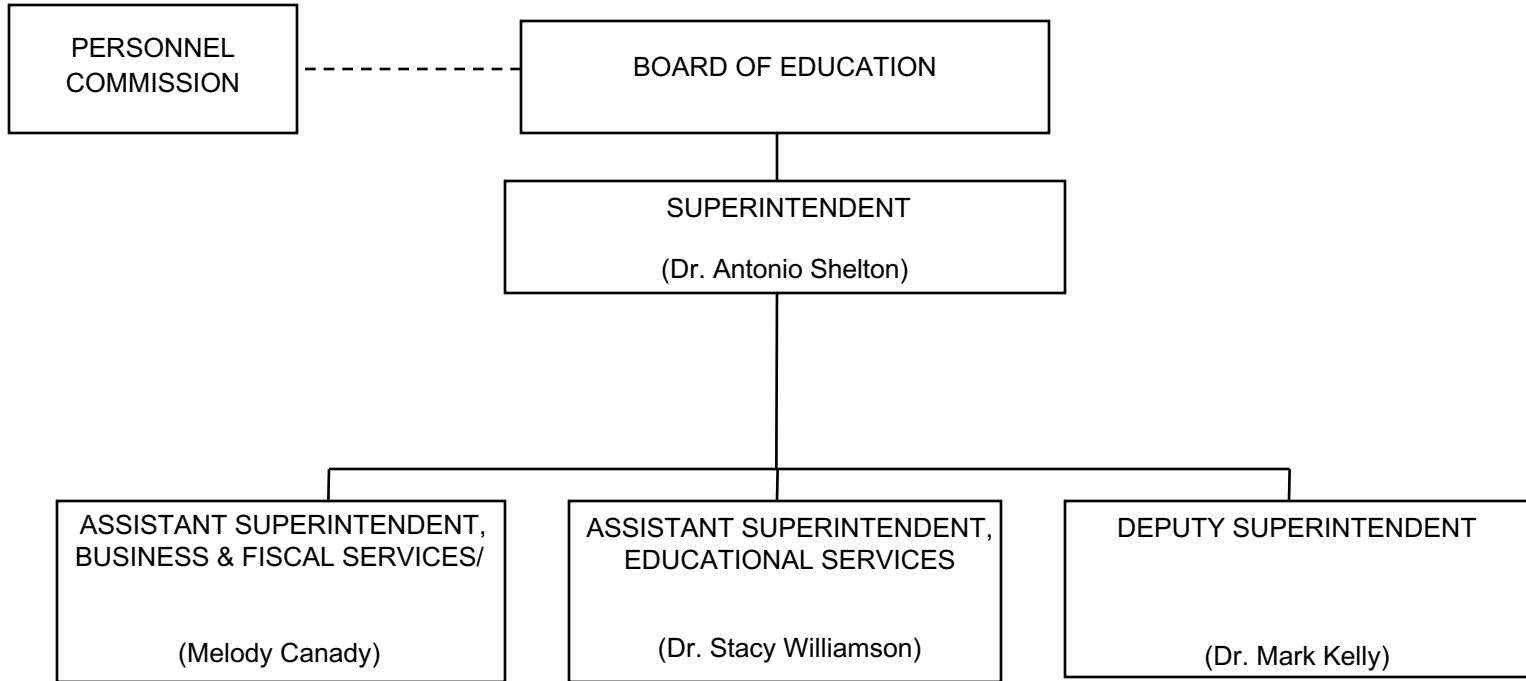


# DISTRICT ORGANIZATION



# BOARD OF EDUCATION

## **MEMBERS**

Jennifer Smith, President  
Jon Kean, Vice President  
Maria Leon-Vazquez  
Laurie Lieberman  
Alicia Mignano  
Stacy Rouse  
Richard Tahvildaran-Jesswein

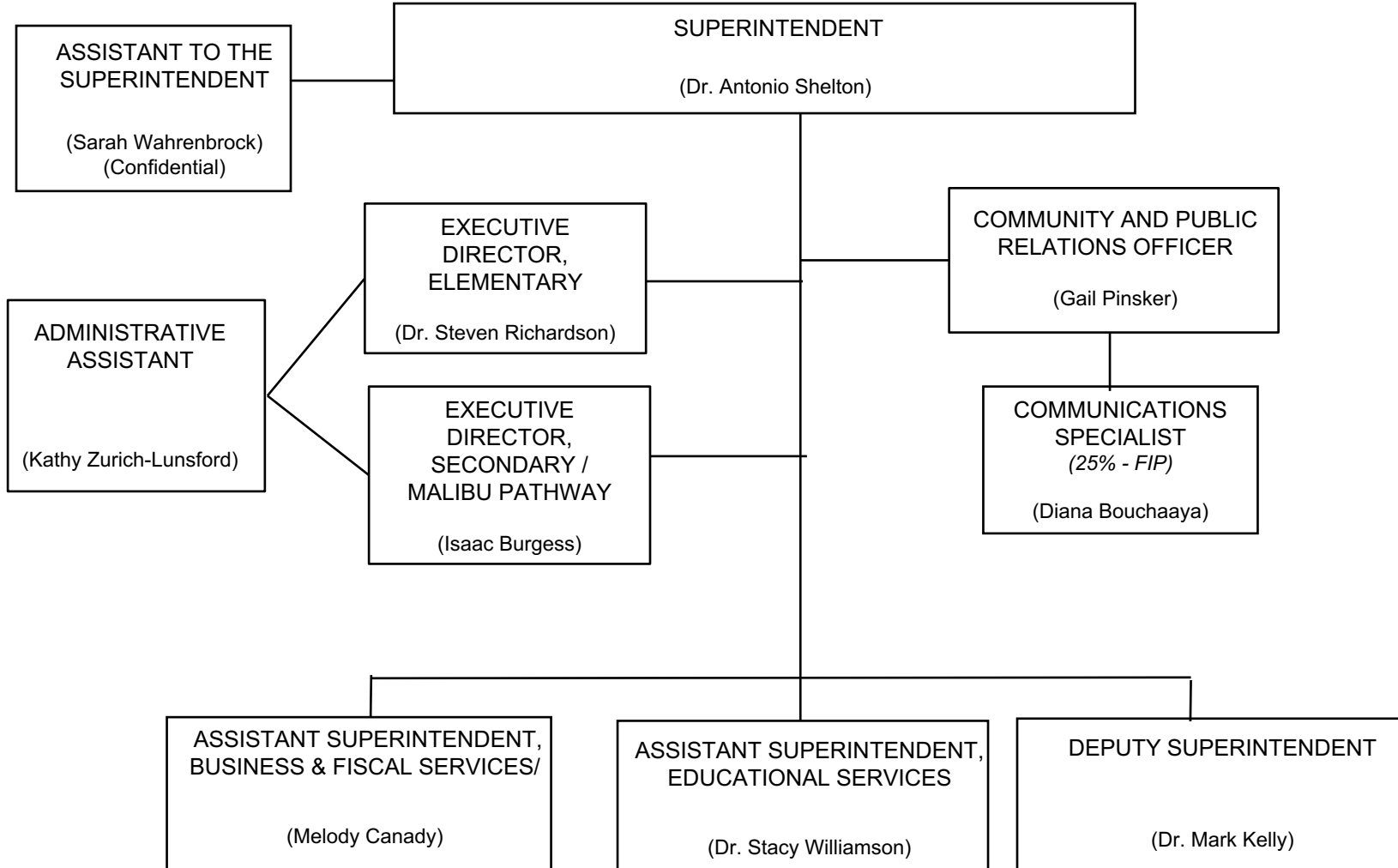
## **STUDENT MEMBERS**

Mira Wagabaza– Santa Monica HS  
Thomas Drummond – Malibu HS  
tbd – Olympic HS

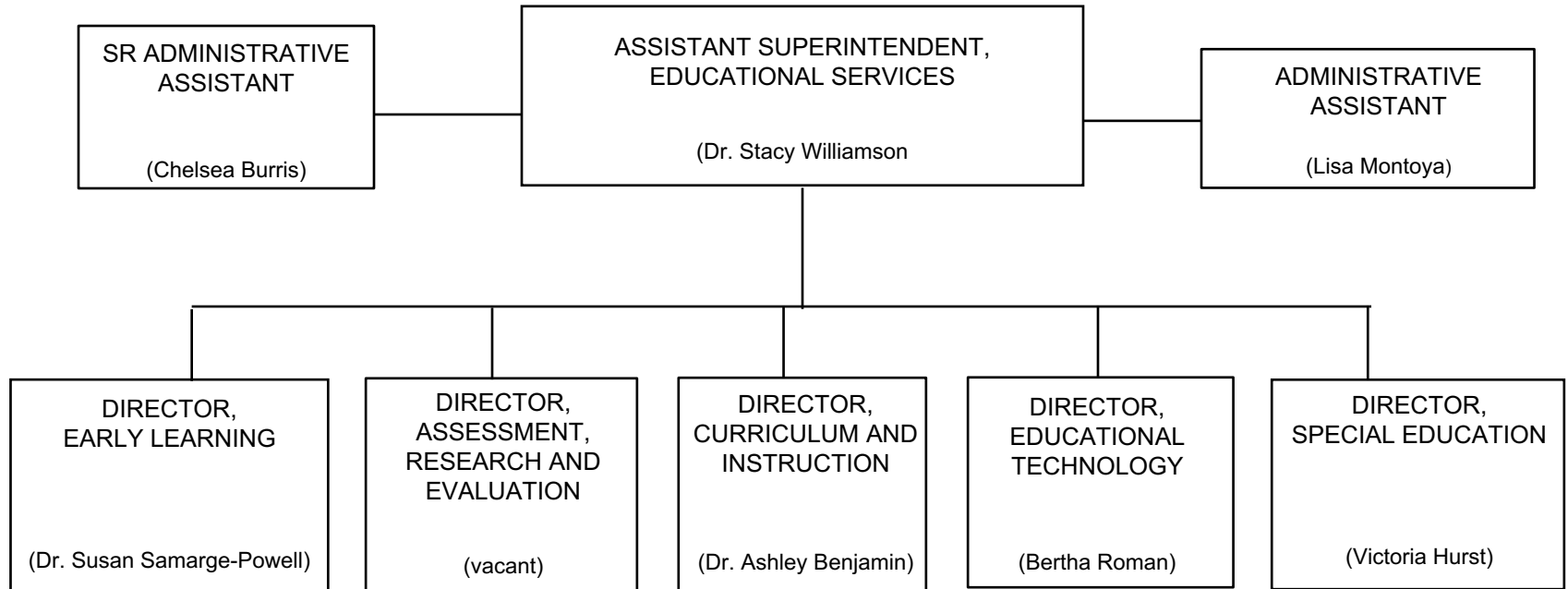
## **SUPERINTENDENT**

(Dr. Antonio Shelton)

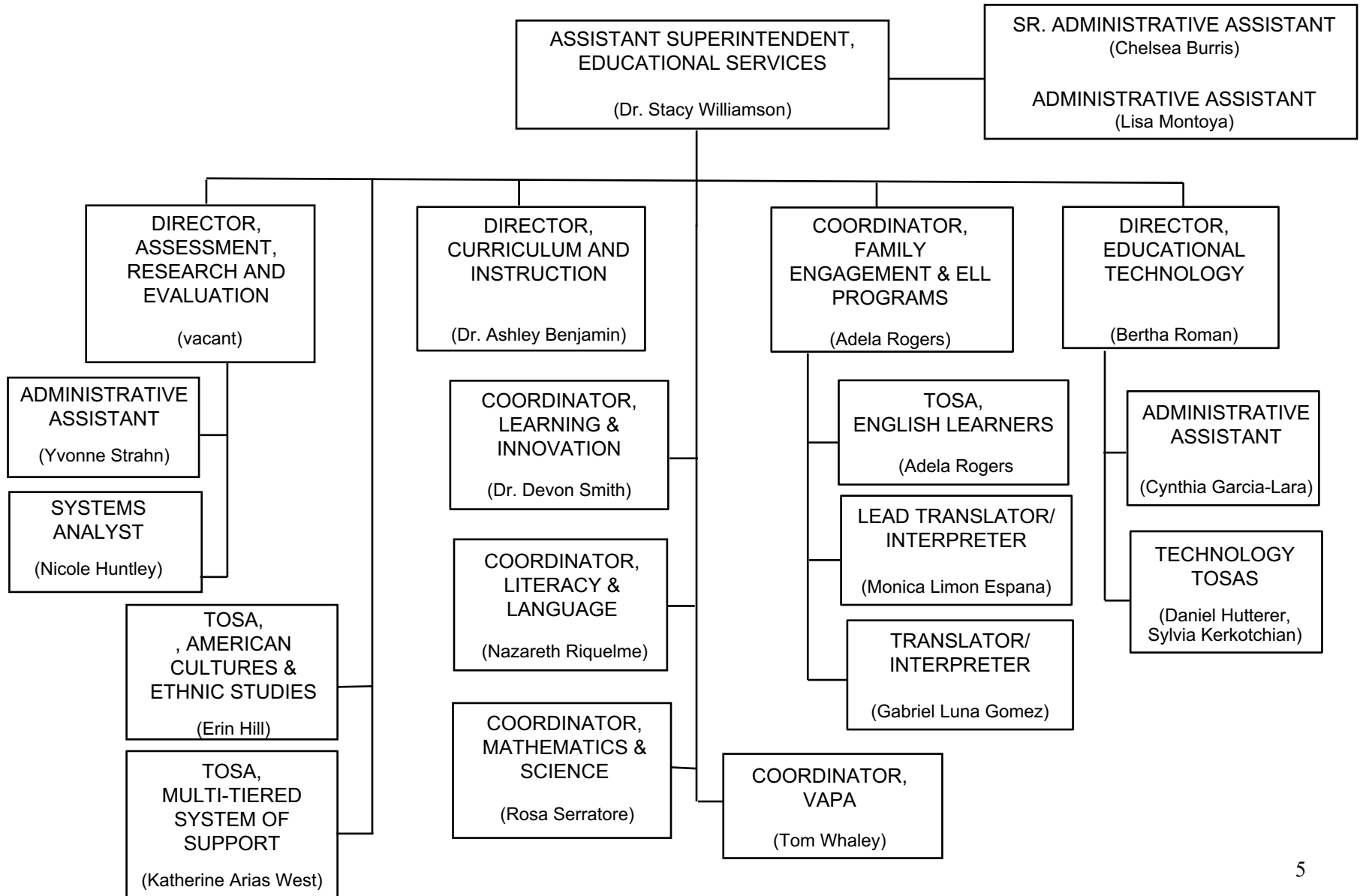
# SUPERINTENDENT



## EDUCATIONAL SERVICES DEPARTMENT

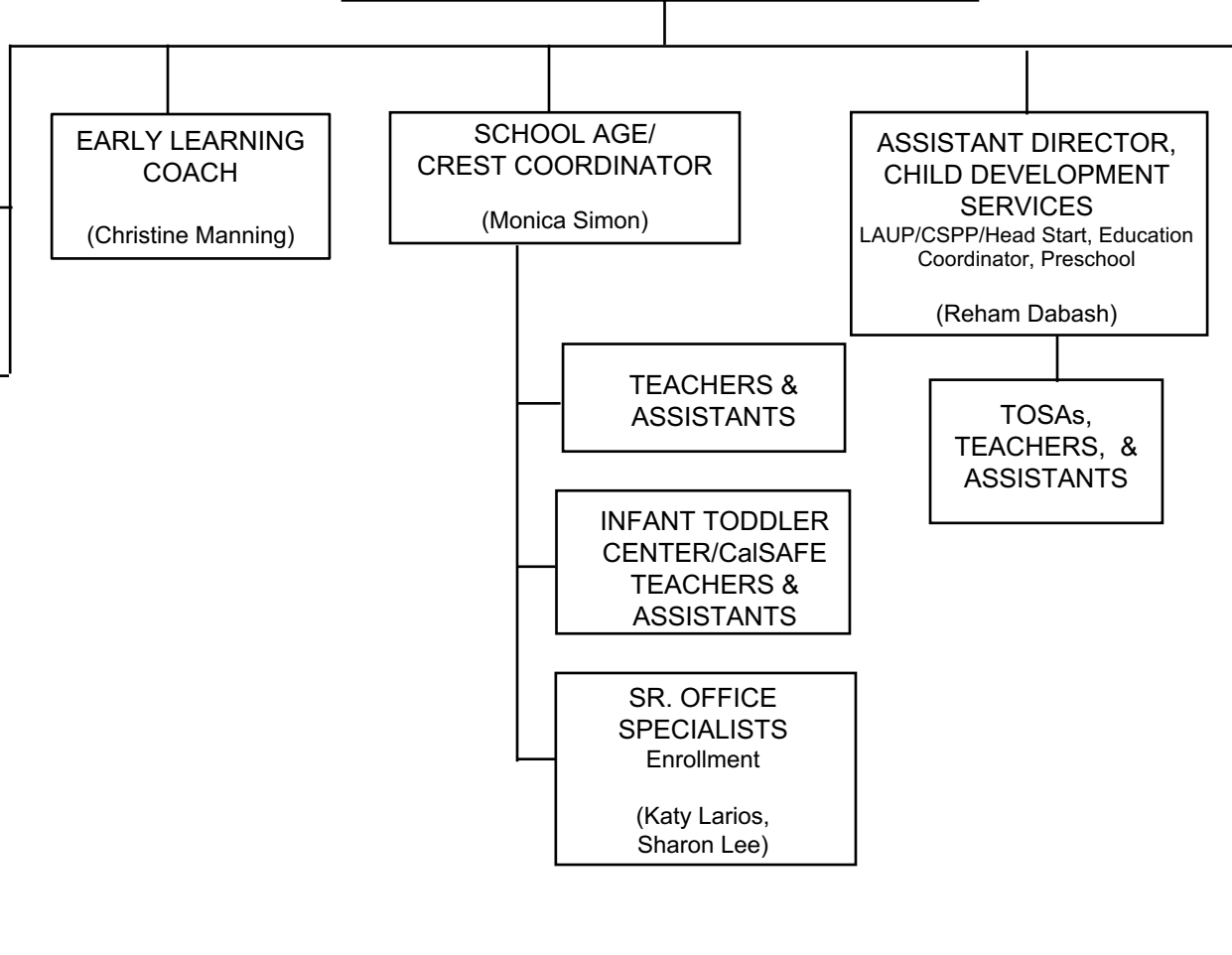


# EDUCATIONAL SERVICES

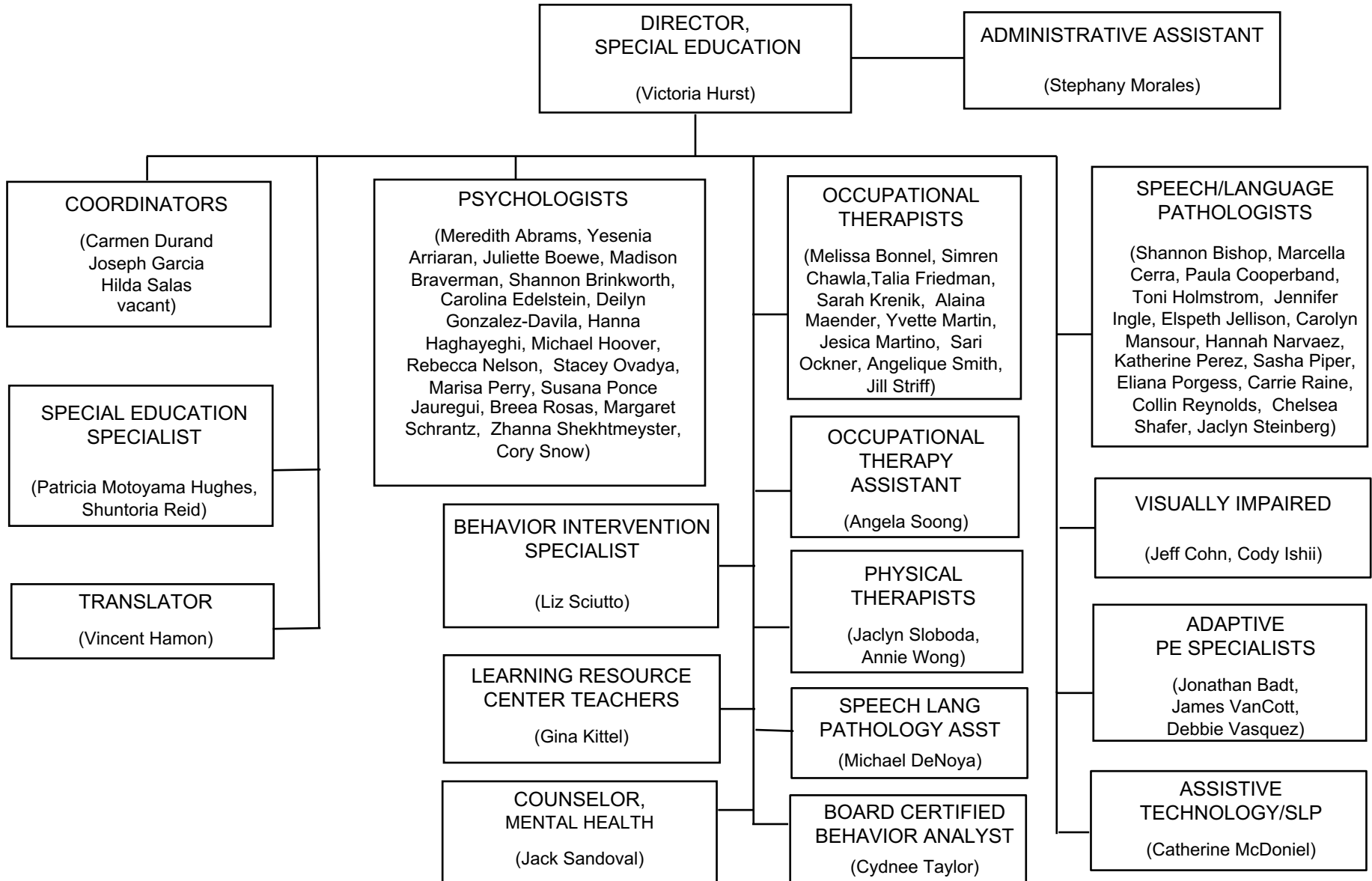


# CHILD DEVELOPMENT SERVICES

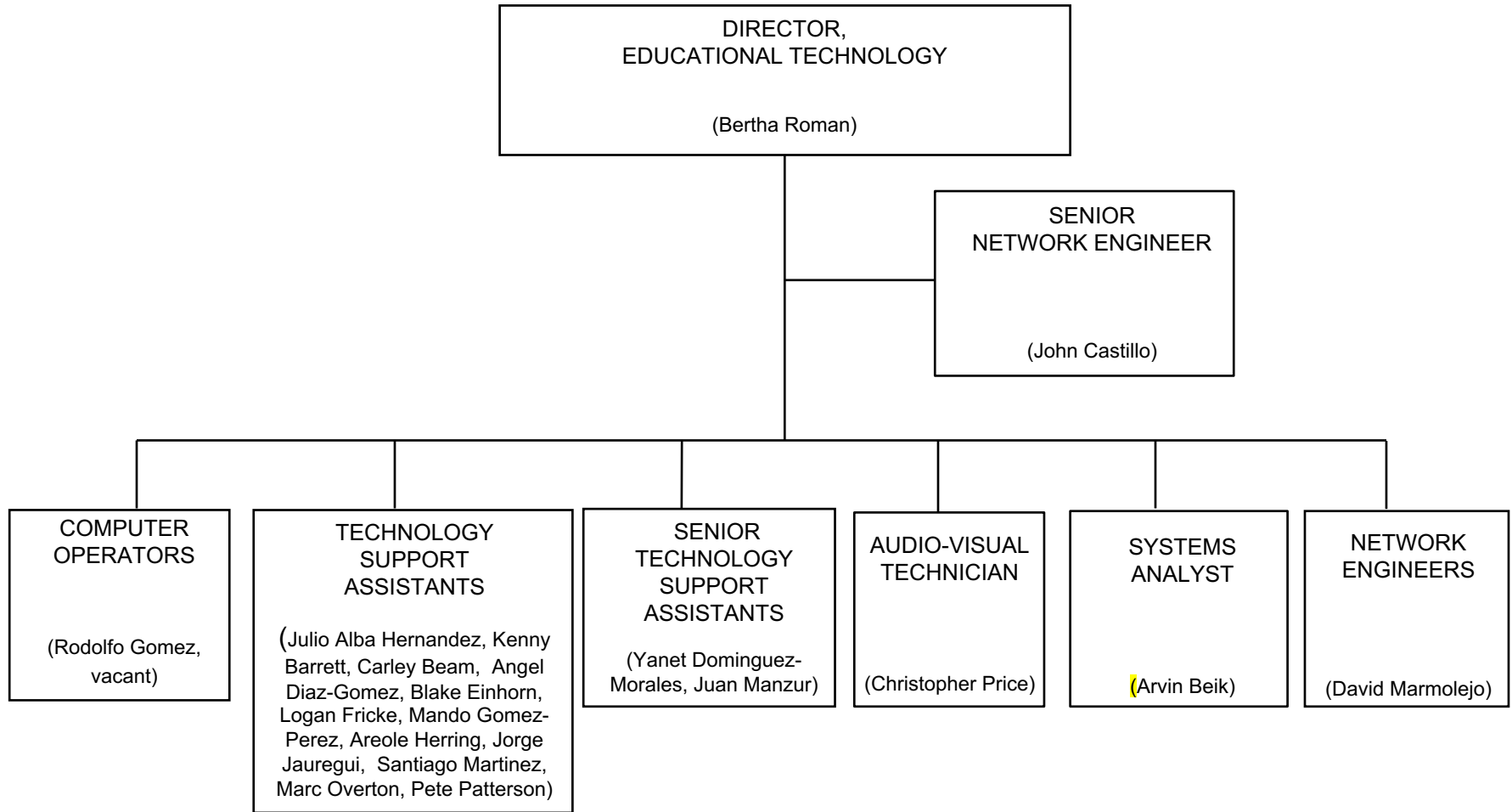
DIRECTOR, EARLY LEARNING  
(Dr. Susan Samarge-Powell)



# SPECIAL EDUCATION DEPARTMENT

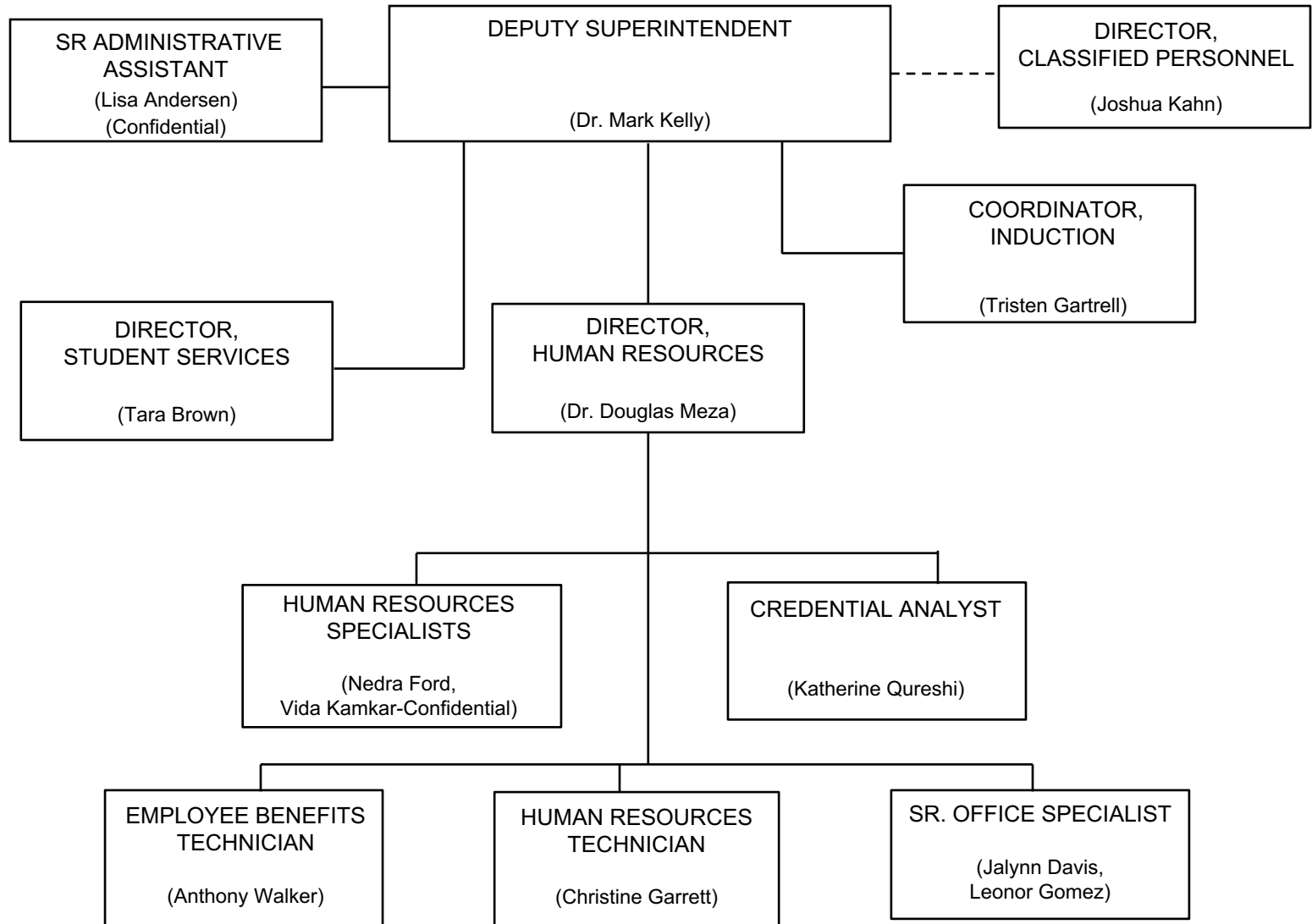


# EDUCATIONAL TECHNOLOGY SERVICES

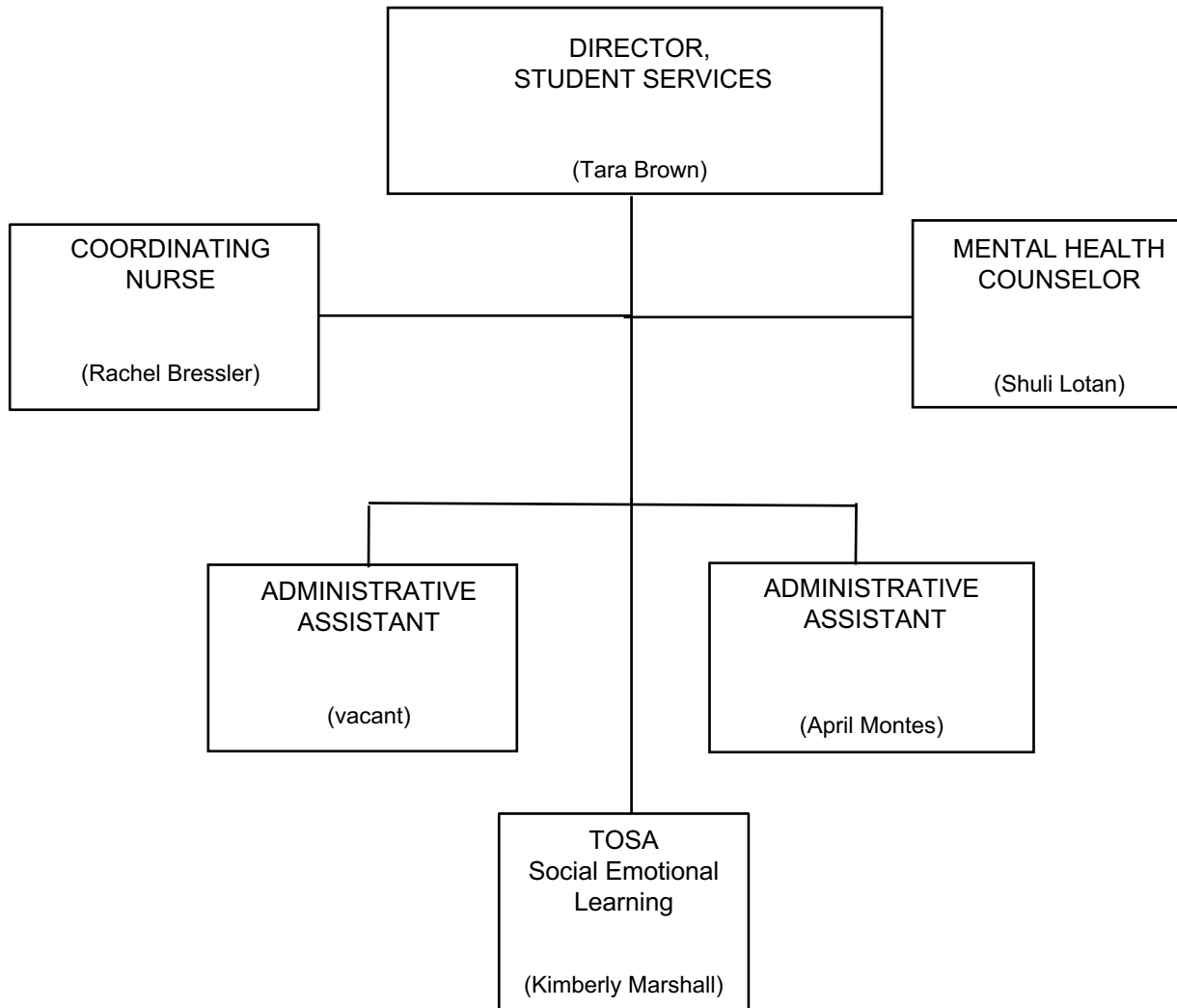




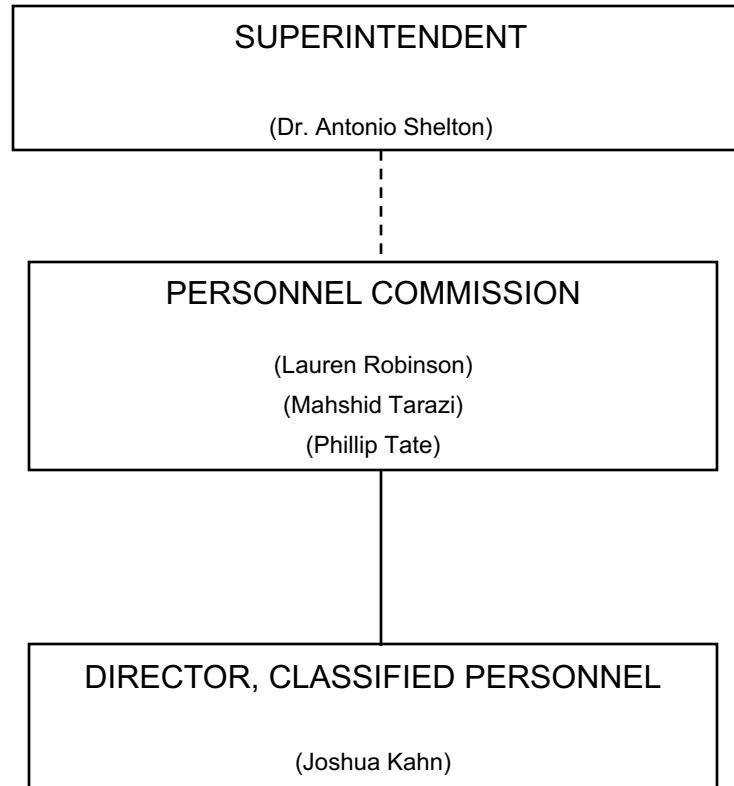
# HUMAN RESOURCES



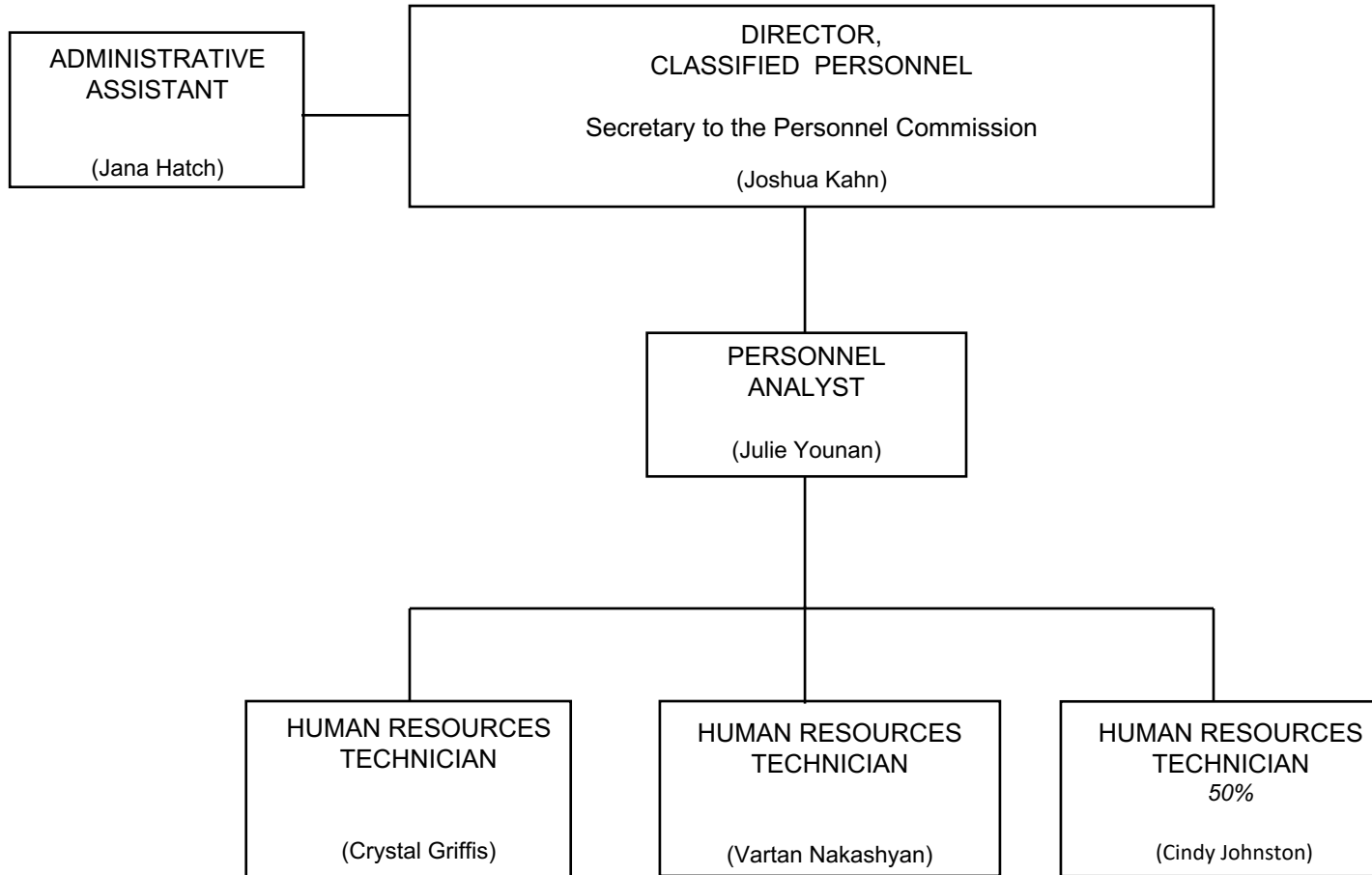
## STUDENT SERVICES DEPARTMENT



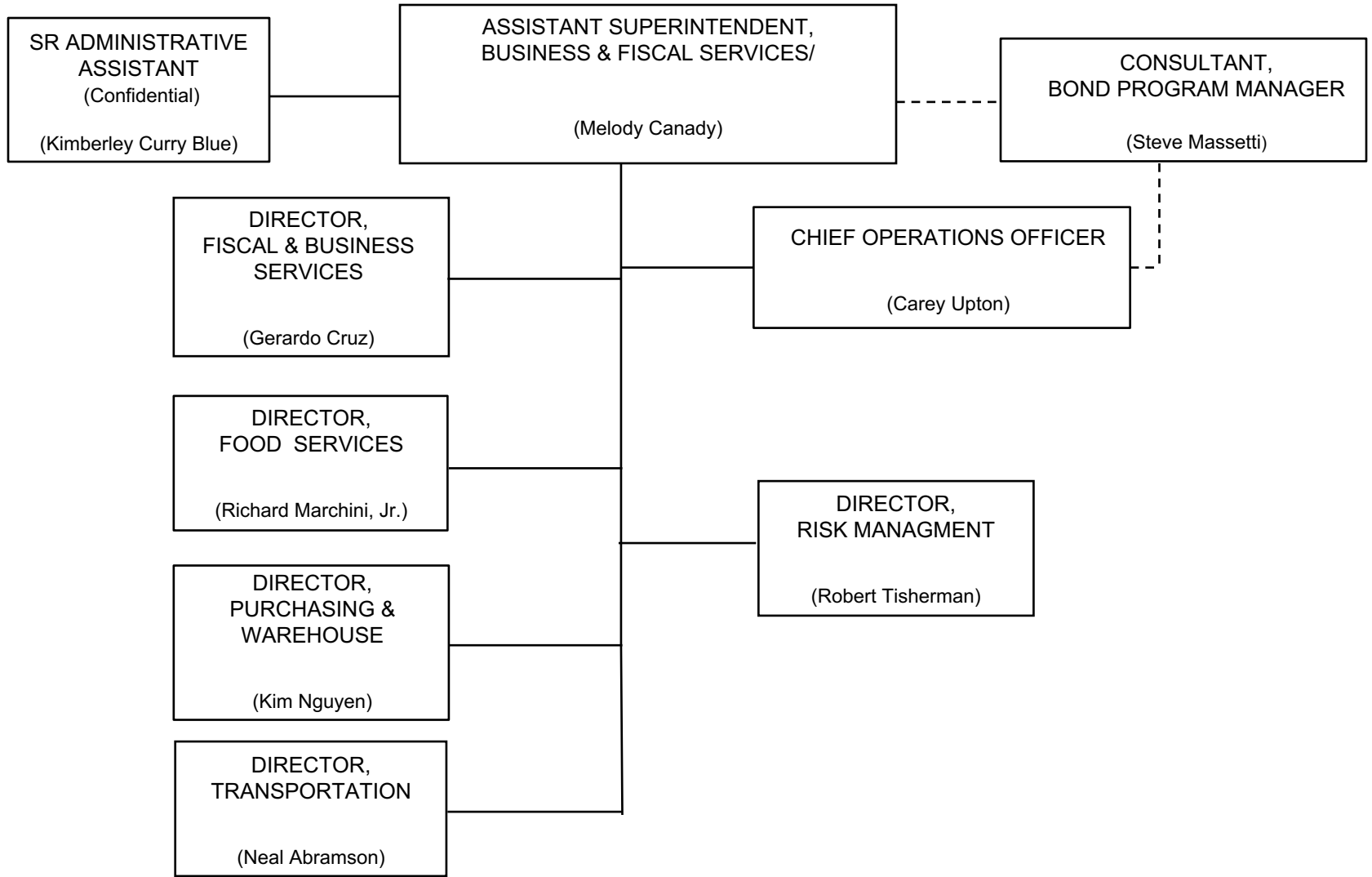
# PERSONNEL COMMISSION



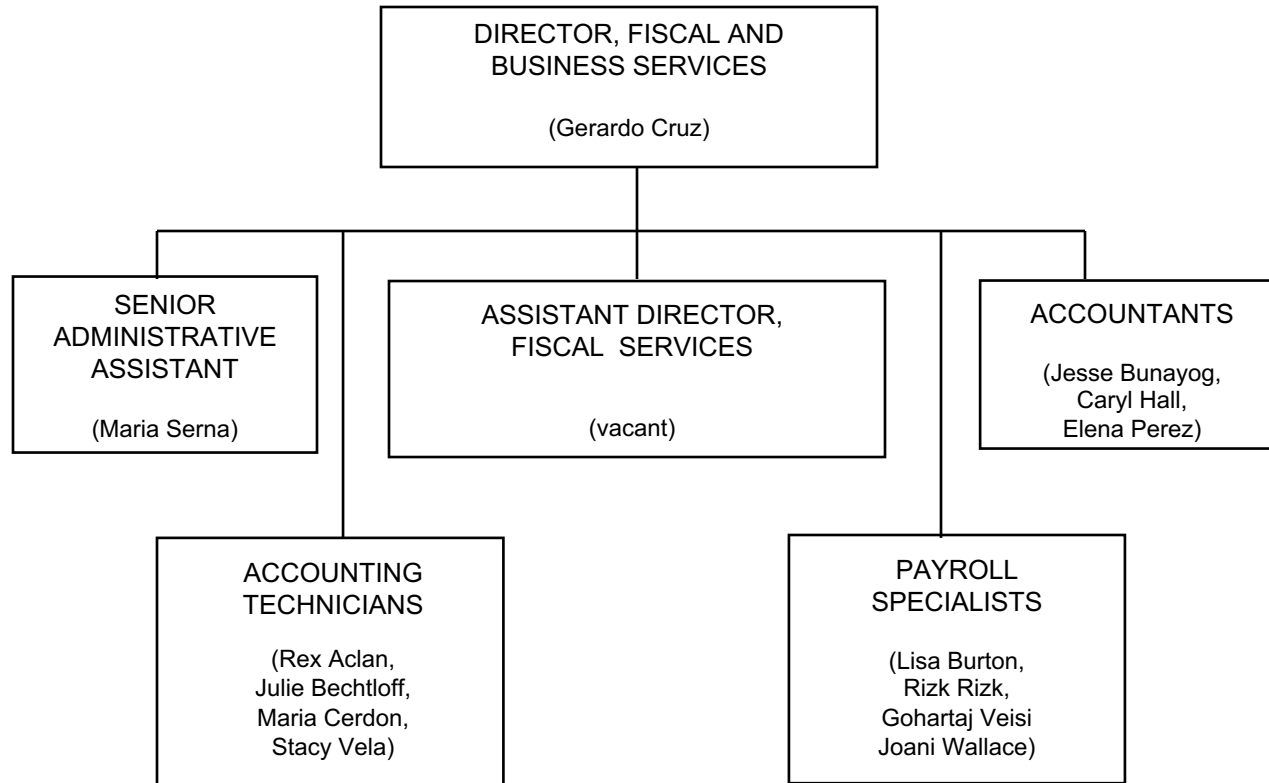
# PERSONNEL COMMISSION



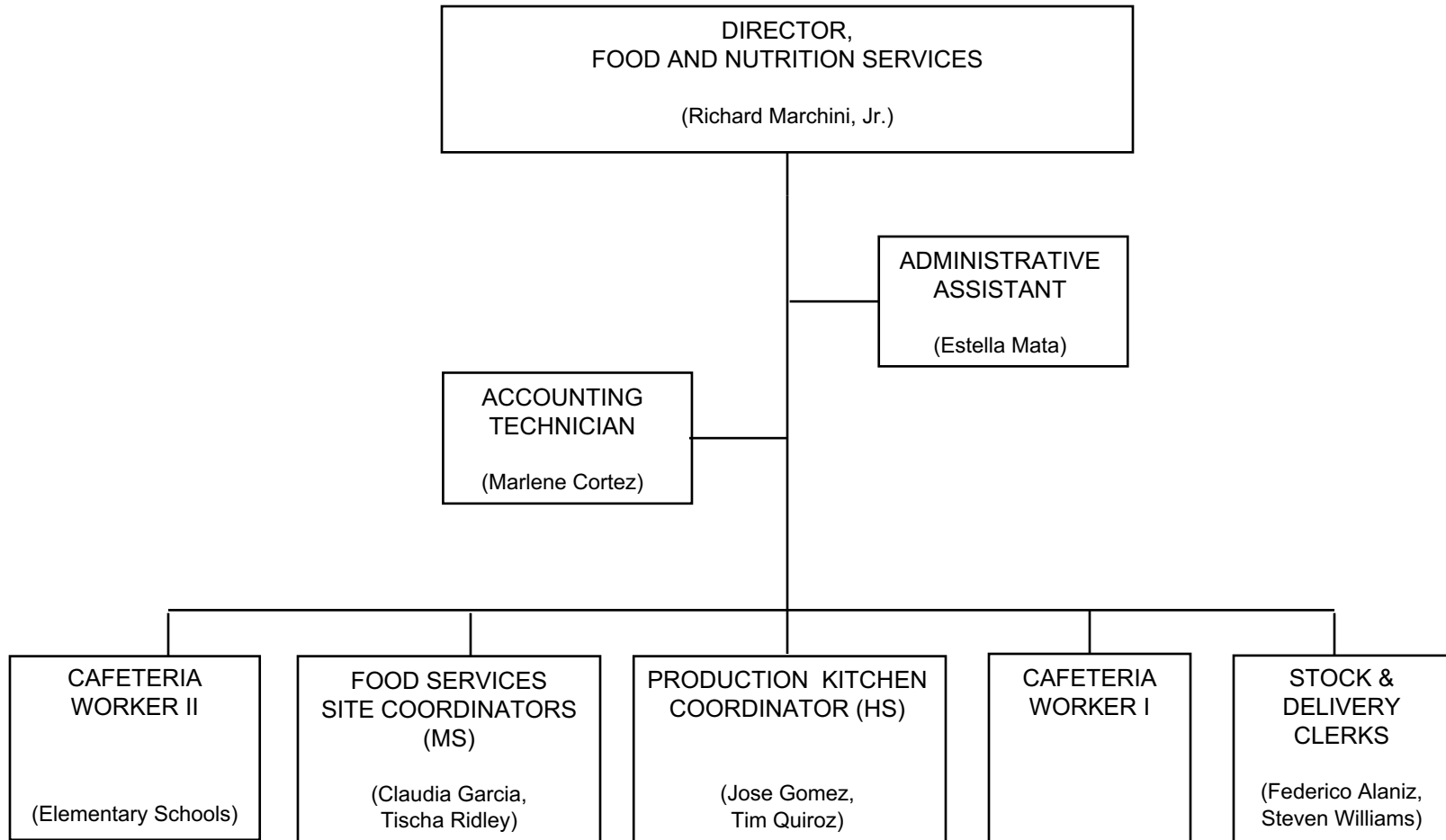
## BUSINESS AND FISCAL SERVICES



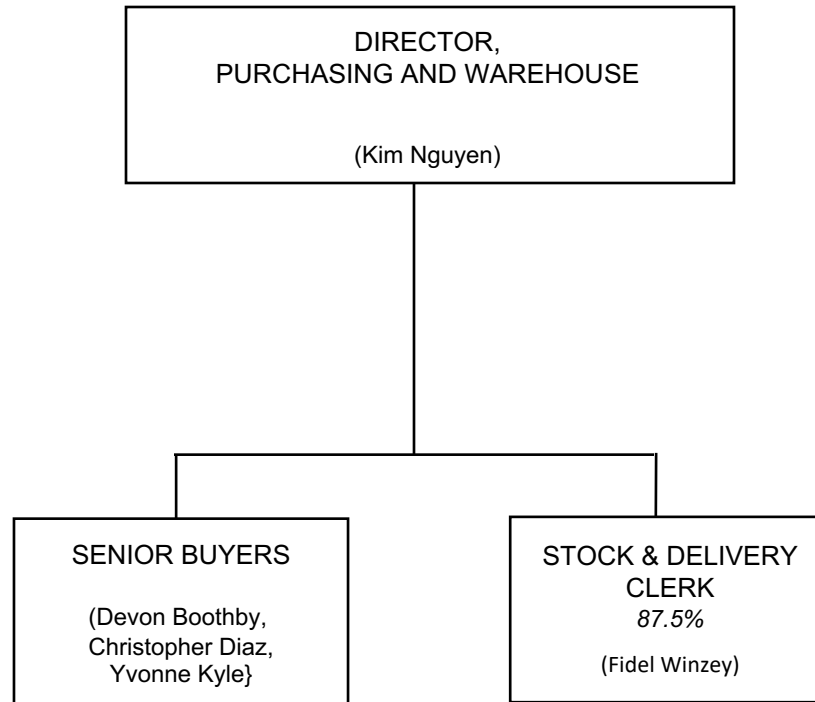
## FISCAL AND BUSINESS SERVICES



# FOOD AND NUTRITION SERVICES

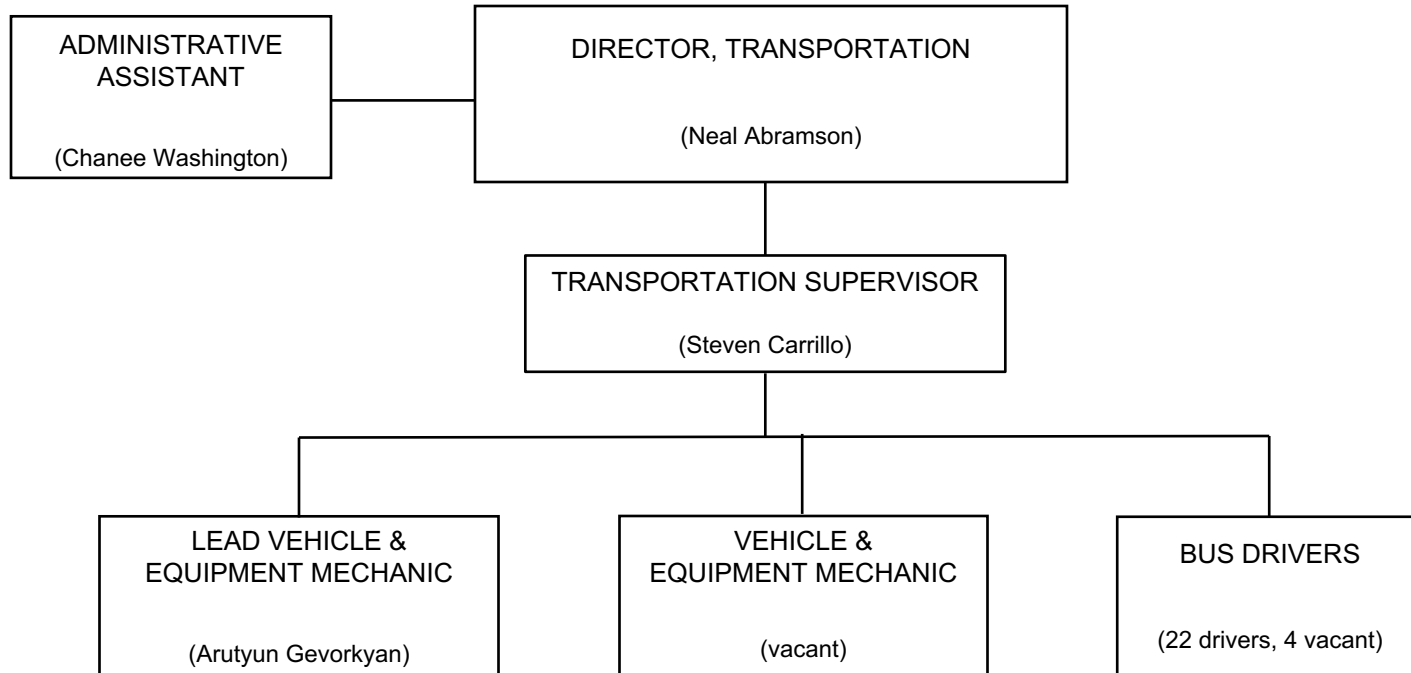


## PURCHASING AND WAREHOUSE

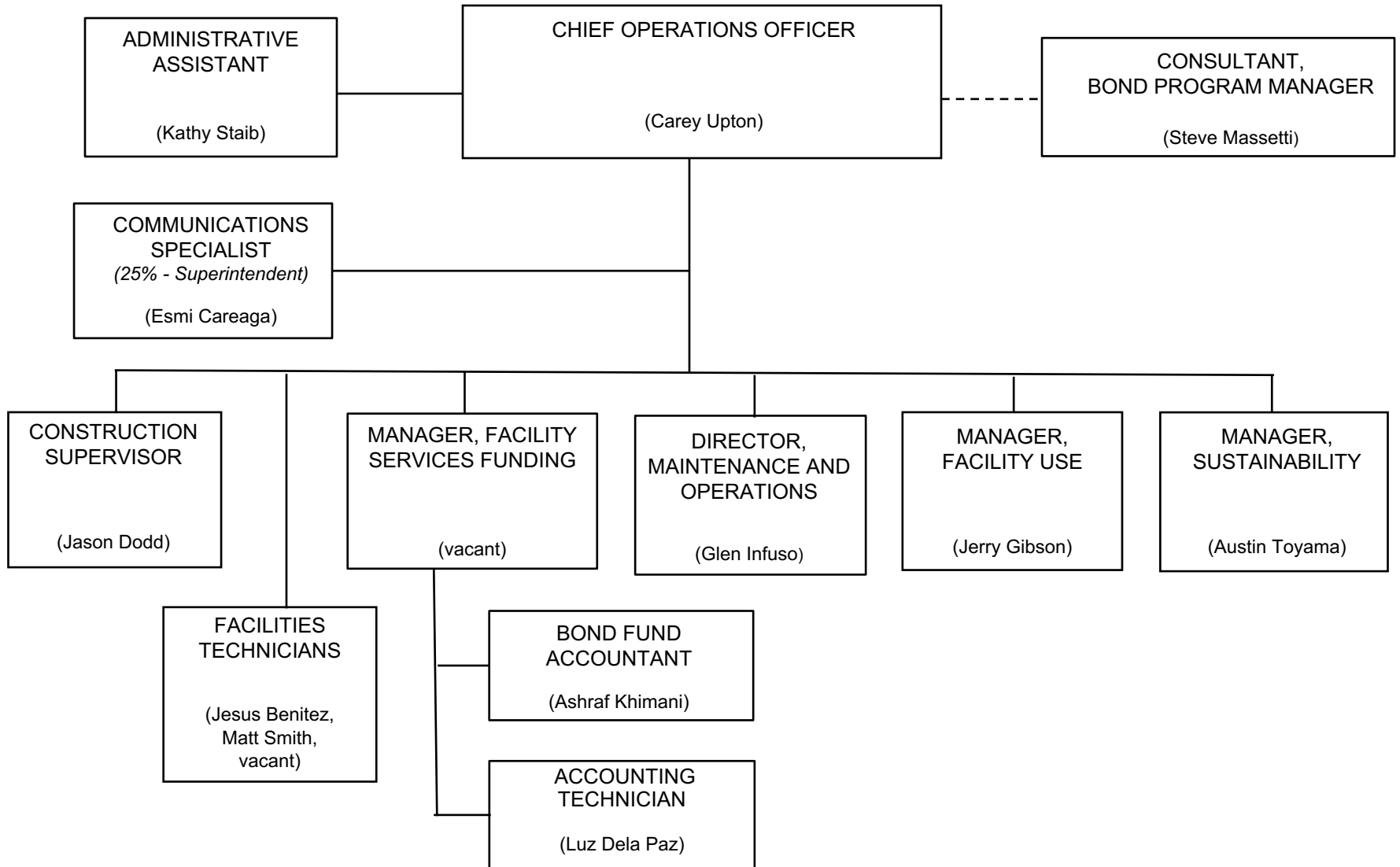




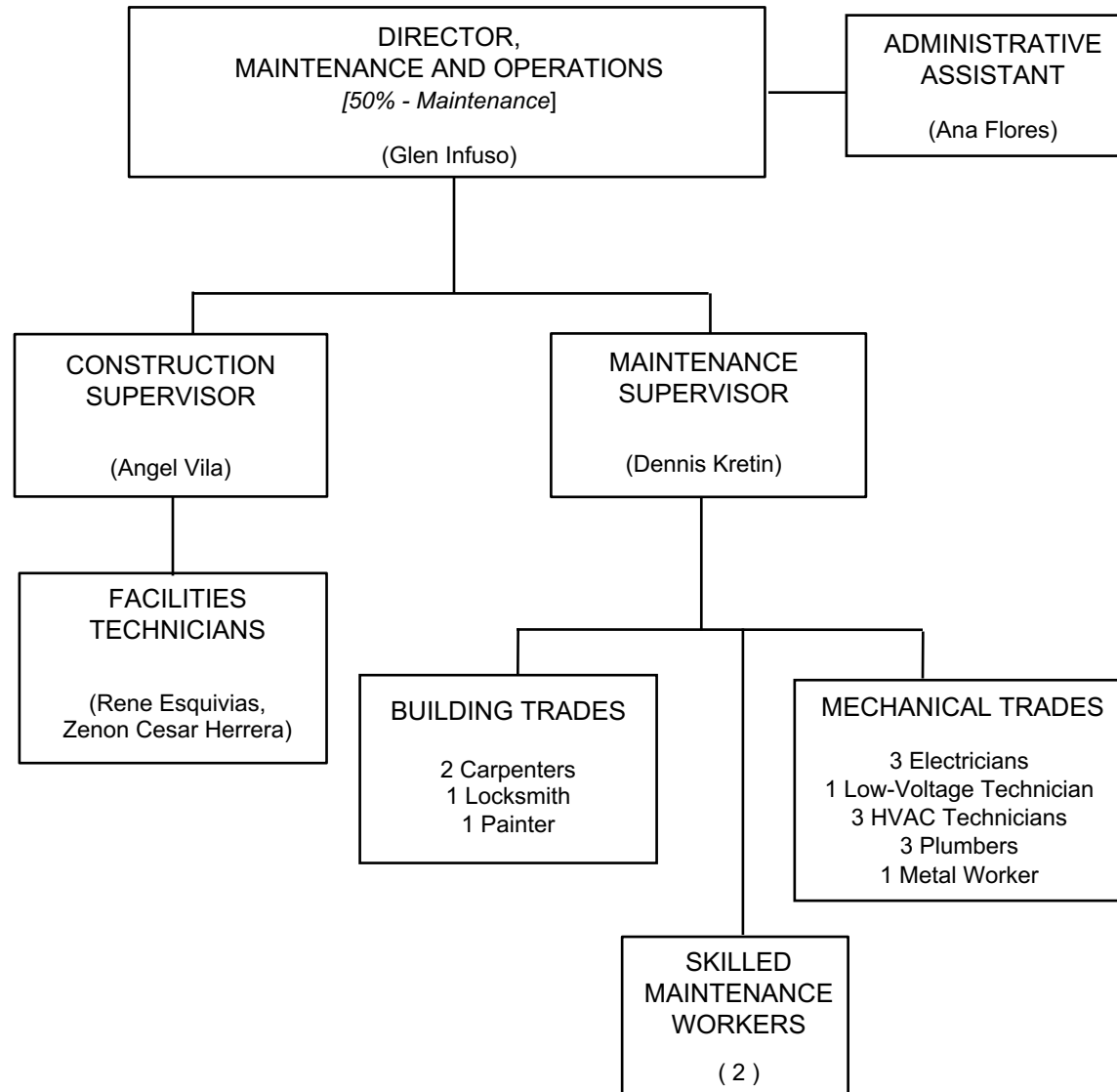
# TRANSPORTATION



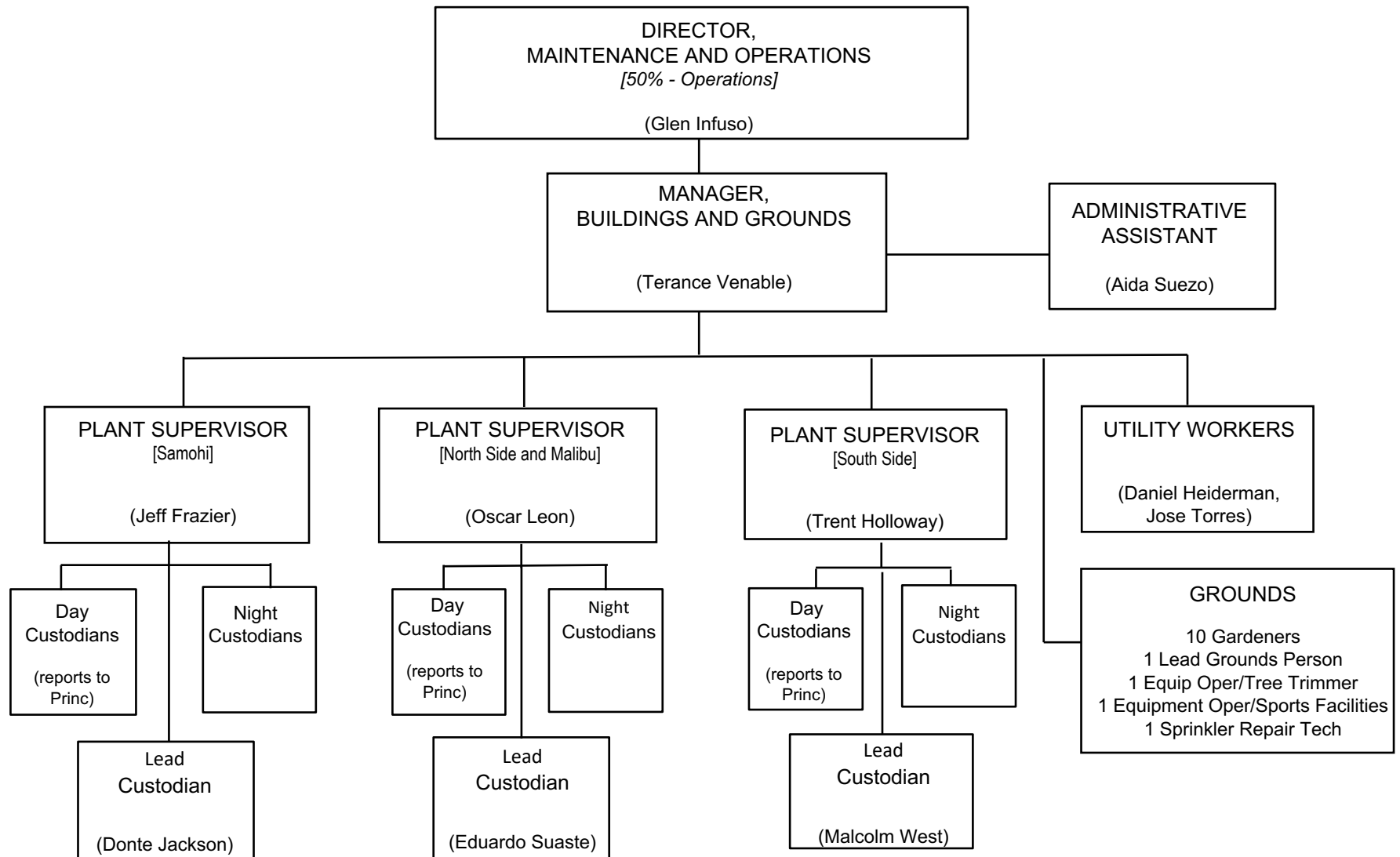
# FACILITY SERVICES DIVISION



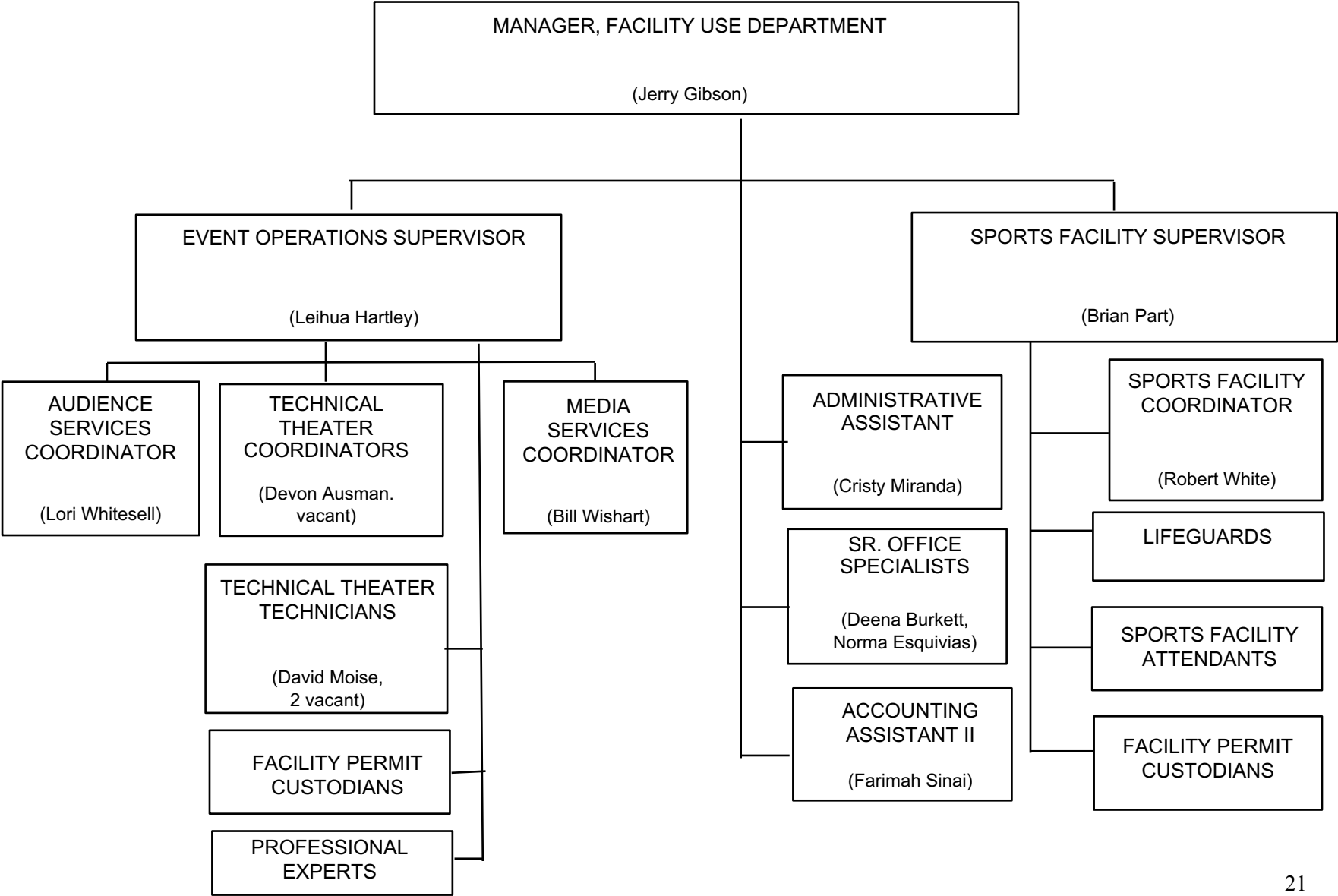
# MAINTENANCE AND CONSTRUCTION



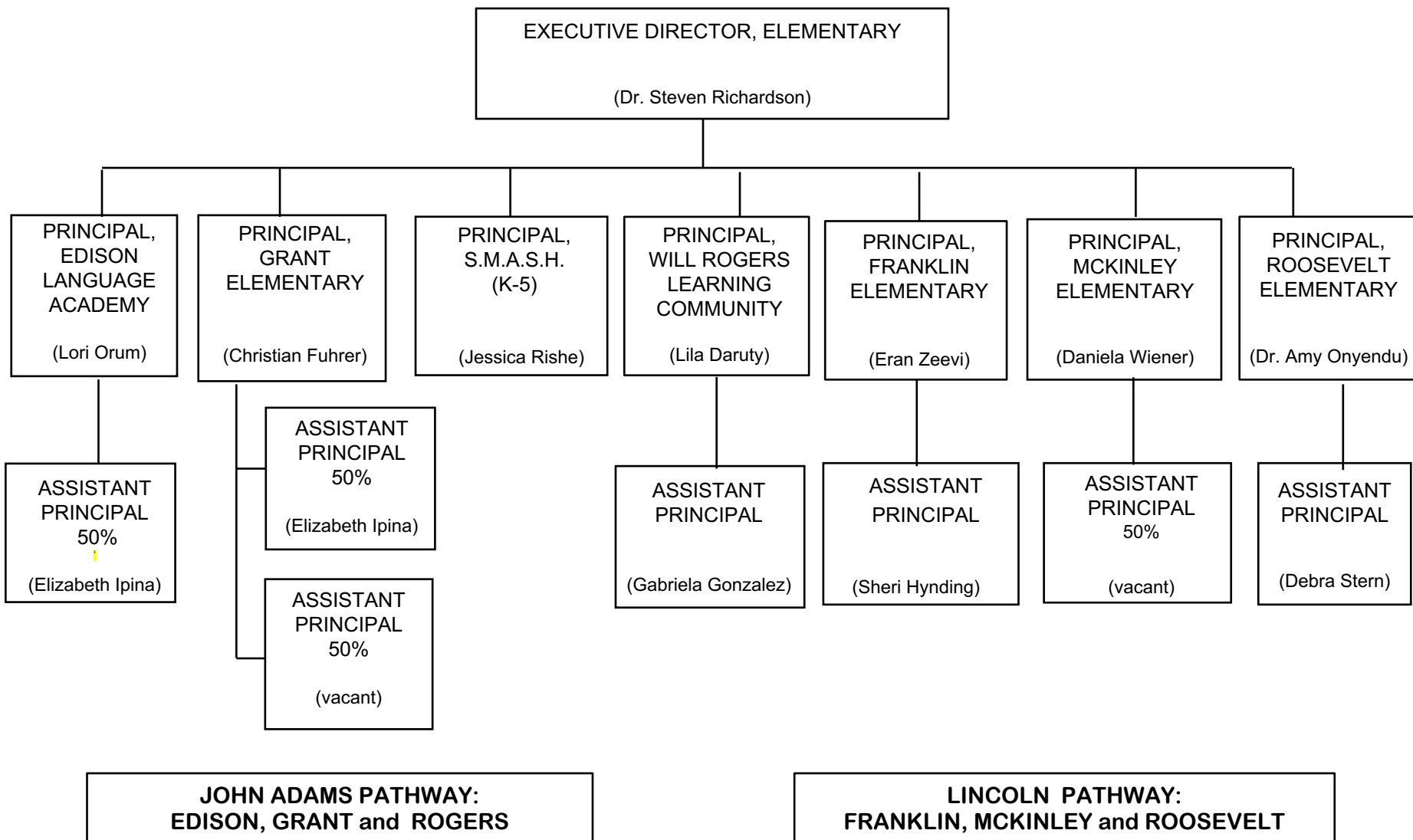
## OPERATIONS: BUILDINGS AND GROUNDS



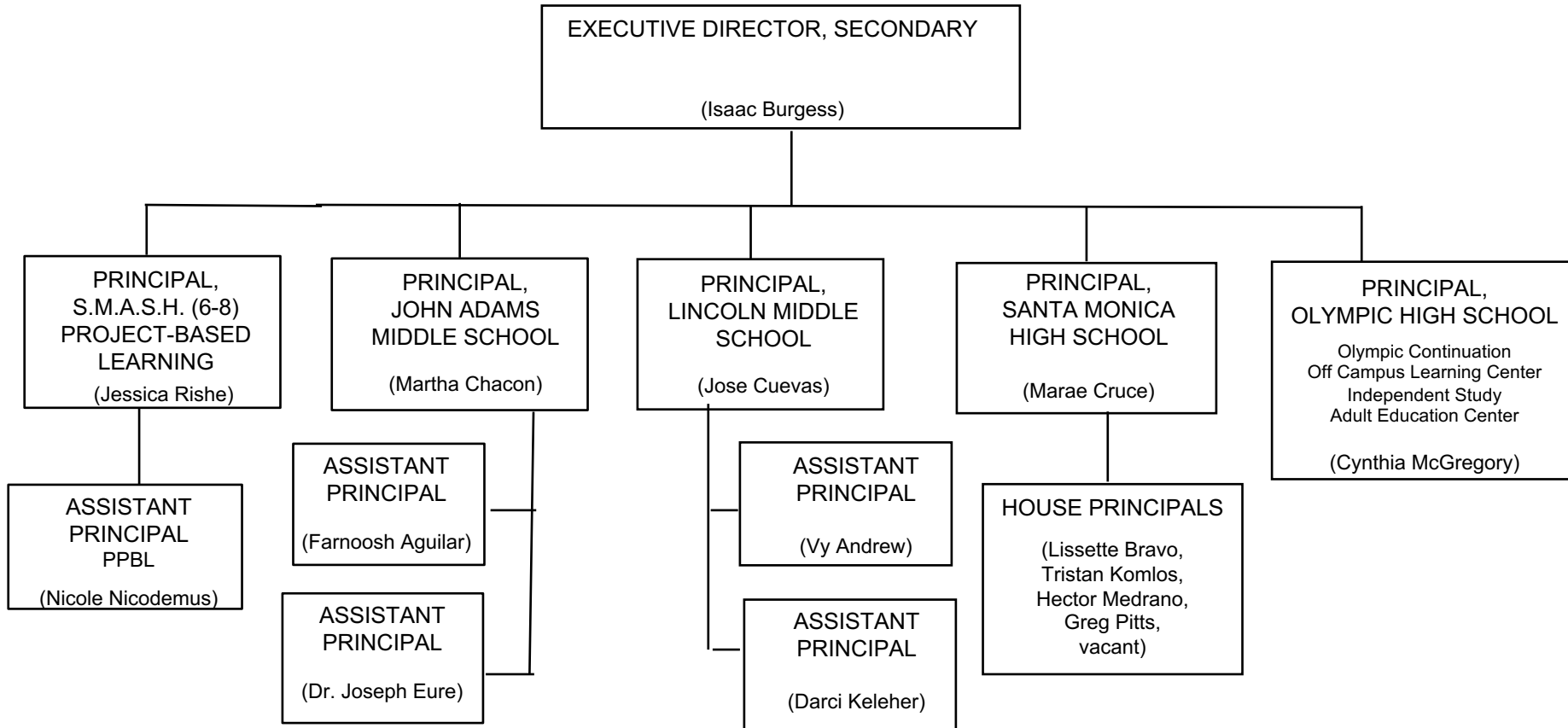
# FACILITY USE DEPARTMENT



# ELEMENTARY SCHOOLS



## SECONDARY SCHOOLS



## MALIBU PATHWAY

