

4.2 Concept A Build-out

Per the study scope, a High Impact reorganization of the campus was developed by the design team. The Concept A Build-out design addresses the goals and parameters of the Siting Study as follows:

Explore Linkages Between The Civic Auditorium Campus And Samohi – Michigan Avenue will extend between 4th and 7th Street to link Samohi and the community to the Civic Auditorium Campus. The campus Michigan Avenue Promenade will be secured during school hours to allow only student pedestrian circulation. In addition, the campus can be secured while allowing the Michigan Avenue Promenade to be open for public use when the school desires.

The Michigan Avenue Promenade will be a wide landscaped, animated path, varying from 60 to 80 feet. It incorporates seating, lighting, and shade structures, interspersed with gathering space nodes. A wide Michigan Commons or “campus green” will be provided at the new main entrance to campus along 7th Street and a new legible entrance facing the Civic Auditorium Campus will be provided along 4th Street.

Facilitate Community Access And Awareness Of Samohi Cultural And Recreational Facilities – The Michigan Avenue Promenade will allow greater public access to the new Semi-subterranean Gymnasium and Natatorium Complex located under the new Soccer Field, as well as to Barnum Hall, the Greek Theatre, the new Library, the new Semi-subterranean Parking Structure, and the cultural facilities on the Civic Auditorium Campus. Additionally opportunities exist for Samohi to use the Civic Auditorium Campus outdoor space located directly across 4th Street for campus events,

including festivals associated with performances at Barnum Hall and the Greek Theatre.

With the relocation of the existing Gymnasium and Natatorium the community will have a spectacular view of the Greek Theatre and the heart of the campus sited on the promontory re-establishing the intent of the original campus site plan design from the early 20th Century. Views to the campus will allow Samohi to reclaim its prominence as a cornerstone and key public institution in the community. A view corridor that aligns with the axis of the Greek Theatre will permit the campus to reclaim views to the Civic Auditorium Campus. Views to the neighborhood and ocean will allow Samohi to regain its ties to the community and natural resources.

Maximize Land Use – The reconfiguration of the campus will increase the density of the site, creating a new identity and legibility to the campus. The campus will be expanded internally to include a Football Field/Track Stadium, Semi-subterranean Parking Structure, Semi-subterranean Gymnasium and Natatorium Complex, and a Science and Technology Quadrangle between Michigan Avenue and Olympic Boulevard. Due to the grade differential across the campus, the Soccer Field can be stacked on top of a Semi-subterranean Gymnasium and Natatorium Complex and the Football Field/Track Stadium can be stacked on top of a Semi-subterranean Parking Structure, maximizing the land use of the site while maintaining the vertical scale of the original campus south of Michigan Avenue.

The original campus bounded on the northwest by Michigan Avenue will maintain the original campus English Building, History Building, Barnum Hall, and the Greek Theatre. The recently renovated Music

Building interconnected with Barnum Hall will also be maintained, as well. New structures within the original campus perimeter will be designed to complement the existing, retained structures in massing, scale, and character and to reinforce the axial relationship of the original campus design that aligns the English Building, History Building, and Greek Theatre. A roof deck over the Library that wraps around the southwest face of the History Building and the relocation of the current Gymnasium and Natatorium will enhance the original campus terracing from the History Building to 4th Street, while adding needed outdoor terrace space for student use.



Figure 44: Rendering, View from Civic Center to Campus

Create Plazas And Covered Outdoor Gathering Spaces – Plazas will be incorporated into the Michigan Avenue and 6th Street Promenades in addition to the gathering space nodes. The Michigan Avenue Promenade will connect to a plaza that fronts Barnum Hall which can serve as pre and post function space for the auditorium. The perpendicular 6th Street Promenade forms a plaza that aligns with the original campus axis to serve as a student body performance and event space. The campus Library and Art Gallery have been relocated southwest of the History Building bordering the 6th Street Promenade with direct Promenade access. The Library and Art Gallery will incorporate a roof deck that replaces the existing ramped slope to the west of the History Building. The roof deck will provide an elevated plaza that overlooks the 6th Street Promenade.

The configuration of the new Science and Technology Buildings that border Michigan Avenue, Olympic Boulevard, and the alley will create an academic courtyard to serve the house and science lab classrooms. The new quad will provide a separation between the campus and the rear of the businesses that front Lincoln Boulevard, as well as afford the auto shop direct access from the alley.

The Art Building is planned to include Digital Arts labs. It will have greater public access and replace the current Administration Building adjacent to Barnum Hall, the Greek Theatre, and the relocated Art Gallery. The demolition of the existing Art Building will allow for the creation of an additional academic courtyard between the English and the History Buildings.

Plazas and courtyards will incorporate seating, lighting, shade structures, and outdoor eating areas, with electrical and data outlets to support audiovisual

equipment, performance lighting, and food service equipment. Per meeting with the Director of District Food and Nutritional Services, satellite mobile food service carts will be located in outdoor gathering spaces throughout the campus in order for students to access food within the short lunch break. All storm water run-off from outdoor spaces will be directed to permeable landscaped areas and/or collected and reused for landscape irrigation.

Provide Identity, Access and Improved Circulation – The campus reconfiguration will reinforce 7th Street as the “formal” campus entrance or “Front Door.” The English Building will be renovated to respect the original components of the structure that have not been removed through renovation. Administration will be relocated from the center of campus to the English Building making it accessible to campus visitors. Short term parking will be provided adjacent to Administration for campus visitors.

Vehicular access will require further study by the District. In the Siting Study campus parking is planned to be accessed from Olympic Boulevard or the 5th Street spur, while parent drop-off/pick-up and bus drop-off/pick-up is separated and occur on Olympic Boulevard and the 6th Street extension access road. Pedestrian and bicycle access to campus is planned from 7th Street, Pico Boulevard, and 4th Street. Vehicle delivery access will be upgraded and separated from bicycle and pedestrian access on Pico Boulevard, as well as from the alley east of the campus. The separation of vehicular, bicycle, and pedestrian circulation is intended in order to re-organize campus access and lead to greater security, safety, and use. Campus directional signage will be added to each Samohi entry to improve wayfinding.

A means to secure each quadrant of the campus to allow public access to the Michigan Avenue and 6th Street Promenades after school hours is planned, as well as, a securable campus perimeter in the event of a campus lock-down.



Figure 45: Rendering, View along 6th Street Promenade Between New Library and New Cafeteria and Art Buildings



Figure 46: Rendering, View from Olympic Blvd. along 6th Street Access Road

Increase and Reorganize Parking – Parking will be centralized in one location under the Football Field/Track Stadium to assist campus security in controlling site access. Direct access to a public street is planned to eliminate vehicular circulation on campus. (Alternately parking will be included under the Baseball field, or under both fields) Parking will be located in close proximity to cultural and athletic facilities for ease of campus and public access.

Due to the change in elevation across the site, the parking structure can be semi-subterranean with the entrance/exit day-lighting at grade to the northwest reducing the visual impact of parking on campus. Per meetings with the City of Santa Monica Transportation Planning Manager, the parking structure entrance/exit could be located either on Olympic Boulevard or the 5th Street spur from Olympic Boulevard. The semi-subterranean design will afford the parking structure natural light and ventilation and should reduce construction and operating costs. Per meetings with the District, natural light and a single level design will assist with security of the parking structure.

Increase and Upgrade Athletic Facilities – All fields and exterior courts identified in the program, including a new synthetic turf soccer field, will be located on campus. The District's preference is to locate athletic facilities on-site for security, safety, scheduling, and participation. Relocation of fields and exterior courts will allow the Michigan Avenue Promenade to extend through campus and promote visibility and access of the facilities from the campus perimeter and the Michigan Avenue Promenade. It is important to note that the need to relocate athletic facilities off-site between phases is greater in the Concept A Build-out than the Concept B Build-out. Fields and exterior courts will be secured to allow for scheduling of facilities and controlled access on

synthetic turf fields. The campus reconfiguration will provide for the replacement and expansion of campus athletic facilities.

- The (8) lane CIF Track, synthetic turf Football Field, and 2,500 seat Stadium will be provided with locker rooms, concessions, restrooms, and storage below grandstand seating. These facilities will also serve the synthetic turf Softball Field and exterior Basketball and Tennis Courts.
- The Semi-subterranean Gymnasiums and Natatorium Complex will provide locker rooms, concessions, restrooms, and storage for the synthetic turf Soccer Field above.
- The Tennis Courts will be reconfigured to allow a separate "center" court for competitions and a secured perimeter with access to stadium concessions, restrooms, and utilities for "Grad Nite" activities.
- The synthetic turf Baseball Field will be located proximate to the Greek Theatre's new accessory building for shared use of concessions and restrooms, as well as use a separate field storage room.
- The elevation of the Baseball Field, Softball Field, and Basketball Courts will be lowered to diminish the visual and physical barrier of the retaining wall along 4th Street.

The 6th Street Access Road will be shifted northeast to accommodate the Football Field/Track Stadium. The Gymnasiums and Natatorium will be relocated to the north quadrant of campus along the new 6th Street Access Road. They will day light to the west, and be largely subterranean to the east, taking full advantage of the significant terrain change on campus. The site design will mitigate the grade change between adjacent campus buildings and increase campus and public access to facilities. The

6th Street Access Road will include a turning circle that abuts the Michigan Avenue Promenade to allow drop-off/pick-up for athletic and cultural events, with a rolled curb for delivery and emergency vehicle access. The electrical vault will be relocated to accommodate the new 6th Street Access Road and Gymnasiums and Natatorium Complex. Per meeting with the electric company, they would prefer that the vault be relocated proximate to the existing electrical service along the Michigan Avenue Promenade. If acceptable to the electric company, the vault could potentially be relocated to the Semi-subterranean Parking Structure. Relocation will include electrical service for the expanded campus facility needs.

The on grade entrances to the Semi-subterranean Gymnasiums and Natatorium Complex will be at mid-bleacher level, stepping down to the court or pool. The perimeter of the complex will be glazed to allow natural light to filter into the complex. In addition the eastern border of the Gymnasiums and Natatorium Complex will have a series of "bleacher" scaled steps to afford lounging along the western edge of the new Science and Technology Quad.

Enhances Academic Facilities and Infrastructure – All new site and building construction on the campus will integrate sustainable design principles that meet the District's standards to maximize performance, including buildings that are sited to:

- Permit the cool prevailing winds from the ocean to flow through campus and condition indoor and outdoor spaces.
- Take full advantage of day lighting, yet protect from excessive heat gain and glare by locating, orienting, and shading exterior glazing appropriately.
- Incorporate renewable energy resources.

The campus build-out will enhance the remaining existing buildings and replace other buildings with state-of-the-art facilities, including classrooms organized in 5 to 6 separate buildings each grouping with its own commons, satellite food service, and outdoor gathering space. The concept will include the addition of facilities to enhance the campus.

- A Greek Theatre accessory building adjacent to the stage that will provide changing rooms, concessions, restrooms, and storage. A new stage and open frame proscenium with retractable stage backdrop will allow open views to the theatre from the community and views to the community from the theatre when appropriate (Theatre acoustics, lighting and audio will be addressed in the design phases).
- The Business Building Replacement will include a Student Union and Staff Center. The Student Union Café will be located on the Barnum Hall plaza and the Staff Center will be located proximate to the Administration office in the English Building.
- The Cafeteria Building Replacement, which will continue to serve as the centralized facility for the entire District, will be expanded on its current site to include a semi-subterranean level for additional food service functions.
- The Language Building Replacement will be expanded on its current site and the Pre-School Center site to include a new Pre-school and outdoor play space with access separated from the high school.
- Expansion of academic facilities within the replacement projects and redistribution of classrooms to coordinate with academic community reconfiguration will be determined with the District.

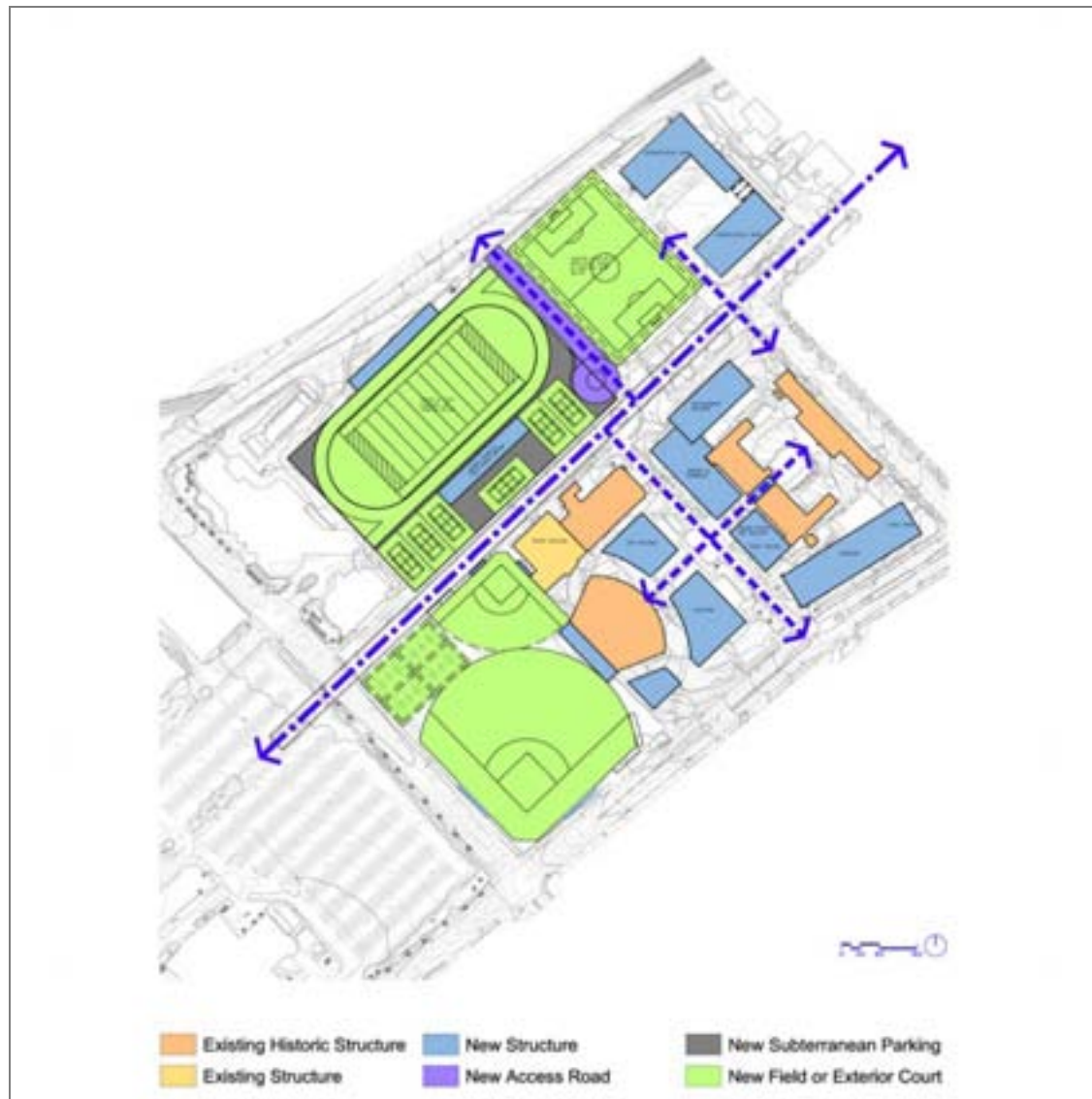


Figure 47: Drawing, Concept A Build-out, Site Plan



Figure 48: Rendering, Concept A Build-out, Aerial View from North



Figure 49: Rendering, Concept A Build-out, Aerial View from West

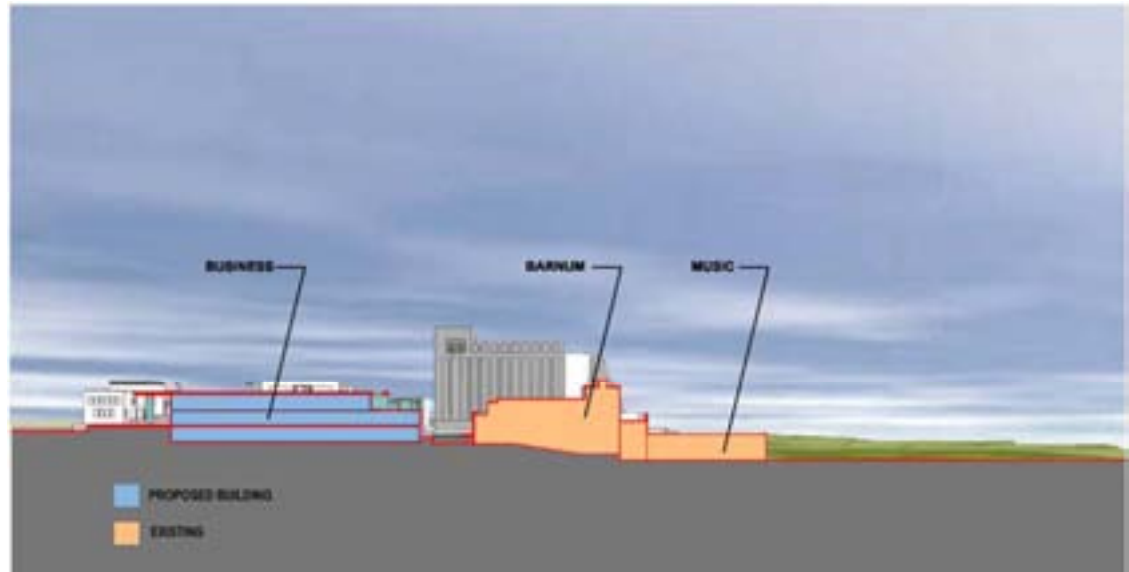


Figure 50: Drawing, Site Section

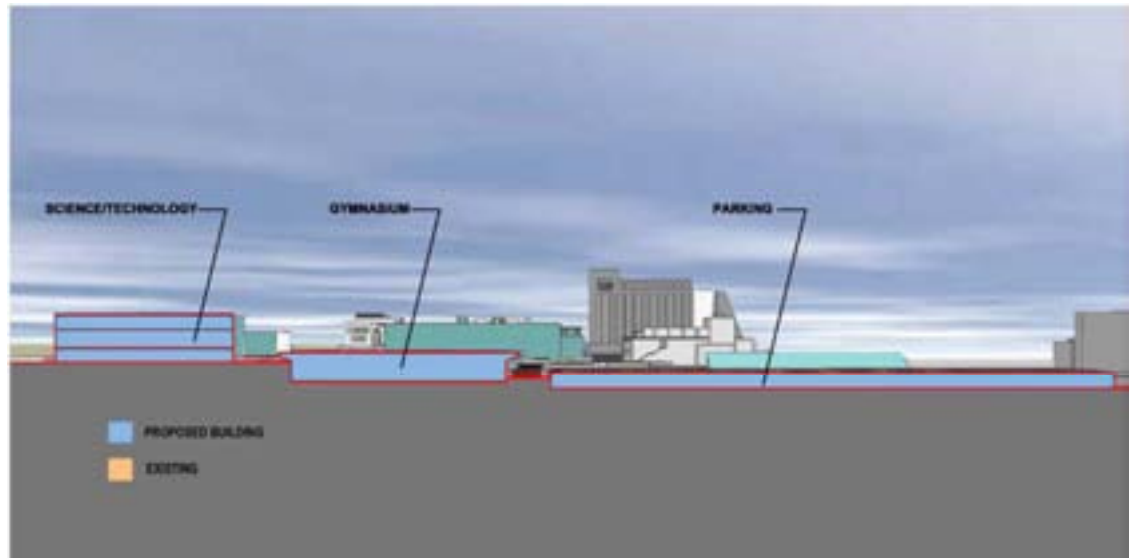


Figure 51: Drawing, Site Section

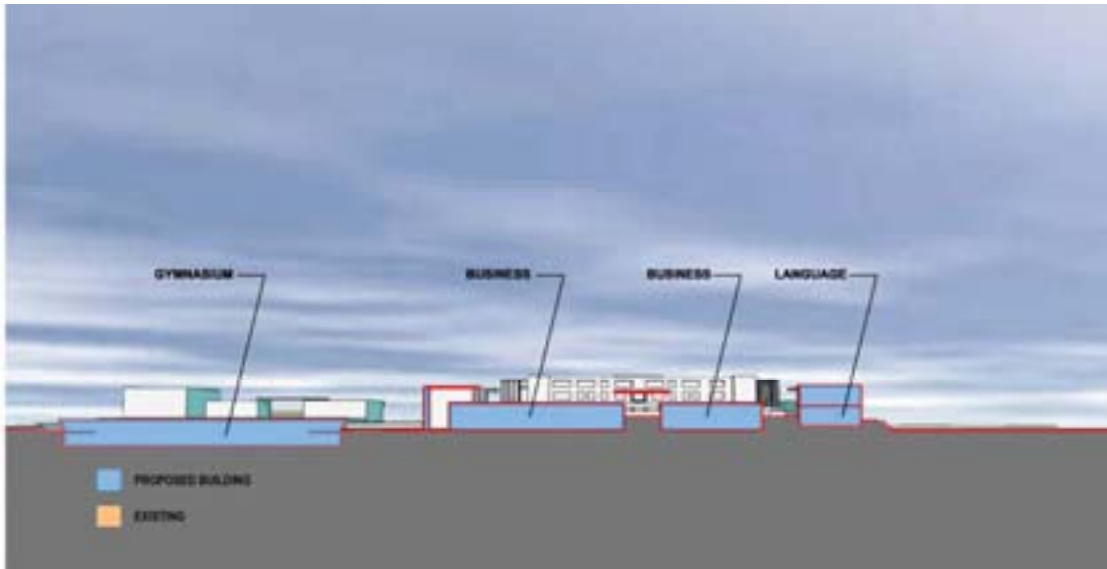


Figure 52: Drawing, Site Section

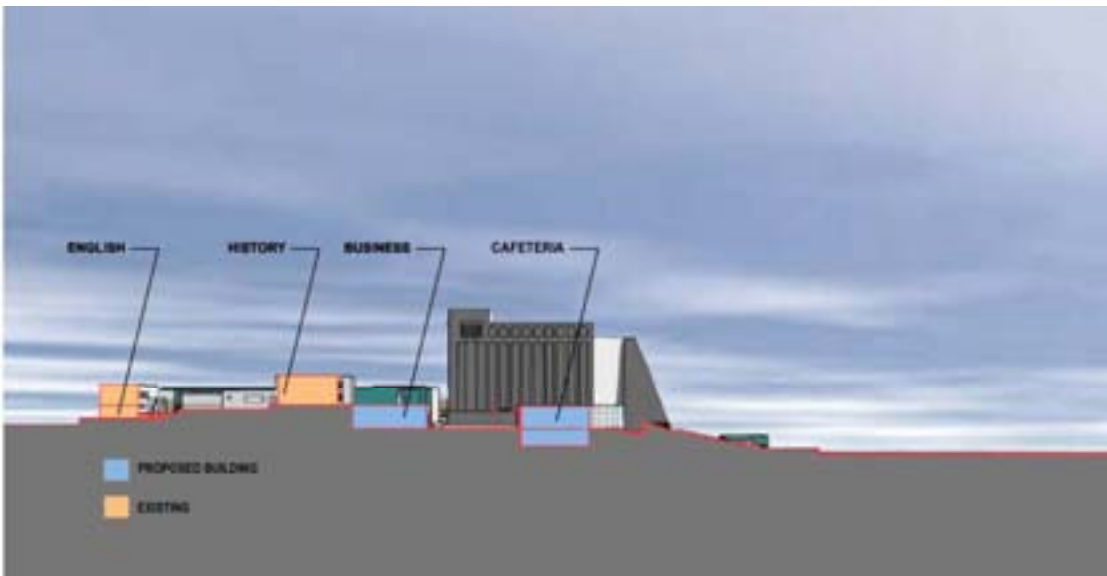


Figure 53: Drawing, Site Section



Landscape Design

The landscape design for the site is hierarchical; two major Malls intersect the campus, with smaller, more program-specific courtyards and gardens integrated throughout the campus.

Michigan Avenue now extends a central green spine from the school's formal entry at 7th Street all the way to 4th Street and Santa Monica's Civic Center. Segregated pedestrian and bicycle circulation and a sequence of varied, yet cohesive, gathering spaces occur along this spine, for both programmed and spontaneous activities. Lush canopies of flowering shade trees alternate with open plazas and palms to guide students and visitors alike to various destinations within the campus.

A secondary axis runs north-south and is anchored by Barnum plaza on the north and Pico Boulevard's entry plaza on the south. Nestled in between Barnum Hall and the Pico Boulevard entry is the plaza that aligns with the original campus axis, a tree-lined outdoor room ideal for student gatherings, lunches, planned events and circulation. Tall palms punctuate this axis, reinforcing the sequence of rooms and creating skyline visibility; canopy trees create a sense of enclosure and define the open space.

The enhanced original campus axis links the student body plaza to the Greek Theatre as well as to the new courtyard between the English and History Buildings. The Greek Theatre, as a place of celebration and gatherings, is enhanced with adjacent plantings such as jacaranda trees that flower in May, creating a dramatic backdrop for June graduation.

Additional courtyards and gardens related to the program of adjacent buildings are designed to provide open space for study, learning opportunities, socializing and dining. Science and Technology buildings flank the Science/Technology Courtyard, designed as a grassy gathering space shaded by California native trees. A quiet, shady patio sits adjacent to the new Library, available for individual reading or study groups. A grove of conifers and meandering paths provides a more contemplative and circuitous route through the campus southeast of the Greek Theater.



Figure 54: Concept A Build-out, Landscape Plan



Figure 55: Rendering, Campus Entry from Michigan Avenue looking southwest



Figure 56: Rendering, Library Courtyard



Figure 57: Rendering, 6th Street Promenade Looking Towards Olympic Blvd.



Figure 58: Rendering, Michigan Avenue Promenade looking towards 4th Street